

# LexisNexis® TotalPatent®

Search the largest online collection of enhanced first-level patent data

*When it comes to innovation and protection of intellectual property, you need a resource that provides you with the most comprehensive, precise and dynamic patent research and retrieval service available anywhere.*

LexisNexis® TotalPatent® offers the most patent content available from a single source and the tools you need to search, compare and analyze results. With 100 patent authorities—32 in full text—you can be confident you're covering all the bases. You get detailed coverage for full text, bibliographic, abstracts, searchable English machine translations, PDFs and images. And we update our online information daily.

TotalPatent gives you the comprehensive patent data you need to help address challenges such as:

- Protecting your patent portfolio
- Researching licensing opportunities
- Checking assignee and patent status
- Tracking competitor developments
- Watching innovation space
- Monitoring emerging markets
- Performing citation analysis on up to 20 documents at a time

Whatever your challenge, the TotalPatent service can help you get to the relevant information you need.

## Multiple search options

- Guided search
- Advanced search
- Semantic search
- Notes search
- Publication number search
- Look up assignee or inventor
- National and international classification searching
- Search in English or original language of publication, including Asian authorities

## Analytics and reporting tools

- Patent family reports
- Graphs and charts
- Results sets comparison tool
- Citation maps

## Links and integration

- Chisum on Patents
- CourtLink® record of cases being litigated
- Elsevier Scopus® Abstracts for non-patent prior art
- PatentOptimizer™
- REEDFAX®

## Download and export options

- Unlimited downloads
- Export to BizInt Smart Charts
- Export to Microsoft® Excel® spreadsheets
- Export up to 20,000 records into a spreadsheet
- Export to Adobe® Acrobat®
- Export in extensible mark-up language (XML ST.36) and a variety of other formats

## On-demand access to helpful resources

Link to training and tutorials from screens throughout LexisNexis TotalPatent. These resources include videos, quick references and tutorials. Videos will play from an embedded video player on our intellectual property training site and other resources will open in Acrobat® Reader®.

---

*“TotalPatent allows my students to research and analyze patent data by accessing a large collection of searchable full-text and bibliographic patent databases.”*

—Dr. Tu, Law Professor, West Virginia University College of Law

---

## Search options

Multiple search options for the novice to the expert researcher.

Specify the segments to search.

For a semantic search, enter terms or cut and paste up to 32,000 characters.

Additional options help you fine-tune your search.

One hundred patent authorities with 32 in full text.

The Publication Number search tool enables users to easily import up to 500 numbers in a flexible format, display them as a results set, and quickly retrieve the documents as compressed and searchable PDF copies.

The screenshot displays the TotalPatent search interface. At the top, there are navigation tabs: Search, Document Retrieval, History & Alerts, Analytics, and Work Folders. Below these are sub-tabs: Guided Search, Advanced Search, Semantic Search, and Notes Search. The main search area includes a 'Search Terms' field, a 'Search Within' dropdown set to 'Full Text (incl. Biblio.)', and a 'Search' button. Below the search terms field, there are 'Search Options' with checkboxes for 'Display hit count only', 'Also search for terms in English machine translations', and 'Remove family member duplicates'. There is also a 'Publication Date' dropdown set to 'Previous year' and a date range 'Sep 04 2012 to Sep 04 2013'. The 'Restrictions' section has two 'Select Field' dropdowns and input fields. The 'Authorities' section is divided into 'Major Full Text' (with checkboxes for US, EP, WO, CN, JP, KR, DE, FR, GB, CA) and 'Other Full Text' (with checkboxes for AT, AU, BE, BR, CH, DD, DK, EA, ES, FI, IE, IN, IT, LU, MC, MX, NL, PT, RU, SE, SU, TW). There are also checkboxes for 'Bibliographic and Abstract' and 'Document Kinds'. At the bottom, there is a 'Save This Search' section with a 'Folder Name' dropdown and a 'Saved Search Name (Optional)' field. On the right side, there is a 'Publication Number Search' panel with an 'Enter a List' field, an 'Upload a List' button, and a 'Search' button. Below this is a 'Look Up Assignee or Inventor' section with radio buttons for 'Assignee' and 'Inventor', and a 'Find' button. Further down is a 'Find Subsidiary Companies' section with a 'Find' button. At the bottom right, there is a 'How Do I...?' section with a list of help topics: 'Find coverage information (publication types, dates, etc.) for each authority?', 'Find the most recent document available for a given country?', 'Develop a terms & connectors search?', and 'Format application, priority, and publication numbers in my search request?'.

Look up the assignee and inventor names in millions of records.

Ensure your patent research is as comprehensive as possible by including subsidiaries in your search.

Search by national and international classification, including the new CPC system.


Context-sensitive help is available throughout TotalPatent.

*"We were attracted to TotalPatent because we saw that its functionality and comprehensiveness could serve as one-stop shopping for all of our patent research needs."*

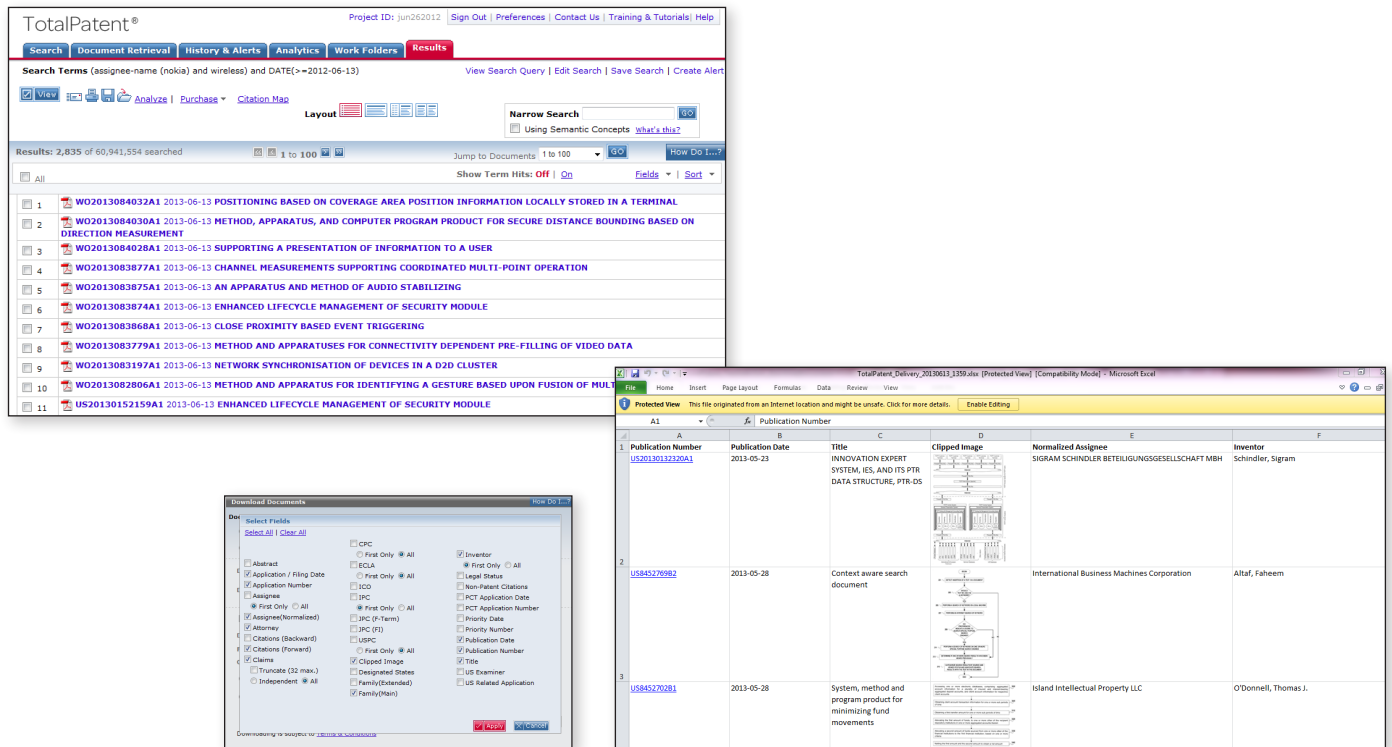
—Linda Boss, Manager of Library Services, Lang Michener LLP

## Take advantage of enhanced spreadsheet delivery options




You can:

- From your results list, select specific fields to export to a spreadsheet directly—just click the  icon
- Include clipped images in your spreadsheet when you choose XLSX format
- Download as many as 3,000 documents from your results list at one time
- Download up to 5,000 documents in XLSX format—or up to 20,000 in CSV format—at one time from a Work Folder

Also, whichever spreadsheet format (CSV, TSV or XLSX) you chose the last time will be the default you see the next time.



The image shows the TotalPatent interface with search results and a spreadsheet export dialog. The search results list includes patent entries such as WO2013084032A1 and US20130152159A1. The spreadsheet export dialog allows users to select fields for export, including Publication Number, Title, and Clipped Image.

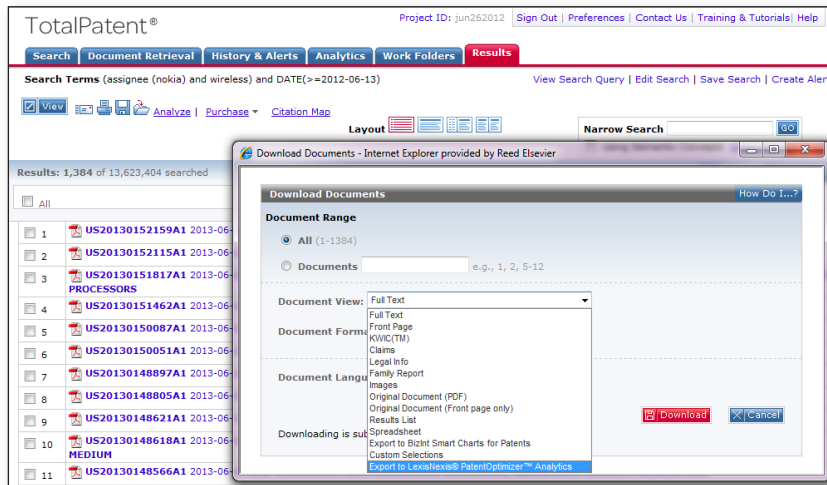
Publication Number	Publication Date	Title	Clipped Image	Normalized Assignee	Inventor
US20130133220A1	2013-05-23	INNOVATION EXPERT SYSTEM, IES, AND ITS PTK DATA STRUCTURE, PTK-DS		SIGRAM SCHINDLER BETEILIGUNGSGESELLSCHAFT MBH	Schindler, Sigran
US8452709B2	2013-05-28	Context aware search document		International Business Machines Corporation	Altaf, Faheem
US8452702B1	2013-05-28	System, method and program product for minimizing fund movements		Island Intellectual Property LLC	O'Donnell, Thomas J.

*“The international scope of TotalPatent is turning out to be extremely valuable for us as our team of IP professionals has added confidence that their searches of patent records worldwide will be both comprehensive and accurate. This is crucial for us when it comes to meeting the key criteria required by the USPTO when filing for the accelerated examination of patent applications.”*

—Nicholas Witchey, Ph.D., A USPTO-registered patent agent, Fish & Associates

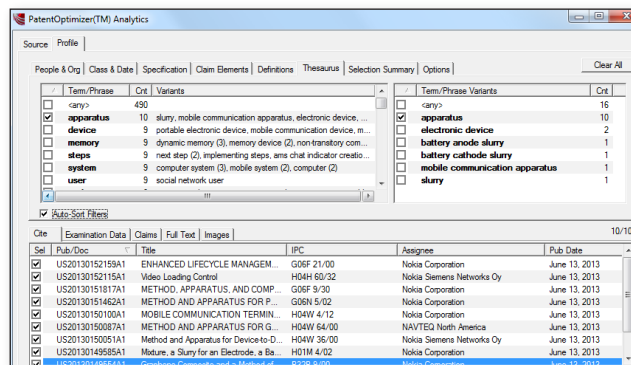
## Download your results directly to LexisNexis® PatentOptimizer™

Now you get easy, direct exporting of your TotalPatent search results or Work Folders to LexisNexis® PatentOptimizer™.



In the **Download Documents** window, you'll see a new **Document View** option. And **PatentOptimizer™ Analytics** launches automatically.

The **PatentOptimizer Analytics** window will appear. Make your selections and click the **Run Analytics Profile** button. Here's an example of what you'll see:



*"We selected TotalPatent because of two crucial factors. First, the results from the TotalPatent service gave us confidence that we were uncovering all relevant records in our research for clients. Second, the functionality of the product is very robust and easy for all of us in the firm to use."*

–Véronique Pagé, A patent technological advisor at Benoît & Côté

# Compare and analyze your results with LexisNexis TotalPatent

You've done your patent research on TotalPatent and you have the answer sets to analyze, but you need to understand where they overlap and how they differ. Now, it's a simple three-step process to get to that information.

**Step one**  
Run your search and save your results to the Analytics tab.

**TotalPatent™** Powered by PureDiscovery

Preview Semantic Terms and Results

1. Your Search Terms  
fingerprint resistance on glass or metal surfaces

Terms Generated by Semantic Analysis  
19 of 20 terms used

**REQUIRED (Boolean "AND")**  
fingerprint resistance coating

**OPTIONAL (Boolean "OR")**  
resistivity of the material  
metal surfaces resistance on state  
low resistance on state  
coated surface surface coating  
high resistance off state  
low resistance state resistance state  
chalcogenide glass material resistance material  
surface resistance chalcogenide conducting filament  
metallization cell germanium selenide  
intrinsic resistivity

**EXCLUDED (Boolean "NOT")**

Most relevant 20 of 184 results:

- JP2007314609A 2007-12-06 FINGERPRINT-RESISTANT COATING  
English Abstract: PROBLEM TO BE SOLVED: To provide a fingerprint-resistant coating capable of forming a coating film that does not show a fingerprint left thereon. SOLUTION: The coating comprises a resin having a compositional ratio of an oxygen atom to a carbon atom in the main skeleton of at least ...
- JP2011099744A 2011-05-19 FINGERPRINT-PROOF EVALUATION METHOD AND FINGERPRINT-PROOF FILM  
English Abstract: PROBLEM TO BE SOLVED: To provide a fingerprint-proof evaluation method with high objectivity and high reproducibility, for measurement by a general-purpose method. SOLUTION: The fingerprint-proof evaluation method of a film includes: an in-situ glossness measuring process for measuring ...
- JP201005707A 2010-04-30 FINGERPRINT-PROOF PHOTOCURABLE COMPOSITION AND COATING WITH FINGERPRINT-PROOF COATING LAYER  
English Abstract: PROBLEM TO BE SOLVED: To provide a fingerprint-proof photocurable composition improving fingerprint-proof property of an optical display device surface or a product with mirror finish by a very simple process such as coating. SOLUTION: The fingerprint-proof photocurable composition ...
- JP2011195806A 2011-10-06 FINGERPRINT-RESISTANT COATING FILM-FORMED ARTICLE AND FINGERPRINT-RESISTANT COATING MATERIAL COMPOSITION  
English Abstract: PROBLEM TO BE SOLVED: To provide a fingerprint-resistant coating film-formed article including a coating film on which fingerprint stains are hardly made conspicuous and which has practically-sufficient mechanical strength and to provide a fingerprint-resistant coating material composition ...

**TotalPatent™** Project ID: Client ABC1234

Search Document Retrieval History & Alerts **Analytics** Work Folders Results

Visualize Compare

Compare Results, Folders, and Lists

Select up to 3 items from search results, folders or document retrieval results that you have saved to Analytics.

Name	Saved from	Time
<input checked="" type="checkbox"/> REQUIRED: ("fingerprint"[H] *resistance coati...	Recent Search	2012-03-27
<input checked="" type="checkbox"/> REQUIRED: ("constituent of the coating"[H] *f...	Recent Search	2012-03-27
<input checked="" type="checkbox"/> ((fingerprint /3 resist) and (glass or metal...	Recent Search	2012-03-27
<input type="checkbox"/> ((poly-crystalline or polycrystalline) /3 (sc...	Results Page	2012-03-20
<input type="checkbox"/> (semi-conductor or semiconductor) and DATE(>=...	Results Page	2012-03-20
<input type="checkbox"/> REQUIRED: ("poly-crystalline semiconductor"[H]...	Results Page	2012-03-20
<input type="checkbox"/> (poly-crystal or non-single crystal one) a...	Results Page	2012-03-20

You've selected:

- REQUIRED: ("fingerprint"[H] \*resistance coati...
- REQUIRED: ("constituent of the coating"[H] \*f...
- ((fingerprint /3 resist) and (glass or metal...

Compare Selected

**Step two**  
In Analytics, select the result sets you want to analyze (up to three sets).

**TotalPatent™** Project ID: Client ABC1234

Search Document Retrieval History & Alerts **Analytics** Work Folders Results

Visualize Compare

Compare Results, Folders, and Lists

2. SHOW STATISTICS

Venn Chart

148 documents only in REQUIRED: ("fingerprint"[H] \*resistance coati...

35 documents in both REQUIRED: ("fingerprint"[H] \*resistance coat... and ((fingerprint /3 resist) and (glass or metal...

1 documents in both REQUIRED: ("fingerprint"[H] \*resistance coat... and REQUIRED: ("constituent of the coating"[H] \*f...

4 documents only in REQUIRED: ("constituent of the coating"[H] \*f...

184 documents in REQUIRED: ("fingerprint"[H] \*resistance coat...

511 documents in ((fingerprint /3 resist) and (glass or metal...

3 documents in REQUIRED: ("constituent of the coating"[H] \*f...

808 total documents with exact duplicates removed

35 documents common to 2 sets | Visualize this set

Layout 1 to 35 of 35 Jump to Documents 1 to 35

1 WD2010070729A1 2010-06-24 SURFACE TREATING AGENT FOR METALLIC MATERIALS, METHOD FOR SURFACE TREATING METALLIC MATERIALS USING THE SURFACE TREATING AGENT, AND SURFACE TREATED METALLIC MATERIALS

2 JP2007002330A 2007-01-11 SURFACE TREATMENT AGENT FOR ZINC OR ZINC ALLOY GALVANIZED STEEL SHEET, AND SURFACE TREATED ZINC OR ZINC ALLOY GALVANIZED STEEL SHEET

**Step three**  
Visualize, compare and contrast the different result sets by clicking on the interactive elements of the diagram.

## TotalPatent features at a glance

Feature	Description	How it helps you
100 patent authorities—32 in full text	More content than any other single provider.	A single search across multiple authorities saves you time. And because the claim(s) are uniquely available in the full text of the document, you'll be accessing the most important part of the patent(s).
Over 60 million PDFs	PDFs are multi-page, compressed, bookmarked, and often searchable.	Speed of downloading PDFs is greatly enhanced. Storage costs are reduced. Search and highlight terms within the PDF, then copy and paste text from the PDF to other applications.
Search in original language or English	You can choose to search in the language in which the patent was originally published as well as in machine-translated English.	Because a document is not published in English does not diminish its importance, neither is it any defense. The ability to search in English decreases the risk of missing important prior art or infringing other parties' intellectual property.
Semantic Search powered by PureDiscovery®	The only truly transparent, user-controlled semantic search technology specifically "trained" to recognize patent concepts.	The user is in complete control of the semantic analysis, interacting with the technology to refine the concepts.
Unlimited alerts	You can create two types of alerts: <ul style="list-style-type: none"> <li>• By keyword, which retrieves all publications that include your keyword and reflect any kind of change</li> <li>• By publication number, which retrieves ONLY that specific patent document if it reflects any kind of change</li> </ul>	TotalPatent alerts help you: <ul style="list-style-type: none"> <li>• Monitor competitors</li> <li>• Keep up with changes in technology</li> <li>• Monitor changes to individual and multiple documents</li> </ul> And you can forward your TotalPatent alerts to other TotalPatent users!
Side-by-side results views	Choose from: <ul style="list-style-type: none"> <li>• Full</li> <li>• Family</li> <li>• Claims</li> <li>• Legal</li> <li>• Image</li> <li>• CourtLink</li> <li>• PDF</li> <li>• Notes</li> </ul>	Choose any two formats in a side-by-side view for ease of reviewing a patent document at issue.
Links to related information and tools	<ul style="list-style-type: none"> <li>• Chisum on Patents</li> <li>• Elsevier Scopus Previews</li> <li>• CourtLink</li> <li>• PatentOptimizer</li> </ul>	Access additional details about a patent directly from the patent to see when and where it has been cited and if it has been or is in litigation, or dig deeper into the patent itself to see vulnerabilities or gaps.
Downloads	<ul style="list-style-type: none"> <li>• Download as many as 3,000 documents from your results list at one time</li> <li>• Download up to 5,000 documents in XLSX format—or up to 20,000 in CSV format—at one time from a Work Folder</li> <li>• Download up to 500 original full PDF documents or front page only</li> <li>• Option to include link to PDF for non-subscribers</li> </ul>	You get the flexibility to incorporate your research results where and how you need them. You can even include links directly to the PDF document for recipients who do not subscribe to TotalPatent.
Visualize and compare up to three search results sets	A Venn diagram gives you a quick look at the differences between your research results. A simple click gives you specific document information.	Compare different research results sets to determine unique and overlapping documents.
Work Folders	<ul style="list-style-type: none"> <li>• Utilize up to 100 Work Folders and an unlimited number of subfolders with 20,000 records per folder and subfolder</li> <li>• Search and filter in a Work Folder, then save results to a subfolder</li> <li>• Easily export results from TotalPatent Work Folders directly to CSV files or to BizInt Smart Charts for Patents</li> </ul>	The Work Folders are yours to customize to your preferences as you use them to work with your research results.

These are only some of the highlights of TotalPatent features and functionality. Many of these features, and others coming in the near future, are based on customer input. Patent professionals from around the world tell us what would help them get the most from TotalPatent, and we develop and deliver it.

Want to learn more?  
**888.253.3901** or [www.lexisnexis.com/tellmemorepatent](http://www.lexisnexis.com/tellmemorepatent)



The LexisNexis® Suite of Intellectual Property Solutions

TotalPatent® | PatentOptimizer™ | Global IP Law Service | REEDFAX® | IP DataDirect – Patents | IP Content