

LGO Townhall Your Career Development

Christie Reynolds
Associate Director, MBA Advising
Career Development Office

August 10, 2020



Today's agenda:

Introduction to the CDO

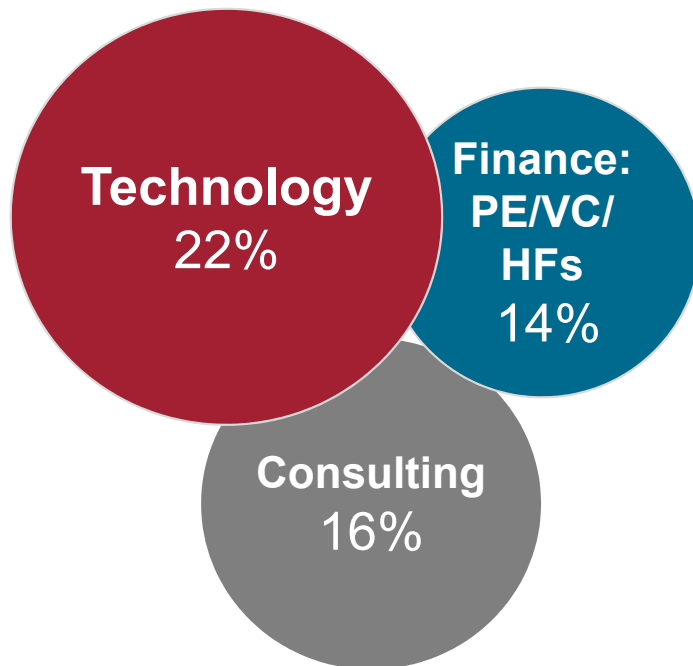


How we support the LGO Career Journey



Next steps

Industry Preferences



Healthcare/BioTech/Pharma	7%
Impact Investing	5%
Non-Profit/Ed/Social Ent.	5%
Auto/Aero/Transportation	4%
Investment Banking	4%
Retail/CPG/Luxury	3%
Oil/Energy	3%
Media/Entertainment	3%
Do Not Know	3%
Other	2%
Real Estate	2%
Investment Management	2%
Government	2%
Diversified Financial Serv.	1%

MBA CAREER EDUCATION

Pre-matriculation



Career Foundations preparation for the MBA career journey

- Self-assessments, industry guides, resume/LinkedIn materials and virtual reviews
- Optional pre-orientation workshops in August

Core Classes



Classes with Communications and Organizational Processes faculty

- Two 15.280 Communications classes and one 15.311 OP classes taught collaboratively by the Career Education team and faculty

Career Classes



Targeted sessions to customize & deepen learning of career management strategies

- Timely, led weekly on Thursday mornings by the Career Education team
- Ample time for any career questions; recorded

Career Advising



Individual career advising and small group meetings

- Career Advisors available for individual coaching, resume/cover letter/LinkedIn reviews, mock interviews, and self-assessment results reviews as well as small group advising by industry

WHERE DO YOU START?



**Know
Yourself**



**Understand
the Market**



**Create
Alignment**

SYSTEMS OF SUPPORT

Career Foundations for Incoming MBA Students



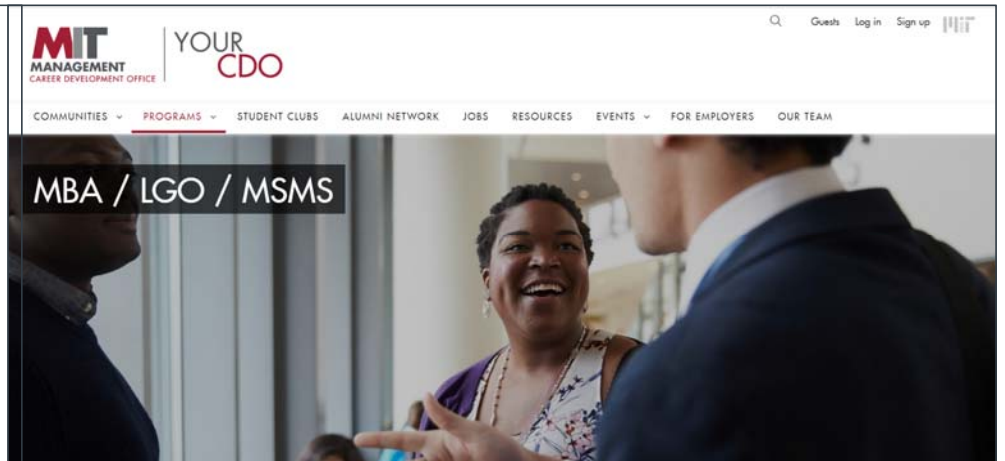
Know Yourself.



Understand the Market.



Create Alignment.

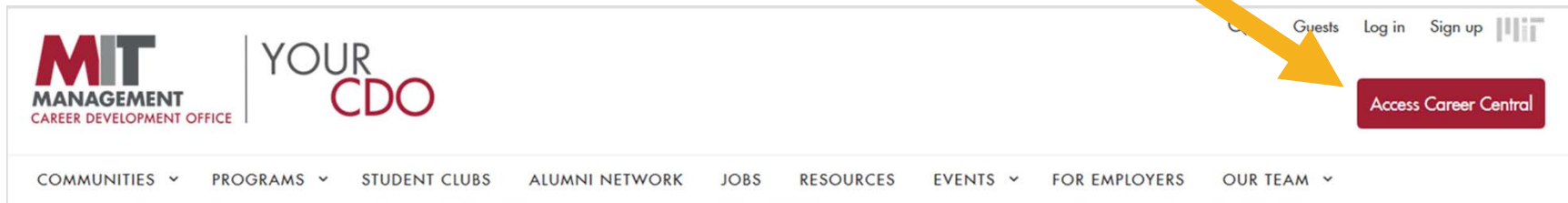


Career Foundations - Canvas

Your CDO – <https://cdo.mit.edu>

CAREER CENTRAL

Access via Your CDO

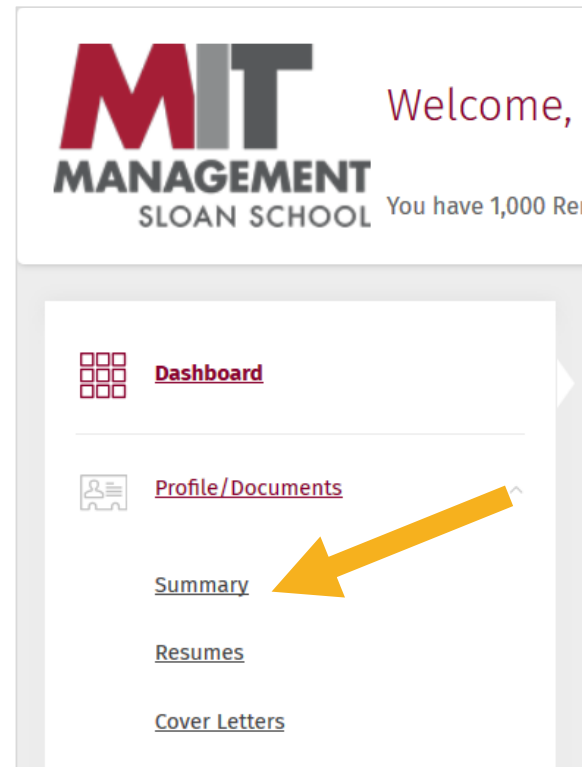


- ▶ Company contacts and recruiting history
- ▶ On-campus recruiting
- ▶ Job Postings
- ▶ Event sign-ups
- ▶ Advising appointments
- ▶ Student Database (including resumes)

CAREER CENTRAL

COMPLETE YOUR PROFILE

- ▶ Take 5 minutes to complete your Profile in Career Central
- ▶ Update your profile as your interests change during the program
- ▶ Employers cannot access 1Y resumes until October



MBA RECRUITING

Recruiting is 100% virtual in the fall

Company Presentations begin October 1

- All events are Tuesday/Thursday; lunch/evening

MBA Networking Night is October 6

CDO Coffee Chats

- We are encouraging employers to offer slots at different times of day, Mon-Sat, to accommodate student schedules.



CORE FELLOWS

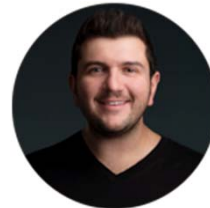
- ▶ Core Fellows are Orientation Leaders, Career Partners and Supportive Peers
- ▶ Dedicated time to meet with your core team as a group, and individually
- ▶ Assist with MBA Program, Leadership Center and CDO programs and events
- ▶ [Full list of Core Fellows is available on Your CDO](#)



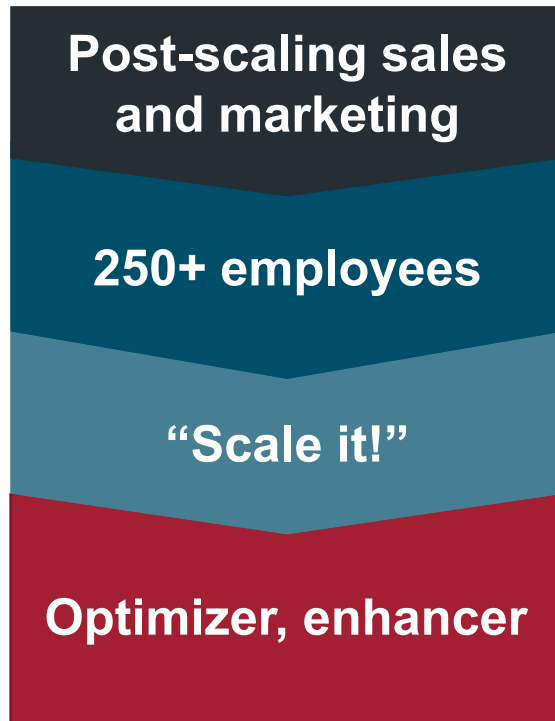
MIT SLOAN INDUSTRY ADVISORS

Industries Represented:

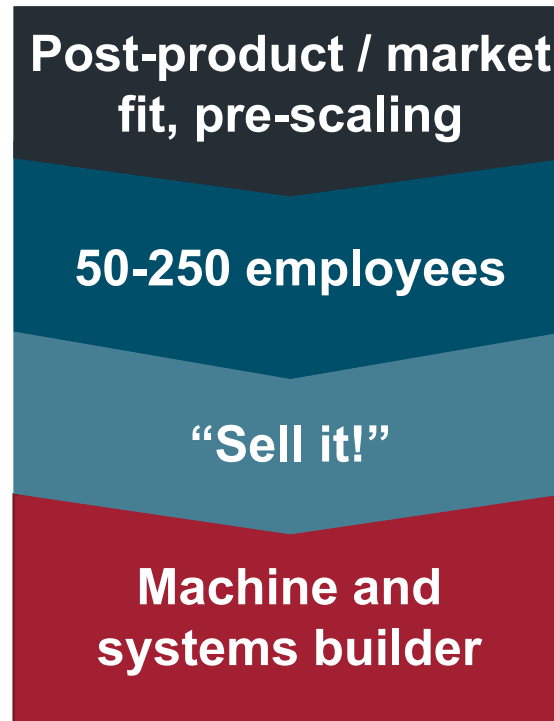
- AI/Machine Learning
- Biotech/Medical Devices
- CPG
- Digital Health/Health Tech
- Ecommerce
- Energy
- Entertainment/Media/Sports
- FinTech
- Investment Banking
- Investment Management
- IoT/Mobility Tech
- Marketing Tech
- Mobile/Communications
- Real Estate Tech
- SaaS
- Social Impact Investing/ESG
- VC



ESTABLISHED
highway



ENTERPRISE
dirt road

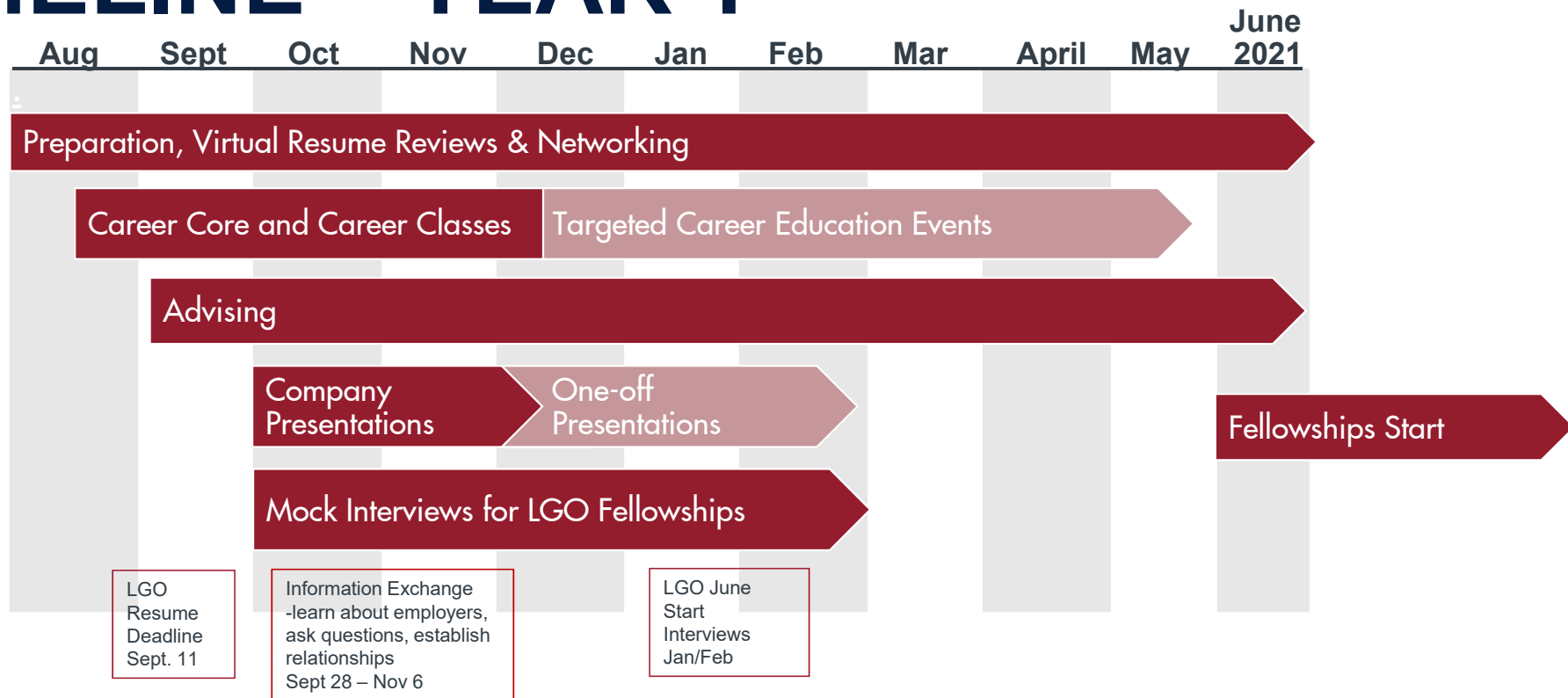


ENTREPRENEURIAL
jungle

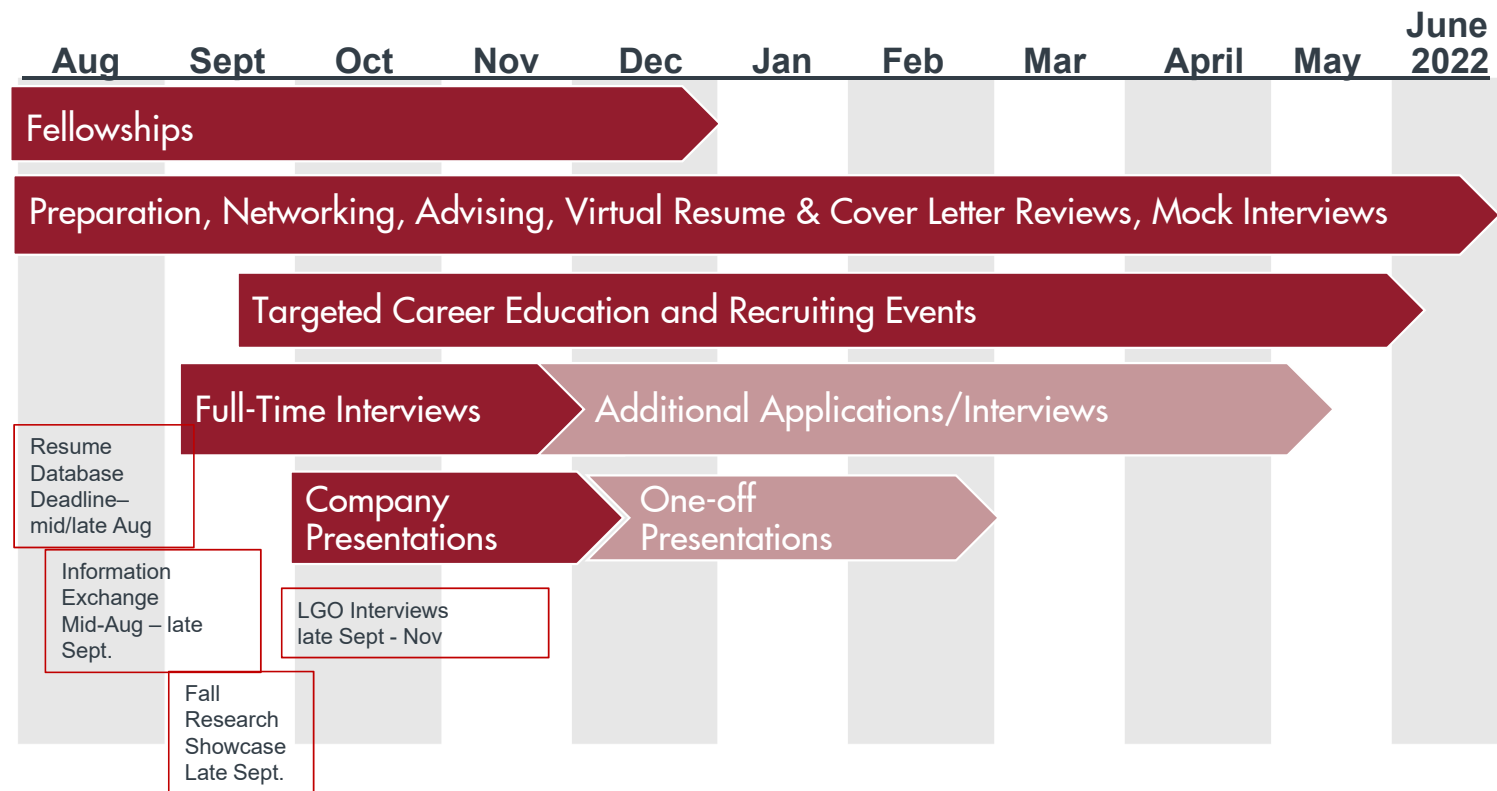


Source: Bussgang, *Entering StartUpLand*

LGO '22 CAREER DEVELOPMENT TIMELINE – YEAR 1



LGO '22 CAREER DEVELOPMENT TIMELINE – YEAR 2



STEERING YOUR CAREER

- ▶ Senior executives, alumni and 2Y MBAs speak about their industry & position
- ▶ Helpful both for those looking to make a career change and those looking to understand industry timing and opportunities
- ▶ Topics will be:
 - Consulting
 - Investment Banking
 - Technology
 - Venture Capital
 - Private Equity
 - Retail/CPG
 - Healthcare
 - Entrepreneurship/Startups

COMING UP:

Career Foundations, Virtual Resume Reviews, Career Central Profile, Weekly Newsletters

August 12th : Career Considerations for International Students

September 3rd : Get to Know the CDO/First Session of Career Core

September 10th : Comms 15.280 Telling Your Story

Steering Your Career Industry Alumni Sessions

QUESTIONS & THANK YOU!

Christie Reynolds
Associate Director, MBA Career Advising
LGO Liaison
Career Development Office
creynold@mit.edu