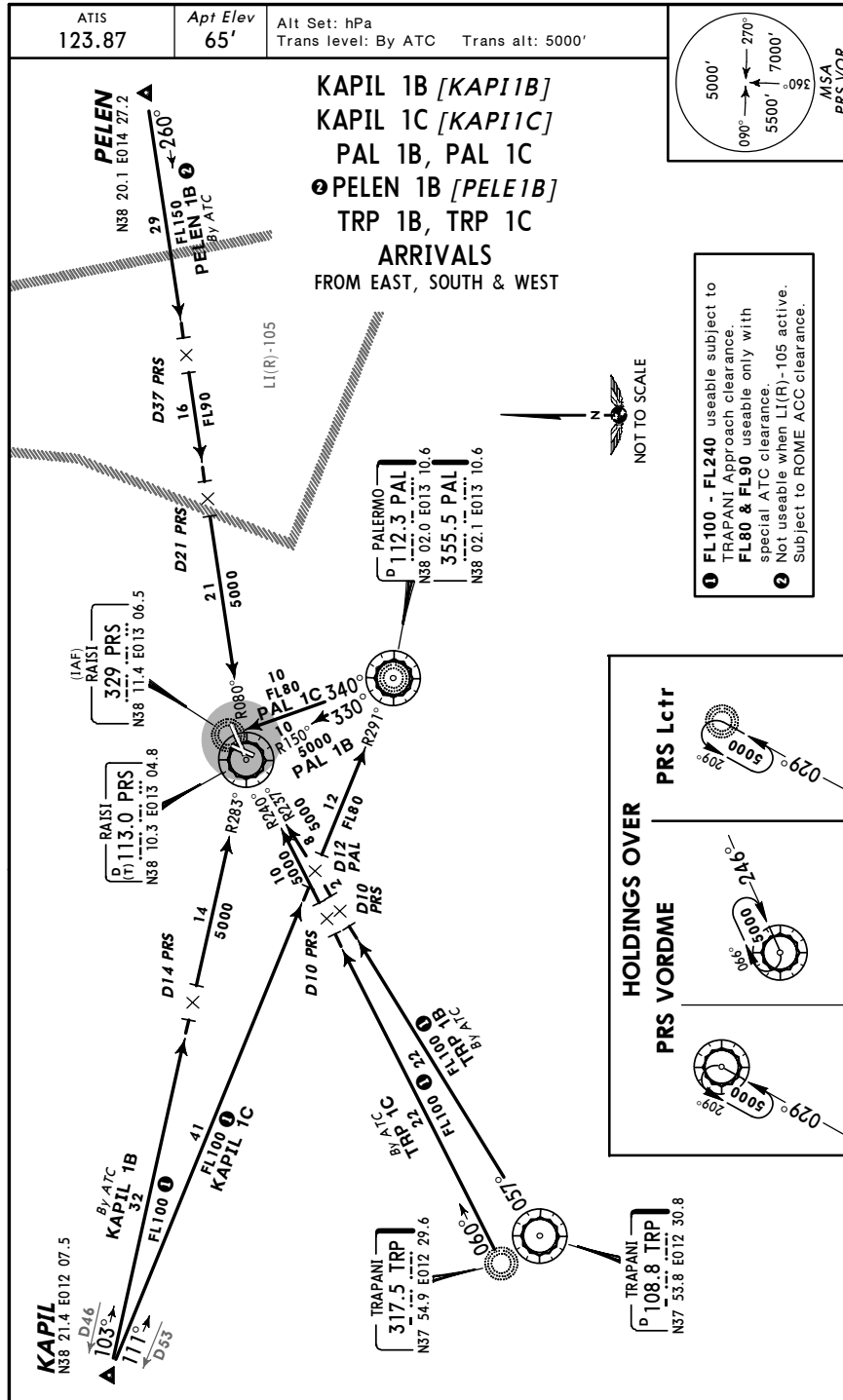


LICJ/PMO
 PUNTA RAISI

JEPPESEN
 31 AUG 07 (10-2A)

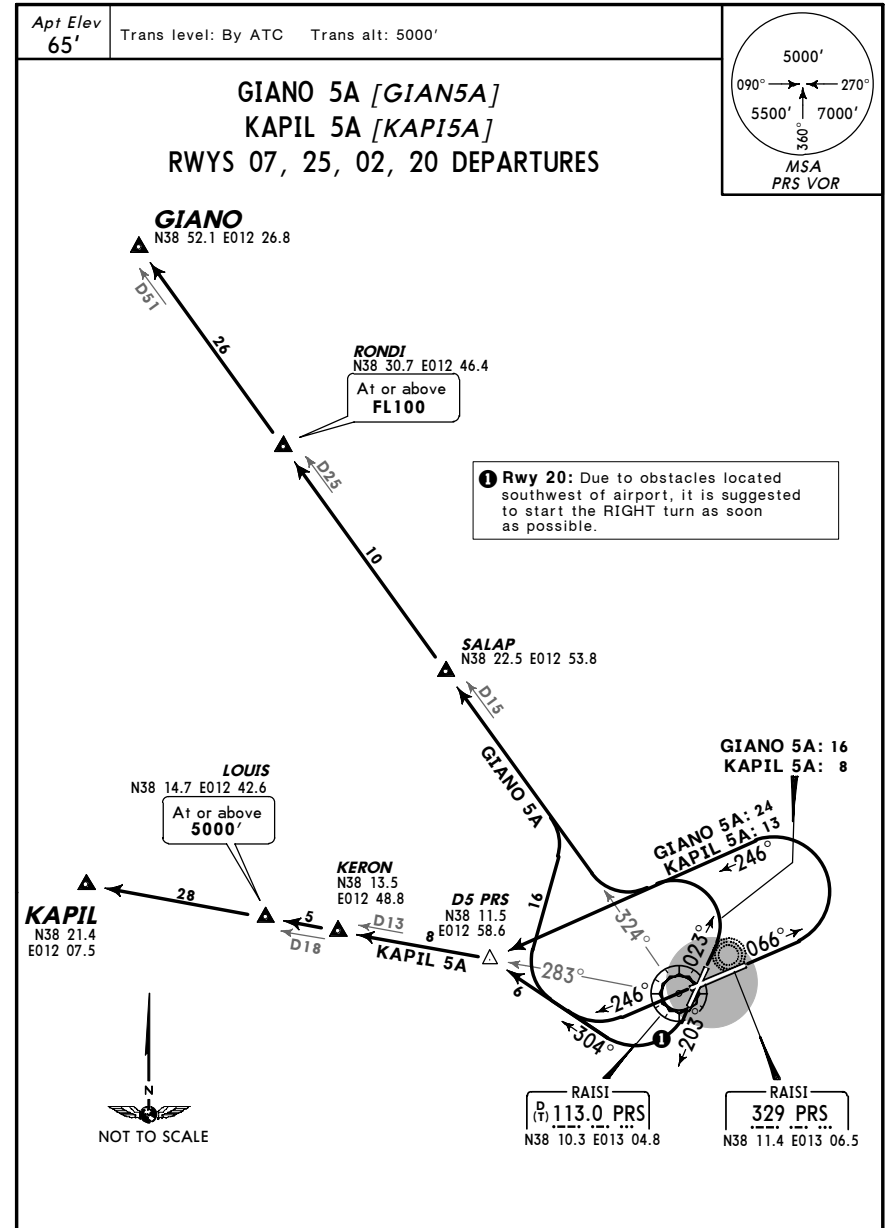
PALERMO, ITALY
 STAR



LICJ/PMO
 PUNTA RAISI

JEPPESEN
 14 MAY 04 (10-3)

PALERMO, ITALY
 SID



SID	ROUTING
GIANO 5A	Intercept PRS R-324 via RONDI to GIANO.
KAPIL 5A	Intercept PRS R-283 via LOUIS to KAPIL.

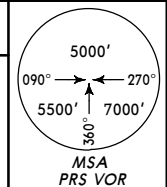
In case of PRS VOR failure following procedures apply:
Rwy 07 northbound: Turn LEFT, climb enroute to FL (or altitude) cleared by ATC.
Rwy 07 south-, east- and westbound: Turn LEFT, 360° heading, climb to 5000', return to PRS Lctr, cross at or above FL70, reach MEA within CTR as cleared by ATC.
Rwy 25 northbound: Turn RIGHT, climb enroute to FL (or altitude) cleared by ATC.
Rwy 25 south-, east- and westbound: Turn RIGHT, 360° heading, climb to 5000', return to PRS Lctr, cross at or above FL70, reach MEA within CTR as cleared by ATC.

LICJ/PMO
 PUNTA RAISI

JEPPESEN
 14 MAY 04 (10-3A)

PALERMO, ITALY
 SID

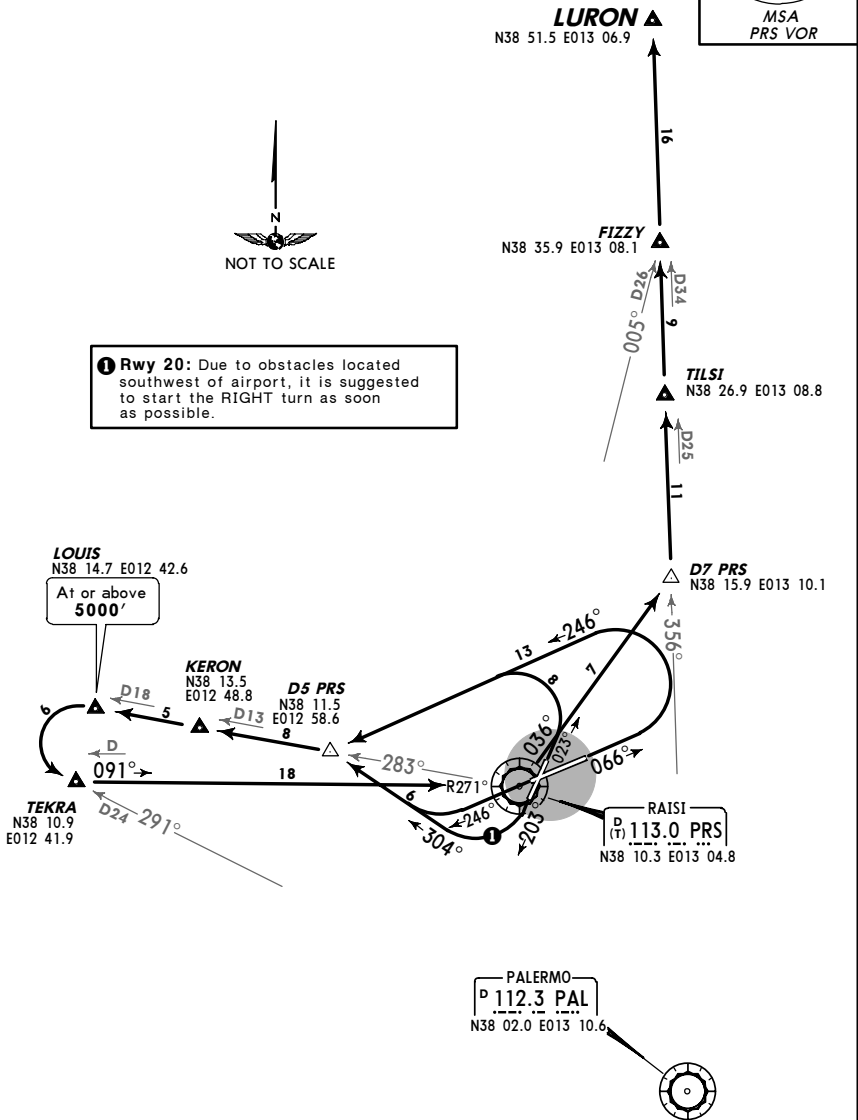
Apt Elev 65'
 Trans level: By ATC Trans alt: 5000'



LURON 5A [LURO5A]
 RWYS 07, 25, 02, 20 DEPARTURES



1 Rwy 20: Due to obstacles located southwest of airport, it is suggested to start the RIGHT turn as soon as possible.



ROUTING

Intercept PRS R-283 to LOUIS, then to TEKRA, then to PRS VORDME, PRS R-036, intercept PAL R-356 via FIZZY to LURON.
 When ATC clearance received and aircraft has crossed 5000' climbing, aircraft may turn LEFT before reaching LOUIS.

In case of PRS VOR failure following procedures apply:
Rwy 07 northbound: Turn LEFT, climb enroute to FL (or altitude) cleared by ATC.
Rwy 25 northbound: Turn RIGHT, climb enroute to FL (or altitude) cleared by ATC.

JEPPESEN 31 MAR 00 (10-3B)

PALERMO, ITALY
 PUNTA RAISI

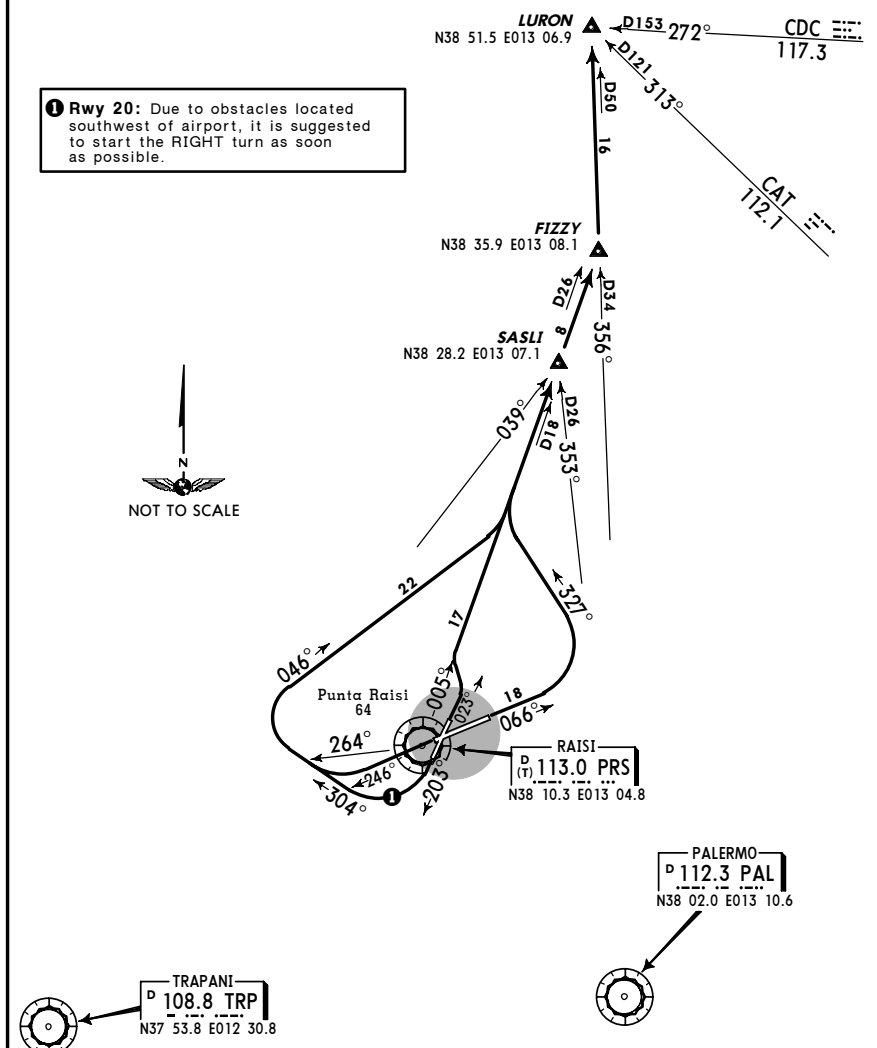
SID

TRANS LEVEL: BY ATC
 TRANS ALT: 5000'

VOR FAILURE
 Report VOR failure immediately to ATC. In this case following procedures apply:
Rwy 07 northbound: Turn LEFT, climb enroute to FL (or altitude) cleared by ATC.
Rwy 25 northbound: Turn RIGHT, climb enroute to FL (or altitude) cleared by ATC.

LURON 5B
 DEPARTURE
 (RWYS 07, 25, 02, 20)

1 Rwy 20: Due to obstacles located southwest of airport, it is suggested to start the RIGHT turn as soon as possible.



ROUTING

Intercept PRS R-005 via Sasli Int to Fizzy Int, turn LEFT, intercept PAL R-356 to Luron Int.

SID

JEPPESEN 31 MAR 00 (10-3C)

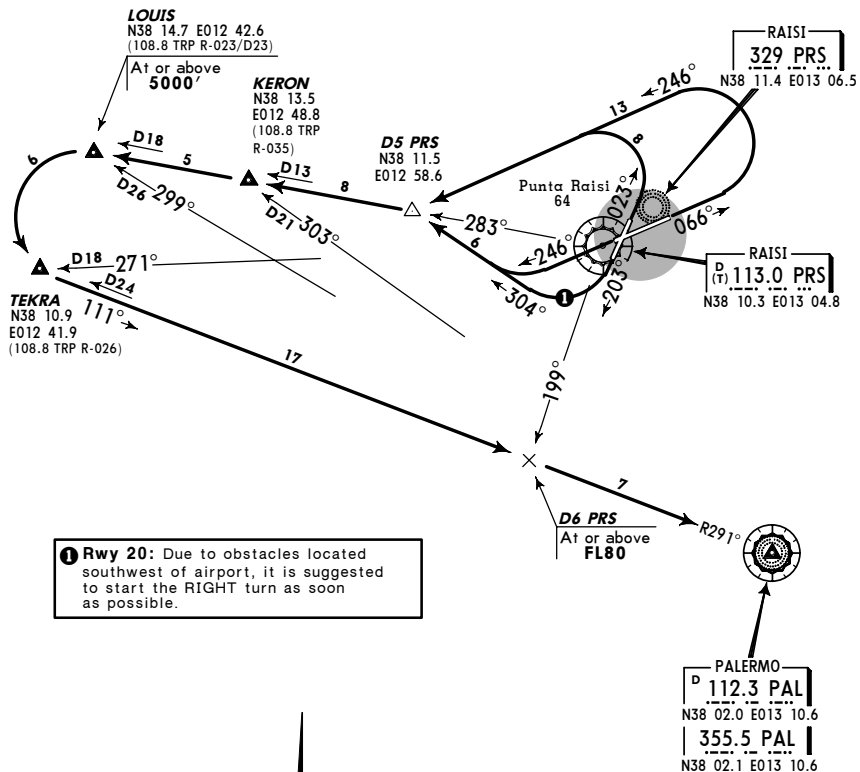
PALERMO, ITALY
 PUNTA RAISI

TRANS LEVEL: BY ATC
 TRANS ALT: 5000'

VOR FAILURE

Report VOR failure immediately to ATC. In this case following procedures apply:
Rwy 07 northbound: Turn LEFT, climb enroute to FL (or altitude) cleared by ATC.
Rwy 07 south-, east- and westbound: Turn LEFT, 360° heading, climb to 5000', return to PRS Lctr, cross at or above FL70, reach MEA within CTR as cleared by ATC.
Rwy 25 northbound: Turn RIGHT, climb enroute to FL (or altitude) cleared by ATC.
Rwy 25 south-, east- and westbound: Turn RIGHT, 360° heading, climb to 5000', return to PRS Lctr, cross at or above FL70, reach MEA within CTR as cleared by ATC.

PAL 5A
 DEPARTURE
 (RWYS 07, 25, 02, 20)



ROUTING

Intercept PRS R-283 via Keron Int to Louis Int, turn LEFT to Tekra Int, intercept PAL R-291 inbound to PAL VORDME/NDB. When ATC clearance received and aircraft has crossed 5000' climbing, aircraft may turn LEFT towards PAL VORDME/NDB before reaching Louis Int.

ALTITUDE

Cross Louis Int at or above 5000', PAL R-291/PRS R-199 at or above FL80.

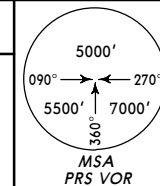
SID

LICJ/PMO
 PUNTA RAISI

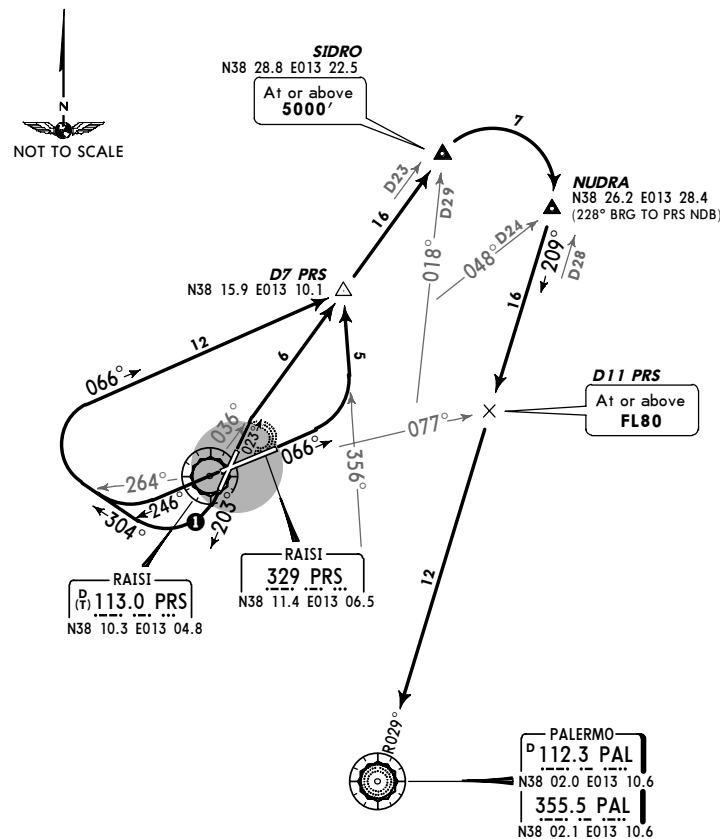
JEPPESEN
 14 MAY 04 (10-3D)

PALERMO, ITALY

Apt Elev 65' Trans level: By ATC Trans alt: 5000'



PAL 6B
 RWYS 07, 25, 02, 20 DEPARTURE



ROUTING

Intercept PRS R-036 to SIDRO, then to PAL. When ATC clearance received and aircraft has crossed 5000' climbing, aircraft may turn RIGHT before reaching SIDRO.

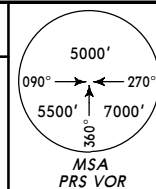
In case of PRS VOR failure following procedures apply:
Rwy 07 northbound: Turn LEFT, climb enroute to FL (or altitude) cleared by ATC.
Rwy 07 south-, east- and westbound: Turn LEFT, 360° heading, climb to 5000', return to PRS Lctr, cross at or above FL70, reach MEA within CTR as cleared by ATC.
Rwy 25 northbound: Turn RIGHT, climb enroute to FL (or altitude) cleared by ATC.
Rwy 25 south-, east- and westbound: Turn RIGHT, 360° heading, climb to 5000', return to PRS Lctr, cross at or above FL70, reach MEA within CTR as cleared by ATC.

LICJ/PMO
 PUNTA RAISI

JEPPESEN
 14 MAY 04 (10-3E)

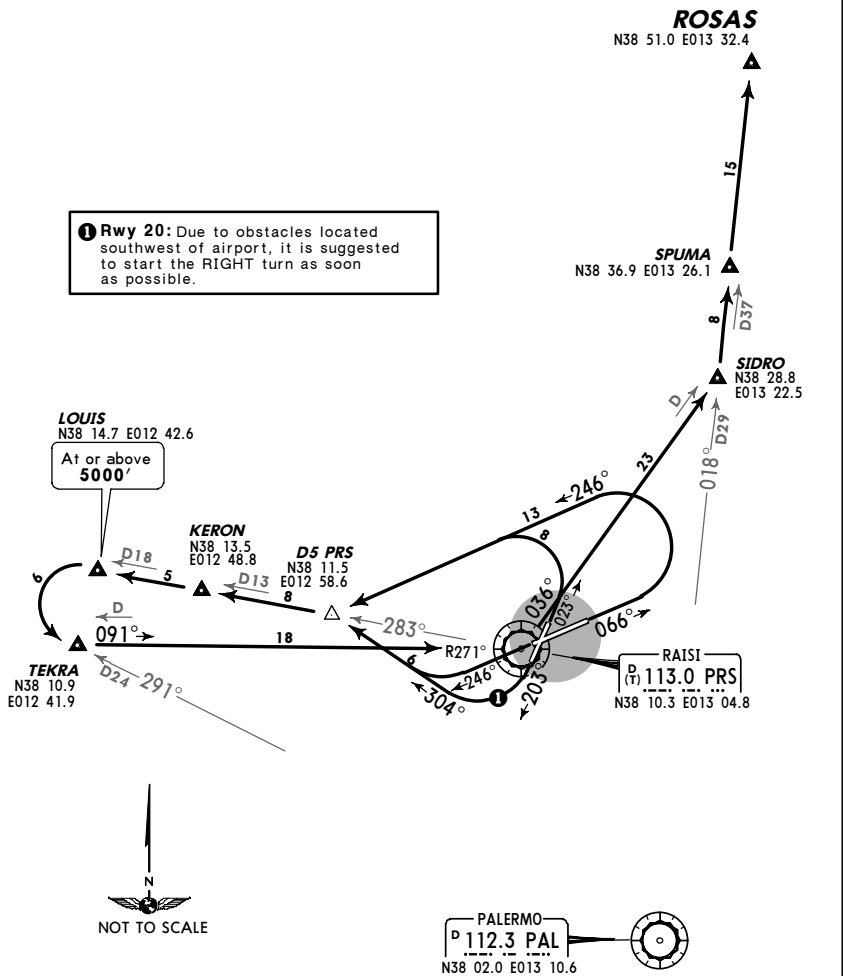
PALERMO, ITALY
 SID

Apt Elev 65'
 Trans level: By ATC Trans alt: 5000'



ROSAS 5A [ROSA5A]
 RWYS 07, 25, 02, 20 DEPARTURE

1 Rwy 20: Due to obstacles located southwest of airport, it is suggested to start the RIGHT turn as soon as possible.



ROUTING

Intercept PRS R-283 to LOUIS, then to TEKRA, then to PRS, then to SIDRO, then to ROSAS.
 When ATC clearance received and aircraft has crossed 5000' climbing, aircraft may turn LEFT before reaching LOUIS.

In case of PRS VOR failure following procedures apply:
Rwy 07 northbound: Turn LEFT, climb enroute to FL (or altitude) cleared by ATC.
Rwy 25 northbound: Turn RIGHT, climb enroute to FL (or altitude) cleared by ATC.

JEPPESEN 31 MAR 00 (10-3F)

PALERMO, ITALY
 PUNTA RAISI

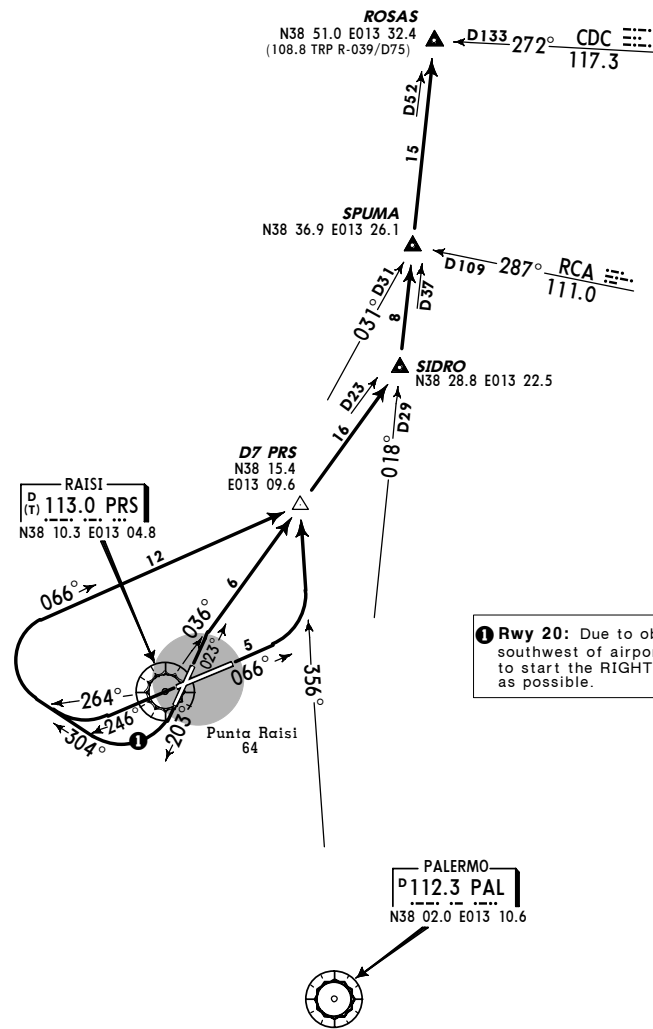
SID

TRANS LEVEL: BY ATC
 TRANS ALT: 5000'

VOR FAILURE

Report VOR failure immediately to ATC. In this case following procedures apply:
Rwy 07 northbound: Turn LEFT, climb enroute to FL (or altitude) cleared by ATC.
Rwy 25 northbound: Turn RIGHT, climb enroute to FL (or altitude) cleared by ATC.

ROSAS 5B
 DEPARTURE
 (RWYS 07, 25, 02, 20)



1 Rwy 20: Due to obstacles located southwest of airport, it is suggested to start the RIGHT turn as soon as possible.

ROUTING

Intercept PRS R-036 to Sidro Int, intercept PAL R-018 via Spuma Int to Rosas Int.

SID

JEPPESEN 31 MAR 00 (10-3G)

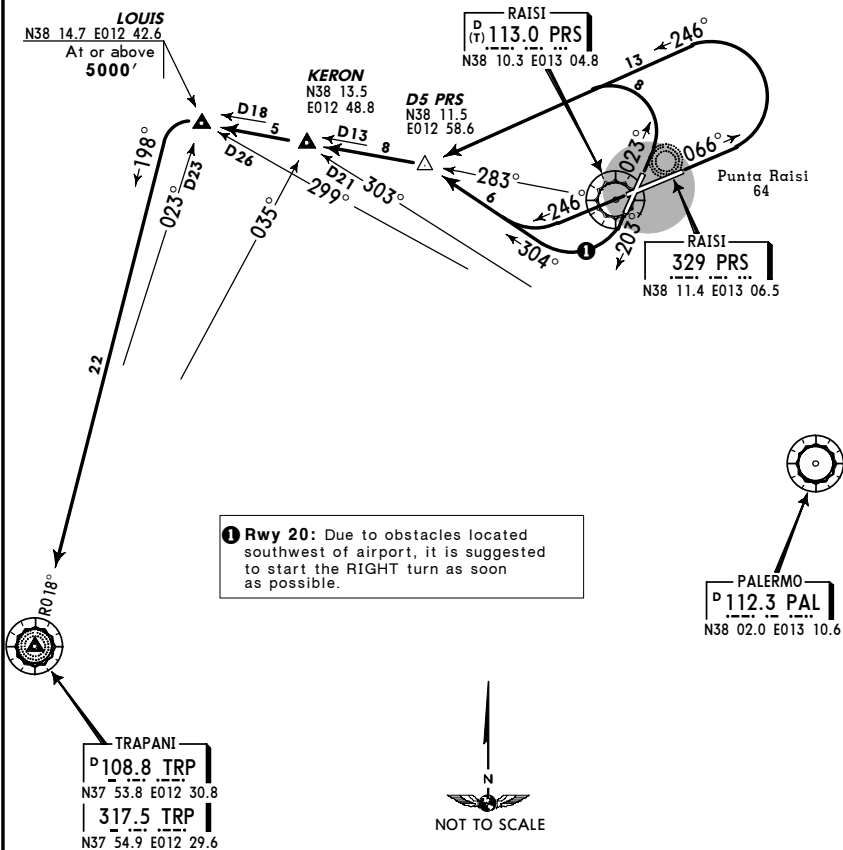
PALERMO, ITALY
 PUNTA RAISI

TRANS LEVEL: BY ATC
 TRANS ALT: 5000'

VOR FAILURE

Report VOR failure immediately to ATC. In this case following procedures apply:
Rwy 07 southbound: Turn LEFT, 360° heading, climb to 5000', return to PRS Locator cross at or above FL70, reach MEA within CTR as cleared by ATC.
Rwy 25 southbound: Turn RIGHT, 360° heading, climb to 5000', return to PRS Locator cross at or above FL70, reach MEA within CTR as cleared by ATC.

TRP 5A
 DEPARTURE
 (RWYS 07, 25, 02, 20)



NOT TO SCALE

ROUTING	ALTITUDE
Intercept PRS R-283 via Keron Int, turn LEFT, intercept TRP R-018 inbound to TRP VORDME/NDP.	Cross Louis Int at or above 5000'.

LICJ/PMO

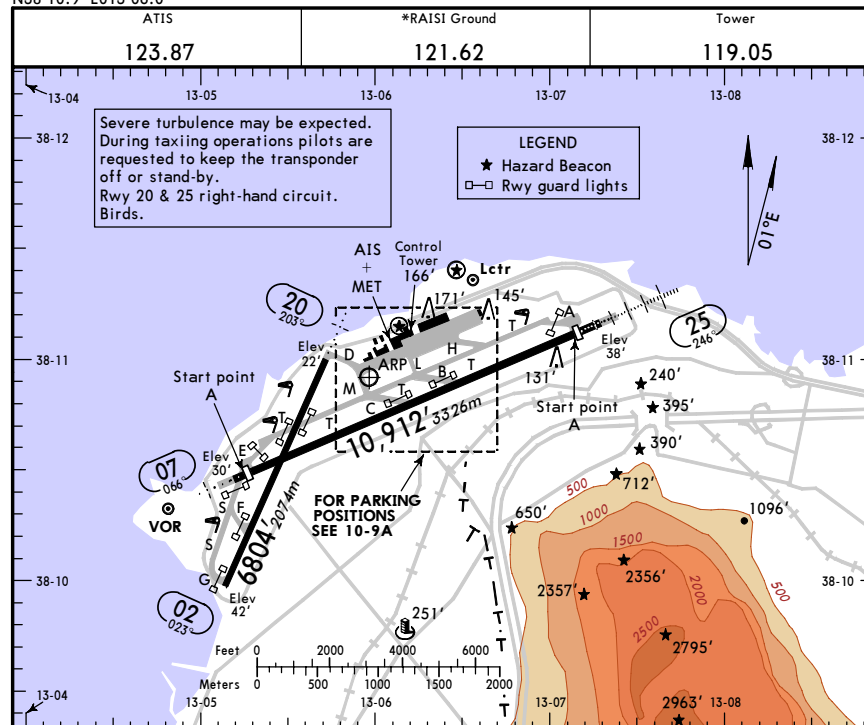
Apt Elev 65'
 N38 10.9 E013 06.0

JEPPESEN

31 AUG 07 (10-9)

PALERMO, ITALY

PUNTA RAISI



RWY	HIRL (60m) CL (30m)	HIALS REIL PAPI	USABLE LENGTHS		TAKE-OFF	WIDTH
			Threshold	Glide Slope		
02	HIRL (60m) CL (30m)		6795' 2071m	5795' 1766m		148' 45m
07	HIRL (60m) CL (30m) HIALS PAPI-L (3.0°, MEHT 16')		10,509' 3203m			197' 60m
25	HIRL (60m) CL (30m) HIALS PAPI		10,233' 3119m	9283' 2830m		

① (3.0°, MEHT 20') ② (3.0°, MEHT 18')

③ TAKE-OFF RUN AVAILABLE
 RWY 07: From rwy head ① 10,912' (3326m) start point A 10,512' (3204m)
 RWY 25: From rwy head ④ 10,912' (3326m) start point A 9941' (3030m)

④ On request.

USE OF RWY 02

RWY 02: Restricted to ops in VMC HJ only.
 HN not available for landing.

SURFACE HORIZONTAL WIND SHEAR DETECTION SYSTEM

Information concerning the probable surface horizontal wind shear will be provided by ATC with following phraseology:
 1. Surface horizontal wind shear moderate/severe on THR/THRS...
 2. No surface horizontal wind shear alert.

JAR-OPS	TAKE-OFF
	All Rwys
A	
B	
C	vis 600m
D	

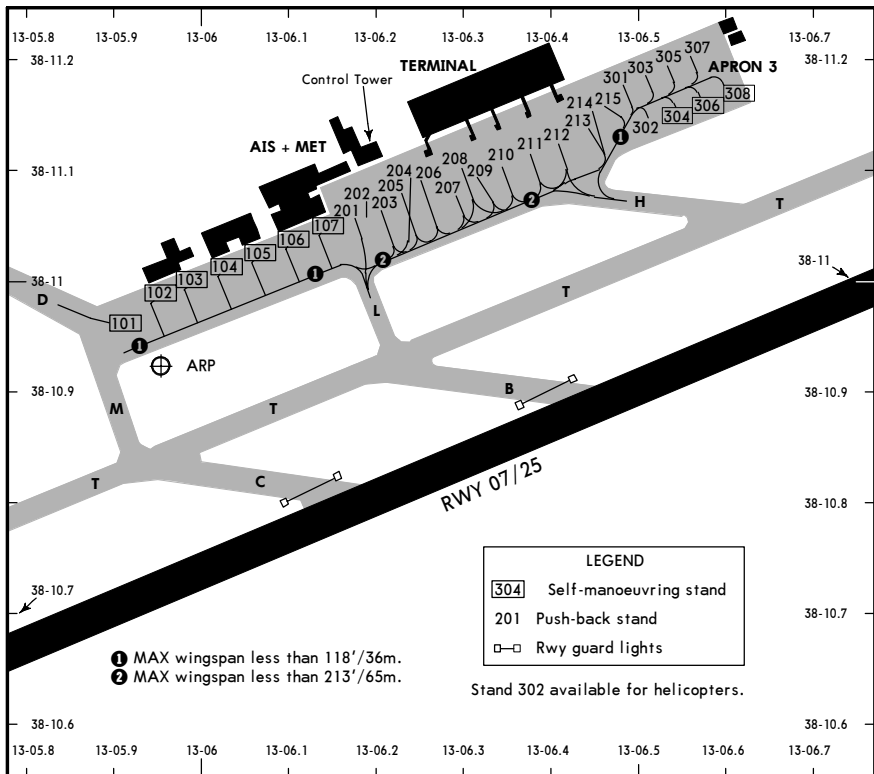
LICJ/PMO

JEPPESEN

PALERMO, ITALY

31 AUG 07 (10-9A)

PUNTA RAISI



For taxiing on apron follow-me is compulsory.
 Taxiing to/from parking area with caution and only by follow/me due to work in progress. Acft parked near buildings shall leave position with minimum break away power.

INS COORDINATES

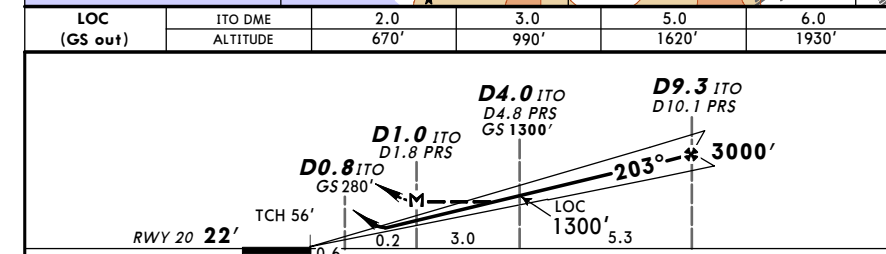
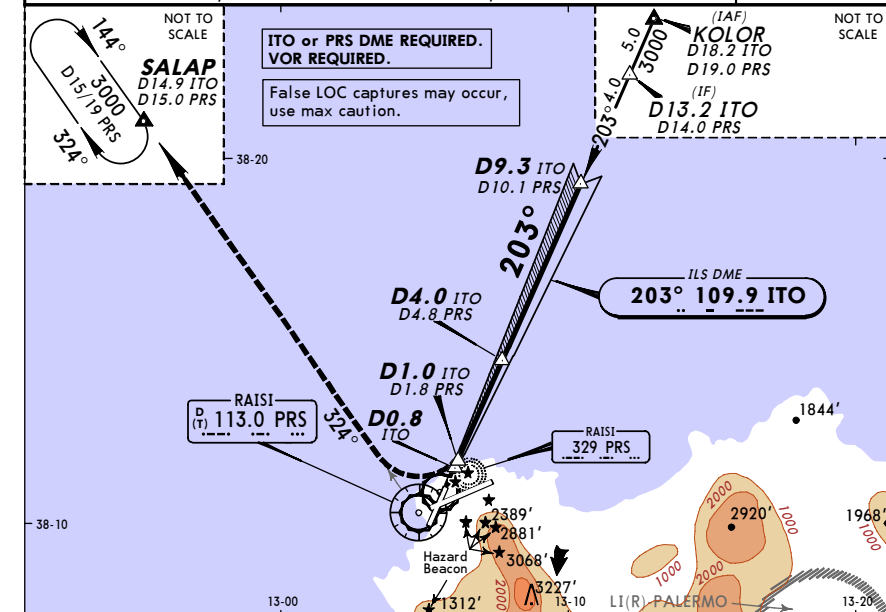
STAND No.	COORDINATES	STAND No.	COORDINATES
101	N38 11.0 E013 05.9	213 thru 215	N38 11.2 E013 06.4
102 thru 104	N38 11.0 E013 06.0	301	N38 11.2 E013 06.5
105, 106	N38 11.0 E013 06.1	302	N38 11.1 E013 06.5
107	N38 11.1 E013 06.1	303 thru 305	N38 11.2 E013 06.5
201 thru 206	N38 11.2 E013 06.1	306	N38 11.2 E013 06.6
207 thru 210	N38 11.1 E013 06.3	307	N38 11.2 E013 06.5
211, 212	N38 11.1 E013 06.4	308	N38 11.2 E013 06.6

LICJ/PMO
 PUNTA RAISI

JEPPESEN
 31 AUG 07 (11-1)

PALERMO, ITALY
 ILS Z Rwy 20

ATIS	PALERMO Approach (R)	RAISI Tower	*Ground
123.87	120.2	119.05	121.62
LOC ITO	Final Apch Crs	GS DA.0 ITO	ILS DA(H) Refer to Minimums
109.9	203°	1300' (1278')	Apt Elev 65' RWY 22'



Gnd speed-Kts	70	90	100	120	140	160		HIALS	3000'	PRS	113.0
ILS GS 3.00° or								REIL			R-324
LOC Descent Gradient 5.2%	377	484	538	646	753	861		PAPI			
MAP at D1.0 ITO/D1.8 PRS								RT			

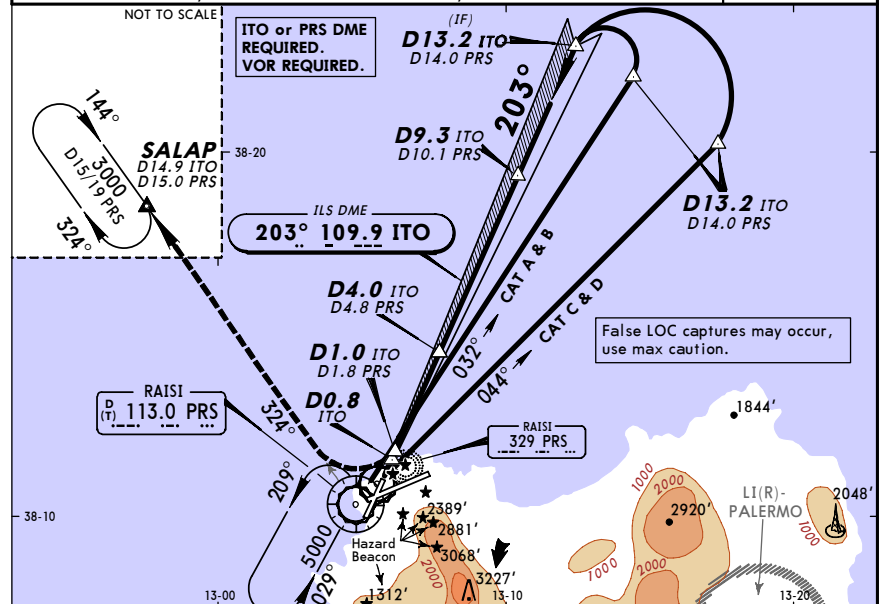
JAR-OPS				STRAIGHT-IN LANDING RWY 20				CIRCLE-TO-LAND			
ILS				LOC (GS out)				Not authorized Southeast of airport			
DA(H) A: 345' (323') C: 365' (343')		B: 355' (333') D: 375' (353')		MDA(H) 450' (428')							
FULL		ALS out		ALS out		ALS out					
A			RVR 1200m				RVR 1500m	Max Kts	MDA(H)	VIS	
B	RVR 900m	RVR 1200m	RVR 1300m				RVR 1800m	100	1000' (935')	1500m	
C			RVR 1400m				RVR 2000m	135	1000' (935')	1600m	
D			RVR 1600m					180	1000' (935')	2400m	
								205	1000' (935')	3600m	

LICJ/PMO
 PUNTA RAISI

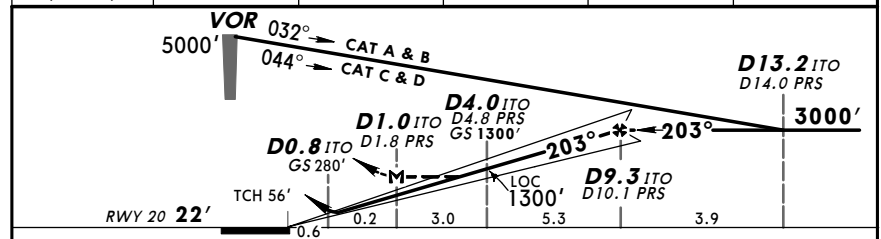
JEPPESEN
 31 AUG 07 (11-2)

PALERMO, ITALY
 ILS Y Rwy 20

ATIS 123.87		PALERMO Approach (R) 120.2		RAISI Tower 119.05		*Ground 121.62	
LOC ITO 109.9	Final Apch Crs 203°	GS D4.0 ITO 1300' (1278')	ILS DA(H) Refer to Minimums	Apt Elev 65' RWY 22'			
MISSED APCH: As soon as possible turn RIGHT to join and follow R-324 climbing to 3000' and proceed to SALAP holding.							
Alt Set: hPa		Rwy Elev: 1 hPa		Trans level: By ATC		Trans alt: 5000'	



LOC (GS out)	ITO DME	2.0	3.0	5.0	6.0
	ALTITUDE	670'	990'	1620'	1930'



Gnd speed-Kts	70	90	100	120	140	160		HIALS	3000'	PR	113.0
ILS GS 3.00° or LOC Descent Gradient 5.2%	377	484	538	646	753	861		REIL: PAPI: PAPI	RT		R-324
MAP at D1.0 ITO/D1.8 PRS											

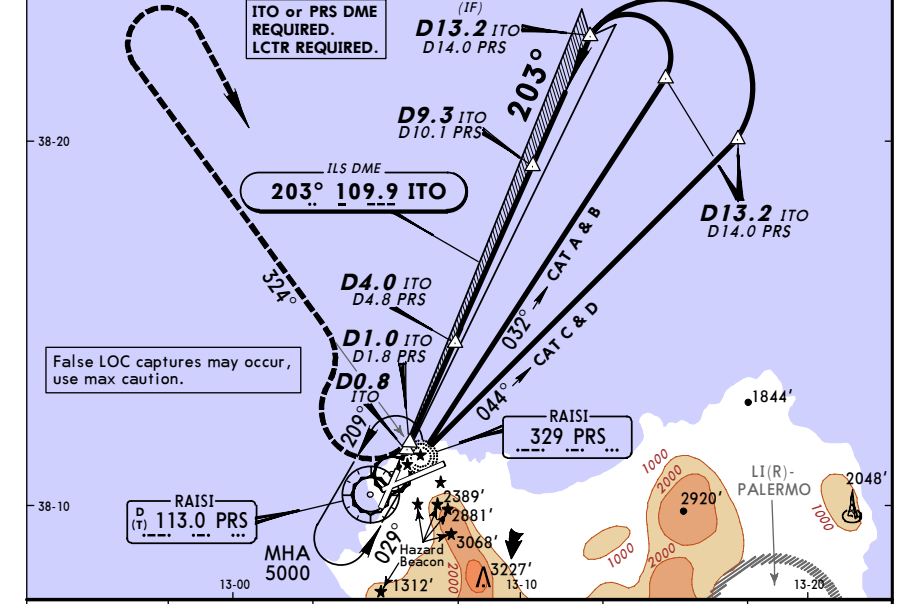
JAR-OPS STRAIGHT-IN LANDING RWY 20				CIRCLE-TO-LAND			
ILS		LOC (GS out)		Not authorized Southeast of airport			
DA(H) A: 345' (323') C: 365' (343')		MDA(H) 450' (428')					
B: 355' (333') D: 375' (353')		ALS out					
A				Max Kts	MDA(H)	VIS	
B	RVR 900m	RVR 1200m		100	1000' (935')	1500m	
C				135	1000' (935')	1600m	
D				180	1000' (935')	2400m	
				205	1000' (935')	3600m	

LICJ/PMO
 PUNTA RAISI

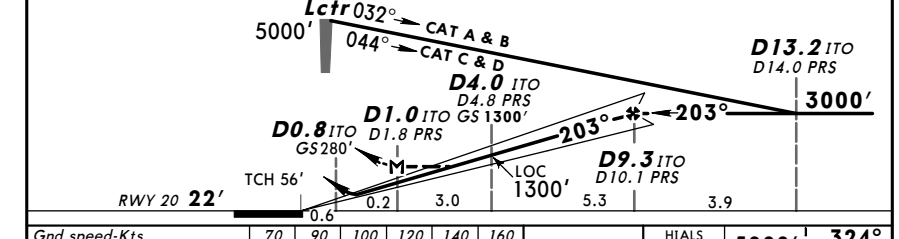
JEPPESEN
 31 AUG 07 (11-3)

PALERMO, ITALY
 ILS X Rwy 20

ATIS 123.87		PALERMO Approach (R) 120.2		RAISI Tower 119.05		*Ground 121.62	
LOC ITO 109.9	Final Apch Crs 203°	GS D4.0 ITO 1300' (1278')	ILS DA(H) Refer to Minimums	Apt Elev 65' RWY 22'			
MISSED APCH: As soon as possible turn RIGHT onto 324° from Lctr climbing to 5000', then turn RIGHT to Lctr.							
Alt Set: hPa		Rwy Elev: 1 hPa		Trans level: By ATC		Trans alt: 5000'	



LOC (GS out)	ITO DME	2.0	3.0	5.0	6.0
	ALTITUDE	670'	990'	1620'	1930'



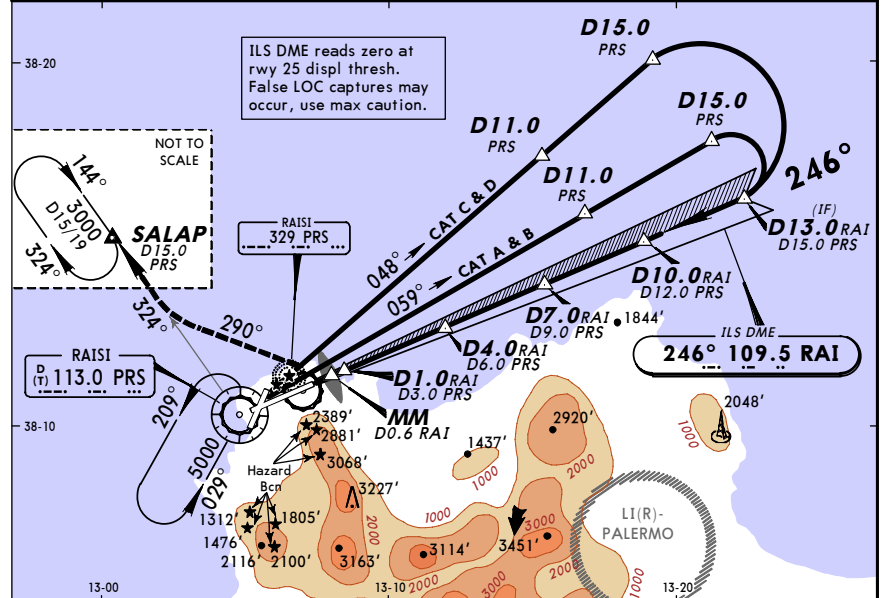
Gnd speed-Kts	70	90	100	120	140	160		HIALS	5000'	324°
ILS GS 3.00° or LOC Descent Gradient 5.2%	377	484	538	646	753	861		REIL: PAPI: PAPI	RT	onto PRS
MAP at D1.0 ITO/D1.8 PRS										

JAR-OPS STRAIGHT-IN LANDING RWY 20				CIRCLE-TO-LAND			
ILS		LOC (GS out)		Not authorized Southeast of airport			
DA(H) A: 345' (323') C: 365' (343')		MDA(H) 450' (428')					
B: 355' (333') D: 375' (353')		ALS out					
A				Max Kts	MDA(H)	VIS	
B	RVR 900m	RVR 1200m		100	1000' (935')	1500m	
C				135	1000' (935')	1600m	
D				180	1000' (935')	2400m	
				205	1000' (935')	3600m	

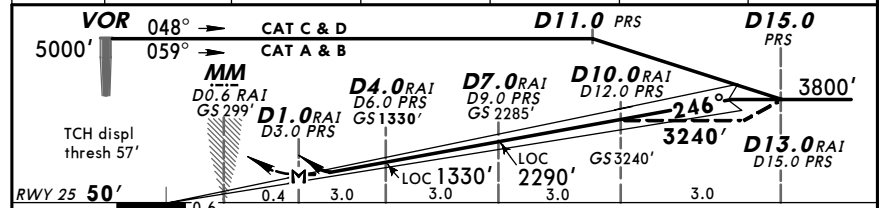
LICJ/PMO PALERMO, ITALY
 PUNTA RAISI ILS DME-Papa Rwy 25

JEPPESEN
 31 AUG 07 (11-4)

ATIS 123.87		PALERMO Approach (R) 120.2		RAISI Tower 119.05		*Ground 121.62	
LOC RAI 109.5	Final Apch Crs 246°	GS D4.0 RAI 1330' (1280')	ILS DA(H) 500' (450')	Apt Elev 65' RWY 50'			
MISSED APCH: As soon as possible turn RIGHT onto 290° to join and follow R-324, climbing to 3000' and proceed to SALAP holding.							
Alt Set: hPa		Rwy Elev: 2 hPa		Trans level: By ATC		Trans alt: 5000'	



LOC (GS out)	RAI DME ALTITUDE	2.0	3.0	4.0	5.0	6.0
		690'	1010'	1330'	1650'	1970'



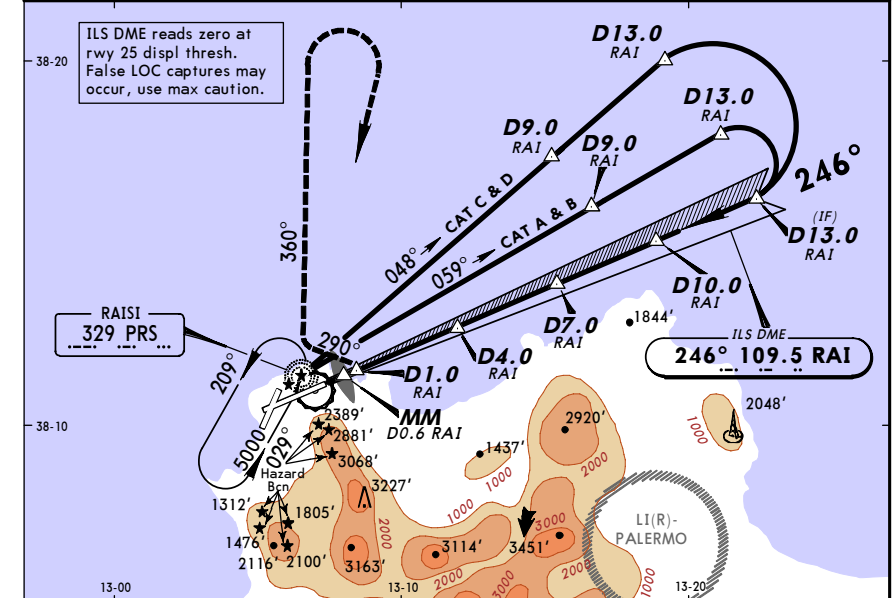
Gnd speed-Kts	70	90	100	120	140	160	HIALS PAPI PAPI 290°
ILS GS 3.00° or	377	485	539	647	755	862	
LOC Descent Gradient 5.2%							

JAR-OPS STRAIGHT-IN LANDING RWY 25				CIRCLE-TO-LAND 1			
ILS		LOC (GS out)		Not authorized Southeast of airport			
DA(H) 500' (450')		MDA(H) 500' (450')					
FULL	ALS out	ALS out	ALS out	Max Kts	MDA(H)	VIS	
A				100	1000' (935')	1500m	
B				135	1000' (935')	1600m	
C	RVR 800m	RVR 1200m	RVR 1200m	180	1000' (935')	2400m	
D			RVR 1600m	205	1000' (935')	3600m	

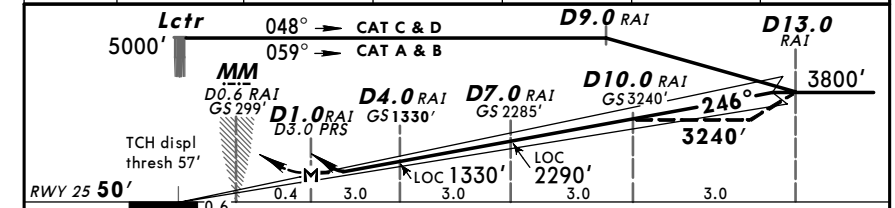
LICJ/PMO PALERMO, ITALY
 PUNTA RAISI ILS DME-Sierra Rwy 25

JEPPESEN
 31 AUG 07 (11-5)

ATIS 123.87		PALERMO Approach (R) 120.2		RAISI Tower 119.05		*Ground 121.62	
LOC RAI 109.5	Final Apch Crs 246°	GS D4.0 RAI 1330' (1280')	ILS DA(H) 500' (450')	Apt Elev 65' RWY 50'			
MISSED APCH: As soon as possible turn RIGHT onto 290° to join 360° from Lctr climbing to 5000', then turn RIGHT to Lctr.							
Alt Set: hPa		Rwy Elev: 2 hPa		Trans level: By ATC		Trans alt: 5000'	



LOC (GS out)	RAI DME ALTITUDE	2.0	3.0	4.0	5.0	6.0
		690'	1010'	1330'	1650'	1970'



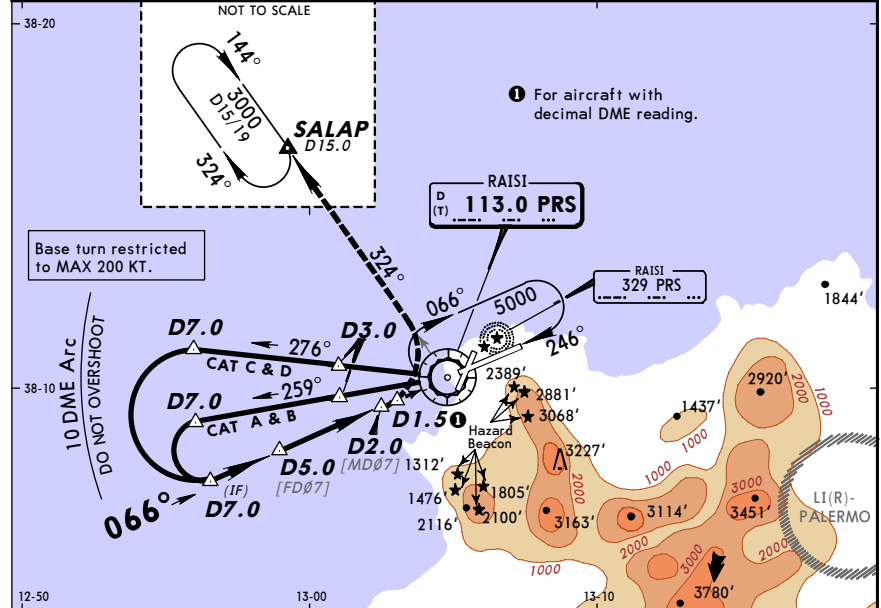
Gnd speed-Kts	70	90	100	120	140	160	HIALS PAPI PAPI 290°
ILS GS 3.00° or	377	485	539	647	755	862	
LOC Descent Gradient 5.2%							

JAR-OPS STRAIGHT-IN LANDING RWY 25				CIRCLE-TO-LAND 1			
ILS		LOC (GS out)		Not authorized Southeast of airport			
DA(H) 500' (450')		MDA(H) 500' (450')					
FULL	ALS out	ALS out	ALS out	Max Kts	MDA(H)	VIS	
A				100	1000' (935')	1500m	
B				135	1000' (935')	1600m	
C	RVR 800m	RVR 1200m	RVR 1200m	180	1000' (935')	2400m	
D			RVR 1600m	205	1000' (935')	3600m	

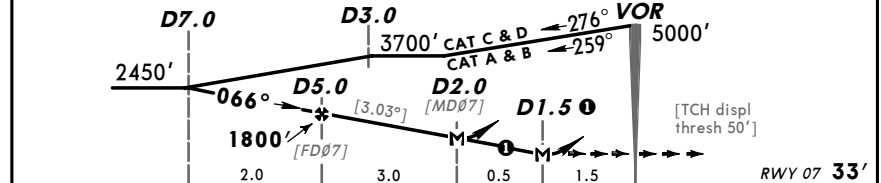
LICJ/PMO PALERMO, ITALY
 PUNTA RAISI VOR DME-Papa Rwy 07

JEPPESEN
 31 AUG 07 (13-1)

ATIS 123.87		PALERMO Approach (R) 120.2		RAISI Tower 119.05	*Ground 121.62
VOR PRS 113.0	Final Apch Crs 066°	Minimum Alt D5.0 1800' (1767')	MDA(H) (CONDITIONAL) 710' (677')	Apt Elev 65' RWY 33'	
MISSED APCH: Turn LEFT (MAX 160 KT) to join and follow R-324 climbing to 3000' and proceed to SALAP holding.					
Alt Set: hPa	Rwy Elev: 2 hPa	Trans level: By ATC		Trans alt: 5000'	MSA PRS VOR



PRS DME	5.0	4.0	3.0	2.0
ALTITUDE	1800'	1480'	1160'	840'



TO DISPLACED THRESHOLD						0.4	0
Gnd speed-Kts	70	90	100	120	140	160	
Desc Grad 5.29% or Descent angle [3.03°]	375	482	536	643	750	858	
MAP at D2.0	MAP at D1.5						
	3000'		160 KT		PRS		
	LT		MAX		113.0		
					R-324		

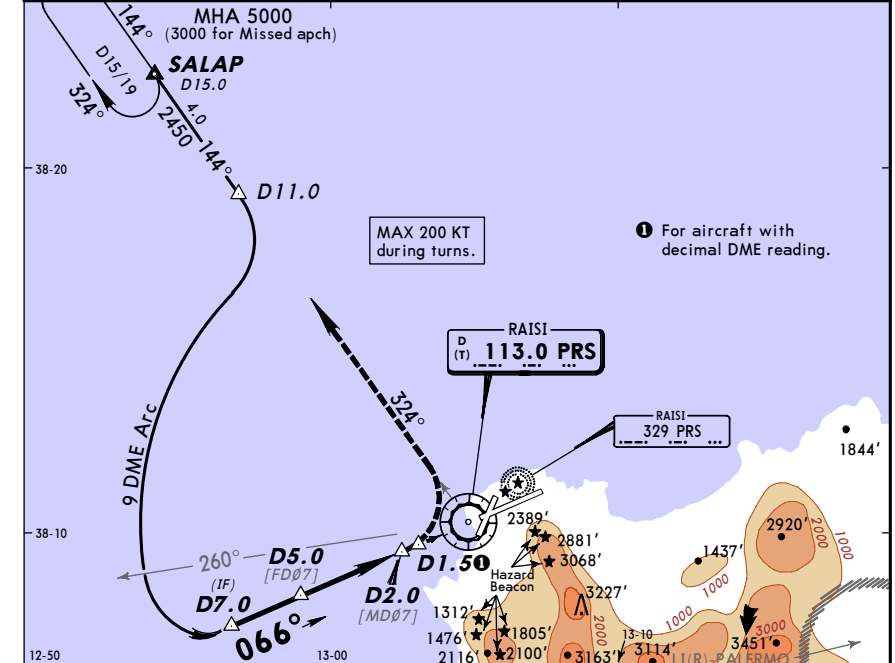
JAR-OPS STRAIGHT-IN LANDING RWY 07				CIRCLE-TO-LAND			
With decimal DME reading MDA(H) 710' (677')				Not authorized Southeast of airport MDA(H) 840' (807')			
ALS out				ALS out			
A	RVR 1500m		RVR 1500m		Max Kts	MDA(H)	VIS
B	RVR 1500m		RVR 1500m		100	1000' (935')	1500m
C	RVR 1800m	RVR 2000m	RVR 1800m	RVR 2000m	135	1000' (935')	1600m
D	RVR 1800m	RVR 2000m	RVR 1800m	RVR 2000m	180	1000' (935')	2400m
	RVR 2000m	RVR 2000m	RVR 2000m	RVR 2000m	205	1000' (935')	3600m

To rwy 02 restricted to ops in VMC HJ only.

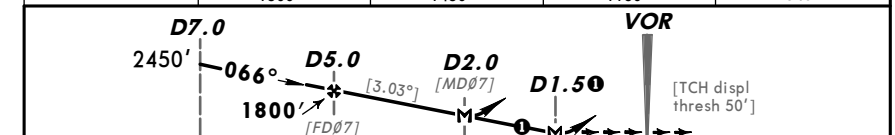
LICJ/PMO PALERMO, ITALY
 PUNTA RAISI VOR DME-Sierra Rwy 07

JEPPESEN
 31 AUG 07 (13-2)

ATIS 123.87		PALERMO Approach (R) 120.2		RAISI Tower 119.05	*Ground 121.62
VOR PRS 113.0	Final Apch Crs 066°	Minimum Alt D5.0 1800' (1767')	MDA(H) (CONDITIONAL) 710' (677')	Apt Elev 65' RWY 33'	
MISSED APCH: Turn LEFT (MAX 160 KT) to join and follow R-324 climbing to 3000' and proceed to SALAP holding.					
Alt Set: hPa	Rwy Elev: 2 hPa	Trans level: By ATC		Trans alt: 5000'	MSA PRS VOR



PRS DME	5.0	4.0	3.0	2.0
ALTITUDE	1800'	1480'	1160'	840'



TO DISPLACED THRESHOLD						0.4	0
Gnd speed-Kts	70	90	100	120	140	160	
Desc Grad 5.29% or Descent angle [3.03°]	375	482	536	643	750	858	
MAP at D2.0	MAP at D1.5						
	3000'		160 KT		PRS		
	LT		MAX		113.0		
					R-324		

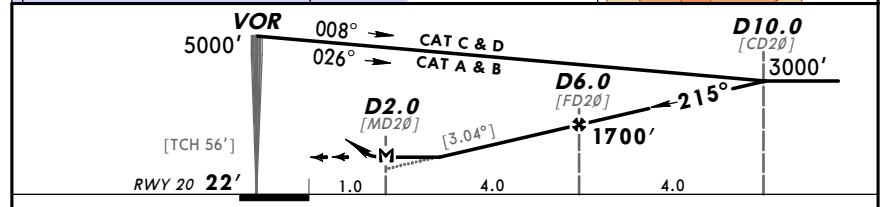
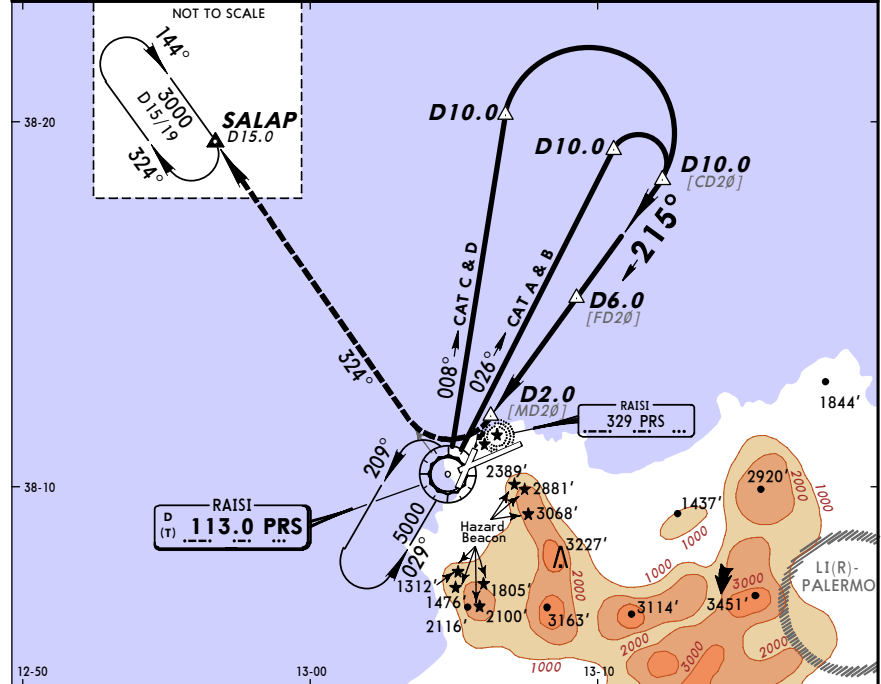
JAR-OPS STRAIGHT-IN LANDING RWY 07				CIRCLE-TO-LAND			
With decimal DME reading MDA(H) 710' (677')				Not authorized Southeast of airport MDA(H) 840' (807')			
ALS out				ALS out			
A	RVR 1500m		RVR 1500m		Max Kts	MDA(H)	VIS
B	RVR 1500m		RVR 1500m		100	1000' (935')	1500m
C	RVR 1800m	RVR 2000m	RVR 1800m	RVR 2000m	135	1000' (935')	1600m
D	RVR 1800m	RVR 2000m	RVR 1800m	RVR 2000m	180	1000' (935')	2400m
	RVR 2000m	RVR 2000m	RVR 2000m	RVR 2000m	205	1000' (935')	3600m

To rwy 02 restricted to ops in VMC HJ only.

LICJ/PMO PALERMO, ITALY
 PUNTA RAISI VOR DME Rwy 20

JEPPESEN
 31 AUG 07 (13-3)

ATIS 123.87		PALERMO Approach (R) 120.2		RAISI Tower 119.05	*Ground 121.62
VOR PRS 113.0	Final Apch Crs 215°	Minimum Alt D6.0 1700' (1678')	MDA(H) 500' (478')	Apt Elev 65' RWY 22'	
MISSED APCH: Turn RIGHT to join and follow R-324 climbing to 3000' and proceed to SALAP holding.					
Alt Set: hPa	Rwy Elev: 1 hPa	Trans level: By ATC	Trans alt: 5000'	MSA PRS VOR	



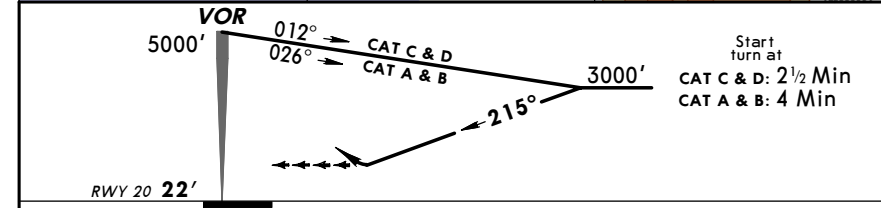
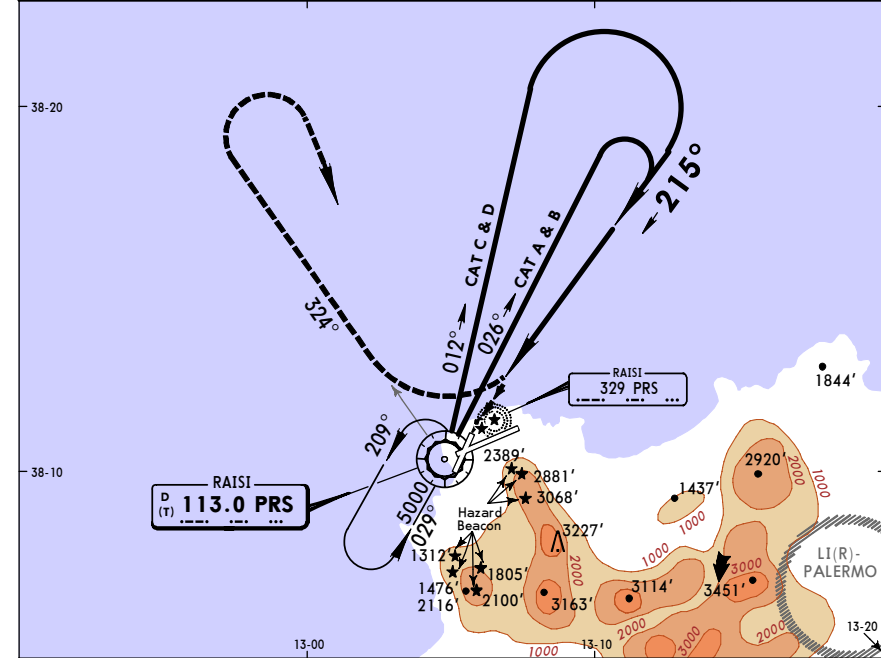
Gnd speed-Kts	70	90	100	120	140	160	HIALS	3000'	PRS
Descent Gradient 5.30% or	376	484	538	645	753	861	REIL	3000'	113.0
Descent angle [3.04°]							PAPI	RT	R-324
MAP at D2.0									

JAR-OPS STRAIGHT-IN LANDING RWY 20		CIRCLE-TO-LAND	
MDA(H) 500' (478')		Not authorized Southeast of airport	
	ALS out	Max Kts	MDA(H) VIS
A	RVR 1400m	100	1000' (935') 1500m
B	RVR 1500m	135	1000' (935') 1600m
C	RVR 1600m	180	1000' (935') 2400m
D	RVR 1800m	205	1000' (935') 3600m

LICJ/PMO PALERMO, ITALY
 PUNTA RAISI VOR Rwy 20

JEPPESEN
 31 AUG 07 (13-4)

ATIS 123.87		PALERMO Approach (R) 120.2		RAISI Tower 119.05	*Ground 121.62
VOR PRS 113.0	Final Apch Crs 215°	Minimum Alt No FAF	MDA(H) 890' (868')	Apt Elev 65' RWY 22'	
MISSED APCH: Not later than VOR turn RIGHT to join and follow R-324 climbing to 5000', then turn RIGHT to VOR.					
Alt Set: hPa	Rwy Elev: 1 hPa	Trans level: By ATC	Trans alt: 5000'	MSA PRS VOR	



HIALS	5000'	PRS
REIL		113.0
PAPI	RT	R-324

JAR-OPS STRAIGHT-IN LANDING RWY 20		CIRCLE-TO-LAND	
MDA(H) 890' (868')		Not authorized Southeast of airport	
	ALS out	Max Kts	MDA(H) VIS
A	RVR 1500m	100	1000' (935') 1500m
B	RVR 1500m	135	1000' (935') 1600m
C	RVR 1800m	180	1000' (935') 2400m
D	RVR 2000m	205	1000' (935') 3600m