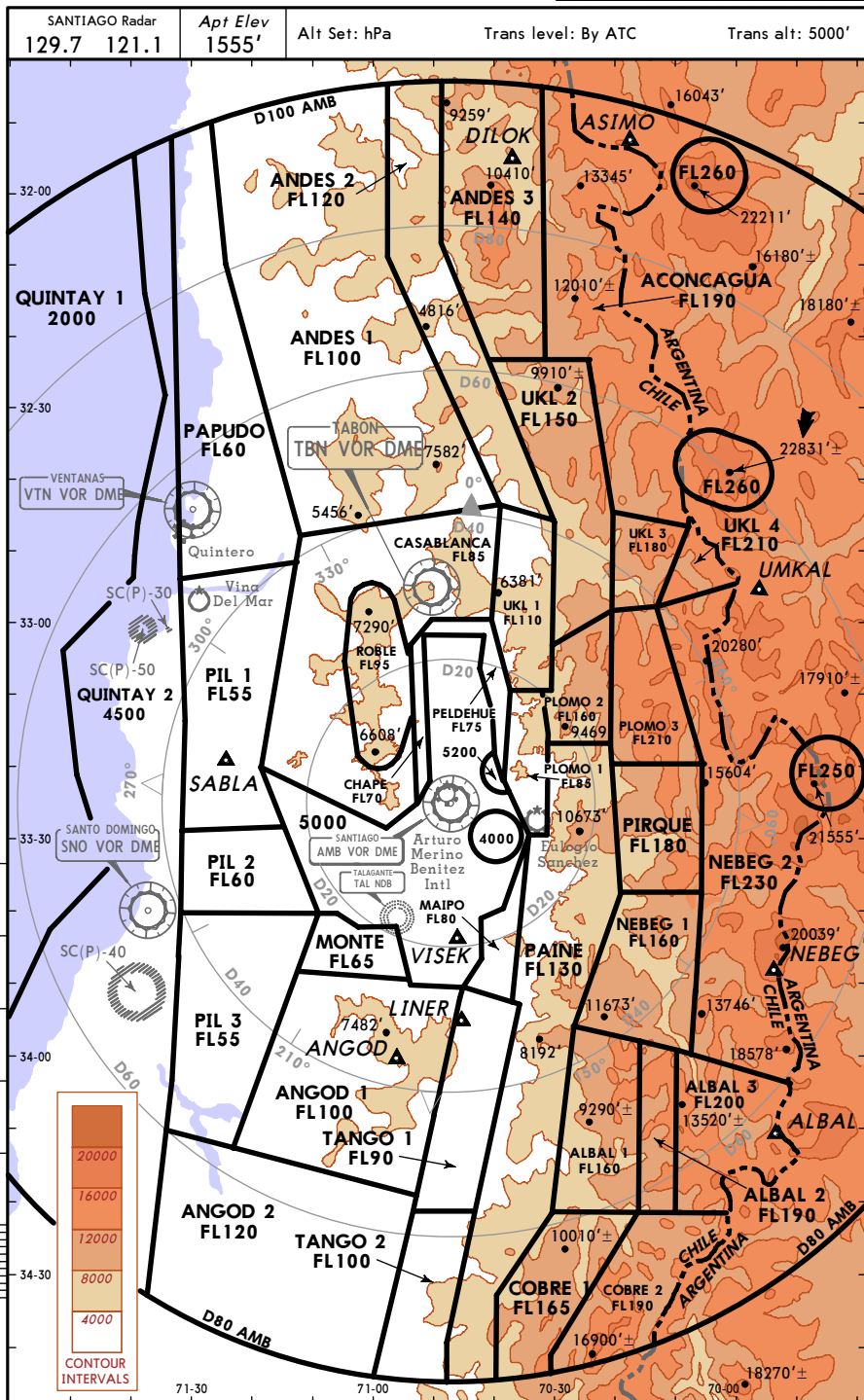
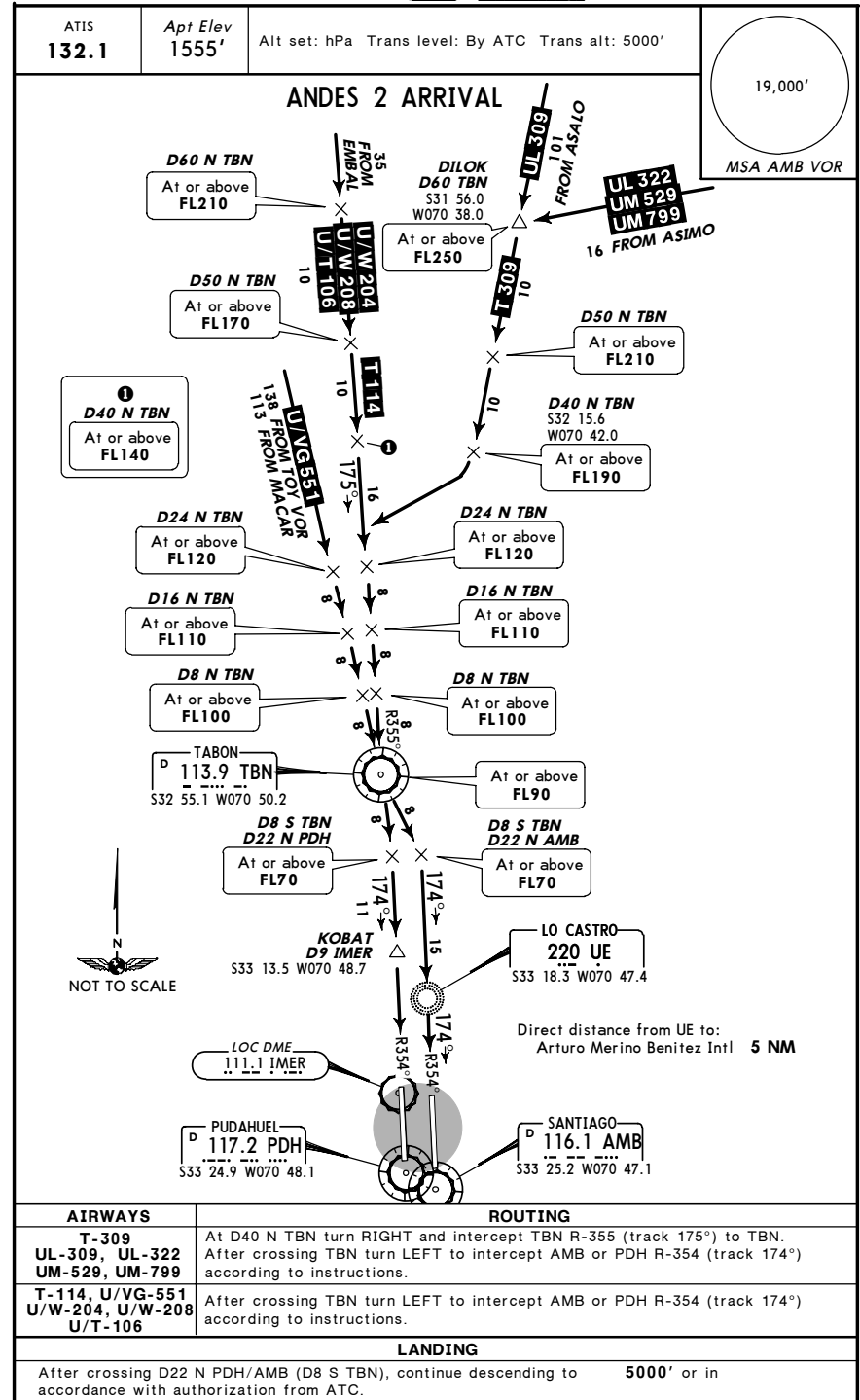


SCEL/SCL **JEPPESEN** **SANTIAGO, CHILE**
 ARTURO MERINO BENITEZ INTL 20 APR 07 (20-1R) **RADAR MINIMUM ALTITUDES**



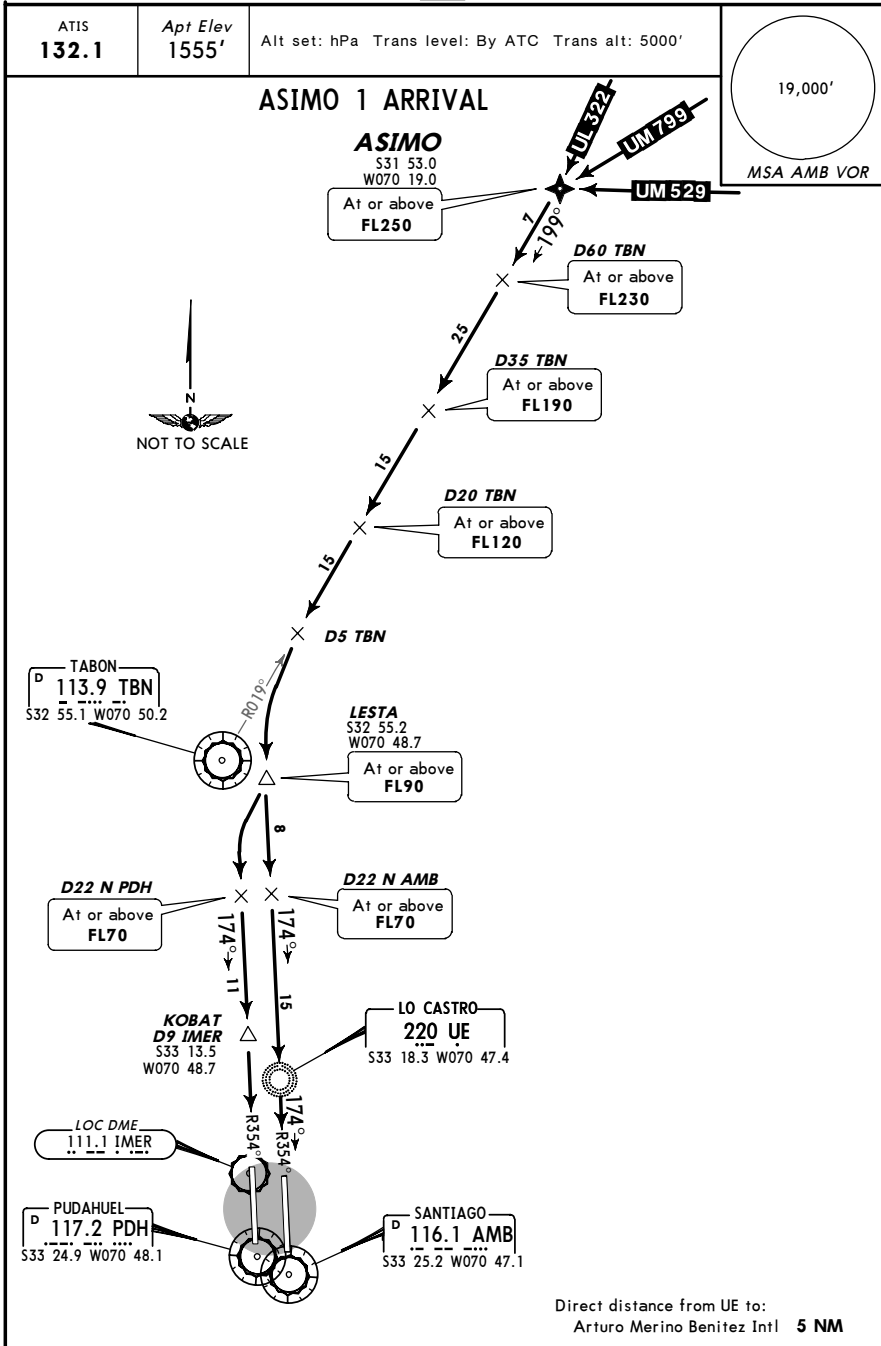
SCEL/SCL **JEPPESEN** **SANTIAGO, CHILE**
 ARTURO MERINO BENITEZ INTL (20-2) 21 SEP 07 Eff 27 Sep **STAR**



SCEL/SCL
 ARTURO MERINO BENITEZ INTL

JEPPESEN
 21 SEP 07
 (20-2A) Eff 27 Sep

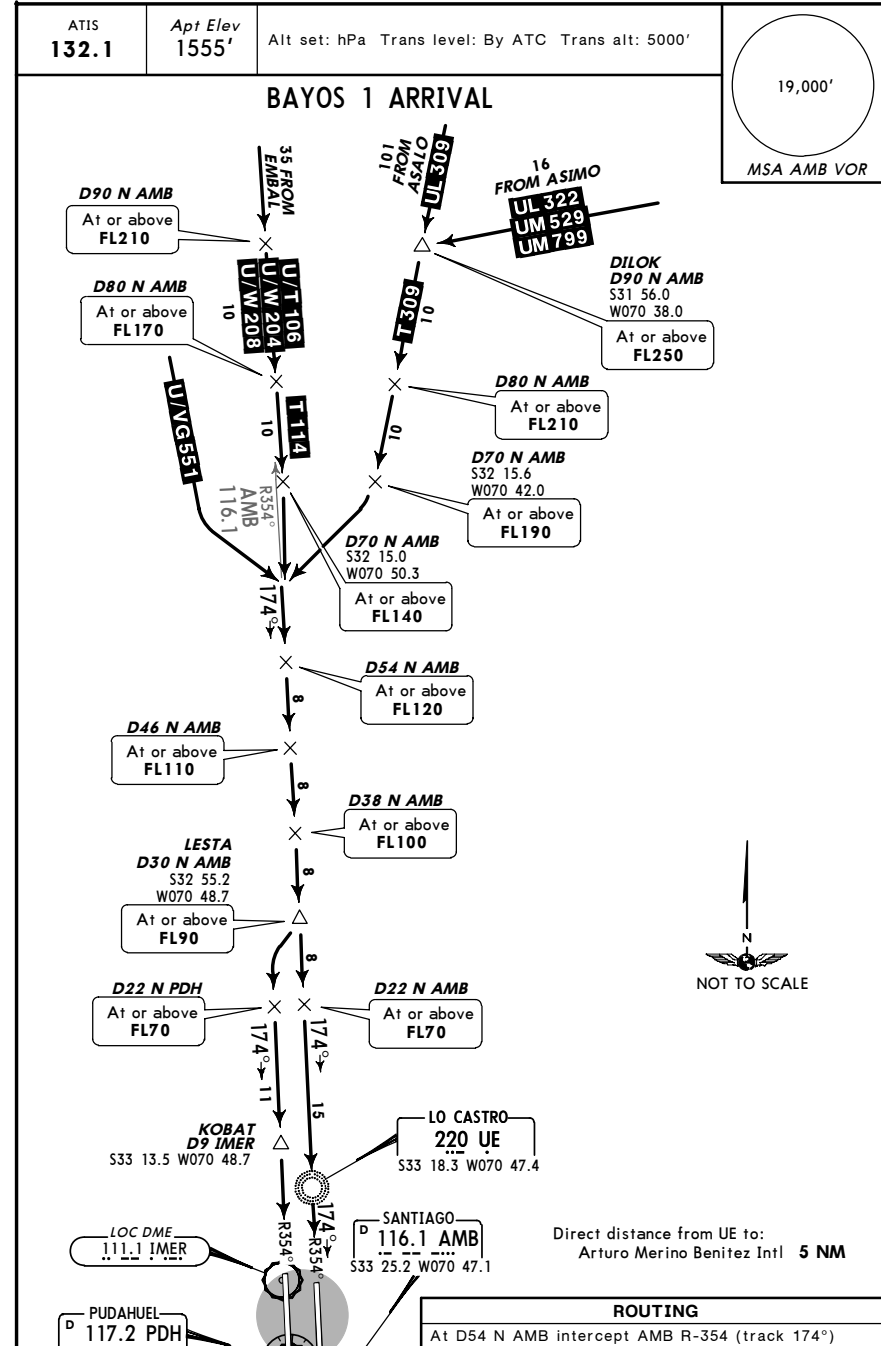
SANTIAGO, CHILE
 STAR



SCEL/SCL
 ARTURO MERINO BENITEZ INTL

JEPPESEN
 21 SEP 07
 (20-2B) Eff 27 Sep

SANTIAGO, CHILE
 STAR

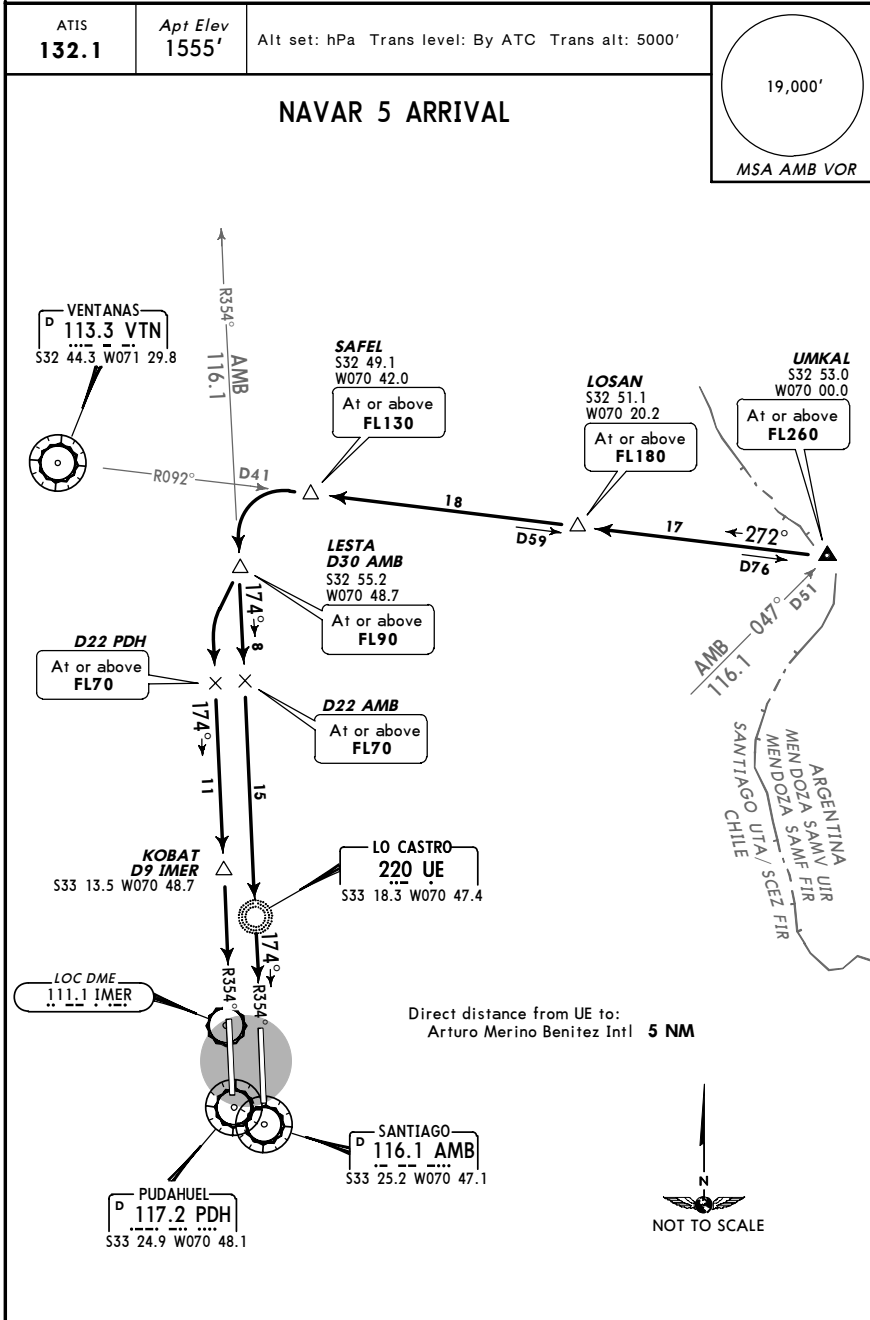


SCHEL/SCL
 ARTURO MERINO BENITEZ INTL

JEPPESEN 21 SEP 07
 (20-2C) Eff 27 Sep

SANTIAGO, CHILE

STAR



ROUTING

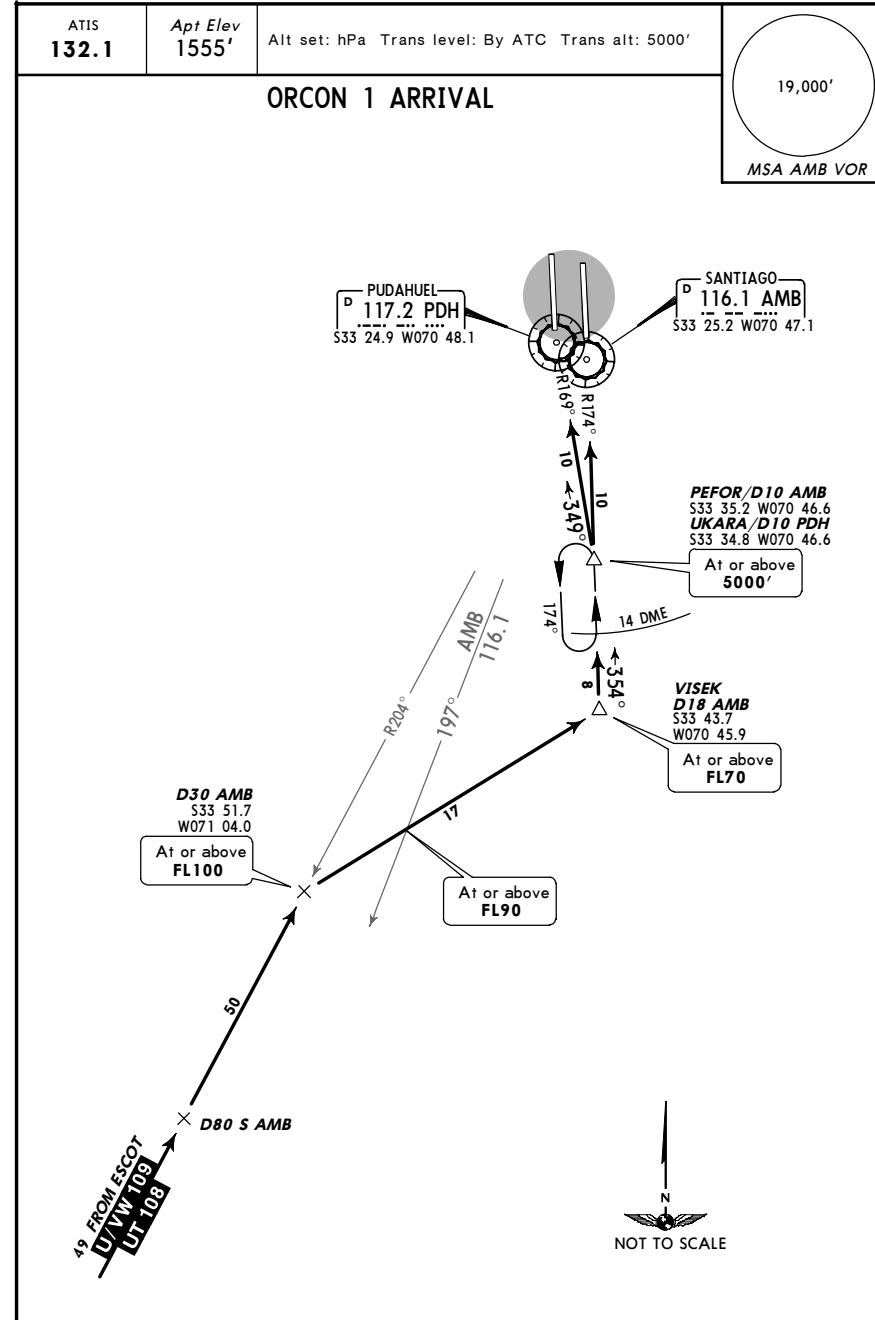
From UMKAL intercept VTN R-092 (track 272°) to SAFEL, then turn LEFT to intercept AMB R-354 (track 174°). Continue via AMB R-354 (track 174°) or intercept PDH R-354 (track 174°) according to instructions. After crossing D22 AMB/PDH, continue descending to 5000' or in accordance with authorization from ATC.

SCHEL/SCL
 ARTURO MERINO BENITEZ INTL

JEPPESEN 29 DEC 06
 (20-2D)

SANTIAGO, CHILE

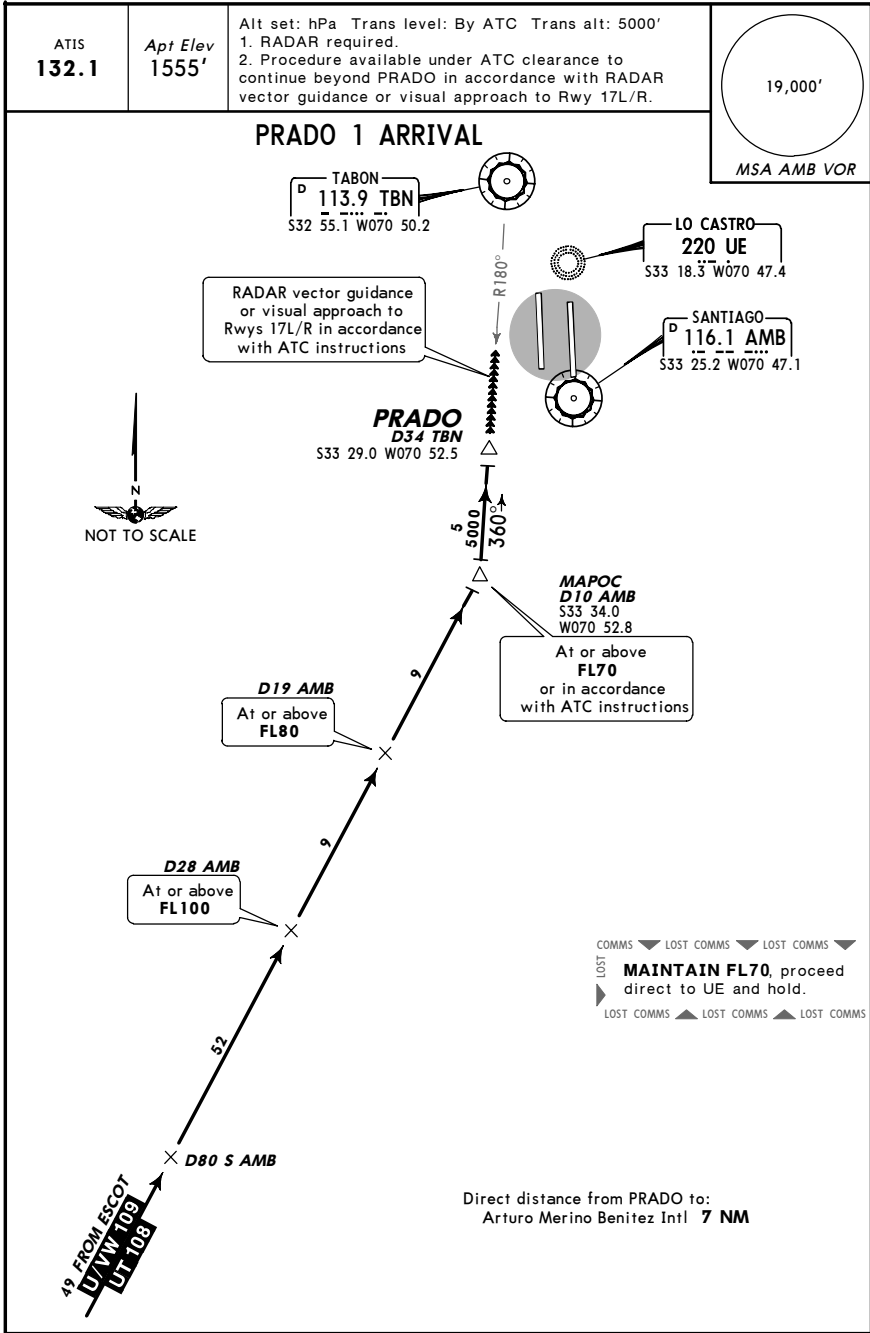
STAR



ROUTING

On airways U/VW-109/UT-108, at D80 S AMB or closer leave the MEA to cross D30 AMB at or above FL100. Turn RIGHT direct to VISEK, direct to PEFOR or UKARA and intercept AMB R-174 (track 354°) or PDH R-169 (track 349°) according to instructions. Continue descending to 5000' or in accordance with authorization from ATC.

SCSEL/SCL **JEPPESEN** **SANTIAGO, CHILE**
 ARTURO MERINO BENITEZ INTL (20-2E) 29 DEC 06 **STAR**

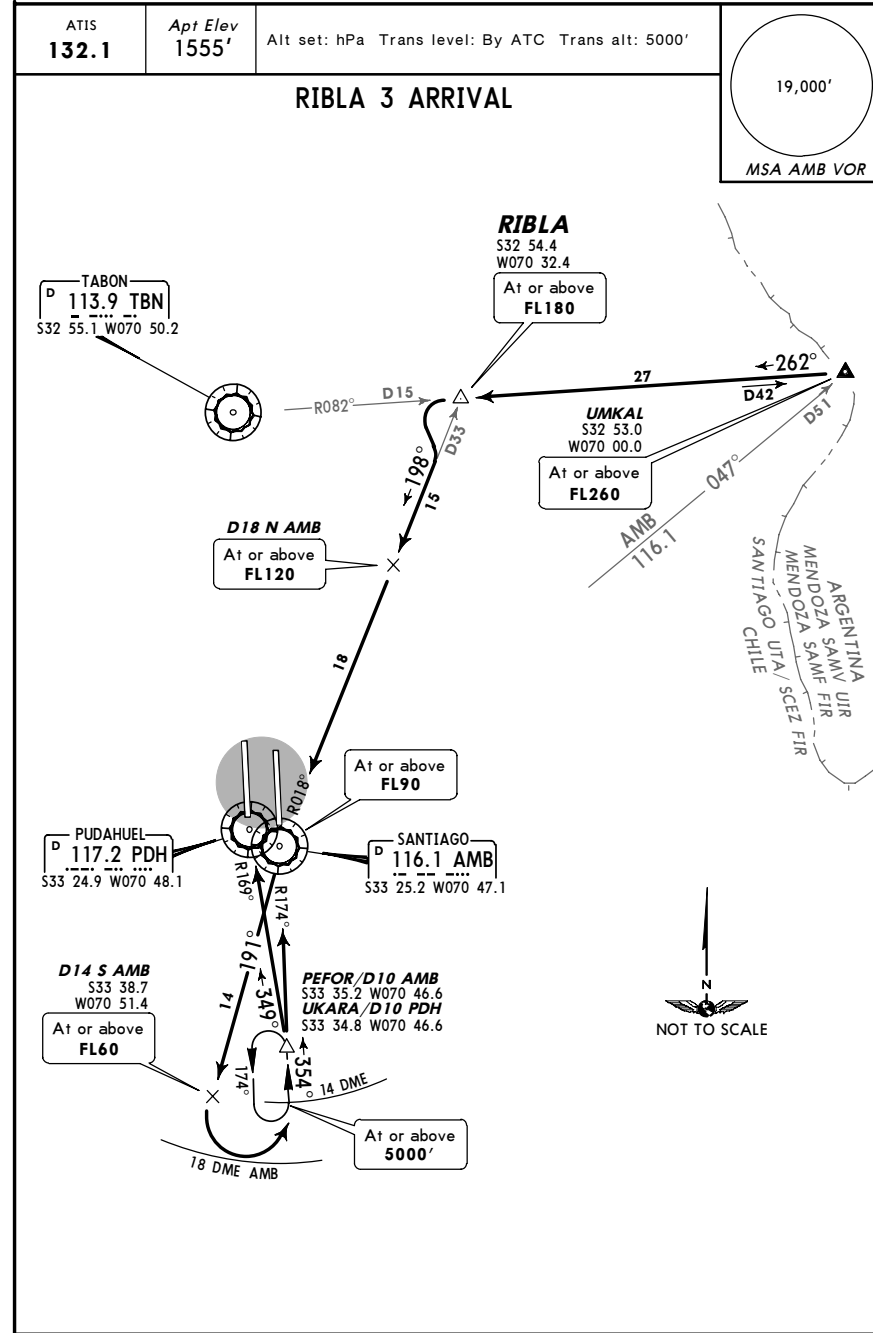


ROUTING

On airways U/VW-109/UT-108, at or before D80 S AMB leave the MEA to cross D28 AMB at or above **FL100**. Intercept TBN R-180 (track 360°) direct to PRADO. From PRADO continue in accordance to RADAR vector guidance or visual approach to Rwy 17L/R in accordance with ATC instructions.

CHANGES: Chart reindexed. © JEPPESEN SANDERSON, INC., 2006. ALL RIGHTS RESERVED.

SCSEL/SCL **JEPPESEN** **SANTIAGO, CHILE**
 ARTURO MERINO BENITEZ INTL (20-2F) 29 DEC 06 **STAR**

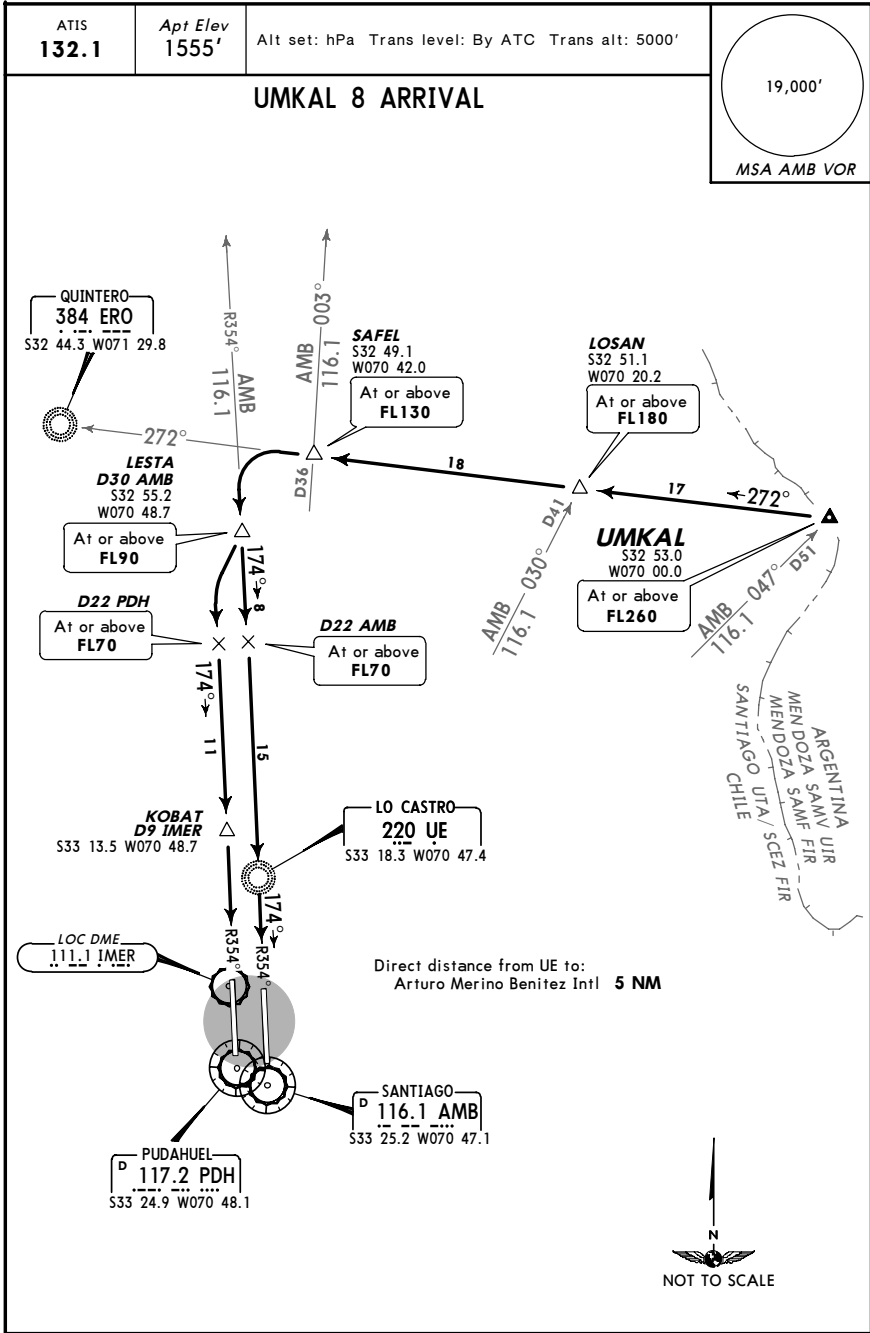


ROUTING

From UMKAL proceed direct to RIBLA, turn LEFT to intercept AMB R-018 (track 198°) direct to AMB, then continue on AMB R-191 to D14 S AMB and turn LEFT within 18 DME of AMB to intercept AMB R-174 (track 354°) or PDH R-169 (track 349°) according to instructions. Continue descending to **5000'** or in accordance with authorization from ATC.

CHANGES: Chart reindexed. © JEPPESEN SANDERSON, INC., 2006. ALL RIGHTS RESERVED.

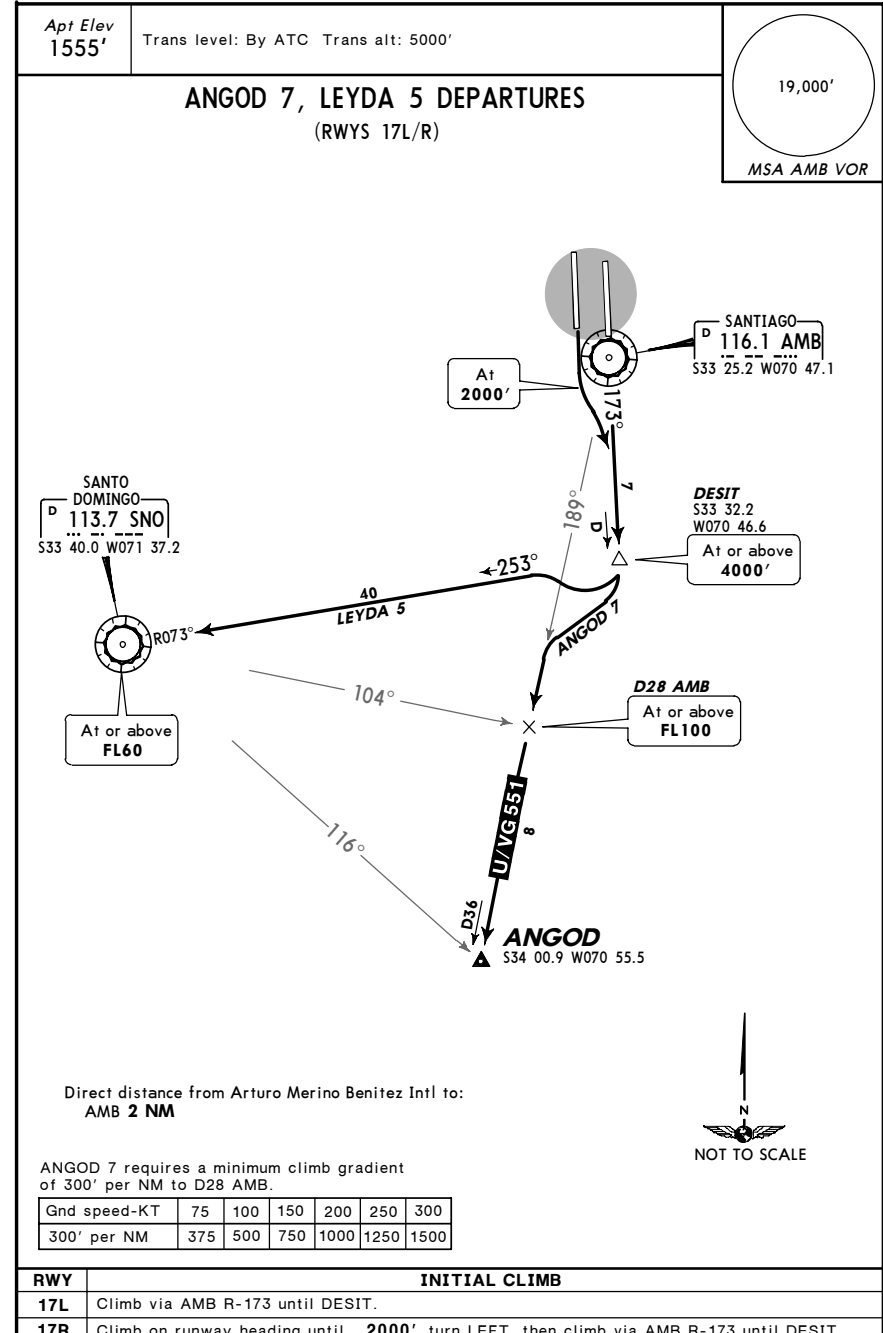
SCHEL/SCL **JEPPESEN** SANTIAGO, CHILE
 ARTURO MERINO BENITEZ INTL (20-2G) 29 DEC 06 **STAR**



ROUTING

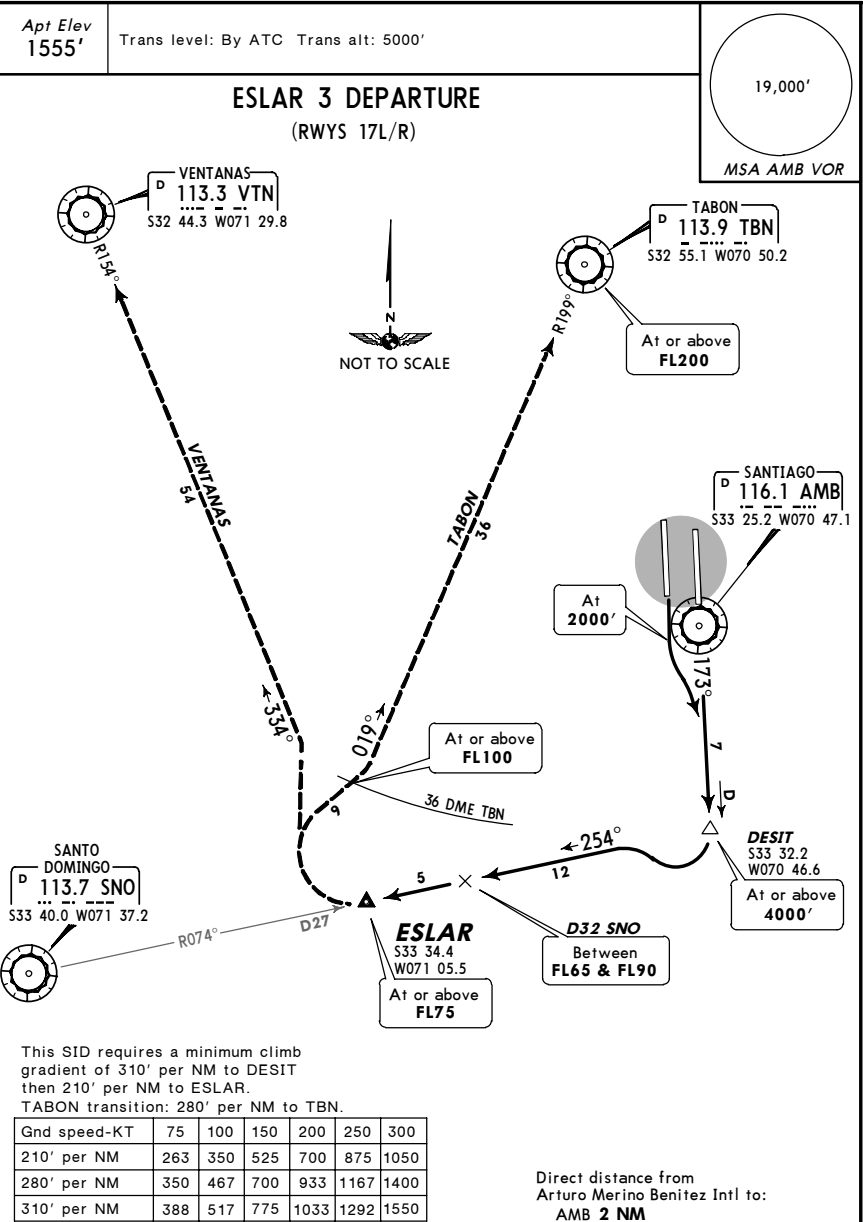
From UMKAL intercept and track the ERO 272° bearing to SAFEL. Turn LEFT to intercept AMB R-354 (track 174°) to LESTA. Continue via AMB R-354 (track 174°) or intercept PDH R-354 (track 174°). After crossing D22 AMB/PDH, continue descending to 5000' or in accordance with authorization from ATC.

SCHEL/SCL **JEPPESEN** SANTIAGO, CHILE
 ARTURO MERINO BENITEZ INTL (20-3) 30 JUN 06 **SID**



RWY	INITIAL CLIMB
17L	Climb via AMB R-173 until DESIT.
17R	Climb on runway heading until 2000', turn LEFT, then climb via AMB R-173 until DESIT.
SID	ROUTING
ANGOD 7	Turn RIGHT to intercept airway. Continue in accordance with authorization from ATC.
LEYDA 5	Turn RIGHT to intercept SNO R-073 (track 253°) to SNO. Continue in accordance with authorization from ATC.

SCEL/SCL **JEPPESEN** **SANTIAGO, CHILE**
 ARTURO MERINO BENITEZ INTL (20-3A) 30 JUN 06 **SID**



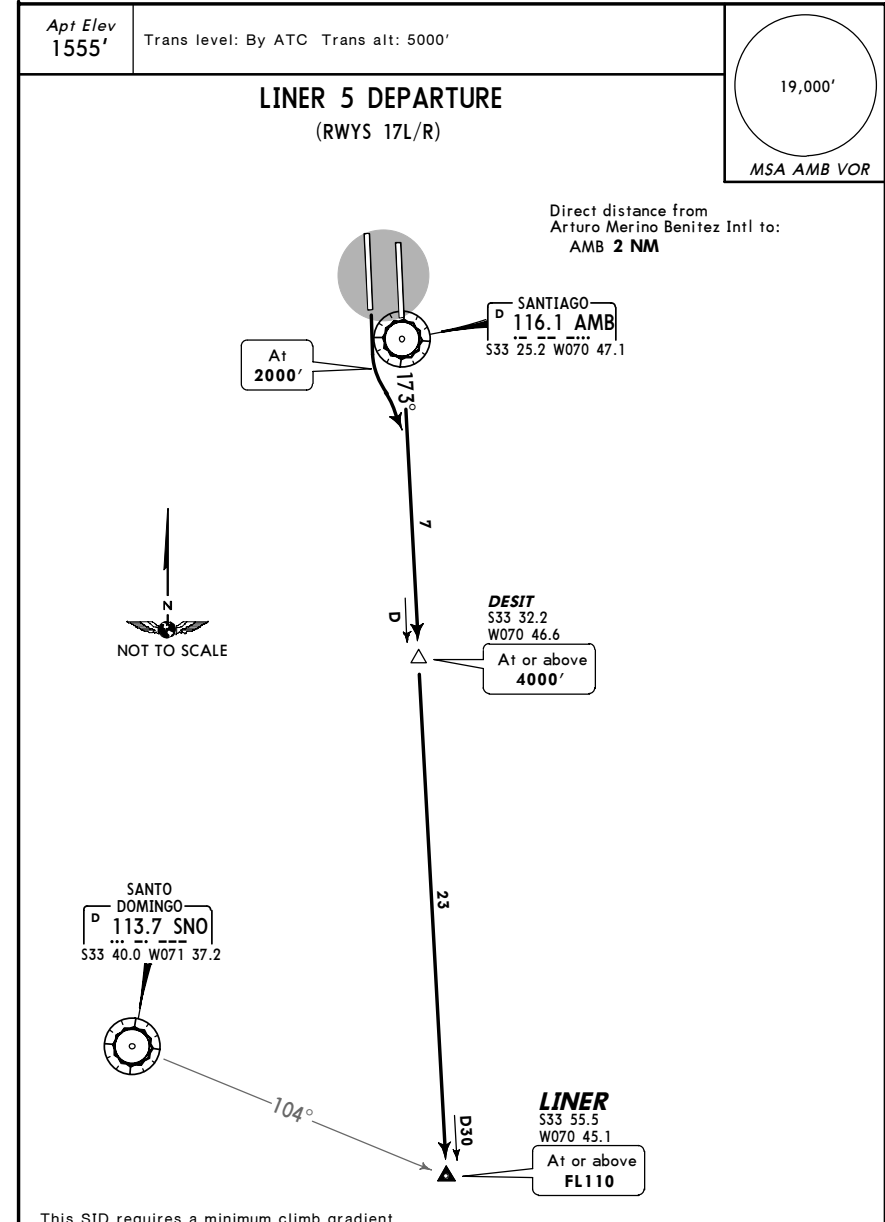
This SID requires a minimum climb gradient of 310' per NM to DESIT then 210' per NM to ESLAR.
 TABON transition: 280' per NM to TBN.

Gnd speed-KT	75	100	150	200	250	300
210' per NM	263	350	525	700	875	1050
280' per NM	350	467	700	933	1167	1400
310' per NM	388	517	775	1033	1292	1550

RWY	INITIAL CLIMB
17L	Climb via AMB R-173 until DESIT.
17R	Climb on runway heading until 2000', turn LEFT, then climb via AMB R-173 until DESIT.
ROUTING	
Turn RIGHT to intercept SNO R-074 (track 254°) to ESLAR.	
TRANSITIONS	
TABON	After ESLAR turn RIGHT to intercept TBN R-199 (track 019°) direct to TBN.
VENTANAS	After ESLAR turn RIGHT to intercept VTN R-154 (track 334°) direct to VTN.

CHANGES: Climb gradients, crossing restriction, procedure note. © JEPPESEN SANDERSON, INC., 2003, 2006. ALL RIGHTS RESERVED.

SCEL/SCL **JEPPESEN** **SANTIAGO, CHILE**
 ARTURO MERINO BENITEZ INTL (20-3B) 16 NOV 07 **SID**



This SID requires a minimum climb gradient of 300' per NM to D30 AMB.

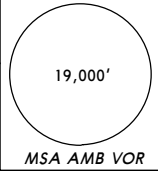
Gnd speed-KT	75	100	150	200	250	300
300' per NM	375	500	750	1000	1250	1500

RWY	INITIAL CLIMB
17L	Climb via AMB R-173 until LINER.
17R	Climb on runway heading until 2000', turn LEFT, then climb via AMB R-173 until LINER.
ROUTING	
Continue in accordance with authorization from ATC.	

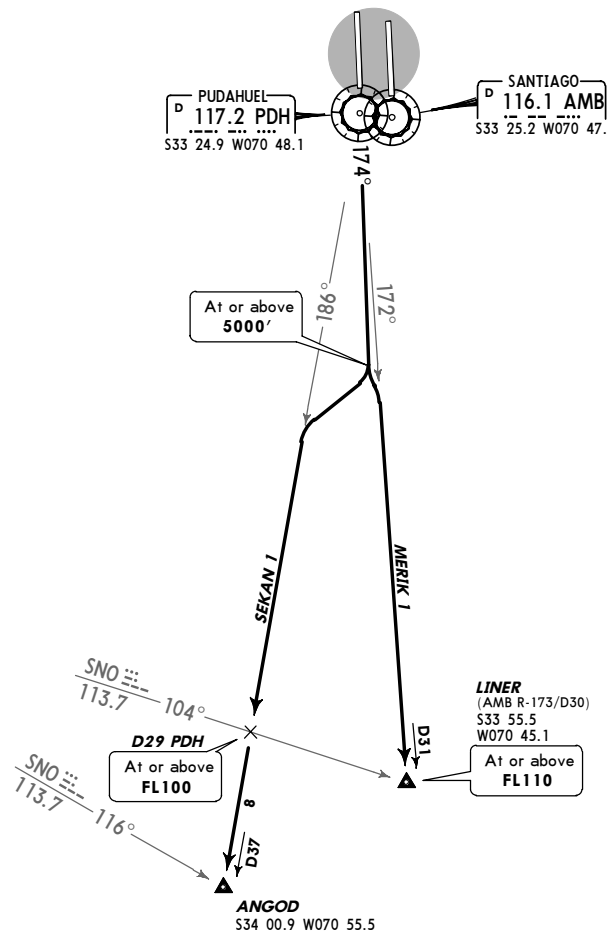
CHANGES: None. © JEPPESEN SANDERSON, INC., 2003, 2007. ALL RIGHTS RESERVED.

SCEL/SCL **JEPPESEN** **SANTIAGO, CHILE**
 ARTURO MERINO BENITEZ INTL (20-3C) 16 NOV 07 **SID**

Apt Elev 1555' Trans level: By ATC Trans alt: 5000'



MERIK 1, SEKAN 1 DEPARTURES
 (RWY 17R)



These SIDs require minimum climb gradients of:
 MERIK 1: 300' per NM to LINER.
 SEKAN 1: 300' per NM to D29 PDH.

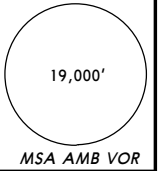
Gnd speed-KT	75	100	150	200	250	300
300' per NM	375	500	750	1000	1250	1500



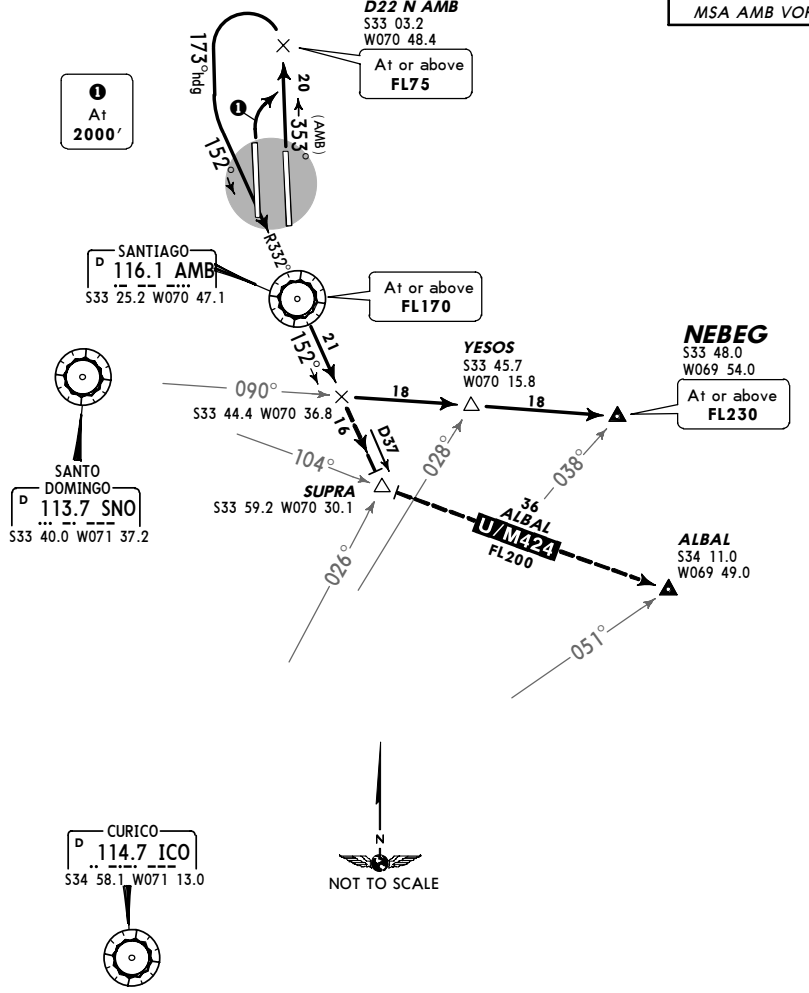
INITIAL CLIMB	
Climb on PDH R-174 to 5000'.	
ROUTING	
MERIK 1	Turn LEFT to intercept PDH R-172 direct to LINER, then in accordance with ATC instructions.
SEKAN 1	Turn RIGHT to intercept PDH R-186 direct to ANGOD, then in accordance with ATC instructions.

SCEL/SCL **JEPPESEN** **SANTIAGO, CHILE**
 ARTURO MERINO BENITEZ INTL (20-3D) 16 NOV 07 **SID**

Apt Elev 1555' Trans level: By ATC Trans alt: 5000'



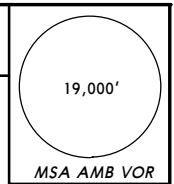
NEBEG 6 DEPARTURE
 (RWYS 35L/R)



INITIAL CLIMB	
35L	Climb on runway heading until 2000', turn RIGHT, then climb via AMB R-353 until D22 N AMB.
35R	Climb via AMB R-353 until D22 N AMB.
ROUTING	
Turn LEFT to a 173° heading to intercept AMB R-332 (track 152°) direct to AMB. Continue on AMB R-152 until intercepting SNO R-090, then direct to NEBEG.	
TRANSITION	
ALBAL	Continue on AMB R-152 to intercept SNO R-104 direct to ALBAL.

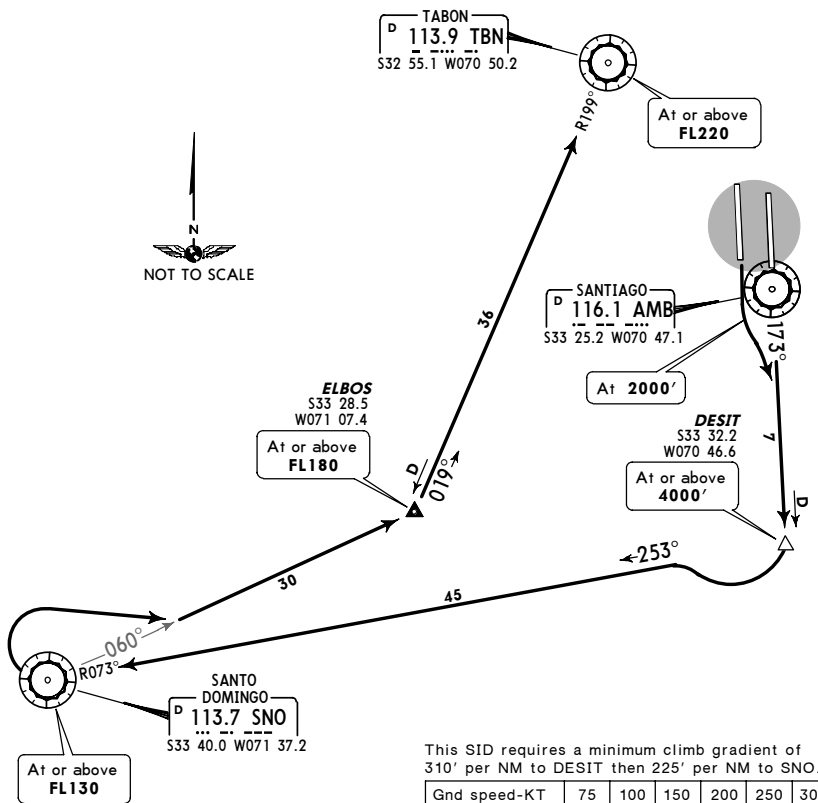
SCSEL/SCL **JEPPESEN** **SANTIAGO, CHILE**
 ARTURO MERINO BENITEZ INTL (20-3E) 16 NOV 07 **SID**

Apt Elev 1555' Trans level: By ATC Trans alt: 5000'



SANEL 2 DEPARTURE
 (RWYS 17L/R)

Direct distance from Arturo Merino Benitez Intl to:
 AMB 2 NM



This SID requires a minimum climb gradient of 310' per NM to DESIT then 225' per NM to SNO.

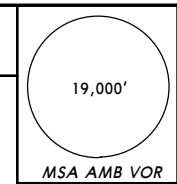
Gnd speed-KT	75	100	150	200	250	300
225' per NM	281	375	563	750	938	1125
310' per NM	388	517	775	1033	1292	1550

RWY	INITIAL CLIMB
17L	Climb via AMB R-173 to DESIT.
17R	Climb on runway heading until 2000', turn LEFT, then climb via AMB R-173 until DESIT.

ROUTING
 Turn RIGHT to intercept SNO R-073 (track 253°) direct SNO, then turn RIGHT to intercept SNO R-060 to ELBOS (TBN R-199/D36), then LEFT turn direct to TBN.

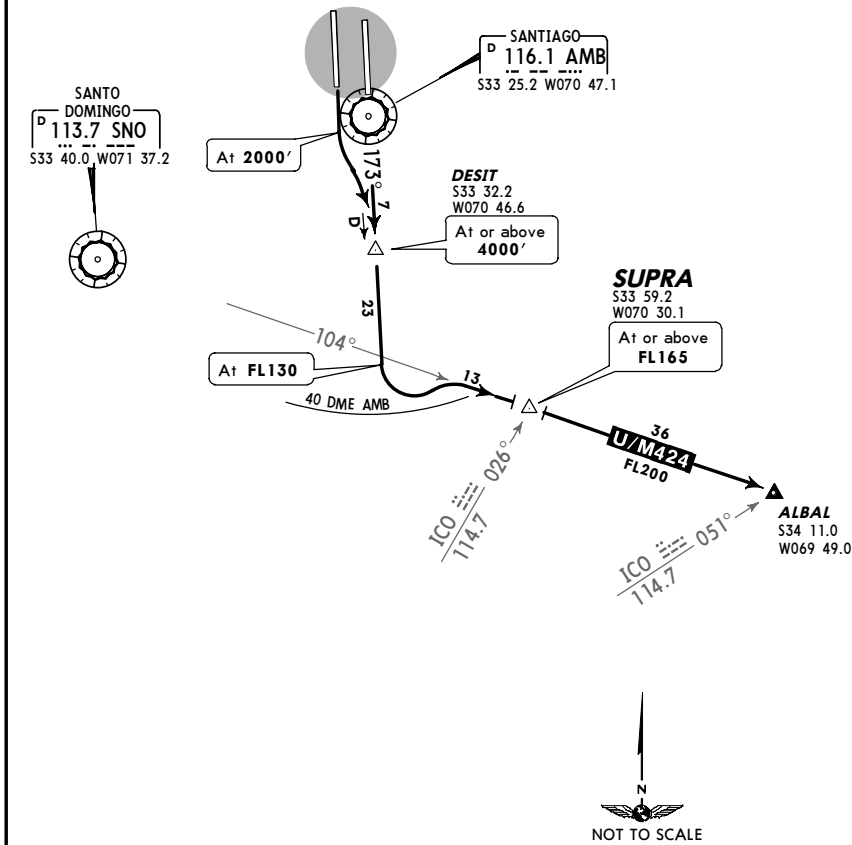
SCSEL/SCL **JEPPESEN** **SANTIAGO, CHILE**
 ARTURO MERINO BENITEZ INTL (20-3F) 16 NOV 07 **SID**

Apt Elev 1555' Trans level: By ATC Trans alt: 5000'



SUPRA 7 DEPARTURE
 (RWYS 17L/R)

Direct distance from Arturo Merino Benitez Intl to:
 AMB 2 NM



This SID requires a minimum climb gradient of 350' per NM to SUPRA.

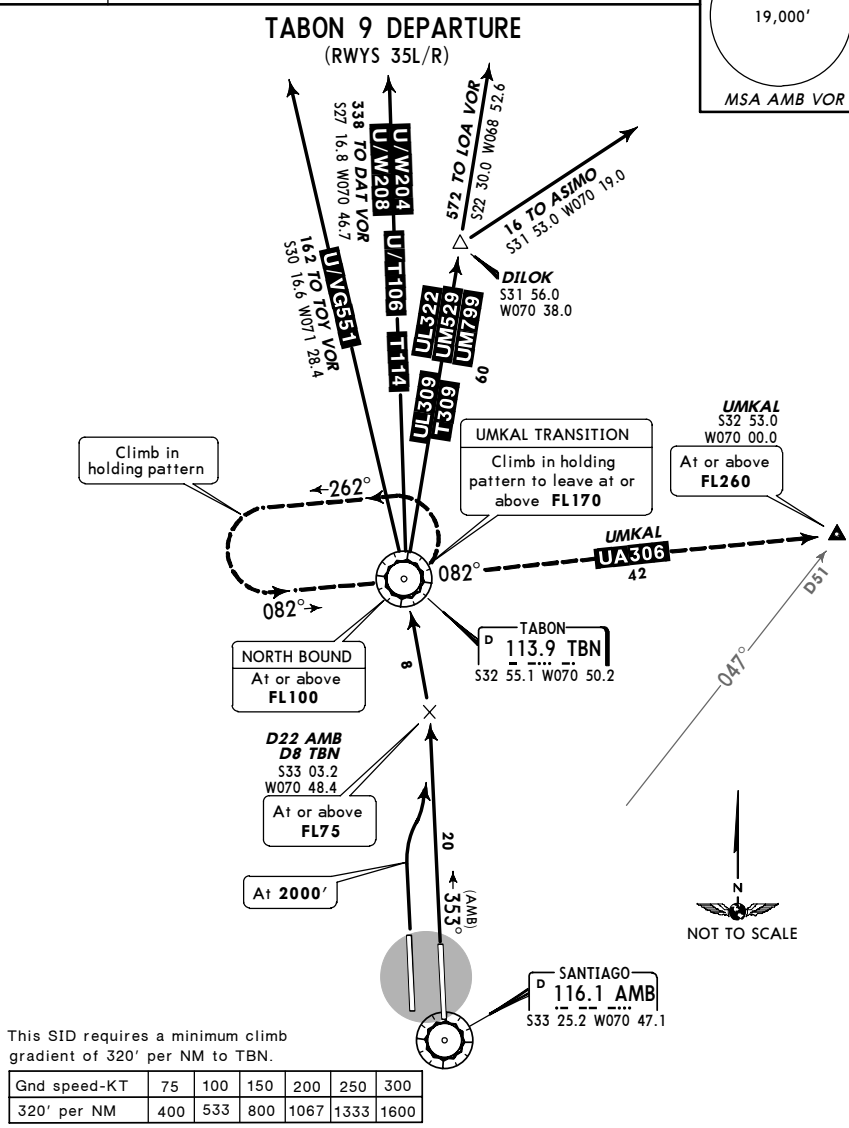
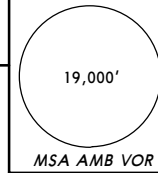
Gnd speed-KT	75	100	150	200	250	300
350' per NM	438	583	875	1167	1458	1750

RWY	INITIAL CLIMB
17L	Climb via AMB R-173 until FL130.
17R	Climb on runway heading until 2000', turn LEFT, climb via AMB R-173 until FL130.

ROUTING
 Turn LEFT within 40 NM of AMB direct to SUPRA to intercept airway, then in accordance with authorization from ATC.

SCEL/SCL **JEPPESEN** **SANTIAGO, CHILE**
 ARTURO MERINO BENITEZ INTL **(20-3G)** 16 NOV 07 **SID**

Apt Elev 1555' Trans level: By ATC Trans alt: 5000'



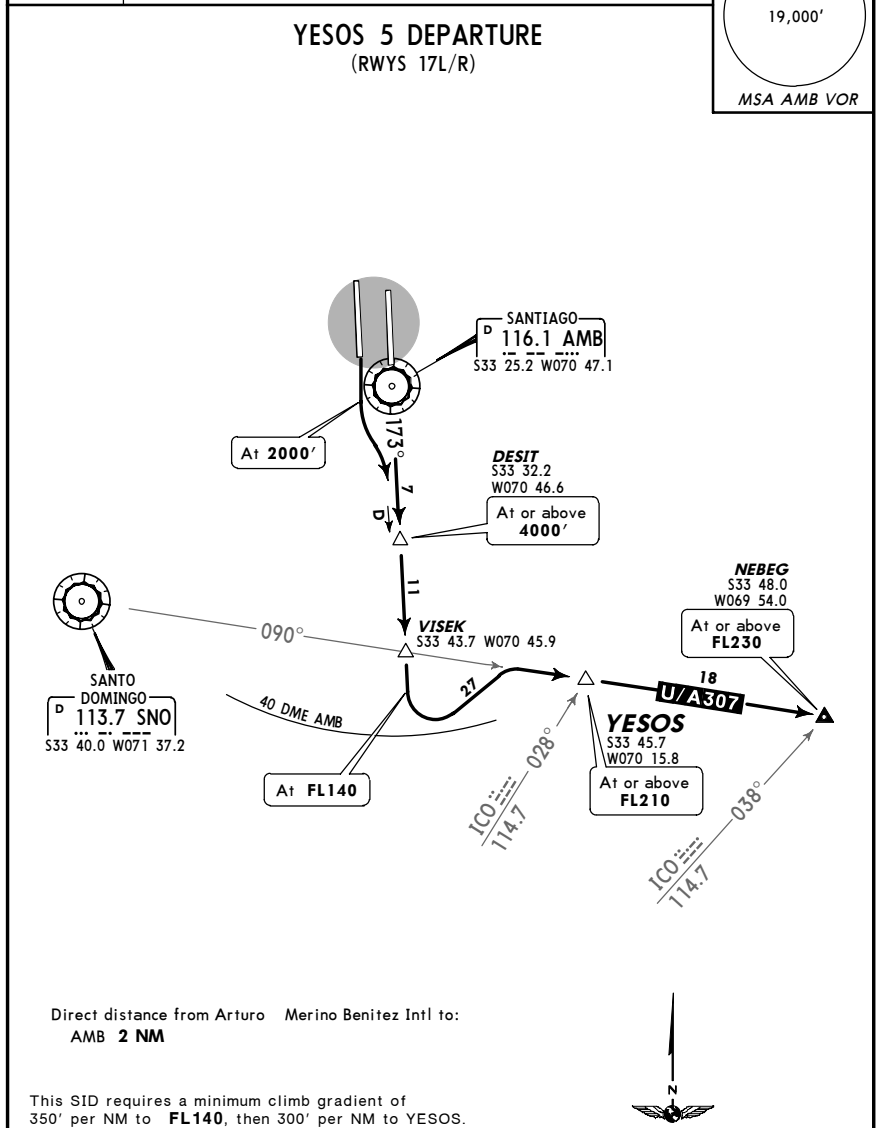
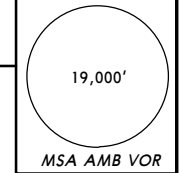
This SID requires a minimum climb gradient of 320' per NM to TBN.

Gnd speed-KT	75	100	150	200	250	300
320' per NM	400	533	800	1067	1333	1600

RWY	INITIAL CLIMB
35L	Climb on runway heading until 2000', turn RIGHT, then climb via AMB R-353 until D22 AMB.
35R	Climb via AMB R-353 until D22 AMB.
ROUTING	
Continue direct to TBN, then in accordance with authorization from ATC.	
TRANSITION	
UMKAL	Over TBN turn LEFT, climb in the holding pattern WEST of TBN, LEFT turns, to leave TBN at or above FL170. Proceed to UMKAL, then continue in accordance with authorization from ATC.

SCEL/SCL **JEPPESEN** **SANTIAGO, CHILE**
 ARTURO MERINO BENITEZ INTL **(20-3H)** 16 NOV 07 **SID**

Apt Elev 1555' Trans level: By ATC Trans alt: 5000'



Direct distance from Arturo Merino Benitez Intl to AMB 2 NM

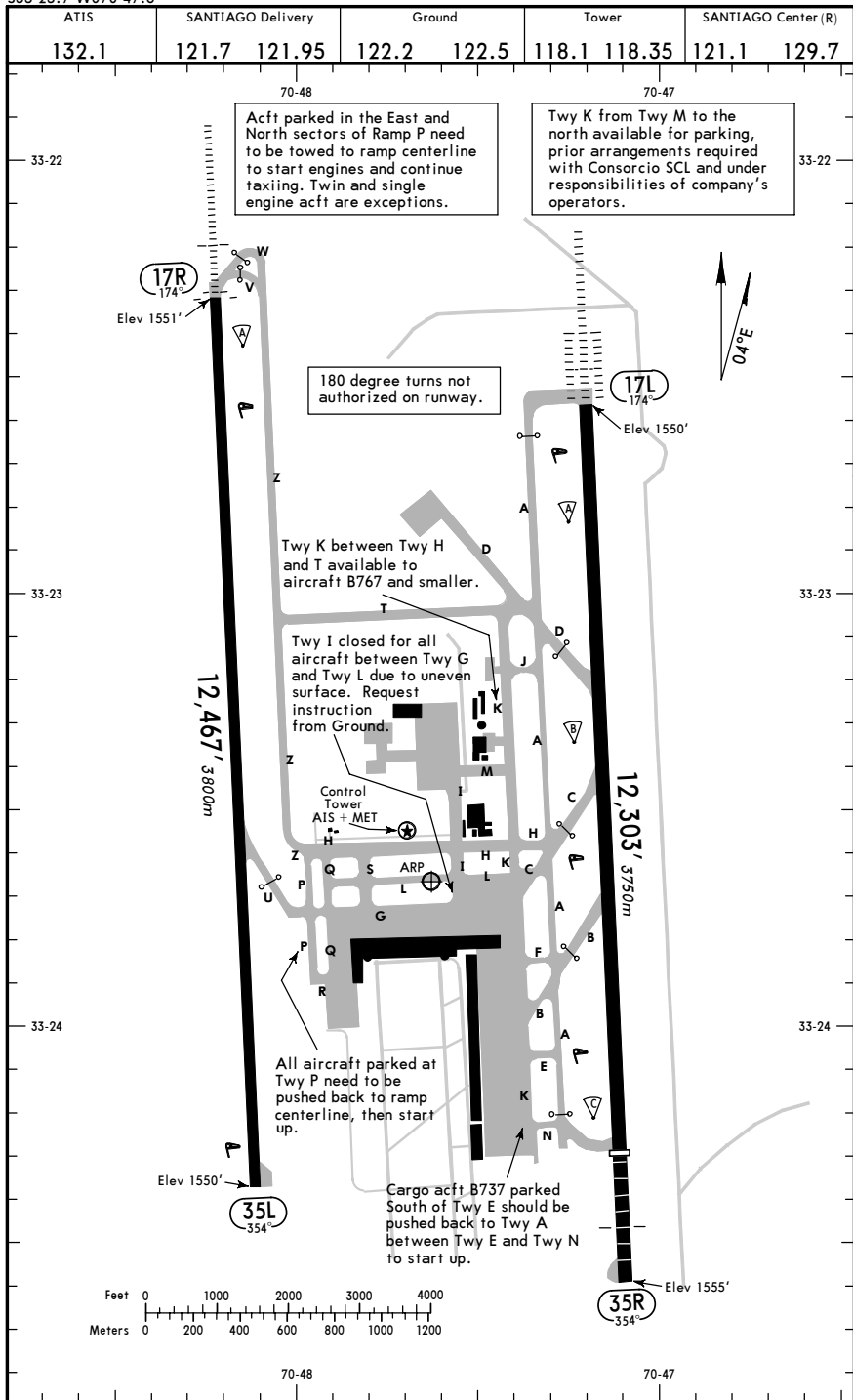
This SID requires a minimum climb gradient of 350' per NM to FL140, then 300' per NM to YESOS.

Gnd speed-KT	75	100	150	200	250	300
300' per NM	375	500	750	1000	1250	1500
350' per NM	438	583	875	1167	1458	1750

RWY	INITIAL CLIMB
17L	Climb via AMB R-173 until FL140.
17R	Climb on runway heading until 2000', turn LEFT, then climb via AMB R-173 until FL140.
ROUTING	
Turn LEFT within 40 NM of AMB direct to YESOS, then NEBEG. Continue in accordance with authorization from ATC.	

SCEL/SCL **JEPPESEN** **SANTIAGO, CHILE**

Apt Elev 1555' 21 SEP 07 (20-9) Eff 27 Sep ARTURO MERINO BENITEZ INTL

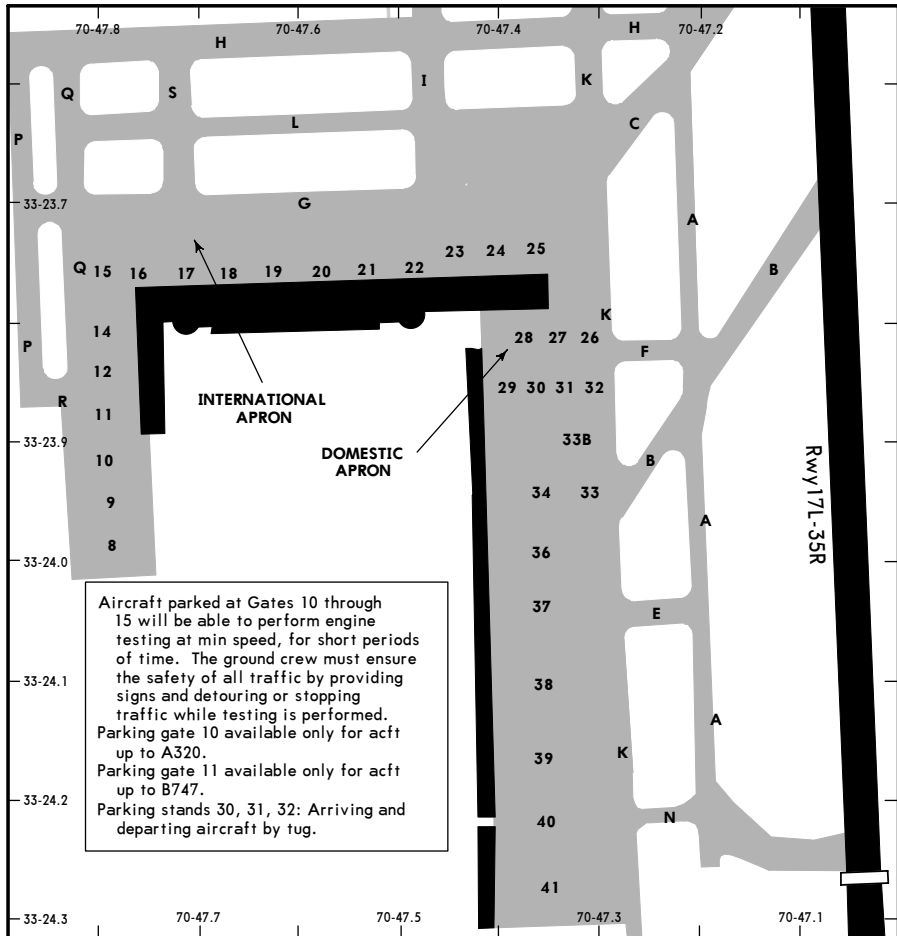


SCEL/SCL **JEPPESEN** **SANTIAGO, CHILE**

21 SEP 07 (20-9A) Eff 27 Sep ARTURO MERINO BENITEZ INTL

GENERAL								
Birds in vicinity of airport. Two way radio communications with tower is required.								
ADDITIONAL RUNWAY INFORMATION								
RWY	LANDING BEYOND					TAKE-OFF	WIDTH	
	Threshold	USABLE LENGTHS		GLIDE SLOPE				
17L	HIRL CL	ALSF-2	TDZ	REIL	PAPI-L (angle 3.0°)	RVR	11,258' 3431m	180'
35R	HIRL CL	SSALS	REIL	PAPI-L (angle 3.0°)	RVR	10,499' 3200m		55m
17R	HIRL CL	ALSF-1	REIL	PAPI-L (angle 3.0°)	RVR			148'
35L	HIRL CL	REIL	PAPI-L (angle 3.0°)	RVR				45m
TAKE-OFF								
1 Rwy35R		1 Rwy17L & 35R		All Rwys				
Take-Off Alternate Apt. Filed						Take-Off Alternate Apt. not Filed		
CL & RCLM		HIRL & CL or RCLM		RL or CL or RCLM		STD		
1 Eng	1.6 km or Higher Available Landing Minimums							
2 Eng	1 hr alternate (1 Eng inop)			0.4 km	0.8 km	1.6 km		
	3 RVRs operating or 2 RVRs after take-off run is initiated.							
3 & 4 Eng	2 hr alternate (1 Eng inop)			0.4 km	0.8 km	Available Landing Minimums		
	Take-off with front course ILS							
Take-off with front course ILS		RVR 175m						
RVR 100m		RVR 175m						
1 Foreign Non-scheduled Air Carriers are not authorized to depart using 100m or 175m minimums.								
FOR FILING AS ALTERNATE								
Precision				Non-Precision				
A	600' - 3.2 km			800' - 3.2 km				
B								
C								
D								

SCEL/SCL **JEPPESEN** **SANTIAGO, CHILE**
 21 SEP 07 (20-9B) Eff 27 Sep ARTURO MERINO BENITEZ INTL



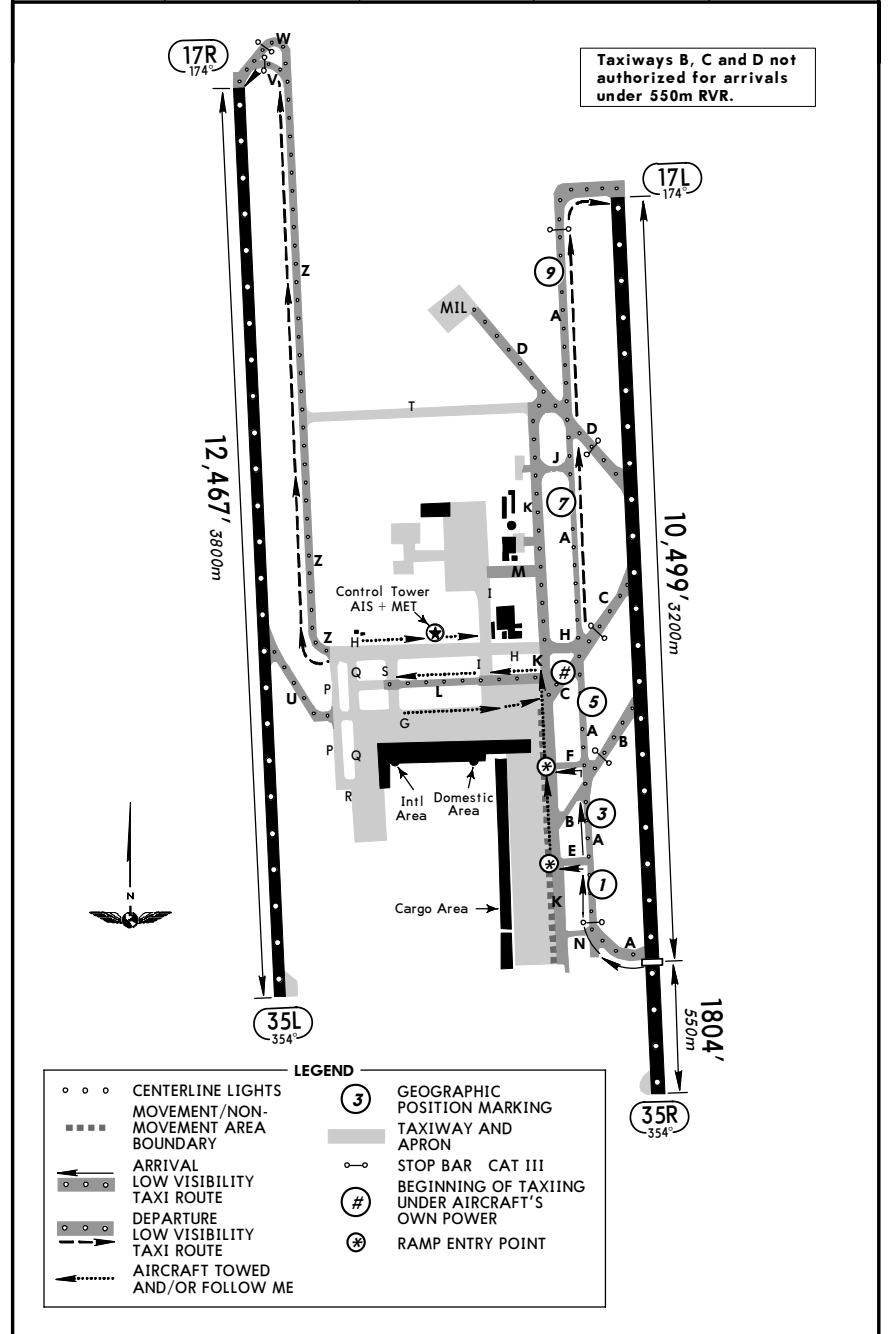
Aircraft parked at Gates 10 through 15 will be able to perform engine testing at min speed, for short periods of time. The ground crew must ensure the safety of all traffic by providing signs and detouring or stopping traffic while testing is performed. Parking gate 10 available only for acft up to A320. Parking gate 11 available only for acft up to B747. Parking stands 30, 31, 32: Arriving and departing aircraft by tug.

PARKING SPOT COORDINATES

SPOT No.	COORDINATES	SPOT No.	COORDINATES
INTERNATIONAL AND DOMESTIC APRON			
8, 9	S33 24.0 W070 47.8	26, 27, 28	S33 23.8 W070 47.4
10, 11	S33 23.9 W070 47.8	29 thru 33	S33 23.9 W070 47.4
12, 14, 15, 16	S33 23.8 W070 47.8	33B, 34	S33 23.9 W070 47.4
17, 18	S33 23.8 W070 47.7	36	S33 24.0 W070 47.4
19, 20	S33 23.8 W070 47.6	37, 38	S33 24.1 W070 47.4
21, 22	S33 23.8 W070 47.5	39	S33 24.2 W070 47.4
23, 24, 25	S33 23.7 W070 47.4	40, 41	S33 24.3 W070 47.4

SCEL/SCL **JEPPESEN** **SMGCS**
 ARTURO MERINO BENITEZ INTL 21 SEP 07 (20-9C) Eff 27 Sep SANTIAGO, CHILE
Less than RVR 550m **LOW VISIBILITY TAXI ROUTES**

ATIS	SANTIAGO Delivery	Ground	Tower	SANTIAGO Center(R)
132.1	121.7 121.95	122.2 122.5	118.1 118.35	121.1 129.7



Taxiways B, C and D not authorized for arrivals under 550m RVR.

LEGEND

- ○ ○ CENTERLINE LIGHTS
- MOVEMENT/NON-MOVEMENT AREA BOUNDARY
- ← ARRIVAL LOW VISIBILITY TAXI ROUTE
- DEPARTURE LOW VISIBILITY TAXI ROUTE
- ←..... AIRCRAFT TOWED AND/OR FOLLOW ME
- ③ GEOGRAPHIC POSITION MARKING
- TAXIWAY AND APRON
- STOP BAR CAT III
- # BEGINNING OF TAXIING UNDER AIRCRAFT'S OWN POWER
- ⊕ RAMP ENTRY POINT

SCEL/SCL **JEPPESEN** SANTIAGO, CHILE
 ARTURO MERINO BENITEZ INTL

26 AUG 05
 Eff 1 Sep

20-9D

**ATC PROCEDURES FOR TAXIING WITH
 REDUCED VISIBILITY (LVP)**

ILS CAT II / IIIA OPERATIONS - ARTURO MERINO BENITEZ INTL

(Special aircraft and aircrew certification required)

Taxiing Procedure With Reduced Visibility (LVP)

Pilots should not request authorization to start up or tow when the visibility is less than 100m RVR.

When the RVR is less than 500m, the visibility will be reported by Ground Control on 122.2 Mhz. The departing sequence with reduced visibility will be determined by ATC, in accordance with the following priorities:

- Regular scheduled passenger aircraft;
- Non-scheduled passenger aircraft;
- Scheduled cargo aircraft;
- Other aircraft.

ILS Sensitive Area (LSA)

The maneuvering area has the following aids:

- Twy center line axis, yellow;
- Marked holding points;
- Special holding points marked, related to the sensitive ILS area CAT II & III AB;
- Twy center line lights, green;
- Stopping bars, red;
- Signs showing the Twy identifiers.

Aircraft arriving will notify 'Runway Clear' when all taxiway center lights are green.

Taxiing

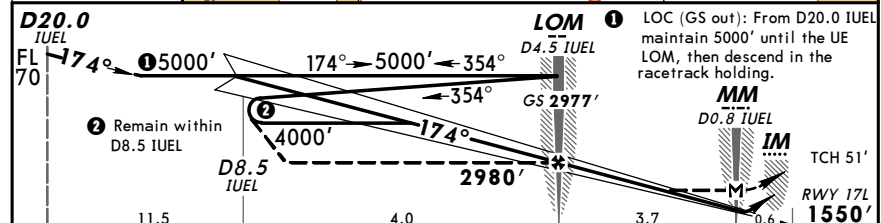
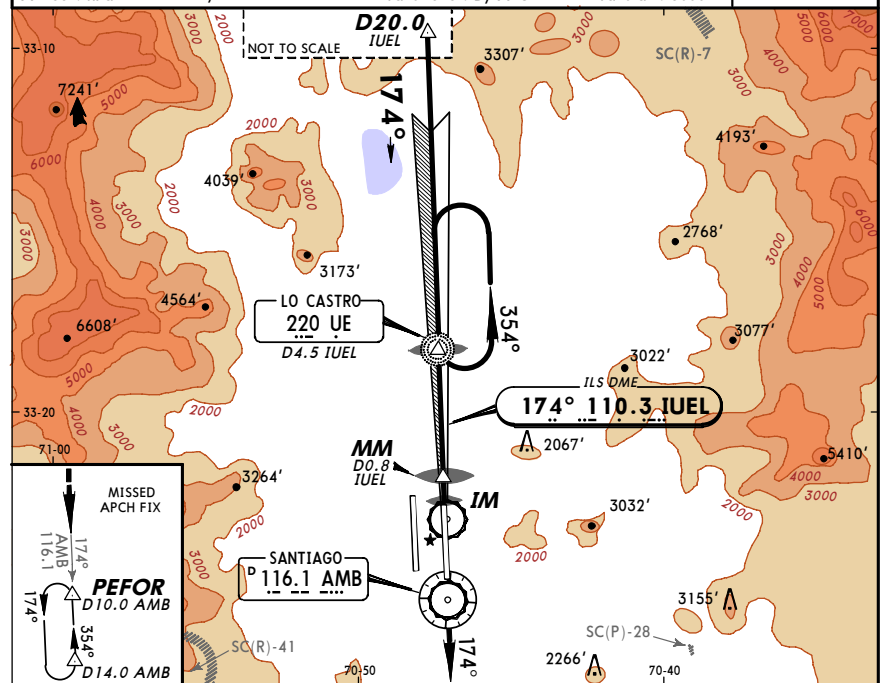
Except when cleared by Tower, all aircraft departing from their parking spots should be towed and/or guided by a vehicle marked 'FOLLOW ME' to Taxiway CHARLIE.

A numerical marking system for referencing position has been implemented on the west side of the Taxiway ALFA centerline, consisting of a BLACK number over a PINK circle with a BLACK ring or a WHITE ring around it.

SCEL/SCL **JEPPESEN** SANTIAGO, CHILE
 ARTURO MERINO BENITEZ INTL ILS Rwy 17L

21 SEP 07 (21-1) Eff 27 Sep

ATIS 132.1	SANTIAGO Center (APP)(R) 129.7	121.1	SANTIAGO Tower 118.1	118.35	122.2	Ground 122.5
LOC IUEL 110.3	Final Apch Crs 174°	GS LOM 2977' (1427')	ILS DA(H) 1750' (200')	Apt Elev 1555' Rwy 17L 1550'	19,000'	
MISSED APCH: Climb to 5000' outbound via AMB VOR R-174 and join the holding pattern. Hold between PEFOR/D10.0 AMB and D14.0 AMB on 354° inbound, LEFT turns, or in accordance with ATC clearance.						MSA AMB VOR
Alt Set: hPa Rwy Elev: 56 hPa Trans level: By ATC Trans alt: 5000'						

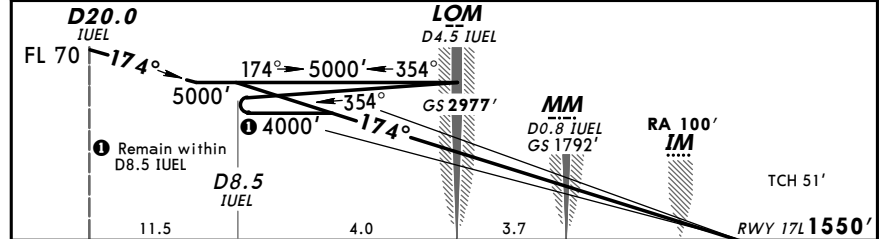
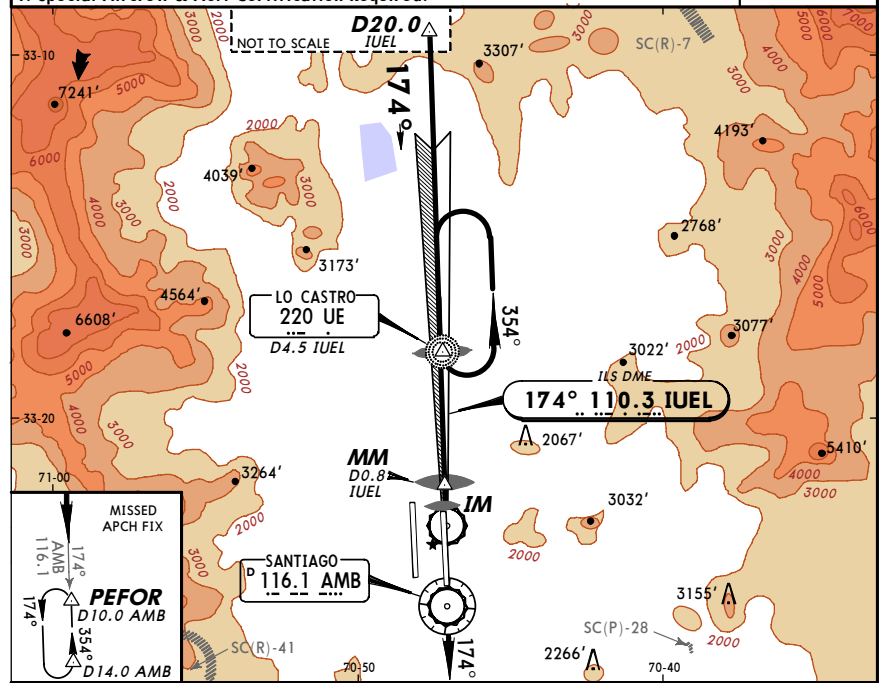


Gnd speed-Kts	70	90	100	120	140	160	ALSF-II REIL PAPI 5000' via 116.1 R-174	
GS	3:00°	377	484	538	646	753		861
MAP at MM or FAF to MAP	3.7	3:20	2:36	2:20	1:57	1:40		1:28

ILS				LOC (GS out)		CIRCLE-TO-LAND	
DA(H) 1750' (200')				MDA(H) 1980' (430')			
FULL		TDZ or CL out		ALS out		ALS out	
A						A	
B	RVR 550m	RVR 550m	1.2 km	1.2 km	1.6 km	NA	
C	VIS 0.8 km	RVR 720m VIS 0.8 km			2.0 km		
D			2.0 km	2.4 km			

SCEL/SCL **JEPPESEN** **SANTIAGO, CHILE**
ARTURO MERINO BENITEZ INTL **21 SEP 07** **(21-1A) ILS Rwy 17L CAT II & III**

ATIS 132.1		SANTIAGO Center (APP)(R) 129.7		SANTIAGO Tower 121.1		Ground 118.1 118.35 122.2 122.5	
LOC IUEL 110.3	Final Apch Crs 174°	GS LOM 2977' (1427')	CAT IIIB Refer to Minimums	CAT IIIA	CAT II ILS RA 100' DA(H) 1650' (100')	Apt Elev 1555'	19,000'
MISSED APCH: Climb to 5000' outbound via AMB VOR R-174 and join the holding pattern. Hold between PEFOR/D10.0 AMB and D14.0 AMB on 354° inbound, LEFT turns, or in accordance with ATC clearance.							MSA AMB VOR
Alt Set: hPa Rwy Elev: 56 hPa Trans level: By ATC Trans alt: 5000' 1. Special Aircrew & Acft Certification Required.							



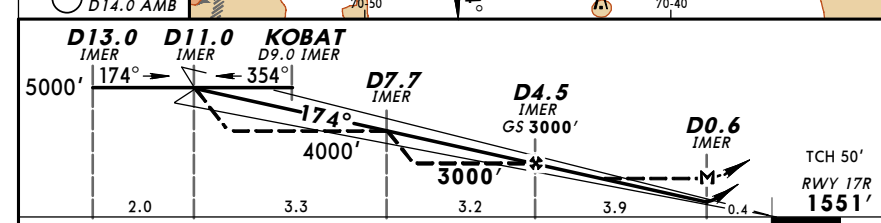
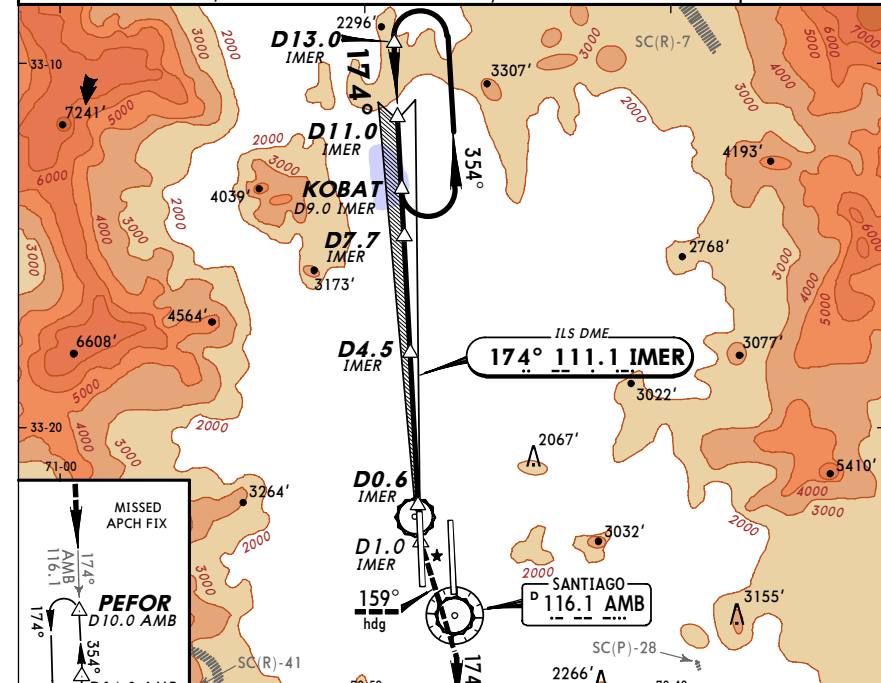
Gnd speed-Kts	70	90	100	120	140	160	ALSF-II REIL PAPI	5000' AMB via 116.1 R-174
GS	3.00°	377	484	538	646	753		

STRAIGHT-IN LANDING RWY 17L		CAT II ILS	
CAT IIIB ILS	CAT IIIA ILS	RA 100' DA(H) 1650' (100')	RA 150' DA(H) 1700' (150')
RVR 100m	RVR 200m	RVR 350m	RVR 500m

1 Aircraft operating "fail passive" DA(H) 1600'(50').

SCEL/SCL **JEPPESEN** **SANTIAGO, CHILE**
ARTURO MERINO BENITEZ INTL **21 SEP 07** **(21-2) ILS Rwy 17R**

ATIS 132.1		SANTIAGO Center (APP)(R) 129.7		SANTIAGO Tower 121.1		Ground 118.1 118.35 122.2 122.5	
LOC IMER 111.1	Final Apch Crs 174°	GS D4.5 3000' (1449')	ILS DA(H) 1751' (200')	Apt Elev 1555'	19,000'	MSA AMB VOR	
MISSED APCH: Climb on 174° hdg to D1.0 IMER (South), turn to 159° hdg to intercept AMB R-174 and climb to 5000'. Join the holding pattern and hold between PEFOR/D10.0 AMB and D14.0 AMB on 354° inbound, LEFT turns, or in accordance with ATC clearance.							MSA AMB VOR
Alt Set: hPa Rwy Elev: 56 hPa Trans level: By ATC Trans alt: 5000'							



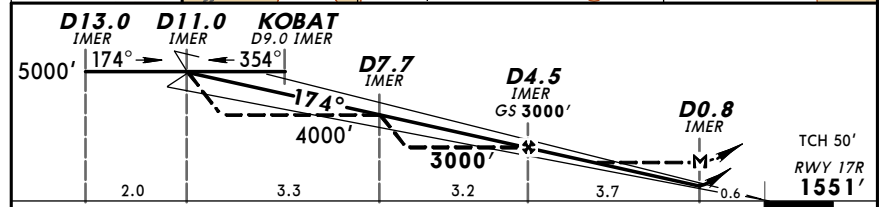
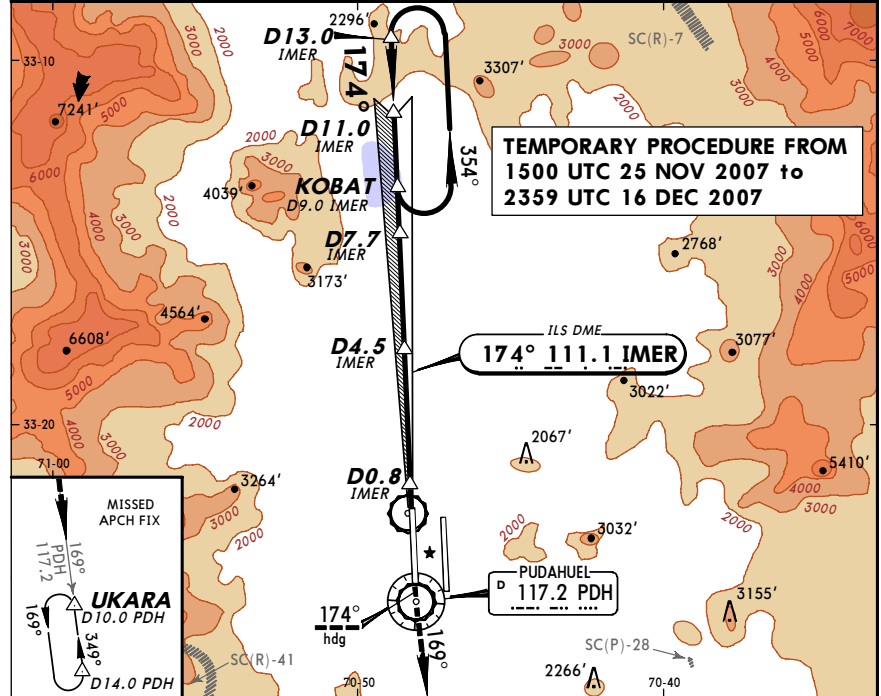
Gnd speed-Kts	70	90	100	120	140	160	ALSF-I REIL PAPI	174° hdg D1.0 IMER (South)
GS	3.00°	377	484	538	646	753		

STRAIGHT-IN LANDING RWY 17R				CIRCLE-TO-LAND	
ILS DA(H) 1751' (200')		LOC (GS out) MDA(H) 1980' (429')			
FULL		ALS out			
A	RVR 550m	1.2 km	1.2 km	1.6 km	NA
B	RVR 720m		1.6 km	2.0 km	
C	vis 0.8 km		2.0 km	2.4 km	
D					

1 Special Aircrew and Aircraft Certification required. 2 Without IMER DME: NA

SCEL/SCL **JEPPESEN** **SANTIAGO, CHILE**
 ARTURO MERINO BENITEZ INTL 16 NOV 07 (21-2-1) Eff 25 Nov ILS Rwy 17R

ATIS 132.1		SANTIAGO Center (APP)(R) 129.7 121.1		SANTIAGO Tower 118.1 118.35		Ground 122.2 122.5	
LOC IMER 111.1	Final Apch Crs 174°	GS D4.5 3000' (1449')	ILS DA(H) 1800' (249')	Apt Elev 1555'		19,000'	
MISSED APCH: Climb on 174° hdg to PDH VOR and follow PDH VOR R-169 outbound climbing to 5000'. Join the holding pattern and hold between UKARA/D10.0 PDH and D14.0 PDH on 349° inbound, LEFT turns, or in accordance with ATC clearance.				Rwy 17R 1551'			
Alt Set: hPa		Rwy Elev: 56 hPa		Trans level: By ATC		Trans alt: 5000'	

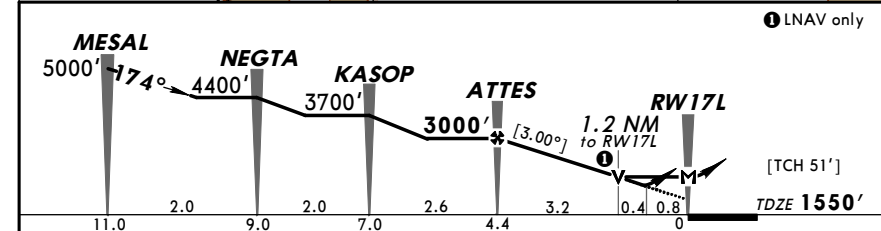
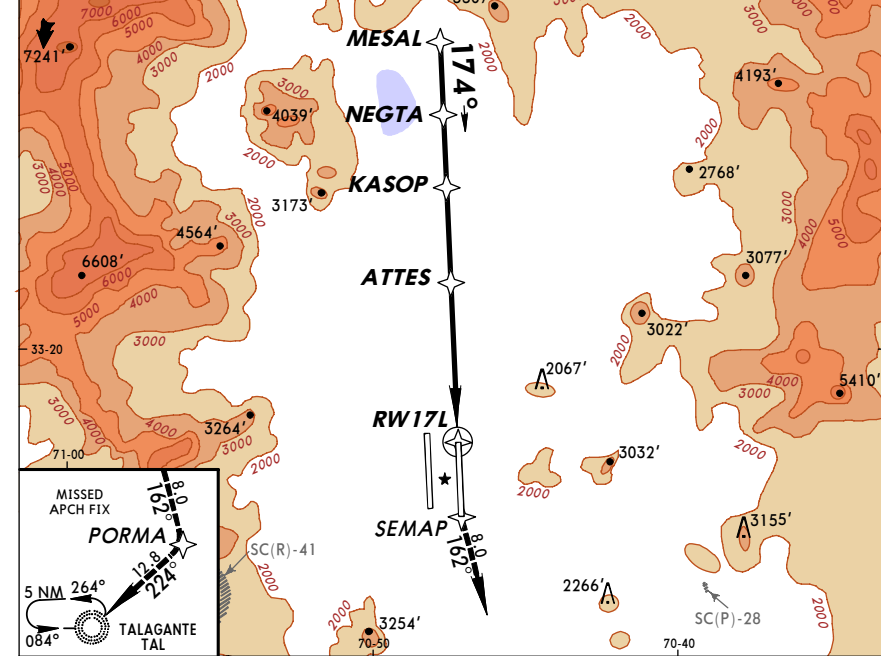


Gnd speed-Kts	70	90	100	120	140	160	ALS-FI REIL PAPI	174° hdg	PDH 117.2	
GS	3.00°	377	484	538	646	861				
MAP at D0.8 or FAF to MAP	3.7	3:10	2:28	2:13	1:51	1:35	1:23			
STRAIGHT-IN LANDING RWY 17R				CIRCLE-TO-LAND						
ILS DA(H) 1800' (249')		LOC (GS out) MDA(H) 1980' (429')								
A	FULL		ALS out		ALS out					
B	RVR 720m		1.2 km		1.2 km		1.6 km		NA	
C	VIS 0.8 km		1.2 km		1.6 km		2.0 km		NA	
D			1.2 km		2.0 km		2.4 km		NA	

Without IMER DME : NA

SCEL/SCL **JEPPESEN** **SANTIAGO, CHILE**
 ARTURO MERINO BENITEZ INTL 21 SEP 07 (22-1) Eff 27 Sep RNAV (GNSS) Rwy 17L

ATIS 132.1		SANTIAGO Center (APP)(R) 129.7 121.1		SANTIAGO Tower 118.1 118.35		Ground 122.2 122.5	
RNAV	Final Apch Crs 174°	Minimum Alt ATTES 3000' (1450')	LNAV/VNAV DA(H) 1860' (310')	Apt Elev 1555'		19,000'	
MISSED APCH: Climb to 5000' direct to SEMAP, direct to PORMA, direct to TAL NDB. Enter holding 084°, LEFT turns, or as directed by ATC.				TDZE 1550'			
Alt Set: hPa		TDZ Elev: 56 hPa		Trans level: By ATC		Trans alt: 5000'	
		1. RADAR required.		2. Baro-VNAV not authorized below -18°C (0°F).		MSA RW17L	

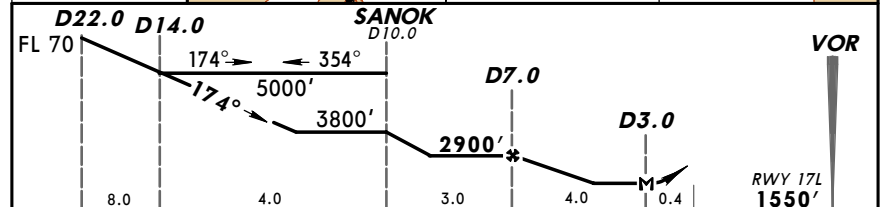
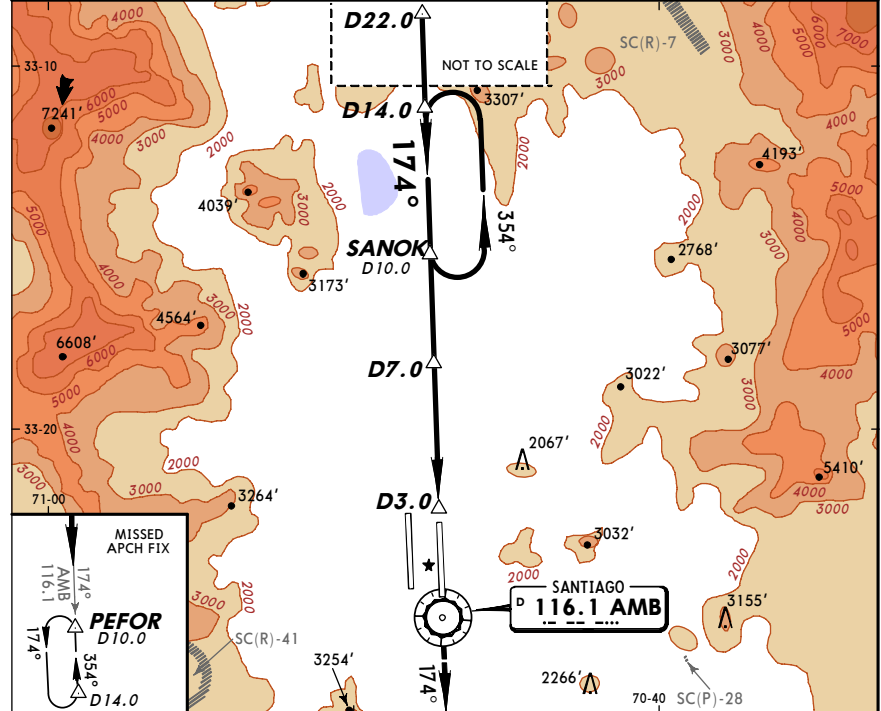


Gnd speed-Kts	70	90	100	120	140	160	ALS-FI REIL PAPI	5000'	SEMARP	
Descent angle	[3.00°]	372	478	531	637	849				
MAP at RW17L										
STRAIGHT-IN LANDING RWY 17L				CIRCLE-TO-LAND						
LNAV/VNAV DA(H) 1860' (310')		LNAV MDA(H) 1980' (430')								
A	ALS out		ALS out							
B	1.2 Km		1.6 Km		1.2 Km		1.6 Km		NA	
C	1.2 Km		1.6 Km		2.0 Km		2.4 Km		NA	
D			1.2 Km		2.0 Km		2.4 Km		NA	

CHANGES: Communications.

SCEL/SCL **JEPPESEN** **SANTIAGO, CHILE**
 ARTURO MERINO BENITEZ INTL 21 SEP 07 (23-1) Eff 27 Sep VOR DME Rwy 17L

ATIS		SANTIAGO Center (APP) (R)		SANTIAGO Tower		Ground	
132.1		129.7 121.1		118.1 118.35		122.2 122.5	
VOR AMB 116.1	Final Apch Crs 174°	Minimum Alt D7.0 2900' (1350')	MDA(H) 1980' (430')	Apt Elev 1555' Rwy 17L 1550'		19,000'	
MISSED APCH: Climb to 5000' outbound via AMB VOR R-174 and join the holding pattern. Hold between PEFOR/D10.0 and D14.0 on 354° inbound, LEFT turns, or in accordance with ATC clearance.							
Alt Set: hPa		Rwy Elev: 56 hPa		Trans level: By ATC		Trans alt: 5000'	

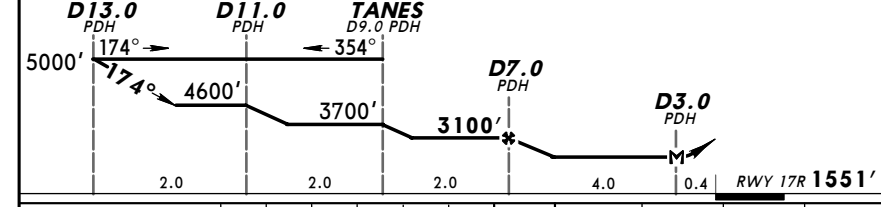
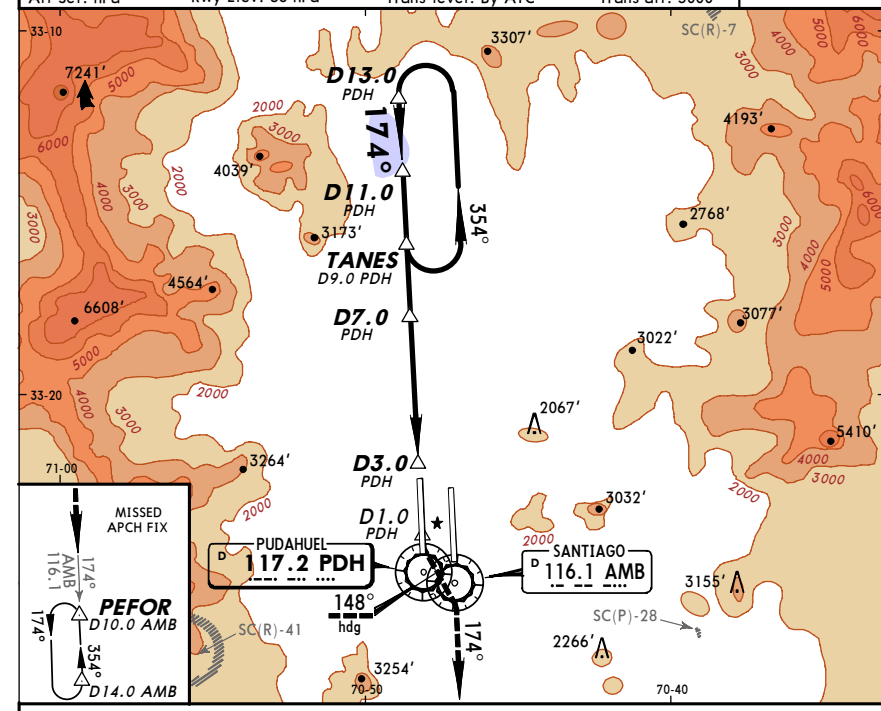


Gnd speed-Kts	70	90	100	120	140	160	ALSF-II REIL PAPI	5000' AMB via 116.1 R-174
Rate of descent (feet/min)	268	345	383	460	536	613		
MAP at D3.0	4.0 3:26 2:40 2:24 2:00 1:43 1:30							
FAF to MAP	4.0 3:26 2:40 2:24 2:00 1:43 1:30							

STRAIGHT-IN LANDING RWY 17L MDA(H) 1980' (430')				CIRCLE-TO-LAND			
ALS out				ALS out			
A	1.2 km		1.6 km		A	NA	
B	1.6 km		2.0 km		B	NA	
C	2.0 km		2.4 km		C	NA	
D	2.4 km				D	NA	

SCEL/SCL **JEPPESEN** **SANTIAGO, CHILE**
 ARTURO MERINO BENITEZ INTL 21 SEP 07 (23-2) Eff 27 Sep VOR DME Rwy 17R

ATIS		SANTIAGO Center (APP) (R)		SANTIAGO Tower		Ground	
132.1		129.7 121.1		118.1 118.35		122.2 122.5	
VOR PDH 117.2	Final Apch Crs 174°	Minimum Alt D7.0 3100' (1549')	MDA(H) 1980' (429')	Apt Elev 1555' Rwy 17R 1551'		19,000'	
MISSED APCH: Climb on 174° hdg to D1.0 PDH, turn to 148° hdg to intercept AMB R-174 and climb to 5000'. Join the holding pattern and hold between PEFOR/D10.0 AMB and D14.0 AMB on 354° inbound, LEFT turns, or in accordance with ATC clearance.							
Alt Set: hPa		Rwy Elev: 56 hPa		Trans level: By ATC		Trans alt: 5000'	

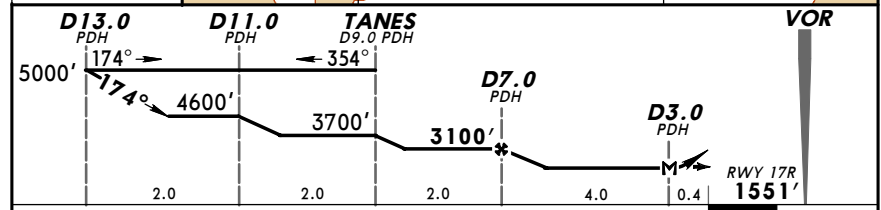
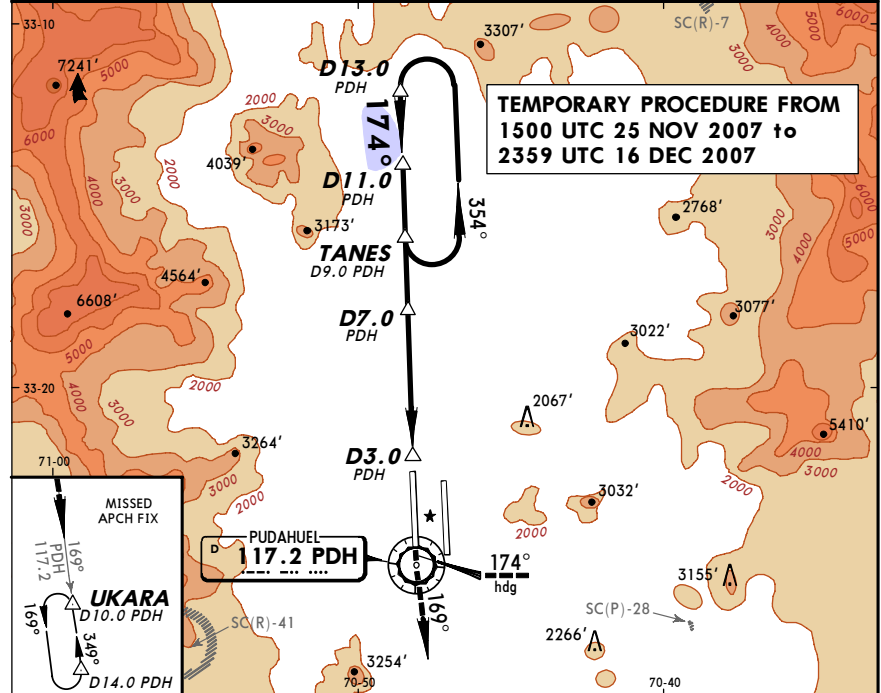


Gnd speed-Kts	70	90	100	120	140	160	ALSF-I REIL PAPI	174° hdg D1.0 PDH
Rate of descent (feet/min)	326	421	467	560	655	747		
MAP at D3.0 PDH	4.0 3:26 2:40 2:24 2:00 1:43 1:30							
FAF to MAP	4.0 3:26 2:40 2:24 2:00 1:43 1:30							

STRAIGHT-IN LANDING RWY 17R MDA(H) 1980' (429')				CIRCLE-TO-LAND			
ALS out				ALS out			
A	1.2 km		1.6 km		A	NA	
B	1.6 km		2.0 km		B	NA	
C	2.0 km		2.4 km		C	NA	
D	2.4 km				D	NA	

SCEL/SCL SANTIAGO, CHILE
 ARTURO MERINO BENITEZ INTL 16 NOV 07 (23-2-1) VOR DME Rwy 17R

ATIS		SANTIAGO Center (APP) (R)		SANTIAGO Tower		Ground	
132.1		129.7 121.1		118.1 118.35		122.2 122.5	
VOR PDH	Final Apch Crs	Minimum Alt	MDA(H)	Apt Elev 1555'			
117.2	174°	3100' (1549')	1980' (429')	Rwy 17R 1551'			
MISSED APCH: Climb on 174° hdg to PDH VOR and follow PDH VOR R-169 outbound climbing to 5000'. Join the holding pattern and hold between UKARA/D10.0 PDH and D14.0 PDH on 349° inbound, LEFT turns, or in accordance with ATC clearance.							19,000' MSA PDH VOR
Alt Set: hPa Rwy Elev: 56 hPa Trans level: By ATC Trans alt: 5000'							

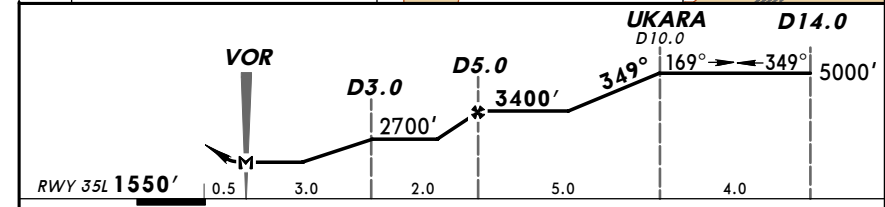
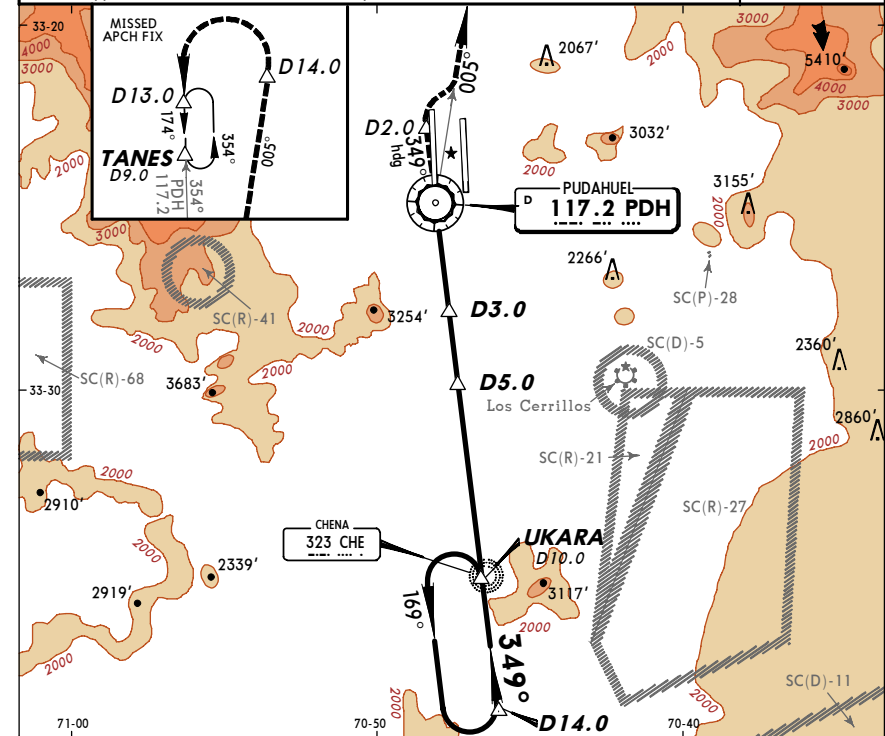


Gnd speed-Kts	70	90	100	120	140	160	REIL PAPI	↑	174° hdg	PDH 117.2
Rate of descent (feet/min)	326	421	467	560	655	747				
MAP at D3.0 PDH	4.0	3:26	2:40	2:24	2:00	1:43				

STRAIGHT-IN LANDING RWY 17R				CIRCLE-TO-LAND			
MDA(H) 1980' (429')				ALS out			
A	1.2 km		1.6 km	A	NA		
B				B			
C	1.6 km		2.0 km	C			
D	2.0 km		2.4 km	D			

SCEL/SCL SANTIAGO, CHILE
 ARTURO MERINO BENITEZ INTL 21 SEP 07 (23-3) Eff 27 Sep VOR DME Rwy 35L

ATIS		SANTIAGO Center (APP) (R)		SANTIAGO Tower		Ground	
132.1		129.7 121.1		118.1 118.35		122.2 122.5	
VOR PDH	Final Apch Crs	Minimum Alt	MDA(H)	Apt Elev 1555'			
117.2	349°	3400' (1850')	1900' (350')	Rwy 35L 1550'			
MISSED APCH: Climb on 349° heading to D2.0 (North), continue climb to 5000' outbound via PDH VOR R-005 to D14.0. Turn LEFT to enter hold at TANES/D9.0. Hold between D13.0 and TANES/D9.0 R-354 (174° inbound), LEFT turns, or in accordance with ATC clearance.							19,000' MSA PDH VOR
Alt Set: hPa Rwy Elev: 56 hPa Trans level: By ATC Trans alt: 5000' I. Final approach track offset 4° from runway centerline.							

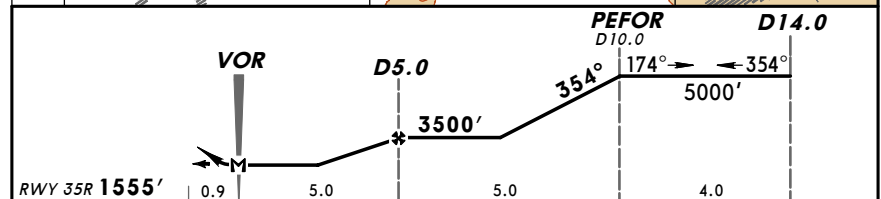
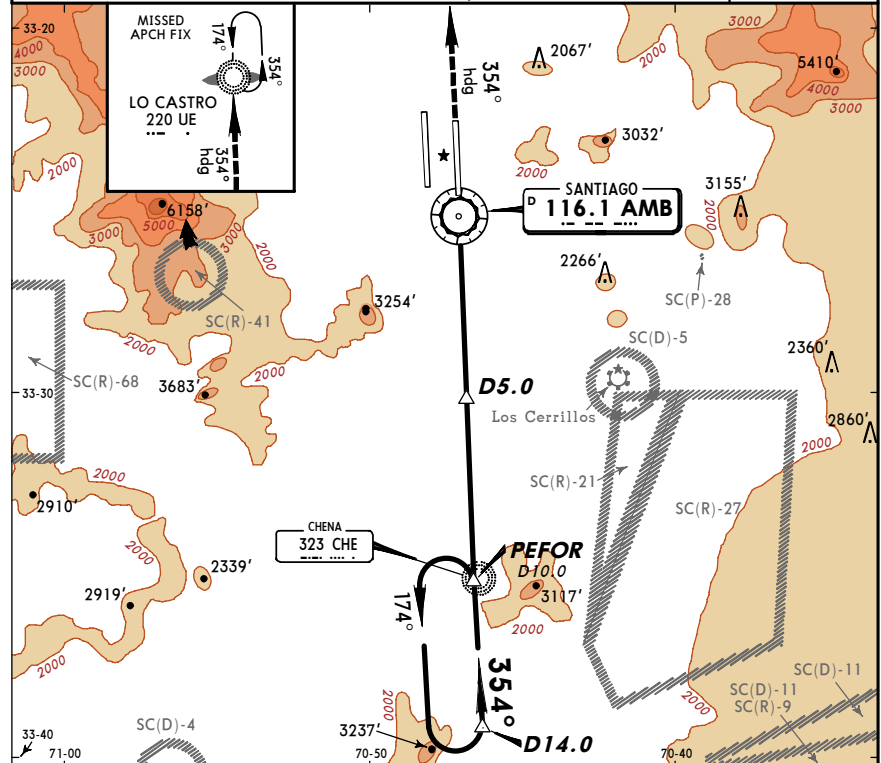


Gnd speed-Kts	70	90	100	120	140	160	REIL PAPI-L	↑	349° hdg	D2.0 PDH
Rate of descent on final (feet/min)	349	450	500	600	670	798				
MAP at VOR	5.0	4:17	3:20	3:00	2:30	2:09				

STRAIGHT-IN LANDING RWY 35L				CIRCLE-TO-LAND			
MDA(H) 1900' (350')				ALS out			
A	1.6 km			A	NA		
B				B			
C				C			
D	2.0 km			D			

SCEL/SCL **JEPPESEN** **SANTIAGO, CHILE**
ARTURO MERINO BENITEZ INTL 21 SEP 07 **(23-4)** **Eff 27 Sep** **VOR DME Rwy 35R**

ATIS 132.1	SANTIAGO Center (APP) (R) 129.7	SANTIAGO Tower 121.1	SANTIAGO Tower 118.1	Ground 118.35	Ground 122.2	Ground 122.5
VOR AMB 116.1	Final Apch Crs 354°	Minimum Alt D5.0 3500' (1945')	MDA(H) 1900' (345')	Apt Elev 1555'	Rwy 35R 1555'	19,000'
MISSED APCH: Climb to 5000' on 354° heading and proceed direct to UE LOM and join the holding pattern.						
Alt Set: hPa Rwy Elev: 56 hPa Trans level: By ATC Trans Alt: 5000'						MSA AMB VOR



Gnd speed-Kts	70	90	100	120	140	160	SSALS REIL PAPI 5000' 354° hdg
Rate of descent on final (feet/min)	299	384	427	512	595	680	
MAP at VOR	5.0	4:17	3:20	3:00	2:30	2:09	
FAF to MAP							

STRAIGHT-IN LANDING RWY 35R		CIRCLE-TO-LAND	
MDA(H) 1900' (345')		ALS out	
A	1.2 km	1.6 km	NA
B			
C			
D	1.6 km	2.0 km	