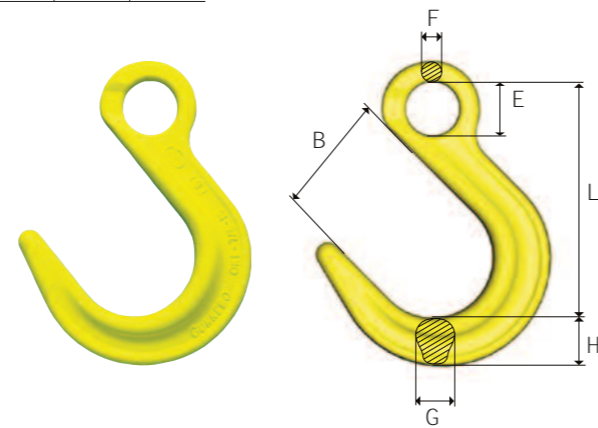


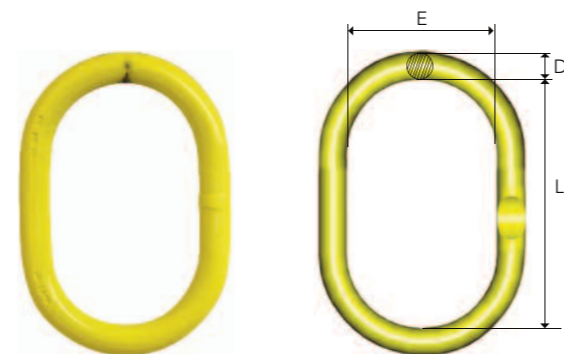
2.25 Gunnebo Foundry Hook OKE GrabiQ

Part no.	Code	Weight (each) kg	Working load limit ton	Dimensions mm					
				L	B	E	F	G	H
CAG2.5OKE	OKE-7/8-10	0.755	2.5	124	63	28	12	21	26
CAG4OKE	OKE-10-10	1.342	4	151	76	34	15	26	30
CAG6.7OKE	OKE-13-10	2.769	6.7	184	90	44	19	33	39
CAG10OKE	OKE-16-10	4.934	10	218	102	56	23	40	46
CAG16OKE	OKE-20-10	7.174	16	247	114	60	27	46	60
CAG20OKE	OKE-22-10	11.25	20	275	120	64	31	60	70



2.26 Gunnebo Master Link M GrabiQ

Part no.	Code	Weight (each) kg	Working load limit ton	Dimensions mm		
				L	E	D
CAG1.25ML	M-6-10	0.225	1.25	100	60	11
CAG2.5ML	M-86-10	0.438	2.5	125	70	14
CAG4ML	M-108-10	0.764	4	140	80	17
CAG5.4ML	M-13-10	1.053	5.4	150	90	19
CAG7.5ML	M-1310-10	1.491	7.5	160	95	22
CAG10ML	M-1613-10	2.809	10	190	110	28
CAG12ML	M-19-10	3.426	12	200	120	30
CAG17ML	M-2016-10	5.283	17	240	140	34
CAG25ML	M-2220-10	7.766	25	250	150	40
CAG28ML	M-2622-10	7.8	28	250	150	42
CAG33ML	M-32-10	11.798	33	300	180	45
CAG43ML	M-3226-10	15.098	43	300	200	50
CAG56ML	M-3632-10	20.7	56	350	200	55
CAG70ML	M-4536-10	25.794	70	375	210	60
CAG90ML	M-90T-10	41.5	90	450	250	41.5
CAG125ML	M-125T-10*	56	125	450	260	80



*Dimension L and E not acc. to EN 1677-4.

Lifting Equipment



3.01 Handy 'the smallest' ratchet lever hoists

Part no.	Capacity (SWL) kg	Falls of load chain	Chain dimensions mm	Lifting height mm	Closed height kg	Weight at std. HOL kg
LEY0.25LH	250	1	4 x 12	1.5	240	2.2
LEY0.5LH	500	1	4 x 12	1.5	282	2.8



3.02 PT 'pressed steel' ratchet lever hoists

Part no.	Capacity (SWL) kg	Falls of load chain	Chain dimensions mm	Lifting height mm	Closed height kg	Weight at std. HOL kg
LEY0.8PTLH	800	1	5.6 x 17.1	1.5	290	5.5
LEY1.6PTLH	1600	1	7.1 x 21.2	1.5	330	9.6
LEY3.2PTLH	3200	1	9.0 x 27.2	1.5	430	16
LEY6.3PTLH	6300	2	9.0 x 27.2	1.5	580	31



3.03 UNOplus 'economy' ratchet lever hoists

Part no.	Capacity (SWL) kg	Falls of load chain	Chain dimensions mm	Lifting height mtrs	Closed height kg	Weight at std. HOL kg
LEY0.75UPLH	750	1	6 x 18	1.5	350	7.2
LEY1.5UPLH	1500	1	8 x 24	1.5	420	12.5
LEY3UPLH	3000	1	10 x 30	1.5	520	21.5
LEY6UPLH	6000	2	10 x 30	1.5	700	32



3.04 VSIII 'medium duty' hand chain hoists

Part no.	Capacity (SWL) kg	Falls of load chain	Chain dimensions mm	Lifting height mm	Closed height kg	Weight at std. HOL kg
LEY0.5VS	500	1	6 x 8	3	320	9
LEY1VS	1000	1	6 x 8	3	370	11.2
LEY2-1VS	2000	1	8 x 24	3	450	18
LEY2-2VS	2000	2	6 x 18	3	530	15.3
LEY3-1VS	3000	1	10 x 30	3	530	28
LEY3-2VS	3000	2	8 x 24	3	620	24.7
LEY5VS	5000	2	10 x 30	3	620	38.7



3.05 Yalelift 360® MKIII 'premium' hand chain hoists

Part no.	Capacity (SWL) kg	Falls of load chain	Chain dimensions mm	Lifting height mm	Closed height kg	Weight at std. HOL kg
LEY360-0.5	500	1	5 x 15	3	300	9
LEY360-1	1000	1	6 x 18	3	335	13
LEY360-2	2000	1	8 x 24	3	395	20
LEY360-3	3000	1	10 x 30	3	520	29
LEY360-3	5000	2	10 x 30	3	654	38
LEY360-10	10000	3	10 x 30	3	825	71
LEY360-20	20000	6	10 x 30	3	1010	196



3.06 Yale Push Travel Trolley

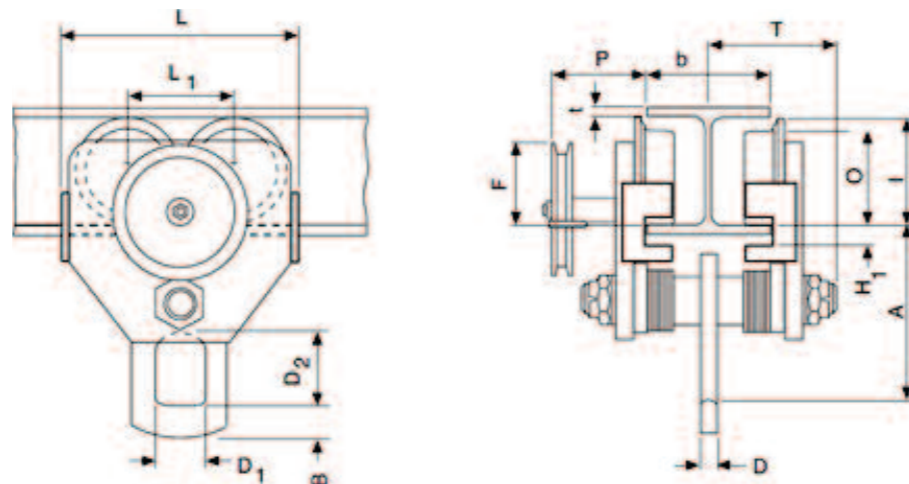
Other sizes upon request

Part no.	Model	Capacity kg	Size	Beam flange width b	Max. flange thickness t	Min. radius curve	Effort at WLL	Net weight kg
LEY0.5BT	htP 500	500	a	50-220	25	0.90	3	8
LEY1BT	htP 1000	1000	a	50-220	25	0.90	6	9
LEY2BT	htP 2000	2000	a	66-220	25	1.15	7	16
LEY3BT	htP 3000	3000	a	74-220	25	1.40	7	32
LEY5BT	htP 5000	5000	a	90-220	25	1.80	9	48



Dimensions htP in mm.

Model	A	D	D ₁	D ₂	F	H ₁	I	L	L ₁	O	P	T
htP 500	77	16	25	30	91.5	30.5	71.5	260	130	60	110	146
htP 1000	82.5	17	30	35	91.5	30.5	71.5	260	130	60	110	150
htP 2000	98.5	22	40	47	90.5	30.5	95.5	310	150	80	110	155
htP 3000	114	26	48	58	107.5	30	131	390	180	112	110	160
htP 5000	132.5	33	60	70	149.5	30	142.5	450	209	125	110	167.5

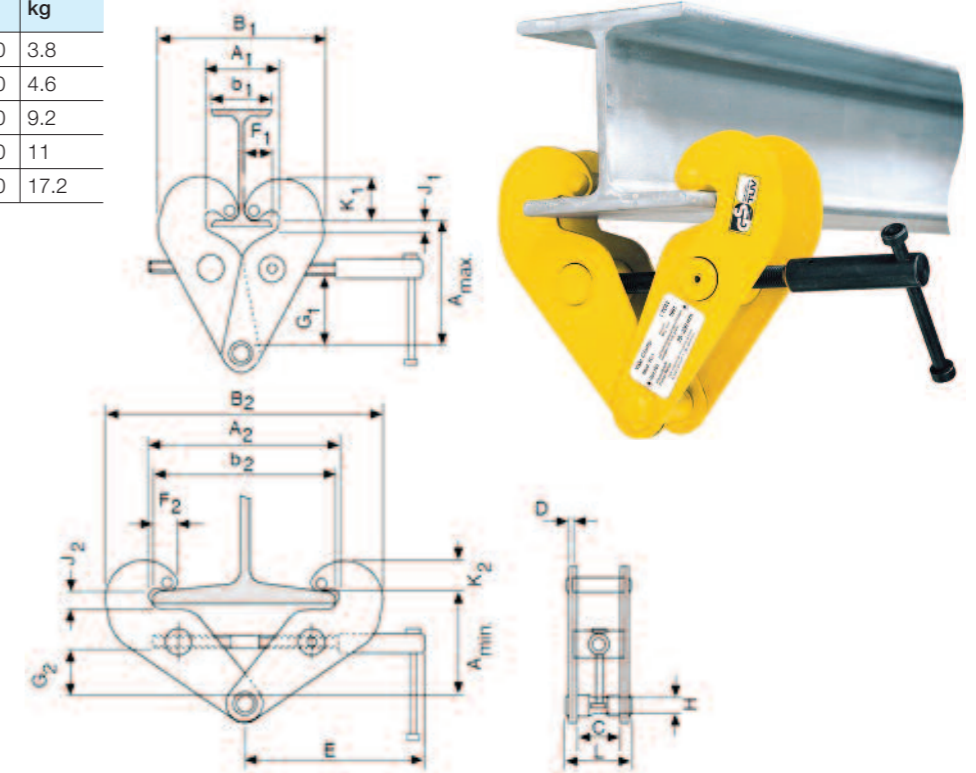


3.07 Beam Clamp P

Yale beam clamp, model YC

- Capacities 1000 - 10000 kg.
- Provides a quick and versatile rigging point for hoisting equipment, pulley blocks or loads.
- Flexible application due to wide adjustment range.
- The central threaded spindle can be secured against loosening.
- Can be supplied with optional shackle.
- Flattened, reinforced version for use on beams with reduced head height available on request.

Part no.	Model	Capacity kg	Flange width	Weight kg
LEY1BC	YC 1	1000	75-230	3.8
LEY2BC	YC 2	2000	75-230	4.6
LEY3BC	YC 3	3000	80-320	9.2
LEY5BC	YC 5	5000	90-320	11
LEY10BC	YC 10	10000	90-320	17.2



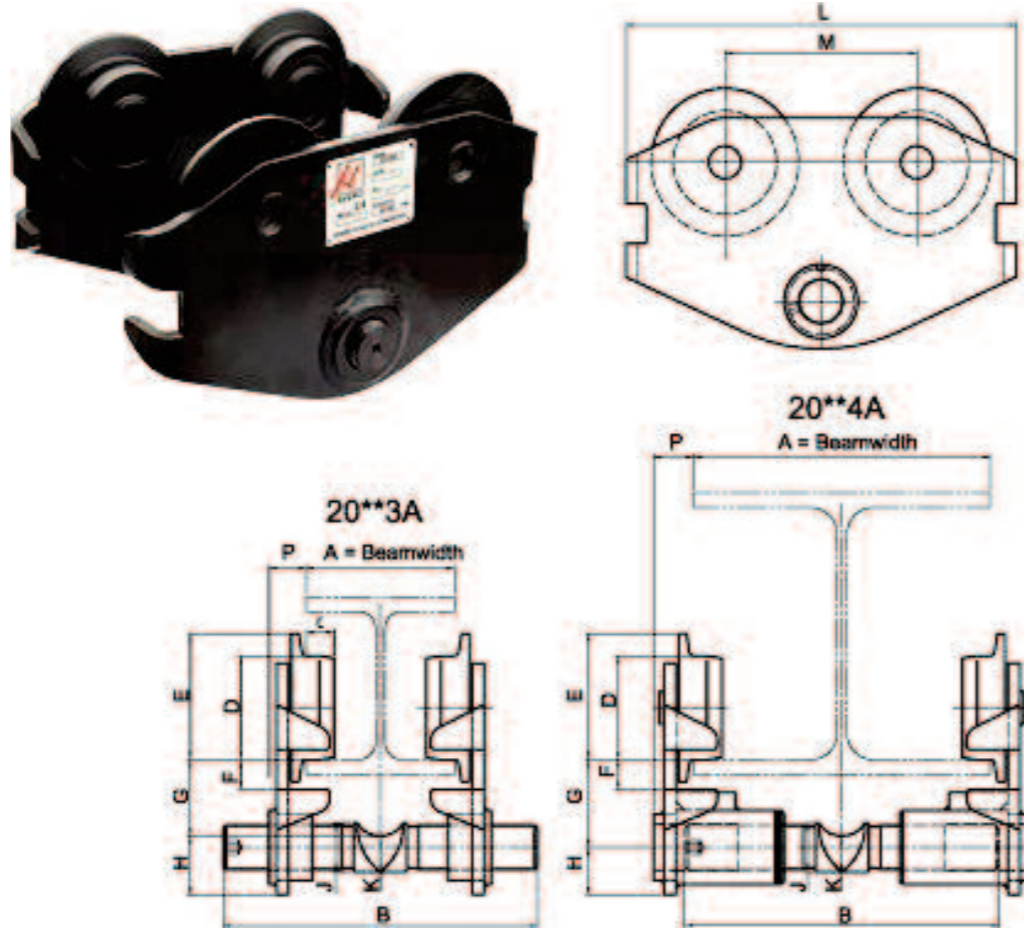
Dimensions in mm.

Capacity kg	A min.	A max.	A ₁	A ₂	B ₁	B ₂	b ₁	b ₂	C	D	E	F ₁	F ₂	G ₁	G ₂	H	J ₁	J ₂	K ₁	K ₂	L
1000	115	150	78	246	186	350	75	230	50	4	215	34	17	82	44	20	14	21	48	21	84
2000	115	150	78	246	186	350	75	230	50	6	215	35	18	82	44	20	14	21	50	32	94
3000	180	225	80	320	232	455	80	320	70	8	255	35	21	120	75	22	30	34	60	40	122
5000	180	225	90	310	242	445	90	310	70	10	255	35	21	116	75	28	30	34	60	42	129
10000	175	220	90	320	268	480	90	230	70	14	275	32	20	110	66	38	34	35	60	40	146

3.08 Svero Trolley

Trolley 20

Part no.	WLL kg	Model	A min-max	B	C	Ø D	E	F	G	H	Ø J	Ø K	L	M	P	Min. curve radius (m)	Weight kg
LES0.5BT	500	20123A	46-160	280	18	62	77	18	45	33	25	19	216	100	24	1	6
LES0.5BTW	500	20124A	161-280	280	18	62	77	18	45	33	25	19	216	100	24	1	6.4
LES1BT	1000	20143A	50-160	212	20	70	85	20	51	40	32	24	264	130	26	1.25	9.4
LES1BTW	1000	20144A	161-280	212	20	70	85	20	51	40	32	24	264	130	26	1.25	10.7
LES2BT	2000	20163A	64-180	248	24	100	118	25	63	51	40	32	345	165	30	1.80	19.0
LES2BTW	2000	20164A	181-300	248	24	100	118	25	63	51	40	32	345	165	30	1.80	21.0
LES3BT	3000	20173A	74-180	262	28	114	137	31	78	57	46	35	384	180	35	2.20	31.5
LES3BTW	3000	20174A	181-300	262	28	114	137	31	78	57	46	35	384	180	35	2.20	34.0
LES5BT	5000	20193A	82-180	270	34	140	165	34	92	64	56	42	455	215	40	2.50	55.0
LES5BTW	5000	20194A	181-300	270	34	140	165	34	92	64	56	42	455	215	40	2.50	58.0



3.09 Tiger PROLH Lever Hoists

Part no.	Capacity tonne	Load chain		Standard HOL (m)	Mass Kg @ std HOL
		Diameter	No. of falls		
LETPLH0075	0.75	Ø6.3	1	3	8.52
LETPLH0150	1.5	Ø7.1	1	3	11.85
LETPLH0300	3	Ø10	1	3	21.3
LETPLH0600	6	Ø10	2	3	34.6
LETPLH1000	10	Ø10	3	3	45.9

Lightweight, compact and rugged construction with the handle, gear case and brake cover made entirely of pressed steel, producing strong resistance to impact damage. Using only the highest quality materials precisely machined throughout ensures the PROLH is the ideal hoist for long-term use with less maintenance and servicing costs. These units meet and exceed all the requirements within BS EN 13157:2004 and ASME B30.21-2005.



3.10 Tiger SS11 Subsea Lever Hoist

Part no.	Capacity tonne	Load chain		Standard HOL (m)	Mass Kg @ std HOL
		Diameter	No. of falls		
LETSS0080	0.8	Ø6.3	1	3	8.52
LETSS0150	1.5	Ø7.1	1	3	11.85
LETSS0300	3	Ø10	1	3	21.3
LETSS0600	6	Ø10	2	3	34.6
LETSS1000	10	Ø10	3	3	45.9

The SS11 has been designed and developed over a number of years for use primarily in the Subsea environment. The design and anti-corrosion features incorporated in the SS11 hoist range give it significant safety advantages over standard lever hoists, making the hoist the ideal tool for all Marine and extreme applications.

Developed initially with the goal of giving key stakeholders within the Oil and Gas Industry a hoist that could be certified for safe use Subsea whilst meeting all the requirements of IMCA DO28 Rev. 1 "Guidance notes for offshore lever hoists" the SS11 meets and exceeds these requirements, as well as conforming to standards such as BS EN 13157:2004 and ASME B30.21-2005.



3.11 Tiger SS12 Chain Block

Part no.	Capacity tonne	Load chain		Standard HOL (m)	Mass Kg @ std HOL
		Diameter	No. of falls		
LETSCB0050	0.5	Ø6.3	1	3	10.8
LETSCB0100	1	Ø6.3	1	3	12
LETSCB0150	1.5	Ø7.1	1	3	16.3
LETSCB0200	2	Ø8	1	3	20.6
LETSCB0300	3	Ø10	1	3	32.5
LETSCB0500	5	Ø8	3	3	39
LETSCB1000	10	Ø10	3	3	62.3
LETSCB2000	20	Ø10	6	3	180

The SS12 is manufactured from the highest quality steel materials, offering a lightweight, compact and rugged construction, producing an exceptionally strong product resistant to impact damage. With the added advantages of having been fully protected against corrosion using Tigers OCP "Organic Corrosion Protection" formula that gives over 1000 hours continuous protection under ASTM B117 Salt spray conditions.

The exceptional short head room allows for easy installation where every centimetre must be achieved. Using only the highest quality materials precisely machined in our own factory, the SS12 is the ideal block for salt water use with less maintenance and servicing costs. These units meet and exceed all the requirements within BS EN 13157:2004 & ASME B30.16-2007.

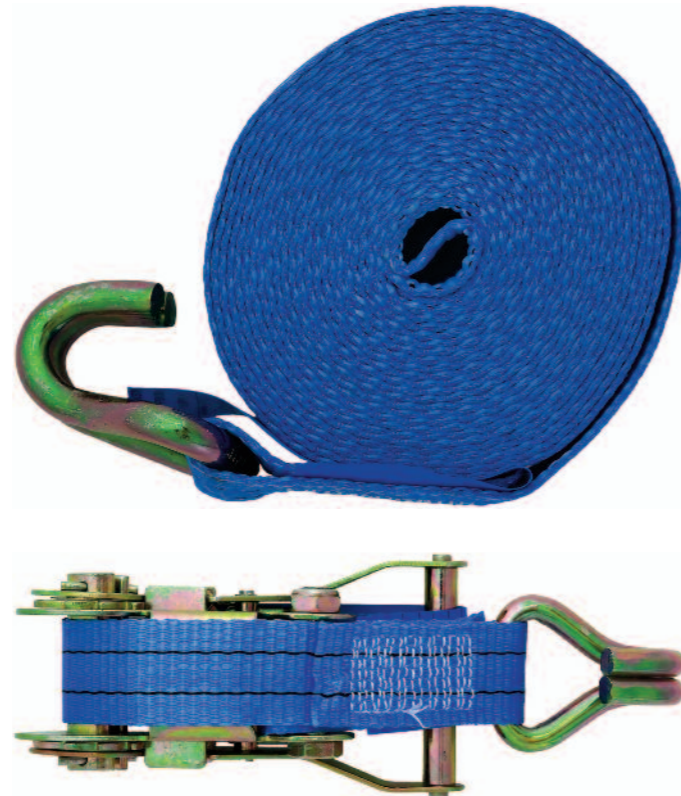


3.12 Ratchet straps c/w webbing

Polyester webbing load lashing sets

Part no.	Description	LC kg	Breaking load kg	Length m
LEU1010LRS	Fiber	5000	10000	10 (0.5 + 9.5)
LEU2.56LRS	Fiber	1250	2500	6 (0.5 + 5.5)
LEU510LRS	Fiber	2500	5000	10 (0.5 + 9.5)
LEU16LRS	Fiber	500	1000	6 (0.5 + 5.5)

End terminations are available in both claw hooks and 'D' rings.



3.13 Round Sling

Other sizes and rating available upon request

Part no.	Tonne	EWL mtr.	Circ mtr.
LEU11RS	1	1	2
LEU12RS	1	2	4
LEU13RS	1	3	6
LEU14RS	1	4	8
LEU15RS	1	5	10
LEU16RS	1	6	12
LEU21RS	2	1	2
LEU22RS	2	2	4
LEU23RS	2	3	6
LEU24RS	2	4	8
LEU25RS	2	5	10
LEU26RS	2	6	12
LEU31RS	3	1	2
LEU32RS	3	2	4
LEU33RS	3	3	6
LEU34RS	3	4	8
LEU35RS	3	5	10
LEU36RS	3	6	12
LEU51RS	5	1	2
LEU52RS	5	2	4
LEU53RS	5	3	6
LEU54RS	5	4	8
LEU55RS	5	5	10
LEU56RS	5	6	12
LEU81RS	8	1	2
LEU82RS	8	2	4
LEU83RS	8	3	6
LEU84RS	8	4	8
LEU85RS	8	5	10
LEU86RS	8	6	12
LEU101RS	10	1	2
LEU102RS	10	2	4
LEU103RS	10	3	6
LEU104RS	10	4	8
LEU105RS	10	5	10
LEU106RS	10	6	12



3.14 Duplex Webbing Sling

Other sizes and rating available upon request

Part no.	Tonne	EWL mtr.
LEU11WS	1	1
LEU12WS	1	2
LEU13WS	1	3
LEU14WS	1	4
LEU15WS	1	5
LEU16WS	1	6
LEU18WS	1	8
LEU110WS	1	10
LEU112WS	1	12
LEU21WS	2	1
LEU22WS	2	2
LEU23WS	2	3
LEU24WS	2	4
LEU25WS	2	5
LEU26WS	2	6
LEU28WS	2	8
LEU210WS	2	10
LEU212WS	2	12
LEU31WS	3	1
LEU32WS	3	2
LEU33WS	3	3
LEU34WS	3	4
LEU35WS	3	5
LEU36WS	3	6
LEU38WS	3	8
LEU310WS	3	10
LEU312WS	3	12
LEU52WS	5	2
LEU53WS	5	3
LEU54WS	5	4
LEU55WS	5	5
LEU56WS	5	6
LEU58WS	5	8
LEU510WS	5	10
LEU512WS	5	12



3.15 Wire Rope Slings

Wire rope slings are provided to your exact requirement, any length, dia and termination supplied. Please contact us for your exact requirements.



Soft Eye Machine Swaged



Thimble Eye Machine Swaged



Steel Ferrule Machine Swaged



Closed Swag Socket



3.16 Schat-Harding ARH 23

Automatic raft hook for davit launched life rafts

- The ARH 23 meets the latest SOLAS standards, LSA code res. MCS.48(66), and IMO Resolution MCS.81(70), as amended to date.
- Safe work load = 23 kN.
- The ARH is set to automatic just before the raft reaches the water by pulling the lanyard. When the rafts become waterborne the hook opens automatically.
- All hook handling can be done by one person.
- The hook and it's accessories are made of marine quality stainless steel and other non-corrosive materials, suitable for use in marine environments.
- The hook is designed to be opened manually if a towing strain prevents automatic opening.

Part no. MSH23RH



3.17 Sockets

All types available upon request. Made by quality manufactures like Crosby and Van Beest.



Closed spelter socket.



Open spelter socket.



Wedge socket.

3.18 Crosby S-421T Wedge Sockets

Assembly includes socket, wedge, pin and wire rope clip

Part no.	Wire rope diameter		Dimensions mm														
	mm	inch	A	B	C	D	G	H	J*	K*	L	P	R	S	T	U	V
LEC9WS	9-10	3/8	145	69.1	20.6	20.6	35.1	77.7	198	47.8	22.4	39.6	11.2	54.1	11.2	31.8	35.1
LEC12WS	11-13	1/2	175	88.1	25.4	25.4	41.1	95.5	226	32	26.9	49.3	12.7	65	13.5	44.5	47.8
LEC16WS	14-16	5/8	210	109	31.8	30.2	53.8	114	273	50.5	31	57.2	14.2	82.6	17.5	51	55.5
LEC19WS	18-19	3/4	251	130	38.1	35.1	62	134	314	61.2	35.6	66.8	16.8	92.2	19.8	59.5	65
LEC22WS	20-22	7/8	286	149	44.5	41.4	68.5	156	365	63	42.4	79.5	19.1	109	22.4	68.5	74.5
LEC25WS	24-26	1	325	161	51	51	74.7	177	414	77.2	51	95.5	22.4	119	26.2	73	83.5
LEC28WS	28	1-1/8	365	176	57	57	84	194	466	65	57	108	25.4	138	27.9	82.6	90.5
LEC32WS	30-32	1-1/4	415	222	66.5	63.5	90.5	239	520	74.7	59.5	114	26.9	156	30.2	117	125

*For intermediate wire rope sizes, use next larger size socket.

