

METABOX



# METABOX

The versatile metal drawer system

[blum.com](http://blum.com)

Perfecting motion 



METABOX — A drawer system with endless possibilities



# Efficient storage in contemporary styling

With METABOX, Blum offers an economical steel drawer for different application options in the kitchen, bathroom and office.



## Contents

4	METABOX drawer system
6	General specifications
8	320N drawer series
10	320M drawer series
12	320K drawer series
14	320H drawer series
16	330M drawer series
18	330H drawer series
20	Gallery rail and BOXSIDE
24	Interior roll-out application
30	BLUMOTION for METABOX
32	File drawer application
33	Lateral stabilizer
34	Roll-out shelf application
35	Accessories
37	Assembly tools
42	Drawer front overlay charts
43	Part number index



## Virtually unlimited storage solutions

The METABOX drawer program has a wide range of heights, lengths and optional accessories available. Within this comprehensive system, everything stored is easy to access and even small or bulky items are handled with ease.

METABOX's design complements the style of panel cabinetry that has gained popularity because of its effective use of cabinet interior space. Since it is fully compatible with the 32 mm cabinet construction system, the METABOX program makes installation quick and precise.

METABOX is a great solution for kitchens, baths, office, healthcare and commercial applications.



### Features & benefits

- Application possibilities
- Contemporary design
- Three-dimensional front adjustment
- Easy cam height adjustment
- Simple insertion and removal
- With BLUMATIC self-closing feature
- Single extension is available with BLUMOTION soft closing option

# Testing standards

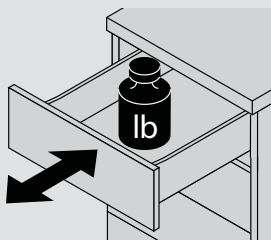


## Testing standards

Blum, Inc. is ISO 9001 certified which means that you are assured of consistent quality in every Blum product. All Blum runners must pass these tests without showing a measurable reduction in performance or deviation in adjustment position. Testing standards vary between products and applications.

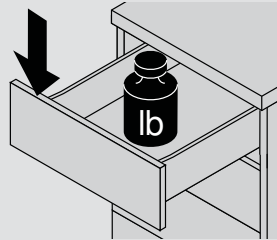
All Blum runners meet or exceed ANSI/BHMA 156.9 grade 1 requirements. Contact your local Blum representative for more details.

### Dynamic wear test



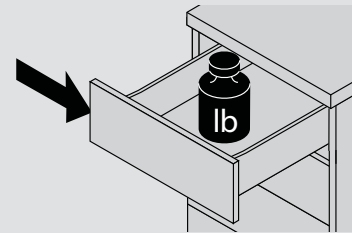
100,000 open/close cycles with a total load of 75 lb on a 550 mm drawer.

### Static load test



10 times for 10 seconds each time when completely extended, 66 lb is applied to the corner of the drawer front of a fully loaded drawer.

### Side pressure test



10 times for 10 seconds each time when completely extended, 33 lb is applied to the side of the drawer front of a fully loaded drawer.



## General information

All Blum hardware undergoes strict quality control procedures through all stages of production. Blum hardware is designed for cabinets and cabinet components made from wood, melamine or MDF. Careful attention must be paid to installation and operating instructions when using Blum hardware (see catalogs and instruction sheets for all technical information). The manufacturer must decide on the screws or attachment methods to suit the material being used (i.e. wood, melamine, etc.). The hardware must not be exposed to acidic or corrosive materials (i.e. some household cleaning solutions). To ensure that Blum hardware functions correctly, it must be kept clean and undamaged. For any additional information please contact your Blum representative. Anyone selling Blum hardware must ensure that their customer is aware of any relevant information given in this catalog.

### Conditions of sale and delivery

All deliveries and services are based on the "general conditions of sale" which are available upon request. The technical presentations and dimensions in illustrations are non-binding. We reserve the right to make changes to specifications at any time. We do not accept any responsibility for any errors which may occur in the production of this catalog.

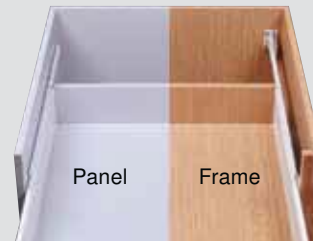
# General specifications

## Cabinet types and capacity

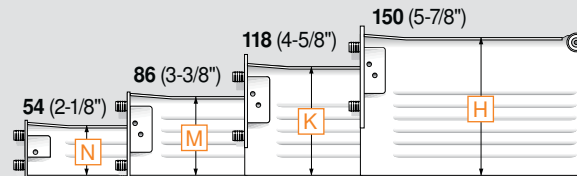
The METABOX drawer system can be installed in either panel or face frame constructed cabinets with optional rear mounting sockets.

METABOX drawers have a static load capacity of 100 lb and a dynamic capacity of 75 lb and are tested to perform 100,000 open/close cycles without failure.

METABOX drawers install in all cabinets

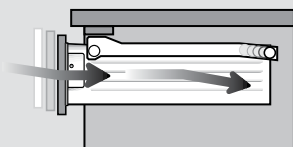


## Available heights

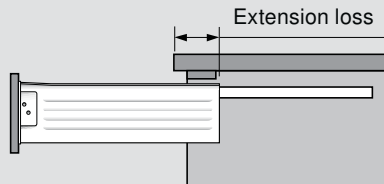


METABOX is available in white in four drawer heights, offering a multitude of design options.

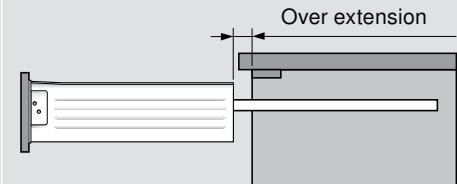
## Opening and closing information



BLUMATIC self-closing action results from the angled drawer and cabinet profiles.



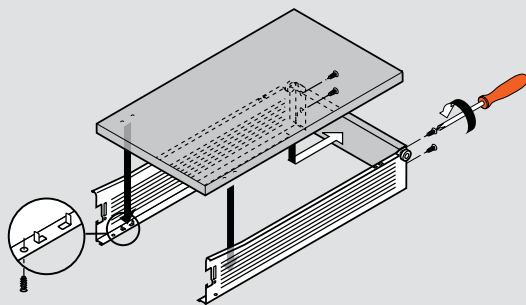
320 series 3/4 extension drawers have an extension loss when fully opened.



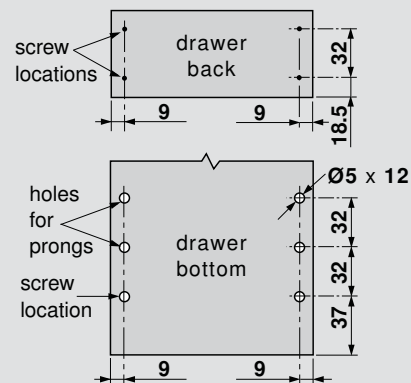
330 series full extension drawers have an over extension of 18 (3/4") when fully opened.

## Drawer back and bottom preparation

### METABOX "C15" version



METABOX "C15" drawers can be assembled with the aid of the Universal boring template (page 37).

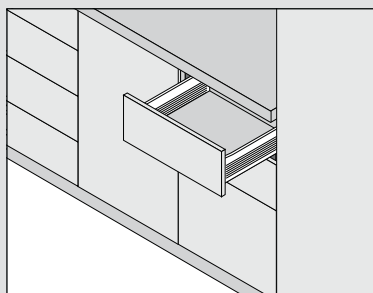


Boring for C15 drawer back and bottom (for 13 (1/2") material, holes are 10 (3/8") deep)

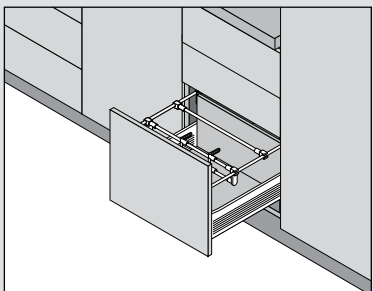


## Drawer configurations

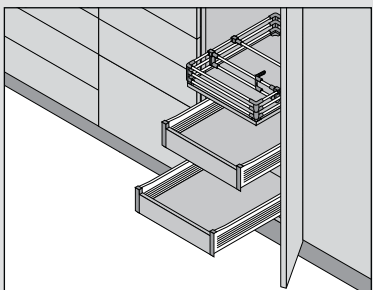
### Standard drawer



### Standard drawer with gallery organization

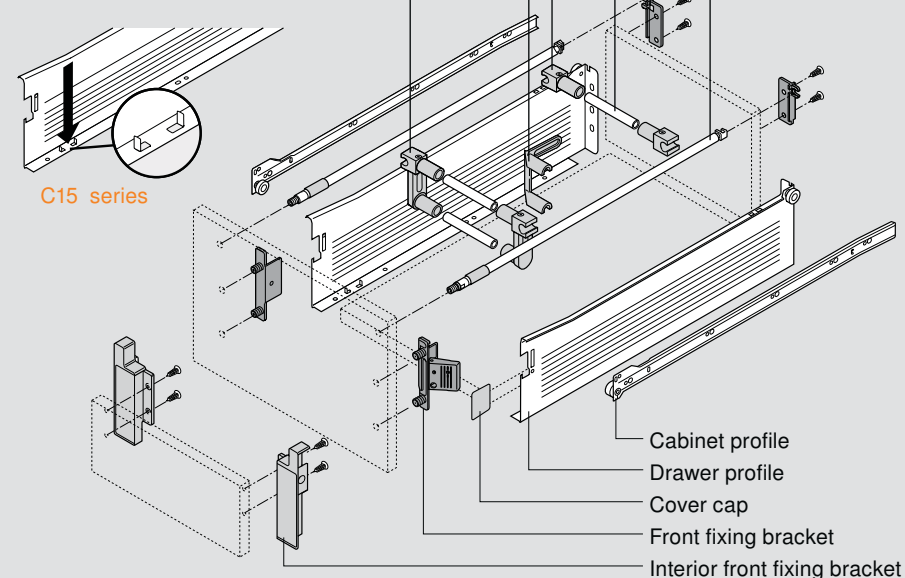


### Pull-out surround shelf (top) Interior roll-out trays (bottom)

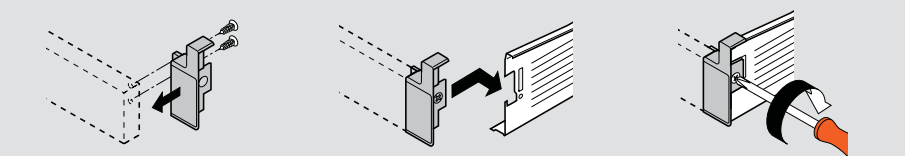


## Components and accessories

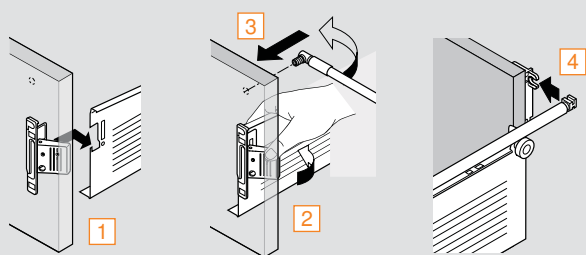
- Adjustable gallery rails
- Rear gallery bracket
- Gallery cross rail
- Single gallery connector
- Double gallery divider
- Double gallery connector



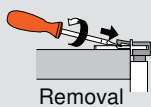
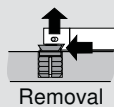
## Interior drawer front assembly



## Drawer front assembly

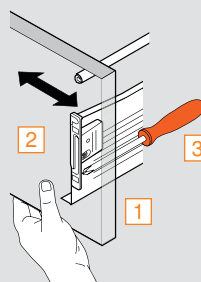


- 1 Insert front bracket
- 2 Snap closed
- 3 Insert gallery
- 4 Snap gallery back



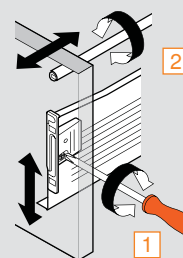
## Drawer front adjustment

### Side adjustment



- 1 Loosen fixing screws
- 2 Adjust front
- 3 Tighten screws

### Height and tilt adjustment

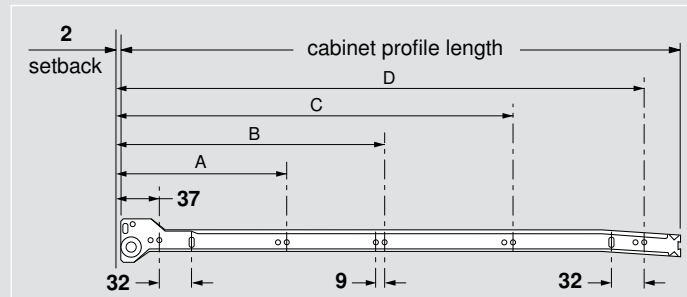
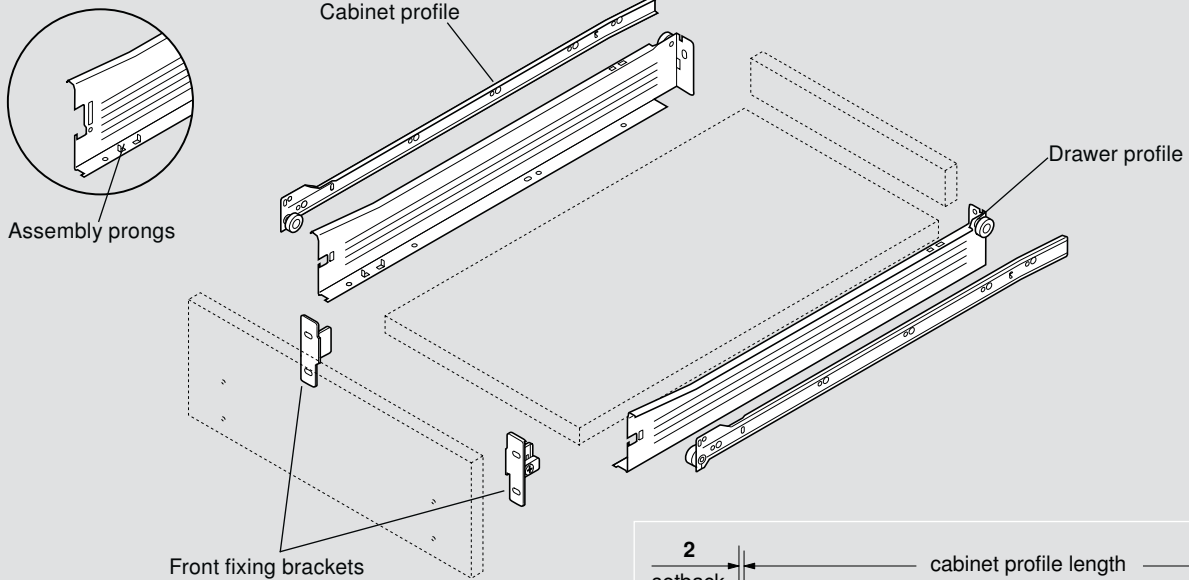


- 1 Adjust height cam
- 2 Turn rail to adjust tilt

# 320N drawer series

## Components

### C15 series

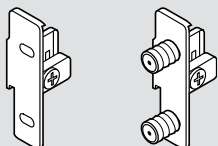


see page 30

### Runner sets (includes cabinet and drawer profiles)

C15 series white	Nominal Length	Min. inside cabinet depth	Nominal length	System screw mounting hole positions			
				A	B	C	D
<b>320N5500C15</b>	22"	<b>557</b> (21-7/8")	<b>550</b> (21-5/8")	<b>165</b>	<b>261</b>	<b>389</b>	<b>517</b>
<b>320N5000C15</b>	20"	<b>507</b> (19-15/16")	<b>500</b> (19-11/16")	<b>165</b>	<b>261</b>	<b>389</b>	<b>453</b>
<b>320N4500C15</b>	18"	<b>457</b> (17-15/16")	<b>450</b> (17-11/16")	<b>165</b>	<b>261</b>	<b>389</b>	—
<b>320N4000C15</b>	16"	<b>407</b> (16")	<b>400</b> (15-3/4")	<b>165</b>	<b>261</b>	<b>357</b>	—
<b>320N3500C15</b>	14"	<b>357</b> (14")	<b>350</b> (13-3/4")	<b>165</b>	<b>261</b>	<b>325</b>	—

### Standard front fixing bracket

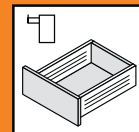


Nickel-plated steel

Part no.

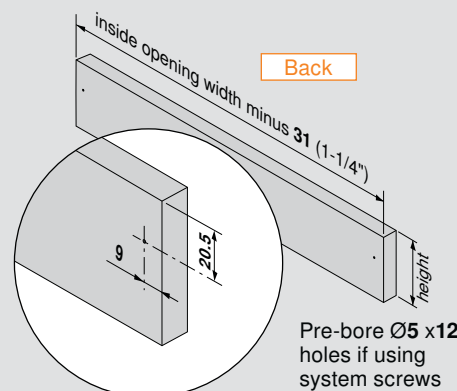
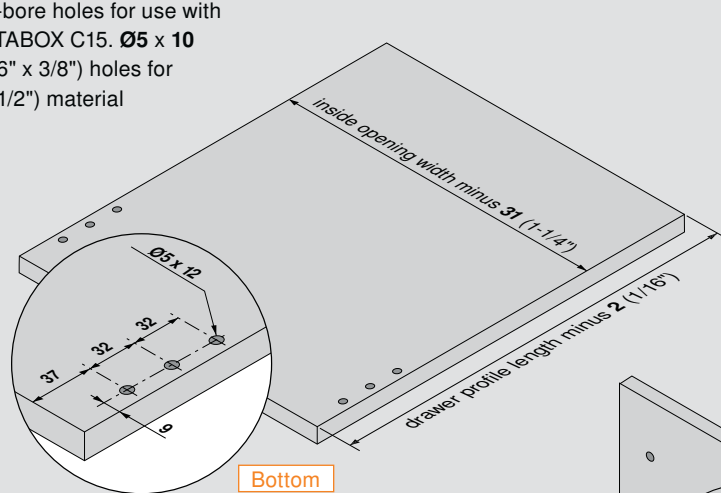
Screw-on	Right	<b>ZSF.1510.04</b>
	Left	<b>ZSF.1510.05</b>
Press-in	Right	<b>ZSF.1610.04</b>
	Left	<b>ZSF.1610.05</b>





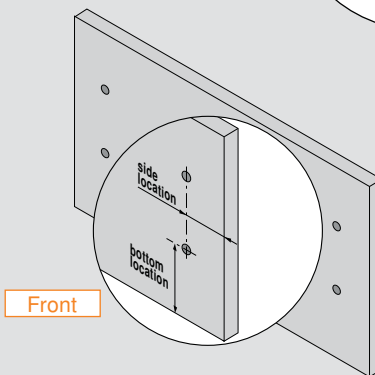
### Specifications

Pre-bore holes for use with METABOX C15.  $\text{Ø}5 \times 10$  (3/16" x 3/8") holes for 13 (1/2") material



Pre-bore  $\text{Ø}5 \times 12$  holes if using system screws

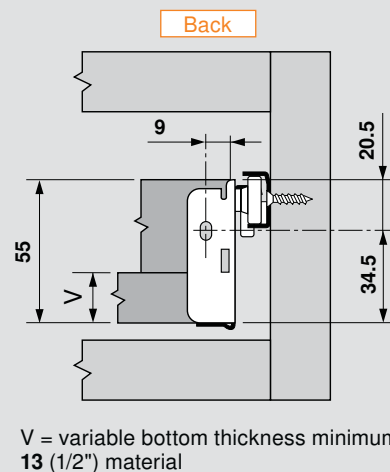
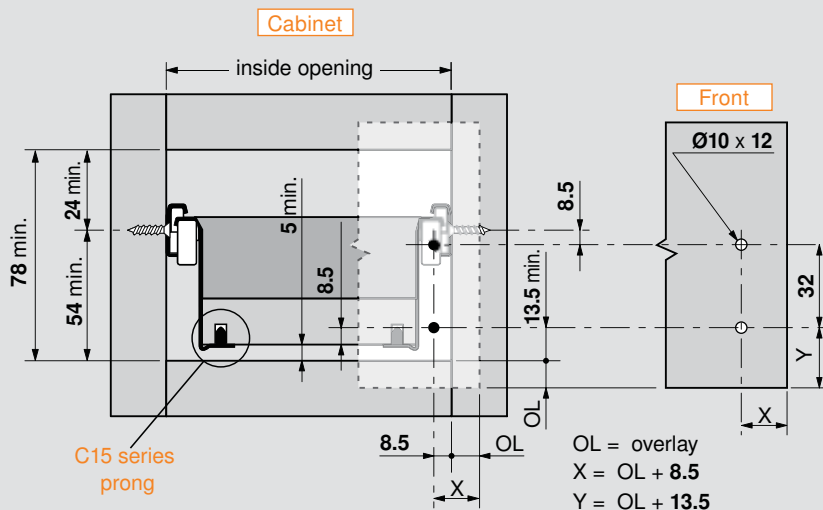
Nominal length	Bottom length
550 (21-5/8")	548 (21-9/16")
500 (19-11/16")	498 (19-5/8")
450 (17-11/16")	448 (17-5/8")
400 (15-3/4")	398 (15-11/16")
350 (13-3/4")	348 (13-11/16")
270 (10-5/8")	268 (10-9/16")



Drawer bottom thickness	Back height
13 (1/2")	42 (1-5/8")
16 (5/8")	39 (1-9/16")
19 (3/4")	36 (1-7/16")

Bore  $\text{Ø}10 \times 12$  ( $\text{Ø}3/8" \times 1/2"$ ) hole for front fixing brackets with dowels (Determine locations from specifications below, or see page 42 for pre-determined overlays)

### Installation specifications



V = variable bottom thickness minimum 13 (1/2") material

Rear bracket for frame cabinet applications

page 36

For gallery rail and BOXSIDE specifications

page 20

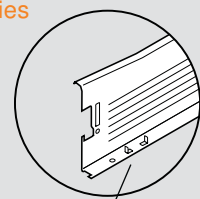
For interior drawer specifications

page 24

# 320M drawer series

## Components

### C15 series



Assembly prongs

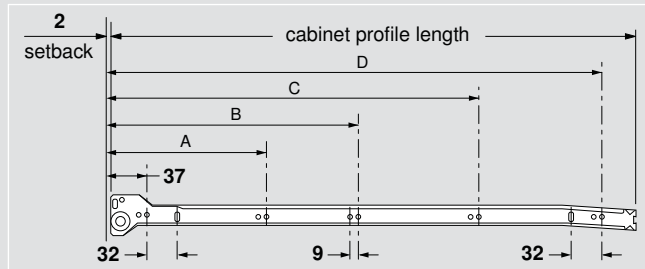
Cabinet profile

Front fixing brackets

Drawer profile



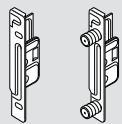
see page 30



### Runner sets (includes cabinet and drawer profiles)

C15 series white	Nominal Length	Min. inside cabinet depth	Nominal length	System screw mounting hole positions			
				A	B	C	D
320M5500C15	22"	557 (21-7/8")	550 (21-5/8")	165	261	389	517
320M5000C15	20"	507 (19-15/16")	500 (19-11/16")	165	261	389	453
320M4500C15	18"	457 (17-15/16")	450 (17-11/16")	165	261	389	—
320M4000C15	16"	407 (16")	400 (15-3/4")	165	261	357	—
320M3500C15	14"	357 (14")	350 (13-3/4")	165	261	325	—
320M2700C15	11"	277 (10-7/8")	270 (10-5/8")	229	—	—	—

### Standard front fixing bracket



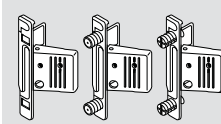
Nickel-plated steel

Part no.

Screw-on	Right	ZSF.1700 R
	Left	ZSF.1700 L
Press-in	Right	ZSF.1800 R
	Left	ZSF.1800 L

### CLIP front fixing bracket

Nickel-plated steel



Screw-on	Right	ZSF.1200 R
	Left	ZSF.1200 L
Press-in	Right	ZSF.1300 R
	Left	ZSF.1300 L
EXPANDO	Right	ZSF.130E R
	Left	ZSF.130E L

### Standard cover cap

Nylon white



**NOTE:** Blum logo cover caps available

ZAA.3500

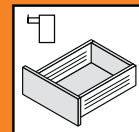
### CLIP cover cap

Nylon white



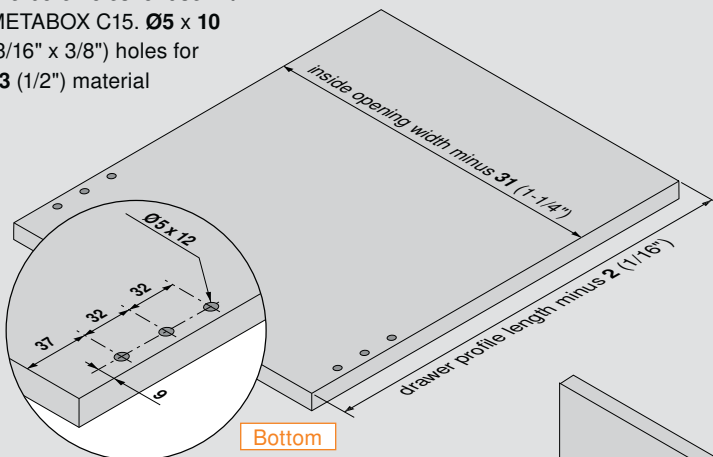
**NOTE:** Blum logo cover caps available

ZAA.3700



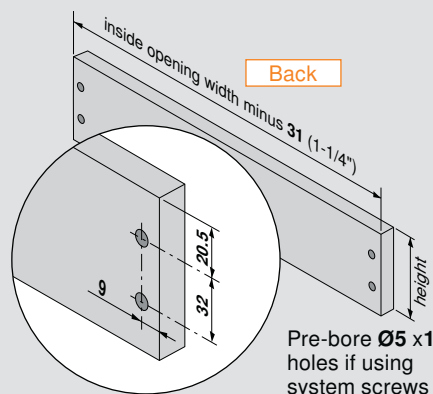
### Specifications

Pre-bore holes for use with METABOX C15.  $\text{Ø}5 \times 10$  (3/16" x 3/8") holes for 13 (1/2") material

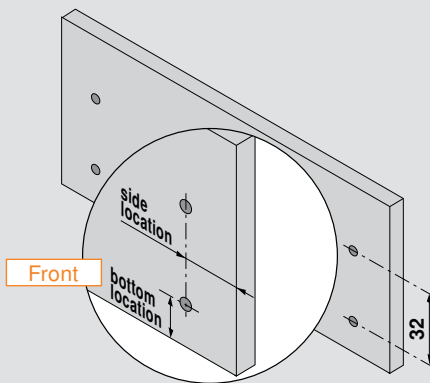


Bottom

Nominal length	Bottom length
550 (21-5/8")	548 (21-9/16")
500 (19-11/16")	498 (19-5/8")
450 (17-11/16")	448 (17-5/8")
400 (15-3/4")	398 (15-11/16")
350 (13-3/4")	348 (13-11/16")
270 (10-5/8")	268 (10-9/16")



Pre-bore  $\text{Ø}5 \times 12$  holes if using system screws

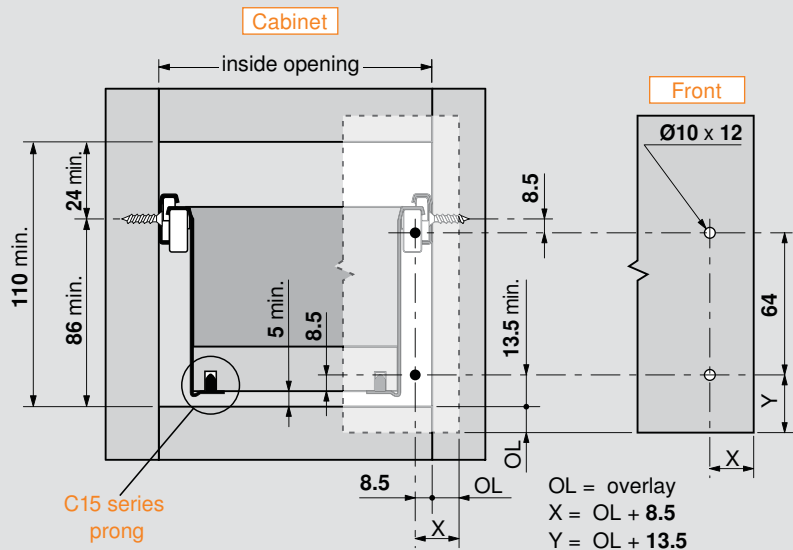


Front

Material thickness	Back height
13 (1/2")	74 (2-15/16")
16 (5/8")	71 (2-13/16")
19 (3/4")	68 (2-11/16")

Bore  $\text{Ø}10 \times 12$  ( $\text{Ø}3/8" \times 1/2"$ ) hole for front fixing brackets with dowels  
(Determine locations from specifications below, or see page 42 for pre-determined overlays)

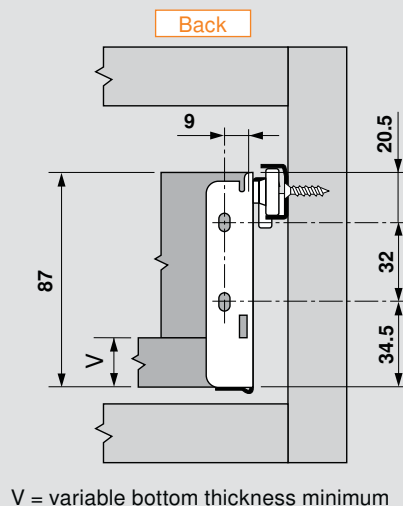
### Installation specifications



Cabinet

Front

OL = overlay  
X = OL + 8.5  
Y = OL + 13.5



Back

V = variable bottom thickness minimum

- Rear bracket for frame cabinet applications
- For gallery rail and BOXSIDE specifications
- For interior drawer specifications

page 36

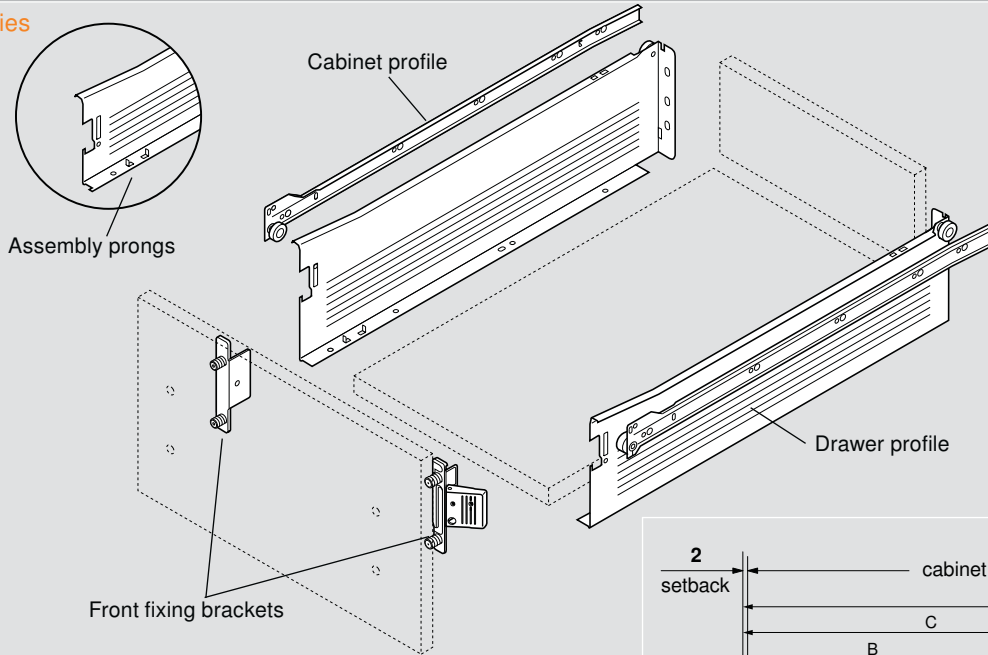
page 20

page 24

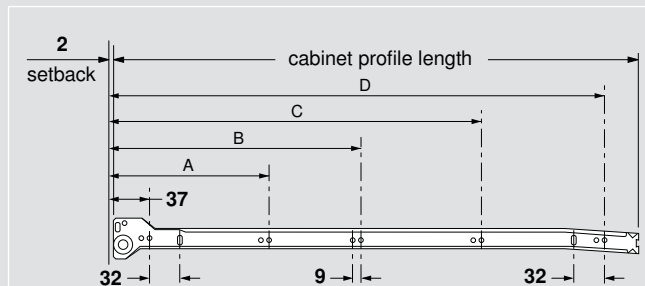
# 320K drawer series

## Components

### C15 series



see page 30



## Runner sets (includes cabinet and drawer profiles)

C15 series white	Nominal Length	Min. inside cabinet depth	Nominal length	System screw mounting hole positions			
				A	B	C	D
<b>320K5500C15</b>	22"	<b>557</b> (21-7/8")	<b>550</b> (21-5/8")	<b>165</b>	<b>261</b>	<b>389</b>	<b>517</b>
<b>320K5000C15</b>	20"	<b>507</b> (19-15/16")	<b>500</b> (19-11/16")	<b>165</b>	<b>261</b>	<b>389</b>	<b>453</b>
<b>320K4500C15</b>	18"	<b>457</b> (17-15/16")	<b>450</b> (17-11/16")	<b>165</b>	<b>261</b>	<b>389</b>	—
<b>320K4000C15</b>	16"	<b>407</b> (16")	<b>400</b> (15-3/4")	<b>165</b>	<b>261</b>	<b>357</b>	—
<b>320K3500C15</b>	14"	<b>357</b> (14")	<b>350</b> (13-3/4")	<b>165</b>	<b>261</b>	—	—

## Standard front fixing bracket

	Nickel-plated steel		Part no.	
	Screw-on	Right		<b>ZSF.1700 R</b>
		Left		<b>ZSF.1700 L</b>
	Press-in	Right		<b>ZSF.1800 R</b>
Left		<b>ZSF.1800 L</b>		

## CLIP front fixing bracket

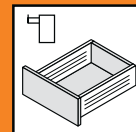
	Nickel-plated steel	Screw-on	Right	<b>ZSF.1200 R</b>
			Left	<b>ZSF.1200 L</b>
	EXPANDO	Press-in	Right	<b>ZSF.1300 R</b>
			Left	<b>ZSF.1300 L</b>
	EXPANDO	Press-in	Right	<b>ZSF.130E R</b>
			Left	<b>ZSF.130E L</b>

## Standard cover cap

Nylon white		<b>NOTE:</b> Blum logo cover caps available
		<b>ZAA.3500</b>

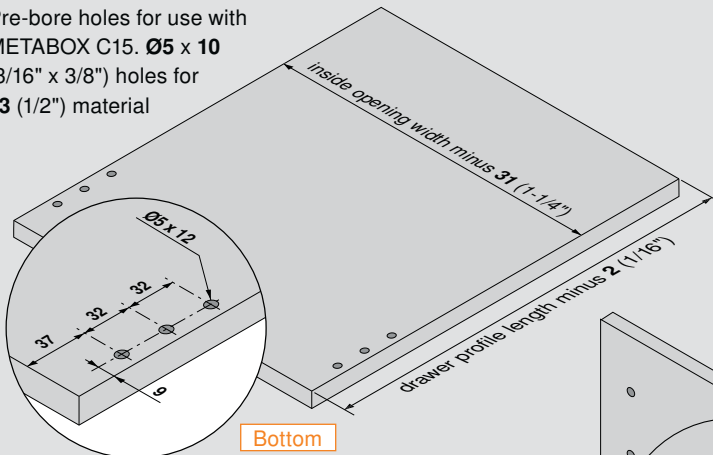
## CLIP cover cap

Nylon white		<b>NOTE:</b> Blum logo cover caps available
		<b>ZAA.3700</b>



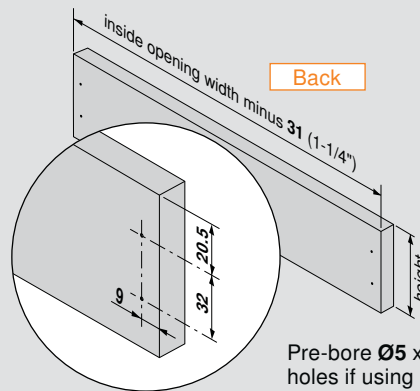
### Specifications

Pre-bore holes for use with METABOX C15.  $\text{Ø}5 \times 10$  (3/16" x 3/8") holes for 13 (1/2") material



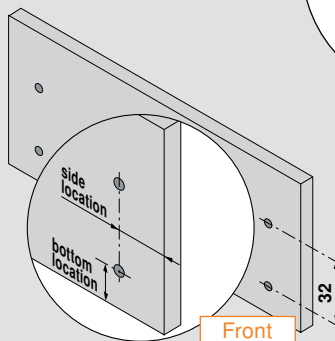
Bottom

Nominal length	Bottom length
550 (21-5/8")	548 (21-9/16")
500 (19-11/16")	498 (19-5/8")
450 (17-11/16")	448 (17-5/8")
400 (15-3/4")	398 (15-11/16")
350 (13-3/4")	348 (13-11/16")



Back

Pre-bore  $\text{Ø}5 \times 12$  holes if using system screws

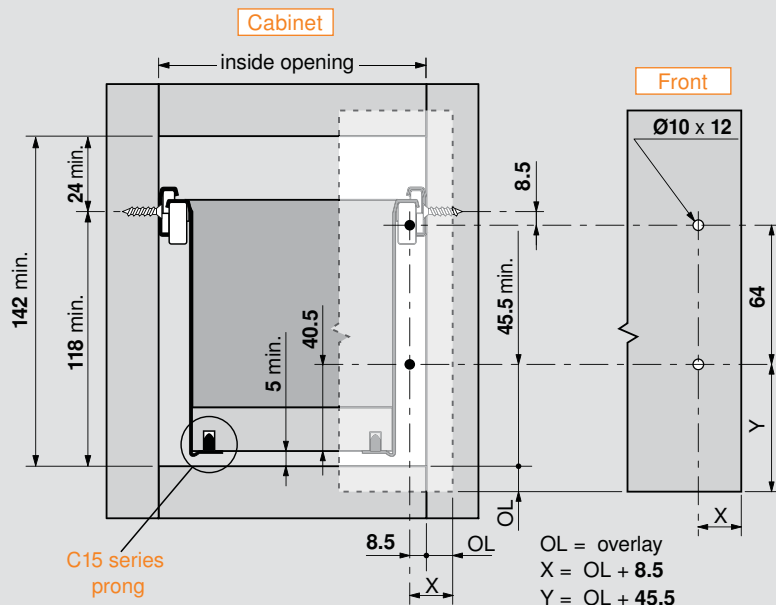


Front

Material thickness	Back height
13 (1/2")	106 (4-3/16")
16 (5/8")	103 (4-1/16")
19 (3/4")	100 (3-15/16")

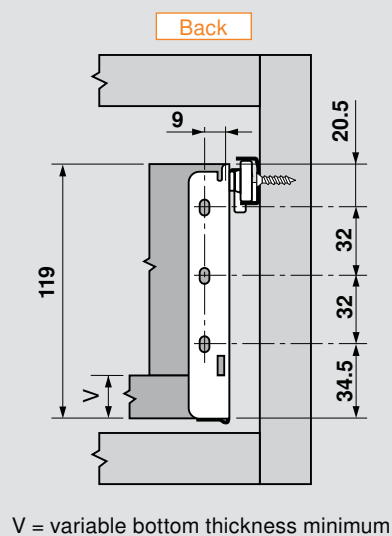
Bore  $\text{Ø}10 \times 12$  ( $\text{Ø}3/8" \times 1/2"$ ) hole for front fixing brackets with dowels  
(Determine locations from specifications below, or see page 42 for pre-determined overlays)

### Installation specifications



C15 series prong

OL = overlay  
X = OL + 8.5  
Y = OL + 45.5



V = variable bottom thickness minimum

Rear bracket for frame cabinet applications

page 36

For gallery rail and BOXSIDE specifications

page 20

For interior drawer specifications

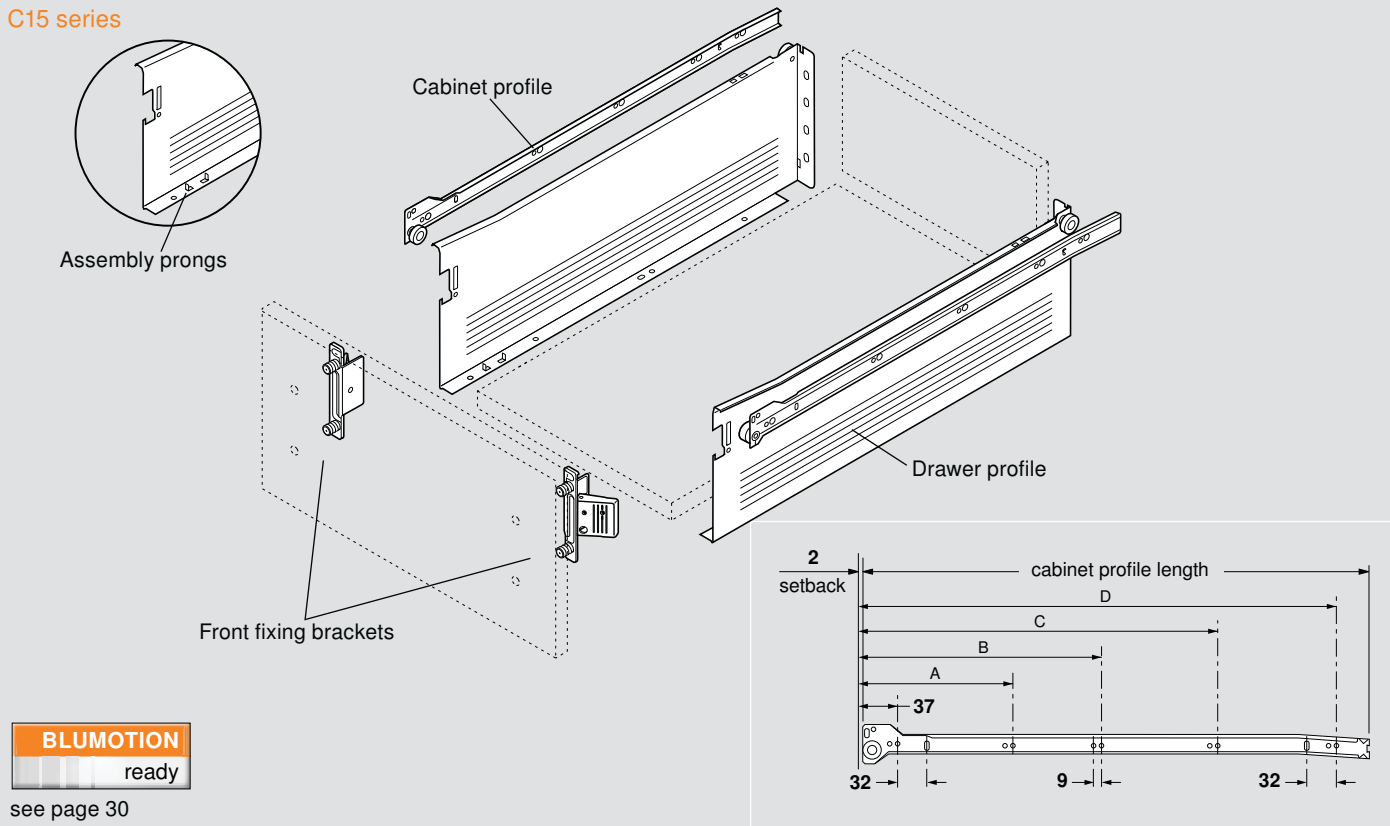
page 24



# 320H drawer series

## Components

### C15 series



see page 30

### Runner sets (includes cabinet and drawer profiles)

C15 series white	Nominal Length	Min. inside cabinet depth	Nominal length	System screw mounting hole positions			
				A	B	C	D
320H5500C15	22"	557 (21-7/8")	550 (21-5/8")	165	261	389	517
320H5000C15	20"	507 (19-15/16")	500 (19-11/16")	165	261	389	453
320H4500C15	18"	457 (17-15/16")	450 (17-11/16")	165	261	389	—
320H4000C15	16"	407 (16")	400 (15-3/4")	165	261	357	—
320H3500C15	14"	357 (14")	350 (13-3/4")	165	261	325	—

### Standard front fixing bracket

	Nickel-plated steel		Part no.
	Screw-on	Right	
		Left	ZSF.1700 L
	Press-in	Right	ZSF.1800 R
		Left	ZSF.1800 L

### CLIP front fixing bracket

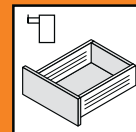
	Nickel-plated steel	Screw-on	Right	ZSF.1200 R
			Left	ZSF.1200 L
		Press-in	Right	ZSF.1300 R
			Left	ZSF.1300 L
		EXPANDO	Right	ZSF.130E R
			Left	ZSF.130E L

### Standard cover cap

Nylon white		<b>NOTE:</b> Blum logo cover caps available
		ZAA.3500

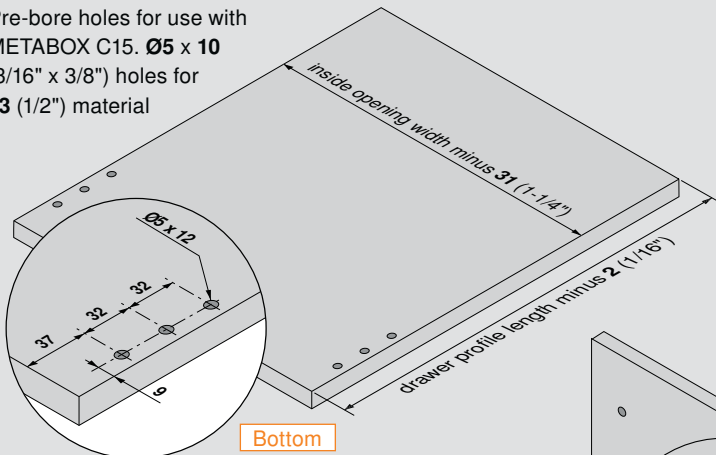
### CLIP cover cap

Nylon white		<b>NOTE:</b> Blum logo cover caps available
		ZAA.3700

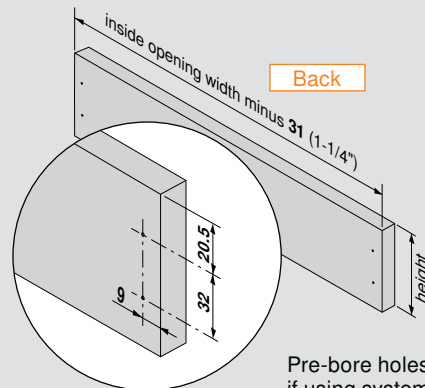


### Specifications

Pre-bore holes for use with METABOX C15.  $\text{Ø}5 \times 10$  (3/16" x 3/8") holes for 13 (1/2") material



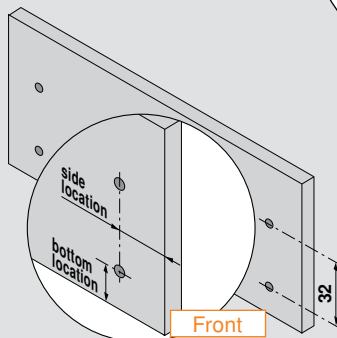
Bottom



Back

Pre-bore holes if using system screws

Nominal length	Bottom length
550 (21-5/8")	548 (21-9/16")
500 (19-11/16")	498 (19-5/8")
450 (17-11/16")	448 (17-5/8")
400 (15-3/4")	398 (15-11/16")
350 (13-3/4")	348 (13-11/16")

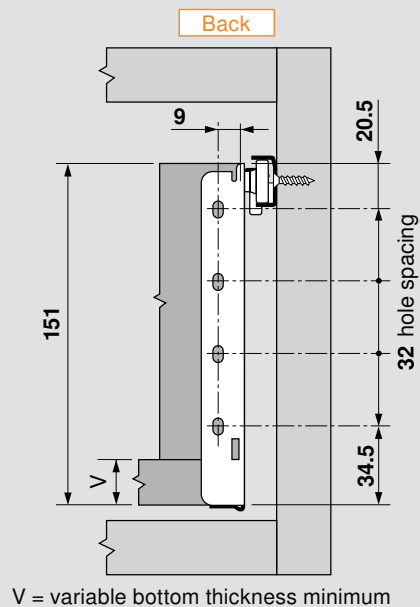
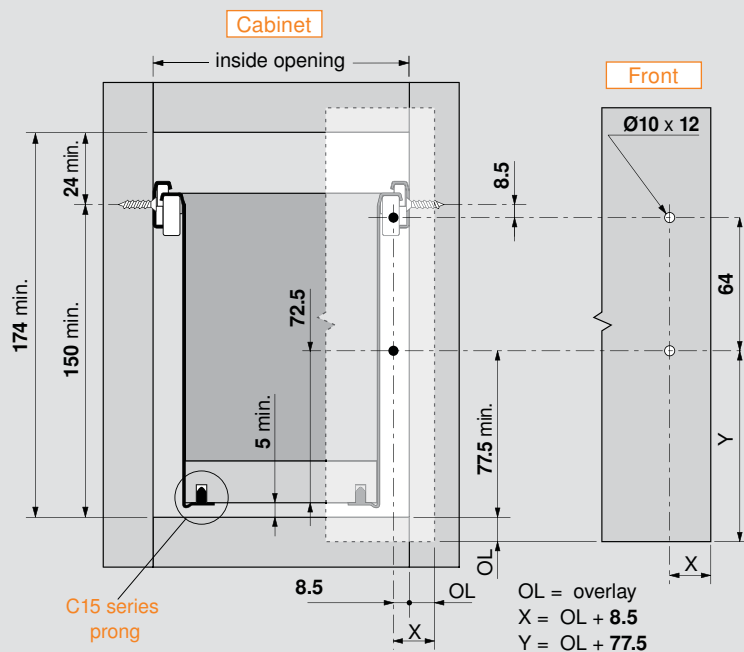


Front

Material thickness	Back height
13 (1/2")	138 (5-7/16")
16 (5/8")	135 (5-5/16")
19 (3/4")	132 (5-3/16")

Bore  $\text{Ø}10 \times 12$  ( $\text{Ø}3/8" \times 1/2"$ ) hole for front fixing brackets with dowels (Determine locations from specifications below, or see page 42 for pre-determined overlays)

### Installation specifications



Rear bracket for frame cabinet applications

page 36

For gallery rail and BOXSIDE specifications

page 20

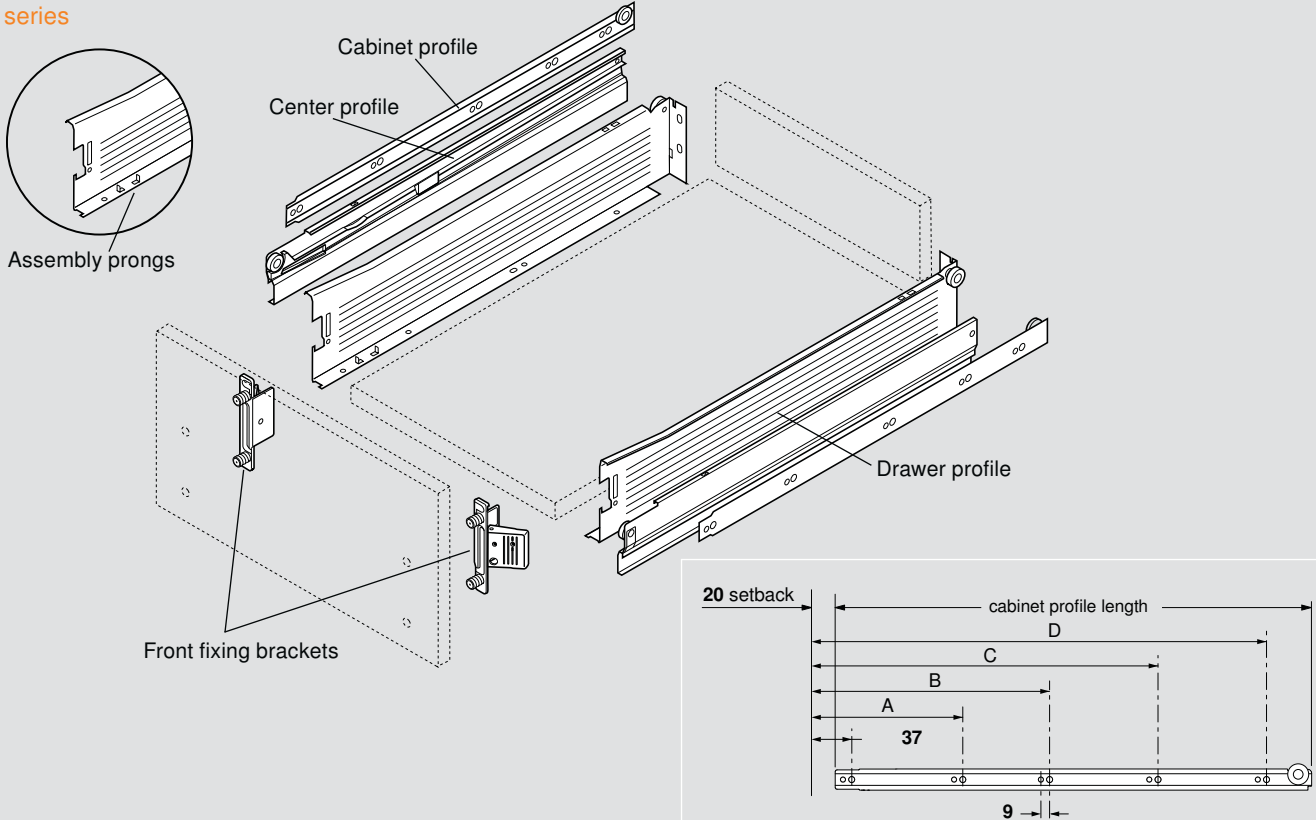
For interior drawer specifications

page 24

# 330M drawer series

## Components

### C15 series



### Runner sets (includes cabinet and drawer profiles)

C15 series white	Nominal Length	Min. inside cabinet depth	Nominal length	System screw mounting hole positions			
				A	B	C	D
<b>330M550PC15</b>	22"	<b>565</b> (22-1/4")	<b>550</b> (21-5/8")	<b>165</b>	<b>261</b>	<b>389</b>	<b>517</b>
<b>330M500PC15</b>	20"	<b>515</b> (20-1/4")	<b>500</b> (19-11/16")	<b>165</b>	<b>261</b>	<b>389</b>	<b>453</b>
<b>330M450PC15</b>	18"	<b>456</b> (18-5/16")	<b>450</b> (17-11/16")	<b>165</b>	<b>261</b>	<b>389</b>	—
<b>330M400PC15</b>	16"	<b>415</b> (16-5/16")	<b>400</b> (15-3/4")	<b>165</b>	<b>261</b>	<b>357</b>	—

### Standard front fixing bracket

	Nickel-plated steel		Part no.
		Right	
		Left	<b>ZSF.1700 L</b>
		Right	<b>ZSF.1800 R</b>
		Left	<b>ZSF.1800 L</b>

### CLIP front fixing bracket

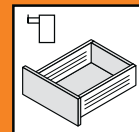
	Nickel-plated steel		Right	<b>ZSF.1200 R</b>
	Screw-on		Left	<b>ZSF.1200 L</b>
		Press-in	Right	<b>ZSF.1300 R</b>
	EXPANDO		Left	<b>ZSF.1300 L</b>
		EXPANDO	Right	<b>ZSF.130E R</b>
	EXPANDO		Left	<b>ZSF.130E L</b>

### Standard cover cap

Nylon white		<b>NOTE:</b> Blum logo cover caps available
		<b>ZAA.3500</b>

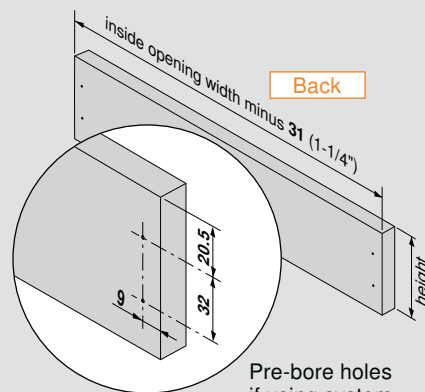
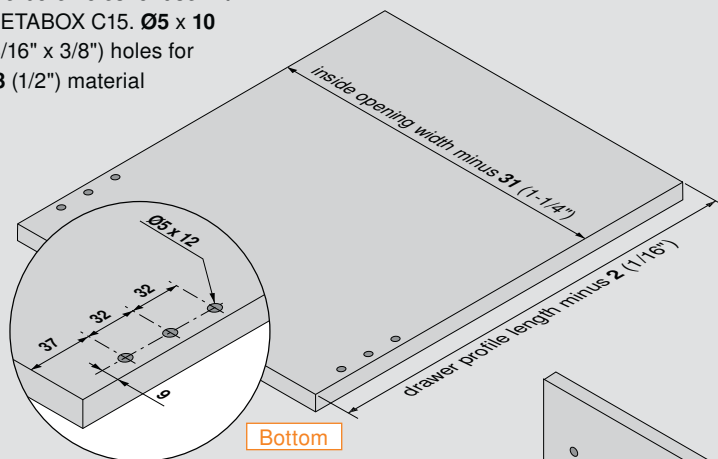
### CLIP cover cap

Nylon white		<b>NOTE:</b> Blum logo cover caps available
		<b>ZAA.3700</b>



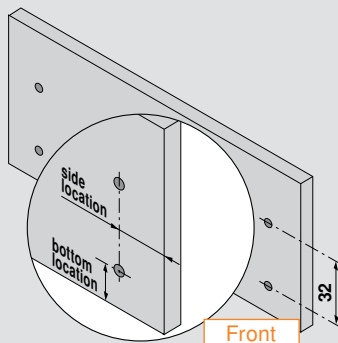
### Specifications

Pre-bore holes for use with METABOX C15.  $\text{Ø}5 \times 10$  (3/16" x 3/8") holes for 13 (1/2") material



Pre-bore holes if using system screws

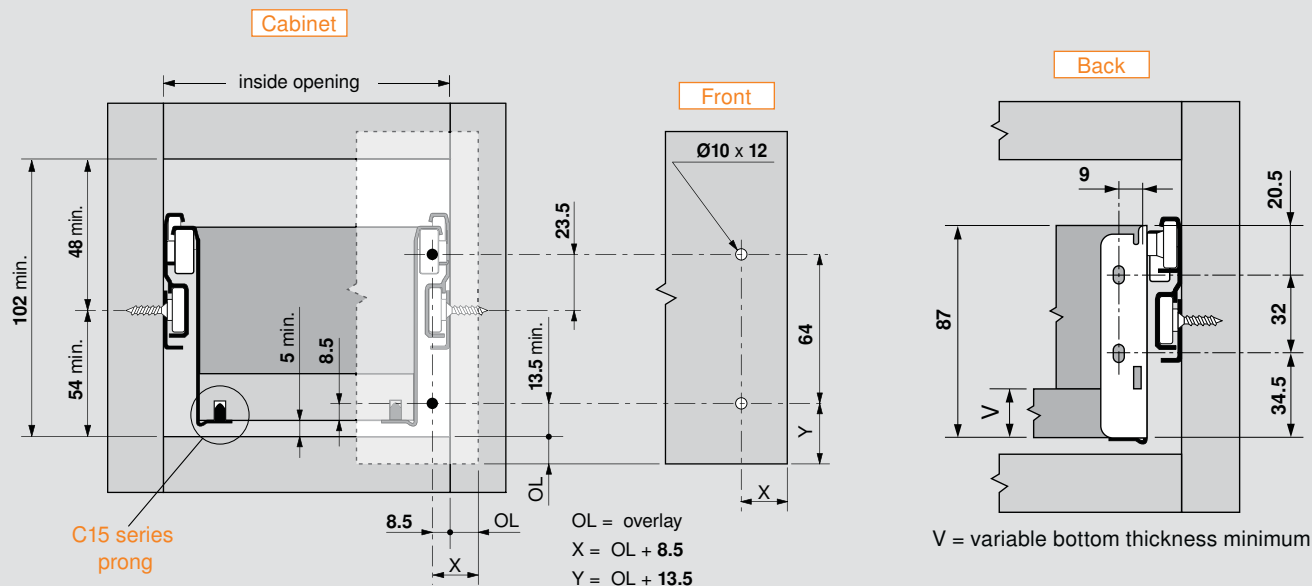
Nominal length	Bottom length
550 (21-5/8")	548 (21-9/16")
500 (19-11/16")	498 (19-5/8")
450 (17-11/16")	448 (17-5/8")
400 (15-3/4")	398 (15-11/16")



Material thickness	Back height
13 (1/2")	74 (2-15/16")
16 (5/8")	71 (2-13/16")
19 (3/4")	68 (2-11/16")

Bore  $\text{Ø}10 \times 12$  ( $\text{Ø}3/8" \times 1/2"$ ) hole for front fixing brackets with dowels  
(Determine locations from specifications below, or see page 38 for pre-determined overlays)

### Installation specifications



For gallery rail and BOXSIDE specifications

page 20

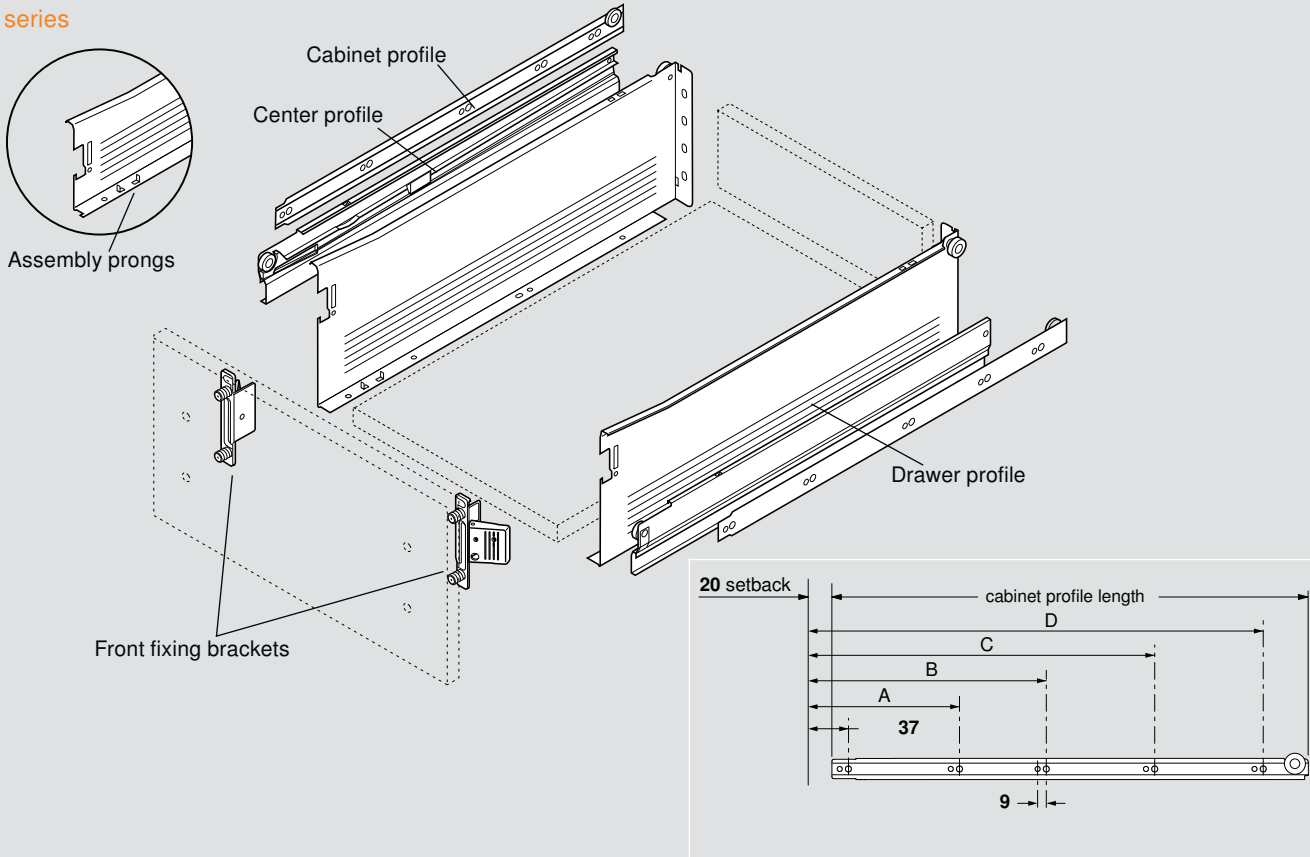
For interior drawer specifications

page 24

# 330H drawer series

## Components

### C15 series



### Runner sets (includes cabinet and drawer profiles)

C15 series white	Nominal Length	Min. inside cabinet depth	Nominal length	System screw mounting hole positions			
				A	B	C	D
<b>330H550PC15</b>	22"	<b>565</b> (22-1/4")	<b>550</b> (21-5/8")	<b>165</b>	<b>261</b>	<b>389</b>	<b>517</b>
<b>330H500PC15</b>	20"	<b>515</b> (20-1/4")	<b>500</b> (19-11/16")	<b>165</b>	<b>261</b>	<b>389</b>	<b>453</b>
<b>330H450PC15</b>	18"	<b>456</b> (18-5/16")	<b>450</b> (17-11/16")	<b>165</b>	<b>261</b>	<b>389</b>	—
<b>330H400PC15</b>	16"	<b>415</b> (16-5/16")	<b>400</b> (15-3/4")	<b>165</b>	<b>261</b>	<b>357</b>	—

### Standard front fixing bracket

	Nickel-plated steel		Part no.	
		Right		<b>ZSF.1700 R</b>
		Left		<b>ZSF.1700 L</b>
		Right		<b>ZSF.1800 R</b>
		Left		<b>ZSF.1800 L</b>

### CLIP front fixing bracket

	Nickel-plated steel		Part no.	
		Right		<b>ZSF.1200 R</b>
		Left		<b>ZSF.1200 L</b>
		Right		<b>ZSF.1300 R</b>
		Left		<b>ZSF.1300 L</b>
	EXPANDO	Right		<b>ZSF.130E R</b>
	Left	<b>ZSF.130E L</b>		

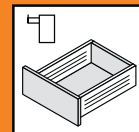
### Standard cover cap

Nylon white		<b>NOTE:</b> Blum logo cover caps available
		<b>ZAA.3500</b>

### CLIP cover cap

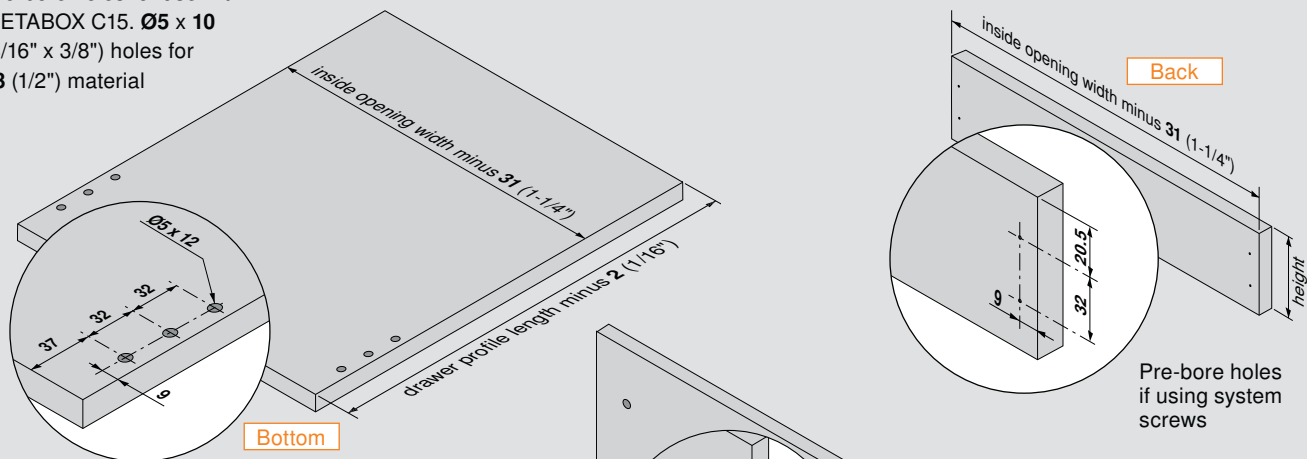
Nylon white		<b>NOTE:</b> Blum logo cover caps available
		<b>ZAA.3700</b>





### Specifications

Pre-bore holes for use with METABOX C15.  $\text{Ø}5 \times 10$  (3/16" x 3/8") holes for 13 (1/2") material



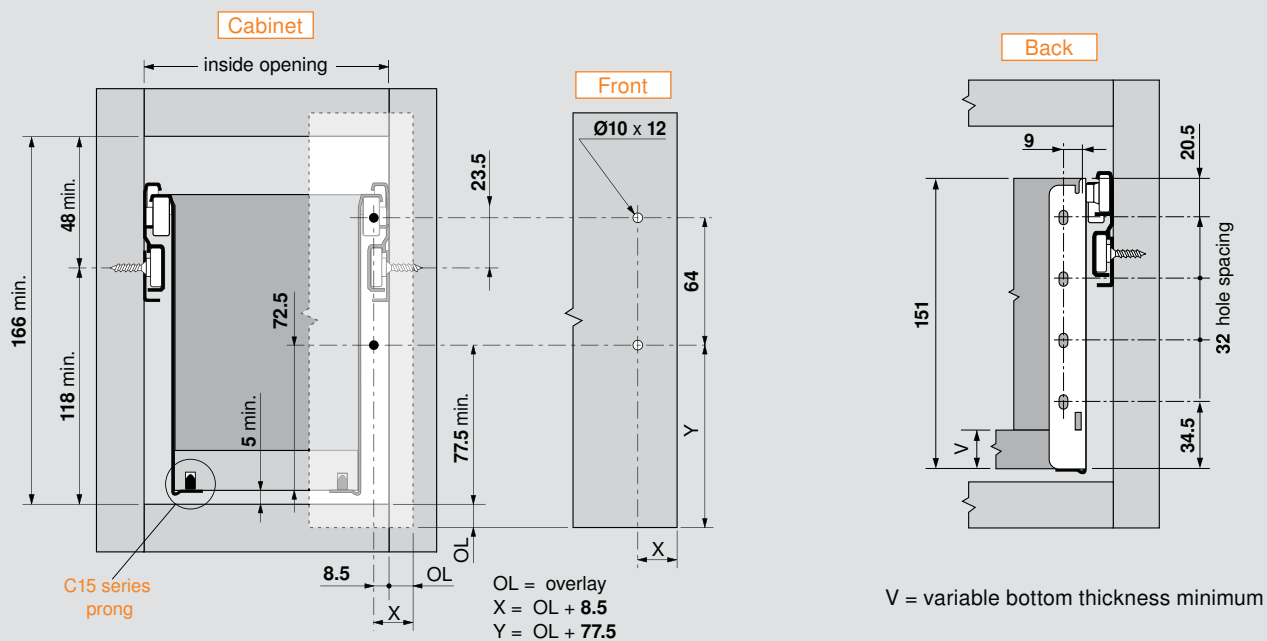
Pre-bore holes if using system screws

Nominal length	Bottom length
550 (21-5/8")	548 (21-9/16")
500 (19-11/16")	498 (19-5/8")
450 (17-11/16")	448 (17-5/8")
400 (15-3/4")	398 (15-11/16")

Material thickness	Back height
13 (1/2")	138 (5-7/16")
16 (5/8")	135 (5-5/16")
19 (3/4")	132 (5-3/16")

Bore  $\text{Ø}10 \times 12$  ( $\text{Ø}3/8" \times 1/2"$ ) hole for front fixing brackets with dowels  
(Determine locations from specifications below, or see page 38 for pre-determined overlays)

### Installation specifications



For gallery rail and BOXSIDE specifications

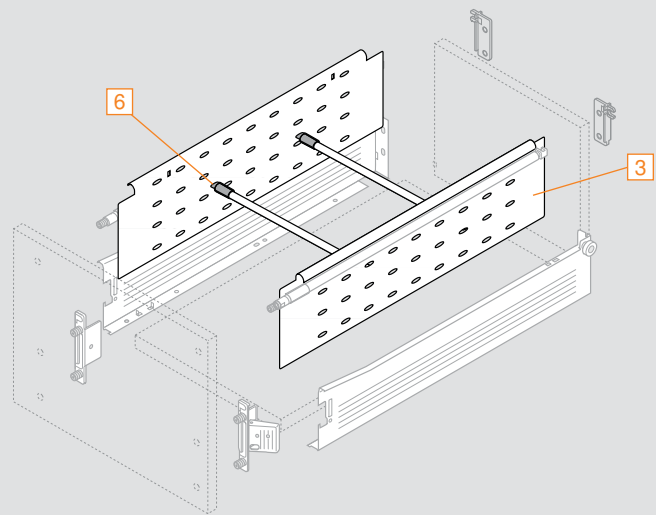
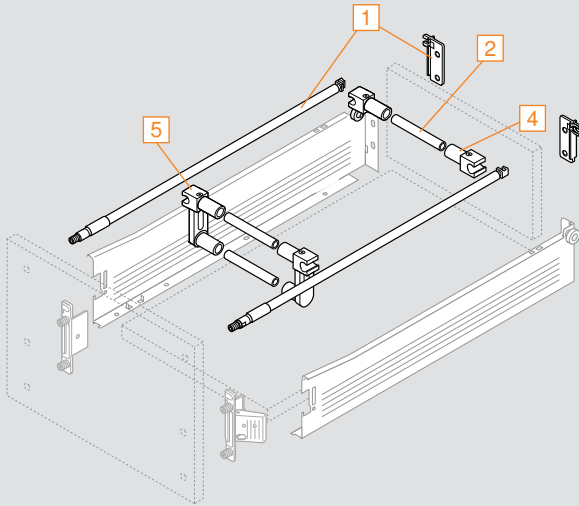
page 20

For interior drawer specifications

page 24

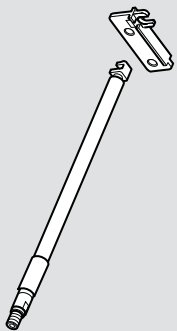
# Gallery rail and BOXSIDE systems

## Gallery components



### INSERTA gallery set

1



#### Set includes:

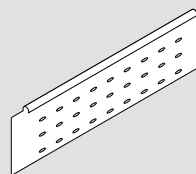
- Adjustable rails (qty 2)
- Rear fixing brackets (qty 2)
- Colors: white

Part no.

400 (16") drawer length	ZRE.371S.ID
450 (18") drawer length	ZRE.421S.ID
500 (20") drawer length	ZRE.471S.ID
550 (22") drawer length	ZRE.521S.ID

### BOXSIDE

3



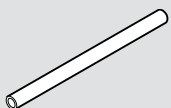
Height = 128 (5-1/32")  
Color: white

Part no.

400 (16") drawer length	Z36H367SE01
450 (18") drawer length	Z36H417SE01
500 (20") drawer length	Z36H467SE01
550 (22") drawer length	Z36H517SE01

### Gallery cross rail

2



- 1104 (44") long, cut to length
- Colors: white
- Length = inside opening width minus 60 (2-3/8")

Part no.

Gallery cross rail	ZRG.1104U
--------------------	-----------

### Gallery connectors

4



Single gallery connector Part no.  
Colors: white ZRU.00E0.01

5

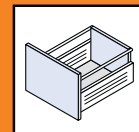


Double gallery connector  
Colors: white ZRU.00Z0.01

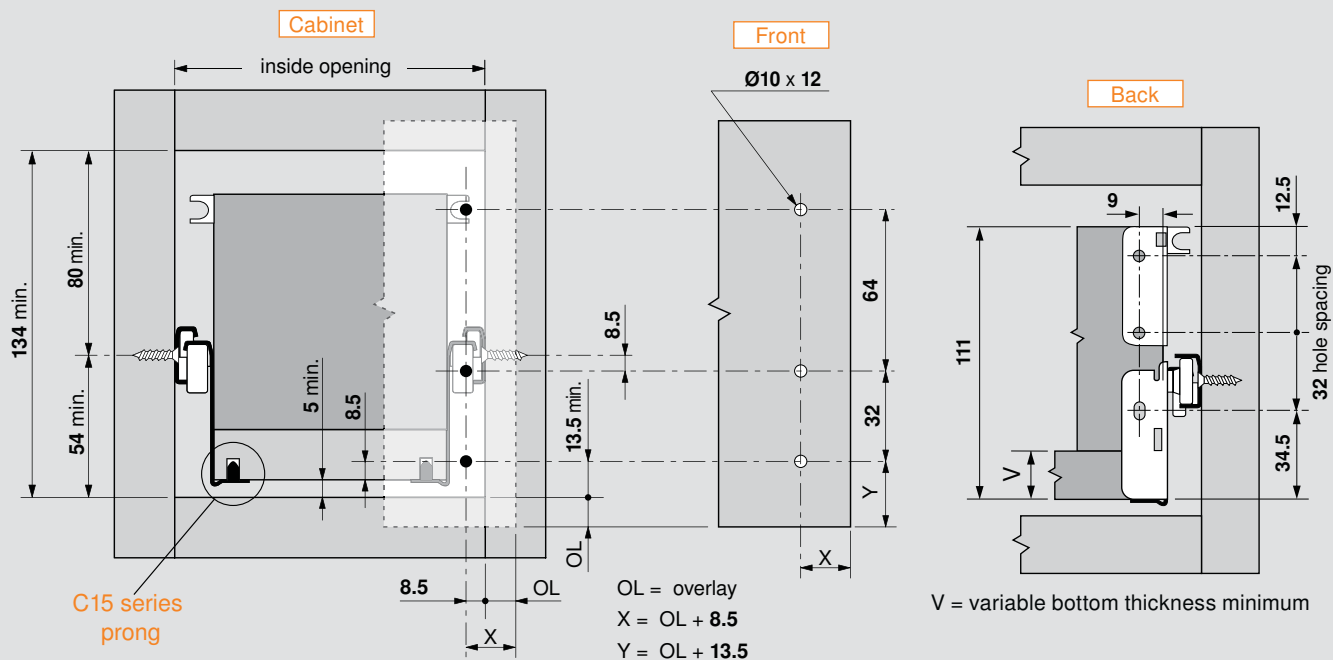
6



Spring connector  
Colors: dust gray ZRU.10B1E

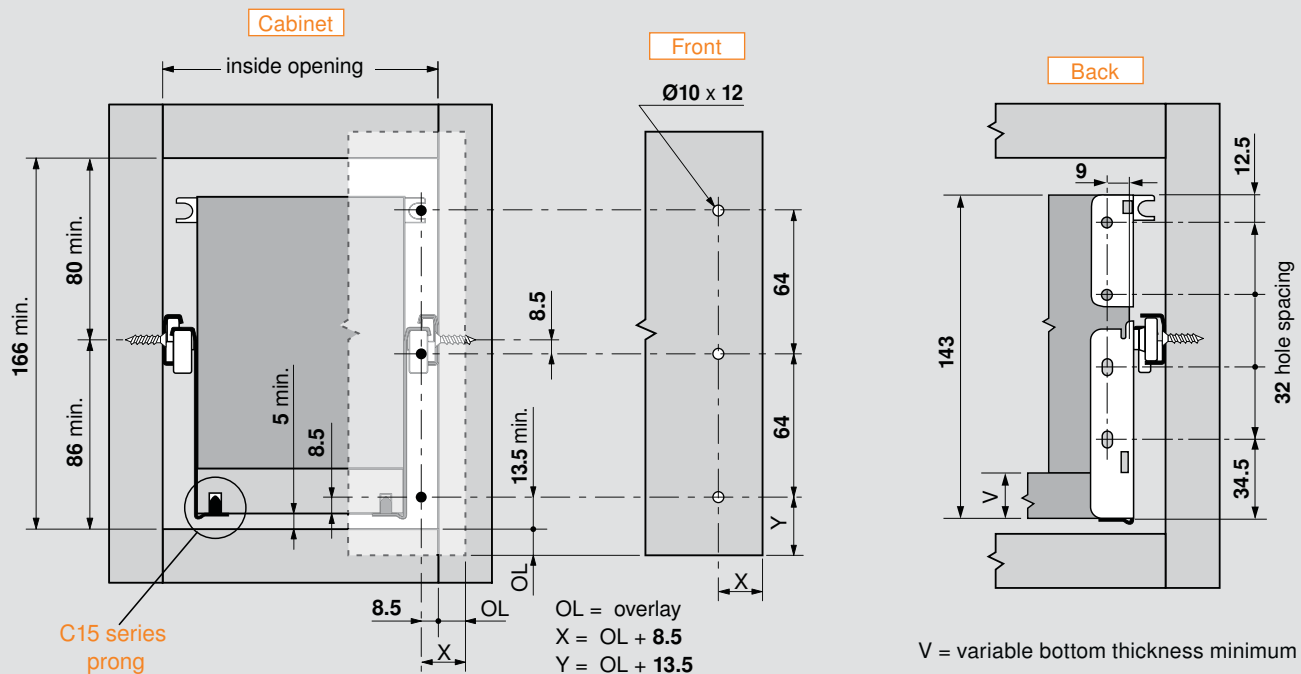


### 320N installation specifications



**NOTE:** For double gallery rail application add 64 (2-1/2") to opening and back height

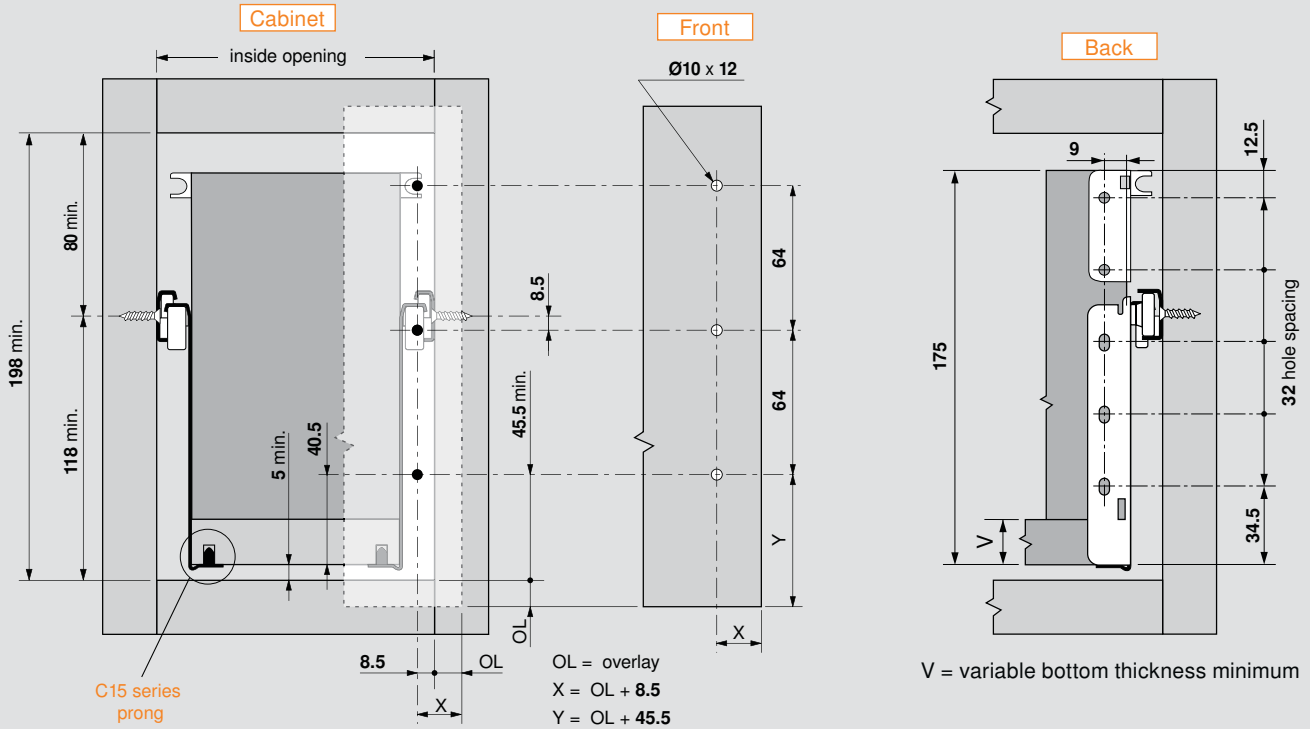
### 320M installation specifications



**NOTE:** For double gallery rail application add 64 (2-1/2") to opening and back height

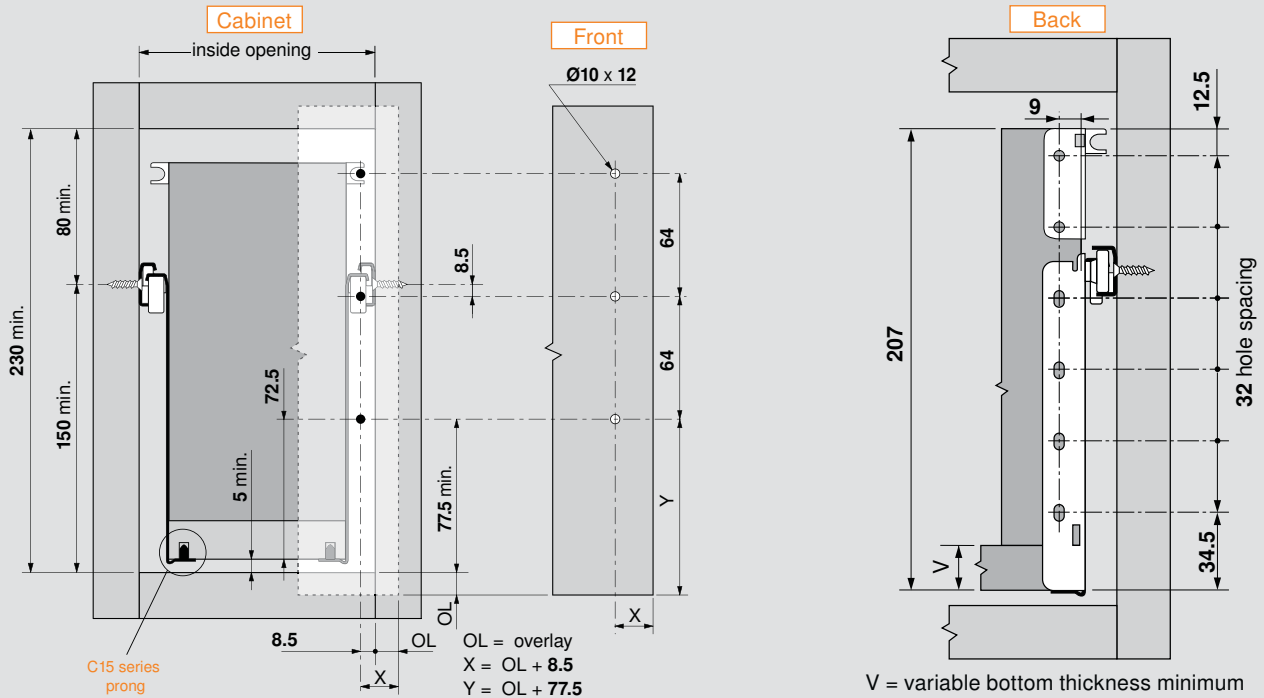
# Gallery rail and BOXSIDE systems

## 320K installation specifications

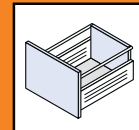


**NOTE:** For double gallery rail application add 64 (2-1/2") to opening and back height

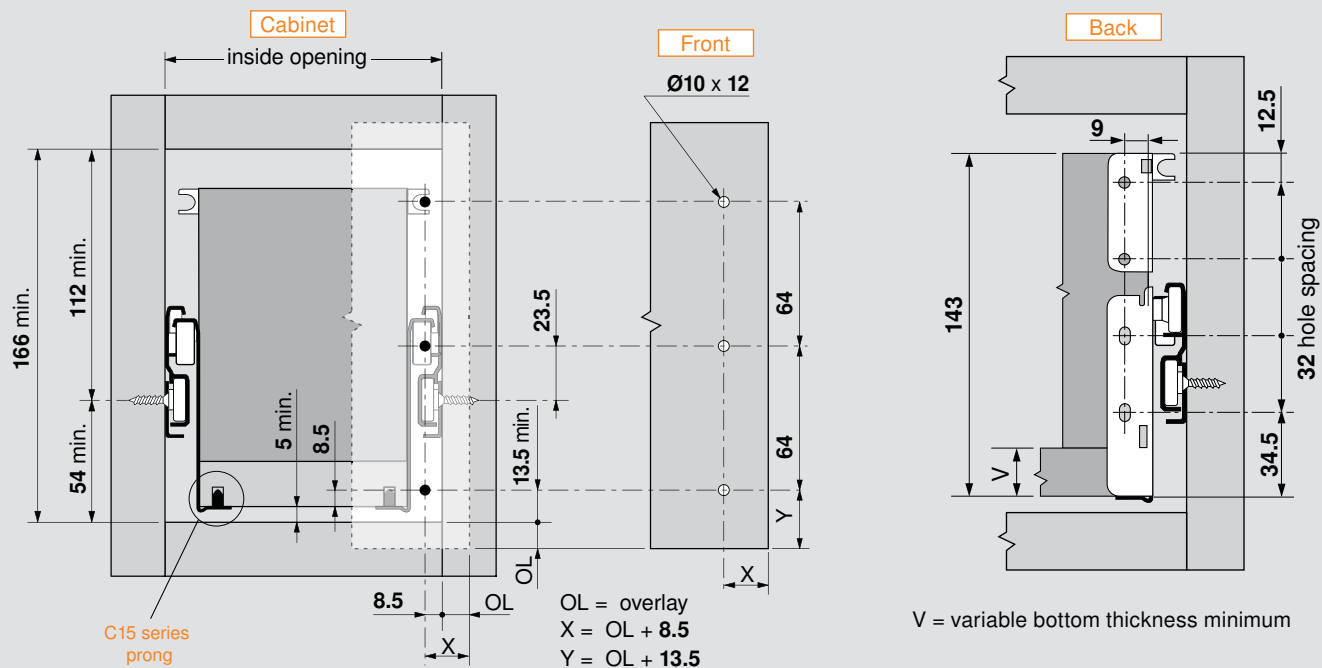
## 320H installation specifications



**NOTE:** For double gallery rail application add 64 (2-1/2") to opening and back height

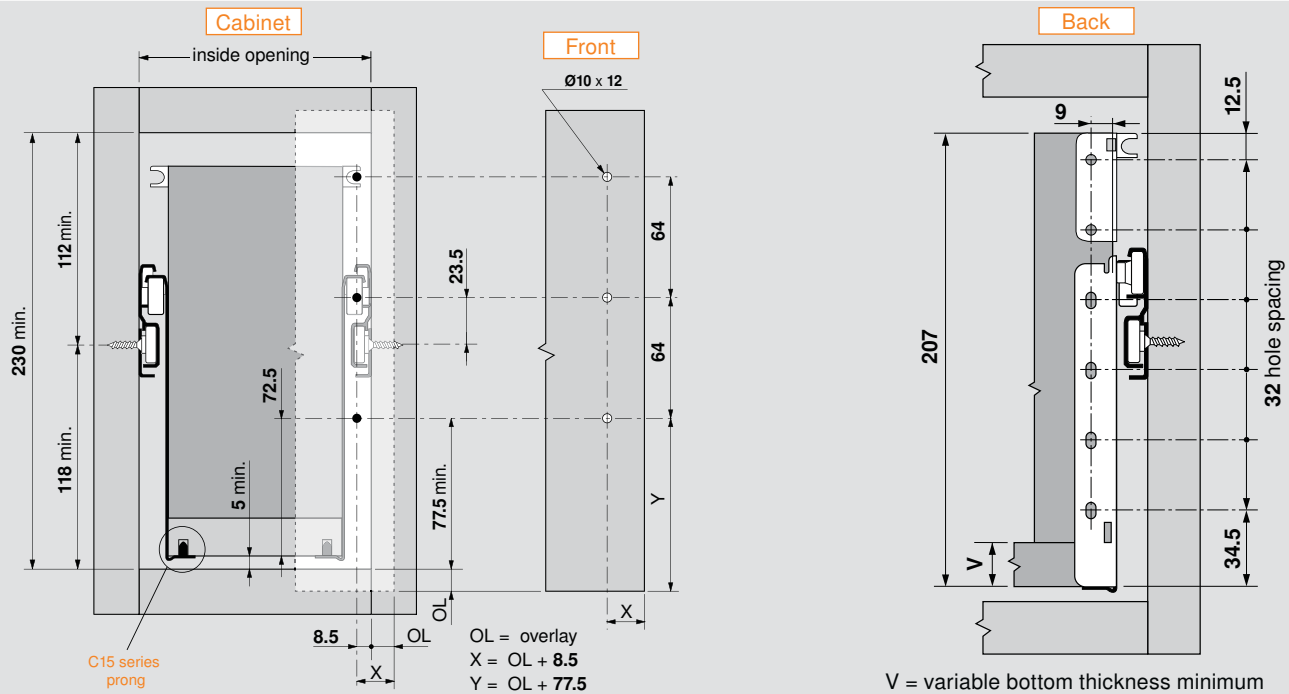


### 330M installation specifications



**NOTE:** For double gallery rail application add 64 (2-1/2") to opening and back height

### 330H installation specifications

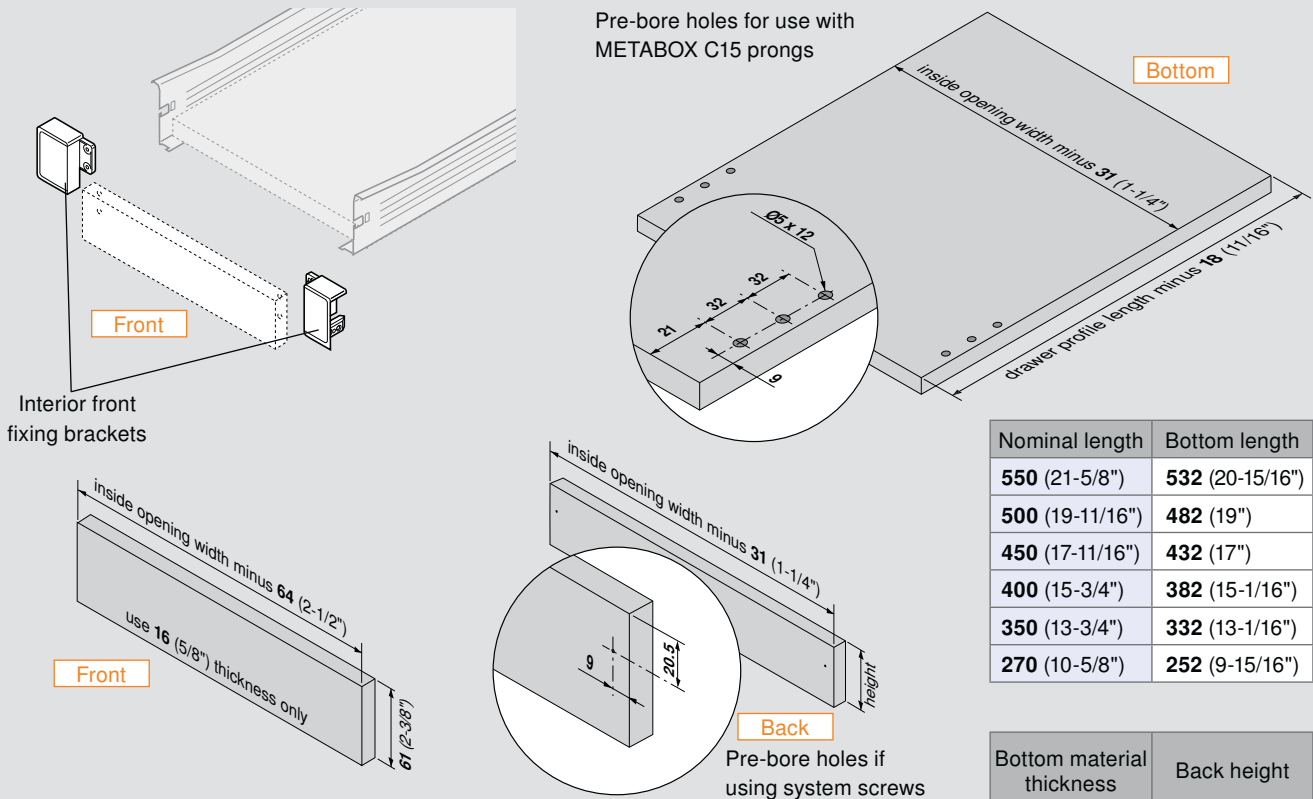


**NOTE:** For double gallery rail application add 64 (2-1/2") to opening and back height



# 320N interior drawer application

## Components



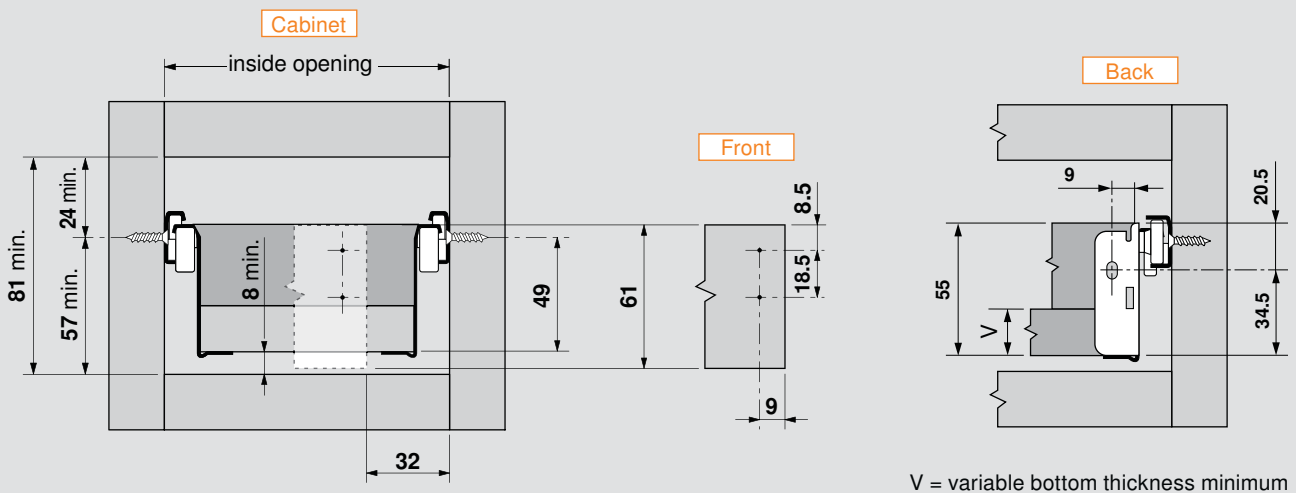
Nominal length	Bottom length
550 (21-5/8")	532 (20-15/16")
500 (19-11/16")	482 (19")
450 (17-11/16")	432 (17")
400 (15-3/4")	382 (15-1/16")
350 (13-3/4")	332 (13-1/16")
270 (10-5/8")	252 (9-15/16")

Bottom material thickness	Back height
13 (1/2")	42 (1-5/8")
16 (5/8")	39 (1-9/16")
19 (3/4")	36 (1-7/16")

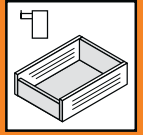
## Screw-on interior front fixing bracket

Nylon	White	Part no.
	Right	ZIF.3010.02
	Left	ZIF.3010.03

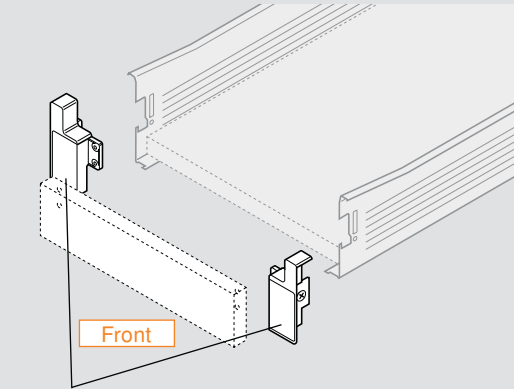
## Installation specifications



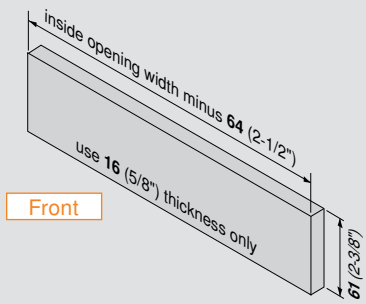
# 320M interior drawer application



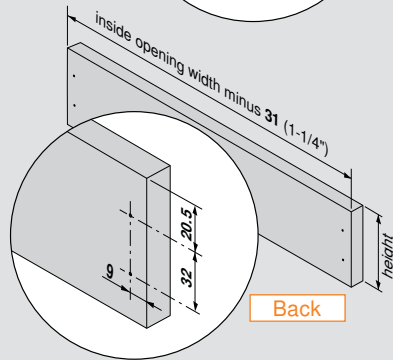
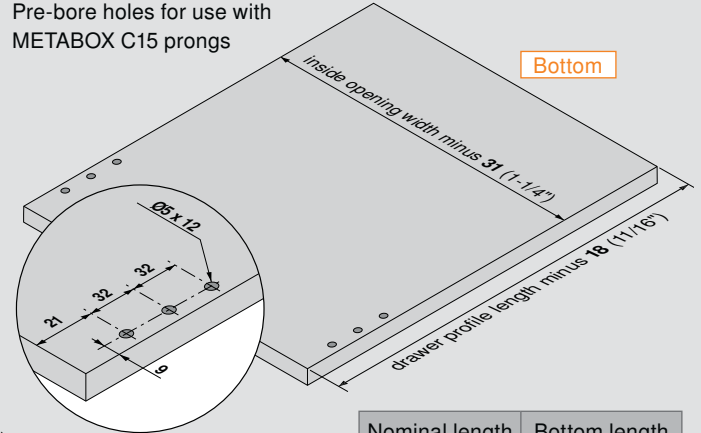
## Components



Interior front fixing brackets



Pre-bore holes for use with METABOX C15 prongs



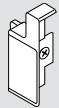
Pre-bore holes if using system screws

Nominal length	Bottom length
550 (21-5/8")	532 (5-7/16")
500 (19-11/16")	482 (19")
450 (17-11/16")	432 (17")
400 (15-3/4")	382 (15-1/16")
350 (13-3/4")	332 (13-1/16")
270 (10-5/8")	252 (9-15/16")

Bottom material thickness	Back height
13 (1/2")	74 (2-15/16")
16 (5/8")	71 (2-15/16")
19 (3/4")	68 (2-11/16")

## Screw-on interior front fixing bracket

Nylon



White

Part no.

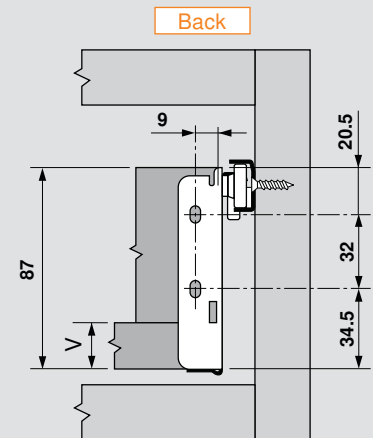
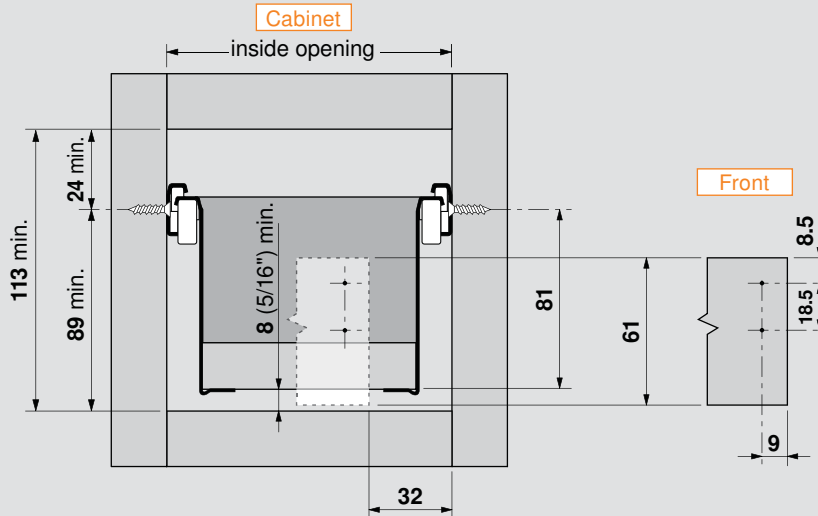
Right

ZIF.3000.02

Left

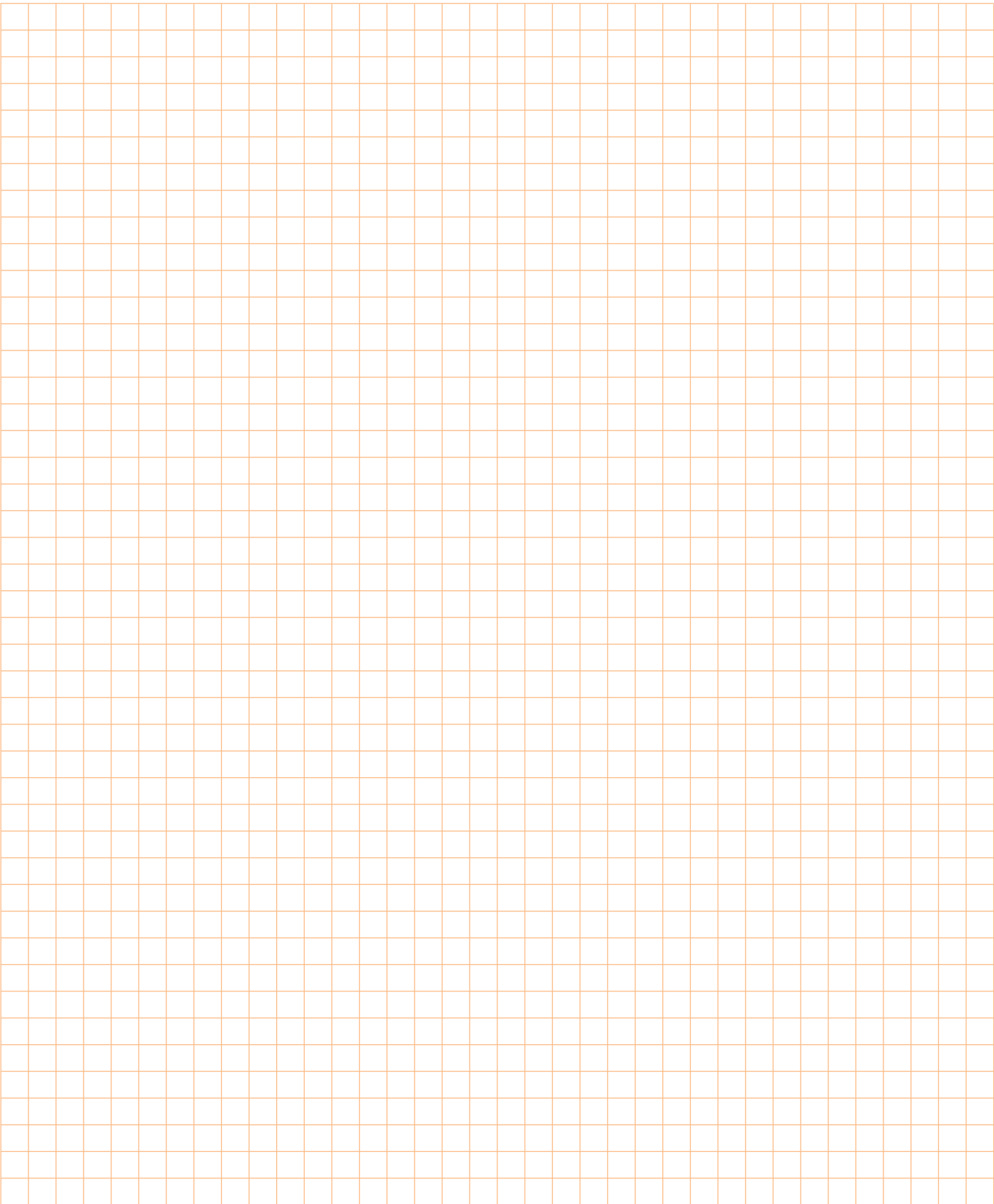
ZIF.3000.03

## Installation specifications

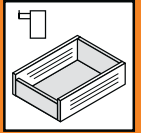


V = variable bottom thickness minimum

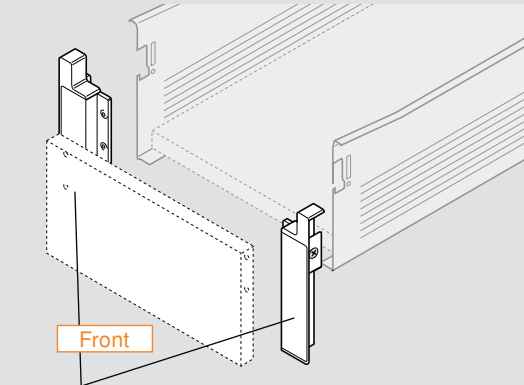
# Notes



# 320H interior drawer application

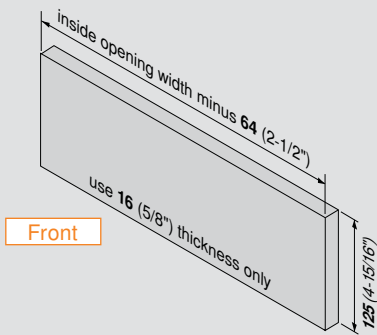


## Components



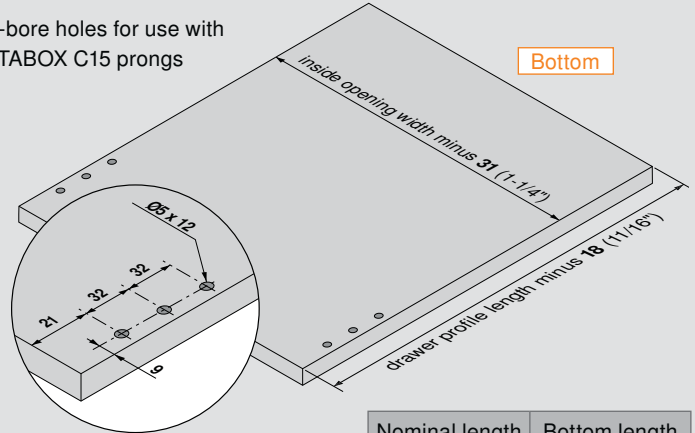
Front

Interior front fixing brackets

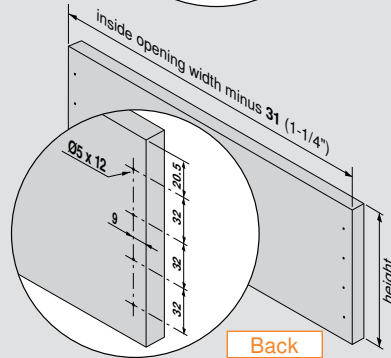


Front

Pre-bore holes for use with METABOX C15 prongs



Bottom



Back

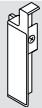
Pre-bore holes if using system screws

Nominal length	Bottom length
550 (21-5/8")	532 (5-7/16")
500 (19-11/16")	482 (19")
450 (17-11/16")	432 (17")
400 (15-3/4")	382 (15-1/16")
350 (13-3/4")	332 (13-1/16")

Bottom material thickness	Back height
13 (1/2")	138 (5-7/16")
16 (5/8")	135 (5-5/16")
19 (3/4")	132 (5-3/16")

## Screw-on interior front fixing bracket

Nylon



White

Part no.

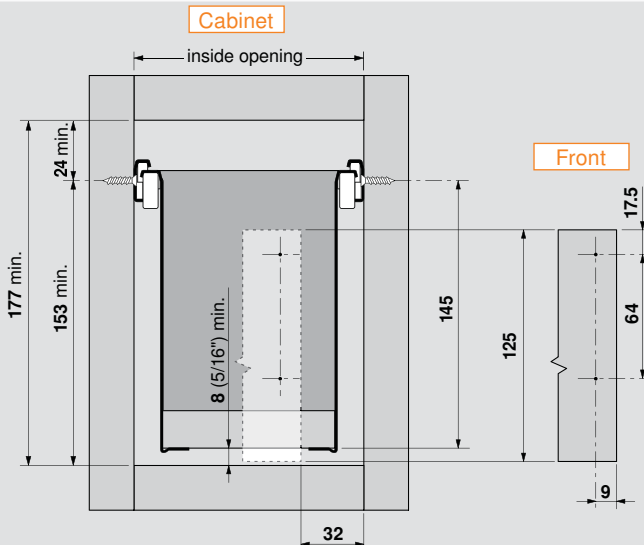
Right

ZIF.3050 R

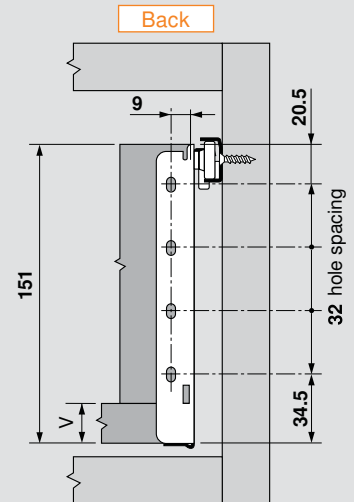
Left

ZIF.3050 L

## Installation specifications



Front

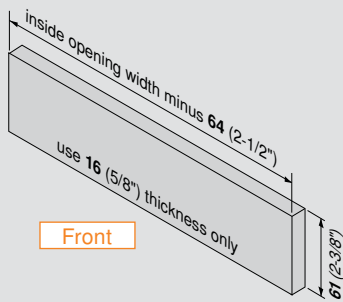
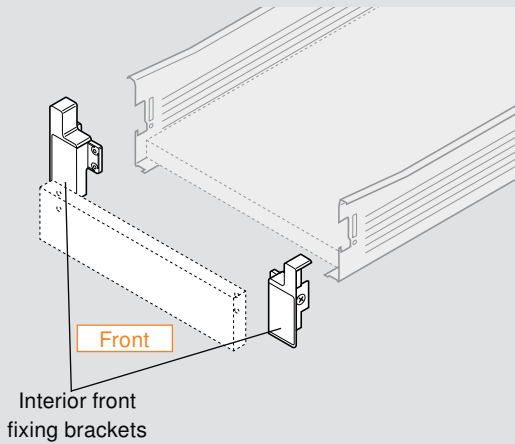


Back

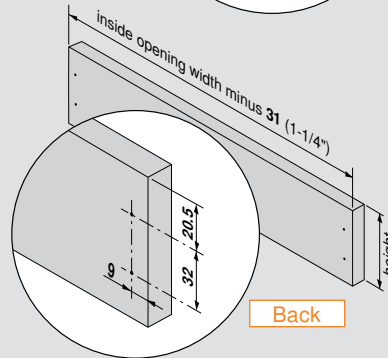
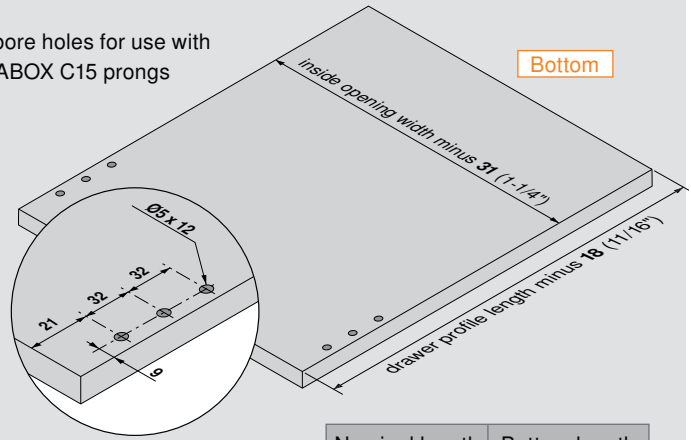
V = variable bottom thickness minimum

# 330M interior drawer application

## Components



Pre-bore holes for use with METABOX C15 prongs



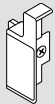
Pre-bore holes if using system screws

Nominal length	Bottom length
550 (21-5/8")	532 (20-15/16")
500 (19-11/16")	482 (19")
450 (17-11/16")	432 (17")
400 (15-3/4")	382 (15-1/16")

Bottom material thickness	Back height
13 (1/2")	74 (2-15/16")
16 (5/8")	71 (2-13/16")
19 (3/4")	68 (3-11/16")

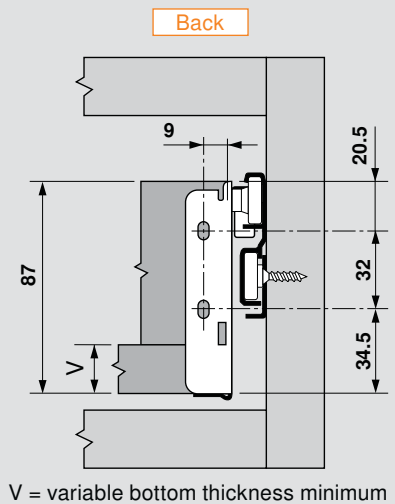
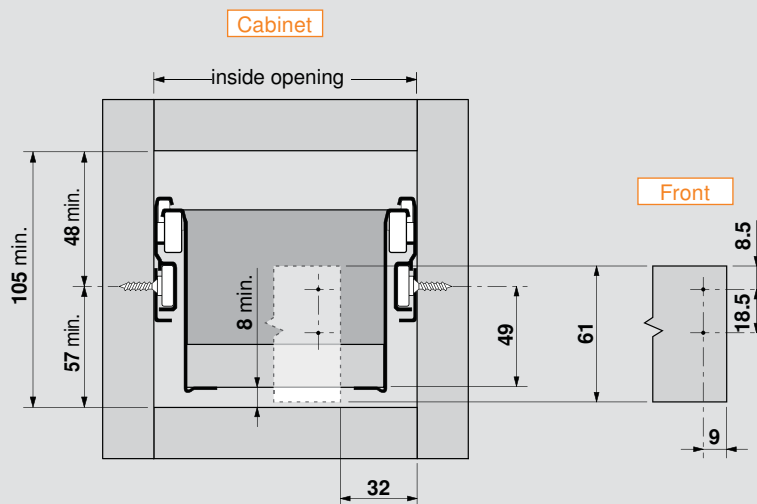
## Screw-on interior front fixing bracket

Nylon



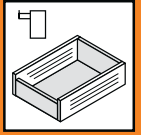
White	Part no.
Right	ZIF.3000.02
Left	ZIF.3000.03

## Installation specifications

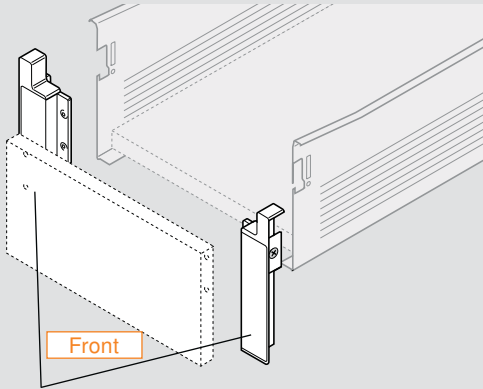




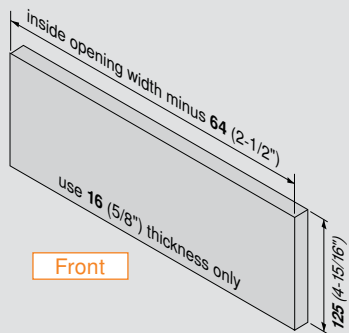
# 330H interior drawer application



## Components

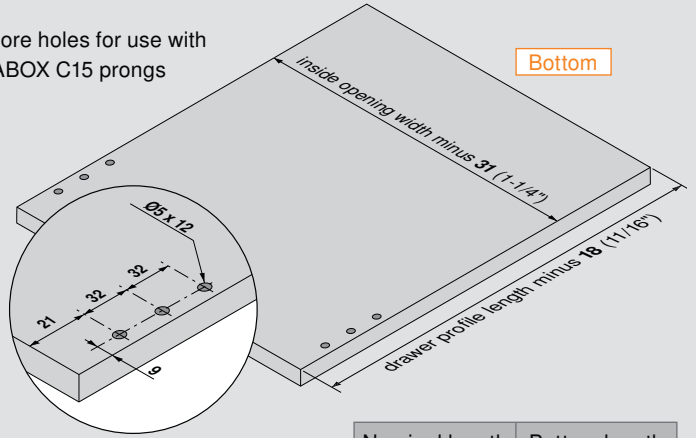


Interior front fixing brackets

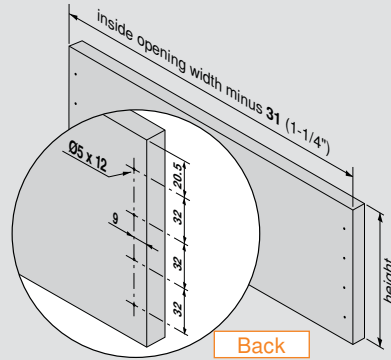


Front

Pre-bore holes for use with METABOX C15 prongs



Bottom



Back

Pre-bore holes if using system screws

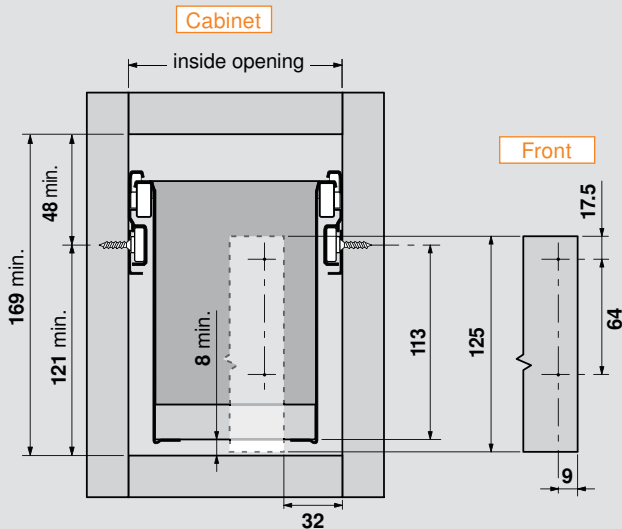
Nominal length	Bottom length
550 (21-5/8")	532 (5-7/16")
500 (19-11/16")	482 (19")
450 (17-11/16")	432 (17")
400 (15-3/4")	382 (15-1/16")

Bottom material thickness	Back height
13 (1/2")	138 (5-7/16")
16 (5/8")	135 (5-5/16")
19 (3/4")	132 (5-3/16")

## Screw-on interior front fixing bracket

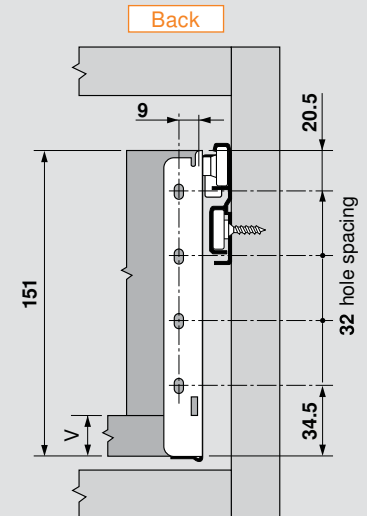
Nylon	White	Part no.
	Right	ZIF.3050 R
	Left	ZIF.3050 L

## Installation specifications



Cabinet

Front

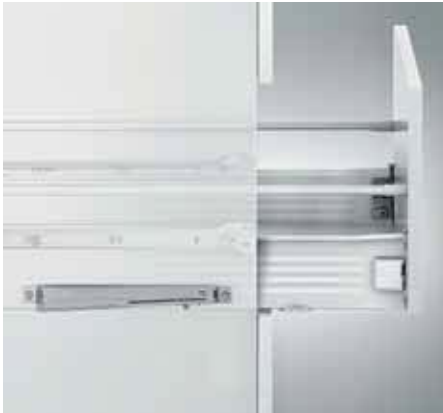


Back

V = variable bottom thickness minimum

# BLUMOTION for METABOX

## Application



## Features

- Soft closing mechanism for METABOX 320 series
- Designed for single extension C15 only
- Minimal opening force required
- One BLUMOTION required for cabinets up to 36" wide
- BLUMATIC self-closing and BLUMOTION in one mechanism

## Required parts

### BLUMOTION for METABOX set

#### Set includes:

- Gray mechanism
- White latch



Part no.

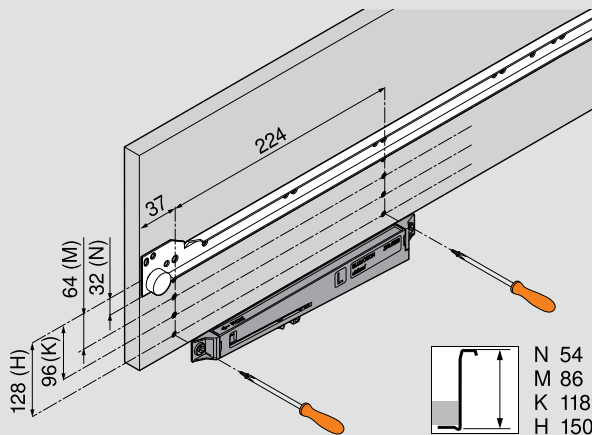
BLUMOTION set

**Z70.0320**

## Installation

### BLUMOTION mechanism mounting

Only one BLUMOTION set required for cabinets up to 36" wide



Installation screws

Part no.

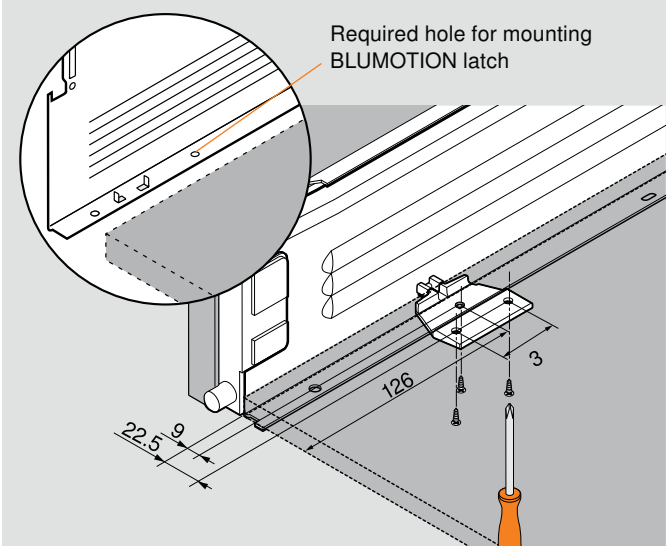
#6 x 5/8", #2 wood screw (two required)

**606N or 606P**

#7 x 14.5 mm system screw (two required)

**661.1450HG**

### Latch attachment



Installation screws

Part no.

#6 x 5/8", #2 wood screw (two required)

**606N or 606P**



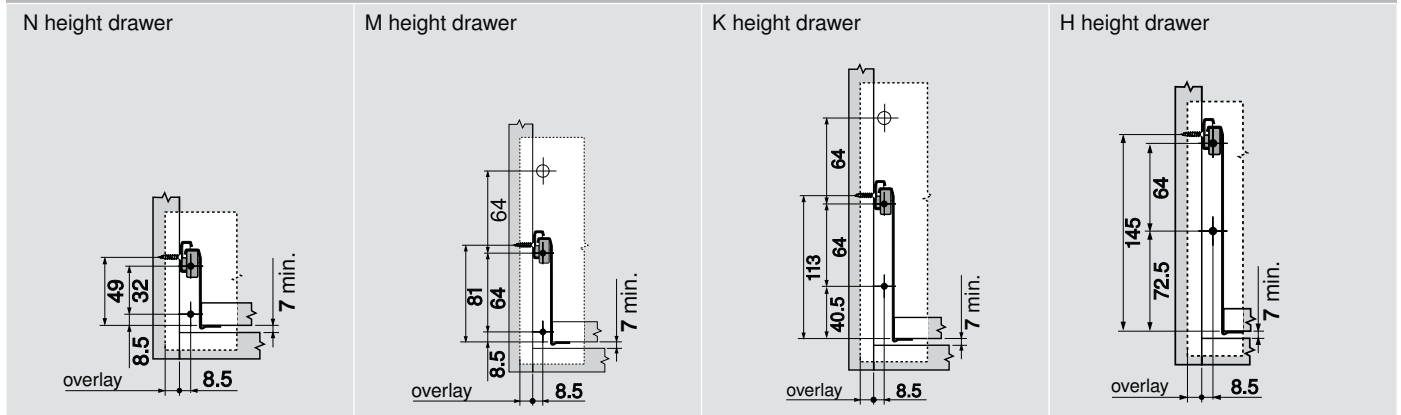
BLUMOTION for METABOX attaches on the left side of the cabinet, below the cabinet profile.



Two screws in the bottom and one in the drawer profile are required.

Dimensions

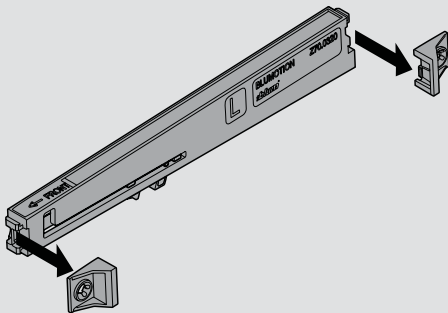
Increased space beneath the drawer required



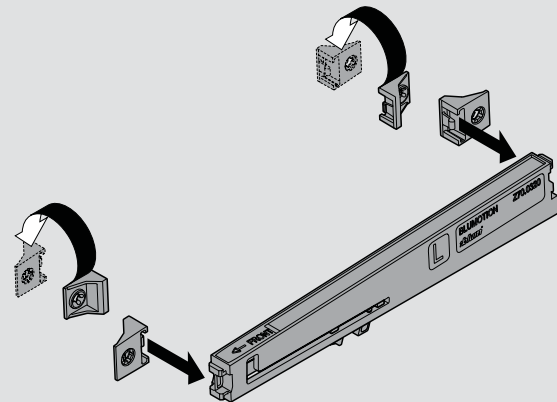
For drawers greater than 36" wide

Use two BLUMOTION for METABOX sets

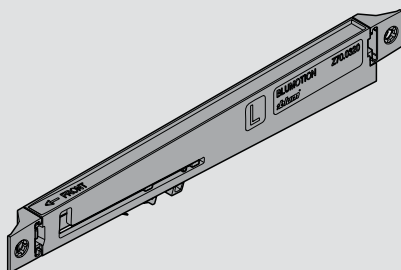
1 After attaching the left mechanism, prepare the second BLUMOTION for attachment to the right side by removing the end brackets



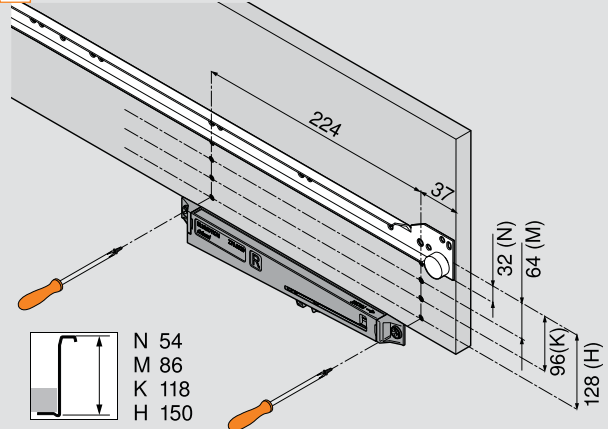
2 Rotate end brackets 180° and re-attach



3 The BLUMOTION mechanism is now ready for attachment to the right side of the cabinet



4 Attach with the installation screws shown



Installation screws

Part no.

#6 x 5/8", #2 wood screw (two required)

606N or 606P

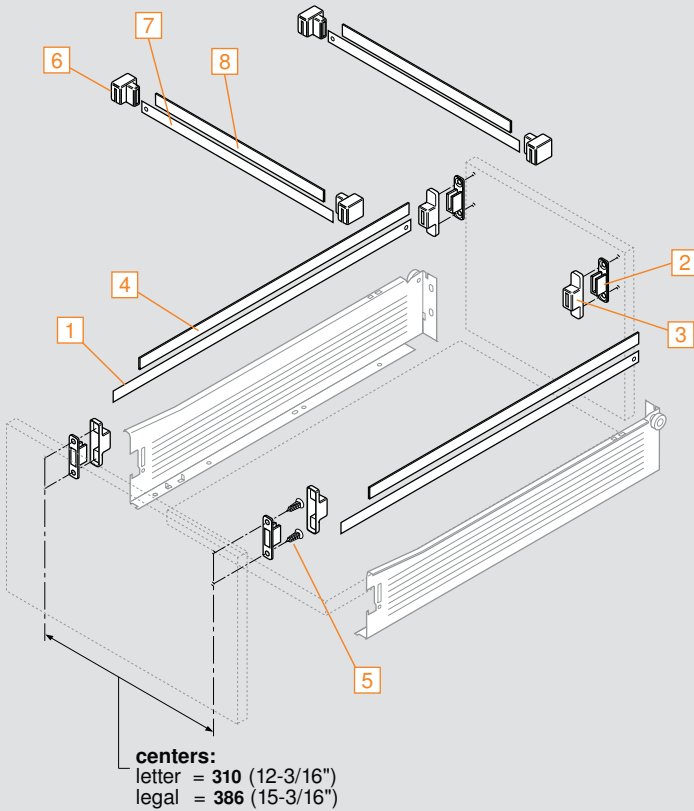
#7 x 14.5 mm system screw (two required)

661.1450HG

**NOTE:** An additional latch is required on the right side of the drawer

# File drawer application

## METAFILE set



Includes components to make one standard hanging file system

### Set includes:

- 1 Steel hanging rails (ZRM.550S) zinc coated, 3 x 13 x 550 (qty 2)
- 2 Rail support brackets (ZRM.0005) synthetic, natural color (qty 4)
- 3 Rail support covers (ZRM.0003) synthetic, white (qty 4)
- 4 Glide profiles (ZRM.550G) synthetic, white, 550 length (qty 2)
- 5 Flathead wood screws (6064N) nickel, #6 x 3/4" (qty 8)

Part no

METAFILE set **ZRM.5500.US**

### Lateral file accessories

- 6 Lateral bracket synthetic, white

Four required per drawer **ZRM.0004.10**

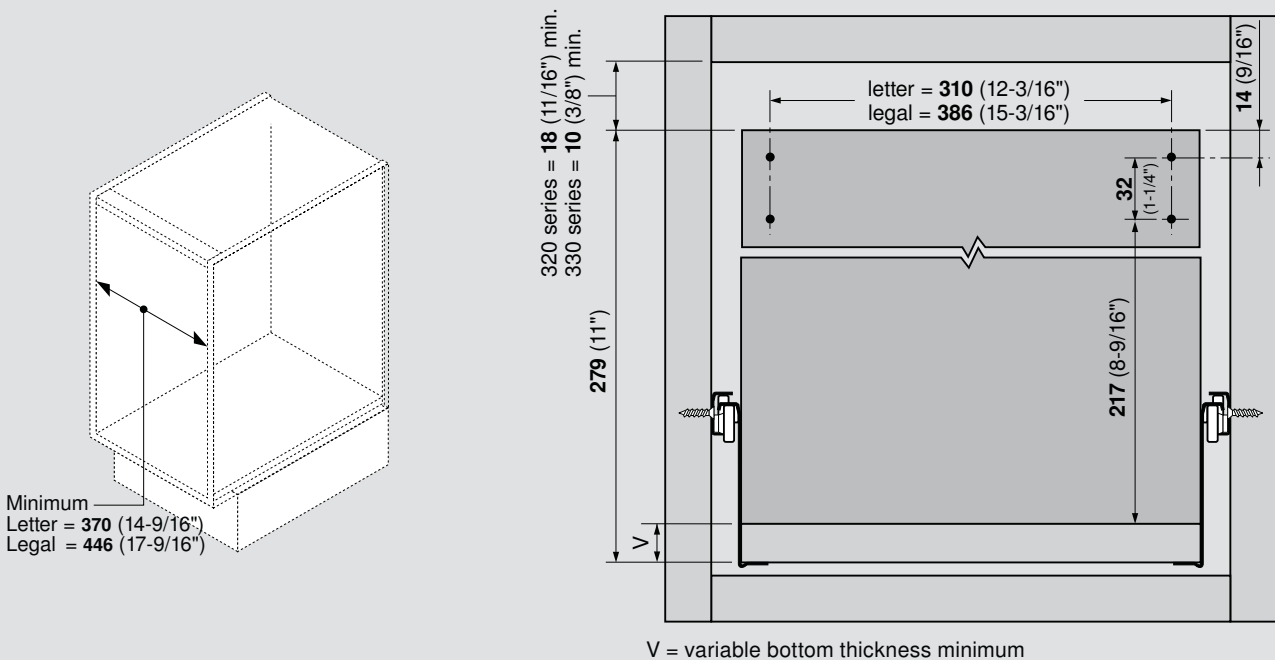
- 7 Steel hanging rail zinc coated, 3 x 13 x 1100 cut to length

Hanging rail **ZRM.1100S**

- 8 Glide profile synthetic, white, 1100 mm long, cut to length

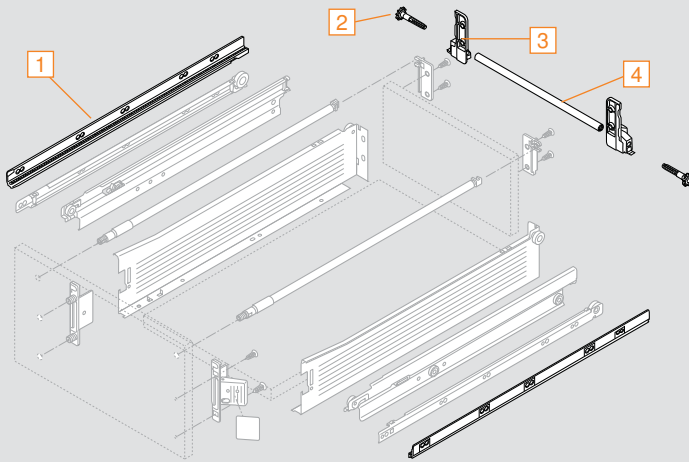
Glide profile **ZRM.1100G**

## Assembly and installation specifications



# Lateral stabilizer

## Additional stabilization for wide drawers



For use with METABOX 330M and H series full extension drawers only.

Available for drawer lengths **550** (22")  
Linkage rod **4** can be cut according to cabinet width.

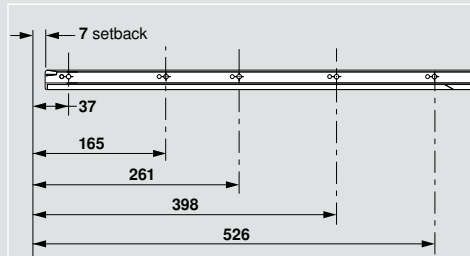
Suitable for cabinet widths up to **1200** (47").  
Simple assembly of all components.

Does not increase load capacity.

Set includes:

- 1** Gear racks, R & L
- 2** Pinion gears (qty 2)
- 3** Brackets, R & L
- 4** Linkage **1076** (42-3/8")

Minimum inside cabinet depth:  
**572** (22-1/2") for standard drawer  
**575** (22-5/8") for interior roll-out tray

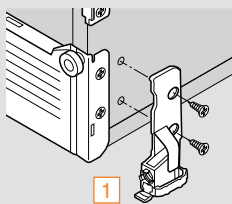


Part no.

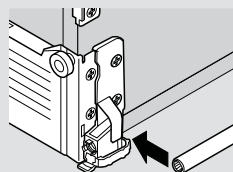
550 (22") drawer length

**ZST.550MH**

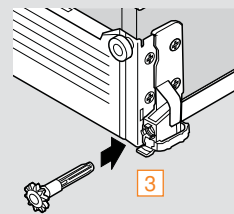
## Assembly and installation specifications



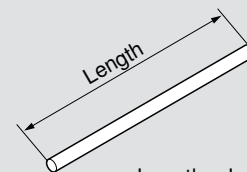
**1**



**2**

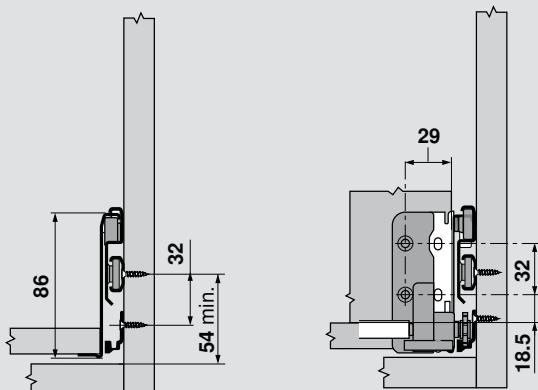


**3**

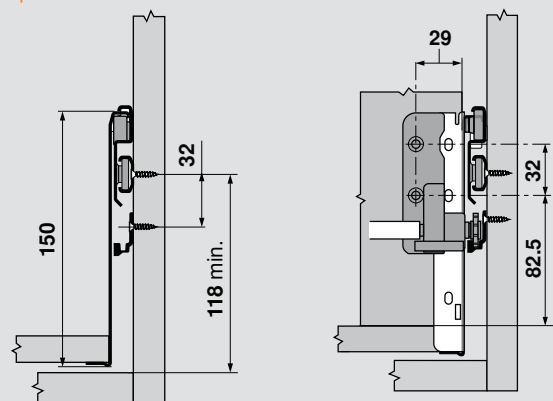


Length = Inside opening width minus **86** (3-3/8")

### 330M specifications

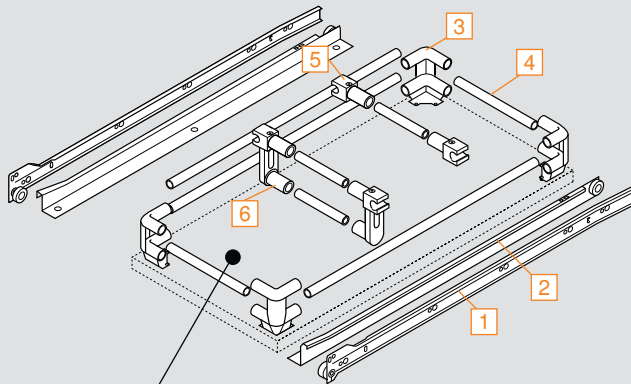


### 330H specifications



# Roll-out shelf application

## For interior roll-out shelf organization



### Roll-out bottom dimensions

Width = inside opening width minus 25

Deduct side spacer width if used

Length = drawer Nominal length

### STANDARD runner set 1 & 2

L&R cabinet and drawer profiles

Colors: white

Drawer length	Part no.
350 (13-3/4")	230M3500
400 (15-3/4")	230M4000
450 (17-11/16")	230M4500
500 (19-11/16")	230M5000
550 (21-5/8")	230M5500

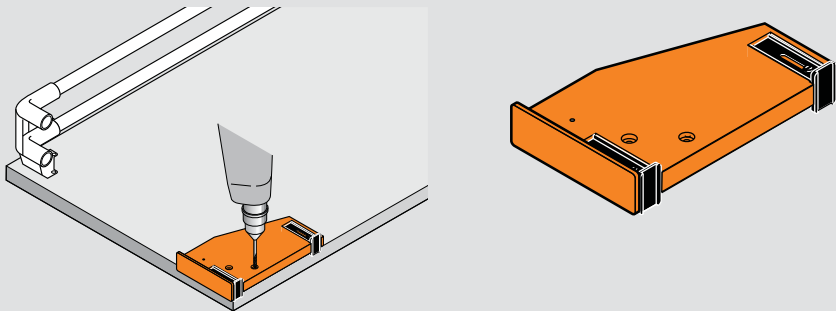
3 Corner post synthetic, white	ZTU.00Z0
-----------------------------------	----------

4 Gallery rails 104 (44") long, cut to length white	ZRG.1104U
---	-----------

5 Single gallery connector synthetic, white	ZRU.00E0.01
--	-------------

6 Double gallery connector synthetic, white	ZRU.00Z0.01
--	-------------

## Assembly and installation specifications



### For roll-out surround assembly

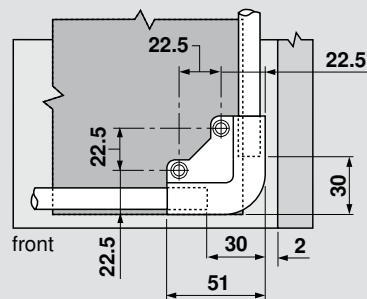
The roll-out surround drilling gauge enables pre-boring of the fixing positions for the corner posts.

### Set includes:

- Special Ø2 mm drill bits (qty 3)
- #2 Phillips, long screwdriver blade

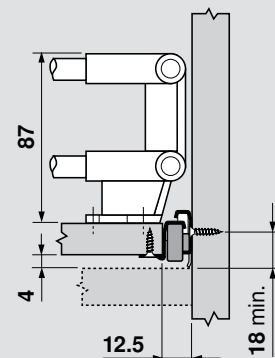
	Part no.
Boring gauge	ZML.0010

## Installation specifications

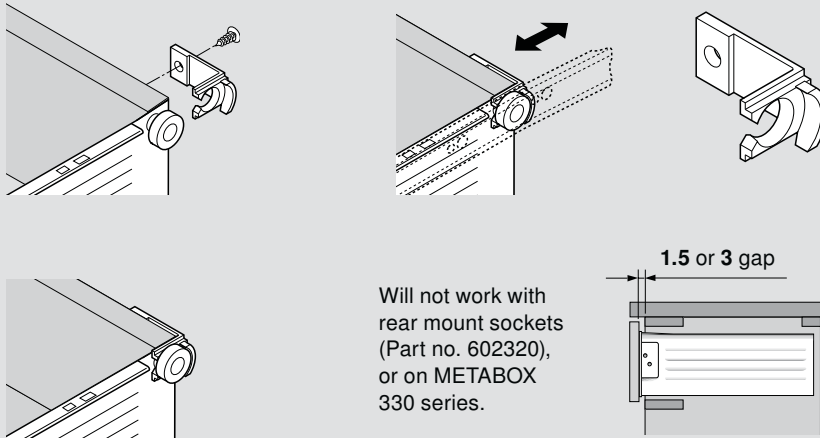


- Side gallery rail length = Nominal length minus 60 (2-3/8")
- Front and back gallery rail lengths = interior cabinet width minus 69 (2-11/16")
- Attach with 606N or 606P screws

## Corner post specifications



## POSI-STOP assembly



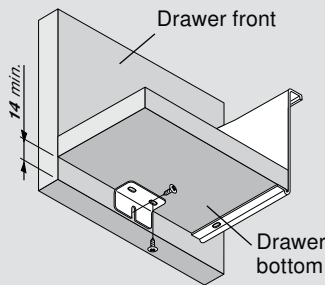
Add-on device to keep drawer front from contacting the cabinet face.

- Available in thicknesses of 1.5 (1/16") or 3 (1/8")
- Synthetic, natural finish
- Non-handed
- Use two per drawer
- Snap in place and secure with wood screw

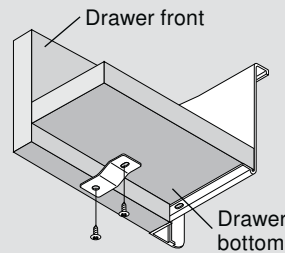
	Part no.
1.5 (1/16") gap	298.3210.01
3 (1/8") gap	298.3230.01
Installation screws	606N or 606P

## Drawer front support brackets

### Standard drawers



### Interior pull-out trays



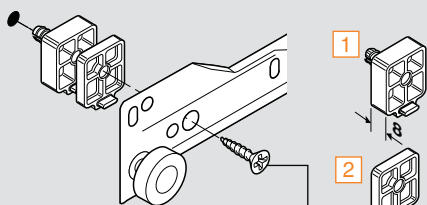
Add-on brackets for wide drawers to keep the front tight to the drawer bottom.

- Stainless steel
- Attach with 612TH screws #6 x 1/2" trusshead

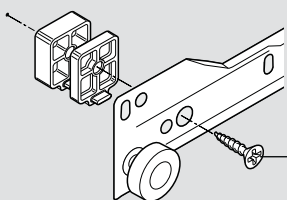
	Part no.
For standard drawers	ZSB.0090.01
For interior roll-out trays	ZSB.0045.01
Installation screw	612TH

## Cabinet profile spacers

### With split dowel

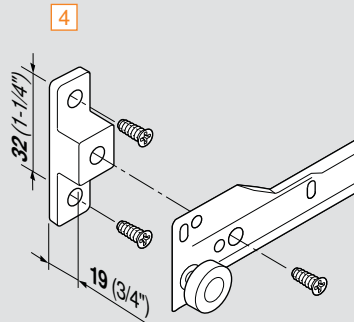


### Without split dowel



Use #6 FH screw that penetrates cabinet side at least 13

### Heavy duty spacer



**NOTE:** Use spacers on front, middle and rear of each cabinet profile for adequate support

To space runners away from the cabinet side to clear door protrusion for interior roll-out trays.

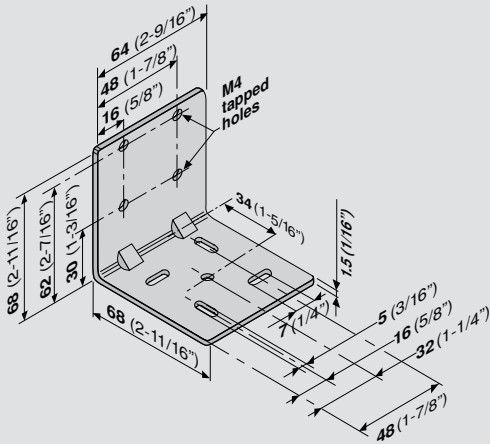
- Two thicknesses available that can be stacked up to 24 (15/16")
- Synthetic, cream color

	Part no.
1 8 (5/16") with Ø5 (3/16") x 11 dowel for linebore mounting	320M0188
2 4 (5/32") stackable	320M0048
3 8 (5/16") stackable	320M0088
Installation screw	606N or 606P
4 32 (1-1/4") x 19 (3/4") Synthetic, white color	602750
Heavy duty spacer	602750
Installation screw	661.1150
Installation screw	661.1450

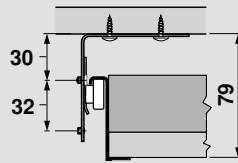




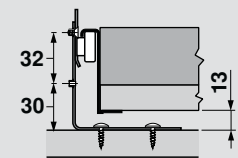
## Universal drawer bracket set



### METABOX top mount (320N shown)



### Bottom mount (320N only)



For mounting Blum runners to the underside of a counter surface (pencil drawer) or to the floor of a cabinet (roll-out tray).

- Zinc-coated steel
- Attach to cabinet with Blum 612TH screws, #6 x 1/2" truss head

#### Set includes:

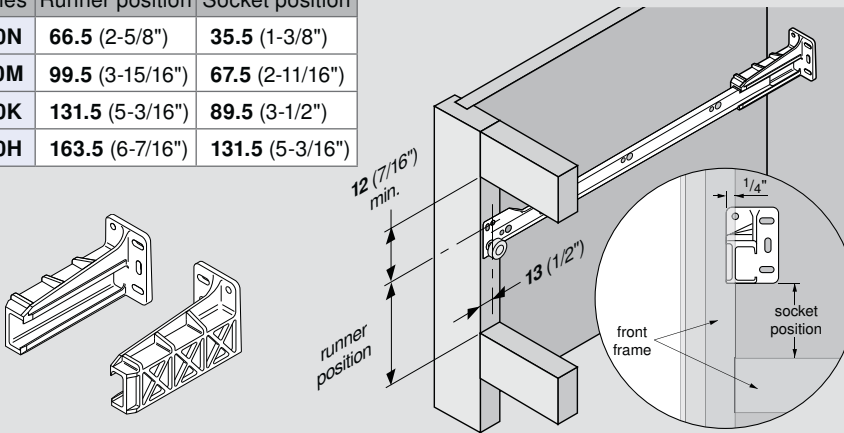
- Universal brackets (qty 4)
- M4 x 6 flathead machine screws to attach runners to brackets (qty 8)

Part no.

Drawer bracket set	295.4000
Installation screw	612TH

## Rear mount sockets

Series	Runner position	Socket position
320N	66.5 (2-5/8")	35.5 (1-3/8")
320M	99.5 (3-15/16")	67.5 (2-11/16")
320K	131.5 (5-3/16")	89.5 (3-1/2")
320H	163.5 (6-7/16")	131.5 (5-3/16")



For use with METABOX 320N, M, K, H and STANDARD 230M runners in frame cabinets.

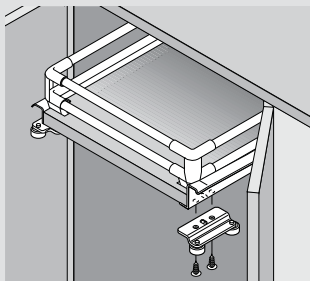
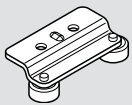
- Synthetic, cream color
- Attach with Blum 612TH screws, #6 x 1/2" trusshead

**NOTE:** Cannot be used with METABOX 330 series or in conjunction with POSI-STOP's

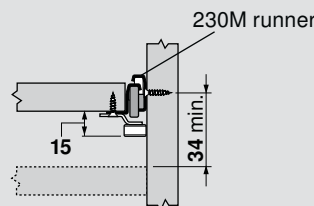
Part no.

Left and right socket set	602320
Installation screw	612TH

## Door protectors



### Space requirements



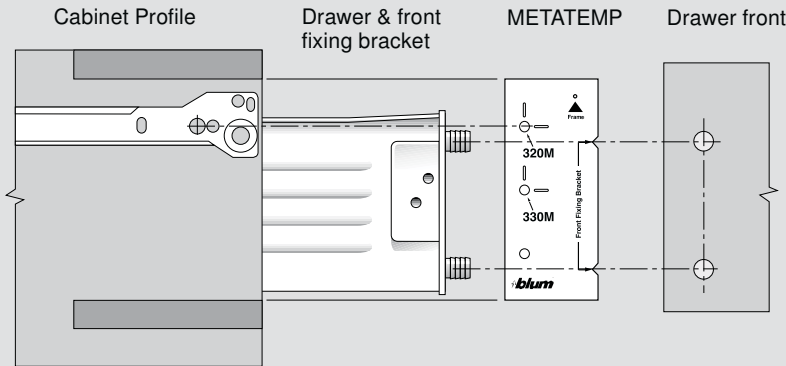
For pull-out surrounds to prevent damage to doors.

- Epoxy coated steel with synthetic rollers, cream color
- Attaches to the underside of the drawer
- For use with STANDARD 230M runners only

Part no.

Door protector	298.2200
Installation screw	612TH

## METABOX layout templates



METATEMP layout templates provide a simple means for locating the cabinet profile and front fixing bracket positions.

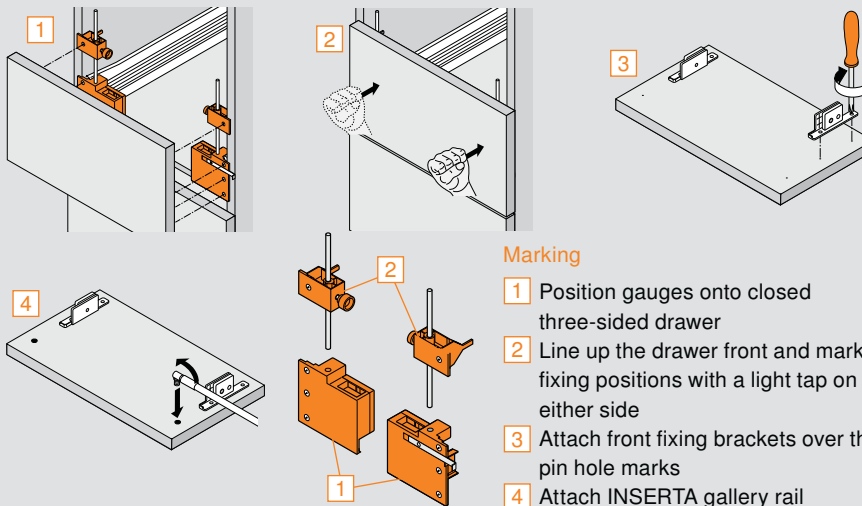
- Included in each kit are five templates for 320N, 320/330M, 320K, 320/330H, and a gallery locator for all series.
- Each template's height is the minimum cabinet opening size required. To use, place on a side panel and mark the cabinet profile location. Transfer the front fixing bracket location to the drawer front.
- For linebored cabinets, insert a shelf pin through the template into the system hole.

Part no.

Layout template

**METATEMP**

## Drawer front marking gauges



For marking all front fixing bracket positions including drawers with galleries.

Standard marking gauge set

Part no.

For METABOX 320N, K, H

**ZML.1500**

For METABOX 320N

**ZML.1510**

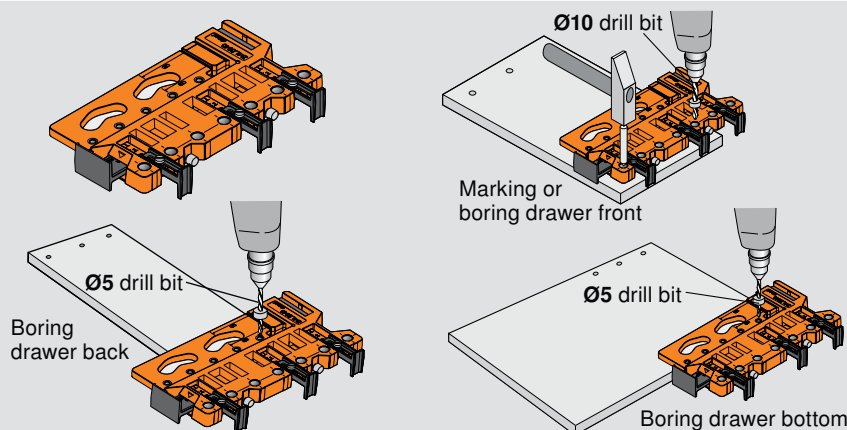
Gallery marking gauge set

- Rod with adjustable marking gauges (qty 2)

Gauge set

**ZML.8000.02**

## Universal boring template set



For manually boring all the holes necessary to build a METABOX drawer.

Boring template can be used for drawer front, back and bottom. Locates all fixing points.

Ø5 (3/16") & Ø10 (3/8") stop collars included.  
Ø10 (3/8") center punch included.

Part no.

Boring template set

**ZML.0040**

Ø5 (3/16") drill bit

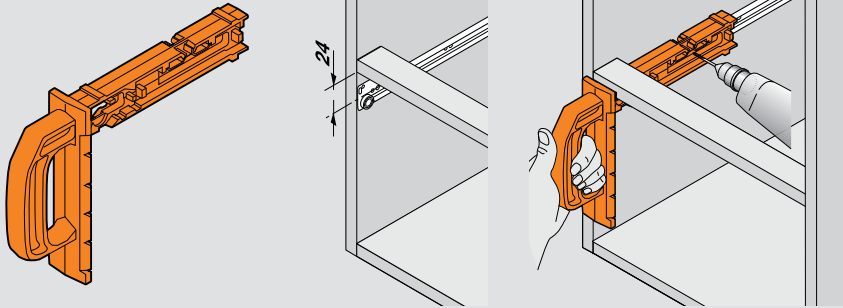
**DB-5mm**

Ø10 (3/8") drill bit

**DB-10mm**

# Assembly aids

## MINIFIX



For precise positioning of cabinet profile fixing screws.

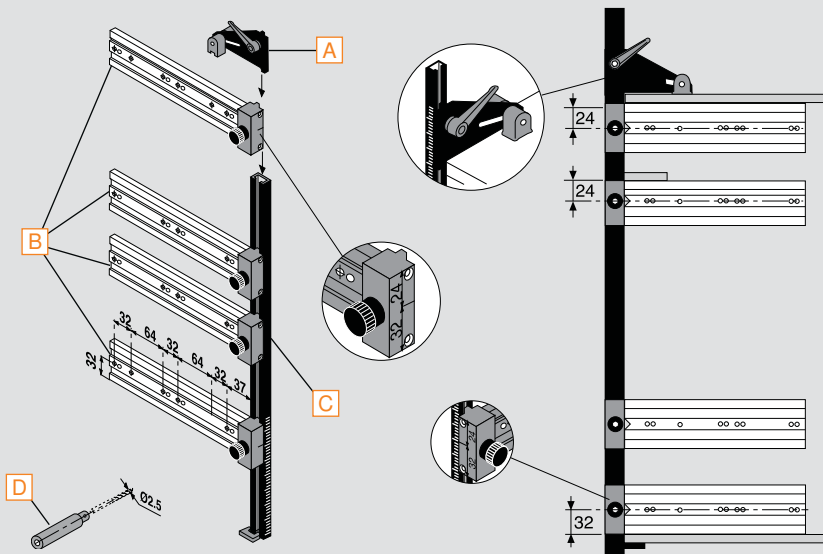
- For METABOX series 320N, M, K, H
- For runners 230M

Part no.

MINIFIX

65.3300

## Adjustable calibrated boring gauge set

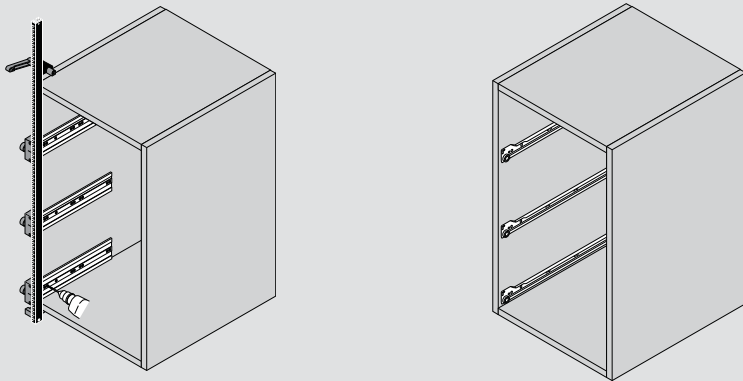


For determining cabinet profile positions and pilot boring.

- Boring gauge can be used with assembled or unassembled cabinets
- Locates precise and level fixing points of cabinet profiles
- Calibrated metric rail for locating cabinet profile position

Set includes:

- A** Clamp assembly
- B** Templates
- C** Calibrated rail, length 1000 (39")
- D** Extension drill bit for Ø2 (1/8")



- 1 Determine runner locations
- 2 Set templates on the bar by the scale
- 3 Clamp assembly to the cabinet side
- 4 Bore Ø2 mm pilot holes for front and middle mounting positions
- 5 Fasten runners to cabinet with wood screws
- 6 Add screws to back of runner for added strength as required

Part no.

Boring gauge set


65.1000


2 mm twist bit

DB-2mm



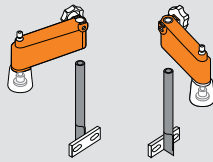


## Machines

MINIPRESS P — Deluxe boring and insertion machine		
	<ul style="list-style-type: none"> <li>Front adjustable boring distance with digital counter</li> <li>Pneumatic hold-down clamps</li> <li>Boring depth adjustment</li> <li>Ruler stops (qty 4)</li> <li>Tool kit included</li> <li>Dust collection attachment</li> </ul>	<ul style="list-style-type: none"> <li>Optional laser center line set</li> <li>Accepts new 8 or 9 spindle heads</li> </ul>
	Single phase — 220V power	M53.1053*US
	Three-phase — 220V power	M53.1004*US

MINIPRESS M — 110V manual boring and insertion machine		
	<ul style="list-style-type: none"> <li>110V power with molding plug (portable)</li> <li>Does not require pressurized air</li> <li>Ruler stops (qty 4)</li> <li>Tool kit included</li> <li>Dust collection attachment</li> </ul>	<ul style="list-style-type: none"> <li>Accepts new 8 or 9 spindle heads</li> </ul>
	Single phase — 110V power	M52.1056*US

MINIDRILL P — Standard boring machine		
	<ul style="list-style-type: none"> <li>Front adjustable boring distance</li> <li>Ruler stops (qty 4)</li> <li>Tool kit included</li> <li>Dust collection attachment</li> </ul>	<ul style="list-style-type: none"> <li>Optional laser center line, digital counter and hold down clamps sets</li> <li>Accepts new 8 or 9 spindle heads</li> </ul>
	Single phase — 220V power	M53.1053*50

Optional items					
	Part no.		Part no.		Part no.
Laser center line set	MZR.5300.US	Digital counter set	MZE.2110	Hold down clamp set	M53.0720.US

# Assembly aids

## MINIPRESS boring heads

Nine spindle



Eight spindle



For line boring with the MINIPRESS.

The nine spindle head bores nine holes 32 mm apart, parallel to the fence. The eight spindle head bores eight holes 32 mm apart, perpendicular to the fence. Bores for all METABOX front fixing brackets and galleries.

Part no.

Nine spindle boring head **MZK.190S**

Eight spindle boring head **MZK.880S**

## Countersink drill bit



Part no.

Ø10 mm drill bit (LH)

**T108-10mm L**

## Drill bits



Drill bits for the MINIPRESS/MINDRILL and boring heads.

Part no.

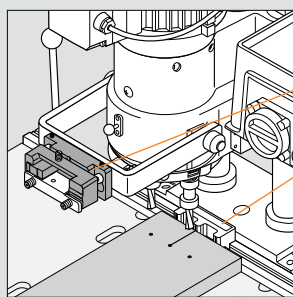
Ø5 mm drill bit (right hand) **M01.ZB05.D2**

Ø5 mm drill bit (left hand) **M01.ZB05.D3**

Ø10 mm drill bit (right hand) **M01.ZB10.02**

Ø10 mm drill bit (left hand) **M01.ZB10.03**

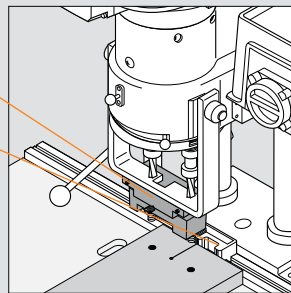
## Installation tools



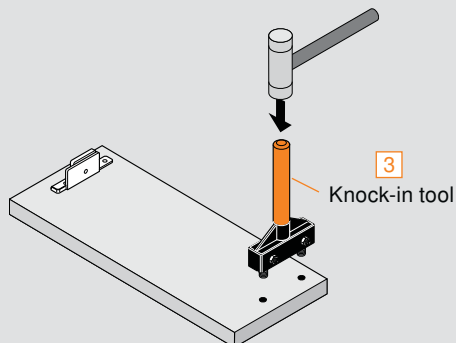
Drill fixing holes

**1** Insertion ram

**2** Three spindle locator



Insert front fixing brackets



**3** Knock-in tool

For location and insertion of front fixing brackets.

Three spindle locator enables the positioning of the drawer front without using fence stops.

Part no.

**1** Insertion ram for MINIPRESS

ZSF.1300 and ZSF.1800 **MZM.0092.01**

**2** Three spindle locator **MZR.2000**

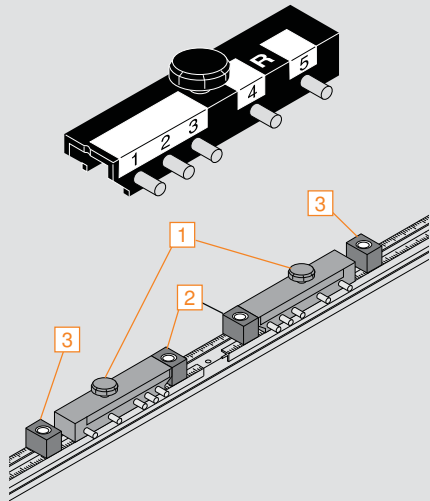
**3** Knock-in tool

ZSF.1300 and ZSF.1800 **ZME.1600.01**

**3** Knock-in tool

ZSF.1610 **ZME.1610**

### MINISTICK fence stop



Enables fast setup for drawer front boring and front fixing bracket insertion with the MINIPRESS.

Eliminates the need for multiple fence stops.

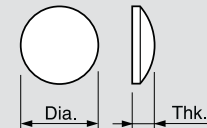
Set includes:

- 1 LH & RH adj. stick mechanism
- 2 Upper drawer stop (qty 2)
- 3 Bottom drawer stop (qty 2)

**NOTE:** Essential tool for production boring of drawer fronts

	Part no.
MINISTICK	MZS.0040

### Bumpers



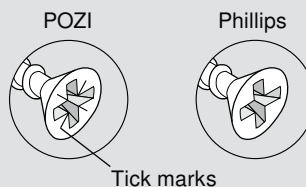
- Cushions door closing
- Clear with a self-adhesive back

	Part no.
Ø7.5 (9/32") x 2 (3/32")	FX4041
Ø12 (15/32") x 3.5 (1/8")	SJ5312

### POZI DRIVER and bits



A POZI screwdriver (different from Phillips) is the most crucial tool you can use to assure that full torque is applied to all Blum mounting screws. POZI screws can be identified by the distinctive "tick" marks located in the center of the screw head recess.



	Part no.
#2 POZI DRIVER	POZI DRIVER
1/4" Magnetic bit holder	BIT HOLDER
#2 x 1" POZI bit insert	POZI BIT #2x1
#2 x 2" POZI bit insert	POZI BIT #2x2

### Replacement dowell and screw

Replacement dowell and screw for the front fixing brackets.

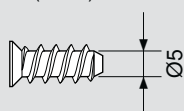


	Part no.
Ø10 mm dowell	80.3532
Dowell screw	608.1200

### Screws

#### Deep thread system screw

Pilot bore Ø5 (3/16") hole



	Part no.
#7 x 11.5 mm, #2 POZI	661.1150.HG
#7 x 13 mm, #2 POZI	661.1300.HG
#7 x 14.5 mm, #2 POZI	661.1450.HG
#7 x 11.5 mm, Special	662.1150.HG

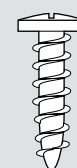
#### Deep thread wood screw



	Part no.
#6 x 5/8", #2 Phillips	606N
#6 x 5/8", #2 POZI	606P
#6 x 3/4", #2 Phillips	6064N
#7 x 5/8", #2 Phillips	707N
#7 x 3/4", #2 Phillips	7074N

#### Truss head wood screw

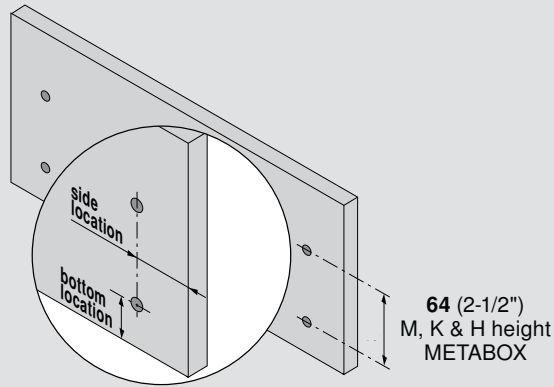
Pilot bore Ø2 (3/32") hole



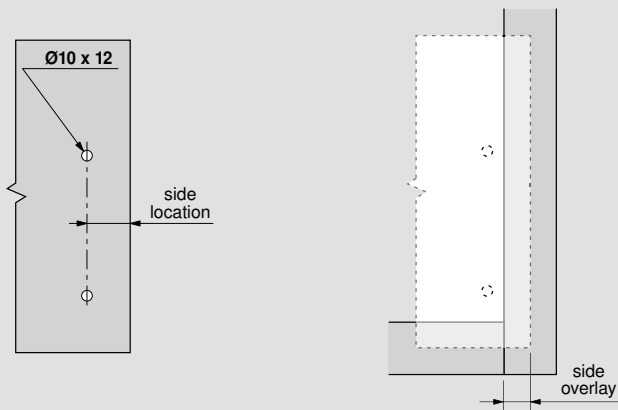
	Part no.
#6 x 1/2", #2 Phillips	612TH

# Drawer front overlay charts

## Determining front fixing bracket locations



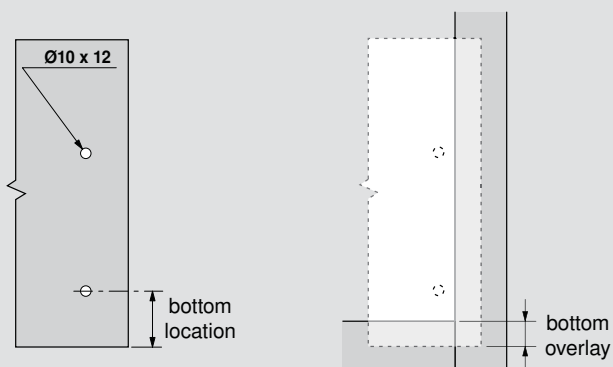
## Side location



Side overlay	Side location
13	21.5
14	22.5
16	24.5
17.5	26
19	27.5

**NOTE:** For overlays not shown please refer to specification pages 6-19 to calculate hole locations

## Bottom location



Bottom overlay	Bottom location		
	N and M	K	H
13	26.5	58.5	90.5
14	27.5	59.5	91.5
16	29.5	61.5	93.5
17.5	31	63	95
19	32.5	64.5	96.5

**NOTE:** For overlays not shown please refer to specification pages 6-19 to calculate hole locations

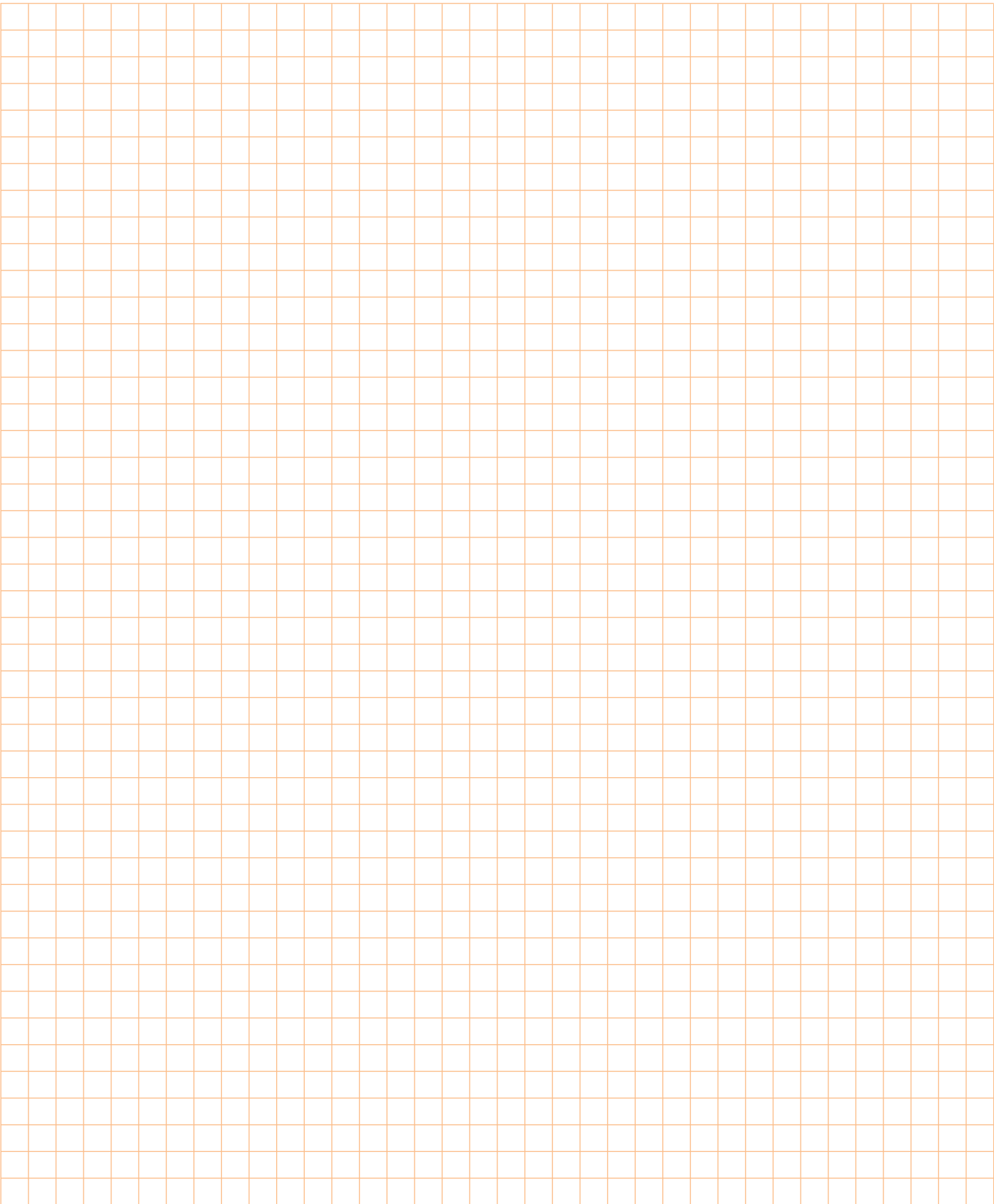


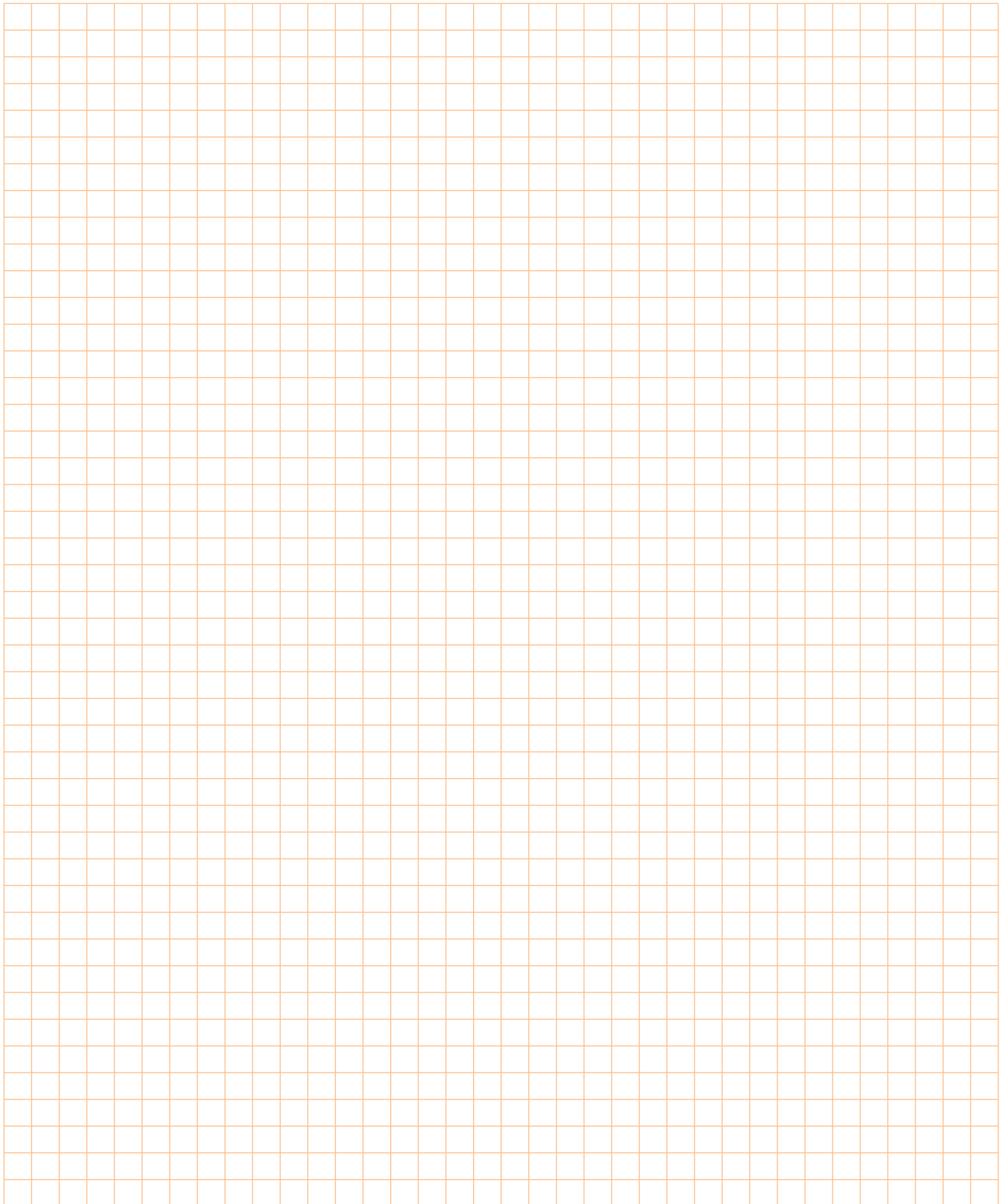
# Part number index



Part no.	Page no.	Part no.	Page no.	Part no.	Page no.
65.1000	38	DB-5mm	37	ZSB.0045.01	35
65.3300	38	DB-10mm	37	ZSB.0090.01	35
80.3532	41	FX4041	41	ZSF.130E	10, 12, 14, 16, 18
230M3500	34	M01.ZB05.D2	40	ZSF.1200	10, 12, 14, 16, 18
230M4000	34	M01.ZB05.D3	40	ZSF.1300	10, 12, 14, 16, 18
230M4500	34	M01.ZB10.02	40	ZSF.1510.04	8
230M5000	34	M01.ZB10.03	40	ZSF.1510.05	8
230M5500	34	M52.1056*US	39	ZSF.1610.04	8
295.4000	36	M53.0720.US	39	ZSF.1610.05	8
298.2200	36	M53.1004*US	39	ZSF.1700	10, 12, 14, 16, 18
298.3210.01	35	M53.1053*50	39	ZSF.1800	10, 12, 14, 16, 18
298.3230.01	35	M53.1053*US	39	ZST.550MH	33
320H3500C 15	14	METATEMP	37	ZTU.00Z0	34
320H4000C15	14	MZE.2110	39		
320H4500C15	14	MZK.1900	40		
320H5000C15	14	MZK.8800	40		
320H5500C15	14	MZM.0092.01	40		
320K3500C15	12	MZR.2000	40		
320K4000C15	12	MZR.5300.US	39		
320K4500C15	12	MZS.0040	41		
320K5000C15	12	POZI BIT #2X1	41		
320K5500C15	12	POZI BIT #2X2	41		
320M0048	33	POZI DRIVER	41		
320M0088	33	SJ5312	41		
320M0188	33	Z36H367SE01	20		
320M2700C15	10	Z36H417SE01	20		
320M3500C15	10	Z36H467SE01	20		
320M4000C15	10	Z36H517SE01	20		
320M4500C15	10	Z70.0320	30		
320M5000C15	10	ZAA.3500	10, 12, 14, 16, 18		
320M5500C15	10	ZAA.3700	10, 12, 14, 16, 18		
320N3500C15	8	ZIF.3000.02	25, 28		
320N4000C15	8	ZIF.3000.03	25, 28		
320N4500C15	8	ZIF.3010.02	24		
320N5000C15	8	ZIF.3010.03	24		
320N5500C15	8	ZIF.3050	27, 29		
330H400PC15	18	ZME.1600	40		
330H450PC15	18	ZME.1610	40		
330H500PC15	18	ZML.0010	34		
330H550PC15	18	ZML.0040	37		
330M400PC15	16	ZML.1500	37		
330M450PC15	16	ZML.1510	37		
330M500PC15	16	ZML.8000.02	37		
330M550PC15	16	ZRE.371S.ID	20		
606N or 606P	41	ZRE.421S.ID	20		
608.1200	41	ZRE.471S.ID	20		
612TH	41	ZRE.521S.ID	20		
661.1150.HG	41	ZRG.1104U	20, 34		
661.1300.HG	41	ZRM.0004.10	32		
661.1450.HG	41	ZRM.1100G	32		
662.1150.HG	41	ZRM.1100S	32		
707N	41	ZRM.5500.US	32		
7074N	41	ZRU.00E0.01	20, 34		
BIT HOLDER	41	ZRU.00Z0.01	20, 34		
DB-2mm	38	ZRU.10B1E	20		

# Notes







Blum, Inc. Headquarters, Stanley NC



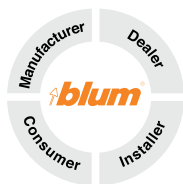
# Why choose Blum



Blum, Inc. is a leading manufacturer of functional hardware for the kitchen cabinet and commercial casework industries specializing in lift systems, concealed hinges and drawer runner systems. Virtually all of the hardware needed to assemble and make cabinets functional is available within the wide range of quality Blum products. Blum supports the U.S. market with a network of more than 150 dependable distributors, 40+ knowledgeable Blum sales representatives and an experienced customer service department.

### Commitment to manufacturing in the U.S.

Blum manufactures many of its products in our 450,000 sq ft manufacturing, logistics and warehouse facility located in Stanley, North Carolina. Manufacturing closer to the customer allows Blum to react quickly to changing customer needs including unexpected surges in demand. Customer pickups and deliveries can be timed to better match their production schedules. Blum is committed to manufacturing in the U.S. for the U.S. market.



Product development at Blum considers all of the various customers who will come in contact with our products. With this "Global Customer Benefits" philosophy we strive to create advantages for all users.



Blum, Inc. is ISO 9001 certified which means that you are assured of consistent quality in every Blum product. What's more they exceed the requirements of ANSI/BHMA standards for cycle life, static load and self-closing performance.



Please visit [blum.com](http://blum.com) for information on other Blum products.  
Technical specifications subject to change without notice.  
LIT.MBX1000.11.11 © 2011 Blum, Inc. Printed in USA

Blum, Inc.  
7733 Old Plank Rd.  
Stanley, NC 28164  
800-438-6788  
fax 704-827-0799  
[blum.com](http://blum.com)

