

Dutchmen

2007 DUTCHMEN Travel Trailers & Fifth Wheels



THOR
INDUSTRIES, INC.

2007 Travel Trailers & Fifth Wheels

Dutchmen

2007 Buyers Guide

GREAT Names!
GREAT Floorplans!
GREAT Value!

Year after year, Dutchmen is a best selling brand because of our commitment to high quality and value. We remain focused on providing innovative products that are loaded with standard equipment and unique features. That's why Dutchmen products offer more value for your dollar than any other recreational vehicle. Plus, Dutchmen's attention to detail in design and construction is why our customers return when it is time for their next recreational vehicle.

Lite Travel Trailers	Page 3-5
Large Slide Travel Trailers	Page 8-11
Mid-Profile Fifth Wheels	Page 11
Standard & Optional Features	Page 12



Dutchmen Lite



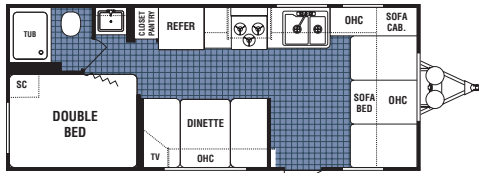
Aerodynamic and easy to tow, the Dutchmen Lite product features non-slide and small slide floorplans ranging from 18' to 31'. Base weights start at 4,200 pounds! Unlike the competitions stripped-down models, Dutchmen Lite is loaded with all the standard features and equipment you will find in the rest of the Dutchmen product line. With many great floorplans available in a variety of sizes to meet your family's needs, Dutchmen Lite is your best choice for affordable lightweight and easy to tow travel trailers.



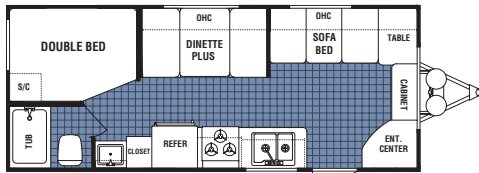
Dutchmen Lite 28R-GS



Dutchmen Lite - Non-Slide & Small Slide Travel Trailers



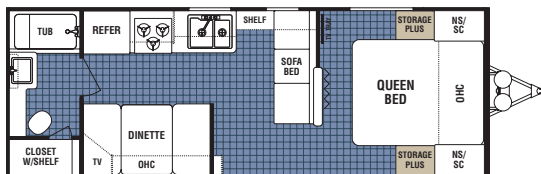
18B Available option: P



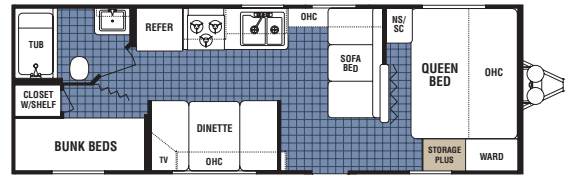
18F Available option: P



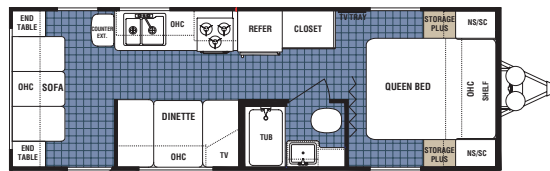
25C-GS



25F



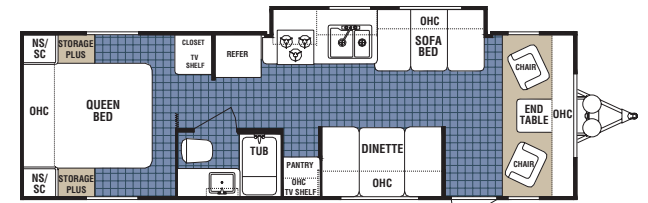
26B Available option: B, P, T



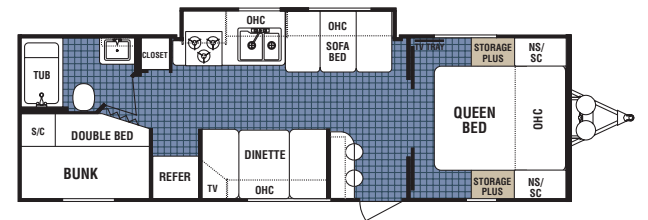
26R



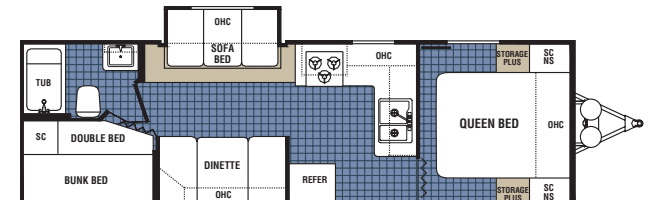
27B Available option: B, P, T



28F-GS

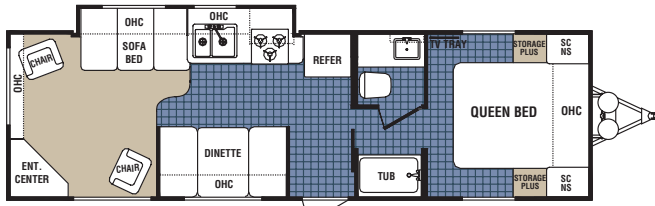


28G-GS Available option: B, O, T

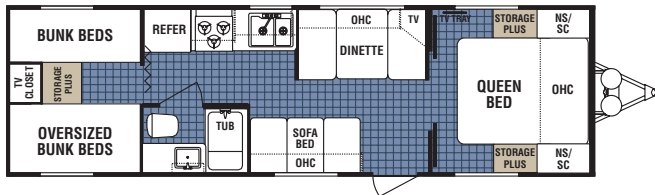


28H-SSL Available option: B, O, T

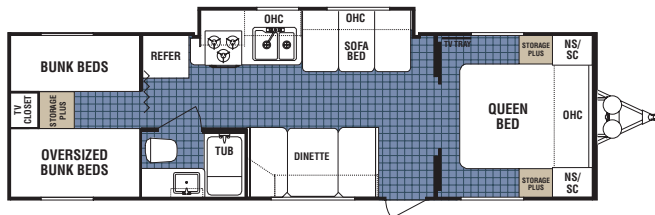
More Standard Features - More Value!



28R-GS

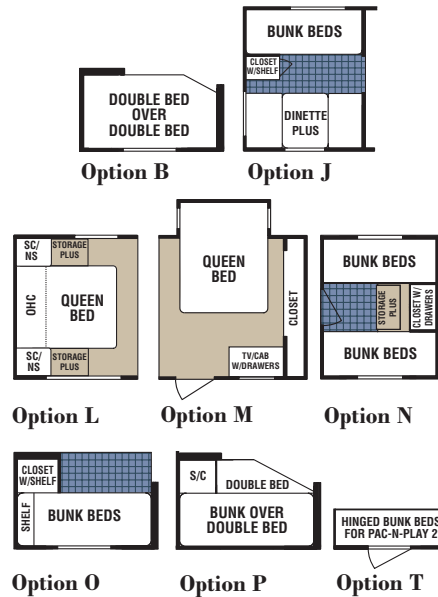


29Q Available option: T



29Q-GS Available option: T

FLOORPLAN OPTIONS



WEIGHTS & SPECIFICATIONS



Lite Travel Trailers

Model	18B	18F	25C-GS	25F	26B	26R	27B	28F-GS	28G-GS	28H-SSL	28R-GS	29Q	29Q-GS
Unloaded Vehicle Weight	4234	4283	4426	4055	4726	4761	5042	5560	5546	5388	5582	5338	5840
Hitch Dry Weight	506	419	488	485	570	647	702	600	653	618	748	6600	792
GVWR	7700	7700	7700	7700	7700	7700	7700	7700	7700	7700	7700	7700	7700
Net Cargo Capacity	3222	3417	2786	3161	2974	2939	2658	2140	2154	2312	2118	2362	1860
Length	23'5"	23'5"	26'1"	25'2"	27'8"	27'6"	28'7"	29'	29'11"	29'10"	31'2"	31'2"	31'7"
Exterior Width	8'	8'	8'	8'	8'	8'	8'	8'	8'	8'	8'	8'	8'
Exterior Height	10'3"	10'3"	10'3"	10'3"	10'3"	10'3"	10'3"	10'3"	10'3"	10'3"	10'3"	10'3"	10'3"
Fresh Water Capacity	36	36	36	36	36	36	36	36	36	36	36	36	36
Grey Water Capacity	42	42	42	42	42	42	42	42	42	42	42	42	42
Black Water Capacity	42	42	42	42	42	42	42	42	42	42	42	42	42
Furnace Size (BTU's)	25000	25000	25000	20000	25000	25000	25000	30000	30000	30000	30000	30000	30000

Tire Size: ST205/75D15(C)

*See vehicle owner's manual for towing capacity



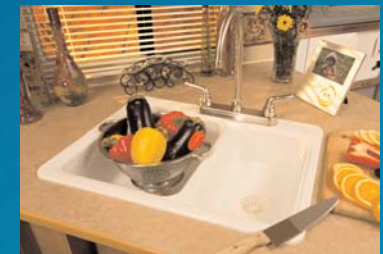
An Aqua Magic toilet with foot flush is standard in all Dutchmen baths.



A 14" x 14" skylight roof vent with 12V fan is standard in all Dutchmen bathrooms.



Dutchmen features "RV 800" residential steel roller drawer glides. They are designed for years of reliable use.



Our composite sink is larger and deeper than most and includes a high-rise designer faucet.

Dutchmen... The Value Leader

MORE STANDARD FEATURES - MORE VALUE FOR YOUR DOLLAR!

Not all RV's are created equal. Here's a list of premium standard features found on all Dutchmen travel trailers and fifth wheels. Compare these features to the competition and we are sure you will agree that Dutchmen is your best RV Value.

- Arched solid wood cabinet doors
- Decorative wall border
- Mini blinds throughout
- Color-coordinated bedspread & headboard
- Full tub & shower surround
- Residential metal drawer glides
- *Armstrong* "Tough Guard" tile-like linoleum
- Large double-bowl sink with high-rise faucet
- Spacious "Storage Plus" storage areas
- Medicine cabinet with mirror
- Designer valances and window coverings
- Premium *Aqua Magic* foot pedal flush toilet
- Double door *Norcold* refrigerator
- Power bath roof vent
- Systems monitor panel
- Cable TV hook-up with satellite prep
- Front diamond plate rockguard on travel trailers
- Larger "Dinette Plus" seating areas
- Lift-up bed platform with storage below
- Premium decor color choices

POPULAR OPTIONS PACKAGED TO SAVE YOU MONEY!

DUTCHMEN COMFORT PACKAGE

Enhance your camping experience with Dutchmen's Comfort Package. Available on all Dutchmen floorplans, the Comfort Package bundles popular options in one affordable package.

- 5-in-1 surround sound home theater system
- 13.5 BTU roof air conditioning
- Microwave oven
- A&E patio awning
- 6 gallon quick recovery gas/DSI water heater with bypass kit
- Skylight over tub
- TV antenna with power booster and cable jack, satellite prep
- 3 Burner range with oven (auto ignition)



Dutchmen features a 5-in-1 home entertainment center with remote control, a DVD/CD/MP3 player, AM/FM tuner, surround sound speakers and sub-woofer. (Included in the Comfort Package)



A skylight over the tub or shower increases headroom and adds light to your bathroom. (Included in the Comfort Package)

Dutchmen Manufacturing, Inc is a division of Thor Industries Inc. - North America's largest manufacturer of towable recreational vehicles. We welcome you to visit our facilities located in Goshen, Indiana and Burley, Idaho.





Dutchmen

Dutchmen

Dutchmen

Large Slide Travel Trailers



Dutchmen large slide travel trailers are your best choice for features, value and luxury. Built with pride and Dutch craftsmanship, Dutchmen travel trailers are loaded with features and amenities that make your time on the road as enjoyable as your time at home. All Dutchmen large slide travel trailers feature large, flush floor slide rooms and are available in floorplans ranging from 24' to 38' feet.



More headroom, increased storage and more living space -
A Dutchmen Advantage!

82" Interior Height

The Competition

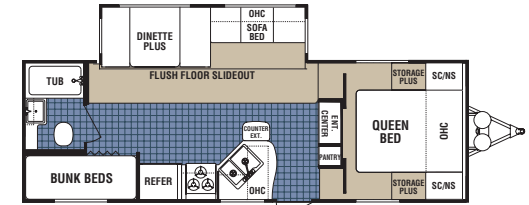
Dutchmen Large Slide Travel Trailers (DSL models) now feature an impressive 82" interior height! The added four inches of headroom makes Dutchmen one of the most spacious units in the industry.

Plus, our slide rooms are a full 6' tall! That is 4" taller than most competitors.

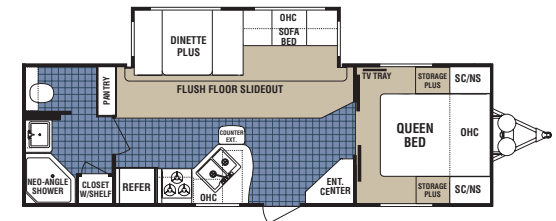
6'Tall Slide Rooms

The Competition

Floorplans



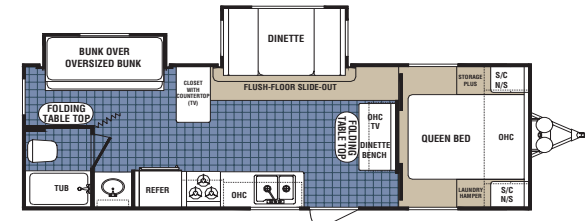
26B-DSL Available option: T



26F-DSL



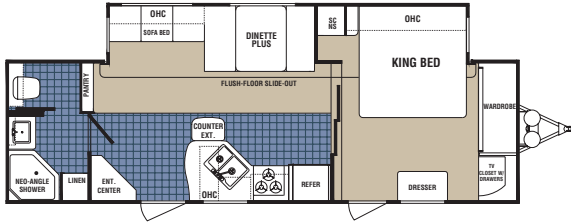
26L-DSL



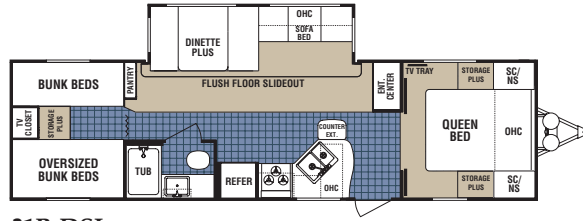
26S-DSL

Dutchmen - Large Slide Travel Trailers

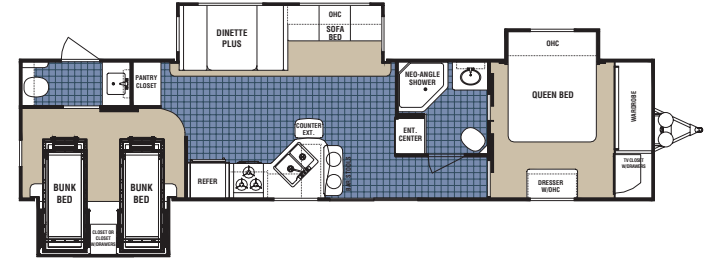
Floorplans Continued From Previous Page



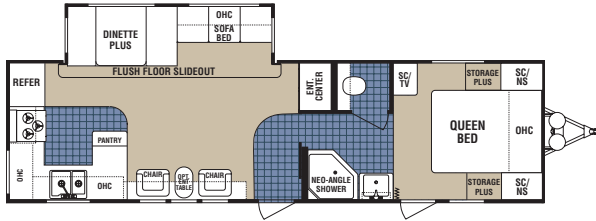
28F-DSL



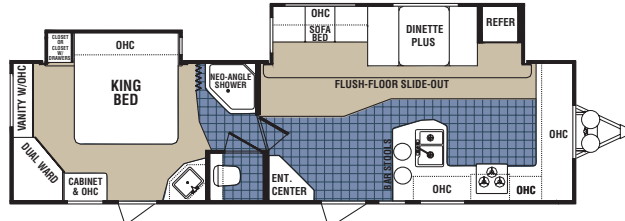
31B-DSL Available option: J, T



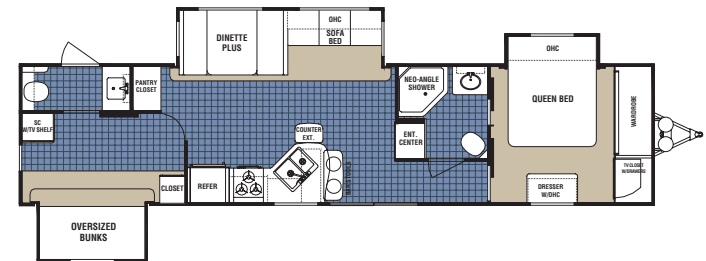
37Q-DSL



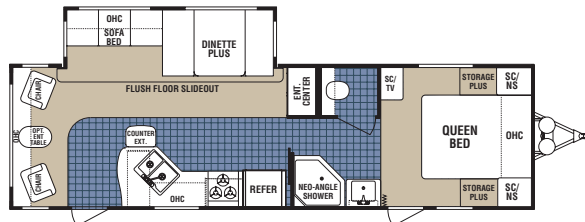
29R-DSL Available option: M



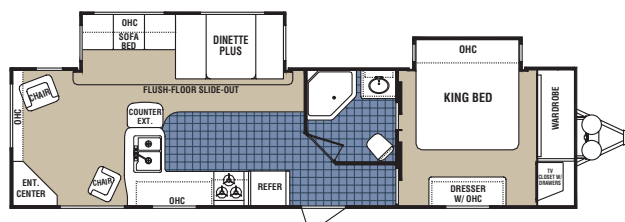
31G-DSL-BS Shown with Optional King Bed Slide



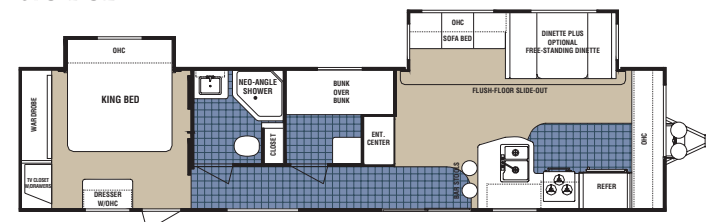
37S-DSL



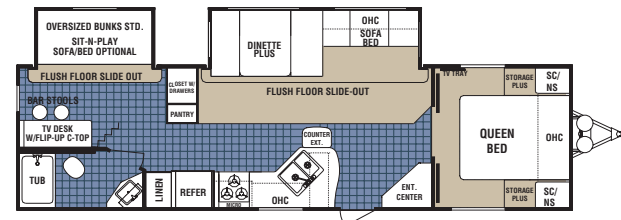
30L-DSL Available option: M



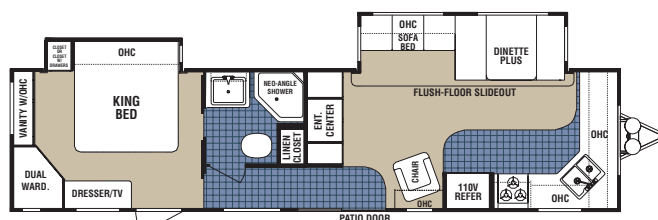
31L-DSL-BS Shown with Optional King Bed Slide



38G-DSL Shown with Optional King Bed Slide



30S-DSL Available option: T, optional bath entry



36F-DSL Shown with Optional King Bed Slide Suite

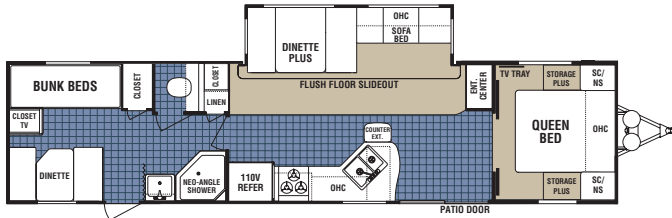
DSL Travel Trailers

Model	26B-DSL	26F-DSL	26L-DSL	26S-DSL	28F-DSL
Unloaded Vehicle Weight	6506	6626	6840	6505	7902
Hitch Dry Weight	964	886	756	745	840
GVWR	9680	9680	9680	9680	9680
Net Cargo Capacity	3174	3034	2840	3175	1778
Length	28'5"	29'9"	29'9"	29'1"	31'11"
Exterior Width	8'	8'	8'	8'	8'
Exterior Height	11'4"	11'4"	11'4"	11'4"	11'4"
Fresh Water Capacity	52	52	52	52	52
Grey Water Capacity	42	42	42	42	42/42
Black Water Capacity	42	42	42	42	42
Furnace Size (BTU's)	30000	30000	30000	30000	30000

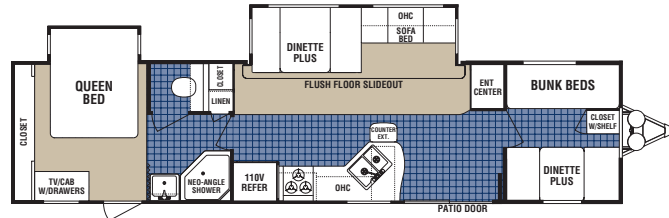
Tire Size: ST225/75R15(D)

Dutchmen - Large Slide Travel Trailers

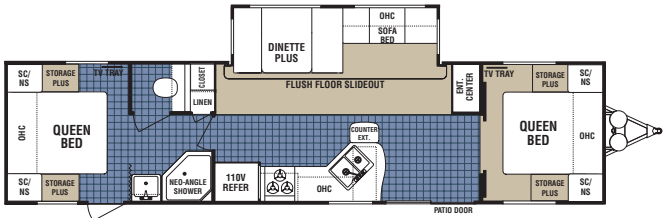
Mid-Profile Fifth Wheels



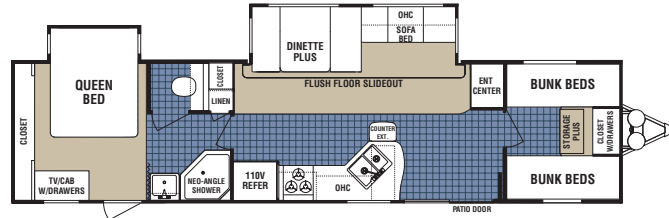
38B-DSL Shown with standard front queen & rear bunks/dinette
Floorplan #1



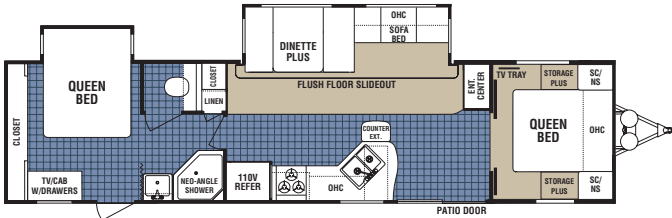
38B-DSL Shown with option (M) queen rear bed slide & (J) front bunks/dinette
Floorplan #4



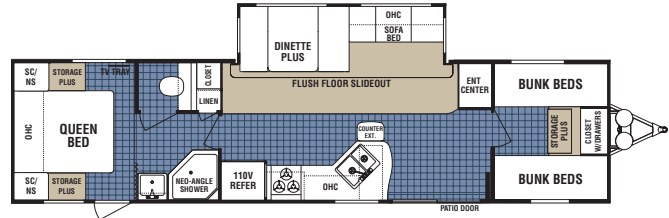
38B-DSL Shown with option (L) queen rear bed & (std.) queen front bed
Floorplan #2



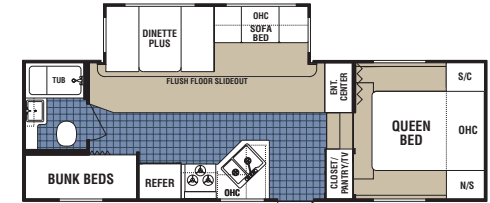
38B-DSL Shown with option (M) queen rear bed slide & (N) front quad bunks
Floorplan #5



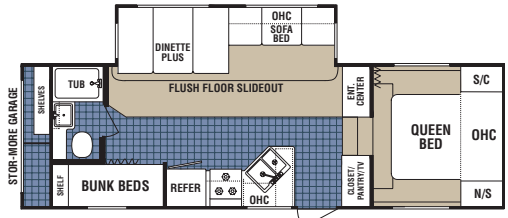
38B-DSL Shown with option (M) queen rear bed slide & (std.) queen front bed
Floorplan #3



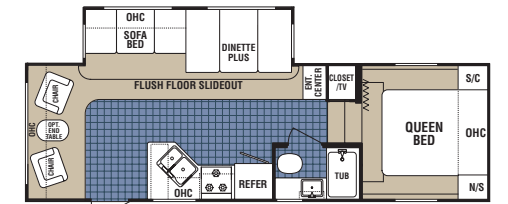
38B-DSL Shown with option (L) queen rear bed & (N) front quad bunks
Floorplan #6



24B-M5 Available option: T



24G-M5 Available option: T



24L-M5

Mid-Profile Fifth Wheels													
29R-DSL	30L-DSL	30S-DSL	31B-DSL	31G-DSL-BS	31L-DSL-BS	36F-DSL-BS	37Q-DSL	37S-DSL	38G-DSL	38B-DSL	24B-M5	24G-M5	24L-M5
7528	7252	7812	7134	8078	7994	8448	NA	NA	NA	8020	6976	7278	6720
948	1044	974	1018	1328	1348	1039	NA	NA	NA	1220	1164	1356	986
9680	9680	9680	9680	9680	9680	11117	NA	NA	NA	11176	10560	10560	10560
2152	2428	1868	2546	1602	1736	2728	NA	NA	NA	3156	3584	3282	3840
33'6"	32'3"	33'10"	33'3"	34"	35'6"	37'7"	NA	NA	NA	39'3"	27' 10"	29'	26' 1"
8'	8'	8'	8'	8'	8'	8'	NA	NA	NA	8'	8'	8'	8'
11'4"	11'4"	11'4"	11'4"	11'4"	11'4"	11'4"	NA	NA	NA	11'4"	12' 2"	12' 2"	12' 2"
52	52	52	52	52	52	52	NA	NA	NA	52	52	52	52
42/42	42	42/42	42	42/42	42/42	42/42	NA	NA	NA	42	42	42	42
42	42	42	42	42	42	42	NA	NA	NA	42	42	42	42
34000	34000	34000	30000	34000	34000	34000	NA	NA	NA	34000	34000	34000	30000

Vehicle loading - Every effort has been made to provide the greatest number of options for the recreational vehicle owner. Along with these choices comes the responsibility to manage the loads that are imposed by the choices that remain within the manufacturer's specified chassis weight limits. Do not overload the recreational vehicle. **Dry weight** is the weight of the unit with standard run features. Some optional equipment not included. **Net carrying capacity (NCC)** is determined by subtracting unloaded vehicle weight (UVW) from gross vehicle weight (GVWR) and includes fluids, options and cargo. Liquid capacities and weights are approximations only.

Warning - This information is intended as a guide only. Weights of individual vehicles may vary. Consult your owner's manual for complete loading, weighing and towing instructions.

Dutchmen 2007 Standard Features

Standard Features	Non Slide and Small Slide TT	Large Slide TT and M5 Fifth Wheels
Appliances & Electrical		
12 volt demand water pump	STD	STD
Safety equipment: Fire extinguisher, smoke/LP/CO detector	STD	STD
110 volt duplex receptacles interior and exterior	STD	STD
55 Amp converter with built-in battery charger	STD	STD
TV tray in bedroom	STD	STD
Hydro-flame forced air, DSI furnace with wall thermostat	STD	STD
Kitchen		
Norcold double door gas/electric refrigerator	STD	STD
Range hood with 12 volt light and exhaust fan	STD	STD
Larger "Dinette Plus" eating areas	STD	STD
Extra large, double bowl sink with high rise faucet	STD	STD
Countertop extension (see floorplan)	N/A	STD
Bath		
ABS tub/shower surround	STD	STD
Medicine cabinet with mirror	STD	STD
Shower curtain (Most models)	STD	STD
Glass shower door (Neo-angle showers)	N/A	STD
12 Volt power exhaust roof vent in bath	STD	STD
GFI protected 110 volt duplex receptacle	STD	STD
Aqua Magic foot flush toilet	STD	STD
Misc.		
Hardwood arched cabinet doors	STD	STD
Lift-up bed platform with storage below	STD	STD
Slide-out room overhead cabinet (living room slide only)	STD	STD
Oversized storage drawers with metal drawer guides	STD	STD
Mini-blinds throughout	STD	STD
Living room carpet (where possible)	N/A	STD
Designer valances	STD	STD
Brushed nickel cabinet door hardware	STD	STD
Décor globe light over dinette	STD	STD
Coat hooks	STD	STD
Residential tile-like linoleum	STD	STD

Popular Optional Features

Standard Features	Non Slide and Small Slide TT	Large Slide TT and M5 Fifth Wheels
Comfort Package	OPT	OPT
Bedroom slide	NA	OPT
Pac-n-Play storage	OPT	OPT
Executive chairs	OPT	OPT
Exterior spray and wash station	OPT	OPT

Standard Features	Non Slide and Small Slide TT	Large Slide TT and M5 Fifth Wheels
Construction		
I-beam cambered chassis	STD	STD
ALKO leaf spring axle	STD	N/A
ALKO leaf spring axles with Ultra-Lube feature	N/A	STD
Tandem axles with 4 wheel electric brakes	STD	STD
Large support outriggers with solid continuous weld	STD	STD
5/8" Exterior grade tongue & groove plywood floor	STD	STD
Double entry steps	STD	N/A
Triple entry steps	N/A	STD
Rear bumper with sewer hose storage	STD	STD
Track guided electric-powered flush floor living room slide-out	N/A	STD
Electric slide-out system	STD	STD
Rotocast holding tanks	STD	STD
Twinn 30# LP bottles with cover	STD	STD
Aerodynamic front profile with diamond plate rock guard (TT's)	STD	STD
Fiberglass insulation-R7	STD	STD
Tinted radius clamp ring windows - oversized dinette window	STD	STD
Rain gutter with corner downspout	STD	STD
Combination flush-mount entry door latch/dead-bolt lock	STD	STD
Radius-corner exterior "Storage Plus" compartments (where possible)	STD	STD
Detachable 30 amp power cord	N/A	STD
Patio light	STD	STD
One-piece seamless EPDM rubber roof (12 year rubber warranty)	STD	STD
Full walk-on roof with 5" trusses and 3/8" decking	STD	STD
Ducted air conditioning (most models)	STD	STD
Hitch light	STD	STD
Pass-through storage light	STD	STD

See Dealer for Available Options

Product information, specifications, and photography in this brochure were as accurate as possible at time of printing. Photographs may contain some features that are optional on your vehicle. Since we continually strive to improve our products, actual products may differ. Prices and specifications are subject to change without notice. All capacities are approximate and dimensions are nominal. Some features shown are optional and may be different or unavailable in Canada. All logos and brand names shown in this brochure are registered trademarks of Dutchmen Mfg. Inc.

Vehicles are designed for recreational use only and not intended for use as a primary residence.

Standard Features	Non Slide and Small Slide TT	Large Slide TT and M5 Fifth Wheels
Stabilizer jacks	OPT	OPT
Raised panel hardwood insert for refrigerator	NA	OPT
Free-standing dinette (available on most DSL floorplans)	NA	OPT
Hide-a-bed sofa	NA	OPT
10 Gallon gas electric water heater with DSI	NA	OPT

Decor Choices



MARCUS GREEN



HOWLAND TAUPE



JANINE ROSE



JARROW BLUE

www.dutchmen-rv.com

Dutchmen Manufacturing, Inc.
A division of Thor Industries
2164 Caragana Court ■ Goshen, IN 46526
Sales: 574.534.1224 ■ Fax: 574.975.0626

Your Local Dealer