



Little Prince

Towel

Yarn: Adlibris Cotton Mercerized (sport weight), or similar

Color A: approx 95 m/103 yd, color B: approx 126 m/137 yd

Hook: 3.0 mm

Measurements: approx 35 x 51 cm/14 x 20 in

Gauge: 20 dc and 10 rows = 10 x 10 cm/ 4 x 4 in

Abbreviations (US terms)

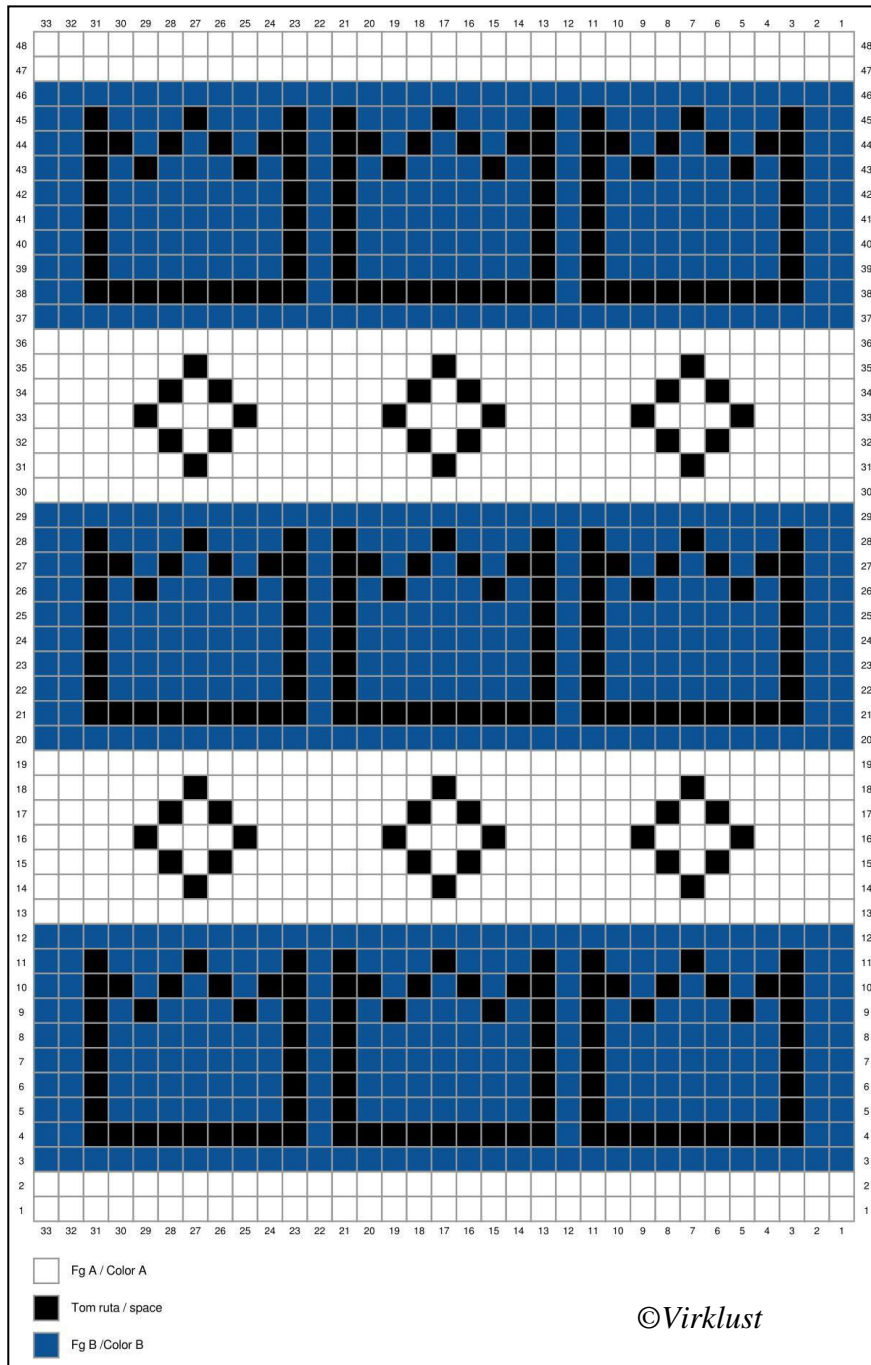
st	stitch	dc	double crochet
sl st	slip stitch	* - *	repeat
ch	chain	[-]	work in the same st
sc	single crochet	FO	fasten off

Notes

- You'll find the written pattern below the chart
- The chains at the end of a row are turning chains. They do not count as a st
- Change color at the last pull through on the last st on a row, before the turning chains
- Stitch count in ()
- I recommend that you block your finished piece for best results

Chart key

- □ = 3 dc, color A
- = 3 dc, color B
- = 1 dc, ch 1, skip 1 st, 1 dc (=space)
- Note that all adjacent blocks share a common dc in the center, so: 2 blue/white blocks side by side = 5 dc, blue/white blocks side by side = 7 dc, etc.
1 blue/white block + 1 black block = 3 dc, ch 1, skip 1 st, 1 dc
2 black blocks = 1 dc, ch 1, skip 1 st, 1 dc, ch 1, skip 1 st, 1 dc



With color A, ch 69 loosely

Row 1: Start in the 3rd ch from hook, 1 dc in each st (67 dc, do not count the initial ch 2), ch 2, turn

Row 2: 67 dc, *change color*, ch 2, turn

Row 3: 67 dc, ch 2, turn

Row 4: 5 dc, *ch 1, skip 1 st, 1 dc* 9 times, 2 dc, repeat * - *, 2 dc, repeat * - *, 4 dc (40 dc, 27 ch), ch 2, turn

Rows 5-8: 5 dc, *ch 1, skip 1 st, 15 dc, ch 1, skip 1 st, 3 dc* 3 times, 2 dc (61 dc, 6 ch), ch 2, turn

Row 9: 5 dc, *ch 1, skip 1 st, 3 dc, ch 1, skip 1 st, 7 dc, ch 1, skip 1 st, 3 dc, ch 1, skip 1 st, 3 dc* 3 times, 2 dc (55 dc, 12 ch), ch 2, turn

Row 10: 5 dc, *ch 1, skip 1 st, 1 dc, ch 1, skip 1 st, 3 dc, ch 1, skip 1 st, 3 dc, ch 1, skip 1 st, 3 dc, ch 1, skip 1 st, 1 dc, ch 1, skip 1 st, 3 dc* 3 times, 2 dc (49 dc, 18 ch), ch 2, turn

Row 11: 5 dc, *ch 1, skip 1 st, 7 dc, ch 1, skip 1 st, 7 dc, ch 1, skip 1 st, 3 dc* 3 times, 2 dc (58 dc, 9 ch), ch 2, turn

Row 12: 67 dc, *change color*, ch 2, turn

Row 13: 67 dc, ch 2, turn

Row 14: 13 dc, ch 1, skip 1 st, *19 dc, ch 1, skip 1 st* 2 times, 13 dc (64 dc, 3 ch), ch 2, turn

Row 15: 11 dc, ch 1, skip 1 st, 3 dc, ch 1, skip 1 st, *15 dc, ch 1, skip 1 st, 3 dc, ch 1, skip 1 st* 2 times, 11 dc (61 dc, 6 ch), ch 2, turn

Row 16: 9 dc, ch 1, skip 1 st, 7 dc, ch 1, skip 1 st, *11 dc, ch 1, skip 1 st, 7 dc, ch 1, skip 1 st* 2 times, 9 dc (61 dc, 6 ch), ch 2, turn

Row 17: = row 15

Row 18: = row 14

Row 19: 67 dc, *change color*, ch 2, turn

Rows 20 – 29 = rows 3-12

Rows 30 – 36: = rows 13 – 19

Rows 37 – 46 = rows 3-12

Row 47: 67 dc, ch 2, turn

Row 48: 67 dc

Do not cut yarn. Turn your work and continue with the edging across the top edge.

Edging and hanger

Row 1: ch 1 (=1 sc), 31 sc, ch 15, skip 3 st, 32 sc (64 sc, 15 ch), turn

Row 2: 1 sl st in each sc, 1 sc in each ch, 1 sl st in each sc to end of row (64 sl st, 15 sc). *Do not work the sl st too tight. Change to a larger hook if needed.*

FO

With color A, work as follows across the bottom edge. The first st is worked as a standing sc.

Row 1: 1 sc in each st (67 sc), turn

Row 2: ch 3, 3 dc in the first st, *skip 2 st, [1 sc, ch 3, 3 dc] in the next st* 21 times, skip 2 st, 1 sc in the last st on row (22 points)

FO. Weave in all ends.

Wash and block. Follow the washing instructions on the yarn label.



**If you share your work in social media, please refer back to me or this pattern.
Feel free to tag me with #virklust or @virklust so I can find and see your work!**