

## Live Healthy

Congratulations! You are about to enjoy, healthy water filtered by your Powered Water Filtration System.

Start drinking healthier water, better tasting beverages (coffee, tea, smoothies) and better tasting foods (vegetables, rice, pasta, soups). Even your pets and plants can now benefit with chemical-free water.

Please read and follow the instructions on setup and care of the product. If you need help, please call us at 866-662-6885 or email [support@aquasana.com](mailto:support@aquasana.com).

Enjoy!

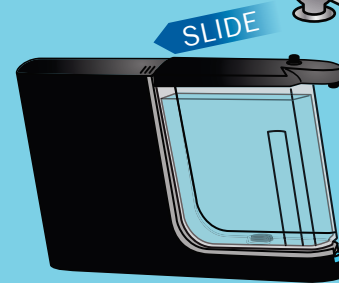
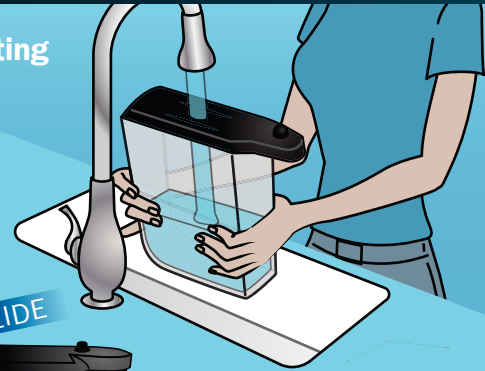
Sincerely,

The Aquasana Team

### 1. Prime the Pump

Before inserting the filter...

Fill dispenser with tap water.



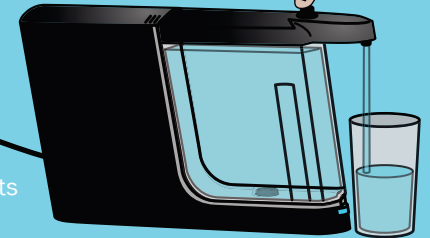
Place firmly on dock.



Plug it in.



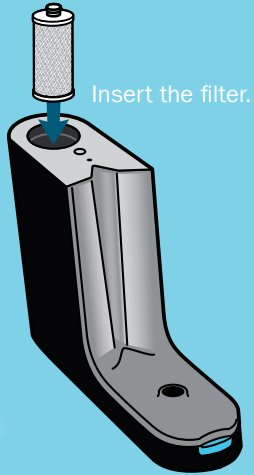
Hold down button until entire contents have run through.



It may take 2-4 Minutes for water to begin flowing.

## 2. Install filter

### Filter



Replace lid by sliding left.

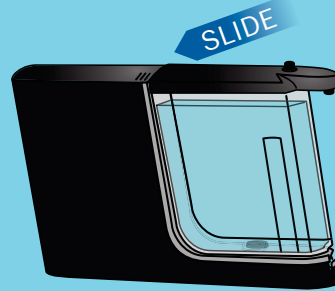
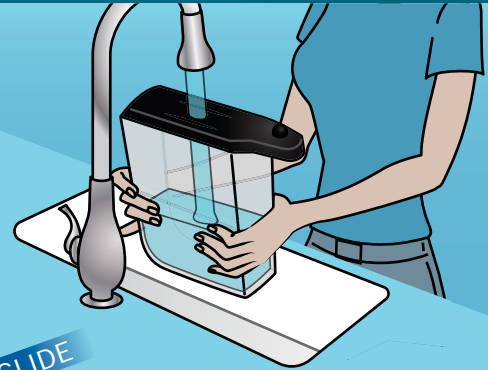


Plug into outlet.

## 3. Flush the filter

### Dispenser

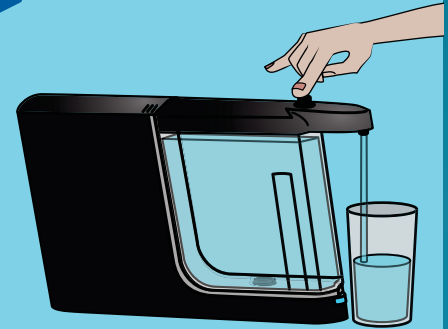
Fill dispenser with tap water.



Place firmly on dock.

Hold down button to filter and dispense water instantly.

Release button early to avoid spills.



## Use and Care Guide

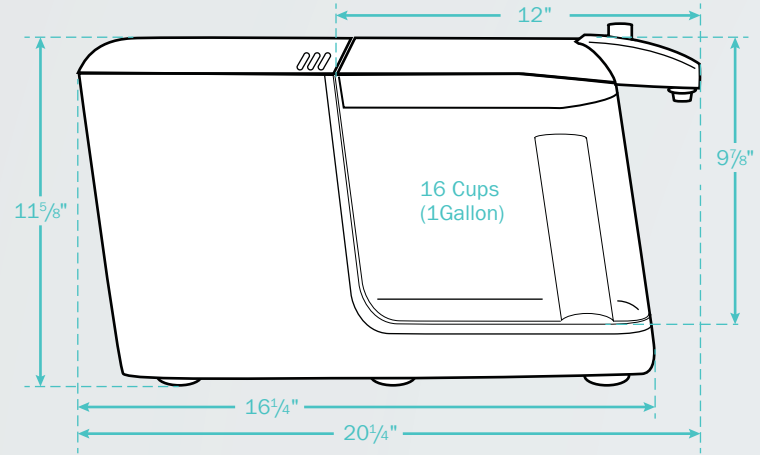
- To clean the filter unit, wipe exterior with a damp cloth.
- The dispenser lid is NOT dishwasher safe and should be hand washed only.
- The clear dispenser body is dishwasher safe. DO NOT use the heat cycle of the dishwasher to dry.

## Precautions

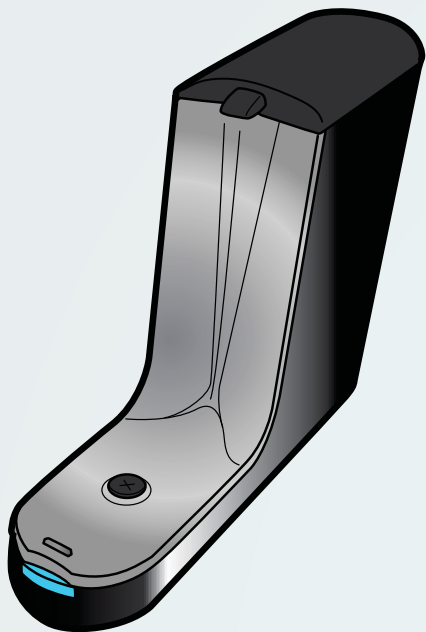
- Do not operate without filter cartridge installed.
- Use only with cold water.
- Children should not operate without supervision.
- Do not use with water that is microbiologically unsafe or of unknown quality without adequate disinfection before or after the system.
- Systems certified for cyst reduction may be used on disinfected waters that may contain filterable cysts.

## Operating Specs:

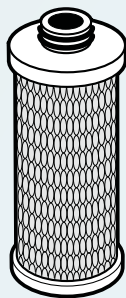
- Temp range: 40-90° F (4.44-32.2° C).
- Rated flow rate: 0.5 gpm (1.8 lpm).
- Capacity of filter: 320 gallons (1,211 l).
- Pressure: 20-70 psi (137-482 kPa).
- Voltage: 100-240.



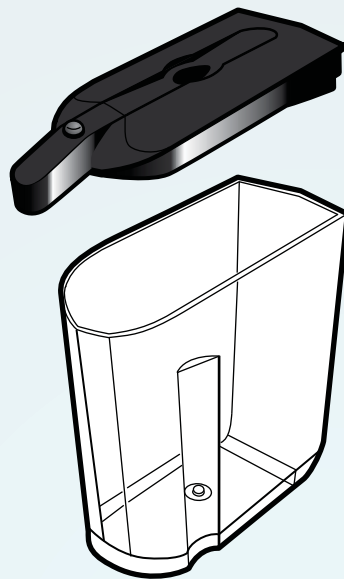
## Contents



Filtration  
Dock



Claryum®  
Filter

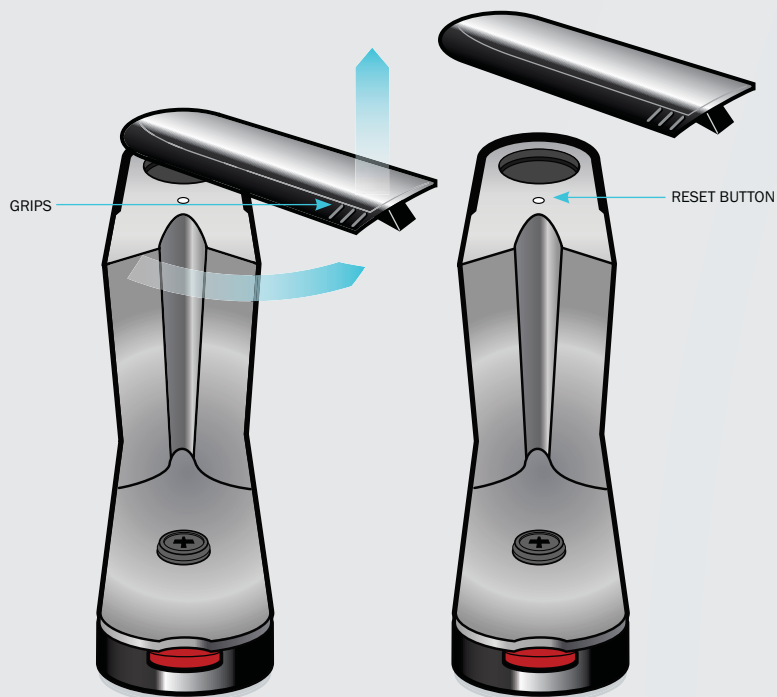


Dispenser  
with Lid



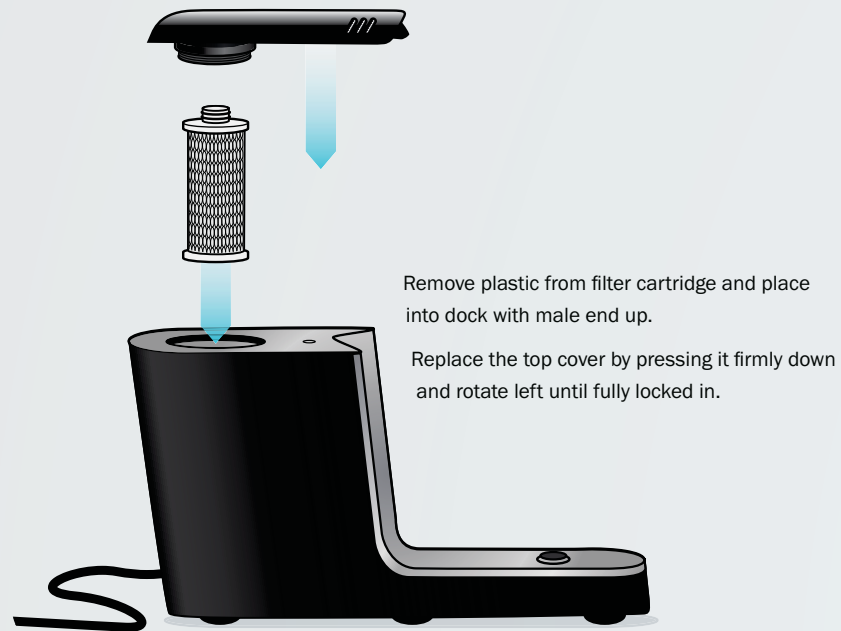
1 Liter Carafe  
(Not part of NSF Certification)

## Install the Filter



With filtration dock facing forward, use grips on the left side of the top cover to slide to the right until it lifts up and off.

Watch A Setup  
Video Online  
[aquasana.com/cwmsetup](http://aquasana.com/cwmsetup)



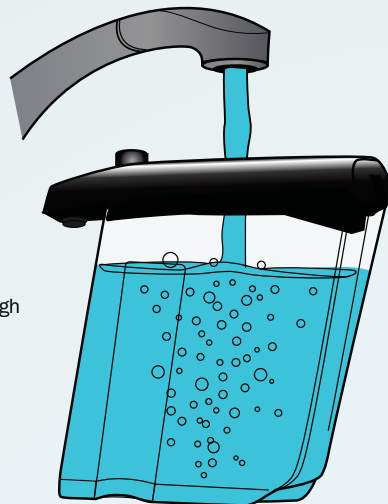
Remove plastic from filter cartridge and place into dock with male end up.

Replace the top cover by pressing it firmly down and rotate left until fully locked in.

Once filter is installed, plug filtration dock into an electrical outlet.

## Flush the System for one Cycle

- Place lid on dispenser.
- Fill it with cold water through drop-shape.
- Place on the filtration dock until fully locked in.
- Hold dispenser button down until all water has filtered through the unit. Discard water. Flushing is complete.



To dispense filtered water, push button on reservoir lid. There will be a 5-10 second delay for water to filter through.

Please wait for system to finish filtering before removing the dispenser from the dock.

Once dispenser is removed there may be residual water left on the dock; this is normal.

**Please note:** Water may leak from circular valve when placing dispenser onto dock.

