

# LIVING IN I'ON

It's a way of life, not just a place to call home

## You're Invited

12/02 Lunch Bunch  
12/03 First Friday  
12/05 The Giving Lights/Holiday Festival  
12/14 Women's Coffee  
12/15 Potluck Dinner  
12/15 Yarn Buddies

## Other Important Dates

12/02 Recycling Pickup  
12/16 Recycling Pickup  
12/28 IDC Submittal Deadline  
12/30 Recycling Pickup

## Creek Club Dock Closures

12/03 3:55 - 4:25 pm  
12/04 3:55 - 4:25 pm  
12/05 3:55 - 4:25 pm  
12/12 4:25 - 4:55 pm  
12/17 5:25 - 5:55 pm  
12/31 4:25 - 4:55 pm

## I'On Board Meetings 2021

On the following date at 6:00pm:

Dec. 20



## HOLIDAY FESTIVAL OF GIVING SUNDAY, DECEMBER 5

**Glowing luminaries will line the streets of I'On in celebration of the holiday season and the culmination of The Giving Lights fundraiser!**



**5:30pm -Light your luminaries**

**6:00pm - Presentation of the proceeds of The Giving Lights of I'On to East Cooper Community Outreach, ECCO**

**After check presentation we will have hot chocolate, wine for the adults, cookies, holiday music and a very special visitor from the North Pole!**

**6:15pm - Horse-drawn carriage rides begin to view the luminaries. Carriage rides are free. You will be able to sign up for a carriage ride time through a link on an email blast sent December 1 at 11am. Carriage rides continue during the evening with the last carriage at 8:30pm**

**Looking for a direct line to jolly ol' Saint Nick?**

**Don't forget to bring your Letters to Santa!**

During the Holiday Festival we will have a Santa Mailbox at Westlake Amphitheater for your little ones to send their letters to Santa Claus. Encourage them to put a return address on those letters! After the Holiday Festival of Giving, the letters to Santa mailbox will relocate to the porch of Bakies of I'On at the corner of N Shelmore and Sowell, 264 N Shelmore. You may continue to drop off your letters to Santa and grab a cookie too!



---

## You're Invited...

---

### ...Lunch Bunch

Thursday, December 2, 12pm

Burton's Restaurant, 1875 US-17,, Hosted by Maribel Lopez

November Lunch Bunch is on Thursday, December 2, 2021 at Burton's Restaurant at 12 noon. Please join us and get to know, or know better, your neighbors! Everyone is asked to follow current CDC guidelines and wear a mask until seated. RSVP to Maribel at [mlopez@lopezresearch.com](mailto:mlopez@lopezresearch.com). Question? Contact [Barbara Fowler](#) or [Dale Brokaw](#).

### ...First Friday

Friday December 3, 6-8PM

174 North Shelmore Blvd (indoors), Hosted by Vicky Wynn

Many thanks to Jane Sheehan for hosting our November First Friday. It was drizzly outside, but what a great evening we had. Come meet some new neighbors, or catch up with dear friends - always a fun event.

No need to RSVP. Just remember to bring your own libations, drinking glasses and a small appetizer for all to share. Our hostess has requested that all guests be fully vaccinated.

We still have openings for February, August, November and December 2022 (thank you Regina Condry and Harris Myers for offering to host in March!) - please contact Wendy Nixon at [203.858.7909](tel:203.858.7909) if you would like to host a party - our committee will make it easy for you! Your FF volunteers - Karen Rathbun, [Wendy Nixon](#), Rossie Spell and Kari Roevers.

### ...Women's Coffee

Tuesday, December 14, 10 am - noon

At the home of Michelle McQuillan, 194 North Shelmore Blvd.

'Tis the season for the annual holiday tea. Our holiday tea is a special I'On tradition that you won't want to miss. Bring your favorite, perhaps inherited, tea or coffee cup and stories to share of holiday traditions from your family or heritage. Enjoy a reading from "A Cup of Christmas Tea."

This will be an indoor event and for the safety of all we request that you be fully vaccinated or wear a mask. Women's coffees are sponsored by the I'On Trust.

No RSVP needed, but if you would like more information call coordinators Susan Fitzgerald at 703 402 3298 or Joyce Stifel at 574 276 5000.

### ...Yarn Buddies

Wednesday, December 15, 10 am - 11:30 am

Hosted by Lesley-Ann Read, 121 Ponsbury

Anyone interested in the needlework arts and hand-crafting endeavors is welcome to attend. Please email Lelsey-Ann at [lafread@hotmail.com](mailto:lafread@hotmail.com) or text to 203-417-5144 if you are able to attend

### ...Potluck Dinner

Wednesday, December 15, 6:30 at the Creek Club

Hosted by Amy Minella and Wendy Nixon

Come celebrate the holiday season with neighbors. Please join us for a delightful evening overlooking Hobcaw Creek and the marsh! Plan to arrive at 6:30, and bring a dish (with serving utensil) to share, along with your own plate, utensils, a beverage and glass. There are no rules that you must personally cook what you bring; there are a number of excellent local options if you are pressed for time.

Please encourage new neighbors to join us...Potluck is a great opportunity to make new friends and catch up on neighborhood news. And don't be shy....you'll find dinner partners aplenty once you arrive. No reason to hesitate to arrive solo !

For further information or questions, email [Lydia Engelhardt](#) or call 843-884-8400.

We REALLY hope to see you there.



**...Based on polling of regular Potluck attendees. we are requesting that all guests be fully vaccinated.**



## This Month with The I'On Trust...

### The Giving Lights Luminaries

---

We want to thank all our I'On neighbors for supporting this year's Giving Lights of I'On - it is one for the record books! Be sure to join us for the celebration and to find out the total amount raised and presented to East Cooper Community Outreach, ECCO. (Details of the evening's celebration on the cover page).

If you missed The Giving Lights deadline for luminaries and would still like to participate, you may purchase a luminary kit or make a donation online at [iontrust.org](http://iontrust.org). Kits may be purchased through Friday, December 3.

**Sand for your luminaries will be available by Thursday, December 2** at the end of Mobile Street. One red container at the sand pile will be enough sand to fill one luminary kit (12 bags). **Please remember the sand is available for all neighbors to make their luminaries, please only take the appropriate amount of sand needed to build yours.**

**Whether you are on a carriage or just walking around I'On,  
we hope everyone will be out to enjoy the luminaries.  
It certainly will be a magical evening in I'On!**



**HAPPY HOLIDAYS!!**



### Perseverance Square Brick Engraving

---

Michele Wilson has offered again this year to spearhead the Brick Engraving Project at Perseverance Park for 2022. We are delighted that she continues to be enthusiastic and committed to this opportunity for neighbors.

For those of you unfamiliar with this wonderful I'On tradition, the project began in 2004 and now over 500 bricks have been engraved surrounding the fountain in Perseverance Square. Names of I'On residents, dear friends, and beloved pets along with those who have made a difference in someone's life or who have contributed to the community can be found on the bricks there.

Orders can be placed now (a special holiday gift?) through March 10th, 2022. Engraved bricks will be installed in April of 2022.

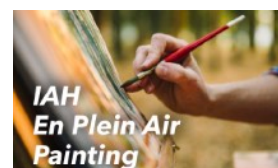
Each brick costs \$35 and can be engraved with up to 3 lines, 13 characters per line. You may place your brick order by clicking [\*\*HERE\*\*](#).



*A community of friends enjoying enriched, vibrant and independent lives together*

As we move into the holidays, we're happy to announce that I'On At Home now has 166 members. While we all recognize that great programs, cultural events and our volunteer services make membership worthwhile, we know that the support of each and every one of our members is the critical element to our success and future. And we are very grateful for that support.

Here are a few of the events and activities that our members are enjoying in December.



***If you're 55+ come join I'On At Home and become a part of our exciting adventure.***

Contact Mary Holtz, IAH Administrative Manager: [maryh@ionathome.org](mailto:maryh@ionathome.org)

or visit us at: <https://ionathome.helpfulvillage.com>

## *I'on Community Garden*

### **Team I'On – LOWVELO 2021**

For a third year running, Team I'On participated in LOWVELO, a Hollings Cancer Center fundraising event. This year's team members, Len Hanson, Peg Higgins, Penny Leighton, CJ Pelletier and Dick Stifel, would like to thank the many I'On residents who supported this worthwhile cause. Thus far, \$6,652 has been raised!



### **The Countdown Begins: SignUp for a Community Garden Plot Starts on January 1, 2022**

Think about how nice it would be to grow your own fresh organic vegetables, herbs, and flowers in a beautiful, sunny location. If your yard is too small or too shady, I'On's Community Garden on Eastlake Rd is just the place you are looking for. Signup for 5' x 8' garden plots for 2022 begins on January 1. Plots are available on a first come, first serve basis to I'On residents, and they are usually gone by the middle of January. So don't delay reserving a space. For only \$75, plots are amended annually and mulched pathways, perimeter fencing, and water are provided along with detailed garden and planting guides. The garden is open for planting in mid-February, and our growing season is year-round, which means you can enjoy those summer tomatoes and winter greens as well.

Sign up individually, as a family, or partner with someone else. Gardening is a great way to meet your neighbors, enjoy a wholesome family outdoor activity, and get some healthy exercise. Come join us. Have questions? Contact April Gordon at [dr.aprilgordon@gmail.com](mailto:dr.aprilgordon@gmail.com).

To sign up for a plot in January, send an email to [iongarden@gmail.com](mailto:iongarden@gmail.com) and request an application form.



**Spring is a Beautiful Time to Work in the Garden**

## *Butterfly Garden*

### **Where Do Butterflies Go in the Winter?**

As we move into December's colder weather, there are far fewer butterflies visiting the Butterfly Garden. An occasional Monarch on milkweed flowers, Gulf Fritillaries on tattered patches of passionvines, a few Skippers on asters, and Cloudless Sulphurs enjoying the nectar of scarlet salvias are what remain of the butterflies of summer. Soon, once freezing temperatures arrive, both the flowers and the butterflies will be gone.



**Cloudless Sulphur Butterflies feed on Nectar from Scarlet Salvia well into December**

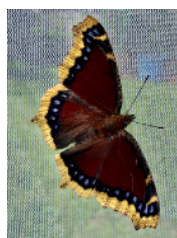
But where do the butterflies go? I have been asked this question by curious garden visitors. Are they like Monarchs that migrate yearly to Mexico? Do they hibernate locally and wait for spring? The answer is yes and yes, depending on the kind of butterfly and what stage in their life cycle they are in.

Let's start with migration. The most famous migratory butterfly is the Monarch, which in the eastern part of North America migrates yearly to and from Mexico (although smaller populations overwinter in Florida and even coastal South Carolina). But only a minority of butterflies migrate and for shorter distances. These include both Gulf and Variegated Fritillaries, Cloudless Sulphurs, and American and Painted Ladies – all visitors to the Butterfly Garden. Most of these spend the winter in Florida or Mexico, and their descendants return North in the spring.

Less well known are the butterflies that overwinter in a dormant state; these are a large majority of butterfly species. How they spend the winter depends on where they are in their life cycle: either as an egg, a caterpillar, a pupa (chrysalis), or adult. Red Banded and Coral Hairstreaks are examples of butterflies that overwinter as eggs, which are laid in leaf litter on the ground or at the base of their host plant. When the weather warms in the spring, caterpillars emerge from the eggs and begin feeding on nearby host plants. Some butterflies, such as Red Spotted Purples or Eastern Tailed Blues, overwinter as caterpillars buried in leaf litter or soil, in seed pods, or on the leaves of plants. As the weather warms, they begin feeding and growing. As pupae (chrysalises), overwintering butterflies are attached to overhangs or deep in shrubbery (I have found chrysalises attached to an Adirondack chair, my house, under the stairs, and on a citrus tree branch.) Tiger, Black, and Giant Swallowtails and Spring and Summer Azures overwinter in the chrysalis stage and emerge as butterflies in the spring or early summer when nectar flowers are available. A minority of overwintering butterflies are adults, including Question Marks and Commas, Sulphurs, Buckeyes, and Mourning Cloaks. They seek shelter in cracks in rocks or tree bark, in log or brush piles, or in tree or shrub cavities. As adults, they are the earliest butterflies to be seen in late winter or early spring in our area.



**This Giant Swallowtail Chrysalis Overwintered on a Container Citrus Tree and Was Discovered in Late Winter**



**The mother of this gorgeous Mourning Cloak butterfly was found in early March 2021 laying eggs on its host plant, a willow shrub. A few of the eggs were hand raised in a butterfly cage, and this was one of the butterflies that resulted.**

Our butterfly garden is designed and managed to promote the welfare of butterflies during all seasons of the year, including winter. If you visit the garden in December, you will notice that most of the plants are left standing with flowers on them, even if they are dead. Leaf litter, plant stems, and brushy areas are found in and around the garden area. What might appear to be neglect is in reality best practice for helping overwintering butterflies and other creatures survive in our garden ecosystem. April Gordon ([dr.aprilgordon@gmail.com](mailto:dr.aprilgordon@gmail.com))

## Welcome New Neighbors

A big welcome to the newest I'On families! Make sure to stop by, and introduce yourself.

- Greg Amstutz & Mary Dalrymple - 213 N Shelmore Blvd
- Jon & Lisa Galane - 11 Eastlake Road
- Monica & Casey Lavin - 87 Secession St

Moving Around I'On:

- Michelle & Shane Doran - 177 Ponsbury Road
- Danielle & Matt Marin - 89 Jane Jacobs Street

## COMMUNICATIONS COMMITTEE

Julie Hussey, Communications Chair  
 Kathie Haas, Living In I'On Editor  
 Mary Kaplan, Ambassador Chair  
 Lisa McFadden  
 Danielle Marin  
 Margaret Summers, I'On Trust  
 HOA Managers, Ravenel Associates:  
 Mary Fraser & Emily Simpson

### Comments, Questions?

The Communications Committee wants to hear from you! Click [here](#) to submit your questions, comments, and requests. It's always a pleasure to hear from a Living In I'On reader!

## *From the HOA.....*

### 2021 ANNUAL MEETING AND HOA BOARD ELECTION

The 2021 Annual Meeting is scheduled for Wednesday, January 26, 2022 at the Creek Club. HOA Board elections will take place at this time, with online voting and proxy collection taking place prior to this date. Please be on the lookout for the annual meeting mailing coming to your mailboxes towards the end of December, as well as an email blast announcing when online voting will be live!

### Holiday Concert

A free holiday concert is planned for 7:00-7:45 Friday, December 17th at Holy Ascension Orthodox Church, 265 N Shelmore Blvd. Hot cider and cookies to follow. This is open to all I'On residents.

