



# LIVING YOUR PURPOSE

 FORWARD EDGE

2017 ANNUAL REPORT

“For we are God’s masterpiece, created in Christ Jesus to do good works, which God prepared in advance for us to do.”

— EPHESIANS 2:10

**TABLE OF CONTENTS**

4 ..... Letter from the President  
6 ..... Mission and Vision  
8 ..... Community Development  
10 ..... Your Impact

**Program Snapshots**

14 ..... Nicaragua  
16 ..... Mexico  
18 ..... Haiti  
19 ..... Kenya  
20 ..... Cuba  
21 ..... Disaster Recovery  
  
24 ..... Empowering the Church  
27 ..... Sell a Home, Save a Child  
28 ..... Inspiring Life-Changers  
30 ..... Financials and Accountability  
34 ..... Forward Edge Team

First thing’s first: YOU matter. God thinks the world of you. You have great value, and He made you for a purpose: to make a difference. When you invest in the lives of others, you are living your purpose.

Celebrate what God is doing through you and thousands of others in this 2017 annual report. See how you living your purpose is helping thousands of impoverished children and disaster victims live theirs.

# LETTER FROM THE PRESIDENT

From its founding in 1983 (2018 is our 35th year of ministry!), Forward Edge International (FEI) has been fueled by the conviction that God designed every person to make a unique and significant contribution to His purposes in the world. As it says in Ephesians 2:10: “We are God’s masterpiece, created in Christ Jesus for good works, which God prepared in advance for us to do.”

For the first two decades of our history, this conviction applied primarily to volunteers serving on our short-term mission teams. By helping them put their faith into action, we created opportunities for them to hear the call God had on their lives...to believe—perhaps more deeply than ever before—that He could use them to make meaningful contributions to His purposes. And these same opportunities exist to this day.

What has changed over the past 15 years is the number of people we’re helping to hear and respond to God’s call. In addition to those participating on our mission trips, there are now thousands of vulnerable children and adults—in Nicaragua, Mexico, Haiti, Cuba, and Kenya—empowered through Forward Edge to discover and pursue their God-given destinies. **So, while our mission is the same, the number of people impacted has dramatically increased.**

**213,502  
nutritious  
meals served**

This annual report reflects the scale of that increase. Consider the following statistics from 2017 alone: 22,564 children and adults impacted by our programs in the U.S. and five foreign countries; 213,502 nutritious meals served; 2,094 children provided with educational support; 1,403 people receiving spiritual discipleship; and 4,012 people presented with the Good News of Jesus Christ.

**2,094 children  
provided with  
educational  
support**

And these are more than just numbers. They are faces and names. They’re Ileana, Katherine, and Emely—formerly at-risk girls living at *Villa Esperanza* in Nicaragua—now studying to be nurses. They’re Berenice in Oaxaca, Mexico, the first child in our *Trigo y Miel* program to graduate from high school and go on to college. They’re Wendel in Haiti who is now eagerly sharing his newfound faith in Jesus with 48 family members. And they’re Ana Paula, a precious, young girl with Downs Syndrome, whose new passion in life is building relationships with other children at our feeding and discipleship program in Cuba.

But perhaps the most exciting thing about our programs in other countries is the fact that their impact is not just limited to children. In a very real sense, the children are entry points into the larger community, which includes both family members and non-relatives. As a result, many

in these communities not directly involved with our children’s programs benefit from things like access to safe drinking water, urgently needed health care, vocational training, and sustainable livelihoods.

None of this good work happens, though, without opposition. The 60-plus nationals and five missionaries who serve on our field staff face all kinds of obstacles, from political and social unrest to pervasive spiritual warfare. In 2017, for example, one of our country directors was actually assaulted by a gang of local thugs trying to extort money. But, by God’s grace, he was able to rally members of the community to oppose this gang—a response that resulted in him being elected “community president.”

In 2017, challenges also came in other forms. Some girls at *Villa Esperanza*, for example, decided to leave the program under less-than-favorable circumstances (usually to pursue ill-advised relationships with boys). For every “failure,” though, there are five successes (see Katherine’s story on page 15), and even those who spurn the opportunities we offer have seeds planted in their hearts that may one day bear fruit—just as we hope for some of our own children. As it says in Scripture, “God’s Word does not return void,” (Isaiah 55:11).

Looking to the future, one of our top priorities in 2018 is to strengthen our partnerships with U.S. churches and form new ones. Through these partnerships, we desire to help churches impact a specific community more deeply over an extended period of time. I’m also currently developing a “faith in action” e-course designed to help U.S. and Canadian believers discover their gifts and passions in order to use them for service in their home churches and communities. This course will

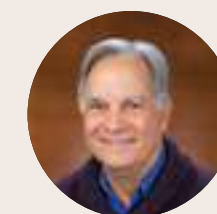
become part of a more comprehensive partnership plan with churches that also includes mission trips, child sponsorship, and community development opportunities.

In 2018, Forward Edge is also pursuing some “big, audacious goals.” These include impacting more than 30,000 children and adults; serving more than 250,000 nutritious meals; providing more than 2,500 children with educational support; reaching more than 6,000 people with the Gospel and spiritual discipleship; and mobilizing more than 785 short-term volunteers. This will result in scores more at-risk children having opportunities to pursue God’s call on their lives; dozens of disaster victims having their homes and lives restored; and hundreds more short-term volunteers discovering in a deeper way who God is, who they are, and what God can do through them.

**4,012 people  
presented with  
the Good News  
of Jesus Christ**

If you’re already engaged in God’s work through Forward Edge, THANK YOU for being a vital part of all He’s doing through this ministry. If you’re not yet involved but interested in finding out more, I hope you’ll give us a call or send us an email. We’d love to share with you how you can find meaning and higher purpose by investing your time, talent, and/or treasure in God’s work through Forward Edge!

**In 2018,  
Forward Edge  
is also pursuing  
some big,  
audacious goals.**



**Joseph Anuso**  
Founder and President  
Forward Edge International

# OUR MISSION

Partnering with God to transform the lives of vulnerable children, disaster victims, and those who go to serve them.

# OUR VISION

To see vulnerable children cared for, disaster victims restored, and everyone involved with Forward Edge discovering and pursuing God's plan for their lives.

Over the past 35 years, more than 33,000 people have helped transform the lives of vulnerable children and disaster victims through Forward Edge International.

# WHAT IS THE FORWARD EDGE?

When God directs people to put their faith into action and they respond with obedience—even without knowing what lies ahead—they are stepping onto life's forward edge.

# HOW WE APPROACH COMMUNITY DEVELOPMENT



## HERE'S HOW IT WORKS:

1

### IDENTIFY NEEDS

We invite community members to come together to discuss and define their own needs.

2

### PLACE SEEDS

We draw out each need (for those who can't read) and, together, they prioritize them by placing seeds (votes).

3

### WHAT THEY CAN DO

They define how those needs can be solved. Then we help them decide which ones they can solve on their own, and which ones they can't.

4

### BUILD A PLAN

Together, we develop a plan for solving these needs, and where Forward Edge might be able to help.

After a plan is built, it often takes years to implement it. Some of the larger needs (unsafe drinking water, unemployment, etc.) require significant resources to solve. Every year, we meet with the community again to discuss our progress on the plan, and if needed, reassess the current needs.

When entering a foreign community with our own perspectives on optimal living, it's easy to invest time and money into "fixing" something that doesn't need to be fixed, or answering a question that was never asked. Not only is that a misuse of resources, it's also not respecting the opinions, lives, and insights of those we're seeking to help.

The key to helping without hurting when serving people suffering from material poverty is always asking first: What do *you* have to say about your needs, and possible solutions?

That's why, early in the process, Forward Edge leaders conduct what we call a "10 Seed Assessment." This is a tool created by one of our board members, Dr. Ravi Jayakaran, that has been used for decades by leading community-development organizations.



One great example of a need identified and solved through this process was the construction of a walking bridge in Oaxaca, Mexico (with the help of the Messiah College Collaboratory program in Mechanicsburg, PA) that spared children from a dangerous and time-consuming commute to our program, *Trigo y Miel*.

# YOUR 2017 IMPACT

THROUGH FORWARD EDGE INTERNATIONAL



Lives Impacted\*  
**22,564**

\*children served and their immediate families



Locations  
**Baltimore, Cuba,  
Haiti, Kenya,  
Mexico,  
Nicaragua,  
Puerto Rico**

Financial  
Supporters  
**1,636**



Children who  
academically  
graduated to the  
next level  
**738**



People who received  
sustainable  
livelihoods  
**308**

Children who  
committed to  
sexual purity  
**2,155**



Mission Trippers  
**524**



People who  
received free  
healthcare  
**1,144**

Children who  
academically  
graduated to the  
next level  
**738**

New believers  
baptized  
**125**



People presented  
with the Gospel  
**4,012**

Funds raised in  
response to  
Hurricanes Harvey  
and Maria  
**\$74,000**



Nutritious meals  
served  
**213,502**



Children who  
received educational  
support  
**2,094**

People who  
received spiritual  
discipleship  
**1,403**



Mission Teams  
**38**

Value of donated  
professional and  
non-professional  
services  
**\$530,000**



People who  
received safe  
drinking water  
**1,602**

Child Sponsors  
**542**

“If I could relive my life,  
I would devote my entire  
ministry to reaching  
children for God!”

— DWIGHT L. MOODY





# NICARAGUA

30 Girls

*Villa Esperanza (Hope Village), Managua*

2,998 Children

*Villa Community Outreach*

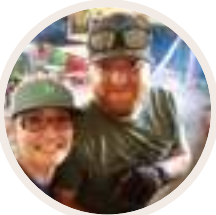


### MEET KATHERINE, EMELY, AND ILEANA

Katherine, Emely, and Ileana are three young women who live at our home for at-risk girls in Nicaragua and are following God's call on their lives into a profession of caring for others. All three girls are attending nursing school at a local military college. It's a rigorous program, but these girls are dead-set on rising higher than their difficult childhoods. With your help, they're creating a future defined by freedom from spiritual and material poverty, for themselves, and their future families.



For years, the leadership at *Villa Esperanza* had a vision to build a Life Skills Center that could be used for vocational training for the girls in the program, their families, and other members of the community. After generous partners like you contributed more than \$180k, the dream of this center was finally realized in 2017. The *Villa* Life Skills Center now provides a place for computer training, tutoring, English classes, spiritual discipleship, micro-business ventures, various vocational trainings, and much more!



“ We feel so blessed to have the opportunity to sponsor Katherine and Emely! We were able to meet these special sisters during our mission trip to *Villa Esperanza* in January and had an instant bond with them. Seeing firsthand the work that God is doing in their lives is so amazing!”

MATT AND MERRILEE CORNIA, KATHERINE AND EMELY'S SPONSORS



We're also excited to present our first married program graduate! Katherine was rescued from the city dump nearly 10 years ago and entered *Villa Esperanza* when it first began. Since then, she has worked tirelessly to pursue God and His purposes for her life. Through the support of the *Villa* and her sponsors, Katherine graduated high school, is now in college, and in December, entered a marriage founded on Christ, which is sure to change her family's future for generations to come!





# MEXICO

140 Children

Trigo y Miel (Wheat and Honey), Oaxaca



### MEET BERENICE

Berenice was the first child to graduate high school in our Oaxaca children’s program! She has worked hard to achieve this dream, and with the continued support of her sponsors, she was able to begin studying Business Administration at a university last fall. Berenice and her five siblings, along with their parents, were also provided with a safe, new home this year (story on next page). Your support gives children like Berenice a safe place to call home and the tools they need to build a brighter future!



“ In the words of our daughter: ‘Sponsoring Berenice and meeting her family is one of the best experiences we have been a part of.’ Berenice and her family are now part of our family. To support Berenice in fulfilling her dreams is a blessing from the Lord.”

THE STANTON FAMILY (ART, AMY & ALEXIS), BERENICE’S SPONSORS

To help combat the staggering 53.2% poverty rate in Oaxaca, Forward Edge missionaries, Tom and Wendy Hogan, developed a business that provides dependable, affordable homes and stable jobs for local families. Your generous support helped us purchase an earth-block-making machine in 2017 and launch this business called Operation Enduring Homes. In partnership with Elevate Church in Vancouver, WA, we were also able to build our first “earth block home” for the Santiago family whose six children attend our *Trigo y Miel* program.

### AND THIS IS ONLY THE BEGINNING OF THE IMPACT YOU’RE MAKING

We already have a list of families awaiting new earth block homes; homes we can now build for only 33 cents a brick!



# HAITI

300 Children

*Kid's Club, Vernet*



# KENYA

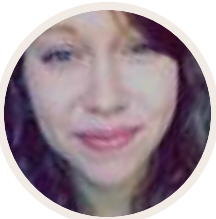
95 Children

*Mama Beth's, Kijabe*



### MEET WENDEL

Nine-year-old Wendel joined our program in 2017 and found food for his body and soul. For the first time, he received regular nutritious meals and the love of Jesus Christ. Excitedly, he brought his new faith home to 48 other family members (all in one, three-bedroom home!), and recruited many of his siblings to join him in the program. Your support builds faith in children like Wendel, who in turn reach out to others, creating a ripple effect building God's Church.



“Wendel is such a sweet young man. It is admirable to meet a young child who has so little in earthly possessions, yet is so rich in heavenly wealth. Wendel's heart is overflowing with such love and radiance—he is a true little light of Christ. Christ instructs us in His word to have a childlike faith and Wendel has been an incredible blessing to display that in my life and help me to better understand what it means to have the faith of a child. I am so thankful for Wendel's beautiful heart and am very much looking forward to continuing to get to know him and bless each other's lives.”

GABRIELLE CLAPPER, WENDEL'S SPONSOR



### MEET PURITY

Purity and 29 other children from a local primary school were welcomed to join our daily feeding program in the midst of a devastating drought in the winter and spring of 2017. The drought was declared a national disaster and many families suffered from severe food shortages. Members of our program for Real Estate professionals called Sell a Home, Save a Child responded with funds to add these 30 precious children to our feeding program. Purity and many others were saved from the effects of the famine because of generous supporters like you!



“Knowing that my small life is making a big impact and feeding and sustaining the lives of kids around the world brings me to tears and is as humbling as it gets. God has called us to take care of the poor and needy, and knowing Forward Edge is on the front lines doing that allows me to continue to jump in head first and back them 100%.”

TYLER HEINS, SELL A HOME, SAVE A CHILD MEMBER



# CUBA

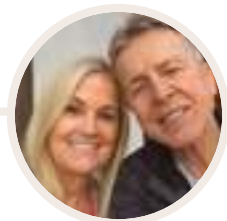
115 Children

El Cobre Community Baptist Church



## MEET ANA PAULA

Ana Paula has Downs Syndrome, which makes communication with other kids difficult. Through our regular feeding program, she has grown by leaps and bounds in her ability to build relationships with other children and adults. Her parents are overjoyed to share that her passion is now having lunch at the church! Your impact goes beyond meeting basic needs to the interpersonal development of treasured little ones like Ana Paula, helping them thrive.



“It is such a privilege to give to these precious ones. We can’t think of anything that would have higher priority. Thank you, Forward Edge for providing the opportunity, and we do put our trust in you for the guardianship of these little ones.”

RICHARD AND LOIS BROSIUS, CHILD SPONSORS

# DISASTER RECOVERY



## 83 PEOPLE SERVED DISASTER VICTIMS

on Forward Edge mission teams in 2017. For most of the year, these teams served flood victims in West Virginia and Louisiana, helping people like Pastor Charles Swiney and his family of eight. Local flooding brought more than eight feet of water into their home, and these teams helped them gut their house and rebuild the walls. The highlight of their renovation came when two of his granddaughters returned from school one day, came inside, and then ran back outside exclaiming, “Come in the house to see this! We have walls again!”

## OUR FIRST OF MANY HURRICANE HARVEY RECOVERY TEAMS

to Houston served a little community called Patton Village in November. This team began work on a new home for an elderly man named Pedro who had been living in his car and showering at the local courthouse for two months since the storm. He and everyone else on his street lost their homes when FEMA deemed them uninhabitable and had them bulldozed. Many more teams are on their way to help Pedro and others like him in 2018.



“Never doubt that a small group of thoughtful, committed citizens can change the world. Indeed, it is the only thing that ever has.”

— MARGARET MEAD



# EMPOWERING THE CHURCH



*We believe God ushers in His Kingdom through His Church, so our desire is to be a ministry that supports the work of the Church in all the countries where we serve. In 2017, we were honored to partner with 22 U.S. churches and Christian schools.*

“Forward Edge’s short-term trips have allowed our people to understand God’s global vision for the Church while fostering healthy community.”

—Penny Stady  
Global Director, Hear The Cry, Portland, OR

“Partnering with Forward Edge has given us the opportunity to support the amazing ministries of those in Oaxaca, Mexico while seeing our own church family grow and be transformed as they give and serve.”

—Pastor Steve Parrish  
Elevate Church, Vancouver, WA

## OUR STRATEGIC COMMUNITY PARTNERS

Strategic Community Partners (SCPs) are churches and schools that build long-term, strategic relationships with disadvantaged and under-resourced communities, facilitated by Forward Edge International. For more information, visit [Churches.ForwardEdge.org](http://Churches.ForwardEdge.org).



Barton Church from Boring, Oregon sent two teams through Forward Edge in 2017 to serve flood victims in Louisiana and impoverished children in Cuba.

### *Christ Church*

For the past couple years, Christ Church in New Jersey has sent “fatherhood teams” to serve Nicaraguan men associated with our programs. Many men have described their support and training as transformational.



Last fall, Clothe Your Neighbor as Yourself (CYNY), out of Embrace Church in South Dakota, raised more than \$12,000 for uniforms and medical care for the children in our Oaxaca program. They raised this support through a cutting-edge, virtual-reality-video experience made possible by their Neighborly app.



Smithtown Christian School in New York sends a team of students to a different Forward Edge program every year where they share the Gospel and minister to local communities through music and drama performances.



## OUR CHURCH AND SCHOOL MISSION-TRIP PARTNERS

The following churches and schools partnered with Forward Edge to impact the lives of vulnerable children and disaster victims through meaningful mission trips. Many of them partner with Forward Edge annually.

Centerpoint Church, Massapequa, NY

Simpson University, Redding, CA

Living Hope Christian Church, Bellerose, NY

South Bay Church, San Jose, CA

North Coast Calvary Chapel, Carlsbad, CA

The Rock of Roseville, Roseville, CA

Northwest Christian University, Eugene, OR

“We are so grateful for our partnership with Forward Edge because it has opened doors for us to gain an understanding and make friendships in a place we never would have the opportunity to!”

—James Barnett

*President of CYNV, Sioux Falls, SD*

“By partnering with Forward Edge and Villa Esperanza in Managua, Nicaragua, we’ve been given first-class missions experiences that have completely invigorated the 24/7/365 missional focus of our high school students and families.”

—Pastor Paul Bammel

*Eastminster Presbyterian Church, Wichita, KS*

“Through our partnership with Forward Edge, we’ve been able to provide transformative opportunities for our students to serve in Haiti over the past five years, leading to growing hearts for the people of Haiti, students who have a whole new perspective on life, and a campus that’s connected to and cheering for the communities in Haiti that are partnered with Forward Edge.”

—Amy Dickerson

*Concordia University, Portland, OR*

# SELL A HOME, SAVE A CHILD

Sell a Home, Save a Child (SAHSAC) is a movement of Real Estate professionals helping materially poor and vulnerable children through Forward Edge by raising funds through monthly memberships and special events.

In 2017 alone, Sell a Home, Save a Child raised more than \$286,000. These funds helped cover costs for children without sponsors in Cuba, Haiti, Kenya, Mexico and Nicaragua; contributed to the launch of a new program in Cuba; added a sixth day to our feeding program in Oaxaca, Mexico; provided tuition support for 46 children in Kenya; fed 30 extra Kenyan children during a devastating drought; and much more.



Erik Hatch, owner of Hatch Realty, and co-founder of SAHSAC, hosted a golf scramble last summer among his clients and business partners. Together, they raised \$16,723 for children in Forward Edge programs. Erik and SAHSAC co-founder, Nick Shivers, also raised more than \$50k for Forward Edge children at a Real Estate conference in May!



Nick serving on a team to Nicaragua.

Real Estate mogul, Nick Shivers, consistently creates inventive ways to raise money for Forward Edge in his industry. For example, at Forward Edge’s Banquet last October, Nick announced that for anyone who signed up to sell their home through his company, WestOne Properties, he would donate all of his commissions to Forward Edge. This generous gesture resulted in raising more than \$30,000 for our children’s programs!

For more information, visit [sellahomesaveachild.org](http://sellahomesaveachild.org)

# YOU ARE A LIFE-CHANGER

*Every act of service and sacrifice you made to advance God's mission through Forward Edge in 2017 is inspiring. Here are just a few of your stories that have been shared with us throughout the year.*



**In 2006**, Tim Eller (above left) joined a Forward Edge Hurricane Katrina relief team to Mississippi. While serving, he committed his life to Christ and was baptized by a local church leader, Bishop Cunningham. Their relationship grew into a deep friendship and was a gift that continued to give when the Bishop found he needed a kidney transplant 10 years later—and that Tim was the perfect match. We never know when God's plan for a mission trip will go beyond the people we meet and serve in the moment. This photo was taken after the successful surgery in 2017.



Last summer, 18 volunteers participated in the famous Portland To Coast and Hood To Coast: Washington relay races. These two teams raised \$8,200 towards building earth block homes through our Operation Enduring Homes project in Oaxaca, Mexico.



Mark Johnson is the owner of Intent Coffee Roasting and a Forward Edge child sponsor. He also partners on a corporate level, donating proceeds from his business quarterly for safe water projects—and supplying delicious coffee for our annual Portland banquet.



After Janine Bonura, a teacher, returned from visiting Chiquilistagua School while on a Forward Edge team to Nicaragua, she shared about the school's needs with her students. Two of them then spearheaded a fundraiser that brought in \$935, enough to buy 103 books in Spanish for Chiquilistagua's library. An additional \$300 was given to the school principal to help meet needs in the community.



In December, members of Elevate Church in Vancouver, WA held a Christmas fundraising event for children at *Trigo y Miel* in Oaxaca. At this event, people went from station-to-station, choosing a child's photo off a Christmas tree, writing that child a letter, taking a photo to send with the letter, and making a special donation to buy that child a set of winter clothes, underwear, and shoes!



A Portland team bound for Nicaragua found themselves stranded in Houston, TX when Hurricane Harvey hit. Stuck in a hotel for a full week, they discovered that God had ordained a completely different mission for them. Families fleeing the flood came to the hotel and were met by team members who were able to entertain the children, lend an ear, and offer encouragement in a time of distress.

# FINANCIALS AND ACCOUNTABILITY

## OUR PROMISES TO YOU



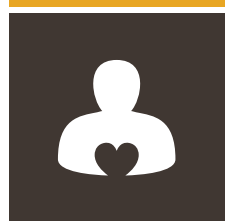
85 cents of every \$1 you give goes directly toward programs that help vulnerable children, disaster victims, and communities in need (15 cents to administration and fundraising).\*



All your gifts to help vulnerable children go toward effective programs dedicated to long-term, holistic transformation.



All your gifts to help disaster victims are used to help the most vulnerable return to their homes (widows, low-income families, single moms, etc.).

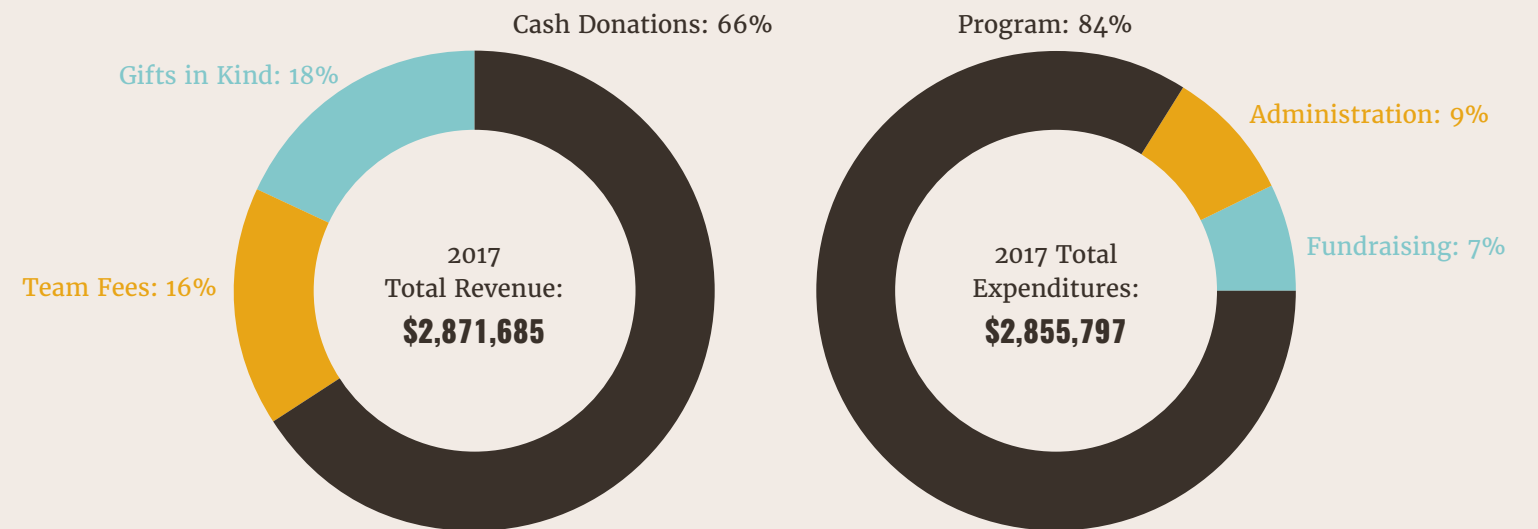


Your investment empowers credible, indigenous leaders caring for their own people.

\*Sometimes program funds aren't sufficient to cover program costs, and in those instances, we borrow from the General Operations Fund (the 15%). Some years we borrow, and some years we're able to pay it back, which results in expenditure ratios that aren't always precisely 85/15. Typically, our expenditures fluctuate between 83-89% of donations received — very high for the industry. In 2017, program funds more than covered program costs, and we were able to repay the General Fund 1%.

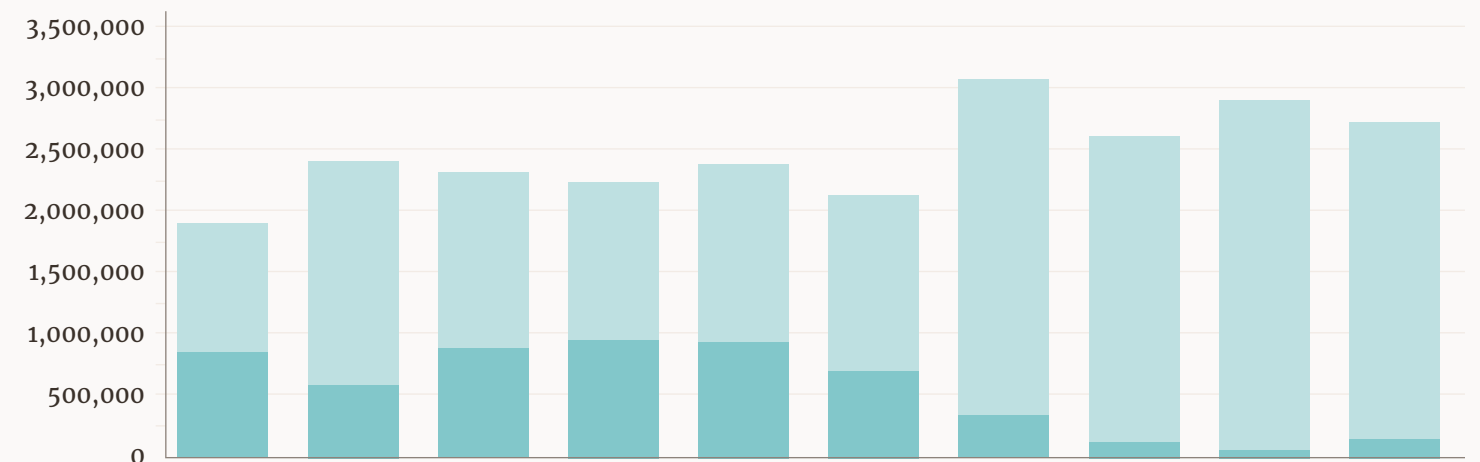


## THE FINANCIALS



**2017 TOTAL END OF YEAR NET ASSETS: \$1,106,451**

## 10 Year Revenue History



	2008	2009	2010	2011	2012	2013	2014	2015	2016	2017
<b>DISASTER</b>	880,800	544,500	974,500	905,200	879,300	652,100	323,100	134,900	68,000	141,200
<b>PROGRAM</b>	1,834,100	2,413,200	2,380,900	2,256,500	2,398,800	2,142,600	3,161,500	2,658,600	2,843,900	2,730,500
	Residual Hurricane Katrina relief		Haiti earthquake			Storm Sandy				

Donor Privacy Policy: Forward Edge International does not share or sell a donor's personal information, nor do we send donor mailings on behalf of other organizations. Forward Edge International is a 501(c)(3) tax-exempt charity.



**STATEMENT OF FINANCIAL POSITION**

December 31, 2017 (With Comparative Totals For December 31, 2016)

	2017	2016
<b>ASSETS</b>		
<b>Current Assets</b>		
Cash and Cash Equivalents	\$394,575	\$262,354
Investments	11,400	44,040
Pledge Receivables	-	30,000
Prepaid Expenses and Other Assets	24,269	18,808
Total current assets	430,244	355,202
<b>Long-term Assets</b>		
Fixed Assets, net of depreciation	676,207	693,535
Total assets	\$1,106,451	\$1,048,737
<b>LIABILITIES AND NET ASSETS</b>		
<b>Current Liabilities</b>		
Accrued Expenses	\$44,653	\$42,208
Deferred Team Fee Revenue	92,907	53,525
Total Current Liabilities	137,560	95,733
<b>Net Assets</b>		
Temporarily Restricted	277,074	255,989
Unrestricted	691,817	697,015
Total Net Assets	968,891	953,004
Total Liabilities and Net Assets	\$1,106,451	\$1,048,737

**STATEMENT OF ACTIVITIES AND CHANGES IN NET ASSETS**

For the Year Ended December 31, 2017

(With Comparative Totals For the Year Ended December 31, 2016)

	2017			2016 Total
	Unrestricted	Temporarily Restricted	Total	
<b>Revenues:</b>				
Contributions and grants	\$1,154,648	\$1,270,593	\$2,425,241	\$2,402,018
Trip fees	446,189	-	446,189	509,701
Other income	123	-	123	38
Investment income	132	-	132	210
Subtotal	1,601,092	1,270,593	2,871,685	2,911,967
Satisfaction of Program Restrictions	1,249,508	(1,249,508)	-	-
Total revenues	2,850,600	21,085	2,871,685	2,911,967
<b>Expenses:</b>				
Programs	2,163,750	-	2,163,750	2,091,643
Support services				
Management and general	482,508	-	482,508	527,963
Fundraising	209,540	-	209,540	211,874
Total support services	692,048	-	692,048	739,837
Total expenses	2,855,798	-	2,855,798	2,831,480
Change in net assets	(5,198)	21,085	15,887	80,487
Net assets, beginning of year	697,015	255,989	953,004	872,517
Net assets, end of year	\$691,817	\$277,074	\$968,891	\$953,004

# FORWARD EDGE TEAM

## Field Staff



### NICARAGUA

**Wilbert Alvarado and Gloria Sequeira**  
Directors, Forward Edge Nicaragua

Before Forward Edge, Wilbert served for several years as the director of a purity training ministry for adolescents called Creating Positive Relationships and as a leader with International Fellowship of Evangelical Students in Nicaragua. Gloria was a school principal for many years and spent her personal time serving families in Managua's city dump, where she met the girls who inspired her vision for Villa Esperanza.

**Ani Barmaksezian**  
(Missionary)

**Paul Barmaksezian**  
(Missionary)  
Assistant Director,  
Villa Esperanza

**Ricardo and Leyda Hernandez**  
Directors, Villa Esperanza Program

**Susie Miller** (Missionary)  
Nicaragua Field Coordinator



### CUBA

**Gabriel Lopez and Leidis Tejada**  
Cuba Program Coordinators

Gabriel and Leidis have been serving as local missionaries assisting the church in youth ministry and administration since they gave their lives to Christ in 2006.

**Pastor Alex Coronado and Mileyma Manso**  
Partners in Cuba



### MEXICO

**Victor and Lety Velasco**  
Directors, Trigo y Miel

In 2006, God called Victor and Lety Velasco out of 15 years of pastoral ministry to launch a program serving children in a poor community outside Oaxaca City called Olimpo. That program, *Trigo y Miel* (Wheat and Honey), has grown to serve several additional neighboring communities, and Victor and Lety have also planted a new church in Olimpo.

**Ale Perez**  
Field Coordinator

**Jose Irineo Lopez**  
Communications  
Coordinator and  
Program Assistant

**Raquel Velasco**  
Child Sponsorship  
Coordinator

**Tom and Wendy Hogan**  
(Missionaries)  
Forward Edge Field Staff  
Directors, Operation  
Enduring Homes



### HAITI

**Jean Chavannes Jeune**  
Director, Forward Edge Haiti

Over the past 38 years, Jean Chavannes Jeune has been serving as a pastor, evangelist, missionary, and economic development expert, widely known and respected in the nation of Haiti. He was also a two-time presidential candidate in Haiti.

**Fabnise Jean**  
Haiti Program Coordinator

**Pastor Prenor Coudo and Marie Chevelier**  
Partners in Haiti



### KENYA

**Jane Wathagana**  
Director, Mama Beth's  
Children's Program

Jane was born in Kijabe where her mother, Mama Beth, ran a program for decades caring for scores of impoverished children. Jane took over the program in 2006, and currently manages care for approximately 95 children.



### USA

**Bob and Diane Johnson**  
Field Coordinators,  
Domestic Disaster Recovery

Bob and Diane have been tirelessly serving disaster victims and team members through Forward Edge since Hurricane Katrina hit the Gulf Coast in 2005.

## Board Members

**Brad Fenison**  
(Chairman)  
President,  
Pediment Publishing

**Dan Vahalla**  
(Vice President)  
Federal Regional Manager,  
Riverbed Technology,  
Retired

**Karen Anfuso**  
(Secretary)

**John Greholver**  
(Treasurer)  
Program Director,  
Salvation Army

**Joseph Anfuso**  
Founder and President,  
Forward Edge International

**David Andersen**  
CEO, Andersen Construction

**Bruce Frydenlund**  
CFO, DCI International LLC

**Ravi Jayakaran**  
President, Medical  
Ambassadors International

**Don Moen**  
Manager, Information  
Security, Avanade Inc.

**Donna Moen**  
Manager, Fine Art Gallery

**Kay Moore**  
Director of Mission Teams,  
Forward Edge International,  
Retired

**Nick Shivers**  
President and CEO, WestOne  
Properties Group

Co-founder, Sell a Home,  
Save a Child

**Mary Vahalla**  
Church Missions Coordinator

## IHQ Staff

**Joseph Anfuso**  
Founder and President

**Jeff Thompson**  
Senior Program Officer

**Wendell Robinson**  
Senior Program Officer

**Nicole Klepec**  
Director of Administration

**Tim Ainley**  
Development Manager

**Tim Jones**  
Controller

**TyAnn Hunt**  
Child Sponsorship Administrator

**DaLynn Oglesby**  
Event Coordinator

**Desi McAnally**  
Communications Coordinator

**Ashley Hughes**  
Team Coordinator

**Kelsey Rairigh**  
Team Coordinator

**Tiffany Hearn**  
Team Coordinator

**Noah Hoff**  
Team Coordinator

**Jen Goheen**  
Bookkeeper

**Ashley Miles**  
SAHSAC Campaign Manager



**THANK YOU  
FOR CHANGING  
LIVES THROUGH  
FORWARD EDGE  
IN 2017.**



[www.forwardedge.org](http://www.forwardedge.org)

PO Box 1510  
Brush Prairie, WA 98606  
[fei@forwardedge.org](mailto:fei@forwardedge.org)  
360-574-3343