

# LM76



**PTFE SELF LUBE Composite**



**Ceramic Coated Bearings**



**Linear Shafting**



**Linear Ball Bearings**



**FDA Composite**



**Speed Demon**



**Linear Ball Bearing Pillow Blocks**



**Jet Rail**



**Linear Slides**

## LM76 Linear Motion Bearings

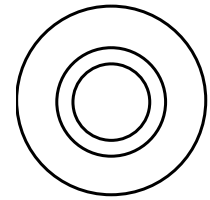
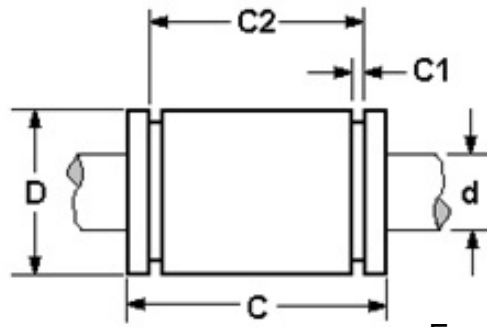
- Precision Linear Ball
- Precision Plus Linear Ball
- Precision Plus Pillow Blocks
- PTFE Self Lube Composite
- PTFE Self Lube Composite Pillow Blocks
- Ceramic Linear Bearings
- Roller Bearing Pillow Blocks
- MAX Rail Bearings
- Speed Demon Bearings



**DEFENDER RAIL**



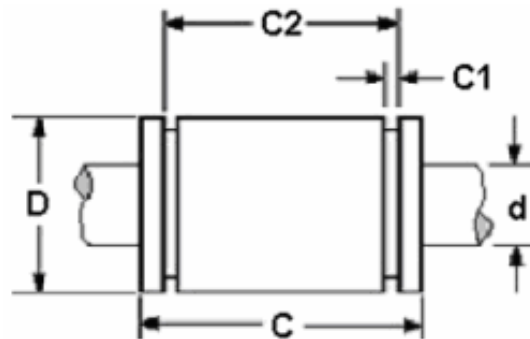
# LM76 Linear Ball Bearings



## CLOSED BEARINGS

For seals add the suffix "DD"

Part Number	d Shaft Diameter	D Outside Diameter	C Length	C1 Retaining Ring Groove Width	C2 Distance Between Retaining Grooves	No. of Ball Circuits	Bearing Mass (Lb)	Housing Bore Diameter Normal Fit	Dynamic Load Capacity (Lb (1))
A4812	.2485/.2490	.4996/.5000	0.75	0.039	.499/.515	3	0.02	.5000/.5005	19
A61014	.3735/.3740	.6246/.6250	0.875	0.039	.640/.624	4	0.06	.6250/.6255	36
A81420	.4985/.4990	.8746/.8750	1.25	0.046	.951/.967	4	0.08	.8750/.8755	85
A122026	.7485/.7490	1.2496/1.2500	1.625	0.056	1.154/1.170	5	0.21	1.2500/1.2505	200
A162536	.9985/.9990	1.5621/1.5625	2.25	0.068	1.741/1.759	5	0.38	1.5624/1.5630	350
A203242	1.2485/1.2490	1.9995/2.0000	2.625	0.068	1.991/2.009	6	1.1	2.0000/2.0010	520
A243848	1.4984/4.4989	2.3745/2.3750	3	0.086	2.397/2.415	6	1.43	2.3740/2.3760	770
A324864	1.9980/1.9987	2.9994/3.0000	4	0.103	3.177/3.195	6	2.75	3.0000/3.0010	1100



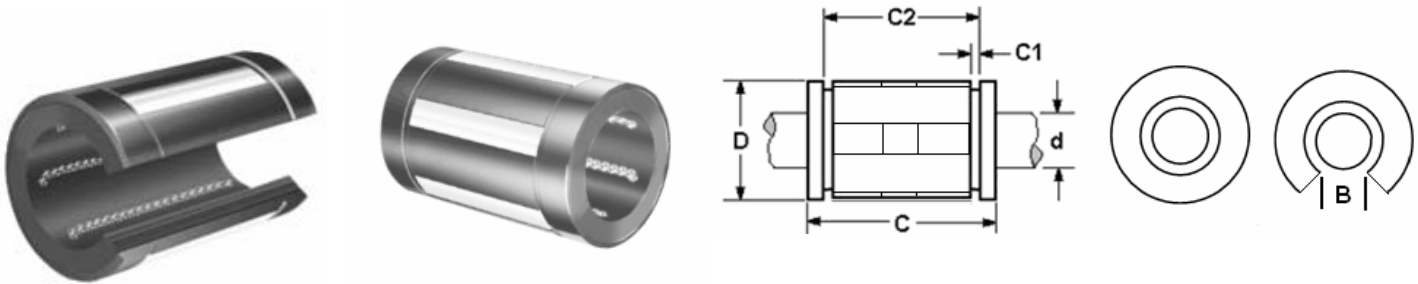
## OPEN BEARINGS

For seals add the suffix "DD"

Part Number	d Shaft Diameter	D Outside Diameter	C Length	C1 Retaining Ring Groove Width	C2 Distance Between Retaining Grooves	No. of Ball Circuits	Bearing Mass (Lb)	Housing Bore Diameter Normal Fit	Dynamic Load Capacity (Lb (1))
OPN81420	.4985/.4990	.8746/.8750	1.25	0.046	.951/.967	3	0.08	.8750/.8755	85
OPN122026	.7485/.7490	1.2496/1.2500	1.625	0.056	1.154/1.170	4	0.21	1.2500/1.2505	200
OPN162536	.9985/.9990	1.5621/1.5625	2.25	0.068	1.741/1.759	4	0.38	1.5624/1.5630	350
OPN203242	1.2485/1.2490	1.9995/2.0000	2.625	0.068	1.991/2.009	5	1.1	2.0000/2.0010	520
OPN243848	1.4984/4.4989	2.3745/2.3750	3	0.086	2.397/2.415	5	1.43	2.3740/2.3760	770
OPN324864	1.9980/1.9987	2.9994/3.0000	4	0.103	3.177/3.195	5	2.75	3.0000/3.0010	1100

# LM76 Linear Ball Bearings

SEALED & SELF ALIGNING



## CLOSED BEARINGS - SU \_\_B

Part Number	Nominal Shaft Diameter d	Number of Ball Circuits	Housing Bore Dia. D	C	C2	C1	Maximum Load Capacity (Lbf)
SU06B	0.375	4	.6250/.6255	0.875/0.860	.689/.699	0.039	105
SU08B	0.5	4	.8750/.8755	1.250/1.230	1.012/1.032	0.05	265
SU10B	0.625	5	1.1250/1.1255	1.500/1.480	1.095/1.105	0.056	420
SU12B	0.75	6	1.2500/1.2505	1.625/1.605	1.250/1.270	0.056	640
SU16B	1	6	1.5625/1.5630	2.250/2.230	1.864/1.884	0.068	1045
SU20B	1.25	6	2.0000/2.0008	2.625/2.600	1.984/2.004	0.068	1585
SU24B	1.5	6	2.3750/2.3760	3.000/2.970	2.390/2.410	0.086	1930

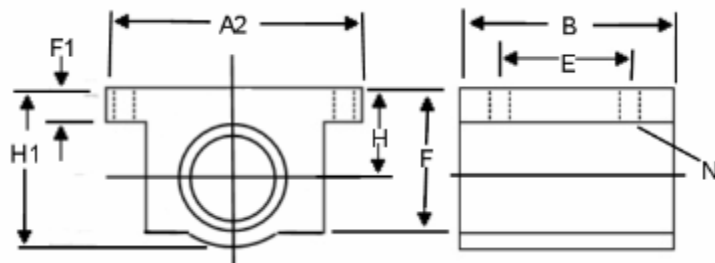
## OPEN BEARINGS - SU \_\_OPB

Part Number	Nominal Shaft Diameter d	Number of Ball Circuits	Housing Bore Dia. D	C	B	C2	C1	Maximum Load Capacity (Lbf)
SU8OPB	0.5	4	0.8755/0.8750	1.250/1.230	0.32	1.032/1.012	0.05	265
SU10OPB	0.625	5	1.1255/1.1250	1.500/1.480	0.38	1.105/1.095	0.056	420
SU12OPB	0.75	6	1.2505/1.2500	1.625/1.605	0.43	1.270/1.250	0.056	640
SU16OPB	1	6	1.5630/1.5625	2.250/2.230	0.56	1.884/1.864	0.068	1045
SU20OPB	1.25	6	2.0008/2.0000	2.625/2.600	0.63	2.004/1.984	0.068	1585
SU24OPB	1.5	6	2.3760/2.3750	3.000/2.970	0.75	2.410/2.390	0.086	1930

# LM76 Pillow Block

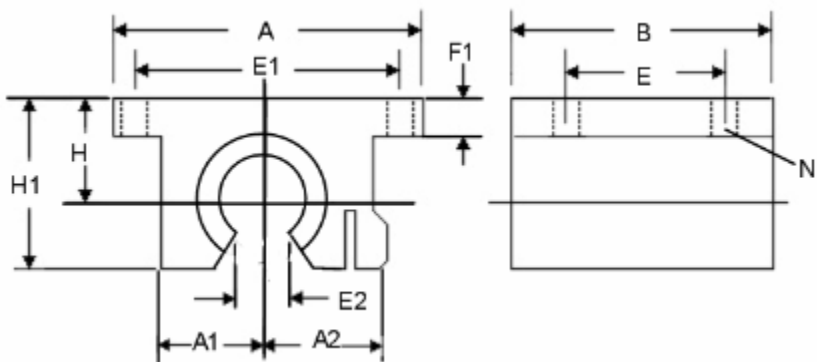
## Linear Ball Bearing Assemblies

### CLOSED PILLOW BLOCKS - SPB\_\_B



Part Number	Shaft Dia.	H +/- .003	H1	A	A2	B	E +/- .010	E1 +/- .010	F	F1	Hole	Bolt	Mass (lb)	Load Rating (lbf)
SPB8B	0.500	0.687	1.25	2.00	1.38	1.69	1.000	1.688	1.13	0.25	0.16	#6	0.2	255
SPB10B	0.625	0.875	1.63	2.50	1.75	1.94	1.125	2.125	1.44	0.28	0.19	#8	0.5	450
SPB12B	0.750	0.937	1.75	2.75	1.88	2.06	1.250	2.375	1.56	0.31	0.19	#8	0.6	600
SPB16B	1.000	1.187	2.19	3.25	2.38	2.81	1.750	2.875	1.94	0.38	0.22	#10	1.2	1050
SPB20B	1.250	1.500	2.81	4.00	3.00	3.63	2.000	3.500	2.50	0.44	0.22	#10	2.5	1500
SPB24B	1.500	1.750	3.25	4.75	3.50	4.00	2.500	4.125	2.88	0.5	0.28	1/4	3.8	2000

### OPEN PILLOW BLOCKS - SPB\_\_OPB



Part Number	Shaft Dia.	H +/- .003	H1	A	A1	A2	B	E +/- .010	E1 +/- .010	E2	F1	N		Mass (lb)	Load Rating (lbf)
												Hole	Bolt		
SPB8OPB	0.5	0.687	1.13	2.00	0.69	0.75	1.50	1.000	1.688	0.31	0.25	0.16	#6	0.2	230
SPB10OPB	0.625	0.875	1.44	2.50	0.88	0.94	1.75	1.125	2.125	0.37	0.28	0.19	#8	0.4	320
SPB12OPB	0.75	0.937	1.56	2.75	0.94	1.00	1.88	1.250	2.375	0.43	0.31	0.19	#8	0.5	470
SPB16OPB	1	1.187	2.00	3.25	1.19	1.25	2.63	1.750	2.875	0.56	0.38	0.22	#10	1.0	780
SPB20OPB	1.25	1.500	2.56	4.00	1.50	1.63	3.38	2.000	3.500	0.62	0.44	0.22	#10	2.1	1170
SPB24OPB	1.5	1.750	2.94	4.75	1.75	1.88	3.75	2.50	4.125	0.75	0.50	0.28	1/4	3.2	1560

## CROSS REFERENCE GUIDE

### STANDARD LINEAR BALL BEARINGS

A SERIES LM76	LM76 Sealed	Thomson	Thomson Sealed	INA	INA Sealed	NB St'l Retainer	NB St'l Retainer Sealed	NB Plst'c Retainer	NB Plst'c Retainer Sealed
A4812	A4812DD	A4812		KBZ04	KBZ04PP	SW4	SW4UU	SW4G	SW4GUU
A61014	A61014DD	A61014		KBZ06	KBZ06PP	SW6	SW6UU	SW6G	SW6GUU
A81420	A81420DD	A81420	A81420DD	KBZ08	KBZ08PP	SW8	SW8UU	SW8G	SW8GUU
A101824	A101824DD	A101824		KBZ10	KBZ10PP	SW10	SW10UU	SW10G	SW10GUU
A122026	A122026DD	A122026	A122026DD	KBZ12	KBZ12PP	SW12	SW12UU	SW12G	SW12GUU
A162536	A162536DD	A162536	A162536DD	KBZ16	KBZ16PP	SW16	SW16UU	SW16G	SW16GUU
A203242	A203242DD	A203242		KBZ20	KBZ20PP	SW20	SW20UU	SW20G	SW20GUU
A243848	A243848DD	A243848		KBZ24	KBZ24PP	SW24	SW24UU	SW24G	SW24GUU
A324864	A324864DD	A324864		KBZ32	KBZ32PP	SW32	SW32UU	SW32G	SW32GUU

#### Open Type Bearings

LM76	LM76 Sealed	Thomson	Thomson Sealed	INA	INA Sealed	NB St'l Retainer	NB St'l Retainer Sealed	NB Plst'c Retainer	NB Plst'c Retainer Sealed
OPN81420	OPN81420DD	OPN81420	OPN81420DD	KBZ08OP	KBZ08OPPP	SW8OP	SW8OPUU	SW8GOP	SW8GOPUU
OPN101824	OPN101824DD	OPN101824		KBZ10OP	KBZ10OPPP	SW10OP	SW10OPUU	SW10GOP	SW10GOPUU
OPN122026	OPN122026DD	OPN122026	OPN122026DD	KBZ12OP	KBZ12OPPP	SW12OP	SW12OPUU	SW12GOP	SW12GOPUU
OPN162536	OPN162536DD	OPN162536	OPN162536DD	KBZ16OP	KBZ16OPPP	SW16OP	SW16OPUU	SW16GOP	SW16GOPUU
OPN203242	OPN203242DD	OPN203242		KBZ20OP	KBZ20OPPP	SW20OP	SW20OPUU	SW20GOP	SW20GOPUU
OPN243848	OPN243848DD	OPN243848		KBZ24OP	KBZ24OPPP	SW24OP	SW24OPUU	SW24GOP	SW24GOPUU
OPN324864	OPN324864DD	OPN324864		KBZ32OP	KBZ32OPPP	SW32OP	SW32OPUU	SW32GOP	SW32GOPUU



**LM76 Linear Motion Bearings**  
**140 Industrial Drive**  
**E. Longmeadow, Ma 01028**  
**1-800-513-3163**  
**Fax: 413-525-3735**  
**www.LM76.com**

### HI LOAD – SELF ALIGNING LINEAR BALL BEARINGS

LM76	THOMSON	NB	INA
SU6B	SUPER6	TW6UU	KX6PP
SU8B	SUPER8	TW8UU	KX8PP
SU10B	SUPER10	TW10UU	KX10PP
SU12B	SUPER12	TW12UU	KX12PP
SU16B	SUPER16	TW16UU	KX16PP
SU20B	SUPER20	TW20UU	KX20PP
SU24B	SUPER24	TW24UU	KX24PP
SU08OPB	SUPER8OPN	TW8OPUU	KXO8PP
SU10OPB	SUPER10OPN	TW10OPUU	KXO10PP
SU12OPB	SUPER12OPN	TW12OPUU	KXO12PP
SU16OPB	SUPER16OPN	TW16OPUU	KXO16PP
SU20OPB	SUPER20OPN	TW20OPUU	KXO20PP
SU24OPB	SUPER24OPN	TW24OPUU	KXO24PP
SPB8B	SPB8UU	TWA8UU	KGX8PP
SPB10B	SPB10UU	TWA10UU	KGX10PP
SPB12B	SPB12UU	TWA12UU	KGX12PP
SPB16B	SPB16UU	TWA16UU	KGX16PP
SPB20B	SPB20UU	TWA20UU	KGX20PP
SPB24B	SPB24UU	TWA24UU	KGX24PP
SPB8OPB	SPB8OPN	TWD8UU	KGXO8PP
SPB10OPB	SPB10OPN	TWD10UU	KGXO10PP
SPB12OPB	SPB12OPN	TWD12UU	KGXO12PP
SPB16OPB	SPB16OPN	TWD16UU	KGXO16PP
SPB20OPB	SPB20OPN	TWD20UU	KGXO20PP
SPB24OPB	SPB24OPN	TWD24UU	KGXO24PP