

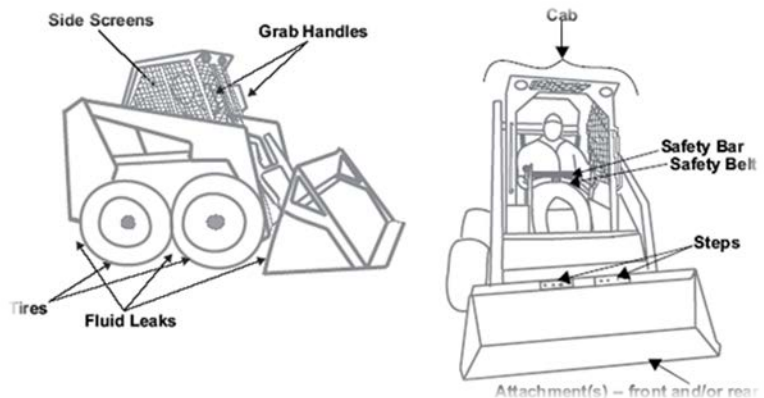
Title of Training	SKID STEER TRAINING W/ ATTACHMENTS	
Equipment Info.	MAKE/TYPE/SIZE/MODEL	
Material Needed	Operations Manual-Skid Steer for Hands On Training-Open Area to Perform Hands On-Orange Cones for Serpentine Course	Hands On Session- All participants will be required to perform a pre-operational inspection and operating control demonstration. A work assignment must be performed using the loader bucket in a variety of applications, while traveling and turning with the bucket loaded and empty.

POINTS TO EMPHASIZE

- *Rollover protective structures and safety screens should be in place at all times.*
- *Never exceed a skid steer's rated operating capacity.*
- *Always carry loads low.*
- *Keep the heavy end of a loader pointed uphill when traveling up and down slopes.*
- *Try to avoid driving over rough surfaces.*

Know your Machine

- Balance is the key to the stability and turning capability of a skid steer. With no load in the bucket, roughly two-thirds of the weight is on the rear axles. Weight shifts to the front wheels when the bucket is loaded.
- Overloading can make a skid steer excessively front heavy. This reduces stability and handling response. Don't exceed a loader's rated operating capacity.
- *Never attempt to operate the steering levers or any other hydraulic controls while standing outside of the cab!* Hydrostatic drive means that the skid steer will respond instantly when the levers are engaged.
- Operation of controls becomes almost instinctive for an experienced skid steer driver. Novices can become confused as a result of having to perform a number of functions at one time. If this happens, it is usually best to remove hands and feet from the controls. All machine functions will stop when pressure on the controls is released.
- *Never remove the rollover protective structure from a skid steer. Keep side screens in place-fatal crushing injuries have occurred when individuals were caught between the loader arms and the skid steer frame on "unscreened" machines.*
- The seat belt and seat bar should be employed whenever you are operating a skid steer.
- Always make sure that attachment locking devices are in place, even if you are switching attachments for only a few minutes. If not locked, an attachment could break free and roll back down the loader arms, or fall onto a bystander.



Safe Skid Steer Travel

- Skid steer stability decreases as the loader arms are raised. Always keep the bucket as low as possible when traveling or turning.
- Avoid steep slopes and rough terrain. Always travel up and down slopes, never across.

Trainee Name (print)		Signature of Trainee	
Instructor Name		Date of Training	
Scan To:	Safety/Training/Equipment/Skid Steer Safety w/Attachments-YYYY-MM-DD		
Revision # 002-15			Page 1 of 8

Title of Training	SKID STEER TRAINING W/ ATTACHMENTS	
Equipment Info.	MAKE/TYPE/SIZE/MODEL	
Material Needed	Operations Manual-Skid Steer for Hands On Training-Open Area to Perform Hands On-Orange Cones for Serpentine Course	Hands On Session- All participants will be required to perform a pre-operational inspection and operating control demonstration. A work assignment must be performed using the loader bucket in a variety of applications, while traveling and turning with the bucket loaded and empty.

- Move up and down slopes with the heavy end of the loader pointed uphill. Remember, no load=most weight on the rear of the skid steer; loaded bucket=more weight on the front.
- Try to go around obstacles, rather than over or through them.
- Stay as far away from creeks, gullies and ravines as the banks are deep. Otherwise, the earth could shear and send the skid steer crashing to the bottom.
- Road travel with a skid steer is not recommended.

Work Efficiently

- Drive slowly into the manure pack or material pile, then raise the front of the attachment. Back away with the load in the tilted-up bucket or fork.
- Drive to the unloading site with loader arms down. Stop, raise the arms, and drive forward slowly until the bucket is just over the spreader or pile.
- Use the hydraulics to keep the attachment level while raising the lift arms at a slow, even rate. Be prepared to lower the load quickly if the skid steer becomes unstable.

Work Safely

- Familiarize yourself with warning devices, gauges, and controls. Study operating procedures outlined in the manual.
- Check for obstacles or soft soil conditions in the work area.
- Check for overhead power lines.
- **Riders must never be permitted on skid steer loaders.**
- Never use a skid steer as a work platform or personnel carrier-hydraulic failure is always a possibility.
- Adjust speed to suit working conditions and terrain. Avoid sudden stops, starts, or turns.
- Never lift, swing, or otherwise move a load over anyone. In fact, you should insist that all bystanders leave the area before you start work.
- Take care when handling loose materials, such as rocks. Lifting the arms too high and rolling the bucket back too far could cause the objects to fall into the cab. That's way it is so important to keep the bucket level while the arms are being raised.
- Avoid dumping over fence posts or similar obstructions that could enter the cab if the loader were to tip forward.
- Take care when backfilling. The trench wall could collapse under the skid steer's weight.
- Never undercut a high embankment. The earth could give way and bury the loader.
- Never place any part of body or limb under raised loader arms. That's why it is so important to keep' the safety screens in place.
- If it is necessary to carry out repairs with the loader arms raised, be sure to lock the arms in place.



Trainee Name (print)		Signature of Trainee	
Instructor Name		Date of Training	
Scan To:	Safety/Training/Equipment/Skid Steer Safety w/Attachments-YYYY-MM-DD		
Revision # 002-15			Page 2 of 8

Title of Training	SKID STEER TRAINING W/ ATTACHMENTS	
Equipment Info.	MAKE/TYPE/SIZE/MODEL	
Material Needed	Operations Manual-Skid Steer for Hands On Training-Open Area to Perform Hands On-Orange Cones for Serpentine Course	Hands On Session- All participants will be required to perform a pre-operational inspection and operating control demonstration. A work assignment must be performed using the loader bucket in a variety of applications, while traveling and turning with the bucket loaded and empty.

AUGER ATTACHMENTS

Powered augers are used predominantly in the agriculture, landscaping, construction and utility industries. They are commonly used to drill holes for pilings, utility poles, light poles and fence posts. The auger may be mounted on a variety of equipment or vehicles that may be ridden on or walked behind.

Safety Measures

- Follow the instructions in the manufacturer's operating and preventive maintenance manual.
- Conduct daily pre-task meetings to ensure that all employees are aware of the correct procedures to prevent an unwanted incident and any hazards associated with the job task.
- Look for obstacles that may need to be removed. Hand digging may verify the presence or absence of underground material, including utilities.
- Prior to drilling, cut a hole in the landscape fabric sufficiently larger than the diameter of the auger to prevent contact or entanglement with the fabric.
- Except for the operator, employees should not be near the auger when it is operating.
- Employees using hand tools should not move or remove spoil-pile while the auger is operating.
- The operator should sit or stand at the operator's station while operating the auger.
- Do not modify the operator's station or disable safety controls beyond manufacturer's recommendations (for example: hold-to-run or seat switch controls).
- Remain a safe distance (a minimum of 10 feet) from the auger when helping the operator.

SWEEPER ATTACHMENT

GENERAL WARNINGS

- NEVER operate this or any other equipment under the influence of drugs or alcohol.
- NEVER carry passengers on an angle broom.
- NEVER leave the angle broom unattended in a raised position.

Trainee Name (print)		Signature of Trainee	
Instructor Name		Date of Training	
Scan To:	Safety/Training/Equipment/Skid Steer Safety w/Attachments-YYYY-MM-DD		
Revision # 002-15			Page 3 of 8

Title of Training	SKID STEER TRAINING W/ ATTACHMENTS	
Equipment Info.	MAKE/TYPE/SIZE/MODEL	
Material Needed	Operations Manual-Skid Steer for Hands On Training-Open Area to Perform Hands On-Orange Cones for Serpentine Course	Hands On Session- All participants will be required to perform a pre-operational inspection and operating control demonstration. A work assignment must be performed using the loader bucket in a variety of applications, while traveling and turning with the bucket loaded and empty.

- ALWAYS stop and inspect both the skid steer loader and broom for damage after striking a foreign object. Any damage should be repaired prior to restarting the skid steer loader engine and resuming sweeping.
- Sweep only in daylight or well-lit artificial light.
- Keep all nuts, bolts and screws tight and be sure the equipment is in safe operating condition and check the broom mounting bolts for proper tightness at frequent intervals.
- After attaching to your skid steer loader, visually inspect your lock-on pins to ensure that the angle broom is locked onto your skid steer loader. Remember, the angle broom is made of all steel components and rotating parts that could be dangerous if not properly attached.
- When working under the cowl of the angle broom, always securely block it up to reduce the risk of falling. (Use stands attached to broom.)
- Reduce speeds on slopes and make turns gradually to prevent tipping or loss of control. Exercise extreme caution while making turns on slopes.
- Stay alert for holes or drop-offs on all terrains.
- NEVER make sudden turns
- NEVER operate your angle broom raised more than two (2) feet.
- ALWAYS operate with safety in mind.
- Never Allow Personnel To Stand In Front Of An Operating Broom Or In The Path Of The Flying Debris.
- KEEP CHILDREN AWAY FROM THE SWEEPING AREA AT ALL TIMES.
- NEVER store on ground with weight on broom. This will cause warping of bristles. ALWAYS store on stands keeping broom bristles off ground.



DEBRIS DISCHARGE WARNINGS

- Angle Brooms discharge debris out the front of the machine. When sweeping with the angle broom, NEVER discharge material toward bystanders. All bystanders must be AT LEAST 75 feet away when operating the angle broom. NEVER allow bystanders near the machine while it is in operation.
- ALWAYS clear the sweeping area of objects (bottles, rocks, fencing, wire, etc.) that may be picked up and thrown.
- When sweeping with the angle broom ALWAYS use a shatterproof cab door or the 3/8" thick Poly Carbonate safety door optionally available from Star Industries. The door is used not only to protect the operator from flying debris, but also from overhanging or protruding objects (tree limbs, rebar, vines, etc.) from entering the cab and causing operator injury.

Trainee Name (print)		Signature of Trainee	
Instructor Name		Date of Training	
Scan To:	Safety/Training/Equipment/Skid Steer Safety w/Attachments-YYYY-MM-DD		
Revision # 002-15			Page 4 of 8

Title of Training	SKID STEER TRAINING W/ ATTACHMENTS	
Equipment Info.	MAKE/TYPER/SIZE/MODEL	
Material Needed	Operations Manual-Skid Steer for Hands On Training-Open Area to Perform Hands On-Orange Cones for Serpentine Course	Hands On Session- All participants will be required to perform a pre-operational inspection and operating control demonstration. A work assignment must be performed using the loader bucket in a variety of applications, while traveling and turning with the bucket loaded and empty.

ROTATING PARTS WARNINGS

- ALWAYS disengage power to the angle broom and shut the skid steer loader engine off prior to leaving the operator’s cab or performing any inspection or maintenance to either the angle broom or the skid steer loader.
- NEVER place hands or feet under the angle broom cowling or near the broom system while the unit is in operation.
- NEVER articulate (roll) the cowling downward to a degree that exposes t

BREAKER ATTACHMENT

- Operate the breaker in accordance with all laws and regulations which affect you, your equipment, and the work site.
- Do not operate the breaker until you have read this manual and thoroughly understand all safety, operation and maintenance instructions.
- The operator must be familiar with all prohibited work areas such as excessive slopes and dangerous terrain conditions.
- Do not operate the breaker until you have read the carrier equipment manual and thoroughly understand all safety, operation and maintenance instructions. The word “carrier”, as used in this manual, means a backhoe or excavator or similar equipment used to operate the breaker.
- Ensure that all maintenance procedures recommended in this manual are completed before using the equipment.
- The operator must not operate the breaker or carrier if any people are within the area where they may be injured by flying debris or movement of the equipment.
- Know the limits of your equipment.
- Establish a training program for all operators to ensure safe operation.
- Do not operate the tool unless thoroughly trained or under the supervision of an instructor.
- Become familiar with the carrier controls before operating the carrier and the breaker.
- When operating the breaker you must use ear protection, eye protection, and breathing protection.
- While learning to operate the breaker and carrier, do so at a slow pace. If necessary, set the carrier mode selector to the slow position.
- Make sure all controls (levers and pedals) are in the NEUTRAL position before starting the carrier.

Trainee Name (print)		Signature of Trainee	
Instructor Name		Date of Training	
Scan To:	Safety/Training/Equipment/Skid Steer Safety w/Attachments-YYYY-MM-DD		
Revision # 002-15	Page 5 of 8		

Title of Training	SKID STEER TRAINING W/ ATTACHMENTS	
Equipment Info.	MAKE/TYPER/SIZE/MODEL	
Material Needed	Operations Manual-Skid Steer for Hands On Training-Open Area to Perform Hands On-Orange Cones for Serpentine Course	Hands On Session- All participants will be required to perform a pre-operational inspection and operating control demonstration. A work assignment must be performed using the loader bucket in a variety of applications, while traveling and turning with the bucket loaded and empty.

- While operating the breaker and carrier, keep hands and feet on the controls at all times.
- Before leaving the carrier, always lower the boom and insure the carrier is stable. Never leave the machine with the engine running. ALWAYS ENGAGE THE PARKING BRAKE.
- Stop the engine before attempting to make any repairs, adjustments or servicing to either the carrier or the breaker.
- Do not operate the tool at oil temperatures above 190 °F/88 °C. Operation at higher temperatures

RAMMER ATTACHMENT

- **Perform daily inspections.**
 - Avoid blank hammering.
 - **DO NOT** hammer in the same tool position for over thirty (30) seconds.
 - **DO NOT** use the breaker to move material, pry material or any other use that it is not designed for.
 - **DO NOT** submerge the breaker under water unless the breaker has been modified for underwater operation.
 - Prevent contamination from entering the hydraulic hoses when mounting or dismounting the breaker from the machine.
 - Maintain a clean hydraulic system.
 - Replace the filter element with a new one and change hydraulic oil at the specified intervals.
 - Operate the breaker carefully. DO NOT hit the boom of the machine with the breaker.
- In addition to the design and configuration of this implement, including Safety Signs and Safety Equipment, hazard control and accident prevention are dependent upon the awareness, concern, prudence and proper training of personnel involved in the operation, transport, maintenance and storage of the machine.

Hands on Field Exercises

- Pre-trip
- Proper operations
- Shutdown

A. Participant Field Exercises

1. Participants will partake in the following hands-on activities

Trainee Name (print)		Signature of Trainee	
Instructor Name		Date of Training	
Scan To:	Safety/Training/Equipment/Skid Steer Safety w/Attachments-YYYY-MM-DD		
Revision # 002-15			Page 6 of 8

Title of Training	SKID STEER TRAINING W/ ATTACHMENTS	
Equipment Info.	MAKE/TYPE/SIZE/MODEL	
Material Needed	Operations Manual-Skid Steer for Hands On Training-Open Area to Perform Hands On-Orange Cones for Serpentine Course	Hands On Session- All participants will be required to perform a pre-operational inspection and operating control demonstration. A work assignment must be performed using the loader bucket in a variety of applications, while traveling and turning with the bucket loaded and empty.

- a. Perform a pre-trip inspection of the skid steer loader
- b. Demonstrate proper skid steer loader operations
- c. Attaching and removing a bucket
- d. Entering and exiting a loader without attachments
- e. Using the lift-arm bypass control knob
- f. Engaging and disengaging an approved lift-arm support
- g. Tipping-up the cab
- h. Connecting a remote start switch
- i. Completing a serpentine course
- j. Completing a 360 degree turn around course
- k. Completing a figure 8 course

Are there any questions?

Finally, let's take a moment to review some of the "Do's" and "Don'ts" skid steer loader safety.

<p>DO:</p> <ul style="list-style-type: none"> • Fasten the seatbelt and employ the safety bar before starting a skid steer. • Keep the attachment level while raising the loader arms. • Keep the arms lowered while traveling. • Point the loader's heavy end uphill when driving up and down a slope. 	<p>DON'T:</p> <ul style="list-style-type: none"> • Attempt to activate skid controls while standing outside of the cab. • Drive across a slope with a skid steer. • Use the skid steer bucket as a "work platform" • Give anyone a ride in the skid steer's cab.
--------------------------------------------------------------------------------------------------------------------------------------------------------------------------------------------------------------------------------------------------------------------------------------------------------------------------------------------------------------------------------------	-----------------------------------------------------------------------------------------------------------------------------------------------------------------------------------------------------------------------------------------------------------------------------------------------------------------------------------------------

Important Notice

This Safety Training Topic (STT) does not necessarily cover all possible hazards associated with this equipment and should be used in conjunction with equipment manual. It is designed as a guide to be used to compliment training in the field at Brieser Construction and as a reminder to users prior to equipment use.

Trainee Name (print)		Signature of Trainee	
Instructor Name		Date of Training	
Scan To:	Safety/Training/Equipment/Skid Steer Safety w/Attachments-YYYY-MM-DD		
Revision # 002-15	Page 7 of 8		

Title of Training	SKID STEER TRAINING W/ ATTACHMENTS	
Equipment Info.	MAKE/TYPE/SIZE/MODEL	
Material Needed	Operations Manual-Skid Steer for Hands On Training-Open Area to Perform Hands On-Orange Cones for Serpentine Course	Hands On Session- All participants will be required to perform a pre-operational inspection and operating control demonstration. A work assignment must be performed using the loader bucket in a variety of applications, while traveling and turning with the bucket loaded and empty.

EMPLOYEE NAME (Print or Type)	EMPLOYEE SIGNATURE	TRADE	JOB TITLE
1.			
2.			
3.			
4.			
5.			
6.			
7.			
8.			
9.			
10.			
11.			
12.			
13.			
14.			
15.			
16.			

Trainee Name (print)		Signature of Trainee	
Instructor Name		Date of Training	
Scan To:	Safety/Training/Equipment/Skid Steer Safety w/Attachments-YYYY-MM-DD		
Revision # 002-15			Page 8 of 8