

## Loans protected under the Protection of Cultural Objects on Loan Act 2013

Approved borrowing institution: Art Gallery of NSW

### Exhibition

Japan Supernatural

### Venue and dates

Art Gallery of New South Wales, Art Gallery Rd, Domain, Sydney, New South Wales, Australia, 2000, 02 Nov 2019 - 08 Mar 2020

### Lender

The British Museum

Utawaga Kuniyoshi (Japan, b.1797, d.1861)

Mitsukuni defies the skeleton spectre conjured up by Princess

Takiyasha 1845—1846

woodblock triptych print

triptych 36.9 x 74.2 cm



### Provenance

Donated to the British Museum by American Friends of the British Museum from the collection of Prof Arthur R Miller, New York, 2008.

Prof Miller began collecting art by Utawaga Kuniyoshi in the 1980s. In 2008 he gave a collection of 18000 Kuniyoshi prints to the British Museum.

### Lender

The Broad Art Foundation

Takashi Murakami (b.1962)

In the Land of the Dead, Stepping on the Tail of a Rainbow 2014

acrylic on canvas

300 x 2500 x 7.3 cm



### Provenance

Takashi Murakami 2014, exhibited Gagosian Gallery, New York 10 November 2014-25 January 2015; purchased by The Broad, Los Angeles, 9 February 2015 (accession number F-MURA-2015.005a-y)

### Lender

Private collection

**Loans protected under the Protection of Cultural Objects on Loan Act 2013**

Approved borrowing institution: Art Gallery of NSW

Fuyuko Matsui (Japan, b.1974)  
Nyctalopia 2005  
hanging scroll; colour on silk  
49 x 137.8 cm image; 72 x 231.6 cm overall



Provenance  
Fuyuko Matsui 2005

**Lender**

Private collection

Fuyuko Matsui (Japan, b.1974)  
The parasite will not abandon the body 2011  
hanging scroll; colour on silk  
30 x 80 cm image; 125 x 102.7 cm overall



Provenance  
Fuyuko Matsui 2011

**Lender**

Private collection

Fuyuko Matsui (Japan, b.1974)  
Joining the conversation 2011  
hanging scroll; colour on silk  
30 x 80 cm image; 125 x 102.7 cm overall



Provenance  
Fuyuko Matsui 2011

**Lender**

Private collection

Fuyuko Matsui (Japan, b.1974)  
Unification of the four limbs 2011  
hanging scroll; colour on silk  
30 x 80 cm image; 125 x 102.7 cm overall



Provenance  
Fuyuko Matsui 2011

**Lender**

Private collection

**Loans protected under the Protection of Cultural Objects on Loan Act 2013**

Approved borrowing institution: Art Gallery of NSW

Fuyuko Matsui (Japan, b.1974)

A lock of hair 2017

colour on silk; frame

31.8 x 31.8 cm overall



Provenance

Fuyuko Matsui 2017

**Lender**

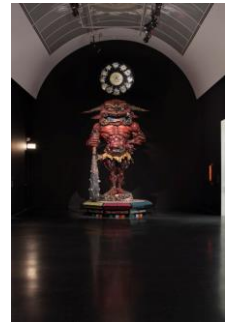
Kaikai Kiki Co Ltd

Takashi Murakami (b.1962)

Embodiment of 'A' 2014

fibre-reinforced plastic, stainless steel, zelkova wood and acrylic

430 x 262.4 x 253 cm



Provenance

Takashi Murakami 2014

**Lender**

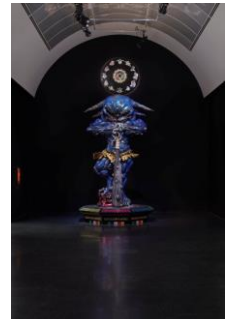
Kaikai Kiki Co Ltd

Takashi Murakami (b.1962)

Embodiment of 'Um' 2014

fibre-reinforced plastic, stainless steel, zelkova wood and acrylic

432.8 x 254.8 x 253 cm



Provenance

Takashi Murakami 2014

**Lender**

Kaikai Kiki Co Ltd

Chiho Aoshima (Japan)

Building spawning 2009

colour on rice paper

33 x 23.5 cm



Provenance

Chiho Aoshima 2009

**Lender**

Kaikai Kiki Co Ltd

**Loans protected under the Protection of Cultural Objects on Loan Act 2013**

Approved borrowing institution: Art Gallery of NSW

Chiho Aoshima (Japan)  
Blowing in the winter wind 2008  
colour on rice paper  
23.5 x 29.5 cm



Provenance  
Chiho Aoshima 2008

**Lender**

Kaikai Kiki Co Ltd

Chiho Aoshima (Japan)  
Wonder if I should erupt 2009  
watercolour, colour pencil on paper  
27 x 21.6 cm



Provenance  
Chiho Aoshima 2009

**Lender**

Kaikai Kiki Co Ltd

Chiho Aoshima (Japan)  
Moimoi of the graveyard 2009  
watercolour, colour pencil on paper  
30.2 x 40.2 cm



Provenance  
Chiho Aoshima 2009

**Lender**

Kaikai Kiki Co Ltd

Chiho Aoshima (Japan)  
Rabbit girl 2009  
watercolour, colour pencil on paper  
22 x 25.4 cm



Provenance  
Chiho Aoshima 2009

**Lender**

Kaikai Kiki Co Ltd

**Loans protected under the Protection of Cultural Objects on Loan Act 2013**

Approved borrowing institution: Art Gallery of NSW

Chiho Aoshima (Japan)  
It's a bit tight, but come on in! 2009  
watercolour, colour pencil on paper  
30.7 x 24.6 cm

Provenance  
Chiho Aoshima 2009

**Lender**

Kaikai Kiki Co Ltd



Chiho Aoshima (Japan)  
Tree with blue bucket 2009  
watercolour, colour pencil on paper  
44.8 x 36.7 cm

Provenance  
Chiho Aoshima 2009

**Lender**

Kaikai Kiki Co Ltd



Chiho Aoshima (Japan)  
Grass-eating cat 2009  
watercolour, colour pencil on paper  
30.4 x 28.8 cm

Provenance  
Chiho Aoshima 2009

**Lender**

Kaikai Kiki Co Ltd



Chiho Aoshima (Japan)  
Monsanto rock girl 2009  
colour on rice paper  
31 x 34 cm

Provenance  
Chiho Aoshima 2009

**Lender**

Kaikai Kiki Co Ltd



**Loans protected under the Protection of Cultural Objects on Loan Act 2013**

Approved borrowing institution: Art Gallery of NSW

Chiho Aoshima (Japan)  
Off to a memorial service 2009  
colour on rice paper  
35 x 27 cm

Provenance  
Chiho Aoshima 2009

**Lender**

Kaikai Kiki Co Ltd



Chiho Aoshima (Japan)  
Tree where Moimois gather 2009  
colour on rice paper  
37 x 22 cm

Provenance  
Chiho Aoshima 2009

**Lender**

Kaikai Kiki Co Ltd

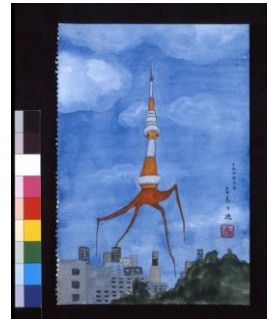


Chiho Aoshima (Japan)  
Azure evening skies and tower 2009  
watercolour, colour pencil on paper  
29.1 x 20 cm

Provenance  
Chiho Aoshima 2009

**Lender**

Kaikai Kiki Co Ltd



Chiho Aoshima (Japan)  
Gravestone, friendly with trees 2009  
colour on rice paper  
30.5 x 20.5 cm

Provenance  
Chiho Aoshima 2009

**Lender**

Kaikai Kiki Co Ltd





**Loans protected under the Protection of Cultural Objects on Loan Act 2013**

Approved borrowing institution: Art Gallery of NSW

Chiho Aoshima (Japan)  
To the sea, bearing Moimoi 2009  
colour on rice paper  
30.5 x 20.5 cm



Provenance  
Chiho Aoshima 2009

**Lender**

Kaikai Kiki Co Ltd

Chiho Aoshima (Japan)  
A fairy in the woods 2010  
watercolour, colour pencil on paper  
28.6 x 31 cm



Provenance  
Chiho Aoshima 2010

**Lender**

Kaikai Kiki Co Ltd

Chiho Aoshima (Japan)  
Morning glow of July 2010  
watercolour, colour pencil on paper  
26.3 x 29.3 cm



Provenance  
Chiho Aoshima 2010

**Lender**

Kaikai Kiki Co Ltd

Chiho Aoshima (Japan)  
Time with the neighbours 2010  
watercolour, colour pencil on paper  
22.8 x 20 cm



Provenance  
Chiho Aoshima 2010

**Lender**

Kaikai Kiki Co Ltd

**Loans protected under the Protection of Cultural Objects on Loan Act 2013**

Approved borrowing institution: Art Gallery of NSW

Chiho Aoshima (Japan)  
Rock 2010  
watercolour, colour pencil on paper  
17.5 x 16.7 cm



Provenance  
Chiho Aoshima 2010

**Lender**

The Minneapolis Institute of Arts

Hokusai Katsushika (Japan, b.1760, d.1849)  
The ghost of Oiwa from the series One hundred ghost stories (Hyaku monogatari) circa 1831—circa 1832  
woodblock print; ink and colour on paper  
26.3 x 18.9 cm



Provenance  
Gift of Louis W. Hill, Jr. to Minneapolis Institute of Art 1956

**Lender**

The Minneapolis Institute of Arts

Hokusai Katsushika (Japan, b.1760, d.1849)  
Laughing demoness from the series One hundred ghost stories (Hyaku monogatari) circa 1831—circa 1832  
woodblock print; ink and colour on paper  
26.2 x 18.5 cm



Provenance  
Gift of Louis W. Hill, Jr. to Minneapolis Institute of Art 1956

**Lender**

The Minneapolis Institute of Arts

Inagaki Ranpo (b.1859, d.1932)  
Ghost late 19th century  
hanging scroll; ink and colour on silk  
87.5 x 32.1 cm image; 175.3 x 40.6 x 2.5 cm overall



Provenance  
Gift of the Clark Center for Japanese Art & Culture to Minneapolis Institute of Art 2013; formerly given to the Center by Takako and Victor Hauge



**Loans protected under the Protection of Cultural Objects on Loan Act 2013**

Approved borrowing institution: Art Gallery of NSW

**Lender**

The Minneapolis Institute of Arts

Suzuki Kason (Japan, b.1860, d.1919)

Ghosts 1900

hanging scroll; ink and light colour on silk

120.6 x 33 cm image; 221 x 54.6 x 3.8 cm overall



Provenance

Gift of the Clark Centre for Japanese Art & Culture to Minneapolis Institute of Art 2013

**Lender**

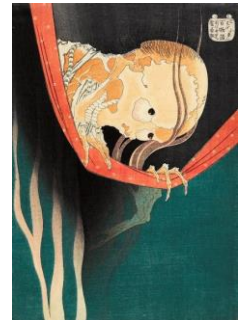
The Minneapolis Institute of Arts

Hokusai Katsushika (Japan, b.1760, d.1849)

The ghost of Kohada Koheiji from the series One hundred ghost stories (Hyaku monogatari) circa 1831—circa 1832

woodblock print; ink and colour on paper

26.3 x 18.5 cm



Provenance

Gift of Louis W. Hill, Jr. to Minneapolis Institute of Art 1956

**Lender**

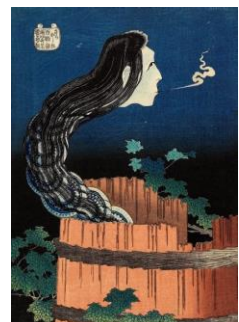
The Minneapolis Institute of Arts

Hokusai Katsushika (Japan, b.1760, d.1849)

The mansion of the plates from the series One hundred ghost stories (Hyaku monogatari) circa 1831—circa 1832

woodblock print; ink and colour on paper

26.4 x 19 cm



Provenance

Gift of Louis W. Hill, Jr. to Minneapolis Institute of Art 1956

**Lender**

The Minneapolis Institute of Arts

**Loans protected under the Protection of Cultural Objects on Loan Act 2013**

Approved borrowing institution: Art Gallery of NSW

Hokusai Katsushika (Japan, b.1760, d.1849)  
Memorial anniversary from the series One hundred ghost stories  
(Hyaku monogatari) circa 1831  
woodblock print; ink and colour on paper  
26.6 x 18.8 cm



Provenance  
Gift of Louis W. Hill, Jr. to Minneapolis Institute of Art 1956

**Lender**

The Minneapolis Institute of Arts

Shibata Gitō (b.1780, d.1819)  
Ghost early 19th century  
hanging scroll; ink and colour on paper  
96.5 x 33.7 cm image; 161.3 x 51.3 x 3.2 cm overall



Provenance  
Gift of the Clark Centre for Japanese Art & Culture to Minneapolis  
Institute of Art 2013

**Lender**

The Minneapolis Institute of Arts

Shibata Zeshin (Japan, b.1807, d.1891)  
Ibaraki 1882  
two panel folding screen, one of a pair; ink, colour and gold on paper  
170.2 x 172.7 x 1.9 cm



Provenance  
Minneapolis Institute of Art 2015. Mary Griggs Burke Collection, Gift of  
the Mary and Jackson Burke Foundation.

**Lender**

The Minneapolis Institute of Arts

Shibata Zeshin (Japan, b.1807, d.1891)  
Ibaraki 1882  
two panel folding screen, one of a pair; ink, colour and gold on paper  
170.2 x 172.7 x 1.9 cm



Provenance  
Minneapolis Institute of Art 2015. Mary Griggs Burke Collection, Gift of  
the Mary and Jackson Burke Foundation.

**Loans protected under the Protection of Cultural Objects on Loan Act 2013**

Approved borrowing institution: Art Gallery of NSW

**Lender**

The Minneapolis Institute of Arts

Suzuki Kason (Japan, b.1860, d.1919)

Ghosts 1900

hanging scroll; ink and light colour on silk

120.6 x 33 cm image; 221 x 54.6 x 3.8 cm



Provenance

Gift of the Clark Centre for Japanese Art & Culture to Minneapolis Institute of Art 2013

**Lender**

The Minneapolis Institute of Arts

Tsukioka Yoshitoshi (Japan, b.1839, d.1892)

Ghost late 19th century

hanging scroll; ink and colour on silk

111.8 x 31.1 cm image; 196.5 x 48.9 x 2.5 cm overall



Provenance

Gift of the Clark Center for Japanese Art and Culture to Minneapolis Institute of Art 2013

**Lender**

The Minneapolis Institute of Arts

Tsukioka Yoshitoshi (Japan, b.1839, d.1892)

Kusunoki Tamonmaru vanquishing the old badger (Kusunoki

Tamonmaru kori taiji no zu) 1860

woodblock print; ink and colour on paper

triptych 36.2 x 73.83 cm



Provenance

Minneapolis Institute of Art 2017; from the collection of Edmond Freis

**Lender**

The Minneapolis Institute of Arts

**Loans protected under the Protection of Cultural Objects on Loan Act 2013**

Approved borrowing institution: Art Gallery of NSW

Tsukioka Yoshitoshi (Japan, b.1839, d.1892)

Pictures from Ōtsu 1860

woodblock print; ink and colour on paper

diptych 35.72 x 49.6 cm



Provenance

Minneapolis Institute of Art 2017; from the collection of Edmond Freis

**Lender**

The Minneapolis Institute of Arts

Tsukioka Yoshitoshi (Japan, b.1839, d.1892)

Miyamoto Musashi and the exorcism of the evil fox of Princess

Osakabe 1863

woodblock print; ink and colour on paper

triptych 36 x 74 cm



Provenance

Minneapolis Institute of Art 2017; from the collection of Edmond Freis

**Lender**

The Minneapolis Institute of Arts

Tsukioka Yoshitoshi (Japan, b.1839, d.1892)

Kiyohime from the series One hundred ghost stories from Japan and

China (Wakan hyaku monogatari) 1865

woodblock print; ink and colour on paper

36.2 x 24.29 cm



Provenance

Minneapolis Institute of Art 2017; from the collection of Edmond Freis

**Lender**

The Minneapolis Institute of Arts

Tsukioka Yoshitoshi (Japan, b.1839, d.1892)

The greedy old woman from the series One hundred ghost stories

from Japan and China (Wakan hyaku monogatari) 1865

woodblock print; ink and colour on paper

34.45 x 23.18 cm



Provenance

Minneapolis Institute of Art 2017; from the collection of Edmond Freis

## Loans protected under the Protection of Cultural Objects on Loan Act 2013

Approved borrowing institution: Art Gallery of NSW

### Lender

The Minneapolis Institute of Arts

Tsukioka Yoshitoshi (Japan, b.1839, d.1892)

Picture of the demon disguised as an old woman begging to see her arm six days after Watanabe Tsuna had returned with it to Kyoto on the 9th day of the 4th lunar month 976 1885

woodblock print; ink and colour on paper  
diptych 36.8 x 48.7 cm



### Provenance

Minneapolis Institute of Art 2017; from the collection of Edmond Freis

### Lender

The Minneapolis Institute of Arts

Tsukioka Yoshitoshi (Japan, b.1839, d.1892)

Picture of Hakamadare Yasusuke and Kidomaru fighting with magic 1887

woodblock print; ink and colour on paper  
diptych .5 x 27 cm



### Provenance

Minneapolis Institute of Art 2017; from the collection of Edmond Freis.

### Lender

The Minneapolis Institute of Arts

Tsukioka Yoshitoshi (Japan, b.1839, d.1892)

Picture of the Earth spider monster mentally tormenting Sakata Kintoki and others during the night guard in the chambers of Minamoto Yorimitsu in the fall of 976 1886

woodblock print; ink and colour on paper  
diptych 37.3 x 50.8 cm



### Provenance

Minneapolis Institute of Art 2017; from the collection of Edmond Freis

### Lender

The Minneapolis Institute of Arts

**Loans protected under the Protection of Cultural Objects on Loan Act 2013**

Approved borrowing institution: Art Gallery of NSW

Tsukioka Yoshitoshi (Japan, b.1839, d.1892)  
Picture of Shanaō learning martial arts on Mount Kurama 1888  
woodblock print; ink and colour on paper  
diptych 36.4 x 50.1 cm



Provenance  
Minneapolis Institute of Art 2017; from the collection of Edmond Freis

**Lender**

The Minneapolis Institute of Arts

Tsukioka Yoshitoshi (Japan, b.1839, d.1892)  
The enlightenment of Jigoku-dayū [Hell courtesan] (Jigoku-dayū godō no zu) from the series New forms of thirty-six ghosts (Shingata sanjūrokkaisen) 1890  
woodblock print; ink and colour on paper  
37.2 x 25.1 cm



Provenance  
Minneapolis Institute of Art 2017; from the collection of Edmond Freis

**Lender**

The Minneapolis Institute of Arts

Utawaga Kunisada (Japan, b.1786, d.1865)  
Poem by Fujiwara no Toshiyuki Ason: the actor Ichikawa Kodanji IV as the ghost of Kasane from the series Comparisons for thirty-six selected poems (Mitate sanjūrokkasen no uchi) 1852  
woodblock print; ink and colour on paper  
35.6 x 24.7 cm



Provenance  
Bequest of Louis W. Hill, Jr. to Minneapolis Institute of Art 1996

**Lender**

The Minneapolis Institute of Arts



## Loans protected under the Protection of Cultural Objects on Loan Act 2013

Approved borrowing institution: Art Gallery of NSW

Yamamoto Tarō (Japan, b.1974)  
Emerging from the robe (Dashikosode) 2012  
hanging scroll; ink, colour and gold on silk  
105.9 x 35.6 cm image; 196.9 x 55.3 x 3.8 cm overall



Provenance  
Gift of the Clark Centre for Japanese Art & Culture to Minneapolis  
Institute of Art 2013

### Lender

The Minneapolis Institute of Arts

Kawanabe Kyōsai (Japan, b.1831, d.1889)  
Wisteria maiden and demon priest circa 1872  
hanging scroll; ink and colour on silk  
109.5 x 34 cm image; 196.5 x 45.7 cm overall



Provenance  
Gift of the Clark Centre for Japanese Art & Culture to Minneapolis  
Institute of Art 2013; formerly acquired by the Center in honor of Fred  
and Joan Baekeland.  
Previously in the collection of Josiah Conder (1852, London-1920, Tokyo).

### Lender

Museum of Fine Arts, Boston

Toriyama Sekien (Japan, b.1712, d.1788)  
Night procession of the hundred demons (Hyakki yakō zu) 12—1781  
handscroll; ink, colour and gold on silk  
27.9 x 431.1 cm image; 29.7 x 503.8 cm overall



Provenance  
Purchased by William Sturgis Bigelow (1850-1926) before 1911; gift of  
Bigelow to the Museum of Fine Arts, Boston (accessioned 3 August  
1911)

Much of Bigelow's collection of Asian art was formed during his residence in Japan between 1882 and 1889, although he also made acquisitions in Europe and the United States. Bigelow deposited many of these objects at the MFA in 1890 before donating them to the Museum's collection at later dates.

### Lender

Museum of Fine Arts, Boston

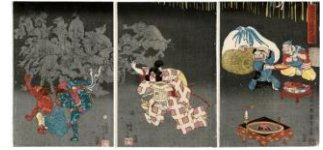
## Loans protected under the Protection of Cultural Objects on Loan Act 2013

Approved borrowing institution: Art Gallery of NSW

Tsukioka Yoshitoshi (Japan, b.1839, d.1892)

Momotarō scattering beans for setsubun (Momotarō mamemaki no zu)  
1859

woodblock print; ink and colour on paper  
triptych 36 x 76.1 cm



### Provenance

Purchased by William Sturgis Bigelow (1850-1926) before 1911; gift of Bigelow to the Museum of Fine Arts, Boston (accessioned 19 January 2005)

Much of Bigelow's collection of Asian art was formed during his residence in Japan between 1882 and 1889, although he also made acquisitions in Europe and the United States. Bigelow deposited many of these objects at the MFA in 1890 before donating them to the Museum's collection at later dates.

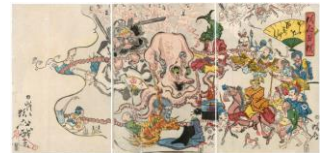
### Lender

Museum of Fine Arts, Boston

Kawanabe Kyōsai (Japan, b.1831, d.1889)

Comic one hundred turns of the rosary (Dōke hyakumanben) from the series One hundred wildnesses by Kyōsai (Kyōsai hyakkyō) 1864

woodblock print; ink and colour on paper  
triptych 37.3 x 74.2 cm



### Provenance

Purchased by William Sturgis Bigelow (1850-1926) before 1911; gift of Bigelow to the Museum of Fine Arts, Boston (accessioned 19 January 2005)

Much of Bigelow's collection of Asian art was formed during his residence in Japan between 1882 and 1889, although he also made acquisitions in Europe and the United States. Bigelow deposited many of these objects at the MFA in 1890 before donating them to the Museum's collection at later dates.

### Lender

Museum of Fine Arts, Boston

Kawanabe Kyōsai (Japan, b.1831, d.1889)

A nose-pulling contest with an elephant (Zō no hanabiki) (R) and the great tengu does calligraphy (Sho no dai tengu) (L) from the series One hundred pictures by Kyōsai (Kyōsai hyakuzu) 1863

woodblock print; ink and colour on paper  
18.7 x 12.7 cm



### Provenance

## Loans protected under the Protection of Cultural Objects on Loan Act 2013

Approved borrowing institution: Art Gallery of NSW

Purchased by William Sturgis Bigelow (1850-1926) before 1911; gift of Bigelow to the Museum of Fine Arts, Boston (accessioned 19 January 2005)

Much of Bigelow's collection of Asian art was formed during his residence in Japan between 1882 and 1889, although he also made acquisitions in Europe and the United States. Bigelow deposited many of these objects at the MFA in 1890 before donating them to the Museum's collection at later dates.

### Lender

Museum of Fine Arts, Boston

Asai Chû (Japan, b.1856, d.1907)

Wedding procession of foxes (Kitsune no yomeiri) from the portfolio Mokugo's picture collection (Mokugo zuan shû) 1908  
woodblock print; ink and colour on paper  
23 x 37.4 cm



### Provenance

Purchased by the Museum of Fine Arts, Boston 1956, sold by Mayuyama and Co, Tokyo (accessioned 13 December 1956)

### Lender

Museum of Fine Arts, Boston

Tsukioka Yoshitoshi (Japan, b.1839, d.1892)

Shumenosuke Urabe Hidetake from the series One hundred ghost stories from Japan and China (Wakan hyaku monogatari) 1865  
woodblock print; ink and colour on paper  
35.7 x 24.2 cm



### Provenance

Purchased by William Sturgis Bigelow (1850-1926) before 1911; gift of Bigelow to the Museum of Fine Arts, Boston (accessioned 19 January 2005)

Much of Bigelow's collection of Asian art was formed during his residence in Japan between 1882 and 1889, although he also made acquisitions in Europe and the United States. Bigelow deposited many of these objects at the MFA in 1890 before donating them to the Museum's collection at later dates.

### Lender

Museum of Fine Arts, Boston

## Loans protected under the Protection of Cultural Objects on Loan Act 2013

Approved borrowing institution: Art Gallery of NSW

Tsukioka Yoshitoshi (Japan, b.1839, d.1892)

Iga no Tsubone and the ghost of Fujiwara Nakanari from the series One hundred ghost stories from Japan and China (Wakan hyaku monogatari) 1865

woodblock print; ink and color on paper, embossing

36 x 24.5 cm



### Provenance

Purchased by William Sturgis Bigelow (1850-1926) before 1911; gift of Bigelow to the Museum of Fine Arts, Boston (accessioned 3 August 1911)

Much of Bigelow's collection of Asian art was formed during his residence in Japan between 1882 and 1889, although he also made acquisitions in Europe and the United States. Bigelow deposited many of these objects at the MFA in 1890 before donating them to the Museum's collection at later dates.

### Lender

Museum of Fine Arts, Boston

Tsukioka Yoshitoshi (Japan, b.1839, d.1892)

Ôya no Tarô Mitsukuni from the series One hundred ghost stories from Japan and China (Wakan hyaku monogatari) 1865

woodblock print; ink and colour on paper

35.7 x 24.2 cm



### Provenance

Purchased by William Sturgis Bigelow (1850-1926) before 1911; gift of Bigelow to the Museum of Fine Arts, Boston (accessioned 3 August 1911)

Much of Bigelow's collection of Asian art was formed during his residence in Japan between 1882 and 1889, although he also made acquisitions in Europe and the United States. Bigelow deposited many of these objects at the MFA in 1890 before donating them to the Museum's collection at later dates.

### Lender

Museum of Fine Arts, Boston

Tsukioka Yoshitoshi (Japan, b.1839, d.1892)

Kiyo-hime from the series One hundred ghost stories from Japan and China (Wakan hyaku monogatari) 1865

woodblock print; ink and color on paper

35.2 x 24 cm



### Provenance

## Loans protected under the Protection of Cultural Objects on Loan Act 2013

Approved borrowing institution: Art Gallery of NSW

Purchased by William Sturgis Bigelow (1850-1926) before 1911; gift of Bigelow to the Museum of Fine Arts, Boston (accessioned 3 August 1911)

Much of Bigelow's collection of Asian art was formed during his residence in Japan between 1882 and 1889, although he also made acquisitions in Europe and the United States. Bigelow deposited many of these objects at the MFA in 1890 before donating them to the Museum's collection at later dates.

### Lender

Museum of Fine Arts, Boston

Toriyama Sekien (Japan, b.1712, d.1788) 3810  
(Gazu) Hyakki yagyô (Illustrated Night procession of the hundred demons) 16  
woodblock printed book; ink on paper  
22.4 x 15.7 cm



### Provenance

Mrs. Jared K Morse, Connecticut, pre 2009; Gift of Mrs. Jared K Morse to the Museum of Fine Arts, Boston, 2009 (accessioned 21 July 2009)

### Lender

Gabriel Sulkowski

Miwa Yanagi (Japan, b.1967)  
Cinderella 2005  
gelatin silver print  
100 x 100 cm



### Provenance

Collection Gabriel Sulkowski; Miwa Yanagi 2005

### Lender

Gabriel Sulkowski

Miwa Yanagi (Japan, b.1967)  
Eréndira 2004  
gelatin silver print  
100 x 100 cm



### Provenance

Collection Gabriel Sulkowski; Miwa Yanagi 2004

### Lender

Gabriel Sulkowski

**Loans protected under the Protection of Cultural Objects on Loan Act 2013**

Approved borrowing institution: Art Gallery of NSW

Miwa Yanagi (Japan, b.1967)  
Eréndira II 2006  
gelatin silver print  
100 x 100 cm

Provenance  
Collection Gabriel Sulkowski; Miwa Yanagi 2006



**Lender**  
Gabriel Sulkowski

Miwa Yanagi (Japan, b.1967)  
Gretel 2004  
gelatin silver print  
100 x 100 cm

Provenance  
Collection Gabriel Sulkowski; Miwa Yanagi 2004



**Lender**  
Gabriel Sulkowski

Miwa Yanagi (Japan, b.1967)  
Hitosuya 2006  
gelatin silver print  
100 x 100 cm

Provenance  
Collection Gabriel Sulkowski; Miwa Yanagi 2006



**Lender**  
Gabriel Sulkowski

Miwa Yanagi (Japan, b.1967)  
Litte brother and little sister 2005  
gelatin silver print  
100 x 100 cm

Provenance  
Collection Gabriel Sulkowski; Miwa Yanagi 2005



**Lender**  
Gabriel Sulkowski



**Loans protected under the Protection of Cultural Objects on Loan Act 2013**

Approved borrowing institution: Art Gallery of NSW

Miwa Yanagi (Japan, b.1967)  
Little red riding hood 2004  
gelatin silver print  
100 x 100 cm



Provenance  
Collection Gabriel Sulkowski; Miwa Yanagi 2004

**Lender**

Gabriel Sulkowski

Miwa Yanagi (Japan, b.1967)  
Rapunzel 2004  
gelatin silver print  
100 x 100 cm



Provenance  
Collection Gabriel Sulkowski; Miwa Yanagi 2004

**Lender**

Gabriel Sulkowski

Miwa Yanagi (Japan, b.1967)  
Sleeping beauty 2004  
gelatin silver print  
100 x 100 cm



Provenance  
Collection Gabriel Sulkowski; Miwa Yanagi 2004

**Lender**

Gabriel Sulkowski

Miwa Yanagi (Japan, b.1967)  
Snow white 2004  
gelatin silver print  
100 x 100 cm



Provenance  
Collection Gabriel Sulkowski; Miwa Yanagi 2004

**Lender**

Gabriel Sulkowski

**Loans protected under the Protection of Cultural Objects on Loan Act 2013**

Approved borrowing institution: Art Gallery of NSW

Miwa Yanagi (Japan, b.1967)

The little match girl 2004

gelatin silver print

100 x 100 cm



Provenance

Collection Gabriel Sulkowski; Miwa Yanagi 2004

**Lender**

Gabriel Sulkowski

Miwa Yanagi (Japan, b.1967)

The white dove 2005

gelatin silver print

100 x 100 cm



Provenance

Collection Gabriel Sulkowski; Miwa Yanagi 2005

Date on which this information was first published to the Gallery's website 9 August 2019.

More information: [www.artgallery.nsw.gov.au/about-us/corporate-information/pcol/](http://www.artgallery.nsw.gov.au/about-us/corporate-information/pcol/)

Revised date 31 May 2018.