

Tamoggemon Software

LocaNote Lite

version 1.0

Operators manual

Table of contents

Table of contents	2
Preamble	2
On LocaNote Lite	2
Program compatibility	2
Installation	3
Launching TimeDrift	3
Opening notes	3
Creating folders	4
Editing notes	5
Freehand drawing	5
Draw lines	6
Draw rectangles	6
Draw circles	6
Change colour	7
Change line thickness	7
Options	8
Feedback/Support	8

Preamble

Congratulations on purchasing LocaNote Lite, the latest of the Tamoggemon offerings. This program is designed to serve you forever. Although Tamoggemon can not take any warranties for its function or can be held liable for any damages; no malfunctions have been reported in the beta phase.

Please read this manual carefully, as it contains important information for making your LocaNote experience as comfortable as possible.

On LocaNote Lite

LocaNote Lite is the #1 note taking product for S60: if you feel like taking handwritten notes and storing them in folders, it is your product of choice.

Further exciting features like photography, printing, sharing and mapping are available in LocaNote Plus! and LocaNote Pro – further information on these can be found at the LocaNote web site:

<http://www.tamoggemon.com/s60/loca/index.html>

Program compatibility

LocaNote is compatible with all S60v5 devices which have a 640x360 pixel touchscreen. As of this writing, tests were performed on the following handsets:

- Nokia N97
- Nokia XPressMusic 5800

However, we have no reasonable reason for doubt that the product will also work on all other S60v5 handsets, including the:

- Nokia XPressMusic 5530
- Samsung i8910
- Samsung Omnia HD

Installation

Purchase LocaNote Lite on the Ovi Store in order to install it onto your handset!

Launching TimeDrift

Click on the LocaNote icon to start the program. It will usually be found in the "Applications" folder of your handset, and looks like the blue icon in the image below:



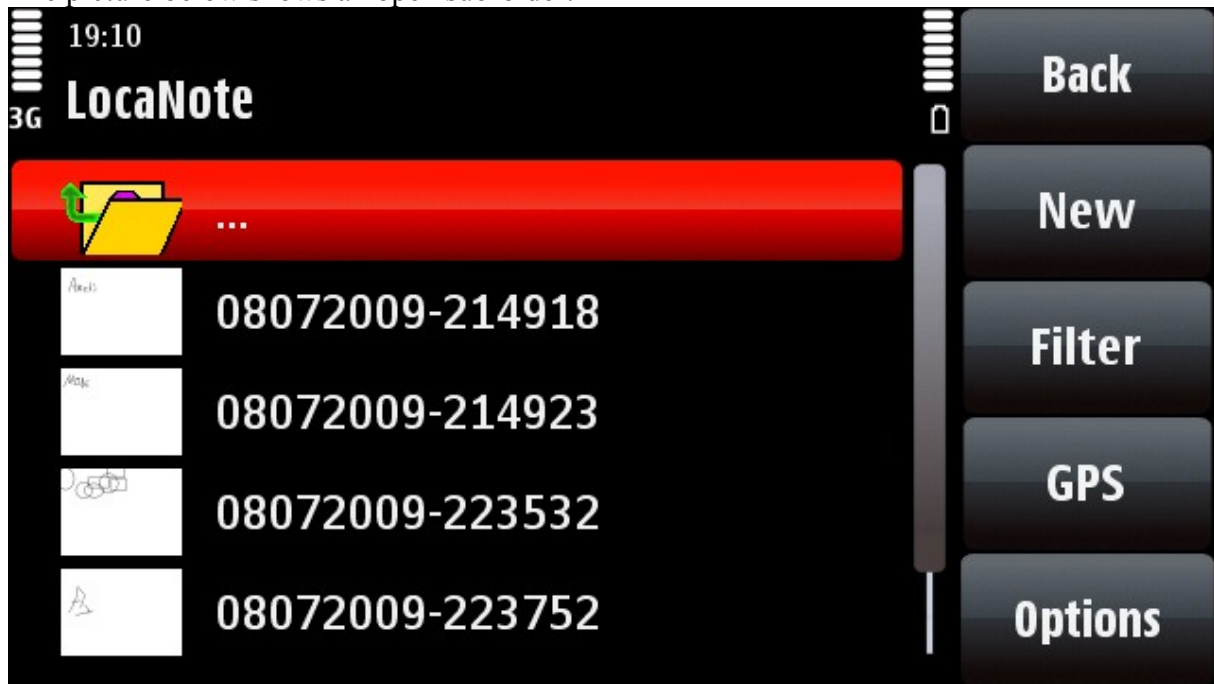
Opening notes

LocaNote allows you to store notes in folders. An example of a folder structure is shown in the image below:



The top two icons in the list are folders, while the three below are notes. Tap on a note to open it for viewing / editing; tap a folder to open it.

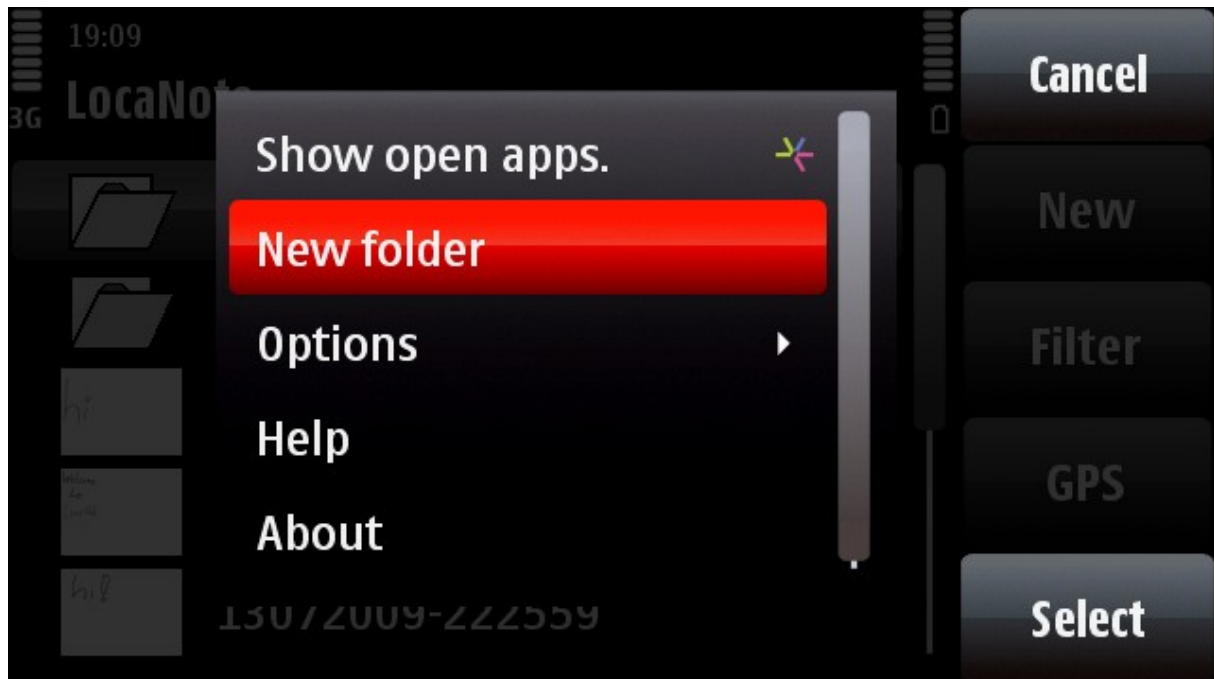
The picture below shows an open subfolder.



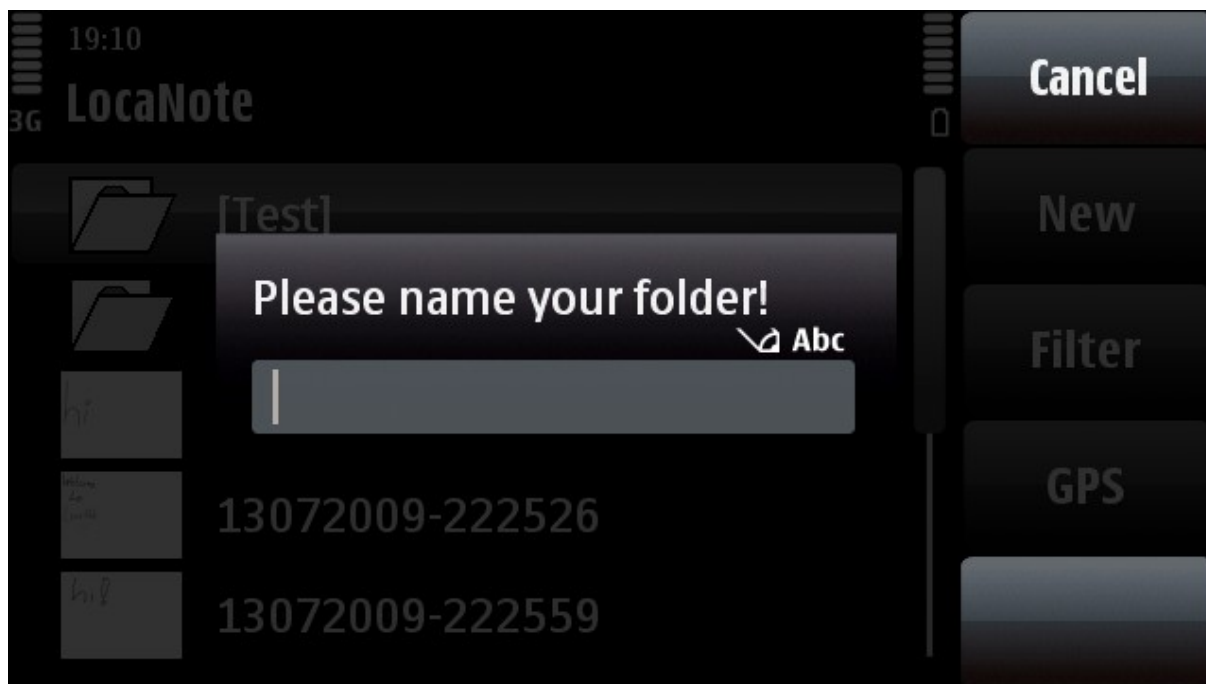
The three dots at the top allow you to go up into the folder's parent folder.

Creating folders

Folders can be created by opening the menu via Options, and clicking New Folder:



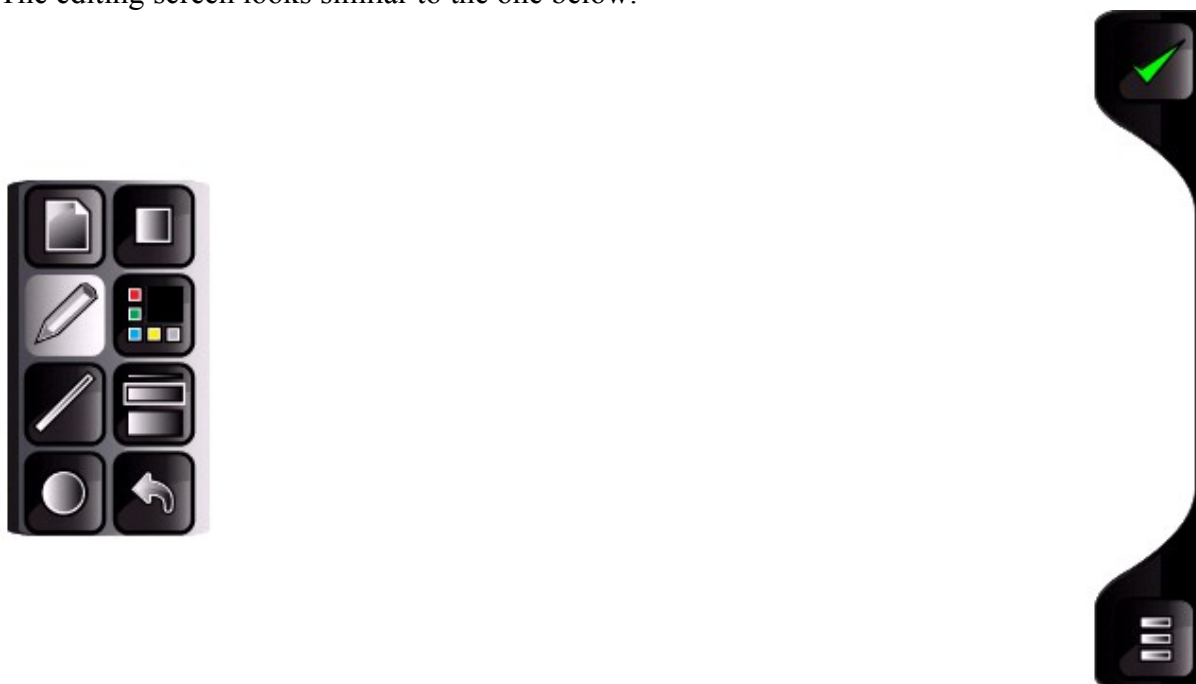
Then, enter the name of the folder into the box:



The folder will then be created in the currently active folder.

Editing notes

Tapping a note in a folder opens it for editing. Alternatively, tap New to create a new note. The editing screen looks similar to the one below:



The toolbar on the left side of the screen allows you to choose brushes and other editing tools, the green checkbox lets you save/close the note and returns you to the note list. The white area is the canvas where your notes are drawn.

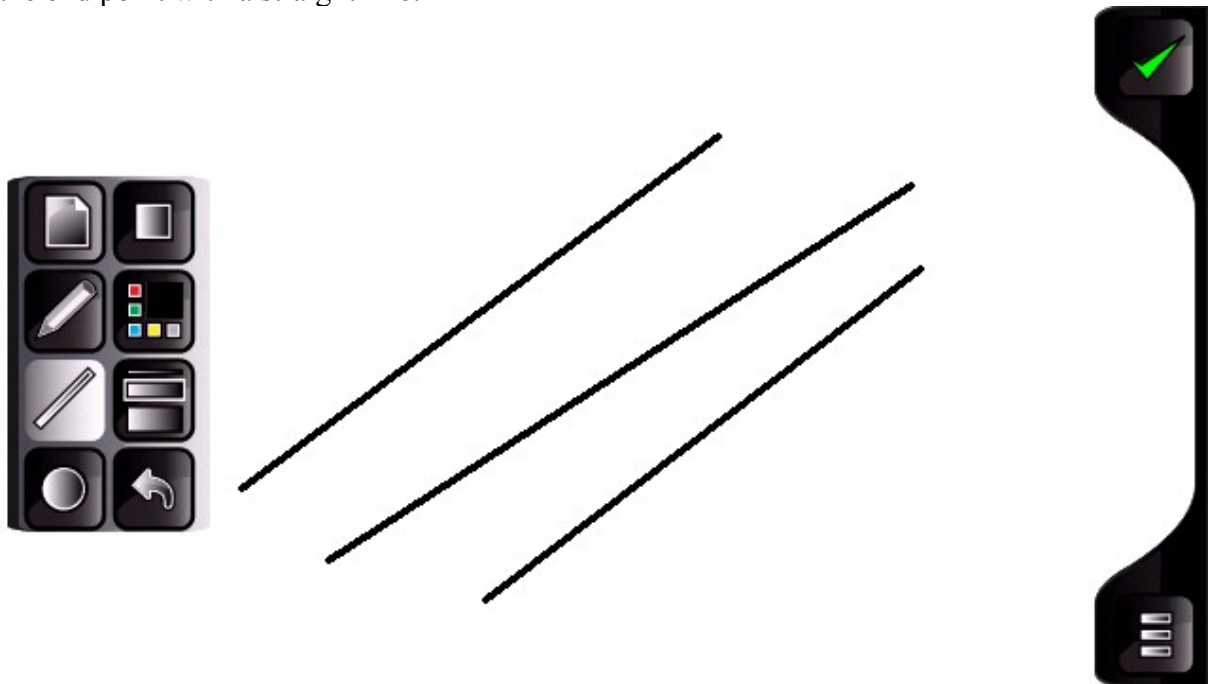
Various tools are available:

Freehand drawing

Freehand drawing lets you draw on your phone as if it were a piece of paper. Click the pencil icon to enable this mode.

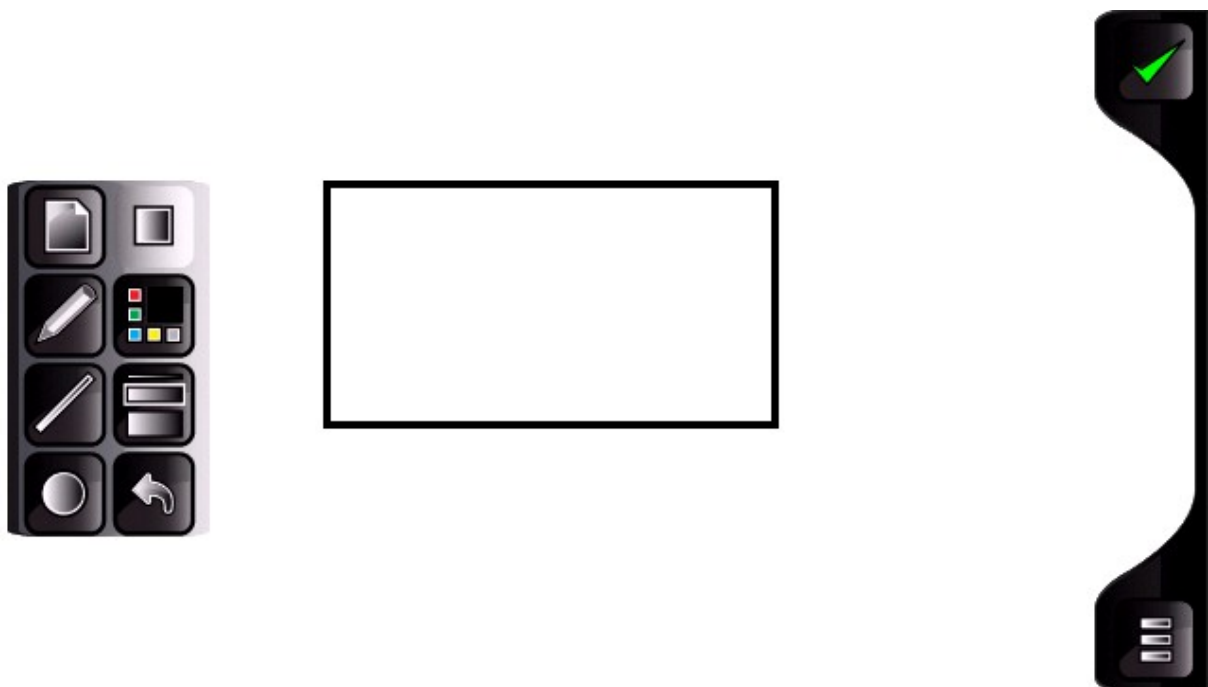
Draw lines

LocaNote can help you draw straight lines. To do this, select the line tool, click the beginning of the line and drag the stylus to the end point. LocaNote will then connect the beginning and the end point with a straight line:



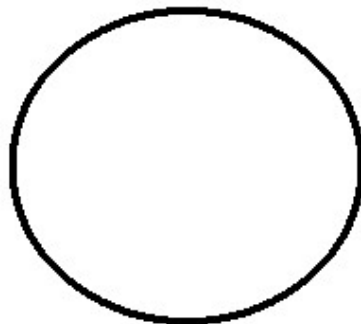
Draw rectangles

LocaNote assists you when drawing rectangles. Use the rectangle tool, and follow the instructions outlined for the Line tool.



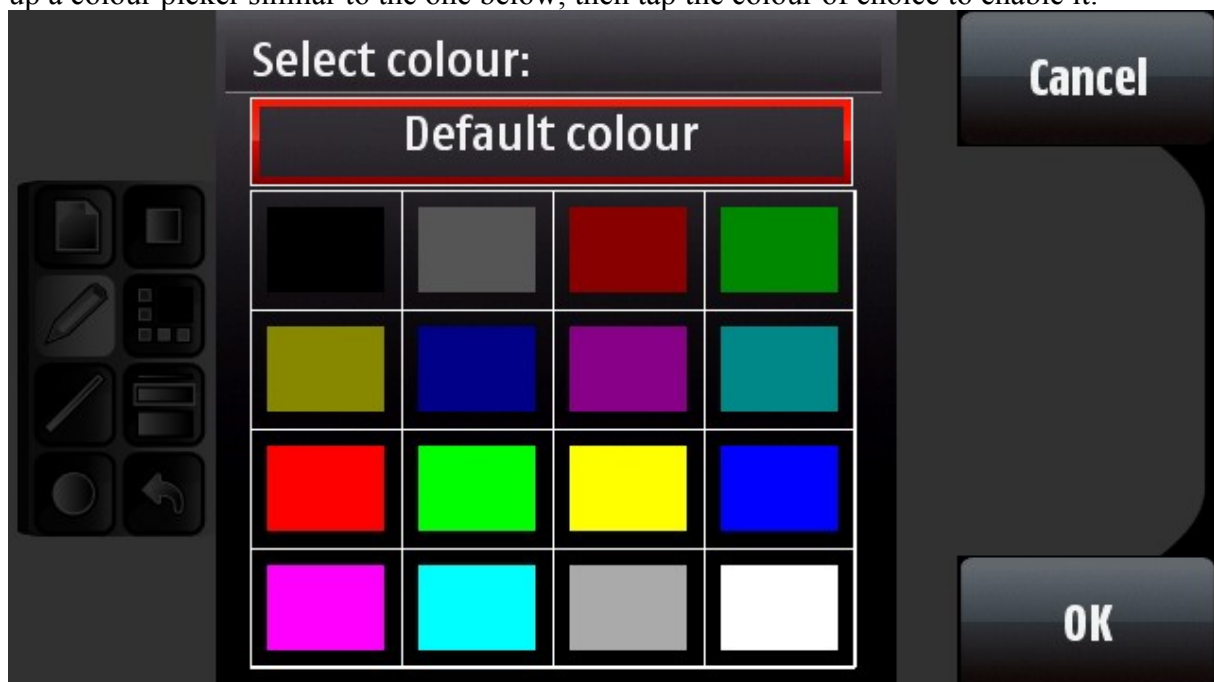
Draw circles

LocaNote assists you when drawing circles. Use the circle tool, and follow the instructions outlined for the Line tool.



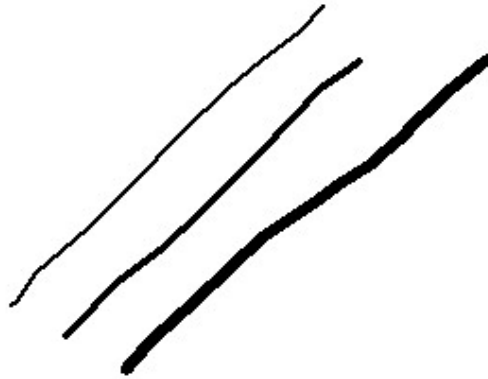
Change colour

LocaNote Lite lets you use up to 16 colours in your note. Hit the colour swatch icon to bring up a colour picker similar to the one below; then tap the colour of choice to enable it:



Change line thickness

All tools can use one of three line thicknesses. Tap the line thickness toggle to toggle between thin, medium and fat lines:



Options

You can disable LocaNote Lite's GPS tracking via the Options menu:



Keep in mind that this will stop the GPS updates, which means that LocaNote Plus or Pro will not be able to map your notes.

Feedback/Support

Do you have unanswered questions? Does LocaNote miss a feature you would want to use? Did you run into a bug?

First of all, take a look at the LocaNote section of our web site, which can be found at the URL below:

<http://www.tamoggemon.com/s60/loca/index.html>

If this doesn't help, contact Tamoggemon Tech Support with all issues at Tamog@gmx.at and describe your needs. If you want to request a port or want to report a bug, please give as many details about your system, etc - screenshots are gladly accepted.

NOTE: DO NOT contact the Ovi Store team for support. Getting in touch directly is faster and more efficient.