



Auburn Gear

PERFORMANCE DIFFERENTIALS

MAX LOCK LOCKER

Our new MAX Lock Locker™ is an automatic full locker that provides optimized traction for both 4 Wheel Drives and 2 Wheel drives—even the most unforgiving conditions. With enhanced power transfer to the wheels, rapid reaction to road condition changes, and the elimination of wheel-spin, MAX Lock means confidence!

aftermarket.auburngear.com

260.925.3200

Toyota 7.5" IFS

Vehicle Make	Year	AG Part Number	Side Gear Spline	Drive Type	Special Notes
Pickup	1976–1995	544917	27	RWD	
4Runner	1986–1995	544917	27	FWD	IFS With C.V. Axleshafts
4Runner	1995–2002	544917	27	FWD	Tacoma/Tundra C.V. Style
Hilux 2WD	1979–1995	544917	27	RWD	
Hilux 4WD	1986–1995	544917	27	FWD	
Pickup	1986–1995	544917	27	FWD	IFS With C.V. Axleshafts
T100	1993–1996	544917	27	FWD	IFS With C.V. Axleshafts
T100	1997–1998	544917	27	FWD	Tacoma/Tundra C.V. Style
Tacoma	1995–2004	544917	27	FWD	Tacoma/Tundra C.V. Style
Tundra	1995–2004	544917	27	FWD	Tacoma/Tundra C.V. Style
Sequoia	1995–2004	544917	27	FWD	Tacoma/Tundra C.V. Style

Toyota 8.4" (Non-TRD)

Vehicle Make	Year	AG Part Number	Side Gear Spline	Drive Type	Special Notes
T100	1993–1998	544924	30	RWD	
Tacoma 4x4	1995–2009	544924	30	RWD	Not for use on TRD Models
Tacoma S-Runner	2001–2004	544924	30	RWD	
Tacoma X-Runner	2005–2009	544924	30	RWD	
Tundra	2000–2006	544924	30	RWD	
Sequoia	2001–2007	544924	30	RWD	

Toyota 8" 10 Bolt (Fits Open OEM Carrier)

Vehicle Make	Year	AG Part Number	Side Gear Spline	Drive Type	Special Notes
4x4 4Runner	1984–1985	544902	30	FWD	
4Runner (w/ 22R-TE Turbo 4 cylinder)	1987	544902	30		
4x4 4Runner (w/ 22R or 22RE)	1984–1995	544902	30	RWD	
4Runner	1984–Present	544915	30	RWD	
FJ Cruiser	2007–Present	544915	30	RWD	
Land Cruiser (FJ80, FZJ80, HDJ80, HZJ80, HZJ81, HDJ81)	1991–1997	544902	30	FWD	
Landcruiser Bundera	1985–1996	544902	30	RWD	Compatible with Front or Rear
4x4 Hilux Pickup	1979–1985	544902	30	FWD	Beam Axle
4x4 Hilux Pickup (w/ 22R or 22RE)	1979–1995	544902	30	RWD	
Hilux Pickup (w/22R-TE Turbo 4 cylinder)	1986–1987	544902	30	RWD	
Pickup	1979–1995	544915	30	RWD	

Special Note: 544902 ONLY fits non-turbo, 4 cylinder models. It will not fit turbo or V-6 differential. 544915 is for a 4 pinion carrier (6 spider gears). Reuses stock side gears. This unit fits ONLY turbo 4 cylinder and V-6 models. It will not fit non-turbo 4 cylinder differentials.

Lincoln 9" 10 Bolt (Fits Open OEM Carrier)

Vehicle Make	Year	AG Part Number	Side Gear Spline	Drive Type	Special Notes
Mark Series	1968–1979	544909	28	RWD	
Town Car	1966–1979	544909	28	RWD	

Toyota 8 7/8" 10 Bolt (Fits Open OEM Carrier)

Vehicle Make	Year	AG Part Number	Side Gear Spline	Drive Type	Special Notes
FJ40, FJ45	1969–1983	544908	30	FWD RWD	
FJ55	1968–1979	544908	30	FWD RWD	
FJ60, H60	1981–1987	544908	30	FWD RWD	
FJ62	1988–1990	544908	30	FWD RWD	
BJ70, BJ 75 70 Series	1984–1998	544908	30	RWD	
Land Cruiser	1969–1989	544908	30	FWD	
Land Cruiser	1969–1997	544908	30	RWD	
Land Cruiser FJ80	1990–1992	544908	30	RWD	
Land Cruiser HDJ80	1990–1997	544908	30	RWD	
Land Cruiser HZJ80	1990–1997	544908	30	RWD	
Land Cruiser FZJ80	1993–1997	544908	30	RWD	
Land Cruiser HZJ81	1990–1997	544908	30	RWD	

Lexus

LX450	1996–1997	544908	30	RWD	
-------	-----------	--------	----	-----	--

Special Note: Replaces existing spider gears; will not work for Posi Case.

Chrysler-Dodge 9 1/4" 12 Bolt (Fits Open OEM Carrier)

Vehicle Make	Year	AG Part Number	Side Gear Spline	Drive Type	Special Notes
All Passenger Models	1973–1981	544910	31	RWD	
All Passenger Models	1967	544910	31	RWD	
All Passenger Models	1968	544910	31	RWD	Polara/Monaco
Charger	1974–1978	544910	31	RWD	
Cordoba	1975–1979	544910	31	RWD	
Dakota	1997–2011	544910	31	RWD	
Durango	1998–2011	544910	31	RWD	
Imperial	1974–1975	544910	31	RWD	
Magnum	1979	544910	31	RWD	V8-360
Pickup 1/2 Ton	1981–2000	544910	31	RWD	
Pickup 3/4 Ton	1981–2000	544910	31	RWD	SF Axle, V8, Automatic Trans.
Plymouth Trailduster	1974–1981	544910	31	RWD	
Ram D100, D150 W100, W150	1974–1993	544910	31	RWD	
Ram 1500	1994–2017	544910	31	RWD	
Ramcharger	1974–1993	544910	31	RWD	
Van 100	1974–1980	544910	31	RWD	All With 12 Bolt Cover
Van 150	1982, 1984	544910	31	RWD	All With 12 Bolt Cover
Van 200	1974–1980	544910	31	RWD	All With 12 Bolt Cover
Van 250	1982, 1984	544910	31	RWD	All With 12 Bolt Cover
Van 250	1992–1994	544910	31	RWD	All With 12 Bolt Cover
Van 350	1984–1994	544910	31	RWD	All With 12 Bolt Cover
Van 2500	1995–2000	544910	31	RWD	All With 12 Bolt Cover
Van 3500	1995–2000	544910	31	RWD	All With 12 Bolt Cover

Chrysler 9.62" 12 Bolt (Fits Open OEM Carrier)

Vehicle Make	Year	AG Part Number	Side Gear Spline	Drive Type	Special Notes
Power Wagon	1934–1945	544928	16	RWD	
Power Wagon	1950	544928	16	RWD	

Chrysler 8.25" 10 Bolt (Fits Open OEM Carrier)

Vehicle Make	Year	AG Part Number	Side Gear Spline	Drive Type	Special Notes
Chrysler					
Cordoba	1975-1983	544923	27	RWD	
Fifth Avenue	1982-1989	544923	27	RWD	
Imperial	1981-1983	544923	27	RWD	
Lebaron	1977-1981	544923	27	RWD	
GMC					
Cordoba	1975-1983	544923	27	RWD	
Fifth Avenue	1983-1989	544923	27	RWD	
Imperial	1981-1983	544923	27	RWD	
Lebaron	1977-1983	544923	27	RWD	
New Yorker	1969-1982	544923	27	RWD	
Newport	1969-1981	544923	27	RWD	
Town & Country	1972-1981	544923	27	RWD	
Dodge					
Dakota	1987-1996	544923	27	RWD	
Pickup-D/W					
100/150/1500	1972-1993	544923	27	RWD	
Ramcharger	1978-1993	544923	27	RWD	
Van-B100/1500	1971-1996	544923	27	RWD	
Van-B200/2500	1971-1996	544923	27	RWD	
Aspen	1976-1980	544923	27	RWD	
Challenger	1970-1974	544923	27	RWD	
Charger	1969-1978	544923	27	RWD	
Coronet	1969-1976	544923	27	RWD	
Dakota	1987-1996	544923	27	RWD	
Dart	1970-1976	544923	27	RWD	
Diplomat	1977-1989	544923	27	RWD	
Magnum	1978-1979	544923	27	RWD	
Mirada	1980-1983	544923	27	RWD	
Monaco	1969-1978	544923	27	RWD	
Polaro	1967-1973	544923	27	RWD	
St. Regis	1979-1981	544923	27	RWD	
Plymouth					
Barracuda	1970-1974	544923	27	RWD	
Belvedere	1969-1970	544923	27	RWD	
Caravelle	1978-1989	544923	27	RWD	
Cuda	1970-1974	544923	27	RWD	
Duster	1970-1976	544923	27	RWD	
Fury	1969-1978	544923	27	RWD	
Gran Fury	1972-1989	544923	27	RWD	
Roadrunner	1969-1980	544923	27	RWD	
Satellite	1969-1974	544923	27	RWD	
Valiant	1970-1976	544923	27	RWD	
Vip	1967-1969	544923	27	RWD	
Volare	1976-1980	544923	27	RWD	

Special Note: 544923 not compatible with Trac Lok Positraction Case.

Mercury 8" & 9" 10 Bolt (Fits Open OEM Carrier)

Vehicle Make	Year	AG Part Number	Side Gear Spline	Drive Type	Special Notes
Bobcat	1975-1980	544909	28	RWD	6 Cylinder
Comet (8" Ring Gear)	1964-1977	544909	28	RWD	302 Eng. or Smaller
Comet (9" Ring Gear)	1966-1969	544909	28	RWD	V8-251 With 390/427/428
Cougar (9" Ring Gear)	1969-1979	544909	28	RWD	V8-390/427/438
Cougar (8" Ring Gear)	1969-1979	544909	31	RWD	Aftermarket Axle
Cougar (8" Ring Gear)	1967-1978	544909	28	RWD	V8 289/302
Monarch (8" Ring Gear)	1975-1980	544909	28	RWD	
Monarch (9" Ring Gear)	1975-1980	544909	28	RWD	V8-351 With 400/460
Monarch (8 3/4" Ring Gear)	1975-1976	544909	28	RWD	V8-351 With 400/460
Montego (9" Ring Gear)	1970-1976	544909	28	RWD	V8-351 With 400/460
Montego (8" Ring Gear)	1970-1974	544909	28	RWD	V8-351M
Versailles	1977-1980	544909	28	RWD	

GM 7 5/8" (Fits Open OEM Carrier)

F-Body (Not 9 Bolt)

Vehicle Make	Year	AG Part Number	Side Gear Spline	Drive Type	Special Notes
Chevy Astro Van	1990-2003	544933	28	RWD	
Chevy Camaro	1990-2002	544933	28	RWD	Not IROC with 9 Bolt
Chevy S10, T10 Pickup	1988-2004	544933	28	RWD	
Chevy & GMC S10, S15, T10, T15 Blazer Jimmy	1988-2005	544933	28	RWD	
GMC S15, T15	1988-1990	544933	28	RWD	
GMC Syclone	1991	544933	28	RWD	
GMC Typhoon	1992-1993	544933	28	RWD	
GMC Sonoma Pickup	1991-2004	544933	28	RWD	
GMC Safari Van	1990-2003	544933	28	RWD	
Honda Passport	1993-1997	544933	28	RWD	For Dana 44 then no c-clip axle
Isuzu Hombre	1996-2000	544933	28	RWD	
Isuzu Rodeo	1991-1997	544933	28	RWD	For Dana 44 then no c-clip axle
Pontiac Firebird	1990-2002	544933	28	RWD	Not GTA with 9 Bolt
Pontiac Trans Am	1990-2002	544933	28	RWD	Not GTA with 9 Bolt

GM 7 1/2" (Fits Open OEM Carrier)

Vehicle Make	Year	AG Part Number	Side Gear Spline	Drive Type	Special Notes
Buick Century	1978-1981	544932	26	RWD	
Buick Regal	1978-1987	544932	26	RWD	
Chevelle Malibu	1982-1983	544932	26	RWD	
Chevy Astro Van	1985-1988	544932	26	RWD	
Chevy Camaro	1982-1989	544932	26	RWD	
Chevy Caprice	1978-1988	544932	26	RWD	
Chevy El Camino	1978-1988	544932	26	RWD	
Chevy Monte Carlo	1978-1988	544932	26	RWD	
Chevy & GMC S10 Blazer Jimmy	1982-1988	544932	26	RWD	
Chevy & GMC S10 Pickup	1982-1988	544932	26	RWD	
GMC Caballero	1978-1987	544932	26	RWD	
GMC Safari Van	1985-1988	544932	26	RWD	
Oldsmobile Cutlass Supreme	1978-1988	544932	26	RWD	
Pontiac Grand LeMans	1978-1983	544932	26	RWD	
Pontiac Grand Prix	1978-1987	544932	26	RWD	
Pontiac Firebird	1982-1989	544932	26	RWD	
Trans Am	1982-1989	544932	26	RWD	

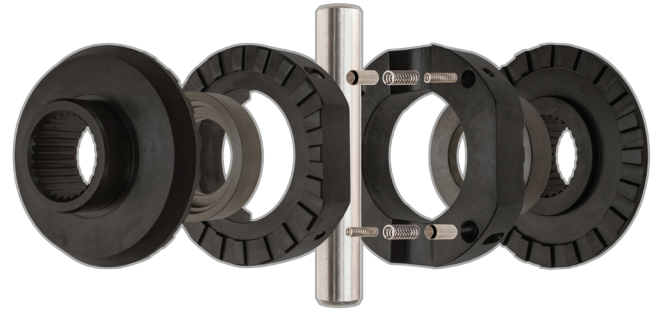
Special Note: 544932 will not work with a carrier that has one oval shaped window and one large window. The locker will fit only a carrier with two large windows.

GM 8.2" 10 Bolt (Fits Open OEM Carrier)

Vehicle Make	Year	AG Part Number	Side Gear Spline	Drive Type	Special Notes
Chevrolet					
Van-G10 Express 1500	1964-1971	544918	28	RWD	Does fit C-Clip Axle Shafts
Bel Air	1964-1972	544918	28	RWD	Does fit C-Clip Axle Shafts
Biscayne	1964-1972	544918	28	RWD	Does fit C-Clip Axle Shafts
Brockwood	1969-1970	544918	28	RWD	Does fit C-Clip Axle Shafts
Camaro	1967-1972	544918	28	RWD	Does fit C-Clip Axle Shafts
Caprice	1964-1972	544918	28	RWD	Does fit C-Clip Axle Shafts
Chevelle	1964-1972	544918	28	RWD	Does fit C-Clip Axle Shafts
Chevy II	1965-1969	544918	28	RWD	Does fit C-Clip Axle Shafts
El Camino	1964-1972	544918	28	RWD	Does fit C-Clip Axle Shafts
Impala	1964-1972	544918	28	RWD	Does fit C-Clip Axle Shafts
Malibu	1964-1972	544918	28	RWD	Does fit C-Clip Axle Shafts
Monte Carlo	1970-1972	544918	28	RWD	Does fit C-Clip Axle Shafts
Nova	1964-1972	544918	28	RWD	Does fit C-Clip Axle Shafts

GM 8 1/2" 10 Bolt (Fits Open OEM Carrier)

Vehicle Make	Year	AG Part Number	Side Gear Spline	Drive Type	Special Notes
Buick					
All Passenger Models	1996	544905	28	RWD	
Apollo	1973–1975	544905	28	RWD	
Century	1973–1977	544905	28	RWD	
GNX	1987	544905	28	RWD	
Regal	1973–1977	544905	28	RWD	
Regal Grand National GN	1973–1987	544905	28	RWD	
Regal T-Type	1982–1987	544905	28	RWD	
Riviera	1977–1978	544905	28	RWD	
Skylark	1973–1987	544905	28	RWD	
Special	1971–1972	544905	28	RWD	
Cadillac					
All Passenger Models	1991–1996	544905	28	RWD	
All Passenger Models	1987–1990	544905	28	RWD	Towing/Armored Options
All Passenger Models	1984	544905	28	RWD	Round Cover
Seville	1976–1979	544905	28	RWD	
Chevrolet					
All Passenger Models	1971–1996	544905	28	RWD	V8
Camaro & Z28	1970–1981	544905	28	RWD	
Caprice	1971–1990	544905	28	RWD	
Chevelle	1973–1977	544905	28	RWD	
Impala	1971–1985	544905	28	RWD	
Monte Carlo	1973–1977	544905	28	RWD	
Nova	1973–1977	544905	28	RWD	
Blazer Full Size	1979–1988	544905	28	FWD	Beam Axle
Blazer Full size	1982–1988	544905	28	RWD	
El Camino	1973–1975	544905	28	RWD	
1/2 Ton Pick-Up	1979–1987	544905	28	FWD	
1/2 Ton Pick-Up	1979–1987	544905	28	RWD	
1/2 Ton Pick-up (C1500, K1500)	1988	544905	28	RWD	
3/4 Ton Pick-Up	1978–1988	544905	28	FWD	VIN # (R) or (V) Only
Suburban 1/2 Ton	1979–1989	544905	28	FWD	
Suburban 1/2 Ton	1979–1988	544905	28	RWD	All With 10 Bolt Cover
Suburban 3/4 Ton	1979–1989	544905	28	FWD	Beam Axle
Suburban 3/4 Ton	1979–1988	544905	28	RWD	All with 10 Bolt Cover
1/2 Ton Vans	1979–1988	544905	28	RWD	
3/4 Ton Vans	1979–1988	544905	28	RWD	All With 10 Bolt Cover
GMC					
Jimmy Full Size	1979–1988	544905	28	FWD	Beam Axle
Jimmy Full Size	1979–1988	544905	28	RWD	
1/2 Ton Pick-Up	1978–1984	544905	28	FWD	
1/2 Ton Pick-Up	1978–1988	544905	28	RWD	
3/4 Ton Pick-Up	1978–1988	544905	28	FWD	VIN # (R) or (V) Only
Suburban 1/2 Ton	1977–1988	544905	28	FWD	
Suburban 1/2 Ton	1978–1988	544905	28	RWD	All With 10 Bolt Cover
Suburban 3/4 Ton	1978–1988	544905	28	FWD	Beam Axle
Suburban 3/4 Ton	1977–1988	544905	28	RWD	All With 10 Bolt Cover
1/2 Ton Vans	1979–1988	544905	28	RWD	
3/4 Ton Vans	1979–1988	544905	28	RWD	All With 10 Bolt Cover
Pontiac					
Firebird	1971–1981	544905	28	RWD	
Grand Prix	1973–1977	544905	28	RWD	
LeMans	1973–1977	544905	28	RWD	
Phoenix	1977–1979	544905	28	RWD	



MAX Lock Lockers™

Locking differentials, in effect, lock the two drive wheels together—somewhat like “spools” that solidly connect the axles together. When driving straight ahead, engine power is equally delivered to both drive wheels; however, unlike spools that do not differentiate when turning and are therefore not street compatible, lockers allow full wheel differentiation when cornering. When one wheel loses traction, locking differentials deliver engine power, not to the slipping wheel, but to the wheel with the highest amount of traction.

Used primarily in heavy industrial applications that can be more forgiving than passenger cars or trucks, lockers have been adopted out of necessity by extreme off-road and performance-racing enthusiasts despite their harsh drawbacks. The MAX Lock Locker™ is the best alternative for obtaining high traction results whether you on the street, strip, track, on or off the road.

GM 8 1/2" 10 Bolt (30 Spline Side Gear—Fits Open OEM Carrier)

Vehicle Make	Year	AG Part Number	Side Gear Spline	Drive Type	Special Notes
Cadillac					
Escalade	1999–2000	544906	30	RWD	
Chevrolet					
Caprice	1991–1996	544906	30	RWD	
Impala	1994–1996	544906	30	RWD	
Blazer	1988–1991	544906	30	FWD	
Blazer S-10	1995–2000	544906	30	RWD	
Blazer Full Size	1989–1991	544906	30	RWD	
Blazer Full Size	1989–1994	544906	30	RWD	
Blazer S-10 w/ ZR2	1998–2005	544906	30	RWD	
Pickup S-10	1995–2000	544906	30	RWD	
Pickup S-10 4x4 w/ ZR2	1994–2003	544906	30	RWD	
1/2 Ton Pickup	1995–2000	544906	30	RWD	
1/2 Ton Pickup Silverado Non HD	1988–1998	544906	30	RWD	

Continued on the next page.

GM 8 1/2" 10 Bolt (30 Spline Side Gear-Fits Open OEM Carrier) Continued

Vehicle Make	Year	AG Part Number	Side Gear Spline	Drive Type	Special Notes
3/4 Ton Pickup	1989-1991	544906	30	RWD	
3/4 Ton Pickup	1991	544906	30	FWD	
Suburban 1/2 Ton	1990-1991	544906	30	RWD	
Suburban 1/2 Ton	1988-1999	544906	30	RWD	
Suburban 3/4 Ton	1989-1991	544906	30	FWD	
Suburban 3/4 Ton	1989-1991	544906	30	RWD	
Tahoe	1992-2000	544906	30	FWD	
1/2 Ton Vans	1989-2000	544906	30	FWD	
3/4 Ton Vans	1989-1996	544906	30	RWD	
GMC					
Denali	1992-1999	544906	30	RWD	
Jimmy S-15	1995-2000	544906	30	RWD	
Jimmy Full Size	1988-1991	544906	30	FWD	
Jimmy Full Size	1989-1994	544906	30	RWD	
1/2 Ton Pickup	1988-2000	544906	30	RWD	
1/2 Ton Pickup Sierra Non HD	1988-1998	544906	30	RWD	
3/4 Ton Pickup	1989-1991	544906	30	FWD	
S15	1995-2000	544906	30	RWD	
Sonoma	1995-2000	544906	30	RWD	
Sonoma 4x4 Pickup w/ Highrider Package	1994-2003	544906	30	RWD	
Suburban 1/2 Ton	1989-1991	544906	30	FWD	
Suburban 1/2 Ton	1989-1999	544906	30	RWD	
Suburban 3/4 Ton	1989-1991	544906	30	FWD	
Suburban 3/4 Ton	1989-1991	544906	30	RWD	
1/2 Ton Vans	1989-1998	544906	30	RWD	
3/4 Ton Vans	1989-1996	544906	30	RWD	
Yukon	1992-1999	544906	30	RWD	

GM 8 7/8" 12 Bolt (30 Spline Side Gear-Fits Open OEM Carrier)

Vehicle Make	Year	AG Part Number	Side Gear Spline	Drive Type	Special Notes
Buick					
All Passenger Models	1971-1983	544907	30	RWD	
Century	1977	544907	30	RWD	
Riviera	1977-1978	544907	30	RWD	
Special	1970	544907	30	RWD	
Cadillac					
All Passenger Models	1977-1984	544907	30	RWD	Commercial Chasis
All Passenger Models	1877-1983	544907	30	RWD	Deville Cutout Cover
All Passenger Models	1977-1982	544907	30	RWD	Fleetwood Broughham
Chevrolet					
All Passenger Models	1965-1970	544907	30	RWD	V8-396 Engine or Larger
All Passenger Models	1977-1983	544907	30	RWD	V8-396 Engine or Larger
Blazer	1969-1981	544907	30	RWD	
Camaro	1967-1970	544907	30	RWD	V8
Caprice	1966-1970	544907	30	RWD	
Chevelle	1964-1972	544907	30	RWD	SS
Chevy II	1962-1972	544907	30	RWD	V8-396 Engine or Larger
Impala	1960-1970	544907	30	RWD	SS
Monte Carlo	1970-1972	544907	30	RWD	
Nova	1964-1971	544907	30	RWD	V8-396 Engine or Larger
Blazer Full Size	1961-1981	544907	30	RWD	
El Camino	1964-1972	544907	30	RWD	
1/2 Ton Pickup	1969-1981	544907	30	RWD	All With 12 Bolt Cover

GM 8 7/8" 12 Bolt (30 Spline Side Gear-Fits Open OEM Carrier) Continued

Vehicle Make	Year	AG Part Number	Side Gear Spline	Drive Type	Special Notes
Suburban 1/2 Ton	1965-1981	544907	30	RWD	All With 12 Bolt Cover
1/2 Ton Vans	1965-1981	544907	30	RWD	All With 12 Bolt Cover
3/4 Ton Vans	1965-1982	544907	30	RWD	All With 12 Bolt Cover
GMC					
Jimmy Full Size	1970-1981	544907	30	RWD	
1/2 Ton Pickup	1969-1981	544907	30	RWD	All With 12 Bolt Cover
Suburban 1/2 Ton	1965-1981	544907	30	RWD	All With 12 Bolt Cover
1/2 Ton Vans	1965-1981	544907	30	RWD	All With 12 Bolt Cover
3/4 Ton Vans	1965-1981	544907	30	RWD	All With 12 Bolt Cover
Pontiac					
Firebird	1967-1970	544907	30	RWD	V8
Grand Prix	1969-1970	544907	30	RWD	
LeMans	1977	544907	30	RWD	
Phoenix	1970-1972	544907	30	RWD	

Special Note: 544907 will accept C-Axles and will NOT work inside of the G80 Gov Lock Positraction.

GM 10 1/2" 14 Bolt (Fits Open OEM Carrier)

Vehicle Make	Year	AG Part Number	Side Gear Spline	Drive Type	Special Notes
Chevrolet					
Avalanche 2500	2002-2006	544926	30	RWD	
Pickup-C/K20	1973-1987	544926	30	RWD	
Pickup-R/V 2500	1988-1989	544926	30	RWD	
Pickup-C/K 2500	1988-2004	544926	30	RWD	
Pickup-Silverado 2500	1999-2004	544926	30	RWD	
Pickup-Silverado 2500HD	2001-2007, 2007-Present	544926	30	RWD	
Pickup-C/K 30	1973-1987	544926	30	RWD	
Pickup-R/V 3500	1988-1991	544926	30	RWD	
Pickup-C/K/RV 20 2500	1973-1987, 1988-2002	544926	30	RWD	
Van-G20 Express 2500	1996-2002	544926	30	RWD	
Van-G30 Express 3500	1973-1987, 1988-2002	544926	30	RWD	
GMC					
Pickup-R/V 2500	1988-1989	544926	30	RWD	
Pickup-C/K 2500	1988-2000	544926	30	RWD	
Pickup-Sierra 2500	1999-2004	544926	30	RWD	
Pickup-Sierra 2500HD	2001-Present	544926	30	RWD	
Pickup-C/K 3500	1973-1987	544926	30	RWD	
Pickup-R/V 3500	1988-1991	544926	30	RWD	
Suburban-C/K 2500	1973-1991	544926	30	RWD	
Yukon XL 2500	2000-Present	544926	30	RWD	
Van-G2500/Savana 2500	1996-1997, 1998-2002	544926	30	RWD	
Van-G2500/Savana 3500	1988-2002	544926	30	RWD	

Special Note: 544926 will not work for G80 Gov Lock positraction. The locker reuses stock side gears and cross shaft.

AMC Model 20 (Fits Open OEM Carrier)

Vehicle Make	Year	AG Part Number	Side Gear Spline	Drive Type	Special Notes
AMC					
Ambassador	1967-1974	544930	29	RWD	
AMX	1968-1970	544930	29	RWD	
Concord AMX	1978-1979	544930	29	RWD	
Gremlin 304 V8	1972-1976	544930	29	RWD	
Hornet V8	1970-1977	544930	29	RWD	
Javelin V8	1968-1974	544930	29	RWD	
Matador	1971-1978	544930	29	RWD	
Pacer 304 V8	1978	544930	29	RWD	
Jeep					
CJ7	1976-1986	544930	29	RWD	
CJ5	1976-1983	544930	29	RWD	
Scrambler CJ8	1982-1986	544930	29	RWD	
Wagoner & Grand Wagoneer FSJ	1979-1986	544930	29	RWD	

Ford 7 1/2" (Fits Open OEM Carrier)

Will NOT work in a Power Lok Positraction Case

Vehicle Make	Year	AG Part Number	Side Gear Spline	Drive Type	Special Notes
Aerostar	1983–2002	544931	28	RWD	
Bronco II	1984–1990	544931	28	RWD	
Fairmont	1979–1983	544931	28	RWD	
Granada	1979–1983	544931	28	RWD	
Mustang	1979–2009	544931	28	RWD	Does not fit V8
Pinto	1979–1983	544931	28	RWD	
Ranger	1983–2009	544931	28	RWD	Does not fit 4.0 V6
Thunderbird	1980–1997	544931	28	RWD	
Mazda B2300/B2500/ B3000 Pickups	1994–2009	544931	28	RWD	
Mercury Capri	1979–1986	544931	28	RWD	Does not fit V8

Ford 8.8" (Fits Open OEM Carrier)

Vehicle Make	Year	AG Part Number	Side Gear Spline	Drive Type	Special Notes
Ford					
Bronco	1987–1996	544921	31	RWD	7/8" Cross Pin
Expedition	1997–2005	544921	31	RWD	7/8" Cross Pin
Explorer	1991–2005	544921	31	RWD	7/8" Cross Pin
Pickup F-150	1987–2011	544921	31	RWD	7/8" Cross Pin
Van-E100/150	1987–2011	544921	31	RWD	7/8" Cross Pin
Ranger	1987–2011	544921	31	RWD	7/8" Cross Pin
Crown Victoria	2005–2010	544921	31		7/8" Cross Pin
Mustang	2005–Present	544921	31		7/8" Cross Pin
Mercury					
Mountaineer	1997–2006	544921	31	RWD	7/8" Cross Pin
Grand Marquis	2005–2010	544921	31		7/8" Cross Pin
Marauder	2003–2004	544921	31		7/8" Cross Pin
Lincoln					
Towncar	2005–2010	544921	31		7/8" Cross Pin

Special Note: Cover Bolts: 10 with 7/8" Cross Pins. Will NOT work inside a Power Lok Positraction Case.

Ford 9" 10 Bolt (Fits Open OEM Carrier)

Vehicle Make	Year	AG Part Number	Side Gear Spline	Drive Type	Special Notes
Bronco Full Size	1966–1976	544909	31	RWD	
Bronco Full Size	1976–1986	544909	28	RWD	
E-100 Econoline	1969–1983	544909		RWD	
E-100 Econoline Club Wagon	1975–1983	544909	31	RWD	
E-150 Econoline	1975–1986	544909	31	RWD	
E-150 Econoline Club Wagon	1975–1986	544909	31	RWD	
E-200 Econoline	1969–1974	544909	31	RWD	
Fairlane	1957–1970	544909	28	RWD	V8-351 with 390, 428, 289 Spcl.
Fairmont	1978–1979	544909	28	RWD	
Granada	1975–1980	544909	28	RWD	
LTD II	1977–1979	544909	28	RWD	
Mustang	1965–1973	544909	28	RWD	V8-351 with 390, 428, 289 Spcl.
Mustang	1965–1973	544909	31	RWD	Aftermarket Axle
Thunderbird	1957–1979	544909	28	RWD	
Thunderbird	1957–1979	544909	31	RWD	Aftermarket Axle
Pickup F-100 & F-150	1959–1977	544909	28	RWD	
Pickup F-100 & F-150	1975–1986	544909	31	RWD	
1/2 Ton Vans	1965–1987	544909	31	RWD	With Non-Removeable Carrier
3/4 Ton Vans	1968–1974	544909	31	RWD	

Special Note: Unit fits both 31 spline axles and 28 spline axles. When installing Max Lock unit, stock sidegears must be retained. Ford 8", 9"; 28 or 31 Spline; For Open Differential; Requires Use of Original Side Gears

Ford 10 1/4" 12 Bolt (Fits Open OEM Carrier)

Vehicle Make	Year	AG Part Number	Side Gear Spline	Drive Type	Special Notes
E-250	2003–2005, 2007–2014	544911	35	RWD	
E-250 Econoline	1985–2002	544911	35	RWD	
E-250 Econoline Club Wagon	1985–1991	544911	35	RWD	
E-350 Club Wagon	2003–2005	544911	35	RWD	
E-350 Econoline	1985–1998, 2000, 2007–2008	544911	35	RWD	
E-350 Econoline Club Wagon	1985–1998, 2000–2002	544911	35	RWD	
Excursion	2000–2005	544911	35	RWD	
F Super Duty	1988–1997	544911	35	RWD	
Pickup F-150	2001–2013	544911	35	RWD	
Pickup F-150 Heritage	2004	544911	35	RWD	
Pickup F-250	1985–2009	544911	35	RWD	2 Pinion
Pickup F-250 Super Duty	1999–2015	544911	35	RWD	2 Pinion
Pickup F-350	1984–1997, 1999–2009	544911	35	RWD	
Pickup F-350 Super Duty	1985–1998	544911	35	RWD	2 Pinion
Pickup F-350 Super Duty	1999–2015	544911	35	RWD	
Pickup F-450	2000–2004	544911	35	RWD	
Pickup F-450 Super Duty	2000–2004	544911	35	RWD	

Special Note: Will NOT work inside a Power Lok Positraction Case.

Nissan H233B, V6 Rear (Fits Open OEM Carrier)

Vehicle Make	Year	AG Part Number	Side Gear Spline	Drive Type	Special Notes
Nissan					
Frontier 6 Cylinder	1998–2004	544934	31	RWD	Without couplers
Mistral	2003–2006	544934	31	RWD	Without couplers
Navarra 6 Cylinder	1998–2004	544934	31	RWD	Without couplers
Pathfinder 6 Cylinder	1996–2004	544934	31	RWD	Without couplers
Patrol GQ Y60	1987–1998	544916	31	FWD	2 Pinion Carrier
Patrol GQ Y60	1987–1998	544934	31	RWD	Without couplers
Patrol GU Y61	1998–2009	544916	31	FWD	2 Pinion Carrier
Patrol GU Y61	1998–2009	544934	31	RWD	Without couplers
Patrol 160 MQ	1978–1988	544916	31	RWD	2 Pinion Carrier
Safari	1987–1998	544916	31	FWD	2 Pinion Carrier
Safari	1987–1998	544934	31	RWD	Without couplers
Terrano D21	1986–1995	544934	31	RWD	Without couplers
Terrano II	2003–2006	544934	31	RWD	Without couplers
Terrano R50	2003–2006	544934	31	RWD	Without couplers
Xterra 6 Cylinder	2000–2004	544934	33	RWD	Without couplers
Ford					
Maverick	1988–1994	544916	31	FWD	2 Pinion Carrier
Maverick	1988–1994	544934	31	RWD	Without couplers
Maverick	2003–2006	544934	31	RWD	Without couplers

Special Note: 544916 is for two pinion diff only. Includes Drivers & Couplers. 544934 is for four pinion diff only. Does NOT come with couplers. Uses stock side gear.

Suzuki 6.9" 10 Bolt (Fits Open OEM Carrier)

Vehicle Make	Year	AG Part Number	Side Gear Spline	Drive Type	Special Notes
Escudo	1993–1995	544912	26	RWD	
GMC Tracker	1993–1995	544912	26	RWD	
Grand Vitara	1999–2001	544929	26	RWD	Couplers not included
Pontiac Sunrunner	1994–1995	544912	26	RWD	
Samurai	1985–1995	544920	26	RWD	26 spline couplers included
Sidekick-Geo Tracker	1989–1995	544912	26	RWD	
Sidekick	1993–1995	544912	26	RWD	
Sidekick	1989–1995	544922	26	RWD	26 spline couplers included, rear application only
Vitara	1993–1995	544912	26	RWD	
X-90	1995–1996	544912	26	RWD	

Special Note: 544912 uses stock side gears and side gears (No need for splined side gear).

Suzuki SJ413 (Fits Open OEM Carrier)

Vehicle Make	Year	AG Part Number	Side Gear Spline	Drive Type	Special Notes
Holden Drover SJ413	1984–1995	544913	22, 26	FWD, RWD	
Holden Drover SJ413	1984–1998	544920	26	RWD	
Maruit Gypsy King	1996–1995	544913	22, 26	FWD, RWD	*See notes below.
Maruit Gypsy King	1996–1998	544920	26	RWD	
Caribbean SJ413	1984–1995	544913	22, 26	FWD, RWD	
Caribbean SJ413	1984–1998	544920	26	RWD	
Jimny SJ413	1984–1995	544913	22, 6	FWD, RWD	
Jimny SJ413	1984–1998	544920	26	RWD	Couplers Included
Samurai SJ413	1984–1995	544913	22, 26	FWD, RWD	
Samurai SJ413	1984–1995	544920	26	RWD	Couplers Included
Santana SJ413	1986–1995	544913	22, 26	FWD, RWD	
Santana SJ413	1986–1998	544920	26	RWD	
Sierra SJ413	1984–1995	544913	22, 26	FWD, RWD	
Sierra SJ413	1984–1998	544920	26	FWD	
JA11 & JA12 (Japan)	1990–1995	544913	26	RWD	
JA11 & JA12 (Japan)	1990–1998	544920	26	RWD	

Special Note: 544913 Uses Stock Side Gears, does not need splined side gear and couplers. If you would like to purchase with couplers please see part number 544920.

Available for front and rear. Axle Spline Count: 22 front and 26 rear.

Suzuki Sidekick/Geo Tracker (with couplers)

Vehicle Make	Year	AG Part Number	Side Gear Spline	Drive Type	Special Notes
Chevy Tracker	1993–1998	544922	26	RWD	
Geo Tracker	1993–1998	544922	26	RWD	
GMC Tracker	1993–1998	544922	26	RWD	
Pontiac Sunrunner	1994–1998	544922	26	RWD	
Suzuki Escudo	1993–1998	544922	26	RWD	
Suzuki Sidekick	1993–1998	544922	26	RWD	
Suzuki Vitara	1999–2002	544922	26	RWD	
Suzuki X-90	1996–1998	544922	26	RWD	

Dana 30 (Fits Open OEM Carrier)

Vehicle Make	Year	AG Part Number	Side Gear Spline	Drive Type	Special Notes
American Motors Eagle	1980–1988	544901	27		
Ford					
Areostar	1986–1989	544901	27	RWD	3.0/4.0 Cylinder Eng. Fill Plug in Cover
Bronco Full Size	1966–1971	544901	27	RWD	
Jeep					
Cherokee XJ	1984–2000	544901	27	FWD	
CJ-5	1978–1983	544901	27	FWD	
Commando	1967–1968	544901	27	RWD	
Commando	1972–1973	544901	27		
CJ-6	1972–1975	544901	27	FWD	
CJ-6A	1966–1968	544901	27	FWD	
CJ-7	1976–1986	544901	27	FWD	
CJ-8 Scrambler	1981–1985	544901	27	FWD	
Comanche	1986–1992	544901	27	FWD	Command-Track
Grand Cherokee	1993–1996	544901	27	FWD	
Grand Wagoneer	1984–1991	544901	27	FWD	
Grand Wagoneer	1993	544901	27	FWD	
Jeepster	1972–1973	544901	27	FWD	
Wrangler	1987–1995	544901	27	RWD	
Wrangler TJ & YJ	1997–2000	544901	27	FWD	
Wagoneer	1971–1973	544901	27	FWD	
Wagoneer	1984–1990	544901	27	FWD	
International					
Scout	1967–1971	544901	27	RWD	
Scout II	1971–1977	544901	27	RWD	

Special Note: For Open Differential; w/Locking Hubs Or Front Axle Disconnect; w/o Full Time 4WD.

Do Not Operate On Highway w/Front Hubs Locked And 4WD Engaged.

Will not work inside of Trac Lok positraction case.

Dana 35 (Fits Open OEM Carrier)

Vehicle Make	Year	AG Part Number	Side Gear Spline	Drive Type	Special Notes
AMC					
AMX	1968–1970	544903	27	RWD	
Javelin	1968–1974	544903	27	RWD	
Hornet	1970–1977	544903	27	RWD	
Pacer	1975–1980	544903	27	RWD	
Concord	1978–1983	544903	27	RWD	
Spirit	1979–1983	544903	27	RWD	
Eagle	1980–1988	544903	27	RWD	
Ford					
Explorer	1991-1994	544903	27	FWD	IFS, '93 & Newer
Explorer	1995–2001	544904	27	FWD	IFS
Ranger	1987–1997	544903	27	FWD	IFS & ABS
Ranger (w/ 4.0L V6)	1990–1997	544903	27		
Ranger	1997–2001	544904	27	FWD	IFS & ABS, '93 & Newer
Jeep					
Cherokee XJ	1994–1997	544904	27	RWD	Trac-lok Standard
Cherokee XJ	1984–2001	544904	27	RWD	
Cherokee XJ	1990–1993	544903	27	RWD	
Cherokee XJ	1984–2001	544903	27	RWD	
Cherokee	1984–1989	544927	27	RWD	Non C-Clip, IFS
Grand Wagoneer	1993	544903	27	RWD	
Pickup	1993–2000	544904	27	RWD	'93 & Newer
Comanche MJ	1986–1992	544903	27	RWD	
Comanche MJ	1986–1992	544904	27	RWD	'93 & Newer
Comanche	1986–1990	544927	27	RWD	Non C-Clip, IFS
Grand Cherokee ZJ	1993–1998	544903	27	RWD	
Grand Cherokee WJ	1999–2004	544903	27	RWD	
Grand Cherokee ZJ	1993–2000	544904	27	FWD	Select-Track, '93 & Newer
Grand Cherokee WJ	1999–2004	544904	27	RWD	'93 & Newer

Dana 35 (Fits Open OEM Carrier) Continued

Vehicle Make	Year	AG Part Number	Side Gear Spline	Drive Type	Special Notes
Wrangler TJ	1997–2006	544903	27	RWD	
Wrangler YJ	1987–1998	544903	27	RWD	
Wrangler YJ	1987–1998	544904	27	RWD	
Wrangler TJ	1997–2006	544904	27	RWD	
Wrangler TJ & YJ	1994–2000	544904	27	RWD	
Wrangler	1987–1990	544927	27	RWD	Non C-Clip, IFS
Wagoneer SJ	1984–1990	544903	27	RWD	
Wagoneer	1984–1990	544927	27	RWD	Non C-Clip, IFS
Mazda					
Pickup	1998–2000	544904	27	RWD	
Pickup (B4000)	1994–1997	544903	27	RWD	
Navajo	1991–1994	544903	27	RWD	
Mercury					
Zephyr	1997–2000	544904	27	FWD	
Mountaineer	1997–2000	544904	27	FWD	

Special Note: 544903 has a 1.625" hub size where side gear fits inside of carrier case. It will not work inside of Trac Lok positraction case. Fits inside Non-ABS models 544904 has a 1.560" hub size where side gear fits inside of carrier case. All 1994 & newer are 1.560", 1993 may be 1.560" or 1.625".

Dana 44 (Fits Open OEM Carrier)

Vehicle Make	Year	AG Part Number	Side Gear Spline	Drive Type	Special Notes
Chevrolet					
Suburban-C/K/RV 10 1500	1965–1968	544914	30	RWD	
Blazer Full Size	1969–1979	544914	30	FWD	
Pickup-C/K 10 Series	1963–1979	544914	30	FWD	
Pickup-C/K/R/V 10 1500	1965–1979	544914	30	FWD	
Suburban-C/K/R/V 20 2500	1971–1981	544914	30	FWD	
Dodge					
Pickup-D/W 100/150 & Ram 2500	1969–2001	544914	30	FWD	
Pickup-D/W 200/250 & Ram 2500	1969–2002	544914	30	FWD	
Ramcharger	1974–1993	544914	30	FWD	
Ford					
Pickup-F150	1967–1968	544914	30	RWD	
Pickup-F150	1977–1979	544914	30	RWD	
Bronco Full Size	1971–1977	544914	30	FWD	
Bronco Full Size	1978–1996	544914	30	FWD	Dana 44 Reverse Cut High Pinion
Pickup-F100/F150	1967–1977	544914	30	FWD	
Pickup-F100/F150	1976–1996	544914	30	FWD	Dana 44 Reverse Cut High Pinion
Pickup-F250	1977–1988	544914	30	FWD	Dana 44 Reverse Cut High Pinion
Pickup-F350	1981–1985	544914	30	FWD	Dana 44 Reverse Cut High Pinion
GMC					
Suburban C/K 1500	1965–1968	544914	30	RWD	
Jimmy Full Size	1969–1979	544914	30	FWD	
Pickup-C/K/R/V 1500 Series	1963–1979	544914	30	FWD	
Pickup-C/K/R/B 2500 Series	1963–1980	544914	30	FWD	
Suburban-C/K/R/V 1500	1965–1979	544914	30	FWD	
Suburban-C/K/R/V 2500	1971–1981	544914	30	FWD	
International					
Scout II	1971–1980	544914	30	RWD	
Scout II	1973–1980	544914	30	FWD	
Jeep					
Cherokee	1974–1979	544914	30	RWD	
Cherokee	1987–1989	544914	30	RWD	
CJ5	1969–1975	544914	30	RWD	
CJ6	1969–1975	544914	30	RWD	

Dana 44 (Fits Open OEM Carrier) Continued

Vehicle Make	Year	AG Part Number	Side Gear Spline	Drive Type	Special Notes
Chevy & GMC K10 & K20 4x4	1967–1980	544914	30	RWD	
Chevy K5 Blazer 4x4	1969–1980	544914	30	RWD	
Dodge					
Dodge W100 & W150 4x4 Pickup	1967–1993	544914	30	RWD	
Dodge W200 & W250 4x4 Pickup	1967–1984	544914	30	RWD	
Ram W1500 4x4 Pickup	1994–2001	544914	30	RWD	
Ram W2500 4x4 Pickup	1994–1997	544914	30	RWD	5.2L & 5.9L V8 Only
Ramcharger	1974–1993	544914	30	RWD	
GMC					
K5 Jimmy 4x4	1970–1980	544914	30	RWD	
Ford					
F100 4x4 Pickup	1967–1983	544914	30	RWD	
F150 4x4 Pickup	1973–1996	544914	30	RWD	
F250 4x4 Pickup	1967–1988	544914	30	RWD	
Bronco	1972–1996	544914	30	RWD	
IHC International Scout II	1971–1980	544914	30	RWD	
Isuzu Rodeo	1990–1997	544914	30	RWD	Some use GM 7 5/8" 10 Bolt C-Clip Rear
Jeep					
CJ5 & CJ6	1970–1975	544914	30	RWD	
CJ7	1986	544914	30	RWD	
Cherokee	1974–1979	544914	30	RWD	
Cherokee	1980–1988	544914	30	RWD	
Cherokee FSJ	1975–1985	544914	30	RWD	
Cherokee XJ	1987–1990	544914	30	RWD	
Comanche MJ Pickup	1986–1992	544914	30	RWD	
Commando	1967–1973	544914	30	RWD	
Grand Wagoneer	1986–1992	544914	30	RWD	
Grand Wagoneer	1984–1991	544914	30	RWD	
J10 & J20	1970–1986	544914	30	RWD	
Unlimited LJ	2004–2006	544914	30	RWD	
Wrangler TJ	1997–2006	544914	30	RWD	
Wrangler JK (2 Door & Unlimited 4 Door)	2007–2011	544914	30	RWD	
Wagoneer FSJ	1974–1985	544914	30	FWD	
Plymouth					
Trailduster	1974–1981	544914	30	FWD	

Special Note: Fits open carrier 3.92 and up.

Dana 60 (Fits Open OEM Carrier)

Not to be used in any Semi Float C-Clip type Dana 60 Rear Axles

Vehicle Make	Year	AG Part Number	Side Gear Spline	Drive Type	Special Notes
Chevrolet					
Van-G30 Express 3500	1975–1987	544919	35	RWD	Full Float
Pickup-C/K 30 Series	1977–1987	544919	35	FWD	
Pickup-R/V 3500 Series	1988–1991	544919	35	FWD	
Dodge					
Pickup-D/W 200/250 & RAM 2500	1975–1993	544919	35	FWD	
Pickup-D/W 300/250 & RAM 3500	1975–1993	544919	35	FWD	
Ford					
Excursion	2002–2005	544919	35	FWD	Dana 60 Reverse Cut High Pinion
Pickup-F250	1978–1979	544919	35	FWD	Dana 60 Reverse Cut High Pinion
Pickup-F250	2002–Present	544919	35	FWD	Dana 60 Reverse Cut High Pinion
Pickup-F350	1978–Present	544919	35	FWD	Dana 60 Reverse Cut High Pinion
F450 Super Duty	1999–2009	544919	35	FWD	Dana 60 Reverse Cut High Pinion
F550 Super Duty	1999–2009	544919	35	FWD	Dana 60 Reverse Cut High Pinion
GMC					
Pickup-C/K/R/V 3500 Series	1977–1987	544919	35	FWD	
Pickup-C/K/R/V 3500 Series	1988–1991	544919	35	FWD	

Dana 70 (Fits Open OEM Carrier)

Fits Dana Spicer Model 70, 70U, 70B, & 70 HD

Vehicle Make	Year	AG Part Number	Side Gear Spline	Drive Type	Special Notes
Chevrolet					
Pickup-C/K 30	1973-1987	544925	35	RWD	
Pickup-R/V 3500	1988-1991	544925	35	RWD	
Pickup-C/K 3500	1988-1991	544925	35	RWD	
Van-G30 Express 3500 Dana 70B	1975-1983	544925	35	RWD	
Van-G30 Express 3500 Dana 70HD	1975-1978	544925	35	RWD	
Van-G30 Express 3500 Dana 70U	1984-1991	544925	35	RWD	
Van-G30 Express 3500 Dana 70-3HD	1988-1991	544925	35	RWD	
Dodge					
Pickup-D/W 200/250/2500 Dana 70U	1987-1990	544925	35	RWD	
Pickup-D/W 300/350/3500 Dana 70B	1969-1990	544925	35	RWD	
Van-B200/2500 Dana 70B	1973-1978	544925	35	RWD	
Van-B300/3500 Dana 70B	1973-1978	544925	35	RWD	
Pickup-D/W 200/250 & RAM 3500 Dana 70B	1972-1974	544925	35	RWD	
Pickup-D/W 300/350 & RAM 3500 Dana 70B	1958-1965	544925	35	RWD	
Ford					
Pickup-F250 Dana 70B	1975-1978	544925	35	RWD	
Pickup-F250 Dana 70B	1975-1983	544925	35	RWD	
Pickup-F350 Dana 70U	1983-1984	544925	35	RWD	
Van-E300/350 Dana 70B	1974-1983	544925	35	RWD	
Van-E300/350 Dana 70HD	1981-2001	544925	35	RWD	
Van-E300/250 Dana 70U	1982-1994	544925	35	RWD	
GMC					
Pickup-C/K 3500	1973-1987	544925	35	RWD	
Pickup-R/V 2500	1988-1991	544925	35	RWD	
Pickup-C/K 3500	1988-1991	544925	35	RWD	
Van-G3500/Savana 3500 Dana 70B	1975-1978	544925	35	RWD	
Van-G3500/Savana 3500 Dana 70HD	1975-1978	544925	35	RWD	
Van-G3500/Savana 3500 Dana 70U	1984-1991	544925	35	RWD	
Van-G3500/Savana 3500 Dana 70-3HD	1988-1991	544925	35	RWD	

Special Note: This locker is only for use in one piece case and is not for use in factory two piece case.

MAX Lock Locker™ Warranty

Auburn Gear, LLC warrants that all new MAX Lock Locker™ products will be free from defects in material and workmanship for 2 years from the date of installation or 100,000 miles, whichever comes first.

The MAX Lock Locker™ parts warranty is voided if the part is used for competition or if it has been modified. To make a warranty claim on parts used in non-competitive applications, distributors should contact Auburn Gear, LLC and individuals should contact their Auburn Gear, LLC distributor. Auburn Gear, LLC to obtain a Return Goods Authorization number (RGA). You must submit your claim by returning the product to Auburn Gear, LLC within 30 days following discovery of the defect, along with your name, address, proof of purchase, RGA, and description of the defect in writing. Auburn Gear, LLC or its distributors or sellers may investigate the claim and request additional information. Failure to provide the appropriate notice or reasonable supporting information will constitute an absolute waiver and release of all claims you may have, and Auburn Gear, LLC will have no liability, under this warranty or otherwise, for that claimed defect. If Auburn Gear, LLC provides a refund, this warranty will terminate. A refund will be limited to the original purchase price of the product.

Auburn Gear, LLC warrants the original retail purchaser that all products will be free from defects in materials and workmanship for the periods shown below. Auburn Gear, LLC makes no other warranty of any kind, express or implied. All other warranties, including but not limited to an implied warranty of merchantability or fitness for a particular purpose, are excluded. This warranty is offered provided that the Auburn Gear, LLC product has been installed and maintained correctly, and that it has not been subject to modification, accident, abnormal use or misuse. This warranty does not cover, and Auburn Gear, LLC shall not be liable for, incidental or consequential damages, including loss of time, road service charges, labor charges, inconvenience, loss of vehicle use, loss of revenues, or loss or damage to personal property (including loss or damage to vehicle parts due to the failure of Auburn Gear, LLC product). In addition, this warranty does not cover, and Auburn Gear, LLC shall not be liable for, any undertaking, representation, or agreements made by dealers or other third parties selling Auburn Gear, LLC products. For more product warranty information please visit the Warranty section of aftermarket.auburngear.com

aftermarket.auburngear.com

260.925.3200