



Logitech.



User's guide

Logitech®  
Wireless Keyboard K350



# Contents

<b>English</b>	Setup, <b>4</b>	Features and troubleshooting, <b>8</b>
<b>Svenska</b>	Installation, <b>4</b>	Funktioner och felsökning, <b>15</b>
<b>Dansk</b>	Installation, <b>4</b>	Funktioner og problemløsning, <b>22</b>
<b>Norsk</b>	Konfigurering, <b>4</b>	Funksjoner og feilsøking, <b>29</b>
<b>Suomi</b>	Käyttöönotto, <b>4</b>	Toiminnot ja vianmääritys, <b>36</b>

 [www.logitech.com/support](http://www.logitech.com/support), **43**

**M/N: C-U0003**

Rating: 5V ---, 100mA

Approval No.: ETA-0035/2009/WRLO

CMIT ID: 2009DJ1025

11059/POSTEL/2009  
2100

FCC ID: JNZCU0003

IC: 4418A-CU0003

MADE IN CHINA

CCAI09LP0060T1

 **201 WW**  
09215061



**FC**



Complies with  
IEA Standards  
08101184

**Thank you!**

**Takk!**

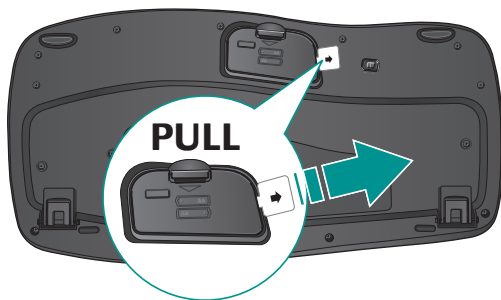
**Tak!**

**Kiitos!**

**Tack!**







**Svenska** DRA

**Dansk** TRÆK

**Norsk** TREKK

**Suomi** VEDÄ



## English

### **Your Keyboard is now ready for use.**

Optional: To enable and customize the keyboard hotkeys (F-keys and media keys), install the Logitech® SetPoint™ Software.

## Svenska

### **Tangentbordet kan nu användas.**

Valfritt: Om du vill aktivera och anpassa tangentbordets snabbknappar (F-tangenter och medieknappar), måste du installera Logitech® SetPoint™-programmet.

## Dansk

### **Tastaturet er klar til brug.**

Valgfrit: Hvis du vil bruge tastaturets genvejstaster (F-tasterne og multimedieknapperne), skal du installere Logitech® SetPoint™-softwaren.

## Norsk

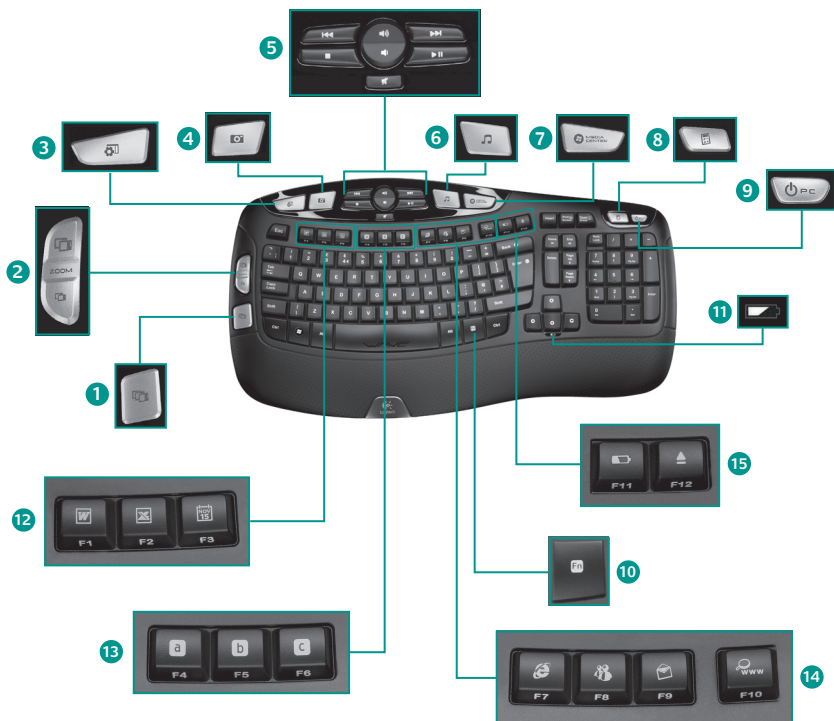
### **Tastaturet er klart til bruk.**

Valgfritt: Hvis du vil aktivere og tilpasse hurtigtastene på tastaturet (F-tastene og medietastene), må du installere programvaren Logitech® SetPoint™.

## Suomi

### **Näppäimistö on nyt käyttövalmis.**

Valinnaisesti: Näppäimistön pikanäppäinten (F- ja media-näppäinten) käyttöönotto ja mukauttaminen edellyttävät Logitech® SetPoint™ -ohjelmiston asentamista.





## Keyboard features

1. Windows Vista® Flip 3D (Application Switcher in Windows® XP)\*
2. Zoom in/out documents and images or scroll windows and Flip 3D\*
3. Windows Vista® Gadget (Yahoo® Widgets in Windows XP)\*
4. Windows Vista® Photo Gallery (My Pictures in Windows XP)\*
5. Multimedia navigation
6. Media player
7. Windows Media Center\*
8. Windows Calculator
9. PC sleep
10. **Fn** key (for use with F-keys)
11. Battery status indicator (**Fn**+**F11**)
12. **Productivity zone**
  - Fn**+**F1** Launches document application\*
  - Fn**+**F2** Launches spreadsheet application\*
  - Fn**+**F3** Launches calendar\*
13. **Favorites zone**
  - Fn**+**F4** to **F6** program your favorite application, folder, or web site with a long, simultaneous press of and the corresponding **F4**, **F5**, or **F6** key (just like the presets of a car radio).\*
14. **Internet zone**
  - Fn**+**F7** Launches Internet browser
  - Fn**+**F8** Launches instant message application\*
  - Fn**+**F9** Launches e-mail application
  - Fn**+**F10** Launches Windows search
15. **Convenience zone**
  - Fn**+**F11** Battery status check
  - Fn**+**F12** Opens/closes CD-DVD tray\*

\* Requires SetPoint™ Software.

## Keyboard features: F-key usage




User-friendly enhanced F-keys let you launch applications easily. To use the enhanced functions (blue icons), first press and hold the **Fn** key; second, press the F-key you want to use.

**Tip** In the software settings, you can invert the FN mode if you prefer to access directly the enhanced functions without having to press the FN key.\*

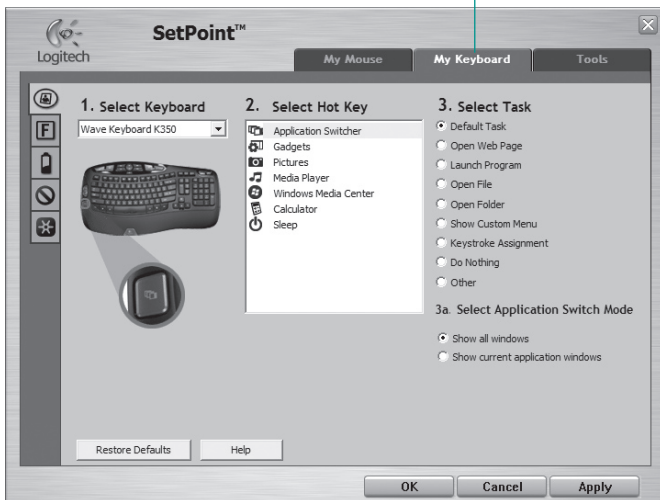


\* Requires SetPoint™ Software.

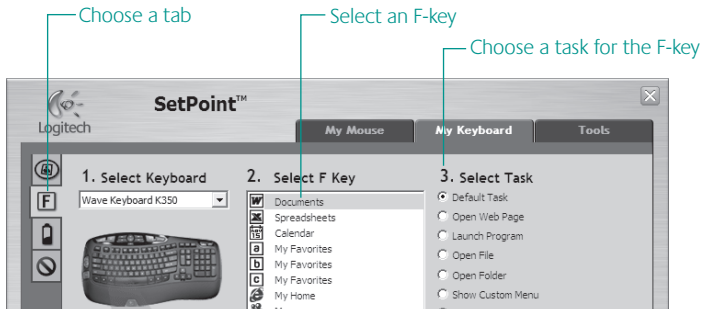
## Customizing the keyboard

1. Double-click the **Mouse and Keyboard Settings** icon  on the Windows® desktop to make changes.
2. To customize the keyboard, click the **My Keyboard** tab.
3. A series of tabs is shown on the left.

Click to customize the keyboard



4. Choose a tab, such as the keyboard **F-key Settings**. A picture of the keyboard is displayed showing F-keys (list 2) to which tasks can be assigned (list 3).
5. In the **2. Select F-key** list, highlight the F-key to be reassigned a task.
6. In the **3. Select Task** list, highlight the new task.
7. When you are done, click **OK** to save the new F-key assignments.



Use the same sequence of steps to specify changes on other keyboard tabs. For the keyboard, you can

- Specify settings for F-keys
- Specify settings for Hot keys
- Check battery level
- Disable keys you don't use often



## Plug it. Forget it. Add to it.

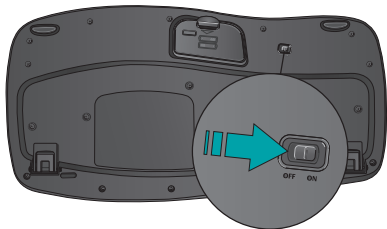
You've got a Logitech® Unifying receiver. Now add a compatible wireless mouse that uses the same receiver as your keyboard. It's easy. Just start the Logitech® Unifying software\* and follow the onscreen instructions. For more information and to download the software, visit

[www.logitech.com/unifying](http://www.logitech.com/unifying)

\*Go to Start / All Programs / Logitech / Unifying / Logitech Unifying Software

## Troubleshooting **Keyboard is not working**

- **Is the Power on?** The power switch for the keyboard must be in the **ON** position. Battery LED should light green.
- **How are the batteries?** Check the keyboard battery installation or replace the batteries. The keyboard uses two AA alkaline batteries.
- **Check the Unifying receiver.** Plug the Unifying receiver into a different USB port. Remove any metal object between the Unifying receiver and the keyboard that may interfere with reception.
- **Re-establish the connection.** Use the Unifying software to reset the connection between the keyboard and Unifying receiver. Refer to the Unifying section in this guide for more information (p. 13).
- **Move closer?** Try moving the keyboard closer to the Unifying receiver, or plug the Unifying receiver into the receiver extender cable to bring it closer to the keyboard.
- **Install the Logitech SetPoint Software.** To enable and customize the keyboard hotkeys (F-keys, Zoom keys, Vista keys, and media keys), install the Logitech SetPoint Software.
- **Restart the computer.**



Visit [www.logitech.com/comfort](http://www.logitech.com/comfort) for more information about using your product, and for ergonomics.