



2020 Design

# LOOX LED DESIGN GUIDE



# LEADING THE INDUSTRY IN LED CABINET LIGHTING

Recognizing the potential of LED technology to transform the role of lighting in design, Häfele developed an innovative lighting system specifically to address the unique challenges and requirements for integrating lighting into cabinetry. The Loox LED lighting system offers designers and manufacturers a comprehensive range of solutions that assures maximum flexibility and performance.

Häfele's Loox LED lighting system offers solutions for practically any area of a home or business including under cabinets, drawer and cabinet interiors, closet fixtures and cubbies, and other built in furniture.



# TABLE OF CONTENTS

LED LIGHTING ADVANTAGES . . . . . page 4

LIGHTING APPLICATIONS . . . . . page 5

PRODUCTS IN LOOX 2020 CATALOG . . . . . pages 6-9

USING THE LOOX 2020 CATALOG. . . . . pages 10-22

    Selecting Cabinet Lights . . . . . page 11

    Viewing Light Attributes and Renderings . . . . . page 15

    Selecting LED Drivers (power supplies) . . . . . page 17

    Selecting Optional Accessories . . . . . page 21

LIGHTING ITEM LIST . . . . . page 23

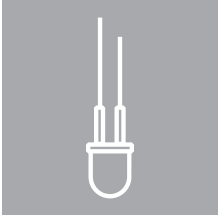
CREATING LIGHTING QUOTES . . . . . page 24

PLACING ORDERS WITH HAFELE . . . . . page 25

HAFELE'S LIGHTING DESIGN SERVICE . . . . . page 25

# LED LIGHTING ADVANTAGES

LEDs (Light Emitting Diodes) have unique features that make them ideally suited for cabinet lighting applications. LED lights offer beautiful, controllable and discrete illumination with unlimited creative possibilities. Here are just a few of their practical advantages:



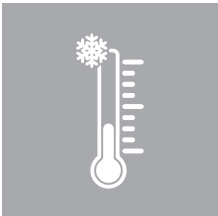
## LONG LASTING

LED lights have an extremely long service life of up to 25 years or more than 30,000 to 50,000 hours. This dramatically reduces maintenance and replacement costs.



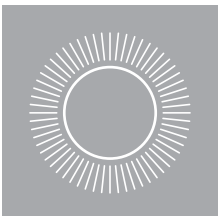
## ENERGY-SAVING

LED lights use an impressive 90 percent less power than conventional light bulbs. They can be used to create modern residential and commercial lighting scenarios, and still be in line with the energy saving trend.



## COOLER

Because of their extremely low power consumption, LED lights generate hardly any heat. This makes LED lighting systems especially suitable for displays and enclosed spaces.



## POWERFUL

Even with their small footprint, LED lights are bright and produce a saturated light color. They achieve full brightness as soon as they're switched on, and are fully dimmable.



## FLEXIBILITY

From puck light to flexible strip lights, LED lights are offered in a variety of shapes and sizes; giving you the ability to integrate lighting into cabinetry and furniture in ways never before possible



## CUSTOMIZABLE LIGHTING EFFECTS

With LED lights, you can tailor the light temperature, brightness and beam angle to achieve the precise lighting effect that you desire.

# LIGHTING APPLICATIONS

Häfele's Loox LED Catalog for 2020 features turn-key solutions for the most requested cabinet lighting applications. The products in the 2020 catalog are primarily intended for use with face frame cabinetry, and they can easily be installed on location during cabinet installation.



## UNDER CABINET LIGHTING

Proper task lighting is a necessity in any kitchen design. Because of their superior energy efficiency and low heat output, LED lights offer significant advantages vs. halogen, fluorescent and other lighting technologies. Häfele's Loox LED catalog for 2020 includes two under cabinet lighting options: Light Strips and Puck Lights.



## INTERIOR CABINET LIGHTING

To maximize visibility inside cabinet spaces, Häfele has developed turn-key kits for integrating interior lighting into base and wall cabinets that turns on when the cabinet door is opened and off when the door is closed.



## DRAWER LIGHTING

Drawer lights increase functionality and optimize every inch of space within a drawer. Loox drawer light kits include flexible silicone light strips with an integrated switch that activates the lights when the drawer is opened.



## ACCENT LIGHTING

Interior accent lighting for cabinets with glass doors can have a dramatic visual effect.

# PRODUCTS IN LOOX 2020 CATALOG

## UNDER CABINET LIGHT STRIPS

Light Strips provide smooth, even lighting that is ideally suited for under cabinet task lighting applications. The surface mount profiles are easily installed and concealed behind the cabinet face frame. The light strips are offered in a range of widths to fit any size cabinet and are available in warm and cool color temperatures. The strips are available with a built-in dimmer switch and are linkable so that all connected strips can be controlled with a single switch.



### LIGHT STRIPS WITH LINKABLE CABLES

Lumen per watt: 85

CRI: 82

Material: Aluminum, clear anodized; Lens: milk

| Light Color (K) | Length     | Number of LEDs | Wattage | Lumen | Item No.   |
|-----------------|------------|----------------|---------|-------|------------|
| 3000 warm white | 152 (6")   | 12             | 1.0     | 83    | 833.73.531 |
| 4000 cool white |            |                |         |       | 833.73.551 |
| 3000 warm white | 229 (9")   | 21             | 1.7     | 145   | 833.73.533 |
| 4000 cool white |            |                |         |       | 833.73.553 |
| 3000 warm white | 305 (12")  | 30             | 2.9     | 207   | 833.71.223 |
| 4000 cool white |            |                |         |       | 833.71.228 |
| 3000 warm white | 381 (15")  | 39             | 3.2     | 269   | 833.73.535 |
| 4000 cool white |            |                |         |       | 833.73.555 |
| 3000 warm white | 457 (18")  | 48             | 3.9     | 332   | 833.73.537 |
| 4000 cool white |            |                |         |       | 833.73.557 |
| 3000 warm white | 533 (21")  | 57             | 4.6     | 394   | 833.73.539 |
| 4000 cool white |            |                |         |       | 833.73.559 |
| 3000 warm white | 610 (24")  | 66             | 5.8     | 455   | 833.71.224 |
| 4000 cool white |            |                |         |       | 833.71.229 |
| 3000 warm white | 686 (27")  | 75             | 6.1     | 518   | 833.73.541 |
| 4000 cool white |            |                |         |       | 833.73.563 |
| 3000 warm white | 762 (30")  | 84             | 7.3     | 580   | 833.71.225 |
| 4000 cool white |            |                |         |       | 833.71.230 |
| 3000 warm white | 838 (33")  | 93             | 7.6     | 642   | 833.73.543 |
| 4000 cool white |            |                |         |       | 833.73.565 |
| 3000 warm white | 914 (36")  | 102            | 8.8     | 704   | 833.71.226 |
| 4000 cool white |            |                |         |       | 833.71.231 |
| 3000 warm white | 991 (39")  | 111            | 9.0     | 767   | 833.73.545 |
| 4000 cool white |            |                |         |       | 833.73.567 |
| 3000 warm white | 1067 (42") | 120            | 10.2    | 828   | 833.71.227 |
| 4000 cool white |            |                |         |       | 833.71.232 |
| 3000 warm white | 1143 (45") | 129            | 10.5    | 891   | 833.73.547 |
| 4000 cool white |            |                |         |       | 833.73.569 |

### Supplied With

100 mm (4") male mini driver cable

100 mm (4") female mini driver cable

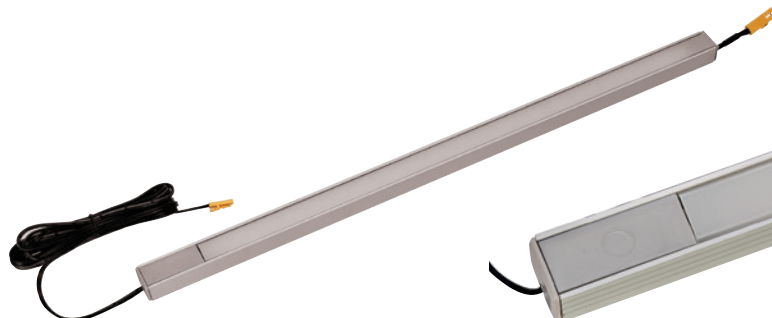
Mounting brackets; Screws; Two-sided mounting tape

### Note

An Extension Lead will be required if not linked to a Light Strip with Inline Dimmer Switch. Extension Leads are sold separately.

See page 20.

## UNDER CABINET LIGHT STRIPS



### LIGHT STRIPS WITH BUILT-IN DIMMER SWITCH

Lumen per watt: 85

CRI: 82

Material: Aluminum, clear anodized; Lens: milk

| Light Color (K) | Length     | Number of LEDs | Wattage | Lumen | Item No.   |
|-----------------|------------|----------------|---------|-------|------------|
| 3000 warm white | 152 (6")   | 9              | 0.7     | 62    | 833.73.530 |
| 4000 cool white |            |                |         |       | 833.73.550 |
| 3000 warm white | 229 (9")   | 18             | 1.5     | 124   | 833.73.532 |
| 4000 cool white |            |                |         |       | 833.73.552 |
| 3000 warm white | 305 (12")  | 27             | 2.4     | 186   | 833.71.213 |
| 4000 cool white |            |                |         |       | 833.71.218 |
| 3000 warm white | 381 (15")  | 36             | 2.9     | 249   | 833.73.534 |
| 4000 cool white |            |                |         |       | 833.73.554 |
| 3000 warm white | 457 (18")  | 45             | 3.7     | 311   | 833.73.536 |
| 4000 cool white |            |                |         |       | 833.73.556 |
| 3000 warm white | 533 (21")  | 54             | 4.4     | 373   | 833.73.538 |
| 4000 cool white |            |                |         |       | 833.73.558 |
| 3000 warm white | 610 (24")  | 63             | 5.4     | 435   | 833.71.214 |
| 4000 cool white |            |                |         |       | 833.71.219 |
| 3000 warm white | 686 (27")  | 72             | 5.9     | 497   | 833.73.540 |
| 4000 cool white |            |                |         |       | 833.73.562 |
| 3000 warm white | 762 (30")  | 81             | 6.8     | 559   | 833.71.215 |
| 4000 cool white |            |                |         |       | 833.71.220 |
| 3000 warm white | 838 (33")  | 90             | 7.3     | 622   | 833.73.542 |
| 4000 cool white |            |                |         |       | 833.73.564 |
| 3000 warm white | 914 (36")  | 99             | 8.3     | 683   | 833.71.216 |
| 4000 cool white |            |                |         |       | 833.71.221 |
| 3000 warm white | 991 (39")  | 108            | 8.8     | 746   | 833.73.544 |
| 4000 cool white |            |                |         |       | 833.73.566 |
| 3000 warm white | 1067 (42") | 117            | 9.7     | 807   | 833.71.217 |
| 4000 cool white |            |                |         |       | 833.71.222 |
| 3000 warm white | 1143 (45") | 126            | 10.2    | 870   | 833.73.546 |
| 4000 cool white |            |                |         |       | 833.73.568 |

### Supplied With

2000 mm (78 3/4") driver connection cable with integrated switch

100 mm (4") female mini driver cable

Mounting brackets

Screws

Two-sided mounting tape

## INTERIOR CABINET LIGHT KITS

Loox interior cabinet light kits provide a turn-key solution for one and two-door base or wall cabinets. Each kit includes flexible silicone LED light strips, door switches, cables and accessories for installation. The LED strips can be trimmed to fit the cabinet height, and they have a peel and stick backing so they can be applied to the inside of the cabinet face frames.

### 1 DOOR LIGHT KIT



Wattage: 9.25

LEDs: 114

L x W x H: 960 x 8 x 2 mm (38" x 5/16" x 1/16")

Material: Housing and Switch: Plastic; Color: black

Wire Management: Plastic; Color: tan

Ribbon: Silicone; Color: white

| Light Color | Lumen | Item No.   |
|-------------|-------|------------|
| warm white  | 745   | 833.73.589 |
| cool white  | 750   | 833.73.591 |

#### Supplied With

2 Silicone ribbons

Door switch

Switch housing

1000 mm (39 3/8") Switch cable

Splitter cable

500 mm (19 11/16") Lead extension

2 - 50 mm (2") Leads with clips

2 - 10" and 1- 20" Cable management channels

### 2 DOOR LIGHT KITS



Wattage: 9.25

LEDs: 114

L x W x H: 960 x 8 x 2 mm (38" x 5/16" x 1/16")

Material: Housing and Switch: Plastic; Color: black

Wire Management: Plastic; Color: tan

Ribbon: Silicone; Color: white

| Light Color | Lumen | Item No.   |
|-------------|-------|------------|
| warm white  | 745   | 833.73.588 |
| cool white  | 750   | 833.73.590 |

#### Supplied With

2 Silicone ribbons

2 Door switches

2 Switch housings

2 - 1000 mm (39 3/8") Switch cables

2 - 50 mm (2") Leads with clips

2 - 10" and 1- 20" Cable management channels



## DRAWER LIGHT KITS

Loox Drawer light kits provide a turn-key solution for lighting drawer interiors. Each kit includes a flexible silicone LED light strip, a drawer switch, cables and accessories for installation. The LED strips can be trimmed to fit the drawer width, and they have a peel and stick backing so they can be applied to the inside of the drawer opening.



Wattage: 2.92

LEDs: 36

L x W x H: 610 x 8 x 2 mm (24" x 5/16" x 1/16")

Material: Housing and Switch: Plastic; Color: black

Wire Management: Plastic; Color: tan

Ribbon: Silicone; Color: white

| Light Color | Lumen | Item No.   |
|-------------|-------|------------|
| warm white  | 235   | 833.73.580 |
| cool white  | 236   | 833.73.585 |

### Supplied With

Silicone ribbon

Drawer switch

Switch housing

1000 mm (39 3/8") Switch cable

50 mm (2") Lead with clip

1 - 10" and 1 - 20" Cable management channels

## PUCK LIGHT KITS

Puck Lights can be used for either under cabinet task lighting or for accent lighting in cabinets with glass doors. Loox pucks are modular and are offered with your choice of Round or Square trim rings for surface mounting.



Wattage: 3.8

Ø x H: 65 x 15.6 mm (2 9/16" x 5/8")

Material: Trim Ring: Plastic; Color: silver colored

Light: Plastic, frosted

| Light Color | Lumen | Round      | Square     |
|-------------|-------|------------|------------|
| warm white  | 280   | 833.72.251 | 833.72.252 |
| cool white  | 302   | 833.72.253 | 833.72.254 |

### Supplied With

Puck light

Round or square trim ring

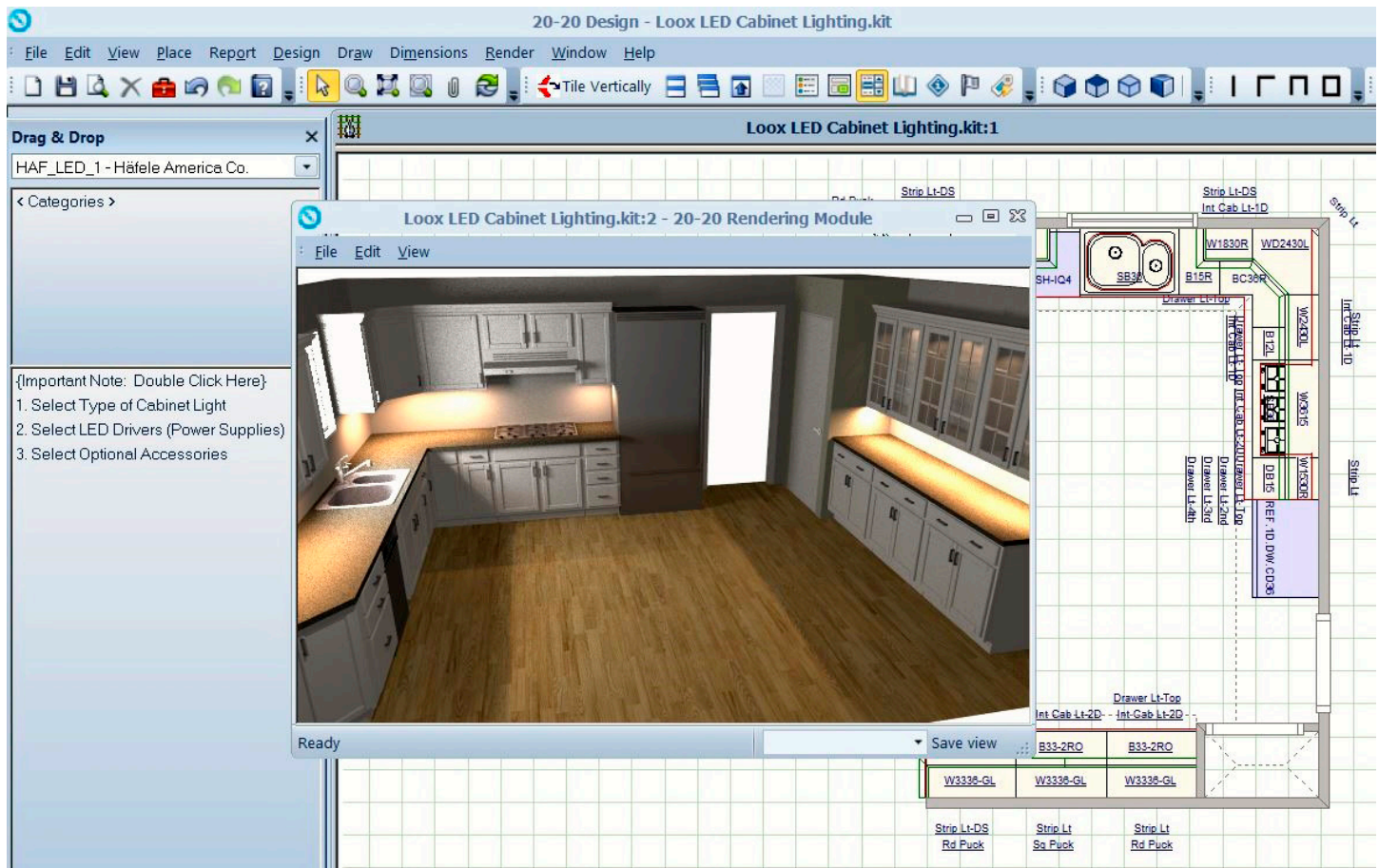
2000 mm (78 3/4") Lead

# USING HÄFELE'S LOOX LED 2020 CATALOG

Häfele's Loox LED catalog for 2020 simplifies the process of selecting, quoting and ordering the Loox components needed to add cabinet lighting to your kitchen designs. Once you have completed your cabinet layout, open the Häfele LED catalog and complete these three simple steps:

- 1) Select the type of lights you want and attach them to cabinets in your layout
- 2) Determine how many LED Drivers are needed and add them to the Item List
- 3) Add optional dimmer control and cable accessories to the Item List

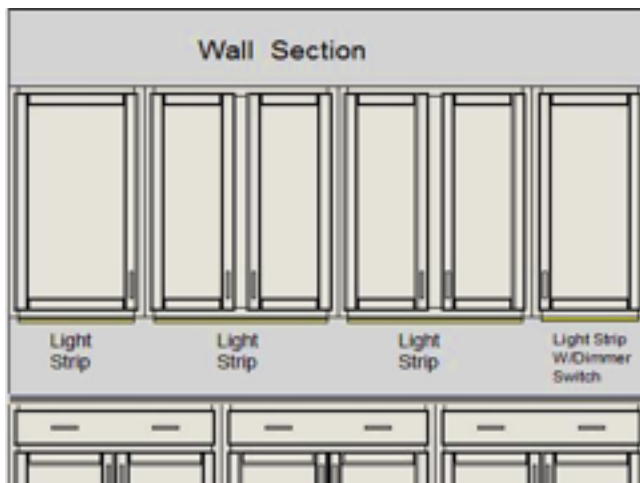
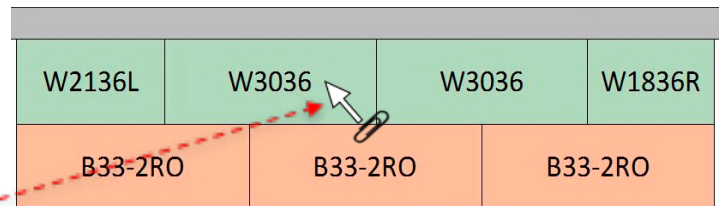
At any time during the process, you can review details about the lights or view renderings of how they will look.



## SELECTING CABINET LIGHTS

### UNDER CABINET LIGHTS - LIGHT STRIPS

- Choose Warm or Cool color temperature
- Select **STRIP** (Loox Light Strip) or **STRIP-DS** (Loox Light Strip with Dimmer Switch)
- Drag and attach the selected Light Strip to any Wall Cabinet in your floor plan; 2020 will automatically select the appropriate length light strip based on the cabinet width



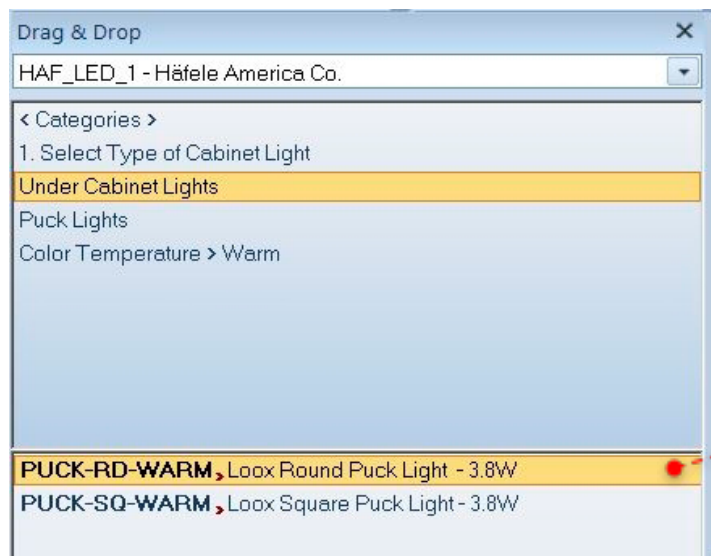
#### DESIGN TIP

Select only one cabinet per wall section to receive a Light Strip with Dimmer Switch. It should be attached to a cabinet at one of the ends of the section. The Light Strips for all of the cabinets in the wall section link together and are controlled by the Light Strip with Dimmer Switch.

## SELECTING CABINET LIGHTS

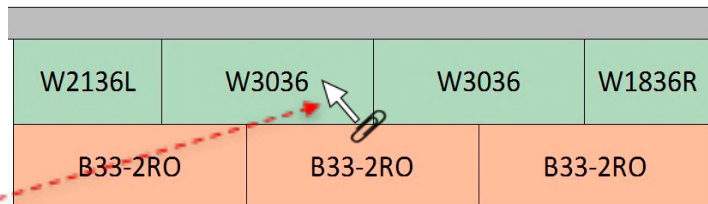
### UNDER CABINET PUCK LIGHTS

- Choose Warm or Cool color temperature
- Select **PUCK-RD** (Loox Round Puck Light) or **PUCK-SQ** (Loox Square Puck Light)
- Drag and attach the selected light to any Wall Cabinet in your floor plan
- Select the number of pucks you would like to add to the cabinet and click Apply; 2020 will automatically distribute the lights evenly within the width of the cabinet



### DESIGN TIPS

To achieve an even distribution of light, use one light for every 6-10 inches of space. The Multizone Remote Dimmer (Optional Accessories) is recommended for puck light applications.



## SELECTING CABINET LIGHTS

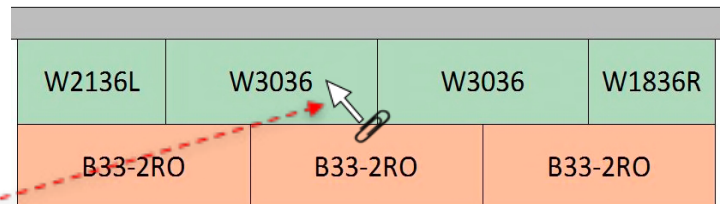
### ACCENT LIGHTS FOR CABINETS WITH GLASS DOORS

- Choose Warm or Cool color temperature
- Select **PUCK-RD** (Loox Round Puck Light) or **PUCK-SQ** (Loox Square Puck Light)
- Drag and attach the selected light to any Wall Cabinet in your floor plan
- Select the number of pucks you would like to add to the cabinet and click Apply; 2020 will automatically distribute the lights evenly within the width of the cabinet

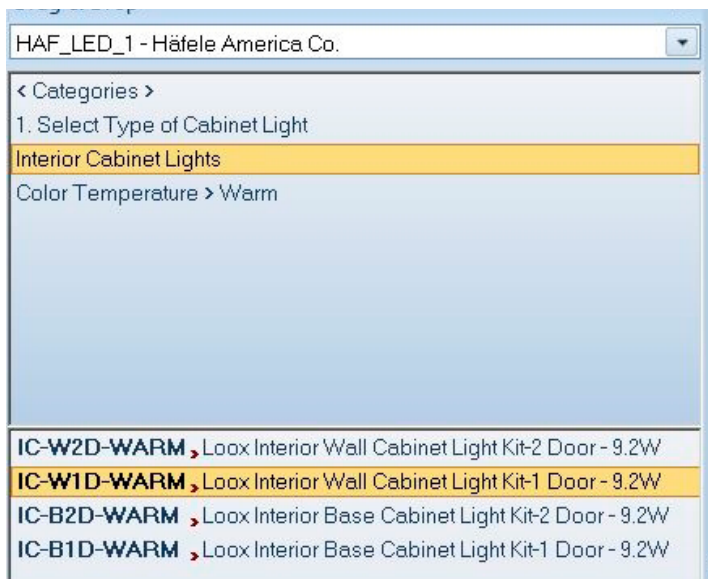


### DESIGN TIPS

To achieve an even distribution of light, use one light for every 6-10 inches of space. For cabinets with shelves, use glass shelves. The Multizone Remote Dimmer (Optional Accessories) is recommended for puck light applications.

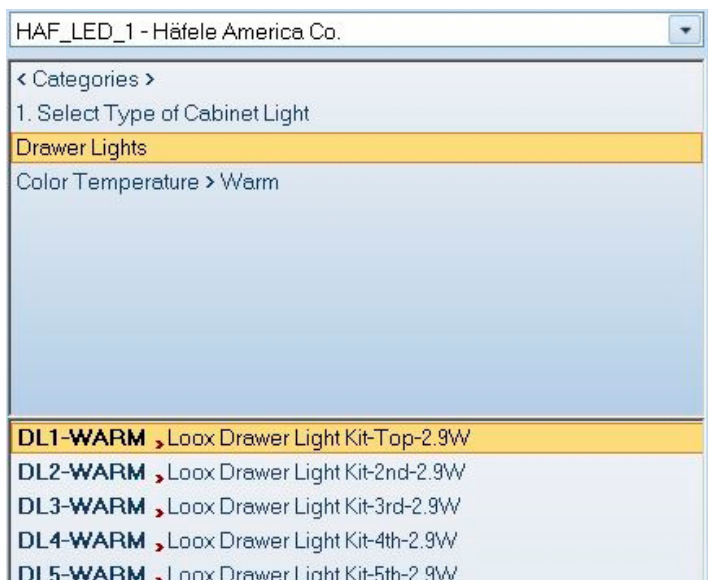


## SELECTING CABINET LIGHTS



### INTERIOR CABINET LIGHTS

- Choose Warm or Cool color temperature
- Select appropriate light for the cabinet type:
  - W1D** (Wall Cabinet – 1 Door)
  - W2D** (Wall Cabinet – 2 Doors)
  - B1D** (Base Cabinet – 1 Door)
  - B2D** (Base Cabinet – 2 Doors)
- Drag and attach the item to the cabinet



### DRAWER LIGHTS

- Choose Warm or Cool color temperature
- Select appropriate light for the drawer:
  - DL1** (Top Drawer)
  - DL2** (2nd Drawer from top)
  - DL3** (3rd Drawer from top)
  - DL4** (4th Drawer from top)
  - DL5** (5th Drawer from top)
- Drag and attach the item to a cabinet in your layout
- Repeat for each drawer in the cabinet

### DESIGN TIPS

When adding lights to a cabinet with multiple drawers, connect the lights with a 3-way or 6-way distributor (Optional Accessories).

## VIEWING LIGHT ATTRIBUTES

- To review details about lights that have been added to the cabinet, select the cabinet and click Attributes. The Loox component will appear in the Item and its components section underneath the 3D Display.
- Click on the Loox component and open the Variables Tab in the right column to see item details including:

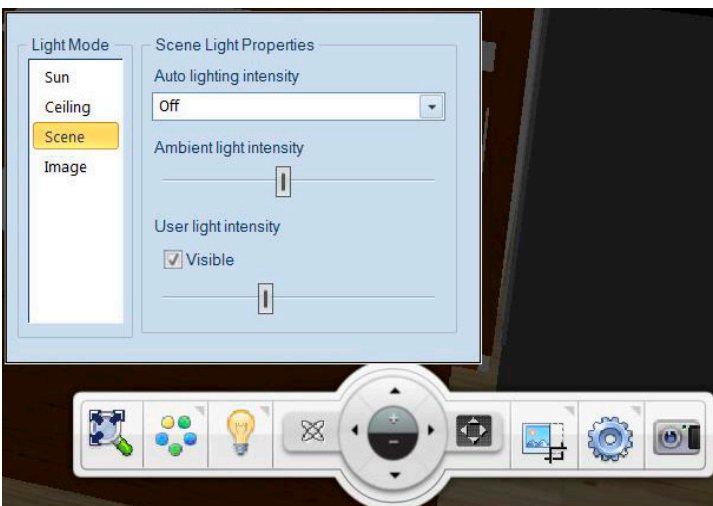
|                            |   |
|----------------------------|---|
| Wattage                    | Used to calculate LED # of LED Drivers required         |
| Color Temperature (Kelvin) | Warm lights - 3000K; Cool Lights - 5000K                |
| Light Output (Lumen)       | Indicates quantity of light emitted                     |
| Description                | Includes item description and Wattage                   |
| Häfele Model #             | Häfele product group                                    |
| Manufacturer Code          | Häfele 8 digit Item number; Use this number for orders. |
| Price                      | Häfele SRP  |

The screenshot shows the 'Attributes for W2436' window with the 'Variables' tab selected. The interface includes a 3D display of a cabinet with a light strip, a component tree, and a detailed variable list.

| Variable                     | Value                         |
|------------------------------|-------------------------------|
| Width                        | 21"                           |
| 1_Wattage                    | 4.6                           |
| 2_Color Temperature (Kelvin) | 3000K                         |
| 3_Light Output (Lumen)       | 394                           |
| 4_Häfele Model #             | 2029W                         |
| Catalog name                 | HAF_LED_1                     |
| Description                  | Loox Light Strip - 21" - 4.6W |
| Floor plan description       | Strip Lt                      |
| Manufacturer code            | 833.73.539                    |
| Positioning in Depth         | 10"                           |
| PRice1                       | \$48.00                       |
| User code                    | STRIP-WARM                    |

## VIEWING RENDERINGS

2020's powerful rendering engine allows you to see the dramatic effect that cabinet lighting can have on your kitchen design. Following are some basic tips for viewing cabinet lights in your renderings. For additional help, go to [www.2020.net](http://www.2020.net).



### DESIGN TIPS

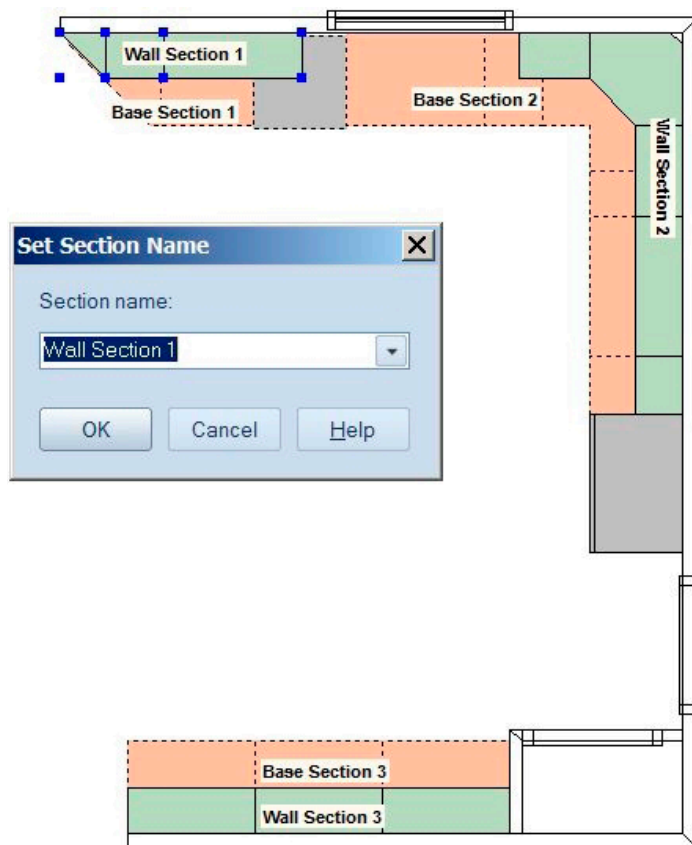
Open cabinet doors and drawers to see Interior Cabinet Lights and Drawer Lights in the rendering. Turn off Auto Lighting feature to better see the Ambient Light and User Light. Click the Lightbulb icon in the 2020 rendering dashboard and open the **Scene** light mode. Make sure the **Visible** check box is selected under **User Light Intensity**. Move the slider bars to adjust intensity of Ambient Light and User Light.



## SELECT LED DRIVERS (POWER SUPPLIES)

The Loox LED Driver is a device that converts high voltage alternating electrical current (AC) that comes from a wall outlet to a regulated low voltage current (DC) appropriate for powering Loox LED diodes. All Loox lights and components are powered by the driver which plugs into a standard wall outlet.

After you have added the lights to your plan, you will need to determine how many drivers will be required.



### DETERMINING NUMBER OF DRIVERS NEEDED

The number of drivers needed is based on 2 primary factors:

- 1) The number of Cabinet Sections in your layout
- 2) The total Wattage requirements of the lights in each Cabinet Section

### CABINET SECTIONS

You will need at least one driver for each cabinet section. A cabinet section is a group of contiguous wall or base cabinets. When creating your design, make sure that there is a wall outlet available for each cabinet section that you are adding lighting to. Outlets used for Loox drivers should be located out of normal sight lines. More information about Outlet Placement can be found on page 18.

### DESIGNER TIP

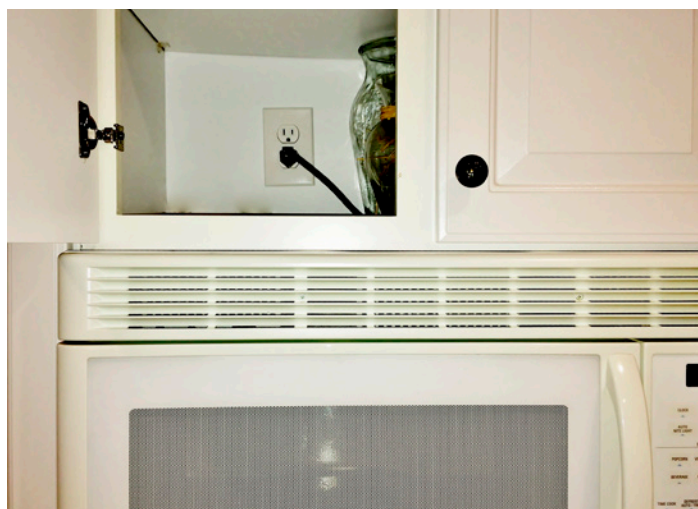
Use the 2020 **Section Name** function to define each base and wall cabinet section in your layout.

## OUTLET PLACEMENT

Loox LED lights can easily be installed without the need for an electrician, because the driver is powered by a standard wall outlet. However, when planning your kitchen, make sure that there is a wall outlet available for each cabinet section that you plan to add lighting to. Outlets used for Loox drivers should be located in places that are out of normal sight lines. For wall cabinets, the typical location for outlets is either above the cabinets, or inside a cabinet above a microwave or range hood. Outlets for base cabinets are typically located in the back of cabinets or behind an adjacent appliance such as a refrigerator.



OUTLET ABOVE CABINET



OUTLET INSIDE CABINET, ABOVE MICROWAVE

## CONTROLLING OUTLETS WITH A WALL SWITCH

If you want to control under cabinet or accent lights with a traditional wall switch, plug the driver into a “Switched” outlet. With this method, the dimming function can still be controlled by the built-in dimmer switch or the multi-zone dimmer, but the lights can be turned on or off with the wall switch.



OUTLET LOCATED ABOVE CABINET CONTROLLED BY WALL SWITCH

**Note**

If a cabinet section includes cabinet interior or drawer lights, you should use a “half hot” or “always on” outlet. In this scenario, you will need a separate driver for the under cabinet lights and the cabinet interior lights.

## CALCULATING WATTAGE REQUIREMENTS

The standard Loox Driver has a 60 Watt capacity. All Loox lights have a Wattage rating. The Wattage rating for each of the Loox lights is included in their product Description. Wattage can also be found in the product specifications pages in this design guide.

To calculate the total Wattage requirements for a cabinet section, add the Wattage ratings for the lights that have been added to a cabinet section. If the combined requirement exceeds 60 Watts, you will need two drivers for that section.

### Note

In most situations, wattage requirements for a cabinet section will rarely exceed 60W.

| Section Wall Section 3 |     |                            |                            |   |  |           |
|------------------------|-----|----------------------------|----------------------------|---|--|-----------|
| #                      | Qty | User code<br>Catalog       | Manuf. code<br>Manuf. Name | Description                                   |  | Fin. Side |
| 31                     | 1   | W3336-GL<br>SAMPLE_F_1     | W3336-GL                   | Wall w/Glass                                  |  |           |
| 31.1                   | 1   | STRIP-WARM<br>HAF_LED_1    | 833.71.225                 | Loox Light Strip - 30" - 6.8W                 |  | B         |
| 31.2                   | 3   | PUCK-RD-WARM<br>HAF_LED_1  | 833.72.251                 | Loox Round Puck Light - 3.8W                  |  | B         |
| 32                     | 1   | W3336-GL<br>SAMPLE_F_1     | W3336-GL                   | Wall w/Glass                                  |  |           |
| 32.1                   | 1   | STRIP-WARM<br>HAF_LED_1    | 833.71.225                 | Loox Light Strip - 30" - 6.8W                 |  | B         |
| 32.2                   | 3   | PUCK-SQ-WARM<br>HAF_LED_1  | 833.72.252                 | Loox Square Puck Light - 3.8W                 |  | B         |
| 33                     | 1   | W3336-GL<br>SAMPLE_F_1     | W3336-GL                   | Wall w/Glass                                  |  | R         |
| 33.1                   | 1   | STRIP-DS-WARM<br>HAF_LED_1 | 833.71.215                 | Loox Light Strip w/Dimmer Switch - 30" - 6.8W |  | B         |
| 33.2                   | 3   | PUCK-RD-WARM<br>HAF_LED_1  | 833.72.251                 | Loox Round Puck Light - 3.8W                  |  | B         |

\*: non-plan item

### DESIGN TIP

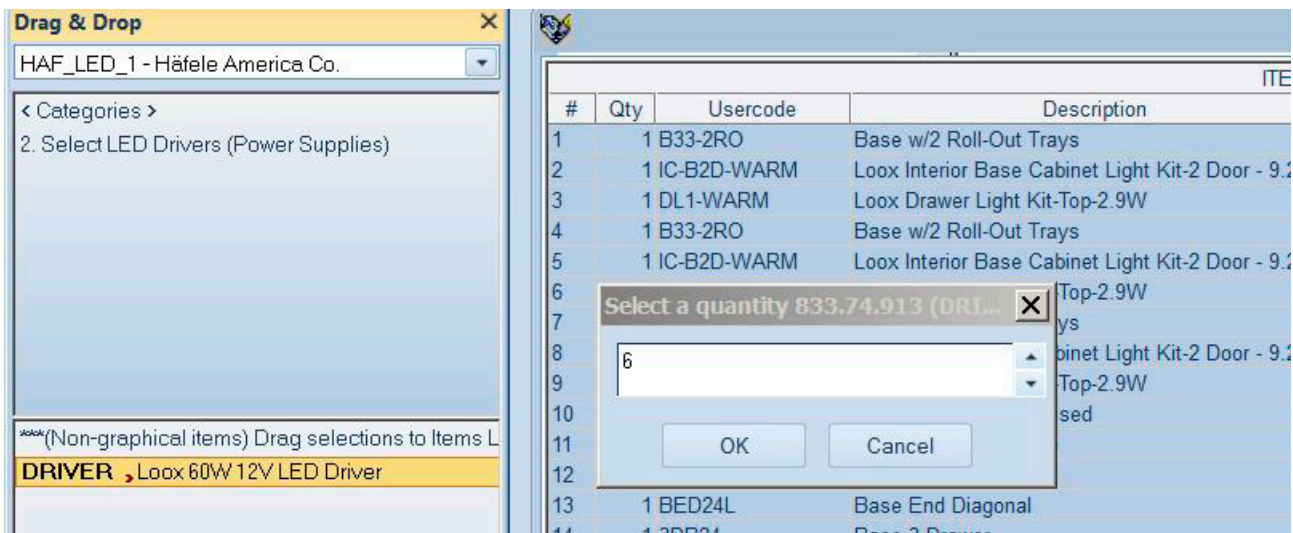
Use 2020's Report Manager to run an **Items by Section** report to view the lights and their wattage requirements that have been added to each cabinet section. When calculating the Wattage, be sure to check the quantity for each line item. In this example, the Wattage requirement for the section is 54.6 Watts.

IN THE EXAMPLE ABOVE, THE WATTAGE REQUIREMENTS IS 54.6 WATTS.

## ADDING DRIVERS TO THE ITEM LIST

Once you have determined the number of Drivers needed, add the Drivers to your Items List:

- Open the Items List for your design
- Click Select LED Drivers (Power Supplies) Drag the Loox 60W 12V LED Driver to the Items List
- Indicate the number of drivers in the dialog box and click OK



## SELECT OPTIONAL ACCESSORIES



REMOTE RECEIVER



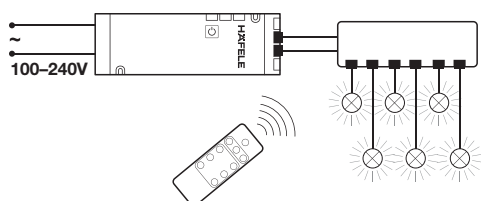
REMOTE CONTROL



REMOTE SWITCH & SWITCH HOUSING

### MULTI-ZONE WIRELESS DIMMER SYSTEM

| Description                      | Item No.   |
|----------------------------------|------------|
| 6-channel Remote Receiver        | 833.73.741 |
| Remote Control                   | 833.89.121 |
| Remote Switch                    | 833.89.123 |
| Switch Housing for Remote Switch | 833.89.122 |



With the Loox multi-zone wireless dimmer system, you can control all the cabinet lights in the kitchen with a single remote control. The 6-channel remote receiver and remote control provides on/off or dimming for up to six lights and allows you to create and save up to three lighting scenes. The remote can control lights on up to 10 receivers.

The Remote Switch can be used as an On/Off Dimmer switch for all the lights connected to the multi-zone receivers.

#### DESIGN TIPS

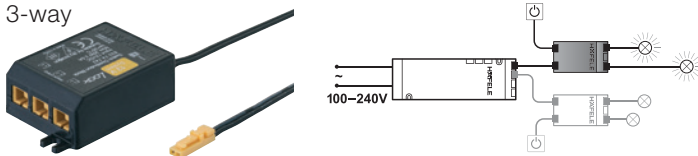
The Multi-zone Dimmer is recommended for controlling applications with puck lights – both under cabinet and accent lights. Multi-zone Dimmers should not be used for light strips with the in-line dimmer switches or for drawer and interior cabinet lights. Be sure to order a separate receiver for each Cabinet Section that you want to control with the Remote Control.

## SELECT OPTIONAL ACCESSORIES

### DISTRIBUTORS

3-way and 6-way distributors allow you to operate multiple lights from a single driver port. Distributors are helpful for situations when you have more than six lights controlled by a single driver.

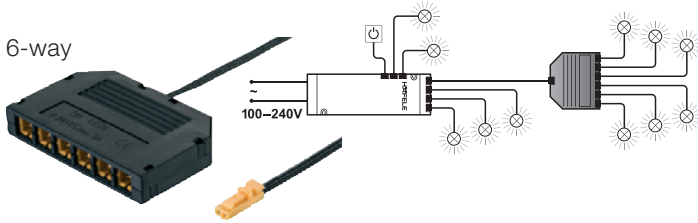
3-way



Material: Plastic; Color: black

| Description | Item No.   |
|-------------|------------|
| 3-way       | 833.74.769 |
| 6-way       | 833.74.724 |

6-way



### EXTENSION LEADS

Loox lights are supplied with 1 m (39 3/8") or 2 m (78 3/4") leads. Depending on the location of the driver and the configuration of the cabinet section, extension leads may be required. The maximum lead length from the driver to the light is 6 m (236 7/16").



Material: Plastic; Color: black

| Length             | Item No.   |
|--------------------|------------|
| 300 mm (11 13/16") | 833.74.769 |
| 500 mm (19 5/8")   | 833.74.724 |
| 610 mm (24")       | 833.74.770 |
| 1000 mm (39 5/8")  | 833.74.725 |
| 2000 mm (78 3/4")  | 833.74.726 |

# LIGHTING ITEM LIST

Once you have added the lights, drivers and optional Loox accessories to your plan, 2020 provides multiple options for reviewing items and prices. To quickly view a summary of the lighting, it is helpful to set up a separate Lighting Tab.

| Incl/Excl | Set Type | Columns | Operator | Value     |        |
|-----------|----------|---------|----------|-----------|--------|
| Include   | Items    | Catalog | Contains | HAF_LED_1 | Delete |
|           |          |         |          |           | Delete |
|           |          |         |          |           |        |
|           |          |         |          |           |        |
|           |          |         |          |           |        |

Right click to open Display Settings. Click the filter tab and add a filter to include Items contained in the Häfele Loox LED catalog.

**Display Settings**

General | Sort | Filter

Current Tab  
Title: Lighting

Modes  
 List  Tree

Numbering in List Mode  
 Follow hierarchy  
 Assign new line number

Item Note  
 Display

Assembly Parts  
 Show in Assembly list only  
 Show in Assembly & Part lists

Columns

- Qty
- Pkg.
- Usercode
- Manuf Code
- Description
- Type
- Catalog
- Price
- Specified
- Section Name
- Finished Side

Sections

- Plan
- Non Plan
- Accessories\_Extra Costs
- Option
- +  Countertops\_trims
- CALCULATED ITEMS

In the General Tab, **check** the following boxes:

**UNDER COLUMNS**

- ✓ Qty.
- ✓ Manuf. Code
- ✓ Description
- ✓ Type
- ✓ Catalog
- ✓ Price
- ✓ Section Name

**UNDER SECTIONS**

- ✓ Plan
- ✓ Accessories, Extra Costs
- ✓ Prices

# CREATING LIGHTING QUOTES

- Use the 2020 Report Manager to create a quote. This is the information you will need for ordering the lighting
- Make sure to set Nomenclature to include Manufacturer Codes & Descriptions  
The Manufacturer Code is the 8 digit Item Number used for ordering Häfele products  
The Description includes the Wattage for each of the products
- Prices shown for Loox products in 2020 are the Suggested Retail Price

| CATALOG HAF_LED_1            |     |                    |  |                 |
|------------------------------|-----|--------------------|--|-----------------|
| Supplier                     |     | Hafele America Co. |  |                 |
| #                            | Qty | Manuf. code        | Description  |                 |
| <b>Cabinets</b>              |     |                    |  |                 |
| 1                            | 3   | 833.73.588         | Loox Interior Base Cabinet Light Kit-2 Door - 9.2W | 198.00          |
| 2                            | 2   | 833.73.580         | Loox Drawer Light Kit-Top-2.9W                     | 106.00          |
| 3                            | 1   | 833.73.580         | Loox Drawer Light Kit-Top-2.9W                     | 53.00           |
| 4                            | 1   | 833.73.580         | Loox Drawer Light Kit-2nd-2.9W                     | 53.00           |
| 5                            | 1   | 833.73.580         | Loox Drawer Light Kit-3rd-2.9W                     | 53.00           |
| 6                            | 1   | 833.73.580         | Loox Drawer Light Kit-Top-2.9W                     | 53.00           |
| 7                            | 1   | 833.73.589         | Loox Interior Base Cabinet Light Kit-1 Door - 9.2W | 60.00           |
| 8                            | 1   | 833.73.588         | Loox Interior Base Cabinet Light Kit-2 Door - 9.2W | 66.00           |
| 9                            | 2   | 833.71.225         | Loox Light Strip - 30" - 6.8W                      | 114.00          |
| 10                           | 5   | 833.72.251         | Loox Round Puck Light - 3.8W                       | 260.00          |
| 11                           | 3   | 833.72.252         | Loox Square Puck Light - 3.8W                      | 156.00          |
| 12                           | 1   | 833.72.251         | Loox Round Puck Light - 3.8W                       | 52.00           |
| 13                           | 1   | 833.71.213         | Loox Light Strip w/Dimmer Switch - 12" - 2.4W      | 49.00           |
| 14                           | 1   | 833.73.589         | Loox Interior Wall Cabinet Light Kit-1 Door - 9.2W | 60.00           |
| 15                           | 1   | 833.73.543         | Loox Light Strip - 33" - 7.6W                      | 60.00           |
| 16                           | 1   | 833.73.534         | Loox Light Strip w/Dimmer Switch - 15" - 3.2W      | 52.00           |
| 17                           | 1   | 833.73.589         | Loox Interior Wall Cabinet Light Kit-1 Door - 9.2W | 60.00           |
| 18                           | 2   | 833.73.539         | Loox Light Strip - 21" - 4.6W                      | 96.00           |
| 19                           | 1   | 833.73.589         | Loox Interior Wall Cabinet Light Kit-1 Door - 9.2W | 60.00           |
| <b>Cabinets net total</b>    |     |                    |  | <u>1,661.00</u> |
| <b>Accessories</b>           |     |                    |  |                 |
| *20                          | 6   | 833.74.913         | Loox 60W 12V LED Driver                            | 432.00          |
| <b>Accessories net total</b> |     |                    |  | <u>432.00</u>   |
| <b>HAF_LED_1 Net Total</b>   |     |                    |  | <u>2,093.00</u> |



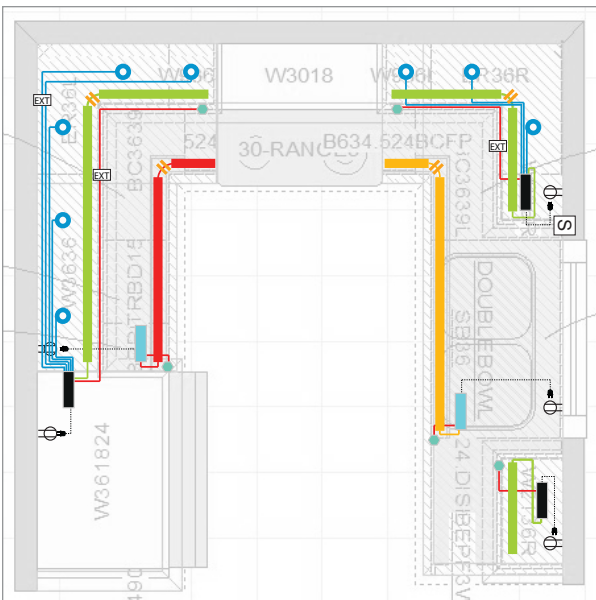
# PLACING ORDERS WITH HÄFELE



The 2020 Lighting Quote has all the information needed to order the Loox components. Placing orders with Häfele is easy and convenient, and can be done online, by phone, or by email.

Online and Live Chat: [www.hafele.com/us](http://www.hafele.com/us)  
Phone: **800.423.3531**  
E-mail: [sales@hafele.us](mailto:sales@hafele.us)

# HÄFELE'S LED LIGHTING DESIGN SERVICE



If you have questions about your design, our lighting design professionals can help you create a complimentary customized lighting plan and price quote for your project.

**For more information, call one of our Lighting Specialists at 1.888.437.7477 or email us at [projects@hafele.us](mailto:projects@hafele.us).**

**HÄFELE**

**Häfele America Co.** | 3901 Cheyenne Drive | P.O. Box 4000 | Archdale, NC 27263  
**Phone:** 800 423 3531 | **Fax:** 800 325 6197 | **Showroom:** New York

[www.hafele.com](http://www.hafele.com)

Copyright 2016 Häfele America Co.