

LTI Visions Planning & Décor

Featuring East High School



VISIONS

LTI is one of the country's leading manufacturers of custom foodservice equipment. Not only do we build the finest products in the industry, but we're also a full-service provider of design services. Through LTI's Visions Planning and Décor, our in-house team can design a concept that totally transforms the look, feel and functionality of your space.

LTI, INC.
9192 Tara Boulevard
Jonesboro, GA 30237

P 770 478 8803
T 888 584 2722

info@lowtempind.com
lowtempind.com/visions

If your cafeteria is in need of a spruce up or a complete renovation, our experienced team can talk you through your options. As you'll see in this booklet, we have solutions ranging from very simple serving lines to custom serverys with all the bells and whistles - and everything in between.

Let our experts guide you through the entire Visions process:

- Our team will meet with you and show samples of work to get your imagination flowing.
- We'll take pictures of your space, start designing and present you with options.
- Once our concept meets your needs and goals, we'll begin the manufacturing and installation process.



VISIONS™

East High School

WHAT WE DID

This was a very old school built in the 1920s and in need of renovation. It was a challenging project to bring it up to date with lots of columns and obstacles to design around. We used spirited paint colors, motivational words, laser cut graphics for counter fronts, window treatments, and chair railing to totally rejuvenate the dining area. We installed this project over the weekend.

MUSTANGS



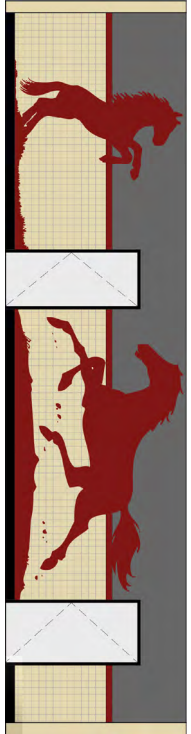
East High School - Memphis, Tennessee



CAFETERIA SOUTH WALL



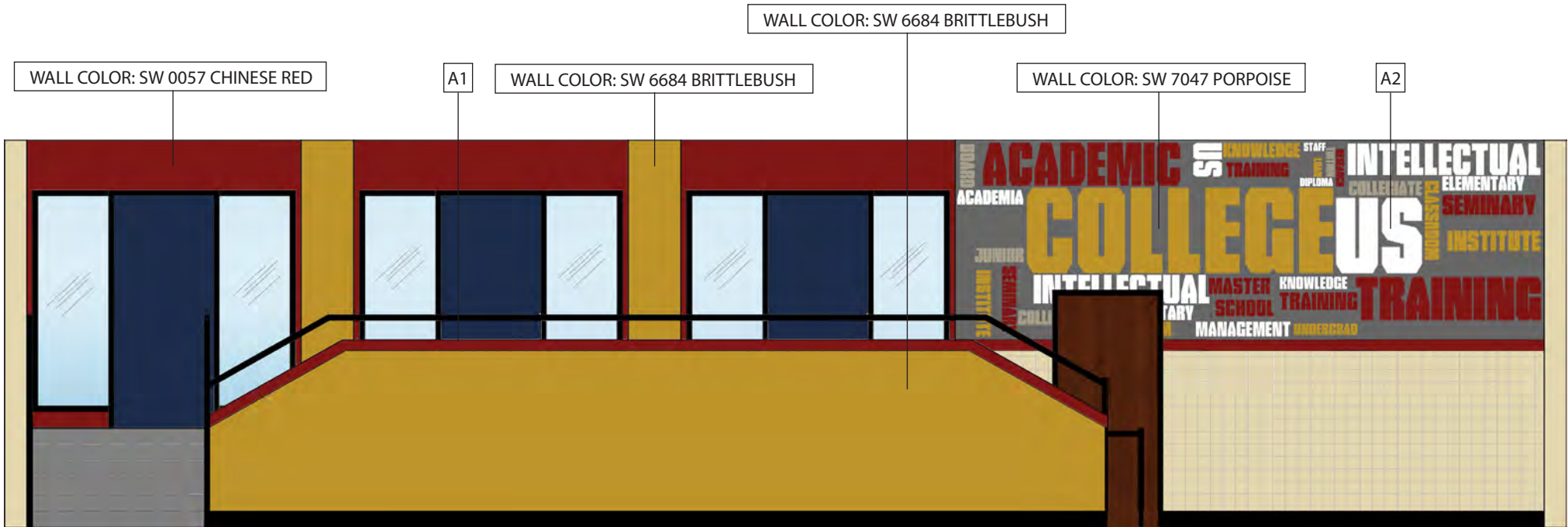
CAFETERIA EAST WALL



CAFETERIA WEST WALL

CAFETERIA NORTH WALL





A1: Border Graphic Print
A2: 72" x 212" Inspirational Word Graphic Print

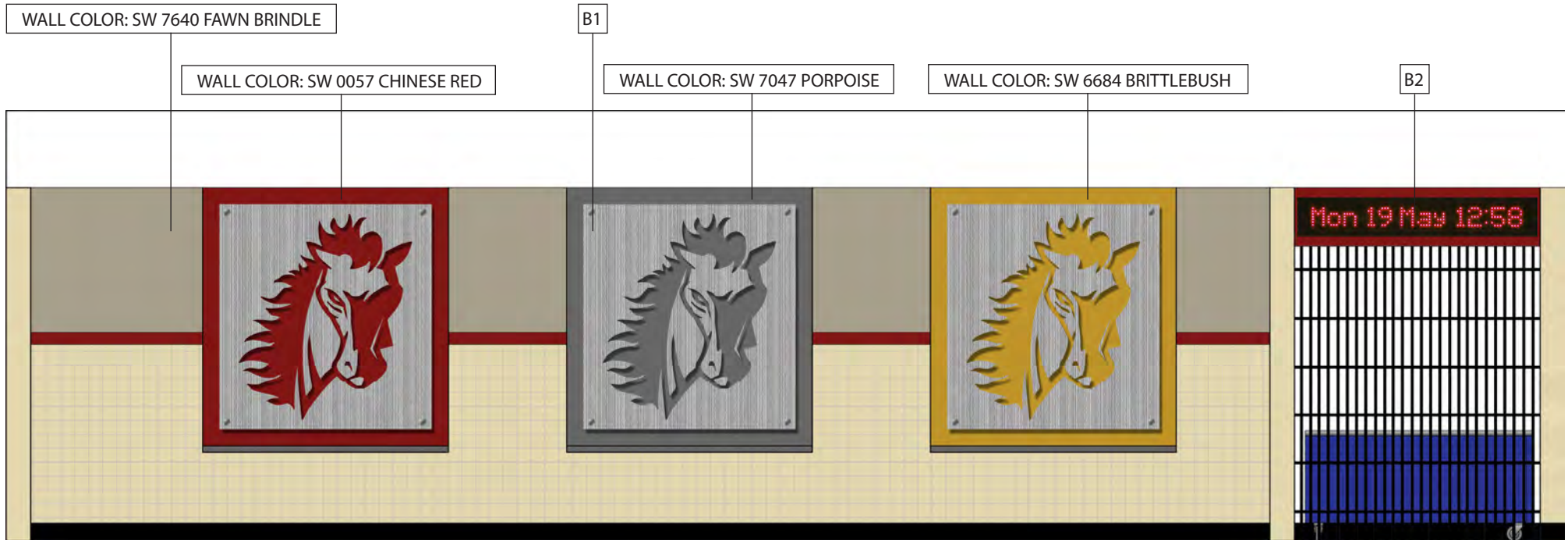
All wall paint to be supplied by Sherwin Williams.
Measurements of facility shall be field verified prior to fabrication.

NORTH WALL A

NORTH WALL B

NORTH WALL C





B1: Laser Cut Textured Stainless Steel Mustang with 1" Stand Offs
B2: Scrolling marquee has 4" high scrolling letters, with Ethernet input options. Sized 76"W x 7.75"H.

All wall paint to be supplied by Sherwin Williams.
Measurements of facility shall be field verified prior to fabrication.

B1

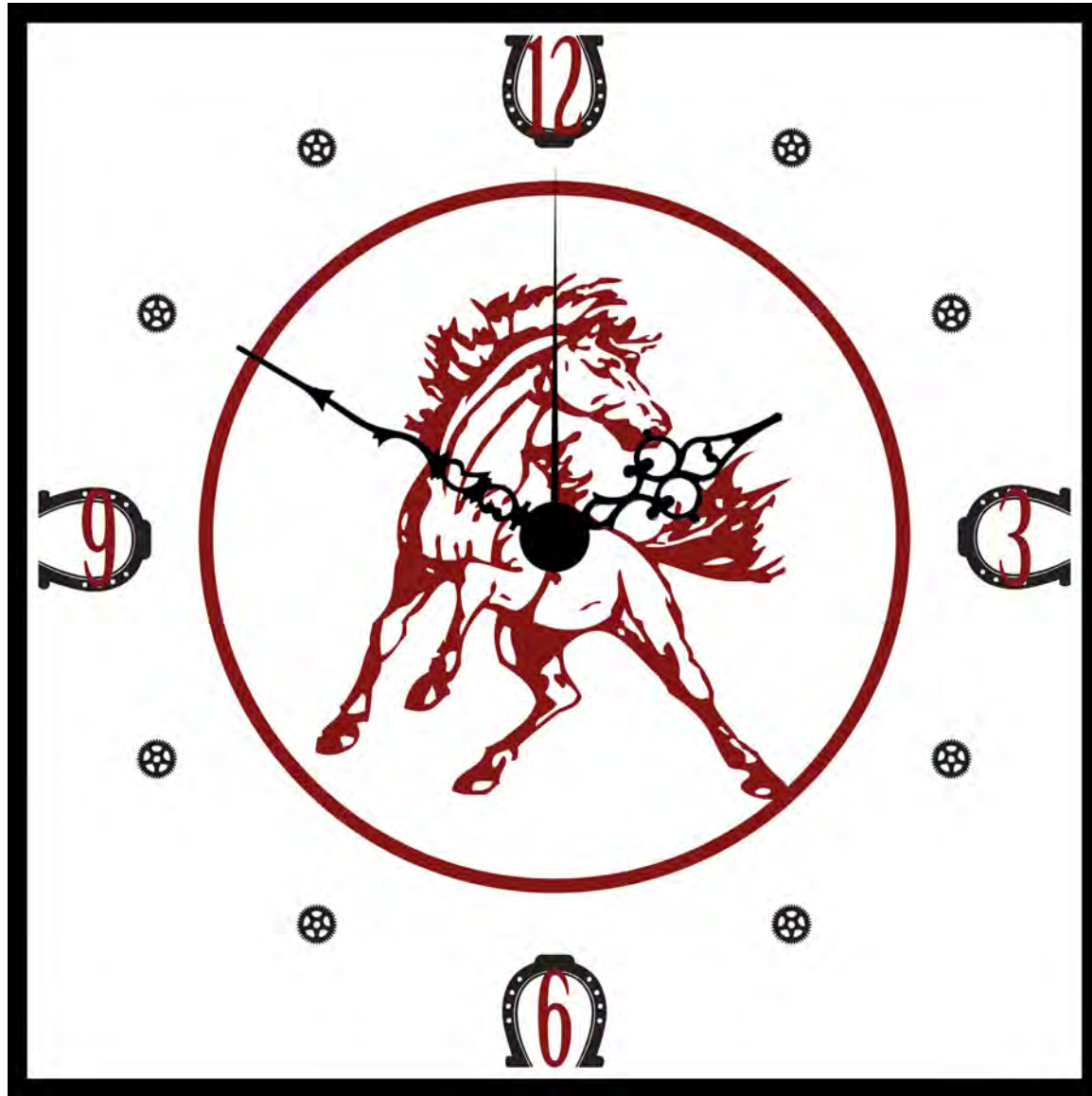


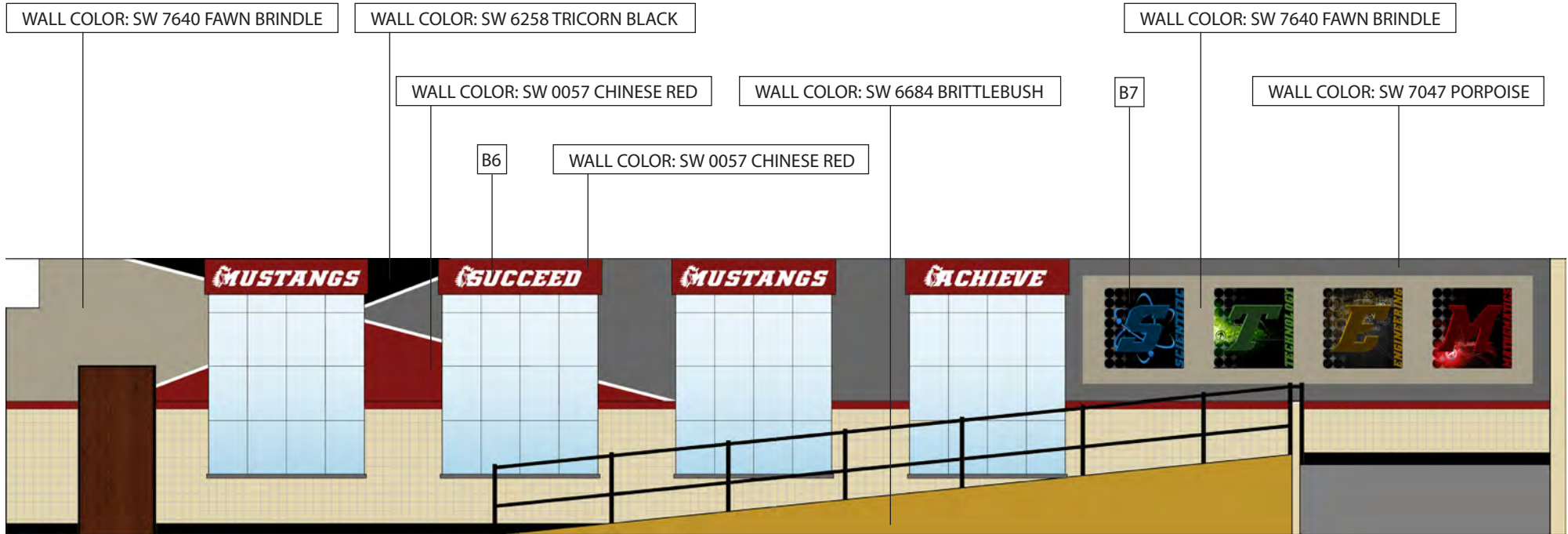


B3: Custom Mustang Clock
B4: Vinyl Graphic Applied to the Second Surface

All wall paint to be supplied by Sherwin Williams.
Measurements of facility shall be field verified prior to fabrication.

B3





B6: 1" Square Tubing with Renobond Backing and Digital Print Graphics
B7: 36" x 36" Graphic Prints with 1" Stand Offs. Cup Lights can be added to Illuminate Graphics

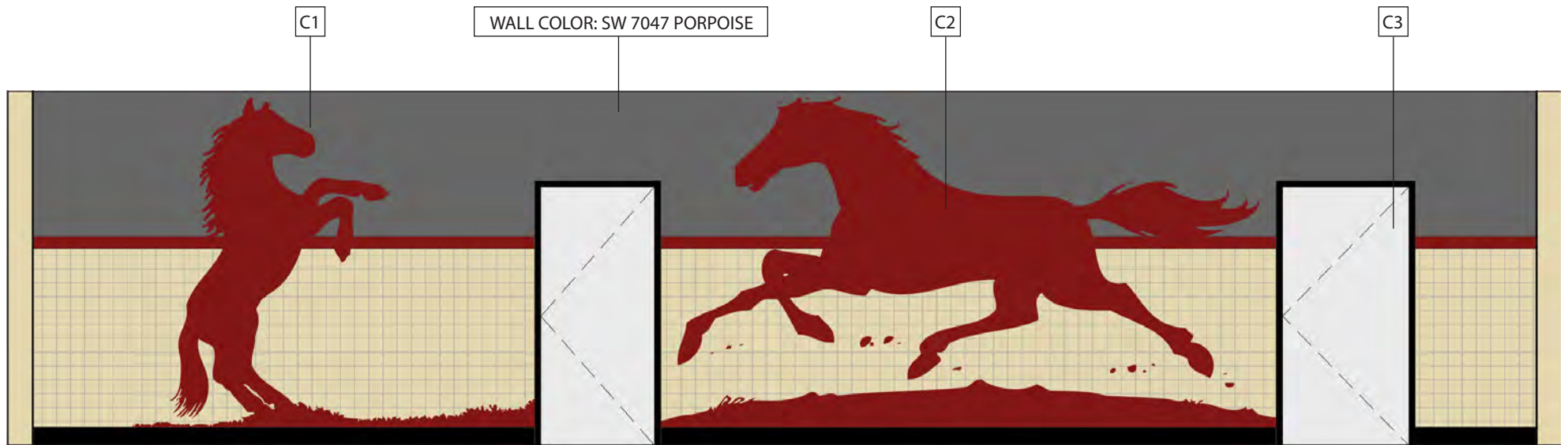
All wall paint to be supplied by Sherwin Williams.
Measurements of facility shall be field verified prior to fabrication.

B6



B7



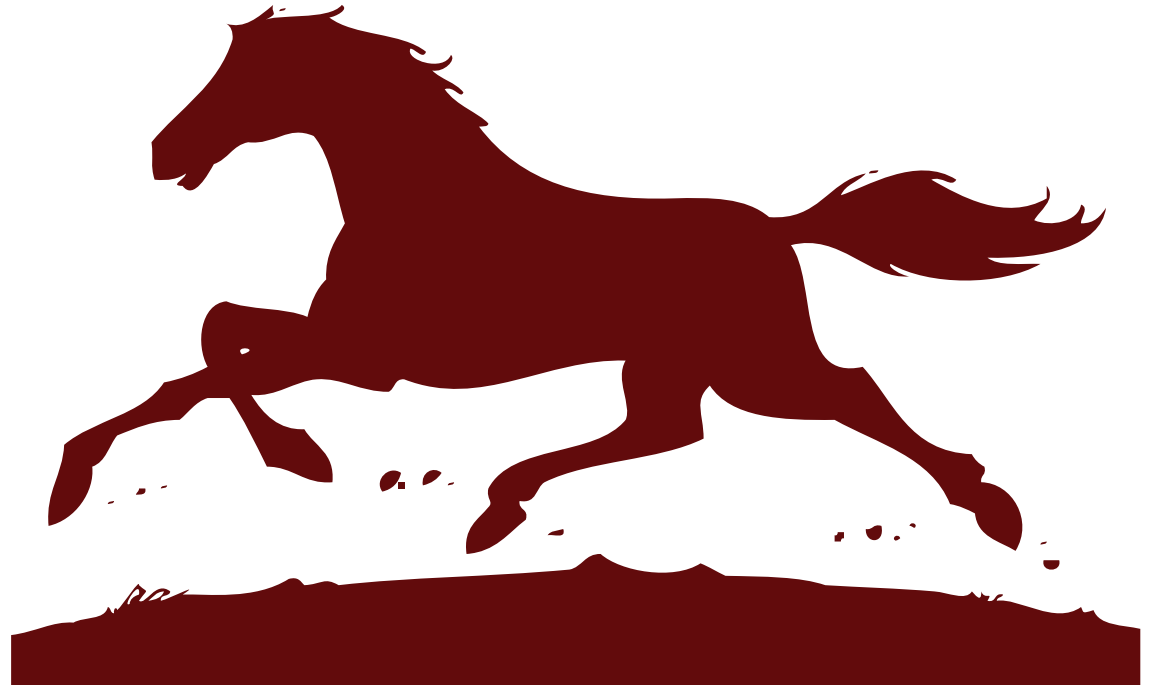
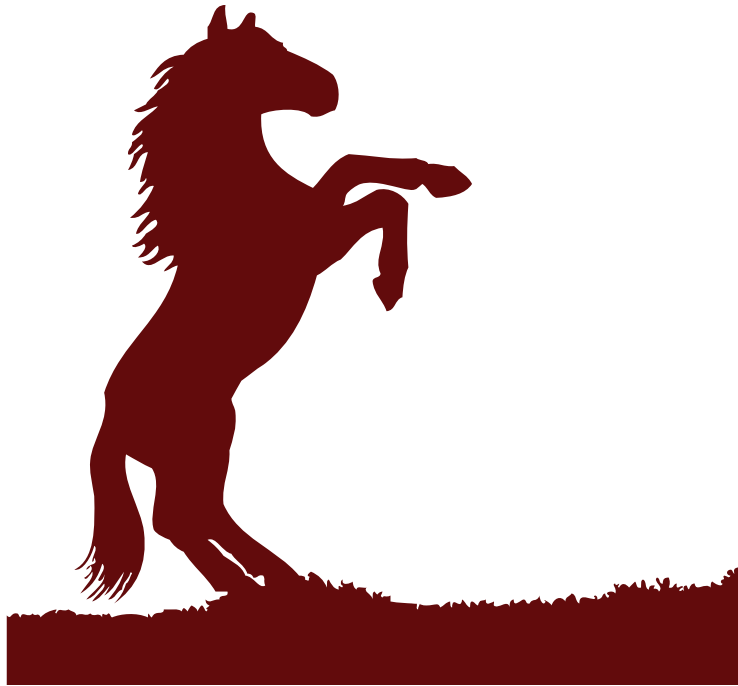


C1: 109" x 129" Mustang Graphic Print with 6mm PVC Backing
C2: 109" x 195" Mustang Graphic Print with 6mm PVC Backing
C3: Border Graphic Print

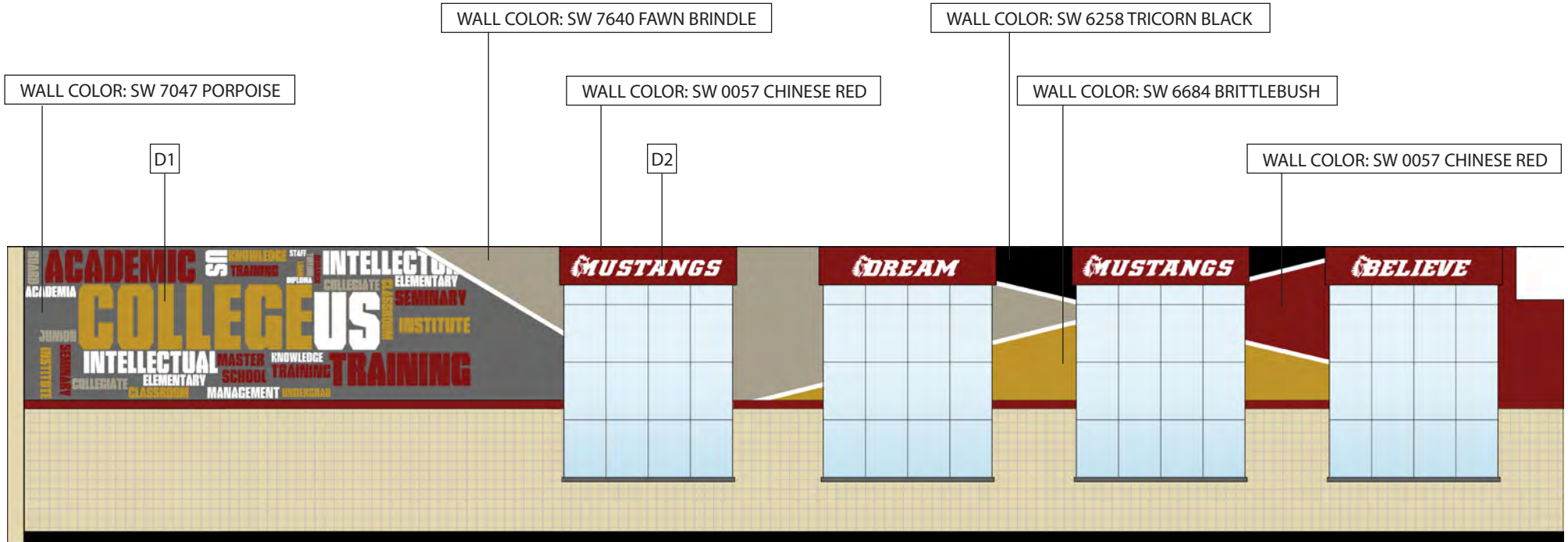
All wall paint to be supplied by Sherwin Williams.
Measurements of facility shall be field verified prior to fabrication.

C1

C2







D1: 72" x 212" Inspirational Word Graphic Print
D2: 1" Square Tubing with Renobond Backing and Digital Print Graphics

All wall paint to be supplied by Sherwin Williams.
Measurements of facility shall be field verified prior to fabrication.

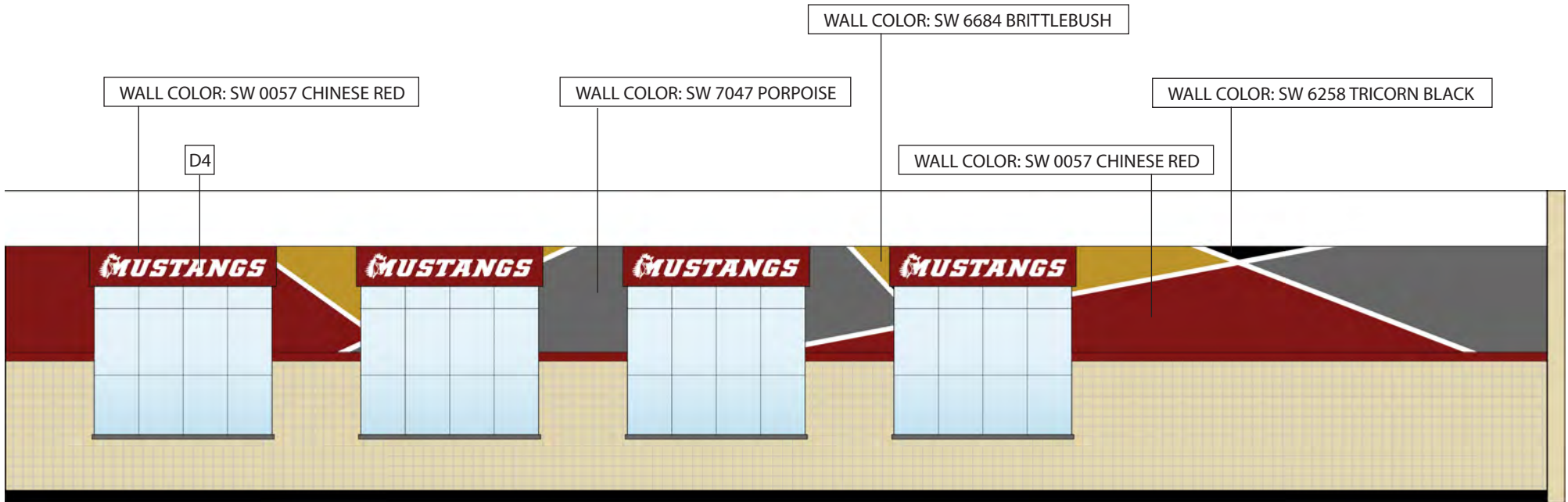


D3: 33" x 33" Vinyl Graphic Applied to Second Surface

All wall paint to be supplied by Sherwin Williams.
Measurements of facility shall be field verified prior to fabrication.

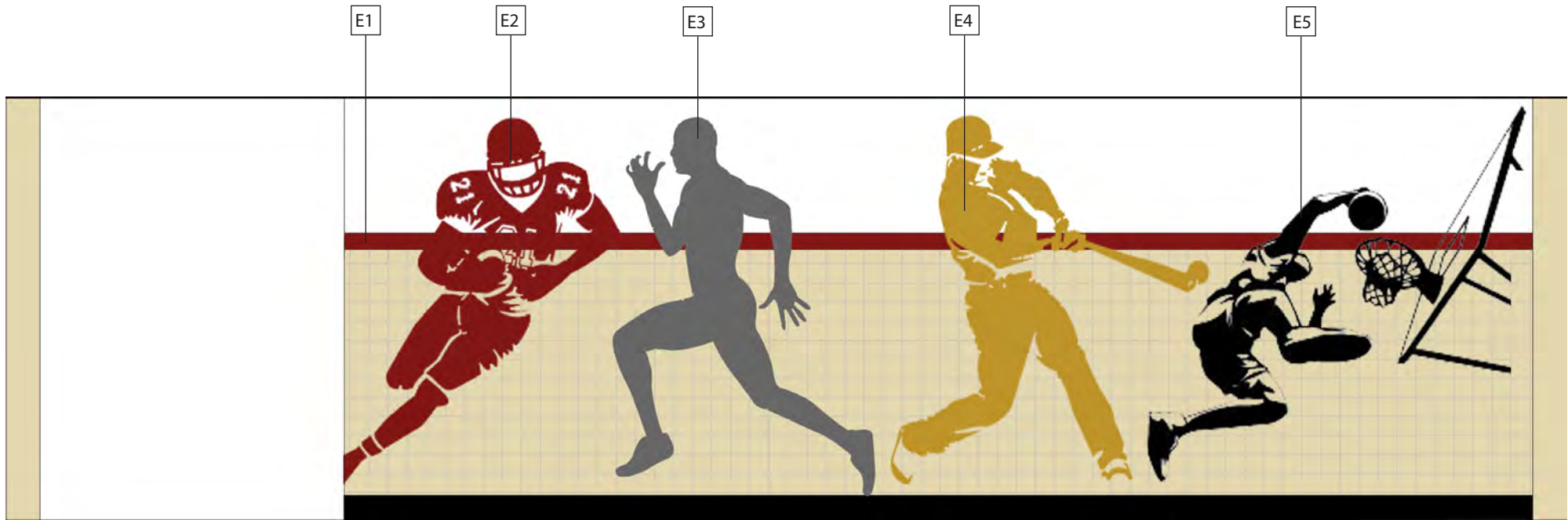
D3





D4: 1" Square Tubing with Renobond Backing and Digital Print Graphics

All wall paint to be supplied by Sherwin Williams.
Measurements of facility shall be field verified prior to fabrication.



E1: Graphic Print with 6mm PVC Backing

E2: 88" x 68" Graphic Print to Match Paint Color SW 0057 Chinese Red with 6mm PVC Backing

E3: 88" x 39" Graphic Print to Match Paint Color SW 7047 Porpoise with 6mm PVC Backing

E4: 88" x 78" Graphic Print to Match Color SW 6258 Brittlebush with 6mm PVC Backing

E5: 88" x 62" Graphic Print to Match Color SW 6684 Tricorn Black with 6mm PVC Backing

All wall paint to be supplied by Sherwin Williams.
Measurements of facility shall be field verified prior to fabrication.



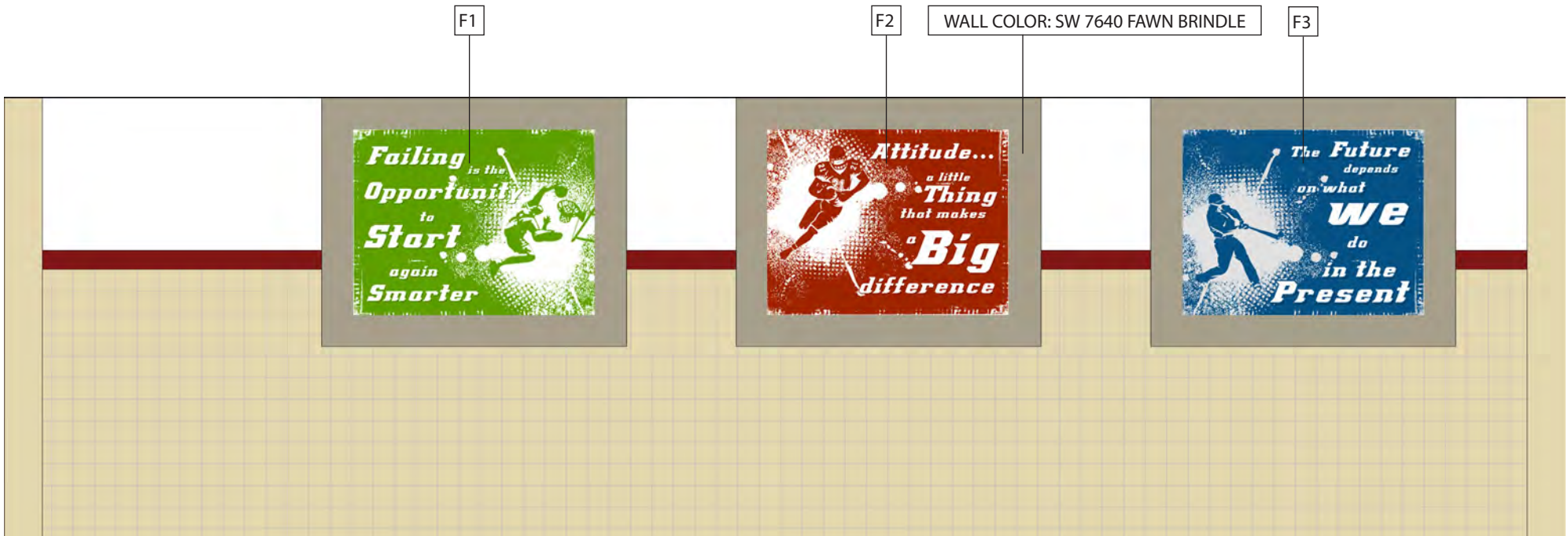
E2

E3

E4

E5





- F1: 40" x 52" Graphic Print with 1" Stand Offs
- F2: 40" x 52" Graphic Print with 1" Stand Offs
- F3: 40" x 52" Graphic Print with 1" Stand Offs

All wall paint to be supplied by Sherwin Williams.
Measurements of facility shall be field verified prior to fabrication.

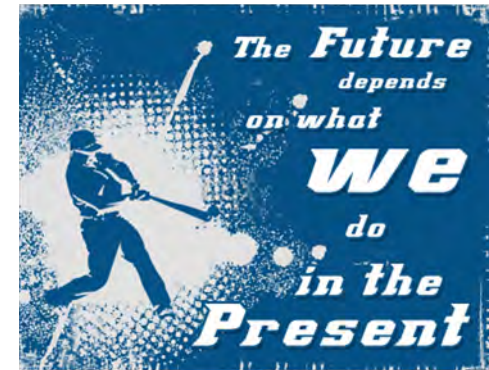
F1

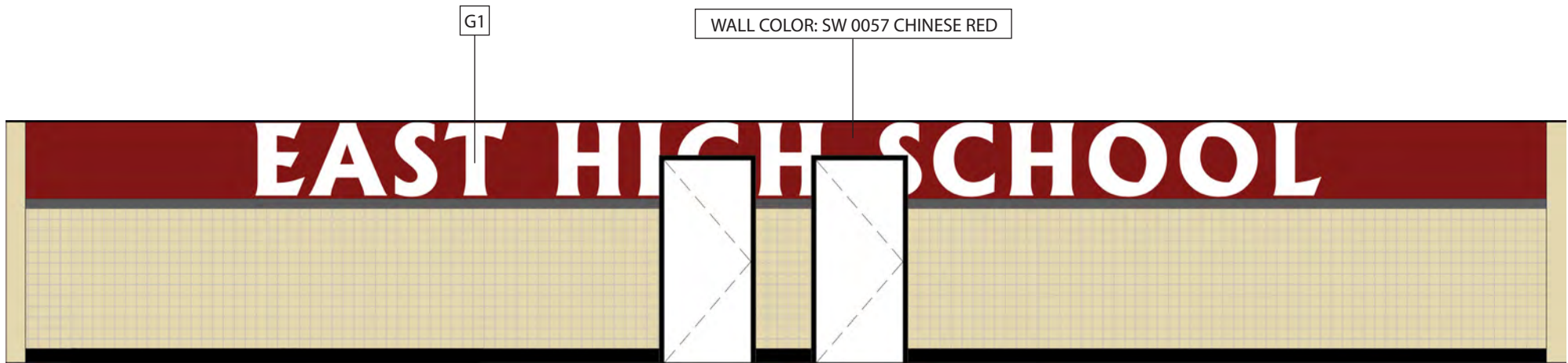


F2



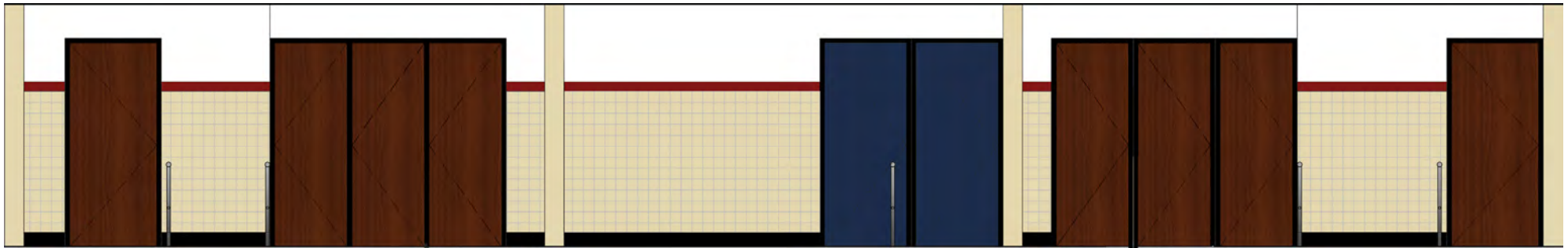
F3





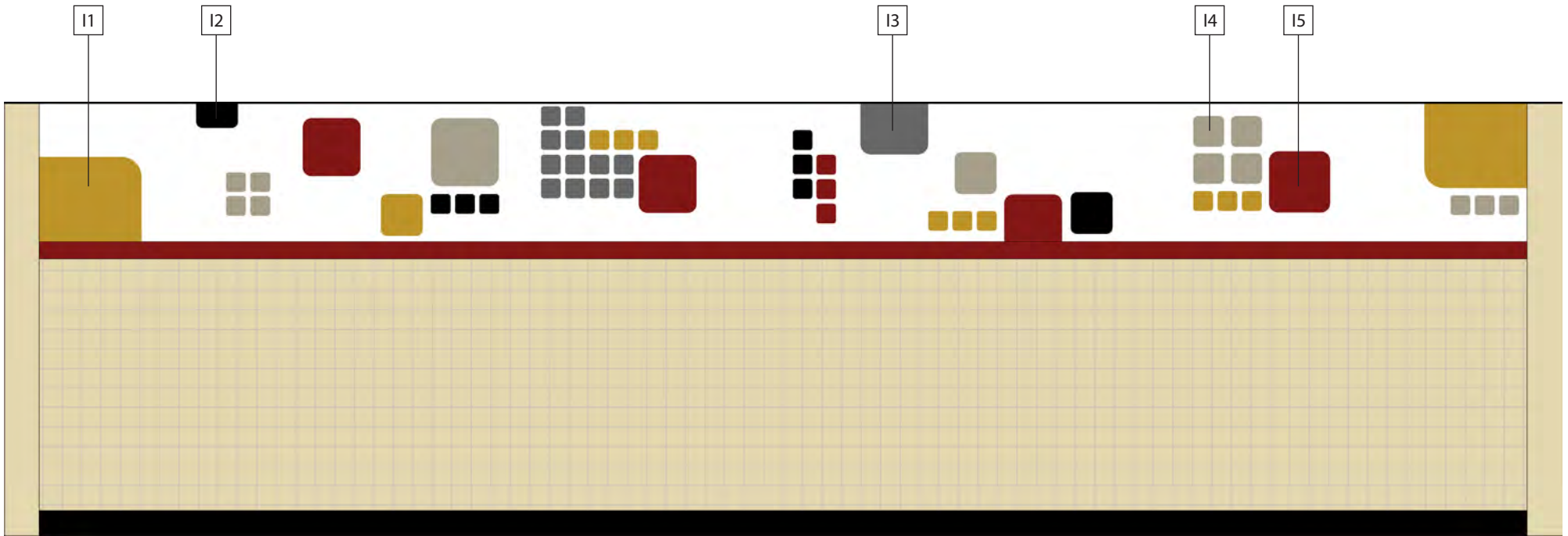
G1: Raised Routed "EAST HIGH SCHOOL" Lettering. Color to Match SW 7004 Snowbound

All wall paint to be supplied by Sherwin Williams.
Measurements of facility shall be field verified prior to fabrication.



Doors to be re-finished to match desired specifications.

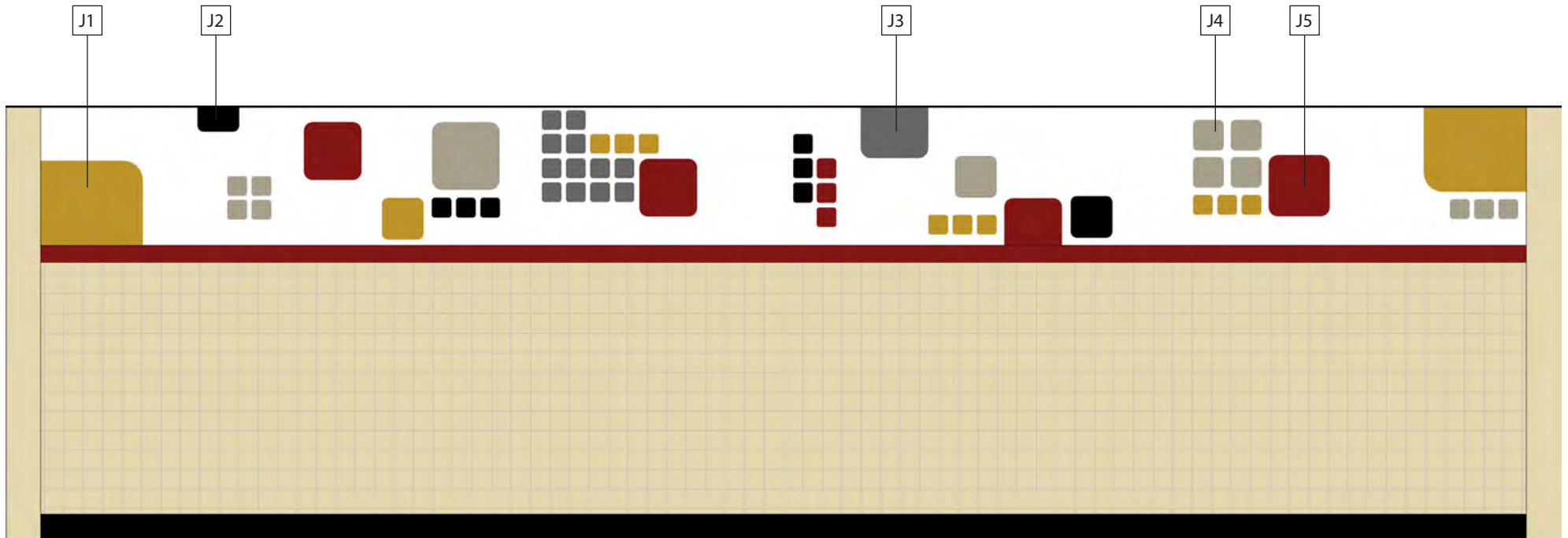
All wall paint to be supplied by Sherwin Williams.
Measurements of facility shall be field verified prior to fabrication.



- I1: Graphic Print to Match Color SW 6684 Brittlebush with 6mm PVC Backing
- I2: Graphic Print to Match Color SW 6258 Tricorn Black with 6mm PVC Backing
- I3: Graphic Print to Match Paint Color SW 7047 Porpoise with 6mm PVC Backing
- I4: Graphic Print to Match Paint Color SW 7640 Fawn Brindle with 6mm PVC Backing
- I5: Graphic Print to Match Paint Color SW 0057 Chinese Red with 6mm PVC Backing

Sizes of the Rounded Square Graphics will Vary

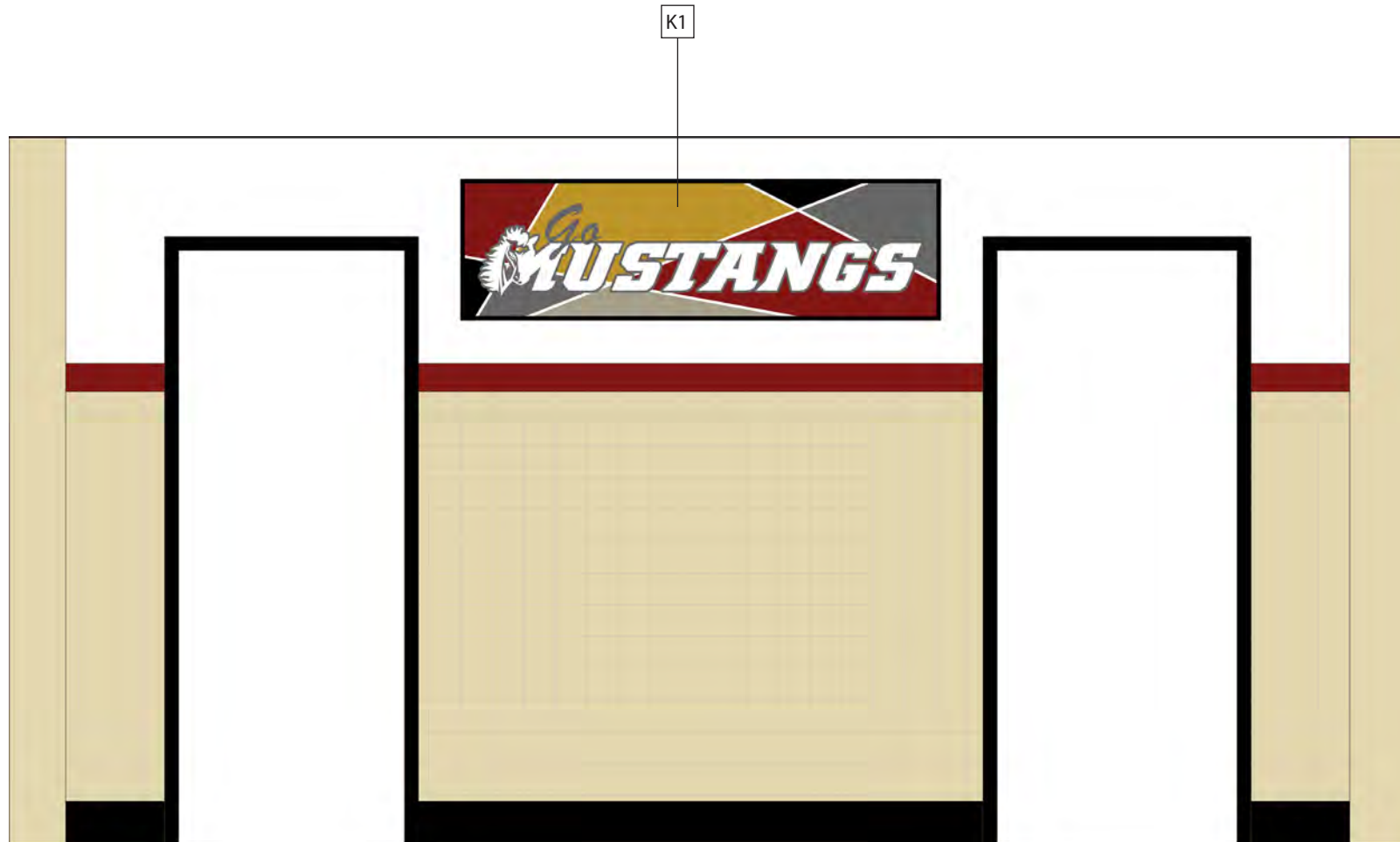
All wall paint to be supplied by Sherwin Williams.
Measurements of facility shall be field verified prior to fabrication.



- J1: Graphic Print to Match Color SW 6684 Brittlebush with 6mm PVC Backing
- J2: Graphic Print to Match Color SW 6258 Tricorn Black with 6mm PVC Backing
- J3: Graphic Print to Match Paint Color SW 7047 Porpoise with 6mm PVC Backing
- J4: Graphic Print to Match Paint Color SW 7640 Fawn Brindle with 6mm PVC Backing
- J5: Graphic Print to Match Paint Color SW 0057 Chinese Red with 6mm PVC Backing

Sizes of the Rounded Square Graphics will Vary

All wall paint to be supplied by Sherwin Williams.
Measurements of facility shall be field verified prior to fabrication.

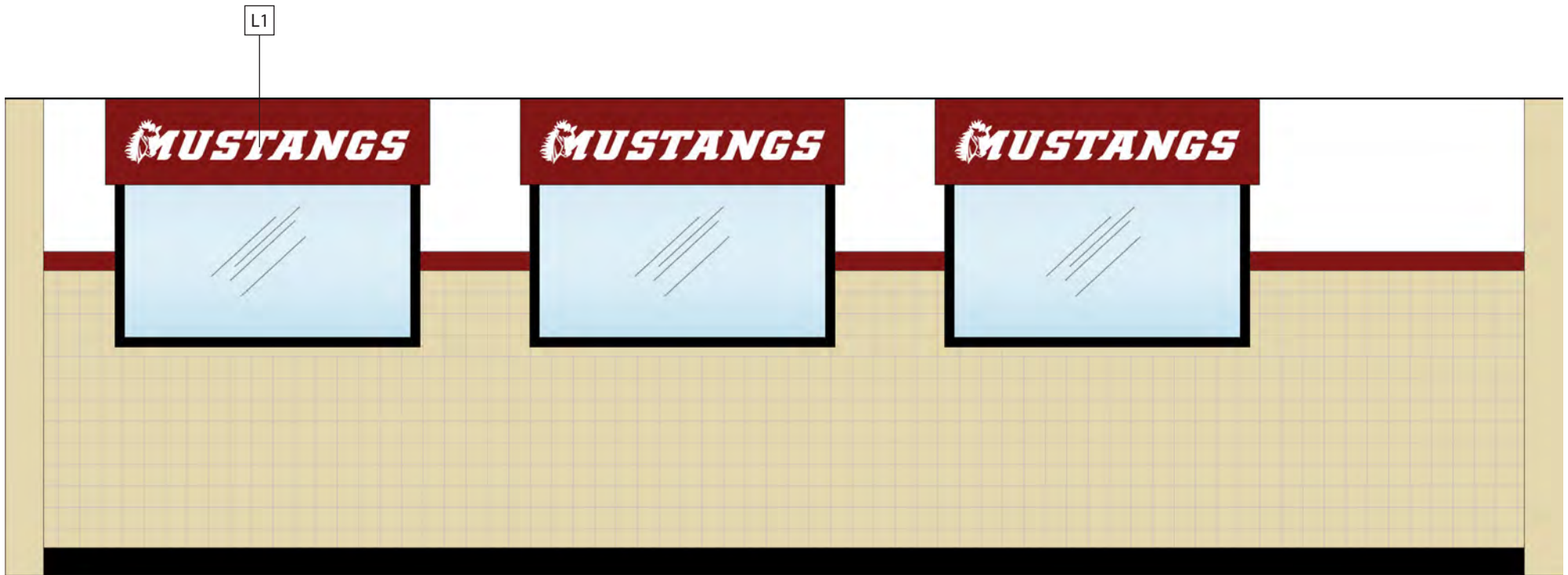


K1: Graphic Print with 1" Stand Offs

All wall paint to be supplied by Sherwin Williams.
Measurements of facility shall be field verified prior to fabrication.

K2



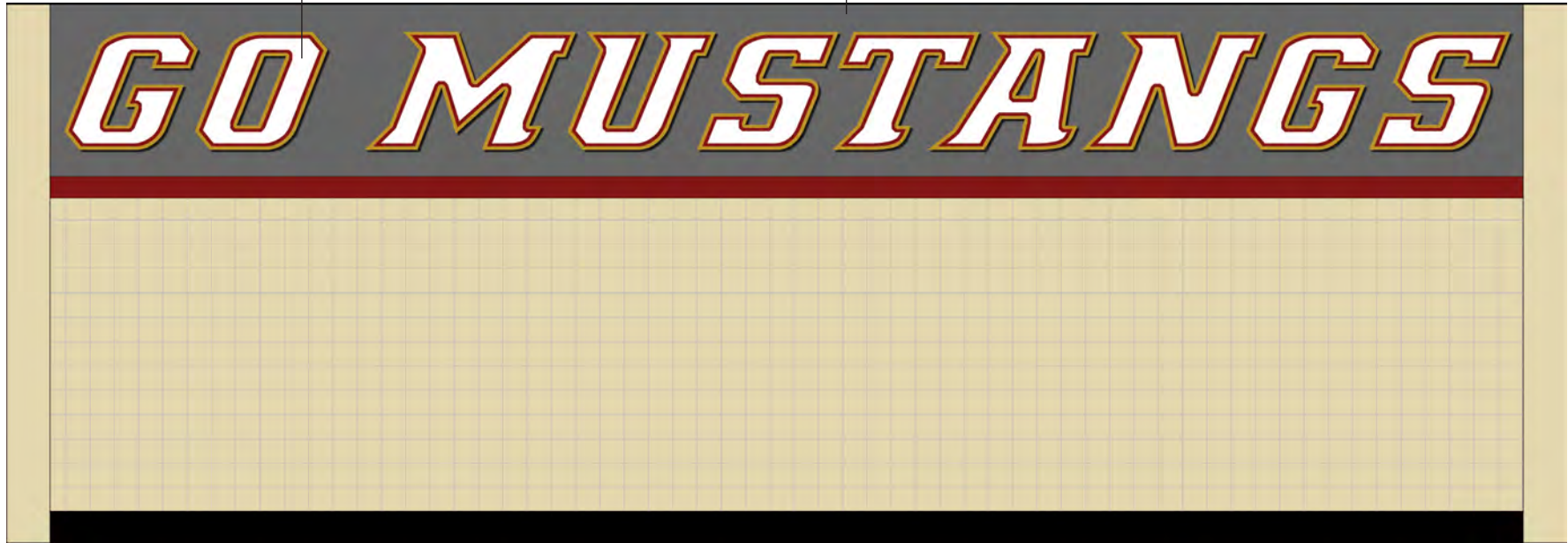


L1: 1" Square Tubing with Renobond Backing and Digital Print Graphics

All wall paint to be supplied by Sherwin Williams.
Measurements of facility shall be field verified prior to fabrication.

M1

WALL COLOR: SW 7047 PORPOISE



M1: 1" Graphic Print with 6mm PVC Backing

All wall paint to be supplied by Sherwin Williams.
Measurements of facility shall be field verified prior to fabrication.



Contact LTI for a Visions makeover,
and we'll start on a design that will engage
your audience and sustain excitement day
in and day out.

LTI, INC.

9192 Tara Boulevard
Jonesboro, GA 30237

P 770 478 8803

T 888 584 2722

info@lowtempind.com
lowtempind.com/visions