

BAXI

LUNA3 COMFORT



Gas wall hung boilers

BAXI

BAXI

Third-generation technology: never simpler!



**Now comfort right
at your fingertips!**

Luna3 Comfort, the new Baxi range of wall hung boilers, has been developed with an innovative remote control panel, included with the boiler, that enables an immediate programming and boiler's diagnostics.

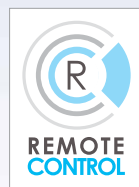
LUNA3 COMFORT ★★ ★

THE WORLD OF COMFORT HAS SIGNIFICANTLY CHANGED

Cutting-edge electronics, maximum comfort, high performance are the major benefits of the compact and smart designed **Luna3 Comfort**.

3 stars of energetic efficiency certify the fanned flue models according to the 92/42/CEE.

Luna3 Comfort is provided with a remote control panel (wire connection) and is available in 6 models: heating only and domestic hot water production, fanned and open flue versions with an output range up to 31 kW.



LUNA3 COMFORT

240 Fi, combi, fanned flue	25 kW	★★★	III'	☎
310 Fi, combi, fanned flue	31 kW	★★★	III'	☎
240 i, combi, open flue	24 kW	★★	III'	☎
1.240 Fi, heating only, fanned flue	25 kW	★★★	III'	
1.310 Fi, heating only, fanned flue	31 kW	★★★	III'	
1.240 i, heating only, open flue	24 kW	★★	III'	

Luna3 Comfort is supplied with remote control panel-wire connection

BAXI

BAXI

Maximum
domestic comfort



LUNA3 COMFORT ★★

HOT WATER AND COMFORT ALWAYS AVAILABLE

Luna3 Comfort ensures a total comfort: high amounts of hot sanitary water at a constant temperature always at your disposal, (18l/min $\Delta T 25^{\circ}\text{C}$ -for 310 Fi models); also in case of simultaneous hot water demand (i.e. shower plus washbasin) or variations in the demanded quantity, the water keeps the temperature without any fluctuation. Besides, the control panel enables to set the pre-heating function on the primary circuit in order to reduce waiting times.



REMOVABLE AND REMOTE CONTROL PANEL

Baxi has developed Luna3 Comfort with a new remote control panel that enables you to easily interact with the boiler: sanitary and heating temperatures can be set directly on the remote control. In the wide LCD display all the information on boiler's working is easily and clearly showed. The control panel works also as room thermostat and is provided with a 2 levels weekly timer.



ENERGETIC EFFICIENCY AND SAVING

Baxi has developed an enhanced heat exchanger ensuring high energetic efficiency. Luna3 Comfort fanned flue models have obtained the 3 stars energetic efficiency according to the European 92/42/CEE. Higher efficiency ensures lower consumptions and a lower annual gas expenditures.



BAXI

BAXI

The maximum comfort under your control

Baxi has developed a brand-new remote control panel that allows an easy setting and an immediate diagnostics of the boiler with the recording of the latest anomalies. The interaction with the boiler is easier thanks to the information clearly displayed in the wide LCD and dedicated push-buttons for the temperature regulation.



REMOTE CONTROL

REMOTE CONTROL



The specifications are meant for normal operation of the control of the remote control. The push-buttons have different functions depending on operation and programming mode.

LUNA3 COMFORT ★★★

REMOTE CONTROL PANEL: IMMEDIATE SELF-CHECK

Luna3 Comfort is provided with a removable control panel (wire connection) to guarantee the remote managing of the boiler. In the wide LCD display all the information on the boiler's working is showed. The regulations are done directly on the remote control. The electronics enables the installation in low and high temperature systems. The control panel has the dimensions to be fitted in a standard built-in mounting box of the light switches.

MAIN FUNCTIONS

- All boiler's parameters setting and display:
 - room temperature, heating flow, climatic curve and DHW temperature setting
 - heating and DHW (with indirect cylinder) working timer
 - room temperature display
 - heating and DHW set temperature display
 - outdoor temperature display (if the outdoor sensor is connected available as option)
 - heating and DHW real temperature, level of modulation and output display
- Self-check and recording of the latest anomalies
- Built-in weather compensation function. When the external sensor is connected (available as option), the electronics selects automatically the more suitable climatic curve, adapting the heating flow temperature according to the external temperature and room temperature
- 2 levels weekly timer (comfort/economy): the boilers' functioning settings can be done for single days or for groups of days
- Simultaneous code/symbol display for an easy understanding of the boiler's working
- Shower function: the temperature of DHW for a shower can be temporary changed and adjusted to the desired level pushing the dedicated button
- Comfort/economy button: when the heating programming is set on automatic, you can temporary change the set temperature in a period of time
- Central heating function selection: automatic/ manual /off
- Temporary central heating function selection: possible forcing of the programs for temporary functioning (i.e. holiday, presence setting)

BAXI

High performance

Baxi has developed an **enhanced** heat exchanger: it is made of copper and has a wider exchange surface to increase the boiler's efficiency. Thanks to this exchanger, Luna3 Comfort is distinguished by high performances in the DHW production: 18 lt/min for 310 Fi models and 14,3 lt/min for the 240 Fi ($\Delta T=25^{\circ}\text{C}$)



LUNA3 COMFORT ★★



3 STARS ENERGETIC EFFICIENCY

Luna3 Comfort fanned flue models have obtained the 3 stars energetic efficiency according to the European 92/42/CEE.



OUTDOOR SENSOR

Luna3 Comfort has a built-in weather compensation function (outdoor sensor available as option) to adjust the heating flow temperature according to the external temperature.



NEW HYDRAULIC GROUP

Luna3 Comfort is provided with a new hydraulic group with built-in electric 3 way valve. Thanks to the flowmeter with turbine, the sanitary water flow is detected and gauged. The pre-heating function can be selected as well: after any hot water demand, the boiler keeps the primary circuit in temperature so that the following hot water demands will have the desired temperature immediately. This function will deactivate automatically after 60' of no water demands to contain energy consumption.



LOW AND HIGH TEMPERATURE SYSTEMS

The electronics of Luna3 Comfort enables to manage also low temperature systems. For mixed systems you can use the Baxi Mixed Heating System Kit available as option.



BAXI AFR SYSTEM

The Air Flow Regulation (AFR) system, patented by Baxi, allows the efficiency optimization thanks to a perfect inlet air regulation. The air in excess can be regulated according to the ducts total length. Baxi AFR system is supplied as option for fanned flue models and dual flue system.



CONNECTION TO SOLAR SYSTEMS

Combi models are designed to be easily connected to Baxi integrated solar systems. The sophisticated electronics of Luna3 Comfort has been developed to enable the switching on of the boiler just in case the temperature of the solar cylinder is lower then the required one.

BAXI

BAXI

Technical features

Quality and reliability of Baxi range of boilers, have always been guaranteed by a careful choice of each component. Their positioning has been thought to make them easily reachable, making the service easier.

Luna3 Comfort is provided with all regulation and control systems to ensure the maximum comfort and safety:

- Electronic continuous flame modulation
- Automatic gradual ignition and control by flame modulation
- Electronic temperatures control by NTC sensors
- Overheat limit thermostat for the primary exchanger
- Hydraulic pressure switch to prevent boiler's operating in event of low water
- Pressure switch to ensure safe discharge of flue products (fanned flue models)
- Flue thermostat to ensure safe discharge of flue products (open flue models)
- Post circulation of the pump in central heating and sanitary modes
- 3 bar pressure relief valve
- Manometer of the central heating to check the system pressure
- Grade of protection: IPX5D



ONLY HEATING VERSIONS
THE NEW HYDRAULIC GROUP IS DESIGNED FOR AN EASY CONNECTION TO AN INDIRECT CYLINDER. THE BOILER CONTROLS ELECTRONICALLY THE TEMPERATURE OF THE WATER IN THE CYLINDER

FAN
POST-VENTILATION FUNCTION TO REDUCE THE WAITING TIME OF THE RESTARTINGS (FANNED FLUE MODELS)



PRIMARY EXCHANGER
MADE OF COPPER PIPES PROTECTED WITH ANTICORROSION COATING



BURNER AND FLAME SENSING DEVICE
STEEL BURNER AND FLAME SENSING DEVICE TO ENSURE SAFETY IN CASE OF LACK OF GAS



3 WAY ELECTRIC VALVE
WITH ELECTRIC FULL ANTI-FROST AND ANTI-BLOCK DEVICE



SANITARY PLATE EXCHANGER
MADE OF STAINLESS STEEL TO ENSURE THE MAXIMUM HEAT EXCHANGE (COMBI MODELS)



LUNA 3 COMFORT ★★★



GAS VALVE
WITH DOUBLE SAFETY
SOLEINOID AND
CONTINUOUS
MODULATING DEVICE
WORKING IN HEATING
AND DHW SYSTEM



**SANITARY
FLOWMETER**
WITH TURBINE FOR A
PERFECT MODULATION
OF THE OUTPUT
ACCORDING TO THE
DHW DEMAND



PUMP >>> Low Energy
LOW ENERGETIC
CONSUMPTION WITH
AN ELECTRONIC ANTI-
BLOCK DEVICE



**AUTOMATIC
BY-PASS**
TO GRANT THE RIGHT
FUNCTIONING OF THE
BOILER IN ANY TYPE OF
INSTALLATION



BAXI

BAXI

Technical chart



		COMBI			HEATING ONLY		
		FANNED FLUE		OPEN FLUE	FANNED FLUE		OPEN FLUE
		LUNA3 COMFORT 240 Fi	LUNA3 COMFORT 310 Fi	LUNA3 COMFORT 240 i	LUNA3 COMFORT 1.240 Fi	LUNA3 COMFORT 1.310 Fi	LUNA3 COMFORT 1.240 i
Maximum heat input (nominal)	kW	26,9	33,3	26,3	26,9	33,3	26,3
Maximum heat output (nominal)	kW	25	31	24	25	31	24
Minimum heat output	kW	9,3	10,4	9,3	9,3	10,4	9,3
Energetic efficiency (92/42/CEE)		★★★	★★★	★★	★★★	★★★	★★
Maximum efficiency (nominal)	%	92,9	93,1	91,2	92,9	93,1	91,2
Efficiency at 30%	%	90,2	90,8	90,29	90,2	90,8	90,29
Minimum working temperature with anti-frost device	°C	-5	-5	-5	-5	-5	-5
Expansion vessel	l/bar	8/0,5	10/0,5	8/0,5	8/0,5	10/0,5	8/0,5
Heating system max pressure	bar	3	3	3	3	3	3
Regulation of water temperature in heating circuit	°C	30/85 30/45	30/85 30/45	30/85 30/45	30/85 30/45	30/85 30/45	30/85 30/45
Regulation of water temperature in DHW circuit	°C	35/60	35/60	35/60	-	-	-
Domestic hot water production ΔT 25°C	l/min	14,3	18	13,7	-	-	-
Minimum capacity DHW flow rate	l/min	2	2	2	-	-	-
Minimum pressure on DHW system	bar	0,15	0,15	0,15	-	-	-
Maximum pressure on DHW system	bar	8	8	8	-	-	-
Flue tube	Ø mm	-	-	120	-	-	120
Coaxial flue system Ø60/100	m	5	4	-	5	4	-
Dual flue system Ø80 max lenght	m	40	25	-	40	25	-
Maximum flue mass flow rate	kg/s	0,017	0,018	0,019	0,017	0,018	0,019
Minimum flue mass flow rate	kg/s	0,017	0,019	0,017	0,017	0,019	0,017
Maximum flue temperature	°C	135	145	110	135	145	110
Minimum flue temperature	°C	100	110	85	100	110	85
Dimension (h x w x d)	mm	760x450x345	760x450x345	760x450x345	760x450x345	760x450x345	760x450x345
Net weight	kg	38	40	33	36	38	31
Gas type		Meth/LPG	Meth/LPG	Meth/LPG	Meth/LPG	Meth/LPG	Meth/LPG
Power consumption	W	135	165	80	135	165	80
Grade of protection		IPX5D	IPX5D	IPX5D	IPX5D	IPX5D	IPX5D

LUNA 3 COMFORT

ACCESSORIES



THERMOREGULATION

OUTDOOR SENSOR
KHG 714062111

If the outdoor sensor is connected, the flow temperature of the heating circuit is adjusted according to the external temperature



INTERFACE PCB FOR ZONE CONTROL
KHG 714106510

The PCB is equipped with 2 relays output and one ON-OFF input.
Programmable for different purposes (i.e. zone control)



HYDRAULIC ACCESSORIES

DHW SENSOR
KHG 714061911

Cylinder sensor for temperature control (immersion installation)



3 WAY VALVE MOTOR
KHG 714106610

Accessory for the connection of the boiler to an indirect cylinder (heating only models)



MIXED HEATING SYSTEM KIT
KFG 714079610

To manage simultaneously a mixed system of a high temperature zone ($\leq 85^{\circ}\text{C}$) and a low temperature zone ($\leq 45^{\circ}\text{C}$). The kit includes:

- water collector
- 2 pumps
- mixing valve
- electronic card

To control a 2nd high temperature zone, you can use the mixed heating system kit for a 3rd zone (KHG 714085110) that includes:

- Grundfos pump UPS 15/60
- no return valve G 3/4 FF
- pipes and wiring



BAXI

Accessories

FLUE ACCESSORIES (AVAILABLE AS OPTION)

COAXIAL FLUE SYSTEM



COAXIAL FLUE TUBES
WITH TERMINAL 60/100

KHG 714101810



VERTICAL CHIMNEY
TERMINAL FOR
COAXIAL FLUE SYSTEM

KHG 714036410



COAXIAL FLUE TUBE
EXTENSION 60/100

L=1000 KHG 714101710
L=500 KHG 714103910



FLAT/PITCHED ROOF
TILE

flat KHG 714036710
pitched KHG 714036610



STARTING BOILER
COAXIAL 90° BEND

KHG 714101410



COAXIAL 90° BEND

KHG 714101510



ADAPTER FOR 45°
BEND/VERTICAL
CHIMNEY

KHG 714101910



COAXIAL CONDENSATE
COLLECTOR KIT

KHG 714087710



COAXIAL 45° BEND

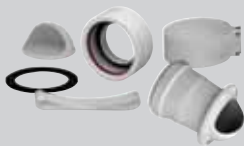
KHG 714101610



INTERNAL SEALING
COLLAR Ø 100

KHG 714017710

FLUE ACCESSORIES FOR DUAL FLUE SYSTEM



**DUAL FLUE AFR
SYSTEM KIT**

KHG 714061510



**CONDENSATE
COLLECTOR KIT**

KHG 714054710



PAINTED TUBE Ø 80

L=1000 KHG 714018310
L=500 KHG 714018210



**TUBE Ø 80
SUPPORTING
BRACKET**

KHG 714037310



**PAINTED INSULATED
TUBE Ø 80/100**

L=1000 KHG 714105410
L= 500 KHG 714105310



**INTERNAL SEALING
COLLAR FOR INSULATED
TUBES Ø 100
INTERNAL SEALING
COLLAR Ø 80**

Ø 80 KHG 714018510
Ø 100 KHG 714017710



BEND 90°/45° Ø 80

90° KHG 714018010
45° KHG 714018110



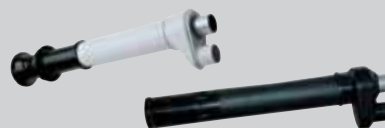
**EXTERNAL SEALING
COLLAR Ø 80**

KHG 714018411



**INSULATED BEND
90°/45° Ø 80**

90° KHG 714105110
45° KHG 714105210



**DUAL FLUE
HORIZONTAL/VERTICAL
CHIMNEY TERMINAL**

horiz. KHG 714010610
vertical KHG 714036510



**INSULATED TUBE
ADAPTER**

KHG 714030510



**DUAL FLUE
TERMINAL Ø 80**

KHG 714010410

BAXI

BAXI



**Quality,
Environment,
Safety**

are Baxi strategic aims
and the awarded
certifications ensure
compliance with
the specific regulations

www.baxiinternational.com
www.baxigroup.com

BAXIs.p.A.

36061 BASSANO DEL GRAPPA (VI) Italy
Via Trozzetti, 20 - Tel. 0424 517111 - Fax 0424 38089
marketing@baxiinternational.com

A BAXI GROUP company

The Company assumes no responsibility for any possible contents mistakes, and reserves the right to make changes in products, due to technical or commercial demands, at any time without notice.

arstudio bassano a. 01/07