



FAITH LUTHERAN CHURCH



# MOUNTAIN MOVER

DECEMBER, 2014



## For More

Discover the many things God is doing at FLC on our website at: [www.faithsd.net](http://www.faithsd.net)

Subscribe to our free weekly **E-pistle Ezine**, and be a part of our **PrayerNet** by sending your email address to [fic@faithsd.net](mailto:fic@faithsd.net).

Get details from our **FLC This Week** printed announcements at worship services.

## SPECIAL POINTS OF INTEREST:

- Faith Lutheran Church has a median age in the mid 30's.
- We encourage the presence of children at worship. We also provide free professional child care.
- Our new worship and ministry building is designed in a California Craftsman style.

## WELCOME HOME TO CHRISTMAS

Come and be inspired in the joyful worship of the living God who became flesh in Jesus Christ!

### CHRISTMAS-EVE CANDLELIGHT AND CAROLS SERVICES

**5:00 P.M. & 8:00 P.M.**

We will celebrate the birth of Christ at **5:00 p.m.** and **8:00 p.m.** on **Christmas-eve, Wednesday, December 24th.** These services feature singing, The Bells of Faith, and a message of hope for this world.

**NOTE:** Members please park in the Casa Bonita parking lot next door to make room for our guests.

### CHRISTMAS DAY COMMUNION SERVICE 10:00 A.M.

The Birth is celebrated on **Thursday, Christmas Day at 10:00 a.m., December 25th.** Joyous singing and Holy Communion will be featured. Pointsettias will be delivered to Casa Bonita Convalescent Hospital residents after worship.



### HELP AT CHRISTMAS WORSHIP

Check the announcement wall to see how you can help with ushering, child care, reading, and so on at our Christmas worship services.

Help celebrate Christmas!



## LEYROY HAYNES GIFTS DUE DEC. 7TH

We have adopted Swain Cottage which houses eleven boys from 11-15 at the Leroy Haynes Center for Christmas. Each boy made three gift wishes and



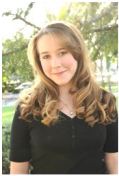
we have fulfilled all of them! Those who signed-up to give gifts are asked to have them at Faith Lutheran Church by this Sunday, December 7th. FLC members and friends also signed-up to bring 2-dozen homemade cookies for each boy. Please bring them to the church on De-

ember 14th.

Our thanks to all who are giving gifts and to Doug Halvorsen for organizing this project again this year! Contact the church at [fic@faithsd.net](mailto:fic@faithsd.net) or at 909 599-3978 with any questions.



# BRING YOUR FAITH INTO FOCUS



## NEW PRE-SCHOOL CHOIR

A third 1/2-hour music and choir class for pre-schoolers plus has been formed and a fourth is under consideration.

Contact the church office at 909 599-3978 or [flc@faithsd.net](mailto:flc@faithsd.net) to express your interest.



## CAROLING

Come and go caroling with FLC youth to local shut-ins, retirement homes and hospitals on Sunday, December 14th.

We'll meet at the church at 6:00 p.m. and come back for hot-chocolate, coffee, cider and donuts.

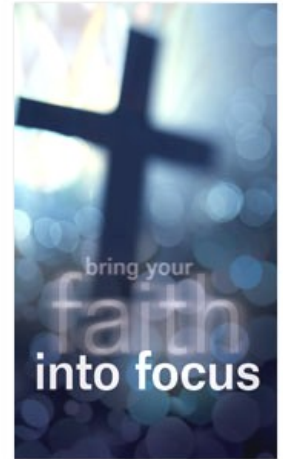
We need drivers and chaperones.

Sign-up at the church to bring some goodies.

## PLAY IN THE BELLS OF FAITH

If you are in high school or older and can read music, you can play in the Bells of Faith Hand Bell Choir for Christmas! Practices start Sunday Dec. 7th at 5:00 p.m.

Contact Dan Ambrosini at [ambrosini.daniel@gmail.com](mailto:ambrosini.daniel@gmail.com) or at (909) 392-8400 to participate.



# FEAST AND MEETING THANKS



Our thanks for this feast!

Our annual family Thanksgiving meal for FLC in which we shared our blessings with each other

in the form of food featured an overflow crowd, a prayer of thanks for the Castro family as they move to Missouri, and an efficient meeting of the congregation, chaired by VP Karol Curtis, to elect officers and church council members for the 2015-2017 term.

We were blessed by the work of God, by our

Women of Faith and our Men of Faith, and the generous participation of FLC members and friends., and for that and so many things, we are so grateful!

## WOMEN OF FAITH

The Women of Faith meet on the first Saturday of each month for planning and Bible Study at 10:00 a.m. in the Parish Hall.

They will have a Christmas Bible Study in December will continue working on fleece blankets.

They are also collect-



ing gifts for the House of Ruth (see page 3)

Contact Nancy Brewster at 626 484-5894 for more information.

## MEN OF FAITH

The Men of Faith gather the second Saturday of each month at 8:00 a.m. in the church parking lot.

They then go out for breakfast together and return to do work projects around the church.

They will be helping the Altar Guild and Women of Faith with

the Hanging of the Greens on December 13th at 9:00 a.m.

Contact Jerry Bain at 626 810-2733 with

any questions about the Men of Faith.



## LIFT

LIFT is a youth group for post-Confirmation through high school youth. They meet Sun-



days at 6:00 p.m. in the Parish Hall, and are considering another time.

They host movie nights, community service projects, Bible study, and more.

Contact Candace Martinez at [martinez.candace000@gmail.com](mailto:martinez.candace000@gmail.com) or at 909 234-1555.

Find them on **Facebook** at **LIFT(Living in Faith Together)**, and come this Sunday.

## CIA

Our Christians in Action (C.I.A.) group is for young adults (from approximately 20—35 years of age). All young adults are welcome.

They gather for Bible Study, brunch, community service projects, beach trips and more.

They are currently collecting paperback books and Bibles for The Prison Library Project (page 3).

Contact James Berkedal ([jberkedal@gmail.com](mailto:jberkedal@gmail.com)) or

Mike or Lia Melton ([michael\\_melton84@yahoo.com](mailto:michael_melton84@yahoo.com)) with questions.

Check the group's Facebook page, **Christians in Action**, for more info.



## OUR THE CHURCH MINISTRY OPPORTUNITIES

### SEEDS OF FAITH

Our Seeds of Faith Garden group will gather at the garden on December 20th at 1:00 p.m.

It will meet Dec. 9th at 7:00 p.m. in the Parish Hall to plan crops.

Contact Lisa Blair at 626 422-9097 or at [lisablair127@yahoo.com](mailto:lisablair127@yahoo.com) for more info on how to help care for Creation.



### HANGING OF THE GREENS FOR CHRISTMAS

Come and join the Men of Faith, the Women of Faith, and the Altar Guild to decorate the Church for Christmas at 9:00 a.m. on Saturday December 13th.



### CHILD CARE PROVIDED AT ALL WORSHIP SERVICES

Free professional child care is provided at all our worship services: Sundays at 8:30 and 10:00 a.m. and Wednesdays at 7:00 p.m. and at Christmas.

We also provide a glass-fronted Cry Room in the worship space and activity sheets for children to use during worship.

## FLOWING FAITH 2015

We are now planning our Flowing Faith Appeal for our Mortgage and General Funds giving in 2015.

Packages will be mailed in early December, there will be a Temple Talk on Dec. 14th, and we will place our pledges on the altar on Dec. 21st.



Pray about how you can support the many ministries we accomplish and our growth in 2015. Pray not to let our mortgage become our ministry.

We do not ask for equal gifts, but for equal sacrifices. Thank you for your generosity!

## HOUSE OF RUTH MINISTRY

The Women of Faith group's congregational Christmas Ministry is benefiting the House of Ruth.

We are reaching out to battered women with children with the love of Jesus Christ.

A table has been set outside at church with a list of items to donate to

their Christmas Store. The deadline for bringing needed items is Sunday, December the 7th. Contact Janet Spencer at 909 599-

6850 with any questions.





## CHRISTMAS CARDS FOR VETS

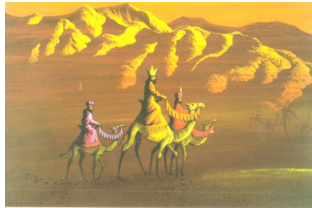
Tables are set out at FLC, filled with Christmas cards to sign for our homeless, hospice and other groups at the Pettis VA Medical Center in Loma Linda, which serves veterans of the wars of the past 60 years.

Sign them at church, take some home and bring them back, or buy them and bring them in.

They will be hand de-

livered for distribution by our Walk, Move, Pray group in mid-December.

Take a few minutes to bring a personalized message of Christmas to our veterans who have given so much.



## YOUTH CHRISTMAS EVENTS

### YOUTH SUNDAY

FLC LIFT and Confirmation Class youth will lead worship on Sunday, December 7th.

Come and support them near the start of a new Church year!

### SUNDAY SCHOOL PROGRAM

The Story of the Christmas Cane will be told by our Sunday School youth on December 21st at 10

a.m.

Bring your child to our 10:00 a.m worship services between now and them to give them an opportunity to share their gifts!

### CAROLLING

(see page two)



## THREE MORE THINGS

# III

### 1.) POINSETTIAS

Please use the enclosed form to help make our Christmas Services a feast for all the senses by donating Christmas Poinsettias.



### 2.) CHRISTMAS INVITATION CARDS

Make use of the small cards with our worship times on them for you to pass around, post, place in your Christmas cards, etc., and mail or distribute our postcards. They are piled around the church for your use.



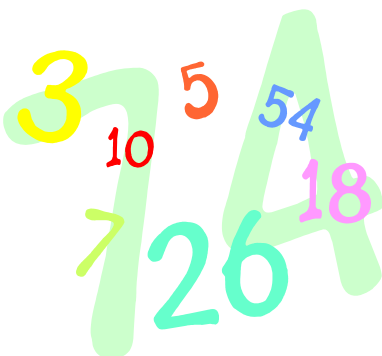
### 3.) BOOKS FOR PRISONERS

Our young adults group is collecting **paperback** Bibles and Christian books in good condition for the Prison Library Project in Claremont. Please place them in the container in the entryway at church.



Help turn a life around.

## BY THE NUMBERS



**People received as members** in 2014: 8.

**Worship attendance** compared to this point last year: -12 (Goal for year +10%)

**Giving to our General Ministry Fund** compared to this point last year: +5% budgeted for year +4%)

**Giving to our Mortgage Fund** this year: \$94,186.42 (95.47% of goal at 92.31% of year).

**Emergency Food Pantry** giving: 7,546 lbs. (98.96% of goal at 92.31% of year).

**Students** enrolled in our pre-school: 81

**Faith Lutheran Church Fan Page** likes on Facebook: 462 (+5)

**Average daily faithsd.net web site visits** in past 30 days: 19.9.

# SOCIAL MEDIA CONNECTIONS

You can connect to all our social media on the "Media" tab at [www.faithsd.net](http://www.faithsd.net).

Check out our "Faith Lutheran Church Fan Page" on **Facebook**. Click on "like" to become a fan. And, you can friend Pastor Berkedal on **Facebook** by doing a search for David Berkedal.

"Follow" us on **Twitter** by going to [twitter](http://twitter.com)

[www.faithsd.net](http://www.faithsd.net), from our Media tab and signing-in, Pastor Berkedal's **Blog** posts short articles periodically. Check it out through our web site Media tab.

Check out our **YouTube channel** at [www.YouTube.com/FLC505](http://www.YouTube.com/FLC505) and get your free subscription to FLC videos.

Find pictures of our events on our Faith Lutheran Church Fan Page

on Facebook and in Shutterfly albums (password **faithsd**).

Skype Pastor Berkedal at [david.berkedal](http://david.berkedal.com).

Username on Instagram: **flcsd**. #FLCpens

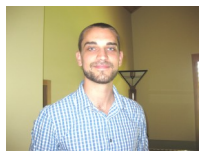
Review us on Yelp.com on your phone Find special opportunities for giving at [www.faithsd.net](http://www.faithsd.net).

Come in and get connected.



## NEW ADULT CHOIR

We need more men! We are forming a choir to sing on Sunday mornings. The choir rehearses



Thursday evenings at 7:00 p.m.. Come

and enrich our worship by singing to the LORD!

FLC member Dan Am-brosini is directing the

choir. Dan is a graduate of Cal State Long Beach in music education, and is starting with the very basics. Our initial goal is for the choir to learn the liturgy in 4-part harmony and to support congregational singing.

## CASA BONITA GIFTS

Help us provide a little extra cheer to the residents of Casa Bonita Convalescent Hospital next door.

Please do **not** wrap your gifts. Gift suggestions include calendars



for 2015, socks for men, slip-on slippers for men and women, and lip balm (no scented lotions or cologne).

Place your gifts in the decorated box at church.

The deadline for giving gifts is Thursday, Dec. 18th.

Help is needed to wrap the gifts after the 17th.

Call Cheri Tyler at 909 592-6807 for more info.

## A NOTE FROM THE PASTOR

This is the time of year when I take a deep sigh and wonder how Christmas got to be such a mess.

We have barely pushed ourselves away from the Thanksgiving table when, like a starter's pistol, we are instructed to buy!

The demands pile up, the expectations become

more impossible, and we wonder whose idea this was in the first place.

We wonder how we will ever finish everything we have to do.

Wonder is a big part of Christmas, the wrong kind of wonder.

Instead, I propose a focus on renewed wonder this year. The wonder of the love of God.

The wonder of the Word made flesh. The wonder of the second chances, of unearned grace, of God's meeting our sin with the cross.

Why? And why for me? This is the wonder of Christmas!



Find an expanded version of this story and comment on it at <http://pastorberkedalsblog.blogspot.com/>

*David Berkedal, Pastor*



# December

[www.faithsd.net](http://www.faithsd.net)

## FAITH LUTHERAN CHURCH

505 East Bonita Avenue  
 San Dimas, California 91773  
 P 909 599-3978  
 F 909 599-3324  
 E [flc@faithsd.net](mailto:flc@faithsd.net)  
 W [www.faithsd.net](http://www.faithsd.net)  
 David Berkedal, Pastor  
 E [dberkedal@faithsd.net](mailto:dberkedal@faithsd.net)



Discover more news, photos and info at our web site:

[FAITHSD.NET](http://FAITHSD.NET)



## THE VISION CORNER

What if we provided the funds to pay our mortgage, support all our existing ministries, **and** call an associate pastor and a minister of music?

What gifts and strengths would we want those persons to have? What new ministries is God calling us to do? Who could we reach toward realizing our mission to introduce people to new life in Jesus Christ that grows into enthusiastic living?

Send your thoughts to [flc@faithsd.net](mailto:flc@faithsd.net) or call them in to the church at 909 599-3978, or speak with Pastor Berkedal or a member of our Church Council about them. Pray about how you can help realize our mission.



### INSIDE THIS ISSUE:

PLAY BELLS OF FAITH <sup>2</sup>

HANGING OF GREENS <sup>3</sup>

CARDS FOR VETS <sup>4</sup>

CHILDREN'S CHRSM. PLAY <sup>4</sup>

CASA BONITA GIFTS <sup>5</sup>

CALENDAR AND FYI <sup>IN-SE-RT</sup>

INTRODUCING PEOPLE TO NEW LIFE IN JESUS CHRIST THAT GROWS INTO ENTHUSIASTIC CHRISTIAN LIVING.

## PHOTO OF THE MONTH



Lutheran potluck! There's nothing like it as an expression of our love for one another on a day of Thanksgiving.





# CHRISTMAS POINSETTIAS

Faith Lutheran Church will decorate our altar area this year with traditional Christmas Poinsettias.

You are invited to use this form to donate poinsettias for our Christmas services.

Gifts and memorials will be acknowledged in the Christmas-eve and Christmas Day bulletins unless you request otherwise.

The cost per plant is \$7.00, which may be folded into this form and placed in the offering plate at church, or mailed to **Faith Lutheran Church, 505 East Bonita Avenue, San Dimas, California 91773** by Dec. 19th. The congregation will purchase the plants and have them delivered to the church.

Thank you for helping make this year's Christmas a celebration for all the senses.

Name \_\_\_\_\_  
or, check here \_\_\_\_\_ if anonymous.

I would like to give \_\_\_\_\_ plant/s in  
(check one:) \_\_\_\_\_ honor \_\_\_\_\_ memory of:

\_\_\_\_\_.

I would like my plant (check one):  
\_\_\_\_ saved for me to take home after  
the December 25th service.  
\_\_\_\_ used by the church for a shut-in.



# CHRISTMAS POINSETTIAS

Faith Lutheran Church will decorate our altar area this year with traditional Christmas Poinsettias.

You are invited to use this form to donate poinsettias for our Christmas services.

Gifts and memorials will be acknowledged in the Christmas-eve and Christmas Day bulletins unless you request otherwise.

The cost per plant is \$7.00, which may be folded into this form and placed in the offering plate at church, or mailed to **Faith Lutheran Church, 505 East Bonita Avenue, San Dimas, California 91773** by Dec. 19th. The congregation will purchase the plants and have them delivered to the church.

Thank you for helping make this year's Christmas a celebration for all the senses.

Name \_\_\_\_\_  
or, check here \_\_\_\_\_ if anonymous.

I would like to give \_\_\_\_\_ plant/s in  
(check one:) \_\_\_\_\_ honor \_\_\_\_\_ memory of:

\_\_\_\_\_.

I would like my plant (check one):  
\_\_\_\_ saved for me to take home after  
the December 25th service.  
\_\_\_\_ used by the church for a shut-in.



# December 2014 at Faith Lutheran Church 909 599-3978

Sunday	Monday	Tuesday	Wednesday	Thursday	Friday	Saturday
						
	<b>1</b> 3:20 PM Pre-school Choir 1  6:00 PM Girl Scouts  7:00 PM FLC Book Club	<b>2</b> 9:20 AM Pre-school Choir 2	<b>3</b> 10:00 AM San Dimas MOMS Club  6:15 PM Agape Potluck Supper  7:00 PM En Theos Prayer, Holy Communion & Bible Study	<b>4</b> 4:00 PM Walk, Dance, Pray  5:15 PM Confirmation Class + Pizza  7:00 PM Adult Choir Rehearsal  7:00 PM San Dimas Toast. in Parish Hall	<b>5</b> 4:00 PM Confirmation Class + Pizza	<b>6</b> 9:00 AM Pre-school Choir 3  10:00 AM Women of Faith Meeting
<b>7</b> Youth Sunday  8:30 AM Traditional Blend Worship Service  10:00 AM Ancient-Future Worship Service  10:00 AM Sunday School after Childrens Sermon  2:00 PM Orchestra rehearsal  5:00 PM Bells of Faith Practice  6:00 PM LIFT Youth Group	<b>8</b> 3:20 PM Pre-school Choir 1  6:00 PM Girl Scouts  7:00 PM FLC Book Club	<b>9</b> 9:20 AM Pre-school Choir 2  7:00 PM Church Council  7:00 PM Seeds of Faith Group planning meeting	<b>10</b> 6:15 PM Agape Potluck Supper  7:00 PM En Theos Prayer, Holy Communion & Bible Study	<b>11</b> 4:00 PM Walk, Dance, Pray  5:15 PM Confirmation Class  7:00 PM Adult Choir Rehearsal	<b>12</b> 4:00 PM Confirmation Class  7:00 PM School Christmas Program	<b>13</b> 8:00 AM Men's Breakfast & Work Morning  <b>9:00 AM Hanging of the Greens</b>  9:00 AM Pre-school Choir 3
<b>14</b> Flowing Faith 2015 Kick-off  8:30 AM Traditional Blend Worship Service  10:00 AM Ancient-Future Worship Service  10:00 AM Sunday School after Children's Sermon  2:00 PM Orchestra rehearsal  5:00 PM Bells of Faith Practice  <b>6:00 PM Christmas Caroling</b>	<b>15</b> 3:20 PM Pre-school Choir 1  6:00 PM Girl Scouts  7:00 PM FLC Book Club	<b>16</b> 9:20 AM Pre-school Choir 2  9:30 AM School Comm.	<b>17</b> 6:15 PM Agape Potluck Supper  7:00 PM En Theos Prayer, Holy Communion & Bible Study	<b>18</b> 4:00 PM Walk, Dance, Pray  5:15 PM Confirmation Class  7:00 PM Adult Choir Rehearsal  7:00 PM San Dimas Toast. in Parish Hall	<b>19</b> 4:00 PM Confirmation Class	<b>20</b> 9:00 AM Pre-school Choir 3  1:00 PM Seeds of Faith Garden Group
<b>21</b> Last Sunday of Advent  8:30 AM Traditional Blend Worship Service  <b>10:00 AM Ancient-Future Worship Service with Sunday School Christmas Play</b>  10:00 AM Sunday School after Children's Sermon  2:00 PM Orchestra rehearsal  5:00 PM Bells of Faith Practice  6:00 PM LIFT Youth Group	<b>22</b> 3:20 PM Pre-school Choir 1  6:00 PM Girl Scouts	<b>23</b> 9:20 AM Pre-school Choir 2	<b>24</b> 5:00 p.m. & 8:00 p.m. Christmas-eve Candlelight Services	<b>25</b> 10:00 a.m. Christmas Day Holy Communion	<b>26</b>	<b>27</b> 9:00 AM Pre-school Choir 3
<b>28</b> First Sunday after Christmas  8:30 AM Traditional Blend Worship Service  9:30 AM Altar Guild  10:00 AM Ancient-Future Worship Service  10:00 AM Sunday School after Children's Sermon  2:00 PM Orchestra rehearsal  5:00 PM Bells of Faith Practice  6:00 PM LIFT Youth Group	<b>29</b> 3:20 PM Pre-school Choir 1  6:00 PM Girl Scouts	<b>30</b> 9:20 AM Pre-school Choir 2	<b>31</b>			



## For Your Information

Faith Lutheran Church  
505 East Bonita Avenue  
San Dimas, California  
91773-3124  
David Berkedal, Pastor  
Email: dberkedal@faithsd.net  
Phone: 909-599-3978  
Fax: 909-599-3324  
www.faithsd.net

FLC Pre-school and Day Care  
Gail Balandran, Director  
909-599-0783

Send your email address  
to [flc@faithsd.net](mailto:flc@faithsd.net) and  
receive the FLC E-pistle  
ezine online!



# Worship Services

## Sundays :

8:30 a.m. Traditional Blend

10:00 a.m. Ancient-Future

(Sunday School youth go to classes after  
Children's Sermon Sept.-June)

## Wednesdays :

7:00 p.m. EnTheos Evening  
Worship

(optional potluck meal at 6:15 p.m.)

*Call these servant/leaders for more information:*

### Ministry

Altar Guild  
Bells of Faith Hand Bell Choir  
Book Club  
Church Council  
CIA—Christians in Action (Young Adults)  
Confirmation (Grades 7th-8th+)  
Deep Heart's Core Retreat Group  
Family Harvest Festival  
Food Pantry  
Hosts/Hostesses  
Job Network (Seekers & Providers)  
LIFT—Living in Faith Together (post-Conf.-20)  
Men of Faith group  
Newcomers Classes  
Pre-school and Day Care Committee  
Readers & C.A.T.s Scheduling  
Seeds of Faith Garden  
Sunday School  
    Co-Superintendents  
Ushers  
Walk, Move, Pray  
WNL! Midweek Potlucks  
Women of Faith group

### Contact Person

Diane Biermann  
Dan Ambrosini  
Sam Kamler  
Tom Marino  
Lia Melton  
David Berkedal, Pastor  
Rev. Sally Welch  
Tom Marino  
Jerry and Betsy Dade  
Tedde Smith  
Tom Marino  
Candace Martinez  
Jerry Bain  
David Berkedal, Pastor  
Cheri Tyler  
Doug Halvorsen  
Lisa Blair  
Elizabeth Crowther  
Katie Gyore  
Don Caldwell  
Rev. Sally Welch  
Kay Moore  
Nancy Brewster

### Phone

909 596-8042  
909 392-8400  
909 599-1689  
626 914-1879  
909 599-9643  
909 599-3978  
909 599-3870  
626 914-1879  
909 592-3236  
909 971-3435  
909 476-0343  
909 234-1555  
626 810-2733  
909 599-3978  
909 592-6807  
626 532-0576  
626 422-9097  
909 592-7523  
909 962-7060  
909 596-6550  
909 599-3870  
909 241-1049  
626 484-5894

[www.faithsd.net](http://www.faithsd.net)

