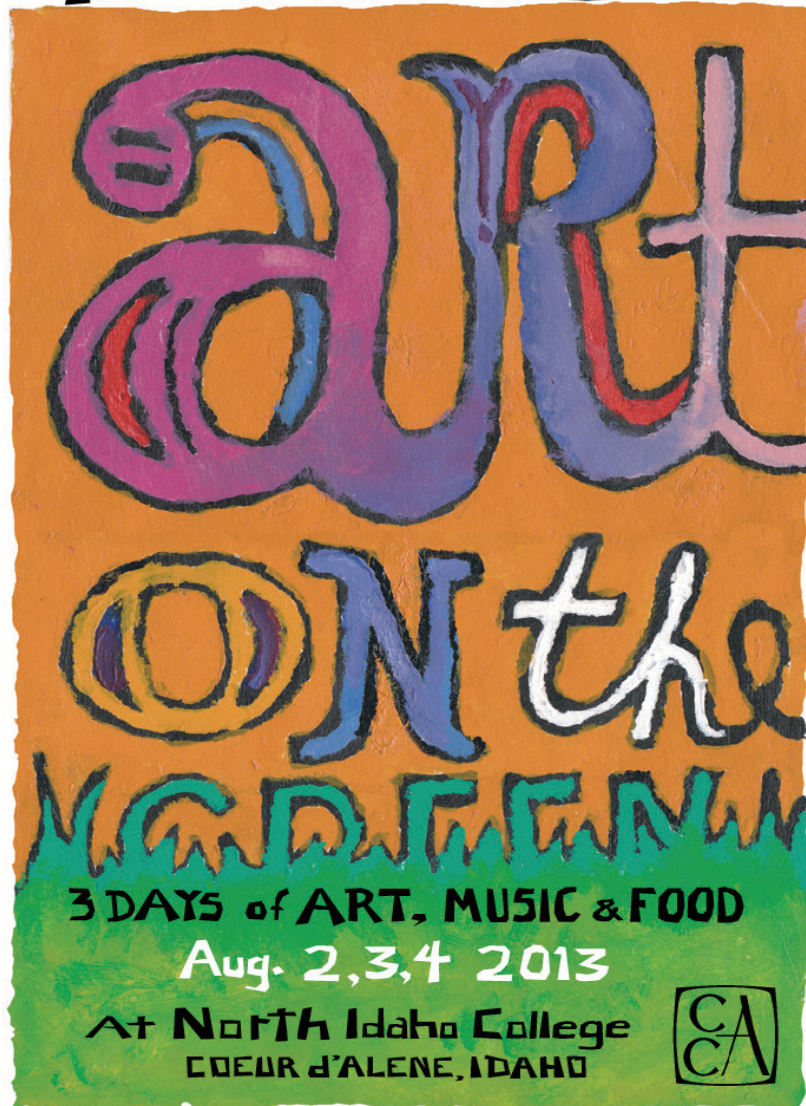


---

---

# 45<sup>th</sup> ANNUAL



Artwork by Harold Balazs

## Food and entertainment for the whole family

Made possible by the volunteers of CCA - Citizens' Council for the Arts

## WELCOME

A marketplace, performance space and a gathering place for friends and families, this is the highlight of summer in Coeur d'Alene. Over 145 artists, a variety of talented performers and over 500 volunteers come together to present Art on the Green for more than 50,000 people to enjoy.

Art on the Green is a great place to buy handcrafted works in glass, clay, leather, wood, metal, and fiber directly from the artists. Or, if you prefer, you can create your own special art in the children section for children and adults.

Enjoy corn-on-the cob and German sausage as well as new food selections, while you JOIN in the celebration of art, creativity and friendship at Art on the Green! And remember, 99% of the money you "invest" at Art on the Green is returned to our community to encourage and support the arts

---

---

# 2013 COMMITTEES

## ART ON THE GREEN

**Banners:** Carol Clark, Chair

**Booth Screening & Check-In:** Allen Dodge, Mike Dodge, Clark Lusk, Gracie Lusk, Greg Torline, Windy Hurrell, Rhonda Smalley

**Booth Sitters:** Florine Dooley

**Clothesline:** Vicky Houle, Yvonne Benzinger

**Children's Art:** Iris Siegler, Thomas Orjala

**Hospitality & Information:** Loren & Janell Burke, Deb Cordes & Roger Snyder, Co-chairs

**Juried Show:** Shelly Servick-Lewis, Chair; Jolie Bazler, Chelsea Cordova, Margie Fiedler, Karmen Frampton, Sue Flammia, Gene LeRoy, Jay Lewis, Barb & Norm Lovett, Chass Nelson, Jai Nelson, Mary Lou Reed, Karmen Servick, Ed Servick, Carol Stacey

**Performing Arts:** Colleen Hunter, Chair; Susan McGinty, Scott Colwes, Rhea Giffin, Susie Fauntleroy, Jean Decker

**Publicity:** Jolie Bazler, Vicky Houle, Carol Stacey, Joe Sharnetsky

**Poster Distribution:** Carol Stacey, Roberta Olson, Windy Hurrell

**Recycling:** Scott Colwes, Chair; Morgan Dodge

**Technical Director/North Idaho College Liaison:** Mike Dodge/Clark Lusk

**Technical Trouble Shooters:** Don Sausser (retired)

**Web Page:** Christine Larsen

### Food

**Food Chicken & Salmon:** Mike & Sally Dodge, Barb McFarland and the Dodge Family "Chickens"

**Coffee:** Spokane Symphony Associates, Mechetti Chapter

**Corn:** Daugharty Family, David Larsen, Katie Lewis Family, Donnenberg Family

**Ice Cream:** Rick & Vickie Scuderi, Co-chairs, Lin Butler, Deater Butler, Ricky & Andy Scuderi, Joe Maimone

**Soft Drinks:** Ken Korczyk, Chair, Roz Livingston, Pam & Ron Gomes, Jennie Lamb, Runkle

**SnoCones, Popcorn:** Scott Hunter, Abby Hunter

**Sandwiches:** Becky Brown, Marty McCain, Co-Chair-DeeDee Brown, Lief Williams, Brendan Kingrey

**Shift Captains:** Ginny Johnson

**Thelma's Frozen Lemonade:** Natasha Benefield

**Vegetarian:** Zeb & Karrie Brown, Chairs, Faith Normington/Veggie Volunteer Coordinator

### CCA Sponsored Projects

**ArtShop:** Renee Kauffman, Jessica Hammond, Lyn Gerhard, Sara Garrison, Sandy Rosco

**Harding PlaySpace:** Janet Torline

**The Gallery:** Sue Flammia, Theresa Shaffer

**Patrick Flammia Drawing Institute:** Allen Dodge, Rachael Dodge, Libby Gerber

### ArtShop has been arranged in cooperation with School District 271 and is funded by the Citizens' Council for the Arts

Special thanks to the ArtShop Instructors: Terry Barnard "Corky the Clown", Russ Bean, Michael Moon Bear, Bob Brunn, Teri Burch, Kelsey Cordes-Snyder, Jason Byers, Marilyn Griffiths, David Groth, Jan Hallmark, Alyssa Howard, Barbara Irvine, Jeff Johnson, Brianna Knudtsen, Deborah Loy, Roni Melton, Liz Mowrey, Sally Eilering-Sorenson, Beth Spohr, Carol Uptagrafft, Don Watson. Also thanks to Hayden Meadows Elementary School and School District #271.

**Citizens' Council for the Arts** wishes to acknowledge with gratitude the generous assistance given by many from Coeur d'Alene and Spokane. In addition, Citizens' Council for the Arts is indebted for support, cooperation and help to: A-Z Rentals, Action Printers, Arby's for the sauce, City of Coeur d'Alene, Coeur d'Alene Press, Concession Supply, S.W. Colwes Piano Service, Steinway Piano Gallery of Spokane, Mike Dodge Construction, Scott Dodson/Sandcastle and Central Pre-Mix for the Sand, Flammia & Solomon, Franz Bakery, Ken Glastre & Crew, Harding Family Center, Hayden West U-Haul & Storage, Honey Buckets, Interstate Gas, The Inlander, Jim Monroe/Intermountain Security, Ellen Scriven & Paul Smith/Killarney Farm, Christine Larsen for our web page, Target Media Northwest Publishing/Spokane Print & Mail, Panhandle State Bank, Mobile Fleet Service, Nickel's Worth, special thanks to North Idaho College Administration and all the help from maintenance and grounds, Omni Graphics, Pepsi, Ready Ice, Don Sausser, Silver Lake Motel, Jim Solomon, Specialty Tree Services, Inc./Ken Roberge, Sun Rental, NW Museum of Art & Culture, Spokesman-Review, Super One Foods, The Fish Folks, Tim's Special Cut Meats, Waste Management, Williams Inland Distributors, Fay Wright and Gayle Hughes for the History Book, parents who donated scholarships for ArtShop; Kim Emerson, Tommy Griffin, Harold Balazs for the PlaySpace.

Citizens' Council for the Arts - Mission Statement

*Citizens' Council for the Arts is a non-profit group formed to encourage, promote and support the arts in the community.*

**We...** Are a group of over 500 volunteers -- Sponsor community art projects, including ArtShop (now in its 33rd year); The Gallery at North Idaho College -- Make annual donations of artwork to North Idaho College, public buildings and local schools. Create, produce and support **Art on the Green**.



### Citizens' Council for the Arts 2013 Officers and Staff

President: Carol Stacey  
Vice President: Theresa Shaffer  
Secretary: Sue Flammia  
Treasurer: Mike Dodge

Accountant: Clark Anderson McNelis  
Festival Banking: Panhandle State Bank  
Office Manager: Catherine Lavonture Hurrell  
Publicity/Volunteer Coordinator: Jolie Bazler

---

---

# ENTERTAINMENT SCHEDULE

## August 2, 3 & 4, 2013

[www.artonthegreen.org/info@artonthegreen.org](http://www.artonthegreen.org/info@artonthegreen.org)

### NORTH STAGE

#### Friday – August 2

- 12:00 Art Shop – *Children’s Art in Motion*
- 3:15 San Francisco Scottish Fiddlers – *Celtic*
- 4:30 Scott Cossu Ensemble – *Contemporary Jazz*
- 6:00 Impossible Bird – *Folk Singer/Songwriter*
- 7:30 Tuxedo Junction – *Swing Big Band*

#### Saturday – August 3

- 10:00 La Dolce Musica – *Classical*
- 11:00 Coeur d’Alene Symphony – *Classical*
- 12:00 Inland Northwest Dance Assn.
- 1:30 The Ensemble of the Northwest Music Chorale
- 3:00 Paul Peress – *Jazz*
- 4:30 Kris Orlovski – *Singer/Songwriter*
- 6:00 Camille Bloom Trio – *Singer/Songwriter*
- 7:30 Milonga – *Salsa*

#### Sunday – August 4

- 10:00 Doug Porter – *Guitar*
- 11:30 Scott Kirby – *Piano*
- 1:00 Mary Lou & The Dion Family – *Popular*
- 2:30 Gypsy Soul – *Pop/Singer/Songwriter*
- 4:00 Coeurimba – *Marimba*

### PERFORMANCE SCHEDULE SUBJECT TO CHANGE

#### Harold Balazs

##### 2013 Poster Design

**Harold Balazs**, who designed the 2013 poster for Art on the Green, has been a volunteer and supporter of Art on the Green since it started 45 years ago. Harold, of Mead, WA., is a sculptor renowned for his creative use of many kinds of materials including metal, clay, enamel. Harold’s sculptures range in size from the monumental Rotary Fountain in Spokane, Washington, to exquisite jewelry. Harold’s paintings, silk-screened prints, and graphics are in private and public collections. Harold worked with other artists and volunteers to create the “Art Space” for children at the Harding Family Center in Coeur d’Alene. Harold’s sense of wonder inspires all of us. Thank you Harold

#### VOLUNTEERS

**Art on the Green** is a “work of art,” produced by hundreds of volunteers who donate time and talent. The festival originally was started to promote the arts in Coeur d’Alene and this geographic region and has become the major multi-arts event of the summer. Volunteers are the heart of Art on the Green. Citizens’ Council for the Arts thanks every volunteer who has worked at Art on the Green – past and present

**Free shuttle bus operates between Art on the Green and Downtown Coeur d’Alene**

### SOUTH STAGE

#### Friday – August 2

- 11:00 Kids Poetry Reading
- 12:00 All That Jazz – *Jazz*
- 1:30 Beth Pederson/Bruce Bishop – *Folk/Singer/Songwriter*
- 3:00 Paul Grove – *Classical Guitar*
- 4:30 ZCDC – *Fiddle Tunes*
- 6:00 FUZE – *Four 12 Year Old Jugglers*

#### Saturday – August 3

- 10:00 Christian Youth Theatre
- 11:30 Brad Keeler & Linda Parman Duo Jazz
- 1:00 Kathy Colton & The Reluctants – *Folk/Pop*
- 2:30 Impossible Bird – *Folk Singer/Songwriter*
- 4:00 Gypsy Soul – *Pop/Singer/Songwriter*
- 5:30 Scott Cossu Ensemble – *Contemporary/Jazz*

#### Sunday – August 4

- 10:30 San Francisco Scottish Fiddlers – *Celtic*
- 12:00 Canned Music – *Pop/Rock/Oldie*
- 1:30 Nicole Lewis – *Jazz/Vocal*
- 3:00 Chutzpah – *Klezmer/Jazz*

*NIC Booster Club Wine & Beer Garden  
(located behind the gym)*

#### LOOK FOR: THE SANDCASTLE

*Thanks Silverlake Motel*

#### CCA Winter Lecture Series

The Winter Lecture Series sponsored by Citizens’ Council for the Arts is offered on a Sunday afternoon in January, February, and March. The exact dates and topics will be posted on the CCA website. The hour lecture/performance offers a format for discussion about specific area of music and art from local instructors and performers.

#### THE FESTIVAL

**Art on the Green** is sponsored by Citizens’ Council for the Arts, a non-profit corporation of interested volunteers formed to encourage and promote the arts. Active participation by all interested members of the community is invited and encouraged. Citizens’ Council for the Arts prohibits discrimination on the basis of race, color, national origin, sex, handicap or age.

#### FESTIVAL PROCEEDS

Festival proceeds – Money from sales of food and from commissions is used to produce the festival and to sponsor other special projects including ArtShop and to give assistance to the Gallery and Performing Arts Alliances such as the Coeur d’Alene Symphony, and Spokane Symphony.



## TUXEDO JUNCTION BIG BAND

*Improving the world one note at a time!*

**Tuxedo Junction Big Band** (TJBB) is heralded as the "Best Big Band" in the Inland Empire. This fantastic band is made up of an all-star cast of musicians and vocalists from the Coeur d'Alene - Spokane areas. Its music ranges from the golden era of the Big Bands to the new standards of today. Everything from Glenn Miller, Tommy Dorsey and Duke Ellington to waltzes, Latin, and more allows the sound of this Big Band to be a thrill for all. Their sound consists of strong soloists and solid ensemble playing making this a truly entertaining experience.

### GYPSY SOUL

From the start, Cilette and Roman have done things their way, gathering a devoted fan base with their personal approach and compelling story, which continues on Gypsy Soul's tenth album, the aptly titled **The World Is My Country**, for their own indie Off the Beaten Track Recordings label. The name of the album comes from the famous quote by American revolutionary Thomas Paine. The new album represents both a personal and musical rebirth, coming after a trial separation that found the couple living down the road from one another, while continuing to perform together as best friends. **The World Is My Country** offers a wide range of styles, from the somber cello which marks the moody, intense, cinematic emo-rock of "Love's the Only Thing" to the slinky, bass and drums R&B feel of "I'm Calling In," with its shimmering pop chorus, a tale of a soul-searching journey through darkness only to discover the answers were within the whole time.

### ALL THAT JAZZ

A regional favorite for the past decade, Pearl Harwood (piano), Sharon Burkland (vocals), Bruce Pennell (bass) and Tom Schager (drums) have been entertaining audiences of all sizes with their captivating sounds. The individuals within this group have many years of experience playing with "name entertainers", performing at famous world venues, and just plain having fun making music of the songs from years ago for listeners of all ages.

### MILONGA

**Milonga** brings the heat to the Spokane music scene via live original Latin music. Local fans, press and musicians have hailed the act as the hottest Latin band in town for several reasons. Milonga has been the front runner in catalyzing the local music scene by combining a packed dance floor with an ethno-musical experience, authentic to their Latino roots. This multi-cultural group focuses on a Pan-Latin sound, representing the musical dialects of countless regions throughout the Spanish-speaking Empire. In a world of salsa Milonga is the whole enchilada.

### KRIS ORLOWSKI

Baritone vocalist, new folk songwriter **Kris Orłowski** writes from a real, unguarded place and that accessibility is tangible on stage and off. Sound on the Sound brands him as "a troubadour by definition, whose full bodied croon develops

a charisma all its own." With the significant talents of Mark Isakson on guitar, Torry Anderson on keys, Greg Garcia on drums and Tyler Carroll on bass, the northwest folk pop band is turning heads. Their new five songs EP, featuring a 17-piece orchestra, keeps the band evolving in sound with songwriting at the core of their future

### PAUL PERESS

**Paul Peress** is a Grammy nominated drummer, band leader, producer, and songwriter, based out of New York City. He has worked with Brenda Russell, Moby, The B-52's, Mary Wilson, Deniece Williams, Regina Belle, Tom Scott, Stephen Bishop, Jeff Golub.. His band, **The Paul Peress Project**, has performed in over 20 countries. Paul is the son of a prolific poet, and an accomplished classical music conductor. Of Puerto Rican heritage, Paul grew up on the Gulf of Mexico in Corpus Christi, Texas. He moved to New York City in 1980. He put himself through school at Columbia University, working nights, and studying drums privately with Kenwood Dennard, then Kim Plainfield, who each influenced him in the Latin jazz and Brazilian genres. Paul's first project was a jazz/rock band, Double Exposure, co-led with his singer/songwriter sister, Anika Paris. They put out a CD in the 80's while appearing regularly at the Bitter End. Peress got his big break as a solo artist – a 1996 appearance at the first St. Kitts Music Festival. [More@www.paulperess.com](http://www.paulperess.com).

### CHILDREN'S POETRY READING

Please enjoy our **Children's Poetry** wall near the Children's Hands-On Art area. It is a wonderful collection of original poetry by local youth. Have fun looking for your poem if you submitted one! "Poetry is a deal of joy and pain and wonder, with a dash of dictionary." Kahil Gibran.

### IMPOSSIBLE BIRD

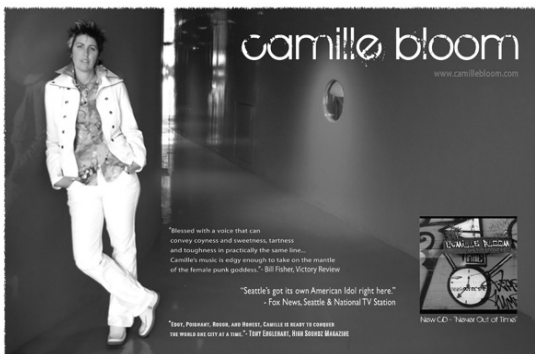
Nick Drummond is former front man and songwriter for the hit Seattle band The Senate. Tyler Carson is an internationally known fiddler/violinist most recently from Jack Maple. Together they have teamed up to combine their unique talents into one formidable pairing. Fiddle, guitar, voice. Nick Drummond is former front man and songwriter for the Welcome, to the new beginning.

### LA DOLCE MUSICA

Friends and musical colleagues, Cathyanne Nonini, violinist, and Colleen Hunter, pianist, enjoy performing together. Both are teachers of their respective instruments in the Coeur d'Alene and Spokane area and are involved with many musical endeavors. Passionate about the beauty of music, they enjoy collaborating and sharing this gift. Together they offer **La Dolce Musica**.

### THE NICOLE LEWIS BAND

**The Nicole Lewis Band** is full of talented players and poetic ideas. With jazz background and award-winning vocals, the music speaks with soulful rhythm and country flavor. A product of a Motown-loving mother, and the down home country attitude of her father, Nicole brings a new approach to pop-country, and the band brings it on home.



## CAMILLE BLOOM

Gibson endorsed International Act, **Camille Bloom** has toured and played premier venues in 9 different countries, released seven recordings, and continues to wow audiences with her dynamic voice and feisty acoustic music. Combining percussive guitar and a voice that can “purr and wail” (Victory Review), **Camille** has had songs licensed for use in twenty one shows on Major Network Channels, and has been added to over 200 major and college radio stations throughout the U.S. and Western Europe. **Camille** takes time out of her schedule to direct a rock n roll camp for kids in Seattle. Known for her incredibly dynamic voice and vivid songwriting,

## SCOTT KIRBY

Pianist/composer **Scott Kirby** specializes in distinctly American musical styles, which include Classic Ragtime, New Ragtime, Creole Music and Terra Verde. As a performer his is also an education providing historical context and musical insight into the program as it unfolds. Whether on the concert stage or in the classroom **Kirby** offers a musical experience which is informative and intimate, educational yet highly personal. Each presentation may include examples from North America, South America and the Caribbean

## ZCDC

**Zoe Cox and Dad Cox** are **ZCDC**. Zoe is 11 years old and has been playing the violin since age 4. She started playing competition three years ago. Zoe has won a couple of local competitions. Zoe is accompanied by her father Tony Cox on guitar. He is a local school teacher.

## CANNED MUSIC

**Canned Music** is delighted to be part of the Inland Northwest music scene since 1997. **Canned Music** is Steve Sackett on electric and fretless basses, Brad Keeler, multi-instrumentalist, Kathy Sackett, guitar and Linda Parman, acoustic guitar and flute. The signature sound of **Canned Music** is our blend of three-part harmony combined with great solo work by Brad Keeler. We call our music Folk/Jazz and our goal is to play memorable music that tells a story, gets the audience singing or provides a respite from worries of the world. Through roots music, standards, blues to classics from the rock era, **Canned Music** will connect.

## COEUR D'ALENE SYMPHONY CHAMBER ORCHESTRA

For 30 years, the **Coeur d'Alene Symphony Orchestra** has been bringing the best in musical entertainment to the people of this region. This season's offerings feature a variety of regional

groups and music selected to please a wide range of tastes ranging from Beethoven to modern composers. David Demand is Artistic Director.

## PAUL GROVE

Guitarist **Paul Grove** will perform works from Spain and Latin America that celebrate the season of summer. These works will include serenades from the ancient Spanish city of Granada; contrasting Brazilians works from Rio de Janeiro and the northeastern city of Bahia; homage to Bach by a Paraguayan; a set of variations on a Mozart tune; and others.

## SCOTT COSSU

The **Scott Cossu Trio** will return to “Art on the Green” for the 2013 festival. Scott will be featuring pieces from his latest recording! Jazz Boogie and Deja Blues. The trio will include Scott on piano, Steve Banks on drums and noted long-time partner, Yan M Anakas on guitar. They will also be performing selections from “Tides between Us” and “When Spirits Fly” in this performance.

## KATHY COLTON & THE RELUCTANTS

**Kathy Colton & the Reluctants** have performed around the local area and the region for several years. **The Reluctants** consist of Denise Bartlett, Maxine Whiteside, Carla Grant and Kathy with lead vocals and guitar. These women form a strong and dynamic group with powerful harmonies, strong messages of love and a great time on the stage.

## CHUTZPAH

**Chutzpah** began in 1992 and was the first Klezmer band in the Inland Empire. Klezmer music is jazzy Jewish soul (and folk, too) music that originated from Eastern Europe with the surge of Jewish immigration into the United States in the early 1900's. It was transcribed and played in the eastern U.S. by many big bands and played at weddings and bar mitzvahs. It is quite lively and festive and has enjoyed a rediscovery all over the world.

## BETH PEDERSON & BRUCE BISHOP

**Beth Pederson and Bruce Bishop** have spent a lifetime exploring different sides of the same musical equation. Beth's background as a singer-songwriter with the Wild Roses contemporary folk duo and Bruce's deep rooted blues and jazz history in live performance and studio listener you will feel a part of their sincere outpouring of human experience, heartfelt story-telling, and humorous look on life. recording have brought together a winning combination. Their exceptional talents as singers and players bring a new twist to old standards and moving interpretations of life stories. These two unassuming musical giants will delight audiences everywhere. More than just being an audiences everywhere. More than just being a listener you will feel a part of their sincere outpouring of human experience, heartfelt story-telling, and humorous look on life.

---

---

## DOUG PORTER

**Doug Porter** has been performing for many years having opened for David Wilcox at the Met Theater in Spokane (now the Bing Crosby Theater) twice, played multiple times at Art on the Green. Doug studied many years ago with a great unknown jazz guitarist, Chuck Hoefler who had studied with Barney Kessel. From Chuck, Doug learned about chord voicings and how different chords can evoke emotions and how to write solo guitar arrangements to compliment the lyrics of the song. One of the first songs Doug learned was "The End" by the Doors. Doug was intrigued by the use of drone strings. Doug incorporates both of these concepts in much of his original and arranged pieces, spiced with the influence of the wide variety of artists and music he listens to. Those who enjoy finger style contemporary guitar may enjoy Doug's music.

## INLAND NORTHWEST DANCE ASSOCIATION

**The Inland Northwest Dance Association Inc.** is a 501(c) 3 non-profit organization dedicated to promoting the art of dance in The Inland Northwest. Our members are dance instructors, studio owners, and dance educators from Washington, Idaho, Montana, Oregon and Canada. **Inland Northwest Dance Association Inc.** was established in 1991. Over the past eighteen years. In association with National Dance Week representing the State of Washington and Idaho **INDA** host Dance Fest. This successful free festival features all forms of dance under one roof at the same time. The public is treated to performances, classes, arts and crafts, a health fair, vendor booths and an art gallery.

## BRAD KEELER & LINDA PARMAN

Multi-instrumentalist and vocalist **Brad Keeler and Linda Parman** (guitar and vocals) perform Vintage Music including early to mid-20th century blues, jazz standards, Tin Pan alley classics, as well as, bluegrass, folk and originals (composed and written in the styles listed above). Keeler and Parman are performing at the 2013 Art on the Green as a duo, but can also be seen performing in the **Brad Keeler Trio** and Level Four. More information on **Brad Keeler** or the **Brad Keeler Trio** can be found at [www.bradkeeler.com](http://www.bradkeeler.com).

## MARY LOU & THE FAMILY DION

Coeur d'Alene LOVES **Mary Lou**! She's been a familiar face in the local Arts scene for over 20 years, performing for countless events all over the area. She's a terrific pianist-vocalist who has just celebrated her 85th birthday AND her 80th year at the keyboard! Raised in Spirit Lake & St. Maries, Mary Lou has entertained all over the country as an Air Force spouse with husband (& drummer), Joe. They have 6 kids- 2 girls & 4 boys, ALL of whom are musical, and ALL of whom will be on stage with her for this year's Art on the Green. There might even be a Grand-kid or two (there are 6 of those & 2 "Greats")! The family will showcase a mix of old favorite jazzy Standards to modern Bluesy Rock, with a few Originals thrown in!

## COEURIMBA

**Coeurimba** delivers high energy action and entertainment for the whole family. The music is southern African in style and tradition, played with mallets on large wooden instruments. It's fast, kick-loose fun for all.

## THE ENSEMBLE OF THE NORTHWEST SACRED MUSIC CHORALE

This mixed vocal ensemble features 18 of the Inland Empire's most talented and versatile musicians whose repertoire includes a wide variety of music such as classical sacred, American spirituals, contemporary, pop, and vocal jazz. It is accompanied by Marietta Hardy and directed by Gaynell Coppess. For information call 208-772-3491 or on the web at [www.nwsmc.org](http://www.nwsmc.org).



## THE SAN FRANCISCO SCOTTISH FIDDLERS

**The San Francisco Scottish Fiddlers** formed in 1986 to play traditional Scottish fiddle music. We draw from the rich and enduring Scottish musical traditions that have been passed down from the Highlands, the Western Isles, the northeast of Scotland, and the Shetlands. We play contemporary Scottish tunes, as well as ones that come from the great Scottish fiddling tradition in the Cape Breton Island. We organize regular monthly meetings, jam sessions, workshops, concerts, a winter fiddling retreat, and perform for special events such as fiddle rallies and Scottish Highland Games. To learn more about us, go to [www.sfscottishfiddlers.org](http://www.sfscottishfiddlers.org).

---

---

## Artists In Action

Booth #

### CLOTH & FIBER

- 31 Helena Cernigo**, PO Box 364, Robson, BC Canada, V0G 1x0, (250) 304-3788
- 113 Judith Colvin**, 55563 Kerns Rd., St. Ignatius, MT, 59865, (406) 210-5020
- 60 Theresa Foster**, Coeur d'Alene, ID, (208) 661-0482, superfluitycreations@gmail.com
- 76 Helen Glidden**, 2608 Westfork Road, Fruitvale, ID, 83612, (208) 253-4708
- 12 Clodall Jacobson**, Spokane, WA
- 89-90 \*Janet King**, 5003 S. Baypointe Way, Coeur d'Alene, ID, 83814, (800) 673-9729
- 27 Ramona LaLond**, 3008 Bridgeway, Sausalito, CA, 94965, (707) 273-2747
- 60 Connie Larson**, Hayden, ID, divasanddragonflies.etsy.com
- 131 Alice MacDonald**, 1690 Moss, Eugene, OR, 97403, (541) 343-1551
- 65 Shelley Peters**, PO Box 382, Hamilton, MT, 59840, (406) 360-4776
- 135 Linda & Steve Ripatti**, 1233 Amesti Road, Watsonville, CA, 95076-0301, (831) 234-0782
- 140 Mary Shemeta**, PO Box 2761, Vashon Island, WA, 98070, (206) 463-0867
- 20 Aimee Spivak/JuJu Gear**, 33 E. Julie Ct., Bozeman, MT, 59718, (406) 548-5008
- 100 Mao Thao**, 2519 Olofson Dr., Missoula, MT, 59804, (406) 543-5672/(406) 207-6708
- 70 Melissa Wisen/Borsa Bella**, Wenatchee WA

### GLASS

- 61 Syed Ahmad**, 120 E. Innes St., Salisbury, NC, 28144, (704) 754-0670
- 6 Ken Frybarger**, 9916 N. Woodridge Dr., Spokane, WA, 99208, (509) 467-9996
- 15 Amy Galbavy**, 11519 N. Golden Pond Lane, Spokane, WA, 99218, (509) 710-7879
- 81 Samuel Kannall**, Spokane, WA
- 115 Ana Obermayr**, Portland, OR
- 142 Stephanie Roman-Olvera**, 21715 1st Ave W, Bothell, WA, 98021, (425) 770-6183
- 120 Mariusz & Dorota Rynkiewicz**, 12401 Alexander Rd., Everett, WA, 98204, (206) 240-8967
- 11 Jeff Tseng**, 12450 Magnolia Blvd., Unit #3962, Valley Village, CA, 91617, (818) 571-5678

### JEWELRY

- 30 Pam & Pete Amputh**, 220 Ensenada Ave., Thousand Oaks, CA, 91320, (805) 215-5110
- 93 Susie Frances Aoki**, Seaside, OR
- 130 Judy Besich**, 146 E. Llama Ln, PO Box 115, Ponderay, ID, 83852, (208) 270-0303
- 118 Michele Black**, PO Box 7308, Boise, ID, 83707, (208) 720-8576, www.esoterica-id.com
- 106 William Bockemuehl**, 220 E. Wellesley, Suite 206, Spokane, WA, 99207, (509) 489-6073
- 57 Joseph Brinton**, 5001-A S.E. Brooklyn, Portland, OR, 97206, (503) 775-3125
- 33 Spirit Anderson Bush**, McDonough, GA
- 39 Sun Chan**, 2531 So. Raymond St., Seattle, WA, 98108, (206) 832-9901(cell)
- 19 Jackie Cohen**, 6251 Wilbur Ave., Tarzana, CA, 91335-6863, (818) 609-8839
- 99 Lisa Dean-Erlander**, 4931 N. Knollwood Ave., Boise, ID, 83703, (208) 869-8955
- 138 Chris Giffin**, PO Box 722, Jefferson, OR, 97352, (503) 428-3874
- 122 Lisa Horton**, PO Box 3214, Hailey, ID, 83333, (208) 721-1798
- 75 Shelli (Ohler) Kahl**, 133 W. La Cienega Rd., San Marcos, CA, 92069, (702) 306-8478
- 55 Tamara Kelly**, 6 Bracken Pl, Bellingham, WA, 99229, (360) 305-7781
- 1 Monique Lott**, 1724 10th Pl., NE, E. Wenatchee, WA, 98802, (509) 630-2745
- 131 Alice MacDonald**, 3150 Potter, Eugene, OR, 97404, (541) 343-1551

---

---

## Artists In Action

### Booth #

- 84 Amy Mickelson**, Spokane, WA, (509) 534-6697, [www.strung.etsy.com](http://www.strung.etsy.com)
- 68 Chris O'Keef**, 3760 Hwy 93 N., Whitefish, MT, 59937, (406) 862-9043
- 48 Rachelle Pulkkila**, 150 N. Belmont, Wichita, KS, 67208, (316) 393-6801
- 116 Aline Sar**, San Francisco, CA
- 4 Chaum Spehar**, 1410 NW 27th Street, Corvallis, OR, 97330, (541) 758-7352
- 85 Catherine Stemper**, Portland, OR
- 101 Sylvia Swasey**, 5039 Siskiyou LP SE, Olympia, WA, 98501, (360) 359-0165
- 45 Sarah Thompson**, Spokane Valley, WA
- 58 Sherry Trammel-Schauls**, 312 Willems Rd., Cashmere, WA, 98815, (509) 670-3304

### LEATHER

- 111 Roxanne G. Bohman/Roxtique**, PO Box 8927, Moscow, ID, 83843, (208) 596-9222
- 121 Mark & Mary Rogers**, 215 E. Sherman Ave., Cd'A, ID, 83814, (208) 676-0818

### OTHER

- 72 Michael Barnes**, 2099 NW 3rd Ave., Hillsboro, OR, 97121, (503) 278-5030
- 112 Lupe Baze**, Cd'A, ID, (208) 660-7712
- 117 Julie Ann Bonasera**, 7815 Abercrombie Ct., Coeur d'Alene, ID, 83815, (208) 762-8762
- 110 Debi Bordoni**, 1976 Thornton Rd., Orofino, ID, 83544, (208) 435-4446
- 105 Jim & Holly Cutting**, 1135 Rogers Lake Rd., Kila, MT, 59920, (406) 752-3361
- 32 Elizabeth Dunlop**, 1850 S. Westwood, Unit 36, Mesa, AZ, (602) 448-9480
- 54 Maryann Eikens**, 8075 Parkwood Dr., Missoula, MT, 59808, (406) 396-6072
- 95 Phil Feinberg/Rockin Knives**, PO Box 4362, McCall, ID, 83638, (208) 634-8080
- 138 Chris Giffin**, PO Box 722, Jefferson, OR, 97352, (503) 428-3874
- 42 Heather Harris**, 601 Webberwood Way S, Elgin, TX, 78621, (512) 577-2787
- 28-29 Lee & Melissa Hollis**, 13210 Strahorn Rd., Hayden, ID, 83835, (208) 772-6595
- 71 Tim Kaufman**, Clarkston, WA
- 34 Scott Kirko**, 220 Shelby Ct., Helena, MT, 59602, (406) 461-0741
- 21 Derk & Mary Klein**, 1197 Sun Valley Rd., Carrywood, ID, 83809, (208) 755-8063
- 3 \*Su Landram**, 436 Valley Dr., Burbank, WA, 99323, (509) 939-7005
- 35-36 Jeff Leedy**, Boise, ID
- 2 Sandy Leibrock**, PO Box 90874, Portland, OR, 97290, (503) 760-8508
- 77 Deborah Loy**, 1216 Fairmont Loop, Cd'A, ID, 83814, (208) 765-5030
- 74 Steve Mast**, PO Box 51238, Eugene, OR, 97405, (541) 515-0273
- 26 Toby Mercer**, 316 E. Reserve Dr., Kalispell, MT, 59901, (406) 752-5275
- 9 Rik Nelson**, Liberty Lake, WA
- 66-67 Fredric Null/Null Designs in Stone**, 61149 S. Hwy 97, Bend, OR, 97702, (877) 527-6428
- 83 Ming-Chu Oye**, 534 E. Graves Ave., #A, Monterey Park, CA, 91755, (686) 375-8849
- 37 Michael Plowman**, 28810 S. Cox Rd., Colton, OR, 97017, (503) 824-4766
- 23 Michael Sage**, 5008 NE 20th Ave., Vancouver, WA, 98663, (360) 624-0411
- 49-50 Bill & Karma Simmons**, PO Box 31465, Spokane, WA, 99223, (509) 443-2218
- 47 Justin Stewart**, 216 Gerer Ln., Hamilton, MT, 59840, (406) 381-0215
- 10 Sandy Tarbox/Greencastle Soap**, 203 N. Stone, Spokane, WA, 99202, (509) 466-7223
- 91 Carrie Vielle**, Colfax, WA, [www.carrievielle.com](http://www.carrievielle.com)



---

---

## Artists In Action

### Booth #

- 82 Jan Vetter**, 22319 E. Trent, Otis Orchards, WA, 99207, (509) 768-3491
- 78 Chris Wheeler**, 6715 Seinfeld Court, Houston, TX, 77069, (206) 730-1433
- 17 Paul Wisdom**, 1403 Drury Rd., Deary, ID, 83823, (208) 301-0300
- 88 John Zimmerman**, 360 Grand Mesa Ct., Ridgway, CO 81432

### PAINTING

- 40 Ed Anderson**, 6445 Warm Springs, Boise, ID, 83716, (208) 724-6991
- 134 Coeur d'Alene Art Association**, P.O. Box 759, Hayden Lake, ID, 83835, (208) 818-9614
- 109 Dean Crouser**, 175 N.W. Chastain Ct., Gresham, OR, 97030, (503) 970-4550
- 52 \*Jo Fyfe**, S. 8017 Ramona Road, Spokane, WA, 99224, (509) 448-2802
- 5 Melissa Graves**, PO Box 3191, Hailey, ID, 83333, (208) 721-0447
- 137 Cecile Hubene**, 13124 Tamar Dr., Desert Hot Springs, CA, 92240, (760) 533-9496
- 139 Maia K. Leisz**, 82 Copper Ridge, Sagle, ID, 83860, (208) 263-2803
- 136 Jill Mayberg**, 3401 K St., Vancouver, WA, 98663, (360) 281-2656
- 16 \*Debbie McCulley**, 12104 E. Nez Perce Ln., Spokane, WA, 99206, (509) 997-3583
- 88 \*Alan McNeil**, 1578 Tamarack Lane, Troy, MT, 59935, (406) 295-5185
- 64 \*Stan Miller**, E. 3138 17th, Spokane, WA, 99223, (509) 535-5257
- 125 Oluf Nielsen**, Issaquah, WA, (425) 736-9005
- 146 LR Montgomery**, 428 E. 21st Ave., Spokane, WA, 99203, (509) 624-0261
- 144 Lynn Newell**, 2455 Moonlight Glen, Escondido, CA, 92026, (760)798-9980
- 62 Whitney Peckman**, 120 E. Innes St., Salisbury, NC, 28144, (704) 754-6771
- 148 Tai Poon**, 259 Andover Dr., Claremont, CA, 91711, (909) 896-3838
- 69 Andy Sewell**, 5299 Hwy 95 N., Viola, ID, 83872, (208) 596-3181
- 7 Toni Spencer**, Post Falls, ID
- 46 Sherry Tolman**, PO Box 17343, Fountain Hills, AZ, 85269, (360) 301-2852
- 79 Nha Vuu**, 6715 Seinfeld Ct., Houston, TX, 77069, (206) 730-1433
- 56 \*Tannea Zollinger**, Spokane, WA

### PHOTOGRAPHY

- 104 John Ashley Fine Art Photography**, PO Box 855, Kila, MT, 59920, (406) 249-6418
- 126 Siep Bueneker**, 840 Loma Drive #4, Hermosa Beach, CA, 90254, (310) 374-7778
- 128-129 Rick Canham**, 1336 SE Clatsop, Portland, OR, 97202, (503) 232-8566
- 124 Rich Caramadre**, 4880 Skycrest Cr., Salt Lake City, Utah, 84108, (801) 664-4424
- 107 Tim DePuydt Photography**, 6300 Lone Moose Ct., Florence MT, 59833, (406) 273-6361
- 73 Raquel Edwards**, PO Box 68483, Portland, OR, 97268, (503) 758-0445
- 43 \*Linda Lowry**, 1204 W. 18th Ave., Spokane, WA, 99203, (509) 456-0638
- 97-98 Jim Ludwig Photography**, 909 Michelbook Lane, Rio Vista, CA, 94571, (707) 374-1605
- 59 William Vanscoy**, Brookings, OR
- 51 \*Gay Waldman**, 315 W. 37th Ave., Spokane, WA, 99203, (509) 456-7240

### PRINTMAKING

- 14 Dennis Brady**, 1576 Box Canyon Rd., Sandpoint, ID, 83864, (208) 290-6936
- 86 Willow Rosales**, 135 E. 1st Ave #3, Colville, WA, 99114, (509) 684-6406

---

---

## Artists In Action

Booth #

### POTTERY

- 53 **Carol Ann Bauer**, PO Box 327, Freeland, WA, 98249, (360) 331-5142
- 44 **Matthew Briney**, 3210 Foothill Rd., Kalispell, MT, 59901, (406) 755-7978
- 94 **Michelle Curtis**, PO Box 4043, Brookings, OR, 97415, (541) 251-1955
- 18 **James Diem**, 4415 Hwy 35, Hood River, OR, 97031, (541) 354-9966
- 24-25 **Jeff Harris**, 10925 S. Meadow Rd., Medical Lake, WA, 99022, (509) 299-7592
- 145 **T. Mulvaney Pottery**, 9711 9th St., NE, Lake Stevens, WA, 98258, (425) 344-7553
- 114 **Eleanor Murphey**, 64660 Boones Borough Dr., Bend, OR, 97701, (541) 388-2636
- 147 **Patrick Noe**, 4412 Simpson St., West Linn, OR, 97068, (503) 329-7041
- 149 **Tom Radca**, 15216 Grove Rd., Port Washington, OH, 43837, (740) 502 4374 C/(740) 498-4303 H
- 150 **Larry Richmond**, 3100 Alabama, Bellingham, WA, 98229, (360) 734-3698
- 143 **Lance Roberts**, 705 N. 50th #305, Seattle, WA, 98103, (253) 232-9443
- 141 **Martin Schwartz**, PO Box 874, Blue Lake, CA, 95525, (707) 668-5338
- 41 **Wray Sheen**, 5205 36th Ave., SW, Seattle, WA, 98126, (206) 937-1994
- 63 **Ed & Diane Swick/Klickitat Pottery**, PO Box 848, White Salmon, WA, 98672, (509) 493-4456
- 92 **Rabun Thompson**, PO Box 6703, Portland, OR, 97228, (503) 781-7695
- 133 **Jim Williams**, 7470 Shepard Mesa Rd., Carpinteria, CA, 93013, (805)
- 24-25 **Denny Young Memorial Booth**

### WOOD

- 96 **Jeffrey Bengston**, 8428 N. Fenwick Ave #23, Portland, OR, 97220, (503) 481-3868
- 132 **Bret A. Bloodgood**, Coeur d'Alene, ID
- 127 **Ian Herdell/Sierra Woodcraft**, 117 B NW Staats, Bend, OR, 97701, (949) 291-5311
- 38 **Gregory King/My Wood Tie**, 8776 Helms "E", Rancho Cucamonga, CA, 91730, (909) 466-0199
- 8 **David & Carolyn Levy**, PO Box 542, Davis, CA, 95617, (530) 758-6624
- 123 **Niels Madsen/Mad Wood Turnery**, 13806 SE Mitchell St., Portland, OR, 97236, (503) 761-3878
- 22 **Greg Moffatt**, PO Box 383, Hayden, ID, 83835, (208) 964-6778
- 119 **Bryan Parks**, 1430 Willamette St., #53, Eugene, OR, 97401, (916) 760-4188
- 13 **Walter Wogee**, PO Box 310, Skyforest, CA, 92385, (909) 336-1065

### YOUTH

- 108 **Arthur Bassaly**, Hayden, ID
- 87 **Kylee Olgesby**, Post Falls, ID
- 103 **Kristy Ford**, Coeur d'Alene, ID

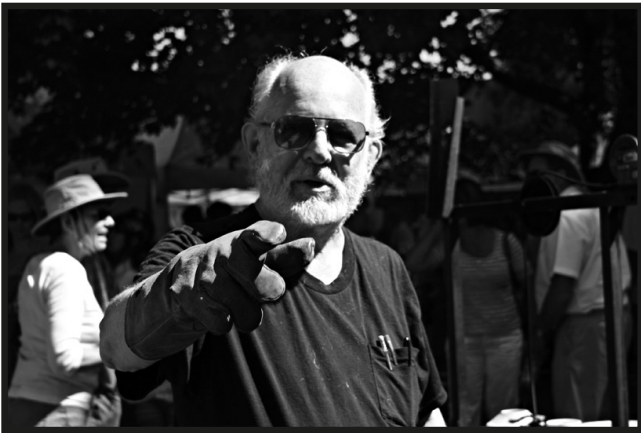
\*=Juried Show Artists

---

---

## DENNIS (DENNY) YOUNG

Dennis Young, or Denny to his friends, was born in 1939 in California though he moved often throughout his childhood and considered Montana his true home. Denny was a very successful and accomplished



architect who designed many schools, hospitals and other commercial properties in the Inland Northwest and was best known for his solar architecture. Some notable buildings Denny designed include Spokane's West Central Community Center, several Raleigh Hills centers across the state, the renovation of the Patsy Clark mansion into a restaurant in the 1980's and the more recent renovation design of the Montvale Hotel. While he drew much success from architecture, his true love was pottery. It was during his college years at Montana State University that Denny took his first pottery course, and from that point on, pottery became a near daily ritual for the remainder

of his life. While throwing and firing pottery were a true love for Denny, he had an even greater love for teaching pottery to others and his students numbered in the hundreds. Most recently he taught at The Clay Connection in Spokane, though he previously taught classes in a number of places including many years with the Spokane YWCA. It was at the YWCA that he taught along with Jeff Harris, a close friend and fellow potter, who has also been a regular exhibitor at the Art on the Green. The two have been firing Raku Pottery together at Art on the Green for the last couple decades, and Jeff is setting up one last booth of Denny's work at this year's Art on the Green in order to honor an old friend. Denny was a charter member of the very first Art on the Green, and has been the only original exhibitor to continue to participate in the fair through its 45 years of existence. Though Denny's presence is greatly missed, fortunately the over 6000 pots he threw in his lifetime continue to grace the homes of those who appreciate his art. Denny, Raku and AOTG are an annual tradition. His detailed analysis and description of the finer qualities of herbivore poop, "moose poop" in particular served to entertain and enlighten all those fortunate enough to meet Denny and observe the Raku event he orchestrated at AOTG. His fine baritone voice would often accompany this event as he demonstrated the resonant quality of various vessel forms. He loved pottery, Raku, music, good conversation, beer and AOTG and looked forward to the first weekend in August all year long. Denny will be missed at Art on the Green but his presence will be felt whenever the smoke from Raku rises over the park. Denny has been with AOTG since the beginning, most of those years he demonstrated Raku. I (Jeff Harris) was blessed to have shared at least 30 of those years with him and intend to honor his legacy by demonstrating Raku at AOTG for many more. Denny is survived by his three children, David Young of Boise, Idaho, Brittney Gannon of Seattle, Washington and Nicholeas Young of Owensboro, Kentucky.



---

---

# THE JURIED SHOW

Artists from throughout the country enter their artwork, to be juried by a panel of professional artists, for exhibition at Art on the Green.

**JUDGES --- KAREN KAISER, JEFF HARRIS**

*Prize Money: Over \$5,000 in purchase prizes and awards*

## **PURCHASE AWARDS 2013**

**President's Award:** North Idaho College (Donated to the permanent collection)

### **Category 1 - Painting, Photography**

**Terry Abell**, Bayview, ID – Slot Canyon, Arches National Park; The Arch At Canyon Land

**Mary Bakken**, Batavia, IL – Duncan Gardens

**Diane Barron**, Worley, ID – Springtime Saunter; October-Lake Coeur d'Alene

**Marilyn Bashore**, Coeur d'Alene, ID – Reflective

**Yvonne Benzinger**, Coeur d'Alene, ID – Family Vacation

**Mareldine Blake**, Coeur d'Alene, ID – The Country In Autumn; White Lilacs

**Johnny Booe**y, Spokane Valley, WA – Peek-A-Boo Mallard

**Lisa Marie Brown**, Spokane -- Pillars to the Sky; Winter Aspen Leaves

**Jessica Bryant**, Coeur d'Alene, ID – Lake Coeur d'Alene from Signal Point; Corner Door

**Chris Burgeson**, Harrison, ID – Wood River Willows; Spring Runoff

**Jan Clizer**, Coeur d'Alene, ID – Vig Highlander; Memento Mori

**Pat Coyne**, Newman Lake, WA – Pride

**Larry Dongilli**, Spokane, WA – Time Warp

**Michael W. Dotson**, Mullan, ID – The Day Before Spring

**Daniel Eastwood**, Coeur d'Alene, ID – Torn Mountain; Sunflower Shine

**\*Jo Fyfe**, Spokane, WA – On Their Trail; Crowded Out

**Sharon Gregg**, Hayden, ID – A Place on the Coeur d'Alene River

**Joyce Gruenewald**, Spokane, WA – Summer's Child; Mt. Rainer Autumn

**Richard Heinzen**, Bayview, ID – Up in the Clouds; Forgotten

**Debbie Highbanks**, Loon Lake, WA – Main Street Parade; The Piper

**Joshua M. Hust**, Palouse, WA – The Bridge; Horizon

**Lynne Jacobsen**, Anderson Island – South of Rosalia; That June on the Palouse

**Greg Johnston**, Rathdrum, ID – Magnolia Flower; Vintage Car by Pond

**Diane Klements**, Post Falls, ID – Lopez Island 1

**Lorraine Krank**, Otis Orchard, WA – Joe Collins-Mountaineer

**\*Su Landram**, Burbank, CA – Calf Creek Falls; Balance Rock

**Christine Marie Larsen**, Seattle, WA – Cougar Bay; Lake Cd'A Fish

**\*Linda Lowry**, Spokane, WA – Calendimaggio, Assisi, Italy

**Jimmy Magnuson**, Coeur d'Alene, ID – Patch; Humility

**Robert Mallgren**, Colbert, WA – Still-Life with Onions

**Marsha Marcuson**, Spokane, WA – Northwest River Bank

**Carol McCarty**, Coeur d'Alene, ID – The Pursuit

**\*Debbie McCulley**, Spokane, WA – Somethings Fishy; Whoos' House

**Jerry McGinness**, Hayden, ID – Trout Water; Morning Shadows

**\*Alan McNiel**, Troy, MT – Big Sky Country; North Beach-San Francisco

---

---

# JURIED SHOW

**Debbie McNeil**, Troy, MT – Alopercurus Aequalis-Foxtail

\***Stan Miller**, Spokane, WA – Back Road Waters; Cape Cod Morning Fog

**Fabian Napsky**, Spokane, WA – By the River; Deep Forest Reflection

**Earl Parker**, Twin Lakes, ID – Market Day

**Suzanne Reh-Faraca**, Post Falls, ID – Black Swan Lake; A Day in the Clouds

**Carol Stacey**, Coeur d'Alene, ID – Windows #1

**Sharon Tabor**, Billings, MT – Montana Sheep Wagon

\***Gay Waldman**, Spokane, WA – Woven Cabbage 1; Entwine 1

**Marilyn Walsh**, Coeur d'Alene, ID – Country Iris

**Dawn Wass**, Hayden, ID – Reflecting on the Calm Water; Perfect Weather for a Snail

**Olivia Waterman**, Spokane, WA – Thinking of Painting; Three Seas of Calm

**Bob Wilson**, Post Falls, ID – Blue Stallion

**Wendy Winkler**, Seattle, WA – Sunflowers; Bouquet

**Dian Zahner**, Spokane, WA – Deep; Kona Black Beach Turtles

\***Tanea Zollinger**, Spokane WA – Tired; The Yearling

## Category 2 – 3-D

**Heather Bailey**, Athol, ID – Sculpted Cosmotology

**Pat Boyd**, Spokane, WA – Untitled/Doll Head; Untitled

**Michael Ford Dunton**, Castle Valley, UT – Man with Hammer; Woman

**Susan Fairfax**, Coeur d'Alene, ID – Adrift; Questions

**Rhea Giffin**, Coeur d'Alene, ID – Rock Garden Recess; Pumpkin

**Dawn Hawks**, Cusick, WA – Under the Sea; Fancy That!

**Scott Hill**, Spokane Valley, WA – Contemplating Nature

**Josh Hust**, Palouse, WA – Hedgehog Pot

\***Janet King**, Coeur d'Alene, ID – Leaves

**Judy Minter**, Rathdrum, ID – Dreaming in Color; Laced with Wonder

**Bernadette Loibl**, Spirit Lake, ID – Caballo

**Yasuko Mayhew**, Spokane, WA – Ocean Jewel; Race to the Sea

**Ginger Oakes**, Spokane, WA – Old Growth; Family Roots

**Bob Wilson**, Post Falls, ID – Steampunk Ray Gun; Robot Car

**Karen Youngblood**, Rathdrum, ID – 124 Carmel Sugar Road

**Dian Zahner**, Spokane, WA – Silk Cells; Element of Life: Fire

\*=Booth Artist

---

---

## JEAN DODGE

CCA wishes to pay tribute to the passing of one of our oldest members Jean Dodge. She was an active contributor in so many ways from tallying artist's sales to making pesto for the chicken booth. A great volunteer with a wonderful sense of humor, she will be missed.

---

## PATRICK FLAMMIA DRAWING INSTITUTE

CCA and Friends established the Patrick Flammia Drawing Institute to provide opportunities for artists of



all ages to have drawing classes with guest artists. Additional plans for future institutes are being developed, and suggestions are welcome. Call Allen Dodge, Suzy Gerber, Ann Porter Brown or Sue Flammia. One of the founders of CCA and Art on the Green, Patrick Flammia loved to draw, and his drawings and paintings are in numerous collections. Please visit the sculpture "Reflections" by the rose garden, near the Juried Show, which has a sketchbook honoring Patrick included as part of the bench, situated by the stainless steel "waves." "Reflections" was created by artists Harold Balazs and Allen Dodge, and presented to North Idaho College by CCA and Friends.

## PLAYSPACE

PlaySpace is located at the Harding Family Center at 15th & Indiana. Master Artist Harold Balazs of Spokane along with many volunteers have worked on this project, including mosaic designer Kim Emerson. They have transformed a simple pine grove into an inviting, artistic, fanciful art endeavor.

## ART ON THE GREEN HISTORY BOOK

This history book tells the forty year story of the hundreds of volunteers who have made Art on the Green this grand celebration of art that generates tens of thousands of dollars each year, all of which is returned to our community to support and encourage the arts. It was written by Fay Wright, with layout and design by Gayle Hughes

## CORNER GALLERY BOSWELL HALL

Presented by the Citizens' Council for the Arts

A Special Exhibit

**Celebrating 45 years of Art on the Green and featuring Seven Local Artists**

*This exhibit is sponsored by Art on the Green/Citizens' Council for the Arts, in cooperation with the North Idaho College Art Department*

**Kathy Gale Patsy Parsons Wes Hanson Clancey Pleasants Mary Maxam Danny Snow Theresa McHugh**

**Opens August 12/Close September 19**

**Hours 10:00 a.m. to 4:00 p.m. M-F**

**A closing reception on September 19, 2013, 5:00 p.m. to 7:00 p.m.**

