

CASE II
AGRICULTURE

MAGNUM™ SERIES TRACTORS
175 – 275 PTO HP



**EVERY SINGLE DAY, YOU DEMAND MORE.
MORE FROM THE LAND. MORE FROM YOURSELF.
MORE FROM YOUR EQUIPMENT. WHICH IS WHY WE
ALSO DEMAND MORE. MORE POWERFUL ENGINES.
MORE PRODUCTIVITY-BOOSTING FEATURES. MORE
APPROACHABLE AND KNOWLEDGEABLE CASE IH
EXPERTS. AND WE DO ALL THIS TO BETTER SERVE
YOU AND THE NEEDS OF YOUR OPERATION.**

**MAGNUM TRACTORS HAVE PROVIDED INDUSTRY
LEADING POWER AND INNOVATION TO NORTH
AMERICAN FARM OPERATIONS SINCE 1987. FOR
TWO DECADES MAGNUM HAS STOOD FOR BEST-
IN-CLASS CAB COMFORT, FUEL EFFICIENT POWER
GROWTH, AND INCREASED PROFIT-PER-ACRE.
DEMAND MORE PERFORMANCE AND EFFICIENCY
IN YOUR OPERATION - DEMAND THE BEST WITH
CASE IH MAGNUM TRACTORS.**



FOR THOSE WHO DEMAND MORE



LEADING THE INDUSTRY	4
CAB ENVIRONMENT	6
CONTROLS	8
LIGHTING	9
ENGINE	10
TRANSMISSION	12
HITCH, HYDRAULICS & PTO	14
FRONT AXLE OPTIONS	16
ADVANCED FARMING SYSTEMS	18
SERVICEABILITY	20
OUR SYSTEMS APPROACH	22
SPECIFICATIONS	23

Unparalleled Power.

Power growth of up to 41 hp provides extra pulling power when you need it most.

Best Turning Radius.

Sculpted front end allows for best-in-class 16-foot (4.9m) turning radius with typical row-crop tires.

Productive Hitch & Hydraulics.

Hydraulic flow capability up to 78 gpm (297 lpm) and greater hitch lift capacity handles the most demanding implements.

Field Proven Transmission.

18x4 powershift transmission with standard auto-shift has more than two decades of proven performance and durability in the field.



Spacious Cab Comfort.

Largest, quietest cab in the industry with unsurpassed visibility and ergonomic armrest controls for a truly comfortable work environment.

Convenient Maintenance.

Ground-level central location for fluid checks and other service tasks means easy maintenance and less time.

► Magnum tractors have been proudly built at the **Racine, Wisconsin Manufacturing plant** since the original 7100 Series in 1987.



Advanced Farming Systems.

Integrated technology like CAN-bus electronics and the AFS AccuGuide Auto-Guidance System allow less fatigue, more accurate fieldwork and lower input costs.

LEADING THE INDUSTRY

EFFICIENT POWER. PRODUCTIVE COMFORT.

SINCE THE FIRST 7100 SERIES WAS LAUNCHED IN 1987, CASE IH MAGNUM TRACTORS HAVE CONTINUED TO SET INDUSTRY BENCHMARKS FOR CAB COMFORT, EASE OF OPERATION, AND POWER TO THE GROUND.

Power and innovation have been Magnum series trademarks. From their durable engine and powershift transmission, to the most roomy and comfortable cab in the industry, Magnum tractors have continued to raise the bar on productivity.



Model	Engine	PTO HP
215	8.3 L	175 hp
245	8.3 L	200 hp
275	9 L	225 hp
305	9 L	255 hp
335	9 L	275 hp

Power Mirrors (optional) let you adjust rear views at the touch of a button.

Automatic temperature control lets you preselect the perfect temperature without the need for constant adjustment, for continuous comfort throughout the day and night.

Narrow steering console for excellent visibility to the ground and your crop.

▼ **A-Post instrument cluster with optional performance monitor** tracks important functions and data for convenient at-a-glance monitoring.



CAB ENVIRONMENT

CAB OPTIONS

Feature Description	Deluxe	Luxury
Seats		
Heated Seat with adjustable heat settings	●	●
Deluxe Cloth Seat	●	
Luxury Red Leather Seat		●
Instructional Seat, cloth	OPTION	
Instructional Seat, grey leather		●
Windows & Visibility		
Front Intermittent Wiper/Washer	●	●
Rear Wiper/Washer	●	●
Side Wiper/Washer	OPTION	OPTION
Front Sun Shade	●	●
Side Sun Shade	OPTION	OPTION
Rear Sun Shade	OPTION	OPTION
Tinted Rear Window		●
Swing out rear window	●	●
Instruments & Controls		
Horn	●	●
Self-Canceling Turn Signal	●	●
Adjustable fore / aft right-hand armrest	●	●
Foot throttle	OPTION	OPTION
Tilt/telescoping steering wheel	●	●
Leather wrapped steering wheel and throttle handle		●
AFS Pro 600 color monitor	OPTION	OPTION
Factory AFS capable	●	●
ISO 11783 capable	●	●
Business band radio antenna cable	OPTION	OPTION
Cab Comfort & Convenience		
Automatic Temperature Control	●	●
Power Outlets (6)	●	●
Storage righthand headliner	●	●
Cargo Net	●	●
Coat hook	●	●
Dual cup holder	●	●
Interior mirror	●	●
Dome light	●	●
Map light	●	●
Tool Box	●	●
Rubber floormat, black	●	●
Carpeted floormat		●

MORE VISIBILITY. MORE COMFORT.

INDUSTRY'S LARGEST CAB PROVIDES VISIBILITY, COMFORT AND PRODUCTIVITY.

Input from top North American producers contributed to the design of the spacious and comfortable Magnum cab. At 109 cubic feet (3.1 m³) of cab volume and 68 square feet (6.3m²) of glass, you won't feel cramped or crowded during long days in the field. The Surveyor cab delivers plenty of legroom and storage space, plus 360-degree panoramic visibility.

► **Optima seat upgrade options** include the instructional seat, red leather bucket seat, and new Positive Response Suspension system that automatically adjusts the seat shock absorber up to 500 times per second for smooth ride over the roughest terrain.

► Both the **deluxe and luxury Optima seats** are fully adjustable in every way, including ride firmness, lumbar support, float isolators, swivel, back-rest angle, left armrest height and tilt – even the standard seat heating system is adjustable.



CONTROLS



▲ The **AFS Pro 600 color display** (optional) makes tractor performance information even more accessible. This customizable display allows you to decide exactly which tractor operating information and AFS AccuGuide controls you want to see and record based on your individual operation.

▼ **Electronic End-of-Row** is easy to use and allows you to record a combined sequence of up/down shifting, engine speed, hydraulic remote valve control, hitch raise/lower, MFD on/off and differential lock on/off. Perform all your end-of-row functions automatically by pressing just one switch.



EFFORTLESS CONTROL. LESS FATIGUE.

ERGONOMIC ARMREST CONTROLS AND CORNER-POST INFORMATION AT-A-GLANCE BOOST YOUR PRODUCTIVITY DAY AFTER DAY.

▼ **Right-hand armrest controls** are integrated to move with the seat as it is adjusted. Your arm rests on a padded cushion with easy access to most controls including the integrated gear/throttle lever, ergonomically designed for long days in the field.



► Optional **performance monitor** can display percent of power usage, wheel slip, fuel consumption, remaining fuel, distance traveled, acres covered, hydraulic flow settings and much more.

1. Integrated throttle and gear selection
2. Remote hydraulic control levers
3. Remote function controls
4. Hitch up/down switch
5. Electronic End-of-Row switch
6. Hitch position control
7. MFD control switch
8. Diff lock switch
9. 5th remote (optional)
10. Hitch load control
11. Slip limit control switch (optional)
12. Auto shift switch
13. Depth control/laser scraper switch
14. PTO control switch
15. Hydraulic flow controls
16. Hydraulic valve timer
17. Electronic End-of-Row play/record switch



◀ The **instrument cluster** located in the right-hand cab corner 'A-post' is positioned in your natural field of vision and displays important status information at-a-glance.

▼ Optional **High Intensity Discharge** work lighting can be installed between the front headlights, as well as in the rear fender area, to deliver ultimate night visibility.



SUPERIOR LIGHTING. 24/7 PRODUCTIVITY.

LIGHT UP YOUR FIELDS WITH MAGNUM'S
360-DEGREE VISIBILITY AFTER DARK.

With excellent visibility all around the tractor, you can operate with greater confidence as well as added safety. Through the panoramic cab glass, you have clear sight lines to the tires, crop, and implement that help you get the most out of your tractor in a day's time. When late hours are what it takes to get the job done, the Magnum tractor is well-equipped to provide you with that same level of superior visibility, even after dark. Take your pick of lighting packages including standard halogen along with optional High-Intensity-Discharge (HID) lighting technology.

◀ **Add one or two rotating beacons** mounted on the roof cap as an option for extra visibility on roadways.

◀ For maximum illumination, opt for the **360° work lamp package** that includes 3 front HID lamps, 2 rear fender HIDs, plus 2 roof side-mounted halogens, as well as helpful egress lighting for exiting the tractor in the dark.

High pressure common rail electronic fuel injection system on all models delivers the **best power growth in the industry.**

Cross-flow head design maximizes efficiency by positioning the intake and exhaust manifolds on opposite sides of the engine, allowing cooler air to be utilized.

Sturdy surround frame and iso-mounted engine independent of the transmission help reduce vibration and stress to components, extending service life with greater reliability.

Four valves per cylinder improve fuel economy and increase power.

Wastegate turbocharging improves low-end lugging ability, while maintaining critical air-to-fuel ratios.



Model	PTO HP	Power Growth	Peak PTO Power	Displacement
215	175	38	213	8.3L
245	200	40	240	8.3L
275	225	40	265	9.0L
305	255	41	296	9.0L
335	275	36	311	9.0L

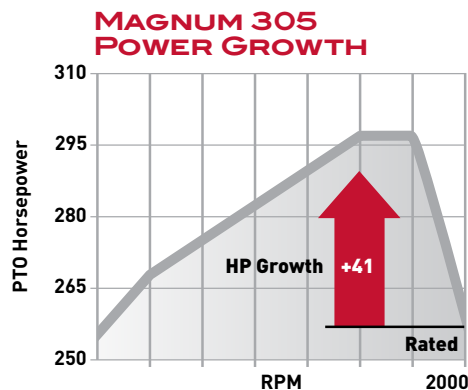


All Magnum tractors are **bio-diesel ready up to 20%** with approved Case IH maintenance practices.

FUEL EFFICIENCY. POWER GROWTH.

INDUSTRY-LEADING POWER GROWTH UP TO 41 HP FOR UNMATCHED PERFORMANCE IN TOUGH PULLS.

The 9L (543 cu. in.) Case IH engine in the Magnum 275, 305 and 335 models deliver up to 51 percent PTO torque rise and up to 41 hp PTO power growth. The 8.3L (505 cu. in.) Case IH engine in the Magnum 215 and 245 models deliver up to 53 percent PTO torque rise and up to 40 PTO hp power growth. Run larger implements and work deeper for greater productivity in your operation with the Magnum tractors' legendary power reserves.



◀ **The Magnum 305's power** growth capability turns PTO power of 255 hp at the rated 2000 RPM into 296 hp when needed, a power reserve that you'll appreciate under full load.



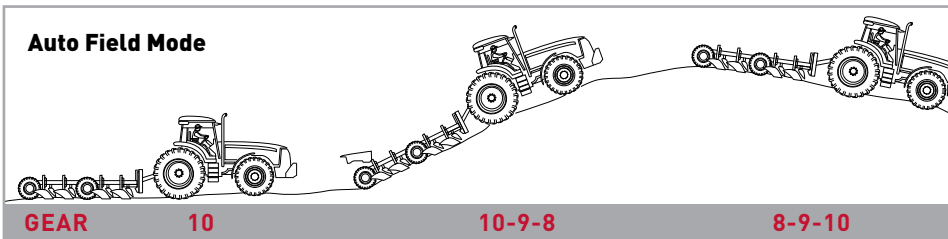
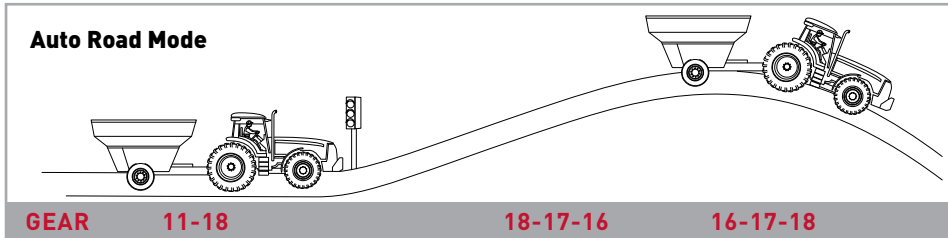
◀ **Constant Engine RPM switches** (optional) allow you to choose your desired maximum engine speed for applications such as planting, spraying and tillage. Like the cruise control in your pickup, this feature can save you fuel when set at an economical 1800 RPM — the same speed that provides peak horsepower in tough conditions.



▼ **Auto Road Mode** provides the convenience of auto-shift at transport speeds. The operator uses throttle-lever only to speed up or slow down without having to select gears, avoiding the effort of multiple shifts in traffic or hilly conditions.

▼ **Auto Field Mode** provides auto-shift in the field working gears. Maintains engine speed by up-shifting or down-shifting as load changes. Through hills and varying soil conditions, auto-shift ensures peak fuel efficiency.

AUTO SHIFT



SOLID EFFICIENCY. AUTO SHIFTS.

FOR RAW PULLING EFFICIENCY, IT'S TOUGH TO BEAT THE PROVEN MAGNUM FULL POWERSHIFT TRANSMISSION WITH STANDARD AUTOMATIC SHIFT.

Magnum's standard 18-speed full powershift transmission is a modern relative of the transmission that originated in the original Magnum 7100 series, known for its long, dependable service life. Today's Magnum 18x4 powershift provides unprecedented shift quality thanks to "pulse width modulation," a form of electronic control that allows smooth shifts and less fatigue at the end of long days on the grain cart.

Eight working speeds in the critical working range of 3 to 8 mph (4.9 to 12.9 kph) with a 14 percent speed change between gears let you operate at the most productive speed for the implement. Plus, you can program the tractor to start up in any gear you choose (1 through 12) for quicker start-ups in any application.

For slow-speed specialty situations such as potato or vegetable crops, an optional shift through creeper transmission with 5 forward and 2 reverse speeds is available on all models. The shift through creeper allows the operator to engage or disengage creep at the end of the rows without stopping. Simply shift in or out of creep gears on the go.

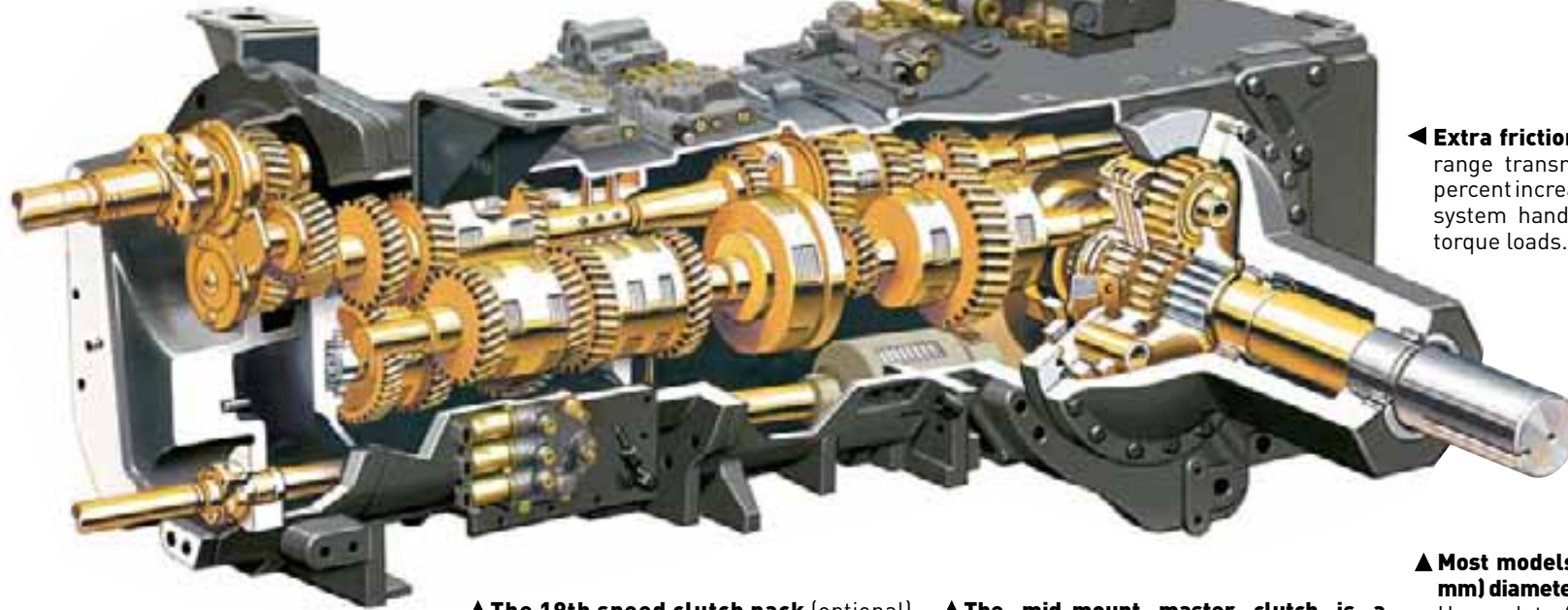
► **Integrated gear/throttle lever** provides the ultimate ergonomic speed control.



▼ **The simple countershaft design** provides years of reliable service.

▼ **Transmission shafts** ride above the fluid level and are pressure lubricated from within for the most efficient possible transfer of power to the ground.

TRANSMISSION



◀ **Extra friction plates** on the speed and range transmission along with the 14 percent increase in clutch capacity let the system handle the higher horsepower torque loads.

▲ **Helical-cut gears** increase tooth contact area, reduce noise, and extend life.

▲ **The 19th speed clutch pack** (optional) reduces engine speed during transport for improved fuel economy. Another 19th gear option allows you to reach 30 mph (50 kph) for faster transport times.

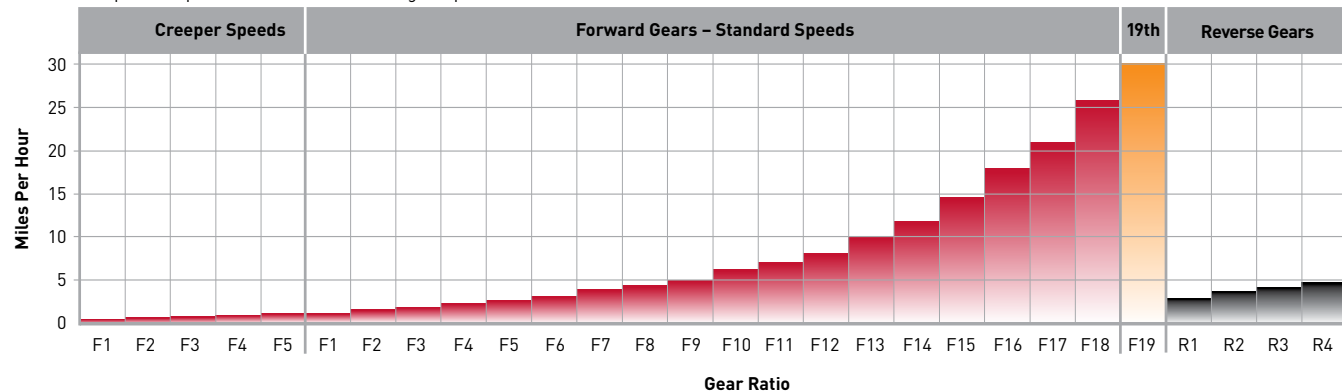
▲ **The mid-mount master clutch is a multiplate wet clutch**, designed to protect the transmission and provide feathering capabilities for easier implement hook-up.

▲ **Most models come with a 4-inch (102 mm) diameter rear bar axle** as standard. Heavy-duty 4.5 inch (115 mm) bar axle is standard on the Magnum 335 and optional on smaller models.

▶ **Optional 19th Gear** can be ordered as either an 'economy' gear or as part of the 30 mph (50 kph) package. Ordered as an economy gear, the 19th gear is limited to 1800 RPM achieving fuel economy during transport. When ordered in combination with the other required 30-mph options, the 19th gear operates at full RPM for faster road operation.

GROUND SPEED

The Magnum powershift transmission provides 8 speeds in the working range, with a 14% speed change between gears. All speeds depicted below are at rated engine rpm.



▼ **High-capacity hitch options** are available to handle heavy mounted Cat. IVN implements with up to 18,900 lbs. (8572 kg) lift capacity.

▼ **New Category IVN/III hitch** handles heavier implements such as mounted stacker-bar planters.

▼ **New Category IV heavy duty drawbar with 2-inch hitch pin** is available for vertical loads up to 11,000 lbs.

▼ **Power-beyond kit** (optional) provides hydraulic power supply, return, load sense and case drain for easy hook-ups such as pull-type sprayers.



HITCH, HYDRAULICS & PTO

HIGH FLOW. STRONG HITCH. PTO POWER.


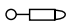
HIGH-CAPACITY PRESSURE FLOW COMPENSATING (PFC) HYDRAULICS, HEAVY-DUTY HITCH AND DRAWBAR, AND NUMEROUS PTO OPTIONS.

Hydraulic flow, hitch lift and PTO capabilities needed to handle today's larger implements such as planters, air seeders and grain carts are no problem for the Magnum's trusted PFC hydraulic system and multiple hitch, PTO and drawbar options.

Heavy-Duty Hitch & Drawbar with standard electronic draft control provide up to 18,900 lbs. (8572 kg) lift capacity through the full range, giving you the versatility to move up to wider, heavier implements. Slip Limit Control with radar lets you adjust maximum slip according to your application. Hitch Ride Control reduces bouncing during transport with mounted implements. Heavy-duty drawbar option handles vertical loads of 11,000 lbs. to handle large toolbars, wagons and grain carts.

Advanced Hydraulics rely on a PFC design with up to five electro-hydraulic remote valves. It ensures high capacity, quick responses, and has flexibility to simultaneously perform several functions without sacrificing performance. Five-function remote lever controls can be easily set from the righthand control console — orbital motor, loader, full function, no float and lock. Programmable valve timer lets you set engagement times right from the cab.

Choose from **three different PTO options** to handle whatever implement you're pulling. Magnum's PTO system is hydraulically activated and electronically controlled for smooth modulation and component protection. The PTO clutch is positioned on the top shaft for quieter operation. The PTO shaft can be rotated for easy coupling of implements.


168.6
AUX TIMER 

Timer 1	24 sec
Timer 2	24 sec
Timer 3	20 sec
Timer 4	20 sec
Timer 5	20 sec

A EDIT
SEL B

HYDRAULIC FLOW

Model	215-305	335
Standard Flow (GPM)	44	46
Optional High-Flow	59	62
Optional Twin-Flow	75	78



▲ **The hydraulically adjustable hitch top-link option** offers flexible control with the ability to adjust the pitch of implements on the go from inside the cab.

◀ Each **hydraulic remote timer** can be set individually using the optional Performance Monitor for added fuel efficiency.



▲ **Convenient rear-fender-mounted electric hitch control.** A switch for the hydraulic top link is also included when equipped with this option.

▼ **Heavy-duty front suspended axle** with new improved seals stands up to the toughest shock loads.

▼ **Industry's first factory installed front duals** provide a myriad of benefits including fuel efficiency, less compaction and greater productivity.



FRONT AXLE OPTIONS

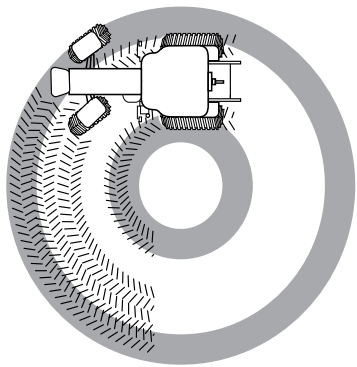
TIGHT TURNS. POWER TO THE GROUND.

MULTIPLE FRONT AXLE OPTIONS PROVIDE INDUSTRY-BEST END-OF-ROW TURNS AND SUPERIOR TRACTION THROUGH THE FIELD.

The Magnum's industry leading turning ability stems from its sculpted hood that allows more clearance for the front tires. Magnum tractors turn around in just 16 ft. (4.9 m) with standard 380 / 85R34 front tires, which is 2 feet better than the closest in-class competitor. Even with 380 / 80R38 tires, the turning radius is 18.5 ft. (5.6 m). This allows you to turn back into 12 rows on 30-inch spacing with all axle configurations on true 60-inch tread settings, even with front duals.

The Magnum's optional suspended MFD axle improves ride quality, tractor stability and traction efficiency without sacrificing tread setting and maneuverability, unlike competitive designs. It provides constant power to the ground by maintaining ground contact pressure in uneven terrain. A new double-acting cylinder design provides superior performance in rough field conditions.

When the tractor is equipped with the factory-installed front duals option, you can place more ballast up front to minimize weight transfer to the rear. The rear tires spread out over the soil, providing better flotation to improve root development and better traction to improve performance under load. With front duals, you benefit from greater productivity plus higher yield potential. Plus, traction and stability improve, so you'll experience less slippage, a more efficient transfer of power, and better fuel efficiency.



Sculpted front end allows Magnum tractors to make the tightest headland turns in the industry at 16-feet with typical row crop tires.



▲ The **suspended beam front axle design** provides all the advantages of an independent link suspension with less complexity – fewer moving parts and simple controls. With 4.4-inch (112 mm) travel and 6-degree oscillation, it hydraulically handles bumps and dips to smooth out your ride.





Magnum Tractors take the growing popularity of automatic guidance to the next level by offering **AFS AccuGuide** as a complete factory installed option.



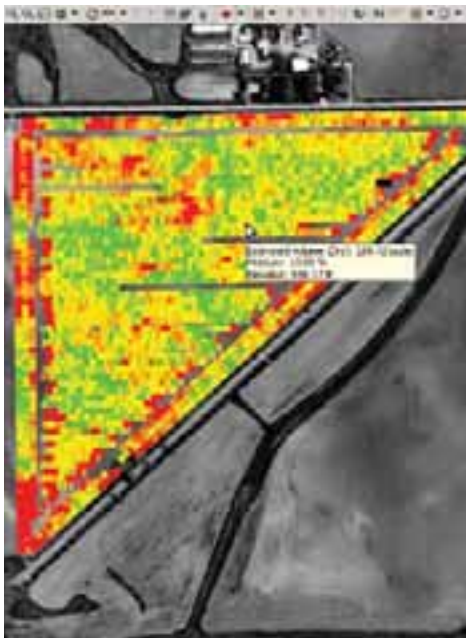
ADVANCED FARMING SYSTEMS

PRECISE. PRODUCTIVE. PORTABLE.

AFS ACCUGUIDE™ AUTO-GUIDANCE SYSTEM ELIMINATES THE NEED TO STEER IN OPEN FIELDS, EXCLUDING HEAD LANDS. THE PORTABLE AFS PRO 600 DISPLAY, NAVIGATION II CONTROLLER, AND AFS 252 RECEIVER MOVE EASILY AMONG EQUIPMENT.

PRECISION COMPONENTS MATCH YOUR OPERATION.

Case IH Advanced Farming Systems (AFS) equipment fully integrates cutting-edge precision farming components for every operation. With features like sub-inch repeatable auto-guidance accuracy, yield and moisture mapping, as applied and prescription planting, the AFS system helps you maximize productivity for optimal crop yields.

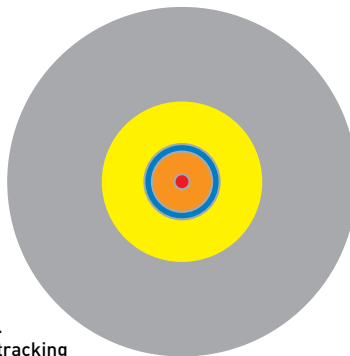


AFS DESKTOP SOFTWARE

AFS desktop software enables you to layer yield and moisture maps on top of aerial photographs along with precision farming information including: Trimble®, Ag Leader Technology® and GreenStar® proprietary systems. Customizable charts, graphs and layered maps can be derived for analysis of variety/hybrid, plant population, and soil topography. Dimensions and field-to-field yields can also be used for year-over-year comparisons.

HOW ACCURATE IS DGPS & RTK GPS?

- Case IH RTK +/- 1 in.
 - 1 in. repeatable
 - 1 in. pass to pass
- OmniSTAR* HP +/- 4 in.
 - 2-4 in. pass to pass
- OmniSTAR XP +/- 8 in.
 - 3-5 in. pass to pass
- WAAS +/- 3 ft.
 - 6-12 in. pass to pass
- Autonomous GPS 15-45 ft.
 - Hiking, boating, vehicle tracking



The AFS AccuGuide System:

- Saves input costs by reducing skips and overlaps.
- Eliminates the guesswork of row swath spacing to ensure each swath is identical, reducing tight headland turns and overlaps.
- Maintains perfectly straight and repeatable rows with RTK accuracy.
- Allows data storage for later analysis and benchmarking to maximize input investments.
- Controls traffic patterns and decreases compaction resulting in higher yields and larger profits.
- Reduces operator stress and fatigue.

* Trimble, Ag Leader Technology, GreenStar and OmniSTAR are registered trademarks of their respective companies.

▼ **The sculpted hood** provides full access to the engine, air cleaner, radiator and hydraulic oil cooler

▼ With the hood open, the **swing-out radiator is completely accessible** for easy cleaning and maintenance.

▼ **The engine air filter is accessible** from ground level making regular cleaning and periodic replacement quick and easy.

▼ **Refueling is an easier** chore when done from the ground level.



CONVENIENT, TIME-SAVING ACCESS.

MAGNUM SERIES TRACTORS ALLOW EASY ACCESS FOR KEY MAINTENANCE TASKS TO SAVE TIME ON PREVENTIVE MAINTENANCE AND MINIMIZE OPERATING COSTS.

Magnum Series tractors simplify maintenance with an extended 300-hour engine oil change interval and easy service access to keep your machine in top running condition. From the easy-opening hood, convenient service steps and ground-level central service points, the Magnum was designed to provide unobstructed accessibility. Whether you're monitoring key tractor performance data from inside the cab or checking filters and fluids from ground level, Magnum design makes it easy to maintain your equipment and protect your investment.

► **The optional performance instrumentation** displays service reminders for engine oil and filter, engine air filter, battery, coolant flush, transmission oil and filter, fuel filter, coolant filter and hydraulic flow. In addition to helping you keep track of routine service and maintenance requirements, the monitor also detects critically high temperatures or low oil pressures and, if necessary, automatically shuts down the engine to prevent damage.



SERVICEABILITY

A **standard removable toolbox** is located on the righthand side of the cab.

The **batteries** are conveniently located on the righthand side of the tractor. Removing thumb screw covers provides quick access to the batteries without the use of tools.

Your Case IH dealer's service technician can perform **full system diagnostics on site** with a laptop computer, ensuring your Magnum tractor performs in top operating condition. ▼



OUR SYSTEMS APPROACH

INTEGRATING EQUIPMENT FINANCING AND SERVICE INTO ONE EXCEPTIONAL PACKAGE.

CASE IH DEALERS HELP YOU MATCH THE RIGHT EQUIPMENT TO YOUR OPERATION FOR MAXIMUM PRODUCTIVITY AND OPTIMUM ROI.

Turn to your experienced Case IH specialists when it comes to purchasing the equipment you need for an optimum return on your investment. Highly trained Case IH dealers know how to match the right Magnum tractor horsepower and capabilities with the precise tools and implements needed to efficiently complete your farming operations, from row crop applications to livestock work and other chores around the farm.

Your Case IH dealer can provide assistance in selecting the right equipment to meet your operation's productivity and financial goals. The Case IH systems approach helps pair tractors with compatible implements, such as planters, cultivators or disks, to achieve peak performance from both pieces of equipment. Your dealer will recommend the ideal option package, with proper tires, weighting and ballast, to help your Magnum tractor work most efficiently for your specific requirements. Plus, he or she will consult with you in analyzing results, field by field.

You can also rest assured your Case IH equipment will hold its value through trade-in time. And with the Advanced Farming Systems (AFS), you will be able to operate more efficiently, avoiding overlaps and getting more income per acre. Case IH equipment and your dealer's value-added service are the right choices for those who demand more.



CNH CAPITAL FINANCING SOLUTIONS

For those who demand more from a financial services provider, CNH Capital has the right solutions for you. With more than 50 years experience in the agricultural industry, we understand your unique needs and have developed a wide range of financial products and services to support your business.

CNH Capital offers competitive equipment financing with flexible payments that can

be timed to your cash flow. Operating and finance leases are also attractive options that allow you to reduce up-front payments and conserve capital, while benefiting from the latest in equipment technology. For other business financing needs, choose from a variety of credit card programs designed specifically for the agricultural business. CNH Capital can even help you finance crop-input products, land rental.

PARTS AND SERVICE EXPERTISE

You can always count on your Case IH dealer for the professional service and advice necessary to keep your equipment running, season after season.

In addition to helping you find the right product solutions for your operation, your Case IH dealer offers a vast array of parts, services and equipment protection plans—all backed by expert advice and skilled, factory-trained service professionals who can help you before, during and after the sale. Your Case IH dealer carries the complete line of genuine Case IH parts and components, along with full-service maintenance programs and industry-leading warranties that can help keep your equipment running smoothly.

With the help of your Case IH dealer, you can always find the right combination of equipment, parts and service, as well as the financing support you need to be more productive and successful.

Now you can identify the Case IH parts you need online

- Visit www.caseih.com/na
- Click on Search for Parts under Parts & Service
- Enter your model number or product name
- View a parts list and diagram
- Build a list of the parts you need
- Contact your Case IH dealer to order parts



SPECIFICATIONS

SPECIFICATIONS	MAGNUM 215	MAGNUM 245	MAGNUM 275	MAGNUM 305	MAGNUM 335
ENGINE					
Rated PTO	175 hp [131 kW]	200 hp [149 kW]	225 hp [168 kW]	255 hp [190 kW]	275 hp [205 kW]
Rated full load	2000 rpm	2000 rpm	2000 rpm	2000 rpm	2100 rpm
Peak PTO torque @1400 rpm	1,284 ft.-lb. [1740 Nm]	1,477 ft.-lb. [2002 Nm]	1,642 ft.-lb. [2226 Nm]	1,777 ft.-lb. [2409 Nm]	1,841 ft.-lb. [2496 Nm] @ 1500 rpm
PTO Power growth	38 hp [28 kW]	40 hp [29 kW]	40 hp [29 kW]	41 hp [30 kW]	36 hp [26 kW]
Peak PTO Power	213 hp [158 kW]	240 hp [178 kW]	265 hp [197 kW]	296 hp [220 kW]	311 hp [231 kW]
PTO torque rise †	52%	53%	51%	46 %	47%
Cylinder/ displacement	6/505 cu. in. [8.3 L]	6/505 cu. in. [8.3 L]	6/543 cu. in. [9 L]	6/543 cu. in. [9 L]	6/543 cu. in. [9 L]
Number of valves	24	24	24	24	24
Aspiration	Wastegate turbocharged/air-air	Wastegate turbocharged/air-air	Wastegate turbocharged/air-air	Wastegate turbocharged/air-air	Wastegate turbocharged/air-air
ELECTRICAL					
Alternator Standard/Optional	150 amp/175 amp	150 amp/175 amp	150 amp/175 amp	150 amp/175 amp	150 amp/175 amp
Battery capacity (1 battery)	2 batteries/2,000 cca	2 batteries/2,000 cca	2 batteries/2,000 cca	2 batteries/2,000 cca	2 batteries/2,000 cca
FULL POWERSHIFT TRANSMISSION					
18-Speed [18Fx4R]	Standard	Standard	Standard	Standard	Standard
19-Speed [19Fx4R] w/19th Economy Gear [25 mph/40 kph]	Optional	Optional	Optional	Optional	Optional
19-Speed [19Fx4R] w/19th Fast Gear [30 mph/50 kph]	Optional	Optional	Optional	Optional	NA
23-Speed [23Fx6R] w/ Shift Through Creeper	Optional	Optional	Optional	Optional	Optional
Electronic Pulse-Width Modulated Shift	Standard	Standard	Standard	Standard	Standard
Power Shuttle	Standard	Standard	Standard	Standard	Standard
AutoShift with Field and Road Modes	Standard	Standard	Standard	Standard	Standard
PTO Standard	1000; 1.75 in. [44 mm], 20 splines	1000; 1.75 in. [44 mm], 20 splines	1000; 1.75 in. [44 mm], 20 splines	1000; 1.75 in. [44 mm], 20 splines	1000; 1.75 in. [44 mm], 20 splines
PTO Optional Multi-shafts	540/1000; 1.375 in. [35 mm] and 1000; 1.75 in [44 mm]	540/1000; 1.375 in. [35 mm] and 1000; 1.75 in [44 mm]	540/1000; 1.375 in. [35 mm] and 1000; 1.75 in [44 mm]	540/1000; 1.375 in. [35 mm] and 1000; 1.75 in [44 mm]	540/1000; 1.375 in. [35 mm] and 1000; 1.75 in [44 mm]
PTO Optional Reversible Shaft	1000; 1.75 in. [44 mm]/1000; 1.375 in. [35 mm]	1000; 1.75 in. [44 mm]/1000; 1.375 in. [35 mm]	1000; 1.75 in. [44 mm]/1000; 1.375 in. [35 mm]	1000; 1.75 in. [44 mm]/1000; 1.375 in. [35 mm]	1000; 1.75 in. [44 mm]/1000; 1.375 in. [35 mm]
AXLES					
Standard/Optional rear diameter	4 in./4.5 in. [102/115 mm]	4 in./4.5 in. [102/115 mm]	4 in./4.5 in. [102/115 mm]	4 in./4.5 in. [102/115 mm]	4.5 in. [115 mm]
Rear axle length	120 in. [3050 mm]	120 in. [3050 mm]	120 in. [3050 mm]	120 in. [3050 mm]	120 in. [3050 mm]
MFD Axle	10-bolt Hub Standard	10-bolt Hub Standard	12-bolt Hub Standard	12-bolt Hub Standard	12-bolt Hub w/Diff Lock Standard
Suspended front axle	Optional	Optional	Optional	Optional	NA
MFD tread adjustability	60-88 in. [1524-2235 mm]	60-88 in. [1524-2235 mm]	60-88 in. [1524-2235 mm]	60-88 in. [1524-2235 mm]	60-88 in. [1524-2235 mm]
MFD Duals [Requires 12-bolt Hub]	Optional	Optional	Optional	Optional	Optional
Wheelbase [MFD]	118.3 in. [3005 mm]	118.3 in. [3005 mm]	118.3 in. [3005 mm]	118.3 in. [3005 mm]	118.3 in. [3005 mm]
HYDRAULICS					
Hydraulic Type	PFC/parallel priority	PFC/parallel priority	PFC/parallel priority	PFC/parallel priority	PFC/parallel priority
Remotes Standard/Optional	3/5	3/5	3/5	3/5	3/5
Hydraulic Pump Flow Standard/Optional	44/59 gpm [166/223 lpm]	44/59 gpm [166/223 lpm]	44/59 gpm [166/223 lpm]	44/59 gpm [166/223 lpm]	46/62 gpm [175/236 lpm]
TwinFlow Pump Option, Total Flow	75 gpm [282 lpm]	75 gpm [282 lpm]	75 gpm [282 lpm]	75 gpm [282 lpm]	78 gpm [297 lpm]
3-Point Hitch Category [Optional]	Cat III/IIIN [IVN/IIII]	Cat III/IIIN [IVN/IIII]	Cat III/IIIN [IVN/IIII]	Cat III/IIIN [IVN/IIII]	Cat IVN/IIII
Standard Hitch Lift Capacity – Cat. III/IIIN	14,070 lb. [6382 kg]	14,070 lb. [6382 kg]	15,183 lb. [6885 kg]	16,375 lb. [7421 kg]	NA
Optional Hitch Lift Capacity – Cat. III/IIIN	16,375 lb. [7421 kg]	16,375 lb. [7421 kg]	17,931 lb. [8132 kg]	17,931 lb. [8132 kg]	NA
Optional Hitch Lift Capacity – Cat. IVN/IIII	16,500 lb. [7484 kg]†	18,900 lb. [8572 kg]†	18,900 lb. [8572 kg]†	18,900 lb. [8572 kg]†	18,900 lb. [8572 kg]†
CAPACITIES					
Fuel Tank	180 gal. [682 L]	180 gal. [682 L]	180 gal. [682 L]	180 gal. [682 L]	180 gal. [682 L]
Engine Oil with Filter	22 U.S. qt. [21 L]	22 U.S. qt. [21 L]	22 U.S. qt. [21 L]	22 U.S. qt. [21 L]	22 U.S. qt. [21 L]
Cooling System	24 U.S. qt. [22.7 L]	24 U.S. qt. [22.7 L]	26 U.S. qt. [24.6 L]	26 U.S. qt. [24.6 L]	26 U.S. qt. [24.6 L]
Hydraulic Fluid	45.5 gal [172 L]	45.5 gal [172 L]	45.5 gal [172 L]	45.5 gal [172 L]	45.5 gal [172 L]
CAB					
Volume [Size]	109.5 cu. ft. [3.1 m ³]	109.5 cu. ft. [3.1 m ³]	109.5 cu. ft. [3.1 m ³]	109.5 cu. ft. [3.1 m ³]	109.5 cu. ft. [3.1 m ³]
Glass	68.5 sq. ft. [6.4 m ²]	68.5 sq. ft. [6.4 m ²]	68.5 sq. ft. [6.4 m ²]	68.5 sq. ft. [6.4 m ²]	68.5 sq. ft. [6.4 m ²]
Sound Level	70.6 dBA	70.6 dBA	70.6 dBA	70.6 dBA	70.6 dBA
SHIPPING WEIGHT					
With Standard MFD Axle*	20,100 lb. [9136 kg]	20,100 lb. [9136 kg]	20,630 lb. [9377 kg]	20,630 lb. [9377 kg]	21,350 lb. [9684 kg]
With Suspended Front Axle*	20,900 lb. [9499 kg]	20,900 lb. [9499 kg]	21,430 lb. [9740 kg]	21,430 lb. [9740 kg]	NA
Maximum Operating Weight	26,500 lb. [12 000 kg]	26,500 lb. [12 000 kg]	32,500 lb. [14 770 kg]	32,500 lb. [14 770 kg]	37,125 lb. [16 839 kg]
Height to Top of Cab**	128.5 in. [3265 mm]	128.5 in. [3265 mm]	128.5 in. [3265 mm]	128.5 in. [3265 mm]	128.5 in. [3265 mm]

*With 380/85R34 front and 480/80R46 rear on Magnum 215 and Magnum 245; with 420/90R30 front and 520/85R42 rear on Magnum 275, Magnum 305 and Magnum 335.

** With 480/80R46 rear tires. †Manufacturer estimate.



WWW.CASEIH.COM

SAFETY NEVER HURTS!™ Always read the Operator's Manual before operating any equipment. Inspect equipment before using it, and be sure it is operating properly. Follow the product safety signs, and use any safety features provided.

Case IH is a registered trademark of CNH America LLC. Any trademarks referred to herein, in association with goods and/or services of companies other than CNH America LLC, are the property of those respective companies.

CNH America LLC reserves the right to make improvements in design and changes in specifications at any time without notice and without incurring any obligation to install them on units previously sold. Specifications, descriptions and illustrative material herein are as accurate as known at time of publication, but are subject to change without notice. Availability of some models and equipment builds varies according to the country in which the equipment is used.

