

Microsoft Dynamics®

Management Reporter Integration Guide for Microsoft Dynamics® SL

February 2017

Find updates to this documentation at the following location:

<http://www.microsoft.com/en-us/download/details.aspx?id=5916>



Microsoft Dynamics is a line of integrated, adaptable business management solutions that enables you and your people to make business decisions with greater confidence. Microsoft Dynamics works like and with familiar Microsoft software, automating and streamlining financial, customer relationship and supply chain processes in a way that helps you drive business success.

U.S. and Canada Toll Free 1-888-477-7989
Worldwide +1-701-281-6500

www.microsoft.com/dynamics

Information in this document, including URL and other Internet Web site references, is subject to change without notice. Unless otherwise noted, the companies, organizations, products, domain names, e-mail addresses, logos, people, places, and events depicted in examples herein are fictitious. No association with any real company, organization, product, domain name, e-mail address, logo, person, place, or event is intended or should be inferred. Complying with all applicable copyright laws is the responsibility of the user. Without limiting the rights under copyright, no part of this document may be reproduced, stored in or introduced into a retrieval system, or transmitted in any form or by any means (electronic, mechanical, photocopying, recording, or otherwise), or for any purpose, without the express written permission of Microsoft Corporation. Microsoft may have patents, patent applications, trademarks, copyrights, or other intellectual property rights covering subject matter in this document. Except as expressly provided in any written license agreement from Microsoft, the furnishing of this document does not give you any license to these patents, trademarks, copyrights, or other intellectual property.

© 2017 Microsoft Corporation. All rights reserved.

Microsoft, Active Directory, Management Reporter, Microsoft Dynamics, the Microsoft Dynamics logo, Windows, Windows Server, and SQL Server are trademarks of the Microsoft group of companies.

All other trademarks are property of their respective owners.

Contents

Introduction	4
Upgrade Considerations.....	5
Microsoft SQL Server Version Support Change	5
New Ability to Limit the Integrated Companies	5
ERP Data Validation	5
New Ability to Limit the Data Integration Timeframe	5
System Database Method of Integration	6
The Account Category and Account Type Attributes	6
Drill to Dynamics.....	7
Use of Wildcard Characters in Filters	7
Filtering on Dimensions	7
Exporting and Converting Report Definitions	7
Prompting for Credentials	7
The Microsoft Dynamics SL Legacy Data Provider	7
Upgrading to Management Reporter 2012	8
System setup	11
System Prerequisites	11
Enable SQL Server Change Tracking	11
User Account Requirements	12
Installing and Configuring the Data Integration	13
Configure the Data Integration.....	13
Enable the Data Mart Integration and Import Companies.....	16
Remove an Integration.....	19
Specify the Default Company	20
Appendix	21
Available Attributes	21
Account Type	21
Transaction Type	21
Reporting When the Last Two Periods End on the Same Date.....	22
Data Mart Displays Only Attributes Associated with Transactions	23
Supported Attributes.....	23
Drill to Dynamics from the Web Report Viewer	23

Introduction

Management Reporter 2012 for Microsoft Dynamics® ERP uses a data mart adapter to integrate data between Microsoft Dynamics® SL and Management Reporter. You can view and work with data from Microsoft Dynamics SL to create financial reports in Management Reporter 2012 without affecting the original data in the ERP database.

Note:

- The Microsoft Dynamics SL data mart adapter replaces the Microsoft Dynamics SL legacy data provider with Management Reporter 2012 RU4 and later versions. The Microsoft Dynamics SL legacy data provider remains compatible with Management Reporter 2012 RU5 and later versions. Earlier versions of Management Reporter must be updated to Management Reporter 2012.
- This version of the Microsoft Dynamics SL data mart adapter is compatible with Microsoft Dynamics SL 2011 and later versions.
- The Microsoft Dynamics SL data mart adapter supports one system database per integration and lets you specify a starting fiscal year limit. This option improves report generation in Management Reporter 2012.
- The Microsoft Dynamics SL legacy data provider included with Management Reporter 2012 RU5 and later versions lets users run existing reports and also remove existing integrations. We recommend that you remove existing Microsoft Dynamics SL legacy data provider integrations and configure a Microsoft Dynamics SL data mart integration with Management Reporter 2012 RU5 and later versions.
- New Microsoft Dynamics SL legacy data provider integrations are not supported beginning with Management Reporter 2012 CU13.

Upgrade Considerations

When you upgrade to the Microsoft Dynamics SL data mart adapter, you may notice several differences. This section identifies these areas and explains the differences and reasoning behind them.

Microsoft SQL Server Version Support Change

Beginning with Management Reporter 2012 Cumulative Update 15 (CU15), the SQL server that is hosting the Management Reporter databases must be on Microsoft SQL Server 2012 RTM or higher. SQL versions prior to Microsoft SQL Server 2012 RTM are no longer supported and must be upgraded. For further information, see [System requirements for Management Reporter](#).

New Ability to Limit the Integrated Companies

With Management Reporter 2012 Cumulative Update 11 (CU11) and later versions, you can limit the companies that will be integrated to the data mart. Select the new **Exclude from MR** check box (grid view) or the **Excluded from Management Reporter Integration** check box (form view) in the *Company Maintenance* (98.280.00) screen in Microsoft Dynamics SL to exclude a company from being integrated with Management Reporter. To see this check box, you must install hotfix 34694 for Microsoft Dynamics SL 2015 or earlier versions (Microsoft Dynamics SL 2015 CU1 contains this correction). Download the hotfix, if applicable, from the following Knowledge Base article: <https://mbs.microsoft.com/knowledgebase/KBDisplay.aspx?scid=kb;EN-US;3022697>

Choose the version of the hotfix that corresponds to the version of Microsoft Dynamics SL that you have installed.

You must do this *before* you enable the integration.

ERP Data Validation

For data mart integrations of Management Reporter, the Configuration Console lets you validate Microsoft Dynamics SL data for inconsistent or invalid data. The validation checks for the inconsistent and invalid data within the ERP which cause problems with Management Reporter. If the validation finds problems, an error in the integration log has you run additional scripts located on the Microsoft Knowledgebase at <http://go.microsoft.com/fwlink/?LinkId=398540>.

New Ability to Limit the Data Integration Timeframe

With Management Reporter 2012 Cumulative Update 8 (CU8) and later versions, you can limit the amount of financial data from Microsoft Dynamics SL that is integrated with the Management Reporter data mart. You can limit the starting fiscal year for a single Microsoft Dynamics SL application database or for all Microsoft Dynamics SL databases.

You must do this before you enable the integration.

To limit a single Microsoft Dynamics SL application database, follow these steps:

1. Log on to SQL Server Management Studio, open a query window, and then select the database.
2. Paste the following into the query window.

```
IF EXISTS (SELECT * FROM sysobjects WHERE id =
OBJECT_ID('dbo.Get_MR_FiscalYear_Start'))
    DROP Procedure dbo.Get_MR_FiscalYear_Start
GO
Create Proc Get_MR_FiscalYear_Start as
    Select '2009'
GO
Grant Execute on [Get_MR_FiscalYear_Start] to [E8F575915A2E4897A517779C0DD7CE] GO
```
3. Change the year shown to the start fiscal year limit that you want to specify. For example, if you specify 2009, the Management Reporter reports will include data from fiscal year 2009 and later.
4. Run the SQL statement.

To limit all Microsoft Dynamics SL databases, follow these steps:

1. Locate the MRServiceHost.settings.config file, and then edit the file in Notepad. The default location of the file is <Program Files>\Microsoft Dynamics ERP\Management Reporter\2.1\Server\Services.
Note: You must install the Management Reporter Server component first.
2. Add a line that resembles the following.

```
<add key="IntegrationFiscalYearStart" value="2009" />
```
3. Change the year shown to the start fiscal year limit that you want to specify. For example, if you specify 2009, the Management Reporter reports will include data from fiscal year 2009 and later.
4. Save the changes to the MRServiceHost.settings.config file.

System Database Method of Integration

With Management Reporter 2012 Cumulative Update 7 (CU7) and later versions, all the prior data mart integrations associated with a Microsoft Dynamics SL installation are unsupported. You must remove your existing application database based integrations and reconfigure them by using the method that integrates to the Microsoft Dynamics SL system database. Prior integrations were based on the Microsoft Dynamics SL application database.

When integrating a Microsoft Dynamics SL system database, all companies in that system database are integrated, and are available for reporting.

The Account Category and Account Type Attributes

These attributes are built into Management Reporter and are duplicates of the Acct_Cat and AcctType attributes.

Drill to Dynamics

When drilling into Microsoft Dynamics SL the Microsoft Dynamics SL *Account/Subaccount Detail Inquiry* (01.303.00) screen is loaded based on the context of the report. With the provider the data passed to the screen used a period range specific to the report data. The adapter implementation uses the Management Reporter Data Mart Adapter, and that adapter passes data representing the range of fiscal periods from 01 to the report's base Fiscal Period. You may see different data loaded into the screen when you use Management Reporter 2012 RU5 and later versions and the data mart adapter.

When you use Microsoft Dynamics SL 2015 with Management Reporter 2012, you must install hotfix 34515 (Microsoft Dynamics SL 2015 CU1 contains this correction). Download the hotfix from the following Knowledge Base article:

<https://mbs.microsoft.com/knowledgebase/KBDisplay.aspx?scid=kb;EN-US;3026634>

Use of Wildcard Characters in Filters

The legacy data provider used Accounts and other ID type fields that had space padding on the end. For example, a filter like 1???? found values like "1030 " in addition to "10301." The adapter does not use space padding. A filter like 1???? will not find "1030" but will find "10301." This is also true for filtering on IDs like Ledger ID and Dimension Data, not just the Account ID.

Filtering on Dimensions

If any Microsoft Dynamics SL subaccounts are set up in *Flexkey Definition* (21.320.00) to allow for blank-filled segments, when you filter on that dimension in Management Reporter, you must use the word "blank" instead of spaces. For example, the subaccount used in a transaction is 00-000- -00000. If you want to use Management Reporter to filter on this third segment to locate this transaction, you can either type "blank" or select "blank" from the possible values list. The other possible values in this list contain the valid values for the segment specified in *Flexkey Table Maintenance* (21.330.00) and any values that were used in transactions.

Exporting and Converting Report Definitions

We recommend that you export your Report Definitions and their related Row Definitions, Column Definitions, Reporting Tree Definitions, and Dimension Value Sets before you start the upgrade process to Management Reporter 2012 RU5 and later versions.

The Report Definitions and their related Row Definitions that were created by using the legacy data provider must be converted in order to work with the new data mart adapter. Follow the instructions in the following Knowledge Base article:

Management Reporter 2012 report may return no data after you change to Dynamics SL Data Mart Provider <https://mbs.microsoft.com/knowledgebase/KBDisplay.aspx?scid=kb;EN-US;2807488>

Prompting for Credentials

You may notice that you are less frequently prompted for credentials when you change companies.

The Microsoft Dynamics SL Legacy Data Provider

If you currently integrate with Microsoft Dynamics SL by using the legacy data provider, we recommend that you create a new integration by using the data mart adapter. New Microsoft Dynamics SL legacy data provider integrations are not supported beginning with Management Reporter 2012 CU13.

Upgrading to Management Reporter 2012

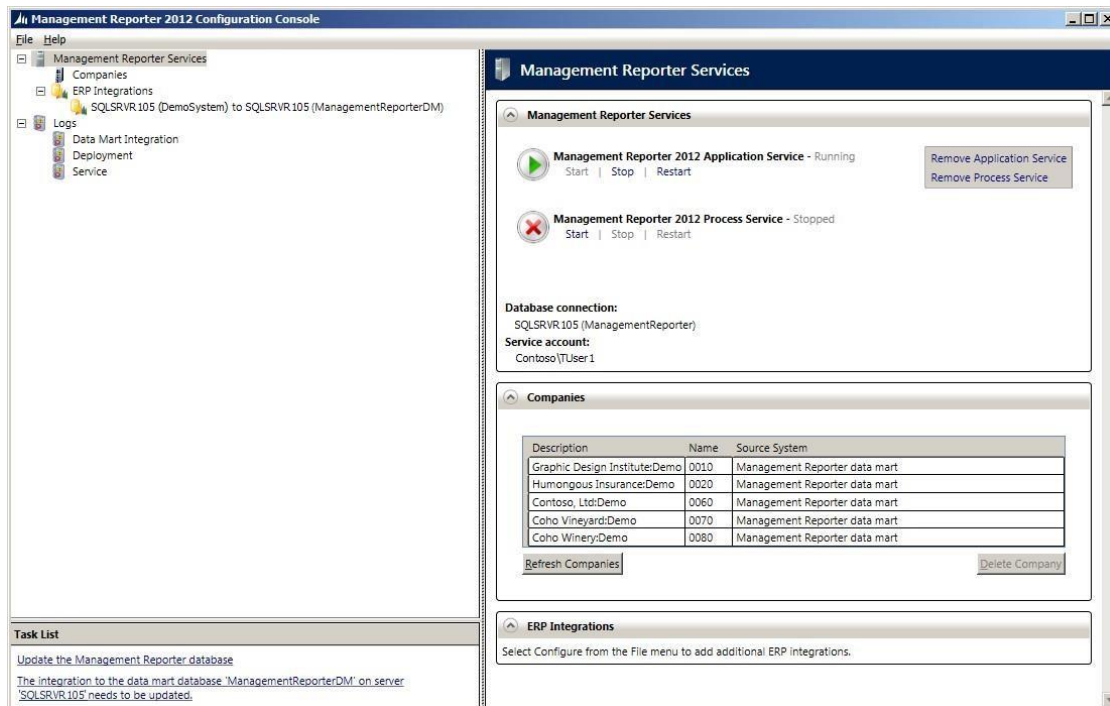
When the upgrade to Management Reporter 2012 is complete, you see the following prompt to run the Configuration Console.



1. Select **Start the Configuration Console to continue**, and then click **Finish**.

Note: The "Unable to connect to the Management Reporter application service. Make sure the service is started. See the service log for details." message may incorrectly appear. Click **OK** to continue with the upgrade.

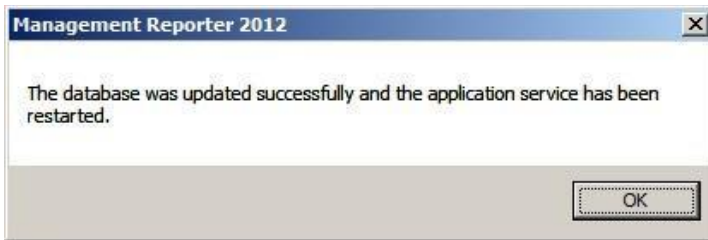
The *Management Reporter 2012 Configuration Console* appears.



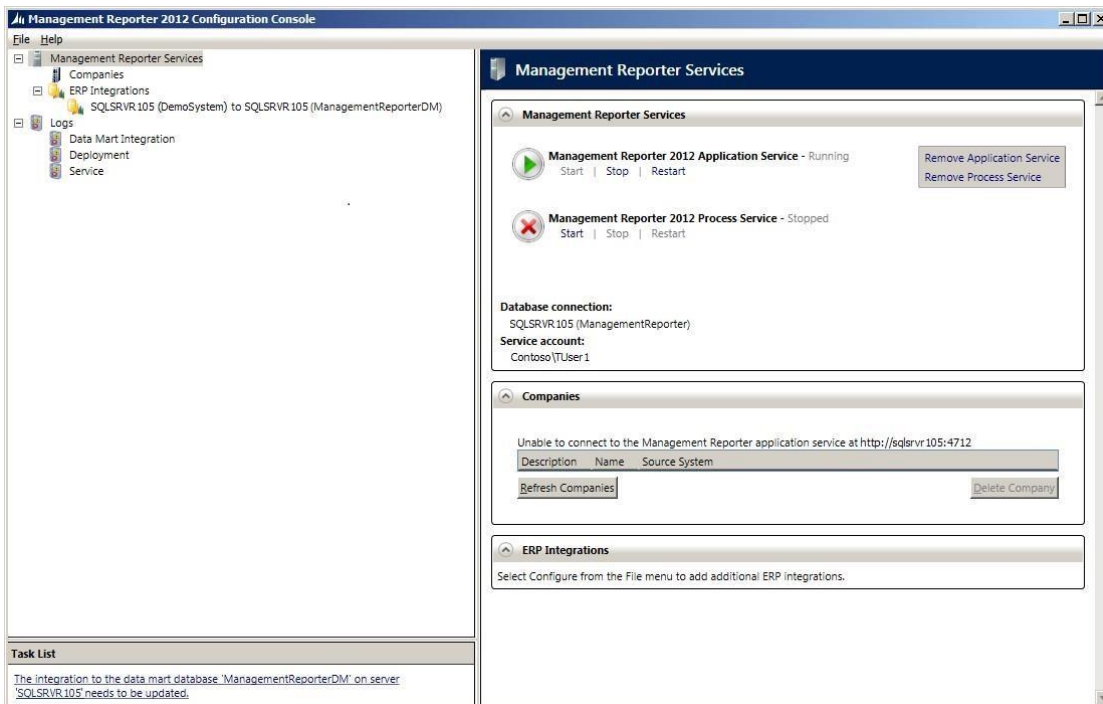
- In the **Task List** pane, click the **Update the Management Reporter database** link, and then answer the prompts for credentials to run the update. For more information about credentials, see "User Account Requirements" on page 10.

Note: The **Task List** may incorrectly display the "Unable to connect to the application service to retrieve configured ERP migrations. Click here to try again." even when you see that the application service is running. You can ignore this message and continue with these steps.

When the process is complete, the following confirmation message appears.



- Click **OK**.
The **Task List** changes.



- If your existing integration is a data mart integration, click the **The integration to the data mart database 'datamartdatabasename' on server 'sqlservername' needs to be updated** link in the **Task List** pane.
- Enter the credentials for SQL Server Change Tracking, and then click **OK**. For more information, see "Enable SQL Server Change Tracking" on page 10.
- Answer the prompts for credentials to run the Database Update and click Update. For more information about credentials, see "User Account Requirements" on page 10.
- Click **OK** to the message "The database was updated successfully."

-
8. If your existing integration is a data mart integration that was integrated to an application database in a previous version of Management Reporter or you want to switch from a legacy data provider integration to a data mart integration, you must remove the existing integrations. See the steps in the "Remove an Integration" topic on page 18. Then configure the data mart integration. See the steps in the "Configure the Data Integration" topic on page 11.

Note: If you have multiple integrations for different companies from the same Microsoft Dynamics SL system database, each integration must be removed. All companies from the same Microsoft Dynamics SL system database will be integrated into one new data mart database when the integration is reconfigured.

9. Start the Management Reporter 2012 Process Service.
10. Close the Management Reporter 2012 Configuration Console window.

System setup

Before you configure the Microsoft Dynamics SL data mart adapter, your system must meet the minimum requirements for Management Reporter 2012. For more information, see [System requirements for Management Reporter](#). Additional prerequisites are listed here.

System Prerequisites

The following prerequisites must be met before the data mart adapter can be installed on your system:

Management Reporter server components

The Management Reporter application service or process service must be installed on the same computer(s) where the Microsoft Dynamics SL data mart adapter will be installed. To install these components, see the [Management Reporter installation guide](#).

Enable SQL Server Change Tracking

Management Reporter 2012 RU5 and later versions use SQL Server Change Tracking to make sure that all transactions are integrated from Microsoft Dynamics SL to the Management Reporter data mart. SQL Server Change tracking is turned on with a default retention setting of three days. If the Management Reporter data mart integration is disabled for more than three days while transactions are posted in Microsoft Dynamics SL, you should reset your data mart to make sure no data is missed.

During the upgrade process, the Configuration Console enables SQL Server Change Tracking. You might be prompted to provide credentials that have sufficient permissions to enable SQL Server Change Tracking, such as a user who has a role of db_owner or a system administrator.

Note:

- The "ReportUser" SQL Login account is changed to include the View Change Tracking permission to read the change tracking tables in Microsoft Dynamics SL.
For more information about SQL Server Change Tracking, see the following MSDN articles:
- "How to: Use SQL Server Change Tracking" at <http://go.microsoft.com/fwlink/p/?LinkId=294714>
- "Change Tracking" at <http://go.microsoft.com/fwlink/p/?LinkId=294715>.
- During the upgrade process, if SQL Server Change Tracking was currently not enabled, the Configuration Console resets the data mart for Microsoft Dynamics SL and performs the initial integration again.
- When you add a new company to an already integrated Microsoft Dynamics SL system database, you must reconfigure Change Tracking. In the Configuration Console for Management Reporter, highlight the integration, and then click the **Reconfigure Change Tracking** link.

User Account Requirements

The user account that is used during installation for the data mart adapter must:

Application	Permissions required
Microsoft Dynamics SL	<ul style="list-style-type: none">• Have an active user account in Microsoft Dynamics SL.• Have Active Directory domain credentials (user ID and password) to log on to Microsoft Dynamics SL.
Management Reporter	<ul style="list-style-type: none">• Be a user assigned to the Administrator role.• Have an Active Directory domain account user ID and password.

You must set up user account permissions in Microsoft Dynamics SL before you configure Management Reporter services. When you configure the Management Reporter services, you must make sure that the account specified in the Log On properties for the service has sufficient access to the Microsoft Dynamics SL databases. For Windows Authenticated Microsoft Dynamics SL databases, set up a Microsoft Dynamics SL user who is associated with the Active Directory domain account that is used by the services. For SQL Authenticated databases use a domain account that has a SQL login already associated with it on the SQL Server that is hosting the Microsoft Dynamics SL databases.

When you start Management Reporter 2012, you are prompted to log on to an existing company. Active Directory domain credentials are required. The provider and data mart adapter use these credentials to connect to Microsoft Dynamics SL databases. For more information, see "How to create a domain account in Active Directory" on MSDN (<http://go.microsoft.com/fwlink/p/?LinkId=294717>).

After you have installed and fully configured Management Reporter, you can add users and change security permissions. For more information, see the Management Reporter Help documentation.

Installing and Configuring the Data Integration

The data mart adapter for Microsoft Dynamics SL is installed at the same time as the Management Reporter server components. Install the Management Reporter Server components before you perform the steps that follow to configure the data integration and import the company information. For more information and installation procedures, see the [Management Reporter installation guide](#).

Configure the Data Integration

Management Reporter uses a data mart adapter to integrate information from a Microsoft Dynamics SL system. You can configure these components during initial configuration or after you have set up the application service and process for Management Reporter 2012.

Note: Management Reporter 2012 can integrate with multiple ERP systems. However, you can configure only one instance at a time.

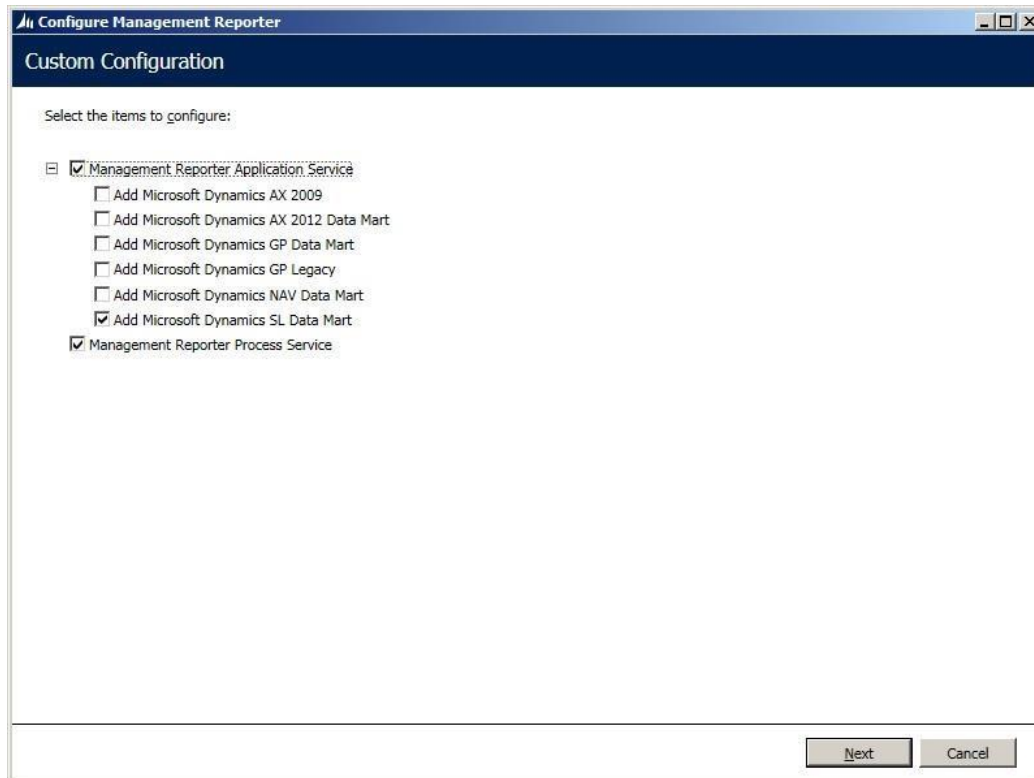
1. Click **Start**, select **Programs**, select **Microsoft Dynamics**, select **Management Reporter 2012**, and then select **Configuration Console** to open the Management Reporter Configuration Console.
2. In the Management Reporter 2012 Configuration Console, on the **File** menu, select **Configure** to open the **Custom Configuration** dialog box.

Note: This screen opens automatically the first time that you open Configuration Console.

3. Under **Management Reporter Application Service**, click to select one of the following check boxes for integration:

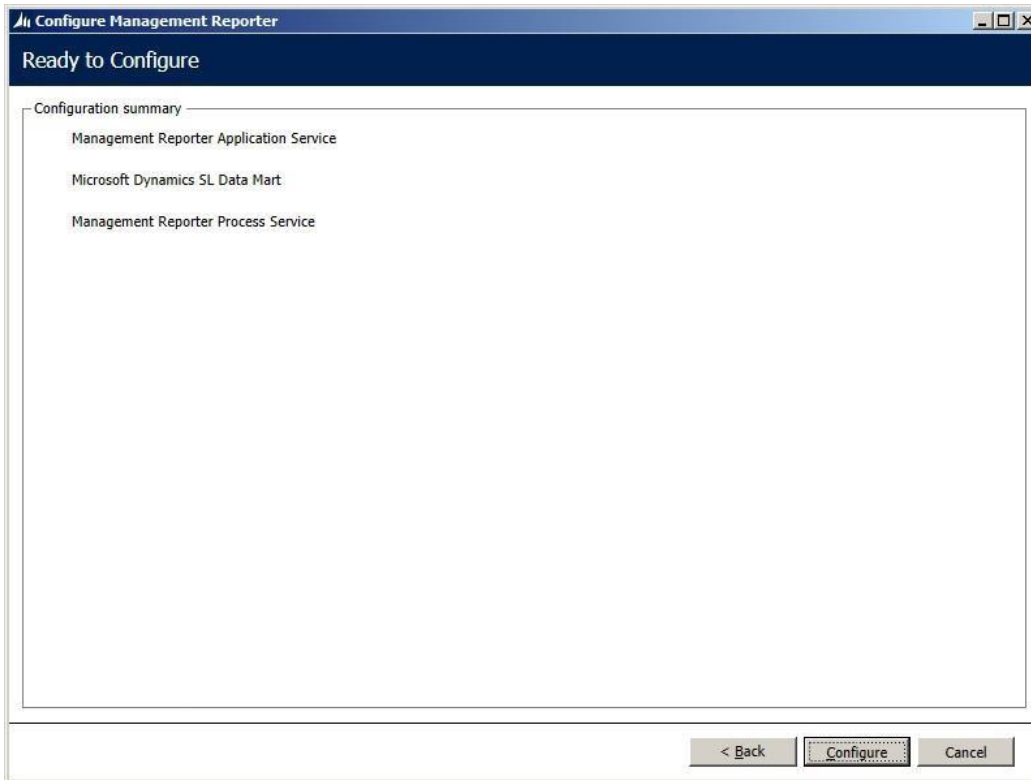
Add Microsoft Dynamics SL Data Mart - Configure a data mart integration for Microsoft Dynamics SL and create a data mart database.

Note: New Microsoft Dynamics SL legacy data provider integrations are not supported beginning with Management Reporter 2012 CU13. We recommend that you use a data mart integration.

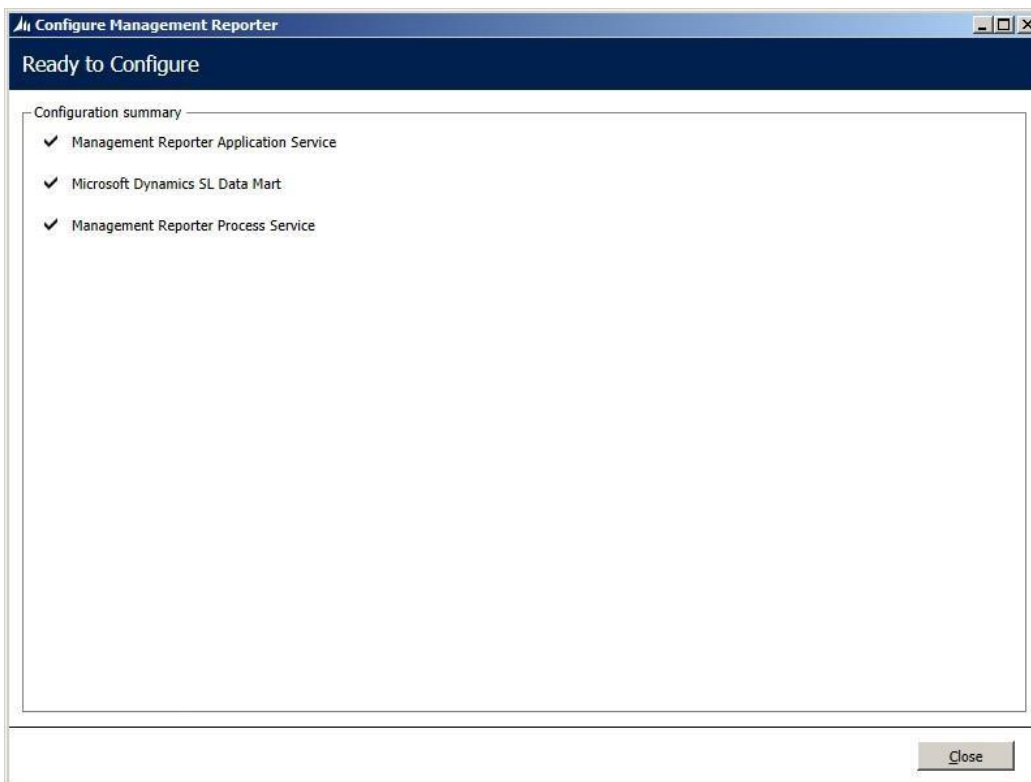


4. Click **Next**.
5. On the **Prerequisite Validation** page, review any failed prerequisites or warnings and resolve issues before you continue with the installation process. Click **Revalidate** to run the validation again.
Note: If you do not use Microsoft Excel for reporting, you do not have to install the prerequisites associated with that feature.
6. On the **Prerequisite Validation** page, click **Next**.
Note: This page closes automatically if there is nothing to review.
7. On the **Settings** page, specify the following settings:
 - a. **Microsoft Dynamics SL System Database connection information** section:
 - i. In **Database server**, type the name of the Microsoft SQL server to which you want to connect.
 - ii. If you use Windows Authentication, click to select the **Use Windows authentication** check box. If you use SQL Authentication, click to clear the **Use Windows authentication** check box, and then specify the User name and Password of the SQL server user. For more information, see User Account Requirements on page 10. iii. To use Secure Sockets Layer (SSL) for encryption, click to select the **Encrypt connection** check box. This encrypts the data that is transmitted between the instance of SQL server and Management Reporter 2012 services.
Note: You must configure SSL on the server and install certificates before you can use this option. For more information, see "Encrypting connections to SQL server" on MSDN (<http://go.microsoft.com/fwlink/p/?LinkId=294718>).
 - iii. In **Database**, select the Microsoft Dynamics SL system database to which you want to integrate.
 - b. **Data Mart connection information** section:
 - **Database server** – The server where the data mart database is located.
 - User name and password of the account that is used to create the data mart database. Select **Use Windows authentication** to use your current credentials.
 - **Database** – The name of the data mart database to which you want connect.
 - c. Click **Next**. You may be prompted to provide credentials that have sufficient permissions to enable SQL Server Change Tracking, such as a user who has a role of db_owner or a system administrator.

- Review the configuration summary information, and then click **Configure**.



- When the data mart adapter is successfully configured, click **Close**.



10. To integrate with another Microsoft Dynamics SL system database, repeat steps 1 through 9. To integrate with another ERP system, see the integration guide for that system.

11. After you configure all integrations, you must enable the integrations.

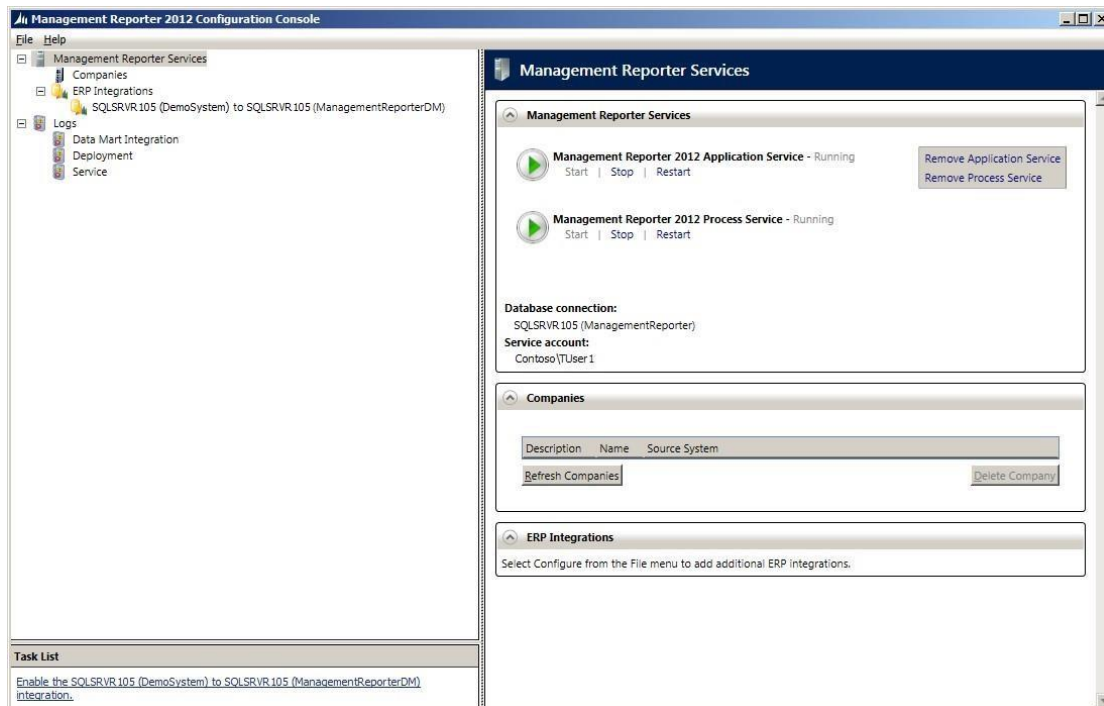
Enable the Data Mart Integration and Import Companies

After you have installed Management Reporter 2012 services and integrated with a Microsoft Dynamics SL system and enabled the data mart integration, the company information from the Microsoft Dynamics SL database is automatically imported into Management Reporter 2012.

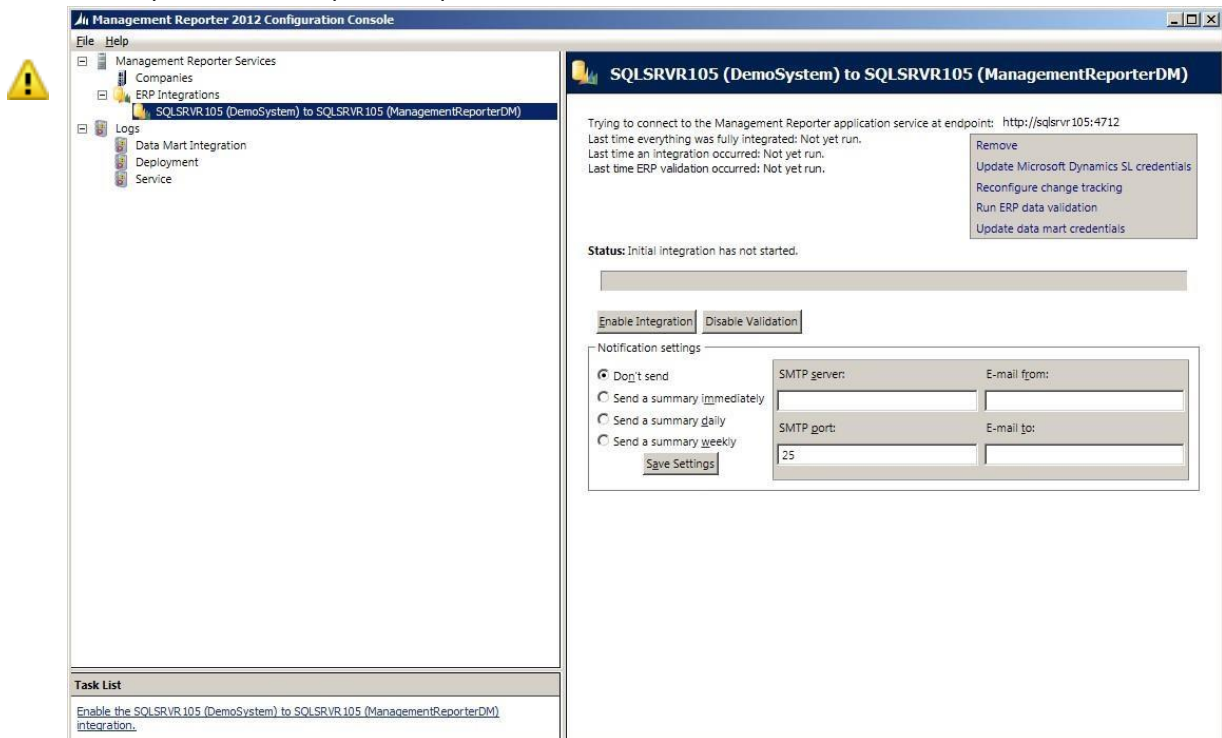
Note: If you are upgrading from an earlier version of Management Reporter, any companies that you had integrated in earlier versions of Management Reporter are automatically imported when you configured the data integration by following the steps starting on page 11.

1. In the *Management Reporter 2012 Configuration Console*, verify that the application service and the process service are running.

Note: If you are upgrading from an earlier version of Management Reporter 2012, you must upgrade the Management Reporter database and the data mart database before you start the Process Service. Start the Process Service after the upgrade of the Management Reporter database and after the integration process.



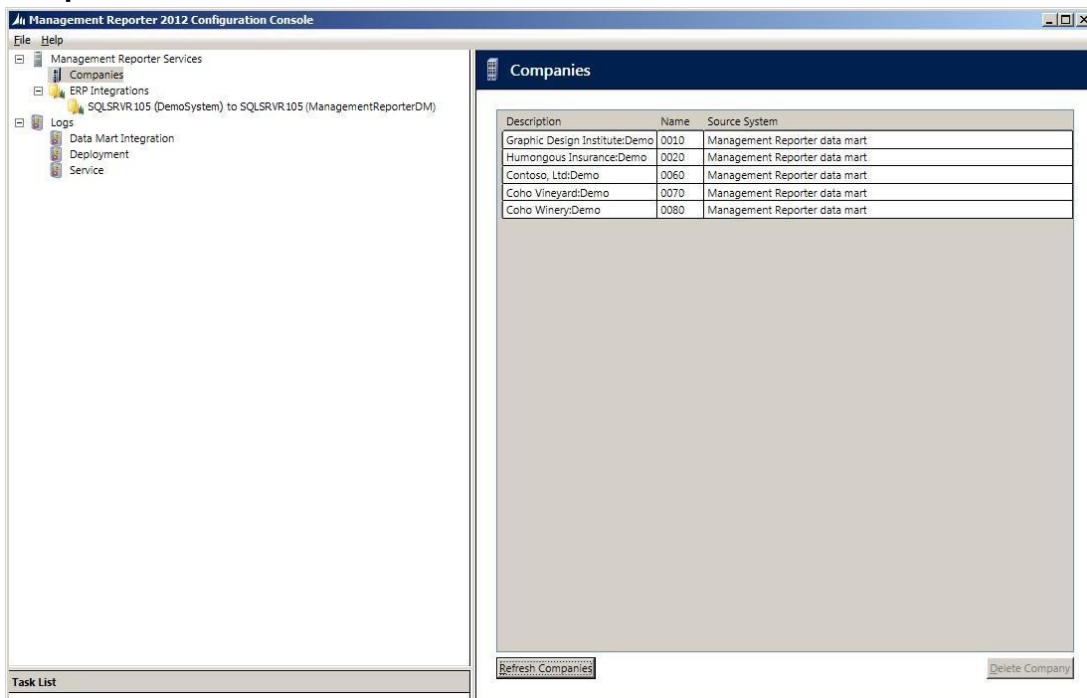
- In the navigation pane of *Management Reporter 2012 Configuration Console*, expand **Management Reporter Services**, and then expand **ERP Integrations**. Select the integration from which you want to import companies.



- If you use a data mart integration, the *Management Reporter 2012 Configuration Console* automatically reviews the data in your ERP for inconsistent or invalid data, to prevent inconsistent or invalid data in Management Reporter. The ERP data validation begins automatically after you create the integration. We recommend that you fix any data issues before you enable the integration. For more information, see the [Management Reporter installation guide](#).
- In the display pane, click **Enable Integration**.
- The integration of data begins. Information will change on the screen. The values next to the titles **Last time everything was fully integrated**, **Last time an integration occurred**, and **Last time ERP validation occurred** will change. When the information displays a date and time, the initial integration is completed. This includes the import of the companies.

Note: If any of these labels are not updated, verify that the application service and the process service are running.

- When everything is fully integrated, click the **Companies** node, and then click **Refresh Companies**.



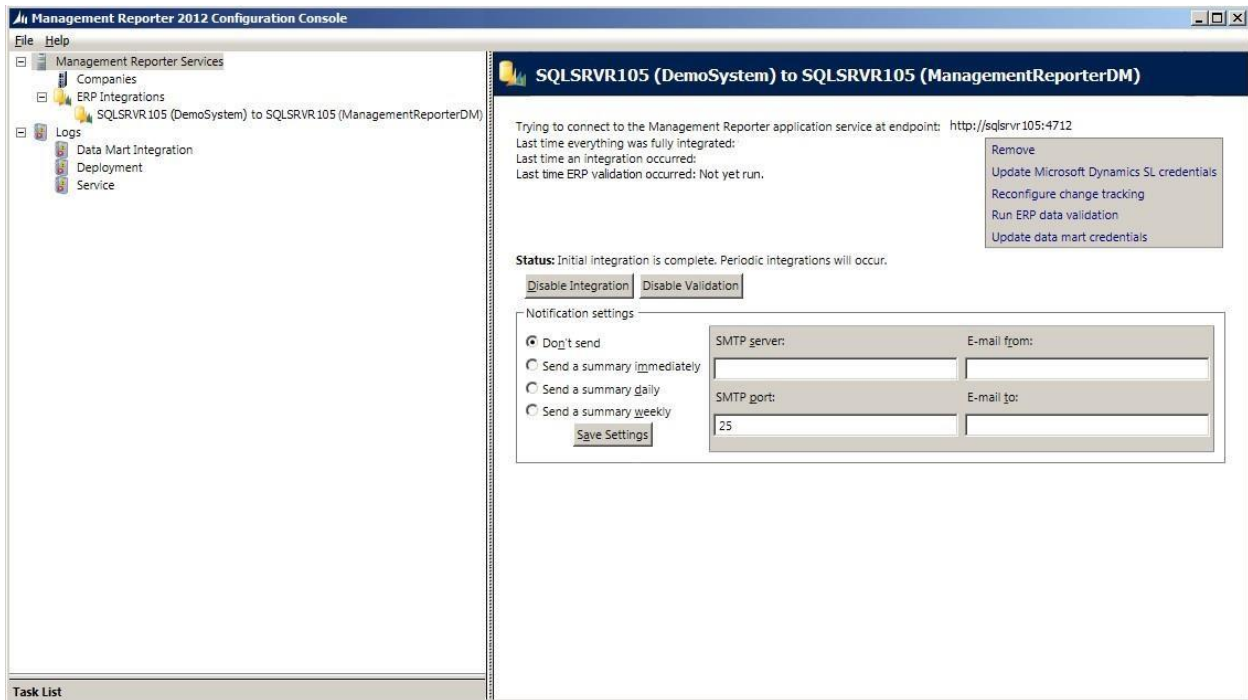
Note: The imported companies are listed in the navigation pane of *Management Reporter 2012 Configuration Console*, in the **Companies** node under **Management Reporter Services**.

- Close *Management Reporter 2012 Configuration Console*.

After you successfully complete the integration, install the Management Reporter 2012 client components. For more information and installation procedures, see the [Management Reporter installation guide](#).

Remove an Integration

To remove an existing integration, use the Management Reporter 2012 Configuration Console.

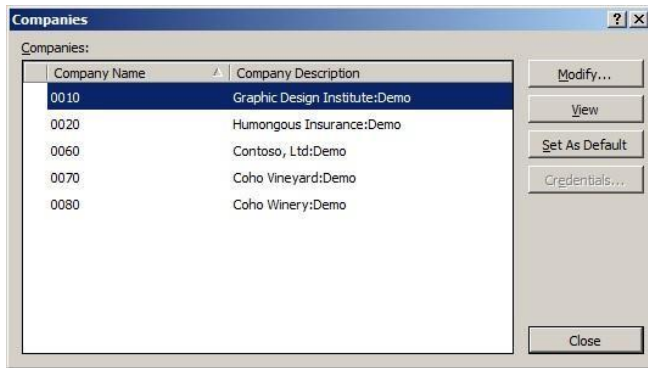


1. Open the *Management Reporter 2012 Configuration Console*.
2. Expand **Management Reporter Services**, and then expand **ERP Integrations**.
3. Click to select the integration that you want to remove.
4. On the right side, click **Remove** and then confirm that you want to remove the integration.
5. When the removal is complete, the integration is removed from the **ERP Integrations** list.

Specify the Default Company

The first time that you open Report Designer, you are prompted to designate a default company that identifies the source of data for reporting. This name appears in the headings of reports that you create in Management Reporter.

1. Click **Start**, point to **Programs**, point to **Microsoft Dynamics**, point to **Management Reporter 2012**, and then click **Report Designer**.
2. On the **Company** menu, click **Companies** to open the list of companies in Management Reporter.
3. Select the company that you want to assign as the default company, and then click **Set as default**.



4. If you use the legacy data provider, consider the following:
 - If you use Windows authentication, click to select the **Use Windows authentication** check box, specify the Windows user name (defaults from the currently logged in Windows user, in the *domain/username* format) and the Windows user password.
 - If you use SQL authentication, click to clear the **Use Windows authentication** check box, specify the Microsoft Dynamics SL user name and password. These credentials must match the credentials stored in the Microsoft Dynamics SL database.
5. Click **Close**.

Appendix

Available Attributes

The following attributes are available when you create reports from Management Reporter 2012.

Account Type

- Acct_Cat - Account Category
- AcctType - Account Type
- Active - Account Active Status
- ClassID - Account Class ID
- ConsolAcct - Account Consolidation Account
- RatioGrp - Account Ratio Group
- UnitofMeas - Account Unit of Measure
- User1 - Account User 1
- User2 - Account User 2
- User3 - Account User 3
- User4 - Account User 4
- User5 - Account User 5
- User6 - Account User 6
- User7 - Account User 7
- User8 - Account User 8

Transaction Type

- Balance Type - Transaction Balance Type
- BatNbr - Transaction Batch Number
- CpnyID - Transaction Company ID
- CrAmt - Transaction Credit Amount
- CuryCrAmt - Transaction Currency Credit Amount
- CuryDrAmt - Transaction Currency Debit Amount
- CuryEffDate - Transaction Currency Effective Date
- CuryId - Transaction Currency ID
- CuryMultDiv - Transaction Currency Operation
- CuryRate - Transaction Currency Rate
- CuryRateType - Transaction Currency Rate Type
- DrAmt - Transaction Debit Amount
- Employee ID - Transaction Employee ID
- GLTranDate - GL Transaction Date
- JrnlType - Transaction Journal Type
- Labor_Class_Cd - Transaction Labor Class

- LineRef - Transaction Line Reference
- Module - Transaction Module
- OrigAcct - Transaction Originating Account
- OrigBatNbr - Transaction Originating Batch Number
- OrigCpnyID - Transaction Originating Company ID
- OrigSub - Transaction Originating Sub Acct
- PC_Flag - Transaction PC Flag
- PC_ID - Transaction PC ID
- PC_Status - Transaction PC Status
- PerEnt - Transaction Period Entered
- ProjectID - Transaction Project ID
- Qty - Transaction Quantity
- RefNbr - Transaction Reference Number
- TaskID - Transaction Task ID
- TranDesc - Transaction Description
- TranType - Transaction Type
- TranUser1 - Transaction User 1
- TranUser2 - Transaction User 2
- TranUser3 - Transaction User 3
- TranUser4 - Transaction User 4
- TranUser5 - Transaction User 5
- TranUser6 - Transaction User 6
- TranUser7 - Transaction User 7
- TranUser8 - Transaction User 8
- Units - Transaction Units

Reporting When the Last Two Periods End on the Same Date

In MR 2012 CU9, if the last two periods of your fiscal year end on the same date, the data for these two periods is combined and reported as the first of the two periods. Beginning with MR 2012 CU10, the data for these two periods is no longer combined. You no longer need to use column restrictions of XAD and ADJ. With this change comes a slight adjustment to the period ending dates, as reported by Management Reporter. Two periods cannot end on the same date in Management Reporter; so the first of the two periods' ending date is adjusted by one day.

For example, you have set up period 12 and period 13 so that both periods end on 12/31. In MR 2012 CU9, all data for these two periods is reported as period 12 data, and period 13 data is recorded as adjustments to period 12. Beginning with MR 2012 CU10, period 12 data is reported in period 12 and period 13 data is reported in period 13. Note that the ending date of period 12 is now 12/30 (not 12/31) and the ending date for period 13 remains 12/31.

The following sections provide additional information about the Microsoft Dynamics SL data mart adapter.

Data Mart Displays Only Attributes Associated with Transactions

In earlier versions of Management Reporter, legacy data providers displayed all attribute values that were listed in the ERP database, regardless of context or functionality. This included attributes that were not associated with transaction data.

When you use a data mart integration, Management Reporter 2012 now displays only the attribute values that are associated with a transaction. This improves report creation and data analysis.

Supported Attributes

You can select attribute filters to include additional account and transaction information on reports in Management Reporter. Select attributes to filter in row or column definitions and to display in the columns. See Management Reporter Help documentation for more information about filters in attributes.

Drill to Dynamics from the Web Report Viewer

Drill to Dynamics is now available from the Management Reporter Web Report Viewer. Be aware of the following items when you use this feature from the Web Report Viewer:

- The **Period From** and the **Period Thru** that are passed to the *Account/Subaccount Detail Inquiry* (01.303.00) screen are the range of fiscal periods from 01 to the report's base fiscal period. If you need to, you can change these period numbers after the screen opens.
- You must click **Refresh** in the *Account/Subaccount Detail Inquiry* (01.303.00) screen so that the financial data appears.
- Drill to Dynamics from the Web Report Viewer is supported with Microsoft Dynamics SL 2011 Feature Pack 1 (FP1) and later versions.