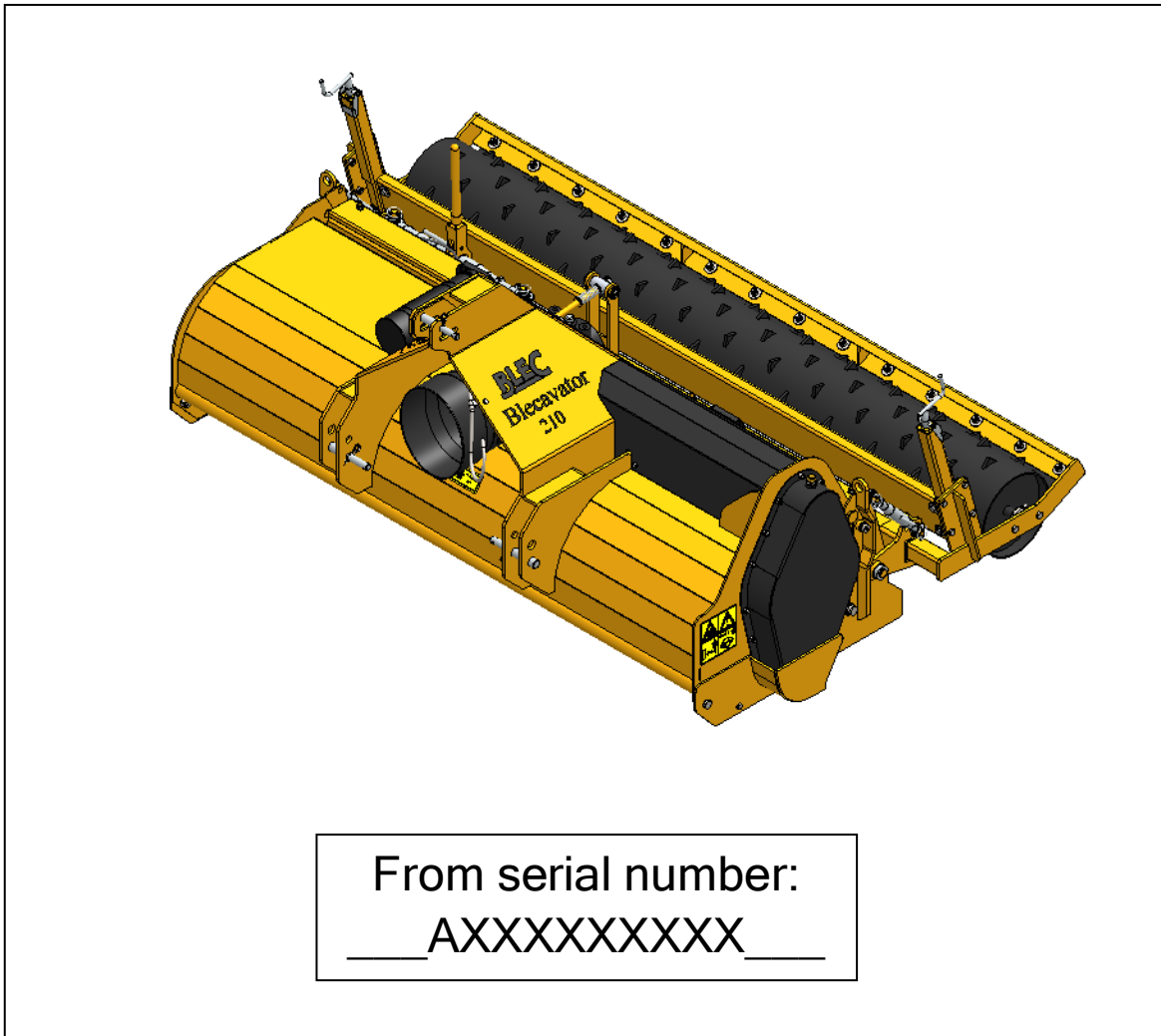


# Parts manual

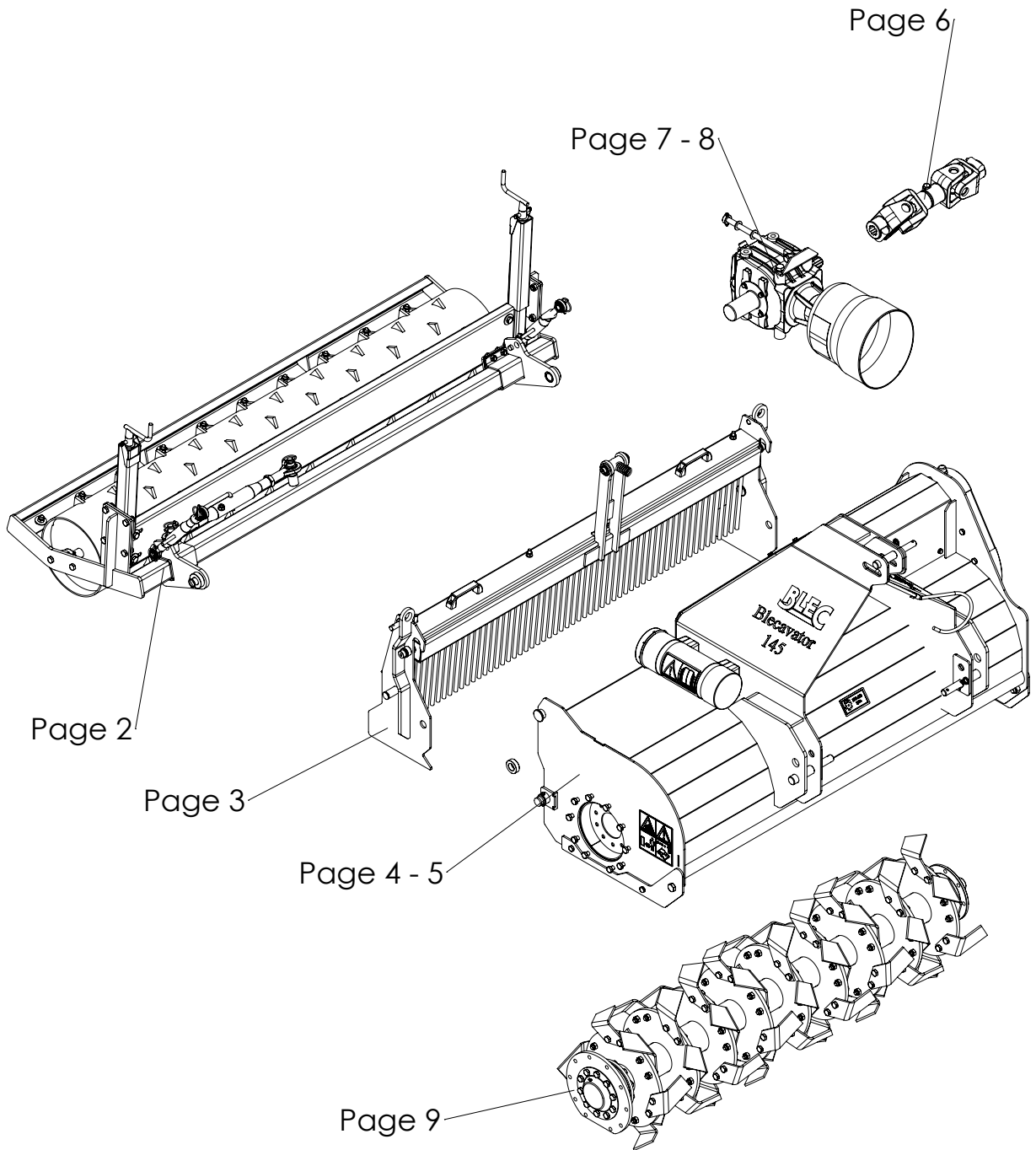


## Blecavator 145 / 180 / 210

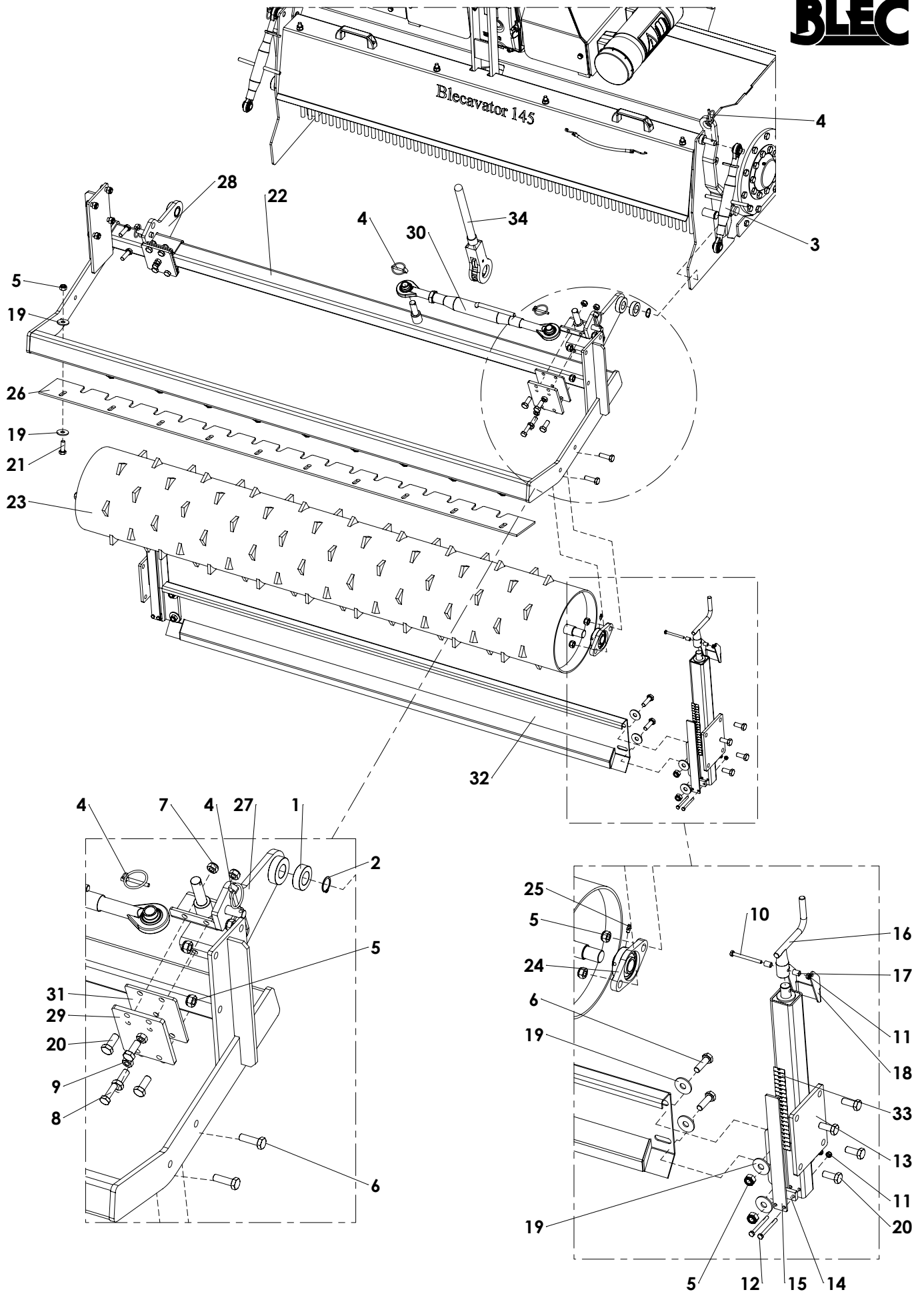


REDEXIM  
Kwekerijweg 8  
3709JA - Zeist - The Netherlands  
T: +31 (0)306 933 227  
E: [verti-drain@redexim.com](mailto:verti-drain@redexim.com)  
[www.redexim.com](http://www.redexim.com)

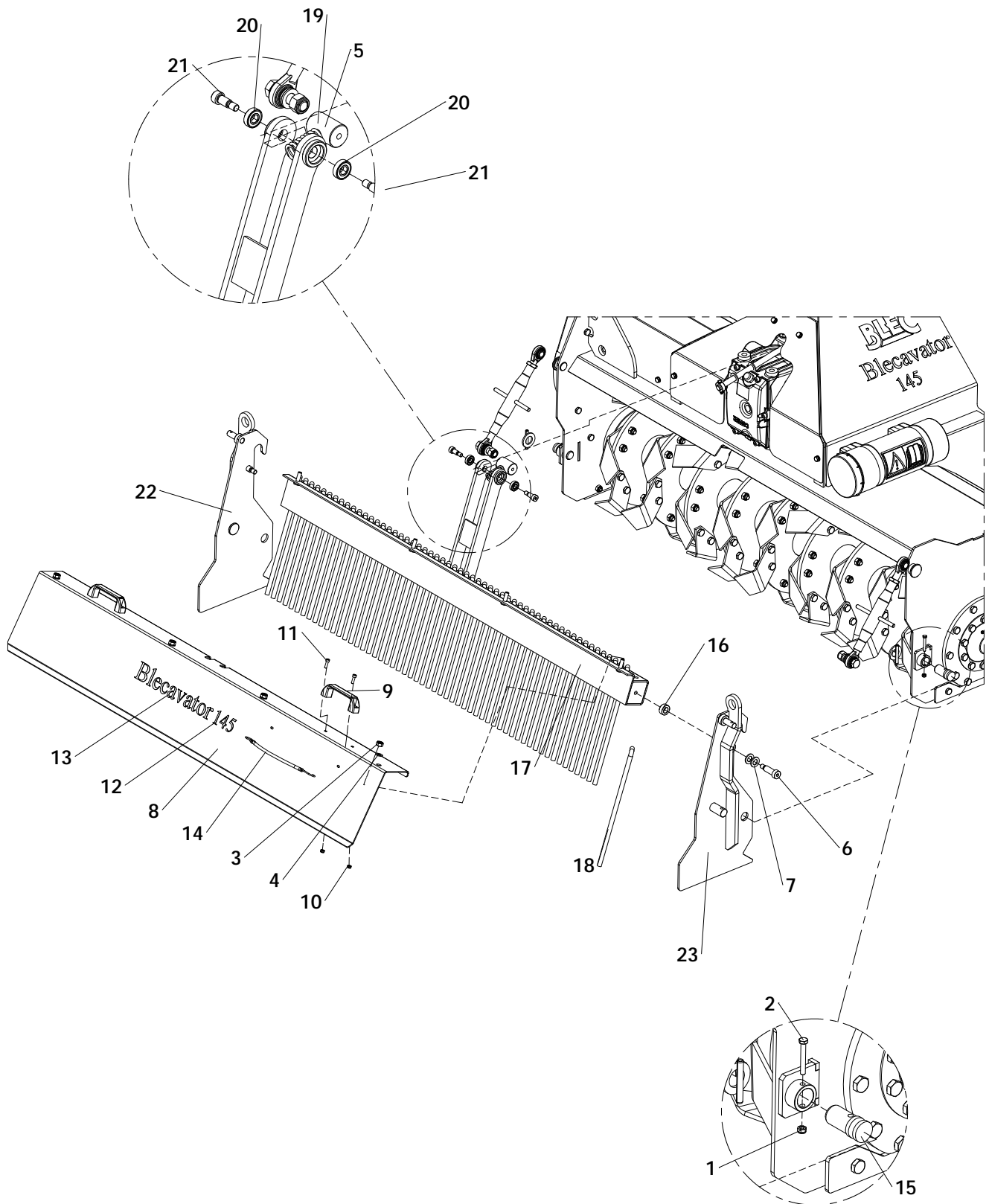




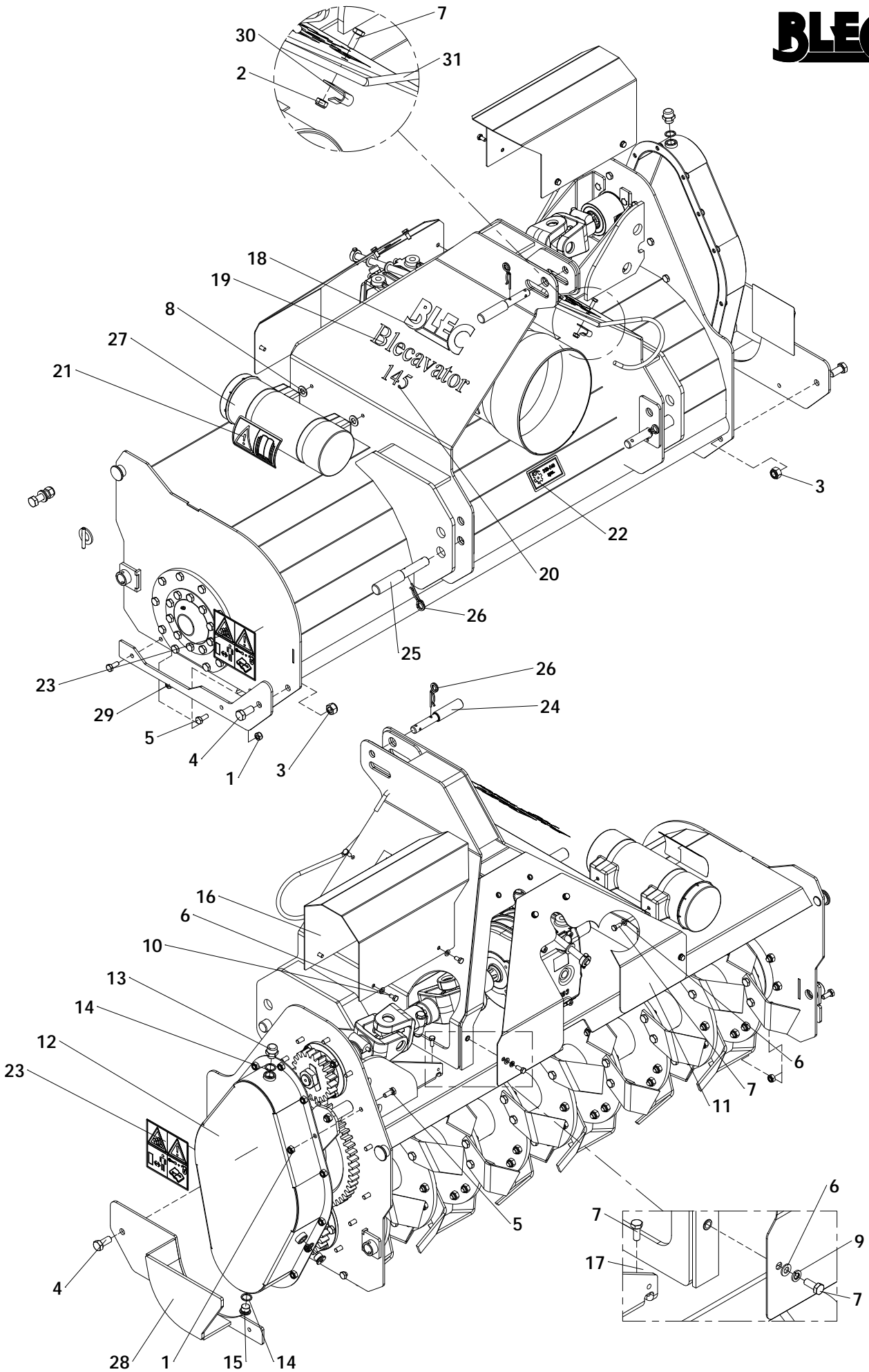
PTO : Page 10



ITEM	PART NUMBER	DESCRIPTION	REMARKS	QUA BV145	QUA BV180	QUA BV210
1	412.250.140	Distance washer		2	2	2
2	870.025.120	Circlip d=25 - DIN 471		2	2	2
3	522.163.000	Toplink Cat. 0 L0=300 Stroke=200		2	2	2
4	523.060.320	Linch pin Ø6		6	6	6
5	830.120.120	Self Lock Nut M12 - ISO 10511		26	28	30
6	804.120.400	Bolt M12 x 40 - ISO 4017		8	8	8
7	830.100.100	Self Lock Nut M10 - ISO 10511		8	8	8
8	804.100.350	Bolt M10 x 35 - ISO 4017		2	2	2
9	826.100.100	Nut M10 - DIN 934		2	2	2
10	802.060.650	Bolt M6 x 65 - ISO 4014		2	2	2
11	830.060.060	Self Lock Nut M6 - ISO 10511		6	6	6
12	802.060.600	Bolt M6 x 60 - ISO 4014		4	4	4
13	460.503.450	Weldment spindle		2	2	2
14	464.080.300	Distance Block		2	2	2
15	464.042.800	Height Indicator Strip, L= 280		2	2	2
16	474.251.162	Lever Jack		2	2	2
17	402.070.140	Distance Bush		4	4	4
18	468.031.180	Lock Plate		2	2	2
19	864.120.031	Large washer M12 - DIN 9021		28	32	36
20	804.120.300	Bolt M12 x 30 - ISO 4017		16	16	16
21	804.120.350	Bolt M12 x 35 - ISO 4017		10	12	14
22	494.184.059	Frame rear roller		1	0	0
	494.244.059	Frame rear roller		0	0	1
	494.214.059	Frame rear roller		0	1	0
23	488.319.182	Rear roller		1	0	0
	488.319.242	Rear roller		0	0	1
	488.319.212	Rear roller		0	1	0
24	742.250.360	Bearing UCFL 205		2	2	2
25	880.060.100	Grease nipple M6 DIN 71412A		2	2	2
26	468.069.176	Scraper		1	0	0
	468.069.117	Scraper		0	0	2
	468.069.103	Scraper		0	2	0
27	468.050.110	Side arm right		1	1	1
28	468.050.112	Side arm left		1	1	1
29	468.081.200	Mounting plate		2	2	2
30	522.194.200	Toplink Cat. 1 L0=420 Stroke=220 M24x3		1	1	1
31	444.051.200	Plate		2	2	2
32	468.039.169	Deflector plate		1	0	0
	468.039.229	Deflector plate		0	0	1
	468.039.199	Deflector plate		0	1	0
33	900.260.414	Decall Ruler		2	2	2
34	529.434.000	Ratchett for toplink		1	1	1



ITEM	PART NUMBER	DESCRIPTION	REMARKS	QUA BV145	QUA BV180	QUA BV210
1	830.060.060	Self Lock Nut M6 - ISO 10511		2	2	2
2	802.060.450	Bolt M6 x 45 - ISO 4014		2	2	2
3	830.100.100	Self Lock Nut M10 - ISO 10511		4	4	4
4	864.100.030	Washer M10 - ISO 7089		8	4	4
5	576.200.900	Spring		1	1	1
6	513.160.400	ISO 7379 - M12 - 16 x 40		2	2	2
7	864.160.030	Washer M16 - ISO 7089		8	4	4
8	456.150.340	Plate		1	0	0
	456.210.340	Plate		0	0	1
	456.180.340	Plate		0	1	0
9	444.151.250	Handle		2	2	2
10	830.060.060	Self Lock Nut M6 - ISO 10511		4	4	4
11	814.060.200	Bolt M6 x 20 - DIN 912		4	4	4
12	952.260.303	Label 145 black		1	0	0
	952.260.409	Label 210 black		0	0	1
	952.260.411	Label 180 black		0	1	0
13	952.260.306	Label Blecavator black		1	1	1
14	593.102.900	Rubber tie down strap		1	1	1
15	424.250.610	Pin Cat. 2 - 25,4 x 61		2	2	2
16	406.170.120	Distance bush		2	2	2
17	494.150.345	Tine bar		1	0	0
	494.210.345	Tine bar		0	0	1
	494.180.345	Tine bar		0	1	0
18	472.123.970	Tine		57	68	80
19	402.350.530	Bush		1	1	1
20	713.120.080	Bearing		2	2	2
21	813.120.200	ISO 7379 - M10 - 12x20		2	2	2
22	494.058.028	Hook left		1	1	1
23	494.058.029	Hook right		1	1	1





ITEM	PART NUMBER	DESCRIPTION	REMARKS	QUA BV145	QUA 180	QUA BV210
1	830.100.100	Self Lock Nut M10 - ISO 10511		18	18	18
2	830.080.080	Self Lock Nut M8 - ISO 10511		1	1	1
3	830.160.160	Self Lock Nut M16 - ISO 10511		4	2	2
4	804.160.350	Bolt M16 x 35 - ISO 4017		2	2	2
5	804.100.250	Bolt M10 x 25 - ISO 4017		18	18	18
6	864.080.030	Washer M8 - ISO 7089		10	10	10
7	804.080.200	Bolt M8 x 20 - ISO 4017		11	11	11
8	864.140.030	Washer M14 - ISO 7089		2	2	2
9	866.080.020	Spring Washer M8 - DIN 127		4	4	4
10	804.080.160	Bolt M8 x 16 - ISO 4017		4	4	4
11	456.660.460	Cover plate		1	1	1
12	456.640.340	Cover		1	1	1
13	537.120.300	Breather 1/2"		1	1	1
14	874.210.020	Copper washer 1_2		3	3	3
15	549.210.200	Blind plug G1/2		2	2	2
16	456.339.194	Cover		1	0	0
	456.063.019	Cover		0	0	1
	456.059.019	Cover		0	1	0
17	464.040.430	Bracket		4	4	4
18	900.260.504	Decall Blec black		2	2	2
19	952.260.306	Label Blecavator black		2	2	2
20	952.260.303	Label 145 black		2	0	0
	952.260.409	Label 210 black		0	0	2
	952.260.411	Label 180 black		0	2	0
21	900.280.402	Safety decall manual		1	1	1
22	900.260.422	Decall PTO 350 540		1	1	1
23	921.280.402	Safety decall VS		2	2	2
24	521.191.600	Top link pin OS		1	1	1
25	521.221.600	3-point pin		2	2	2
26	523.030.750	R-Clip Round 3, DIN 11024		3	3	3
27	444.803.100	Toolbox Complete		1	1	1
28	470.065.410	Slide plate		1	1	1
29	468.065.352	Wear strip		1	1	1
30	464.020.820	Lock strip		1	1	1
31	472.107.100	Hook		1	1	1

Apply torque 1000Nm  
Lock nut with Loctite 270 and fold lock washer around nut.

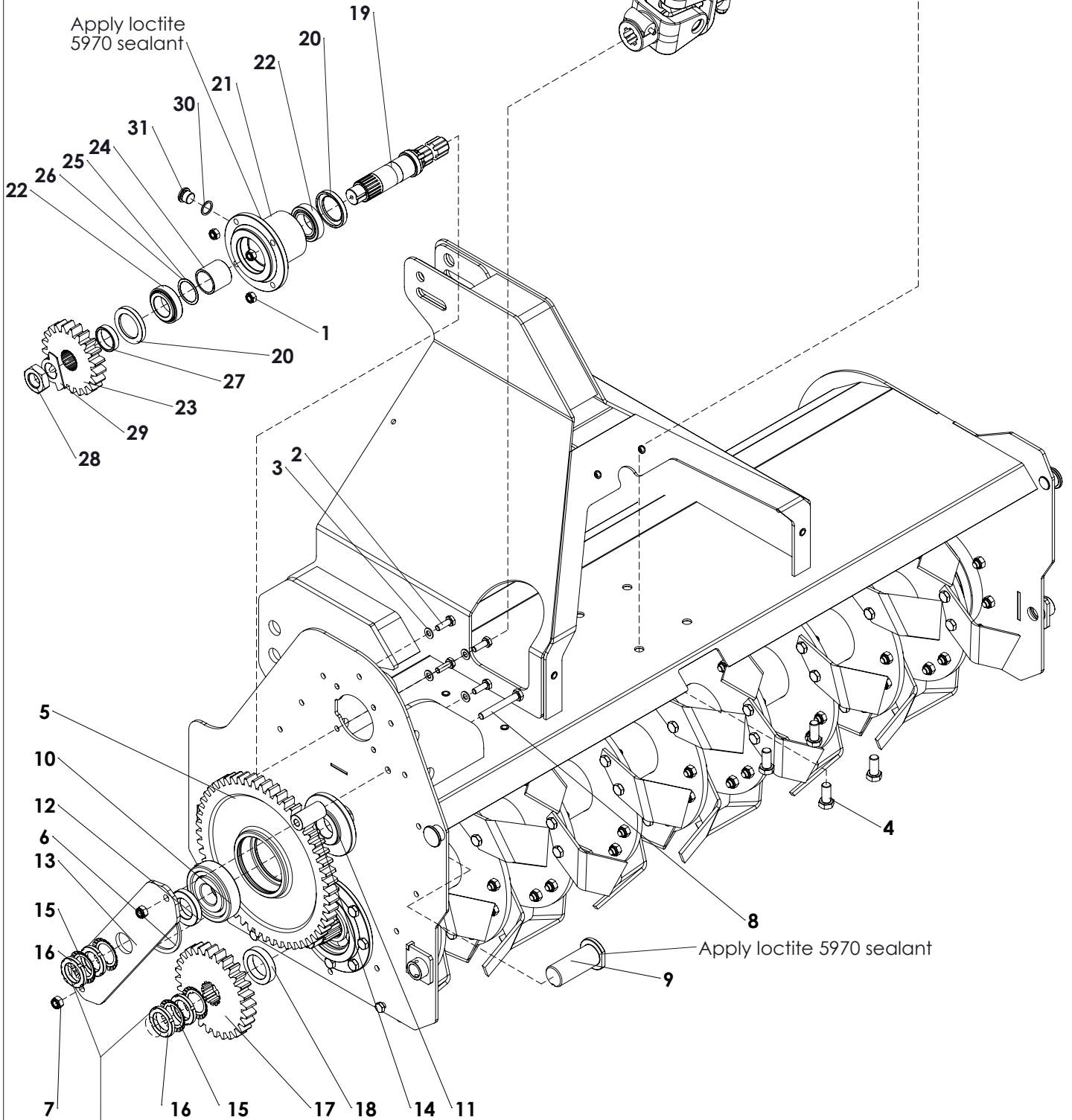
Axial tolerance of the bearings between +0.02 and +0.10mm  
Adjust with shims.

Use EP0 grease.  
Fill till plug hole.



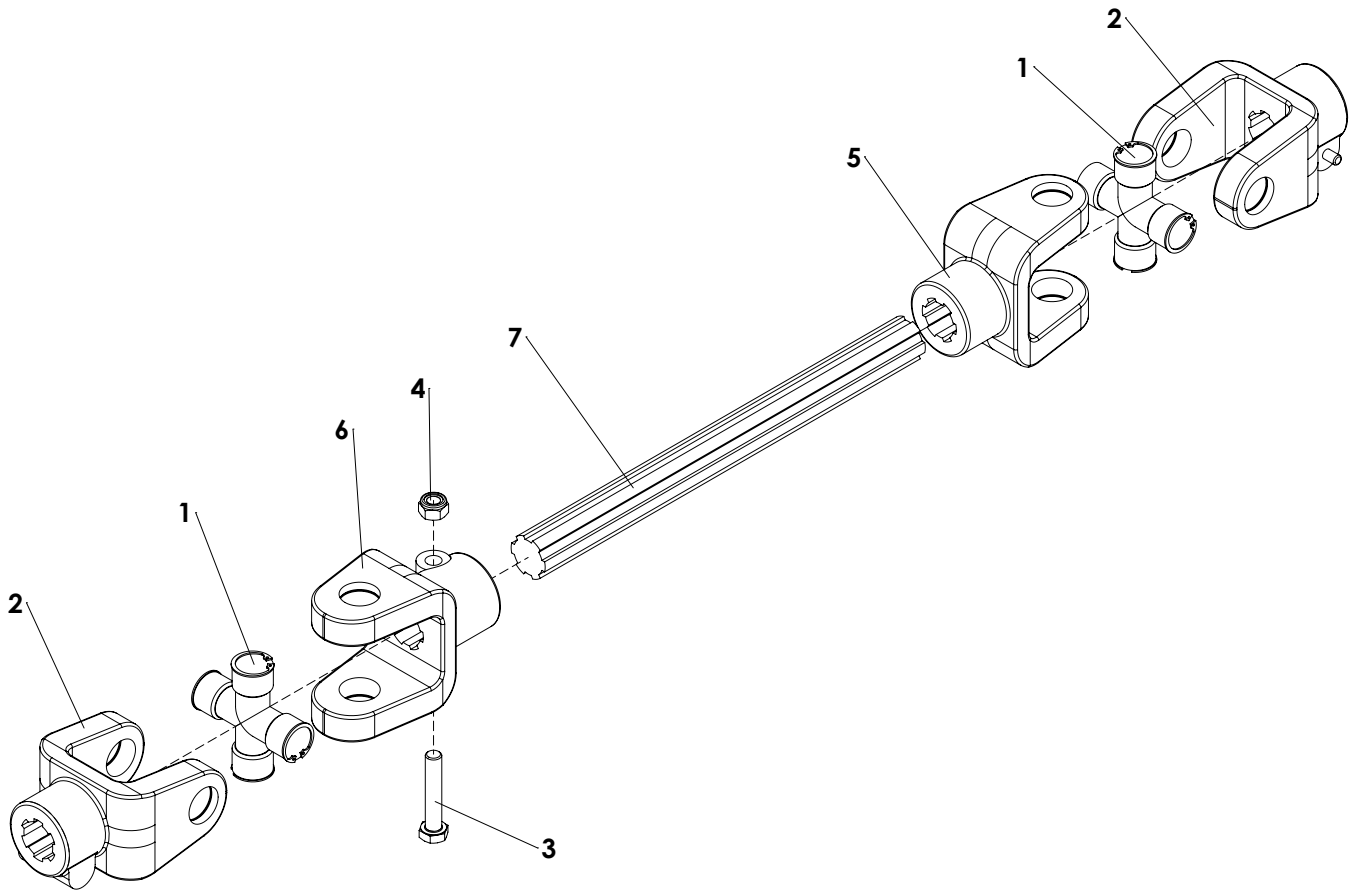
Page 7-8

Page 6



Apply torque 800Nm  
Lock nut with loctite 270 and fold lock washer around nut.

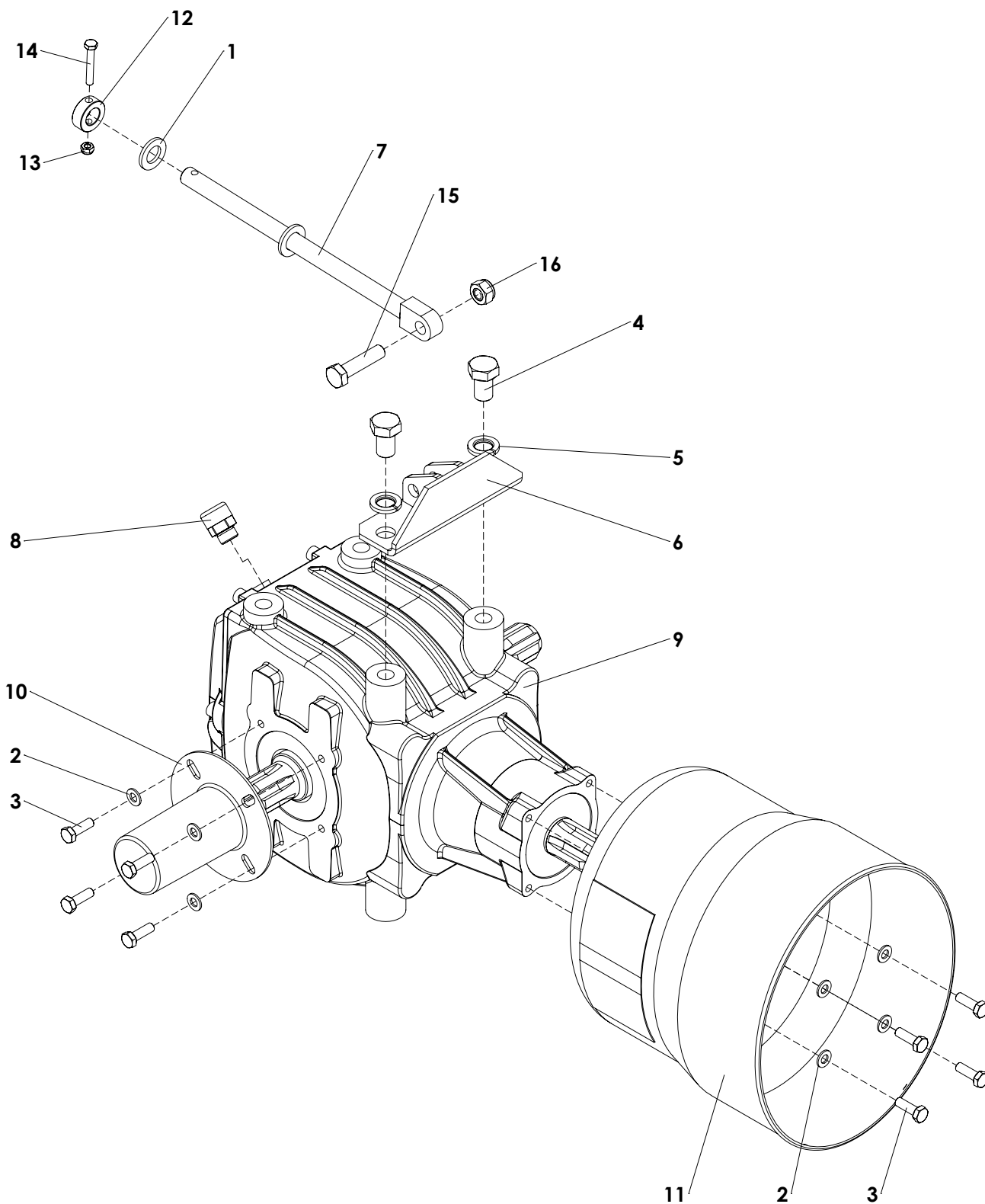
ITEM	PART NUMBER	DESCRIPTION	REMARKS	QUA BV145	QUA BV180	QUA BV210
1	830.100.100	Self Lock Nut M10 - ISO 10511		4	4	4
2	804.100.300	Bolt M10 x 30 - ISO 4017		4	4	4
3	864.100.030	Washer M10 - ISO 7089		4	4	4
4	804.160.350	Bolt M16 x 35 - ISO 4017		4	4	4
5	432.252.760	Gear 54T, Module 6, b25		1	1	1
6	872.110.400	Circlip D=110 - DIN 472		1	1	1
7	830.120.120	Self Lock Nut M12 - ISO 10511		2	2	2
8	802.120.900	Bolt M12 x 90 - ISO 4014		2	2	2
9	418.401.020	Shaft		1	1	1
10	713.400.270	Bearing 6408		1	1	1
11	406.400.211	Distance bush		1	1	1
12	406.400.123	Distance bush		1	1	1
13	468.053.502	Plate		1	1	1
14	406.130.606	Distance bush		2	2	2
15	874.400.010	Lock Washer		4	4	4
16	844.400.090	T-Lock nut M40x1,5		4	4	4
17	432.251.800	Gear 28T, Module 6, b25		1	1	1
18	406.400.140	Distance bush		1	1	1
19	424.482.200	Drive shaft		1	1	1
20	762.550.120	Seal 48-70-9 RP		2	2	2
21	472.135.804	Bearing house		1	1	1
22	725.400.190	Bearing 32008		2	2	2
23	432.251.380	Gear 21T, Module 6, b25		1	1	1
24	406.400.440	Distance bush		1	1	1
25	868.050.020	Shim Ø40xØ50x0.2 DIN988	Qua determined on setup			
26	868.050.010	Shim Ø40xØ50x0.1 DIN988	Qua determined on setup			
27	406.400.124	Distance bush		1	1	1
28	844.300.120	Low Nut M30x2 - DIN 439B		1	1	1
29	468.020.740	Lock plate		1	1	1
30	874.210.020	Copper washer 1_2		1	1	1
31	549.210.200	Blind plug G1/2		1	1	1



ITEM	PART NUMBER	DESCRIPTION	REMARKS	QUA BV145	QUA 180	QUA BV210
1	180016130	Cross and 4x circlip kit		2	2	2
2	141026001	Push pin yoke type 60		2	2	2
3	802.120.650	Bolt M12 x 65 - ISO 4014		1	1	1
4	830.120.120	Self Lock Nut M12 - ISO 10511		1	1	1
5	151016064	Splined yoke T-60		1	1	1
6	141026047	Splined yoke T-60 with clamp bolt		1	1	1
7	616.353.910	Splined shaft		0	0	1
	616.351.300	Splined shaft		1	0	0
	616.352.410	Splined shaft		0	1	0
	613.604.740	PTO complete	Blecavator 145			
	613.606.610	PTO complete	Blecavator 210			
	613.605.800	PTO complete	Blecavator 180			



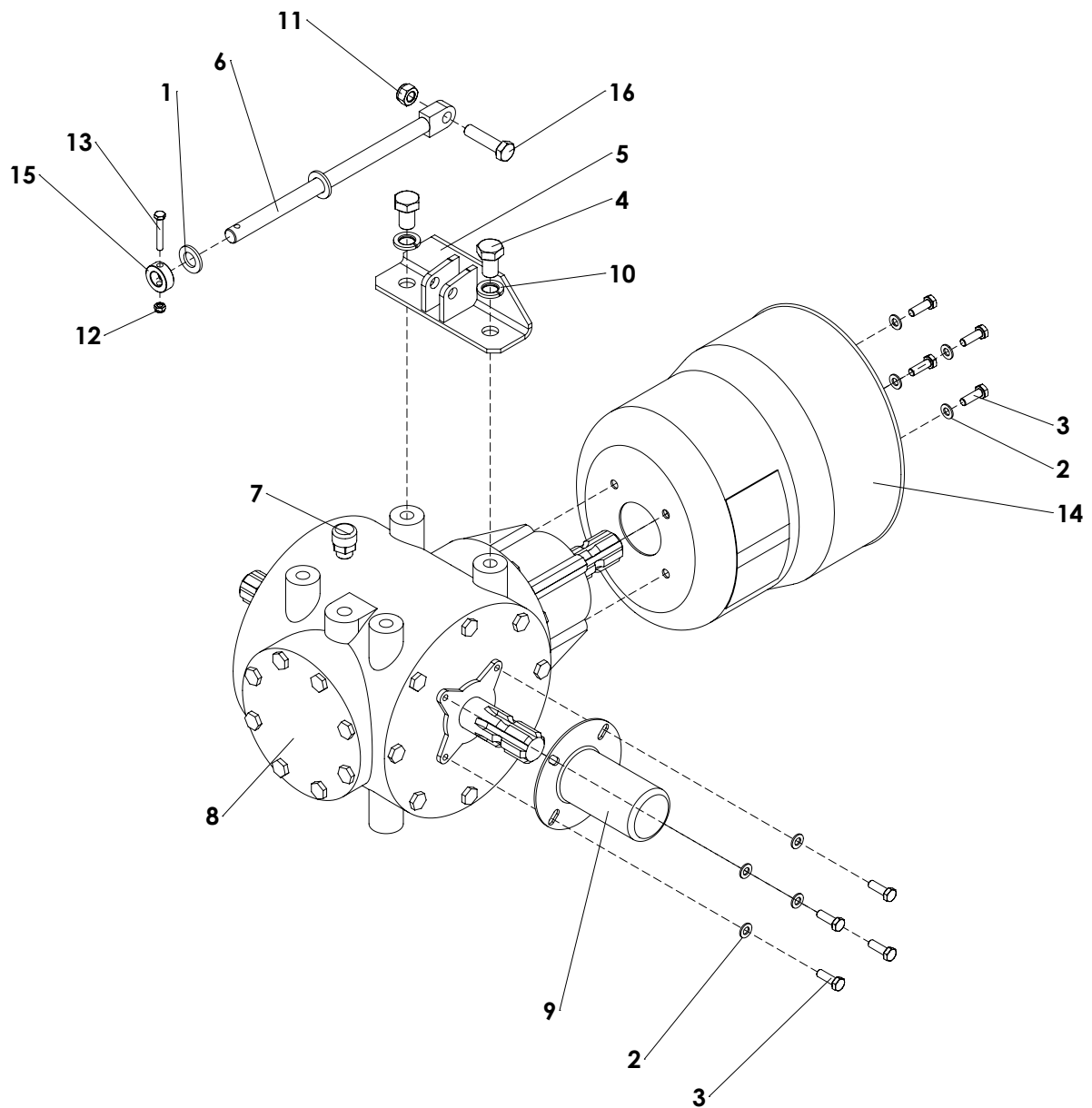
# Blecavator 145



ITEM	PART NUMBER	DESCRIPTION	REMARKS	QUA
1	864.160.030	Washer M16 - ISO 7089		1
2	864.080.030	Washer M8 - ISO 7089		8
3	804.080.250	Bolt M8 x 25 - ISO 4017		8
4	804.160.250	Bolt M16 x 25 - ISO 4017		2
5	866.160.020	Spring Washer M16 - DIN 127		2
6	468.051.202	Bracket		1
7	474.162.630	Shaft		1
8	537.380.360	Breather 3/8" BSP		1
9	622.202.372	Gearbox Comer T-22A 1.93:1		1
10	629.123.108	Cover PTO Shaft		1
11	629.275.240	PTO Cover 4xØ10 PD105		1
12	412.160.110	Washer		1
13	830.060.060	Self Lock Nut M6 - ISO 10511		1
14	802.060.400	Bolt M6 x 40 - ISO 4014		1
15	804.120.500	Bolt M12 x 50 - ISO 4017		1
16	830.120.120	Self Lock Nut M12 - ISO 10511		1

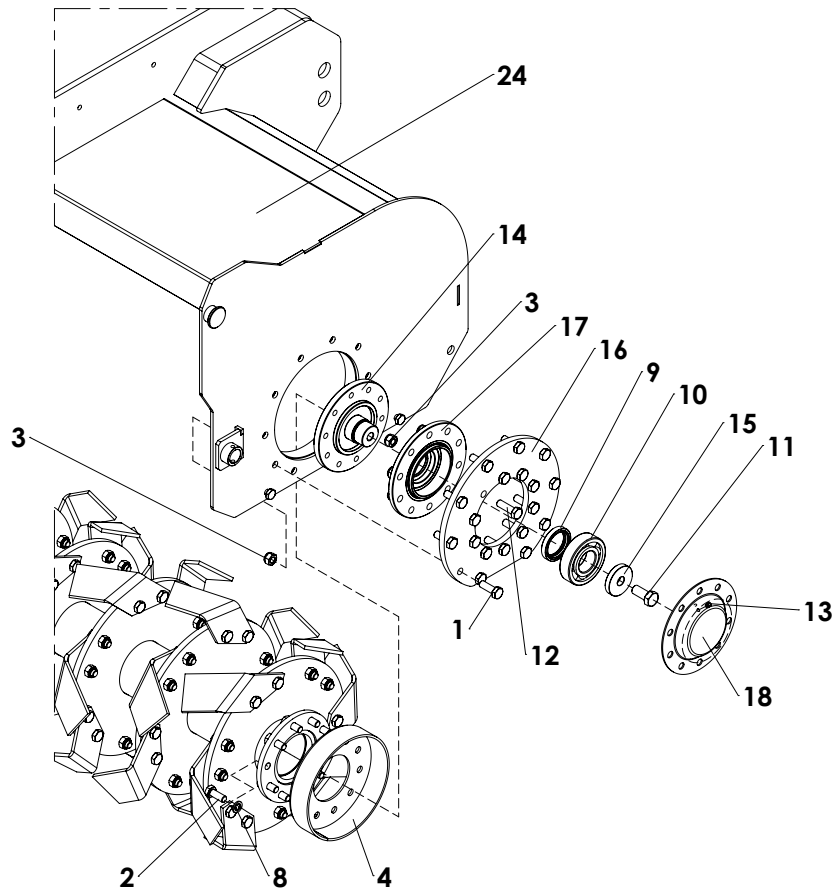
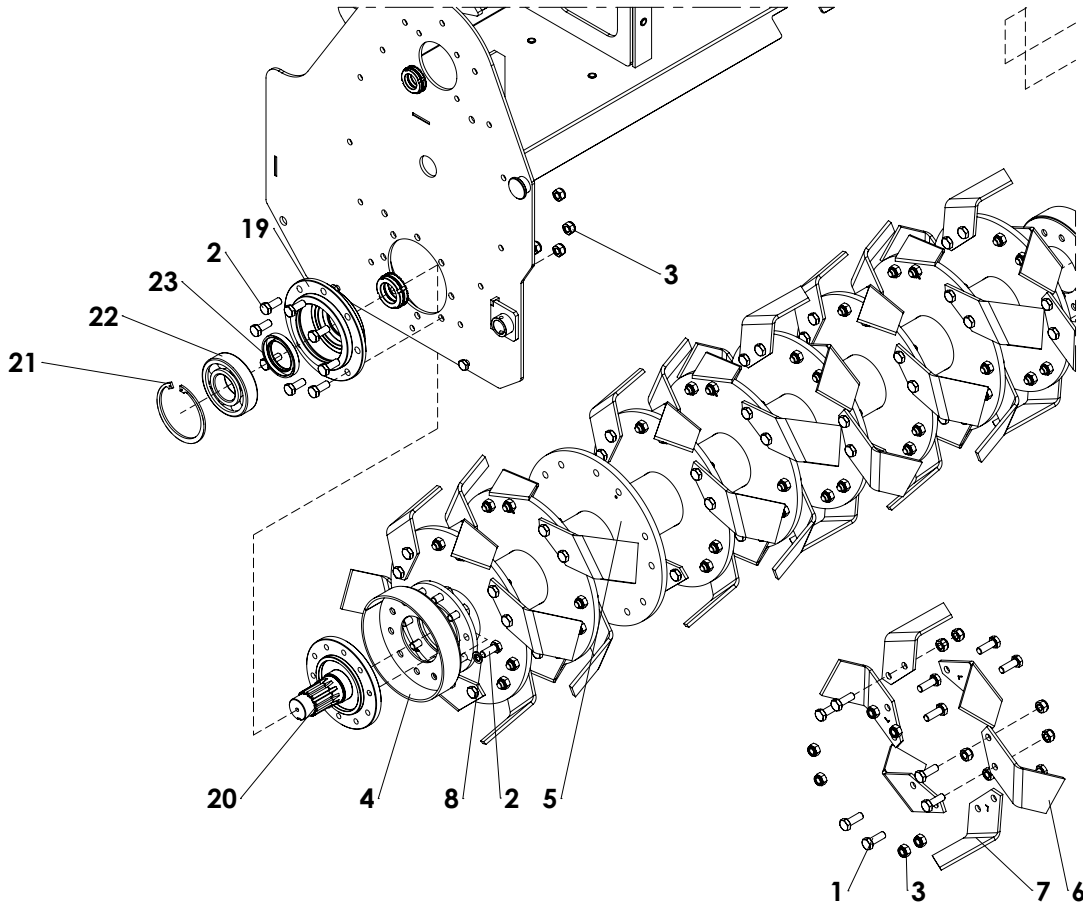


# Blecavator 180-210

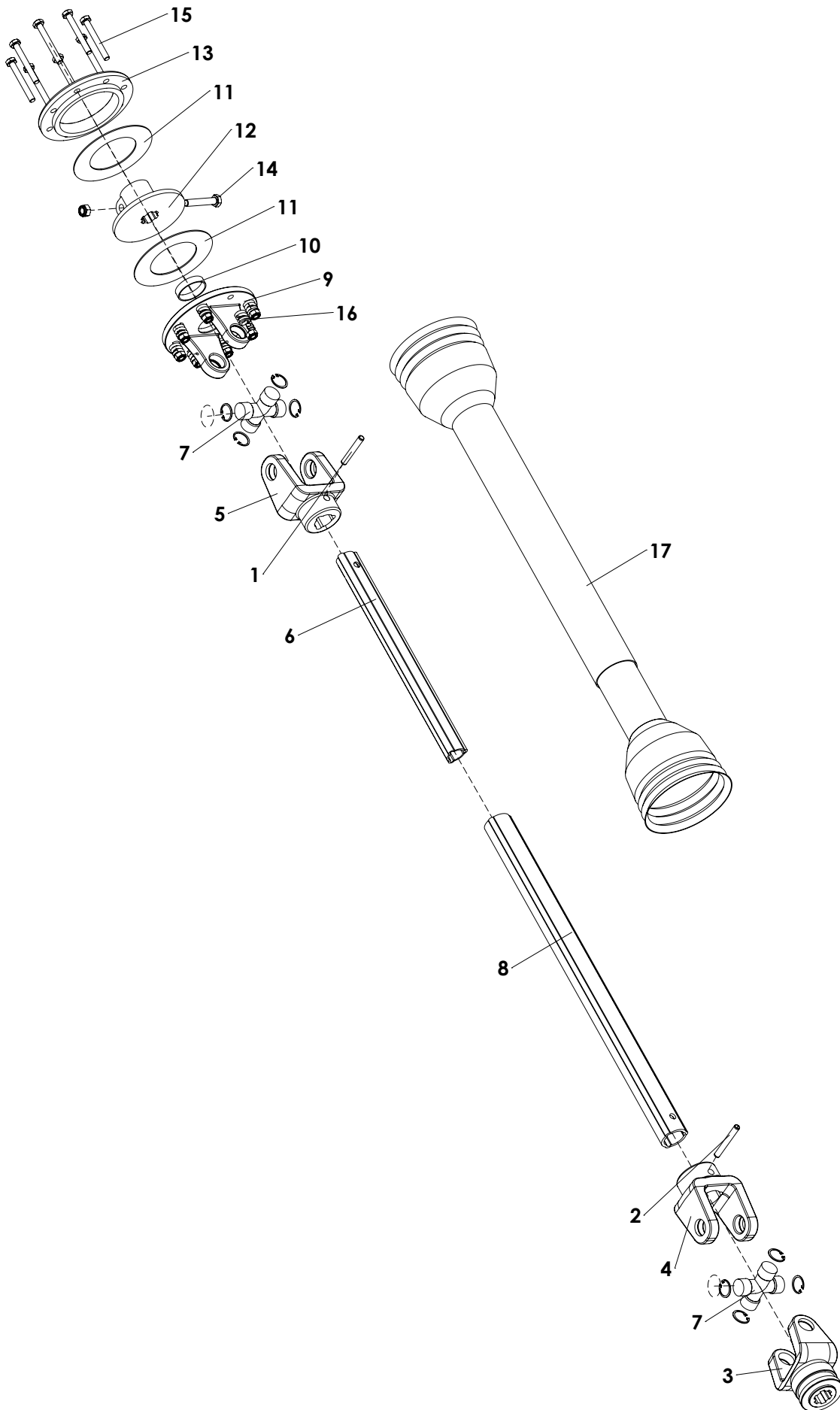




ITEM	PART NUMBER	DESCRIPTION	REMARKS	QUA
1	864.160.030	Washer M16 - ISO 7089		1
2	864.080.030	Washer M8 - ISO 7089		8
3	804.080.250	Bolt M8 x 25 - ISO 4017		8
4	804.160.250	Bolt M16 x 25 - ISO 4017		2
5	470.051.506	Bracket		1
6	474.163.180	Shaft		1
7	537.380.360	Breather 3/8" BSP		1
8	622.250.406	Gearbox Comer T-269A 1,42:1		1
9	599.021.070	PTO shaft cover		1
10	866.160.020	Spring Washer M16 - DIN 127		2
11	830.120.120	Self Lock Nut M12 - ISO 10511		1
12	830.060.060	Self Lock Nut M6 - ISO 10511		1
13	802.060.400	Bolt M6 x 40 - ISO 4014		1
14	629.275.240	PTO Cover 4xØ10 PD105		1
15	412.160.110	Washer		1
16	802.120.500	Bolt M12 x 50 - ISO 4014		1

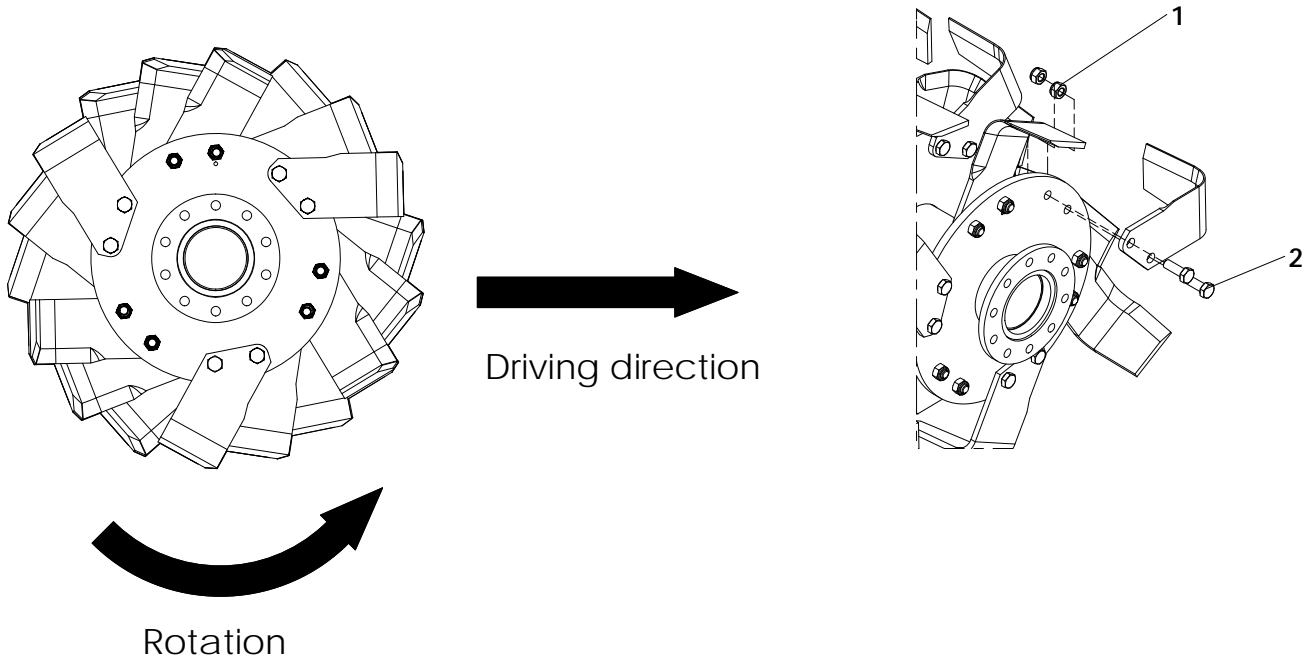
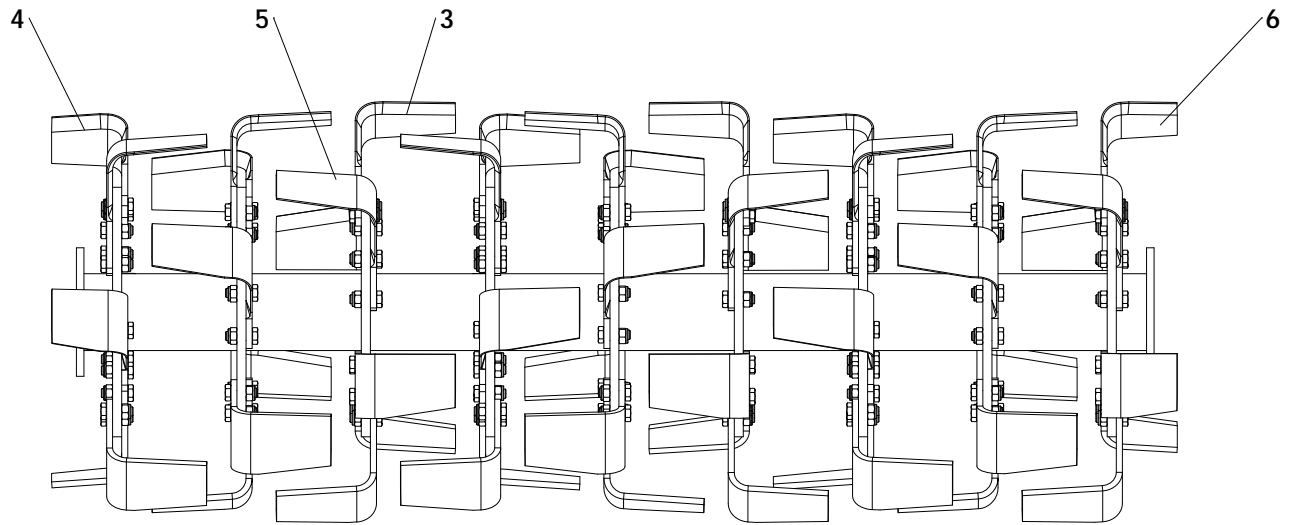


ITEM	PART NUMBER	DESCRIPTION	REMARKS	QUA BV145	QUA BV180	QUA BV210
1	804.120.350	Bolt M12 x 35 - ISO 4017		118	142	166
2	804.120.300	Bolt M12 x 30 - ISO 4017		28	28	28
3	830.120.120	Self Lock Nut M12 - ISO 10511		136	150	184
4	468.042.002	Dust cover		2	2	2
5	494.144.033	Weldment rotor		1	0	0
	494.204.033	Weldment rotor		0	0	1
	494.172.033	Weldment rotor		0	1	0
6	2986040	Stone burrier blade RH		27	33	39
7	2986042	Stone burrier blade LH		27	33	39
8	866.120.020	Spring Washer M12 - DIN 127		20	20	20
9	762.450.102	Combi seal 45-62-10		1	1	1
10	4816980	Bearing 6308		1	1	1
11	804.160.350	Bolt M16 x 35 - ISO 4017		1	1	1
12	804.120.400	Bolt M12 x 40 - ISO 4017		10	10	10
13	880.060.100	Grease nipple M6 DIN 71412A		1	1	1
14	488.140.114	Shaft end		1	1	1
15	410.160.100	Washer		1	1	1
16	468.122.802	Flange support		1	1	1
17	478.180.039	Flange		1	1	1
18	456.002.018	Side cover		1	1	1
19	472.190.530	Flange		1	1	1
20	488.140.112	Shaft end		1	1	1
21	872.110.400	Circlip D=110 - DIN 472		1	1	1
22	711.500.270	Bearing 6310		1	1	1
23	762.550.100	Combi seal 55-80-10		1	1	1
24	494.159.620	Frame Blacavator 145		1	0	0
	494.219.073	Frame Blacavator 210		0	0	1
	494.189.073	Frame blecavator 180		0	1	0



6YW ..... 6YWUj Uhc f%( ) Ž % \$ Ž &%\$ ..... DU[ Y %\$ ..... 7 cXY %+) %

ITEM	PART NUMBER	DESCRIPTION	REMARKS	QUA
1	190000016	Inner roll pin		1
2	190000018	Outer roll pin		1
3	141026108	Complete collar yoke type 60		1
4	151016028	Outer tube yoke type 60		1
5	151016029	Inner tube yoke type 60		1
6	153160150	T60-series Inner tube		1
	153160114	Inner tube towed	With boggy	
7	180016130	Cross and 4x circlip kit		2
8	152160475	T60-series Outer tube		1
	152160214	Outer tube towed	With boggy	
9	151016039	Flanged yoke T60		1
10	180015020	Bush		1
11	180015019	Lining ring		2
12	151015018	Hub T60		1
13	180015021	Pressure plate		1
14	165000502	Bolt and Nut	Retighten every 40 hours	1
15	165000501	Bolt and nut		8
16	180014022	Spring		8
17	1422602987630	Complete guard 60-series	Cut to correct length	1
.				
	600610	Complete PTO T60		
.				
		ALWAYS deburr parts when cut		
		MEASURE correct length of PTO first		
		MAINTAIN slipclutch every month		
		NEVER USE PTO over 30 degrees angle		
		SLIPCLUTCH always on machine side		



L-blade option

ITEM	PART NUMBER	DESCRIPTION	REMARKS	QUA BV145	QUA BV180	QUA BV210
1	830.120.120	Self Lock Nut M12 - ISO 10511		108	132	156
2	804.120.350	Bolt M12 x 35 - ISO 4017		108	132	156
3	351.308.180	Blade Blecavator 8mm Left		24	30	36
4	351.308.181	Blade Blecavator 8mm Right short		3	3	3
5	351.308.182	Blade Blecavator 8mm Right		24	30	36
6	351.308.183	Blade Blecavator 8mm Left short		3	3	3