



# BOEM Bureau of Ocean Energy Management

## BOEM Overview

### MAPPS

MAPPS 2021 Virtual Federal Programs Conference  
Federal Agency Briefings & Liaison Meetings  
April 7, 2021

**Beth Wenstrom, Chief of the Geospatial Service Division  
Office of Strategic Resource Programs**

# MISSION

BOEM's mission is to manage development of U.S. Outer Continental Shelf energy and mineral resources in an environmentally and economically responsible way.

The Outer Continental Shelf (OCS) is a **vital national resource** reserve held by the Federal Government for the public, which should be made available for **expeditious and orderly development**, subject to **environmental safeguards**, in a manner which is consistent with the maintenance of competition and other national needs.

- **Outer Continental Shelf Lands Act (OCSLA) | Sec 3(3)**

## U.S. Outer Continental Shelf

[ We manage nearly **2.3 billion** acres of the ocean. ]

Alaska OCS Region

Pacific OCS Region

Pacific OCS Region

Gulf of Mexico OCS Region

Atlantic OCS Region

Nearly one-fifth of our **nation's oil** comes from federal waters.

Almost half of the U.S. population lives near coastal areas, where **offshore winds** are typically stronger and more consistent than onshore.

**Marine minerals** can rebuild shorelines, reduce coastal erosion and provide protection from natural disasters.





# OVERVIEW

## Key Energy and Marine Minerals Functions Include:

Identification of areas on the U.S. Outer Continental Shelf suitable for leasing, exploration, and development	Reviewing plans prior to exploration, site assessment, development, and construction and operations
Coordination with state, local, and tribal governments	Resource Evaluation
Planning and carrying out lease sales and ensuring fair market return	Environmental Science
Economic Analysis	Environmental Regulatory Reviews and Compliance



# OUTER CONTINENTAL SHELF RENEWABLE ENERGY

- **As an emerging part of the nation's energy portfolio, BOEM's OCS renewable energy program provides a new source of domestic energy supply with less carbon emissions and offers the prospect of more domestic jobs and wages, and increased revenues from lease bonuses, rentals on acreage leased, and production operating fees.**
- **In the future, BOEM anticipates development of offshore renewable energy from three sources:**
  - wind energy,
  - ocean wave energy
  - and ocean current energy.



# IMPORTANCE OF MAPPING AND SURVEYING

The Bureau of Ocean Energy Management (BOEM) promotes energy independence, environmental protection and economic development through responsible exploration and development of offshore energy and marine mineral resources on the U.S. Outer Continental Shelf (OCS) based on the best available science.

Mission-focused mapping, exploration and characterization efforts guide and inform responsible management of offshore resources, particularly for:

- (1) site characterization for offshore energy development and supply of marine critical minerals;
- (2) energy and mineral resource assessment;
- (3) locating sensitive benthic habitats, submerged cultural resources, undersea cables, etc., to ensure those resources are protected and for environmental analyses;
- (4) locating sediment resources that are suitable to fulfill coastal nourishment and protection projects; and (5) administration of official offshore marine cadastral data, which includes lease grids and various offshore boundaries for jurisdictional enforcement and resource management.

<https://www.boem.gov/about-boem>





# AN OCEAN OF INFORMATION

### Maps and GIS Data

- MarineCadastr.gov** — This online interactive map viewer has integrated submerged lands information consisting of legal, property ownership (3 address), physical, biological, ocean uses, and cultural information from multiple agencies in a common reference framework. Users can create, view, and print maps from this tool, map to use onshore, or can directly link these GIS data layers back into their own GIS applications. Most data are downloadable directly from the data registry. Additional map mash-ups are available to use or for simple viewing.
- Other tools such as **ClearReports** and the **Environmental Studies Program Information System - ESPIS** can also be found from the **MarineCadastr.gov** site.
- GIS Data/Shapefiles** — Download GIS data files for BOEM Offshore block grids, boundaries, active leases, wells, pipelines, and more.
  - Atlantic
  - Gulf
  - Pacific
  - Alaska
  - GIS Data Maintained by the Office of Renewable Energy Programs
- OPD, SOBD, CBD, & Lease Map Diagrams** — Official Protection Diagrams (OPDs) and Lease Maps show the OCS block grids and other boundaries for a given area. Supplemental Official Block Diagrams (SOBDs) are created for individual blocks which are interrelated by offshore boundaries. The zip files may contain both current and historic SOBDs. The older SOBDs are provided for historical reference, but all future activities will be based on the most current SOBDs. Composite Block Diagrams (CBDs) show NAD 27 base information portrayed on the NAD 83 coordinate, or show other boundaries that have changed over time. Next to OPDs have SOBDs or CBDs associated with them. Click on the individual Region names:
  - Atlantic
  - Gulf
  - Pacific
  - Alaska
- BOEM Map Gallery** — Direct links to a selection of national, regional, local and special purpose maps which are spread throughout BOEM's web site.
- OCS Boundary Policies and Procedures** — This page contains court decisions, treaties, regulations, policies, procedures, and other documents that guide the boundary making process on the Outer Continental Shelf.
- Additional Data Sources** — Links to additional (external) GIS data sources.

- #### Web-based Tools
- MarineCadastr.gov National Viewer v3.0**  
This Web-based viewer provides ocean-related data and information from authoritative sources to support ocean-planning efforts.
  - OceanInfoPoints**  
This is a web-based, report-centric tool for coastal and ocean planners. It provides summary statistics and infographics for six main topics: general information, energy and minerals, natural resources and conservation, oceanographic and biophysical, transportation and infrastructure, and economic and commerce.
  - Marine Minerals Information System**  
This web-based viewer provides data and information about offshore mineral resources throughout the U.S. The interactive tool displays information for active leasing, potential sand resources, and beach nourishment. Coastal communities find this a valuable educational resource and a guide for responsible resource stewardship.
  - Environmental Studies Program Information System (ESPIS)**  
The ESPIS query tool enables users to search by text or map to find relevant study information, including downloadable study profiles, technical summaries and final reports, and links to publications and digital data.

- #### Desktop Tools
- AIS Track Builder Pro 1.0**  
This ArcGIS Pro toolbox converts vessel positions into track lines, and track lines into a grid. Each grid cell reports the total number of times a vessel has passed through it.
  - AIS Track Builder 3.1**  
This ArcGIS Desktop toolbox reads and converts a collection of point features into a track line. Input data can be either in a CSV format or in an existing file geodatabase, beginning with 2015 MarineCadastr data.
  - AIS Track Builder 2.1.1**  
The AIS Track Builder is an ArcGIS Toolbox that converts a collection of point features into a track line according to date, time, and an identifier.
  - AIS Data Handler**  
The AIS Data Handler is a desktop AIS data conversion tool and ArcGIS add-in that streamlines the acquisition, loading, filtering, display, and analysis of AIS vessel-tracking data. Please note that this tool is now archived.

- #### Regional Maps
- American Samoa CMPSP**  
American Samoa Coastal and Marine Spatial Planning Data Portal
  - South Atlantic Bight Marine Assessment**  
Non-Federal planning map prepared by the National Oceanic and Atmospheric Administration for the South Atlantic Bight Marine Assessment.
  - Northwest Atlantic Marine Ecological Assessment**  
This non-federal map was prepared by the National Oceanic and Atmospheric Administration for the Northwest Atlantic Marine Ecological Assessment.
- #### Thematic Maps
- US Atlantic Coast Fishing Atlas**  
Spatial extent of the Angler Guide to the United States Atlantic Coast.
  - Human Uses of the Ocean**  
The Environmental Science and Technology Center for the Ocean's Human Uses of the Ocean project provides a comprehensive overview of human activities in the ocean.
  - National Multi-Beam Bathymetry Surveys**  
The Environmental Science and Technology Center for the Ocean's National Multi-Beam Bathymetry project funded by NOAA, National Oceanographic Data Center and the University of New Hampshire.
- #### Story Maps
- Beyond the Original Intent - Seismic Survey Data**  
Long marine seismic survey data is used to create and modify boundaries within the southern of the Gulf of Mexico.
  - Discovering Deep-Sea Corals**  
Investigate marine life existing in the United States.
  - Mapping Marine Boundaries and Statutes**  
The Environmental Science and Technology Center for the Ocean's Mapping Marine Boundaries and Statutes project provides a comprehensive overview of marine boundaries and statutes.

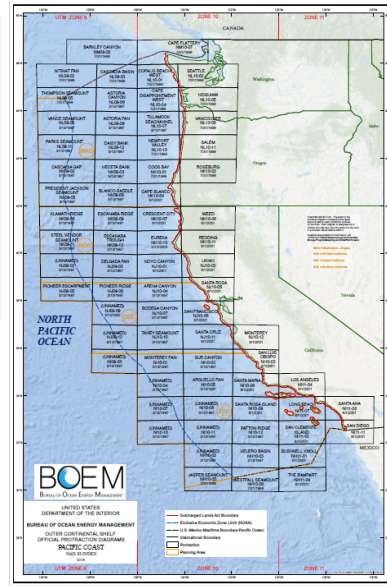
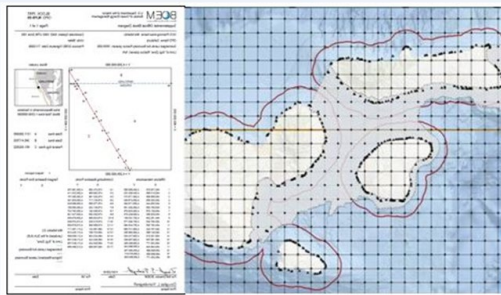
Maps and GIS Data : <https://www.boem.gov/oil-gas-energy/mapping-and-data>

- [MarineCadastr.gov](#)
- [GIS Data/Shapefiles](#)
- [OPD, SOBD, CBD, & Lease Map Diagrams](#)
- [BOEM Map Gallery](#)
- [OCS Boundary Policies and Procedures](#)
- [Additional Data Sources](#)

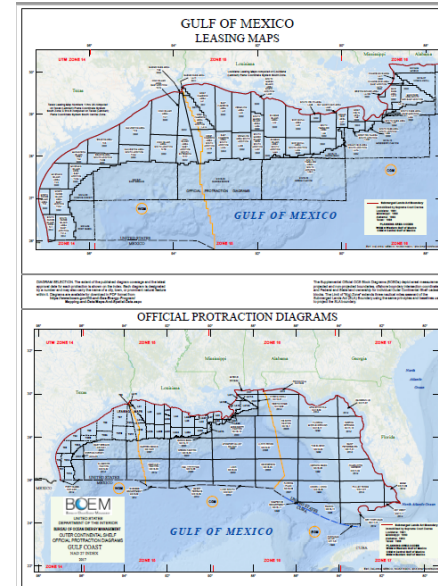


# OFFSHORE MARINE CADASTRE MAPPING ACTIVITIES

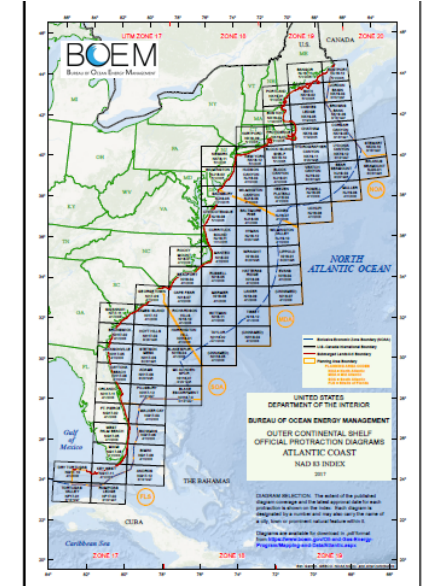
- **Generation of geospatial boundaries based on coastline and other legal definitions**
  - Submerged Lands Act (SLA) Boundary
  - Outer Continental Shelf Lands Act (OCSLA) Sec. 8(g) Revenue Zone Boundary, State Lateral Boundaries, Regional and Planning Area Boundaries
- **Generation of Leasing Maps/Protractions and Area Calculations**
  - Legal map products – Official Protraction Diagrams (OPD), Supplemental Official Block Diagrams (SOBD), Leasing Maps



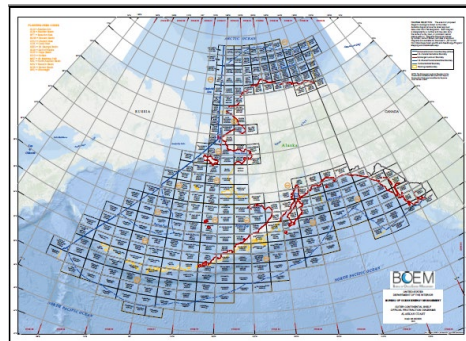
Pacific OCS Region



Gulf of Mexico OCS Region



Atlantic OCS Region






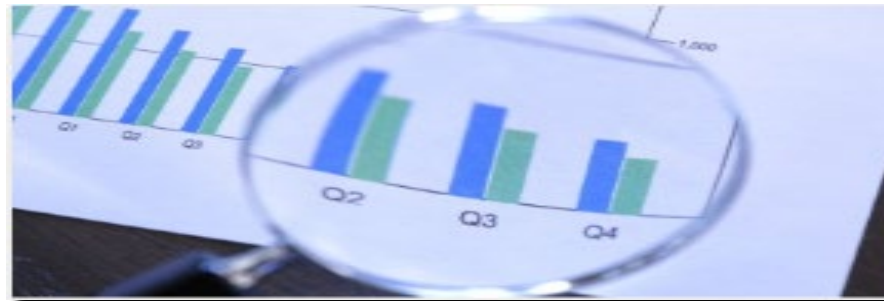
Alaska OCS Region





# FY2021 BOEM APPROPRIATIONS

- On December 27, 2020, the President signed into law the Consolidated Appropriations Act, 2021 (Public Law 116-260), providing full year appropriations for FY 2021.
- The bill funds BOEM at **\$192.815 million**,
  - which is \$4 million above the FY 2021 President's Request 
  - and \$1.204 million above the FY 2020 Enacted Budget. 
- This amount will be partially offset with the collection of offsetting rental receipts and cost recovery fees totaling
  - \$63.055 million as included within the FY 2021 President's Request.
- The bill also includes a \$2 million rescission for BOEM's net budget authority 
  - (i.e., rescission of \$2 million in prior year unobligated balances).

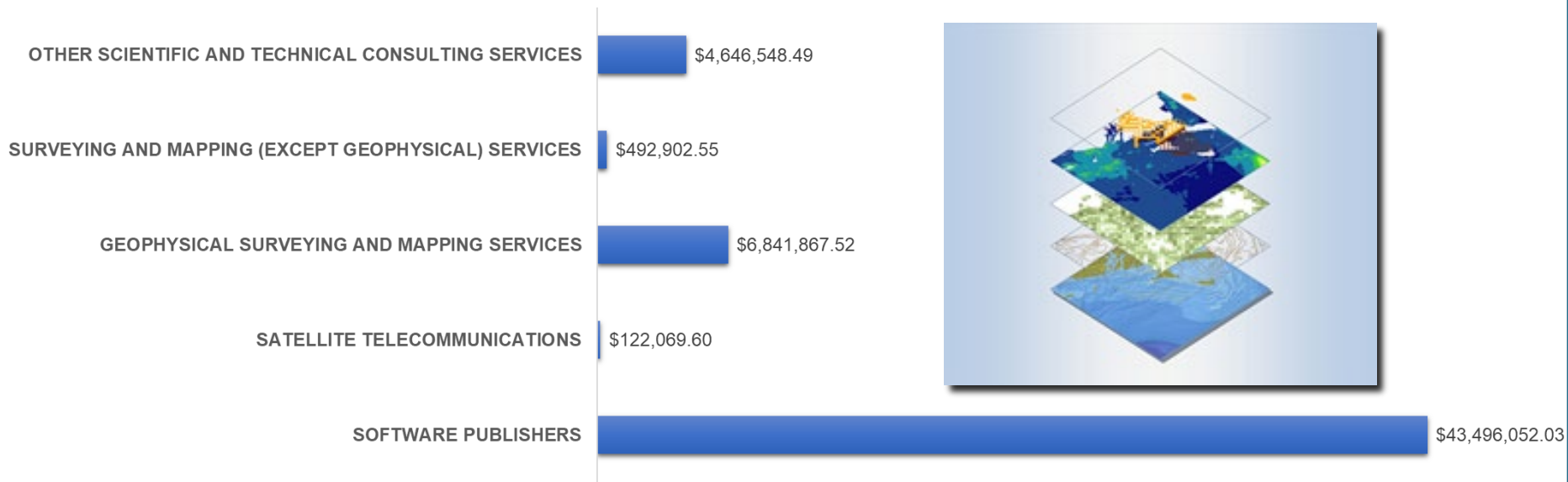




# MAPPING RELATED CONTRACT VEHICLES

- **Summary Data from: October 1, 2017 to March 23, 2021**
  - **Total Spending for the Period: \$55,599,440.19**
  - **Average Spending per year: \$18,533,146.73**
  - **BOEM Annual Budget: Approximately: 10%**

■ Base and All Options Value (Total Contract Value)



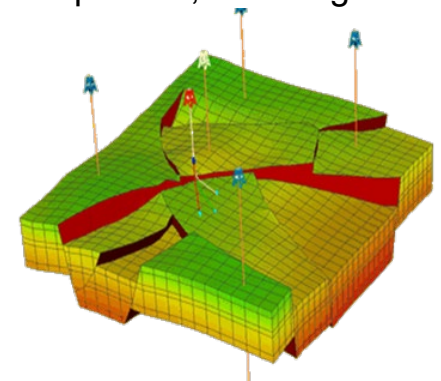
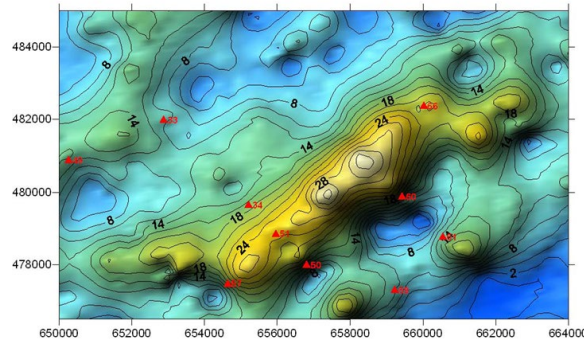
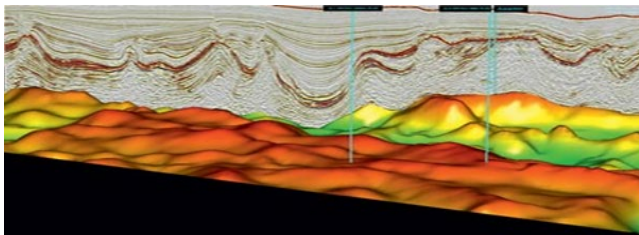
- **NAICS codes:**
  - 511210, 5417410, 541360, 541370, 541690



# 3-DIMENSIONAL ELEVATION PROGRAM (3DEP) COLLABORATION

All BOEM's various Program Offices and Regions make use of nearshore and offshore bathymetry for a variety of specific purposes.

- Predicting the likely distribution of depth-controlled benthic organisms that could be impacted by oil and gas development activities.
- Improved base maps and reference data are essential for marine minerals, renewable energy, oil and gas, and environmental management purposes.
- Marine Minerals would benefit from having high-resolution DEMs to support creation of Isopach Arc layers that represent positions of equal formation thickness of a sand body, or other geologic unit, with the thickness measured perpendicular to the seafloor.
- The identification of a geologic formation and the determination of formation thickness typically begins with geophysical surveys involving sub-bottom sonar, seismic reflection profiles, or coring at discrete locations.





# DOING BUSINESS WITH BOEM

[Acquisition Services At-a-Glance](#) – Our dedicated acquisition professionals deliver customer-focused acquisition services with the highest degree of integrity and the cooperative effort of our partners.

[Fees for Services](#)

[OCS Operation Forms](#)

## **Small Business Program** –

The Bureau's Small Business Program was established to:

1. Assist small, HUBZone small, small disadvantaged, women-owned small, veteran-owned small, and service-disabled veteran-owned small businesses, to develop, grow, and ensure their long-term success;
2. Assist large businesses to increase subcontracting opportunities for small, HUBZone small, small disadvantaged, women-owned small, veteran-owned small, and service-disabled veteran-owned small businesses.

**Procurement Business Opportunities** – Commercial opportunities are advertised on [Federal Business Opportunities](#) (FedBizOpps). Also, available at DOI.gov, is the [Forecast of Contract Opportunities](#). Some of the products/services we purchase are:

- Environmental Studies
- Environmental Consulting
- Scientific and Technical Support
- Applied R&D Services
- GIS Data
- Information Technology



# BOEM

Bureau of Ocean Energy  
Management

BOEM.gov



More Information:

Beth Wenstrom – Chief, Geospatial Services Division

Office of Strategic Resource Programs

[Beth.Wenstrom@boem.gov](mailto:Beth.Wenstrom@boem.gov)

(703) 787-1312





# BSEE

Bureau of Safety and Environmental Enforcement

## MAPPS

### MAPPS 2021 Virtual Federal Programs Conference

### Federal Agency Briefings & Liaison Meetings

### April 7, 2021

**Teresa Manovich**

Procurement Analyst

Bureau Safety and Environmental  
Enforcement

[Teresa.Manovich@bsee.gov](mailto:Teresa.Manovich@bsee.gov)

(703)787-1104

\*\* Headquarters Small Business Specialist

\*\* Acquisition Career Coordinator (COR Program)



# MISSION

- The Bureau of Safety and Environmental Enforcement works to promote safety, protect the environment, and conserve resources through vigorous regulatory oversight and enforcement. Functions include field operations including permitting and research, inspections, offshore regulatory program, oil spill response and training and environmental compliance



**BSEE Alaska Region Office**  
Anchorage, AK  
Region 11



**BSEE Pacific Region Office**  
Camarillo, CA  
Region 8



## BSEE Offices

within Department of the Interior Regions



**BSEE Headquarters Offices**  
Washington DC  
Region 1



**BSEE Headquarters Offices**  
Sterling, VA  
Region 1



**BSEE Houston Office**  
Houston, Texas  
Region 6  
District Office: Lake Jackson



**BSEE Gulf of Mexico Region Office**  
New Orleans, LA  
Region 4  
District Offices: Houma, Lafayette, Lake Charles,  
and New Orleans



# QUICK FACTS ABOUT BSEE

- **Conducts more than 20,000 inspections per year to ensure the safety of over 3,400 offshore oil and gas drilling and production facilities.**
- **Operates the only facility in the world that can test full sized oil spill response equipment with a variety of crude oils and refined petroleum products under reproducible marine conditions.**
- **Works with the Ocean Energy Safety Advisory Committee to facilitate collaboration and coordination among government, industry, and academia on issues related to offshore drilling and workplace safety, well intervention and oil spill prevention, blowout containment, and oil spill response.**
- **Conducts research regarding operational safety and pollution prevention technologies related to offshore oil, natural gas, and renewable energy exploration and development.**

15



# FUNCTIONS & TASKS RELATED TO OUR DOLLARS SPENT

- **Oil and gas permitting, facility inspections, regulations and standards development, safety research, field operations, environmental compliance and enforcement, review of operator oil spill response plans, production and development, conservation, and operating a national training center for inspectors.**
- **Offshore leasing, resource evaluation, review and administration of oil and gas exploration and development plans, mineral and renewable energy development, economic analysis.**
- **National Environmental Policy Act analysis, and environmental studies.**
- **Decision making regarding the development of domestic offshore conventional and renewable energy resources, including ensuring that appropriate consideration of the environment is given in every case.**
- **Daily Operations functions such as furniture, systems software, copier equipment, telecommunications, personnel assistance, EEO preparation services and other actions to maintain the daily operations of the bureau.**





# WHERE OUR MONEY IS SPENT

- The Acquisition Management Division (AMD) is tasked with procuring the administrative and mission support requirements for both:
  - **BSEE and BOEM.**
- The AMD also supports the financial assistance requirements for research acquisitions to colleges, state and local governments in our regional areas of Alaska, California, New Orleans, and Texas.



# DOING BUSINESS WITH BSEE

## ○ Small Business Program

- The Bureau of Safety and Environmental Enforcement (BSEE) Small Business Program was established to
  - assist small, HUBZone small, small disadvantaged, women-owned small, veteran-owned small, and service-disabled veteran-owned small businesses, to develop, grow, and ensure their long-term success;
  - continually foster an environment where small, HUBZone small, small disadvantaged, women-owned small, veteran-owned small, and service-disabled veteran-owned small businesses can compete successfully for a fair share of BSEE's procurements on their own merits; and
  - assist large businesses to increase subcontracting opportunities for small, HUBZone small, small disadvantaged, women-owned small, veteran-owned small, and service-disabled veteran-owned small businesses.

## ○ Procurement Business Opportunities

- BSEE's Acquisition Office acquires the products and services required to support Agency mission goals. Commercial opportunities are advertised on [Federal Business Opportunities](#) (FedBizOpps). Also, available at DOI.gov, is the [Forecast of Contract Opportunities](#). Some of the products/services we purchase are:
  - Engineering Services
  - Oil Spill Technology Studies
  - Information Technology
  - Consulting Services
  - Office Products





# VEHICLES WE USE TO PROCURE AND WHAT WE BUY

- **Daily Operations requirements: IT, IT infrastructure, software, hardware data storage. Furniture, office supplies. Most of the IT purchases are placed against the Government Wide Acquisition Contracts or GWAC for example NASA SEWP, other daily operations requirements are placed with GSA FSS schedule.**
- **Other open market procurements above 25K are posted at FedBizOps.**
  - You should check the GSA Schedule site for postings, and NASA SEWP daily for upcoming opportunities. Remember you must be registered in SAMS in order to do business with any government agency.
- **NAICS: IT related actions in the following codes:**
  - 334113, 334290, 334310, 334111, 423430, 443120, 511120, 541511, 541512, 518210, 519130
- **Other requirements: Research and Development acquisitions from data analysis to hands on research in the gulf of Mexico.**
- **A wide variety of Studies from the oil/gas industry; alternative energy; sea systems of life under the water. These R&D and studies requirements are ongoing and may change from year to year with the environment. Also include environmental focus, engineering, data analysis, surveying and mapping.**
- **NAICS: Support Activities actions relating codes:**
  - 213112, 541690, 541620, 541712, 541990, 926130, 561210



# VEHICLES WE USE TO PROCURE AND WHAT WE BUY

- **General and Administration NAICS activities other than then described on previous page: (This includes services and goods for daily operations such as furniture, copier equipment, movers, mail courier services (USPS, UPS, FEDEX), HR assistance, telecommunications.**
- **Last year we completed approx. 831 actions totaling \$100M+;**
  - of which 343 were to small businesses totaling \$32M+
  - equating to approx. 32% of dollars spend on small businesses.
- **You must be diligent in your efforts in keeping up with posted solicitations and where they are located. The opportunities are there.**



# HOW TO MAXIMIZE OPPORTUNITIES TO WORK WITH FEDERAL AGENCIES AND DOI

- Register with System for Award Management (SAM) for government contracting. [www.sam.gov](http://www.sam.gov)
- Work on getting onto the GSA Schedule. [www.gsa.gov](http://www.gsa.gov)
- Contact our OSDBU office and visit the website for our Procurement Forecasts. [www.doi.gov/pmb/osdbu](http://www.doi.gov/pmb/osdbu)
- Contact the SBA to learn how to partner with large businesses for prime and subcontracting possibilities.
- The Mentor Protégé Program. Contact SBA for current process. This program has just been given an overhaul by SBA. Make sure you have a large mentor already to participate with you.



# BSEE

## Bureau of Safety and Environmental Enforcement

**Thank you for your interest in doing business with  
the Department of the Interior and its' bureaus.  
We appreciate that you took time to be here today.**

**For More Information:**

**Teresa Manovich**

Procurement Analyst

Bureau Safety and Environmental  
Enforcement

[Teresa.Manovich@bsee.gov](mailto:Teresa.Manovich@bsee.gov)

(703)787-1104

**\*\* Headquarters Small Business Specialist**

**\*\* Acquisition Career Coordinator (COR Program)**

