

VOLUME 51
NUMBER 3

Potomac Valley Skiers, Inc.
WASHINGTON MARYLAND VIRGINIA

MARCH 2016

www.pvskiers.org

info@pvskiers.org

Greetings!

It has been quite a winter, and now trying to feel like spring again. Our members came out in fine style to fill Jan's home for our monthly meeting last week, glad to see each other after the "snowed-in" days of January. Two of our three club ski trips are successfully completed, and the third trip is taking place now at Madonna di Campiglio in Italy as this TOOT issue goes to press. Rosemary and the Ski Trip Committee are hard at work planning next year's trips, and would like to hear from members who may have suggestions and interest in helping to lead. Think about it!

Here at home, we are planning some spring social events for March and April to include dinner and dancing at Ft. Myer Officers' Club, a docent-led tour of the Black History Museum and lunch in Alexandria, and an urban hike on the Mall. Look for the details elsewhere in the TOOT. Melissa FitzGerald will again host the club for a Saturday afternoon meeting at her home in Reston on March 19. Note that in April we return to Tuesday evening meetings, starting with the annual meeting at Reg Heitchue's new condo party room in Reston on April 19. Please mark that date on your calendars now. That is when we approve new applicant members for active membership, and vote on the slate of ExCom officers for the next terms.

On February 23, ExCom received notice from Bob Kramer that he must resign from his position as Vice President of the club due to travel schedule and other factors. Thank you, Bob, for your contributions to our club leadership last year. I know you are enjoying the snow and skiing at Vail right now! ExCom will be seeking a candidate for appointment to complete this vacated term.

We'll see you at the next meeting at Melissa FitzGerald's and other events.

Cheers! *Carolyn*

Monthly Meeting

Saturday, March 19, 2016
2:00 PM

At Melissa FitzGerald's home
2520 Farrier Ln.
Reston, VA 20191

thediellhouse@gmail.com
703-476-9259



Directions

From the Beltway (I-495)

Take the Dulles Toll Road (Rte 267) West to exit 12, Reston Parkway. Turn left onto Reston Parkway.

Go about two miles, and turn left at the light onto Lawyers Road. (note that if you turn left, the street is Lawyers Road; if you turn right, the street is McLearen Road). Take the first left onto Farrier Lane. Melissa's house is the third on the left.

From the South on Fairfax County Parkway north

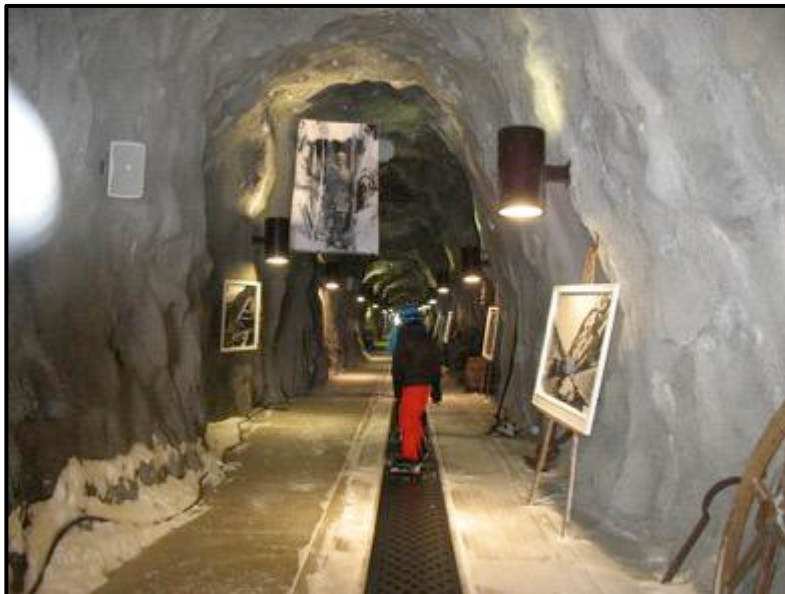
Turn right onto Fox Mill Road. Turn right onto Reston Parkway. Turn left onto Lawyers Road. Take the first left onto Farrier Lane. Melissa's house is the third on the left.



THE NEW PVS WEBSITE IS UP AND RUNNING

Courtesy of Mary Ellena Ward

CHECK IT OUT!!



The tunnel between Snowbird and Alta, Utah

CARE TO DANCE?



Joe Jevcak is sponsoring a PVS outing on Saturday, March 5, at the Fort Myer Officers' Club, Jackson Avenue, Arlington, VA, at 6:30 PM. It includes dinner and dancing to the Rick "Hollywood" Thompson 4-piece band.

Dinner selections range from chicken salad to trout, salmon, chicken, filet mignon, lamb chops, and lobster. The meals are among the most outstanding in the Washington area. Dress code is jacket and tie for men and comparable attire for women. All car occupants must provide a government ID, such as a driver's license.



Directions: Fort Myer can be entered from Washington Blvd. (RT 27) at 2nd Street, through the Hatfield Gate. After passing thru Security turn right, turn left at the first street, then turn left at the first street (Pershing Drive), turn right at the end (Sheridan Avenue), continue to the end and turn right at Jackson Avenue, turn right into the parking lot. The Officers' Club is across the street.

Dinner is in the Fife and Drum dining room on the first floor. Ask for the PVS table. You may RSVP by email and provide number of attendees to:

Joe Jevcak
joejev@verizon.net



Nominating Committee Report for PVS Officers (2016 - 2017)

The Nominating Committee presents the following list of members, who have agreed to be candidates, for the positions of officers and executive board members. The election will be held on April 19 at the annual meeting.

<p align="center"><u>Candidates for PVS Officers & Board Members,</u> for 2016-2017</p> <p>President: Carolyn DeVilbiss† ExCom: Barry Lake*</p> <p>Vice President (Vacant) ExCom: John H. Smith**</p> <p> ExCom: Ellie Thayer***</p> <p>Additional nominations may be made by the signatures of any five active members in good standing and must be presented at a business meeting at least one month prior to the election, which will be held on April 19, 2016</p>	<p>Submitted by the Nominating Committee:</p> <p>Kerry Hines (Chair)</p> <p>John Holt</p> <p>Inge Lesjak</p> <p>Sue Lyon</p> <p>Nancy McKinley</p> <p>Eloise Strand</p>
--	---

† <<http://pvskiers.org/TOOT/2010-2019/Mar15.pdf#page=5>>

* <<http://pvskiers.org/TOOT/2010-2019/16-02.pdf#page=6>>

** & *** <<http://pvskiers.org/TOOT/2010-2019/16-02.pdf#page=7>>

A MARCH OUTING TO THE THE BLACK HISTORY MUSEUM

MARCH 23 - ALEXANDRIA, VA



All PVSers who are interested in history with a local flavor are invited to join in a trip to the Alexandria Black History Museum on Wednesday, March 23. This is one of seven museums under the Office of Historic Alexandria and is located at 902 Wythe Street. (Suggested donation for the visit is \$2.)

We will have an overview given by the museum director and a tour of the two exhibit rooms. There is also a short video that we can view. Our tour begins at 10:30 AM. There is parking on streets nearby.

There will be suggested places in the area that we can go for lunch. If the weather is pleasant, then there is a cemetery referenced in the museum that we can visit as well as many other points of historic interest in the city. Maps are available.

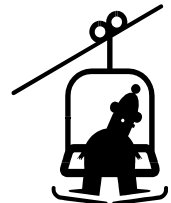
Directions: **From I-495**, take exit 177B, US RT 1 toward Alexandria. Continue to Wythe Street, which is the next street after Pendleton. Turn right onto Wythe and 902 is on the right at the end of the block. **From DC**, use I-395 to US RT 1 South (Jefferson Davis Highway). Turn left on Wythe, the next street after Madison Street. Cross Patrick Street and 902 is in the next block.

I am a museum volunteer and you may contact me with any questions about this trip.

Maryann Rozzell
703-280-1171

PVS LOCAL SKIING

There is snow. Indeed, local skiing is the best that it has been in many years. Four or five skiers have congregated each week since the second week in January.



We normally ski at Liberty Mountain or Whitetail during the week. The arrangements need to be quite informal because we can't be sure of the conditions until a few days ahead of time. We normally check the latest weather conditions on Saturday or Sunday to decide which days are suitable, which day people prefer, and where is the best place to go. An email notice is sent out by Sunday of each week to people who have indicated that they are interested in joining us.

For those who want to car pool (recommended), we meet in the morning in Gaithersburg. The directions and meeting time are posted in each week's announcement. I have the current email list from last year of people who are interested in local skiing. If you wish to be added to this local skiing list, please contact me.

Contact John Smith at:

Home – 301-299-8376

Cell – 301-461-2143

Email – johnsmith@juno.com





Join us for an Urban Hike!

Friday, April 15 at 10:00 am

Walk the National Mall!

Face it – you haven't walked on the National Mall in a long time – and even if you have, you know you love our nation's beautiful front yard in the springtime! Starting and ending at the Washington Monument, this easy (and flat!) hike is roughly 4.0 miles. It's a lovely round trip that will take us to these and other famous sites:

- Vietnam Veterans Memorial
 - World War II Memorial
 - Lincoln Memorial
- Korean War Veterans Memorial
- Martin Luther King Memorial
 - FDR Memorial
- around the Tidal Basin to the Jefferson Memorial

After taking in the sites on our hike, those who are interested will head over to the stunning Hamilton (in the old Garfinckel's building) for lunch.

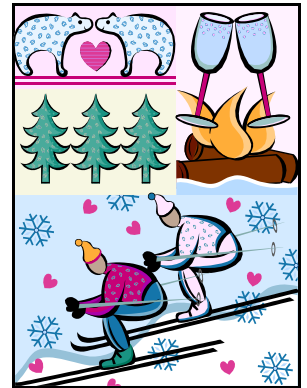
We meet at the 15th street side of the Washington Monument by the concrete kiosk (with restrooms and souvenirs). It's a convenient block or two from the Smithsonian Metro Stop.

Call or email Nancy McKinley to sign up so that we can be on the lookout for you. Also note if you are planning on lunch with us.

703-595-8375 OR nancymckin@gmail.com

SKI TALK MARCH 2016

This was my year to demo new skis. While I have no issues with my current skis, I keep reading and hearing about the new wider skis. Brian Eardley, at Ski Center, says the most popular skis have a waist of 80-90 millimeters. My Volkl's 76 mm waist does not meet that standard. After receiving a coupon from Snowmass for a day of free demos, I decided to go for it. I did my research before going on the trip. I had a list of the "best" women's all mountain skis for the year, which included the Volkl Kenja, Blizzard Black Pearl and a few others. On my first day of skiing, I took a mountain tour and the guide was raving about her Head Total Joy skis, so I put them on my list.



The next day, armed with resolve to find the perfect ski, I headed to the ski shop to begin my search. The shops make it easy to test skis: fill out a form, pay your fees (if any), tell the clerk which ski you want, give her one of your ski boots to adjust the bindings, and five minutes later you are walking out the door with the skis. This shop had a branch near the gondola so after three runs on the same slope I skied to the shop, swapped skis and went up on the gondola for another three runs. I was hoping to demo four skis but it took a good part of the day to test three skis. At the end of the day, I was more confused than ever. I thought I liked the Kenja, but the guy in the ski shop insisted that it was only because of the order I tested the skis (second) that I liked it. He insisted that the Black Pearl was the best women's ski, and I should come back the next day and try again. A few days later I did just that but still no favorite!



So, the saga continued. We shipped our skis from Snowmass to Snowbird, but they did not arrive when we did so I had to rent. Now I had an opportunity to demo more skis in powder! The staff in the shops all had favorites, so I tried more skis for three days. By this time, I was really missing my old tried and true skis. I was hoping they would arrive the day of the BRSC ski race, but they did not. The course was steep and icy and I was afraid my fat skis would not hold on the ice. After slipping and sliding down the course with a really slow time, I knew I did not want these new skis. The next day, my skis arrived, and I finished the week skiing comfortably. The quest for new skis is off for the moment.

According to a recent article in the Washington Post, "Skis and Knees," some studies have found that it takes greater force to edge wider skis, which could result in more degenerative knee injuries over time. Orthopedists are seeing more patients with sore and torn knee ligaments as a result of using fat skis on hard-packed powder. From my research of one, I am convinced that I cannot handle wider skis!

We are working on our trips for next year. Please send me your ideas and recommendations for future ski trips.

Also, you may want to subscribe to **Seniorsskiing.com**, a website containing articles and general information for skiers over 50.

Rosemary Schwartzbard
rosemaryschw@gmail.com

BOT <www.bestoftimeskiclub.org> is going to Aspen, CO, and staying at the Mountain Chalet in downtown Aspen. Interested individuals should make their reservations directly with the Chalet at 888-925-7797, ext. 772 or at res@mca.travel; then advise trip leader, Annette Kaufman, 561-750-7456, of your reservation.

Aspen, Colorado
3/5/16 - 3/12/16 (Best of Times Ski Club)



Ski Technique Lessons by Cara Jablon



Many of the PVS members who went on the Snowbird trip found the mountain a little imposing – and it was! Signage on some slopes was minimal to nonexistent. A sign might indicate a green catwalk, only to surprise the skier with a dead-end at a steep, powdery bump run (that was probably only a blue run by Snowbird standards). Snowy weather almost every day didn't help the visibility or comfort level.

What is the best way to deal with such a situation – take a lesson! I had the good fortune to have two excellent lessons on this trip – first, an afternoon group lesson at Alta (a somewhat more user-friendly mountain adjacent to Snowbird) and then a morning “group” lesson at Snowbird. The Alta lesson was taught by Sammy, a seasoned, garrulous 74-year old, who wasted no time in giving me and the other student a run-down of his approach to skiing the powder, bumps, and steeps.

Among the corrections that he made to my technique were the following: (1) stay way more forward with your arms more forward; (2) plant your pole to the side of the ski and downhill; and (3) make sure your skis are flat as you turn (edge to flat to edge).

Sammy also had a number of approaches for skiing deep powder: (1) keep your skis fairly close together (no more than hip width); (2) weight the skis 50/50; (3) do not edge; (4) use gentle down and up motions; and (5) plant your pole early (near the tip of the ski) and then come around in a “Punch” with the other arm.



Finally, for those of us who fall apart on the steeps, he had a very interesting technique – a series of linked hockey stops with a pole plant downhill in the center of the ski. Believe it or not, this technique actually works, and is an excellent survival technique to have in your “tool kit.”

After being a little overwhelmed by all that Sammy tried to impart, I signed up for a group lesson the next morning at Snowbird. Much to my delight, my “group” was just me. My instructor was a Brit named Ian, who reinforced the advice given by Sammy, and gave me an opportunity to practice the techniques that I had learned the previous day. We worked on “compression” turns on a black bump run on the lower part of the mountain. Much to my surprise, I was able to get more forward, plant my pole downhill in the middle of my ski, and keep my skis flat as I made my turns. The result was more rounded turns in the bumps and a much greater comfort level on the steeps. Ian also suggested another approach for getting into a steep slope – a “J” turn, which involves entering a steep slope by going down the fall line, followed by an immediate turn – for me, this will only work if the slope is not too steep. For the really wicked steeps, I like the hockey stop turn approach.



All in all, I was pleased with the improvement in my technique, and I am hoping for another opportunity to ski this season. Whatever your skill level, lessons can really help to improve your technique and comfort level. You may not get an “Aha” moment from every instructor, but you will likely learn something of value. Don't pass up the opportunity to improve, particularly when the snow and weather conditions give you pause and don't “call” you to the slopes.





SNOWBIRD TRIP January 30 – February 6, 2016



The Blue Ridge Ski Council’s Winter Carnival to Snowbird in Utah’s Wasatch Mountains was a great trip. A total of 283 BRSC club members descended on The Cliff Lodge at the Snowbird Ski Resort on January 30, 2016, for a seven-day ski and spa adventure.

Fourteen travelers from PVS, participated in the Winter Carnival, and were led by Mike and Eloise Strand. Some members of the PVS group arrived at the Salt Lake

Airport in time for a mini-blizzard, which made travel up Little Cottonwood Canyon challenging for the bus drivers, including tire chains, slippery roads, and dead-end parking lots.



Back in the 19th century, the Snowbird ski area was the center of silver mining in the Wasatch Mountains. A US Army soldier first prospected for silver there in 1869, and Little Cottonwood Canyon became one of the largest producers of silver ore. Many of the ski runs at Snowbird are named by the silver mining industry, such as Big Emma.



Today, Snowbird’s nickname is “Steep and Deep” ... and it lived up to its reputation. The *PVS Troupe of Nine* braved the elements and tough terrain, and now can claim they are official veterans (without injury) of Snowbird and Alta. Hurray to the intrepid band of skiers including Bob and Cara Jablon, Dick and Rosemary Schwartzbard, Mary Ward, Barry Lake, Bing VanNuys, Nancy McKinley, Inge Lesjak, and David Payne. Bing’s roommate, Frank Penaranda, a member of the Potomac Adventure and Ski Club, joined the troupe. Five (not so brave) PVS trip members opted to enjoy The Spa at the Cliff Lodge (Mike and Eloise Strand, Kathy Lake, Susan Payne, and Jim Slack).

A beautiful day #1 on the slopes and in The Cliff Spa was followed by the first of three fun Blue Ridge Ski Council receptions and dinners. The second day on the slopes brought snow, wind and cold temperatures, so the PVS skiers decided to give the ski runs at Alta a shot. Highlight of the



day was a tour through the “Snowbird Tunnel,” a 600-foot moving walkway through a tunnel connecting the Snowbird and Alta Ski areas. The only ski tunnel in North America; it is located at a 10,518-foot elevation and has a moving walkway that takes skiers and boarders from the Peruvian to Mineral Basin areas. At the end of the tunnel the skiers are dumped into a huge, magnificent bowl and a number of great blue runs and plenty of black diamonds. Those PVS skiers who traveled the moving walkway through the tunnel told of the interesting historic mining paraphernalia and photos lining the walls, but we really know

that "what happens in the tunnel stays in the tunnel." The snow continued throughout the day; so, the entire PVS gang headed to the Catana Restaurant for an evening of Mexican food. There's nothing like a Margarita to solve the disappointment of a less than ideal ski day!



Fresh snow each morning and cold temperatures were the scene for the remainder of the week, but the hardy *Troupe of 10* continued to venture out



and play in the fresh powder. The skiers frequently crossed between the Snowbird and Alta ski areas via both the Snowbird tunnel and the infamous "gate crossing." It was a tense moment when it was questionable whether Dick Schwartzbard had the necessary credentials to cross the border back into Snowbird, but he used his keen intelligence background to get back onto his home turf.



Just as challenging as the ski trails was the transportation between the ski areas. Buses packed to the max and random schedules made it difficult at times, but Dick Schwartzbard learned that hitch-hiking on the road was the most effective way to catch a ride back to the Cliff Lodge.

The final night of the Western Winter Carnival included a dinner, awards ceremony acknowledging the winners of the various competitions, and dancing. PVS's own Cara Jablon was among the gold medal winners recognized as among the fastest skiers in the Blue Ridge Ski Council. *Congratulations Cara!!*

--Submitted by Susan Payne



February 20, 2016 Monthly Meeting

at the Home of Jan Marx

For all of us who love to ski, snow is a very good thing. Unless of course, it postpones a PVS meeting and party for a month! Our Snowzilla January meeting at Jan Marx' home in Springfield had to be rescheduled for Saturday, February 20. We didn't have to plow through snow banks; indeed, our temperatures hovered in the 60s!! We had a great turnout with 46 people making the trip. (We had three guests and one applicant member.)



The table was filled with foods that were delicious and plentiful: such as shrimp, baby quiches, choices of cheeses, dips and chips, and healthy veggies. Two ladies were sporting wrist casts so we hope they heal quickly! Conversation centered on adventures of past ski trips such as Colorado, Utah, and local skiing, and on those trips that were coming up, especially Italy.

Our business meeting focused on exciting activities to come, with encouragement for all to add these events to your calendars.

Join me in a special thank you to Jan for hosting a lovely gathering for our members.

--by JanaLee Sponberg



Members' Corner



By J. David Warthen, Jr.
dwarthen@verizon.net

PVS Camaraderie Prevails:

At the recent PVS February General Meeting, PVS camaraderie was observed when 46 PVSers, filled with cabin fever after the blizzard of 2016, gathered for social interaction. Everyone was delighted to see one other, enjoying food, drink, and fellowship. The sunny afternoon meeting was perfect as old friends caught up on happenings of winter in Metro DC, and the adventures of recent ski trips past.



Louann E., Dave W., Jan M., Brian M., Dave & Carolyn D., Jackie R.

Friendships that have developed over the years are not forgotten. This is so evident in the picture of friends enjoying a perfect day of skiing in the Rockies many years ago:

I encourage you to join your fellow skiers, by coming out to a monthly meeting when you are able. Meetings are held in PVS homes at various places around the Beltway at varying times. Carpooling is available; contact Inge Lesjak, lesjak.inge@gmail.com.

--J. D. Warthen

TOOT Distribution to 162 Members:

-pdf: 139; USPS: 3

Thanks to:

- TOOT Coordinator - E. Thayer
- TOOT Layout Editor – J. Marx
- TOOT USPS – B. Leonhardt, J. Read, & L. Triau
- Electronic TOOT – J. D. Warthen

Roster Changes (notify-dwarthen@verizon.net)

- Alice McNulty (**Reinstated Associate Individual**)
mcnulty@optonline.net
- Royce Kneece & Marsha Patrick (**New Applicant Couple**) roycekn@gmail.com & mpatrick077@gmail.com
- Sylvia Lukens (**Reinstated Active Individual**)
sylvialukens@gmail.com
- Ron Mileikowsky (**New e-mail address**)
ronmil@yahoo.com
- Patricia Lesjak (**New Applicant Individual**)
plesjak@cox.net
- Bob & Jill Nelson (**New Applicant Couple**)
nelson@umd.edu & jillwnelson7@gmail.com

PVS is delighted to see an increase in membership after the usual decline in membership after the biennial dues period renewal. We welcome new applicant members: Royce Kneece, Patricia Lesjak, and Bob & Jill Nelson. We also welcome the reinstatements of Sylvia Lukens and Alice McNulty.

Our membership stands at 162: 126 Active Members, 8 Applicant Members, 18 Absentee Members, 9 Associate Members, and 1 Honorary Member.

--J. D. Warthen

Private reunion in Sarasota, Florida of PVSers:



Jack & Linda Sloan, Melissa FitzGerald, & Susan & David Payne

IN MEMORIAM - Nancy Garrett
October 15, 1938 to February 19, 2016



Nancy Garrett died in her home on February 19, 2016 at the age of 77. She was a PVS member for 29 years, from 1982 to 2011. She is survived by her husband, Ray Garrett, who was also a PVS member. A memorial service was held at the Burke United Methodist Church on February 28, 2016. Inurnment will take place at Arlington National Cemetery at a later date.

The following are excerpts from her obituary published in the Washington Post on February 24:

Nancy worked in her first career as a Home Economist and also taught Home Economics. Later, she transitioned to a 2nd career as a Program Manager for the Federal Aviation Administration (FAA), retiring from there in 2001. Ray's 1st career in the United States Air Force and 2nd career with the FAA took them many places, including Texas, Oklahoma, South Carolina, Guam, Illinois, and Virginia. Wherever she lived, Nancy was the epitome of the gracious Southern lady. A favorite pastime for Nancy and Ray was boating on the "War Eagle" (I, II, III, IV, and V). . . . Another favorite pastime was skiing. Nancy and Ray enjoyed many outings with the Potomac Valley Skiers and [her sorority] group. Nancy is survived by her loving husband, Ray, son, John Raymond, Jr., (Lauri), grandson Joshua Douglas and granddaughter Danielle Christine, and son Mark Anderson.

In the March 1988 TOOT, Lu Beale penned her profile when she was a candidate for ExCom:

Nancy Garrett is not only a super skier but since introducing her delightful Cook's Corner in TOOT is now the de facto chef in a club noted for talented cooks. She is also an experienced hiker adding merriment to many a PVS climb, which she says goes on to lose pounds enough to enable her to properly conduct her cooking and sampling duties.

Born in Tennessee and raised in Alabama, Nancy graduated from Auburn University where she met her future husband Ray when both were freshmen. After graduation they married and eventually migrated to Washington (Ray with the FAA) where, except for a 3-year assignment in Chicago, they have been ever since. They live in Burke, VA. Two sons, one married, live nearby. After 7 years working in the Department of the Army, Nancy changed jobs last year and now works in the Budget Office of the FAA.

The family's first skiing experience was at Seven Springs in 1973. Says Nancy, "our instructor took us to the top of a blue trail, taught us to snow-plow and then left us. Three hours later, Number 2 son and I made it to the bottom of the mountain – totally disinterested in ever skiing again." However, the next day they gave it "one more try" and soon it was the old familiar story! The whole family was hopelessly addicted.

Ray and Nancy first skied with PVS in 1982 with the Marxes. Janet is a sorority sister and persuaded Nancy to join the club. Hooray for Jan!

Nancy says her most memorable ski experience was during a heavy snowstorm at Alta. "We had never before skied in deep powder so Dick Clark took Ray and me all over the mountain as snow continued to fall. Such fun! Especially with Dick as teacher and guide!"

Nancy can't name a favorite ski area. Actually most any place she skis becomes notable because she herself brings so much joy to the sport.

In her husband Ray's profile a few years later (February 1995 TOOT), he added that Nancy says that her most memorable ski adventure was the Double Black Diamond at Alta where "we inadvertently skied with Ken and Myra Evans. We survived, but the hill looked like a garage sale."

Jan fondly reminisces that PVS was the winner when Ray and Nancy joined. They hosted events, such as parties on their boat docked at Occoquan and Kentucky Derby parties, and also organized local ski trips. For many years Nancy wrote "The Cook's Corner" for TOOT. It had recipes of dishes that other PVSers had brought to past events as well as her own. She had a delightful sense of humor and was always upbeat. Her cookbook is on the PVS website.



NOTE: The Knee is absent this month.

PVS Calendar 2016:

Mar	5	Sat	Dinner and Dancing, 6:30 PM, Jevcak, Ft. Meyer, VA
Mar	19	Sat	Monthly Meeting, 2:00 PM, FitzGerald, Reston, VA
Mar	22	Tue	ExCom, 7:30 PM, Schwartzbards, Arlington, VA
Mar	23	Wed	Black History Museum, 10:30 AM, Rozzell, Alexandria, VA
Apr	15	Fri	Urban Hike on the Mall, 10:00 AM, N. McKinley, DC
Apr	19	Tue	Annual Meeting, 7:30 PM, Heitchue, Reston, VA
Apr	26	Tue	ExCom Meeting, 7:30 PM, DeVilbiss, Alexandria, VA
Apr	29	Fri	Paul Weber Spring Ski Show, 6:30-9:00 PM, Marriott Tysons Corner, R. Schwartzbard, VA < http://www.prwtravelshows.com/DC.htm >
May	15	Sun	Eclipse Chamber Music Concert, 3:00 PM, McKinleys, Alexandria, VA
May	17	Tue	Monthly Meeting, 7:30 PM, TBD
June	11	Sat	Signature Theater, <u>La Cage aux Folles</u> , 2:00 PM, McKinleys, Arlington, VA



PVS Ski Trips 2016:



February 26-March 6, 2016: PVS/BRSC Eurofest 2016, Italy, Madonna Di Campiglio (Inge Lesjak)

Useful Ski "Links"

Potomac Valley Skiers	www.potomacvalleyski.org
BRSC Sanctioned Trips	www.skicouncil.com/tripsbydate.htm
DC Ski Online News.....	www.dcski.com
Best of Times Ski Club.....	www.bestoftimeskiclub.org >Ski Trips

ExCom

Officers:	Chairpersons:
President – <i>Carolyn DeVilbiss</i>	Ski Trip Committee – <i>Rosemary Schwartzbard</i>
Vice President – <i>Vacant</i>	Events – <i>Ray McKinley</i>
Secretary – <i>Ellie Thayer</i>	Membership Records – <i>Dave Warthen</i>
Treasurer – <i>Dick Schwartzbard</i>	Membership PR Reps – <i>Inge Lesjak & Marianne Sophonis</i>
Ex Officio - <i>Nancy McKinley</i>	TOOT Coordinator – <i>Ellie Thayer</i>
Board Members:	TOOT Layout Editors – <i>Jan Marx, Marvin Hass, & Dave Warthen</i>
<u>First Term:</u>	TOOT (E-Distribution) – <i>Dave Warthen</i>
<i>Herb Bennett</i>	TOOT (USPS Distribution) – <i>Barb Leonhard, June Read, Liz Triau</i>
<i>Marna Blanchette</i>	Webmaster – <i>Mary Ward</i>
<i>Nancy Pigman</i>	Meeting Records – <i>Sue Lyon</i>
<u>Second Term:</u>	Historian – <i>Jan Marx</i>
<i>Reg Heitchue (1-year only)</i>	
<i>Inge Lesjak</i>	
<i>Ellie Thayer</i>	