

The Fire Trail

March 2010

PAC FIRE
AUSTRALIA

EXCITING NEW PRODUCTS – COMING SOON!!



PAC FIRE AUSTRALIA

HEAD OFFICE: Address Unit 1 / 28 Burnside Road, Hallmarc Business Park, Yatala QLD 4207
Phone 1300 73 1800 Fax (07) 3441 7177 Email sales@pacfire.com.au

SA OFFICE: Address 1 Marlow Road, KESWICK SA 5035
Phone 1300 73 1800 (SA & NT only) or (08) 8297 1477 Fax (08) 8351 0362
Email todd@pacfire.com.au

www.pacfire.com.au

MASTER A / B FOAM

Australian made and owned, MASTER A/B is completely bio-degradable and non-toxic.

MASTER A/B is your first line of attack with all A and B class fires. When proportioned up to 1% **MASTER A/B** is deeper penetrating into wood and all class A materials, which wets faster than water alone with the versatility of the extinguishment of class 'B' hydrocarbon fires. When it is proportioned at 3% and again at 6% this will provide rapid fire control and extinguishment to all Polar-solvent fires.

MASTER A/B has the ability to flow rapidly and freely across the surface of any flammable liquid fuel. With **MASTER A/B** and its modern technologies all flammable vapours are locked in under a tight film combined with a molecular structure of tightly formed bubbles and utilising the latest polysaccharide technologies. **MASTER A/B** can be applied through conventional proportioning equipment, from in line injection / education to around the pump systems. **MASTER A/B** can also be applied with standard fire nozzles, air aspirating foam attachments or nozzles.

MASTER A / B - It Works!

When proportioned up to 1%

- Penetrates into wood and all class A materials
- Absorbs the heat from the fuel for more protection.
- Cools the fire by controlled release of encapsulated water from the foam to the fire.

When proportioned up to 3%

- Rapid extinguishment of class 'B' hydrocarbon fires
- All flammable vapors are locked in under a dynamic molecular structure utilising the latest polysaccharide technologies.
- Completely bio-degradable and non-toxic.

When proportioned up to 6%

- Rapid extinguishment of class 'B' Polarsolvent fires
- All flammable vapours are locked in under a dynamic molecular structure utilising the latest polysaccharide technologies.
- Completely bio-degradable and non-toxic.

MASTER A / B - Packaging

MASTER A / B comes to you in easily identifiable pails with convenient colour coding and easy to read labelling, giving you the right product for the correct fire every time. Available in colour coded 20L pails, 205L Drums or 1000L Bulk Containers.

MASTER A / B - Application

With MASTER A / B you can simply use conventional proportioning equipment, from in line injection / education to around the pump. MASTER A / B can be used with standard fire nozzles, air aspirating foam attachments or nozzles.

Rates of Application listed below:

Application to class 'A' materials

- MOP UP 0.25%
- INITIAL 0.75%
- PROTECTION 1.0%

Application to class 'B' hydrocarbon fires

- HYDROCARBON FIRES 3.0%

Application to class 'B' Polar-solvent fires

- POLAR-SOLVENT FIRES 6.0%



RECON SCOUT® RESCUE

Counter-terrorism surveillance, narcotics raids, hostage rescue, barricaded suspects, explosives. Each day your people are prepared to confront dangerous environments harboring a multitude of unknown risks.

- The Recon Scout® Rescue is just 17.7cm (7 inches) long and weighs just 450gram (1 lb), making it extremely easy to carry and throw.
- Deploying the Rescue takes less than 15 seconds and requires no special training.
- The device is equipped with sophisticated infrared optical systems that can see in complete darkness and automatically turn on when the ambient light is low.
- The Rescue transmits clear, crisp video through walls and debris up to 30m (100 feet) to a handheld Operator Control Unit (OCU) or up to 300m (1,000 feet) to a Command Monitoring Station.
- The device can withstand throws of 36.5m (120 feet) and it can be tossed through windows or doors, over walls, or down a flight of stairs.
- It can also be dropped down a vertical shaft or into a void using a provided tether.

The Rescue may be specified in either of two operating frequencies, allowing you to use two robots in the same environment at the same time.



NRG LAND BUMP HELMET CE-EN 1078

The NRG land bump helmet has been designed around the professional user who currently uses a product developed for recreational and sports use. By reducing the weight and adding the many important modifications such as zero reflective matt black finish, hard wearing goggle strap, light stick holder and unbeatable air circulation system we have produced the ultimate professional helmet. Each helmet comes in a durable mesh bag with ID strip so helmets can be quickly identifiable and kept safe. Customised stickers are available at an extra cost.

The NRG LAND bump helmet is certified to CE-EN1078 safety helmet standards.

FRONT VIEW

SIDE VIEW

BACK VIEW



FEATURES

 CE-EN 1078



Complete matt black non reflective finish

Matt black rivets

Mesh net across all air vents to stop debris and insects



9 Air holes to keep the helmet cool and maximise air in-take.

Durable goggle strap

Light stick holder

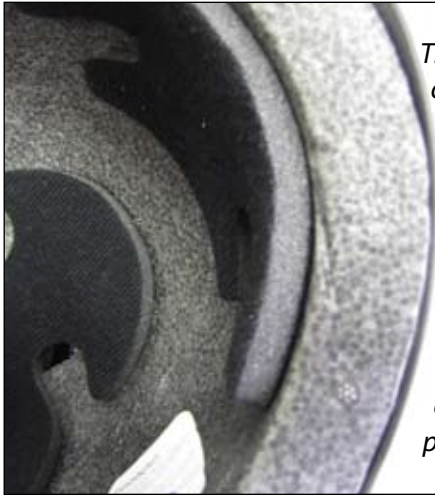
Side air vents to maximise air circulation

Removable chin guards – soft and hard for maximum protection and comfort

- Light stick holder
- Hi Visibility reflective strips available on request
- Mesh net protection across all air vents
- 2 Removable chin protectors – hard and soft
- Total Matt black - zero reflective surface.
(Other colours available depending on quantity ordered)
- Velcro patch
- Durable goggle strap
- 9 Air hole cooling system to maximise air in-take
- Side vents to maximise air circulation

TECHNOLOGY

CE CE-EN 1078



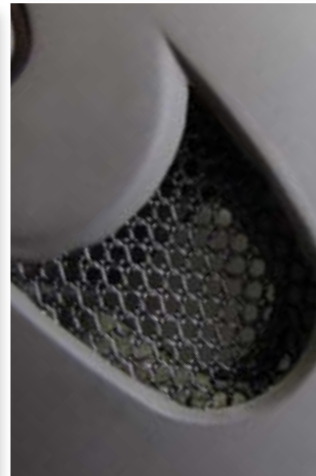
The lightweight durable interior foam offers the wearer maximum protection and comfort. The foam is designed to mould to your head to promote high levels of comfort and protection.



For the professional user the entire surface is matt black with zero reflective surfaces making the product stealth for covert use.



NRG has designed and developed a unique hard wearing goggle strap for the professional user. This allows you to quickly remove your goggles without losing them. The goggle strap also includes our unique light stick holder which holds Illumiglow 3.8 cm sticks. This makes it simple for you to mark each other for quick and clear identification.



All 9 air holes and the side vents are protected by our mesh net to stop both insects and debris from entering the helmet. The mesh net is light so as not to add any additional weight to the helmet.

SIZING

For the NRG LAND helmet we have produced a unique head lock fitting system to reduce the amount of movement when the helmet is being worn. The fitting system was designed with professional users in mind giving ample room for skull caps

Small - Medium = 51 - 56 cm
Medium - Large = 53 - 59 cm
Large - X Large = 55 - 61 cm

NRG LAND BUMP HELMET SPECIFICATIONS

SHELL – Strong injection Mould (ABS)	LINER – Lightweight Protective foam interior
INTERIOR – Full Interior surround cushioning	FIT SYSTEM – Extream Fit System
COLOUR – Matt Black (Non Reflective surfaces)	VENTS – 9 Mesh ventilation and side vents
CERTIFICATION – CE CE-EN 1078 / ISO 9001	WEIGHT – NRG LAND weighs 380 - 395g

NRG SWIFT WATER BUMP HELMET

CE CE-EN 1385

The NRG Swift Water bump helmet has been designed around the professional user who currently uses a product developed for recreational and sports use. By reducing the weight and adding the many important modifications such as zero reflective matt black finish, hard wearing goggle strap, light stick holder and unbeatable air circulation system we have produced the ultimate professional helmet. Each helmet comes in a durable mesh bag with ID strip so helmets can be quickly identifiable and kept safe.

The NRG Swift Water bump helmet is certified to CE-EN1385 safety helmet standards.



FEATURES

CE CE-EN 1385

- Complete matt black non reflective finish
- Matt black rivets
- Mesh net across all air vents to stop debris and insects
- Durable goggle strap
- Light stick holder
- Bungs set for all 11 air vents for cold weather conditions
- NRG adjustable head band system
- Ear protection guards

- NRG adjustable head band system for ultimate comfort
- Mesh net protection across all air vents
- Removable chin strap
 - Air Hole bungs
 - Velcro patch
- Durable goggle strap
- 11 Air vents for excellent air circulation
- Removable Light stick holder
 - Ear protectors
- Hi Visibility reflective strips available on request

TECHNOLOGY

CE CE-EN 1385



The lightweight durable interior foam offers the wearer maximum protection and comfort. The foam is designed to mould to your head to promote high levels of comfort and protection.



For the professional user the entire surface is matt black with zero reflective surfaces making the product stealth for covert use.



NRG has designed and developed a unique hard wearing goggle strap for the professional user. This allows you to quickly remove your goggles without losing them. The goggle strap also includes our unique light stick holder which holds Illumiglow 3.8 cm sticks. This makes it simple for you to mark each other for quick and clear identification.

NRG adjustable head band system offers maximum comfort and protection and massively reduces helmet movement on the head. This has been designed



with the professional user in mind so that quick adjustments can be made when worn with a skull cap, bandana or balaclava.

SIZING

For the NRG Swift Water helmet we have produced a unique head lock fitting system to reduce the amount of movement when the helmet is being worn. The fitting system was designed with professional users in mind giving ample room for skull caps

Small - Medium = 51 - 56 cm
Medium - Large = 53 - 59 cm
Large - X Large = 55 - 61 cm

NRG SWIFT WATER BUMP HELMET SPECIFICATIONS

SHELL – Strong injection Mould (ABS)	LINER – Waterproof EVA Protective foam interior
INTERIOR – Full Interior surround cushioning	FIT SYSTEM – NRG Protect Headlock System
COLOUR – Matt Black (Non Reflective surfaces)	VENTS – 11 Mesh Ventilation and drainage vents.
CERTIFICATION – CE CE-EN 1385 / ISO 9001	WEIGHT – NRG Swift Water weighs 380 - 395g

RESCUE 42 TELECRIB® STABILISATION SYSTEM

TeleCrib® Struts are cost effective, extendable struts for use in vehicle, machinery, aircraft and light structural stabilisation. They provide fire and rescue personnel with several ways to stabilise loads prior to victim access and extrication. Because of their design, these struts are able to quickly and easily stabilise loads that would be difficult if not impossible to stabilise with wood cribbing.



Here are some of the fundamental advantages the Composite TeleCrib®s have over our competitors:

- Composite struts are lighter and stronger than steel struts, are electrically non-conductive, and are corrosion resistant.
- Require minimal maintenance for entire system, compared to air powered struts with many maintenance issues.
- Our kits are very safe and easy to use due to our interlock system and simple design.
- Strut Jacks fit ALL struts, work over the entire length of a strut and are removable, so you need just one per kit.
- Kits come complete with all accessories needed for a multitude of stabilisation scenarios and accessories can be stored in the included bag(s).
- Compared to most other strut brands, our stabilisation system costs less but has far more versatility.

TeleCrib®s work with all brands of hydraulic extrication tools.

TeleCrib® Composite Strut

Allowable Working Load Table

LENGTH	1 PIN	2 PINS
3' (91cm)	10,000 lb (4536 kg)	18,000 lb (8165 kg)
4' (122cm)	10,000 lb (4536 kg)	15,000 lb (6804 kg)
5' (152cm)	10,000 lb (4536 kg)	11,000 lb (4990 kg)
6' (183cm)	8,000 lb (3629 kg)	8,000 lb (3629 kg)
7' (213cm)	5,000 lb (2268 kg)	5,000 lb (2268 kg)
8' (244 cm)	4000 lb (1814 kg)	4,000 lb (1814 kg)

Length is in feet (centimetres)
Load is in pounds (kilograms)
Safety Factor 2:1 or greater
Never exceed the working load

THE SHARK™ collapsible step cribbing

New from Rescue 42, The Shark™ collapsible step cribbing will save critical storage space on your rig for more important equipment. Its innovative design is taller than most traditional step chocks, collapses to 14cm (5½ inches) and provides a solid platform for vehicle stabilisation.

The Shark's™ tough steel construction meets the 2:1 height to base ratio for vertical stability while positive grip teeth on the steps helps prevent slipping.



The Shark™ – Standard (SRK-S): Perfect for Engines/ Pumpers and smaller apparatus to stabilise lower clearance vehicles. Stands at 25cm (10 inches) high, collapses to 14cm (5½ inches) and weighs only 10.4kg (23 lbs).

The Shark™ – Large (SRK-L): Made for Trucks, Squads and Rescues to stabilise higher clearance vehicles such as SUVs and Trucks. Stands over 40.5cm (16 inches) high, collapses to 14cm (5½ inches) and weighs 16.7 kg (37 lbs).



PAC FIRE Break Apart Tools



- Fibreglass poles are a stronger material than wood and are splinter free.
- Non conductive from electrical shock.
- Will not absorb moisture, resists chemicals and can be easily cleaned.
- Ergonomically designed and easy to handle. Does not conduct heat/cold to the end user.
- Tools can be cut to any length required to fit your needs.
- Quick release push button locking system can be easily used with a gloved hand and is made locally in Queensland.
- Optional quik grip stowage mounts also available upon request.

McLASKi[™] Wildland Combination Tool

New from Rescue 42, The McLaski[™] is the ultimate combination tool for extreme wildland conditions. The McLaski[™] combines the best features of the McLeod and Super "P" Pulaski with lots of extras, making it the perfect I-Zone tool.

Perfect for:

- clearing and raking fire lines • grubbing and trenching
- chopping small brush • creating and maintaining trails
 - overhaul operations • safely lighting backfires

7 tools in one and weighs less than 2.75kg!



The lightweight head incorporates 7 tools for maximum efficiency in the field.

Fusee Holder



Spanner Wrench









FLAT FOLD AND CUP SHAPE RESPIRATORS

2 NEW STYLES AND 3 MODELS TO PROTECT YOUR HEALTH AND SAFETY

<p>Choose from 2 styles: Cup Shape or Flat Fold</p>	<p>CUP SHAPE</p> <ul style="list-style-type: none"> • Large cup shape design for comfort • Soft non latex strap minimise irritation • Adjustable nose bridge with internal EVA nose pad • Compact box of 10 	<p>FLAT FOLD</p> <ul style="list-style-type: none"> • Large flat fold design for low breathing resistance • Wide and soft non latex straps minimise irritation • Padded adjustable nose bridge • Convenient and portable in individual wrappers • Compact box of 10
---	--	---

SELECTION AS SIMPLE AS 1, 2, 3 – Good, Better, Best

<p>P2 – Good ASNZS1716 P2 Performance for mechanically and thermally generated particles</p>	<p>DM₁</p> 	<p>DM₁₀₀₀</p> 
<p>P2V – Better ASNZS1716 P2V Performance and exhalation valve for reduced breathing resistance and increased wear time.</p>	<p>DM₂</p> 	<p>DM₂₀₀₀</p> 
<p>P20V – Best ASNZS1716 P20V Performance and active charcoal layer for nuisance odours.</p>	<p>DM₃</p> 	<p>DM₃₀₀₀</p> 

FITTING INSTRUCTIONS



1. Hold the respirator in your hand with the nosepiece at your fingertips allowing the headbands to hang freely below your hand.



2. Position the bottom of the respirator under your chin and the nosepiece against the bridge of your nose.



3. Pull the bottom strap over your head and place it around the neck and below the ears. Pull the top strap over your face and position it high at the back of the head.



4. Use both hands to carefully mould the nosepiece to the shape of your face.



5. Perform a negative pressure fit check by completely covering the respirator with both hands and inhaling sharply. Mask should sink into face indicating an adequate seal.



6. If leaks are detected around the nose or edges adjust nose clip or straps as necessary to obtain an adequate fit. DO NOT enter the contaminated area if you cannot achieve a proper fit.

Competitor Class	Box Qty	3M	Moldex	Willson	Pro	Prosafe	MSA	Unisafe	Frontier	Drager
P1 CUP	20	8710		5185	PC301	RDP001	762611ML	RDP1000	6710	1310
P1V CUP	10	8812		5111	PC315(12)	RDP001V	762611MLV	RDP1000V	6712	1310
P2 CUP	20	8210	2200	5210	PC305	RDP002	762612ML	RDP2000	7710	1320
P2V CUP	10	8822	2300	5211	PC321(12)	RDP002V	762612MLV	RDP2000V	7712	1320
P1 FLAT FOLD	20	9310		4110	PC9111	RDFP1	227797	RDP1F	3710	
P1V FLAT FOLD	10	9312		4111		RDFP1V	227798(20)	RDP1VF	3712	
P2 FLAT FOLD	20	9320		4210		RDFP2	227813	RDP2F	3720	1720
P2V FLAT FOLD	10	9322		4211	PC2122(12)	RDFP2V	227814(20)	RDP2VF	3722	1720(20)
P10V CUP	10	9913V		5141						
P20V CUP	10	8247	2400	5251	PC531(12)	RDP002VC	763196MLV	RDP2000GV	6512	1320
P10V FLAT FOLD	10									
P20V FLAT FOLD	10							RDP2GVF		