

AS THE WOOD TURNS

March 2015 - Issue number 207 Minutes of the March 24th meeting.

Next "hands-on" is Saturday April 18th, from 10-12 noon at Hank's Dust Bowl. We invite beginning turners to a learning opportunity at the Hands On for one on one instruction. Spindle or bowl turning techniques will be covered. Please reserve your lathe with David Rice at dergas5@aol.com



MSSW woodturning display



Ken Whiting, Bob Monaghan, John Shooshan, and Jeff

Maple festival on March 7th drew over 350 people by the Norwell Science Center staff's reckoning. For the Maple Festival, the staff at the South Shore Science Center put taps in the maple trees located around the facility to let the sap collect in buckets for preparation for boiling down to make maple syrup. They also have a table selling maple syrup and other maple products. It's a big family draw as you might expect.

The festival ran from 11:00 until 4:00 and there were at least two people there the whole time turning tops. We were located in their basement where we have been before and the kids with their families just kept on coming ...and they all wanted tops! John and I had a few items for sale on a side table. He sold a pen and a bottle opener and I sold two small to medium size cherry burl bowls. It appeared that everyone was experiencing a high degree of cabin fever, not that I blame them.

MSSW Officers

President- Nigel Howe
(508) 828-8463 nbhturnings@yahoo.com
Vice president David Rice
(508)-668-3064 dergas5@aol.com
Treasurer Steve Wiseman
(508)-285-9394 stevwsmn@aol.com
Secretary Tim Rix
(617)-259-5618 rix.tim@gmail.com
Librarian Bob Monaghan
(781)-910-2191 lathefriend08@yahoo.com
Webmaster Eileen Walker
(781)-545-1978 eileenturnswood@gmail.com



Next Meeting - Thursday, April 28, 2015 - at Hank's dust bowl at 409 Washington St., Abington, MA at 7 pm

Refreshments – by David Rice

Member Challenge – work on the symposium project.

Demo - Steve Reznek will demonstrate turning a wooden tulip

Visitors- none

Mike Smith, at the Totally Turning Expo, said that because Joe Ruminski's wife is sick, there won't be a demonstration April 9th in Worcester at the Seventh Day Adventist church as was previously announced.

Also the Cape Cod Woodturners will present Cindy Drozda Saturday & Sunday April 18th & 19th at Wayne Shepard's shop, 1558 Race Lane, Marston Mills, Ma. Cost is \$35 Saturday (includes lunch), \$90 Sunday for hands on. The event is **sold out** for both days, but interested parties could get on a waiting list in case things should change. Contact Toby Lorenzen by email – lorenzen@bridgew.edu.

2015 Dues are Due and can be paid by going online and using PayPal, or just bringing the \$40 fee payment to the next meeting and seeing Tim Rix rix.tim@gmail.com

David Rice reported that raffle tickets for the drawing for the fee to cover the admission to the AAW Symposium in Pittsburgh in June are still available for \$10 each. It's \$325 if you win and you don't have to attend the symposium. Around 36 have been sold so far so the odds are still good.

Steve announced the club treasury has in excess of \$2500 on account.

Nigel said that he had been in touch with the Fuller Craft Museum regarding our exhibition with them and they proposed that the club sponsor a pamphlet for the show at a cost of \$900.

Andy Osborne asked what their overall marketing plan was. Nigel said he didn't know and that the last time we did a show with them that we didn't sell much. I suggested that we need to get more information. Bill Dooley suggested a payment of a third from the club, a third from Fuller and a third from one of their benefactors. Nigel said he would get more information from Fuller and get back to us.

Nigel next announced that he had a conversation with Cheryl White from the Arnold Arboretum in Jamaica Plain. She told him that they would like us to be part of their exhibition October 24th and 25th. We could demonstrate on the lathe if we want. Also involved would be the Central New England Woodturners and the Revolutionary Woodturners.

Andy suggested getting a piece of wood from their land and turning a bowl from it to give to them to exhibit. Nigel said he has a meeting with them April 4th.

Wally mentioned that the CNEW club had done this before 20 years ago when he was a member. He said we demonstrated in their courtyard and sold everything we brought. He said he brought a pole lathe to the event to demonstrate with that he still has.

Demo Day is Saturday April 11th at Hank's Dust Bowl. Scheduled demonstrators include:

Jim Leatherwood using the Lyle Jamison Hollowing System

Pablo Gazmuri on turning finials

Jim Silva on natural edge bowls

Steve Wiseman on chasing threads

Jeff Keller on making a threaded bolt & nut toothpick holder

Lenny Langevin on miniature turning

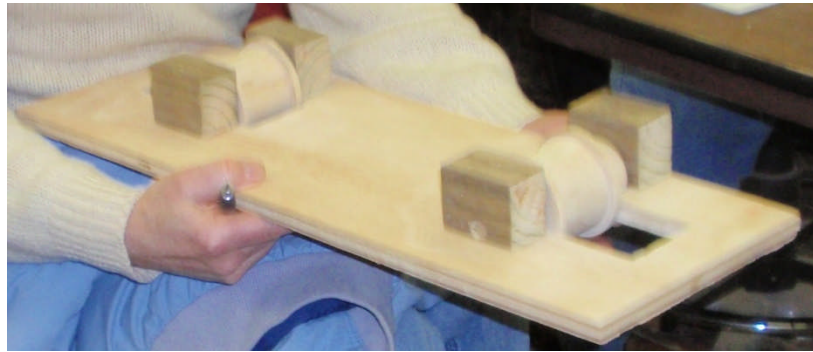
Cost is only \$30 per person and includes lunch. Money is to be used to update the club lathes. There will also be raffle items on display that attendees can win such as a vacuum pump, a wedge sled made by Ian and a 3/8 inch bowl gouge.

Nigel announced that Mike Walker added a “Slap Switch” to our demo lathe. It is an emergency switch and should be treated as such.

AAW Symposium project-

Andy said we are coming along slowly on our project. There is plenty of opportunity for additional turners to get involved. He has a list of items that need to be made.

On the right is the friction drive that will be used to facilitate moving the platform with the train through the tunnel.



Ken Whiting made this tree



Pictured are the engine, coal car and passenger car made by Jim Flannery for the AAW Symposium club challenge. Cars are made to HO train scale and still need a little more work.



More items made by Jim Flannery

Bring your items to the April meeting. The next group meeting for this is Tuesday night, March 31st. at Andy's house at 28 Phillips Avenue, Norwood.

Eileen announced that she would like to make a new slideshow for the club website of turned items by members. Send photos to Dropbox or to Eileen at eileenturnswood@gmail.com

Librarian report- Bob Monaghan spoke to Charlie Rosen who said that he could replace some missing DVDs next month.



David Mills Pease (1815-1890) settled in the Cascade Valley in Concord, Ohio prior to 1850 to establish his new business of turning woodenware after having tried other endeavors in the area. He found that an adjacent river by the name of Big Creek (which fed into Lake Erie) was more than adequate to provide the water power necessary to run the lathes and machinery in his factory each day.

Pictured are some of his turnings that survive to this day and were on exhibit and for sale at the Hingham Antiques Show March 21st. and 22nd. Included are turned goblets with captive rings, various lidded boxes and cups all from maple or maple and cherry wood. The covers to the boxes still fit as snugly as they did when new over a century ago. The detail is sharp and crisp. Keep in mind that this was all accomplished on a primitive lathe that ran on water supplied through a waterwheel.

Safety Suggestions – the club is still looking for your safety suggestions. Winner for this year will be chosen at our year end potluck and receive a gift certificate for \$30.00

Demonstration

Jim Leatherwood on Dying and waxing turnings



Jim began by telling us that if your turned object has a crack, it is best not to bother dyeing it as the crack will only be more noticeable than it already is. He applies his stains using paper towels. He uses more than one color many times and these are aniline dyes that are made by TransTint.

Here is his handout describing the process in detail:

As like most of you, I usually turn "green wood". This process presents its own set of unique problems such as; warping, cracking, and the most annoying to me is the drying time from six months to a year and more in some cases. So let's see if I got this right, you turn a bowl or whatever, using your imagination forming it, molding it, using your best cutting techniques leave it twice as thick as it needs to be, cover it in Anchor seal, wood chips, newspaper or nothing and set it on a shelf where it will warp, crack and split only to revisit and cut several months later. Does that sound like fun, not to me. So there are times when "We all need a little satisfaction" and that is what I call my dyed and waxed pieces, Satisfaction!

Several years ago at the New Hampshire Symposium at Pinkerton Academy I saw Andy DiPietro demonstrate this technique using a variety of dyes, waxes and spray lacquers to create some simple but elegant pieces. My gears started turning and I thought, Hummm I might just be able to make this work for me!" So here's what I found and use.

Choice of woods vary. I generally use ash for this, as it is readily available, open pored wood, light in color and takes dyes uniformly. Special effect waxes fills these open pores and gives a more dramatic effect to your dying and color blending. I have used a variety of different woods such as sugar maple, oak, hornbeam and walnut to mention but a few. I have found that a dying/wax finish can sometimes resemble an aged metallic patina on tight closed pore woods such as sugar maple and hornbeam.

So let's get started.

1.) I decide whether I'm making a bowl, box, vessel or whatever and that's the extent of my planning. I turn the piece to its finished wall and bottom thickness. I will generally sand the exterior before making my interior cuts. Most times the wood is too wet to sand and clogs the sand paper so my solution is to grab a handful of shavings off the floor, spin up the lathe speed and press the shavings to the turned piece to create some friction and heat. Now I'm not trying to dry the piece out completely but just enough to sand without clogging. I generally will sand up to 400 grit but remember, circular sand marks created while sanding the work piece spinning on the

lathe will be highlighted and accentuated by the dye. I always shut off the lathe and hand sand the last grit with the grain.

2.) After parting off and removing the work piece from the lathe the rest of the work is done at the workbench. I use Trans Tint dye and denatured alcohol and mix my own colors out of the basic primary colors red, yellow and blue or secondary colors purple, green and orange. I also vary the application process, from mixing one color and applying it to the work piece or laying down multiple colors using the work piece as a palette. Sometimes I sand back the previous color sometimes not, this is where your personal preferences and artsy freedom comes in, when you like the color you stop!



Some different vessels that have been dyed and waxed.

*** Special note; on the dying process, keep in mind your going to be using colored waxes over the dye specifically white and black. These colored waxes will lighten up your dye in the case of the white and darken up your dye in the case of the black waxes! *Trans Tint is available at: Rockler.com , Mohawkfinishing.com , Woodcraft.com*

2.) I generally allow the dye to dry 10 ~15 minutes depending on the saturation of the wood. I use Liberon Wax exclusively. White Liming Wax (white), Black Patinating Wax (black) and Black Bison Finishing Wax (finish). In some cases I will use a fine wire brush applied to the dyed piece with the grain to open up the pores, sometime not! Apply the white liming wax rubbing it in to fill the pores of the wood.

Sometimes, the liming or black effect is all you need or want at this point and you can allow it to dry 24 hours to await the final spray finish. Most times I wipe off the excess Liming/Black Patinating wax and then apply the Liberon Black Bison Finishing Wax, scrubbing it in and again wiping off the excess effects wax. The finishing wax removes more of the liming wax and some of the actual dye to give a more defined color and deeper luster. I use this same process with the Black Patinating Wax. Keep in mind as previously mentioned these waxes will lighten or darken the dyed surface and remove and blend some color.

Liberon Waxes are available at Packardwoodworks.com

3.) After a 24 hour drying period I spray the piece with Mohawk Perfect Blend Acrylic Lacquer. I generally use satin 35-40 sheen or gloss 80 sheen. I apply several LIGHT coats in the period of 10-15 minutes or so.

The pieces that I dye/wax that are vessels I fill with Danish oil (light colored), swish it around covering the entire inside of the vessel and pour out any excess and DONE! This is done after all dyes, waxes and finishing are dry and complete.

Mohawk Perfect Blend Acrylic Lacquer are available at Mohawkfinishing.com

Danish Oil Finishes are available at Home Depot or Lowes

Be safe and happy, have fun - Jim Leatherwood

Challenges for the month were to make a segmented ring or bowl and/or turn a twist ala Stuart Mortimer but people too busy.

Show and Tell



Pictured are four turnings of Ron Reynolds. The first is a small bowl turned from Apple. Next Ron holds a shallow bowl turned from Tiger Maple. His third turning is more Tiger Maple which he dyed yellow to enhance the wood grain. The last picture shows an egg cup with an egg he turned. Ron's wife, Bobbi, painted the egg.



Len Langevin holds his miniature lowboy made in Walnut. He said it took 40 hours just to make the four legs. He made the brass hardware with separate backing plate, pins and bale for each handle. Yes, the drawers open as pictured. He carved the fan detail on the lower drawer and turned the small Brass knob there as well. Amazing attention to and execution of detail Len !



Charlie McCarthy showed us two items turned from a scrub tree next to his garage. On the left we see a goblet turned with captive rings. Not sure about the wood (ash?). There is bug damage on the stem and also some spalting of the wood. On the right we see a pestle turned from the same tree.



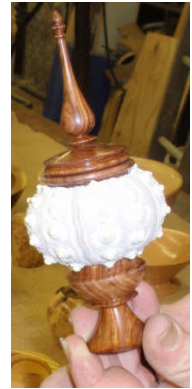
Pictured are two turnings from Carl Albro. In the middle of the picture is a triangular shaped bowl with a block of the wood that was a companion piece before turning. On the right is a variation of the same three sided turning principle. Interesting items.



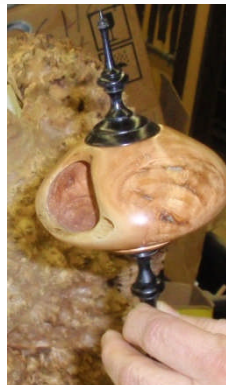
Pictured are three recent turnings by Peter Soltz. Lower left is Ash as is the smaller bowl above it. On the right is a piece of Redwood burl that Peter acquired from Sidney. Turned wet, it was finished wet as well and will have to be refinished later on when it dries out.



Ben holds a small Maple burl bowl. Nice piece.



Ian showed us an interesting variation on shell ornaments. Pictured is a shell box with a finial turned from Cocobolo.



Pablo is holding a Mulberry bowl finished with Walnut oil in the first picture. Next he has two pedestal boxes with ebonized finials. The second one has been dyed. Both were finished with lacquer.

The three items pictured were turned by Paul O'Neil. The larger bowl at the top in the picture is turned from Beech. Next to it is a smaller footed Cherry bowl. Both were finished with wipe on poly and buffed using the Beal System. Last is a box turned from Maple burl.



Steve holds a small Pear bowl in the first picture and a second one of Maple dyed green. He finished them with lacquer and buffed them using the Beal System

Pictured are three pens from Dan Manley. The uppermost is of Yellowheart and Purpleheart. Below is a bolt action model made from two kits in Cocobolo. Both are finished in CA glue. The lower pen is a Slimline from Cedar.



You are looking at a large red maple burl that Wally got from Bill Dooley. Wally hollowed out the inside and bleached the outside. The base is supported by a cushion filled with dried corn kernels.



Even larger is this burl from Bill. He hollowed it out as an art form and mounted it on some golf tees for support. It was most recently on display at the Fuller Craft Museum.



Bill is holding a Norfolk Island Pine turning with a matching knob lid with some rather extensive spalting. Interesting shape.



Nigel holds two of possibly the smallest bowls he has ever turned from Black Locust.



Jeff's box is a bleached Norfolk Island Pine. The top has a stone Agate below a knob turned from Bloodwood. The finish is wipe on poly and buffing by the Beal System.

Upcoming Events

Peabody Essex Museum – On view February 21, 2015 to June 21, 2015 “**Audacious: The Fine Art of Wood from the Montalto Bohlen Collection**”

Demo Day is scheduled for April 11th. It will be the same format as the last two with three members demonstrating in the morning and three more demonstrating in the afternoon. The event is a club fundraiser to replace our ageing mini-lathes. It is \$30.00 for the day with lunch included.

Earth Day - Sunday, May 3rd. 11 – 4 pm at the South Shore Natural Science Center, Norwell. We will turn tops and have items for sale. Questions? Call Jeff at 781-878-4540 or 781-878-7310.

Guild of New Hampshire Woodworkers is holding its 8th Woodturning Symposium on May 9th, 2015 at the Pinkerton Academy in Derry, New Hampshire. <http://www.gnhw.org/> has some initial information about the upcoming Symposium. Janet Collins is one of the demonstrators

South Shore Craft Festival Father's Day weekend in Cohasset June 19th through the 21st.

AAW 2015 Symposium is scheduled for June 25-28 in Pittsburgh, PA

James Library, Norwell Center - the show was rescheduled to September with the reception planned for

Friday September 4, 2015. The show will run throughout the month of September 2015. Questions? Call Jeff at 781-878-4540 or 781-878-7310 or the James Library at 781-659-7100.

Farm Day at the Daniel Webster estate is Saturday, October 17, 2015 (with a rain date of Saturday, October 24th)

Friends of Abington Seniors Craft Show Saturday, October 31st. - the Senior Center located at 441 Summer Street, Abington where we will sell items and turn tops for kids.

AAW National Segmented symposium for 2016 will be held in Quincy. Date unknown at this time

Items For sale at the Club store : – contact stevwsmn@aol.com Steve Wiseman

CA GLUE; THIN, MEDIUM and THICK All are the SAME PRICE

2 Ounce \$4.00, 2 Ounce rubberized \$5.00, 8 Ounce \$12.00, 16 Ounce \$21.00

2 Ounce Accelerator Spray Bottle \$3.00, 8 Ounce Accelerator Refill \$5.00, 2 Ounce Debonder \$3.00

\$.50, Long nozzles –package \$.75, 2 Ounce empty bottles \$.75, 2 Ounce replacement caps

Epoxy 4 Ounce \$5.00 **ANCHORSEAL** - 2 Liter \$15.00, 1 Liter \$8.00, ½ Liter \$4.00 **HATS** - \$15.00

SANDING DISCS; 80 THROUGH 320 GRIT - 2" \$2.50, 3" \$3.50

1" Disc Holder \$7.50, 2" Disc Holder \$8.50, 3" Disc Holder \$10.00

2" Blue Disc Holder \$12.00, 3" Blue Disc Holder \$14.00

½" Soft Pad Extension \$2.50, Hand Held Disc Holder \$11.00

Bottle Stoppers \$3.00, Bottle Stopper Chuck \$5.00

Tee Shirts \$16.00 \$2.00 More for 2X and larger Polo Shirts \$27.00 \$2.00 More for 2X and larger

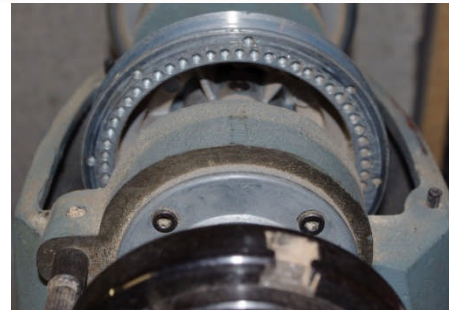


Assorted tool handle
and pen blanks



Delta lathe model No. 46-541P for sale purchased new in 1994. It is a variable speed gap bed lathe with an indexing head. Comes with Nova chuck, drill chuck and other tooling. Capable of outboard turning and with a stand for a steady rest for outboard turning that can go with it.

Price: \$1200. Phone 508-669-5245. e-mail: glenn@woodjoytools.com



Note – the Cindy Drozda event is Sold Out but they have set up a waiting list
Saturday/Sunday April 18-19, 2015 9:00AM-4:00PM
The Cape Cod Woodturners Present :Cindy Drozda



Cindy has been a full-time woodturner since 1998 and is nationally recognized for her skill and artistry. Her work has been chosen for exhibitions around the country and she has demonstrated her woodturning at local clubs and national symposiums. On Saturday, she will demonstrate an Ikebana vase, a multi-axis hollow form, and her signature finial box. On Sunday, 6 turners will have the opportunity to work with Cindy, one-on-one, making one of the project pieces featured at the Saturday demonstration.



Visit Cindy's website for more information www.cindydrozda.com
Where: Wayne Shepard's Shop, 1558 Race Lane, Marston Mills, MA

Cost: \$35 includes lunch for Saturday 4/18 with limit of 35 turners
\$90 includes lunch for Sunday 4/19 with limit of 5 intermediate level
turners for hands on demonstration. First paid reserves a spot.

Make checks payable to Cape Cod Woodturners

Contact: Toby Lorenzen, 51 Althea Drive, N. Falmouth, MA 02556
E-mail: Lorenzen@bridgew.edu Subject: Cindy Drozda on the email

Lunch will be provided by Clarke Buchanan of Sam Diego's Restaurants. Please indicate choice of Beef or Chicken Wrap, or Salad with or without chicken. Please note any allergies when selecting meal.