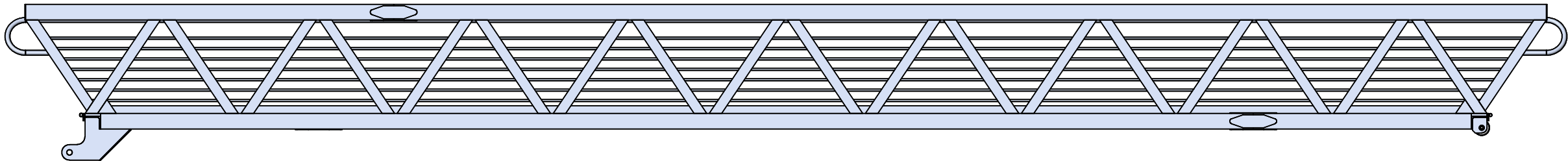
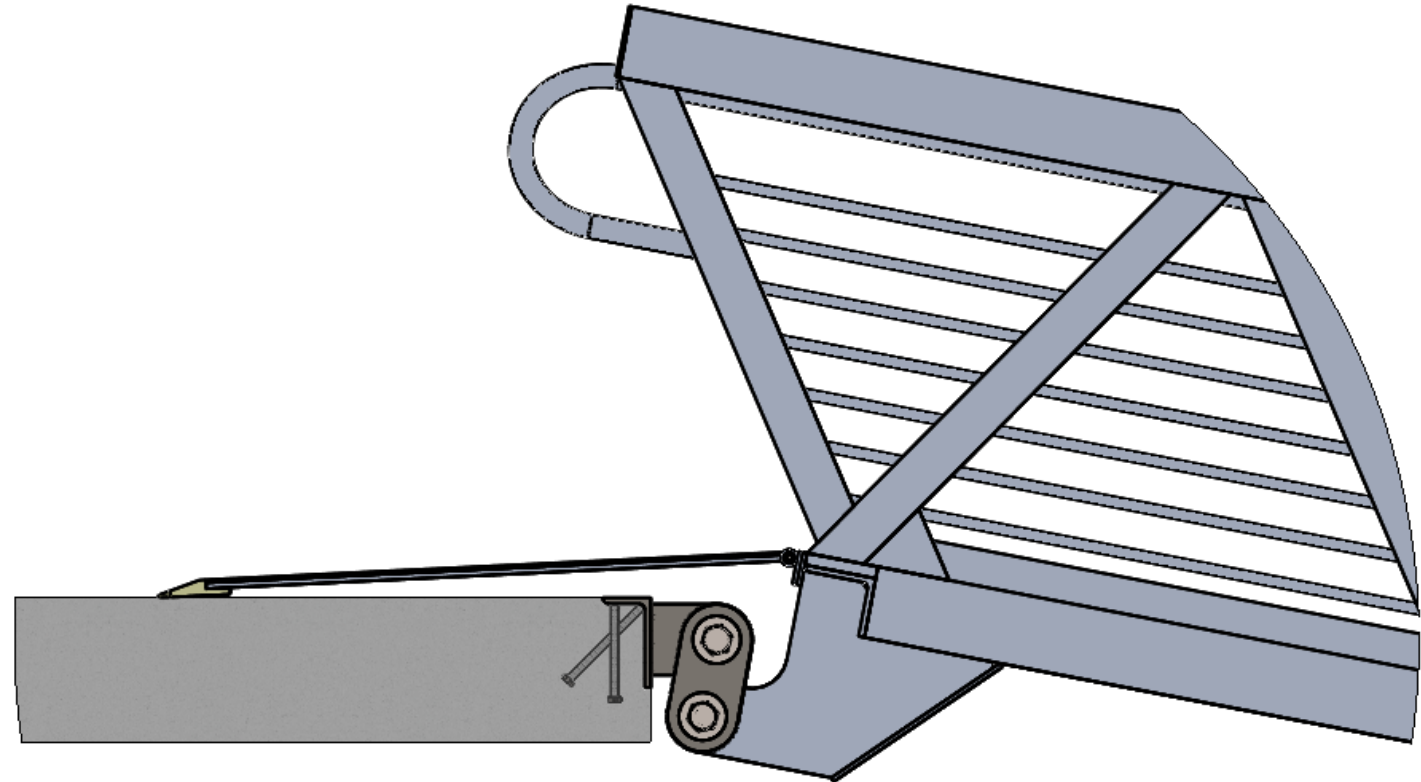
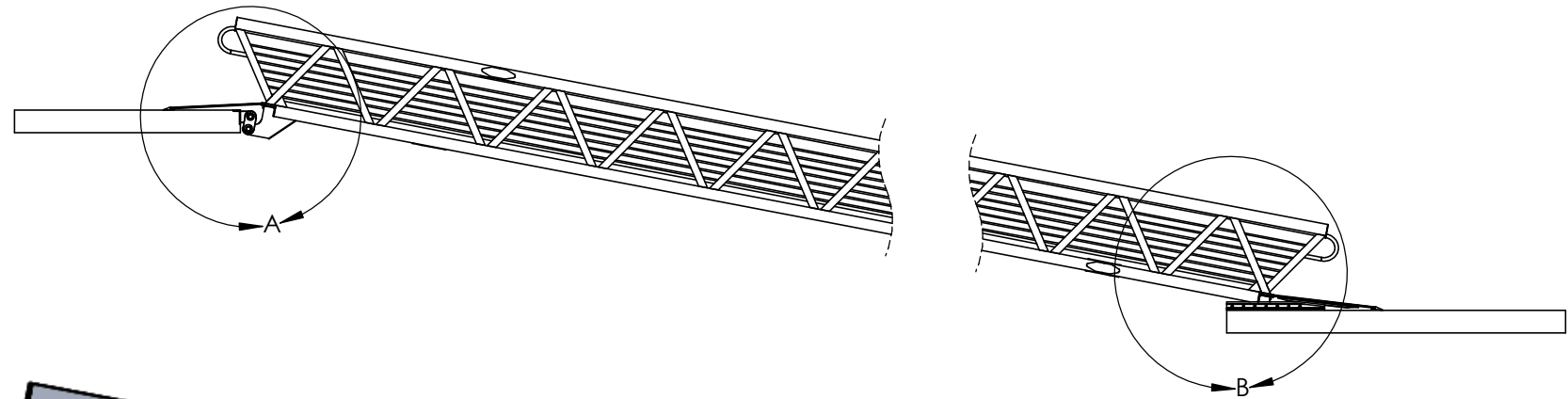


MARINA GANGWAY - EXAMPLE ONLY

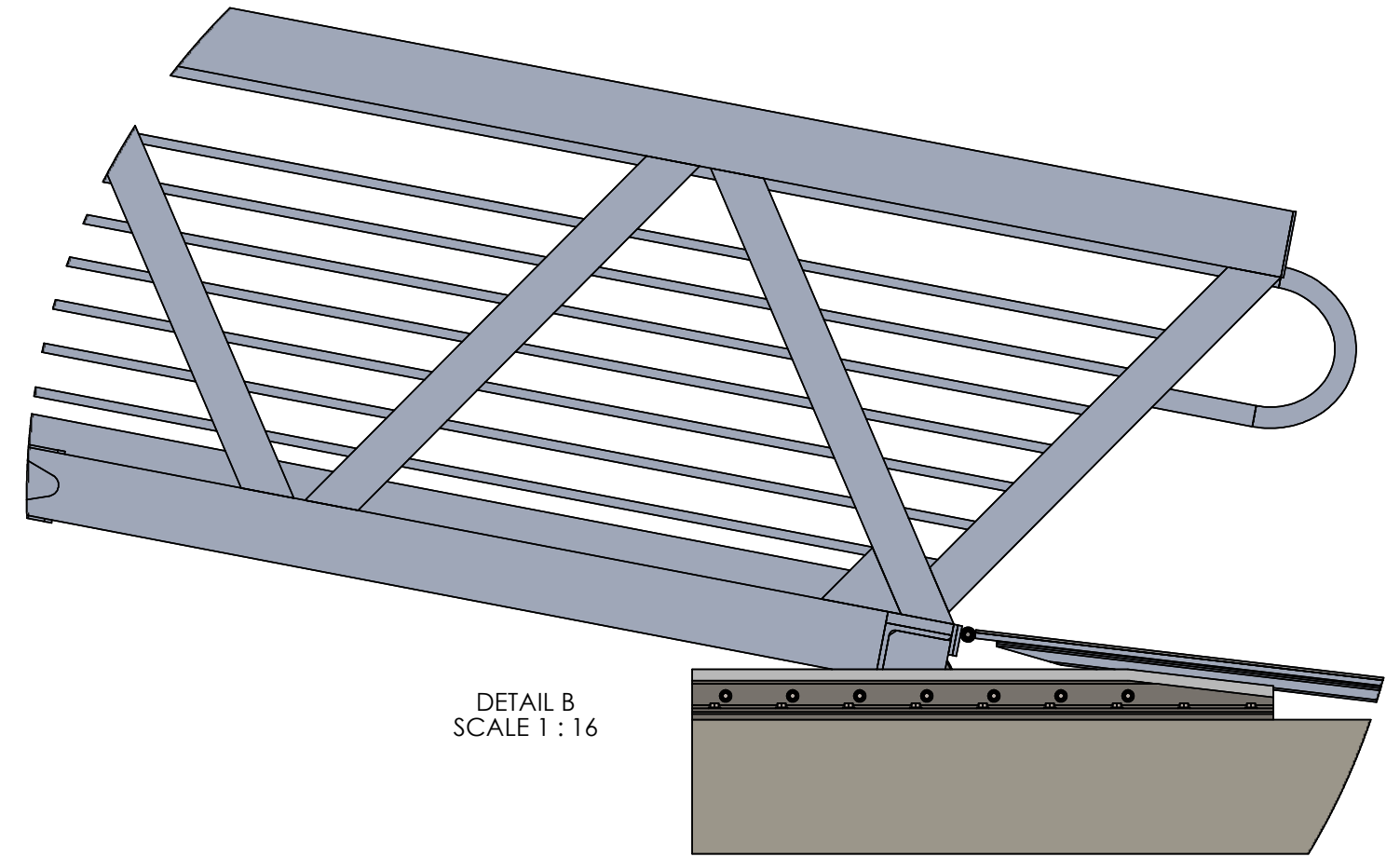
5x45 Ft, WELDED ALUMINUM
2018



8 7 6 5 4 3 2 1



DETAIL A
SCALE 1 : 16



DETAIL B
SCALE 1 : 16

D
C
B
A

D
C
B
A

PROPRIETARY AND CONFIDENTIAL
THE INFORMATION CONTAINED IN THIS DRAWING IS THE PROPERTY OF
ERIC SCOTT ANY REPRODUCTION IN PART OR AS A WHOLE
WITHOUT THE WRITTEN PERMISSION OF ERIC SCOTT IS PROHIBITED.

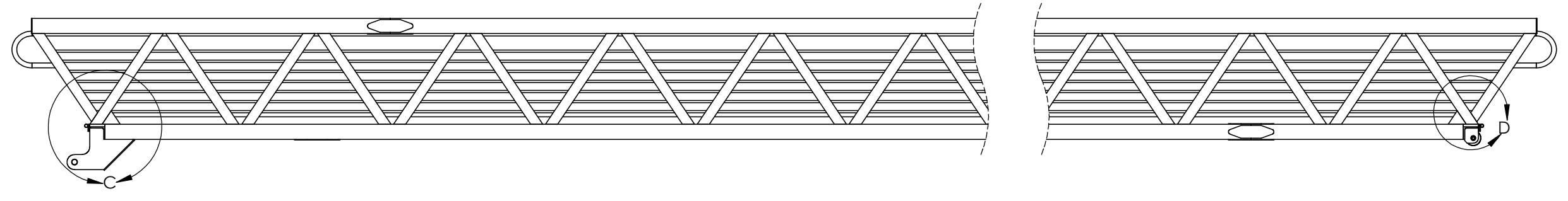
	NAME	DATE	UNLESS OTHERWISE SPECIFIED: SCALE 1:96	GANGWAY ASSEMBLY - INSTALLED	
ENGINEER	Eric Scott		UNITS Inch, lbs		
DRAWN	Eric Scott	2/24/2018	MATERIAL --	DESCRIPTION: Gangway installation	
CO.	CO		FINISH As Welded		
CHECKED				PROJECT	--
COMMENTS:				CLIENT:	--
--				COMPANY: Name	--
					SIZE B
					REV 1
					DWG. NO. 2017_02_GWY100
					FILE NO. Xmpl_GWY5x45_r1_mods_r1b
					SHEET 2 OF 11

8 7 6 5 4 3 2 1

8 7 6 5 4 3 2 1

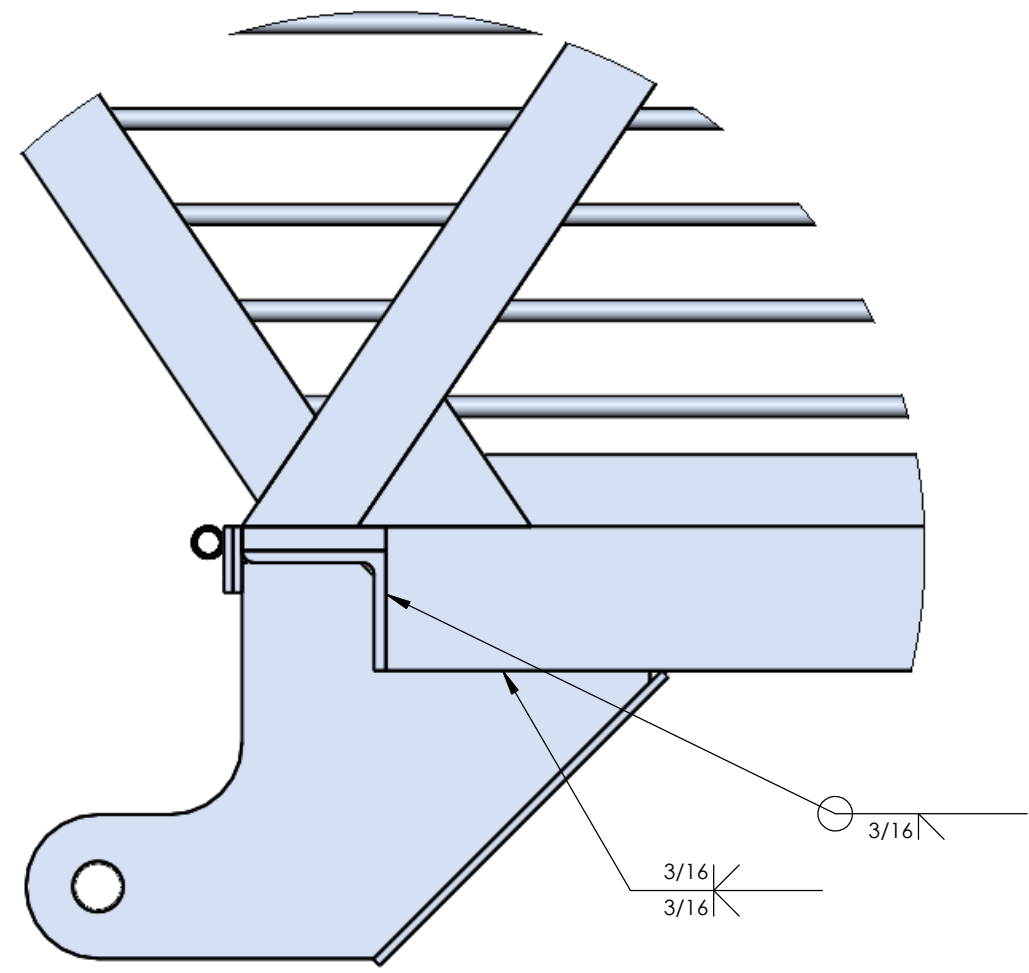
D

D

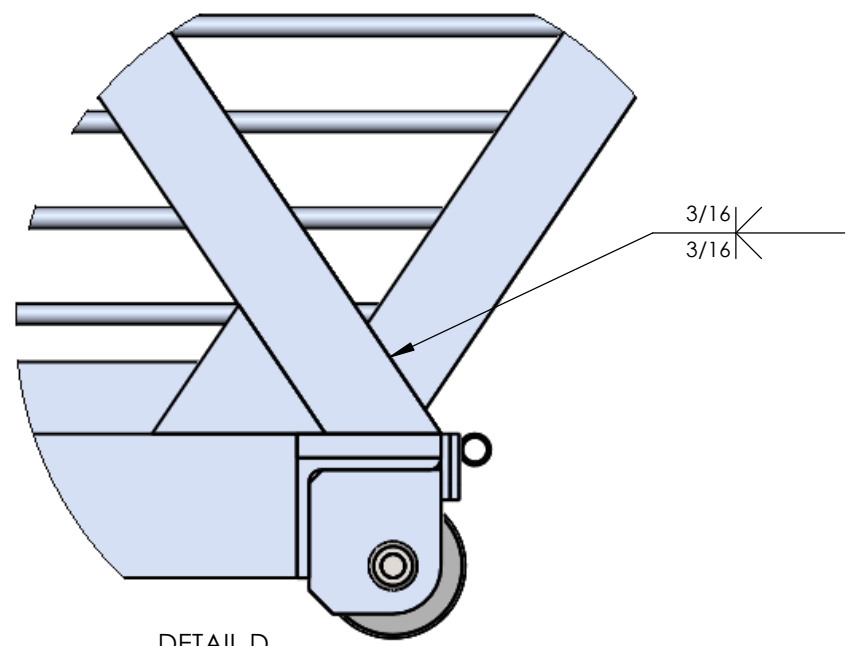


C

C



DETAIL C
SCALE 1 : 8



DETAIL D
SCALE 1 : 8

B

B

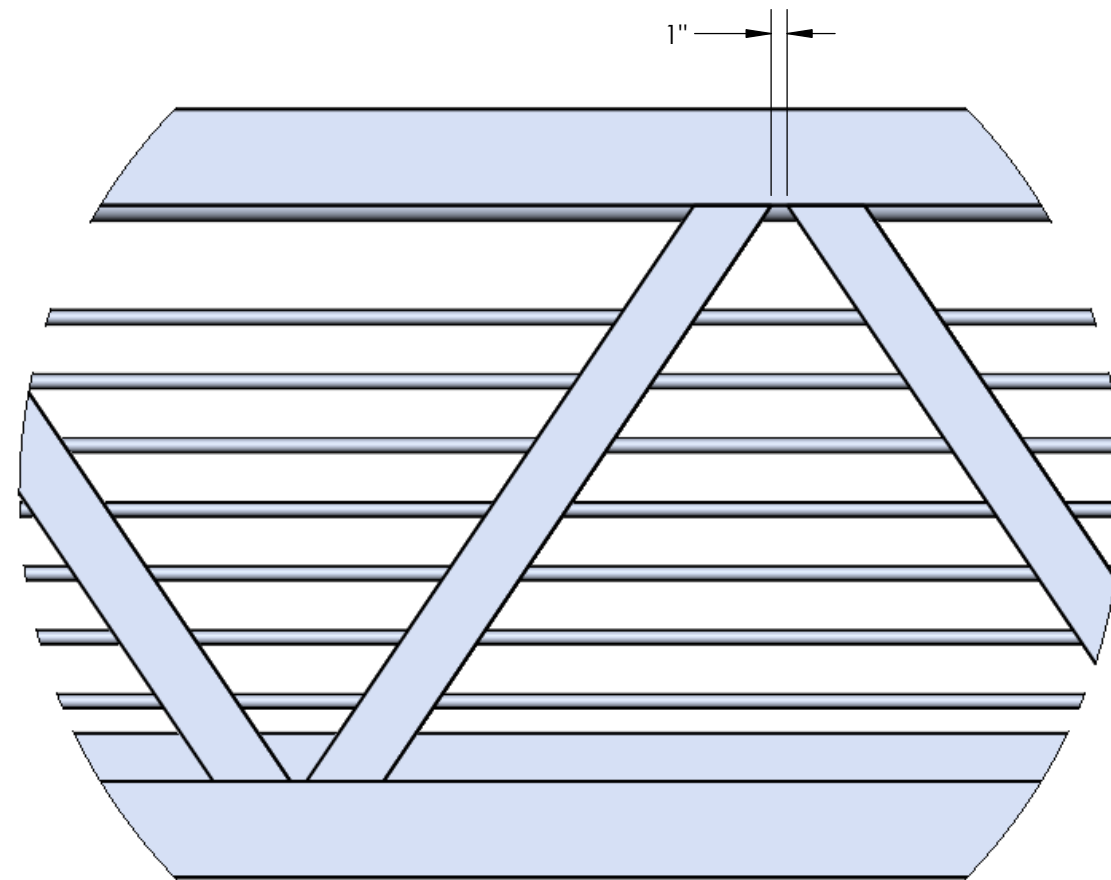
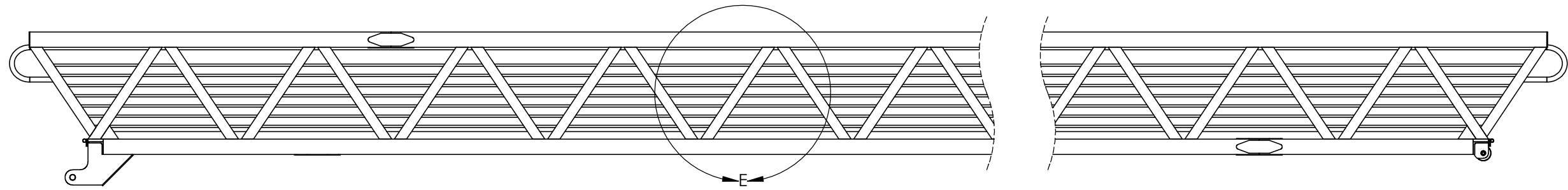
A

A

PROPRIETARY AND CONFIDENTIAL
THE INFORMATION CONTAINED IN THIS DRAWING IS THE PROPERTY OF
ERIC SCOTT ANY REPRODUCTION IN PART OR AS A WHOLE
WITHOUT THE WRITTEN PERMISSION OF ERIC SCOTT IS PROHIBITED.

	NAME	DATE	UNLESS OTHERWISE SPECIFIED: SCALE 1:48	GANGWAY ASSEMBLY - TYPICAL	
ENGINEER	Eric Scott		UNITS inch, lbs		
DRAWN	Eric Scott	2/24/2018	MATERIAL --	DESCRIPTION: Gangway assembly, profile detail Weld	
CO.	CO		FINISH As Welded		
CHECKED				PROJECT --	SIZE B
COMMENTS:				CLIENT: --	REV 1
				COMPANY: Name	DWG. NO. 2017_02_GWY100
				--	FILE NO. xmpl_GWY5x45_r1_mods
				--	SHEET 3 OF 11

8 7 6 5 4 3 2 1



DETAIL E
SCALE 1 : 12

GAP

PROPRIETARY AND CONFIDENTIAL
THE INFORMATION CONTAINED IN THIS DRAWING IS THE PROPERTY OF
ERIC SCOTT ANY REPRODUCTION IN PART OR AS A WHOLE
WITHOUT THE WRITTEN PERMISSION OF ERIC SCOTT IS PROHIBITED.

		NAME	DATE	UNLESS OTHERWISE SPECIFIED:		GANGWAY ASSEMBLY - TYPICAL	
ENGINEER	Eric Scott			SCALE	1:48		
DRAWN	Eric Scott	2/24/2018		UNITS	inch, lbs	PROJECT -- CLIENT --	
CO.	CO			MATERIAL	--		
CHECKED				FINISH	As Welded	DWG. NO. 2017_02_GWY100 FILE NO. Xmpl_GWY5x45_r1_mods SHEET 4 OF 11	
COMMENTS:	--						

8 7 6 5 4 3 2 1

D

D

C

C

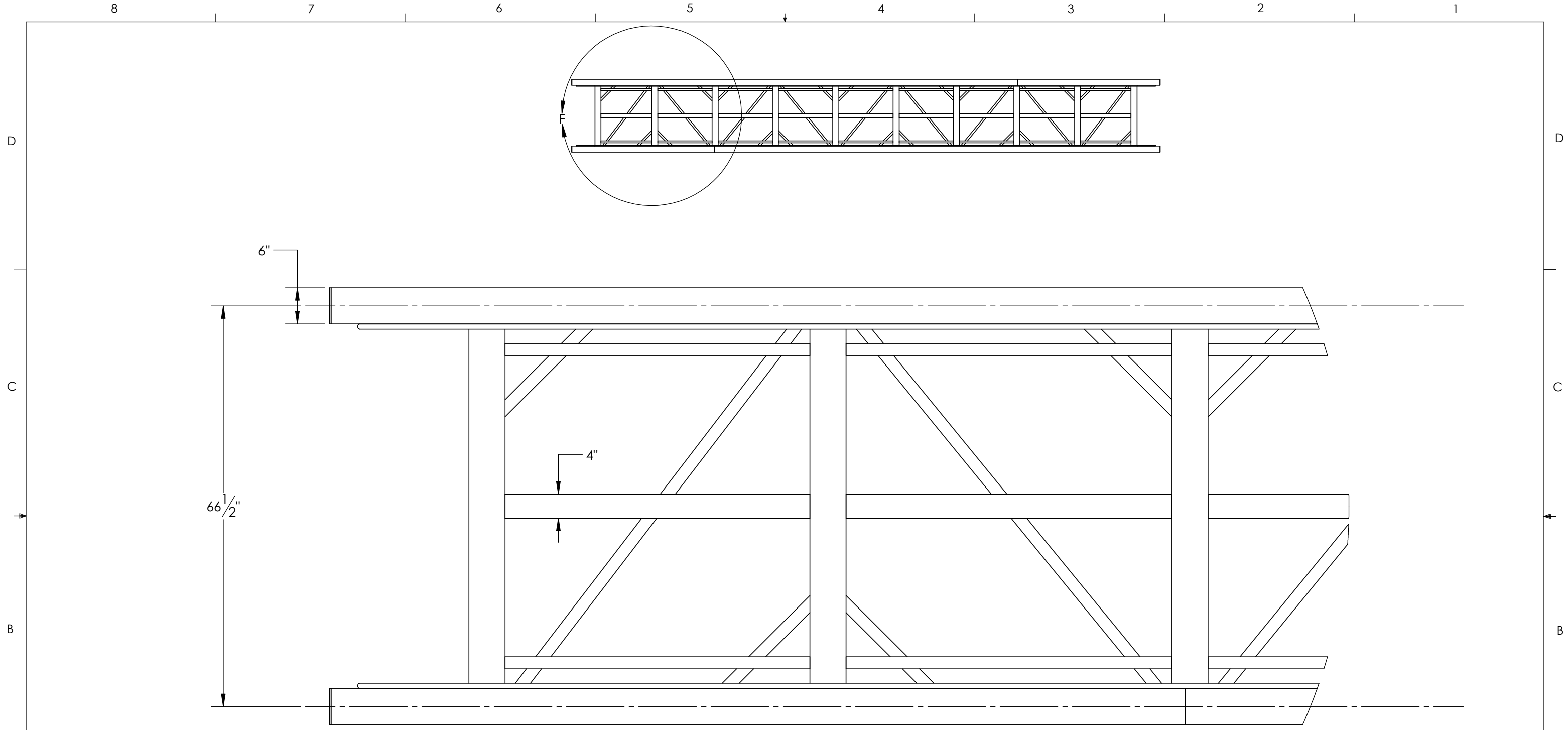
B

B

A

A

8 7 6 5 4 3 2 1



DETAIL F
SCALE 1 : 16

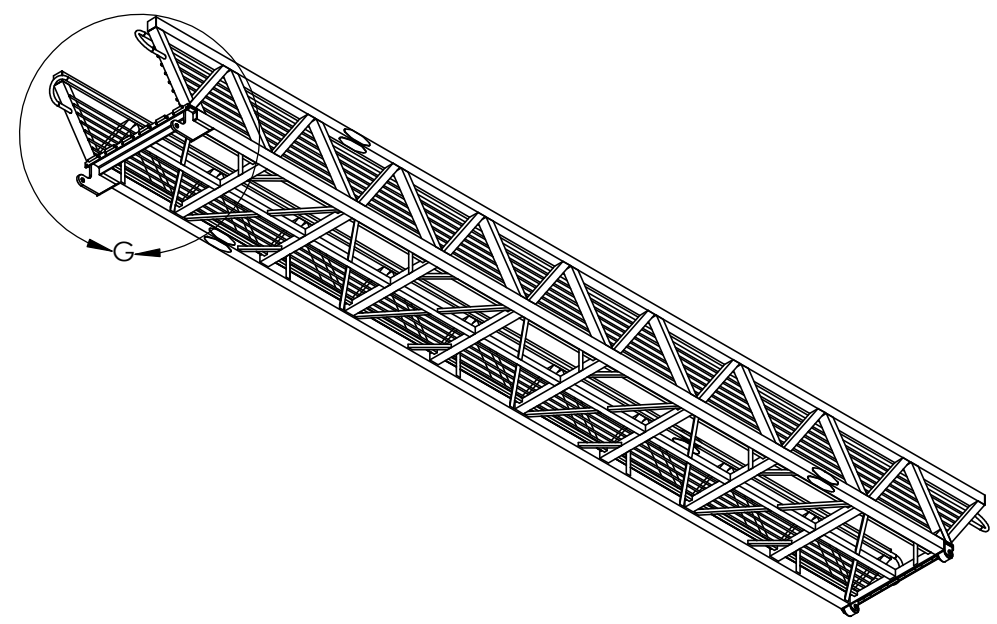
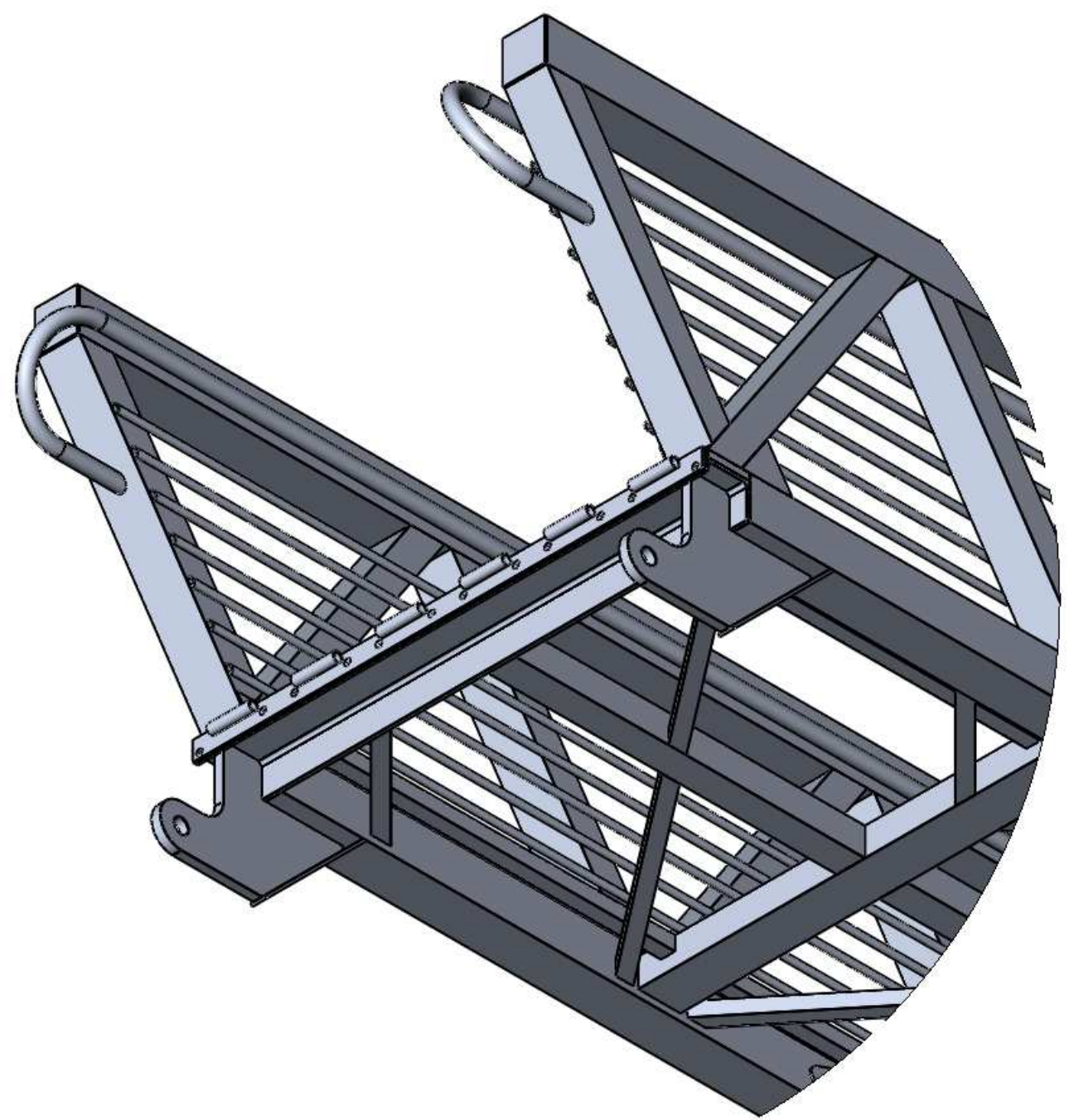
PROPRIETARY AND CONFIDENTIAL
THE INFORMATION CONTAINED IN THIS DRAWING IS THE PROPERTY OF
ERIC SCOTT ANY REPRODUCTION IN PART OR AS A WHOLE
WITHOUT THE WRITTEN PERMISSION OF ERIC SCOTT IS PROHIBITED.

		NAME	DATE	UNLESS OTHERWISE SPECIFIED:		GANGWAY ASSEMBLY - TYPICAL	
ENGINEER	Eric Scott			SCALE	1:48	DESCRIPTION: Transverse structure, weld	
DRAWN	Eric Scott	2/24/2018	UNITS	Inches			
CO.	CO		MATERIAL	--			
CHECKED				FINISH	AS WELDED	PROJECT --	
COMMENTS:						CLIENT: --	
Hidden: Floor grate						SIZE B	
				COMPANY: Name		REV	
				--		1	
				--		DWG. NO. 2017_02_GWY100	
						FILE NO. Xmpl_GWY5x45_r1_mods_r1b	
						SHEET 5 OF 11	

8 7 6 5 4 3 2 1

D
C
B
A

D
C
B
A



DETAIL G
SCALE 1 : 16

PROPRIETARY AND CONFIDENTIAL
THE INFORMATION CONTAINED IN THIS DRAWING IS THE PROPERTY OF
ERIC SCOTT ANY REPRODUCTION IN PART OR AS A WHOLE
WITHOUT THE WRITTEN PERMISSION OF ERIC SCOTT IS PROHIBITED.

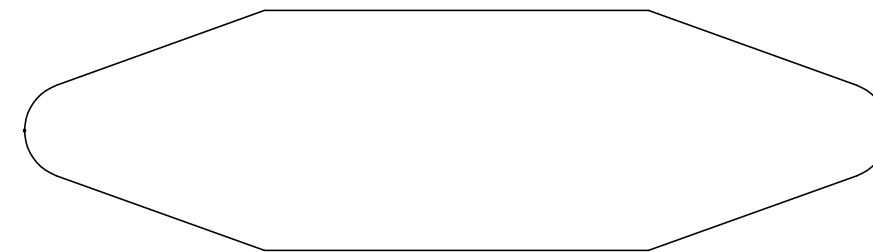
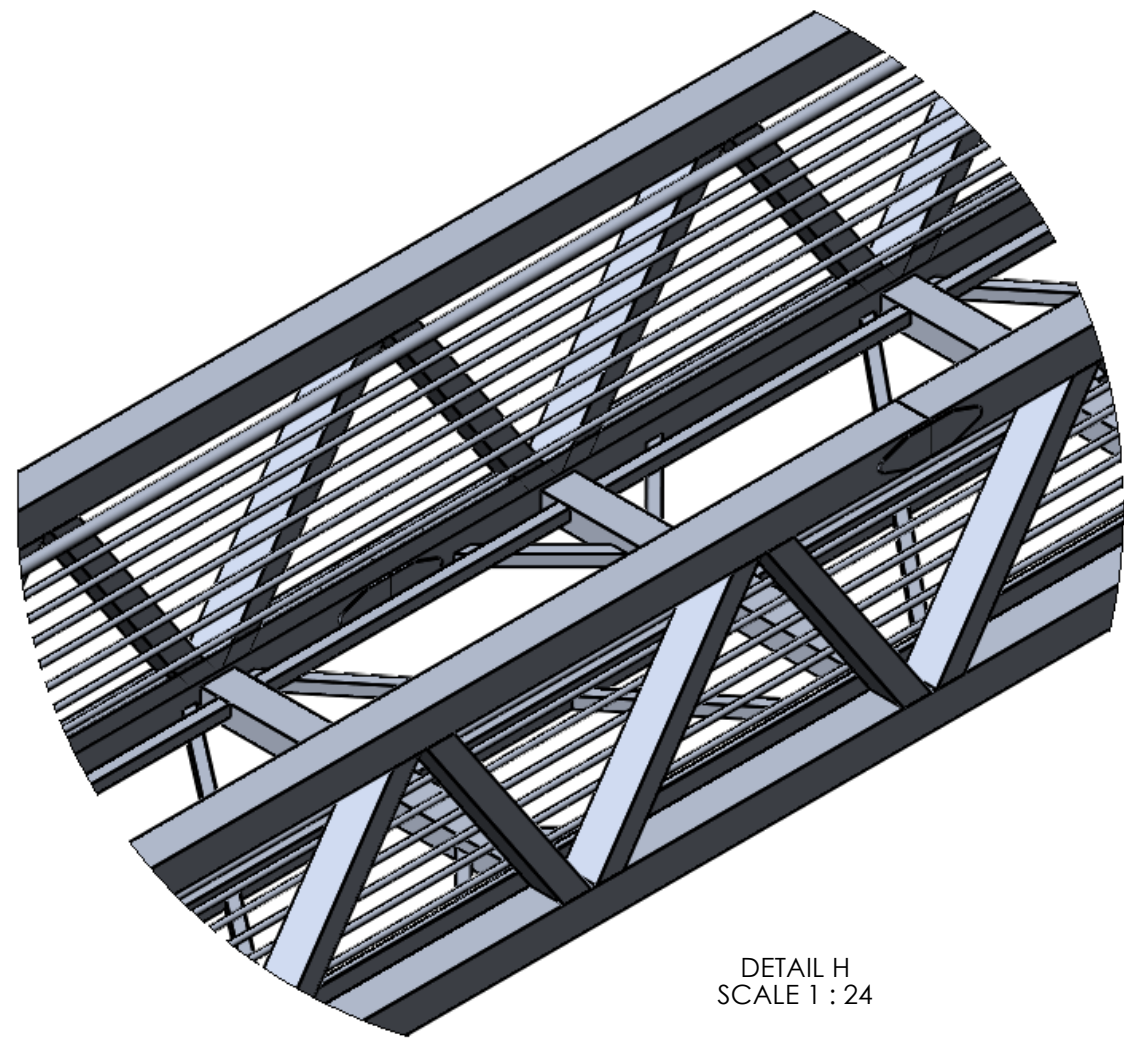
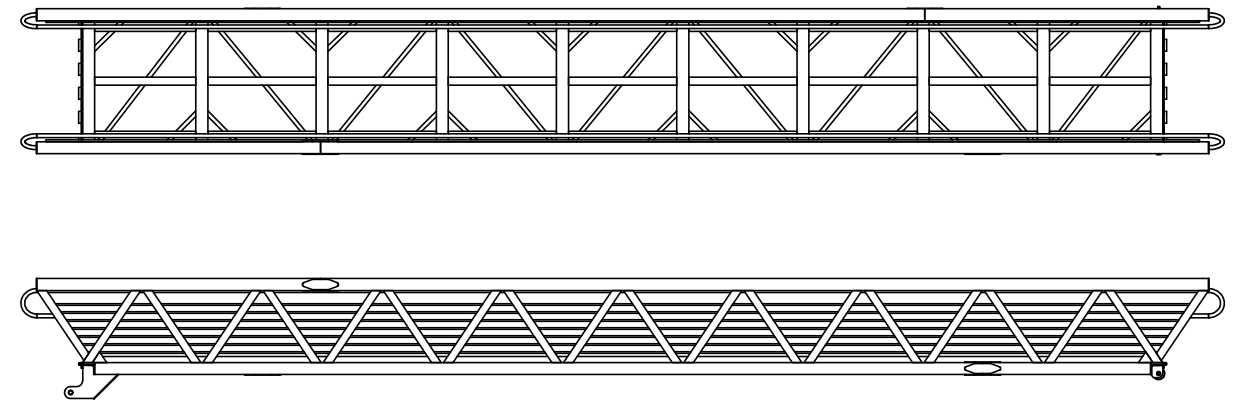
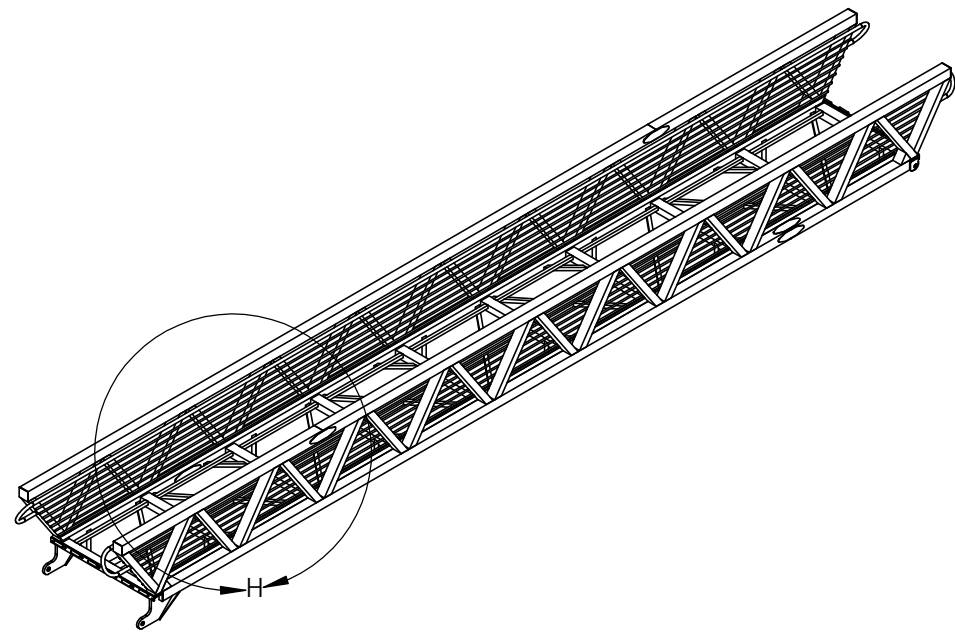
	NAME	DATE	UNLESS OTHERWISE SPECIFIED: SCALE 1:48	GANGWAY ASSEMBLY - TYPICAL					
ENGINEER	Eric Scott		UNITS inch, lbs						
DRAWN	Eric Scott	2/24/2018	MATERIAL --	DESCRIPTION: Front view, transverse underneath Weld					
CO.	CO		FINISH As Welded						
CHECKED				PROJECT	--	SIZE	B		
COMMENTS:	Hidden: Floor grate			CLIENT:	--	REV	1		
				COMPANY: Name		DWG. NO.	2017_02_GWY100		
						FILE NO.	Xmpl_GWY5x45_r1_mods_r1b		
				SHEET 6 OF 11					

8 7 6 5 4 3 2 1

8 7 6 5 4 3 2 1

D
C
B
A

D
C
B
A



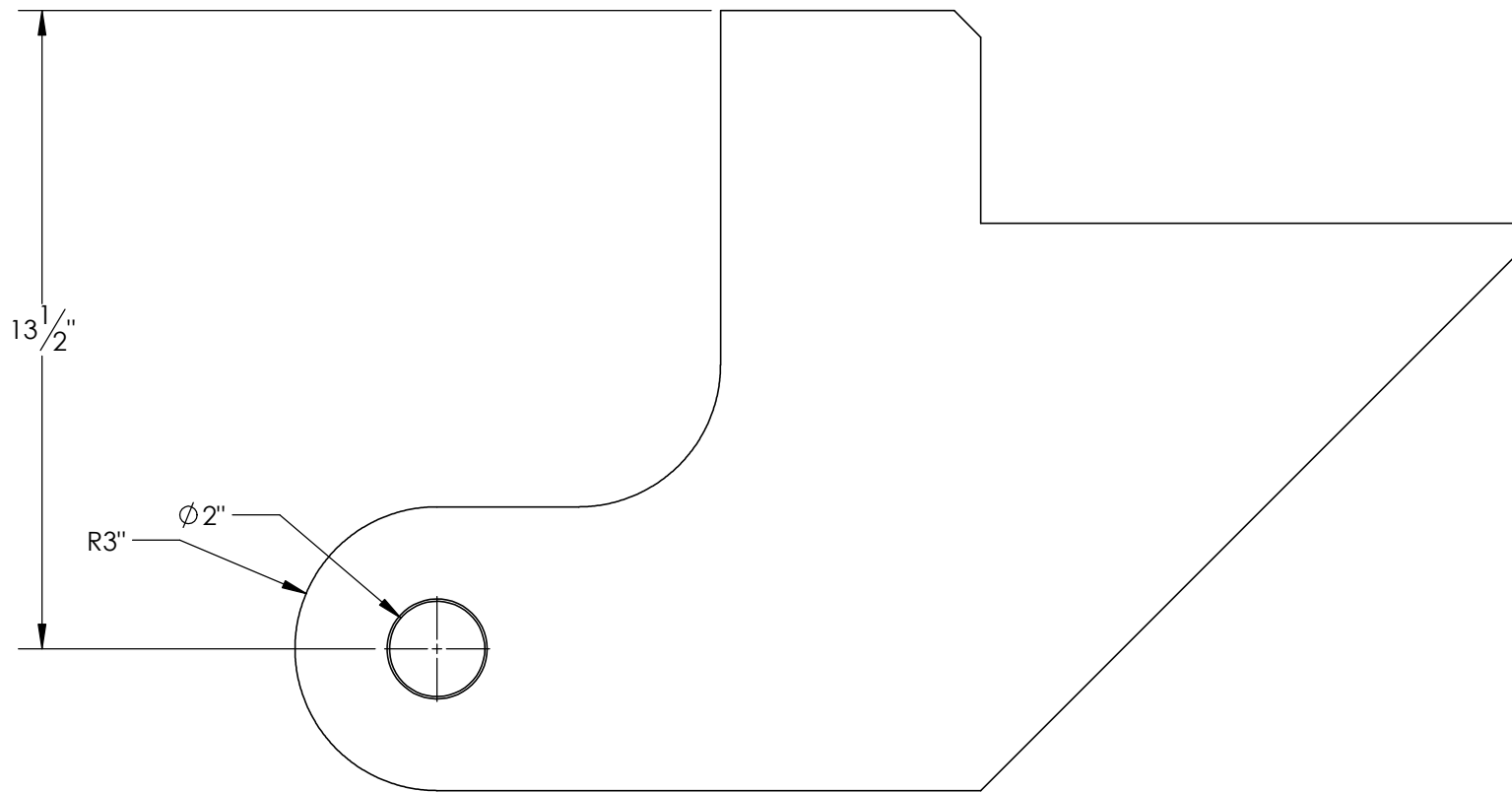
SPLICE PLATE

DETAIL H
SCALE 1 : 24

PROPRIETARY AND CONFIDENTIAL
THE INFORMATION CONTAINED IN THIS DRAWING IS THE PROPERTY OF
ERIC SCOTT ANY REPRODUCTION IN PART OR AS A WHOLE
WITHOUT THE WRITTEN PERMISSION OF ERIC SCOTT IS PROHIBITED.

		NAME	DATE	UNLESS OTHERWISE SPECIFIED:		GANGWAY - 5x45 CHORD SPLICE	
ENGINEER	Eric Scott			SCALE	1:48		
DRAWN	Eric Scott	2/24/2018		UNITS	inch, lbs	PROJECT -- CLIENT --	
CO.	CO			MATERIAL	--		
CHECKED				FINISH	As Welded	REV 1	
COMMENTS:	Hidden: Floor grate			COMPANY: Name			
					--	FILE NO. Xmpl_GWY5x45_r1_mods_r1b	
					--	SHEET 7 OF 11	

8 7 6 5 4 3 2 1



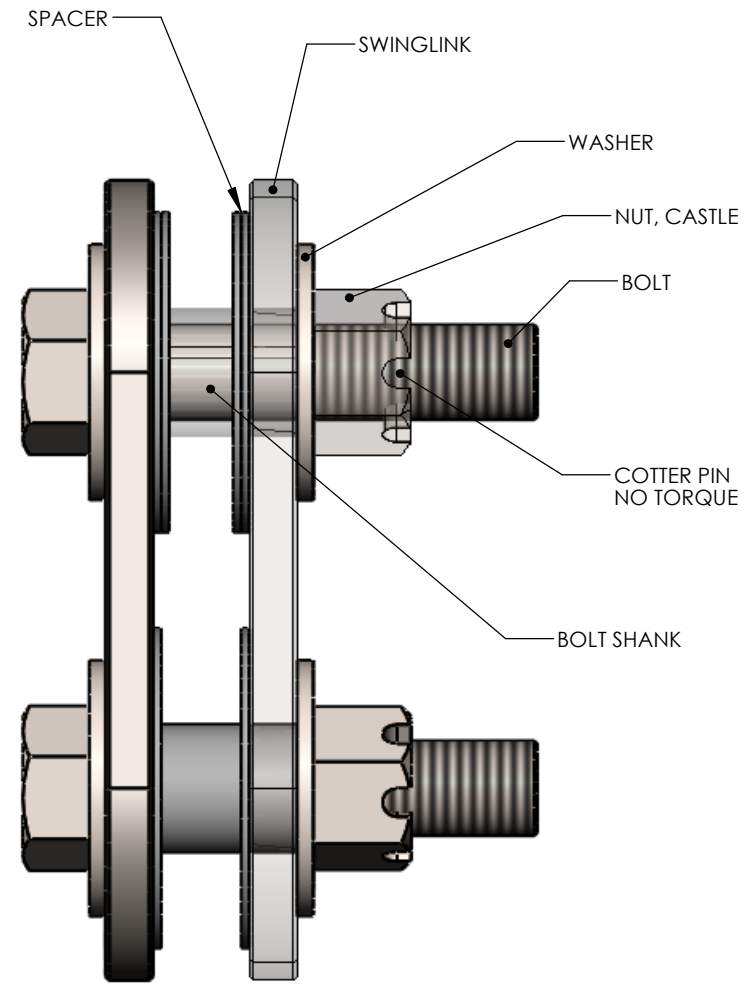
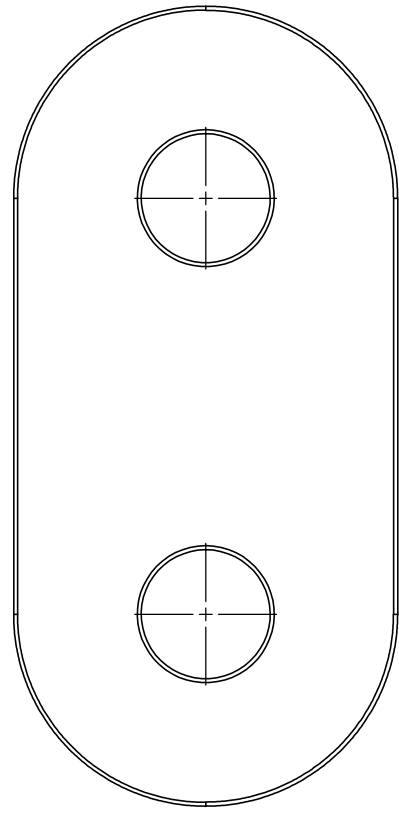
SWING LUG

PROPRIETARY AND CONFIDENTIAL
 THE INFORMATION CONTAINED IN THIS DRAWING IS THE PROPERTY OF
 ERIC SCOTT ANY REPRODUCTION IN PART OR AS A WHOLE
 WITHOUT THE WRITTEN PERMISSION OF ERIC SCOTT IS PROHIBITED.

	NAME	DATE	UNLESS OTHERWISE SPECIFIED: SCALE 1:6	SWING LUG	
ENGINEER	Eric Scott		UNITS inch, lbs		
DRAWN	Eric Scott	2/24/2018	MATERIAL --	DESCRIPTION: SwingLink Lug - Gangway	
CO.	CO		FINISH MILL		
CHECKED			WEIGHT 25.77 lbs	PROJECT -- CLIENT: --	
COMMENTS:	--				
			COMPANY: Name	DWG. NO. 2017_02_GWY100	SIZE B
			--	FILE NO. Xmpl_GWY5x45_r1_mods_r1b	REV 1
			--	SHEET 8 OF 11	

8 7 6 5 4 3 2 1

D
C
B
A



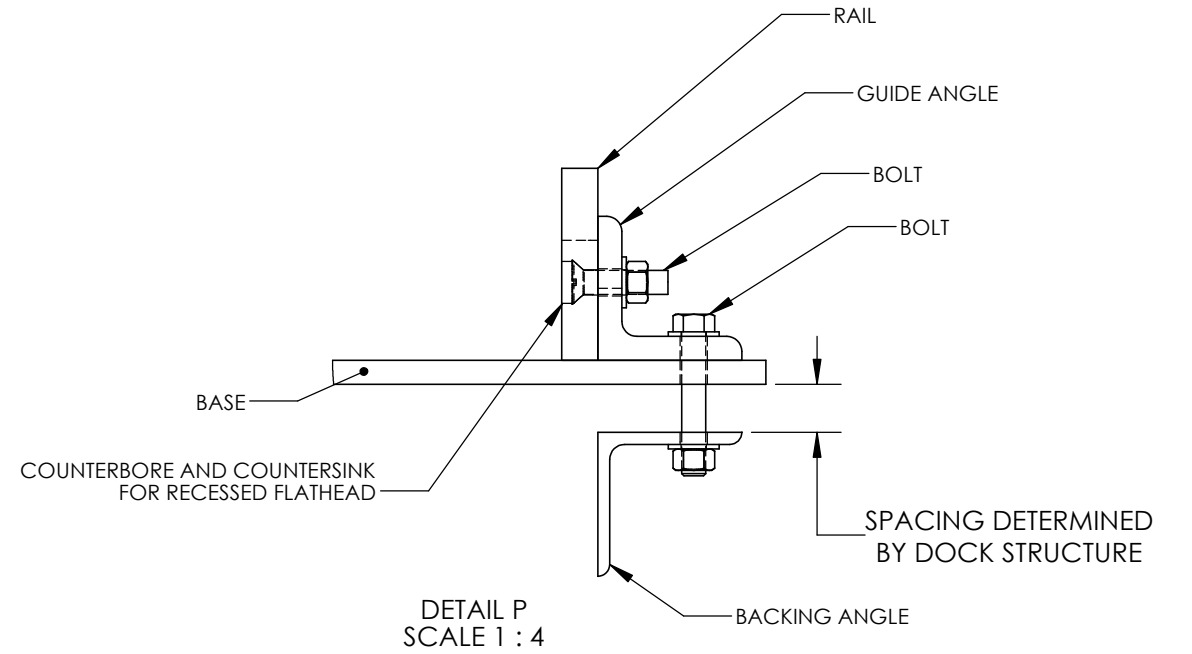
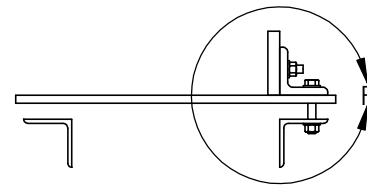
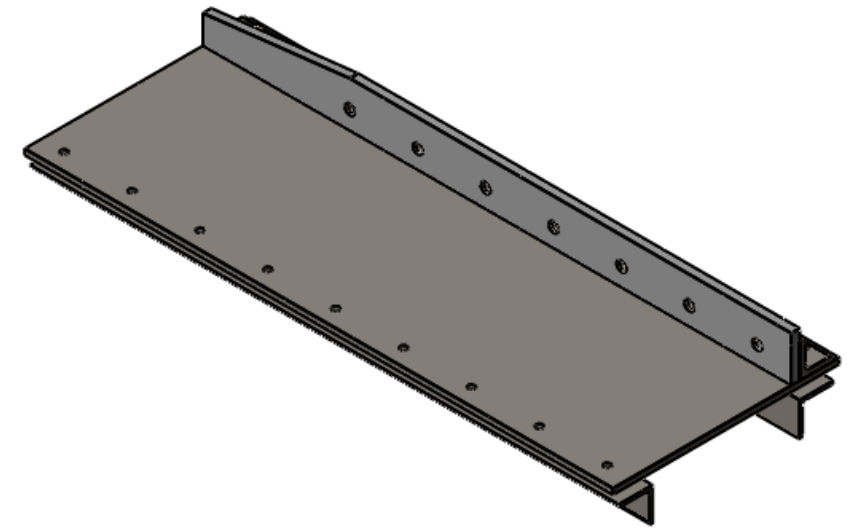
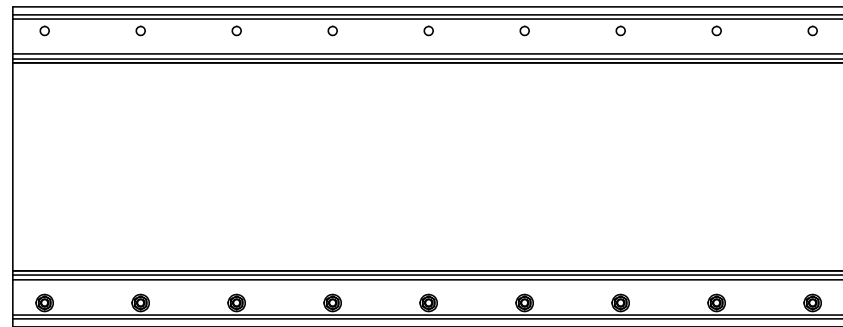
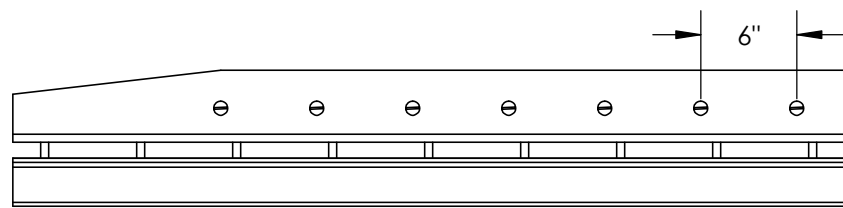
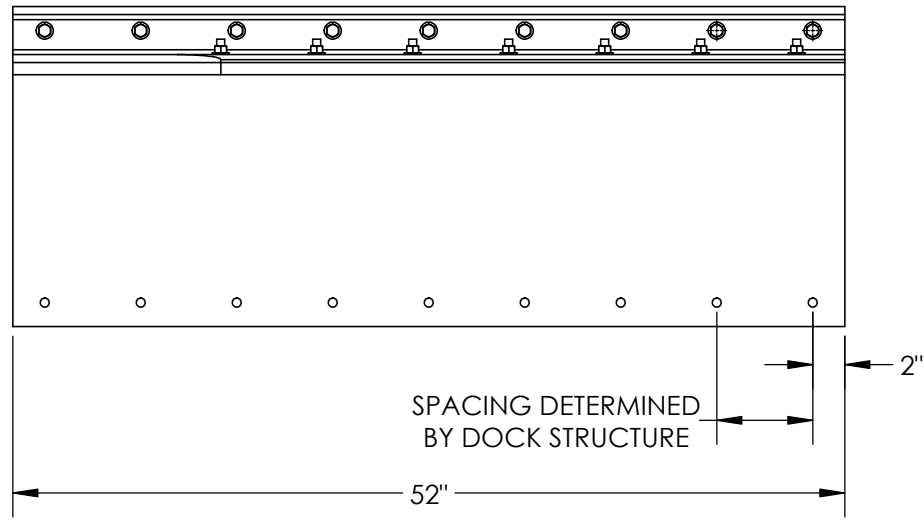
LOOSE FIT
NOMINAL SPACING

PROPRIETARY AND CONFIDENTIAL
THE INFORMATION CONTAINED IN THIS DRAWING IS THE PROPERTY OF
ERIC SCOTT ANY REPRODUCTION IN PART OR AS A WHOLE
WITHOUT THE WRITTEN PERMISSION OF ERIC SCOTT IS PROHIBITED.

	NAME	DATE	UNLESS OTHERWISE SPECIFIED: SCALE 1:6	SWINGLINK ASSEMBLY	
ENGINEER	Eric Scott		UNITS		
DRAWN	Eric Scott	2/24/2018	MATERIAL As Noted	DESCRIPTION: SwingLink Assembly, steel galvanized, stainless hardware	
CO.	CO		FINISH --		
CHECKED				PROJECT --	SIZE B
COMMENTS:				CLIENT: --	REV 1
			COMPANY: Name	DWG. NO. 2017_02_GWY100	
			--	FILE NO. Xmpl_GWY5x45_r1_mods_r1b	
			--	SHEET 9 OF 11	

8 7 6 5 4 3 2 1

SHOWN: RIGHT BASE ONLY, BUILD OPPOSITE FOR LEFT

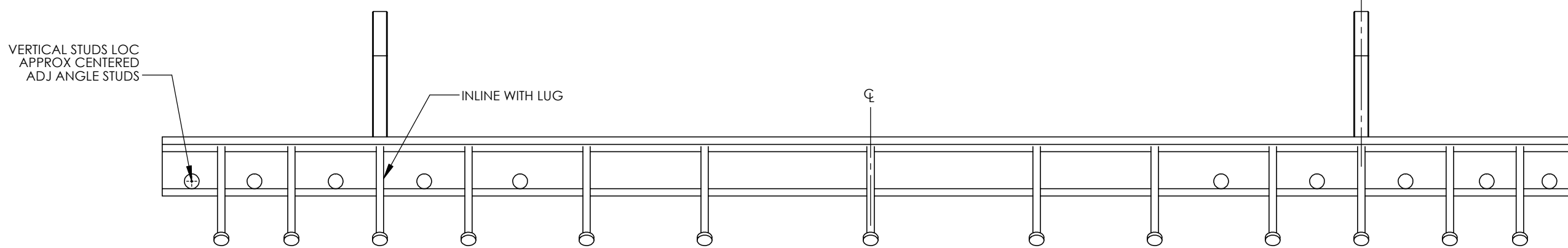
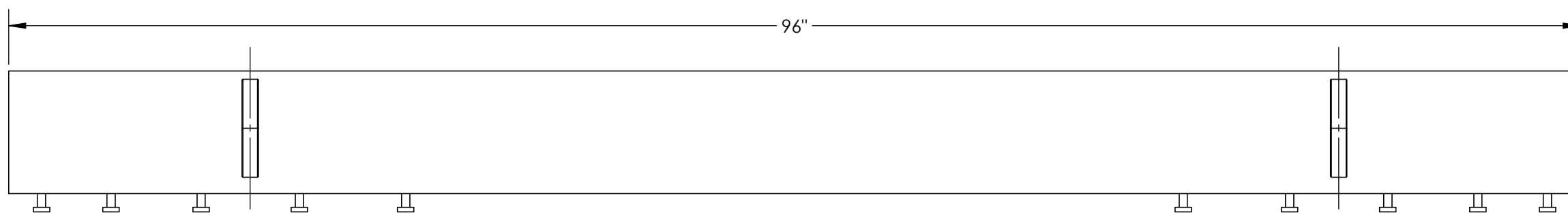
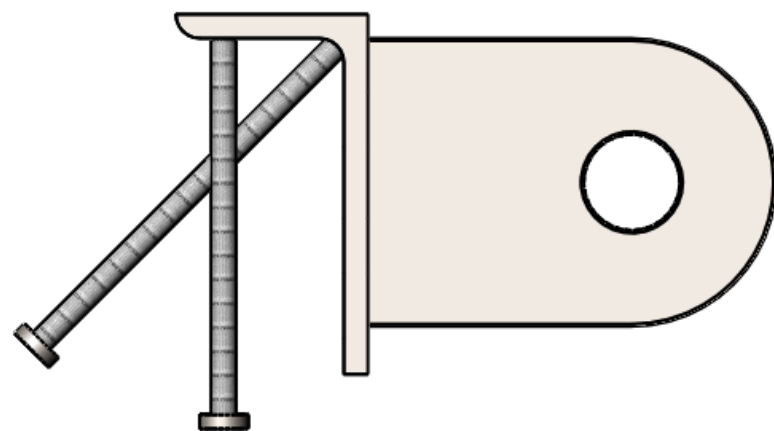


PROPRIETARY AND CONFIDENTIAL
THE INFORMATION CONTAINED IN THIS DRAWING IS THE PROPERTY OF ERIC SCOTT ANY REPRODUCTION IN PART OR AS A WHOLE WITHOUT THE WRITTEN PERMISSION OF ERIC SCOTT IS PROHIBITED.

		NAME	DATE	UNLESS OTHERWISE SPECIFIED:		GANGWAY ROLLER BASE / GUIDE	
ENGINEER	Eric Scott			SCALE	1:12	DESCRIPTION: Gangway roller base and rub rail guides	
DRAWN	Eric Scott	2/24/2018	UNITS	inch, lbs			
CO.	CO		MATERIAL	--			
CHECKED				FINISH	--	PROJECT	--
COMMENTS:	--					CLIENT:	--
				COMPANY: Name		SIZE	
				--		B	
				--		REV	
						1	
				DWG. NO. 2017_02_GWY100		SHEET 10 OF 11	
				FILE NO. Xmpl_GWY5x45_r1_mods_r1b			

8 7 6 5 4 3 2 1

NOTE: CONCRETE DRAWING (DONE BY OTHERS) SHOWS 3" REBAR COVER



NOTES:

STUD MATERIAL, SEE AWS D1.1 CH7, TBL 7.1- TYPE B
 COLD DRAWN BAR TENSILE 65KSI, YIELD 51KSI
 STUD HEAD, 1" x 9/32" MINIMUM
 STUD WELD, 5/16" MIN, RADIUS END TO MATCH SURFACE
 SEE AWS D1.1:2010 SECTION 7.5.5 FOR GUIDANCE ON OPTIONAL WELDING PROCEDURE
 HOT DIP GALVANIZE AFTER FABRICATION AND CLEANING

PROPRIETARY AND CONFIDENTIAL
 THE INFORMATION CONTAINED IN THIS DRAWING IS THE PROPERTY OF
 ERIC SCOTT ANY REPRODUCTION IN PART OR AS A WHOLE
 WITHOUT THE WRITTEN PERMISSION OF ERIC SCOTT IS PROHIBITED.

	NAME	DATE	UNLESS OTHERWISE SPECIFIED: SCALE 1:8	GANGWAY SHORE MOUNT	
ENGINEER	Eric Scott		UNITS in, lbs		
DRAWN	Eric Scott	2/24/2018	MATERIAL --	DESCRIPTION: Shore mount embedded in concrete, attach gangway	
CO.	CO		FINISH --		
CHECKED			WEIGHT 186.37	PROJECT --	SIZE B
COMMENTS:	--			CLIENT: --	REV 1
			COMPANY: Name	DWG. NO. 2017_02_GWY100	
			--	FILE NO. Xmpl_GWY5x45_r1_mods_r1b	
			--	SHEET 11 OF 11	

8 7 6 5 4 3 2 1