



**M.E.P.**

# **Marine Engineering Pipeworks**

**Copper Nickel  
Offshore Products And  
Services Guide  
2016**



# Introduction

Established in 1973 , Marine Engineering Pipeworks Limited hold an extensive range of copper alloys for use in the Offshore Industry.

This brochure is primarily for copper nickel 90/10 tube, fittings and flanges to the EEMUA standard as well as associated items used in conjunction with this publication.

This family run company is located in Sunderland in the North East of England and our experienced and knowledgeable staff work hard to ensure we meet both your urgent and long term requirements, providing a service Nationally and Worldwide.

We hope this brochure proves useful and suggest you also check out our other "Products and Services" on pages 58 and 59.

*“Time and tide...  
...wait for no man”*



## **Marine Engineering Pipeworks Ltd.**

Leechmere Industrial Estate, Grangetown, Sunderland, SR2 9TE, United Kingdom  
Tel: +44 191 521 1941 - Fax: +44 191 523 6954 - E-mail: [Info@Mepsun.com](mailto:Info@Mepsun.com) - Web: [www.Mepsun.com](http://www.Mepsun.com)

# **Contents**

## **Pipe**

Page 4

Seamless and Seam Welded  
16 and 20 Bar  
EEMUA 234:2015 Chapters 1 & 2  
(Formerly EEMUA 144)

## **Flanges**

Pages 5 - 22

16 and 20 Bar  
EEMUA 234:2015 Chapters 3 - 6  
(Formerly EEMUA 145)  
150 lb and 300 lb to ANSI B16.5

## **Butt Weld Fittings**

Pages 23 - 36

16 and 20 Bar  
EEMUA 234:2015 Chapters 7 & 13  
(Formerly EEMUA 146/1 & 146/7)

## **Machined Fittings**

Pages 37 - 61

Socket Weld and Threaded Fittings  
16 and 20 Bar  
EEMUA 234:2015 Chapters 8 - 12  
(Formerly EEMUA 146/2 - 146/6)

## **Products And Services**

Pages 62 - 63

Our other products and services available

## **Contact Details**

Page 64



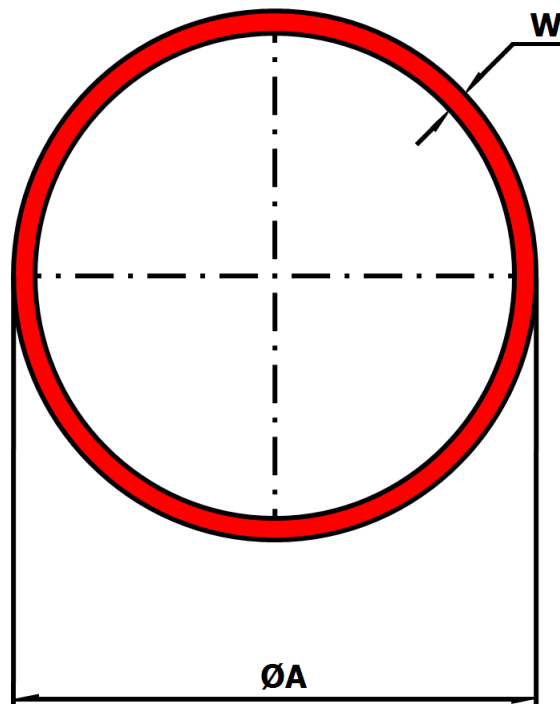
### **Marine Engineering Pipeworks Ltd.**

Leechmere Industrial Estate, Grangetown, Sunderland, SR2 9TE, United Kingdom  
Tel: +44 191 521 1941 - Fax: +44 191 523 6954 - E-mail: [Info@Mepsun.com](mailto:Info@Mepsun.com) - Web: [www.Mepsun.com](http://www.Mepsun.com)

# Pipe

90/10 CuNi UNS C7060X

**EEMUA 234:2015 Chapters 1 & 2**  
**(Formerly EEMUA 144/1 & 144/2)**



Nominal Size (Inch)	ØA (mm)	16 Bar		20 Bar	
		W (mm)	Weight (Kg/Mtr)	W (mm)	Weight (Kg/Mtr)
<b>Seamless</b>					
0.5	<b>16</b>	2	0.79	2	0.79
0.75	<b>25</b>	2	1.3	2	1.3
1	<b>30</b>	2.5	1.93	2.5	1.93
1.25	<b>38</b>	2.5	2.5	2.5	2.5
1.5	<b>44.5</b>	2.5	2.95	2.5	2.95
2	<b>57</b>	2.5	3.83	2.5	3.83
2.5	<b>76.1</b>	2.5	5.17	2.5	5.17
3	<b>88.9</b>	2.5	6.07	2.5	6.07
4	<b>108</b>	3	8.85	3	8.85
6	<b>159</b>	3	13.14	3.5	15.29
8	<b>219.1</b>	4	24.17	4.5	27.12
10	<b>267</b>	4.5	33.18	5.5	40.39
12	<b>323.9</b>	5.5	49.18	7	62.3
14	<b>368</b>	6.5	65.99	8	80.89
16	<b>419</b>	7	81	9	103.64
<b>Seamless or Seam Welded</b>					
18	<b>457.2</b>	8	100.93	9.5	119.45
20	<b>508</b>	8.5	119.24	11	153.54
<b>Seam Welded</b>					
24	<b>610</b>	10.5	176.79	13	217.97
28	<b>711</b>	12	235.58	15	293.22
32	<b>813</b>	13.5	303.14	17	380.06
36	<b>914</b>	15.5	391.14	19	477.6



## Marine Engineering Pipeworks Ltd.

Leechmere Industrial Estate, Grangetown, Sunderland, SR2 9TE, United Kingdom  
 Tel: +44 191 521 1941 - Fax: +44 191 523 6954 - E-mail: Info@Mepsun.com - Web: www.Mepsun.com

# **Flanges**

Manufactured in 90/10 Copper Nickel Alloy.  
16 and 20 Bar to EEMUA 234:2015 Chapters 3 - 6  
(Formerly EEMUA 145) material UNS C7060X.  
150lb and 300lb to ANSI B16.5, material UNS C70600.

<b>Solid Weld Neck Flanges</b>	Pages 6 - 9
<b>Composite Weld Neck Flanges</b>	Pages 10 - 14
<b>Solid Slip On Flanges</b>	Pages 15 - 16
<b>Composite Slip On Flanges</b>	Pages 17 - 18
<b>Solid Blind Flanges</b>	Pages 19 - 20
<b>Composite Blind Flanges</b>	Pages 21 - 22



## **Marine Engineering Pipeworks Ltd.**

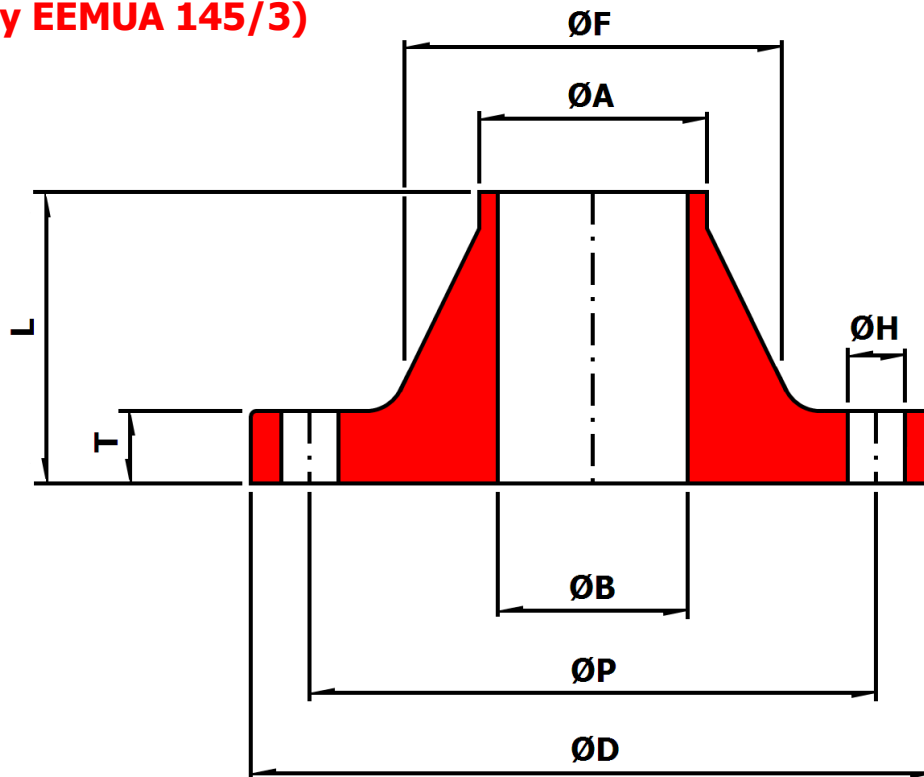
Leechmere Industrial Estate, Grangetown, Sunderland, SR2 9TE, United Kingdom  
Tel: +44 191 521 1941 - Fax: +44 191 523 6954 - E-mail: [Info@Mepsun.com](mailto:Info@Mepsun.com) - Web: [www.Mepsun.com](http://www.Mepsun.com)

# Solid Weld Neck Flange

## 16 Bar

90/10 CuNi UNS C7060X

**EEMUA 234:2015 Chapter 5**  
**(Formerly EEMUA 145/3)**



Raised Face also available

Nominal Size (Inch)	ØA (mm)	ØD (mm)	L (mm)	T (mm)	ØF (mm)	ØB (mm)	Drilling			Weight (Kg)
							ØP (mm)	No. Of Holes	ØH (mm)	
1/2	16	89	48	14	23	12	60.3	4	15.9	0.74
3/4	25	98	52	16	32	21	69.8	4	15.9	1.04
1	30	108	56	16	42	25	79.4	4	15.9	1.36
1.1/4	38	117	57	17	51	33.03	88.9	4	15.9	1.7
1.1/2	44.5	127	62	20	61	39.53	98.4	4	15.9	2.38
2	57	152	64	25	73	52.16	120.6	4	19	3.93
2.1/2	76.1	178	70	27	91	71.23	139.7	4	19	5.62
3	88.9	190	70	27	105	84.08	152.4	4	19	6.27
4	108	229	76	27	135	102.13	190.5	8	19	9.53
6	159	279	89	27	192	153.75	241.3	8	22.2	13.65
8	219.1	343	98	31	246	211.1	298.4	8	22.2	21.19
10	267	406	98	31	305	257.97	362	12	25.4	29.52
12	323.9	483	98	35	365	312.83	431.8	12	25.4	44.77
14	368	533	99	41	400	354.22	476.2	12	28.6	57.27
16	419	597	106	43	457	404.17	539.8	16	28.6	74.4
18	457.2	635	113	45	505	441.5	577.8	16	31.8	88.16
20	508	698	118	45	559	490.5	635	20	31.8	106.2
24	610	813	137	49	664	589.5	749.3	20	34.9	153.15
28	711	927	145	72	748	687.5	864	28	34.9	255.28
32	813	1060	160	72	876	786.5	978	28	41.1	291.45
36	914	1168	175	72	984	883.5	1086	32	41.1	356.45



## Marine Engineering Pipeworks Ltd.

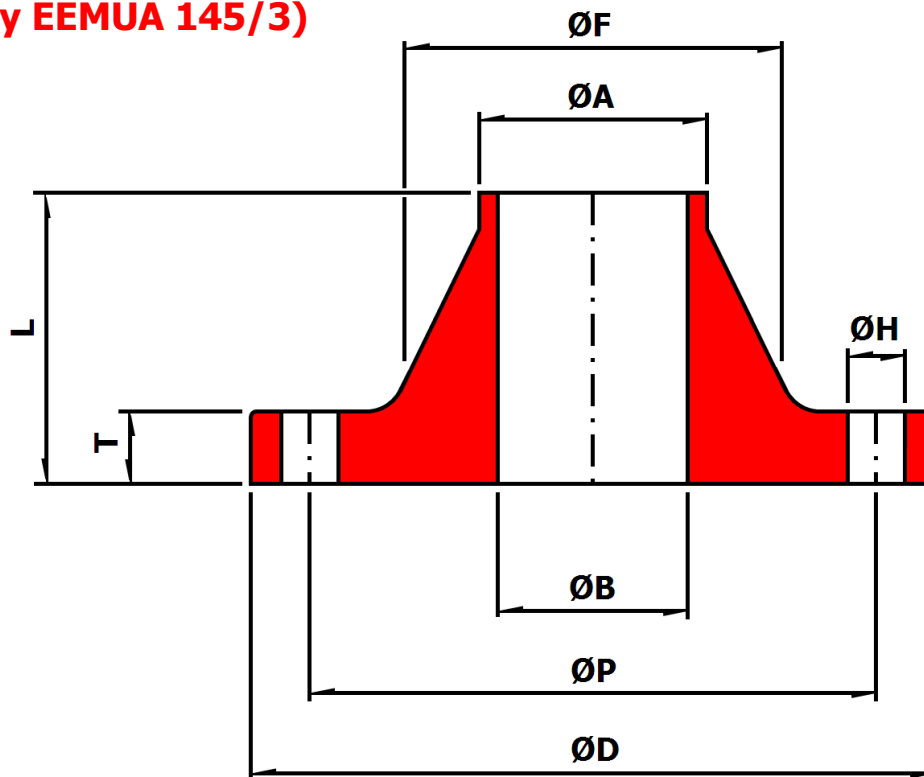
Leechmere Industrial Estate, Grangetown, Sunderland, SR2 9TE, United Kingdom  
 Tel: +44 191 521 1941 - Fax: +44 191 523 6954 - E-mail: Info@Mepsun.com - Web: www.Mepsun.com

# Solid Weld Neck Flange

## 20 Bar

90/10 CuNi UNS C7060X

**EEMUA 234:2015 Chapter 5**  
**(Formerly EEMUA 145/3)**



Nominal Size (Inch)	Raised Face also available						Drilling			Weight (Kg)
	$\text{ØA}$ (mm)	$\text{ØD}$ (mm)	L (mm)	T (mm)	$\text{ØF}$ (mm)	$\text{ØB}$ (mm)	$\text{ØP}$ (mm)	No. Of Holes	$\text{ØH}$ (mm)	
1/2	16	89	48	14	23	12	60.3	4	15.9	0.74
3/4	25	98	52	16	32	21	69.8	4	15.9	1.04
1	30	108	56	16	42	25	79.4	4	15.9	1.36
1.1/4	38	117	57	17	51	33.03	88.9	4	15.9	1.7
1.1/2	44.5	127	62	20	61	39.53	98.4	4	15.9	2.38
2	57	152	64	25	73	52.16	120.6	4	19	3.93
2.1/2	76.1	178	70	27	91	71.23	139.7	4	19	5.62
3	88.9	190	70	27	105	84.08	152.4	4	19	6.27
4	108	229	76	27	135	102.13	190.5	8	19	9.53
6	159	279	89	27	192	152.38	241.3	8	22.2	13.99
8	219.1	343	98	31	246	210.1	298.4	8	22.2	21.57
10	267	406	98	31	305	255.93	362	12	25.4	30.47
12	323.9	483	98	35	365	309.74	431.8	12	25.4	46.56
14	368	533	99	41	400	351	476.2	12	28.6	59.49
16	419	597	106	43	457	399.84	539.8	16	28.6	78.03
18	457.2	635	113	45	505	438.5	577.8	16	31.8	91.08
20	508	698	118	45	559	486.5	635	20	31.8	110.65
24	610	813	137	49	664	584.5	749.3	20	34.9	160.79
28	711	927	145	72	748	681.5	864	28	34.9	249.09
32	813	1060	160	72	876	779.5	978	28	41.1	303.95
36	914	1168	175	72	984	876.5	1086	32	41.1	371.8



## Marine Engineering Pipeworks Ltd.

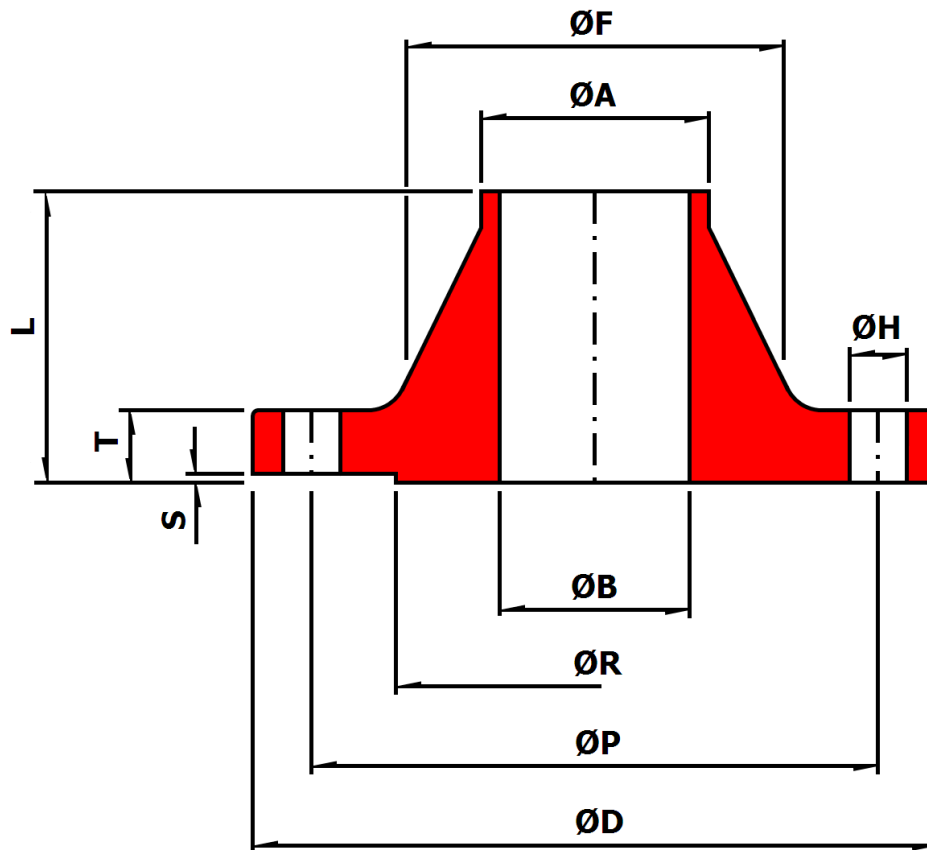
Leechmere Industrial Estate, Grangetown, Sunderland, SR2 9TE, United Kingdom  
 Tel: +44 191 521 1941 - Fax: +44 191 523 6954 - E-mail: Info@Mepsun.com - Web: www.Mepsun.com

# Solid Weld Neck Flange

## 150 lb

90/10 CuNi UNS C70600

**ANSI B 16.5**



Nominal Size Inch	ØA mm	ØD mm	L mm	T mm	ØF mm	ØB mm	ØR mm	S mm	Drilling			Weight Kg
									ØP mm	No. Of Holes	ØH mm	
1/2	16	88.9	47.6	11.1	30.2	12	34.9	1.6	60.3	4	15.9	0.68
3/4	25	98.4	52.4	12.7	38.1	21	42.9	1.6	69.8	4	15.9	0.91
1	30	107.9	55.6	14.3	49.2	25	50.8	1.6	79.4	4	15.9	1.25
1.1/4	38	117.5	57.1	15.9	58.7	33.03	63.5	1.6	88.9	4	15.9	1.58
1.1/2	44.5	127	61.9	17.5	65.1	39.53	73	1.6	98.4	4	15.9	2.05
2	57	152.4	63.5	19.1	77.8	52.16	92.1	1.6	120.6	4	19	3.05
2.1/2	76.1	177.8	69.8	22.2	90.5	71.23	104.8	1.6	139.7	4	19	5.1
3	88.9	190.5	69.8	23.8	107.9	84.08	127	1.6	152.4	4	19	5.2
4	108	228.6	76.2	23.8	134.9	102.1	157.2	1.6	190.5	8	19	7.9
6	159	279.4	88.9	25.4	192.1	152.4	215.9	1.6	241.3	8	22.2	12.2
8	219.1	342.9	101.6	28.6	246.1	210.1	269.9	1.6	298.4	8	22.2	20
10	267	406.4	101.6	30.2	304.8	255.9	323.8	1.6	361.9	12	25.4	27
12	323.9	482.6	114.3	31.8	365.1	309.7	381	1.6	431.8	12	25.4	42
14	368	533.4	127	34.9	400	351	412.75	1.6	476.2	12	28.6	53
16	419	596.9	127	36.5	457.2	399.8	482.6	1.6	539.7	16	28.6	66
18	457.2	635	139.7	39.7	504.8	438.5	533.4	1.6	577.8	16	31.7	72
20	508	698.5	144.5	42.9	558.8	486.5	584.2	1.6	635	20	31.7	87
24	610	812.8	152.4	47.6	663.6	584.5	692.1	1.6	749.3	20	34.9	134



## Marine Engineering Pipeworks Ltd.

Leechmere Industrial Estate, Grangetown, Sunderland, SR2 9TE, United Kingdom  
 Tel: +44 191 521 1941 - Fax: +44 191 523 6954 - E-mail: Info@Mepsun.com - Web: www.Mepsun.com

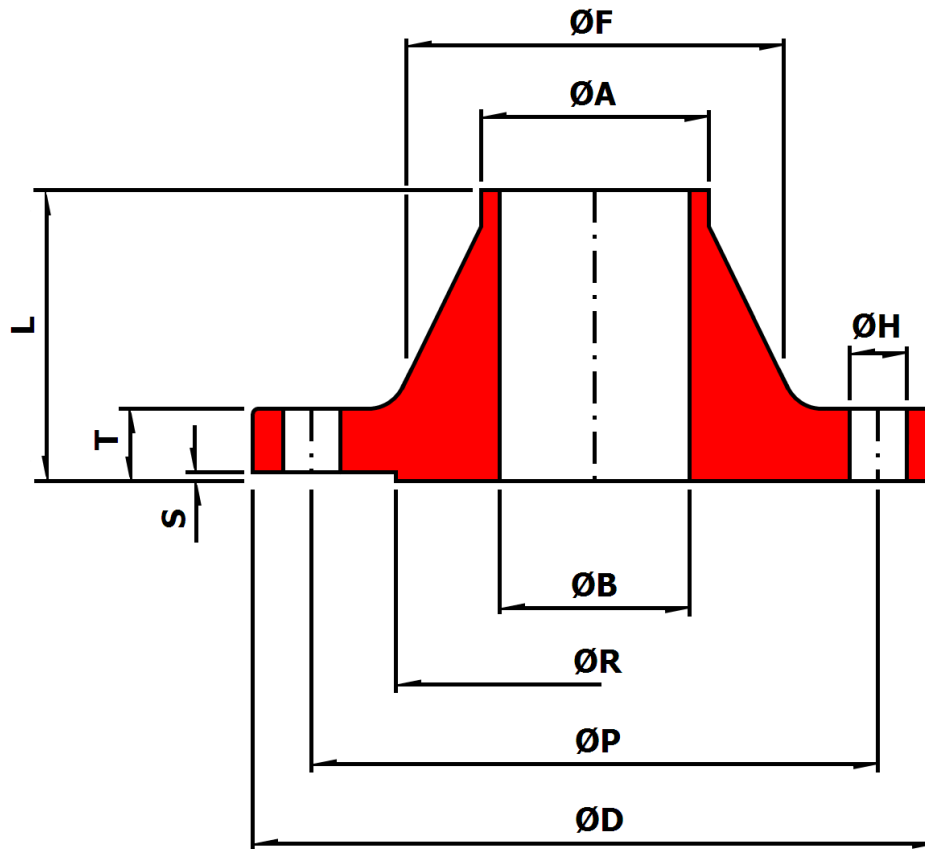


# Solid Weld Neck Flange

## 300 lb

90/10 CuNi UNS C70600

**ANSI B 16.5**



Nominal Size Inch	ØA mm	ØD mm	L mm	T mm	ØF mm	ØB mm	ØR mm	S mm	Drilling			Weight Kg
									ØP mm	No. Of Holes	ØH mm	
1/2	16	95.2	52.4	14.3	38.1	12	34.9	1.6	66.7	4	15.9	1.72
3/4	25	117.5	57.1	15.9	47.6	21	42.9	1.6	82.5	4	19	2.06
1	30	123.8	61.9	17.5	54	25	50.8	1.6	88.9	4	19	2.29
1.1/4	38	133.3	65.1	19	63.5	33.03	63.5	1.6	98.4	4	19	2.86
1.1/2	44.5	155.6	68.3	20.6	69.8	39.53	73	1.6	114.3	4	22.2	4.01
2	57	165.1	69.8	22.2	84.1	52.16	92.1	1.6	127	8	19	4.58
2.1/2	76.1	190.5	76.2	25.4	100	71.23	104.8	1.6	149.2	8	22.2	5.73
3	88.9	209.5	79.4	28.6	117.5	84.08	127	1.6	168.3	8	22.2	8.02
4	108	254	85.7	31.8	146.1	102.1	157.2	1.6	200	8	22.2	12.6
6	159	317.5	98.4	36.5	206.4	152.4	215.9	1.6	269.9	12	22.2	21.76
8	219.1	381	111.1	41.3	260.4	210.1	269.9	1.6	330.2	12	25.4	34.35
10	267	444.5	117.5	47.6	320.7	255.9	323.8	1.6	387.3	16	28.6	46.95
12	323.9	520.7	130.2	50.8	374.6	309.7	381	1.6	450.8	16	31.7	70.99
14	368	584.2	142.9	54	425.4	351	412.75	1.6	514.3	20	31.7	96.18
16	419	647.7	146.1	57.2	482.6	399.8	482.6	1.6	571.5	20	34.9	127.1
18	457.2	711.2	158.7	60.3	533.3	438.5	533.4	1.6	628.6	24	34.9	158.01
20	508	774.7	161.9	63.5	587.4	486.5	584.2	1.6	685.8	24	34.9	195.8
24	610	914.4	168.3	69.8	701.7	584.5	692.1	1.6	812.8	24	41.3	283



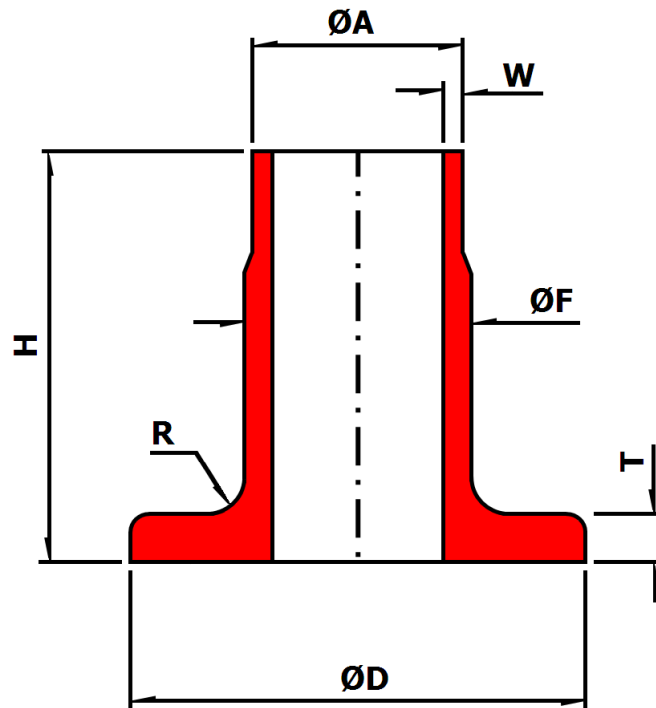
## Marine Engineering Pipeworks Ltd.

Leechmere Industrial Estate, Grangetown, Sunderland, SR2 9TE, United Kingdom  
 Tel: +44 191 521 1941 - Fax: +44 191 523 6954 - E-mail: Info@Mepsun.com - Web: www.Mepsun.com

# Composite Weld Neck Inner Flange Long Pattern

90/10 CuNi UNS C7060X

**EEMUA 234:2015 Chapter 3.4**  
**(Formerly EEMUA 145/1A)**



Nominal Size (Inch)	ØA (mm)	ØD (mm)	H (mm)	T (mm)	ØF (mm)	R (mm)	16 Bar		20 Bar	
							W (mm)	Weight (Kg)	W (mm)	Weight (Kg)
1/2	16	40	51	4	18	2	2	0.09	2	0.09
3/4	25	50	51	5	27	3	2	0.19	2	0.19
1	30	60	51	5	32	4	2.5	0.23	2.5	0.23
1.1/4	38	70	51	5	40	4	2.5	0.29	2.5	0.29
1.1/2	44.5	80	51	6	46.5	4	2.5	0.44	2.5	0.44
2	57	99	64	6	59	5	2.5	0.61	2.5	0.61
2.1/2	76.1	120	64	6	78	5	2.5	0.8	2.5	0.8
3	88.9	130	64	7	91	5	2.5	0.97	2.5	0.97
4	108	158	76	7	110	5	3	1.5	3	1.5
6	159	212	89	9	161.5	5	3	2.9	3.5	2.9
8	219.1	270	102	9	222	5	4	5.1	4.5	5.2
10	267	320	127	9	270	5	4.5	8.9	5.5	9.8
12	323.9	370	152	11	327	7	5.5	13.8	7	15.4
14	368	430	152	11	371	7	6.5	16.6	8	19
16	419	482	152	12	422	7	7	20.25	9	23.95
18	457.2	530	152	12	460	7	8	23.6	9.5	26.4
20	508	585	152	12	511	7	8.5	28.65	11	33.85
24	610	685	152	14	613	9	10.5	39.25	13	45.5
28	711	800	190	19	719	9	12	75.3	15	86.2
32	813	905	190	20.5	827	9	13.5	94.6	17	100.15
36	914	1000	190	22	922	9	15.5	115.55	19	131.95



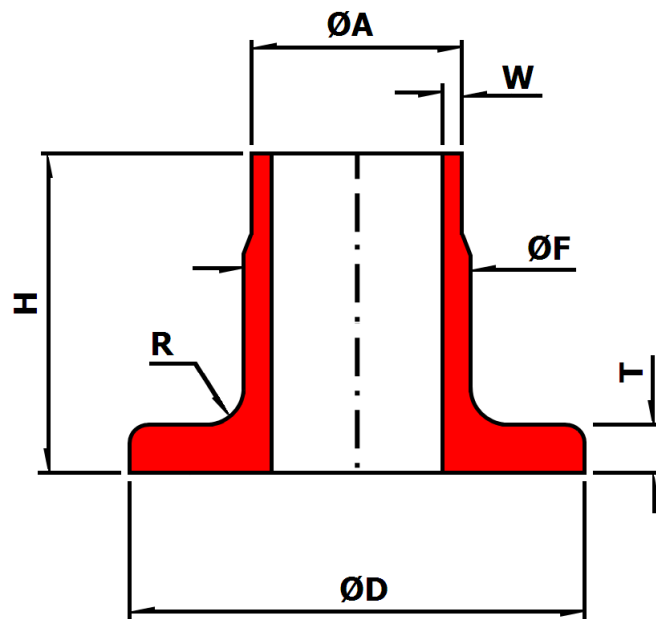
## Marine Engineering Pipeworks Ltd.

Leechmere Industrial Estate, Grangetown, Sunderland, SR2 9TE, United Kingdom  
Tel: +44 191 521 1941 - Fax: +44 191 523 6954 - E-mail: Info@Mepsun.com - Web: www.Mepsun.com

# Composite Weld Neck Inner Flange Short Pattern

90/10 CuNi UNS C7060X

**EEMUA 234:2015 Chapter 3.4**  
**(Formerly EEMUA 145/1A)**



Nominal Size (Inch)	ØA (mm)	ØD (mm)	H (mm)	T (mm)	ØF (mm)	R (mm)	16 Bar		20 Bar	
							W (mm)	Weight (Kg)	W (mm)	Weight (Kg)
1/2	16	40	35	4	18	2	0.07	2	0.07	
3/4	25	50	40	5	27	3	0.16	2	0.16	
1	30	60	40	5	32	4	0.2	2.5	0.2	
1.1/4	38	70	40	5	40	4	0.25	2.5	0.25	
1.1/2	44.5	80	45	6	46.5	4	0.42	2.5	0.42	
2	57	99	45	6	59	5	0.5	2.5	0.5	
2.1/2	76.1	120	45	6	78	5	0.67	2.5	0.67	
3	88.9	130	50	7	91	5	0.86	2.5	0.86	
4	108	158	50	7	110	5	1.18	3	1.2	
6	159	212	50	9	161.5	5	2.2	3.5	2.2	
8	219.1	270	50	9	222	5	3.2	4.5	3.3	
10	267	320	50	9	270	5	3.9	5.5	4.2	
12	323.9	370	50	11	327	7	6.5	7	6.8	
14	368	430	50	11	371	7	7.45	8	8.2	
16	419	482	50	12	422	7	9.2	9	10.35	
18	457.2	530	50	12	460	7	11.45	9.5	12.4	
20	508	585	50	12	511	7	13.4	11	15.1	
24	610	685	60	14	613	9	20.75	13	23.25	
28	711	800	60	19	719	9	33.35	15	36.8	
32	813	905	60	20.5	821	9	42.25	17	46.85	
36	914	1000	60	22	922	9	49.35	19	54.55	



## Marine Engineering Pipeworks Ltd.

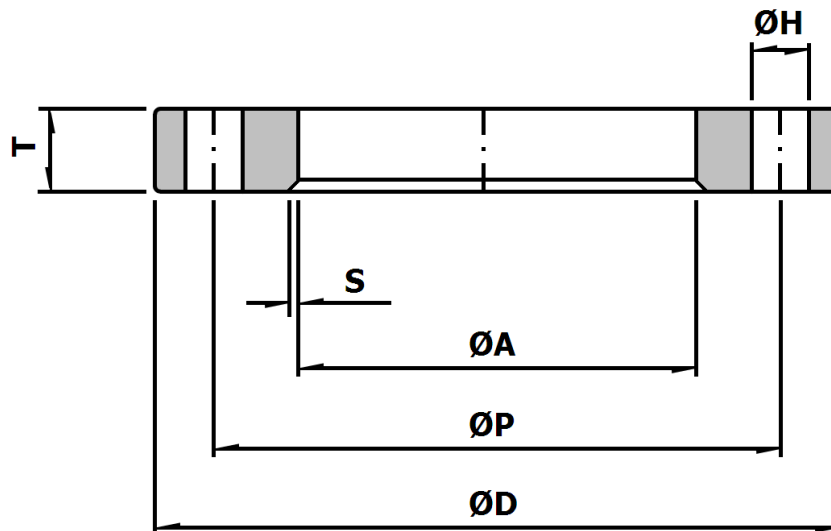
Leechmere Industrial Estate, Grangetown, Sunderland, SR2 9TE, United Kingdom  
Tel: +44 191 521 1941 - Fax: +44 191 523 6954 - E-mail: Info@Mepsun.com - Web: www.Mepsun.com

# Composite Weld Neck Backing Flange 150 lb

Galvanized Carbon Steel A105 / A350 LF2

Available Epoxy Coated

**EEMUA 234:2015 Chapter 3.5**  
**(Formerly EEMUA 145/1B)**



Nominal Size (Inch)	Actual Size (mm)	ØD (mm)	T (mm)	ØA (mm)	S (mm)	Drilling			Weight (Kg)
						ØP (mm)	No. Of Holes	ØH (mm)	
1/2	16	89	14	19	2	60.3	4	15.9	0.6
3/4	25	98	14	28	3	69.8	4	15.9	0.8
1	30	108	14	33	3	79.4	4	15.9	0.9
1.1/4	38	117	14	41	3	88.9	4	15.9	1.1
1.1/2	44.5	127	14	48	3	98.4	4	15.9	1.2
2	57	152	18	62	3	120.6	4	19	2.1
2.1/2	76.1	178	18	81	3	139.7	4	19	2.6
3	88.9	190	19	94	3	152.4	4	19	2.9
4	108	229	24	113	3	190.5	8	19	5.9
6	159	279	27	164	4	241.3	8	22.2	8.4
8	219.1	343	31	225	5	298.4	8	22.2	12.35
10	267	406	38	273	5	362	12	25.4	19.7
12	323.9	483	41	330	7	431.8	12	25.4	32.2
14	368	533	45	374	7	476.2	12	28.6	38.2
16	419	597	51	426	7	539.8	16	28.6	52.15
18	457.2	635	52	465	7	577.8	16	31.8	54.05
20	508	698	58	517	7	635	20	31.8	73.2
24	610	813	71	618	9	749.3	20	34.9	114.25
28	711	927	81	727	9	864	28	34.9	151.8
32	813	1060	95	829	9	978	28	41.1	233.5
36	914	1168	105	931	9	1086	32	41.1	294.1



## Marine Engineering Pipeworks Ltd.

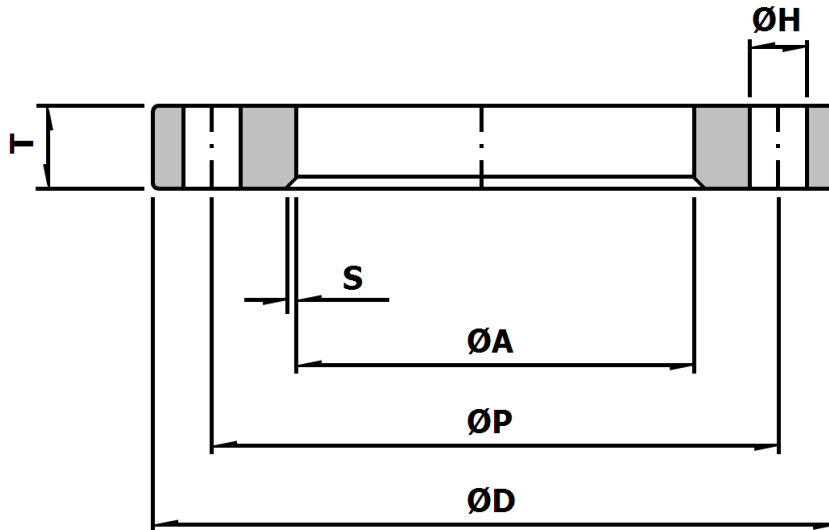
Leechmere Industrial Estate, Grangetown, Sunderland, SR2 9TE, United Kingdom  
Tel: +44 191 521 1941 - Fax: +44 191 523 6954 - E-mail: Info@Mepsun.com - Web: www.Mepsun.com

# Composite Weld Neck Backing Flange 150 lb

Galvanized Carbon Steel A105 / A350 LF2

Available Epoxy Coated

**ANSI B 16.5**



Hubbed Type also available

Nominal Size (Inch)	Actual Size (mm)	ØD (mm)	T (mm)	ØA (mm)	S (mm)	Drilling			Weight (Kg)
						ØP (mm)	No. Of Holes	ØH (mm)	
1/2	<b>16</b>	88.9	11.1	22	2	60.3	4	15.9	0.8
3/4	<b>25</b>	98.4	12.7	28	3	69.8	4	15.9	0.9
1	<b>30</b>	107.9	14.3	33	3	79.4	4	15.9	1
1.1/4	<b>38</b>	117.5	15.9	41	3	88.9	4	15.9	1.3
1.1/2	<b>44.5</b>	127	17.5	48	3	98.4	4	15.9	1.4
2	<b>57</b>	152.4	19	62	3	120.6	4	19	2.3
2.1/2	<b>76.1</b>	177.8	22.2	81	3	139.7	4	19	3.2
3	<b>88.9</b>	190.5	23.8	94	3	152.4	4	19	3.6
4	<b>108</b>	228.6	23.8	113	3	190.5	8	19	5.9
6	<b>159</b>	279.4	25.4	164	4	241.3	8	22.2	8.6
8	<b>219.1</b>	342.9	28.6	225	5	298.4	8	22.2	13.6
10	<b>267</b>	406.4	30.2	273	5	361.9	12	25.4	19.5
12	<b>323.9</b>	482.6	31.7	330	7	431.8	12	25.4	29
14	<b>368</b>	533.4	34.9	374	7	476.2	12	28.6	45
16	<b>419</b>	596.9	36.5	426	7	539.7	16	28.6	58
18	<b>457.2</b>	635	39.7	465	7	577.8	16	31.7	66
20	<b>508</b>	698.5	42.9	517	7	635	20	31.7	84
24	<b>610</b>	812.8	47.6	618	9	749.3	20	34.9	118



## Marine Engineering Pipeworks Ltd.

Leechmere Industrial Estate, Grangetown, Sunderland, SR2 9TE, United Kingdom  
Tel: +44 191 521 1941 - Fax: +44 191 523 6954 - E-mail: Info@Mepsun.com - Web: www.Mepsun.com

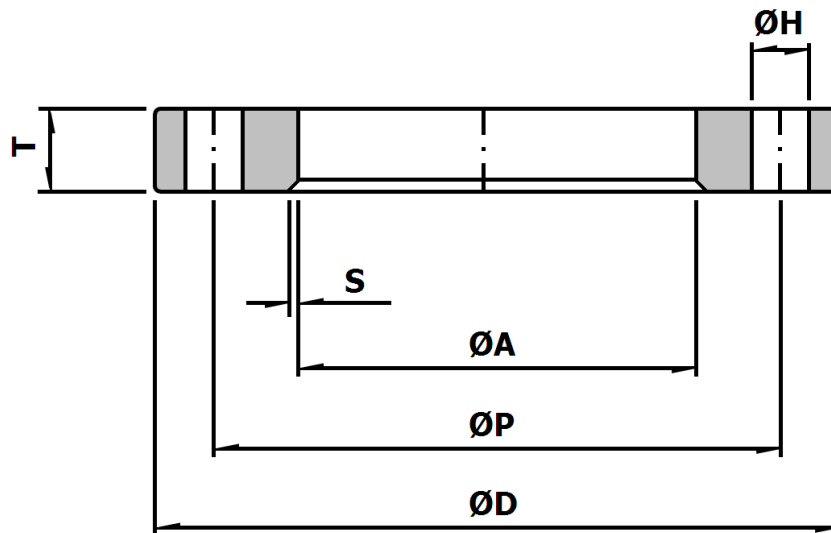
# Composite Weld Neck Backing Flange

## 300 lb

Galvanized Carbon Steel A105 / A350 LF2

Available Epoxy Coated

**ANSI B 16.5**



Hubbed Type also available

Nominal Size (Inch)	Actual Size (mm)	ØD (mm)	T (mm)	ØA (mm)	S (mm)	Drilling			Weight (Kg)
						ØP (mm)	No. Of Holes	ØH (mm)	
1/2	<b>16</b>	95.2	14.3	22	2	66.7	4	15.9	1.2
3/4	<b>25</b>	117.5	15.9	28	3	82.5	4	19	1.3
1	<b>30</b>	123.8	17.5	33	3	88.9	4	19	1.4
1.1/4	<b>38</b>	133.3	19	41	3	98.4	4	19	1.8
1.1/2	<b>44.5</b>	155.6	20.6	48	3	114.3	4	22.2	2.7
2	<b>57</b>	165.1	22.2	62	3	127	8	19	3.2
2.1/2	<b>76.1</b>	190.5	25.4	81	3	149.2	8	22.2	4.5
3	<b>88.9</b>	209.5	28.6	94	3	168.3	8	22.2	5.9
4	<b>108</b>	254	31.7	113	3	200	8	22.2	10
6	<b>159</b>	317.5	36.5	164	4	269.9	12	22.2	17.7
8	<b>219.1</b>	381	41.3	225	5	330.2	12	25.4	26.3
10	<b>267</b>	444.5	47.6	273	5	387.3	16	28.6	41
12	<b>323.9</b>	520.7	50.8	330	7	450.8	16	31.7	63
14	<b>368</b>	584.2	54	374	7	514.3	20	31.7	86
16	<b>419</b>	647.7	57.1	426	7	571.5	20	34.9	109
18	<b>457.2</b>	711.2	60.3	465	7	628.6	24	34.9	138
20	<b>508</b>	774.7	63.5	517	7	685.8	24	34.9	170
24	<b>610</b>	914.4	69.8	618	9	812.8	24	41.3	241



## Marine Engineering Pipeworks Ltd.

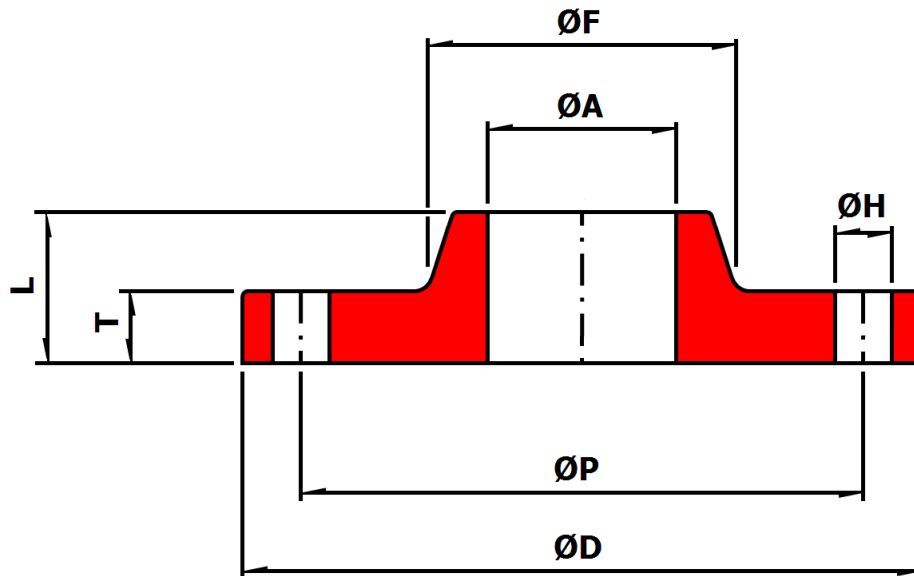
Leechmere Industrial Estate, Grangetown, Sunderland, SR2 9TE, United Kingdom  
 Tel: +44 191 521 1941 - Fax: +44 191 523 6954 - E-mail: Info@Mepsun.com - Web: www.Mepsun.com

# Solid Slip On Flange

## 150 lb

90/10 CuNi UNS C7060X

**EEMUA 234:2015 Chapter 6**  
**(Formerly EEMUA 145/4)**



Nominal Size (Inch)	Actual Size (mm)	Raised Face also available					Drilling			Weight (Kg)
		ØD (mm)	L (mm)	T (mm)	ØF (mm)	ØA (mm)	ØP (mm)	No. Of Holes	ØH (mm)	
1/2	<b>16</b>	89	20	14	23	16.07	60.3	4	15.9	1.15
3/4	<b>25</b>	98	24	16	32	25.08	69.8	4	15.9	1.2
1	<b>30</b>	108	24	16	47	30.08	79.4	4	15.9	1.3
1.1/4	<b>38</b>	117	26	17	51	38.1	88.9	4	15.9	1.7
1.1/2	<b>44.5</b>	127	26	20	61	44.6	98.4	4	15.9	1.8
2	<b>57</b>	152	28	25	73	57.23	120.6	4	19	2.9
2.1/2	<b>76.1</b>	178	32	27	91	76.33	139.7	4	19	4.3
3	<b>88.9</b>	190	34	27	105	89.18	152.4	4	19	4.4
4	<b>108</b>	229	40	27	135	108.38	190.5	8	19	7.3



## Marine Engineering Pipeworks Ltd.

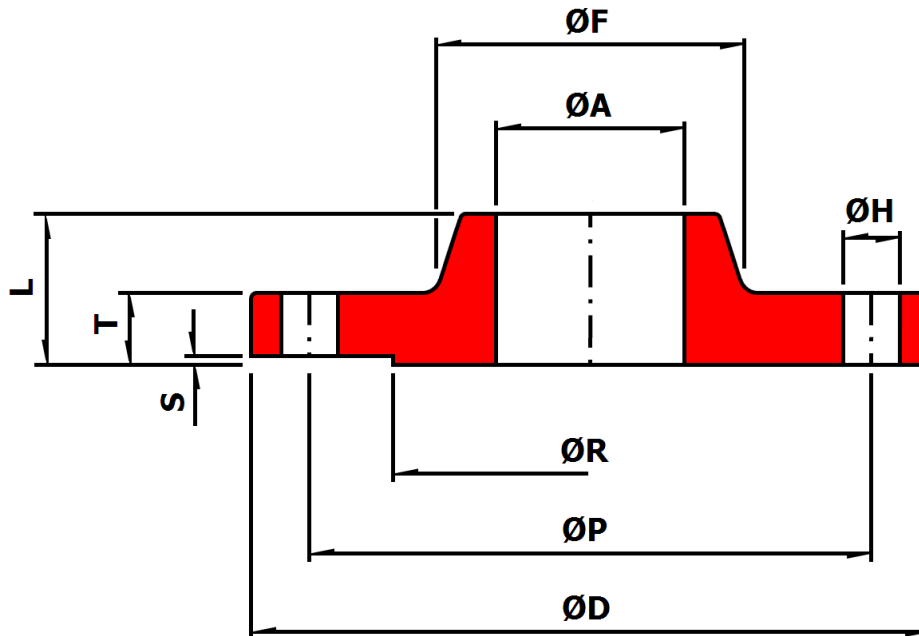
Leechmere Industrial Estate, Grangetown, Sunderland, SR2 9TE, United Kingdom  
 Tel: +44 191 521 1941 - Fax: +44 191 523 6954 - E-mail: Info@Mepsun.com - Web: www.Mepsun.com

# Solid Slip On Flange

## 150 lb

90/10 CuNi UNS C70600

**ANSI B 16.5**



Nominal (Inch)	Actual (mm)	ØD (mm)	L (mm)	T (mm)	ØF (mm)	ØA (mm)	ØR (mm)	S (mm)	Drilling			Weight (Kg)
									ØP (mm)	No. Of Holes	ØH (mm)	
1/2	<b>16</b>	88.9	15.9	11.1	30.2	16.2	34.9	1.6	60.3	4	15.9	0.9
3/4	<b>25</b>	98.4	15.9	12.7	38.1	25.2	42.9	1.6	69.8	4	15.9	1.1
1	<b>30</b>	107.9	17.5	14.3	49.2	30.2	50.8	1.6	79.4	4	15.9	1.2
1.1/4	<b>38</b>	117.5	20.6	15.9	58.7	38.3	63.5	1.6	88.9	4	15.9	1.5
1.1/2	<b>44.5</b>	127	22.2	17.5	65.1	44.8	73	1.6	98.4	4	15.9	1.6
2	<b>57</b>	152.4	25.4	19.1	77.8	57.4	92.1	1.6	120.6	4	19	2.7
2.1/2	<b>76.1</b>	177.8	28.6	22.2	90.5	76.5	104.8	1.6	139.7	4	19	4.1
3	<b>88.9</b>	190.5	30.2	23.8	107.9	89.4	127	1.6	152.4	4	19	4.1
4	<b>108</b>	228.6	33.3	23.8	134.9	108.5	157.2	1.6	190.5	8	19	7
6	<b>159</b>	279.4	39.7	25.4	192.1	159.8	215.9	1.6	241.3	8	22.2	9.9
8	<b>219.1</b>	342.9	44.4	28.6	246.1	220.3	269.9	1.6	298.4	8	22.2	15.7
10	<b>267</b>	406.4	49.2	30.2	304.8	268.4	323.8	1.6	361.9	12	25.4	22.8
12	<b>323.9</b>	482.6	55.6	31.8	365.1	325.4	381	1.6	431.8	12	25.4	33.9
14	<b>368</b>	533.4	57.1	34.9	400	369.5	412.75	1.6	476.2	12	28.6	45
16	<b>419</b>	596.9	63.5	36.5	457.2	420.5	482.6	1.6	539.7	16	28.6	49
18	<b>457.2</b>	635	68.3	39.7	504.8	458.7	533.4	1.6	577.8	16	31.7	63
20	<b>508</b>	698.5	73	42.9	558.8	509.5	584.2	1.6	635	20	31.7	81.5
24	<b>610</b>	812.8	82.5	47.6	663.6	611.5	692.1	1.6	749.3	20	34.9	105.55



## Marine Engineering Pipeworks Ltd.

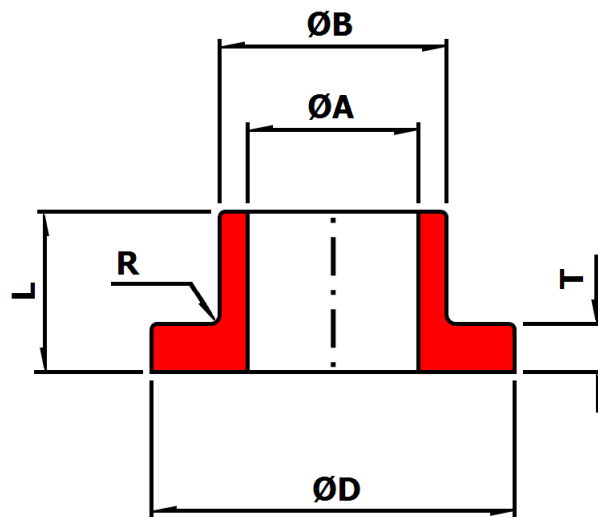
Leechmere Industrial Estate, Grangetown, Sunderland, SR2 9TE, United Kingdom  
 Tel: +44 191 521 1941 - Fax: +44 191 523 6954 - E-mail: Info@Mepsun.com - Web: www.Mepsun.com



# Composite Slip On Inner Flange

90/10 CuNi UNS C7060X

**EEMUA 234:2015 Chapter 4.4**  
**(Formerly EEMUA 145/2A)**



Nominal Size (Inch)	Actual Size (mm)	$\text{ØD}$ (mm)	L (mm)	T (mm)	$\text{ØB}$ (mm)	$\text{ØA}$ (mm)	R (mm)	Weight (Kg)
1/2	<b>16</b>	40	16	5	21	16.07	1	0.06
3/4	<b>25</b>	53	16	5	31	25.08	1	0.1
1	<b>30</b>	60	18	5	36	30.08	1	0.14
1.1/4	<b>38</b>	70	18	5	45	38.1	1	0.2
1.1/2	<b>44.5</b>	80	19	5	51	44.6	1	0.3
2	<b>57</b>	99	19	6	67	57.23	1	0.4
2.1/2	<b>76.1</b>	120	19	6	87	76.33	1	0.5
3	<b>88.9</b>	130	21	7	100	89.18	1	0.7
4	<b>108</b>	158	23	7	120	108.38	1	0.9



## Marine Engineering Pipeworks Ltd.

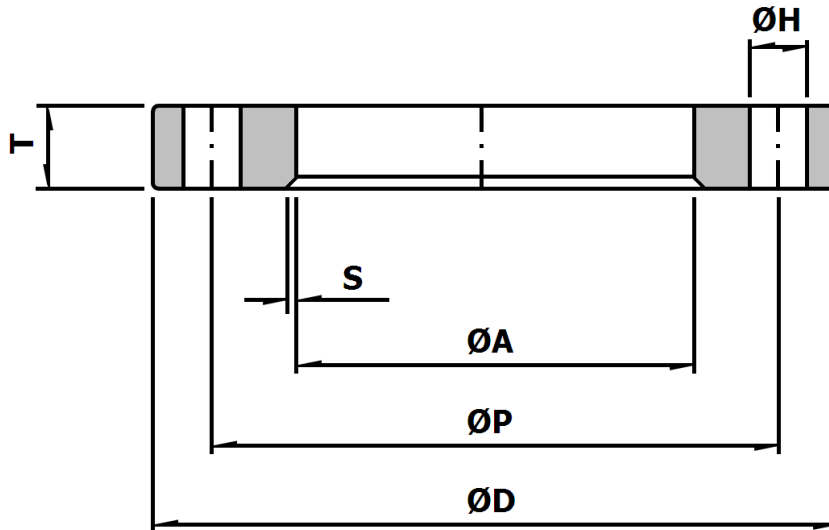
Leechmere Industrial Estate, Grangetown, Sunderland, SR2 9TE, United Kingdom  
 Tel: +44 191 521 1941 - Fax: +44 191 523 6954 - E-mail: Info@Mepsun.com - Web: www.Mepsun.com

# Composite Slip On Backing Flange 150 lb

Galvanized Carbon Steel A105 / A350 LF2

Available Epoxy Coated

**EEMUA 234:2015 Chapter 4.5**  
**(Formerly EEMUA 145/2B)**



Nominal Size (Inch)	Actual Size (mm)	ØD (mm)	T (mm)	ØA (mm)	S (mm)	Drilling			Weight (Kg)
						ØP (mm)	No. Of Holes	ØH (mm)	
1/2	<b>16</b>	89	14	23	3	60.3	4	15.9	0.75
3/4	<b>25</b>	98	14	33	3	69.8	4	15.9	0.8
1	<b>30</b>	108	14	38	3	79.4	4	15.9	0.95
1.1/4	<b>38</b>	117	14	47	3	88.9	4	15.9	1.1
1.1/2	<b>44.5</b>	127	14	53	3	98.4	4	15.9	1.15
2	<b>57</b>	152	18	69	3	120.6	4	19	2.1
2.1/2	<b>76.1</b>	178	18	89	3	139.7	4	19	2.6
3	<b>88.9</b>	190	19	103	3	152.4	4	19	2.9
4	<b>108</b>	229	24	123	3	190.5	4	19	5.9



## Marine Engineering Pipeworks Ltd.

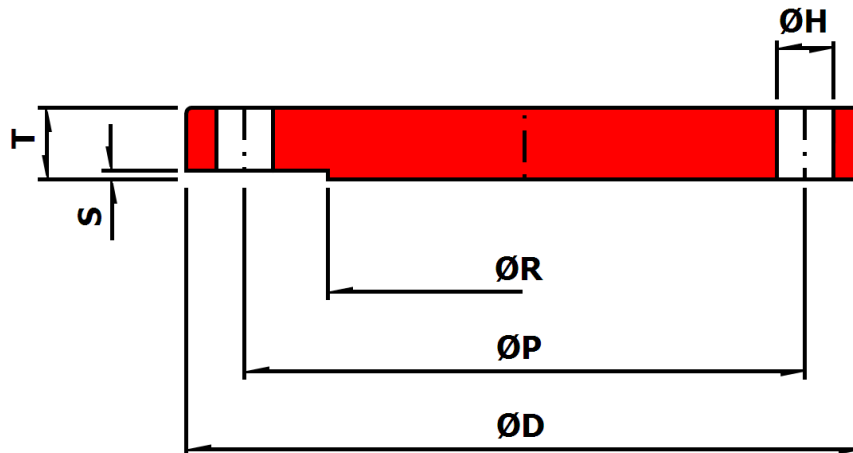
Leechmere Industrial Estate, Grangetown, Sunderland, SR2 9TE, United Kingdom  
Tel: +44 191 521 1941 - Fax: +44 191 523 6954 - E-mail: Info@Mepsun.com - Web: www.Mepsun.com

# Solid Blind Flange

## 150 lb

90/10 CuNi UNS C7060X / C70600

**ANSI B 16.5**



Nominal Size (Inch)	Actual Size (mm)	ØD (mm)	T (mm)	ØR (mm)	S (mm)	Drilling			Weight (Kg)
						ØP (mm)	No. Of Holes	ØH (mm)	
1/2	16	88.9	11.1	34.9	1.6	60.3	4	15.9	0.9
3/4	25	98.4	12.7	42.9	1.6	69.8	4	15.9	1.05
1	30	108	14.3	50.8	1.6	79.4	4	15.9	1.15
1.1/4	38	117.5	15.9	63.5	1.6	88.9	4	15.9	1.5
1.1/2	44.5	127	17.5	73	1.6	98.4	4	15.9	1.6
2	57	152.4	19.1	92.1	1.6	120.6	4	19	2.05
2.1/2	76.1	177.8	22.3	104.8	1.6	139.7	4	19	3.65
3	88.9	190.5	23.8	127	1.6	152.4	4	19	4.55
4	108	228.6	23.8	157.2	1.6	190.5	8	19	9.1
6	159	279.4	25.4	215.9	1.6	241.3	8	22.2	13.7
8	219.1	342.9	28.6	269.9	1.6	298.4	8	22.2	22.8
10	267	406.4	30.2	323.9	1.6	361.9	12	25.4	36.45
12	323.9	482.6	31.8	381	1.6	431.8	12	25.4	57
14	368	533.4	34.9	412.75	1.6	476.2	12	28.6	67.25
16	419	596.9	36.5	482.6	1.6	539.7	16	28.6	87.8
18	457.2	635	39.7	533.4	1.6	577.8	16	31.7	108.3
20	508	698.5	42.9	584.2	1.6	635	20	31.7	140.25
24	610	812.8	47.6	692.1	1.6	749.3	20	34.9	212.05



## Marine Engineering Pipeworks Ltd.

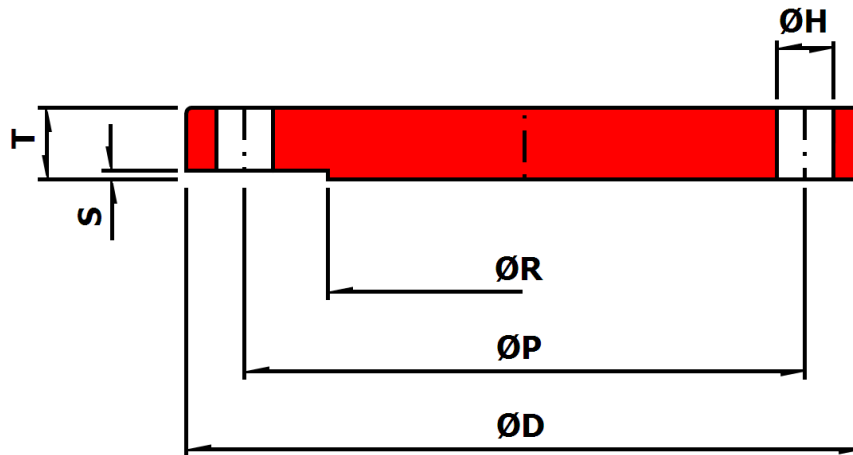
Leechmere Industrial Estate, Grangetown, Sunderland, SR2 9TE, United Kingdom  
 Tel: +44 191 521 1941 - Fax: +44 191 523 6954 - E-mail: Info@Mepsun.com - Web: www.Mepsun.com

# Solid Blind Flange

## 300 lb

90/10 CuNi UNS C7060X / C70600

**ANSI B 16.5**



Nominal Size (Inch)	Actual Size (mm)	ØD (mm)	T (mm)	ØR (mm)	S (mm)	Drilling			Weight (Kg)
						ØP (mm)	No. Of Holes	ØH (mm)	
1/2	<b>16</b>	95.2	14.3	34.9	1.6	66.7	4	15.9	1.15
3/4	<b>25</b>	117.5	15.9	42.9	1.6	82.5	4	19	1.7
1	<b>30</b>	123.8	17.5	50.8	1.6	88.9	4	19	2.3
1.1/4	<b>38</b>	133.3	19	63.5	1.6	98.4	4	19	2.85
1.1/2	<b>44.5</b>	155.6	20.6	73	1.6	114.3	4	22.2	3.4
2	<b>57</b>	165.1	22.2	92.1	1.6	127	8	19	4
2.1/2	<b>76.1</b>	190.5	25.4	104.8	1.6	149.2	8	22.2	6.3
3	<b>88.9</b>	209.5	28.6	127	1.6	168.3	8	22.2	8
4	<b>108</b>	254	31.8	157.2	1.6	200	8	22.2	13.7
6	<b>159</b>	317.5	36.5	215.9	1.6	269.9	12	22.2	26.2
8	<b>219.1</b>	381	41.3	269.9	1.6	330.2	12	25.4	41.6
10	<b>267</b>	444.5	47.6	323.9	1.6	387.3	16	28.6	65.55
12	<b>323.9</b>	520.7	50.8	381	1.6	450.8	16	31.7	94.6
14	<b>368</b>	584.2	54	412.75	1.6	514.3	20	31.7	122
16	<b>419</b>	647.7	57.2	482.6	1.6	571.5	20	34.9	158.45
18	<b>457.2</b>	711.2	60.3	533.4	1.6	628.6	24	34.9	201.8
20	<b>508</b>	774.7	63.5	584.2	1.6	685.8	24	34.9	254.2
24	<b>610</b>	914.4	69.8	692.1	1.6	812.8	24	41.3	389.9



## Marine Engineering Pipeworks Ltd.

Leechmere Industrial Estate, Grangetown, Sunderland, SR2 9TE, United Kingdom  
 Tel: +44 191 521 1941 - Fax: +44 191 523 6954 - E-mail: Info@Mepsun.com - Web: www.Mepsun.com

# Composite Blind Flange

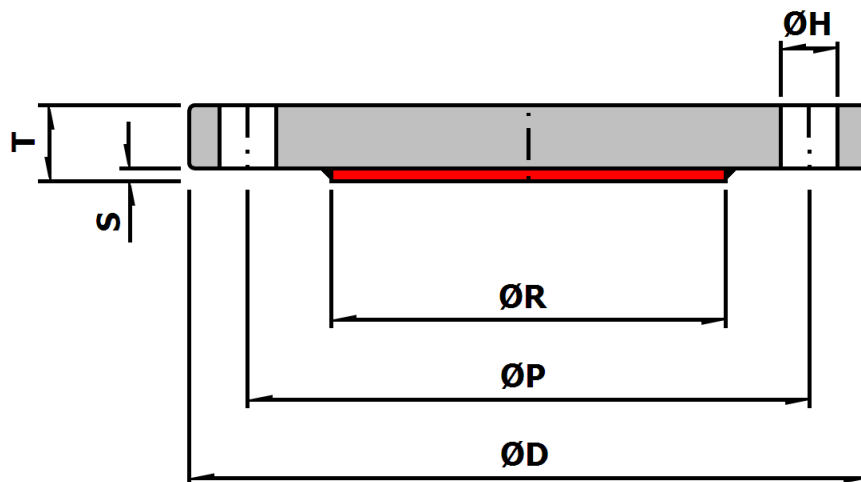
## 150 lb

Galvanized Carbon Steel A105 / A350 LF2

With 90/10 CuNi UNS C7060X / C70600 Overlay

**ANSI B 16.5**

Available Epoxy Coated



Nominal Size (Inch)	Actual Size (mm)	ØD (mm)	T (mm)	ØR (mm)	S (mm)	Drilling			Weight (Kg)
						ØP (mm)	No. Of Holes	ØH (mm)	
1/2	<b>16</b>	88.9	12.5	34.9	3	60.3	4	15.9	0.8
3/4	<b>25</b>	98.4	14.1	42.9	3	69.8	4	15.9	0.9
1	<b>30</b>	108	15.7	50.8	3	79.4	4	15.9	1
1.1/4	<b>38</b>	117.5	17.3	63.5	3	88.9	4	15.9	1.3
1.1/2	<b>44.5</b>	127	20.5	73	3	98.4	4	15.9	1.4
2	<b>57</b>	152.4	22.5	92.1	3	120.6	4	19	1.8
2.1/2	<b>76.1</b>	177.8	23.7	104.8	3	139.7	4	19	3.2
3	<b>88.9</b>	190.5	25.2	127	3	152.4	4	19	4
4	<b>108</b>	228.6	25.2	157.2	3	190.5	8	19	8
6	<b>159</b>	279.4	26.8	215.9	3	241.3	8	22.2	12
8	<b>219.1</b>	342.9	30	269.9	3	298.4	8	22.2	20
10	<b>267</b>	406.4	31.6	323.9	3	361.9	12	25.4	32
12	<b>323.9</b>	482.6	33.2	381	3	431.8	12	25.4	50
14	<b>368</b>	533.4	36.3	412.75	3	476.2	12	28.6	59
16	<b>419</b>	596.9	37.9	482.6	3	539.7	16	28.6	77
18	<b>457.2</b>	635	41.1	533.4	3	577.8	16	31.7	95
20	<b>508</b>	698.5	44.3	584.2	3	635	20	31.7	123
24	<b>610</b>	812.8	49	692.1	3	749.3	20	34.9	186



## Marine Engineering Pipeworks Ltd.

Leechmere Industrial Estate, Grangetown, Sunderland, SR2 9TE, United Kingdom  
 Tel: +44 191 521 1941 - Fax: +44 191 523 6954 - E-mail: Info@Mepsun.com - Web: www.Mepsun.com

# Composite Blind Flange

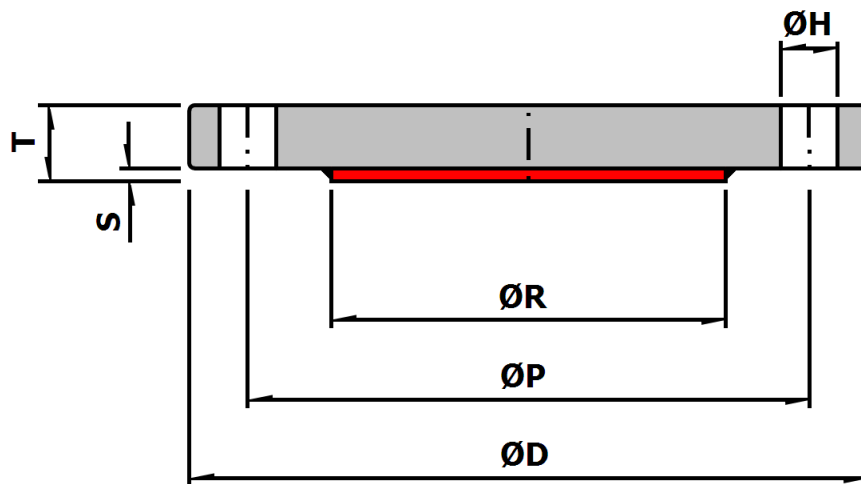
## 300 lb

Galvanized Carbon Steel A105 / A350 LF2

With 90/10 CuNi UNS C7060X / C70600 Overlay

### ANSI B 16.5

Available Epoxy Coated



Nominal Size (Inch)	Actual Size (mm)	ØD (mm)	T (mm)	ØR (mm)	S (mm)	Drilling			Weight (Kg)
						ØP (mm)	No. Of Holes	ØH (mm)	
1/2	16	95.2	15.6	34.9	3	66.7	4	15.9	1
3/4	25	117.5	17.3	42.9	3	82.5	4	19	1.5
1	30	123.8	18.9	50.8	3	88.9	4	19	2
1.1/4	38	133.3	20.4	63.5	3	98.4	4	19	2.5
1.1/2	44.5	155.6	22	73	3	114.3	4	22.2	3
2	57	165.1	23.6	92.1	3	127	8	19	3.5
2.1/2	76.1	190.5	26.8	104.8	3	149.2	8	22.2	5.5
3	88.9	209.5	30	127	3	168.3	8	22.2	7
4	108	254	33.2	157.2	3	200	8	22.2	12
5	133	279.4	36.3	185.7	3	234.9	8	22.2	16
6	159	317.5	37.9	215.9	3	269.9	12	22.2	23
8	219.1	381	42.7	269.9	3	330.2	12	25.4	36.5
10	267	444.5	49	323.9	3	387.3	16	28.6	57.5
12	323.9	520.7	52.2	381	3	450.8	16	31.7	83
14	368	584.2	55.4	412.75	3	514.3	20	31.7	107
16	419	647.7	58.6	482.6	3	571.5	20	34.9	139
18	457.2	711.2	61.7	533.4	3	628.6	24	34.9	177
20	508	774.7	64.9	584.2	3	685.8	24	34.9	223
24	610	914.4	71.2	692.1	3	812.8	24	41.3	342



## Marine Engineering Pipeworks Ltd.

Leechmere Industrial Estate, Grangetown, Sunderland, SR2 9TE, United Kingdom  
 Tel: +44 191 521 1941 - Fax: +44 191 523 6954 - E-mail: Info@Mepsun.com - Web: www.Mepsun.com

# **Butt Weld Fittings**

Manufactured in 90/10 Copper Nickel Alloy UNS C7060X.  
Material and dimensions to EEMUA 234:2015 Chapters 7 & 13  
(Formerly EEMUA 146/1 & 146/7)

<b>90° Elbows</b>	Page 24
<b>45° Elbows</b>	Page 25
<b>End Caps</b>	Page 26
<b>Equal Tees</b>	Page 27
<b>Reducing Tees</b>	Pages 28 - 29
<b>Concentric Reducers</b>	Pages 30 - 31
<b>Eccentric Reducers</b>	Pages 32 - 33
<b>Saddles</b>	Pages 34 - 36



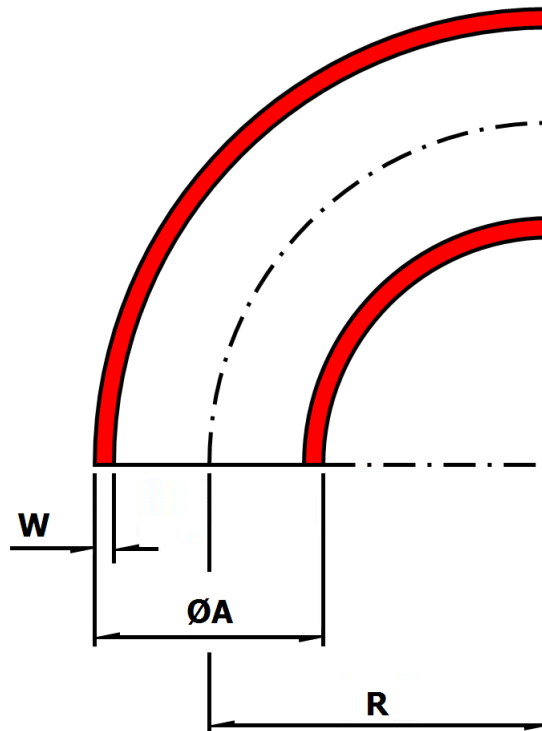
## **Marine Engineering Pipeworks Ltd.**

Leechmere Industrial Estate, Grangetown, Sunderland, SR2 9TE, United Kingdom  
Tel: +44 191 521 1941 - Fax: +44 191 523 6954 - E-mail: [Info@Mepsun.com](mailto:Info@Mepsun.com) - Web: [www.Mepsun.com](http://www.Mepsun.com)

# 90° Long Radius Butt Weld Elbows

90/10 CuNi UNS C7060X

**EEMUA 234:2015 Chapter 7**  
**(Formerly EEMUA 146/1)**



Nominal Size (Inch)	ØA (mm)	R (mm)	16 Bar		20 Bar	
			W (mm)	Weight (Kg)	W (mm)	Weight (Kg)
<b>Seamless</b>						
3/4	<b>25</b>	27.5	2	0.06	2	0.06
1	<b>30</b>	38	2.5	0.12	2.5	0.12
1.1/4	<b>38</b>	48	2.5	0.18	2.5	0.18
1.1/2	<b>44.5</b>	57	2.5	0.26	2.5	0.26
2	<b>57</b>	76	2.5	0.46	2.5	0.46
2.1/2	<b>76.1</b>	95	2.5	0.76	2.5	0.76
3	<b>88.9</b>	114	2.5	1.08	2.5	1.08
4	<b>108</b>	152	3	2.1	3	2.1
6	<b>159</b>	229	3	4.7	3.5	5.48
<b>Seamless or Seam Welded</b>						
8	<b>219.1</b>	305	4	11.5	4.5	12.94
10	<b>267</b>	381	4.5	19.7	5.5	24.08
12	<b>323.9</b>	457	5.5	35.06	7	44.6
<b>Seam Welded</b>						
14	<b>368</b>	533	6.5	54.92	8	67.6
16	<b>419</b>	610	7	77	9	99
18	<b>457.2</b>	686	8	108.2	9.5	128.5
20	<b>508</b>	762	8.5	141.86	11	183.6
24	<b>610</b>	914	10.5	252.94	13	313.3
28	<b>711</b>	1067	12	392.6	15	490.8
32	<b>813</b>	1219	13.5	577.9	17	727.7
36	<b>914</b>	1372	15.5	837.2	19	1026.26



## Marine Engineering Pipeworks Ltd.

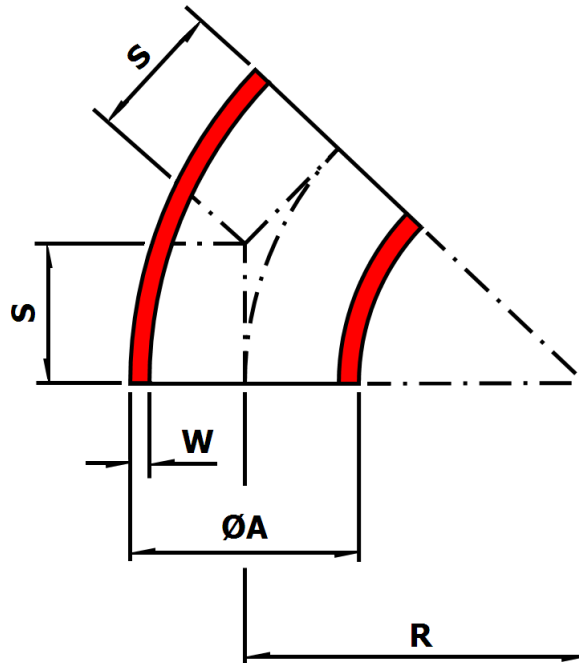
Leechmere Industrial Estate, Grangetown, Sunderland, SR2 9TE, United Kingdom  
 Tel: +44 191 521 1941 - Fax: +44 191 523 6954 - E-mail: Info@Mepsun.com - Web: www.Mepsun.com



# 45° Long Radius Butt Weld Elbows

90/10 CuNi UNS C7060X

**EEMUA 234:2015 Chapter 7**  
**(Formerly EEMUA 146/1)**



Nominal Size (Inch)	ØA (mm)	R (mm)	S (mm)	16 Bar		20 Bar	
				W (mm)	Weight (Kg)	W (mm)	Weight (Kg)
<b>Seamless</b>							
3/4	<b>25</b>	27.5	11.4	2	0.03	2	0.03
1	<b>30</b>	38	22	2.5	0.06	2.5	0.06
1.1/4	<b>38</b>	48	25	2.5	0.09	2.5	0.09
1.1/2	<b>44.5</b>	57	29	2.5	0.13	2.5	0.13
2	<b>57</b>	76	35	2.5	0.23	2.5	0.23
2.1/2	<b>76.1</b>	95	44	2.5	0.38	2.5	0.38
3	<b>88.9</b>	114	51	2.5	0.54	2.5	0.54
4	<b>108</b>	152	64	3	1.05	3	1.05
6	<b>159</b>	229	95	3	2.35	3.5	2.74
<b>Seamless or Seam Welded</b>							
8	<b>219.1</b>	305	127	4	5.75	4.5	6.47
10	<b>267</b>	381	159	4.5	9.85	5.5	12.04
12	<b>323.9</b>	457	190	5.5	17.53	7	22.3
<b>Seam Welded</b>							
14	<b>368</b>	533	222	6.5	27.46	8	33.8
16	<b>419</b>	610	254	7	38.5	9	49.5
18	<b>457.2</b>	686	286	8	54.1	9.5	64.25
20	<b>508</b>	762	318	8.5	70.93	11	91.8
24	<b>610</b>	914	381	10.5	126.42	13	156.6
28	<b>711</b>	1067	438	12	196.3	15	245.4
32	<b>813</b>	1219	502	13.5	288	17	363.85
36	<b>914</b>	1372	565	15.5	418.6	19	513.13



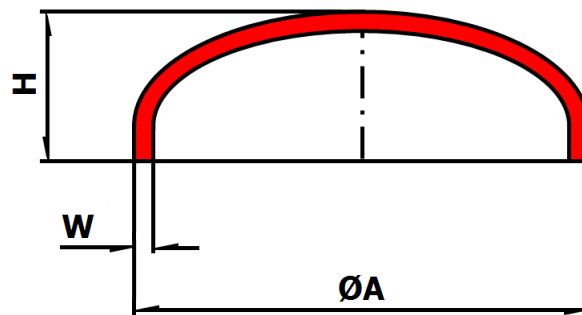
## Marine Engineering Pipeworks Ltd.

Leechmere Industrial Estate, Grangetown, Sunderland, SR2 9TE, United Kingdom  
 Tel: +44 191 521 1941 - Fax: +44 191 523 6954 - E-mail: Info@Mepsun.com - Web: www.Mepsun.com

# Butt Weld End Caps

90/10 CuNi UNS C7060X

**EEMUA 234:2015 Chapter 7**  
**(Formerly EEMUA 146/1)**



Nominal Size (Inch)	ØA (mm)	H (mm)	16 Bar		20 Bar	
			W (mm)	Weight (Kg)	W (mm)	Weight (Kg)
3/4	25	22	2	0.07	2	0.07
1	30	22	2.5	0.08	2.5	0.08
1.1/4	38	22	2.5	0.10	2.5	0.10
1.1/2	44.5	19.6	2.5	0.13	2.5	0.13
2	57	22	2.5	0.19	2.5	0.19
2.1/2	76.1	25.7	2.5	0.31	2.5	0.31
3	88.9	28.2	2.5	0.4	2.5	0.4
4	108	31.7	3	0.75	3	0.75
6	159	41	3	1.5	3.5	1.75
8	219.1	55	4	2.75	4.5	3.1
10	267	69	4.5	4.9	5.5	5.96
12	323.9	80	5.5	9.17	7	11.68
14	368	93	6.5	14.05	8	17.3
16	419	102	7	18.6	9	23.9
18	457.2	119	8	22.75	9.5	27
20	508	129	8.5	31.7	11	41
24	610	148	10.5	55.16	13	68.3
28	711	176	12	85.55	15	106.9
32	813	200	13.5	125.4	17	157.9
36	914	221	15.5	175.4	19	215



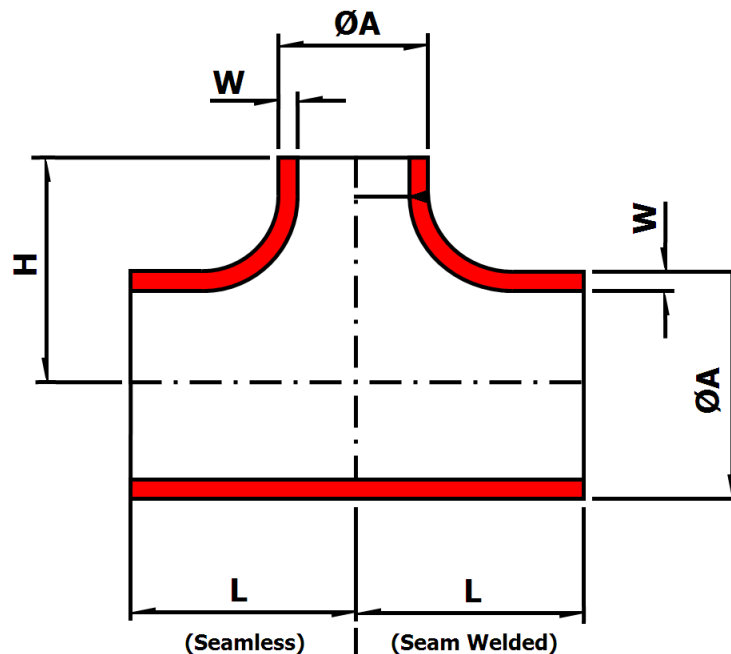
## Marine Engineering Pipeworks Ltd.

Leechmere Industrial Estate, Grangetown, Sunderland, SR2 9TE, United Kingdom  
 Tel: +44 191 521 1941 - Fax: +44 191 523 6954 - E-mail: Info@Mepsun.com - Web: www.Mepsun.com

# Butt Weld Equal Tee

90/10 CuNi UNS C7060X

**EEMUA 234:2015 Chapter 7**  
**(Formerly EEMUA 146/1)**



Nominal Size (Inch)	ØA (mm)	L (mm)	H (mm)	16 Bar		20 Bar	
				W (mm)	Weight (Kg)	W (mm)	Weight (Kg)
<b>Seamless</b>							
1	<b>30</b>	38	38	2.5	0.18	2.5	0.18
1.1/4	<b>38</b>	48	48	2.5	0.29	2.5	0.29
1.1/2	<b>44.5</b>	57	57	2.5	0.43	2.5	0.43
2	<b>57</b>	64	64	2.5	0.57	2.5	0.57
2.1/2	<b>76.1</b>	76	76	2.5	0.88	2.5	0.88
3	<b>88.9</b>	86	86	2.5	1.16	2.5	1.16
4	<b>108</b>	105	105	3	2.09	3	2.09
6	<b>159</b>	143	143	3	4.07	3.5	4.74
8	<b>219.1</b>	178	178	4	17	4.5	19.1
<b>Seam Welded</b>							
10	<b>267</b>	216	216	4.5	24.9	5.5	30.4
12	<b>323.9</b>	254	254	5.5	43.3	7	55.1
14	<b>368</b>	279	279	6.5	64.05	8	78.8
16	<b>419</b>	305	305	7	96.4	9	124
18	<b>457.2</b>	343	343	8	135.3	9.5	160.7
20	<b>508</b>	381	381	8.5	175.3	11	226.9
24	<b>610</b>	432	432	10.5	265.9	13	329.2
28	<b>711</b>	521	521	12	427	15	533.8
32	<b>813</b>	597	597	13.5	546.1	17	687.7
36	<b>914</b>	673	673	15.5	794.1	19	973.4



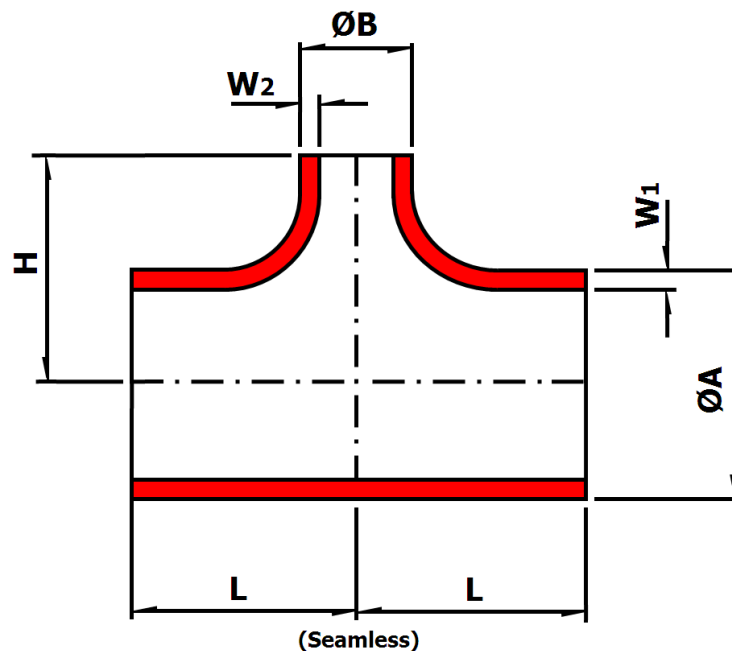
## Marine Engineering Pipeworks Ltd.

Leechmere Industrial Estate, Grangetown, Sunderland, SR2 9TE, United Kingdom  
 Tel: +44 191 521 1941 - Fax: +44 191 523 6954 - E-mail: Info@Mepsun.com - Web: www.Mepsun.com

# Butt Weld Reducing Tee

90/10 CuNi UNS C7060X

**EEMUA 234:2015 Chapter 7**  
**(Formerly EEMUA 146/1)**



Nominal Size (Inch)	ØA (Inch)	ØB (mm)	L (mm)	H (mm)	16 Bar			20 Bar		
					W1 (mm)	W2 (mm)	Weight (Kg)	W1 (mm)	W2 (mm)	Weight (Kg)
<b>Seamless</b>										
1 x 3/4	<b>30</b>	<b>x 25</b>	38	38	2.5	2	0.17	2.5	2	0.17
1.1/4 x 3/4	<b>38</b>	<b>x 25</b>	48	48	2.5	2	0.28	2.5	2	0.28
1.1/4 x 1	<b>38</b>	<b>x 30</b>	48	48	2.5	2.5	0.28	2.5	2.5	0.28
1.1/2 x 3/4	<b>44.5</b>	<b>x 25</b>	57	57	2.5	2	0.37	2.5	2	0.37
1.1/2 x 1	<b>44.5</b>	<b>x 30</b>	57	57	2.5	2.5	0.4	2.5	2.5	0.4
1.1/2 x 1.1/4	<b>44.5</b>	<b>x 38</b>	57	57	2.5	2.5	0.41	2.5	2.5	0.41
2 x 1	<b>57</b>	<b>x 30</b>	64	51	2.5	2.5	0.51	2.5	2.5	0.51
2 x 1.1/4	<b>57</b>	<b>x 38</b>	64	57	2.5	2.5	0.54	2.5	2.5	0.54
2 x 1.1/2	<b>57</b>	<b>x 44.5</b>	64	60	2.5	2.5	0.55	2.5	2.5	0.55
2.1/2 x 1.1/4	<b>76.1</b>	<b>x 38</b>	76	64	2.5	2.5	0.83	2.5	2.5	0.83
2.1/2 x 1.1/2	<b>76.1</b>	<b>x 44.5</b>	76	67	2.5	2.5	0.84	2.5	2.5	0.84
2.1/2 x 2	<b>76.1</b>	<b>x 57</b>	76	70	2.5	2.5	0.85	2.5	2.5	0.85
3 x 1.1/2	<b>88.9</b>	<b>x 44.5</b>	86	73	2.5	2.5	1.1	2.5	2.5	1.1
3 x 2	<b>88.9</b>	<b>x 57</b>	86	76	2.5	2.5	1.12	2.5	2.5	1.12
3 x 2.1/2	<b>88.9</b>	<b>x 76.1</b>	86	83	2.5	2.5	1.15	2.5	2.5	1.15
4 x 2	<b>108</b>	<b>x 57</b>	105	89	3	2.5	1.9	3	2.5	1.9
4 x 2.1/2	<b>108</b>	<b>x 76.1</b>	105	95	3	2.5	1.92	3	2.5	1.92
4 x 3	<b>108</b>	<b>x 88.9</b>	105	98	3	2.5	1.95	3	2.5	1.95
6 x 2.1/2	<b>159</b>	<b>x 76.1</b>	143	121	3	2.5	3.95	3.5	2.5	4.6
6 x 3	<b>159</b>	<b>x 88.9</b>	143	124	3	2.5	4	3.5	2.5	4.65
6 x 4	<b>159</b>	<b>x 108</b>	143	130	3	3	4.05	3.5	3	4.72
8 x 3	<b>219.1</b>	<b>x 88.9</b>	178	152	4	2.5	16.6	4.5	2.5	18.7
8 x 4	<b>219.1</b>	<b>x 108</b>	178	156	4	3	16.9	4.5	3	19
8 x 6	<b>219.1</b>	<b>x 159</b>	178	168	4	3	17	4.5	3.5	19.1



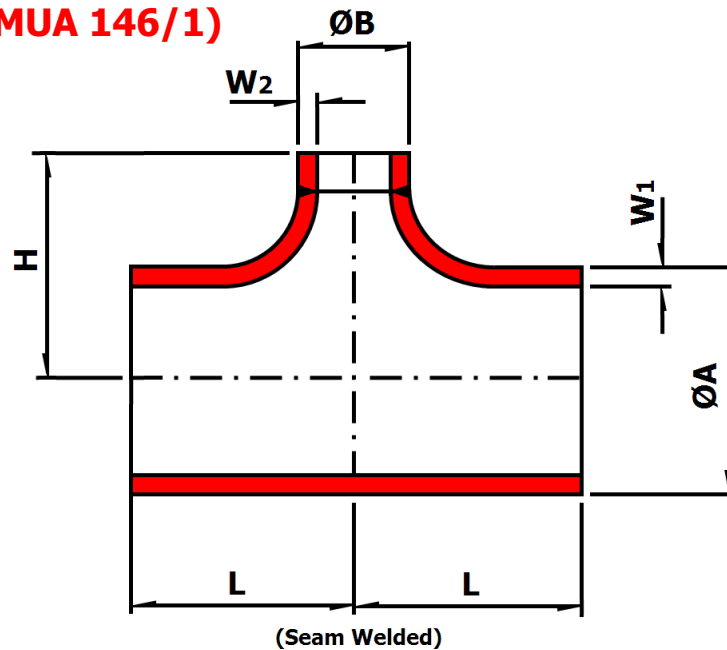
## Marine Engineering Pipeworks Ltd.

Leechmere Industrial Estate, Grangetown, Sunderland, SR2 9TE, United Kingdom  
 Tel: +44 191 521 1941 - Fax: +44 191 523 6954 - E-mail: Info@Mepsun.com - Web: www.Mepsun.com

# Butt Weld Reducing Tee

90/10 CuNi UNS C7060X

**EEMUA 234:2015 Chapter 7**  
**(Formerly EEMUA 146/1)**



Nominal Size (Inch) (Inch)	ØA (mm)	ØB (mm)	L (mm)	H (mm)	16 Bar			20 Bar		
					W1 (mm)	W2 (mm)	Weight (Kg)	W1 (mm)	W2 (mm)	Weight (Kg)
<b>Seam Welded</b>										
10 x 4	<b>267</b>	<b>x 108</b>	216	184	4.5	3	21.6	5.5	3	26.4
10 x 6	<b>267</b>	<b>x 159</b>	216	194	4.5	3	21.8	5.5	3.5	26.6
10 x 8	<b>267</b>	<b>x 219.1</b>	216	203	4.5	4	21.9	5.5	4.5	26.8
12 x 6	<b>323.9</b>	<b>x 159</b>	254	219	5.5	3	38.5	7	3.5	49
12 x 8	<b>323.9</b>	<b>x 219.1</b>	254	229	5.5	4	39.6	7	4.5	50.4
12 x 10	<b>323.9</b>	<b>x 267</b>	254	241	5.5	4.5	40.7	7	5.5	51.8
14 x 8	<b>368</b>	<b>x 219.1</b>	279	248	6.5	4	58.8	8	4.5	72.4
14 x 10	<b>368</b>	<b>x 267</b>	279	257	6.5	4.5	59.7	8	5.5	73.5
14 x 12	<b>368</b>	<b>x 323.9</b>	279	270	6.5	5.5	61.5	8	7	75.7
16 x 10	<b>419</b>	<b>x 267</b>	305	283	7	4.5	89.6	9	5.5	115.2
16 x 12	<b>419</b>	<b>x 323.9</b>	305	295	7	5.5	91.4	9	7	117.5
16 x 14	<b>419</b>	<b>x 368</b>	305	305	7	6.5	93.5	9	8	120.2
18 x 12	<b>457.2</b>	<b>x 323.9</b>	343	321	8	5.5	126.3	9.5	7	150
18 x 14	<b>457.2</b>	<b>x 368</b>	343	330	8	6.5	128.3	9.5	8	152.4
18 x 16	<b>457.2</b>	<b>x 419</b>	343	330	8	7	129.9	9.5	9	154.3
20 x 14	<b>508</b>	<b>x 368</b>	381	356	8.5	6.5	162	11	8	209.7
20 x 16	<b>508</b>	<b>x 419</b>	381	356	8.5	7	164.2	11	9	212.5
20 x 18	<b>508</b>	<b>x 457.2</b>	381	368	8.5	8	168.3	11	9.5	217.8
24 x 16	<b>610</b>	<b>x 419</b>	432	406	10.5	7	248.3	13	9	307.4
24 x 18	<b>610</b>	<b>x 457.2</b>	432	419	10.5	8	251.7	13	9.5	311.6
24 x 20	<b>610</b>	<b>x 508</b>	432	432	10.5	8.5	255.3	13	11	316.1
28 x 18	<b>711</b>	<b>x 457.2</b>	521	470	12	8	394.6	15	9.5	493.4
28 x 20	<b>711</b>	<b>x 508</b>	521	483	12	8.5	398.2	15	11	497.8
28 x 24	<b>711</b>	<b>x 610</b>	521	508	12	10.5	409.9	15	13	512.4
32 x 20	<b>813</b>	<b>x 508</b>	597	533	13.5	8.5	495	17	11	623.3
32 x 24	<b>813</b>	<b>x 610</b>	597	559	13.5	10.5	506.8	17	13	638.2
32 x 28	<b>813</b>	<b>x 711</b>	597	572	13.5	12	518.8	17	15	653.3
36 x 24	<b>914</b>	<b>x 610</b>	673	610	15.5	10.5	723.6	19	13	887
36 x 28	<b>914</b>	<b>x 711</b>	673	622	15.5	12	735.4	19	15	901.5
36 x 32	<b>914</b>	<b>x 813</b>	673	648	15.5	13.5	754.4	19	17	924.8



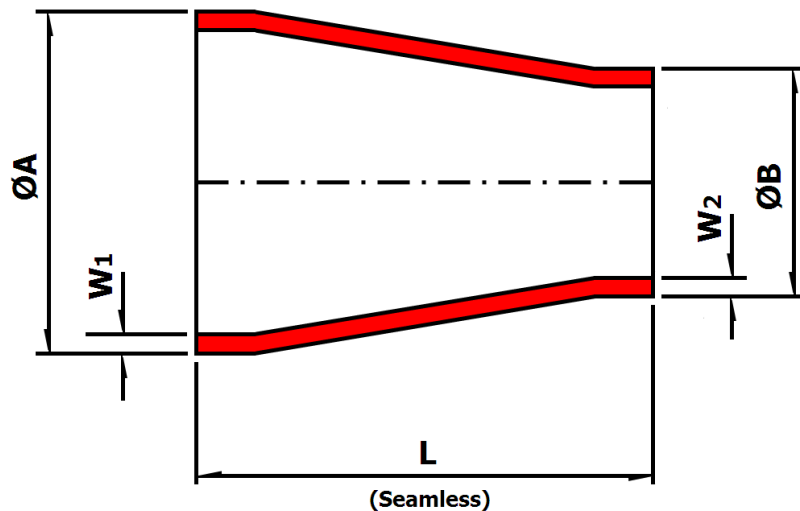
## Marine Engineering Pipeworks Ltd.

Leechmere Industrial Estate, Grangetown, Sunderland, SR2 9TE, United Kingdom  
Tel: +44 191 521 1941 - Fax: +44 191 523 6954 - E-mail: Info@Mepsun.com - Web: www.Mepsun.com

# Butt Weld Concentric Reducer

90/10 CuNi UNS C7060X

**EEMUA 234:2015 Chapter 7**  
**(Formerly EEMUA 146/1)**



				16 Bar			20 Bar			
Nominal Size (Inch)		ØA (mm)	ØB (mm)	L (mm)	W1 (mm)	W2 (mm)	Weight (Kg)	W1 (mm)	W2 (mm)	Weight (Kg)
<b>Seamless</b>										
3/4	X 1/2	25	X 16	51	2	2	0.09	2	2	0.09
1	x 3/4	30	x 25	51	2.5	2	0.09	2.5	2	0.09
1.1/4	x 3/4	38	x 25	51	2.5	2	0.1	2.5	2	0.1
1.1/4	x 1	38	x 30	51	2.5	2.5	0.11	2.5	2.5	0.11
1.1/2	x 3/4	44.5	x 25	64	2.5	2	0.14	2.5	2	0.14
1.1/2	x 1	44.5	x 30	64	2.5	2.5	0.15	2.5	2.5	0.15
1.1/2	x 1.1/4	44.5	x 38	64	2.5	2.5	0.17	2.5	2.5	0.17
2	x 1	57	x 30	76	2.5	2.5	0.21	2.5	2.5	0.21
2	x 1.1/4	57	x 38	76	2.5	2.5	0.23	2.5	2.5	0.23
2	x 1.1/2	57	x 44.5	76	2.5	2.5	0.25	2.5	2.5	0.25
2.1/2	x 1.1/4	76.1	x 38	89	2.5	2.5	0.34	2.5	2.5	0.34
2.1/2	x 1.1/2	76.1	x 44.5	89	2.5	2.5	0.36	2.5	2.5	0.36
2.1/2	x 2	76.1	x 57	89	2.5	2.5	0.4	2.5	2.5	0.4
3	x 1.1/2	88.9	x 44.5	89	2.5	2.5	0.4	2.5	2.5	0.4
3	x 2	88.9	x 57	89	2.5	2.5	0.44	2.5	2.5	0.44
3	x 2.1/2	88.9	x 76.1	89	2.5	2.5	0.5	2.5	2.5	0.5
4	x 2	108	x 57	102	3	2.5	0.68	3	2.5	0.68
4	x 2.1/2	108	x 76.1	102	3	2.5	0.76	3	2.5	0.76
4	x 3	108	x 88.9	102	3	2.5	0.82	3	2.5	0.82
6	x 2	159	x 57	140	3	2.5	1.3	3.5	2.5	1.5
6	x 2.1/2	159	x 76.1	140	3	2.5	1.35	3.5	2.5	1.56
6	x 3	159	x 88.9	140	3	2.5	1.42	3.5	2.5	1.65
6	x 4	159	x 108	140	3	3	1.54	3.5	3	1.78
<b>Seamless or Seam Welded</b>										
8	x 2.1/2	219.1	x 76.1	152	4	2.5	2.45	4.5	2.5	2.74
8	x 3	219.1	x 88.9	152	4	2.5	2.55	4.5	2.5	2.87
8	x 4	219.1	x 108	152	4	3	2.72	4.5	3	3.05
8	x 6	219.1	x 159	152	4	3	3.16	4.5	3.5	3.54
10	x 4	267	x 108	178	4.5	3	4.11	5.5	3	5
10	x 6	267	x 159	178	4.5	3	4.69	5.5	3.5	5.7
10	x 8	267	x 219.1	178	4.5	4	5.36	5.5	4.5	6.53



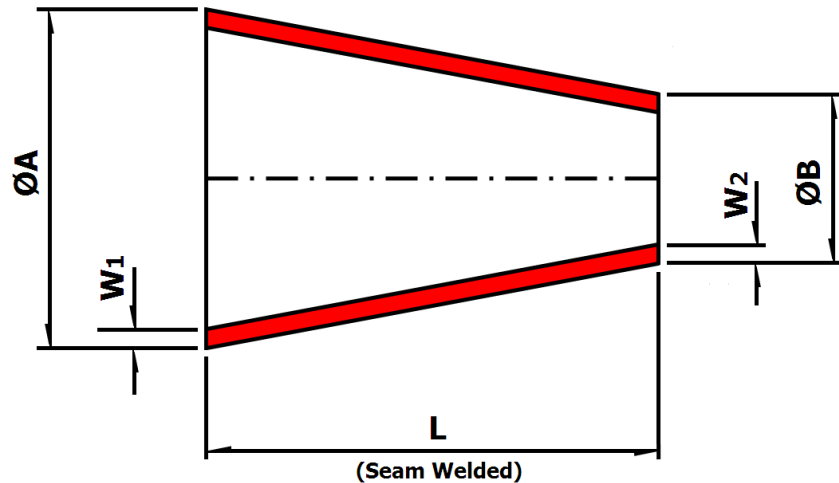
## Marine Engineering Pipeworks Ltd.

Leechmere Industrial Estate, Grangetown, Sunderland, SR2 9TE, United Kingdom  
Tel: +44 191 521 1941 - Fax: +44 191 523 6954 - E-mail: Info@Mepsun.com - Web: www.Mepsun.com

# Butt Weld Concentric Reducer

90/10 CuNi UNS C7060X

**EEMUA 234:2015 Chapter 7**  
**(Formerly EEMUA 146/1)**



				16 Bar			20 Bar			
Nominal Size (Inch)	(Inch)	ØA (mm)	ØB (mm)	L (mm)	W1 (mm)	W2 (mm)	Weight (Kg)	W1 (mm)	W2 (mm)	Weight (Kg)
<b>Seamless or Seam Welded</b>										
12	x 6	323.9	x 159	203	5.5	3	7.39	7	3.5	9.35
12	x 8	323.9	x 219.1	203	5.5	4	8.33	7	4.5	10.55
12	x 10	323.9	x 267	203	5.5	4.5	9.09	7	5.5	11.52
14	x 8	368	x 219.1	330	6.5	4	17.28	8	4.5	21.16
14	x 10	368	x 267	330	6.5	4.5	18.73	8	5.5	22.95
14	x 12	368	x 323.9	330	6.5	5.5	20.44	8	7	25.06
16	x 10	419	x 267	356	7	4.5	23.51	9	5.5	30.05
16	x 12	419	x 323.9	356	7	5.5	25.51	9	7	32.62
16	x 14	419	x 368	356	7	6.5	27.04	9	8	34.6
<b>Seam Welded</b>										
18	x 12	457.2	x 323.9	381	8	5.5	32.72	9.5	7	38.85
18	x 14	457.2	x 368	381	8	6.5	34.61	9.5	8	41.1
18	x 16	457.2	x 419	381	8	7	36.8	9.5	9	43.7
20	x 14	508	x 368	508	8.5	6.5	52.07	11	8	67.38
20	x 16	508	x 419	508	8.5	7	55.17	11	9	71.39
20	x 18	508	x 457.2	508	8.5	8	57.48	11	9.5	74.38
24	x 16	610	x 419	508	10.5	7	75.49	13	9	93.46
24	x 18	610	x 457.2	508	10.5	8	78.34	13	9.5	96.99
24	x 20	610	x 508	508	10.5	8.5	82.15	13	11	101.7
28	x 18	711	x 457.2	610	12	8	117.58	15	9.5	146.97
28	x 20	711	x 508	610	12	8.5	122.82	15	11	153.52
28	x 24	711	x 610	610	12	10.5	133.3	15	13	166.62
32	x 24	813	x 610	610	13.5	10.5	161.42	17	13	203.26
32	x 28	813	x 711	610	13.5	12	173.09	17	15	217.96
36	x 24	914	x 610	610	15.5	10.5	274.48	19	13	336.45
36	x 28	914	x 711	610	15.5	12	287.89	19	15	352.89
36	x 32	914	x 813	610	15.5	13.5	301.43	19	17	369.49



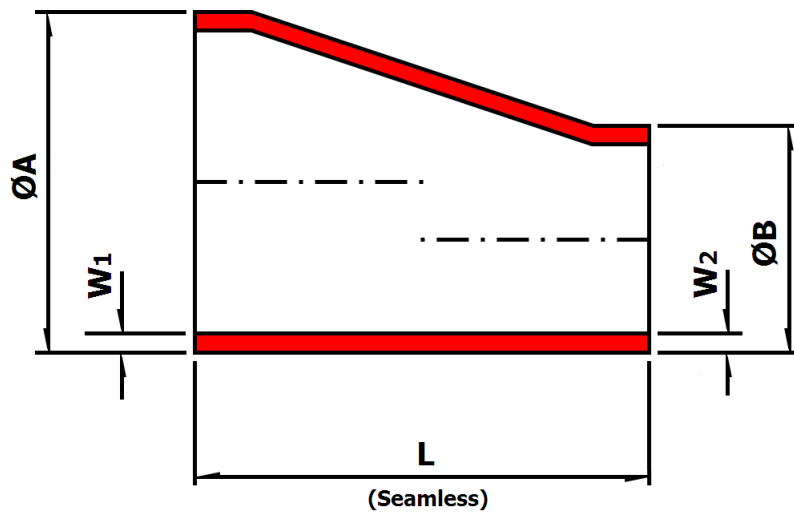
## Marine Engineering Pipeworks Ltd.

Leechmere Industrial Estate, Grangetown, Sunderland, SR2 9TE, United Kingdom  
Tel: +44 191 521 1941 - Fax: +44 191 523 6954 - E-mail: Info@Mepsun.com - Web: www.Mepsun.com

# Butt Weld Eccentric Reducer

90/10 CuNi UNS C7060X

**EEMUA 234:2015 Chapter 7**  
**(Formerly EEMUA 146/1)**



				16 Bar			20 Bar			
Nominal Size (Inch)	(Inch)	ØA (mm)	ØB (mm)	L (mm)	W1 (mm)	W2 (mm)	Weight (Kg)	W1 (mm)	W2 (mm)	Weight (Kg)
<b>Seamless</b>										
1	x 3/4	30	x 25	51	2.5	2	0.09	2.5	2	0.09
1.1/4	x 3/4	38	x 25	51	2.5	2	0.1	2.5	2	0.1
1.1/4	x 1	38	x 30	51	2.5	2.5	0.11	2.5	2.5	0.11
1.1/2	x 3/4	44.5	x 25	64	2.5	2	0.14	2.5	2	0.14
1.1/2	x 1	44.5	x 30	64	2.5	2.5	0.15	2.5	2.5	0.15
1.1/2	x 1.1/4	44.5	x 38	64	2.5	2.5	0.17	2.5	2.5	0.17
2	x 1	57	x 30	76	2.5	2.5	0.21	2.5	2.5	0.21
2	x 1.1/4	57	x 38	76	2.5	2.5	0.23	2.5	2.5	0.23
2	x 1.1/2	57	x 44.5	76	2.5	2.5	0.25	2.5	2.5	0.25
2.1/2	x 1.1/4	76.1	x 38	89	2.5	2.5	0.34	2.5	2.5	0.34
2.1/2	x 1.1/2	76.1	x 44.5	89	2.5	2.5	0.36	2.5	2.5	0.36
2.1/2	x 2	76.1	x 57	89	2.5	2.5	0.4	2.5	2.5	0.4
3	x 1.1/2	88.9	x 44.5	89	2.5	2.5	0.4	2.5	2.5	0.4
3	x 2	88.9	x 57	89	2.5	2.5	0.44	2.5	2.5	0.44
3	x 2.1/2	88.9	x 76.1	89	2.5	2.5	0.5	2.5	2.5	0.5
4	x 2	108	x 57	102	3	2.5	0.68	3	2.5	0.68
4	x 2.1/2	108	x 76.1	102	3	2.5	0.76	3	2.5	0.76
4	x 3	108	x 88.9	102	3	2.5	0.82	3	2.5	0.82
6	x 2	159	x 57	140	3	2.5	1.3	3.5	2.5	1.5
6	x 2.1/2	159	x 76.1	140	3	2.5	1.35	3.5	2.5	1.56
6	x 3	159	x 88.9	140	3	2.5	1.42	3.5	2.5	1.65
6	x 4	159	x 108	140	3	3	1.54	3.5	3	1.78
<b>Seamless or Seam Welded</b>										
8	x 2.1/2	219.1	x 76.1	152	4	2.5	2.45	4.5	2.5	2.74
8	x 3	219.1	x 88.9	152	4	2.5	2.55	4.5	2.5	2.87
8	x 4	219.1	x 108	152	4	3	2.72	4.5	3	3.05
8	x 6	219.1	x 159	152	4	3	3.16	4.5	3.5	3.54
10	x 4	267	x 108	178	4.5	3	4.11	5.5	3	5
10	x 6	267	x 159	178	4.5	3	4.69	5.5	3.5	5.7
10	x 8	267	x 219.1	178	4.5	4	5.36	5.5	4.5	6.53



## Marine Engineering Pipeworks Ltd.

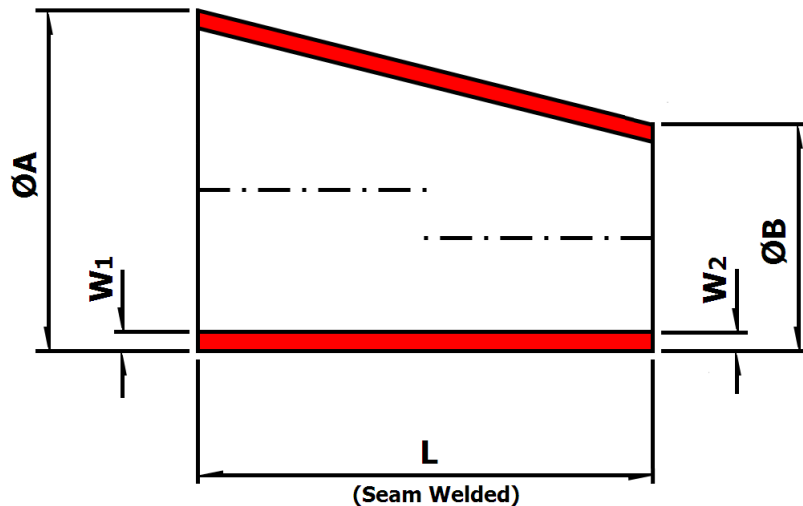
Leechmere Industrial Estate, Grangetown, Sunderland, SR2 9TE, United Kingdom  
Tel: +44 191 521 1941 - Fax: +44 191 523 6954 - E-mail: Info@Mepsun.com - Web: www.Mepsun.com



# Butt Weld Eccentric Reducer

90/10 CuNi UNS C7060X

**EEMUA 234:2015 Chapter 7**  
**(Formerly EEMUA 146/1)**



				16 Bar			20 Bar			
Nominal Size (Inch)	(Inch)	ØA (mm)	ØB (mm)	L (mm)	W1 (mm)	W2 (mm)	Weight (Kg)	W1 (mm)	W2 (mm)	Weight (Kg)
<b>Seamless or Seam Welded</b>										
12	x 6	323.9	x 159	203	5.5	3	7.39	7	3.5	9.35
12	x 8	323.9	x 219.1	203	5.5	4	8.33	7	4.5	10.55
12	x 10	323.9	x 267	203	5.5	4.5	9.09	7	5.5	11.52
14	x 8	368	x 219.1	330	6.5	4	17.28	8	4.5	21.16
14	x 10	368	x 267	330	6.5	4.5	18.73	8	5.5	22.95
14	x 12	368	x 323.9	330	6.5	5.5	20.44	8	7	25.06
16	x 10	419	x 267	356	7	4.5	23.51	9	5.5	30.05
16	x 12	419	x 323.9	356	7	5.5	25.51	9	7	32.62
16	x 14	419	x 368	356	7	6.5	27.04	9	8	35.6
<b>Seam Welded</b>										
18	x 12	457.2	x 323.9	381	8	5.5	32.72	9.5	7	38.85
18	x 14	457.2	x 368	381	8	6.5	34.61	9.5	8	41.1
18	x 16	457.2	x 419	381	8	7	36.8	9.5	9	43.7
20	x 14	508	x 368	508	8.5	6.5	52.07	11	8	67.38
20	x 16	508	x 419	508	8.5	7	55.17	11	9	71.39
20	x 18	508	x 457.2	508	8.5	8	57.48	11	9.5	74.38
24	x 16	610	x 419	508	10.5	7	75.49	13	9	93.46
24	x 18	610	x 457.2	508	10.5	8	78.34	13	9.5	96.99
24	x 20	610	x 508	508	10.5	8.5	82.15	13	11	101.7
28	x 18	711	x 457.2	610	12	8	117.58	15	9.5	146.97
28	x 20	711	x 508	610	12	8.5	122.82	15	11	153.52
28	x 24	711	x 610	610	12	10.5	133.3	15	13	166.62
32	x 24	813	x 610	610	13.5	10.5	161.42	17	13	203.26
32	x 28	813	x 711	610	13.5	12	173.09	17	15	217.96
36	x 24	914	x 610	610	15.5	10.5	274.48	19	13	336.45
36	x 28	914	x 711	610	15.5	12	287.89	19	15	352.89
36	x 32	914	x 813	610	15.5	13.5	301.43	19	17	369.49



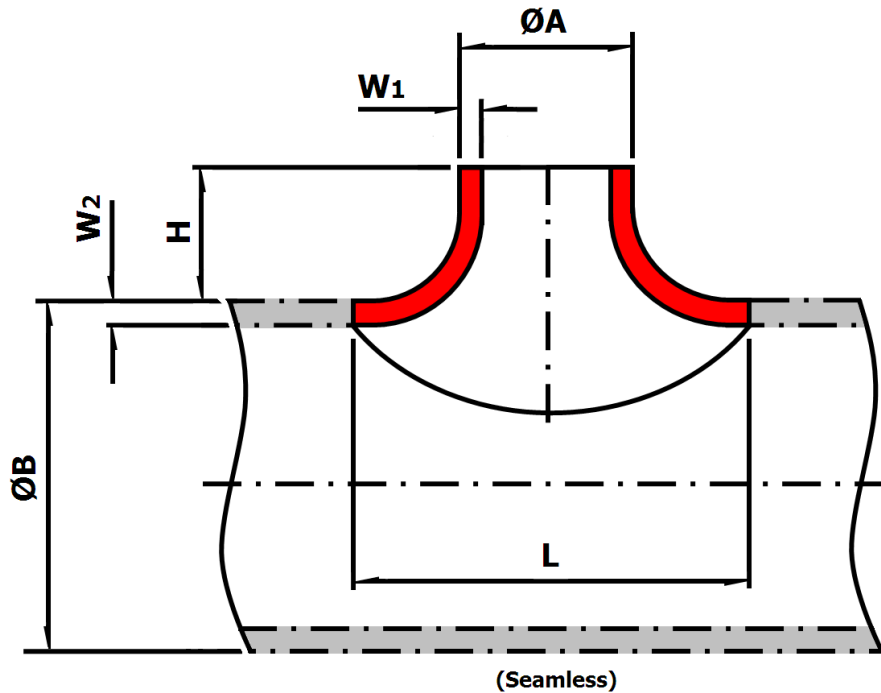
## Marine Engineering Pipeworks Ltd.

Leechmere Industrial Estate, Grangetown, Sunderland, SR2 9TE, United Kingdom  
Tel: +44 191 521 1941 - Fax: +44 191 523 6954 - E-mail: Info@Mepsun.com - Web: www.Mepsun.com

# Butt Weld Saddles (Seamless)

90/10 CuNi UNS C7060X

**EEMUA 234:2015 Chapter 13**  
**(Formerly EEMUA 146/7)**



Nominal Size Inch x Inch	ØA mm	x	ØB mm	H mm	L mm	16 Bar			20 Bar		
						W1 mm	W2 mm	Weight Kg	W1 mm	W2 mm	Weight Kg
<b>Seamless</b>											
1.1/4 x 1.1/4	<b>38</b>	<b>x</b>	<b>38</b>	35	64	2.5	2.5	0.18	2.5	2.5	0.18
1.1/4 x 1.1/2	<b>38</b>	<b>x</b>	<b>44.5</b>	35	64	2.5	2.5	0.23	2.5	2.5	0.23
1.1/4 x 2	<b>38</b>	<b>x</b>	<b>57</b>	35	64	2.5	2.5	0.25	2.5	2.5	0.25
1.1/4 x 2.1/2	<b>38</b>	<b>x</b>	<b>76.1</b>	35	64	2.5	2.5	0.37	2.5	2.5	0.37
1.1/4 x 3	<b>38</b>	<b>x</b>	<b>88.9</b>	35	64	2.5	2.5	0.45	2.5	2.5	0.45
1.1/2 x 1.1/2	<b>44.5</b>	<b>x</b>	<b>44.5</b>	35	74	2.5	2.5	0.25	2.5	2.5	0.25
1.1/2 x 2	<b>44.5</b>	<b>x</b>	<b>57</b>	35	74	2.5	2.5	0.28	2.5	2.5	0.28
1.1/2 x 2.1/2	<b>44.5</b>	<b>x</b>	<b>76.1</b>	35	74	2.5	2.5	0.42	2.5	2.5	0.42
1.1/2 x 3	<b>44.5</b>	<b>x</b>	<b>88.9</b>	35	74	2.5	2.5	0.55	2.5	2.5	0.55
1.1/2 x 4	<b>44.5</b>	<b>x</b>	<b>108</b>	35	74	2.5	3	0.38	2.5	3	0.38
2 x 2	<b>57</b>	<b>x</b>	<b>57</b>	40	97	2.5	2.5	0.4	2.5	2.5	0.4
2 x 2.1/2	<b>57</b>	<b>x</b>	<b>76.1</b>	40	97	2.5	2.5	0.6	2.5	2.5	0.6
2 x 3	<b>57</b>	<b>x</b>	<b>88.9</b>	40	97	2.5	2.5	0.62	2.5	2.5	0.62
2 x 4	<b>57</b>	<b>x</b>	<b>108</b>	40	97	2.5	3	0.48	2.5	3	0.48
2.1/2 x 2.1/2	<b>76.1</b>	<b>x</b>	<b>76.1</b>	50	126	2.5	2.5	0.65	2.5	2.5	0.65
2.1/2 x 3	<b>76.1</b>	<b>x</b>	<b>88.9</b>	50	126	2.5	2.5	0.7	2.5	2.5	0.7
2.1/2 x 4	<b>76.1</b>	<b>x</b>	<b>108</b>	50	126	2.5	3	0.78	2.5	3	0.78
2.1/2 x 6	<b>76.1</b>	<b>x</b>	<b>159</b>	50	126	2.5	3	0.78	2.5	3.5	0.91



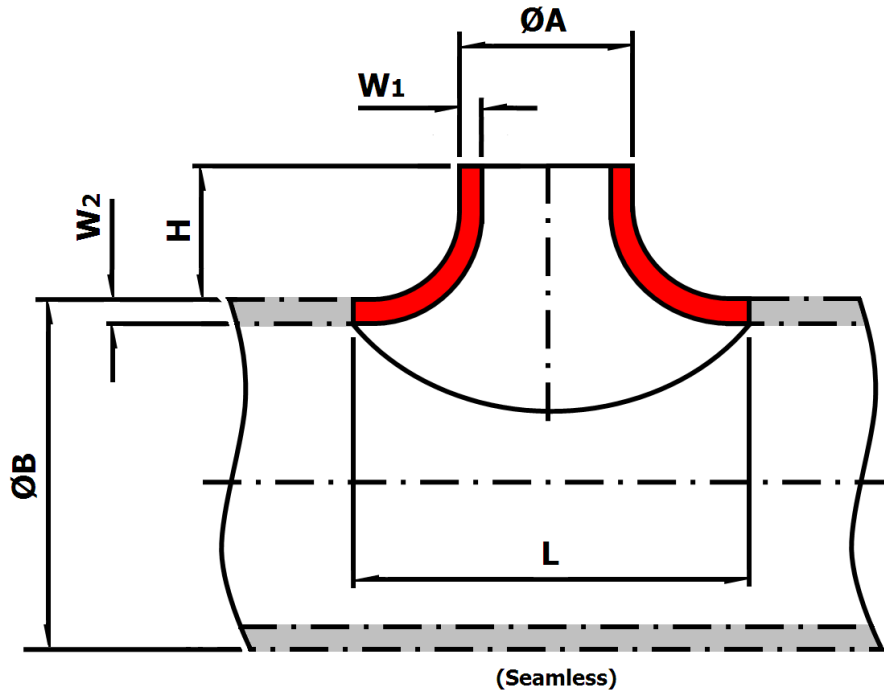
## Marine Engineering Pipeworks Ltd.

Leechmere Industrial Estate, Grangetown, Sunderland, SR2 9TE, United Kingdom  
 Tel: +44 191 521 1941 - Fax: +44 191 523 6954 - E-mail: Info@Mepsun.com - Web: www.Mepsun.com

# Butt Weld Saddles (Seamless)

90/10 CuNi UNS C7060X

**EEMUA 234:2015 Chapter 13**  
**(Formerly EEMUA 146/7)**



Nominal Size Inch x Inch	ØA mm x mm		ØB mm	H mm	L mm	16 Bar			20 Bar		
						W1 mm	W2 mm	Weight Kg	W1 mm	W2 mm	Weight Kg
<b>Seamless</b>											
3 x 3	88.9	x	88.9	55	149	2.5	2.5	0.95	2.5	2.5	0.95
3 x 4	88.9	x	108	55	149	2.5	3	0.94	2.5	3	0.94
3 x 6	88.9	x	159	55	149	2.5	3	1.2	2.5	3.5	1.4
3 x 8	88.9	x	219.1	55	149	2.5	4	1.73	2.5	4.5	1.94
4 x 4	108	x	108	75	188	3	3	1.56	3	3	1.56
4 x 6	108	x	159	75	188	3	3	1.44	3	3.5	1.68
4 x 8	108	x	219.1	75	188	3	4	2.4	3	4.5	2.7
4 x 10	108	x	267	75	188	3	4.5	2.7	3	5.5	3.3
6 x 6	159	x	159	95	279	3	3	3.12	3.5	3.5	3.64
6 x 8	159	x	219.1	95	279	3	4	5.06	3.5	4.5	5.69
6 x 10	159	x	267	95	279	3	4.5	5.54	3.5	5.5	6.77
6 x 12	159	x	323.9	95	279	3	5.5	5.22	3.5	7	6.64
8 x 8	219.1	x	219.1	125	379	4	4	7.6	4.5	4.5	8.55
8 x 10	219.1	x	267	125	379	4	4.5	9.14	4.5	5.5	11.17
8 x 12	219.1	x	323.9	125	379	4	5.5	10.58	4.5	7	13.46
10 x 10	267	x	267	155	447	4.5	4.5	13.05	5.5	5.5	15.95
10 x 12	267	x	323.9	155	447	4.5	5.5	13.75	5.5	7	17.5
12 x 12	323.9	x	323.9	185	560	5.5	5.5	17.87	7	7	22.74



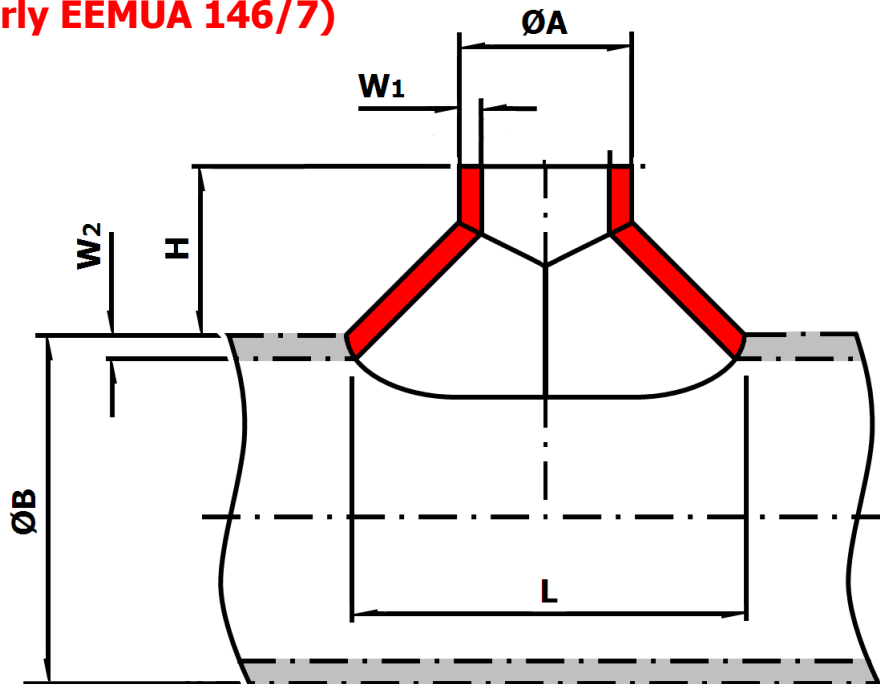
## Marine Engineering Pipeworks Ltd.

Leechmere Industrial Estate, Grangetown, Sunderland, SR2 9TE, United Kingdom  
Tel: +44 191 521 1941 - Fax: +44 191 523 6954 - E-mail: Info@Mepsun.com - Web: www.Mepsun.com

# Butt Weld Saddles (Welded)

90/10 CuNi UNS C7060X

**EEMUA 234:2015 Chapter 13**  
(Formerly EEMUA 146/7)



(Seam Welded)

Nominal Size Inch x Inch	ØA mm	x	ØB mm	H mm	L mm	16 Bar			20 Bar		
						W1 mm	W2 mm	Weight Kg	W1 mm	W2 mm	Weight Kg
<b>Seam Welded</b>											
8 x 8	219.1	x	219.1	125	379	4	4	5.7	4.5	4.5	6.4
8 x 10	219.1	x	267	125	379	4	4.5	6.75	4.5	5.5	8.25
8 x 12	219.1	x	323.9	125	379	4	5.5	6.6	4.5	7	8.4
8 x 14	219.1	x	368	125	379	4	6.5	7.1	4.5	8	8.75
10 x 10	267	x	267	155	447	4.5	4.5	12.4	5.5	5.5	15.15
10 x 12	267	x	323.9	155	447	4.5	5.5	12.1	5.5	7	15.4
10 x 14	267	x	368	155	447	4.5	6.5	11.8	5.5	8	14.55
10 x 16	267	x	419	155	447	4.5	7	11.65	5.5	9	15
12 x 12	323.9	x	323.9	185	560	5.5	5.5	15.4	7	7	19.6
12 x 14	323.9	x	368	185	560	5.5	6.5	15.4	7	8	18.95
12 x 16	323.9	x	419	185	560	5.5	7	16.35	7	9	21
12 x 18	323.9	x	457.2	185	560	5.5	8	16	7	9.5	19
14 x 14	368	x	368	200	613	6.5	6.5	20.1	8	8	24.75
14 x 16	368	x	419	200	613	6.5	7	19.5	8	9	25.1
14 x 18	368	x	457.2	200	613	6.5	8	19.45	8	9.5	23.1
14 x 20	368	x	508	200	613	6.5	8.5	20.4	8	11	26.4
16 x 16	419	x	419	225	680	7	7	28.2	9	9	36.25
16 x 18	419	x	457.2	225	680	7	8	29.7	9	9.5	35.25
16 x 20	419	x	508	225	680	7	8.5	31.75	9	11	41.1
16 x 24	419	x	610	225	680	7	11	36.15	9	13	44.75
18 x 18	457.2	x	457.2	250	800	8	8	43.4	9.5	9.5	51.55
18 x 20	457.2	x	508	250	800	8	8.5	43.1	9.5	11	55.8
18 x 24	457.2	x	610	250	800	8	11	47.85	9.5	13	59.25
20 x 20	508	x	508	275	880	8.5	8.5	54.4	11	11	70.4
20 x 24	508	x	610	275	880	8.5	11	56	11	13	69.3
24 x 24	610	x	610	300	1020	11	11	99.2	13	13	122.8



## Marine Engineering Pipeworks Ltd.

Leechmere Industrial Estate, Grangetown, Sunderland, SR2 9TE, United Kingdom  
Tel: +44 191 521 1941 - Fax: +44 191 523 6954 - E-mail: Info@Mepsun.com - Web: www.Mepsun.com

# Machined Fittings

Manufactured in 90/10 Copper Nickel Alloy UNS C7060X.

Material and dimensions to EEMUA 234:2015 Chapters 8 - 12

(Formerly EEMUA 146/2 - 146/6)

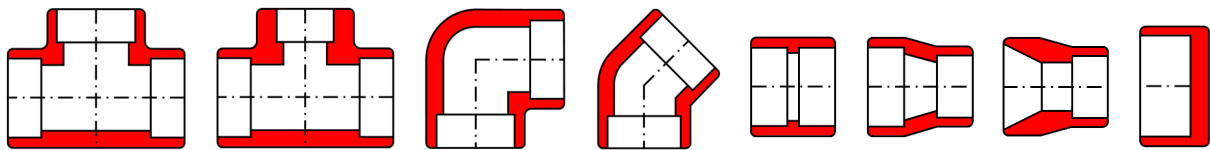
Maximum allowable working pressure of 20 bar at 38°C.

Socket weld fittings are also available as Capillary fittings.

## **Basic Socket Weld Fittings**

Pages 38 - 45

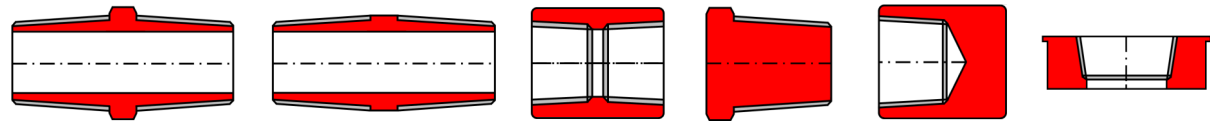
- Equal / Reducing Tee • 90° / 45° Elbow • Equal / Reducing Coupling • Reducing Insert • End Cap •



## **Basic Threaded Fittings**

Pages 46 - 51

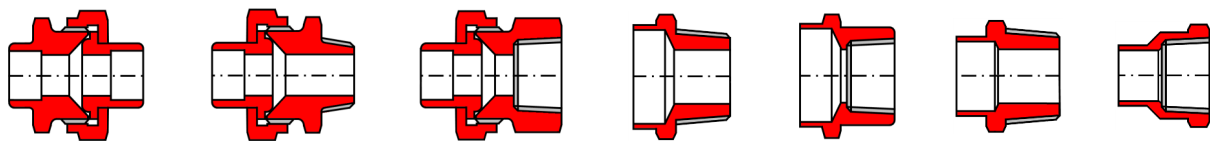
- Hex Nipple • Pipe Nipple • Coupling • Hex Plug • End Cap • Sprinkler Bush •



## **Unions, Connectors And Adaptors**

Pages 52 - 58

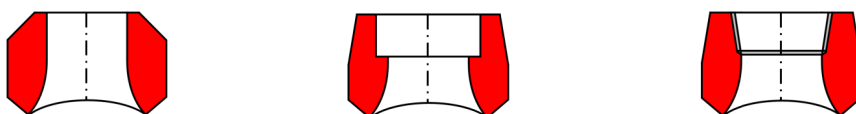
- Socket Weld Union • Male / Female Union • Male / Female Connector • Male / Female Adaptor •



## **Branch Connectors**

Pages 59 - 61

- Weldolet • Sockolet • Thredolet •



## **Marine Engineering Pipeworks Ltd.**

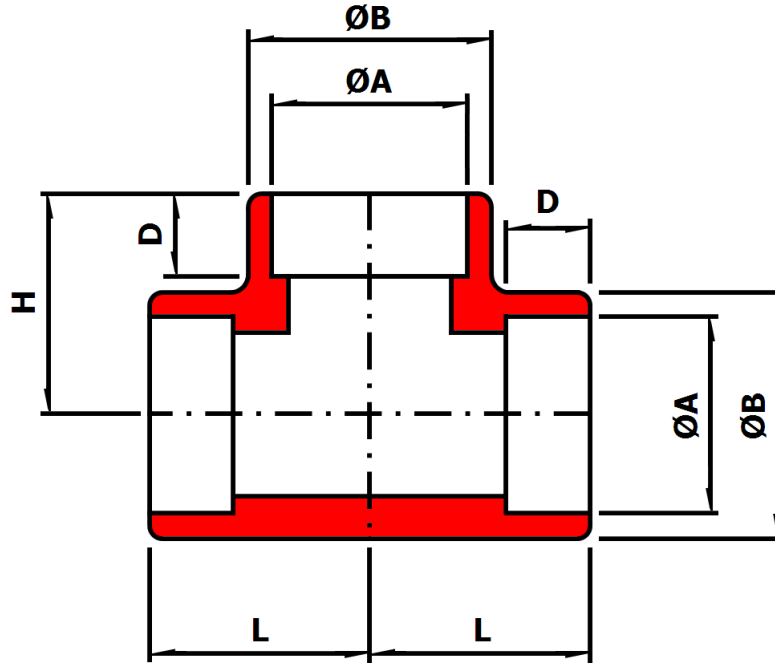
Leechmere Industrial Estate, Grangetown, Sunderland, SR2 9TE, United Kingdom  
Tel: +44 191 521 1941 - Fax: +44 191 523 6954 - E-mail: Info@Mepsun.com - Web: www.Mepsun.com

# Socket Weld Equal Tee

90/10 Copper Nickel UNS C7060X

**EEMUA 234:2015 Chapter 8**  
**(Formerly EEMUA 146/2)**

Also available as a Capillary fitting.



Nominal Size (Inch)	Actual Size (mm)	$\text{ØB}$ (mm)	L (mm)	H (mm)	$\text{ØA}$ (mm)	D (mm)	Weight (Kg)
1/2	<b>16</b>	22.2	20	20	16.1	10	0.09
3/4	<b>25</b>	33	29	29	25.1	13	0.31
1	<b>30</b>	38	34	34	30.1	13	0.37
1.1/4	<b>38</b>	46	38	38	38.1	13	0.65
1.1/2	<b>44.5</b>	56	44	44	44.6	13	1.08
2	<b>57</b>	63.5	50	50	57.3	16	1.43



## Marine Engineering Pipeworks Ltd.

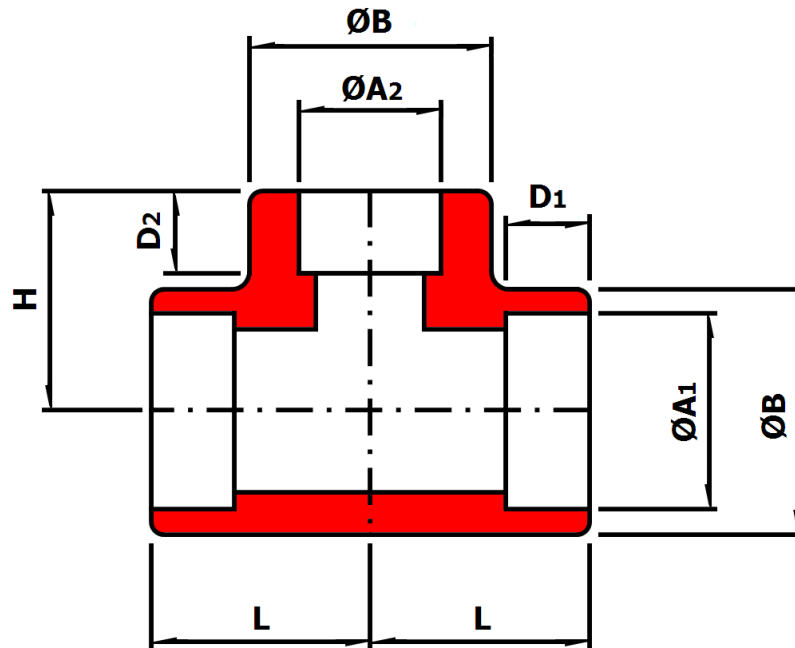
Leechmere Industrial Estate, Grangetown, Sunderland, SR2 9TE, United Kingdom  
 Tel: +44 191 521 1941 - Fax: +44 191 523 6954 - E-mail: Info@Mepsun.com - Web: www.Mepsun.com

# Socket Weld Reducing Tee

90/10 Copper Nickel UNS C7060X

**EEMUA 234:2015 Chapter 8**  
**(Formerly EEMUA 146/2)**

Also available as a Capillary fitting.



Nominal Size		Actual Size		$\text{ØB}$	H	$\text{ØA1}$	D1	$\text{ØA2}$	D2	Weight
(Inch)	(Inch)	(mm)	(mm)							
3/4	x 1/2	25	x 16	33	29	25.1	13	16.1	10	0.37
1	x 1/2	30	x 16	38	34	30.1	13	16.1	10	0.47
1	x 3/4	30	x 25	38	34	30.1	13	25.1	13	0.41
1.1/4	x 1/2	38	x 16	46	38	38.1	13	16.1	10	0.83
1.1/4	x 3/4	38	x 25	46	38	38.1	13	25.1	13	0.77
1.1/4	x 1	38	x 30	46	38	38.1	13	30.1	13	0.73
1.1/2	x 1/2	44.5	x 16	56	44	44.6	13	16.1	10	1.35
1.1/2	x 3/4	44.5	x 25	56	44	44.6	13	25.1	13	1.29
1.1/2	x 1	44.5	x 30	56	44	44.6	13	30.1	13	1.25
1.1/2	x 1.1/4	44.5	x 38	56	44	44.6	13	38.1	13	1.17
2	x 1/2	57	x 16	63.5	50	57.3	16	16.1	10	1.89
2	x 3/4	57	x 25	63.5	50	57.3	16	25.1	13	1.83
2	x 1	57	x 30	63.5	50	57.3	16	30.1	13	1.79
2	x 1.1/4	57	x 38	63.5	50	57.3	16	38.1	13	1.71
2	x 1.1/2	57	x 44.5	63.5	50	57.3	16	44.6	13	1.62



## Marine Engineering Pipeworks Ltd.

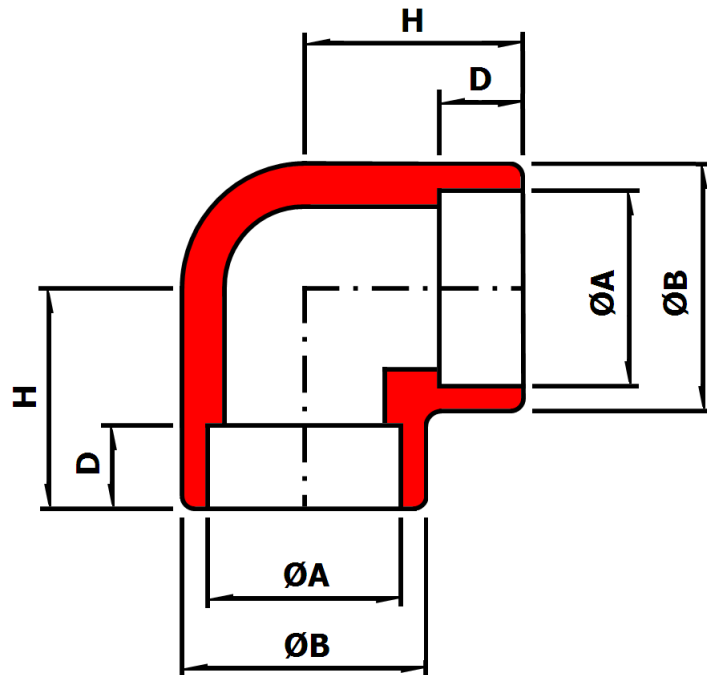
Leechmere Industrial Estate, Grangetown, Sunderland, SR2 9TE, United Kingdom  
 Tel: +44 191 521 1941 - Fax: +44 191 523 6954 - E-mail: Info@Mepsun.com - Web: www.Mepsun.com

# Socket Weld 90° Elbow

90/10 Copper Nickel UNS C7060X

**EEMUA 234:2015 Chapter 8**  
**(Formerly EEMUA 146/2)**

Also available as a Capillary fitting.



Nominal Size (Inch)	Actual Size (mm)	ØB (mm)	H (mm)	D (mm)	ØA (mm)	Weight (Kg)
1/2	<b>16</b>	22.2	20	10	16.1	0.07
3/4	<b>25</b>	33	29	13	25.1	0.26
1	<b>30</b>	38	34	13	30.1	0.32
1.1/4	<b>38</b>	46	38	13	38.1	0.59
1.1/2	<b>44.5</b>	56	44	13	44.6	1.01
2	<b>57</b>	63.5	50	16	57.3	1.31



## Marine Engineering Pipeworks Ltd.

Leechmere Industrial Estate, Grangetown, Sunderland, SR2 9TE, United Kingdom  
 Tel: +44 191 521 1941 - Fax: +44 191 523 6954 - E-mail: Info@Mepsun.com - Web: www.Mepsun.com

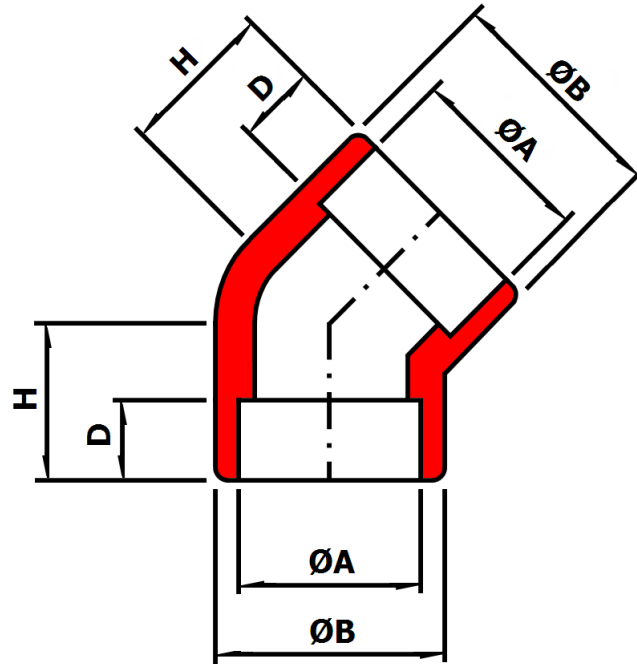


# Socket Weld 45° Elbow

90/10 Copper Nickel UNS C7060X

**EEMUA 234:2015 Chapter 8**  
**(Formerly EEMUA 146/2)**

Also available as a Capillary fitting.



Nominal Size (Inch)	Actual Size (mm)	ØB (mm)	H (mm)	D (mm)	ØA (mm)	Weight (Kg)
1/2	<b>16</b>	22.2	19	10	16.1	0.07
3/4	<b>25</b>	33	22.5	13	25.1	0.26
1	<b>30</b>	38	25.5	13	30.1	0.41
1.1/4	<b>38</b>	46	28.5	13	38.1	0.64
1.1/2	<b>44.5</b>	56	33	13	44.6	0.69
2	<b>57</b>	63.5	36	16	57.3	1.09



## Marine Engineering Pipeworks Ltd.

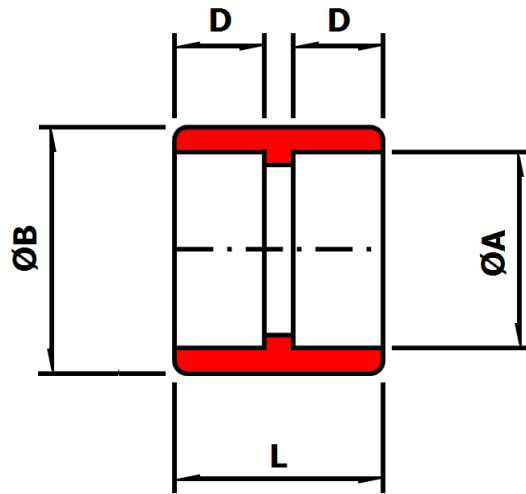
Leechmere Industrial Estate, Grangetown, Sunderland, SR2 9TE, United Kingdom  
 Tel: +44 191 521 1941 - Fax: +44 191 523 6954 - E-mail: Info@Mepsun.com - Web: www.Mepsun.com

# Socket Weld Straight Coupling

90/10 Copper Nickel UNS C7060X

**EEMUA 234:2015 Chapter 8**  
**(Formerly EEMUA 146/2)**

Also available as a Capillary fitting.



Nominal Size (Inch)	Actual Size (mm)	ØB (mm)	L (mm)	ØA (mm)	D (mm)	Weight (Kg)
1/2	<b>16</b>	23	23	16.1	10	0.04
3/4	<b>25</b>	32	30	25.1	13	0.08
1	<b>30</b>	37	30	30.1	13	0.1
1.1/4	<b>38</b>	45	30	38.1	13	0.12
1.1/2	<b>44.5</b>	52	31	44.6	13	0.17
2	<b>57</b>	64	38	57.3	16	0.22



## Marine Engineering Pipeworks Ltd.

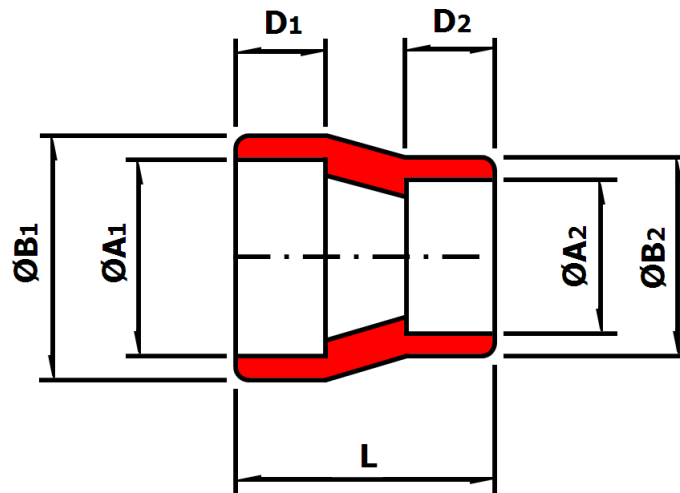
Leechmere Industrial Estate, Grangetown, Sunderland, SR2 9TE, United Kingdom  
 Tel: +44 191 521 1941 - Fax: +44 191 523 6954 - E-mail: Info@Mepsun.com - Web: www.Mepsun.com

# Socket Weld Reducing Coupling

90/10 Copper Nickel UNS C7060X

**EEMUA 234:2015 Chapter 8**  
**(Formerly EEMUA 146/2)**

Also available as a Capillary fitting.



Nominal Size (Inch)      (Inch)			Actual Size (mm)      (mm)		ØB1 (mm)	ØA1 (mm)	D1 (mm)	ØB2 (mm)	ØA2 (mm)	D2 (mm)	L (mm)	Weight (Kg)	
3/4	x	1/2	<b>25</b>	x	<b>16</b>	32	25.1	13	23	16.1	10	33	0.07
1	x	1/2	<b>30</b>	x	<b>16</b>	37	30.1	13	23	16.1	10	35	0.09
1	x	3/4	<b>30</b>	x	<b>25</b>	37	30.1	13	32	25.1	13	28	0.08
1.1/4	x	1/2	<b>38</b>	x	<b>16</b>	45	38.1	13	23	16.1	10	45	0.18
1.1/4	x	3/4	<b>38</b>	x	<b>25</b>	45	38.1	13	32	25.1	13	36	0.16
1.1/4	x	1	<b>38</b>	x	<b>30</b>	45	38.1	13	37	30.1	13	33	0.15
1.1/2	x	1/2	<b>44.5</b>	x	<b>16</b>	52	44.6	13	23	16.1	10	51	0.2
1.1/2	x	3/4	<b>44.5</b>	x	<b>25</b>	52	44.6	13	32	25.1	13	42	0.22
1.1/2	x	1	<b>44.5</b>	x	<b>30</b>	52	44.6	13	37	30.1	13	39	0.23
1.1/2	x	1.1/4	<b>44.5</b>	x	<b>38</b>	52	44.6	13	45	38.1	13	36	0.24
2	x	1/2	<b>57</b>	x	<b>16</b>	64	57.3	16	23	16.1	10	62	0.28
2	x	3/4	<b>57</b>	x	<b>25</b>	64	57.3	16	32	25.1	13	54	0.26
2	x	1	<b>57</b>	x	<b>30</b>	64	57.3	16	37	30.1	13	50	0.25
2	x	1.1/4	<b>57</b>	x	<b>38</b>	64	57.3	16	45	38.1	13	47	0.24
2	x	1.1/2	<b>57</b>	x	<b>44.5</b>	64	57.3	16	52	44.6	13	41	0.23



## Marine Engineering Pipeworks Ltd.

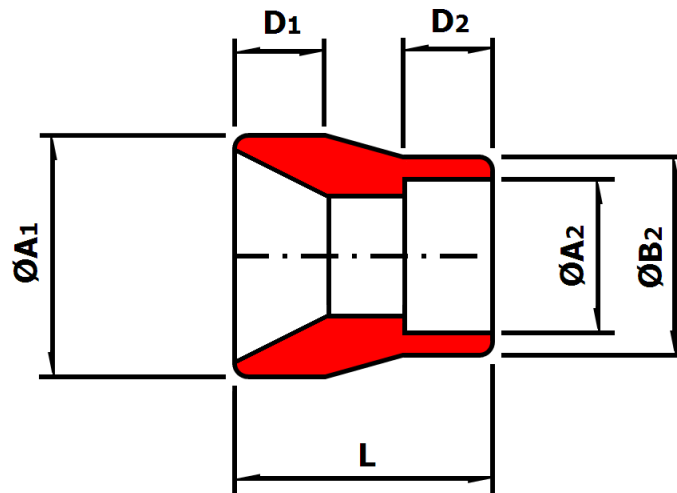
Leechmere Industrial Estate, Grangetown, Sunderland, SR2 9TE, United Kingdom  
 Tel: +44 191 521 1941 - Fax: +44 191 523 6954 - E-mail: Info@Mepsun.com - Web: www.Mepsun.com

# Socket Weld Reducing Insert

90/10 Copper Nickel UNS C7060X

**EEMUA 234:2015 Chapter 8**  
**(Formerly EEMUA 146/2)**

Also available as a Capillary fitting.



Nominal Size (Inch) x (Inch)	Actual Size (mm) x (mm)	ØA1 (mm)	D1 (mm)	ØA2 (mm)	ØB2 (mm)	D2 (mm)	L (mm)	Weight (Kg)
3/4 x 1/2	25 x 16	25	12	16.1	23	10	23	0.05
1 x 1/2	30 x 16	30	13	16.1	22	10	30	0.06
1 x 3/4	30 x 25	30	13	25.1	32	13	24	0.06
1.1/4 x 1/2	38 x 16	38	17	16.1	23	10	41	0.12
1.1/4 x 3/4	38 x 25	38	17	25.1	32	13	32	0.12
1.1/4 x 1	38 x 30	38	17	30.1	37	13	30	0.1
1.1/2 x 1/2	44.5 x 16	44.5	17	16.1	23	10	43	0.18
1.1/2 x 3/4	44.5 x 25	44.5	17	25.1	32	13	38	0.16
1.1/2 x 1	44.5 x 30	44.5	17	30.1	37	13	34	0.15
1.1/2 x 1.1/4	44.5 x 38	44.5	17	38.1	45	13	34	0.11
2 x 1/2	57 x 16	57	17	16.1	23	10	52	0.3
2 x 3/4	57 x 25	57	17	25.1	32	13	45	0.31
2 x 1	57 x 30	57	17	30.1	37	13	45	0.32
2 x 1.1/4	57 x 38	57	17	38.1	45	13	42	0.28
2 x 1.1/2	57 x 44.5	57	17	44.6	52	13	36	0.26



## Marine Engineering Pipeworks Ltd.

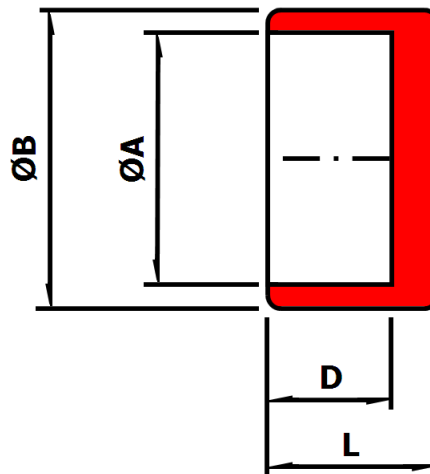
Leechmere Industrial Estate, Grangetown, Sunderland, SR2 9TE, United Kingdom  
 Tel: +44 191 521 1941 - Fax: +44 191 523 6954 - E-mail: Info@Mepsun.com - Web: www.Mepsun.com

# Socket Weld End Cap

90/10 Copper Nickel UNS C7060X

**EEMUA 234:2015 Chapter 8**  
**(Formerly EEMUA 146/2)**

Also available as a Capillary fitting.



Nominal Size (Inch)	Actual Size (mm)	ØA (mm)	ØB (mm)	L (mm)	D (mm)	Weight (Kg)
1/2	<b>16</b>	16.1	23	14	10	0.04
3/4	<b>25</b>	25.1	32	15	13	0.07
1	<b>30</b>	30.1	37	16	13	0.08
1.1/4	<b>38</b>	38.1	45	20	13	0.13
1.1/2	<b>44.5</b>	44.6	52	20.5	13	0.19
2	<b>57</b>	57.3	64	20.5	16	0.22



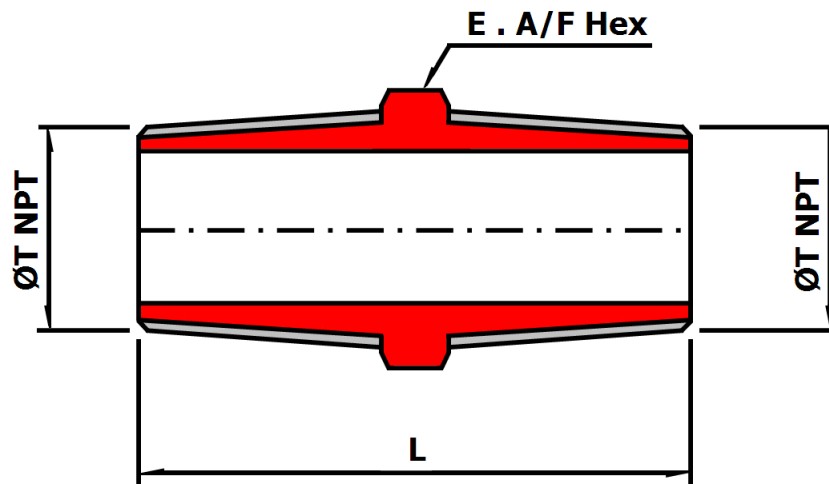
## Marine Engineering Pipeworks Ltd.

Leechmere Industrial Estate, Grangetown, Sunderland, SR2 9TE, United Kingdom  
 Tel: +44 191 521 1941 - Fax: +44 191 523 6954 - E-mail: Info@Mepsun.com - Web: www.Mepsun.com

# NPT Hex Nipple

90/10 Copper Nickel UNS C7060X

**EEMUA 234:2015 Chapter 11**  
**(Formerly EEMUA 146/5)**



<b>ØT NPT (Thread, Inch)</b>	<b>L (mm)</b>	<b>E. A/F Hex (mm)</b>	<b>Weight (Kg)</b>
<b>1/4"</b>	42	17	0.05
<b>3/8"</b>	47	22	0.11
<b>1/2"</b>	48	24	0.13
<b>3/4</b>	52	30	0.2
<b>1</b>	60	36	0.29
<b>1.1/4</b>	72	46	0.36
<b>1.1/2</b>	74	50	0.43
<b>2</b>	78	65	0.59



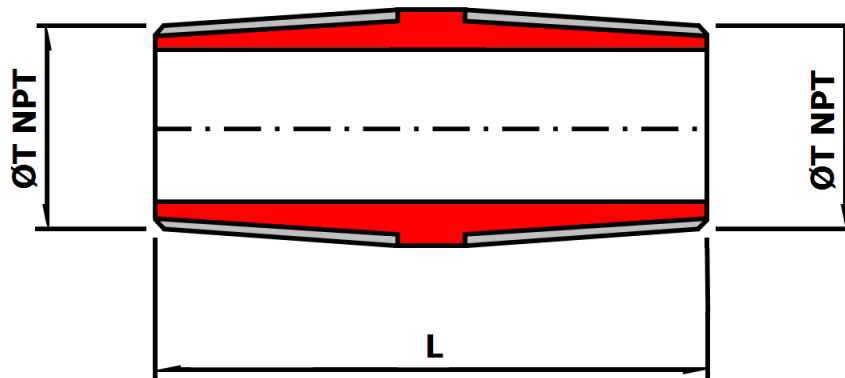
## Marine Engineering Pipeworks Ltd.

Leechmere Industrial Estate, Grangetown, Sunderland, SR2 9TE, United Kingdom  
 Tel: +44 191 521 1941 - Fax: +44 191 523 6954 - E-mail: Info@Mepsun.com - Web: www.Mepsun.com

# NPT Pipe Nipple

90/10 Copper Nickel UNS C7060X

**EEMUA 234:2015 Chapter 11**  
**(Formerly EEMUA 146/5)**



<b>ØT NPT (Thread, Inch)</b>	<b>L (mm)</b>	<b>Weight (Kg)</b>
<b>1/4</b>	42	0.04
<b>3/8</b>	47	0.1
<b>1/2</b>	48	0.12
<b>3/4</b>	52	0.19
<b>1</b>	60	0.28
<b>1.1/4</b>	72	0.35
<b>1.1/2</b>	74	0.42
<b>2</b>	78	0.58



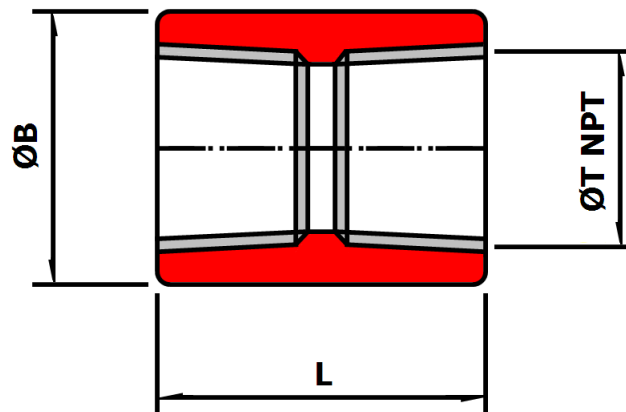
## Marine Engineering Pipeworks Ltd.

Leechmere Industrial Estate, Grangetown, Sunderland, SR2 9TE, United Kingdom  
 Tel: +44 191 521 1941 - Fax: +44 191 523 6954 - E-mail: Info@Mepsun.com - Web: www.Mepsun.com

# NPT Coupling

90/10 Copper Nickel UNS C7060X

**EEMUA 234:2015 Chapter 11**  
**(Formerly EEMUA 146/5)**



<b>ØT NPT</b> <b>(Thread, Inch)</b>	<b>ØB</b> <b>(mm)</b>	<b>L</b> <b>(mm)</b>	<b>Weight</b> <b>(Kg)</b>
<b>1/2</b>	29	48	0.16
<b>3/4</b>	35	51	0.28
<b>1</b>	44	60	0.38
<b>1.1/4</b>	57	67	0.58
<b>1.1/2</b>	64	79	0.78
<b>2</b>	76	86	1.42



## Marine Engineering Pipeworks Ltd.

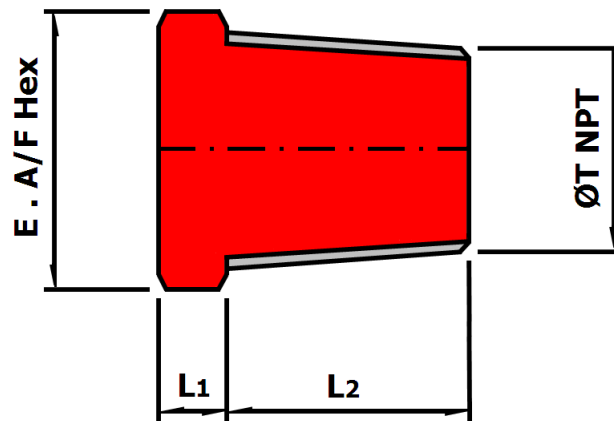
Leechmere Industrial Estate, Grangetown, Sunderland, SR2 9TE, United Kingdom  
 Tel: +44 191 521 1941 - Fax: +44 191 523 6954 - E-mail: Info@Mepsun.com - Web: www.Mepsun.com



# NPT Plug

90/10 Copper Nickel UNS C7060X

**EEMUA 234:2015 Chapter 11**  
**(Formerly EEMUA 146/5)**



<b>ØT NPT (Thread, Inch)</b>	<b>L1 (mm)</b>	<b>L2 (mm)</b>	<b>E. A/F Hex (mm)</b>	<b>Weight (Kg)</b>
<b>1/2</b>	8	18	24	0.17
<b>3/4</b>	10	18	30	0.3
<b>1</b>	10	21	36	0.55
<b>1.1/4</b>	14	22	46	0.95
<b>1.1/2</b>	16	22	50	1.1
<b>2</b>	17	22	65	1.85



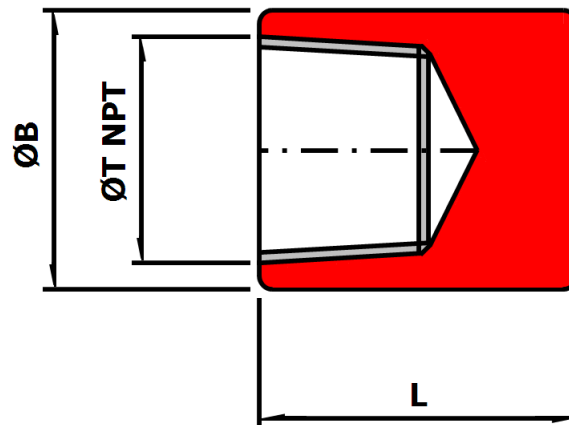
## Marine Engineering Pipeworks Ltd.

Leechmere Industrial Estate, Grangetown, Sunderland, SR2 9TE, United Kingdom  
 Tel: +44 191 521 1941 - Fax: +44 191 523 6954 - E-mail: Info@Mepsun.com - Web: www.Mepsun.com

# NPT End Cap

90/10 Copper Nickel UNS C7060X

**EEMUA 234:2015 Chapter 11**  
**(Formerly EEMUA 146/5)**



<b>ØT NPT (Thread, Inch)</b>	<b>ØB (mm)</b>	<b>L (mm)</b>	<b>Weight (Kg)</b>
<b>1/2</b>	29	32	0.17
<b>3/4</b>	35	37	0.3
<b>1</b>	44	38	0.55
<b>1.1/4</b>	57	41	0.95
<b>1.1/2</b>	64	41	1.1
<b>2</b>	76	42	1.85



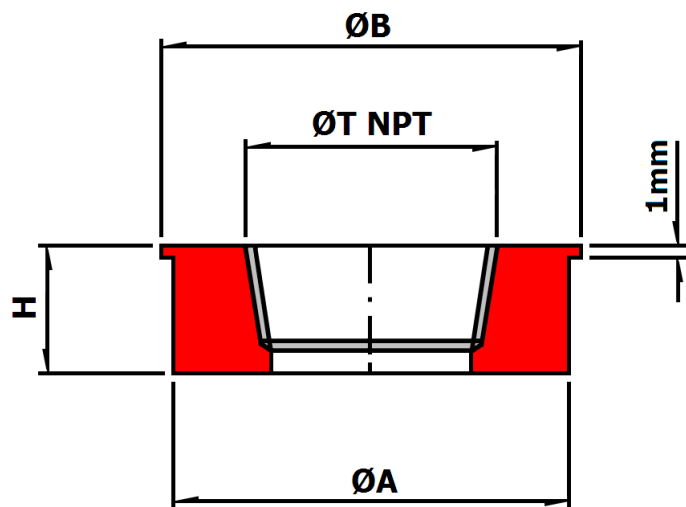
## Marine Engineering Pipeworks Ltd.

Leechmere Industrial Estate, Grangetown, Sunderland, SR2 9TE, United Kingdom  
 Tel: +44 191 521 1941 - Fax: +44 191 523 6954 - E-mail: Info@Mepsun.com - Web: www.Mepsun.com

# NPT Sprinkler Bush

90/10 Copper Nickel UNS C7060X

**EEMUA 234:2015 Chapter 11**  
**(Formerly EEMUA 146/5)**



Nominal Size (Inch)      (Inch)		Actual Size (mm x Thread)	$\text{ØA}$ (mm)	$\text{ØB}$ (mm)	$\text{ØT NPT}$ (Thread, Inch)	H (mm)	Weight (Kg)
1	x 1/2	<b>30mm x 1/2" NPT</b>	30	32	1/2	12	0.03
1.1/2	x 1/2	<b>44.5mm x 1/2" NPT</b>	44.5	47	1/2	16	0.09
1.1/2	x 3/4	<b>44.5mm x 3/4" NPT</b>	44.5	47	3/4	16	0.08



## Marine Engineering Pipeworks Ltd.

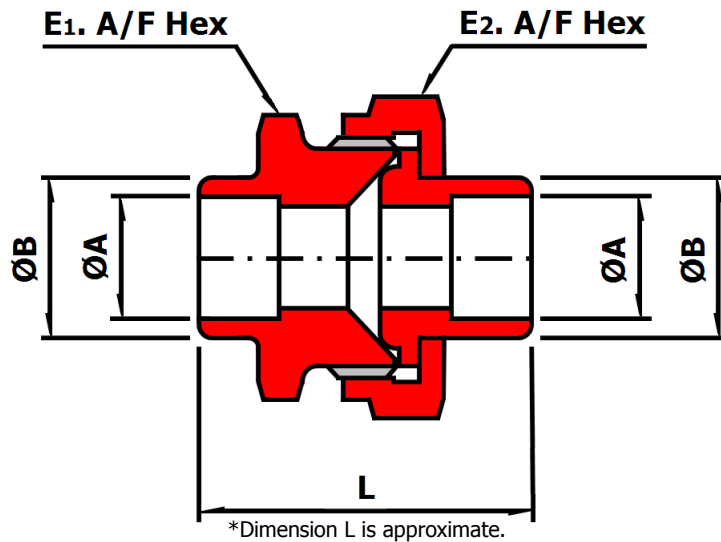
Leechmere Industrial Estate, Grangetown, Sunderland, SR2 9TE, United Kingdom  
 Tel: +44 191 521 1941 - Fax: +44 191 523 6954 - E-mail: Info@Mepsun.com - Web: www.Mepsun.com

# Socket Weld Union

90/10 Copper Nickel UNS C7060X

**EEMUA 234:2015 Chapter 8**  
**(Formerly EEMUA 146/2)**

Also available as a Capillary fitting.



Nominal Size (Inch)	Actual Size (mm)	ØB (mm)	L (mm)	ØA (mm)	E1. A/F Hex (mm)	E2. A/F Hex (mm)	Weight (Kg)
1/2	<b>16</b>	23	62	16.1	36	42	0.24
3/4	<b>25</b>	32	73	25.1	46	50	0.44
1	<b>30</b>	37	73	30.1	50	60	0.55
1.1/4	<b>38</b>	45	79	38.1	65	70	0.73
1.1/2	<b>44.5</b>	52	84	44.6	65	70	1.08
2	<b>57</b>	64	94	57.3	80	85	1.54



## Marine Engineering Pipeworks Ltd.

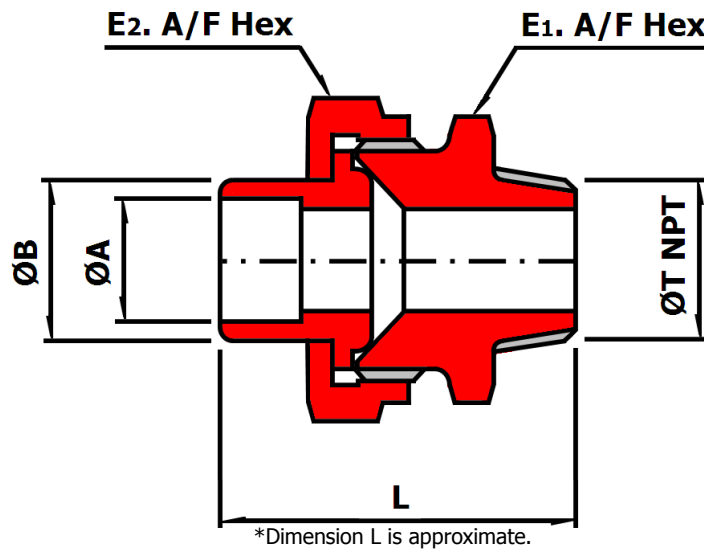
Leechmere Industrial Estate, Grangetown, Sunderland, SR2 9TE, United Kingdom  
 Tel: +44 191 521 1941 - Fax: +44 191 523 6954 - E-mail: Info@Mepsun.com - Web: www.Mepsun.com

# Socket Weld NPT Male Union

90/10 Copper Nickel UNS C7060X

**EEMUA 234:2015 Chapter 8**  
**(Formerly EEMUA 146/2)**

Also available as a Capillary fitting.



Nominal Size (Inch)	Actual Size (mm)	ØT NPT (Thread, Inch)	ØA (mm)	ØB (mm)	L (mm)	E1. A/F Hex (mm)	E2. A/F Hex (mm)	Weight (Kg)
1/2	<b>16</b>	1/2	16.1	23	74	36	42	0.35
3/4	<b>25</b>	3/4	25.1	32	82	46	50	0.55
1	<b>30</b>	1	30.1	37	89	50	60	0.73
1.1/4	<b>38</b>	1.1/4	38.1	45	97	65	70	1.05
1.1/2	<b>44.5</b>	1.1/2	44.6	52	100	65	70	1.55
2	<b>57</b>	2	57.3	64	109	80	85	2



## Marine Engineering Pipeworks Ltd.

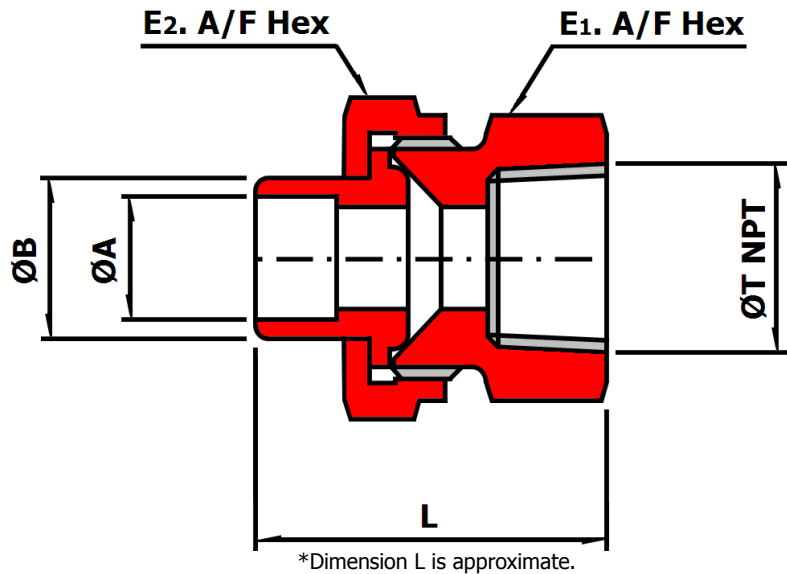
Leechmere Industrial Estate, Grangetown, Sunderland, SR2 9TE, United Kingdom  
 Tel: +44 191 521 1941 - Fax: +44 191 523 6954 - E-mail: Info@Mepsun.com - Web: www.Mepsun.com

# Socket Weld NPT Female Union

90/10 Copper Nickel UNS C7060X

**EEMUA 234:2015 Chapter 8**  
**(Formerly EEMUA 146/2)**

Also available as a Capillary fitting.



Nominal Size (Inch)	Actual Size (mm)	ØT NPT (Thread)	ØB (mm)	ØA (mm)	L (mm)	E1. A/F Hex (mm)	E2. A/F Hex (mm)	Weight (Kg)
1/2	<b>16</b>	1/2	23	16.1	50	27	42	0.25
3/4	<b>25</b>	3/4	32	25.1	56	32	50	0.43
1	<b>30</b>	1	37	30.1	60	41	60	0.45
1.1/4	<b>38</b>	1.1/4	45	38.1	68	50	70	0.72
1.1/2	<b>44.5</b>	1.1/2	52	44.6	70	55	70	0.85
2	<b>57</b>	2	64	57.3	76	70	85	1.35



## Marine Engineering Pipeworks Ltd.

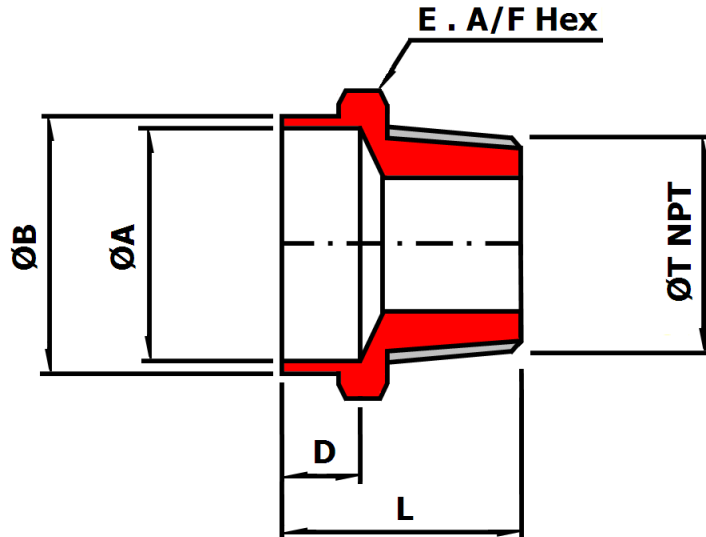
Leechmere Industrial Estate, Grangetown, Sunderland, SR2 9TE, United Kingdom  
 Tel: +44 191 521 1941 - Fax: +44 191 523 6954 - E-mail: Info@Mepsun.com - Web: www.Mepsun.com

# Socket Weld NPT Male Connector

90/10 Copper Nickel UNS C7060X

**EEMUA 234:2015 Chapter 8**  
**(Formerly EEMUA 146/2)**

Also available as a Capillary fitting.



\*Length and Hex Size may vary.

Actual Size (mm) (Inch)	ØA (mm)	ØT NPT (Thread, Inch)	ØB (mm)	D (mm)	L (mm)	E. A/F Hex (mm)	Weight (Kg)
16 x 1/2	16.1	1/2	23	10	30	22	0.1
16 x 3/4	16.1	3/4	23	10	33	30	0.13
16 x 1	16.1	1	23	10	38	36	0.28
25 x 3/4	25.1	3/4	32	13	35	32	0.15
25 x 1	25.1	1	32	13	39	36	0.2
25 x 1.1/4	25.1	1.1/4	32	13	43	46	0.46
25 x 1.1/2	25.1	1.1/2	32	13	44	50	0.62
30 x 3/4	30.1	3/4	37	13	38	41	0.24
30 x 1	30.1	1	37	13	41	41	0.25
30 x 1.1/4	30.1	1.1/4	37	13	44	46	0.39
30 x 1.1/2	30.1	1.1/2	37	13	45	50	0.55
38 x 3/4	38.1	3/4	45	13	44	46	0.3
38 x 1	38.1	1	45	13	44	46	0.27
38 x 1.1/4	38.1	1.1/4	45	13	45	46	0.32
38 x 1.1/2	38.1	1.1/2	45	13	46	50	0.36
44.5 x 1	44.6	1	52	13	47	55	0.4
44.5 x 1.1/4	44.6	1.1/4	52	13	48	55	0.48
44.5 x 1.1/2	44.6	1.1/2	52	13	48	55	0.48
44.5 x 2	44.6	2	52	13	51	65	0.87
57 x 1.1/4	57.3	1.1/4	64	16	51	65	0.68
57 x 1.1/2	57.3	1.1/2	64	16	51	65	0.65
57 x 2	57.3	2	64	16	51	65	0.57
57 x 2.1/2	57.3	2.1/2	64	16	60	75	1.17



## Marine Engineering Pipeworks Ltd.

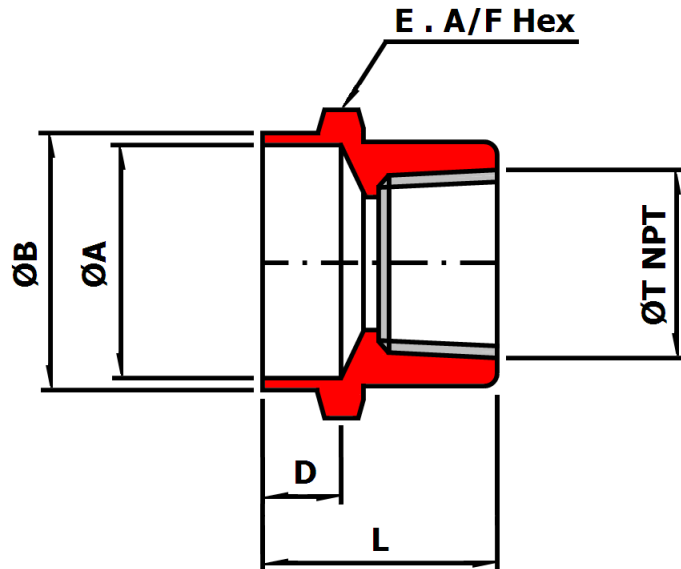
Leechmere Industrial Estate, Grangetown, Sunderland, SR2 9TE, United Kingdom  
 Tel: +44 191 521 1941 - Fax: +44 191 523 6954 - E-mail: Info@Mepsun.com - Web: www.Mepsun.com

# Socket Weld NPT Female Connector

90/10 Copper Nickel UNS C7060X

**EEMUA 234:2015 Chapter 8**  
**(Formerly EEMUA 146/2)**

Also available as a Capillary fitting.



\*Length and Hex Size may vary.

Actual Size (mm) (Inch)	ØA (mm)	ØT NPT (Thread, Inch)	ØB (mm)	D (mm)	L (mm)	E. A/F Hex (mm)	Weight (Kg)
16 x 1/2	16.1	1/2	23	10	31	27	0.07
16 x 3/4	16.1	3/4	23	10	33	32	0.1
16 x 1	16.1	1	23	10	38	41	0.2
25 x 3/4	25.1	3/4	32	13	31	32	0.1
25 x 1	25.1	1	32	13	35	41	0.2
25 x 1.1/4	25.1	1.1/4	32	13	39	50	0.29
25 x 1.1/2	25.1	1.1/2	32	13	41	55	0.32
30 x 3/4	30.1	3/4	37	13	31	41	0.23
30 x 1	30.1	1	37	13	35	41	0.19
30 x 1.1/4	30.1	1.1/4	37	13	38	50	0.28
30 x 1.1/2	30.1	1.1/2	37	13	40	55	0.3
38 x 3/4	38.1	3/4	45	13	39	41	0.39
38 x 1	38.1	1	45	13	39	41	0.31
38 x 1.1/4	38.1	1.1/4	45	13	40	50	0.29
38 x 1.1/2	38.1	1.1/2	45	13	42	55	0.32
44.5 x 1	44.6	1	52	13	43	55	0.55
44.5 x 1.1/4	44.6	1.1/4	52	13	39	55	0.5
44.5 x 1.1/2	44.6	1.1/2	52	13	40	55	0.43
44.5 x 2	44.6	2	52	13	43	70	0.65
57 x 1.1/4	57.3	1.1/4	64	16	45	65	0.8
57 x 1.1/2	57.3	1.1/2	64	16	40	65	0.73
57 x 2	57.3	2	64	16	40	70	0.65
57 x 2.1/2	57.3	2.1/2	64	16	49	85	0.97



## Marine Engineering Pipeworks Ltd.

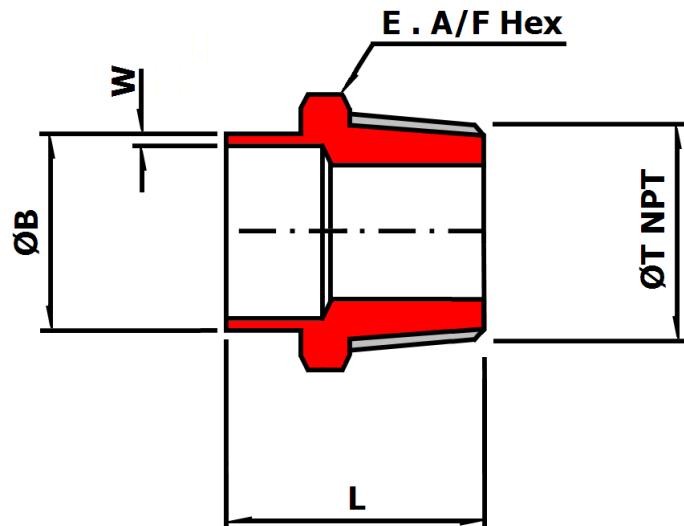
Leechmere Industrial Estate, Grangetown, Sunderland, SR2 9TE, United Kingdom  
 Tel: +44 191 521 1941 - Fax: +44 191 523 6954 - E-mail: Info@Mepsun.com - Web: www.Mepsun.com



# NPT Male Adaptor

90/10 Copper Nickel UNS C7060X

**EEMUA 234:2015 Chapter 8**  
**(Formerly EEMUA 146/2)**



\*Length and Hex Size may vary.

Nominal Size (Inch) (Inch)	Actual Size (mm x NPT Thread)	ØB (mm)	W (mm)	ØT NPT (Thread)	L (mm)	E. A/F Hex (mm)	Weight (Kg)
1/2 x 1/2	<b>16mm x 1/2"</b>	16	2	1/2"	40	27	0.15
3/4 x 3/4	<b>25mm x 3/4"</b>	25	2	3/4"	45	32	0.22
1 x 1	<b>30mm x 1"</b>	30	2.5	1"	53	38	0.32
1.1/4 x 1.1/4	<b>38mm x 1.1/4"</b>	38	2.5	1.1/4"	60	50	0.5
1.1/2 x 1.1/2	<b>44.5mm x 1.1/2"</b>	44.5	2.5	1.1/2"	60	50	0.6
2 x 2	<b>57mm x 2"</b>	57	2.5	2"	70	65	0.98



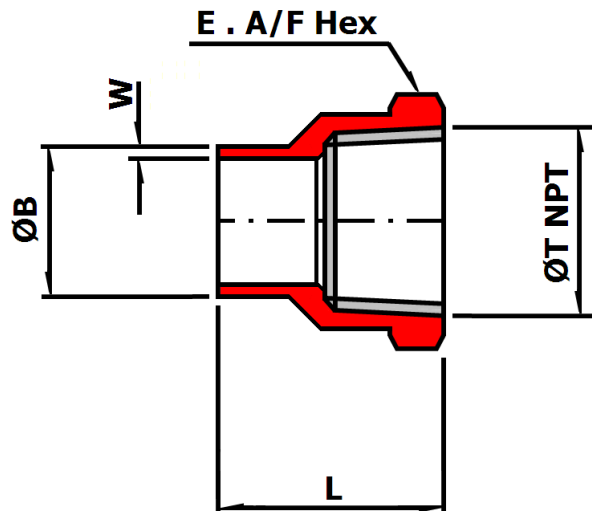
## Marine Engineering Pipeworks Ltd.

Leechmere Industrial Estate, Grangetown, Sunderland, SR2 9TE, United Kingdom  
 Tel: +44 191 521 1941 - Fax: +44 191 523 6954 - E-mail: Info@Mepsun.com - Web: www.Mepsun.com

# NPT Female Adaptor

90/10 Copper Nickel UNS C7060X

**EEMUA 234:2015 Chapter 8**  
**(Formerly EEMUA 146/2)**



\*Length and Hex Size may vary.

Nominal Size (Inch)    (Inch)	Actual Size (mm x NPT Thread)	ØB (mm)	W (mm)	ØT NPT (Thread)	L (mm)	E. A/F Hex (mm)	Weight (Kg)
1/2 x 1/2	<b>16mm x 1/2"</b>	16	2	1/2"	34	27	0.07
3/4 x 3/4	<b>25mm x 3/4"</b>	25	2	3/4"	34	32	0.15
1 x 1	<b>30mm x 1"</b>	30	2.5	1"	39	41	0.25
1.1/4 x 1.1/4	<b>38mm x 1.1/4"</b>	38	2.5	1.1/4"	50	55	0.35
1.1/2 x 1.1/2	<b>44.5mm x 1.1/2"</b>	44.5	2.5	1.1/2"	47	55	0.4
2 x 2	<b>57mm x 2"</b>	57	2.5	2"	51	70	0.5



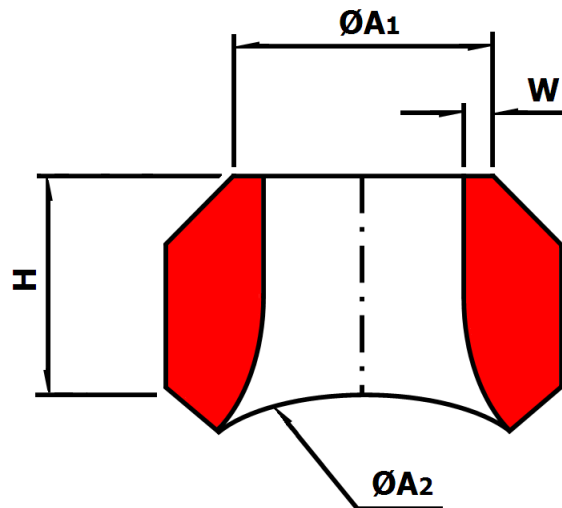
## Marine Engineering Pipeworks Ltd.

Leechmere Industrial Estate, Grangetown, Sunderland, SR2 9TE, United Kingdom  
 Tel: +44 191 521 1941 - Fax: +44 191 523 6954 - E-mail: Info@Mepsun.com - Web: www.Mepsun.com

# Weldolet

90/10 Copper Nickel UNS C7060X

**EEMUA 234:2015 Chapter 12**  
**(Formerly EEMUA 146/6)**



Nominal Size (Inch)	Actual Size $\text{ØA1}$ (mm)	$\text{ØA2}$ (mm)	W (16 Bar) (mm)	W (20 Bar) (mm)	H (mm)	Weight (Kg)
1/2	<b>16</b>	16 to 44.5	2	2	19.05	0.07
1/2	<b>16</b>	57 to 610	2	2	17.5	0.07
3/4	<b>25</b>	25 to 44.5	2	2	22.2	0.11
3/4	<b>25</b>	57 to 610	2	2	20.6	0.11
1	<b>30</b>	30 to 44.5	2.5	2.5	27	0.18
1	<b>30</b>	57 to 610	2.5	2.5	22.2	0.18
1.1/4	<b>38</b>	38 to 44.5	2.5	2.5	30.2	0.32
1.1/4	<b>38</b>	57 to 610	2.5	2.5	25.4	0.32
1.1/2	<b>44.5</b>	44.5	2.5	2.5	33.3	0.36
1.1/2	<b>44.5</b>	57 to 610	2.5	2.5	28.6	0.36
2	<b>57</b>	57 to 76.1	2.5	2.5	38.1	0.68
2	<b>57</b>	88.9 to 610	2.5	2.5	33.3	0.68
2.1/2	<b>76.1</b>	76.1 to 108	2.5	2.5	47.6	1.4
2.1/2	<b>76.1</b>	159 to 610	2.5	2.5	44.5	1.4
3	<b>88.9</b>	88.9 to 108	2.5	2.5	47.6	1.7
3	<b>88.9</b>	159 to 610	2.5	2.5	44.5	1.7
4	<b>108</b>	108	3	3	46.8	3
4	<b>108</b>	159	3	3	52.4	3
4	<b>108</b>	219.1 to 610	3	3	49.2	6.4
6	<b>159</b>	159 to 610	3	3.5	60.3	8.9
8	<b>219.1</b>	219.1 to 610	4	4.5	69.9	12.7
10	<b>267</b>	267 to 610	4.5	5.5	77.8	17.7
12	<b>323.9</b>	323.9 to 610	5.5	7	85.7	29.5
14	<b>368</b>	368 to 610	6.5	8	88.90	31.8
16	<b>419</b>	419 to 610	7	9	93.7	41.7
18	<b>457.2</b>	457.2 to 610	8	9.5	96.8	53.2
20	<b>508</b>	508 to 610	8.5	11	115.9	68.3
24	<b>610</b>	610	9.5	13	115.9	91.2



## Marine Engineering Pipeworks Ltd.

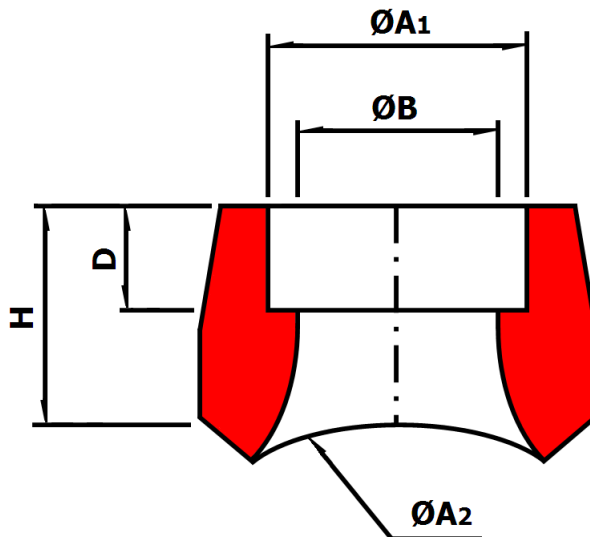
Leechmere Industrial Estate, Grangetown, Sunderland, SR2 9TE, United Kingdom  
 Tel: +44 191 521 1941 - Fax: +44 191 523 6954 - E-mail: Info@Mepsun.com - Web: www.Mepsun.com

# Socketlet

90/10 Copper Nickel UNS C7060X

**EEMUA 234:2015 Chapter 12**  
**(Formerly EEMUA 146/6)**

Also available as a Capillary fitting.



Nominal Size (Inch)	Actual Size (mm)	ØA2 (mm)	ØA1 (mm)	ØB (mm)	H (mm)	D (mm)	Weight (Kg)
1/2	<b>16</b>	25 to 44.5	16.1	12	25.4	10	0.1
1/2	<b>16</b>	57 to 914	16.1	12	23.8	10	0.1
3/4	<b>25</b>	30 to 44.5	25.1	21	26.9	13	0.13
3/4	<b>25</b>	57 to 914	25.1	21	25.4	13	0.13
1	<b>30</b>	38 to 44.5	30.1	25	33.3	13	0.22
1	<b>30</b>	57 to 914	30.1	25	28.6	13	0.22
1.1/4	<b>38</b>	57 to 914	38.1	33	33.3	13	0.35
1.1/4	<b>38</b>	57 to 914	38.1	33	33.3	13	0.35
1.1/2	<b>44.5</b>	57 to 914	44.6	39.5	30.2	13	0.5
1.1/2	<b>44.5</b>	57 to 914	44.6	39.5	30.2	13	0.5
2	<b>57</b>	76.1 to 914	57.3	52	38.1	16	0.9
2	<b>57</b>	76.1 to 914	57.3	52	38.1	16	0.9



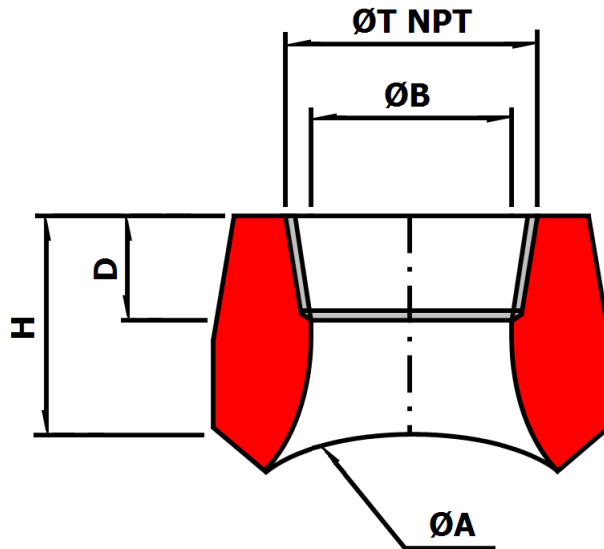
## Marine Engineering Pipeworks Ltd.

Leechmere Industrial Estate, Grangetown, Sunderland, SR2 9TE, United Kingdom  
 Tel: +44 191 521 1941 - Fax: +44 191 523 6954 - E-mail: Info@Mepsun.com - Web: www.Mepsun.com

# Threadolet

90/10 Copper Nickel UNS C7060X

**EEMUA 234:2015 Chapter 12**  
**(Formerly EEMUA 146/6)**



<b>ØT NPT (Thread, Inch)</b>	<b>ØA (mm)</b>	<b>ØB (mm)</b>	<b>H (mm)</b>	<b>D (mm)</b>	<b>Weight (Kg)</b>
<b>1/2</b>	25 to 44.5	11.74	25.4	13.5	0.1
<b>1/2</b>	57 to 914	11.74	23.8	13.5	0.1
<b>3/4</b>	30 to 44.5	15.58	26.9	14	0.13
<b>3/4</b>	57 to 914	15.58	25.4	14	0.13
<b>1</b>	38 to 44.5	20.7	33.3	17.5	0.22
<b>1</b>	57 to 914	20.7	28.6	17.5	0.22
<b>1.1/4</b>	57 to 914	29.5	33.3	18	0.35
<b>1.1/4</b>	57 to 914	29.5	33.3	18	0.35
<b>1.1/2</b>	57 to 914	34.02	30.2	18.5	0.5
<b>1.1/2</b>	57 to 914	34.02	30.2	18.5	0.5
<b>2</b>	76.1 to 914	42.82	38.1	19	0.9
<b>2</b>	76.1 to 914	42.82	38.1	19	0.9



## Marine Engineering Pipeworks Ltd.

Leechmere Industrial Estate, Grangetown, Sunderland, SR2 9TE, United Kingdom  
 Tel: +44 191 521 1941 - Fax: +44 191 523 6954 - E-mail: Info@Mepsun.com - Web: www.Mepsun.com

# Products And Services

## Products

As well as the EEMUA range of copper nickel 90/10 included in this brochure , we also stock the following:

- DIN /MARINE standard copper nickel 90/10 tube , fittings and flanges.  
A full range from 6mm up to 508mm, 10 and 14 bar rated.  
Including DIN STANDARD backing flanges.
- Copper nickel 90/10 sheet and plate. (EEMUA/DIN dual certified)
- Copper nickel 90/10 bar (BS2874, EN12163, ASTM B151, EEMUA)
- Copper nickel 90/10 condenser and heat exchanger tubes
- Copper nickel 90/10 pressfit tube and fittings
- Copper nickel 90/10 nominal bore pipe and fittings
- Aluminium brass ("Yorkalbro") tube, fittings and flanges.  
An extensive range from 8mm up to 508mm to Marine standards.
- Aluminium brass condenser and heat exchanger tubes.
- Aluminium brass sheet.
- Aluminium brass round bar.
- Aluminium bronze twin ferrule compression fittings.
- Brass single ferrule compression fittings.
- Brass round and hex bar
- MHD and GHD fittings.
- Gunmetal flanges and fittings.
- Hermetic bulkhead fittings.
- Norma connect couplings
- JIS steel flanges and bronze valves.
- Heating coil tube, fittings and repair couplings 11TU, 11SU.
- Viking Johnson couplings.
- Stainless and carbon steel pipe, fittings and flanges.



## **Marine Engineering Pipeworks Ltd.**

Leechmere Industrial Estate, Grangetown, Sunderland, SR2 9TE, United Kingdom  
Tel: +44 191 521 1941 - Fax: +44 191 523 6954 - E-mail: [Info@Mepsun.com](mailto:Info@Mepsun.com) - Web: [www.Mepsun.com](http://www.Mepsun.com)

# **Products And Services**

## **Services**

### **Fabrication**

We are able to manufacture in-house from your drawings, sketches or to jig from a sample, bespoke pipework in non-ferrous and ferrous materials using our fully coded welders and experienced design team.

Our welders are coded to Offshore and Marine standards for the production of copper nickel and stainless steel pipework to 100% x-ray standard. We can provide all necessary certification and testing in association with this type of high quality work and we are certified to ISO 9001 2008 to Lloyds' Register Quality Assurance.

All fabrication enquiries are welcome and if we cannot manufacture ourselves we will point you in the right direction.

### **Machining**

We have an in-house machine shop able to produce special components from stock bar, plate or pipe from drawings or samples.

We manufacture for example threaded, capillary, socket weld and butt weld fittings and flanges in all materials, as well as valve components and transducer housings.

We are happy to produce both small one off lathe machined items and mass produced CNC machined items to match your requirements.

### **Site Installation**

We have an experienced team of pipe fabrication and installation technicians, which includes coded welders, pipefitters, platers, mechanical fitters and supervision to suit.

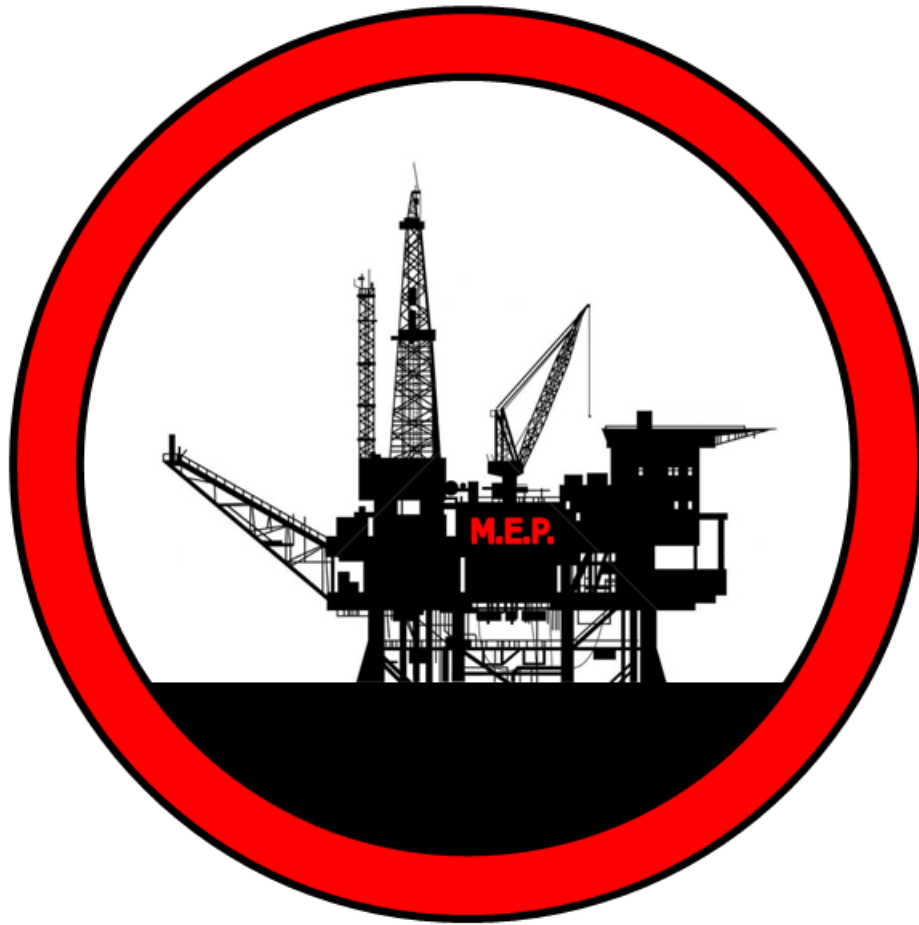
The team is particularly established within the Marine Industry and has completed many large retrofits and new system installations over the last forty years.

For more details please contact our sales department;  
Philip Harper, Gary Harper and Alex Green.



## **Marine Engineering Pipeworks Ltd.**

Leechmere Industrial Estate, Grangetown, Sunderland, SR2 9TE, United Kingdom  
Tel: +44 191 521 1941 - Fax: +44 191 523 6954 - E-mail: [Info@Mepsun.com](mailto:Info@Mepsun.com) - Web: [www.Mepsun.com](http://www.Mepsun.com)



# **Marine Engineering Pipeworks Ltd.**

**Leechmere Industrial Estate  
Toll Bar Road  
Grangetown  
Sunderland  
Tyne & Wear  
SR2 9TE**

**Tel.: +44 (0) 191 521 1941  
Fax: +44 (0) 191 523 6954  
E-mail: [Info@mepsun.com](mailto:Info@mepsun.com)  
Website: [www.mepsun.com](http://www.mepsun.com)**