

Marketing Sales Release

New Product Release

Market: Worldwide

Product Name: GS Series System – 200 HS Antenna

General Description:

GSSI is proud to announce the new 200 MHz (200 HS) antenna, the first of the next-generation high-performance GS Series, designed for applications that require deeper depth penetration. The new 200HS antenna serves as the foundation for the GS Series, which is ideal for geophysical, geotechnical, or environmental applications that require high reliability under challenging survey conditions.

The newly designed 200 HS antenna is paired with the HS Module and wirelessly connects to a Panasonic Toughpad G1 or SIR 4000 control unit. The wireless HS Module incorporates system electronics, an internal GPS, and connectivity ports in an IP-65 rated housing. The 200 HS uses GSSI's patented HyperStacking technology, which improves signal to noise performance and increases the antenna depth penetration, nearly double the conventional GPR antenna designs, under all soil conditions.

The GS Series features a modular design that allows the user to select which controller best suits their needs; the rugged SIR 4000 combined with our new Wi-Fi Module, or the Panasonic G1. Both controller options provide different advantages to the customer. The SIR 4000 builds on the same user interface and menu options that customers are familiar with. The Panasonic G1 features a GIS map mode that will display GPR data collected on the left side of the screen and a location map on the right side of the screen.

Designed alongside the 200 HS are several survey accessories to enhance the ease of use in data collection. The antenna comes with a tow strap with various grip options. Optional accessories include a GPS mount plate and a four-piece wheel kit that will decrease the wear of the antenna on prepared surfaces such as grass and asphalt.

The 200 HS is FCC, RSS-220, and CE certified.

Special Features Include:



Controller Options –The GS Series system can be controlled with the SIR 4000 or our new GS Series tablet User Interface. The system uses a wireless connection between the tablet and/or SIR 4000 to the antenna. In areas where wireless connectivity is restricted, the system can be connected via a digital control cable for the SIR 4000 or an ethernet cable for the tablet.



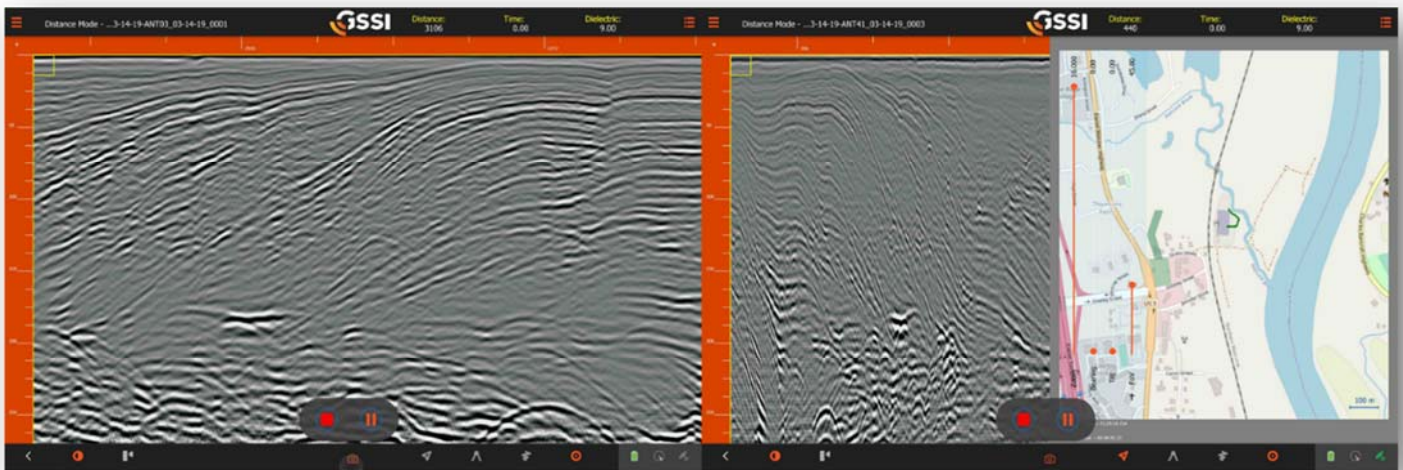
HS Module – This module is the center piece of the new system and is packed with features to drive the GS series antennas. These features include long range Wi-Fi antennas, Bluetooth functionality, a built in GNSS GPS antenna and additional accessory connection ports.



SIR 4000 Wireless Module – This module allows users who already own the SIR 4000 to connect wirelessly to the GS Series system. Set up time is very simple, just connect the cable to the digital connector port and use a screwdriver to mount the Wi-Fi module underneath the mounting plate on the back of the SIR 4000.



New GS Series User Interface– Innovative new user interface (UI) designed to drive the GS Series antennas. This UI takes full advantage of touchscreen capabilities and has easily accessible menus for data manipulation.



New UI features – The new app-based UI also features on the fly pinch zoom along with a new GIS map mode that tracks and displays the user's position on a base map.



Designed for Tough Field Environments – The GS Series product line was specifically designed, and laboratory tested to be IP 65 rated. This means that dusty, wet and muddy conditions will not prevent your customers from collecting data.



GPS Support – The new GS Series system is designed to be fully compatible with many different types of GPS systems. The HS Module not only has a built-in GPS but also allows for Bluetooth connectivity to an external GPS when higher GPS accuracy is required. As an accessory, we offer a GPS pole mount (pole not included) for attaching survey poles with external GPS systems.



Field Portable Design – The new 200 HS antenna incorporates accessory wheels to reduce wear of the skid plate and allow the antenna to move more easily over tough ground conditions.



Accessory Transit Case – This custom foam Pelican Case is designed for the GS Series accessories. This transit case can hold the HS Module, Panasonic Toughpad G1, SIR 4000 Wi-Fi Module, wheel kit, tow handle, batteries and battery charger.

Anticipated Questions:

What tablet is being used to run the GS Series software?

The tablet being sold is the Panasonic FZ-G1.

How much data storage does the Panasonic FZ-G1 have?

This tablet has 256 GB of internal data storage. For more specs please review the brochure.

Can the user provide their own tablet?

Assuming the user meets the minimum hardware specification for the GS Series software this is possible. The software and minimum specifications can be found on the GSSI technical support website.

Does the 200 HS antenna have a built-in survey wheel?

No, the 200 HS is designed to work with the Model 620 survey wheel.

Can any other GSSI antennas be connected to the tablet?

No, the GS Series tablet user interface can only drive the 200 HS antenna.

Can I connect my GPS to the system?

The GS Series system uses Bluetooth connection to communicate with external GPS systems. It does not support wired connections such as USB and/or Serial connections.

What type of GPS pole can I use with 200 HS antenna?

The 200 HS was designed to accommodate a 3 ft. (1 m) pole using a 5/8 x 11 male threaded end.

Does the system come with a transit case?

No, a custom Pelican transit case is available as an accessory. Note that the case does not fit the antenna.

How will our customers acquire the new software updates for the GS Series?

When new software updates become available, customers will be able to download the latest software version from the GSSI technical support website.

What is going to happen to the existing 200 MHz antenna?

There are no plans to obsolete the current Model 50200/200 MHz antenna.

Is RADAN 7 required to read GS Series data files?

Yes. However, the latest version is required to view and process the data. Existing users must update their software to the latest version from the tech support website (at no cost).

What is the status of the FCC, CE and RSS-220 certifications for the GS Series 200 HS antenna?

The GS Series 200 HS antenna has received FCC, CE and RSS-220 certifications.

What is included in each of the three GS Series Kits?

GS Series – 200 HS Tablet Kit

FGGS/TABLETG1/50200 HS

- Panasonic FZ-G1 Toughpad tablet
- Model 200 HS (200 MHz HyperStacking) antenna
- HS Module
- Lithium-ion battery (2)
- Dual-bay battery charger
- GS Series Manual
- Rugged Ethernet Cable – 2M

GS Series – 200 HS SIR 4000 Kit

FGGS/4000/50200 HS

- SIR 4000
- Model 200 HS (200 MHz HyperStacking) antenna
- HS Module
- Wi-Fi Module
- Lithium-ion battery (4)
- Dual-bay battery charger
- GS Series Manual

GS Series – 200 HS Upgrade Kit for SIR 4000 customers

FGGS/UPKIT/50200 HS

- Model 200 HS (200 MHz HyperStacking) antenna
- HS Module
- Wi-Fi Module
- Lithium-ion battery (2)
- Dual-bay battery charger
- GS Series Manual

What Accessories and Replacement Parts are available?

HS Module	FGHSMODULE
SIR 4000 Wi-Fi Module	FG4KWIFI
Model 50200, 200 HS Wireless Antenna	FGMOD50200HS
Skid replacement kit for 200 HS antenna	FG200 HS-SKID
GPS Pole Mount with 5/8 x 11 male threaded end	FGHS-GPSMNT
Panasonic ToughPad G1 with GS Series Software	FGHSTABLET/PANAG1
Transit Case GS Series accessories	FGTC-HSM
GS Series Wheel Kit	FGHS-WHEELKIT
Tow strap (replacement)	FGHS-TOWSTRAP

Packaging Information: Please refer to the Price list

Lead time: 4 weeks

Pricing: Please refer to the Price list

Warranty: Standard GSSI warranty applies – See Term and Conditions

Date: October 17, 2019

Collateral Material:

- GS Series Brochure, GS Series Manual, Geo Booklet
- Marketing photos available on Dropbox.com - [click here](#)

Contact: Ken Corcoran - Product Marketing Manager

Corcorank@geophysical.com