

CONTA-LABEL
MARKING SYSTEM **TTP**Card



Overview

Overview	2
Our company	3
Thermal-transfer printer TTPCard	4
Printing materials	5
Labelling software CONTASign PRO	6
Terminal markers PC-SB .../ PC- BSTR	8
Terminal markers for other manufacturers PC-CPM	9
Wire and cable markers PVC-TPMF... and PC-TPMF	12
Wire and cable markers PC-TDM	13
Wire and cable markers PC-TDMO	14
Wire and cable markers PVC-ETF and PC-ETF-HF	15
Wire and cable markers PVCF-KMP	16
Device and installation markers PC-SPM	17
Device and installation markers PVC-TAP	18
Device and installation markers PVC-TAP-CCS	19
Device and installation markers PVC-PTS	20
Device and installation markers PVC-TAPW	21
Device and installation markers PVC-TAA	22
Device and installation markers PVC-PLC	24
Device and installation markers PVC-VRT-R	25
Device and installation markers PVC-VRT-A	26
Device and installation markers PVC-VRT-RH	27
Device and installation markers PVC-VRT-AH	28
Cable marker sleeves KH-PVC	29
Cable marker sleeves KH-PVC-HF (halogen-free)	30
Holder GSU-H	31
Holder GST-H	32
Profiles PS9 and PS15	33
Selection lists of terminal markers	34

Our company

Founded and kept in the family since 1977: **CONTA-CLIP** is an owner-operated company that is a mid-sized global player. Users of electrical and electronic connectivity components have come to trust us for our reliable products. They also trust in our wide-reaching competence within the market and industry which has evolved over many years. In the years since our company was founded, we have evolved from a manufacturer to an innovator.

Our employees are connectivity specialists coming from a wide variety of backgrounds. They understand the specific problems, requirements and challenges of our customers. This ensures communication among equals. We then invest our gains directly into maintaining a modern and efficient production process. This allows us to maintain the most modern machinery at our facilities. We develop and produce the tooling ourselves. We neither make nor accept any compromise in the quality of materials used in our products.

Our top-class products are supported by this interplay between top-class men and machinery. We have also designed our range of services to align with customer needs. We develop electronics, assemble terminal rails, take care of component labelling, and deliver completely populated housings when needed – totally customized and expedited.

Our passion and concern for our customers' challenges does not end after we've delivered our solution. **CONTA-CLIP** customer representatives are always ready to offer their support to the customer, because service and support are our top priorities.

You can learn more about product innovations, trade fair dates, press releases, and more at our official **CONTA-CLIP** web site.

If you want to make sure you do not miss any news, subscribe with no obligation to our **CONTA-CLIP** e-mail newsletter.

www.conta-clip.com



Thermal-transfer printer TTPCard

A system that fulfils a wide variety of marking and labelling requirements: The **TTPCard** thermal-transfer printer features excellent versatility, usability, speed and compact dimensions. The system has been designed for labelling facilities and electrical cabinets. It takes care of all your labelling and marking requirements inside and outside of the electrical cabinet. Our printers and printing materials comply with the toughest international standards, including:

- DIN EN ISO 4892-2 UV resistance (standard test: 500 hours)
- CEI 16-7 Thermal stability
- CEI 16-7 Print integrity
- IEC 61439-1:2009 pt. 10.2.7
- CEI 23-11 (CEI EN 61058-1)
- CEI en 61010-1 (VDE 0411-1)

All markers mentioned in the catalogue can be labelled using the Windows "True Type" fonts. Bar codes and QR codes can also be printed.

Features:

- Reliable printing technology (thermal transfer)
- Maintenance-free, low-noise operations
- Stable and quick labelling
- Easy to operate
- Compact dimensions
- Up to 500 markers per minute



Type	Cat. no.	Included in delivery
TTPCard	28000.0	Power cable, USB cable, CONTASign PRO software, dust cover, black thermal transfer film

Type	Cat. no.	Accessories
Film TTPCard BK	28010.4	Thermal transfer film, black
Film TTPCard BU	28010.5	Thermal transfer film, blue
Film TTPCard RD	28010.9	Thermal transfer film, red
Film TTPCard GN	28010.1	Thermal transfer film, green
Film TTPCard SI	28010.0	Thermal transfer film, silver
Film TTPCard WH	28010.7	Thermal transfer film, white
TTPCard cleaning set	28043.0	Cleaning set (plate, cleaning cloth, cleaning spray)
TTPCard cleaning cloth	28044.0	Five cleaning cloths
TTPCard cleaning spray	28045.0	Cleaning spray

Printing materials

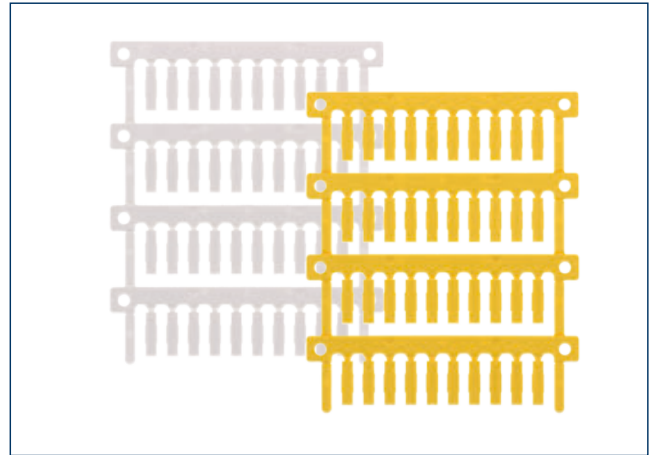
Various types of plastic markers can be printed on using the TTPCard.

PC series

All markers in the PC series are produced in card format. The individual solid markers can easily be separated along the predetermined card breakage points.

Material:

- Polycarbonate
- Self-extinguishing UL94 V-0
- Temperature range: -40°C to +130°C
- Halogen-free, silicone-free
- High dimensional stability with very good mechanical characteristics



PVC series

All markers in the PVC series are stamped in card format. The individual markers can easily be separated along the predetermined card breakage points. Self-adhesive markers, markers with holes for direct mounting, and markers for holders are also available.

Material:

- PVC
- Self-extinguishing UL94 V-0
- Temperature range: -30°C to +70°C
- Silicone-free



PVCF series

The self-adhesive labels are packaged on cards and glued to a substrate. After they are printed, the individual labels can be easily perforated for use.

Material:

- PVC film
- Self-extinguishing UL 94 V-0
- Temperature range: -30°C to +70°C
- Processing temperature: +10°C to +40°C
- Silicone-free



Labelling systems and software – Labelling software CONTA-Sign PRO

The **CONTA-Sign PRO** Windows-compatible software has been specially designed for the professional labelling of terminal blocks, devices, conductors, cables, facilities and electrical cabinets.

All of **CONTA-CLIP's PC, PVC** and **PVCF** markers can be printed on using this software and the **TTPCard** thermal transfer printer. Text, bar codes and drawings can easily be created or imported in the software. **CONTA-Sign PRO** is available in 11 languages.

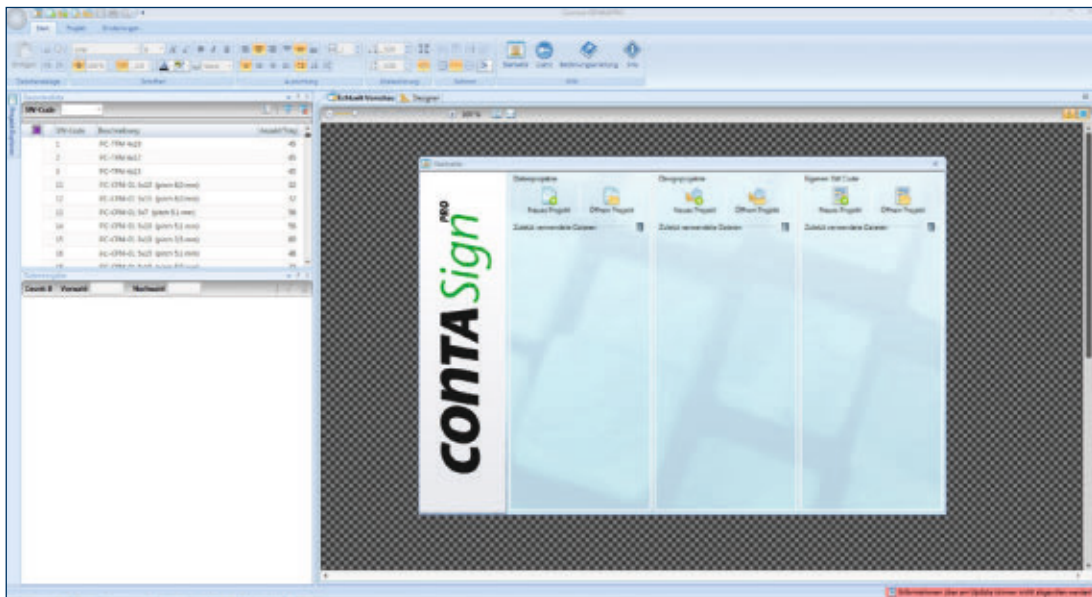
Features:

- Prints on terminal blocks, cables, plugs, connectors, switches, components, markers for control panels and self-adhesive labels
- Data can be input directly to the markers or using an editor
- More than ten different types of numbers available
- Data can be imported from Excel, csv, txt, db and other standard formats
- Compatible with Matrix, ACS and Simplo, Import Spac, EPLAN, IGE-XAO, Excel, etc.
- Standard Windows fonts and special characters (e.g. Chinese and Cyrillic) can be used
- Creation of custom marker layouts
- Vector printing, drawings and clipart
e.g. * .wmf, * .jpeg, * .bmp
- Bar codes, 2-D bar codes, QR codes
- Free updates
- Integrated help function

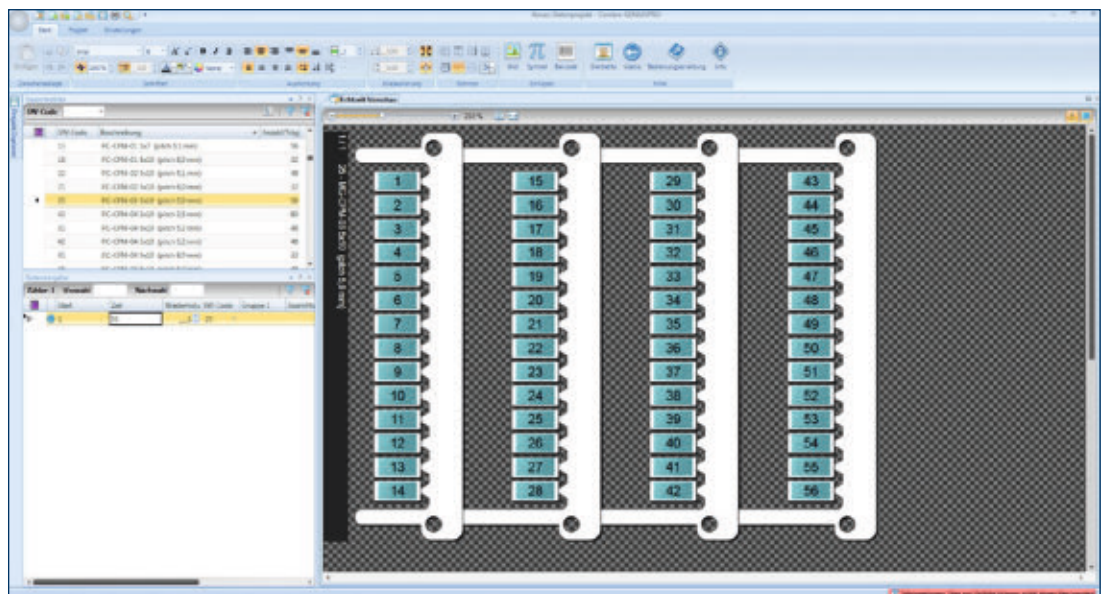


System requirements	
CPU	Pentium®Dual core inside TM
RAM	2 GB RAM
Hard disk space	2 GB
Interface ports	USB port
Screen resolution	1280 x 1024
Operating system	Windows XP (SP3), 7, 8, 8.1 and 10
Peripherals	Keyboard and mouse
Languages	German, English, French, Italian, Spanish, Portuguese, Czech, Dutch, Chinese, Japanese, Russian

Labelling systems and software – Labelling software CONTA-Sign PRO



Projects can easily be created



Markers can be easily input in series

Terminal markers PC-SB... / PC-BSTR...

The **SB** and **BSTR** terminal markers are a multi-functional marking system used to label **CONTA-CLIP** terminal blocks.

PC-SB is used to label all **CONTA-CLIP** terminal blocks with their corresponding terminal widths.

PC-BSTR is the ideal solution for longer strings of characters. The **PC BSTR 5/...MI** variants are fitted with a centrally positioned foot that is used when the standard **PC-BSTR** markers cover the cross-connection channel or wire entry.

The blank cards can be easily labelled using the **TTPCard** thermal-transfer printer.



Characteristics	
Material	Polycarbonate
Temperature range	-40°C to +130°C
Flamm. class acc. to UL 94	V-0
Features	Halogen-free, silicone-free
Colour variants	⑦

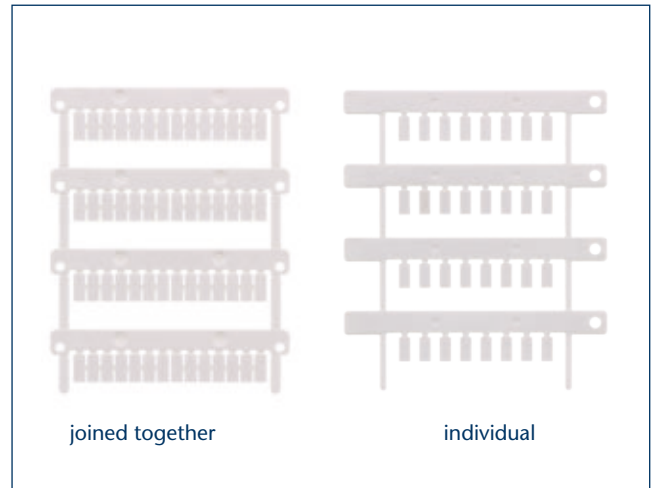
Type	Cat. no.	Colour	Qty.	Size WxL, mm	Application	Markers per card	Cat. no. Inlay	SW Code
PC-SB 3.5X5/56 WH*	28350.7*	White	1120	3.5 x 5	joined together	56	28366.0	401
PC-SB 5X5/48 WH	28342.7	White	960	5 x 5	joined together	48	28358.0	402
PC-BSTR 5x10/48 MI WH*	28352.7*	White	960	5 x 10	joined together	48	28367.0	405
PC-BSTR 5X10/48 WH*	28346.7*	White	960	5 x 10	joined together	48	28362.0	406
PC-BSTR 5X12/48 WH*	28345.7*	White	960	5 x 12	joined together	48	28361.0	407
PC-SB 6X5/40 WH*	28343.7*	White	800	6 x 5	joined together	40	28359.0	403
PC-BSTR 6X12/40 WH*	28344.7*	White	800	6 x 12	joined together	40	28360.0	408
PC-SB 8X5/32 WH*	28347.7*	White	640	8 x 5	joined together	32	28363.0	404
PC-BSTR 8X12/32 WH*	28348.7*	White	640	8 x 12	joined together	32	28364.0	409
PC-BSTR 10X12/24 WH*	28349.7*	White	480	10 x 12	joined together	24	28365.0	410

* Marker is pending.

Terminal markers for PC-CPM

The **PC-CPM** multi-markers can be used to label terminal blocks from Phoenix Contact, Wago, Weidmüller, Allen-Bradley, Klemmsan, Morsettitalia, Woertz, ConnectWell, ABB Entelec, Siemens, Cabur, Wieland, Telemecanique and Legrand.

The blank cards can be easily labelled using the **TTPCard** thermal-transfer printer.



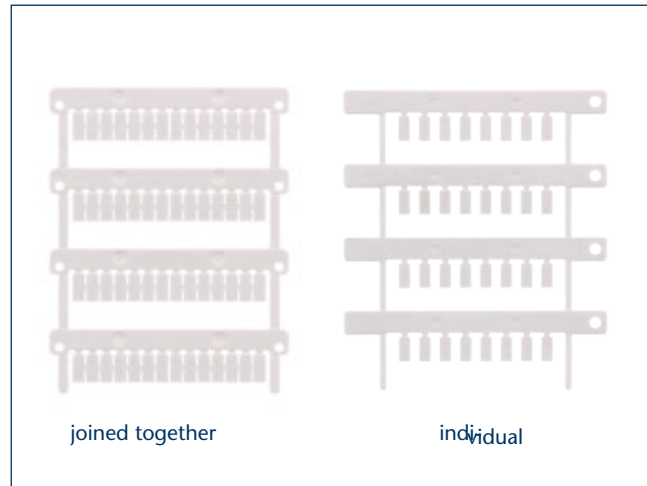
Characteristics	
Material	Polycarbonate
Temperature range	-40°C to +130°C
Flamm. class acc. to UL 94	V-0
Features	Halogen-free, silicone-free
Colour variants	⑦

Type	Cat. no.	Colour	Qty.	Size WxL, mm	Application	Markers per card	Cat. no. Inlay	SW Code
Markers for Weidmüller, ABB, Wago, Allen-Bradley, Klemmsan, Morsettitalia, Woertz, Connectwell								
PC-CPM-01 E 3X10/80 WH	28237.7	White	2000	3x10	individual	80	28042.0	15
PC-CPM-01 E 5X7/56 WH	28238.7	White	1960	5x7	individual	56	28023.0	13
PC-CPM-01 E 5X10/56 WH	28239.7	White	1960	5x10	individual	56	28042.0	14
PC-CPM-01 E 5X15/48 WH	28240.7	White	1960	5x15	individual	48	28042.0	16
PC-CPM-01 E 8X10/32 WH	28241.7	White	1120	8x10	individual	32	28042.0	18
Markers for Weidmüller WDK & WDU, Allen-Bradley, Klemmsan, ABB, Wago, Woertz,								
PC-CPM-02 E 5X10/48 WH	28245.7	White	1680	5x10	individual	48	28042.0	22
Markers for Wago, ABB, Cabur, Phoenix, Connectwell								
PC-CPM-03 E 5X10/56 WH	28247.7	White	1960	5x10	individual	56	28042.0	25
PC-CPM-03 Z 5X10/56 WH	28351.7	White	1960	5x10	joined together	56	28042.0	25
Markers for Wago, ABB, Cabur, Phoenix (UT, UK), Siemens 8WH, Harting								
PC-CPM-04 E 3X10/80 WH	28249.7	White	2000	3x10	individual	80	28042.0	43
PC-CPM-04 E 5X10/48 WH	28250.7	White	1680	5x10	individual	48	28042.0	42
PC-CPM-04 5X10/48 WH	28251.7	White	1680	5x10	joined together	48	28042.0	31
PC-CPM-04 6X10/48 WH	28252.7	White	1344	6x10	joined together	48	28042.0	45
PC-CPM-04 8X10/32 WH	28253.7	White	1120	8x10	joined together	32	28042.0	48
Markers for Wieland, Telemecanique, Legrand, Merlin Gerin (MCB ST)								
PC-CPM-05 E 5X10/56 WH	28256.7	White	1960	5x10	individual	56	28024.0	51
PC-CPM-05 5X10/56 WH	28257.7	White	1960	5x10	joined together	56	28024.0	51

Terminal markers for PC-CPM

The **PC-CPM** multi-markers can be used to label terminal blocks from Phoenix Contact, Wago, Weidmüller, Allen-Bradley, Klemsan, Morsetitalia, Woertz, ConnectWell, ABB Entelec, Siemens, Cabur, Wieland, Telemecanique and Legrand.

The blank cards can be easily labelled using the **TTPCard** thermal-transfer printer.



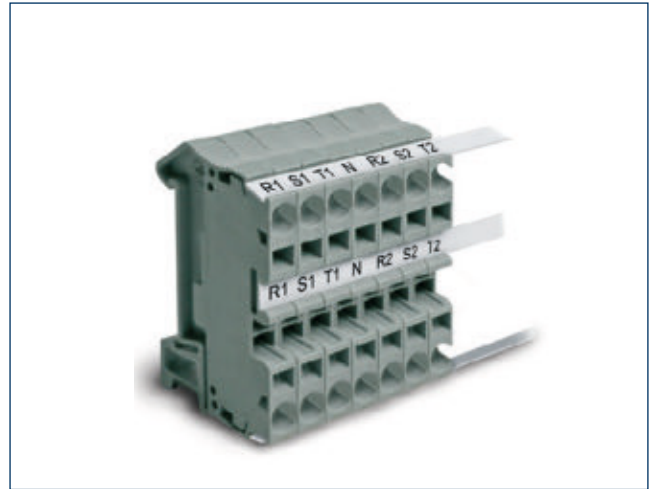
Characteristics	
Material	Polycarbonate
Temperature range	-40°C to +130°C
Flamm. class acc. to UL 94	V-0
Features	Halogen-free, silicone-free
Colour variants	⑦

Type	Cat. no.	Colour	Qty.	Size WxL, mm	Application	Markers per card	Cat. no. Inlay	SW Code
Markers for Siemens 8WA terminals								
PC-CPM-06 E 5X10/44 WH	28258.7	White	1540	5x10	individual	44	28025.0	61
Markers for Phoenix Contact (ST, STU, STS, STI, STN, STTB), Siemens (8WH), Schlegel								
PC-CPM-07 E 5X10/48 WH	28259.7	White	1680	5x10	individual	48	28042.0	71
Markers for Legrand Viking 3								
PC-CPM-09 5X10/56 WH	28260.7	White	1960	5x10	joined together	56	28026.0	92
Markers for Cabur, Connectwell								
PC-CPM-10 E 5X12/48 WH	28261.7	White	1680	5x12	individual	48	28027.0	101
Markers for Allen-Bradley, Weidmuller WDU, IMO, Omron, Finder								
PC-CPM-11 E 6X12/48 WH	28262.7	White	1680	6x12	individual	48	28042.0	106
Markers for Wago, Top-Job, ABB, Cabur, Weimüller, Connectwell, Morsetitalia, Beckhoff I/O								
PC-CPM-12 4.2X6/56 WH	28264.7	White	1960	4.2x6	joined together	56	28024.0	111
PC-CPM-12 4.2X9/56 WH	28265.7	White	1960	4.2x9	joined together	56	28024.0	112
Markers for ABB (SNK, ZS)								
PC-CPM-13 5X12/56 WH	28266.7	White	1960	5x12	joined together	56	28028.0	113
PC-CPM-13 E 6X12/48 WH	28267.7	White	1680	6x12	individual	48	28028.0	114

Terminal markers for PVC-CPMF...

The **PVC-CPMF**, **PVC-CPMFA** and **PVCF-CPMFA** multi-markers can be used to label terminal blocks from Wago, ABB, Phoenix and Siemens.

The blank cards can be easily labelled using the **TTPCard** thermal-transfer printer.



Characteristics	Type: PVC...	Type: PVCF...
Material	PVC	PVC film
Temperature range	-30°C to +60°C	-30°C to +70°C
Flamm. class acc. to UL 94	V-0	V-0
Features	Silicone-free	Silicone-free
Colour variants	⑦	⑦

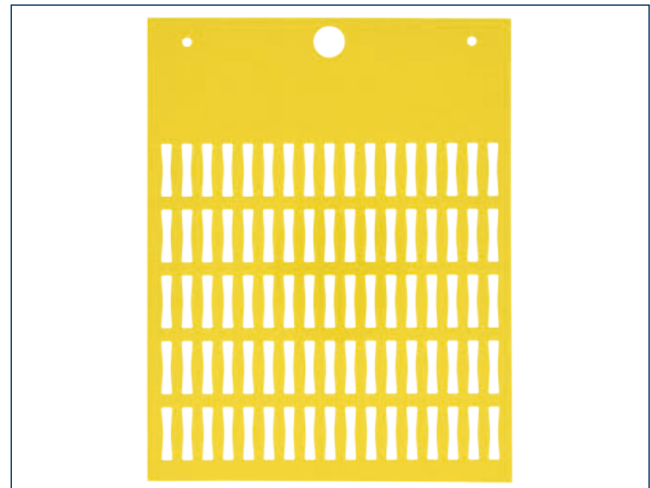
Type	Cat. no.	Colour	Qty.	Size WxL, mm	Application	Strips per card	Cat. no. Inlay	SW Code
Markers for Wago 264								
PVC-CPMF 4.6X118/6 WH	28268.7	White	300	4.6x118	Strips	6	28041.0	547
Markers for ABB D..								
PVC-CPMF 5.2X105/20 WH	28269.7	White	1000	5.2x105	Strips	20	28041.0	551
Markers for Phoenix ST, Siemens 8WH								
PVC-CPMF 6.3X105X0.5/15 WH	28270.7	White	750	6.3x105	Strips	15	28041.0	553
Markers for Phoenix (UT, UK), Siemens 8WH								
PVC-CPMF 6.3X105X0.3/15 WH	28271.7	White	750	6.3x105	Strips	15	28041.0	553
Markers for ABB M6/9EE, attached from the front								
PVC-CPMF 7.6X105/12 WH	28272.7	White	600	7.6x105	Strips	12	28041.0	552
Markers for Phoenix PT								
PVC-CPMF 9.8X105/11 WH	28273.7	White	550	9.8x105	Strips	11	28041.0	549
Markers for ABB M6/9EE, attached from the side								
PVC-CPMF 10x105/10 WH	28332.7	White	500	10x105	Strips	10	28041.0	530
Markers for Wago (2001, 2002, 2004, 2006, 2010 2016)								
PVC-CPMF 10.5X105/10 WH	28274.7	White	500	10.5x105	Strips	10	28041.0	354
Markers for ABB SNK terminals								
PVC-CPMFA K 12X105/8 WH	28333.7	White	400	12x105	Self-adhesive strips	8	28041.0	932
Markers for custom designs								
PVCF-CPMFA K 10X105/10 WH	28334.7	White	100	10x105	Self-adhesive strips	10	28041.0	530
Markers for PCB terminals								
PVCF-VYB 4X105/10 WH	28275.7	White	500	4x105	Strips	10	28041.0	556
Markers for Weidmüller ABB								
PVCF-VYB 5.2X105/20 WH	28276.7	White	1000	5.2x105	Strips	20	28041.0	557
Markers for Wago 260, 261, 262								
PVCF-VYB 7X105/14 WH	28277.7	White	700	7x105	Strips	14	28041.0	558

Wire and cable markers PVC-TPMF... and PC-TPMF

The **PVC TPMF** and **PC-TPMF** labelling markers are used to label cables, sheaths, tubes, conductors and components. After they are separated, the markers can be inserted in the marker holders.

- The sleeve is easier to attach to the wire because of the special bellows shape of the cable marker sleeve.
- Combined use of the **PVC-TPMF / PC-TPMF** and the **KH-PVC** or **KH-PVC-HF** cable marker sleeves guarantees that your labelling is properly protected against environmental influences.
- Oval-shaped pocket makes the labels easy to insert before or after installation.
- The elastic pocket both protects and secures the marker.

The blank cards can be easily labelled using the **TTPCard** thermal-transfer printer.



Characteristics	PVC-TPMF...	PC-TPMF-HF
Material	PVC	Polycarbonate
Temperature range	-30°C to +60°C	-40°C to +130°C
Flamm. class acc. to UL 94	V-0	V-0
Features:	Silicone-free	Halogen-free, silicone-free
Colour variants		⑦ ⑧

Type	Cat. no.	Colour	Qty.	Size WxL, mm	Markers per card	Cat. no. Inlay	SW Code
PVC-TPMF 4X12 WH	28100.7	White	4000	4x12	80	28041.0	505
PVC-TPMF 4X12 YE	28100.8	Yellow	4000	4x12	80	28041.0	505
PVC-TPMF 4X15 WH	28101.7	White	4000	4x15	80	28041.0	503
PVC-TPMF 4X15 YE	28101.8	Yellow	4000	4x15	80	28041.0	503
PVC-TPMF 4X20 WH	28102.7	White	1600	4x20	64	28041.0	504
PVC-TPMF 4X20 YE	28102.8	Yellow	1600	4x20	64	28041.0	504
PVC-TPMF 4X30 WH	28103.7	White	1200	4x30	48	28041.0	509
PVC-TPMF 4X30 YE	28103.8	Yellow	1200	4x30	48	28041.0	509
PC-TPMF-HF 4X12 WH	28104.7	White	4000	4x12	80	28041.0	505
PC-TPMF-HF 4X12 YE	28104.8	Yellow	4000	4x12	80	28041.0	505
PC-TPMF-HF 4X15 WH	28105.7	White	4000	4x15	80	28041.0	503
PC-TPMF-HF 4X15 YE	28105.8	Yellow	4000	4x15	80	28041.0	503
PC-TPMF-HF 4X20 WH	28106.7	White	1600	4x20	64	28041.0	504
PC-TPMF-HF 4X20 YE	28106.8	Yellow	1600	4x20	64	28041.0	504
PC-TPMF-HF 4X30 WH	28109.7	White	1200	4x30	48	28041.0	509
PC-TPMF-HF 4X30 YE	28109.8	Yellow	1200	4x30	48	28041.0	509

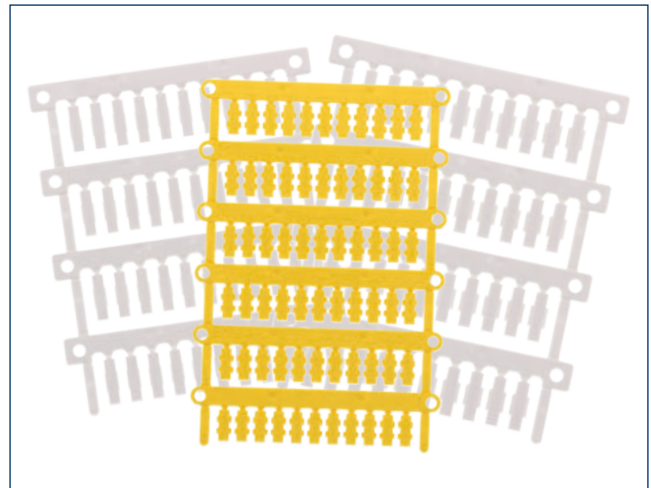
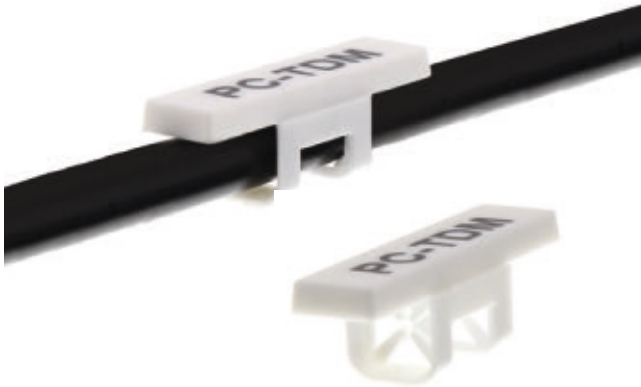
Refer to page 30 for cable marker sleeves.

Wire and cable markers PC-TDM

Labelling markers from the **PC-TDM** series can be pushed directly onto the wires without using sleeves.

Two rings with internal teeth are used to ensure that the marker is attached securely to the wire. This enables usage on wires with varying diameters.

The blank cards can be easily labelled using the **TTPCard** thermal-transfer printer.



Characteristics	Type: PC-TDM-01	Type: PC-TDM-02
Material	Polycarbonate	Polycarbonate
Temperature range	-40°C to +130°C	-40°C to +130°C
Flamm. class acc. to UL 94	V-0	V-0
Features:	Halogen-free, silicone-free	Halogen-free, silicone-free
Application		
Cross-section, mm ² **	0.5 - 1.5	1 - 6
Outer diameter of insulation, mm	1.6 - 3.25	2 - 4.4
Colour variants	⑦ ⑧	⑦ ⑧

Type	Cat. no.	Colour	Qty.	Size WxL, mm	Markers per card	Wire cross-section, mm ² **	Outer diameter of insulation, mm	Cat. no. Inlay	SW Code
PC-TDM-01 4X12 WH	28110.7	White	1320	4x12	66	0.5 - 1.5	1.6 - 3.25	28021.0	121
PC-TDM-01 4X12 YE	28110.8	Yellow	1320	4x12	66	0.5 - 1.5	1.6 - 3.25	28021.0	121
PC-TDM-01 4X16 WH	28111.7	White	800	4x16	40	0.5 - 1.5	1.6 - 3.25	28022.0	123
PC-TDM-01 4X16 YE	28111.8	Yellow	800	4x16	40	0.5 - 1.5	1.6 - 3.25	28022.0	123
PC-TDM-02 4X12 WH	28112.7	White	1056	4x12	66	1 - 6	2 - 4.4	28021.0	122
PC-TDM-02 4X12 YE	28112.8	Yellow	1056	4x12	66	1 - 6	2 - 4.4	28021.0	122
PC-TDM-02 4X16 WH	28113.7	White	640	4x16	40	1 - 6	2 - 4.4	28022.0	124
PC-TDM-02 4X16 YE	28113.8	Yellow	640	4x16	40	1 - 6	2 - 4.4	28022.0	124

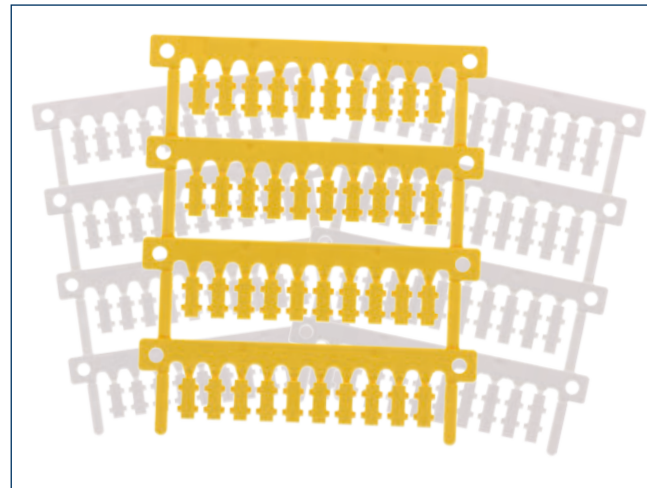
** = This specified cross-section is a guideline. Wires with the same cross-section may have different outer diameters. Therefore, we recommend using the diameter as the reference value.

Wire and cable markers PC-TDMO

Labelling markers from the **PC-TDMO** series can be snapped directly onto to a wire that is already connected.

The snap-in foot has a spring force which ensures a reliable attachment for the entire range of cross-sections.

The blank cards can be easily labelled using the **TTPCard** thermal-transfer printer.



Characteristics	
Material	Polycarbonate
Temperature range	-40°C to +130°C
Flamm. class acc. to UL 94	V-0
Features	Halogen-free, silicone-free
Colour variants	⑦ ⑧

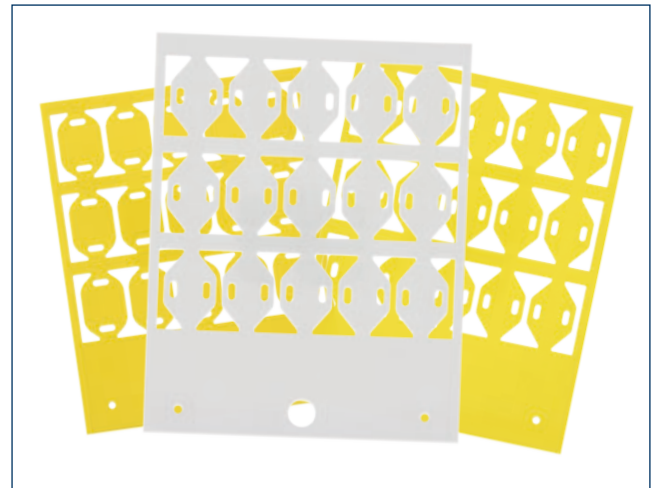
Type	Cat. no.	Colour	Qty.	Size WxL, mm	Markers per card	Wire cross-section, mm ² **	Outer diameter of insulation, mm	Cat. no. Inlay	SW Code
PC-TDMO-01 4X12 WH	28114.7	White	880	4x12	40	0.5 - 1.5	2 - 2.9	28022.0	125
PC-TDMO-01 4X12 YE	28114.8	Yellow	800	4x12	40	0.5 - 1.5	2 - 2.9	28022.0	125
PC-TDMO-01 4X16 WH	28115.7	White	880	4x16	40	0.5 - 1.5	2 - 2.9	28022.0	128
PC-TDMO-01 4X16 YE	28115.8	Yellow	800	4x16	40	0.5 - 1.5	2 - 2.9	28022.0	128
PC-TDMO-02 4X12 WH	28116.7	White	640	4x12	40	1.5 - 2.5	2.9 - 3.5	28022.0	126
PC-TDMO-02 4X12 YE	28116.8	Yellow	640	4x12	40	1.5 - 2.5	2.9 - 3.5	28022.0	126
PC-TDMO-02 4X16 WH	28117.7	White	640	4x16	40	1.5 - 2.5	2.9 - 3.5	28022.0	129
PC-TDMO-02 4X16 YE	28117.8	Yellow	640	4x16	40	1.5 - 2.5	2.9 - 3.5	28022.0	129
PC-TDMO-03 4X12 WH	28118.7	White	560	4x12	40	4 - 6	4 - 4.6	28022.0	127
PC-TDMO-03 4X12 YE	28118.8	Yellow	560	4x12	40	4 - 6	4 - 4.6	28022.0	127
PC-TDMO-03 4X16 WH	28119.7	White	560	4x16	40	4 - 6	4 - 4.6	28022.0	130
PC-TDMO-03 4X16 YE	28119.8	Yellow	560	4x16	40	4 - 6	4 - 4.6	28022.0	130

** = This specified cross-section is a guideline. Wires with the same cross-section may have different outer diameters. Therefore, we recommend using the diameter as the reference value.

Wire and cable markers PVC-ETF and PC-ETF-HF

Markers from the **PVC-ETF** and **PC-ETF-HF** series are attached using cable ties to cables, pipes or other lines with large diameters.

The blank cards can be easily labelled using the **TTPCard** thermal-transfer printer.



Characteristics	PVC-ETF...	PC-ETF-HF...
Material	PVC	Polycarbonate
Temperature range	-30°C to +60°C	-40°C to +130°C
Flamm. class acc. to UL 94	V-0	V-0
Features:	Silicone-free	Halogen-free, silicone-free
Application		
Max. width, cable tie	4.8 mm	4.8 mm
Colour variants	⑦ ⑧	⑦ ⑧

Type	Cat. no.	Colour	Qty.	Size WxL, mm	Label field mm	Markers per card	Cat. no. Inlay	SW Code
PVC-ETF 13X57 WH	28120.7	White	700	13x57	11x35	14	28041.0	581
PVC-ETF 13X57 YE	28120.8	Yellow	700	13x57	11x35	14	28041.0	581
PVC-ETF 20X26 WH	28121.7	White	750	20x26	8x22	15	28041.0	583
PVC-ETF 20X26 YE	28121.8	Yellow	750	20x26	8x22	15	28041.0	583
PVC-ETF 20X27 WH	28122.7	White	750	20x27	15x18	15	28041.0	582
PVC-ETF 20X27 YE	28122.8	Yellow	750	20x27	15x18	15	28041.0	582
PVC-ETF 28X57 WH	28123.7	White	300	28x57	26x35	6	28041.0	591
PVC-ETF 28X57 YE	28123.8	Yellow	300	28x57	26x35	6	28041.0	591
PC-ETF 13X57 WH	28124.7	White	700	13x57	11x35	14	28041.0	581
PC-ETF 13X57 YE	28124.8	Yellow	700	13x57	11x35	14	28041.0	581
PC-ETF 28X57 WH	28125.7	White	300	28x57	24x35	6	28041.0	590
PC-ETF 28X57 YE	28125.8	Yellow	300	28x57	24x35	6	28041.0	590

Wire and cable markers PVCF-KMP

The self-adhesive **PVCF-KMP** labels are used to label conductors and cables with large diameters. Excellent resistance is ensured by the transparent protective strip, which is taped over the printed surface.

The blank cards can be easily labelled using the **TTPCard** thermal-transfer printer.



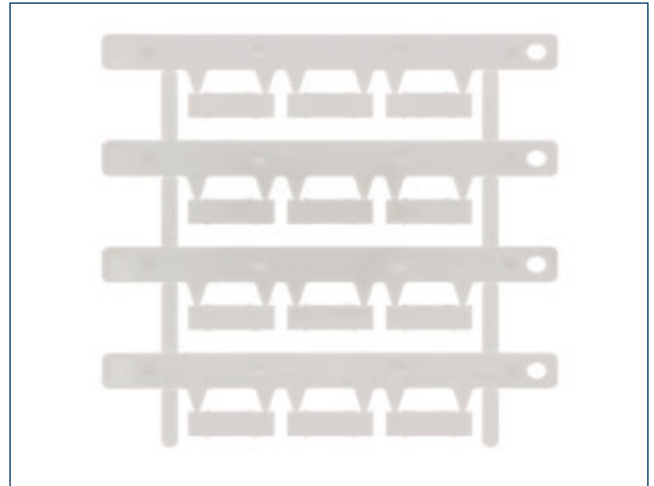
Characteristics	
Material	PVC film
Temperature range	-30°C to +70°C
Processing temperature	+10°C to +40°C
Flamm. class acc. to UL 94	V-0
Features	Silicone-free
Colour variants	⑦ ⑧

Type	Cat. no.	Colour	Qty.	Size WxL, mm	Label field mm	Outer diameter of insulation, mm	Markers per card	Cat. no. Inlay	SW Code
PVCF-KMP 038 10X15 WH	28126.7	White	600	15x38	10x15	4.3 - 7	12	28041.0	301
PVCF-KMP 038 10X15 YE	28126.8	Yellow	400	15x38	10x15	4.3 - 7	12	28041.0	301
PVCF-KMP 038 10X23 WH	28127.7	White	600	23x38	10x23	4.3 - 7	8	28041.0	302
PVCF-KMP 038 10X23 YE	28127.8	Yellow	400	23x38	10x23	4.3 - 7	8	28041.0	302
PVCF-KMP 050 15X15 WH	28128.7	White	600	15x50	15x15	6 - 10	12	28041.0	303
PVCF-KMP 050 15X15 YE	28128.8	Yellow	400	15x50	15x15	6 - 10	12	28041.0	303
PVCF-KMP 050 15X23 WH	28129.7	White	600	23x50	15x23	6 - 10	8	28041.0	304
PVCF-KMP 050 15X23 YE	28129.8	Yellow	400	23x50	15x23	6 - 10	8	28041.0	304
PVCF-KMP 075 25X15 WH	28130.7	White	300	15x75	25x15	8 - 14	6	28041.0	305
PVCF-KMP 075 25X15 YE	28130.8	Yellow	200	23x75	25x15	8 - 14	6	28041.0	305
PVCF-KMP 075 25X23 WH	28131.7	White	300	15x75	25x23	8 - 14	4	28041.0	306
PVCF-KMP 075 25X23 YE	28131.8	Yellow	200	23x75	25x23	8 - 14	4	28041.0	306
PVCF-KMP 100 25X15 WH	28132.7	White	300	15x100	25x15	12 - 20	6	28041.0	310
PVCF-KMP 100 25X15 YE	28132.8	Yellow	200	23x100	25x15	12 - 20	6	28041.0	310
PVCF-KMP 100 25X23 WH	28133.7	White	300	15x100	25x23	12 - 20	4	28041.0	311
PVCF-KMP 100 25X23 YE	28133.8	Yellow	200	23x100	25x23	12 - 20	4	28041.0	311
PVCF-KMP 135 50X50 WH	28134.7	White	100	50x135	50x50	20 - 25	2	28041.0	312

Device and installation markers PC-SPM

Labelling markers from the **PC-SPM** series have mounting feet on the back so that they can be used to label components and parts in facilities.

The blank cards can be easily labelled using the **TTPCard** thermal-transfer printer.



Characteristics

Material	Polycarbonate
Temperature range	-40°C to +130°C
Flamm. class acc. to UL 94	V-0
Features	Halogen-free, silicone-free
Colour variants	⑦

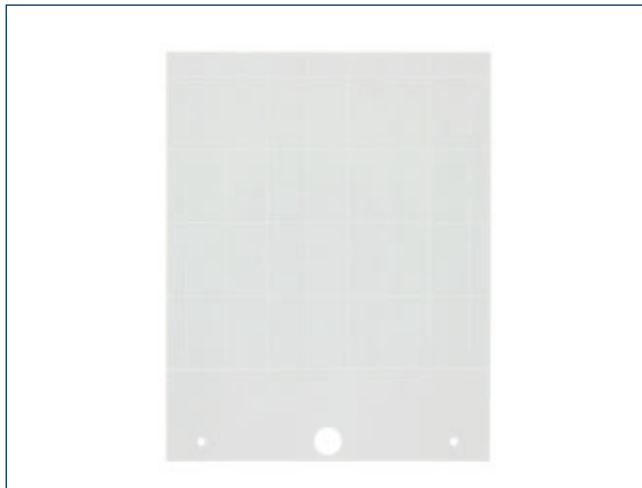
Type	Cat. no.	Colour	Qty.	Size WxL, mm	Markers per card	Application	Cat. no. Inlay	SW Code
PC-SPM-02 7X20 WH	28135.7	White	360	7x20	12	Siemens Sirius and ABB AF components	28029.0	142
PC-SPM-02 9X19 WH	28136.7	White	360	9x19	12	Siemens Eaton	28039.0	143
PC-SPM-09 8X20 WH	28137.7	White	360	8x20	12	Murr Elektronik	28024.0	144

Device and installation markers PVC-TAP

The **PVC-TAP** labelling markers are particularly versatile. They can be used to label cables, hoses, buttons, machinery, components, etc.

Various marker holders (both all-purpose holders and controls-specific holders) are available for the different marker sizes.

The blank cards can be easily labelled using the **TTPCard** thermal-transfer printer.



Characteristics	
Material	PVC
Temperature range	-30°C to +60°C
Flamm. class acc. to UL 94	V-0
Features	Silicone-free
Colour variants	⑥ ⑦ ⑧

Type	Cat. no.	Colour	Qty.	Size WxL, mm	Markers per card	Application	Cat. no. Inlay	SW Code
PVC-TAP 15X17 WH	28138.7	White	420	15x17	42	GSU-H 17x15 BK, PS 15 Profile *	28041.0	165
PVC-TAP 15X17 YE	28138.8	Yellow	420	15x17	42	GSU-H 17x15 BK, PS 15 Profile *	28041.0	165
PVC-TAP 15X17 GR	28138.6	Grey	420	15x17	42	GSU-H 17x15 BK, PS 15 Profile *	28041.0	165
PVC-TAP 15X27 WH	28139.7	White	700	15x27	28	GSU-H 27x15 BK, PS 15 Profile *	28041.0	166
PVC-TAP 15X27 YE	28139.8	Yellow	700	15x27	28	GSU-H 27x15 BK, PS 15 Profile *	28041.0	166
PVC-TAP 15X27 GR	28139.6	Grey	700	15x27	28	GSU-H 27x15 BK, PS 15 Profile *	28041.0	166
PVC-TAP 15X32 WH	28140.7	White	525	15x32	21	PS 15 Profile *	28041.0	352
PVC-TAP 15X43 WH	28141.7	White	350	15x43	14	PS 15 Profile *	28041.0	353
PVC-TAP 15X49 WH	28142.7	White	350	15x49	14	GSU-H 49x15 BK, PS 15 Profile *	28041.0	167
PVC-TAP 15X49 YE	28142.8	Yellow	350	15x49	14	GSU-H 49x15 BK, PS 15 Profile *	28041.0	167
PVC-TAP 15X49 GR	28142.6	Grey	350	15x49	14	GSU-H 49x15 BK, PS 15 Profile *	28041.0	167
PVC-TAP 15X67 WH	28143.7	White	175	15x67	7	PS 15 Profile *	28041.0	168
PVC-TAP 15X67 YE	28143.8	Yellow	175	15x67	7	PS 15 Profile *	28041.0	168
PVC-TAP 15X67 GR	28143.6	Grey	175	15x67	7	PS 15 Profile *	28041.0	168
PVC-TAP 17.5X27.8 WH	28144.7	White	600	17.5x27.8	24	Siemens 3SB3 925 0AV, GST-H 27x18 *	28041.0	175
PVC-TAP 17.5X27.8 GR	28144.6	Grey	600	17.5x27.8	24	Siemens 3SB3 925 0AV, GST-H 27x18 *	28041.0	175
PVC-TAP 8.2X27 WH	28145.7	White	1100	8.2x27	44	Telemecanique ZBZ-32, GST-H 27x8 *	28041.0	807
PVC-TAP 8.2X27 YE	28145.8	Yellow	1100	8.2x27	44	Telemecanique ZBZ-32, GST-H 27x8 *	28041.0	807
PVC-TAP 8.2X27 GR	28145.6	Grey	1100	8.2x27	44	Telemecanique ZBZ-32, GST-H 27x8 *	28041.0	807
PVC-TAP 18X27 WH	28146.7	White	500	18x27	20	Telemecanique (ZBZ-33, ZBZ-35), Eaton, GST-H 27x18 *	28041.0	178
PVC-TAP 18X27 YE	28146.8	Yellow	500	18x27	20	Telemecanique (ZBZ-33, ZBZ-35), Eaton, GST-H 27x18 *	28041.0	178
PVC-TAP 18X27 GR	28146.6	Grey	500	18x27	20	Telemecanique (ZBZ-33, ZBZ-35), Eaton, GST-H 27x18 *	28041.0	178
PVC-TAP 6.4x27.3 WH	28355.7	White	560	6.4x27.3	56	Allen-Bradley	28041.0	715
PVC-TAP 6.4x27.3 GR	28355.6	Grey	560	6.4x27.3	56	Allen-Bradley	28041.0	715
PVC-TAP 16.3x27.3 WH	28356.7	White	600	16.3x27.3	24	Allen-Bradley	28041.0	716
PVC-TAP 16.3x27.3 GR	28356.6	Grey	600	16.3x27.3	24	Allen-Bradley	28041.0	716

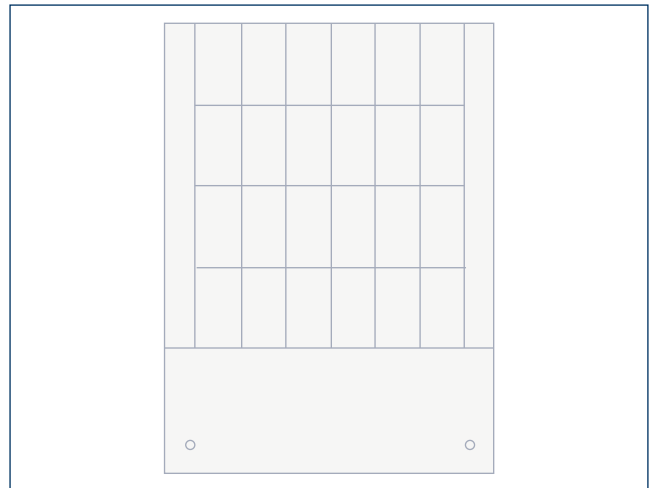
* Refer to pages 31 to 33 for accessories to the GSU-H, GST-H and PS15 holders.

Device and installation markers PVC-PTS

The **PC-TAP** labelling markers are particularly versatile. They can be used to label cables, hoses, buttons, machinery, components, etc.

The appropriate marker holders are available for each of the different marker sizes.

The blank cards can be easily labelled using the **TTPCard** thermal-transfer printer.



Characteristics	
Material	PVC
Temperature range	-30°C to +60°C
Flamm. class acc. to UL 94	V-0
Features	Silicone-free
Colour variants	Transparent

Type	Cat. no.	Colour	Qty.	Size WxL, mm	Markers per card	Application	Cat. no. Inlay	SW Code
PVC-TAP-CCS 15X17	28147.7	Transparent	900	15x17	36	GSU-H 17x15 BK *	28041.0	165
PVC-TAP-CCS 15X27	28148.7	Transparent	1200	15x27	24	GSU-H 27x15 BK *	28041.0	166
PVC-TAP-CCS 17.5X27.8	28149.7	Transparent	1200	17.5x27.8	24	GST-H 27x18 *	28041.0	175
PVC-TAP-CCS 15X49	28150.7	Transparent	600	15x49	12	GSU-H 49x15 BK *	28041.0	167
PVC-TAP-CCS 15X67	28151.7	Transparent	300	15x67	6	GSU-H 67x15 BK *	28041.0	168

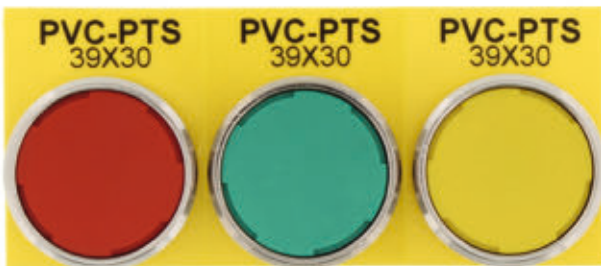
* Refer to pages 31 and 32 for accessories to the GSU-H and GST-H holders.

Device and installation markers PVC-PTS...

The **PVC-PTS** labelling markers are used for labelling operating elements with an inner diameter of 22.5 mm and 31 mm.

The **PVC-PTS** are pre-stamped and can be mounted directly under the operating element. The **PVC-PTS** variant is self-adhesive.

The blank cards can be easily labelled using the **TTPCard** thermal-transfer printer.



Characteristics	
Material	PVC
Temperature range	-30°C to +60°C
Processing temperature	+10°C to +40°C
Flamm. class acc. to UL 94	V-0
Features	Silicone-free
Colour variants	⑥ ⑦ ⑧

Type	Cat. no.	Colour	Qty.	Size WxL, mm	Markers per card	Hole Diameter, mm	Application	Cat. no. Inlay	SW Code
PVC-PTS 39X30 WH	28152.7	White	150	39x30	6	22.5	Under operating element	28041.0	1002
PVC-PTS 39X30 YE	28152.8	Yellow	150	39x30	6	22.5	Under operating element	28041.0	1002
PVC-PTS 39X30 GR	28152.6	Grey	150	39x30	6	22.5	Under operating element	28041.0	1002
PVC-PTS 40X30 WH	28153.7	White	150	40x30	6	22.5	Under operating element	28041.0	1000
PVC-PTS 40X30 YE	28153.8	Yellow	150	40x30	6	22.5	Under operating element	28041.0	1000
PVC-PTS 40X30 GR	28153.6	Grey	150	40x30	6	22.5	Under operating element	28041.0	1000
PVC-PTS 50X30 WH	28154.7	White	150	50x30	6	22.5	Under operating element	28041.0	1001
PVC-PTS 50X30 YE	28154.8	Yellow	150	50x30	6	22.5	Under operating element	28041.0	1001
PVC-PTS 50X30 GR	28154.6	Grey	150	50x30	6	22.5	Under operating element	28041.0	1001
PVC-PTS 60X62 WH	28157.7	White	100	60x62	4	31	Under operating element	28041.0	1003
PVC-PTS 60X62 YE	28157.8	Yellow	100	60x62	4	31	Under operating element	28041.0	1003
PVC-PTS 60X62 GR	28157.6	Grey	100	60x62	4	31	Under operating element	28041.0	1003
PVC-PTS 60X40 K WH	28158.7	White	50	60x40	4	31	Self-adhesive	28041.0	1005
PVC-PTS 60X62 K WH	28159.7	White	50	60x62	4	31	Self-adhesive	28041.0	1003
PVC-PTS 60X62 K YE	28159.8	Yellow	50	60x62	4	31	Self-adhesive	28041.0	1003
PVC-PTS 60X62 K GR	28159.6	Grey	50	60x62	4	31	Self-adhesive	28041.0	1003

Device and installation markers PVC-TAPW

The **PVC-TAPW** labelling markers are particularly versatile. They can be used to label cables, hoses, buttons, machinery and components.

The **PVC-TAPW** may be used with the transparent marking holder or with the **PS 9** labelling profile.

The blank cards can be easily labelled using the **TTPCard** thermal-transfer printer.



Characteristics

Material	PVC
Temperature range	-30°C to +60°C
Flamm. class acc. to UL 94	V-0
Features	Silicone-free
Colour variants	⑦ ⑧

Type	Cat. no.	Colour	Qty.	Size WxL, mm	Markers per card	Application	Cat. no. Inlay	SW Code
PCV-TAPW 9X12 WH	28160.7	White	880	9x12	88	PS 9 Profile *	28041.0	360
PCV-TAPW 9X12 YE	28160.8	Yellow	880	9x12	88	PS 9 Profile *	28041.0	360
PCV-TAPW 9X15 WH	28161.7	White	770	9x15	77	PS 9 Profile *	28041.0	361
PCV-TAPW 9X15 YE	28161.8	Yellow	770	9x15	77	PS 9 Profile *	28041.0	361
PCV-TAPW 9X20 WH	28162.7	White	1375	9x20	55	PS 9 Profile *	28041.0	362
PCV-TAPW 9X20 YE	28162.8	Yellow	1375	9x20	55	PS 9 Profile *	28041.0	362
PCV-TAPW 9X29 WH	28163.7	White	750	9x29	30	PS 9 Profile *	28041.0	363
PCV-TAPW 9X29 YE	28163.8	Yellow	750	9x29	30	PS 9 Profile *	28041.0	363
PCV-TAPW 9X35 WH	28164.7	White	825	9x35	33	PS 9 Profile *	28041.0	364
PCV-TAPW 9X35 YE	28164.8	Yellow	825	9x35	33	PS 9 Profile *	28041.0	364

* Refer to page 33 for accessories to the marking profiles PS 9

Device and installation markers PVC-TAA

The **PVC-TAA** labelling markers are particularly versatile. They can be used to label cables, hoses, buttons, machinery and components.

The back of the labelling marker is self-adhesive.

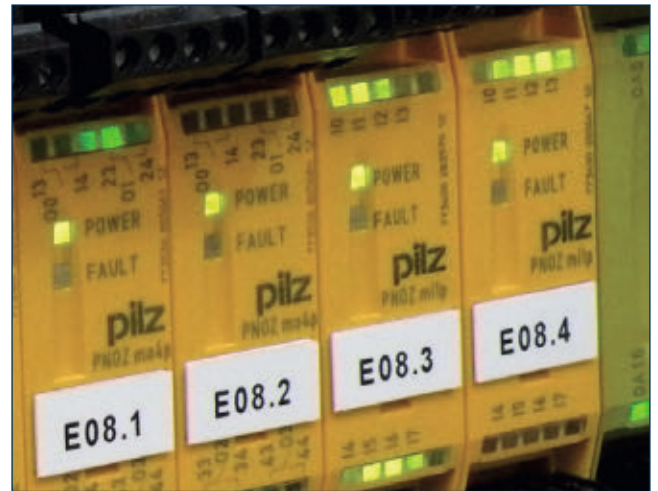
The blank cards can be easily labelled using the **TTPCard** thermal-transfer printer.



Characteristics	
Material	PVC
Temperature range	-30°C to +60°C
Processing temperature	+10°C to +40°C
Flamm. class acc. to UL 94	V-0
Features	Silicone-free
Colour variants	⑥ ⑦ ⑧

Type	Cat. no.	Colour	Qty.	Size WxL, mm	Markers per card	Application	Cat. no. Inlay	SW Code
PVC-TAA 7X20 K WH	28165.7	White	600	7x20	60	Siemens Sirius, self-adhesive	28041.0	179
PVC-TAA 7X20 K YE	28165.8	Yellow	600	7x20	60	Siemens Sirius, self-adhesive	28041.0	179
PVC-TAA 7X20 K GR	28165.6	Grey	600	7x20	60	Siemens Sirius, self-adhesive	28041.0	179
PVC-TAA 8X12 K WH	28166.7	White	960	8x12	96	Self-adhesive	28041.0	723
PVC-TAA 8X12 K YE	28166.8	White	960	8x12	96	Self-adhesive	28041.0	723
PVC-TAA 8X12 K GR	28166.6	Yellow	960	8x12	96	Self-adhesive	28041.0	723
PVC-TAA 8X17 K WH	28167.7	White	720	8x17	72	Telemecanique, self-adhesive	28041.0	724
PVC-TAA 8X17 K YE	28167.8	Yellow	720	8x17	72	Telemecanique, self-adhesive	28041.0	724
PVC-TAA 8.5X30 K WH	28168.7	White	330	8.5x30	33	ABB SNK LH, self-adhesive	28041.0	720
PVC-TAA 8.5X30 K YE	28168.8	Yellow	330	8.5x30	33	ABB SNK LH, self-adhesive	28041.0	720
PVC-TAA 9X12 K WH	28169.7	White	880	9x12	88	Self-adhesive	28041.0	960
PVC-TAA 9X12 K YE	28169.8	Yellow	880	9x12	88	Self-adhesive	28041.0	960
PVC-TAA 9X12 K GR	28169.6	Grey	880	9x12	88	Self-adhesive	28041.0	960
PVC-TAA 9X15 K WH	28170.7	White	770	9x15	77	Self-adhesive	28041.0	961
PVC-TAA 9X15 K YE	28170.8	Yellow	770	9x15	77	Self-adhesive	28041.0	961
PVC-TAA 9X15 K GR	28170.6	Grey	770	9x15	77	Self-adhesive	28041.0	961
PVC-TAA 9X20 K WH	28171.7	White	550	9x20	55	Siemens Sirius, self-adhesive	28041.0	962
PVC-TAA 9X20 K YE	28171.8	Yellow	550	9x20	55	Siemens Sirius, self-adhesive	28041.0	962
PVC-TAA 9X20 K GR	28171.6	Grey	550	9x20	55	Siemens Sirius, self-adhesive	28041.0	962
PVC-TAA 9X35 K WH	28172.7	White	330	9x35	33	Self-adhesive	28041.0	964
PVC-TAA 9X35 K YE	28172.8	Yellow	330	9x35	33	Self-adhesive	28041.0	964
PVC-TAA 9X35 K GR	28172.6	Grey	330	9x35	33	Self-adhesive	28041.0	964
PVC-TAA 9X50 K WH	28173.7	White	200	9x50	20	Self-adhesive	28041.0	976
PVC-TAA 9X50 K YE	28173.8	Yellow	200	9x50	20	Self-adhesive	28041.0	976
PVC-TAA 9X50 K GR	28173.6	Grey	200	9x50	20	Self-adhesive	28041.0	976
PVC-TAA 10X105 K WH	28174.7	White	100	10x105	10	Self-adhesive	28041.0	530
PVC-TAA 10X105 K YE	28174.8	Yellow	100	10x105	10	Self-adhesive	28041.0	530
PVC-TAA 15X17 K WH	28175.7	White	420	15x17	42	Self-adhesive	28041.0	965
PVC-TAA 15X17 K YE	28175.8	Yellow	420	15x17	42	Self-adhesive	28041.0	965
PVC-TAA 15X17 K GR	28175.6	Grey	420	15x17	42	Self-adhesive	28041.0	965
PVC-TAA 15X27 K WH	28176.7	White	280	15x27	28	Self-adhesive	28041.0	966
PVC-TAA 15X27 K YE	28176.8	Yellow	280	15x27	28	Self-adhesive	28041.0	966
PVC-TAA 15X27 K GR	28176.6	Grey	280	15x27	28	Self-adhesive	28041.0	966
PVC-TAA 15X44 K WH	28177.7	White	120	15x44	12	Self-adhesive	28041.0	854
PVC-TAA 15X44 K YE	28177.8	Yellow	120	15x44	12	Self-adhesive	28041.0	854
PVC-TAA 15X44 K GR	28177.6	Grey	120	15x44	12	Self-adhesive	28041.0	854

Device and installation markers PVC-TAA

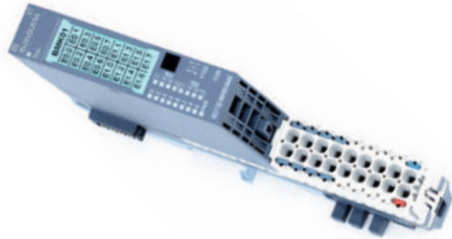


Type	Cat. no.	Colour	Qty.	Size WxL, mm	Markers per card	Application	Cat. no. Inlay	SW Code
PVC-TAA 15X49 K WH	28178.7	White	140	15x49	14	Self-adhesive	28041.0	967
PVC-TAA 15X49 K YE	28178.8	Yellow	140	15x49	14	Self-adhesive	28041.0	967
PVC-TAA 15X49 K GR	28178.6	Grey	140	15x49	14	Self-adhesive	28041.0	967
PVC-TAA 15X67 K WH	28179.7	White	70	15x67	7	Self-adhesive	28041.0	968
PVC-TAA 15X67 K YE	28179.8	Yellow	70	15x67	7	Self-adhesive	28041.0	968
PVC-TAA 15X67 K GR	28179.6	Grey	70	15x67	7	Self-adhesive	28041.0	968
PVC-TAA 17X32 K WH	28180.7	White	180	17x32	18	Self-adhesive	28041.0	710
PVC-TAA 17X32 K YE	28180.8	Yellow	180	17x32	18	Self-adhesive	28041.0	710
PVC-TAA 17X35 K WH	28181.7	White	180	17x35	18	ABB SNK LH-R1, self-adhesive	28041.0	711
PVC-TAA 17X35 K YE	28181.8	Yellow	180	17x35	18	ABB SNK LH-R1, self-adhesive	28041.0	711
PVC-TAA 17X35 K GR	28181.6	Grey	180	17x35	18	ABB SNK LH-R1, self-adhesive	28041.0	711
PVC-TAA 17X44 K WH	28182.7	White	120	17x44	12	Self-adhesive	28041.0	717
PVC-TAA 17X44 K YE	28182.8	Yellow	120	17x44	12	Self-adhesive	28041.0	717
PVC-TAA 17X44 K GR	28182.6	Grey	120	17x44	12	Self-adhesive	28041.0	717
PVC-TAA 17.5X27.8 K GR	28230.6	Grey	240	17.5x27.8	24	Self-adhesive	28041.0	175
PVC-TAA 20X40 K WH	28183.7	White	100	20x40	10	Self-adhesive	28041.0	803
PVC-TAA 20X40 K YE	28183.8	Yellow	100	20x40	10	Self-adhesive	28041.0	803
PVC-TAA 20X40 K GR	28183.6	Grey	100	20x40	10	Self-adhesive	28041.0	803
PVC-TAA 20X48 K WH	28184.7	White	100	20x48	10	Self-adhesive	28041.0	850
PVC-TAA 20X48 K YE	28184.8	Yellow	100	20x48	10	Self-adhesive	28041.0	850
PVC-TAA 20X48 K GR	28184.6	Grey	100	20x48	10	Self-adhesive	28041.0	850
PVC-TAA 20X72 K WH	28185.7	White	50	20x72	5	Self-adhesive	28041.0	851
PVC-TAA 20X72 K YE	28185.8	Yellow	50	20x72	5	Self-adhesive	28041.0	851
PVC-TAA 20X72 K GR	28185.6	Grey	50	20x72	5	Self-adhesive	28041.0	851
PVC-TAA 20X96 K WH	28186.7	White	50	20x96	5	Self-adhesive	28041.0	852
PVC-TAA 20X96 K YE	28186.8	Yellow	50	20x96	5	Self-adhesive	28041.0	852
PVC-TAA 20X96 K GR	28186.6	Grey	50	20x96	5	Self-adhesive	28041.0	852
PVC-TAA 18X27 K WH	28187.7	White	200	18x27	20	Telemecanique ZBZ 33 / ZBZ-35	28041.0	178
PVC-TAA 18X27 K YE	28187.8	Yellow	200	18x27	20	Telemecanique ZBZ 33 / ZBZ-35	28041.0	178
PVC-TAA 18X27 K GR	28187.6	Grey	200	18x27	20	Telemecanique ZBZ 33 / ZBZ-35	28041.0	178
PVC-TAA 12.5X27 K WH	28188.7	White	150	12.5x27	15	Siemens 3SB3923-0AV / 3SB3943-0AX	28041.0	865
PVC-TAA 12.5X27 K GR	28188.6	Yellow	150	12.5x27	15	Siemens 3SB3923-0AV / 3SB3943-0AX	28041.0	865
PVC-TAA 22X22 K WH	28189.7	White	120	22x22	12	Siemens 3SB3923-0AV / 3SB3943-0AX	28041.0	866
PVC-TAA 22X22 K GR	28189.6	Grey	120	22x22	12	Siemens 3SB3923-0AV and 3SB3943-0AX	28041.0	866
PVC-TAA 27X27 K WH	28190.7	White	90	27x27	9	Siemens 3SB3923-0AV and 3SB3943-0AX	28041.0	863
PVC-TAA 27X27 K GR	28190.6	Grey	90	27x27	9	Siemens 3SB3923-0AV and 3SB3943-0AX	28041.0	863

Device and installation markers PVC-PLC

The **PVC-PLC** markers are used to label Siemens PLC controllers. The **PVC PLC** provides a quick and clear solution for labelling Siemens I/O cards.

The blank cards can be easily labelled using the **TTPCard** thermal-transfer printer.



Characteristics	
Material	PVC
Temperature range	-30°C to +60°C
Flamm. class acc. to UL 94	V-0
Features	Silicone-free
Colour variants	

Type	Cat. no.	Colour	Qty.	Size WxL, mm	Markers per card	Material thickness mm	Cat. no. Inlay	SW Code
PVC-PLC 12.7x31 CY	28336.0	Cyan	525	12.7x31	21	0.3	28041.0	900
PVC-PLC 12.7X50 CY	28337.0	Cyan	350	12.7x50	14	0.3	28041.0	885
PVC-PLC 12.7X103.5 CY	28338.0	Cyan	150	12.7x103.5	6	0.5	28041.0	882
PVC-PLC 22.75X103.5 CY	28339.0	Cyan	100	22.75x103.5	4	0.5	28041.0	883
PVC-PLC 22.75X109 CY	28340.0	Cyan	100	22.75x109	4	0.5	28041.0	896
PVC-PLC 52X80 CY	28341.0	Cyan	50	52x80	2	0.3	28041.0	899

Device and installation markers PVC-VRT-R

The non-adhesive **PVC-VRT-R** markers are made from rigid PVC. They are used for making custom markers (e.g. containing the company logo, technical data, identification numbers, or CE certifications).

The blank cards can be easily labelled using the **TTPCard** thermal-transfer printer.



Characteristics	
Material	PVC
Temperature range	-30°C to +60°C
Flamm. class acc. to UL 94	V-0
Processing temperature	+10°C to +40°C
Features	Silicone-free
Material thickness	0.5 mm
Colour variants	6 7 8

Type	Cat. no.	Colour	Qty.	Size WxL, mm	Markers per card	Application	Cat. no. Inlay	SW Code
PVC-VRT-R 32X58 WH	28191.7	White	150	32x58	6	Non-adhesive	28041.0	200
PVC-VRT-R 32X58 YE	28191.8	Yellow	150	32x58	6	Non-adhesive	28041.0	200
PVC-VRT-R 32X58 GR	28191.6	Grey	150	32x58	6	Non-adhesive	28041.0	200
PVC-VRT-R 42X78 WH	28192.7	White	50	42x78	2	Non-adhesive	28041.0	202
PVC-VRT-R 42X78 YE	28192.8	Yellow	50	42x78	2	Non-adhesive	28041.0	202
PVC-VRT-R 42X78 GR	28192.6	Grey	50	42x78	2	Non-adhesive	28041.0	202
PVC-VRT-R 52X107 WH	28193.7	White	50	52x107	2	Non-adhesive	28041.0	204
PVC-VRT-R 52X107 YE	28193.8	Yellow	50	52x107	2	Non-adhesive	28041.0	204
PVC-VRT-R 52X107 GR	28193.6	Grey	50	52x107	2	Non-adhesive	28041.0	204
PVC-VRT-R 62X88 WH	28194.7	White	25	62x88	1	Non-adhesive	28041.0	203
PVC-VRT-R 62X88 YE	28194.8	Yellow	25	62x88	1	Non-adhesive	28041.0	203
PVC-VRT-R 62X88 GR	28194.6	Grey	25	62x88	1	Non-adhesive	28041.0	203
PVC-VRT-R 92X118 WH	28195.7	White	25	92x118	1	Non-adhesive	28041.0	813
PVC-VRT-R 92X118 YE	28195.8	Yellow	25	92x118	1	Non-adhesive	28041.0	813
PVC-VRT-R 92X118 GR	28195.6	Grey	25	92x118	1	Non-adhesive	28041.0	813
PVC-VRT-R 35X100 WH	28196.7	White	30	35x100	3	Non-adhesive	28041.0	810
PVC-VRT-R 35X100 YE	28196.8	Yellow	30	35x100	3	Non-adhesive	28041.0	810
PVC-VRT-R 35X100 GR	28196.6	Grey	30	35x100	3	Non-adhesive	28041.0	810
PVC-VRT-R 50X100 WH	28197.7	White	50	50x100	2	Non-adhesive	28041.0	844
PVC-VRT-R 102X138 WH	28198.7	White	25	102x138	1	Non-adhesive	28041.0	207
PVC-VRT-R 102X138 YE	28198.8	Yellow	25	102x138	1	Non-adhesive	28041.0	207
PVC-VRT-R 102X138 GR	28198.6	Grey	25	102x138	1	Non-adhesive	28041.0	207

Device and installation markers PVC-VRT-A

The non-adhesive **PVC-VRT-A** markers are made from rigid PVC. They are used for making custom markers (e.g. containing the company logo, technical data, identification numbers, or CE labels).

The back is self-adhesive; these markers can be attached to all facility components.

The blank cards can be easily labelled using the **TTPCard** thermal-transfer printer.



Characteristics	
Material	PVC
Temperature range	-30°C to +60°C
Processing temperature	+10°C to +40°C
Flamm. class acc. to UL 94	V-0
Features	Silicone-free
Material thickness	0,9 mm
Colour variants	6 7 8

Type	Cat. no.	Colour	Qty.	Size WxL, mm	Markers per card	Application	Cat. no. Inlay	SW Code
PVC-VRT-A 25X50 WH	28215.7	White	80	25x50	8	Self-adhesive	28041.0	853
PVC-VRT-A 25X50 YE	28215.8	Yellow	80	25x50	8	Self-adhesive	28041.0	853
PVC-VRT-A 25X50 GR	28215.6	Grey	80	25x50	8	Self-adhesive	28041.0	853
PVC-VRT-A 25X80 WH	28216.7	White	40	25x80	4	Self-adhesive	28041.0	861
PVC-VRT-A 25X80 YE	28216.8	Yellow	40	25x80	4	Self-adhesive	28041.0	861
PVC-VRT-A 25X80 GR	28216.6	Grey	40	25x80	4	Self-adhesive	28041.0	861
PVC-VRT-A 25X100 WH	28217.7	White	40	25x100	4	Self-adhesive	28041.0	205
PVC-VRT-A 25X100 YE	28217.8	Yellow	40	25x100	4	Self-adhesive	28041.0	205
PVC-VRT-A 32X58 WH	28218.7	White	60	32x58	6	Self-adhesive	28041.0	200
PVC-VRT-A 32X58 YE	28218.8	Yellow	60	32x58	6	Self-adhesive	28041.0	200
PVC-VRT-A 32X58 GR	28218.6	Grey	60	32x58	6	Self-adhesive	28041.0	200
PVC-VRT-A 35X75 WH	28219.7	White	30	35x75	3	Self-adhesive	28041.0	825
PVC-VRT-A 35X75 YE	28219.8	Yellow	30	35x75	3	Self-adhesive	28041.0	825
PVC-VRT-A 35X100 WH	28220.7	White	30	35x100	3	Self-adhesive	28041.0	810
PVC-VRT-A 35X100 YE	28220.8	Yellow	30	35x100	3	Self-adhesive	28041.0	810
PVC-VRT-A 35X100 GR	28220.6	Grey	30	35x100	3	Self-adhesive	28041.0	810
PVC-VRT-A 42X78 WH	28221.7	White	20	42x78	2	Self-adhesive	28041.0	202
PVC-VRT-A 42X78 YE	28221.8	Yellow	20	42x78	2	Self-adhesive	28041.0	202
PVC-VRT-A 42X78 GR	28221.6	Grey	20	42x78	2	Self-adhesive	28041.0	202
PVC-VRT-A 50X50 WH	28222.7	White	40	50x50	4	Self-adhesive	28041.0	858
PVC-VRT-A 50X50 YE	28222.8	Yellow	40	50x50	4	Self-adhesive	28041.0	858
PVC-VRT-A 52X107 WH	28223.7	White	20	52x107	2	Self-adhesive	28041.0	204
PVC-VRT-A 52X107 YE	28223.8	Yellow	20	52x107	2	Self-adhesive	28041.0	204
PVC-VRT-A 52X107 GR	28223.6	Grey	20	52x107	2	Self-adhesive	28041.0	204
PVC-VRT-A 55X82 GR	28231.6	Grey	20	55x82	2	Self-adhesive	28041.0	841
PVC-VRT-A 62X88 WH	28224.7	White	10	62x88	1	Self-adhesive	28041.0	203
PVC-VRT-A 62X88 YE	28224.8	Yellow	10	62x88	1	Self-adhesive	28041.0	203
PVC-VRT-A 62X88 GR	28224.6	Grey	10	62x88	1	Self-adhesive	28041.0	203
PVC-VRT-A 92X118 WH	28225.7	White	10	92x118	1	Self-adhesive	28041.0	813
PVC-VRT-A 92X118 YE	28225.8	Yellow	10	92x118	1	Self-adhesive	28041.0	813
PVC-VRT-A 92X118 GR	28225.6	Grey	10	92x118	1	Self-adhesive	28041.0	813
PVC-VRT-A 105X110 WH	28226.7	White	10	105x110	1	Self-adhesive	28041.0	812
PVC-VRT-A 105X110 YE	28226.8	Yellow	10	105x110	1	Self-adhesive	28041.0	812
PVC-VRT-A 105X110 GR	28226.6	Grey	10	105x110	1	Self-adhesive	28041.0	812
PVC-VRT-A 25X140 WH	28227.7	White	50	25x140	1	Self-adhesive	28041.0	824
PVC-VRT-A 25X140 YE	28227.8	Yellow	50	25x140	1	Self-adhesive	28041.0	824
PVC-VRT-A 40X138 WH	28228.7	White	25	40x138	1	Self-adhesive	28041.0	822
PVC-VRT-A 102X138 WH	28229.7	White	25	102x138	1	Self-adhesive	28041.0	207
PVC-VRT-A 102X138 YE	28229.8	Yellow	10	102x138	1	Self-adhesive	28041.0	207
PVC-VRT-A 102X138 YE	28229.6	Yellow	10	102x138	1	Self-adhesive	28041.0	207

Device and installation markers PVC-VRT-RH

The **PVC-VRT-RH** markers have holes and are made from rigid PVC. They are used for making custom ratings plates (e.g. containing the company logo, technical data, identification numbers, or CE labels).

The blank cards can be easily labelled using the **TTPCard** thermal-transfer printer.



Characteristics	
Material	PVC
Temperature range	-30°C to +60°C
Processing temperature	+10°C to +40°C
Flamm. class acc. to UL 94	V-0
Features	Silicone-free
Material thickness	0.9 mm
Attachment holes	4 mm
Colour variants	

Type	Cat. no.	Colour	Qty.	Size WxL, mm	Markers per card	Hole	Cat. no. Inlay	SW Code
PVC-VRT-RH 15X52 WH	28199.7	White	140	15x52	14	2	28041.0	831
PVC-VRT-RH 15X80 WH	28200.7	White	70	15x80	7	2	28041.0	828
PVC-VRT-RH 15X80 YE	28200.8	Yellow	71	15x80	7	2	28041.0	828
PVC-VRT-RH 25X50 WH	28201.7	White	80	25x50	8	2	28041.0	860
PVC-VRT-RH 25X50 YE	28201.8	Yellow	80	25x50	8	2	28041.0	860
PVC-VRT-RH 25X50 GR	28201.6	Grey	80	25x50	8	2	28041.0	860
PVC-VRT-RH 25X75 WH	28202.7	White	40	25x75	4	2	28041.0	809
PVC-VRT-RH 25X75 YE	28202.8	Yellow	40	25x75	4	2	28041.0	809
PVC-VRT-RH 25X80 WH	28203.7	White	40	25x80	4	2	28041.0	832
PVC-VRT-RH 25X100 WH	28204.7	White	100	25x100	4	2	28041.0	206
PVC-VRT-RH 25X100 YE	28204.8	Yellow	100	25x100	4	2	28041.0	206
PVC-VRT-RH 35X50 WH	28205.7	White	60	35x50	6	2	28041.0	833
PVC-VRT-RH 35X80 WH	28206.7	White	30	35x80	3	2	28041.0	827
PVC-VRT-RH 35X80 YE	28206.8	Yellow	30	35x80	3	2	28041.0	827
PVC-VRT-RH 35X100 WH	28207.7	White	30	35x100	3	2	28041.0	818
PVC-VRT-RH 35X100 YE	28207.8	Yellow	30	35x100	3	2	28041.0	818
PVC-VRT-RH 50X100 WH	28208.7	White	20	50x100	2	4	28041.0	811
PVC-VRT-RH 50X100 YE	28208.8	Yellow	20	50x100	2	4	28041.0	811
PVC-VRT-RH 50X100 GR	28208.6	Grey	20	50x100	2	4	28041.0	811
PVC-VRT-RH 75X120 WH	28209.7	White	25	75x120	1	4	28041.0	816
PVC-VRT-RH 75X120 YE	28209.8	Yellow	25	75x120	1	4	28041.0	816
PVC-VRT-RH 105X110 WH	28210.7	White	10	105x110	1	4	28041.0	859
PVC-VRT-RH 105X110 YE	28210.8	Yellow	10	105x110	1	4	28041.0	859
PVC-VRT-RH 105X110 GR	28210.6	Grey	10	105x110	1	4	28041.0	859
PVC-VRT-RH 29X140 WH	28211.7	White	30	29x140	3	2	28041.0	834
PVC-VRT-RH 35X142 WH	28212.7	White	30	35x142	3	2	28041.0	835
PVC-VRT-RH 50X140 WH	28213.7	White	50	50x140	2	4	28041.0	872
PVC-VRT-RH 82X142 WH	28214.7	White	25	82x142	1	4	28041.0	836

Device and installation markers PVC-VRT-AH

The PVC-VRT-AH markers are made from rigid PVC. They are used for making ratings plates (e.g. containing the company logo, technical data, identification numbers, or CE labels).

They are easy to attach because of their adhesive back.

The blank cards can be easily labelled using the **TTPCard** thermal-transfer printer.



Characteristics	
Material	PVC
Temperature range	-30°C to +60°C
Processing temperature	+10°C to +40°C
Flamm. class acc. to UL 94	V-0
Features	Silicone-free
Material thickness	0.9 mm
Attachment holes	4 mm
Colour variants	⑦ ⑧

Type	Cat. no.	Colour	Qty.	Size WxL, mm	Markers per card	Application	Hole for rivet/screw	Cat. no. Inlay	SW Code
PVC-VRT-AH 25X50 WH	28232.7	White	80	25x50	8	Self-adhesive	2	28041.0	860
PVC-VRT-AH 25X75 WH	28233.7	White	40	25x75	4	Self-adhesive	2	28041.0	809
PVC-VRT-AH 25X80 WH	28236.7	White	40	25x80	4	Self-adhesive	2	28041.0	832
PVC-VRT-AH 25X100 WH	28235.7	White	40	25x100	4	Self-adhesive	2	28041.0	206
PVC-VRT-AH 35X100 YE	28232.8	Yellow	30	35x100	3	Self-adhesive	2	28041.0	818
PVC-VRT-AH 50X100 WH	28234.7	White	20	50x100	2	Self-adhesive	4	28041.0	811

Cable marker sleeves KH-PVC

The **KH-PVC** cable marker sleeves, when used together with the **PVC-TPMF** markers, provide a convenient and quick solution for marking wires.

- The sleeve is easier to attach to the wire because of the special bellows shape of the cable marker sleeve.
- When used together, the **PVC-TPMF** and the **KH-PVC** cable marker sleeves ensure that your labelling is properly protected against environmental influences.
- The oval-shaped pocket makes the labels easy to insert before or after installation.
- The elastic pocket both protects and secures the marker.
- Can be used for marking wires up to 240 mm².
- Available in four different lengths and seven wire diameters.



Characteristics	
Material	PVC
Temperature range	-40°C to +80°C
Flamm. class acc. to UL 94	V-0
Features	Contains no silicone, cadmium, lead or teflon
Corresponding markers	PVC-TPMF, PC-TPMF-HF and MC ESS series

Type	Cat. no.	Colour	Qty.	Length (mm)	Wire cross-section, mm ² **	Outer diameter of insulation, mm
KH-PVC 0.5/12	28285.0	Transparent	2000	12	0.25 - 0.5	1.3 - 2.2
KH-PVC 0.5/15	28286.0	Transparent	2000	15	0.25 - 0.5	1.3 - 2.2
KH-PVC 0.5/20	28287.0	Transparent	1000	20	0.25 - 0.5	1.3 - 2.2
KH-PVC 0.5/30	28288.0	Transparent	1000	30	0.25 - 0.5	1.3 - 2.2
KH-PVC 2.5/12	28292.0	Transparent	1000	12	0.5 - 2.5	2 - 3.7
KH-PVC 2.5/15	28293.0	Transparent	1000	15	0.5 - 2.5	2 - 3.7
KH-PVC 2.5/20	28294.0	Transparent	1000	20	0.5 - 2.5	2 - 3.7
KH-PVC 2.5/30	28295.0	Transparent	1000	30	0.5 - 2.5	2 - 3.7
KH-PVC 4/12	28299.0	Transparent	1000	12	2.5 - 4	3.4 - 4.3
KH-PVC 4/15	28300.0	Transparent	1000	15	2.5 - 4	3.4 - 4.3
KH-PVC 4/20	28301.0	Transparent	500	20	2.5 - 4	3.4 - 4.3
KH-PVC 4/30	28302.0	Transparent	500	30	2.5 - 4	3.4 - 4.3
KH-PVC 10/12	28306.0	Transparent	500	12	4 - 10	4 - 6.3
KH-PVC 10/15	28307.0	Transparent	500	15	4 - 10	4 - 6.3
KH-PVC 10/20	28308.0	Transparent	500	20	4 - 10	4 - 6.3
KH-PVC 10/30	28309.0	Transparent	500	30	4 - 10	4 - 6.3
KH-PVC 25/12	28313.0	Transparent	500	12	10 - 25	6 - 10
KH-PVC 25/15	28314.0	Transparent	500	15	10 - 25	6 - 10
KH-PVC 25/20	28315.0	Transparent	500	20	10 - 25	6 - 10
KH-PVC 25/30	28316.0	Transparent	500	30	10 - 25	6 - 10
KH-PVC 70/12	28317.0	Transparent	250	12	25 - 70	9 - 15
KH-PVC 70/15	28318.0	Transparent	250	15	25 - 70	9 - 15
KH-PVC 70/20	28319.0	Transparent	250	20	25 - 70	9 - 15
KH-PVC 70/30	28320.0	Transparent	150	30	25 - 70	9 - 15
KH-PVC 240/12	28321.0	Transparent	125	12	70 - 240	14 - 26
KH-PVC 240/15	28322.0	Transparent	125	15	70 - 240	14 - 26
KH-PVC 240/20	28323.0	Transparent	50	20	70 - 240	14 - 26
KH-PVC 240/30	28324.0	Transparent	50	30	70 - 240	14 - 26

** = This specified cross-section is a guideline. Wires with the same cross-section may have different outer diameters. Therefore, we recommend using the diameter as the reference value.

Cable marker sleeves KH-PVC-HF (halogen-free)

The halogen-free **KH-PVC-HF** cable marker sleeves, used in combination with the **PVC-TPMF-HF** markers, enable cables to be labelled quickly and conveniently.

- The sleeve is easier to attach to the wire because of the special bellows shape of the cable marker sleeve.
- When used together, the **PVC-TPMF-HF** and the **KH-PVC-HF** cable marker sleeves ensure that your labels are protected from environmental influences.
- Oval-shaped pocket makes the labels easy to insert before or after installation.
- The elastic pocket both protects and secures the marker.
- Can be used for marking wires up to 240 mm².
Available in four different lengths and seven wire diameters.



Characteristics	
Material	EVA copolymer
Temperature range	-40°C to +80°C
Flamm. class acc. to UL 94	HB
Features	Contains no halogen, silicon, cadmium, lead or teflon
Corresponding markers	PVC-TPMF, PC-TPMF-HF and MC ESS series

Type	Cat. no.	Colour	Qty.	Length, mm	Wire cross-section, mm ² **	Outer diameter of insulation, mm
KH-PVC-HF 0.5/12	28289.0	Transparent	2000	12	0.25 - 0.5	1.3 - 2.2
KH-PVC-HF 0.5/15	28290.0	Transparent	2000	15	0.25 - 0.5	1.3 - 2.2
KH-PVC-HF 0.5/20	28291.0	Transparent	1000	20	0.25 - 0.5	1.3 - 2.2
KH-PVC-HF 2.5/12	28296.0	Transparent	1000	12	0.5 - 2.5	2 - 3.7
KH-PVC-HF 2.5/15	28297.0	Transparent	1000	15	0.5 - 2.5	2 - 3.7
KH-PVC-HF 2.5/20	28298.0	Transparent	1000	20	0.5 - 2.5	2 - 3.7
KH-PVC-HF 4/12	28303.0	Transparent	1000	12	2.5 - 4	3.4 - 4.3
KH-PVC-HF 4/15	28304.0	Transparent	1000	15	2.5 - 4	3.4 - 4.3
KH-PVC-HF 4/20	28305.0	Transparent	500	20	2.5 - 4	3.4 - 4.3
KH-PVC-HF 10/12	28310.0	Transparent	500	12	4 - 10	4 - 6.3
KH-PVC-HF 10/15	28311.0	Transparent	500	15	4 - 10	4 - 6.3
KH-PVC-HF 10/20	28312.0	Transparent	500	20	4 - 10	4 - 6.3

** = This specified cross-section is a guideline. Wires with the same cross-section may have different outer diameters. Therefore, we recommend using the diameter as the reference value.

Holder GSU-H

The **GSU-H** holders are used to label buttons and other components in facilities.

Labelling markers from the **PVC-TAP** series are quick and easy to snap into the **GSU-H** holders. They can then be attached using either rivets, screws or cable ties.

The transparent **STR** protective strips provide extra protection for the labelling markers. They are placed over the markers after the markers are snapped into position.



Characteristics	GSU-H..	STR-MC-GSU..
Material	Polyamide	PVC
Temperature range	-40°C to +105°C	-30°C to +60°C
Flamm. class acc. to UL 94	V-2	B-1
Features:	Halogen-free, silicone-free	Halogen-free
Corresponding markers	PVC-TAP and PVC-TAP-CCS series	

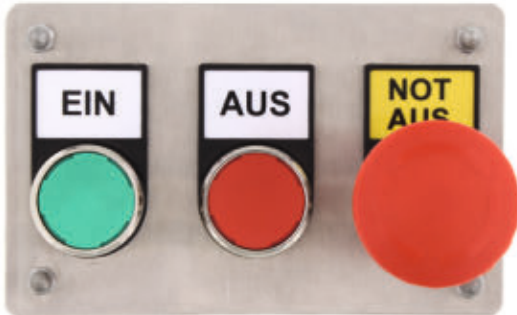
Type	Cat. no.	Colour	Qty.	Dimensions, WxL, mm	Dimensions Marker, mm	Attachment
GSU-H 17x15 BK	3827.4	Black	80	20x17	17x15	screw (M3.5), cable tie (KB140)
GSU-H 17x15 BK	3828.4	Black	80	30x17	27x15	screw (M3.5), cable tie (KB140)
GSU-H 49x15 BK	3829.4	Black	40	52.2x17.2	49x15	screws (two M3.5), cable tie (KB140)
GSU-H 60x15 BK	3830.4	Black	40	63.2x17.2	60x15	screws (two M3.5), cable tie (KB140)
GSU-H 67x15 BK **	28278.4	Black	100	70x17	67x15	screws (two M3.5), cable tie (KB140)
GSU-H 60x30 BK	3850.4	Black	30	63.2x32.6	60x30	screws (two M3.5), cable tie (KB140)
GSU-H 85.4x54 BK	3851.4	Black	30	88.6x56.6	85.4x54	screws (two M5), cable tie (KB140)
Protective strips						
STR-MC-GSU 17x15 R	3860.0	Transparent	80	17x15	-	Snaps into GSU-H
STR-MC-GSU 27x15 R	3861.0	Transparent	80	27x15	-	Snaps into GSU-H
STR-MC-GSU 49x15 R	3862.0	Transparent	40	49x15	-	Snaps into GSU-H
STR-MC-GSU 60x15 R	3863.0	Transparent	40	60x15	-	Snaps into GSU-H
STR-MC-GSU 67x15 R	28325.4	Transparent	540	67x15	-	Snaps into GSU-H
STR-MC-GSU 60x30 R	3864.0	Transparent	30	60x30	-	Snaps into GSU-H
STR-MC-GSU 85.4x54 R	3865.0	Transparent	10	85.4x54	-	Snaps into GSU-H

** = Material GSU-H 67x15: Polycarbonate (-40 °C to + 130 °C, UL94 V-0)

Holder GSU-H

The **GST-H** holders are used to label buttons with a diameter of 22.5 mm.

Labelling markers from the **PVC-TAP** series are quick and easy to snap into the **GST-H** holders.



Characteristics	
Material	Polyamide
Temperature range	-40°C to +105°C
Flamm. class acc. to UL 94	V-2
Features	Halogen-free, silicone-free
Corresponding markers	PVC-TAP series

Type	Cat. no.	Colour	Qty.	Dimensions Markers	Corresponding Markers
GST-H 27x8 BK	9802.4	Black	40	27x8	PVC-TAP 8.2x27
GST-H 27x12.5 BK	9803.4	Black	40	27x12.5	-
GST-H 27x18 BK	9804.4	Black	40	27x18	PVC-TAP 18x27, PVC-TAP 17.5x27.8
GST-H 27x27 BK	9805.4	Black	40	27x27	-

Profiles PS9 and PS15

The **PS9** and **PS15** marking profiles are a good alternative for labelling components directly.

The **PS 9** is used to hold labelling markers from the **PVC-TAPW** series, with a width of 9 mm.

The **PS 15** is used to hold labelling markers from the **PVC-TAP** series, with a width of 15 mm.

Individual self-adhesive profiles can be cut to size. The marker can then be quickly and easily snapped into the profile.

The transparent **STR** protective strips and the transparent **AD-PS** covers provide extra protection for the labelling markers. They are placed over the markers after the markers are snapped into position.



Characteristics	
Material	PVC
Temperature range	+10°C to +90°C
Flamm. class acc. to UL 94	V-0
Features	Silicone-free
Corresponding markers	PVC-TAP and PVC-TAPW series

Type	Cat. no.	Colour	Qty.	Length mm	Matching width Marker, mm	Attachment
PS 15X430 K BK	28326.4	Black	25	430	15	Self-adhesive
PS 15X650 K BK	28328.4	Black	25	650	15	Self-adhesive
PS 15X1.000 K BK	28327.4	Black	25	1000	15	Self-adhesive
Cover						
AD-PS 15X430	28279.0	Transparent	25	430	15	Snaps into PS
AD-PS 15X650	28281.0	Transparent	25	650	15	Snaps into PS
AD-PS 15X1.000	28280.0	Transparent	25	1000	15	Snaps into PS
Protective strips						
STR-PS 15X1.000	28282.0	Transparent	25	1000		Snaps into PS

Type	Cat. no.	Colour	Qty.	Length mm	Matching width Marker, mm	Application
PS 9X1.000 BK	28331.4	Black	25	1000	9	Screw
PS 9X1.000 K GR	28329.6	Grey	25	1000	9	Self-adhesive
PS 9X1.000 K BK	28330.4	Black	25	1000	9	Self-adhesive
Cover						
AD-PS 9X1.000	28283.0	Transparent	25	1000	9	Snaps into PS
Protective strips						
STR-PS 9X1.000	28284.0	Transparent	25	1000	9	Snaps into PS

Selection lists of terminal markers for CONTA-CLIP terminal blocks

CONTA-CLIP											CONTA-CLIP											
Size, mm	3.5x5	5x5	5x10	5x10	5x12	6x5	6x12	8x5	8x12	10x12	Size, mm	3.5x5	5x5	5x10	5x10	5x12	6x5	6x12	8x5	8x12	10x12	
Marker type	PC-SB 3.5X5/56 WH (28350.7)										PC-SB 3.5X5/56 WH (28350.7)											
Terminal type	PC-SB 5X5/48 WH (28342.7)										PC-SB 5X5/48 WH (28342.7)											
Terminal type	PC-BSTR 5x10/48 MI WH (28352.7)										PC-BSTR 5x10/48 MI WH (28352.7)											
Terminal type	PC-BSTR 5X10/48 WH (28346.7)										PC-BSTR 5X10/48 WH (28346.7)											
Terminal type	PC-BSTR 5X12/48 WH (28345.7)										PC-BSTR 5X12/48 WH (28345.7)											
Terminal type	PC-SB 6X5/40 WH (28343.7)										PC-SB 6X5/40 WH (28343.7)											
Terminal type	PC-BSTR 6X12/40 WH (28344.7)										PC-BSTR 6X12/40 WH (28344.7)											
Terminal type	PC-SB 8X5/32 WH (28347.7)										PC-SB 8X5/32 WH (28347.7)											
Terminal type	PC-BSTR 8X12/32 WH (28348.7)										PC-BSTR 8X12/32 WH (28348.7)											
Terminal type	PC-BSTR 10X12/24 WH (28349.7)										PC-BSTR 10X12/24 WH (28349.7)											
Tension-spring terminals											PushIn terminals											
ZIKD 2.5	X	X									FDLI	X	X									
ZIZA	X	X									FDLIS	X	X									
ZMP 1.5	X	X									FIK 2.5	X	X									
ZRK 2.5	X	X									FRK 1.5	X										
ZRK 4	X	X	X								FRK 2.5	X	X	X								
ZRK 6	X	X	X				X				FRK 4	X	X	X		X						
ZRK 10	X	X	X					X			FRKD 2.5	X	X	X		X						
ZRK 16	X	X	X					X			FRKI 2.5-4	X	X			X						
ZRKD 2.5	X	X									FRKI 6-10	X	X			X		X				
ZRKS 2.5	X	X									FSIK 4	X	X			X						
ZSL 2.5	X	X									FSL 1.5	X										
ZSL 4	X	X	X								FSL 2.5	X	X	X								
ZSL 6	X	X	X					X			FSL 4	X	X	X		X						
ZSL 10	X	X	X					X			FSLD 2.5	X	X	X		X						
ZSL 16	X	X	X					X			FSLI 2.5-4	X	X	X		X						
ZSLD 2.5	X	X									FSLI 6-10	X	X	X		X		X				
ZSLN 2.5	X	X									FTRK 2.5	X	X									
ZSRK 2.5	X	X									PRK 1.5	X										
ZST 2.5	X	X									PRK 2.5	X	X	X		X						
ZSTK 2.5	X	X									PRK 4	X	X	X		X	X	X				
ZTRK 2.5	X	X									PRK 6	X	X	X		X	X	X	X	X		
ZVMAK 2.5	X	X									PRK 10	X	X	X		X	X	X	X	X	X	
											PRK 16	X	X	X		X	X	X	X	X	X	
End stops											Marker holders											
EH 1	X	X									SchT 4/8	X	X	X	X	X						
EH 2-Z	X	X									SchT 6/12	X	X	X	X	X						
EH 4	X	X	X	X							SchT 12	X	X	X	X	X	X	X				
ES 15	X	X									SchT 11	X	X	X	X	X						
ES 32/35 Combi	X	X	X	X	X						ZBA 1	X	X	X	X	X						
ES 35	X	X	X	X	X	X	X				ZBA 2	X	X	X	X	X						
ES 35/2/K	X	X	X	X	X	X	X	X	X		ZBA 2/Z	X	X	X								
ES 35/K/ST	X	X	X	X	X	X	X	X	X		ZBA 2/Z/H	X	X	X								
ES 32	X	X	X	X	X	X	X	X	X		ZBA 3	X	X	X	X	X						
ES 32/2/K	X	X	X	X	X	X	X	X	X													
ES 32/K/ST	X	X	X	X	X	X	X	X	X													
SES35	X	X	X	X	X	X	X	X	X	X												
SHES 35	X	X	X	X	X	X	X	X	X													
SH/SAB	X	X	X	X	X	X	X	X	X													
ZEH 1	X	X	X	X	X																	
ZES 15	X	X	X	X	X																	
ZES 35	X	X	X	X	X	X	X															
ZES35/2	X	X	X	X	X																	

Selection list of terminal markers for other manufacturers

ALLEN-BRADLEY										CABUR													
Size, mm		5x10	5x15	5x7	5x10	6x12					Size, mm		5x10	5x10	5x10	6x10	5x12	4.2x9					
Marker type		PC-CPM-01 E 5X10 (28239.7) PC-CPM-01 E 5X15 (28240.7) PC-CPM-01 E 5X7 (28238.7) PC-CPM-02 E 5X10 (28245.7) PC-CPM-11 E 6X12 (28262.7)										Marker type		PC-CPM-03 E 5X10 - (28247.7) PC-CPM-03 E 5X10 (28351.7) PC-CPM-04 E 5X10 (28250.7) PC-CPM-04 6X10 (28252.7) PC-CPM-10 E 5X12 (28261.7) PC-CPM-12 4.2X9 (28265.7)									
Terminal type												Terminal type		PCE.4/6/... PCE.4/X... SFR.4/6...SFR.4/6/ C230 SFO.4/6...SFO.4/6/ C230 FPC.10/16 FPL.10/16... FPL.10/16/C230 SFR.4/D1A...SFR.4/ D3A MPS.2/4/SW... MPS.2/4/SV MPS.4/6...MPS.4/6/VS SCB.4/6...SCB.&/10/ CD AFO.2/1+1... AFO.2/2+2/TP PDF.2 FDP.2 CVF.4/6...CVF.4/6/TP TC/PO VPC.2/4 VPD.2/ GPM.95/BB... GPM.240/300/CC GPA.70...GPA.240 ACB.70/BB... ACB.185/240/CC BCA.70/BB... BCA.120/185/CC MBL.50/6... MBL.150/12 TEO.2/4 TEO.4/6 CBE.2/4 TE.4/6/D...TE.50/D... TE.50/O RN.1/2.5 RN.2/4 RP.4/6 RFI.2 TR.2/4 TR.4/6 MAC.6/10... MAC.6/10/N									
1492 -M						X						X	X	X	X	X							
1492 -SM						X						X	X	X									
BECKHOFF																							
Size, mm		4.2x9									Size, mm		4.2x9										
Marker type		PC-CPM-12 4.2X9 (28265.7)								Marker type													
Terminal type		PC-CPM-12 4.2X9 (28265.7)								Terminal type													
KL 9010		X									X	X	X										
CABUR																							
Size, mm		5x10	5x10	5x10	6x10	5x12	4.2x9				Size, mm		5x10	5x10	5x10	6x10	5x12	4.2x9					
Marker type		PC-CPM-03 E 5X10 - (28247.7) PC-CPM-03 E 5X10 (28351.7) PC-CPM-04 E 5X10 (28250.7) PC-CPM-04 6X10 (28252.7) PC-CPM-10 E 5X12 (28261.7) PC-CPM-12 4.2X9 (28265.7)										Marker type											
Terminal type												Terminal type											
CBD.2/4		X	X	X	X						X	X	X										
CBD.4/6		X	X	X	X	X	X				X	X	X										
CBD.2/4/SH		X	X	X	X						X	X	X										
CBD.4/6/SH		X	X	X	X	X	X				X	X	X										
CBD.6/10		X	X	X	X						X	X	X										
CBD.10/6		X	X	X	X						X	X	X										
CBD. 16/25		X	X	X	X						X	X	X										
CBD. 35		X	X	X	X						X	X	X										
CBC.2/4		X	X	X	X						X	X	X	X									
CBC.4/6		X	X	X	X	X					X	X	X	X									
CBC 35/50		X	X	X							X	X	X										
DAS.4/6...DAS.4/6/SS		X	X	X							X	X	X										
DSS.4/6		X	X	X	X	X					X	X	X										
CBR.2/4		X	X	X	X						X	X	X	X									
FVS.4/6		X	X	X	X	X					X	X	X										
FFS.4/6		X	X	X	X	X					X	X	X										
TLS.2/4		X	X	X							X	X	X										
TLE.2/4		X	X	X							X	X	X										
TLD.2/4		X	X	X							X	X	X										
TDE.2/4		X	X	X							X	X	X										

Selection list of terminal markers for other manufacturers

CABUR							CONNECTWELL												
Size, mm	5x10	5x10	5x10	6x10	5x12	4.2x9	Size, mm	5x10	5x15	5x10	5x7	5x10	5x10	5x10	5x10	5x10	5x12	4.2x9	
Marker type	PC-CPM-03 E 5X10 (28247.7) PC-CPM-03 E 5X10 (28351.7) PC-CPM-04 E 5X10 (28250.7) PC-CPM-04 6X10 (28252.7) PC-CPM-10 E 5X12 (28261.7) PC-CPM-12 4.2X9 (28265.7)						Marker type	PC-CPM-01 E 5X10 (28239.7) PC-CPM-01 E 5X15 (28240.7) PC-CPM-01 E 5X10 (28239.8) PC-CPM-01 E 5X7 (28238.7) PC-CPM-03 E 5X10 (28247.7) PC-CPM-03 Z 5X10 (28351.7) PC-CPM-04 E 5X10 (28250.7) PC-CPM-04 E 5X10 (28250.8) PC-CPM-04 E 5X10 (28251.7) PC-CPM-10 E 5X12 (28261.7) PC-CPM-12 4.2X9 (28265.7)											
Terminal type	PC-CPM-03 E 5X10 (28247.7) PC-CPM-03 E 5X10 (28351.7) PC-CPM-04 E 5X10 (28250.7) PC-CPM-04 6X10 (28252.7) PC-CPM-10 E 5X12 (28261.7) PC-CPM-12 4.2X9 (28265.7)						Terminal type	PC-CPM-01 E 5X10 (28239.7) PC-CPM-01 E 5X15 (28240.7) PC-CPM-01 E 5X10 (28239.8) PC-CPM-01 E 5X7 (28238.7) PC-CPM-03 E 5X10 (28247.7) PC-CPM-03 Z 5X10 (28351.7) PC-CPM-04 E 5X10 (28250.7) PC-CPM-04 E 5X10 (28250.8) PC-CPM-04 E 5X10 (28251.7) PC-CPM-10 E 5X12 (28261.7) PC-CPM-12 4.2X9 (28265.7)											
CAM...CAM/C	X		X		X		CDB4/2(1)					X	X	X	X	X			
NCS	X		X		X		CMC2-2					X	X	X	X	X			
NCV	X		X		X		CGT6N					X		X	X				
CNT.6...CNT.35	X		X		X		CSCG10T					X		X	X				
HMM.1/2.5... HMM.1/2.5/2+2						X	CGT16N					X		X	X				
HMM.2/4... HMM.6/10					X		AS2.5/4					X	X	X	X	X			
HTE.2/4...HTE.6/10					X		CTU4U					X	X	X	X	X			
HMD.2N...HMD.2/4					X	X	CTS6UCR					X		X	X				
HMS.2/4					X		CTS4UN					X	X	X	X	X			
HMF.4/6...HMF.4/6/ L115					X		CT25UCR					X		X	X				
EDM.2/4	X		X		X		CMDB4/2					X		X	X				
EDM.4/6... EDM.70/50/BC	X		X	X			CSDL6U					X		X	X				
SV.2...SV.2/VS	X		X		P		CSC2.5T1-2					X	X	X	X	X			
SV.4/6...SV.10/16	X		X		X		AS6					X		X	X				
CPS.4/6	X		X		X		CT25U					X		X	X				
SCX.10/16...SCX .10/16-PI	X		X		X		CGT4UN					X	X	X	X	X			
SFC.10/16	X		X		X		CGT10N					X		X	X				
SFL.10/16	X		X		X		DDFL4UEL24V					X		X	X				
FLD.10/16/FS... FLD.10/16/D	X		X		X		DDFL4UEL					X		X	X				
VLM.10/16... VLM.10/16/O	X		X		X		CSC2.5T2-2					X	X	X	X	X			
VL.16...VL.16/O-M	X		X		X		CTS10U					X		X	X				
TC/DIN	X		X		X		AS4/3					X		X	X				
VNF.6/10...VNF.6/10/ STP	X		X		X		CTS10USC					X		X	X				
CDA.70/BC... CDA.185/BB	X		X		X		AS2.5/3					X	X	X	X	X			
BTU	X		X		X		CENC16					X		X	X				
BT/3	X		X		X		DDFL4U					X		X	X				
BT/2	X		X		X		CTS2.5UNCR					X	X	X	X	X			
BT/DIN/PO	X		X		X		CDTTU					X		X	X				
							CSC4T1-2					X	X	X	X	X			
							CKT4U					X		X	X				
							CSC4T2-2					X		X	X				
							CSCG4T					X		X	X				
							CTS6U					X		X	X				
							CSC4T					X		X	X				
							CSCG2.5T					X	X	X	X	X			
							CSFL6U					X		X	X				
							CENC35					X		X	X				
							CGT10U					X		X	X				
							CSDL4U					X		X	X				
							CSC6T					X		X	X				
							CGT4U					X		X	X				
							AS4/4					X		X	X				
							AS4					X		X	X				
							CTS4UNCR					X		X	X				
							CTS6USC					X		X	X				
							STH4					X		X	X				

Selection list of terminal markers for other manufacturers

CONNECTWELL													LEGRAND												
Size, mm													Size, mm												
Marker type													Marker type												
Terminal type													Terminal type												
CTS16U													Viking 3 series												
CSCG16T																									
CSC6T1-2																									
CSC2.5T																									
ODL4U																									
CMC1-2																									
CDB6/2																									
ODL4UA																									
AS2.5																									
ADL2.5																									
CDB25/2																									
CTS25U																									
CDTTUSH																									
CTS35UN																									
CT35UCR																									
CTS10UCR																									
CMDB10/2																									
CTS25UN																									
CMDB6/2																									
CGT35U																									
CSC16T																									
CTS95U																									
CSC10T																									
CTS35U																									
CTS16UCR																									
CTS50U																									
CSFL4U																									
STH4DT																									
CDB10/2																									
ASF4																									
DDFL4UE24V																									
CSFL4UL24V																									
DDDL4U																									
DDFL4ULR																									
CTS4UNCR																									
CTS2.5UN																									
CMDB6/2																									
CTS2.5M																									
CTS45C																									
CTS6																									
CTS65C																									
CTSSRN5																									
CTS10SC																									
CTS16																									
CTS10																									

Selection list of terminal markers for other manufacturers

PHOENIX CONTACT										PHOENIX CONTACT												
Size, mm	5x10	3x10	5x10	5x10	6x10	8x10	5x10	6.3x105			Size, mm	5x10	3x10	5x10	5x10	6x10	8x10	5x10	6.3x105			
Marker type	PC-CPM1-03 E 5X10 (28247.7)									PC-CPM1-03 E 5X10 (28247.7)												
Terminal type	PC-CPM1-04 E 3X10 (28249.7)									PC-CPM1-04 E 3X10 (28249.7)												
	PC-CPM1-04 E 5X10 (28250.7)									PC-CPM1-04 E 5X10 (28250.7)												
	PC-CPM1-04 5X10 (28251.7)									PC-CPM1-04 5X10 (28251.7)												
	PC-CPM1-04 6X10 (28252.7)									PC-CPM1-04 6X10 (28252.7)												
	PC-CPM1-04 8X10 (28253.7)									PC-CPM1-04 8X10 (28253.7)												
	PC-CPM1-07 E 5X10 (28259.7)									PC-CPM1-07 E 5X10 (28259.7)												
	PVC-CPMF 6.3X105X0.5 (28270.7)									PVC-CPMF 6.3X105X0.5 (28270.7)												
DOKD 1.5 - TG	X	X	X								SLKK 5 - LA	X	X	X	X							
E - UK	X		X								SSK 0525 KER-EX	X	X	X	X							
GBS 5-UK/B	X		X	X							SSK 110 KER-EX	X	X	X	X							
GTF 76/230	X		X								SSK 116 KER-EX	X	X	X	X							
IBIL ...	X		X								ST.....	X	X	X	X	X	X	X	X			
K4 - SP	X		X	X							STU.....	X	X	X	X	X	X	X	X			
MBK 3/ E - Z	X		X	X							STS...	X	X	X	X	X	X	X	X			
MBK 3/ E - Z -PE	X		X								STI....	X	X	X	X	X	X	X	X			
MBK 6 / E	X		X	X	X						STN...	X	X	X	X	X	X	X	X			
MBKKB 2.5	X		X	X							ST-BE			X								
MBKKB 2.5 - DIO	X		X	X							STTB		X		X	X	X					
MBKKB 2.5 - PV	X		X	X							STTBS....		X		X	X	X					
MBKKB 2.5 + V	X		X								TML...	X	X	X	X							
MBT 2.5	X		X								UDK 3	X	X	X								
MBT 2.5 PE	X		X								UDK 3 - PE	X	X	X								
MSLKG 6	X		X								UDK 4	X	X	X								
MTK - LOE	X		X	X	X						UDK 4 - ILA	X	X	X								
MTK - P/P	X		X	X	X						UDK 4 - ULA	X	X	X								
MTK - TP	X		X	X	X						UDK 4 MTK - P / P	X	X	X								
MTKD-...	X		X	X							UDK 4 TG	X	X	X								
MTTB 1.5		X									UDMTK 5 - P / P	X	X	X								
OTTA 2.5	X		X								UDMTK 5 - TWIN - P/P	X	X	X								
OTTA 2.5 PE	X		X								UHSK / S 2000	X	X	X								
OTTA 6	X		X	X							UHV 25	X	X	X								
OTTA 6 - PE	X		X	X							UHV 50	X	X	X								
OTTA 6 - T	X		X	X							UHV 95	X	X	X								
OTTA 25	X		X	X	X						UHV 150	X	X	X								
PIK 4 -L	X		X	X							UHV 240	X	X	X								
PIK 4 - L / L	X		X	X							UIK 16	X	X	X								
PIK 4 - L / LB	X		X	X							UIK 16 - PE / N	X	X	X								
PIK 4 - PE / L / NT	X		X	X							UIK 35 - PE / N	X	X	X								
PIK 4 - PE / L / NTB	X		X	X							UIKN 35	X	X	X								
PIK 4 PE / L / L	X		X	X							UISLKG 16	X	X	X								
PIK 4 PE / L / N	X		X	X							UISLKG 35	X	X	X								
PIK 6 - L / L	X		X	X							UK - FRONT 4	X	X	X								
PIK 6 - PE / L / L	X		X	X							UK - FRONT 4 - PE	X	X	X								
PIK 6 - PE / L / N	X		X	X							UK 1.5 N		X									
PT 1.5/S		X									UK 2.5	X	X	X								
PT2.5			X	X							UK 2.5 B	X	X									
PLC RSC	X		X								UK 2.5 LOER	X	X									
PLC BSC			X								UK 2.5 N	X	X	X								
QT 1.5	X	X	X								UK 3	X	X	X								
QT 1.5 TWIN	X		X								UK 3 - EX	X	X	X								
QT 1.5-PE	X		X								UK 3 - RETURN	X	X	X								
RTK	X		X	X	X						UK 3 - RETURN - PE	X	X	X								
SLKK 5	X		X	X	X																	

Selection list of terminal markers for other manufacturers

PHOENIX CONTACT										PHOENIX CONTACT												
Size, mm	5x10	3x10	5x10	5x10	6x10	8x10	5x10	6.3x105			Size, mm	5x10	3x10	5x10	5x10	6x10	8x10	5x10	6.3x105			
Marker type	PC-CPM-03 E 5X10 (28247.7)										Marker type	PC-CPM-03 E 5X10 (28247.7)										
Terminal type	PC-CPM-04 E 3X10 (28249.7)										Terminal type	PC-CPM-04 E 3X10 (28249.7)										
Terminal type	PC-CPM-04 E 5X10 (28250.7)										Terminal type	PC-CPM-04 E 5X10 (28250.7)										
Terminal type	PC-CPM-04 5X10 (28251.7)										Terminal type	PC-CPM-04 5X10 (28251.7)										
Terminal type	PC-CPM-04 6X10 (28252.7)										Terminal type	PC-CPM-04 6X10 (28252.7)										
Terminal type	PC-CPM-04 8X10 (28253.7)										Terminal type	PC-CPM-04 8X10 (28253.7)										
Terminal type	PC-CPM-07 E 5X10 (28259.7)										Terminal type	PC-CPM-07 E 5X10 (28259.7)										
Terminal type	PVC-CPMF 6.3X105X0.5 (28270.7)										Terminal type	PVC-CPMF 6.3X105X0.5 (28270.7)										
UK 3 - TWIN	x		x	x						UK 35 - PE / N	x		x		x							
UK 3 - TWIN - PE	x		x	x						UK SI	x		x		x							
UK 3 N	x		x	x						UKB 4 FS ...	x		x		x							
UK 4	x		x		x					UKD 4 PE	x		x		x							
UK 4 - TG	x		x		x					UKH 25	x		x		x							
UK 4 - TG -LOER - P/P	x		x		x					UKH 50	x		x		x							
UK 4 FS / FS	x		x		x					UKH 50 - PE / N	x		x		x							
UK 4 FSR	x		x		x					UKH 95	x		x		x							
UK 4 LOER	x		x		x					UKH 95 - PE / N	x		x		x							
UK 4 TP	x		x		x					UKH 150	x		x		x							
UK 4 TP / TP	x		x		x					UKH 240	x		x		x							
UK 5	x		x		x					UKK 3	x		x		x							
UK 5 - HESI	x		x		x					UKK 4 - FS	x		x		x							
UK 5 - MTK - P/P	x		x		x					UKK 4 - FS / FS	x		x		x							
UK 5 - R - L	x		x		x					UKK 5	x		x		x							
UK 5 - TWIN	x		x		x					UKK 5 - DIO	x		x		x							
UK 5 - TWIN - EX	x		x		x					UKK 5 - TG	x		x		x							
UK 5 / R - WIRE	x		x		x					UKK 5 -2 -DIO	x		x		x							
UK 5 N	x		x		x					UKK 5 -LA	x		x		x							
UK 5 RETURN	x		x		x					UKKB 3	x		x		x							
UK 5 RETURN - PE	x		x		x					UKKB 5	x		x		x							
UK 5 TWIN	x		x		x					UKKB 10	x		x		x							
UK 5 TWIN - PE	x		x		x					UKKB 10 / 2.5	x		x		x							
UK 6	x		x		x					UKKB 10 / 2.5 - PE	x		x		x							
UK 6 N	x		x		x					UKN 2.5	x		x		x							
UK 6.3 HESI	x		x		x					UKN 4	x		x		x							
UK 10	x		x		x					UKN 5	x		x		x							
UK 10 - DREHSI	x		x		x					UKN 10 (N)	x		x		x							
UK 10 - EX	x		x		x					UKN 16	x		x		x							
UK 10 - N-PE / N	x		x		x					UKN 16N	x		x		x							
UK 10 - PLUS	x		x		x					UKN 35	x		x		x							
UK 10 - PLUS - PE	x		x		x					UKSN	x		x		x							
UK 10 - TWIN	x		x		x					URK - ND	x		x		x							
UK 10 - TWIN - PE	x		x		x					URK - ND 2	x		x		x							
UK 10 N	x		x		x					URKN	x		x		x							
UK 10 RETURN	x		x		x					URKN - A	x		x		x							
UK 10 RETURN - PE	x		x		x					URKN / S	x		x		x							
UK 10.3 - HESI	x		x		x					URTK - BEN	x		x		x							
UK 16	x		x		x					URTK / S	x		x		x							
UK 16 - EX	x		x		x					URTK / S - BEN	x		x		x							
UK 16 - PE / N	x		x		x					URTK / SS	x		x		x							
UK 16 N	x		x		x					URTKD / SP	x		x		x							
UK 16 N - EX	x		x		x					USED 16	x		x		x							
UK 16 N - PE / N	x		x		x					USED 27	x		x		x							
UK 35	x		x		x					USEN 14	x		x		x							
UK 35 - EX	x		x		x					USEN 18	x		x		x							

Selection list of terminal markers for other manufacturers

PHOENIX CONTACT										
Size, mm	5x10	3x10	5x10	5x10	6x10	8x10	5x10	6.3x105		
Marker type	PC-CPM-03 E 5X10 (28247.7) PC-CPM-04 E 3X10 (28249.7) PC-CPM-04 E 5X10 (28250.7) PC-CPM-04 5X10 (28251.7) PC-CPM-04 6X10 (28252.7) PC-CPM-04 8X10 (28253.7) PC-CPM-07 E 5X10 (28259.7) PVC-CPMF 6.3X105X0.5 (28270.7)									
Terminal type										
USK / SGSK	X	X	X							
USK 4 FSR...	X	X	X							
USLKG 2.5	X	X								
USLKG 2.5 - N	X	X								
USLKG 3	X	X								
USLKG 4	X	X	X							
USLKG 5	X	X	X							
USLKG 10 (N)	X	X	X							
USLKG 16	X	X	X							
USLKG 16 N	X	X	X							
USLKG 35	X	X	X							
USLKG 50	X	X	X							
USLKG 95	X	X	X							
UT 4	X	X	X							
UT 4 BU	X	X	X							
UT 4 YE	X	X	X							
UT 4-MTD BU	X	X	X							
UT 4-MTD-PE	X	X	X							
UTTB 2.5		X								
UTK 35	X	X	X	X						
UXKK 4	X	X	X							
VBSN 4 FS	X	X								
VBST 4 FS / FS	X	X								
VIOK 1.5	X	X	X							
VIOK 1.5-2D	X	X	X							
VIOK 1.5-3D/PE	X	X	X							
VIOK 1.5-D/TG/D/PE	X	X	X					X		
VIOK 1.5-LA	X	X	X							
ZFDK 2.5	X	X								
ZFDK -PE	X	X								
ZFK 1.5		X								
ZFK 2.5 - PE	X	X								
ZFK 2.5 - PE / L / N	X	X								
ZFK 2.5 - TWIN	X	X								
ZFK 2.5 - TWIN - PE	X	X								
ZFK 4	X	X	X							
ZFK 4 - PE	X	X	X							
ZFK 4 - TG	X	X	X							
ZFK 6	X	X	X							
ZFK 16	X	X	X	X						
ZFK 14	X	X	X							
ZFKK 2.5 (-MT)	X	X	X							
ZFKN 4	X	X	X							

SCHLEGEL													
Size, mm	3x10	5x10	5x10	6x10	5x10								
Marker type	PC-CPM-04 E 3X10 (28249.7) PC-CPM-04 E 5X10 (28250.7) PC-CPM-04 5X10 (28251.7) PC-CPM-04 6X10 (28252.7) PC-CPM-07 E 5X10 (28259.7)												
Terminal type													
IK...	X	X	X	X	X								
SIEMENS													
Size, mm	3x10	5x10	8x10	5x10	5x10								
Marker type	PC-CPM-04 E 3X10 (28249.7) PC-CPM-04 E 5X10 (28250.7) PC-CPM-04 5X10 (28251.7) PC-CPM-04 6X10 (28252.7) PC-CPM-07 E 5X10 (28259.7)												
Terminal type													
8WH...	X	X	X		X								
8WA1 011-0DF21					X								
8WA1 011-0DG21					X								
8WA1 011-1BF23					X								
8WA1 011-1DF11					X								
8WA1 011-1DG11					X								
8WA1 011-2DG11					X								
8WA1 011-3DF21					X								
8WA1 011-3DG21					X								
8WA1 011-1DH11					X								
8WA1 221					X								
8WA1 741-2X					X								
8WA2 011-1DF20					X								
8WA2 011-1DG20					X								
8WA2 011-1DH20					X								
WAGO													
Size, mm	3x10	5x10	5x15	5x7	5x10	5x10	5x10	5x10	4.2x6	4.2x9	10.5x105	4.6x118	7x105
Marker type	PC-CPM-01 E 3X10 (28237.7) PC-CPM-01 E 5X10 (28239.7) PC-CPM-01 E 5X15 (28240.7) PC-CPM-01 E 5X7 (28238.7) PC-CPM-02 E 5X10 (28245.7) PC-CPM-03 E 5X10 (28247.7) PC-CPM-03 Z 5X10 (28351.7) PC-CPM-04 E 5X10 (28250.7) PC-CPM-12 4.2X6 (28264.7) PC-CPM-12 4.2X9 (28265.7) PVC-CPMF 10.5X105 (28274.7) PVC-CPMF 4.6X118 (28268.7) PVCF-VYB 7X105 (28277.7)												
Terminal type													
Top-Job 2000	X			X					X	X			
Top-Job 2001	X			X					X	X			
Top-Job 2002	X	X	X	X	X				X	X			
Top-Job 2004	X	X	X	X	X				X	X			
280-520						X	X	X					

Selection list of terminal markers for other manufacturers

WAGO										WAGO																			
Size, mm	3x10	5x10	5x15	5x7	5x10	5x10	5x10	5x10	4.2x6	4.2x9	10.5x105	4.6x118	7x105	Size, mm	3x10	5x10	5x15	5x7	5x10	5x10	5x10	5x10	4.2x6	4.2x9	10.5x105	4.6x118	7x105		
Terminal type	Marker type													Terminal type	Marker type														
	PC-CPM-01 E 3X10 (28237.7)	PC-CPM-01 E 5X10 (28239.7)	PC-CPM-01 E 5X15 (28240.7)	PC-CPM-01 E 5X7 (28238.7)	PC-CPM-02 E 5X10 (28245.7)	PC-CPM-03 E 5X10 (28247.7)	PC-CPM-03 Z 5X10 (28351.7)	PC-CPM-04 E 5X10 (28250.7)	PC-CPM-12 4.2X6 (28264.7)	PC-CPM-12 4.2X9 (28265.7)	PVC-CPMF 10.5X105 (28274.7)	PVC-CPMF 4.6X118 (28268.7)	PVCF-VWB 7X105 (28277.7)		PC-CPM-01 E 3X10 (28237.7)	PC-CPM-01 E 5X10 (28239.7)	PC-CPM-01 E 5X15 (28240.7)	PC-CPM-01 E 5X7 (28238.7)	PC-CPM-02 E 5X10 (28245.7)	PC-CPM-03 E 5X10 (28247.7)	PC-CPM-03 Z 5X10 (28351.7)	PC-CPM-04 E 5X10 (28250.7)	PC-CPM-12 4.2X6 (28264.7)	PC-CPM-12 4.2X9 (28265.7)	PVC-CPMF 10.5X105 (28274.7)	PVC-CPMF 4.6X118 (28268.7)	PVCF-VWB 7X105 (28277.7)		
280-560						X	X	X						280-902					X	X	X								
280-601						X	X	X						280-903					X	X	X								
280-607						X	X	X						280-904					X	X	X								
280-612						X	X	X						280-905					X	X	X								
280-622						X	X	X						280-906					X	X	X								
280-626						X	X	X						280-907					X	X	X								
280-641						X	X	X						280-912					X	X	X								
280-646						X	X	X						280-946					X	X	X								
280-649						X	X	X						281-601					X		X								
280-650						X	X	X						281-604					X		X								
280-651						X	X	X						281-607					X		X								
280-653						X	X	X						281/611					X		X								
280-654						X	X	X						281-631					X		X								
280-656						X	X	X						281-652					X		X								
280-671						X	X	X						281-653					X		X								
280-672						X	X	X						281-654					X		X								
280-676						X	X	X						281-657					X		X								
280-681						X	X	X						281-659					X		X								
280-683						X	X	X						281-660					X		X								
280-684						X	X	X						281-663					X		X								
280-685						X	X	X						281-664					X		X								
280-687						X	X	X						281-666					X		X								
280-695						X	X	X						281-668					X		X								
280-830						X	X	X						281-678					X		X								
280-831						X	X	X						281-679					X		X								
280-832						X	X	X						281-681					X		X								
280-833						X	X	X						281-683					X		X								
280-834						X	X	X						281-684					X		X								
280-835						X	X	X						281-685					X		X								
280-836						X	X	X						281-686					X		X								
280-837						X	X	X						281-687					X		X								
280-869						X	X	X						281-901					X		X								
280-870						X	X	X						281-902					X		X								
280-871						X	X	X						281-903					X		X								
280-874						X	X	X						281-904					X		X								
280-875						X	X	X						281-905					X		X								
280-876						X	X	X						281-906					X		X								
280-878						X	X	X						281-907					X		X								
280-880						X	X	X						281-912					X		X								
280-881						X	X	X						282-601					X		X								
280-882						X	X	X						282-604					X		X								
280-883						X	X	X						282-607					X		X								
280-884						X	X	X						282-681					X		X								
280-885						X	X	X						282-682					X		X								
280-901						X	X	X						282-684					X		X								

Selection list of terminal markers for other manufacturers

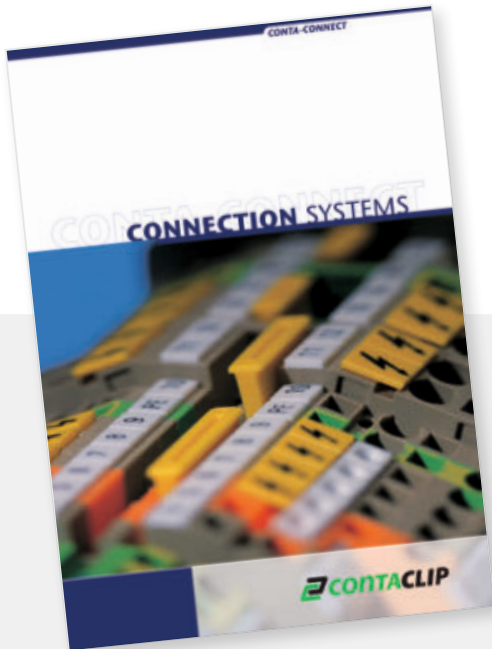
WAGO										
Size, mm	3x10	5x10	5x15	5x7	5x10	5x10	5x10	5x10	4.2x6	4.2x9
Marker type	PC-CPM-01 E 3X10 (28237.7)	PC-CPM-01 E 5X10 (28239.7)	PC-CPM-01 E 5X15 (28240.7)	PC-CPM-01 E 5X7 (28238.7)	PC-CPM-02 E 5X10 (28245.7)	PC-CPM-03 E 5X10 (28247.7)	PC-CPM-03 Z 5X10 (28351.7)	PC-CPM-04 E 5X10 (28250.7)	PC-CPM-12 4.2X6 (28264.7)	PC-CPM-12 4.2X9 (28265.7)
Terminal type	PVC-CPMF 10.5X105 (28274.7)	PVC-CPMF 4.6X118 (28268.7)	PVCF-VYB 7X105 (28277.7)							
282-687					X	X			X	
282-901					X	X			X	
282-902					X	X			X	
282-904					X	X			X	
282-907					X	X			X	
283-602					X	X			X	
283-604					X	X			X	
283-607					X	X			X	
283-609				X	X		X	X		
283-671					X	X			X	
283-672					X	X			X	
283-674					X	X			X	
283-677					X	X			X	
283-901					X	X			X	
283-902					X	X			X	
283-904					X	X			X	
283-907					X	X			X	
284-601					X	X				
284-604					X	X				
284-607					X	X				
284-681					X	X			X	
284-682					X	X			X	
284-684					X	X			X	
284-687					X	X			X	
284-901					X	X			X	
284-902					X	X			X	
284-904					X	X			X	
284-907					X	X			X	
285-601					X	X				
285-605					X	X				
698-281					X	X				
150-603							X			
290-681					X	X	X			
750-xxx	X	X	X	X					X	
769-237	X	X	X	X					X	
769-176	X									
870-501	X	X	X				X	X		
870-507	X	X	X				X	X		
870-531	X	X	X				X	X		
870-538	X	X	X				X	X		
870-551	X	X	X				X	X		
870-567	X	X	X				X	X		
870-831	X	X	X				X	X		
870-901	X	X	X				X	X		
880-901	X	X	X	X	X	X			X	

WAGO										
Size, mm	3x10	5x10	5x15	5x7	5x10	5x10	5x10	5x10	4.2x6	4.2x9
Marker type	PC-CPM-01 E 3X10 (28237.7)	PC-CPM-01 E 5X10 (28239.7)	PC-CPM-01 E 5X15 (28240.7)	PC-CPM-01 E 5X7 (28238.7)	PC-CPM-02 E 5X10 (28245.7)	PC-CPM-03 E 5X10 (28247.7)	PC-CPM-03 Z 5X10 (28351.7)	PC-CPM-04 E 5X10 (28250.7)	PC-CPM-12 4.2X6 (28264.7)	PC-CPM-12 4.2X9 (28265.7)
Terminal type	PVC-CPMF 10.5X105 (28274.7)	PVC-CPMF 4.6X118 (28268.7)	PVCF-VYB 7X105 (28277.7)							
WAGO I/O SYSTEM 750								X		
Series 870/X-Com/TJS/264								X		
WEIDMÜLLER										
Size, mm	3x10	5x10	5x15	5x7	5x10	5.2x105				
Marker type	PC-CPM-01 E 3X10 (28237.7)	PC-CPM-01 E 5X10 (28239.7)	PC-CPM-01 E 5X15 (28240.7)	PC-CPM-01 E 5X7 (28238.7)	PC-CPM-02 E 5X10 (28245.7)	PVC-CPMF 5.2X105 (28269.7)				
Terminal type										
AKZ 4../AKB 4...		X	X	X	X					
DLA 2.5		X	X	X	X					
DLD 2.5		X	X	X	X					
DLI 2.5		X	X	X	X					
EK 2.5		X	X	X	X					
EK 6		X	X	X	X					
EK 10		X	X	X	X					
EK 16		X	X	X	X					
EK 35		X	X	X	X					
EW15		X	X	X	X					
EW35		X	X	X	X					
EWK1		X	X	X	X					
EWK2		X	X	X	X					
IAK 1.5N 3L		X	X	X	X					
IDK 1.5	X	X		X	X					
IDK 1.5N	X	X	X	X	X					
IDK 1.5N/V	X	X	X	X	X					
IDU 1.5N	X	X	X	X	X					
IDU 2.5N	X	X	X	X	X					
IEK 1.5N	X	X		X	X					
IHK 1.5N	X	X		X	X					
IPE 1.5N	X	X		X	X					
IPE 2.5N		X		X	X					
ITR 1.5N		X		X	X					
MAK 2.5		X	X	X	X					
Mak 2.5/VLI 1.5		X	X	X	X					
NT 4		X	X	X	X					
NT 6		X	X	X	X					

Selection list of terminal markers for other manufacturers

WEIDMÜLLER												
Terminal type	Marker type						Size, mm					
	PC-CPM-01 E 3X10 (28237.7)	PC-CPM-01 E 5X10 (28239.7)	PC-CPM-01 E 5X15 (28240.7)	PC-CPM-01 E 5X7 (28238.7)	PC-CPM-02 E 5X10 (28245.7)	PVC-CPMF 5.2X105 (28269.7)	3x10	5x10	5x15	5x7	5x10	5.2x105
WPE 35		X	X	X	X							
WSI 6		X	X	X	X							
WSI 6/2		X	X	X	X							
WTL 6/1		X	X	X	X							
WTL 6/2		X	X	X	X							
WTR 2.5		X	X	X	X							
ZBLD 2.5/1.5	X	X		X	X							
ZDK 2.5/1.5	X	X		X	X							
ZDK 2.5/1.5 DU-PE	X	X		X	X							
ZDK 2.5/1.5 N-PE	X	X		X	X							
ZDK 2.5/1.5 V / E	X	X		X	X							
ZDK 2.5/1.5/E	X	X		X	X							
ZDK 2.5/1.5/E BL	X	X		X	X							
ZDK 2.5/1.5/LD/1	X	X		X	X							
ZDK 2.5/1.5/LD/2	X	X		X	X							
ZDK 2.5/1.5/N-PE/E	X	X		X	X							
ZDK 2.5/1.5D1...6	X	X		X	X							
ZDK 2.5/1.5N-DU	X	X		X	X							
ZDK 2.5/1.5N-DU/E	X	X		X	X							
ZDK 2.5/1.5N-DU-PE/E	X	X		X	X							
ZDK 2.5/1.5PE	X	X		X	X							
ZDK 2.5/1.5V		X		X	X							
ZDKB		X		X	X							
ZDKS		X		X	X							
ZDLD 2.5 / 1.5		X		X	X							
ZDLD 2.5 / 1.5 V		X		X	X							
ZDU 2.5 2.5/10		X	X	X	X							
ZDU 2.5/2x2AN		X		X	X							
ZDU 2.5/2x2AN (/E) BL		X		X	X							
ZDU 2.5/2x2AN/10		X		X	X							
ZDU 2.5/2x2AN/D		X		X	X							
ZDU 2.5/2x2AN/E		X		X	X							
ZDU 2.5/2x2AN/LD		X		X	X							
ZDU 2.5/3AN		X	X	X	X							
ZDU 2.5/3AN (/E) BL		X		X	X							
ZDU 2.5/3AN/10		X		X	X							
ZDU 2.5/3AN/E		X		X	X							
ZDU 2.5/4AN		X	X	X	X							
ZDU 2.5/4AN (/E) BL		X		X	X							
ZDU 2.5/4AN/10		X		X	X							
ZDU 2.5-2/3		X		X	X							
ZDU 2.5-2/3AN (/E) BL		X		X	X							
ZDU 2.5-2/4AN (/E)		X		X	X							

WEIDMÜLLER												
Terminal type	Marker type						Size, mm					
	PC-CPM-01 E 3X10 (28237.7)	PC-CPM-01 E 5X10 (28239.7)	PC-CPM-01 E 5X15 (28240.7)	PC-CPM-01 E 5X7 (28238.7)	PC-CPM-02 E 5X10 (28245.7)	PVC-CPMF 5.2X105 (28269.7)	3x10	5x10	5x15	5x7	5x10	5.2x105
ZDU 2.5-2/3AN (/E) BL		X		X	X							
ZDU 2.5-2/4AN (/E)		X		X	X							
ZDU 2.5-2/4AN (/E) BL		X		X	X							
ZDU 2.5 (/E)		X		X	X							
ZDU 2.5 (/E) BL		X		X	X							
ZDU 2.5-2		X		X	X							
ZDU 4		X		X	X							
ZDU 6		X		X	X							
ZDU 10 NT		X		X	X							
ZDU 16 16/3AN		X		X	X							
ZDU 35		X		X	X							
ZDUA 2.5-2 (/E)		X		X	X							
ZDUA 2.5-2 (/E) BL		X		X	X							
ZDUB 2.5 / 2-2/4AN		X		X	X							
ZDUB 2.5 / 2AN		X		X	X							
ZDUB 2.5-2/2AN		X		X	X							
ZIA 1.5/....		X	X	X	X							
ZK3S		X		X	X							
ZKB		X		X	X							
ZKS		X		X	X							
ZPE 2.5/4AN		X	X	X	X							
ZPE 2.5		X		X	X							
ZPE 2.5/3AN		X		X	X							
ZPE 2.5/3AN/E		X		X	X							
ZPE 2.5/4AN		X		X	X							
ZPE 2.5/4AN/E		X		X	X							
ZPE 2.5/E		X		X	X							
ZPE 2.5-2 (/E)		X		X	X							
ZPE 2.5-2/3AN		X	X	X	X							
ZPE 2.5-2/3AN/E		X		X	X							
ZPE 2.5-2/4AN		X		X	X							
ZPE 35		X		X	X							
ZPEA -2/E		X		X	X							
ZRV 1.5	X	X		X	X							
ZRV 1.5PE		X		X	X							
ZSI 2.5		X		X	X							
ZSI 2.5/2		X		X	X							
ZSLD 2.5/1.5		X		X	X							
ZTR 2.5		X	X	X	X							
ZTR 2.5 D		X	X	X	X							
ZTR 2.5/3AN		X		X	X							
ZVL 1.5	X	X	X	X	X							

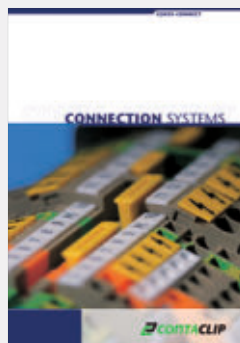


www.conta-clip.com

This document contains supplemental information describing our connection system product portfolio.

For the entire product range, please refer to our main catalogue CONTA-CONNECT, or check our web page at www.conta-clip.com.

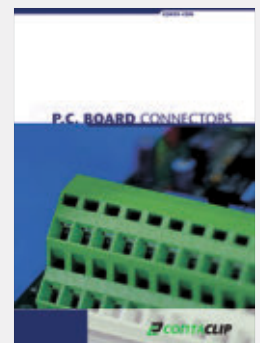
CONTA-CONNECT
[Connection Systems]



CONTA-ELECTRONICS
[Electronics]



CONTA-CON
[PCB Connectors]



D 03|16 Errors, changes and omissions excepted. All rights reserved.



Otto-Hahn-Str. 7
D-33161 Hövelhof

Fon +49 (0) 5257 9833-0
Fax +49 (0) 5257 9833-33

info@conta-clip.com
www.conta-clip.com