

Integrity
from **MARVIN**
Windows and Doors
Built to perform:

MARVIN
Windows and Doors
Built around you.®

WINDOW AND DOOR
REPLACEMENT

Ideas



Imagine The Possibilities

Whether big or small, a replacement project can be an opportunity to bring new life to your home. Use this book to explore the creative ways replacing your windows and doors can transform a room and inspire new design ideas.



Marvin windows with Lock Status Sensor bring peace of mind and design to a suburban home

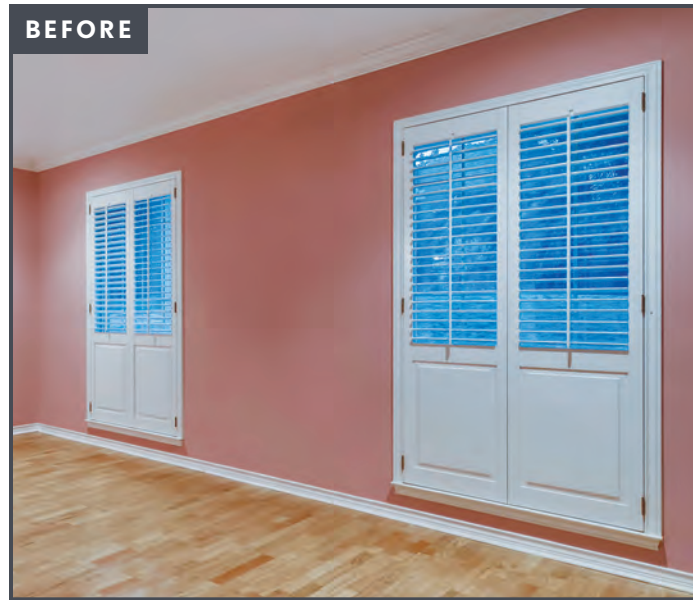
PROBLEM

When the owners of this suburban home in Austin, Texas, decided to renovate, they made their home's security a priority. However, they worried any type of window security technology would compromise design and performance—since visible components would show along the window frame.

SOLUTION

They decided to incorporate **Marvin's Lock Status Sensor** into their new windows. Since components are hidden within the window frame, there is no impact to the design—allowing the owners to achieve the style they wanted. The builders also appreciated that the windows come equipped with the necessary wiring for easy installation. The sensor integrates seamlessly with new or existing security systems through wired or wireless connections and allows for upgrades as technology evolves.

SAFETY WITH STYLE (CONT.)



DESIGN TIP
Wood window interiors provide a blank canvas so you can match window trims—and the windows—with wall colors.



MARVIN ULTIMATE DOUBLE HUNG NEXT GENERATION WINDOWS

MARVIN ULTIMATE INSWING FRENCH DOOR WITH MARVIN GALLERY HARDWARE



MARVIN ULTIMATE DOUBLE HUNG NEXT GENERATION ROUND TOP WINDOWS

Marvin Ultimate Double Hung Round Top Windows reclaim the traditional window design of this Chicago location

PROBLEM

At this Chicago building, three round top windows were blemishes on an otherwise beautiful space. The windows, which look out to a second-floor patio, were old and weathered with chipped paint. The owners wanted not only to restore the windows to their original glory—they needed the material to hold up against the city's brutal weather conditions.

SOLUTION

Replacing the windows with three **Marvin Ultimate Double Hung Round Top Windows** was the ideal solution. The aluminum clad on the exterior of the windows provided the durability and protection the owners desired, while matching the style of the original historic windows and preserving the character of the building.

TRADITIONAL REDEEMED (CONT.)



Choosing extruded aluminum exteriors for your windows provides a low-maintenance option that is less susceptible to weathering. Extruded aluminum is an extremely tough cladding that protects wood windows and provides superior durability. It can be formed to match original details and requires no repainting, so you won't have to worry about any chipped paint.





Integrity windows help a Long Island home stand up to extreme weather conditions without compromising its design

PROBLEM

The owners of this Long Island 1940s colonial home worried their windows and doors weren't durable enough to withstand the region's extreme weather conditions. Finding something that could hold up to the strong winds of the northeast coastal climate while enhancing the beauty of the home was a top priority.

SOLUTION

Made with Ultrex®, a pultruded fiberglass that outperforms and outlasts vinyl and other composites, **Integrity windows and doors** can endure all elements without showing age or wear. The versatility in design options also gave them the elevated style they desired while bringing in more natural light and warmth to interior spaces.

BEAUTY WITH STRENGTH (CONT.)

INTEGRITY WOOD-ULTREX CASEMENT AND DOUBLE HUNG WINDOWS



INTEGRITY WOOD-ULTREX INSWING FRENCH DOORS



DESIGN TIP

Choosing a white interior color for your windows helps accentuate the natural light from outside.

SMOOTH OPERATION



The windows of this colonial home were weathered and wouldn't open. Replacing the existing windows with Marvin Ultimate Double Hung Next Generation Windows allowed fresh air to flow back into the home. Additionally, the homeowners were able to match the hardware they loved on their previous windows, so their new windows provided renewed style and performance.

MARVIN ULTIMATE DOUBLE HUNG NEXT GENERATION WINDOWS

INTEGRITY WOOD-ULTREX CASEMENT AND AWNING AND MARVIN ULTIMATE DOUBLE HUNG NEXT GENERATION WINDOWS



Integrity Wood-Ultrex Awnings make a bold statement while preserving energy in a Rhode Island home

PROBLEM

The owners of this 1920s 1,000-square-foot cottage knew they'd need to do extensive renovations, including reworking the floor plan and enlarging the house to accommodate their family. At the same time, they wanted to keep the house recognizable as a Jamestown shingled cottage.

Since one of the family members is an architect that designs sustainable-community projects, energy efficiency was paramount. They set a goal of making the house a Net Zero home—a building standard that dictates that a house use only as much energy as it can produce.

SOLUTION

To ensure the house would use as little energy as possible, the family chose triple-glazed argon-filled windows that provide the energy efficiency they wanted. With their Ebony exteriors, the **Integrity Wood-Ultrex Casement and Awning Windows** not only work hard at preserving energy, they also make a beautiful style statement that aligns with Jamestown's distinctive look.

To preserve energy throughout the home, builders lined the existing foundation and slab with a combination of rigid mineral-wood panels and rigid foam panels. Photovoltaic solar panels and a heat-recovery HVAC system will supply the needed energy, while layers of insulation, ENERGY STAR® appliances, and LED lighting keep energy use low.

PHOTO: ANTHONY TIEULI

ENERGY-EFFICIENT COTTAGE RENOVATION (CONT.)

DESIGN TIP

Make a unique style statement that matches your design needs—both indoors and out. These windows pair Ebony exteriors and black sashes with white interiors.



INTEGRITY WOOD-ULTREX CASEMENT WINDOWS

INTEGRITY WOOD-ULTREX CASEMENT AND MARVIN ULTIMATE DOUBLE HUNG NEXT GENERATION WINDOWS

MARVIN ULTIMATE DOUBLE HUNG NEXT GENERATION WINDOWS



Marvin Ultimate Double Hung Next Generation Windows bring new life to an old home

PROBLEM

When buying an older home, owners often have to make a few upgrades. This Chicago home needed all windows replaced due to deterioration.

SOLUTION

Marvin Ultimate Double Hung Next Generation Windows with divided lites helped bring the home back to life. Their White and Designer Black painted interior finish, and Ebony aluminum-clad exterior provided a much-needed style upgrade that stayed true to the style of the home while bringing it into a new era.

DESIGN TIP

Choosing different interior colors for windows in different rooms gives each its own unique style.

RENEWED AESTHETICS (CONT.)



DESIGN TIP
Mixing and matching the finish colors on your window interiors can add layers of style and personalization to your spaces. These homeowners used windows to elevate the style of their home by mixing black window sashes with white jamb extensions and trim.

DESIGN TIP

A window replacement project can be an opportunity to reimagine a space. Updating the style of the original windows can bring fresh character to the design of your home.





Double Hung Windows stay true to their original character with Marvin Tilt Pac® Double Hung Sash Replacement System

PROBLEM

After inheriting her childhood home, the owner of this 1879 Italianate foursquare house in Newton, Massachusetts, was set to move back in with her own family—but not before renovating and expanding its 1,700 square feet. To her, upgrading the home while keeping its original character was key. But the home's rope and pulley double hung windows had water damage and showed signs of termites, presenting a major replacement challenge.

SOLUTION

To ensure a replacement didn't strip the windows of their original features, the owner chose the **Marvin Tilt Pac Double Hung Sash Replacement System**. This system is an easy and cost-effective way to update old, drafty windows and replace damaged sashes, allowing for a simple update while keeping many sentimental features of the old home.



HARMONIOUS REPLACEMENT (CONT.)



DESIGN TIP

Dark sashes paired with contrasting white trim add visual interest.



DESIGN TIP

Divided lites help bring character to your windows and doors. Whether you use one of our patterns or dream up your own, the design possibilities are endless.



MARVIN ULTIMATE SLIDING FRENCH DOOR

The Marvin Ultimate Sliding French Door provides homeowners with a seamless transition between indoors and outdoors

PROBLEM

For the owners of this Minnesota home, their patio door window coverings were a visual distraction that kept them from enjoying the expansive views of their backyard. The three separate protruding roller shades flailed when the door was opened or closed, and their cords flopped around in the breeze. The door itself was noisy, which interrupted activities in the dining area—making it a considerable annoyance to the homeowners. And an unappealing transom window on top gave the door an undesirable look.

SOLUTION

Replacing the door with a **Marvin Ultimate Sliding French Door with integrated shades** created a more attractive and effortless entryway. The traditional design of the door brought a renewed elegance to the home. Its improved quality provided smoother operation, allowing for greater ease when flowing from inside to outside of the home. The integrated, matching shades—with their precise fit and no visible cords or pulleys—added beauty and flawless functionality. Additionally, the new door is taller and the awkward transom window has been removed.

DESIGN TIP

Incorporating sleek hardware helps bring a fresh and stylish design to your traditional window and door.

A TRANQUIL SOLUTION (CONT.)



With their precise fit and absence of cords, integrated shades provide seamless control of light flow and are included in Marvin's warranty.



Need more design ideas?
Check out our Instagram or visit
our Pinterest inspiration boards.

INSTAGRAM

@marvinwindows

PINTEREST

pinterest.com/marvinwindows

Learn more about when it's time
to replace and what decisions to
consider in our Replacement Guide.

When you're ready to get started,
our Replacement Workbook
will lead you through our products
and options to help you make
the best possible design choices
for your home.

DOWNLOAD THE GUIDE AND WORKBOOK TO LEARN MORE
ABOUT REPLACING YOUR WINDOWS:

marvin.com/replacement

At Marvin, our focus is on creating long-lasting, energy-efficient windows and doors that are just right for your unique home.

We understand and appreciate the investment you are making, and we work hard to ensure that replacing your windows and doors with us is a rewarding experience.

Thank you for considering Marvin for your project.
We look forward to working together.

MARVIN.COM/REPLACEMENT



Built to perform:



Built around you.®