

MARY SHELLEY
AND
FRANKENSTEIN

I. Her Life

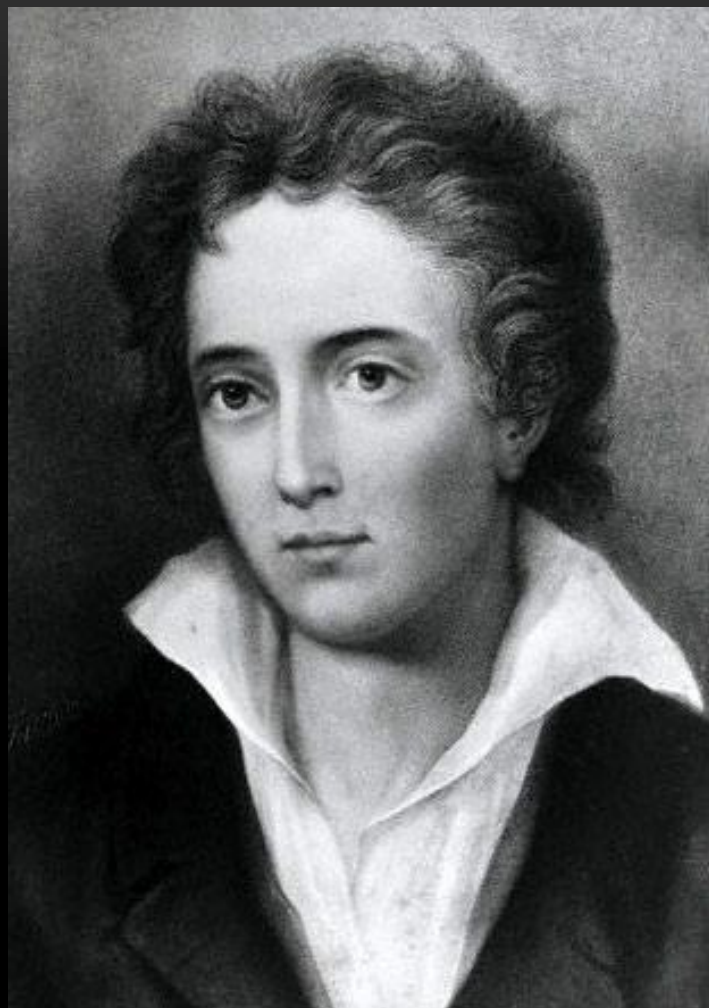
A. Mary

Wollstonecraft



B. William
Godwin





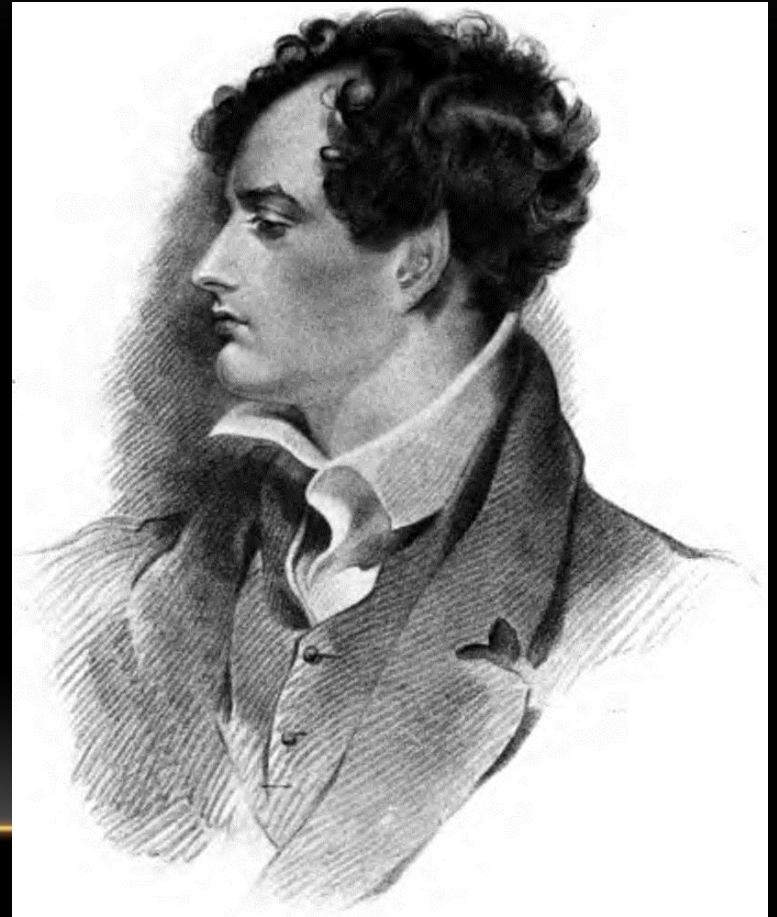
C. Percy
Shelley

II. Her Inspirations and Influences

A. Percy Shelley

B. Lord

Byron



c. DR. ERASMUS DARWIN,
BLUNDELL, GALVANI AND SCIENCE

- Boundary between life and death,
 - probed it through experiments with lower organisms, human anatomical studies, attempts to resuscitate drowning victims, and experiments using electricity to restore life to the recently dead.

D. SCOTLAND



E. GHOST STORIES

F. HER IMAGINATION AND DREAMS



When I placed my head upon my pillow, I did not sleep, nor could I be said to think. . . . I saw--with shut eyes, but acute mental vision--I saw the pale student of unhallowed arts kneeling beside the thing he had put together. I saw the hideous phantasm of a man stretched out, and then, on the working of some powerful engine, show signs of life, and stir with an uneasy, half-vital motion. Frightful must it be; for supremely frightful would be the effect of any human endeavor to mock the stupendous Creator of the world.

- Mary Shelley, from her introduction to the third edition of *Frankenstein*

IV. Her Motifs

A. Gothic

1. Supernatural hours/ desolate environment
 2. Atmosphere of unknown
terror
 3. Emotions: anger, surprise,
terror
 4. Words: fear, mystery,
suspense, apparition,
ghost, haunted, fright, etc.
-

B. ROMANTIC ELEMENTS

1. EMOTIONAL CONCERNS

A. THE HEART (SOUL MATE)

B. NATURE AS SOOTHING

C. SOCIETY

D. INDEPENDENCE

E. SELF-RELIANCE

2. “DO SOMETHING”

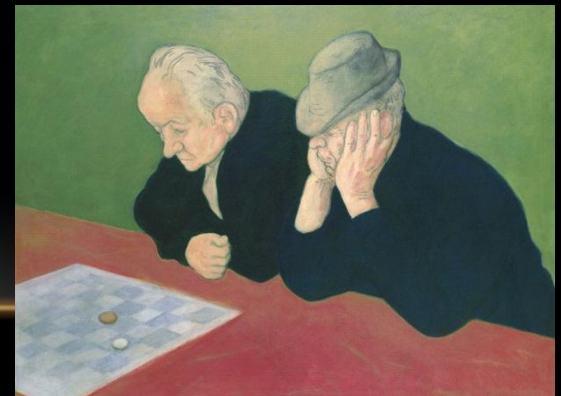
3. “SPEAK UP FOR YOURSELF

STYLE: A GOTHIC/ROMANTIC NOVEL

- Gloomy desolate settings
 - Atmosphere of mystery and terror
 - Appreciation of nature and landscapes
 - Drive and ambition fuel Romantic characters
-

PSYCHOLOGICAL REALISM: ISN'T MERELY A GOTHIC NOVEL

- Shelley adds to the development of the plot using psychological realism.
- She delves into the psyches of the characters in an attempt to explain WHY they react as they do: what drives them to make their decisions?



EPISTOLARY

- A novel in which the story is carried forward by letters written by one or more characters.
- Author can present character's reactions clearly
- Author can present multiple points of view



LITERARY ELEMENTS: IRONY / ANTITHESIS / ALLUSION / THEMES / SYMBOLS

Two major ironies in the novel

- The Creature is more sympathetic than Frankenstein
 - more imaginative
 - more responsive to fellow creatures.
- He has many pleasing qualities but is not physically attractive (which makes him an outcast).

ANTITHESIS

- Antithesis-Contrast of ideas expressed within a statement or sentence. Indicates a contrast of character, ideas, themes, settings, or moods.
 - Frankenstein vs. His creation
 - Life vs. Death
 - Passion vs. Reason
 - Natural vs. Unnatural
 - Known vs. Unknown
 - Civilized vs. Savage
 - Masculine vs. Feminine
 - Beautiful vs. Ugly
 - Good vs. Evil
 - Light vs. Dark
 - Heat vs. Cold

ALLUSIONS

- Allusion: Reference to another work of art.
- *Rime of the Ancient Mariner*- Coleridge's poem
- *Paradise Lost* —Milton (Frankenstein can be compared with Adam, Satan, and Eve.)



THEMES

- Themes: Recurring ideas throughout the novel.
 - The story's subtitle *The Modern Prometheus* suggests its principal theme

-Prometheus' Story--clip

THEMES CONT'D

- the consequences of irresponsibility in the pursuit of knowledge.
- Warns of the pride that can accompany the acquisition of knowledge.
- the consequences of society's rejection of someone who is unattractive.
- the destructive power of revenge
- the conflict between a parent and child
- sympathy



SYMBOLS: OBJECTS/IDEAS MADE TO REPRESENT SOMETHING IN LITERATURE

- The color white or a brilliant light.
 - symbolizes knowledge, pain, loneliness, and death.
- The Alps (Mont Blanc)
 - the sublime, the majestic aspect of nature that inspires awe and terror.
- Water: Knowledge, communication, tranquility, and immortal life. Becomes a symbol for danger when it becomes ice.
- Lightning
 - Great illusive power. Electricity replaces Promethean fire as a gift with both beneficial and destructive consequences.
- Fire
 - revenge, fear and terror

FOIL

- Foil: A useful and interesting contrast between two characters within a literary work.
 1. Frankenstein vs. The Creature
 2. Walton vs. Frankenstein
 3. Henry vs. Frankenstein

