

Master List of Architects that worked in York Harbor, ME between 1885 and 1930

This is the master list of individual architects, architectural firms and landscape architects that practiced in York, York Harbor, York Cliffs and Cape Neddick, Maine between 1885 and 1930. Many of the architects were brought to York Harbor by their affluent clients for specific commissions. Two local architects, EB Blaisdell and FC Watson dominated the design of the York Harbor Colony with 45-50 designs (cottages, hotels, clubs, schools, bridges and churches) to their credit. The peak building boom in York Harbor was 1899-1901.

Three prestigious architectural firms are missing from the York Harbor list that practiced in Bar Harbor and Newport, RI at the time: McKim, Mead & White, Peabody & Stearns, and Rotch & Tilden. However, a number of architects on this list started and were trained at one of these three firms. Many of the architects received academic training at the Massachusetts Institute of Technology (MIT), and a few additional academic training at the École des Beaux-Arts in Paris.

Architect	YH Cottages & Buildings	Other Information and Noted Works
Andrews, Jaques and Rantoul	'Villa Tranquille' for John Ropes of Ropes & Gray	American architectural firm founded in Boston, in 1885 by Robert Day Andrews, Herbert Jaques and Augustus Day Rantoul. The firm designed numerous buildings that are listed on the US National Register of Historic Places. The Hartford Club, 1901, Hartford, CT, The Equitable Building, 1892, Denver, CO, Gov. Frank West Rollins House, Concord, NH, 1890 and The Hooper Mansion, 1889, Boston, MA
Edward B. Blaisdell (1845-1924)	Designed and built many of the large shingle style cottages in York, with a wide range of work including hotels, clubs, private cottages, churches, bridges, and banks.	His commissions for cottages included: Stonecroft, 1895, The Brambles, 1899, Tyn-Y-Coed, 1899, Millbury Cottage, 1899, Hubbard Brown Cottage, Youngholm, 1900, Twin Cottage and Mayfair Cottage, 1901, and Stetson House, 1901. Hotels and clubs included the Albracca Hotel, 1891, the Passaconaway Inn, 1892, and the York Country Clubhouse, 1901. FC Watson (see below) worked with EB Blaisdell between 1899-1901.
Roger H. Bullard (1884-1935)	'Bullard Cottage', 1923, former stables of Rock Ledge Cottage	Columbia University School of Architecture in 1907 and practiced in Long Island. Architect for the Auxiliar Obras Publicas of the Cuban government, 1908-1909. His works include: The Maidstone Club of East Hampton, 1927, Plainfield, New Jersey Country Club, Oakland Golf Club, 1926, Bayside, Milwaukee Country Club.
Chapman & Frazer	'Harbor Lights', cottage for NH Gov. Frank W. Rollins, 1906	Chapman and Frazer was formed in 1891, a partnership of John Henry Chapman and Horace Southworth Frazer. 'Rock Ledge' George Herbert Walker, (Bush's grandfather), 1904, Clement S. Houghton House, Chestnut Hill, 1904, 240 Commonwealth, 1904, The Castle for William Lindsey (on Boston University campus), 1904, Andrew Weeks Cottage, Marion, MA, 1895, W R Cordingly House, Chestnut Hill, MA, 1895
Cram and Wentworth (Ralph Adams Cram, 1863-1942)	'The Ledges', 1889, the Sarah Whitemore Cottage	Philips Church, Exeter, New Hampshire, 1897, Emmanuel Church, Newport, Rhode Island, 1900, Saint Thomas Church, New York City, 1905-1913, First Unitarian Society in Newton, MA, 1906, Cathedral Church of St. Paul, Detroit, Michigan, 1908, Park Avenue Christian Church, NYC, 1911, Multiple buildings at Princeton University, Princeton, NJ, including the 1917 Cleveland Tower, the 1928 Princeton University Chapel, Campbell Hall, McCormick Hall, and multiple buildings of the Graduate College, 1913-1927, St. James' Episcopal Church, NYC, rebuilt, 1924, J.W. McCormack Post Office and Courthouse, Boston, MA, 1933
William Dabney, Jr. (1855-1897)	'Redcote' on the York River. Peter's Cottage, Starboard Lane, 1882, the Union Chapel & Library, 1887, Overbank Cottage, 1892, Stackpole Block, 1895, The Moorings, 1889	Was at the forefront of the Boston Colonial Revival. Sorrento Library, Sorrento, ME, 1893, 21-room Colonial Revival-style mansion Jamaica Plain, C. Sydney Waldo, 1896, Seacroft, for Nancy King (Dabney) Bishop, Narragansett, RI, 1886, David Nevins Cottage, Nantucket, MA, 1894
Antoine Dorticos (1848-1906)	'Cragmere', cottage of George M. Conarroe of	During the 1880s and 1890s, Antoine Dorticos designed a series of fine Queen Anne and Shingle Style cottages and pioneered the Casco Bay islands as a

	Philadelphia at York Cliffs, 1895	fashionable summer retreat for local families. He is known for other homes along the Maine coast, including cottages on Peaks Island, Great Diamond Island, and Chebeague Island. In total he did 21 projects in Maine and later, others in Arizona
William Ralph Emerson (1833 – 1917)	Rock Ledge and Aldis Cottages, 1892, Juniper Hill, Four cottages for Willson L. Walker, Cove Cottage, Walker Cottage, Stage Neck Cottage and Short Sands Cottage. 1897	Considered the 'father of the shingle style'. Mossley Hall, William B. Howard Cottage, Bar Harbor, 1883, Highbrook, Mary Leeds Cottage, Bar Harbor, 1881, St. Peter's Episcopal Church, Rockland, ME, 1884, Fair Haven, Samuel H. Jones Cottage, Kennebunkport, ME, 1888, Blue Hill Inn, Blue Hill, ME, 1892, Felsted, cottage for Frederick Law Olmsted, Deer Isle, ME, 1896, Redwood, C. J. Morrill House, Bar Harbor, ME, 1879, 1881 Boston Art Club, Boston, MA, 1881, Saint Jude's Episcopal Church, Seal Harbor, ME, 1887, The Reading Room, Bar Harbor, ME, 1890, The Hotel Claremont, Claremont, NH, 1892
Frank Furness (1839-1912)	"The Pines", 1885. Used by Mark Twain.	Known for his eclectic, muscular, and often idiosyncratically scaled buildings. "Stanwood," Bar Harbor, ME, 1885, University of Pennsylvania Library, Philadelphia, 1891, Rhawn-Green "Knowlton Mansion", Philadelphia, PA, 1883, Pennsylvania Academy of Fine Arts, Philadelphia (1871-76), Undine Barge Club, #13 Boathouse Row, Philadelphia, 1882-83, Broad Street Station, was the world's largest passenger railroad terminal, Philadelphia, PA 1893, Baltimore & Ohio Railroad Station (24th Street Station), 1886-88, Church of Our Father, Hull's Cove, Mount Desert Island, ME, 1891.
Henry J Hardenbergh (1847 - 1918)	Trinity Episcopal Church in York Harbor, 1908	The Plaza Hotel – Manhattan, NY, 1905–07, Waldorf Hotel – Manhattan, NY, 1893, demolished 1929, Astoria Hotel – Manhattan, NY, 1897, demolished 1929, and the Copley Plaza Hotel – Boston, MA, 1912
Holabird & Roche	'Aldis Cottage', 1911, alterations	Beginning with the Tacoma Building, their first major commission, the firm became well known for its groundbreaking Chicago School skyscrapers. An enormously successful practice, they also designed large, ornate hotels across the country. Graceland Cemetery Chapel, 1888, University Club of Chicago, 1908, Soldier Field, 1924, Palmer House Hotel, 1925, Chicago Daily News Building, Chicago, 1929, Palmolive Building, Chicago, 1929 Chicago Board of Trade Building, Chicago, 1930,
Guy Lowell (1870-1927)	Isabella Breckinridge House also known as 'River House', 1905 and rebuilt after fire in 1927. Built for Mary Goodrich, widow of tire magnate B. F. Goodrich.	Lowell was the son of Mary Walcott (Goodrich) and Edward Jackson Lowell, and a member of Boston's well-known Lowell family. Lowell Lecture Hall, Harvard University, Cambridge, MA, 1902, Boston Museum of Fine Arts, Boston, 1909, NY State Supreme Courthouse, NYC, 1913, Grosse Pointe Yacht Club, Grosse Pointe Shores, MI, 1929, Harvard University President's House, Cambridge, MA, 1912
Timothy G. O'Connell (1868-1955)	Star of the Sea Catholic Church, York Beach, 1901	O'Connell is reputed to have produced some 600 civic and religious buildings. Some of these structures such as the Church of Sts. Peter and Paul in Lewiston, Maine would rival any medieval cathedral in form and scale. Works include: St. Mary's By The Sea Catholic Church, Biddeford Pool, ME, 1915, St. Mary of the Harbor Church, Boothbay Harbor, ME, 1917
Olmsted Brothers, Landscape Architects	'Millbury Meadows', cottage for Harold C. Richard, Esq., 1929	The Olmsted Brothers company was an influential landscape design firm in the United States, formed in 1898 by stepbrothers John Charles Olmsted (1852–1920) and Frederick Law Olmsted, Jr. (1870–1957), who were the sons of the eminent landscape architect Frederick Law Olmsted. Frederick Law Olmsted (1822–1903) was considered to be the father of American landscape architecture. Works include: Eastern Promenade, Portland, ME, Seattle Park System, Prouty Garden, Boston Children's Hospital, Boston, Franklin Delano Roosevelt Park, Philadelphia, PA
John Russell Pope (1874 – 1937)	'Millbury Meadows' cottage, for Harold C. Richard, Esq., 1929	National Archives and Records Administration building, 1935, Jefferson Memorial, 1943, West Building of the National Gallery of Art, 1941, Washington, DC. Throughout his career, Pope designed private houses such as Vanderbilt houses, his personal residence at Newport, RI, and other public buildings besides the Jefferson Memorial and the National Gallery, such as the massive Masonic House of the Temple, 1915, Washington DC, and the triumphal-arch Theodore Roosevelt Memorial, at the American Museum of Natural History in NYC, 1936. He also designed the extension of the Henry Clay Frick mansion in NYC that created the Garden Court and music room.

James Purdon (1873 - ?)	York Harbor Reading Room, 1910	Church of the Disciples , Boston, MA, 1907, Bourne Town Hall, 1914, The Owl Club, Harvard University, 1905, The Delphic Club, 1902, Harvard University, House of Henry R. Smith, Esq. , Leominster, MA, 1910, House of Mrs. P.H. Lombard , Chestnut Hill, Brookline, MA, 1912, House of Charles F. Leland, ESQ., Southborough, MA, 1911
Donald Ross (1872-1948)	Golf Course design for the York Country Club, 1923	A legacy of 399 golf courses that he either designed or redesigned. During his heyday in the 1920s, he was the country's most prolific creator of golf courses. From 1919 through 1931, eight of the thirteen US Opens were contested on layouts he had designed or redone.
Shepley, Rutan and Coolidge	Fergus Reid's Cottage, 1914	Architecture firm based in Boston, MA, operating between 1886 and 1915, with extensive commissions in monumental civic and collegiate architecture in the spirit and style of HH Richardson. Projects include 23 stations for the Boston & Albany Railroad, 1886-1894, Main Quad and several other Mission Revival buildings for Stanford University, 1886 – 1906, Chicago Public Library, 1892, North Union Station, Boston, 1893, Art Institute of Chicago, 1893, South Station, Boston, 1898, Hildene, the Robert Todd Lincoln mansion, Manchester, VT, 1905, Langdell Hall, Harvard Law School, 1907.
H. M. Stephenson	St. George's Episcopal Church, 1886, (Woodbridge Road)	Turks Head Inn, Rockport, MA, Residence of Arthur Wallace Pope, Esq, Wellesley, MA, 1896, St. John's Episcopal Church (Keokuk, Iowa), 1891, The German Reformed Church, Jamaica Plains, MA, 1904, 326 Beacon Street, Boston for George Ballantine, 1890
Ellen Biddle Shipman, Landscape Architect (1869-1950)	Gardens on Starboard Lane for Marion Alger, wife of Russell A. Alger, Jr.,	Hailed as one of America's greatest "flower-garden makers," belonged to a generation of women landscape architects who were pioneers in a field that had been dominated by men up to the turn of the century. Shipman's gardens often appeared in magazines, including House Beautiful. In 1933, House & Garden named her the "Dean of Women Landscape Architects". She lectured widely, and completed over 400 projects. Shipman designed The Moonlight Garden at the Edison and Ford Winter Estates in Fort Myers, FL for Thomas Edison's wife Mina.
OC Simonds, Landscape Architect (1855 – 1931)	Gardens for Aldis and Rock Ledge Cottages, pathways for First Parish Church of York, pathways across York	Cummer Gardens, Jacksonville, FL Simonds, Lake Forest Cemetery, Library Park, Lenosha, WI, Lincoln Park, W. Chicago, IL, Riverview Park, Hannibal, MO, Tenney Park-Yahara River Parkway, Madison, WI, Washington Park, Springfield, IL, Hill House, Mill Neck, NY.
John Calvin Stevens (1855-1940)	Marshall House, 1916, Emerson Hotel and Cottage additions, York Information Bureau, 1929	Major innovator in the Shingle Style, and the Colonial Revival style. He designed more than 1,000 buildings in Maine. Winslow Homer house and studio, Prouts Neck, ME, 1884, Brown-Donahue house, Delano Park, Cape Elizabeth, ME, 1886, Governor John Freemont Hill house, Augusta, ME, 1902, "Elmhurst," John S. Hyde house, Bath, ME, 1914, Camden Yacht Club, Camden, ME, 1912
Joseph H Taft (? – 1911)	'Greystone' cottage for John D. Vermeule, Cape Neddick, ME	Five unit structure on Manhattan Avenue between West 112 and West 113 Streets, 1889, Albrow House, Cedarhurst, NY, 1900, Built in 1890, 560 West End, one of twenty luxury houses being built on the west side of West End Avenue, Charles B. Alexander Cottage, Tuxedo Park, NY, 1887, 330 to 346 West 84th Street, 1889
Frank Manton Wakefield (1863-1913)	Original stables for Rock Ledge Cottage, 1896	MIT School of Architecture and worked under the architectural firm of McKim, Meade & White in New York. He left to start his own firm in Boston and was successful in designing private house in Bar Harbor, Boston, and Schenectady, NY.
Fred Watson	'Mill Dam Cottage', 1904 'Emerson Cottage' (Long Sands), Dr. McCollum Cottage, 1904, York High School, 1902, Hawks Pharmacy, York Beach, 1901	Worked with EB Blaisdell in York Harbor from 1899-1901 and then started his own practice in York. First Baptist Church at Leffert's Park , Brooklyn, NY, 1899.
Edmund M. Wheelwright (1854-1912)	'The Haven'	Served as city architect for Boston, MA, 1891–1895. Projects include Boston Public Library, 1888, (while working for the firm of McKim, Mead, and White), Harvard Lampoon Building, 1909, Boston Opera House (1909), Larz Anderson Auto Museum, 1888, Longfellow Bridge, 1906, New England Conservatory's

	Jordan Hall, 1903, The 156-foot tower built for Boston Central Fire Station in the South End, 1892, modeled after the 14th-century Torre del Mangia in Siena.
--	---

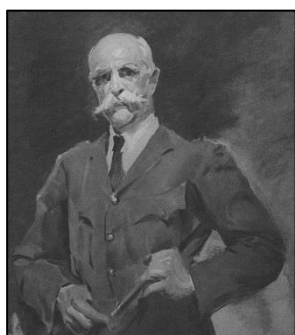
Worked In York Harbor – 1885 to 1905	Worked in YH – 1906 to 1930
Andrews, Jaques and Rantoul Edward B. Blaisdell (1845-1924) Chapman & Frazer Cram and Wentworth (Ralph Cram, 1863–1942) William Dabney, Jr. (1855-1897) Antoine Dorticos (1848-1906) William Ralph Emerson (1833–1917) Frank Furness Guy Lowell (1870-1927) Timothy G. O'Connell (1868-1955) H. M. Stephenson O.C. Simonds, Landscape Architect (1855–1931) Joseph H Taft (? – 1911) Frank Manton Wakefield (1863-1913) Fred C Watson Edmund M. Wheelwright (1854-1912)	Edward B. Blaisdell (1845-1924) Roger Bullard (1884-1935) Henry Janeway Hardenbergh (1847 - 1918) Holabird & Roche Guy Lowell (1870-1927) Olmsted Brothers, Landscape Architects John Russell Pope (1874 – 1937) James Purdon (1873 - ?) Donald Ross (1872-1948) Shepley, Rutan and Coolidge Ellen Biddle Shipman, Landscape Architect (1869-1950) O.C. Simonds, Landscape Architect (1855 – 1931) John Calvin Stevens (1855-1940)

Architect or Architectural Firm	Best Known For:
Cram and Wentworth (Ralph Cram) Henry J Hardenbergh Holabird & Roche John Russell Pope Roger Bullard Edmund M. Wheelwright Shepley, Rutan and Coolidge	Large scale churches and cathedrals Large hotels in NYC and Boston Chicago skyscrapers Monuments in Washington, DC Country Clubs in Long Island Chief Architect for City of Boston Railroad Stations in the style of HH Richardson

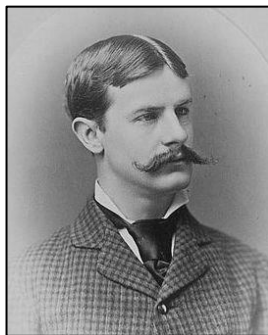
Gallery of Architects that worked in York Harbor, ME from 1885-1930



John Russell Pope



Charles Burns



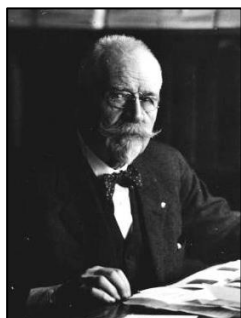
Edmund M. Wheelwright



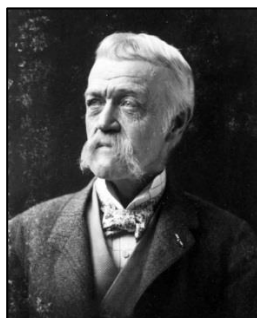
Antoine Dorticos



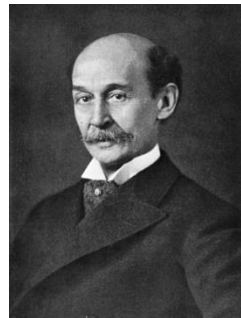
William Ralph Emerson



John Calvin Stevens



Frank Furness



Henry Hardenberg



Ralph A Cram



Frederick Law Olmsted, Jr.



John Charles Olmsted



OC Simonds



Ellen Shipman



Guy Lowell



Timothy G O'Connell



Donald Ross