



# KimberBear™

When words are not enough this adorable bear can provide comfort for a little one in need. Designed for charitable giving, the Kimberbear is sweetly sized for tiny hands and can be packed in comfort kits prepared for children in foster care, entering emergency shelters, or receiving treatment at children's hospitals. Stitched in soft Cuddle from Shannon Fabrics, an embroidered heart on the chest shows the Kimberbear only has love to give.

For additional copies of the Kimberbear sewing instructions and pattern templates please visit [kimberbell.com/kimberbear](http://kimberbell.com/kimberbear).

### Materials Needed:

Finished Size: Approximately 12 x 14"

#### FABRIC:

Fabric 1: Bear ¼ Yard of 58-60" wide fabric  
 Fabric 2: Nose Fabric Scrap  
 Fabric 3: Heart Fabric Scrap

#### KIMBERBELL® PRODUCTS:

- KDTL100 Paper Tape

#### RECOMMENDED CLOVER TOOLS:

- Wonder Clips®
- Point 2 Point Turner
- Clip 'n Glide Bodkin
- Fabric Marking Pen

#### OTHER:

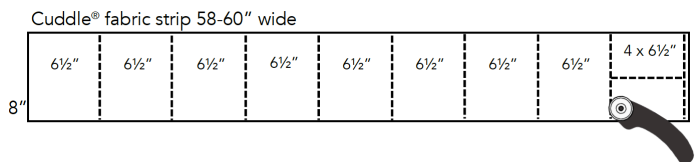
- 90/14 Stretch Needle for sewing machine
- Embroidery floss (dark brown or black)
- Water-soluble topping
- Fabric glue stick
- Poly-fil®

### Cutting Instructions:

#### Fabric 1:

Arms	cut (2) 6½ x 8"
Legs	cut (2) 6½ x 8"
Body	cut (2) 6½ x 8"
Head	cut (2) 6½ x 8"
Muzzle	cut (1) 4 x 6½"

- Trim ¼ yard Cuddle® to 8" x Width of Fabric strip
- Sub-cut strip into (8) 6½" pieces and (1) 4 x 6½" piece



#### Fabric 2:

Nose cut (1) 4 x 4"

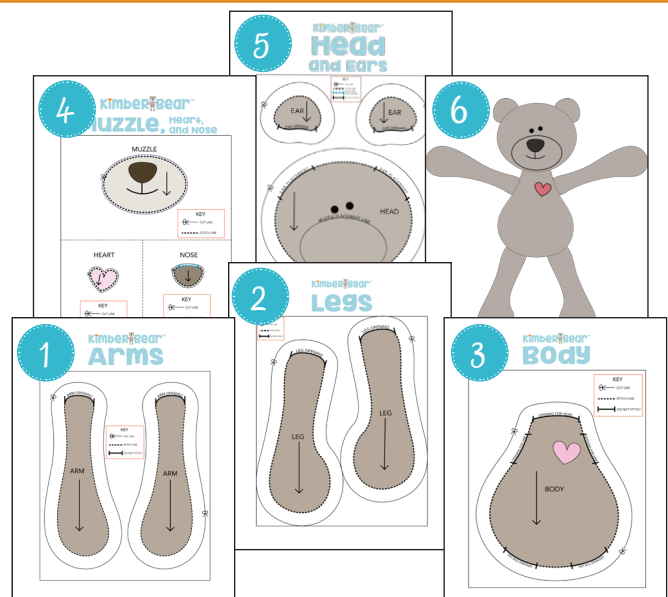
#### Fabric 3:

Heart cut (1) 4 x 4"

The Kimberbear is completed in (6) parts. Our method for stitching the Kimberbear, makes working with Cuddle® and Luxe Cuddle® easy.

- To begin, copy pages 11-15 of this Kimberbear pattern on lightweight paper. You will be stitching the bear parts directly on the paper template, so copy a set for each bear you are making.
- Trim the copied pages to the 6½ x 8" box outline, to match fabric cuts. Do not cut out individual pattern pieces. Save the title blocks to label completed bear parts like arms and legs.
- Before sewing, shorten the stitch length on your machine for a tight stitch. The needle will perforate the paper as you sew and the short stitches will keep your sewing in place when tearing the paper away.

**Fabric Note:** The Kimberbear was designed to be made with Cuddle® and Luxe Cuddle® by Shannon Fabrics. Plush fabrics like Cuddle® have a directional design or nap. This means the fabric will lay smooth when brushing your hand in the direction of the nap, compared to standing up when brushing your hand against the fabric nap. Each pattern template has an arrow showing which direction the nap of the fabric should lay, so the bear will feel smooth from head to toe.

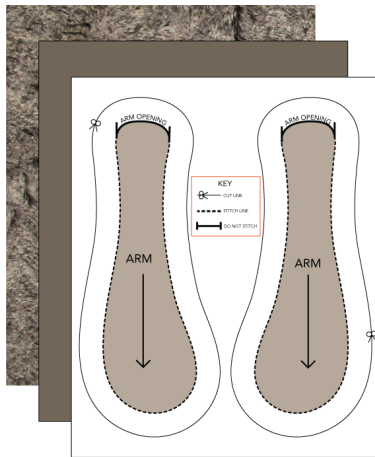


# Part 1: Arms

## 1. Sewing Instructions:

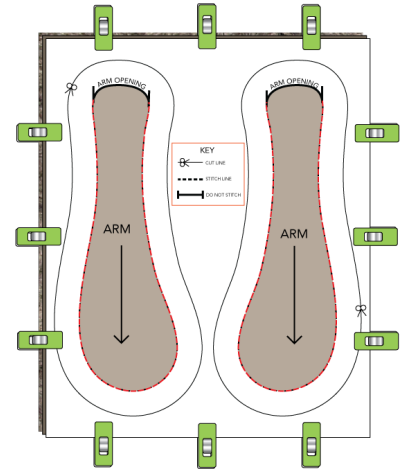
- Place **(2)** pieces of Cuddle® fabric **RST** (right sides together)
- Align copied pattern on top of the Cuddle® fabric

**Note:** Lay Cuddle® with nap following the direction of the arrow, so the bear will feel smooth from head to toe.



## 2.

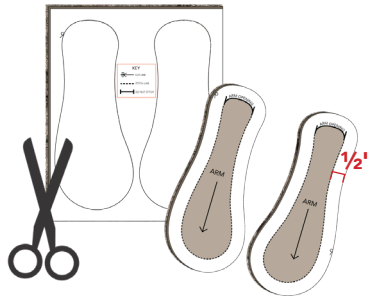
- Use Wonder Clips® to hold the paper to the cuddle
- Following the Stitch Line, stitch directly on the paper, using a backstitch at the beginning and end of each arm outline



## 3.

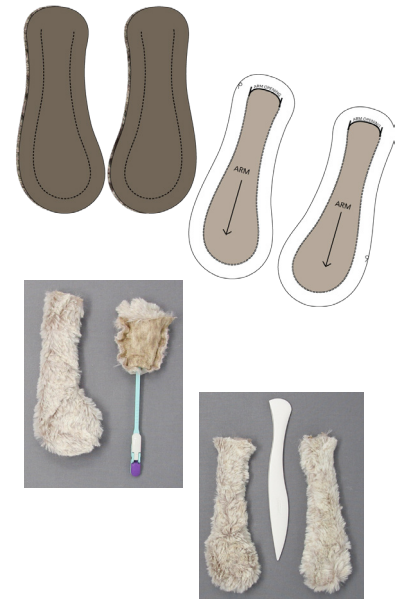
- Following the Cut Line, trim around the arms 1/2" from the Stitch Line

**Note:** Cuddle® is a knit fabric which has a natural stretch so it won't be necessary to clip curves before turning inside out. If using cotton fabrics, you will need to clip the curves.



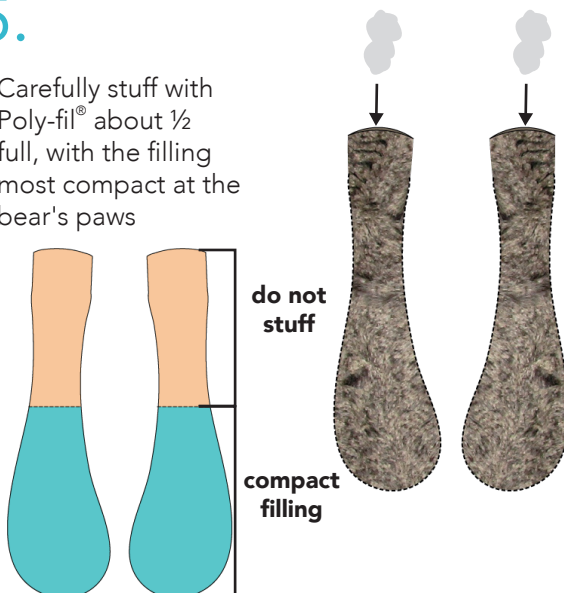
## 4.

- Gently pull paper pattern away from fabric
- Turn arms **right side out** with the *Clip 'n Glide Bodkin*
- Gently press the scallop top of the *Point 2 Point Turner* against the curved seams of the bear to smooth



## 5.

- Carefully stuff with Poly-fil® about 1/2 full, with the filling most compact at the bear's paws



## 6.

- Attach the Kimberbear part label to the top of arms and set aside for assembly

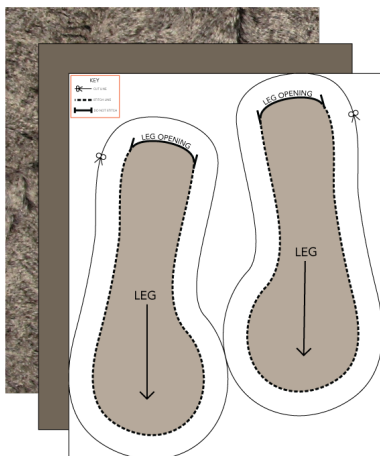


## Part 2: Legs

### 1. Sewing Instructions:

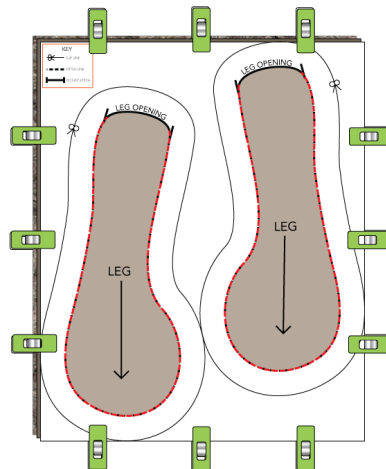
- Place **(2)** pieces of Cuddle® fabric **RST**
- Align copied pattern for **Part 2: Legs** on top of the Cuddle® fabric

**Note:** Lay Cuddle® with nap following the direction of the arrow, so the bear will feel smooth from head to toe.



### 2.

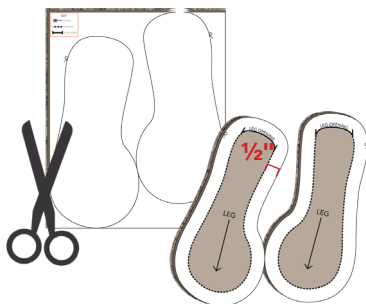
- Use Wonder Clips® to hold the paper to the cuddle
- Following the Stitch Line, stitch directly on the paper, using a backstitch at the beginning and end of each leg outline



### 3.

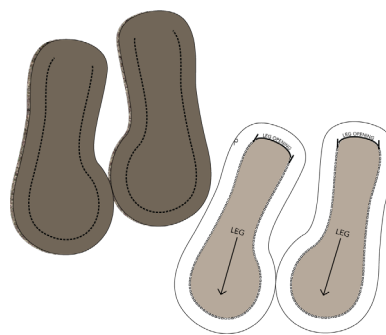
- Following the Cut Line, trim around the legs 1/2" from the Stitch Line

**Note:** Cuddle® is a knit fabric which has a natural stretch so it won't be necessary to clip curves before turning inside out. If using cotton fabrics, you will need to clip the curves.



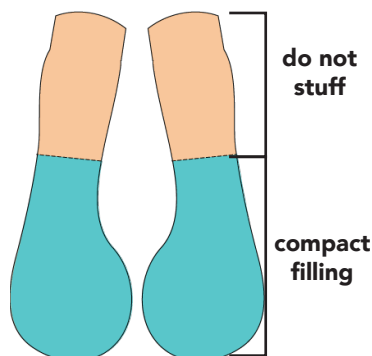
### 4.

- Gently pull paper pattern away from fabric
- Turn legs **right side out** with the *Clip 'n Glide Bodkin*
- Gently press the scallop top of the *Point 2 Point Turner* against the curved seams of the bear to smooth



### 5.

- Carefully stuff with Poly-fil® about 1/2 full, with the filling most compact at the bear's paws



### 6.

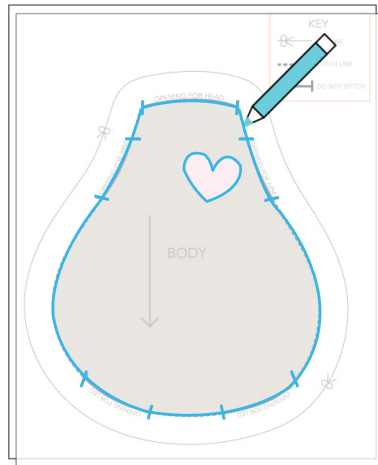
- Attach the Kimberbear part label to the top of legs and set aside for assembly



## Part 3: Body

### 1. Sewing Instructions:

- Lay a piece of water-soluble topping over the **Part 3: Body** pattern
- Trace the body outline and heart with a fabric marking pen (Shown in **blue**.)



### 2.

- Place **(1)** piece Cuddle® fabric **right side up**
- Lay the topping over the fabric (This will keep the pile of Cuddle® from getting caught in the needle or under the presser foot.)

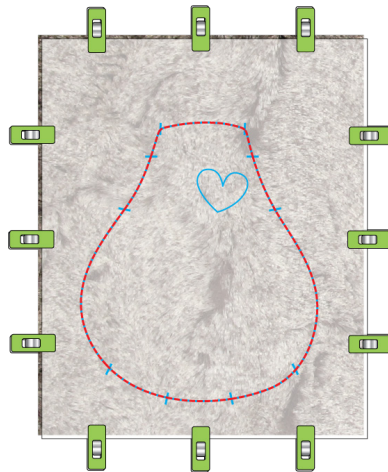
**Note:** Lay Cuddle® with nap following the direction of the arrow, so the bear will feel smooth from head to toe.



### 3.

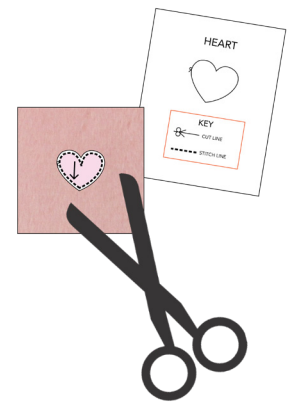
- Use Wonder Clips® to hold the topping to the Cuddle®
- Use a basting stitch to stitch around the bear body outline

**Note:** The basting outline will help align the pattern when stitching the bear body together. It is not necessary to stop and start stitches for the neck, arm, and leg openings in this step.



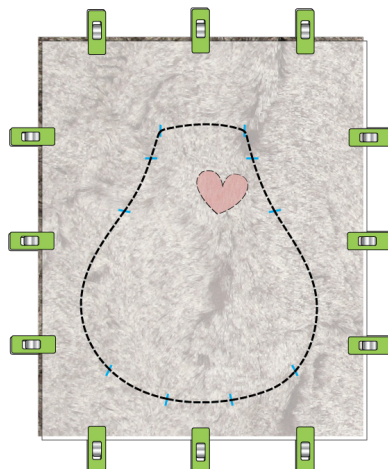
### 4.

- Use the pattern to cut the heart shape from a contrasting piece of Cuddle® (In our sample we used pink.)



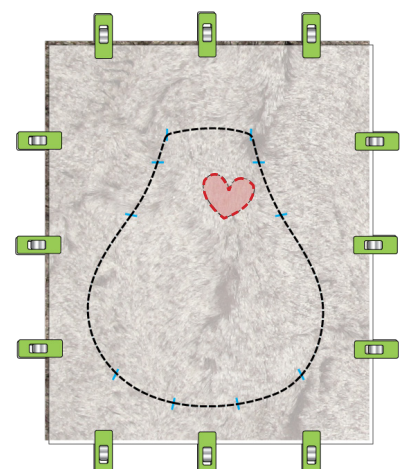
### 5.

- Place heart applique on the heart outline, use a fabric glue stick to hold in place



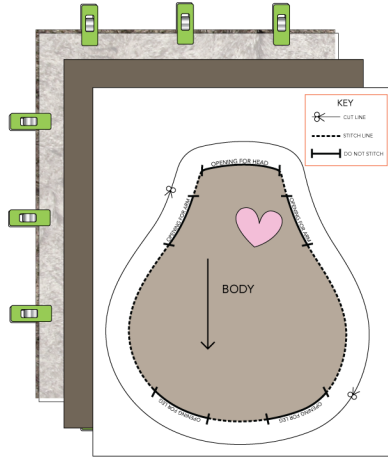
### 6.

- Set sewing machine to a zigzag or blanket stitch, and sew around the heart applique (Shown in **red**.)



# 7.

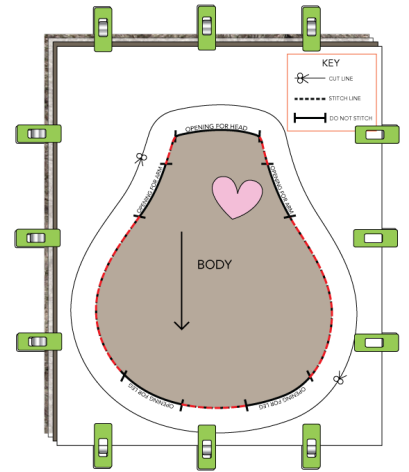
- Place **(1)** piece of Cuddle® **right side down** on top of the bear body
- Place **Part 3: Body** pattern on top of the fabric, being careful to align the pattern outline with the body shape previously stitched



**Note:** Lay Cuddle® with nap following the direction of the arrow, so the bear will feel smooth from head to toe.

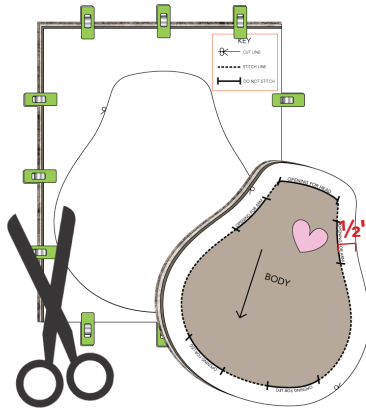
# 8.

- Following the **Stitch Line**, stitch directly on the paper, using a backstitch at the beginning and end of each section around the outline
- Notice where spaces are left open in the **Stitch Line** for inserting the legs and arms



# 9.

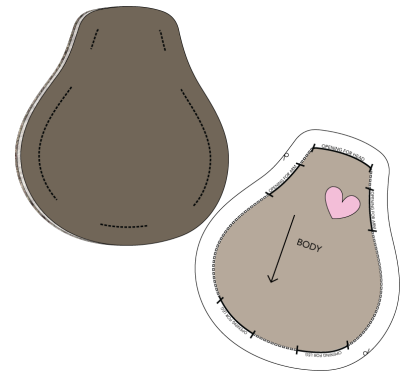
- Following the **Cut Line**, trim around body  $\frac{1}{2}$ " from the **Stitch Line**



**Note:** Cuddle® is a knit fabric which has a natural stretch so it won't be necessary to clip curves before turning inside out. If using cotton fabrics, you will need to clip the curves.

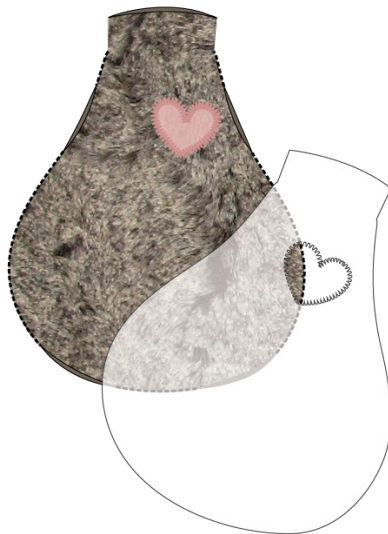
# 10.

- Gently pull paper pattern away from fabric
- Turn body **right side out**



# 11.

- Gently pull topping away from fabric
- Gently press the scallop top of the *Point 2 Point Turner* against the curved seams of the bear to smooth

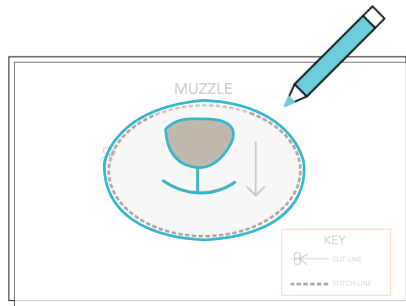


**Note:** Fabric will extend at neck opening after turning body inside out, because of the  $\frac{1}{2}$ " seam allowance.

## Part 4: Muzzle

### 1. Sewing Instructions:

- Lay a piece of water-soluble topping over for **Part 4: Muzzle** pattern
- Trace the muzzle outline, nose, and mouth with a *Fabric Marking Pen*.



### 2.

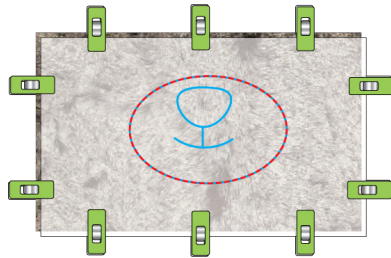
- Place **(1)** piece of Cuddle® fabric right side up.
- Lay traced topping over the fabric (This will keep the pile of the Cuddle® from getting caught in the needle or under the presser foot.)



**Note:** Lay Cuddle® with nap following the direction of the arrow, so the bear will feel smooth from head to toe.

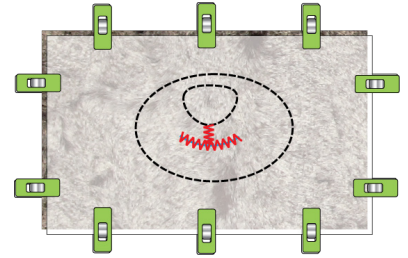
### 3.

- Use Wonder Clips® to hold the topping to the Cuddle®
- Use a basting stitch, to stitch around the muzzle outline and nose



### 4.

- Set sewing machine to a tight zigzag stitch
- Following traced image, stitch the mouth and dimple line that attaches nose to the mouth
- **OR**, with three strands of embroidery floss, use a satin stitch for the mouth and dimple line



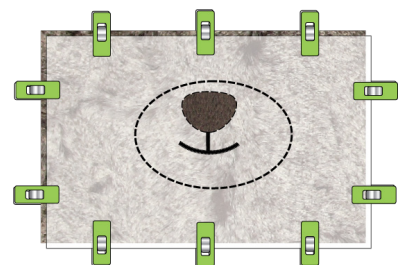
### 5.

- Use the pattern to cut the nose shape from a contrasting piece of Cuddle® (In our sample we used chocolate.)



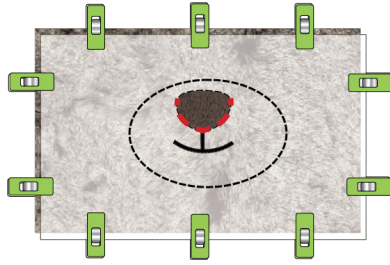
### 6.

- Place over topping on the nose outline
- Use a piece of Kimberbell Paper Tape or fabric glue stick to hold in place



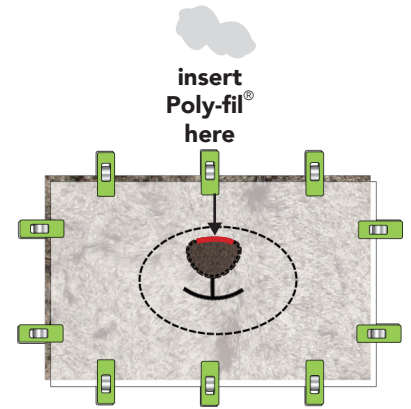
## 7.

- Use a straight stitch to sew around the bear nose, a scant  $\frac{1}{8}$ " from the edge, leaving an opening at the top as indicated on the pattern outline



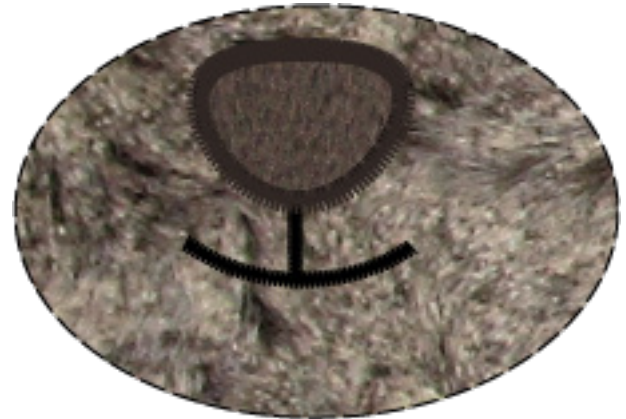
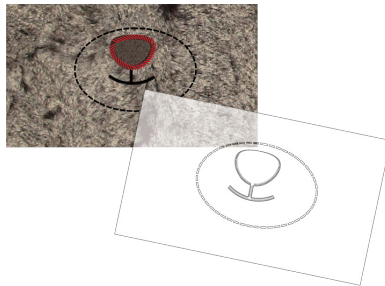
## 8.

- Carefully insert a small amount of Poly-fil® through the opening at the top of the nose
- Return to sewing machine to sew top of the nose closed with a straight stitch



## 9.

- Stitch around the entire nose with a short zig zag or other decorative stitch
- Gently pull topping away from fabric
- Trim around entire muzzle, a scant  $\frac{1}{8}$ " from the stitch line

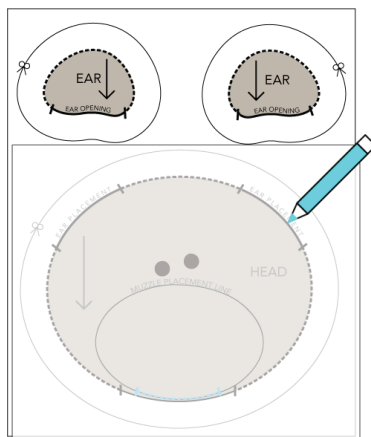


**Note:** Complete **Part 4: Muzzle** before starting **Part 5 Head and Ears**.

## Part 5: Head and Ears

### 1. Sewing Instructions:

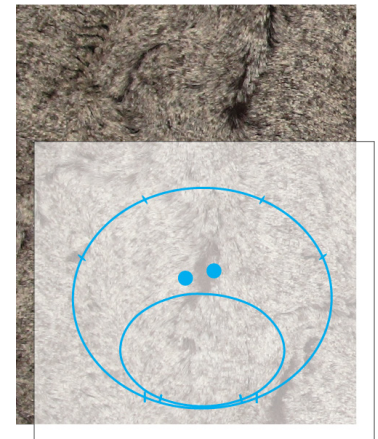
- Lay a piece of water-soluble topping over for **Part 5: Head and Ears** pattern
- Trace the head and outline, plus muzzle, and eyes with a *Fabric Marking Pen*



### 2.

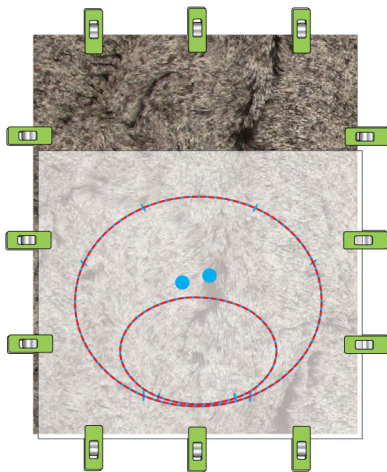
- Place **(1)** piece of Cuddle® fabric **right side up**
- Lay traced topping over the fabric (This will keep the pile of the Cuddle® from getting caught in the needle or under the presser foot.)

**Note:** Lay Cuddle® with nap following the direction of the arrow, so the bear will feel smooth from head to toe.



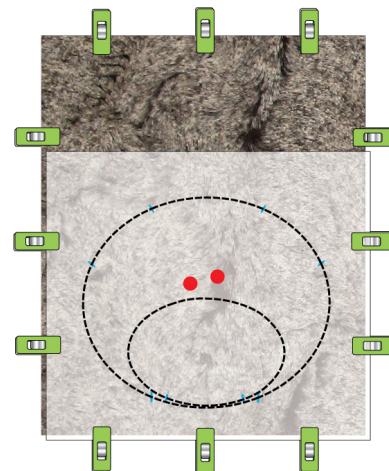
### 3.

- Use Wonder Clips® to hold the topping to the Cuddle®
- Use a basting stitch, to stitch around the bear head outline and muzzle outline



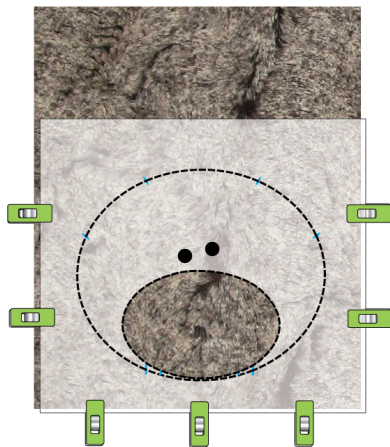
### 4.

- With three strands of embroidery floss, use a satin stitch to fill the bear's eyes. (The topping will keep your hand embroidery stitches smooth and will be pulled away in a later step.)



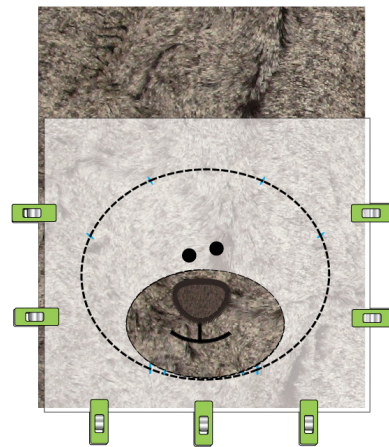
### 5.

- Gently pull topping away from inside the muzzle outline only



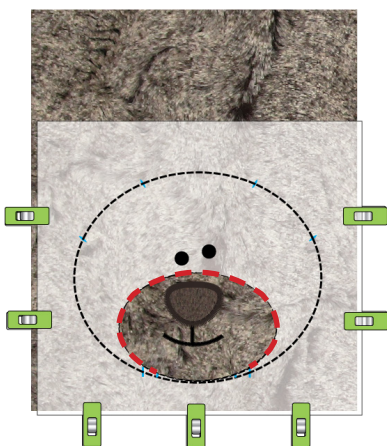
### 6.

- Align finished **Part 4: Muzzle** on top of the bear face
- Use a piece of Kimberbell Paper Tape or fabric glue stick to hold in place



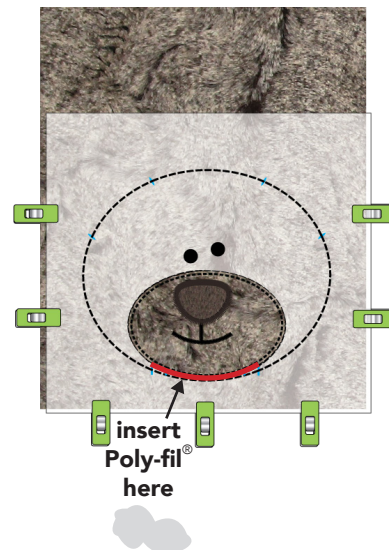
### 7.

- Use a straight stitch to sew around the bear muzzle, a scant 1/8" from the edge, leaving an opening at the base as indicated on the pattern outline



### 8.

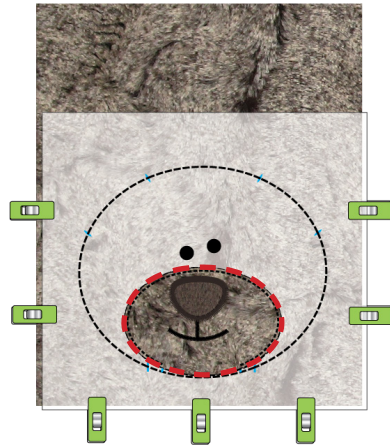
- Carefully stuff Poly-fil® through the opening at the base of the muzzle
- Return to sewing machine to sew base of the muzzle closed with a straight stitch





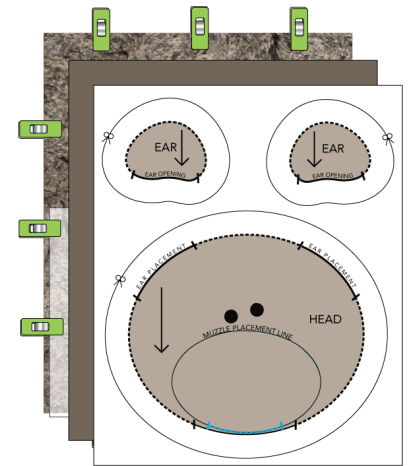
## 9.

- Stitch around the entire muzzle with a short zig zag or other decorative stitch



## 10.

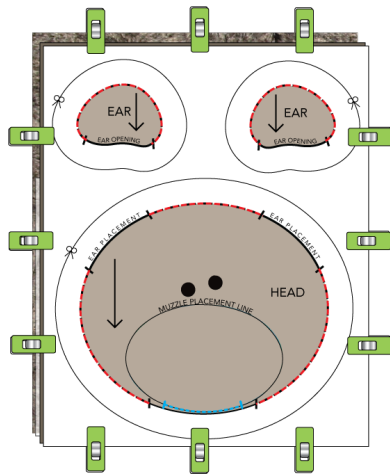
- Place **(1)** piece of Cuddle® right side down on top of the bear head
- Place copied pattern for **Part 5: Head and Ears** on top of the fabric, being careful to align the pattern outline with the head shape previously stitched



**Note:** Lay Cuddle® with nap following the direction of the arrow, so the bear will feel smooth from head to toe.

## 11.

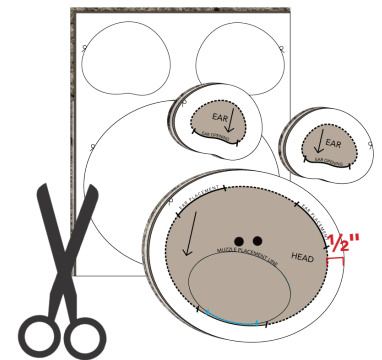
- Use Wonder Clips® to hold the paper to the Cuddle®
- Following the Stitch Line, stitch directly on the paper, using a backstitch at the beginning and end of each section around the Head and Ears outline



**Note:** Notice where spaces are left open in the Stitch Line for inserting the ears and neck.

## 12.

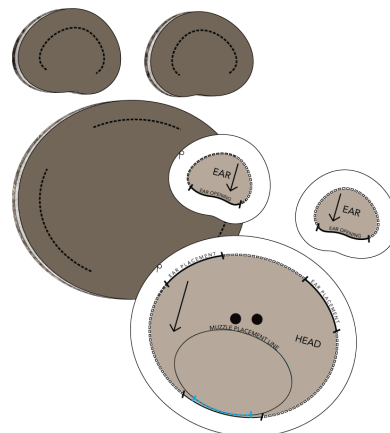
- Following the Cut Line, trim around the Head and Ears  $\frac{1}{2}$ " from the Stitch Line



**Note:** Cuddle® is a knit fabric which has a natural stretch so it won't be necessary to clip curves before turning inside out. If using cotton fabrics, you will need to clip the curves.

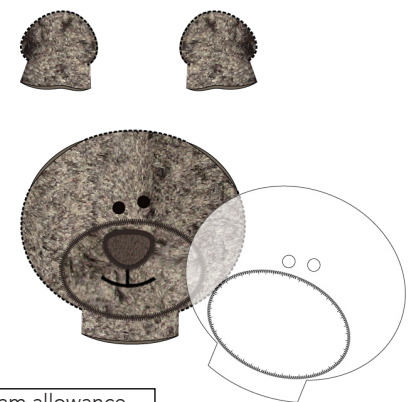
## 13.

- Gently pull paper pattern away from fabric



## 14.

- Turn Head and Ears **right side out**
- Gently pull topping away from fabric
- Gently press the scallop top of the *Point 2 Point Turner* against the curved seams of the bear to smooth

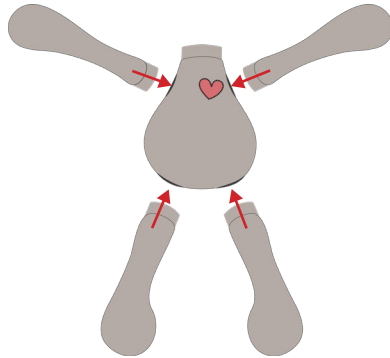


**Note:** Because of the  $\frac{1}{2}$ " seam allowance, fabric will extend at neck and ear openings after turning the head and ears inside out. Tuck the extra fabric inside when stitching the bear together.

## Part 6: Bear Assembly Instructions

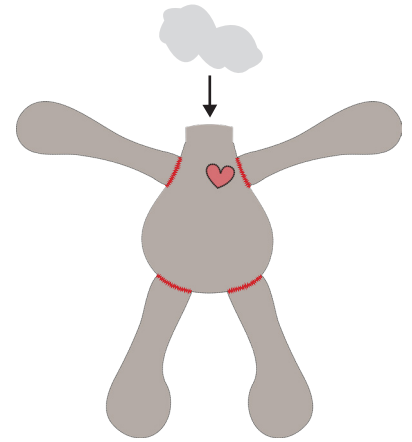
1.

- Place arms and legs in the correct openings on the bear body (Shown in **red**.)
- Pin in place



2.

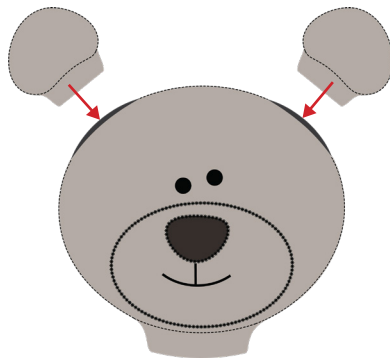
- Change bobbin thread to match top thread
- With a sewing machine, attach arms and legs to body using a wide zig zag stitch (Shown in **red**.)
- Carefully stuff Poly-fil® into body



**Note:** The zig zag stitch will "sink into" the long fibers of the Cuddle® fabric. Check front and back of bear to make sure the seam is closed and limbs are securely attached.

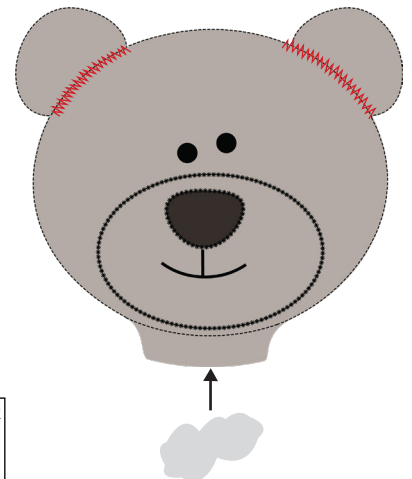
3.

- Place ears in the openings on the bear head (Shown in **red**.)
- Pin in place



4.

- With a sewing machine, attach ears to head using a wide zig zag stitch (Shown in **red**.)
- Carefully stuff Poly-fil® into head



**Note:** Check front and back of bear to make sure the seam is closed and ears are securely attached.

5.

- Place head in the neck opening on the bear body
- Pin in place
- Carefully and lightly stuff Poly-fil® into the bears neck (Be careful not to overstuff.)

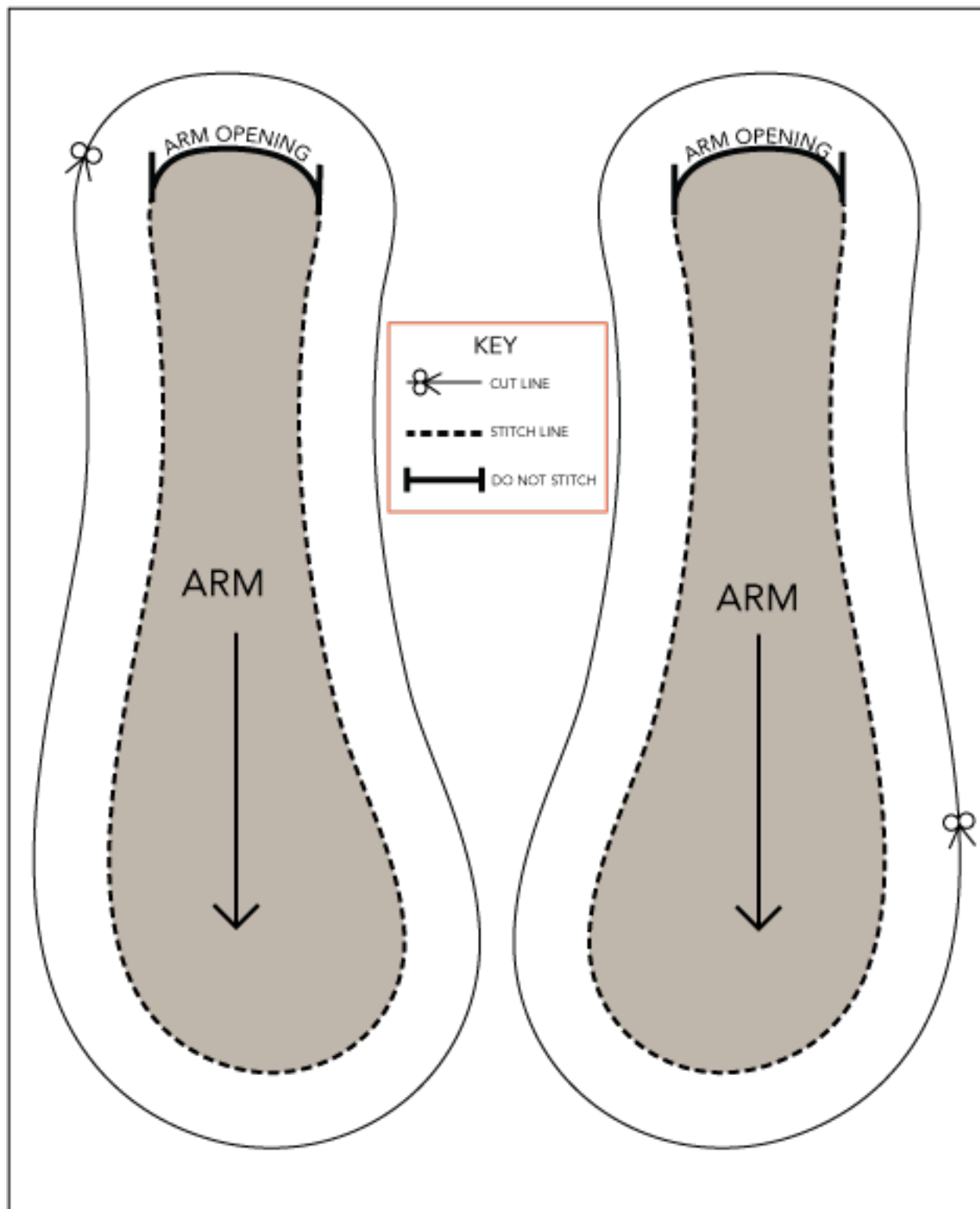


6.

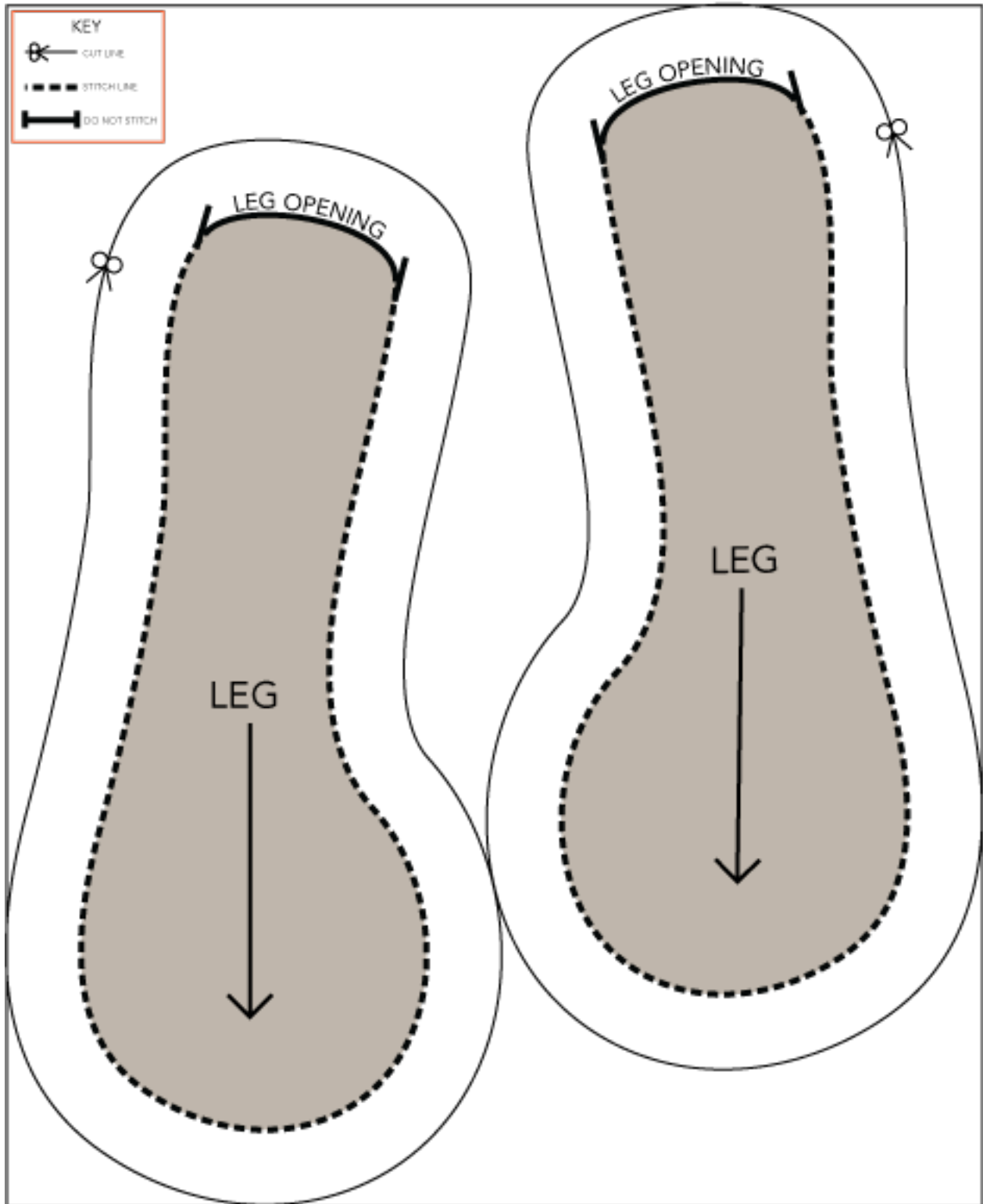
- Using a needle and thread, sew opening on bear neck closed (Shown in **red**.)
- See tips for making the Kimberbear with demonstrations of Clover tools used at [kimberbell.com/kimberbear](http://kimberbell.com/kimberbear)



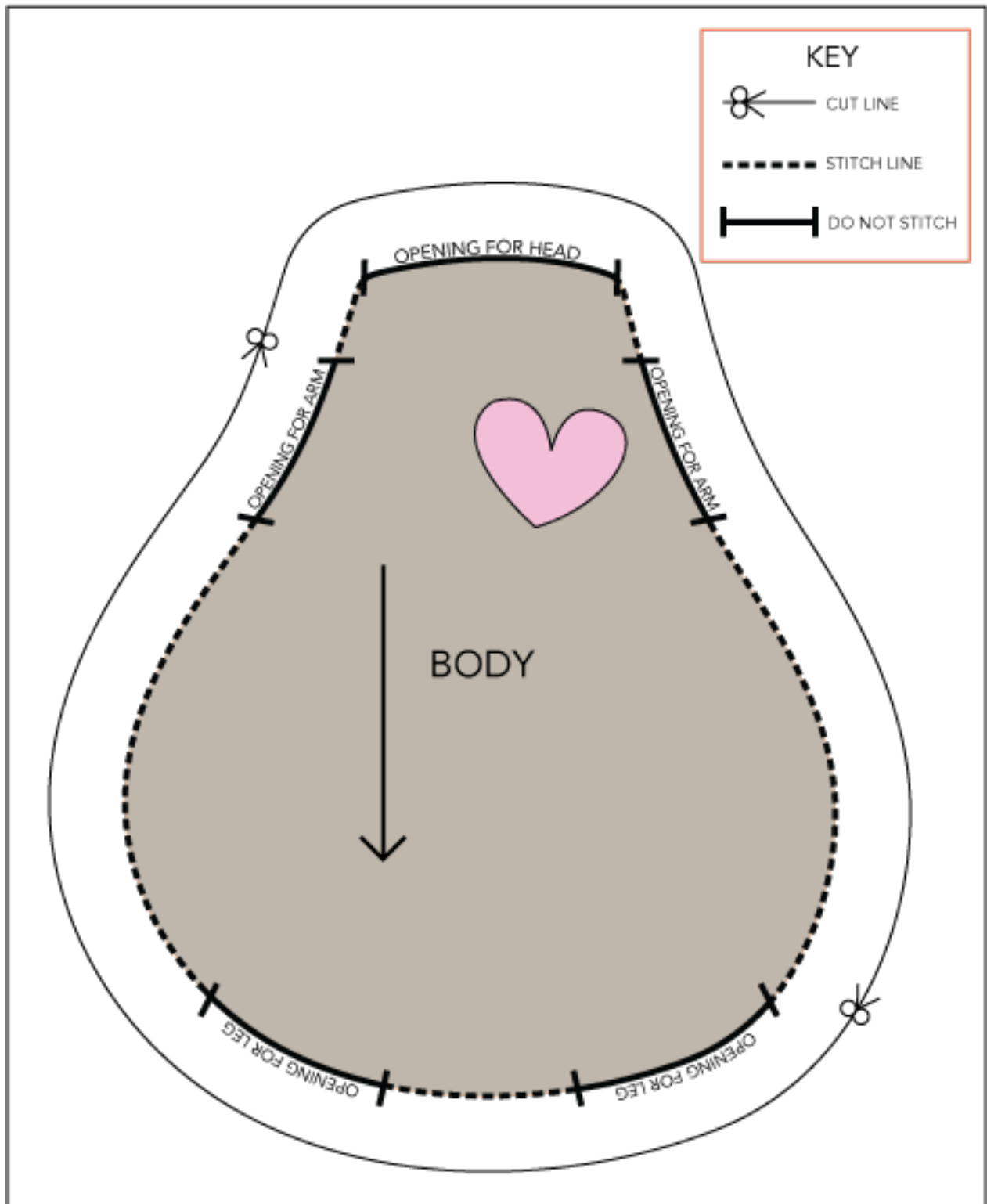
# Kimberbear™ Arms



# Legs

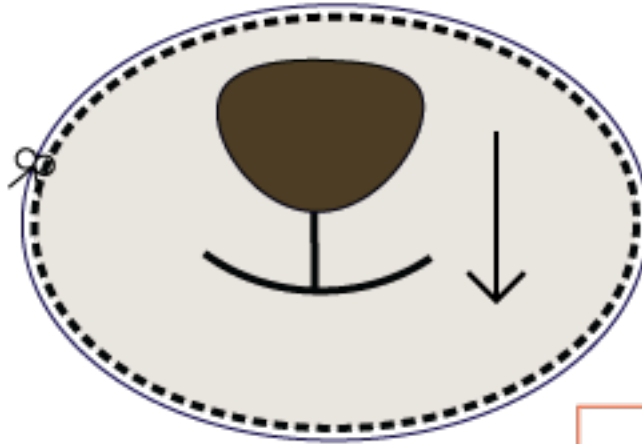


# kimberbear™ Body





# MUZZLE, Heart, and Nose

## MUZZLE



KEY


 CUT LINE


 STITCH LINE

## HEART

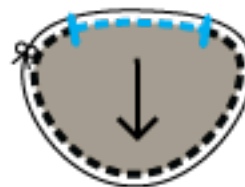


KEY


 CUT LINE


 STITCH LINE


## NOSE



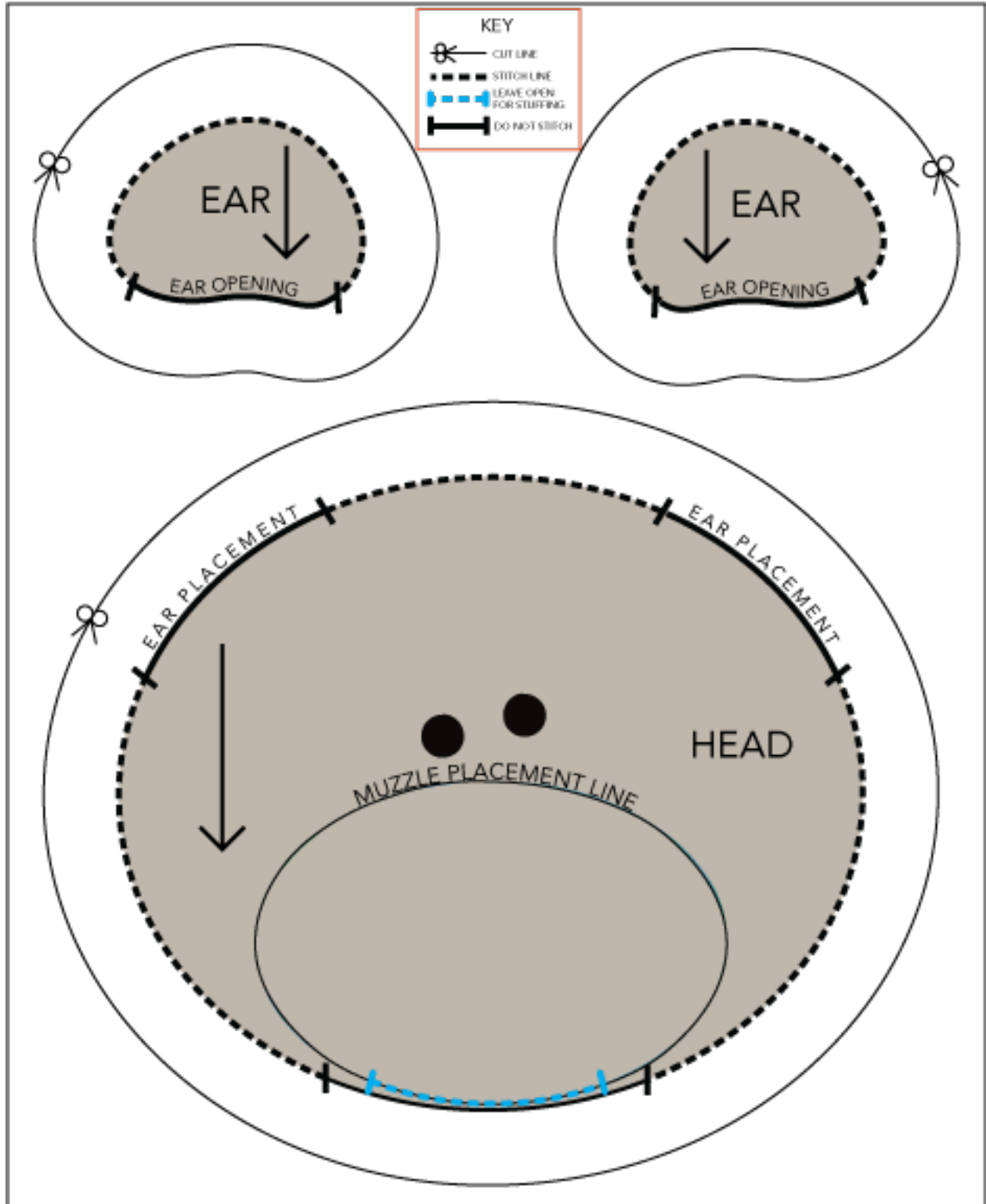
KEY

 CUT LINE

 STITCH LINE

 LEAVE OPEN FOR STUFFING

# Kimberbear™ Head and Ears





# KimberBear™

KINDLY SPONSORED BY:



The gift of compassion seems inherent in our industry. What begins as a desire to create, naturally develops an eagerness to share what we have made. This is the true joy of creativity. You are invited to join our family of partners to make bears for:

- ♥ children's hospitals or treatment centers
- ♥ police departments and fire stations
- ♥ child and family safe houses or homeless shelters

While you may personally make any number of bears, we also know serving together is twice blessed. Please take pictures of your embroidery club, quilt guild, office staff, or other group stitching Kimberbears and tell us about the special place that will receive the bears you make.

Post on social media with [#kimberbearstory](https://www.instagram.com/kimberbearstory)



Become a part of our heartfelt initiative as we donate baskets of bears throughout the year and on these two important days of celebration.

National Children's Day ♥ June 14

National Teddy Bear Day ♥ September 9

For details and to download additional copies of the free pattern for sewing or machine embroidery with design files, please visit [kimberbell.com/kimberbear](http://kimberbell.com/kimberbear)

KIMBERBELL®

FEATURE QUILTS  
FOR SEWING &  
MACHINE EMBROIDERY

- BENCH PILLOW SERIES
- INNOVATIVE IN-THE-HOOP PROJECTS
- EMBELLISHMENTS & TOOLS
- EMBROIDERY BLANKS
- EVENTS and more!

Experience THE JOY OF Creativity™