

Welcome to the Handi Quilter Education Webinar

May 10, 2012

HQ Sweet Sixteen

This Webinar is being recorded. You will find it on the Education tab on HandiQuilter.com beginning tomorrow.

We've got a special offer just for our Webinar participants. Stick around to the end for a coupon.

While you're waiting for the Webinar to begin, make sure your computer speakers are on, so you will be able to hear us.

Quilted bags by Karlee Porter, free-motion quilted on the HQ Sweet Sixteen, original designs.



HQ SWEET
SIXTEEN®

Handi
Quilter
Designed by a Quilter, for Quilters!

2012
Webinars

Your presenter today is
Vicki Hoth
Handi Quilter
Education Coordinator



Assisting her is
Karlee Porter
Handi Quilter
Team Member

While we welcome your questions, we have a lot of material to cover today and may not be able to answer all of them. If we miss your question, please post it to Ask an HQ Expert on the Forum on HandiQuilter.com where it will get the attention it deserves.

HQ SWEET
SIXTEEN®

Handi
Quilter
Designed by a Quilter, for Quilters!

2012
Webinars

Who wants to quilt with a Sit-down Longarm?

1. A Quilter who already has the skill set for free-motion “push-through” quilting and doesn’t have the time or inclination to tackle stand-up carriage-style quilting.
2. A Quilter who doesn’t have the physical stamina to stand up to quilt all day.
3. A Quilter who doesn’t have room for a 12-foot frame (the HQ Sweet Sixteen has a 30” x 36” footprint).



 HQ SWEET
SIXTEEN®

 Handi
Quilter
Designed by a Quilter, for Quilters!

2012
Webinars

What quilt size limitations are there with the HQ Sweet Sixteen?

1. There are no limitations to quilt size.
2. The important thing to remember is: NEVER LET YOUR QUILT HANG OFF THE EDGES OF THE TABLE.
3. For large quilts, you can accomplish that by using table extensions (available from Handi Quilter) or by placing the table up against furniture you already own.



HQ SWEET
SIXTEEN®

Handi
Quilter
Designed by a Quilter, for Quilters!

2012
Webinars

What accessories are available for the HQ Sweet Sixteen?

1. Every quilter would benefit from owning the HORIZONTAL SPOOL PIN. This handy thread holder is perfect for delicate threads, threads that feed best horizontally (as opposed to being fed vertically up and away from a cone) or for using up those small spools of thread you have left over.



2. The OPEN-TOE HOPPING FOOT is a good choice for thread-painting, quilting around appliqué or printed lines or for anyone who wants more visibility of the needle area.



Does the HQ Sweet Sixteen have stitch regulation available?

1. Yes it does. TruStitch™ stitch regulation will be available June 1, 2012.
2. If your Sweet Sixteen was shipped after April 10, 2012, it is TruStitch-ready and you can “plug and play”.
3. If your Sweet Sixteen was shipped before that time, it will require a factory-installed software upgrade. Both the upgrade and the shipping are free to U.S. owners. (Overseas owners must speak to their local distributors for details. There may be a charge.)



 **HQ SWEET
SIXTEEN®**

 **Handi
Quilter**
Designed by a Quilter, for Quilters!

2012
Webinars

How does TruStitch work?

1. TruStitch is a full-visibility stitch-regulation system.
2. Components include the Controller, the Receiver, the Magnet and the Coaster, plus the power supply, charging cord and other items needed for installation.



How does TruStitch work?

1. The wireless Controller is placed under the quilt sandwich and is held in a natural position with your hand while free-motion quilting.
2. The Controller tracks its own movement across the tabletop and sends messages to the Receiver, which translates the motion into even-length stitches.



How does TruStitch work?

1. The Magnet holds the Controller in place on the quilt sandwich, allowing for “hands-free” operation.



How does TruStitch work?

1. The Coaster allows you to use the Controller when quilting borders and near the edge of the quilt sandwich.



Is TruStitch compatible with my older-style HQ Sixteen Sit-down machine?

1. Unfortunately, not at this time. Handi Quilter hopes to be able to offer a version that will work with the older-style machines, but there isn't a timeline available.



When will TruStitch be available?

1. TruStitch will begin shipping to HQ Retail locations beginning June 1, 2012.
2. MSRP is \$995.00 USD plus tax and shipping.
3. HQ Retailers are accepting pre-orders right now.



 HQ SWEET
SIXTEEN®

 Handi
Quilter
Designed by a Quilter, for Quilters!

2012
Webinars

How do I know how fast I'm stitching?

1. The HQ Sweet Sixteen has speed-control, which enables you to focus on stitching and not on what your foot is doing.
2. The machine stitches 1500 stitches-per-minute (SPM) at top speed = 100%
3. Speeds are set as percentages. For example, 50% = 750 SPM



What are Presets?

1. The three blue buttons on the main screen are user-defined preset speeds. YOU choose your three favorite “go-to” speeds.

2. Some people like to stitch at 20% around appliqué for greater control.

3. The same quilter may choose 75% for large overall meanders.



What's the difference between the Needle UP/DOWN button and the Needle Icon in the Center of the Screen?

1. The Needle UP/DOWN setting enables the quilter to set the default for where the needle lands each time you stop stitching.
2. The Needle Icon is a toggle button. It makes the needle take a half stitch. If the needle is up, it will go down when you push the button.
3. Use the icon button to bring the bobbin thread up for starting and stopping.



How do I Start and Stop a Stitching Line?

There's no reverse on this machine.

1. Because there are no feed dogs on the HQ Sweet Sixteen, there is no way to provide a reverse action except to produce it by moving the fabric back and forth.
2. We recommend that you stitch tiny stitches in place to lock your stitches when starting and stopping a line of stitching.
3. You can also start a line by stitching tiny stitches and allowing them to get longer as you move away from the starting point.

Won't that Leave a Knot?

1. Yes, it does. For casual quilts, this won't matter. But if you're doing work to enter into judged competition, consider a different way to start and stop.

2. Leave long tails of thread at the beginning and end of each line of stitching. After you've finished quilting, thread them into a hand needle and bury the stitches in the quilt after taking some tiny, invisible stitches to hold the stitching in place.

The Table: Adjusting the Table Height

“Having the table set to the correct height for your body helps to prevent fatigue and body aches.”

Sit in front of the table and bend your arms at a 90 degree angle. Your hands should be able to rest flat on the table or just slightly drop to the tabletop.

Determine how much you need to raise or lower the table and adjust the legs accordingly.



Adjusting the Table Height

With a partner lifting one end of the table (to take the weight off the table feet), kneel beside the table legs and squeeze the adjustment knobs together to loosen the table feet.



Adjusting the Table Height

Raise or lower to desired height and release knobs. Partner gently lowers table to floor. Repeat for other end.



TNT: A Quick Look at Threads, Needles and Tension

Unlike your domestic sewing machine, the HQ Sweet Sixteen uses a round shank needle.

The round shank makes it easy to adjust the needle in case of stitching problems.



Go to HandiQuilter.com/Webinars to see the TNT Webinar for more information.

 **HQ SWEET
SIXTEEN®**

 **Handi
Quilter**
Designed by a Quilter, for Quilters!

2012
Webinars

TNT

The round shank makes it easy to adjust the needle in case of stitching problems.

However, it also makes it easy to put the needle in wrong.



Go to HandiQuilter.com/Webinars to see the TNT Webinar for more information.

 **HQ SWEET
SIXTEEN®**

 **Handi
Quilter**
Designed by a Quilter, for Quilters!

**2012
Webinars**

TNT

The Groove is the indentation in the front side of the needle



Photo shows HQ¹⁸ Avanté machine. All TNT information is the same for all HQ machines.

TNT

It is important to choose the right size needle for your thread weight, so the thread will ride comfortably in the groove as it goes through the fabric.

Thicker thread =
larger needle size
(bigger number)



TNT

The SCARF is a cut-out portion of the back side of the needle, positioned in the machine so that the hook passes by it and catches the thread loop.



Positioning the Needle

The placement of the needle in the machine is important. In Handi Quilter quilting machines, the groove goes to the front of the machine, with the scarf to the back.



The Basics of Stitch Formation

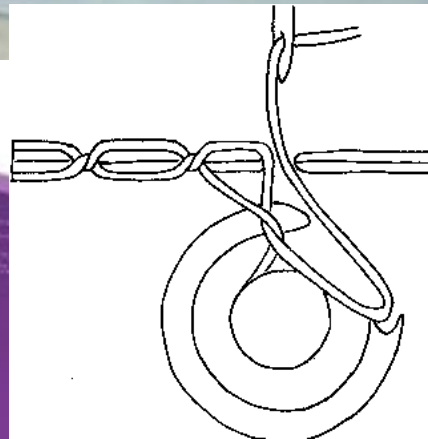
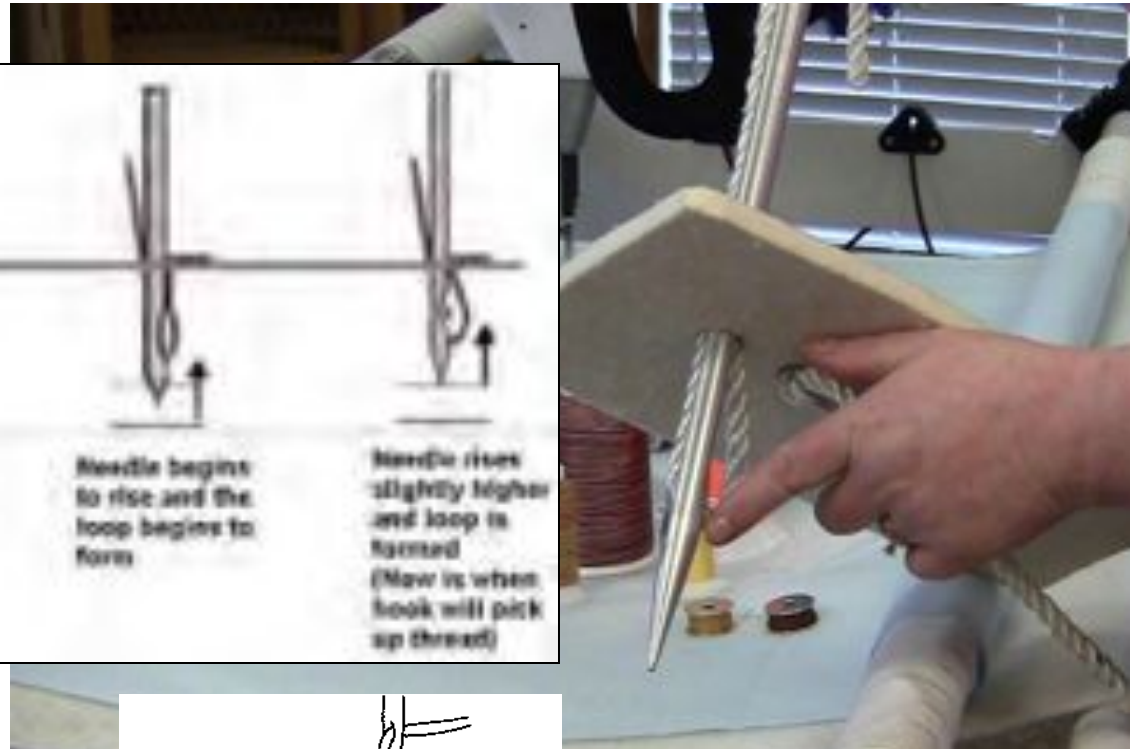
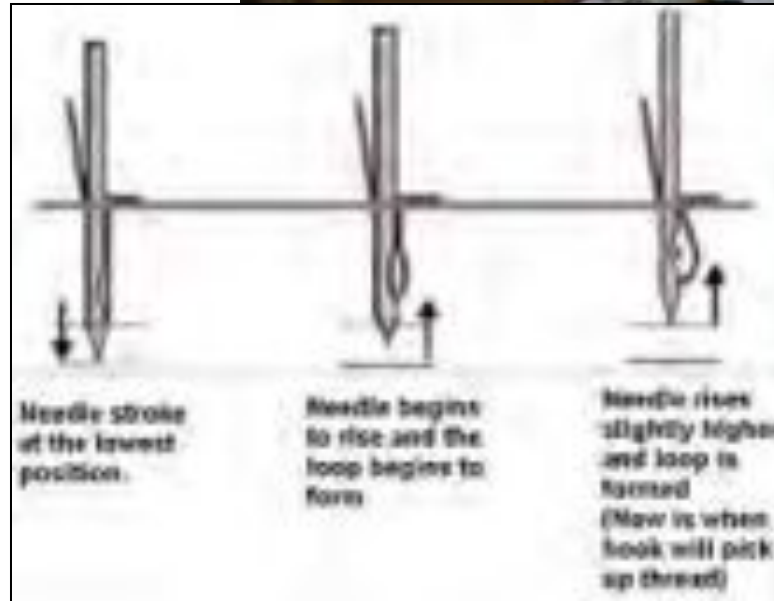
As the needle enters the fabric, the thread is carried along in the groove.



The Basics of Stitch Formation

When the needle comes back up, friction holds the thread below the quilt sandwich, causing a loop to form.

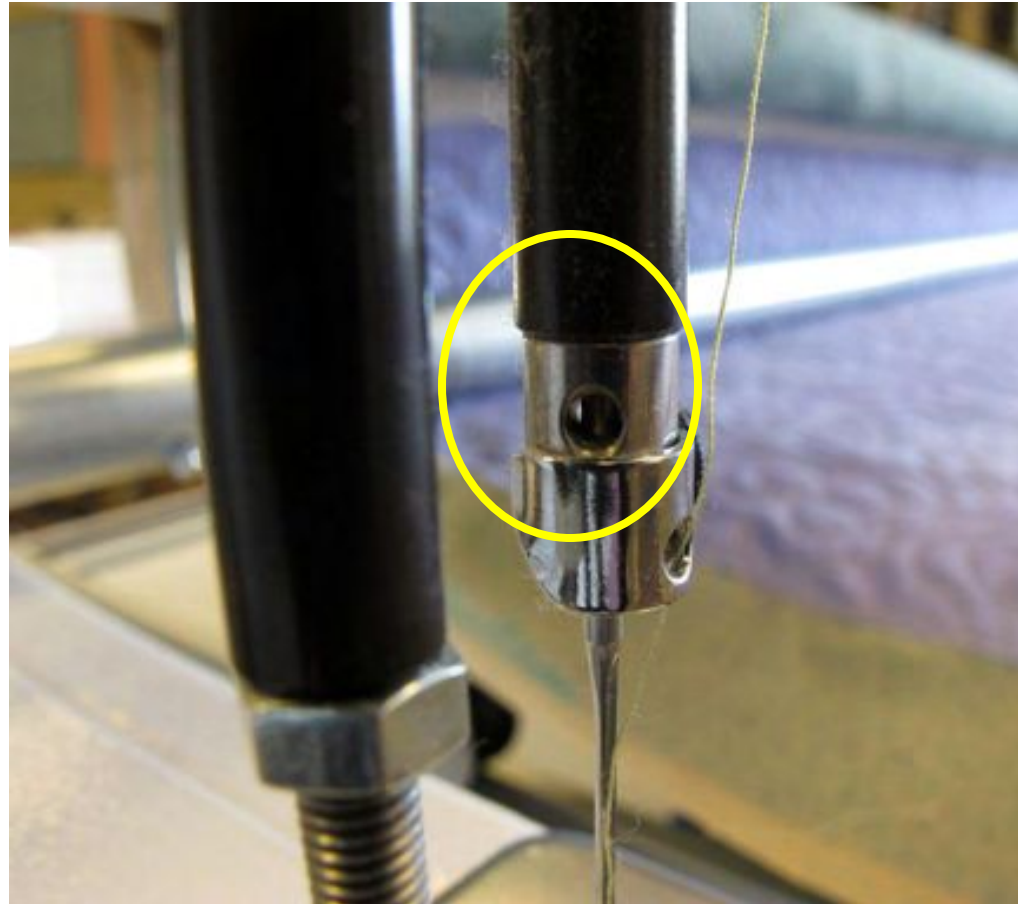
The rotary hook then rotates around, grabs the loop, bringing it around the bobbin case, making the lock stitch.



Positioning the Needle.

It is very important that the needle be inserted all the way up into the needle bar.

Handi Quilter machines provide a “sight hole” in the needle bar. Look into the hole to confirm that the butt of the needle is inserted all the way.



Positioning the Needle.

Because the round-shanked needle will fit in the needle bar in any orientation (unlike a flat-shanked needle which fits in only one way), it is important to position the needle correctly with the eye of the needle in the “6 o’clock” position.



Using a pin in the eye of the needle helps with positioning.

Positioning the Needle.

Sometimes, if you experience skipped stitches, slightly rotating the needle to the “6:30” position will solve the problem, because it allows the hook to catch the loop sooner.



Positioning the Needle.

If you experience shredding, slightly rotating the needle toward the “5:30” position might solve the problem, because it would delay the time when the hook grabs the loop.

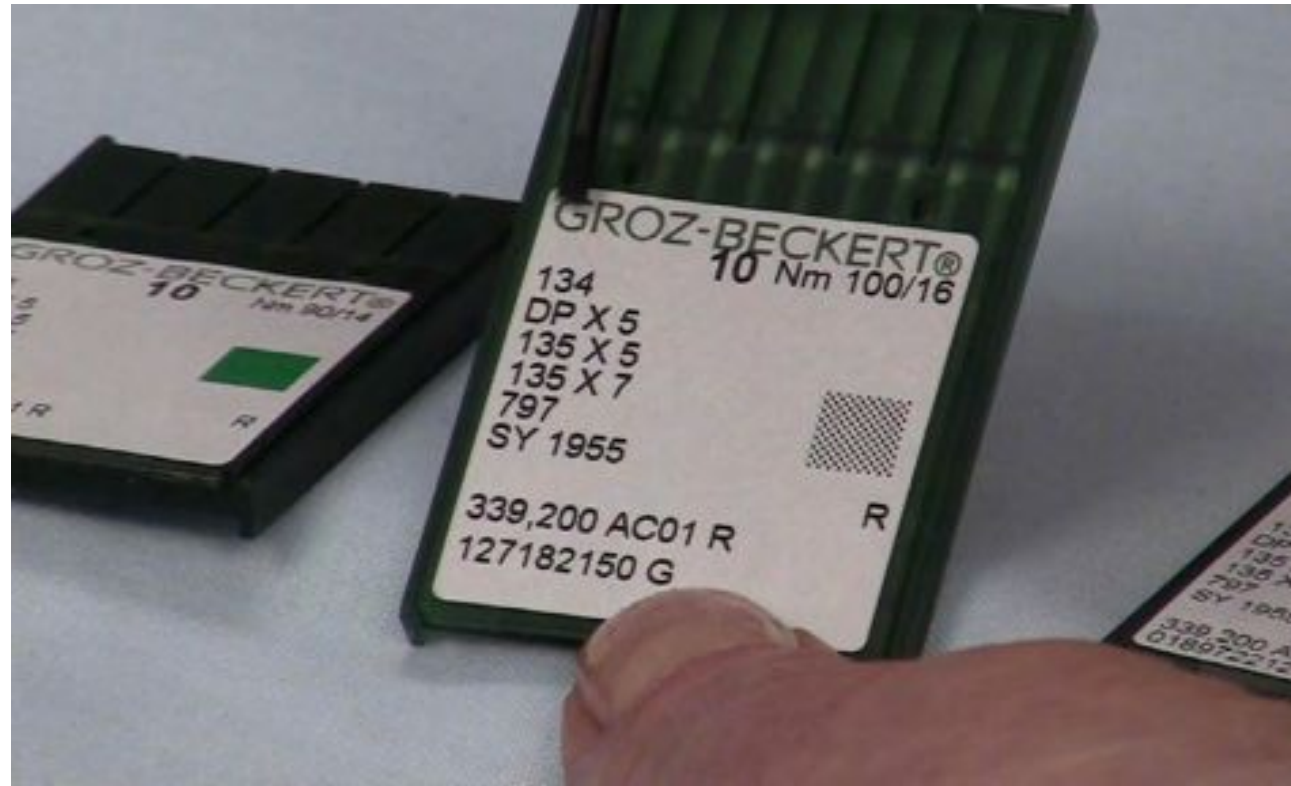


Needle Sizes

It is important to purchase needles that are the right needle system. Handi Quilter uses the 134 (135 X 7) system.

Using the wrong needle system is a recipe for big problems.

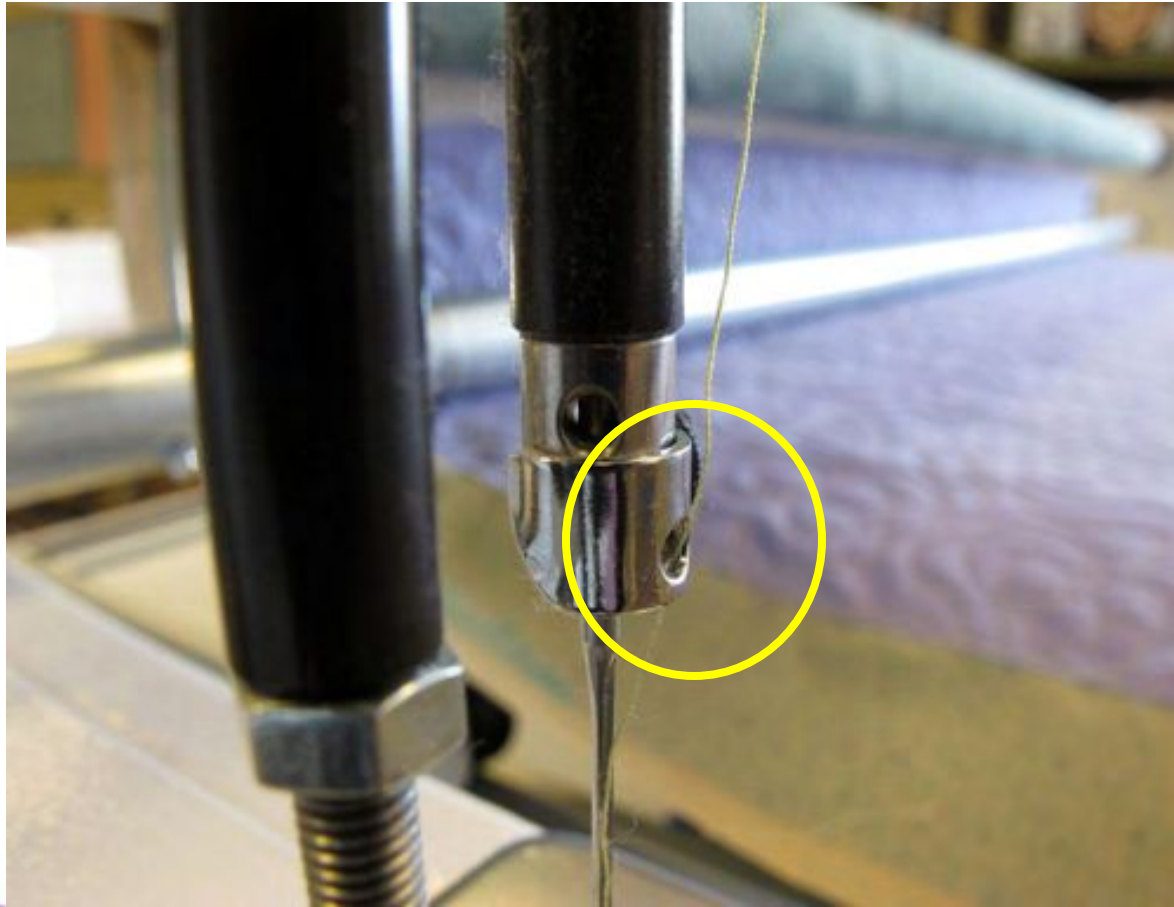
Handi Quilter sells needles for their longarm quilting machines in sizes 12, 14, 16, 18 and 20 (125).



A Threading Tip

The thread path on the HQ Sweet Sixteen is pretty traditional, but some quilters miss the final thread guide.

There is a collar on the needle bar, just above the needle. Make sure you thread the thread through the hole in the collar, before threading the needle from front to back.



 HQ SWEET
SIXTEEN®

 Handi
Quilter
Designed by a Quilter, for Quilters!

2012
Webinars

Threading Tip: Horizontal Spool Pin

For threads on spools, especially delicate threads, we recommend using the horizontal spool pin.

This allows the threads to bypass two thread guides, which means there's less tension on the thread to start with.



Thread Tip: Start with the Bobbin

It's important that bobbins are wound properly.

A “soft” bobbin, one that's wound too loosely, will be spongy.

When a soft bobbin unwinds, the individual thread is pulled down into the bobbin and it snarls and jams, causing feeding problems and skipped or broken stitches.



Adjusting Bobbin Case Tension is the Foundation of the Perfectly-Balanced Stitch

When adjusting tensions the HQ Sweet Sixteen, it's important to remember this point:

START WITH THE BOBBIN FIRST!



Go to HandiQuilter.com/Webinars to see the TNT Webinar for more information.

 **HQ SWEET
SIXTEEN®**

 **Handi
Quilter**
Designed for a Quilter, by a Quilter

2012
Webinars

The “SECRET” to Perfect Tension

Only after the bobbin case tension is set, do you adjust the top tension.



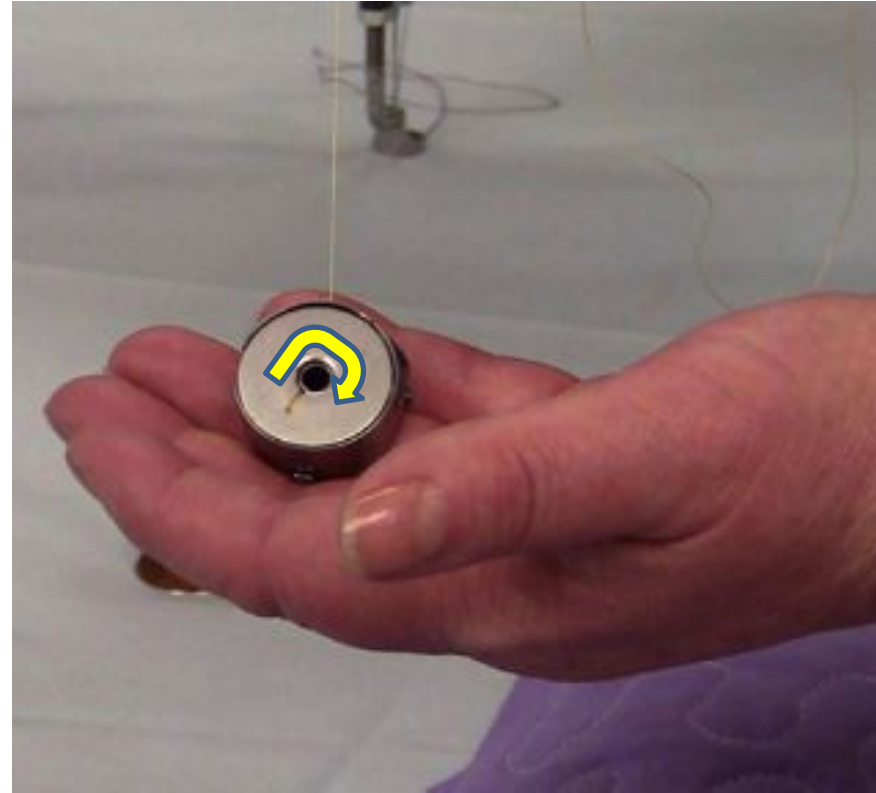
Lighter-weight threads will need a lighter tension both in the bobbin and on top.

Checking Bobbin Tension

Place the bobbin in the case and bring the thread out through the slit.

Check to see that the bobbin turns clockwise when pulling on the thread (and viewing it from this side).

Starting with a FULL bobbin gives you the correct weight when checking bobbin case tension.



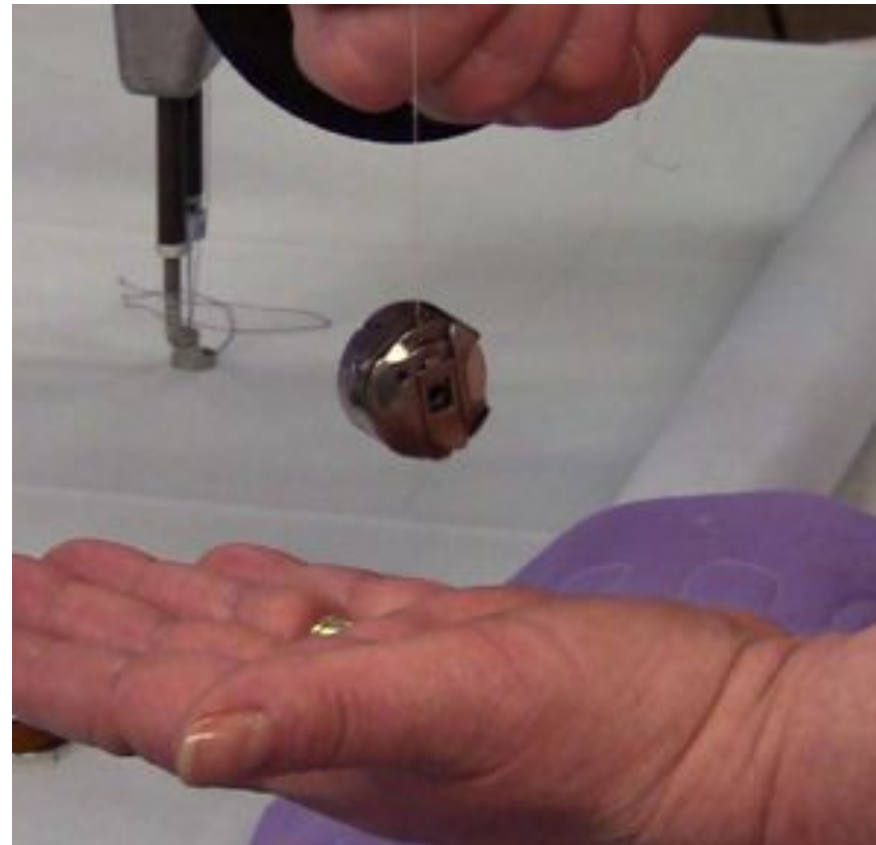
Checking Bobbin Tension

Use the Drop Test

Lift up the thread. When tension is set correctly, the bobbin case will lift from your hand, then will gently fall back to your hand, like a spider crawling down its web.

PERFECT TENSION:

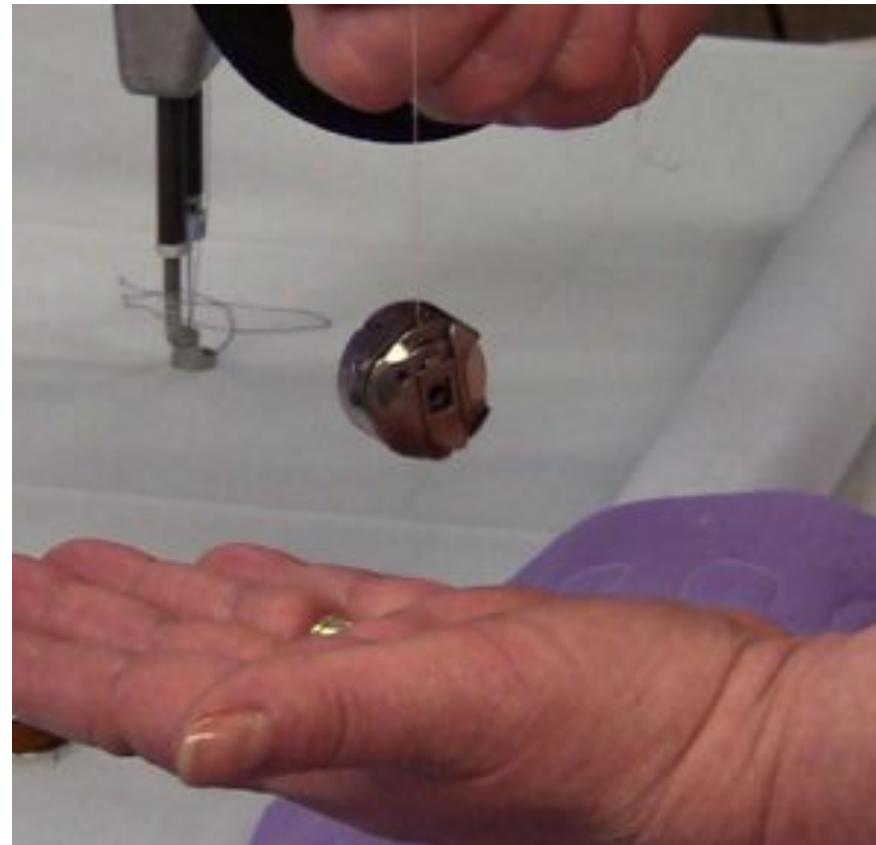
Bobbin case falls slowly back down to hand without jiggling or bouncing.



Checking Bobbin Tension

If the bobbin case does NOT fall down to your hand, the tension is too tight.

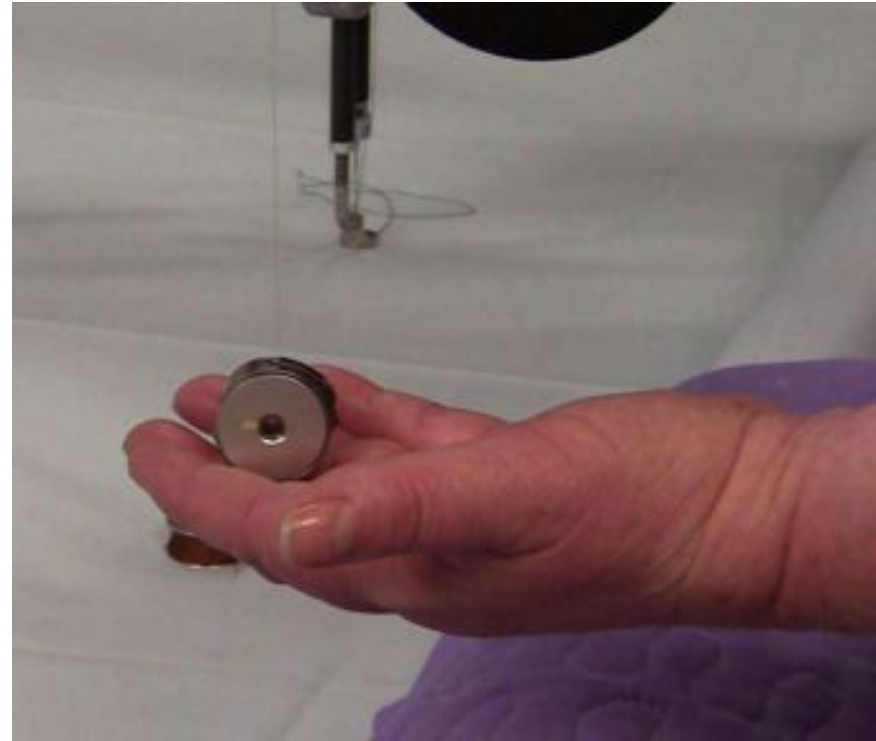
TENSION TOO TIGHT
Bobbin case does not come down



Checking Bobbin Tension

If the bobbin case won't lift from your hand, the tension is too loose.

TENSION TOO LOOSE
Bobbin case won't lift from hand



Adjusting Bobbin Tension

There are two screws on the side of the bobbin case. The adjustment screw is the larger of the two and has a “circle” around it.

Turn the screw right to tighten; left to loosen. The adjustments are minute. Think of them as “ticks of a clock”.

RIGHTY TIGHTY

LEFTY LOOSEY



Adjusting Bobbin Tension

There are two screws on the side of the bobbin case. The adjustment screw is the larger of the two and has a “circle” around it.

Turn the screw right to tighten; left to loosen. The adjustments are minute. Think of them as “ticks of a clock”.

RIGHTY TIGHTY

LEFTY LOOSEY



Checking Stitches

It's important to have a sample quilt sandwich available for testing before stitching on your quilt.

After adjusting the bobbin case to perfect tension, stitch a little to check your stitch balance.



Checking Stitches

You are looking for perfectly balanced stitches that meet in the middle of the quilt sandwich.

Each stitch should go into the quilt and should appear as a separate stitch, on both the top and bottom.



Checking Stitches

TENSION IMBALANCE

Tight Top Thread

Diagram A



Loose Top Thread

Diagram B



Checking Stitches

These top stitches are laying on top of the quilt. This means the top tension is too tight.

You need to loosen your top tension.



Checking Stitches

We have painted the dot on the tension knob white, so you can see it in this photo.

Turn the knob to the left to loosen the tension.



Checking Stitches

Adjusting the tension knob is different from the bobbin case adjustments.

Often you will need to make half and full turns of the knob to adjust.



Checking Stitches

These top stitches are too loose.



Checking Stitches

Here's a view of those loose top stitches from the back side.

You will need to tighten the top tension by turning the tension knob to the right.



Checking Stitches

A thread nest like this could be the sign of not having the thread flossed into the tension dial.



Now you've got it! Perfect Tension, Perfect Stitches.

BUT, what if you have perfect tension and balanced stitches and your thread still breaks?



 **HQ SWEET
SIXTEEN®**

 **Handi
Quilter**
Designed by a Quilter, for Quilters!

2012
Webinars

Here's the SECRET!

If you have perfect tension and balanced stitches and your thread still breaks, it is because

YOUR TENSION IS SET TOO TIGHT IN BOTH THE BOBBIN AND THE TOP FOR THE THREAD YOU'RE USING.

The answer:

Start again with the bobbin and loosen the tension. Then readjust the top tension.



Sandwiching the Quilt



Safety Pins
or Straight Pins w/PinMoors

Sandwiching the Quilt



**Spray Baste or
Thread Baste**

Managing the Bulk: Rolling



HQ SWEET
SIXTEEN®

Handi
Quilter
Designed by a Quilter, for Quilters!

2012
Webinars

Managing the Bulk: Fan-Folding



HQ SWEET
SIXTEEN®

Handi
Quilter
Designed by a Quilter, for Quilters!

2012
Webinars

Managing the Bulk: Puddling



HQ SWEET
SIXTEEN®

Handi
Quilter
Designed by a Quilter, for Quilters!

2012
Webinars

Free-Motion Quilting: Hand Placement



Machingers

HQ SWEET
SIXTEEN®

Handi
Quilter
Designed for a Quilter, by a Quilter

2012
Webinars

Free-Motion Quilting: Hand Placement



No Gloves

Free-Motion Quilting: Hand Placement



Pinch an Inch

Free-Motion Quilting: Movement

Move hands and quilt in compass directions.

NORTH
SOUTH
EAST
WEST

(Up, Down, Left, Right)



Free-Motion Quilting: Movement

DON'T rotate quilt.

MOVE the quilt
parallel to the
needle, not around
the needle.



Ruler Work: Two-Point Pressure

1. Press against the hopping foot
2. Press down against the quilt
3. NOTE: Ruler is placed against the left side of the hopping foot in this photo



Ruler Work: Placing the Ruler

1. Rulers and templates can also be placed against the back of the hopping foot.
2. Maintain steady pressure against the foot and onto the quilt.



Ruler Work: Placing the Ruler

1. This photo shows the ruler against the RIGHT side of the hopping foot
2. Maintain steady pressure against the foot and onto the quilt.



Ruler Work: Placing the Ruler

1. You are not limited to straight rulers. Try using templates, such as this circle template.
2. It is especially important to use the “compass point” quilting movements with templates. Do not rotate the quilt.
3. Use the ruler to help move the quilt.



Ruler Work: Placing the Ruler

The HQ VersaTool is a good choice for your first ruler/template because it includes both straight lines and curves.



Getting Designs on Quilts



Marking

HQ SWEET
SIXTEEN®

Handi
Quilter
Designed for a Quilter, by a Quilter

2012
Webinars

Getting Designs on Quilts



Fill Stitches

Getting Designs on Quilts

**Photo
printed
on fabric**



 **HQ SWEET
SIXTEEN®**

 **Handi
Quilter**
Designed by a Quilter, for Quilters!

2012
Webinars

Getting Designs on Quilts



Contouring

HQ SWEET
SIXTEEN®

Handi
Quilter
Designed by a Quilter, for Quilters!

2012
Webinars

Getting Designs on Quilts



Foliage

HQ SWEET
SIXTEEN®

Handi
Quilter
Designed by a Quilter, for Quilters!

2012
Webinars

Getting Designs on Quilts



Detail Work

HQ SWEET
SIXTEEN®

Handi
Quilter
Designed by a Quilter, for Quilters!

2012
Webinars

Getting Designs on Quilts



Sky/Landscape

Getting Designs on Quilts



Golden Threads Paper

 **HQ SWEET
SIXTEEN®**

 **Handi
Quilter**
Designed by a Quilter, for Quilters!

2012
Webinars

Getting Designs on Quilts

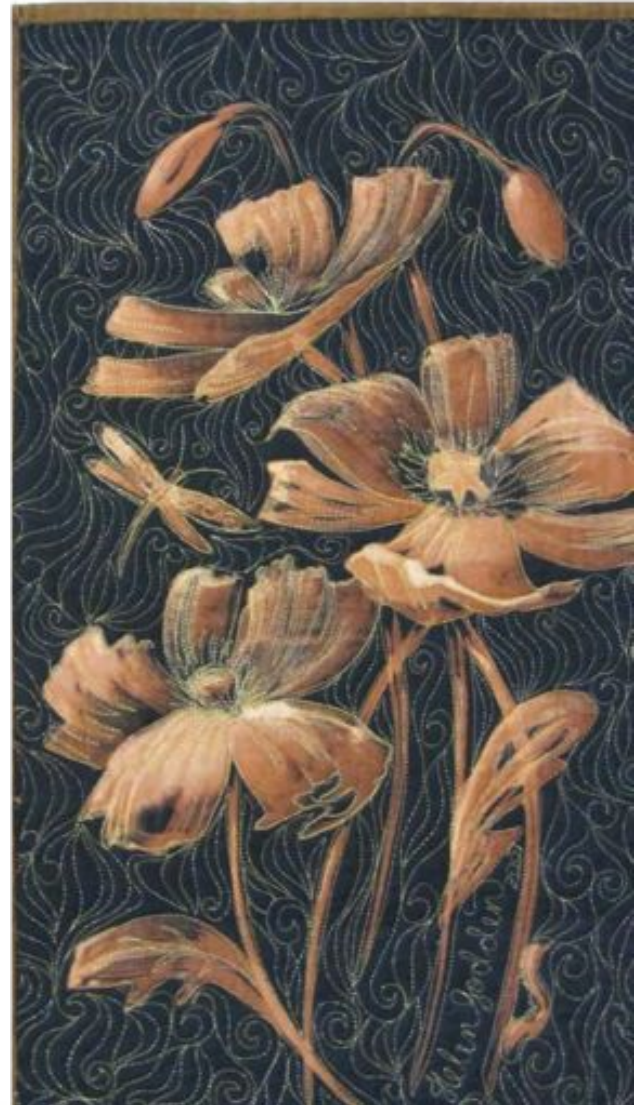


Back Side

Getting Designs on Quilts

Art Panels

Quilt by Helen Godden, discharge technique
Handi Quilter Corporate Collection



HQ SWEET
SIXTEEN®

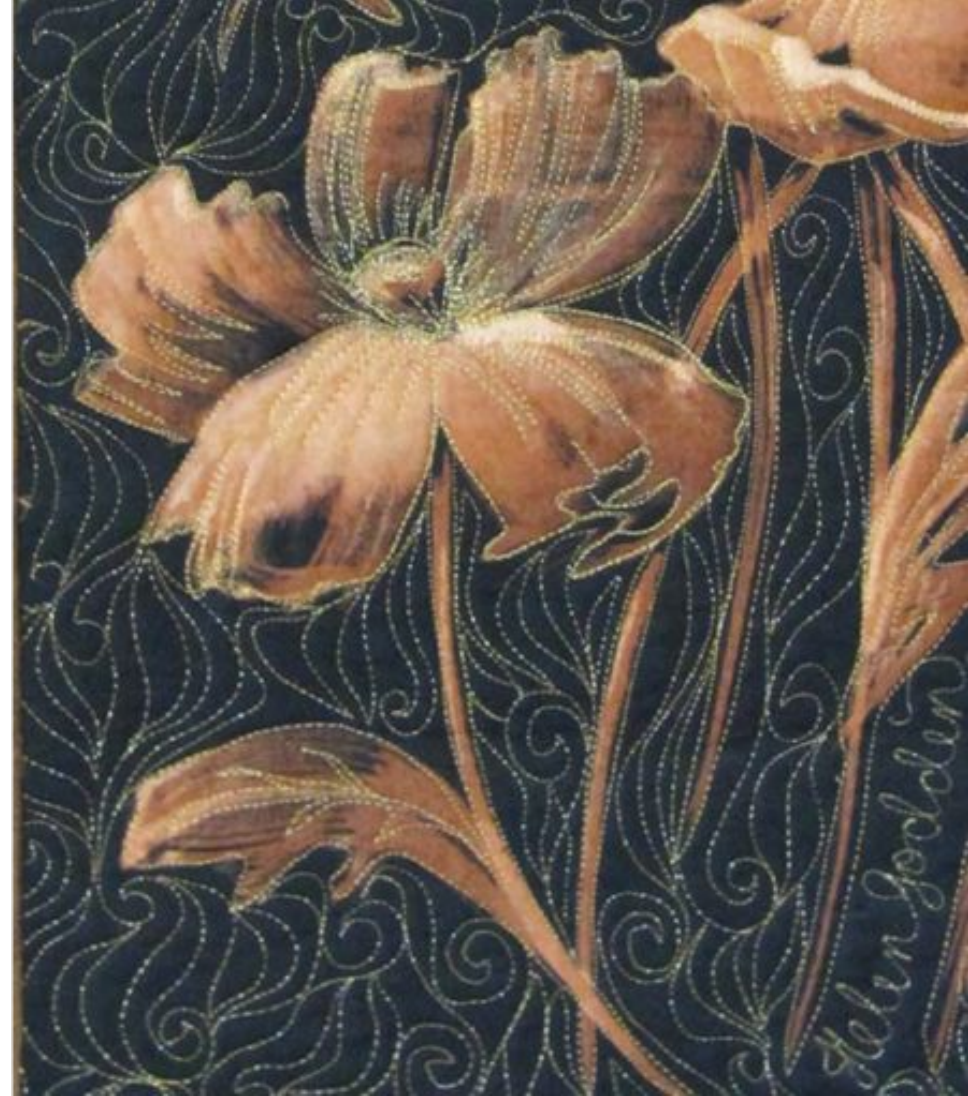
Handi
Quilter
Designed by a Quilter, for Quilters!

2012
Webinars

Getting Designs on Quilts

Detail

Quilt by Helen Godden
Discharge technique
Handi Quilter Corporate Collection



HQ SWEET
SIXTEEN®

Handi
Quilter
Designed by a Quilter, for Quilters

2012
Webinars

Getting Designs on Quilts

Detail

Quilt by Helen
Godden
Discharge
technique
Handi Quilter
Corporate
Collection



HQ SWEET
SIXTEEN®

Handi
Quilter
Designed by a Quilter, for Quilters!

2012
Webinars

Getting Designs on Quilts

Detail

Sample by David Taylor
Free-motion Quilting
Handi Quilter Corporate Collection



HQ SWEET
SIXTEEN®

Handi
Quilter
Designed by a Quilter, for Quilters!

2012
Webinars

Getting Designs on Quilts

Thread Painting

Sample by Ellen Anne Eddy
Free-motion Quilting with Heavy
Threads
Handi Quilter Corporate Collection



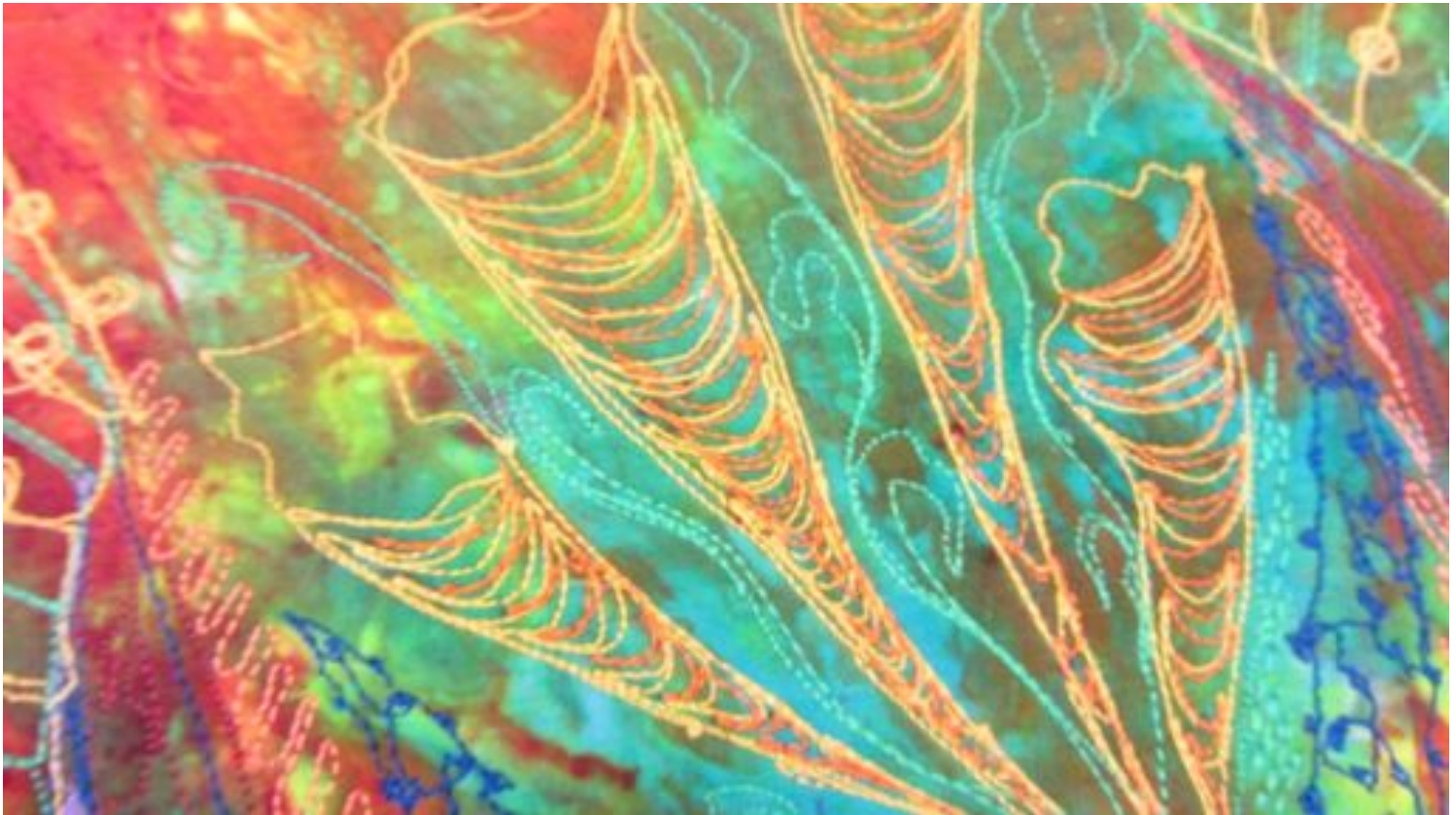
HQ SWEET
SIXTEEN®

Handi
Quilter
Designed by a Quilter, for Quilters!

2012
Webinars

Getting Designs on Quilts

Sample
by
Ellen
Anne
Eddy



Thread Painting Detail

HQ SWEET
SIXTEEN®

Handi
Quilter
Designed by a Quilter, for Quilters!

2012
Webinars

Getting Designs on Quilts

Sample
by
Ellen
Anne
Eddy



Thread Painting Detail

HQ SWEET
SIXTEEN®

Handi
Quilter
Designed by a Quilter, for Quilters!

2012
Webinars

Getting Designs on Quilts

Sample
by
Ellen
Anne
Eddy



Thread Painting Detail

HQ SWEET
SIXTEEN®

Handi
Quilter
Designed by a Quilter, for Quilters!

2012
Webinars

Getting Designs on Quilts

Sample
by
Ellen
Anne
Eddy



Thread Painting

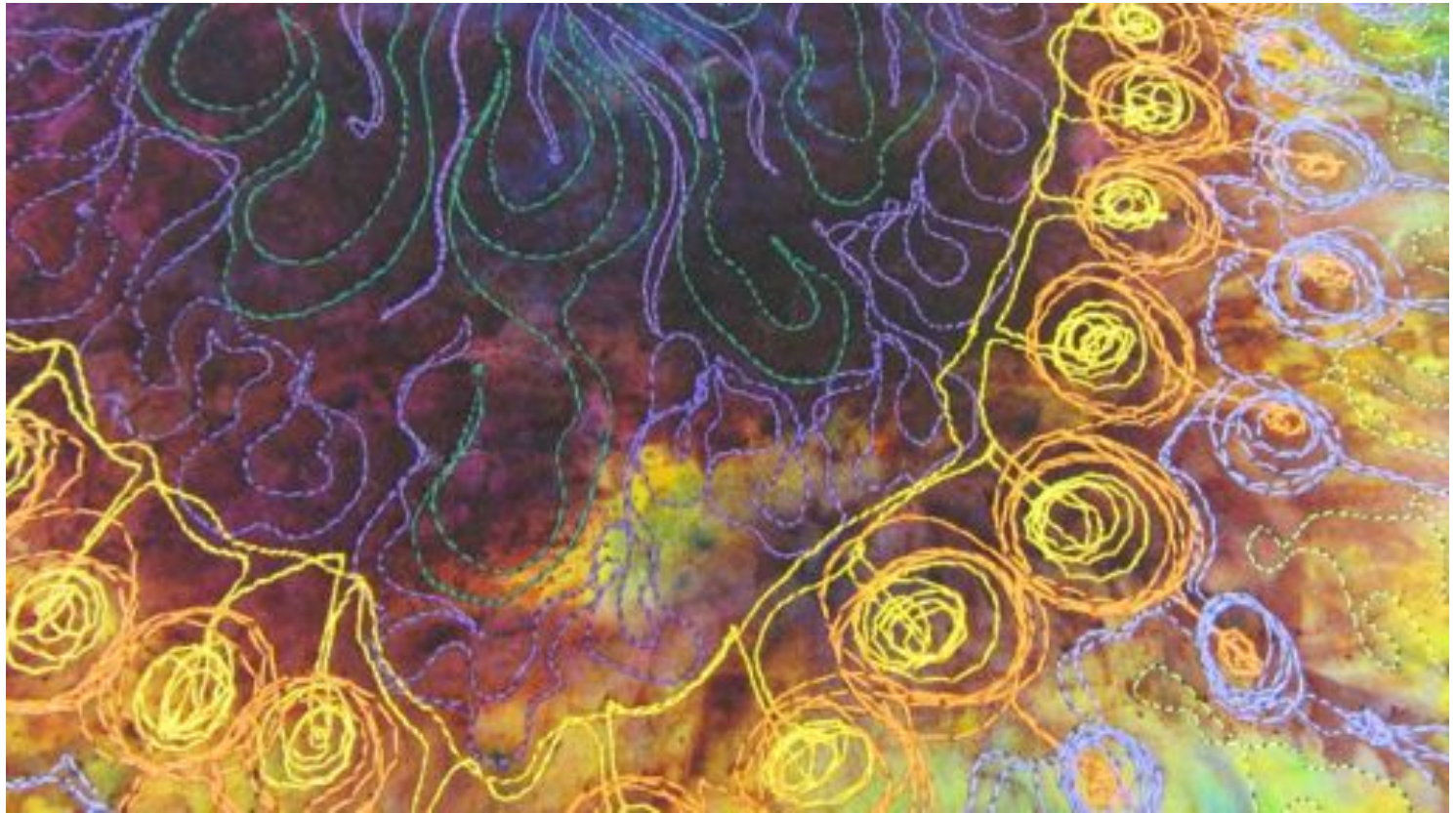
HQ SWEET
SIXTEEN®

Handi
Quilter
Designed by a Quilter, for Quilters!

2012
Webinars

Getting Designs on Quilts

Sample
by
Ellen
Anne
Eddy



Thread Painting Detail

HQ SWEET
SIXTEEN®

Handi
Quilter
Designed by a Quilter, for Quilters!

2012
Webinars

Getting Designs on Quilts

Sample
by
Ellen
Anne
Eddy



Thread Painting Detail

HQ SWEET
SIXTEEN®

Handi
Quilter
Designed by a Quilter, for Quilters!

2012
Webinars

Getting Designs on Quilts

Sample
by
David
Taylor



Echo Quilting

HQ SWEET
SIXTEEN®

Handi
Quilter
Designed by a Quilter, for Quilters

2012
Webinars

Getting Designs on Quilts

Sample
by
David
Taylor



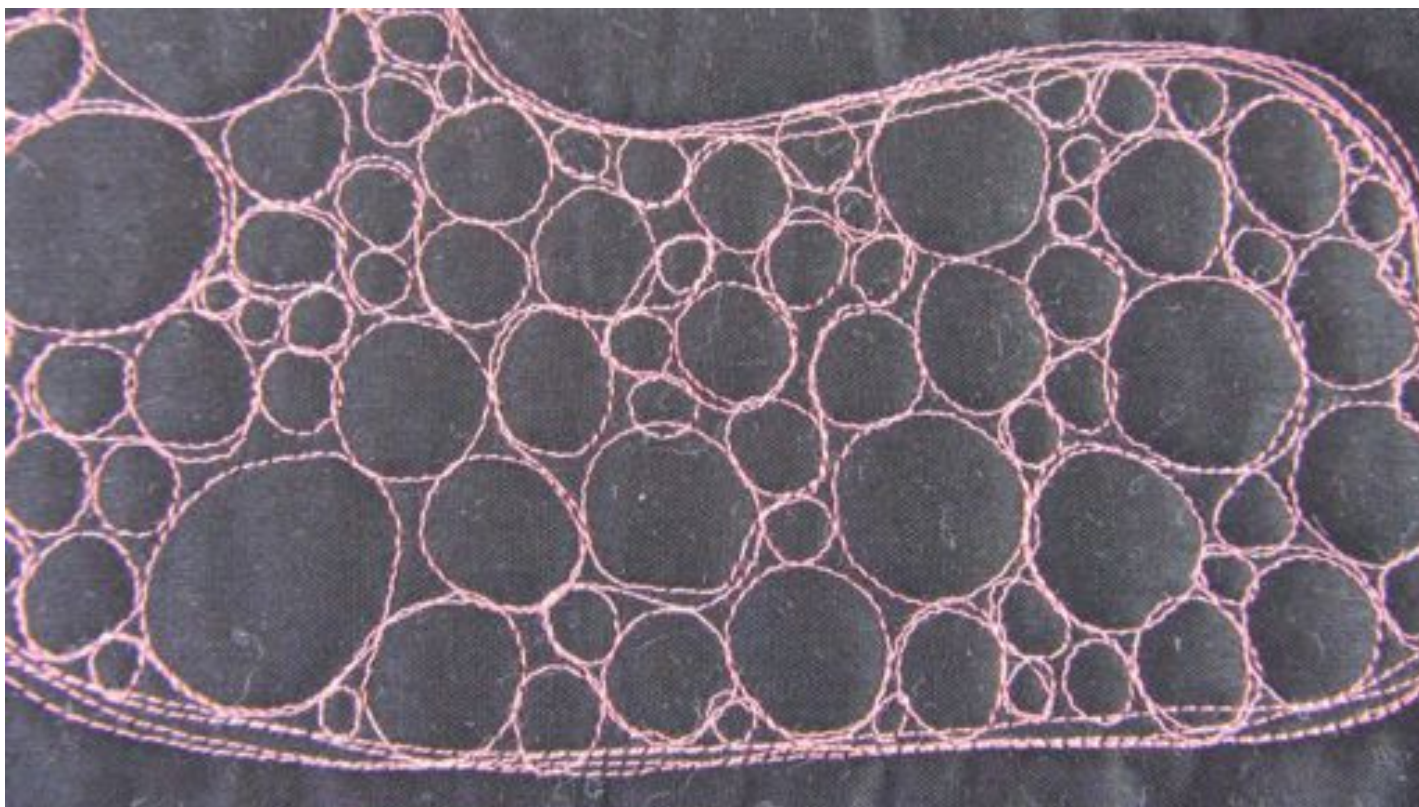
Echo Quilting Detail

HQ SWEET
SIXTEEN®

Handi
Quilter
Designed by a Quilter, for Quilters!

2012
Webinars

Quilting Fill Designs



Pebbles

Quilting Fill Designs

Doodling



HQ SWEET
SIXTEEN®

Handi
Quilter
Designed by a Quilter, for Quilters!

2012
Webinars

Quilting Fill Designs



“McPortering”

*(thanks to Karen McTavish for
her inspiration)*

HQ SWEET
SIXTEEN®

Handi
Quilter
Designed by a Quilter, for Quilters!

2012
Webinars

Quilting Fill Designs

**Curls
'n
Swirls**



 **HQ SWEET
SIXTEEN®**

 **Handi
Quilter**
Designed by a Quilter, for Quilters!

2012
Webinars

Quilting Fill Designs

**Swirly
-cues**



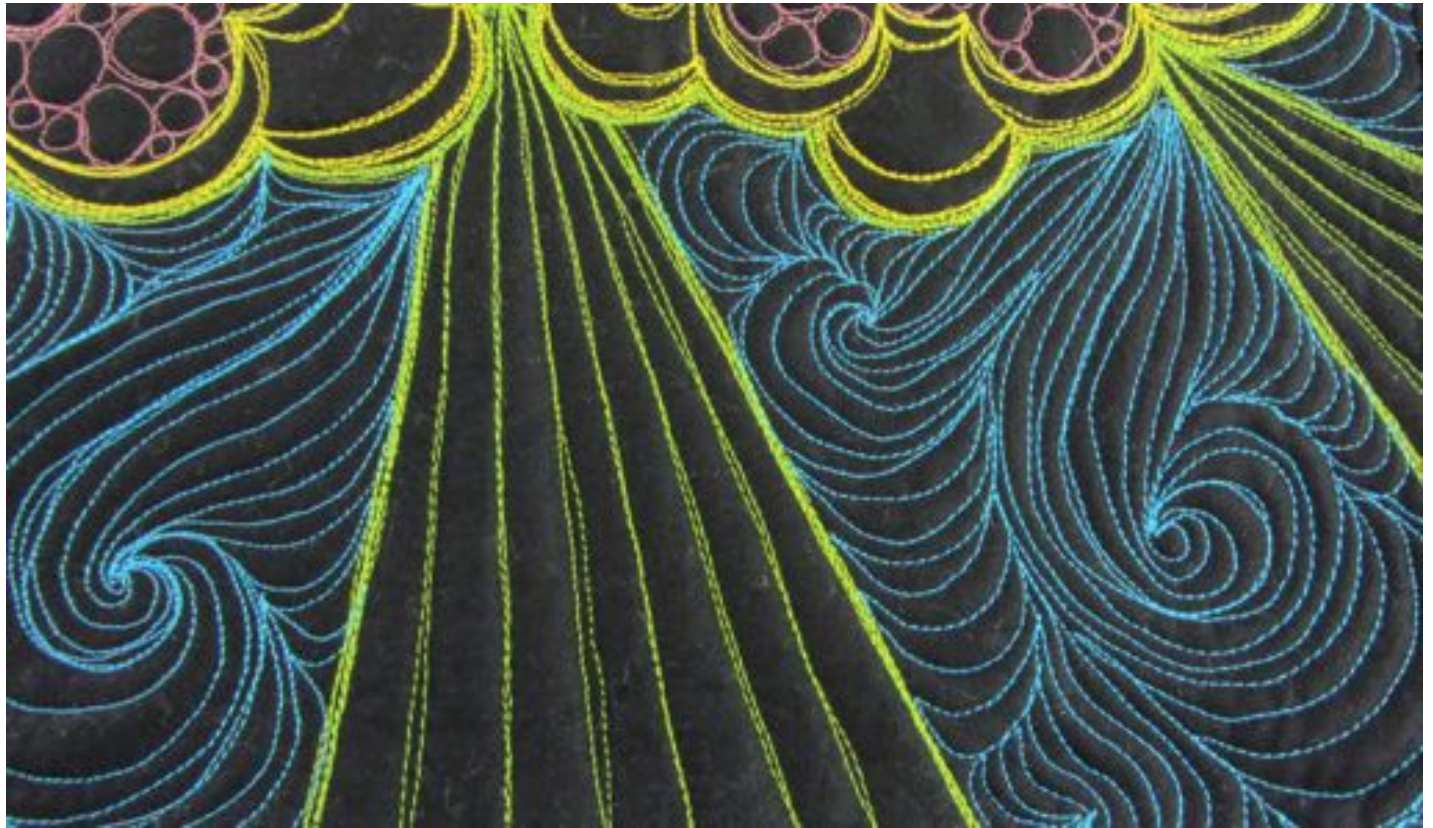
 **HQ SWEET
SIXTEEN®**

 **Handi
Quilter**
Designed by a Quilter, for Quilters!

2012
Webinars

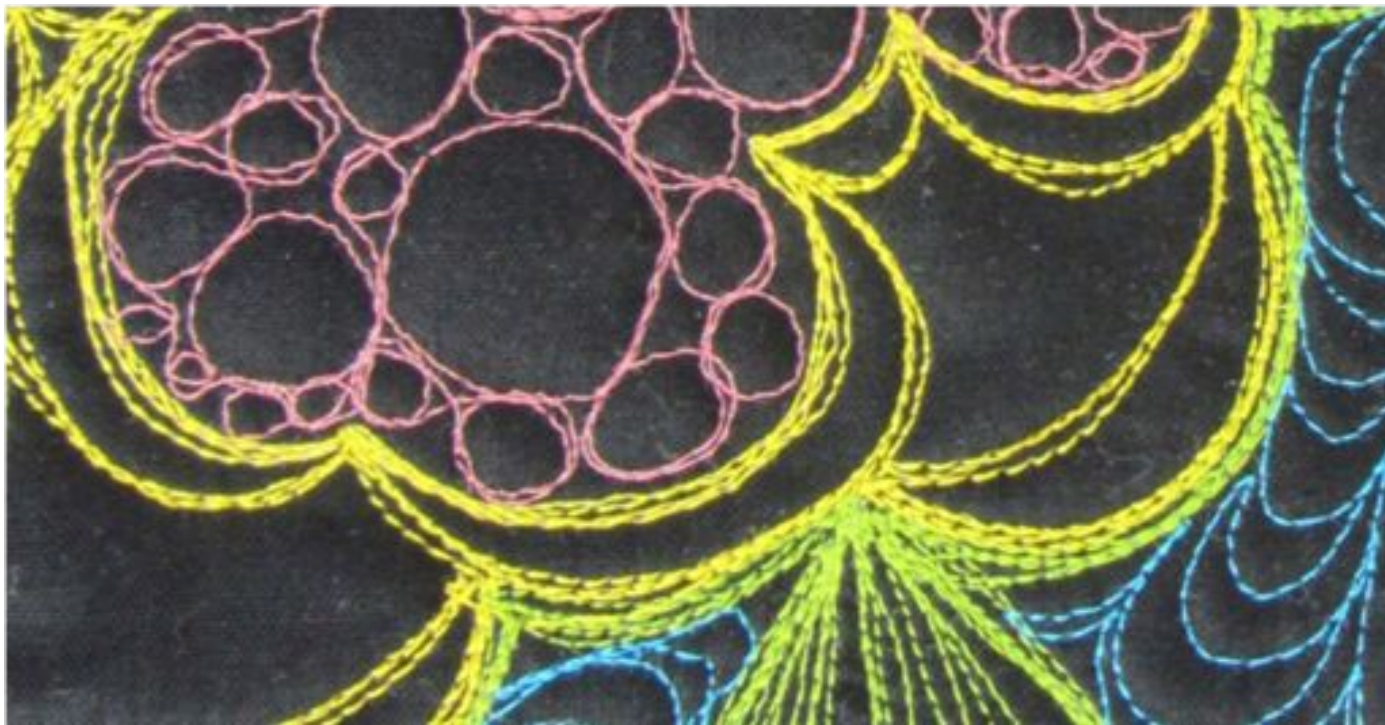
Quilting Fill Designs

Lines



Quilting Fill Designs

Echoes
&
Pebbles



HQ SWEET
SIXTEEN®

Handi
Quilter
Designed by a Quilter, for Quilters!

2012
Webinars

Quilting Fill Designs

The
many
make a
whole



HQ SWEET
SIXTEEN®

Handi
Quilter
Designed by a Quilter, for Quilters!

2012
Webinars

Quilting Wholecloth: Practice

**Start
with
free-
motion
simple,
large
shapes**



Quilting Wholecloth: Practice

Use
micro-
quilting
to fill
between
the
shapes.



Quilting Wholecloth: Practice

**Swirl,
dip, echo
and
break up
the
shapes.**



Quilting Wholecloth: Practice

**Your
practice
piece
becomes
something
beautiful.**



Thanks for joining us today.

Can you remember all of this?

You don't have to. A copy of this webinar will be on the HandiQuilter.com website under the Education tab. Just click on Webinars.

The next Education Webinar will be offered June 14 at 11:00 a.m. Mountain Daylight Time. The topic will be ***Easy Computerized Quilting with the HQ Pro-Stitcher.***

Watch for the next Handi Quilter Newsletter for registration information.



HQ SWEET
SIXTEEN®

Handi
Quilter
Designed by a Quilter, for Quilters!

2012
Webinars

A Special OFFER just for YOU!

25% off any Quilter's Academy
DVDs on HandiQuilter.com

USE this code:

HQSweet

**Offer Expires midnight, MDT, May
11, 2012**

Please Note: The only DVDs that are specifically
HQ Sweet Sixteen-related are David Taylor's.
However, some of the other titles have
information that can be useful for sit-down
quilters, such as the ones about rulers,
continuous line designs or micro-quilting.



 **HQ SWEET
SIXTEEN®**

 **Handi
Quilter**
Designed for a Quilter, by a Quilter

**2012
Webinars**