



PEOPLESOFT ENTERPRISE GLOBAL PAYROLL FOR ARGENTINA 9.0 APPLICATION SUPPLEMENTAL INSTALLATION GUIDE

PeopleSoft Enterprise Global Payroll for Argentina 9.0 Application Supplemental Installation Guide

Copyright © 2009, Oracle. All rights reserved.

The Programs (which include both the software and documentation) contain proprietary information; they are provided under a license agreement containing restrictions on use and disclosure and are also protected by copyright, patent, and other intellectual and industrial property laws. Reverse engineering, disassembly, or decompilation of the Programs, except to the extent required to obtain interoperability with other independently created software or as specified by law, is prohibited.

The information contained in this document is subject to change without notice. If you find any problems in the documentation, please report them to us in writing. This document is not warranted to be error-free. Except as may be expressly permitted in your license agreement for these Programs, no part of these Programs may be reproduced or transmitted in any form or by any means, electronic or mechanical, for any purpose.

If the Programs are delivered to the United States Government or anyone licensing or using the Programs on behalf of the United States Government, the following notice is applicable:

U.S. GOVERNMENT RIGHTS

Programs, software, databases, and related documentation and technical data delivered to U.S. Government customers are "commercial computer software" or "commercial technical data" pursuant to the applicable Federal Acquisition Regulation and agency-specific supplemental regulations. As such, use, duplication, disclosure, modification, and adaptation of the Programs, including documentation and technical data, shall be subject to the licensing restrictions set forth in the applicable Oracle license agreement, and, to the extent applicable, the additional rights set forth in FAR 52.227-19, Commercial Computer Software--Restricted Rights (June 1987). Oracle Corporation, 500 Oracle Parkway, Redwood City, CA 94065.

The Programs are not intended for use in any nuclear, aviation, mass transit, medical, or other inherently dangerous applications. It shall be the licensee's responsibility to take all appropriate fail-safe, backup, redundancy and other measures to ensure the safe use of such applications if the Programs are used for such purposes, and we disclaim liability for any damages caused by such use of the Programs.

The Programs may provide links to Web sites and access to content, products, and services from third parties. Oracle is not responsible for the availability of, or any content provided on, third-party Web sites. You bear all risks associated with the use of such content. If you choose to purchase any products or services from a third party, the relationship is directly between you and the third party. Oracle is not responsible for: (a) the quality of third-party products or services; or (b) fulfilling any of the terms of the agreement with the third party, including delivery of products or services and warranty obligations related to purchased products or services. Oracle is not responsible for any loss or damage of any sort that you may incur from dealing with any third party.

Oracle is a registered trademark of Oracle Corporation and/or its affiliates. Other names may be trademarks of their respective owners.

Open Source Disclosure

Oracle takes no responsibility for its use or distribution of any open source or shareware software or documentation and disclaims any and all liability or damages resulting from use of said software or documentation. The following open source software may be used in Oracle's PeopleSoft products and the following disclaimers are provided.

Apache Software Foundation

This product includes software developed by the Apache Software Foundation (<http://www.apache.org/>). Copyright (C) 2000-2003. The Apache Software Foundation. All rights reserved. Licensed under the Apache License, Version 2.0 (the "License"); you may not use this file except in compliance with the License. You may obtain a copy of the License at <http://www.apache.org/licenses/LICENSE-2.0>.

Unless required by applicable law or agreed to in writing, software distributed under the License is distributed on an "AS IS" BASIS, WITHOUT WARRANTIES OR CONDITIONS OF ANY KIND, either express or implied. See the License for the specific language governing permissions and limitations under the License.

OpenSSL

Copyright 1998-2005 The OpenSSL Project. All rights reserved.

This product includes software developed by the OpenSSL Project for use in the OpenSSL Toolkit (<http://www.openssl.org/>).

THIS SOFTWARE IS PROVIDED BY THE OpenSSL PROJECT "AS IS" AND ANY EXPRESSED OR IMPLIED WARRANTIES, INCLUDING, BUT NOT LIMITED TO, THE IMPLIED WARRANTIES OF MERCHANTABILITY AND FITNESS FOR A PARTICULAR PURPOSE ARE DISCLAIMED. IN NO EVENT SHALL THE OpenSSL PROJECT OR ITS CONTRIBUTORS BE LIABLE FOR ANY DIRECT, INDIRECT, INCIDENTAL, SPECIAL, EXEMPLARY, OR CONSEQUENTIAL DAMAGES (INCLUDING, BUT NOT LIMITED TO, PROCUREMENT OF SUBSTITUTE GOODS OR SERVICES; LOSS OF USE, DATA, OR PROFITS; OR BUSINESS INTERRUPTION) HOWEVER CAUSED AND ON ANY THEORY OF LIABILITY, WHETHER IN CONTRACT, STRICT LIABILITY, OR TORT (INCLUDING NEGLIGENCE OR OTHERWISE) ARISING IN ANY WAY OUT OF THE USE OF THIS SOFTWARE, EVEN IF ADVISED OF THE POSSIBILITY OF SUCH DAMAGE.

Helma Project

Copyright 1999-2004 Helma Project. All rights reserved. THIS SOFTWARE IS PROVIDED "AS IS" AND ANY

EXPRESSED OR IMPLIED WARRANTIES, INCLUDING, BUT NOT LIMITED TO, THE IMPLIED WARRANTIES OF MERCHANTABILITY AND FITNESS FOR A PARTICULAR PURPOSE ARE DISCLAIMED. IN NO EVENT SHALL THE HELMA PROJECT OR ITS CONTRIBUTORS BE LIABLE FOR ANY DIRECT, INDIRECT, INCIDENTAL, SPECIAL, EXEMPLARY, OR CONSEQUENTIAL DAMAGES (INCLUDING, BUT NOT LIMITED TO, PROCUREMENT OF SUBSTITUTE GOODS OR SERVICES; LOSS OF USE, DATA, OR PROFITS; OR BUSINESS INTERRUPTION) HOWEVER CAUSED AND ON ANY THEORY OF LIABILITY, WHETHER IN CONTRACT, STRICT LIABILITY, OR TORT (INCLUDING NEGLIGENCE OR OTHERWISE) ARISING IN ANY WAY OUT OF THE USE OF THIS SOFTWARE, EVEN IF ADVISED OF THE POSSIBILITY OF SUCH DAMAGE.

Helma includes third party software released under different specific license terms. See the licenses directory in the Helma distribution for a list of these licenses.

Sarissa

Copyright 2004 Manos Batsis

This library is free software; you can redistribute it and/or modify it under the terms of the GNU Lesser General Public License as published by the Free Software Foundation; either version 2.1 of the License, or (at your option) any later version.

This library is distributed in the hope that it will be useful, but WITHOUT ANY WARRANTY; without even the implied warranty of MERCHANTABILITY or FITNESS FOR A PARTICULAR PURPOSE. See the GNU Lesser General Public License for more details.

You should have received a copy of the GNU Lesser General Public License along with this library; if not, write to the Free Software Foundation, Inc., 59 Temple Place, Suite 330, Boston, MA 02111-1307 USA.

ICU

ICU License - ICU 1.8.1 and later COPYRIGHT AND PERMISSION NOTICE Copyright (c) 1995-2003 International Business Machines Corporation and others. All rights reserved.

Permission is hereby granted, free of charge, to any person obtaining a copy of this software and associated documentation files (the "Software"), to deal in the Software without restriction, including without limitation the rights to use, copy, modify, merge, publish, distribute, and/or sell copies of the Software, and to permit persons to whom the Software is furnished to do so, provided that the above copyright notice(s) and this permission notice appear in all copies of the Software and that both the above copyright notice(s) and this permission notice appear in supporting documentation. THE SOFTWARE IS PROVIDED "AS IS," WITHOUT WARRANTY OF ANY KIND, EXPRESS OR IMPLIED, INCLUDING BUT NOT LIMITED TO THE WARRANTIES OF MERCHANTABILITY, FITNESS FOR A PARTICULAR PURPOSE AND NONINFRINGEMENT OF THIRD PARTY RIGHTS. IN NO EVENT SHALL THE COPYRIGHT HOLDER OR HOLDERS INCLUDED IN THIS NOTICE BE LIABLE FOR ANY CLAIM, OR ANY SPECIAL INDIRECT OR CONSEQUENTIAL DAMAGES, OR ANY DAMAGES WHATSOEVER RESULTING FROM LOSS OF USE, DATA OR PROFITS, WHETHER IN AN ACTION OF CONTRACT, NEGLIGENCE OR OTHER TORTIOUS ACTION, ARISING OUT OF OR IN CONNECTION WITH THE USE OR PERFORMANCE OF THIS SOFTWARE. Except as contained in this notice, the name of a copyright holder shall not be used in advertising or otherwise to promote the sale, use or other dealings in this Software without prior written authorization of the copyright holder.

All trademarks and registered trademarks mentioned herein are the property of their respective owners.

Sun's JAXB Implementation – JSDK 1.5 relaxngDatatype.jar 1.0 License:

Copyright (c) 2001, Argentina Open Source Software Center Ltd, Sun Microsystems. All rights reserved.

THIS SOFTWARE IS PROVIDED BY THE COPYRIGHT HOLDERS AND CONTRIBUTORS "AS IS" AND ANY EXPRESS OR IMPLIED WARRANTIES, INCLUDING, BUT NOT LIMITED TO, THE IMPLIED WARRANTIES OF MERCHANTABILITY AND FITNESS FOR A PARTICULAR PURPOSE ARE DISCLAIMED. IN NO EVENT SHALL THE REGENTS OR CONTRIBUTORS BE LIABLE FOR ANY DIRECT, INDIRECT, INCIDENTAL, SPECIAL, EXEMPLARY, OR CONSEQUENTIAL DAMAGES (INCLUDING, BUT NOT LIMITED TO, PROCUREMENT OF SUBSTITUTE GOODS OR SERVICES; LOSS OF USE, DATA, OR PROFITS; OR BUSINESS INTERRUPTION) HOWEVER CAUSED AND ON ANY THEORY OF LIABILITY, WHETHER IN CONTRACT, STRICT LIABILITY, OR TORT (INCLUDING NEGLIGENCE OR OTHERWISE) ARISING IN ANY WAY OUT OF THE USE OF THIS SOFTWARE, EVEN IF ADVISED OF THE POSSIBILITY OF SUCH DAMAGE.

W3C IPR SOFTWARE NOTICE

Copyright © 2000 World Wide Web Consortium, (Massachusetts Institute of Technology, Institut National de Recherche en Informatique et en Automatique, Keio University). All Rights Reserved.

Note: The original version of the W3C Software Copyright Notice and License could be found at <http://www.w3.org/Consortium/Legal/copyright-software-19980720>

THIS SOFTWARE AND DOCUMENTATION IS PROVIDED "AS IS," AND COPYRIGHT HOLDERS MAKE NO REPRESENTATIONS OR WARRANTIES, EXPRESS OR IMPLIED, INCLUDING BUT NOT LIMITED TO, WARRANTIES OF MERCHANTABILITY OR FITNESS FOR ANY PARTICULAR PURPOSE OR THAT THE USE OF THE SOFTWARE OR DOCUMENTATION WILL NOT INFRINGE ANY THIRD PARTY PATENTS, COPYRIGHTS, TRADEMARKS OR OTHER RIGHTS. COPYRIGHT HOLDERS WILL NOT BE LIABLE FOR ANY DIRECT, INDIRECT, SPECIAL OR CONSEQUENTIAL DAMAGES ARISING OUT OF ANY USE OF THE SOFTWARE OR DOCUMENTATION.

CONTENTS

Preface

About This Documentation.....	1
Audience	1
Installing the PeopleSoft HRMS Global Payroll for Argentina 9.0 Application.....	2
Pre-Installation Considerations.....	2
PeopleSoft PeopleTools Version.....	2
PeopleSoft HRMS Application Version.....	2
Installation Task Overview.....	3
Task 1-1 Installing the PeopleSoft Global Payroll for Argentina 9.0 Product from the CD.....	3
Task 1-2 Installing the PeopleSoft Global Payroll for Argentina Product, Multilingual Portion	10
Task 1-3 Enabling the Argentina Language Flag (Spanish)	16
Task 1-4 Copying the GP Argentina Project to the PeopleSoft HRMS Database	17
Task 1-5 Building the AR900 Project.....	17
Task 1-6 Installing Additional Database Changes Using PeopleSoft Data Mover	18
Task 1-7 Validating the Project Integrity	19
Task 1-8 Copying the GP Argentina Multilingual Project into the HRMS 9.0 Database.....	20
Task 1-9 Adjusting Versions and Running Audit Reports on PeopleSoft HRMS 9 Database....	20
Task 1-10 Granting Security to GP Argentina Objects.....	21
Task 1-11 Setting Installation Options.....	21
Task 1-12 Installing the PeopleSoft Global Payroll for Argentina Extensions.....	22
Installing the ARRUL Rule Package.....	23
Installing the ARSYS Non-Rule Package Elements and Records.....	24
Installing the ARDMO Non-Rule Package Elements and Records.....	25
Task 1-13 Installing the Global Payroll for Argentina Extensions, Multilingual Portion.....	26
Installing the ARRULESP Translation Rule Package.....	27
Installing the ARSYSESP Translation Non-Rule Package Elements and Records.....	29

P R E F A C E

ABOUT THIS DOCUMENTATION

This chapter provides pre-installation considerations and installation notes and instructions specific to the PeopleSoft Enterprise Global Payroll for Argentina application. Installation notes are tips about a specific issue in a product whereas installation instructions are step-by-step instructions on how to install the PeopleSoft Global Payroll for Argentina product.

Important! This documentation is not a standalone installation guide. It does not contain installation instructions for PeopleSoft Enterprise PeopleTools or PeopleSoft Enterprise HRMS. When installing PeopleSoft Global Payroll for Argentina, be sure to use the PeopleSoft PeopleTools Installation Guide, the PeopleSoft HRMS Installation Guide for your database platform, and this supplemental PeopleSoft Global Payroll for Argentina installation guide. The PeopleSoft PeopleTools Installation Guide and PeopleSoft HRMS Installation Guide are available on Oracle's PeopleSoft MetaLink 3 website.

Audience

This book is written for the individuals responsible for installing and administering the PeopleSoft environment. Oracle assumes that you are familiar with your operating environment and RDBMS and that you have the necessary skills to support that environment. You should also have a working knowledge of SQL. Oracle recommends that you complete at least one introductory PeopleSoft training course (particularly the Server Administration and Installation course) and have a basic understanding of the PeopleSoft system. The most important component in the installation and maintenance of your PeopleSoft system is your onsite expertise. Only qualified and experienced individuals should attempt to install PeopleSoft applications and products. If you have any doubts as to whether your onsite staff is capable of successfully completing an installation, contact your PeopleSoft representative.

INSTALLING THE PEOPLESOFT HRMS GLOBAL PAYROLL FOR ARGENTINA 9.0 APPLICATION

Pre-Installation Considerations

Consider the following before you install PeopleSoft Global Payroll for Argentina 9.0.

PeopleSoft PeopleTools Version

To run PeopleSoft Global Payroll for Argentina 9.0, you must be using PeopleSoft PeopleTools 8.49.11b or higher.

PeopleSoft HRMS Application Version

To run PeopleSoft Global Payroll for Argentina 9.0, you must be using PeopleSoft HRMS 9.0 MP6. If you are installing languages other than English, you need to install the multilingual version of MP6.

In addition to MP6 (or the multilingual version), you must also add the following resolutions in the specified order:

Note: If you are performing a multilingual installation, make sure you obtain the multilingual versions if they exist.

1. UPD765565—HRMS 9.0 Bundle #8.
2. UPD734686—Global Payroll 9.0 Bundle #8.
3. UPD780842—Human Resources features specific to Argentina.
4. UPD782490—Modified the Identification of available Telework positions and participating employees to support telecommuting requirements.
5. UPD784712—HR ARG: Add Argentina to the version-based Rule Packages.
6. UPD779965—EO Address: New address components for Argentina.

Installation Task Overview

The following table summarizes the tasks in this chapter:

Task No.	Task Name
Task 1-1	Installing the PeopleSoft Global Payroll for Argentina 9.0 Product from the CD
Task 1-2	Installing the PeopleSoft Global Payroll for Argentina Product, Multilingual Portion
Task 1-3	Enabling the Argentina Language Flag (Spanish)
Task 1-4	Copying the PeopleSoft GP Argentina Project to the PeopleSoft HRMS 9.0 Database
Task 1-5	Building the AR900 Project
Task 1-6	Installing Additional Database Changes Using PeopleSoft Data Mover
Task 1-7	Validating the Project Integrity
Task 1-8	Copying the GP Argentina Multilingual Project into the HRMS Database
Task 1-9	Adjusting Versions and Running Audit Reports on PeopleSoft HRMS 9.0 Database
Task 1-10	Granting Security to GP Argentina Objects
Task 1-11	Setting Installation Options
Task 1-12	Installing PeopleSoft Global Payroll for Argentina Extensions
Task 1-13	Installing PeopleSoft Global Payroll for Argentina Extensions, Multilingual Portion

Note. Before you begin the installation process, run audit reports to ensure that your target databases are clean.

Task 1-1 Installing the PeopleSoft Global Payroll for Argentina 9.0 Product from the CD

These additional steps walk you through how to load the Country Extension-specific data.

To install the PeopleSoft Global Payroll for Argentina 9.0 product:

1. Run SETUP.EXE from the PeopleSoft Global Payroll for Argentina CD.

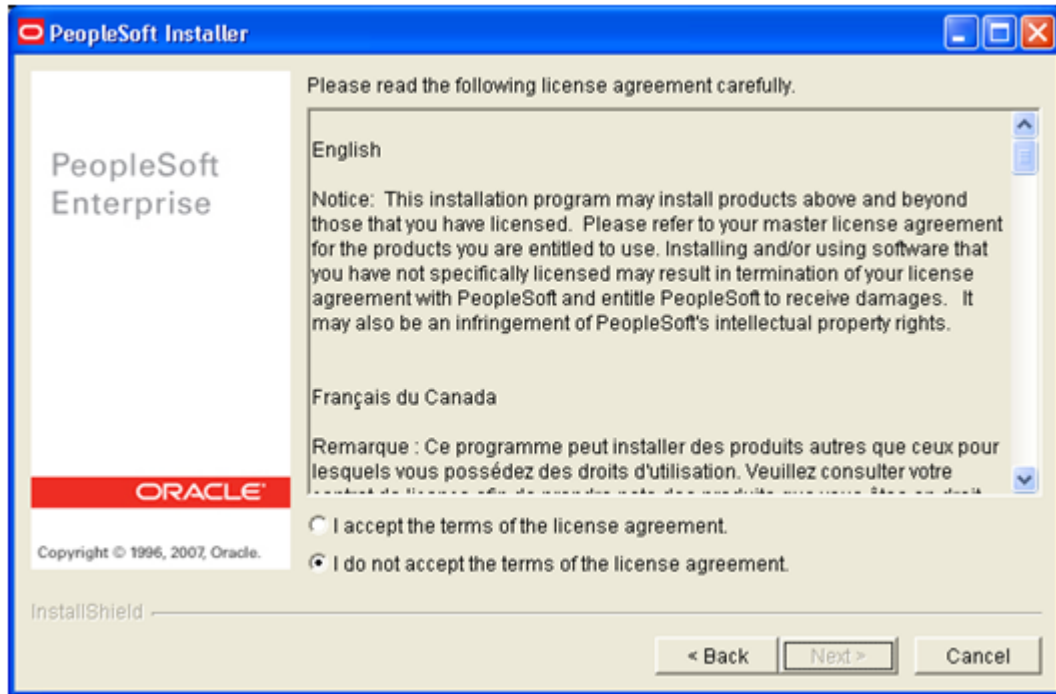
If prompted, enter the product license code that is contained in the product letter that you received with the PeopleSoft Global Payroll for Argentina CD. The PeopleSoft Installer Welcome page appears.



PeopleSoft Installer - Welcome page

2. Click **Next**.

The PeopleSoft Installer license agreement page appears.



PeopleSoft Installer - License Agreement page

3. Read the License Agreement carefully and select an option.
4. Click **Next**.

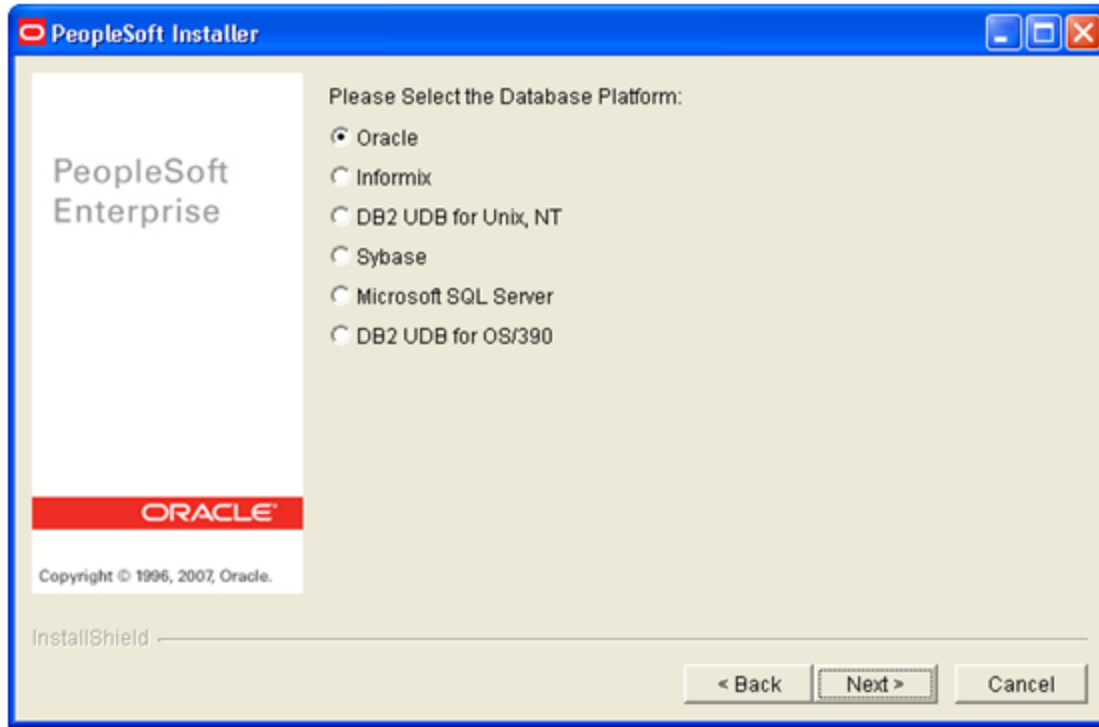
The PeopleSoft Installer license code page appears.



PeopleSoft Installer - License Code page

5. In the License Code field, enter your PeopleSoft license code.
6. Click **Next**.

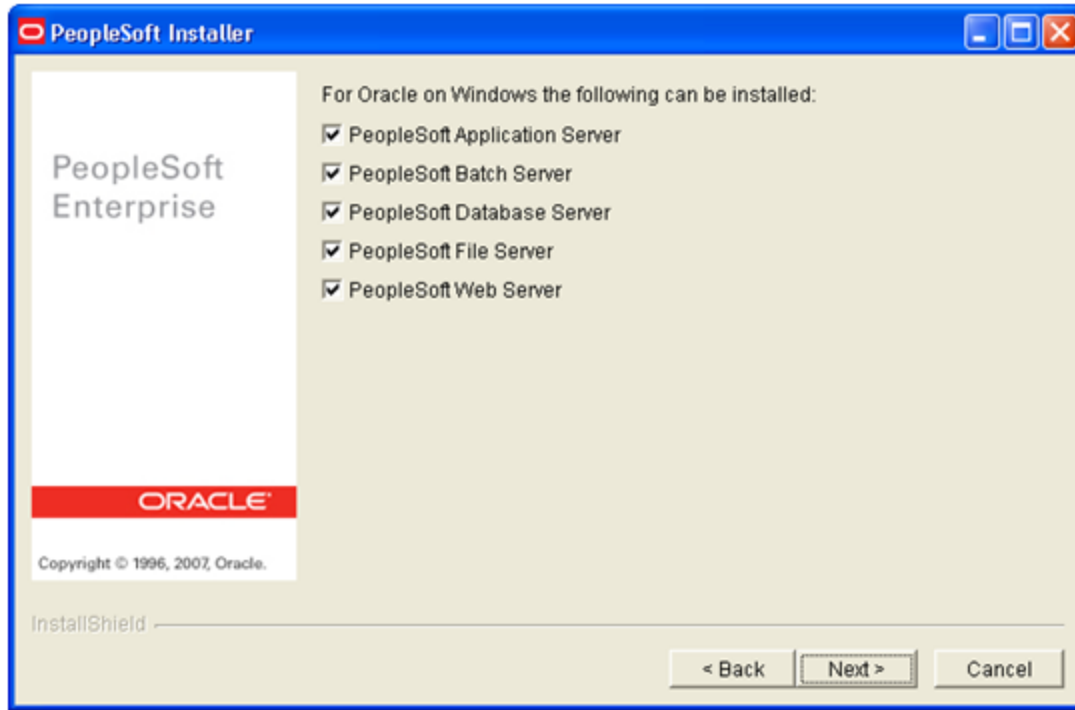
The PeopleSoft Installer database platform option page appears.



[PeopleSoft Installer - Database platform install option page](#)

7. Select the database install option that is based on your existing PeopleSoft HRMS 9.0 installation.
8. Click **Next**.

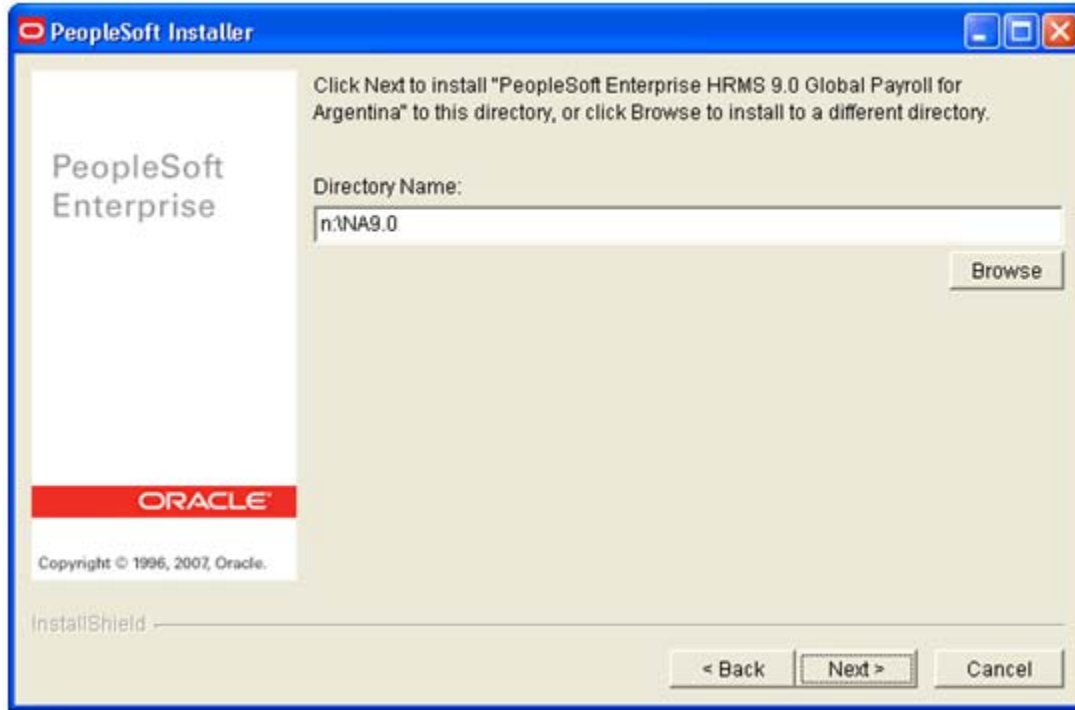
The PeopleSoft Installer Oracle on Windows server option page appears.



PeopleSoft Installer - Oracle on Windows server option page

9. Select the PeopleSoft component that you want to install.
10. Click **Next**.

The PeopleSoft Installer directory selection page appears.



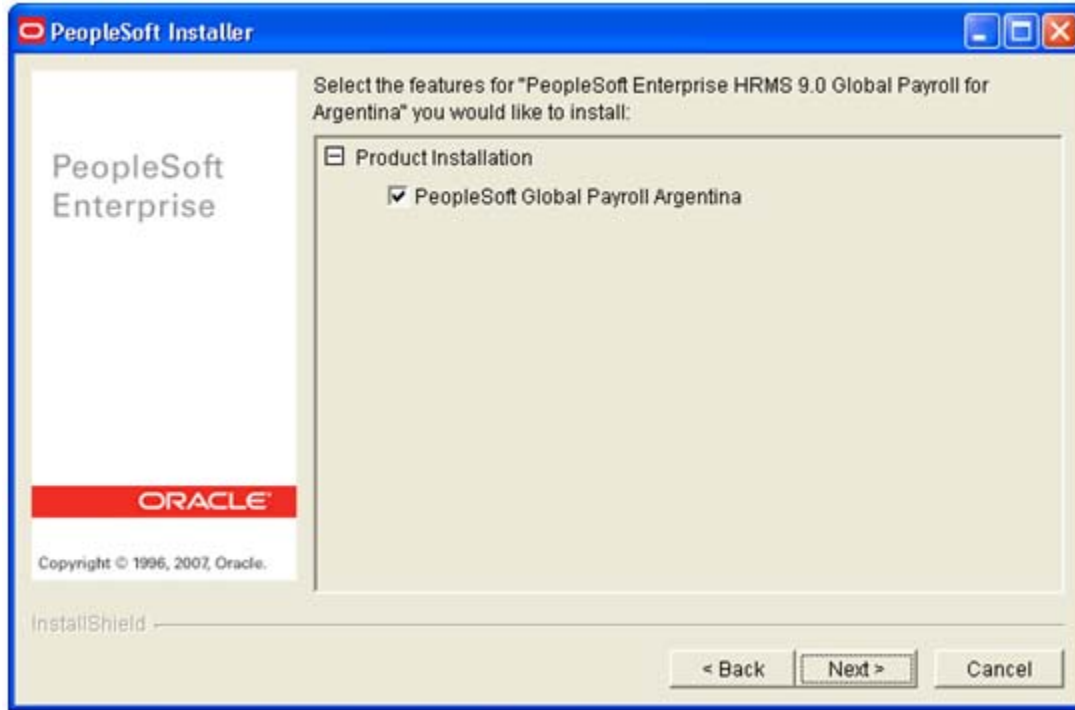
PeopleSoft Installer - Directory Name selection page

11. Specify the directory in which you want to install the application.

The directory that you select should be the one in which you installed PeopleSoft Enterprise HRMS 9.0. If you need to change the drive letter or directory name, click Browse.

12. Click **Next**.

The PeopleSoft Installer available product selection page appears.



PeopleSoft Installer - Select the features page

13. Select the **PeopleSoft Global Payroll Argentina** check box if it is not already selected.

Note. The PeopleSoft Setup program displays only the application that you license. If the application does not appear, it is possible that you made an error while entering the product license code during the CD-ROM installation. If the product is missing, restart the SETUP.EXE from the PeopleSoft CD-ROM and verify the license code.

14. After selecting the product, click **Next**.

Confirm your selection. If the incorrect directory appears, click **Back** to return to the main page where you can specify the correct installation directory.

15. Click **Next**.

The set up program begins to install the files that are associated with the products that you selected.

If you need to cancel the installation process, click Cancel or press the Esc key.

Note. This documentation does not provide detailed information about the installation of application projects. For more information and details, see the PeopleSoft PeopleTools documentation.

Task 1-2 Installing the PeopleSoft Global Payroll for Argentina Product, Multilingual Portion

To install the Global Payroll for Argentina 9.0 Multilingual portion:

Note. Perform this task only if you are using the Spanish language.

1. Run SETUP.EXE from the Global Payroll for Argentina Multilingual CD.

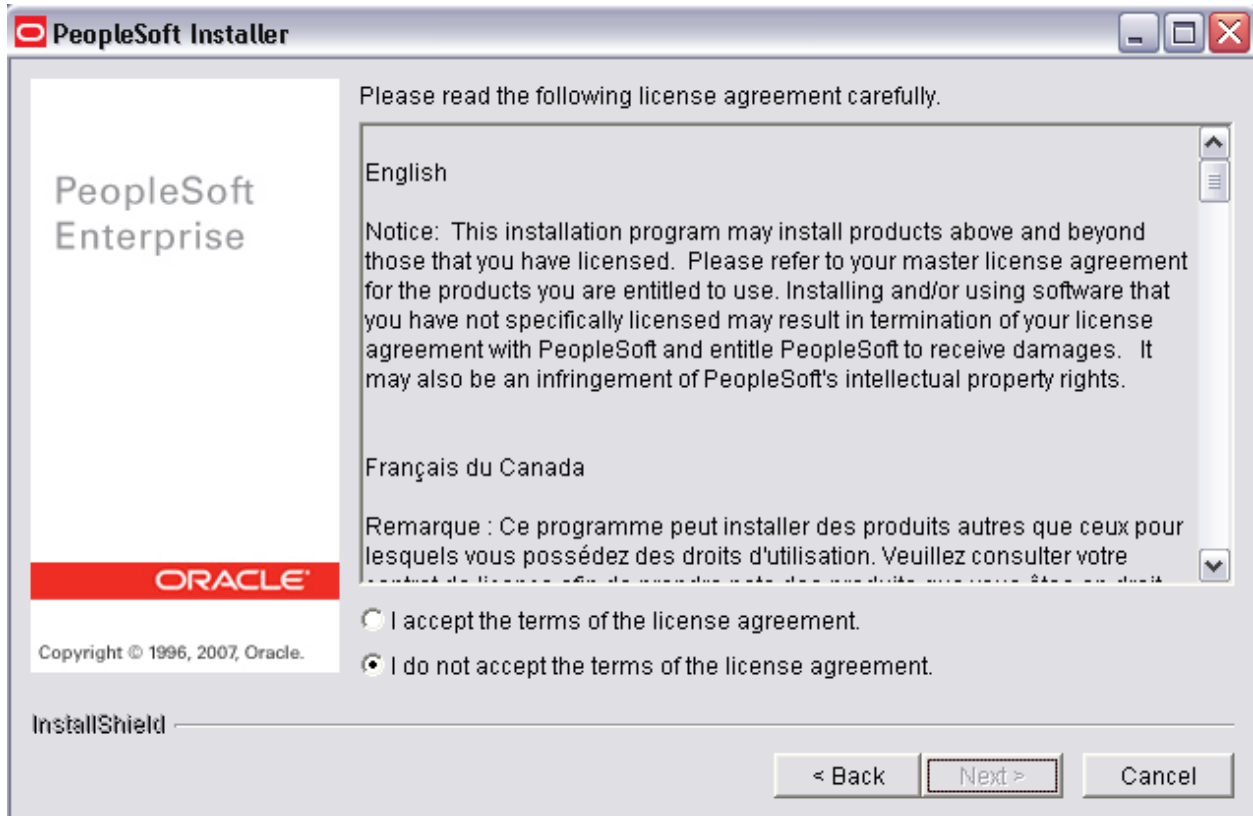
The PeopleSoft Installer Welcome page appears.



PeopleSoft Installer – Welcome page

2. Click **Next**.

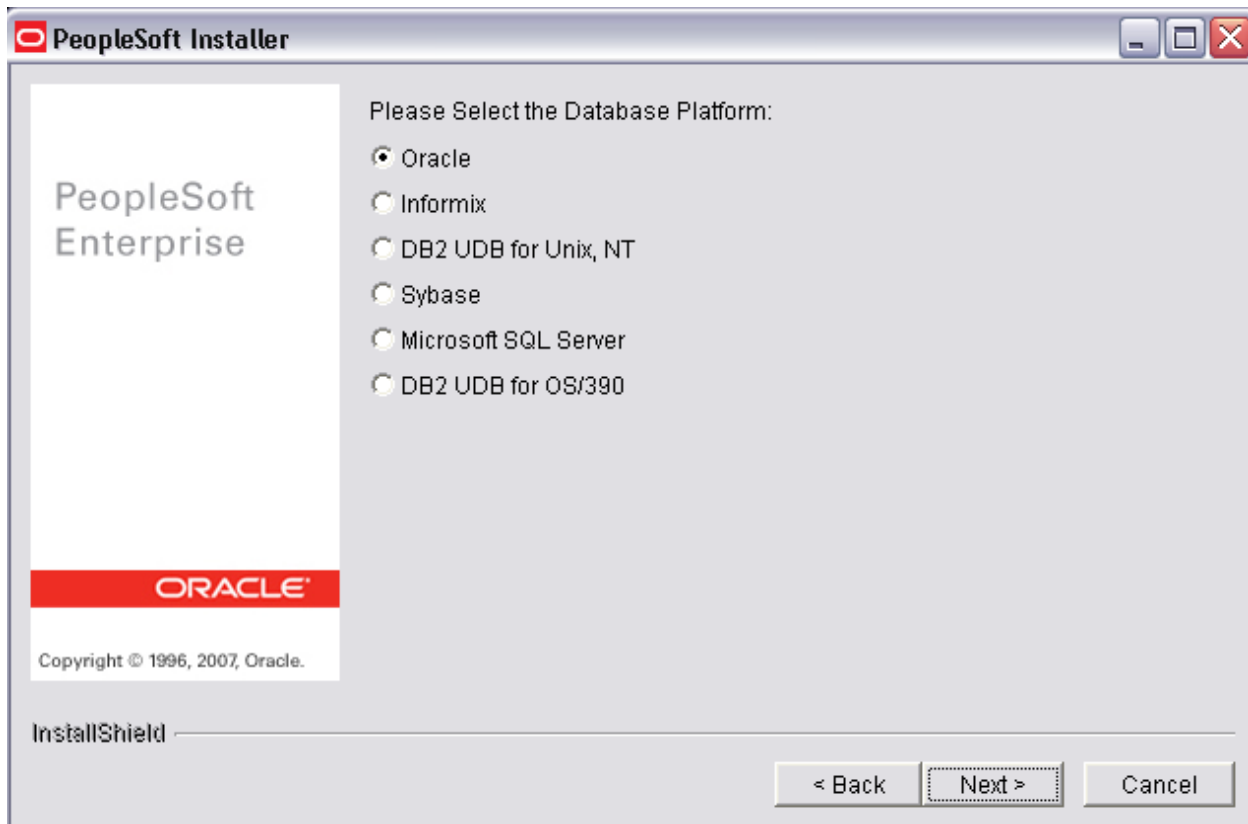
The PeopleSoft Installer license agreement page appears.



[PeopleSoft Installer – License Agreement page](#)

3. Read the License Agreement carefully and select an option.
4. Click **Next**.

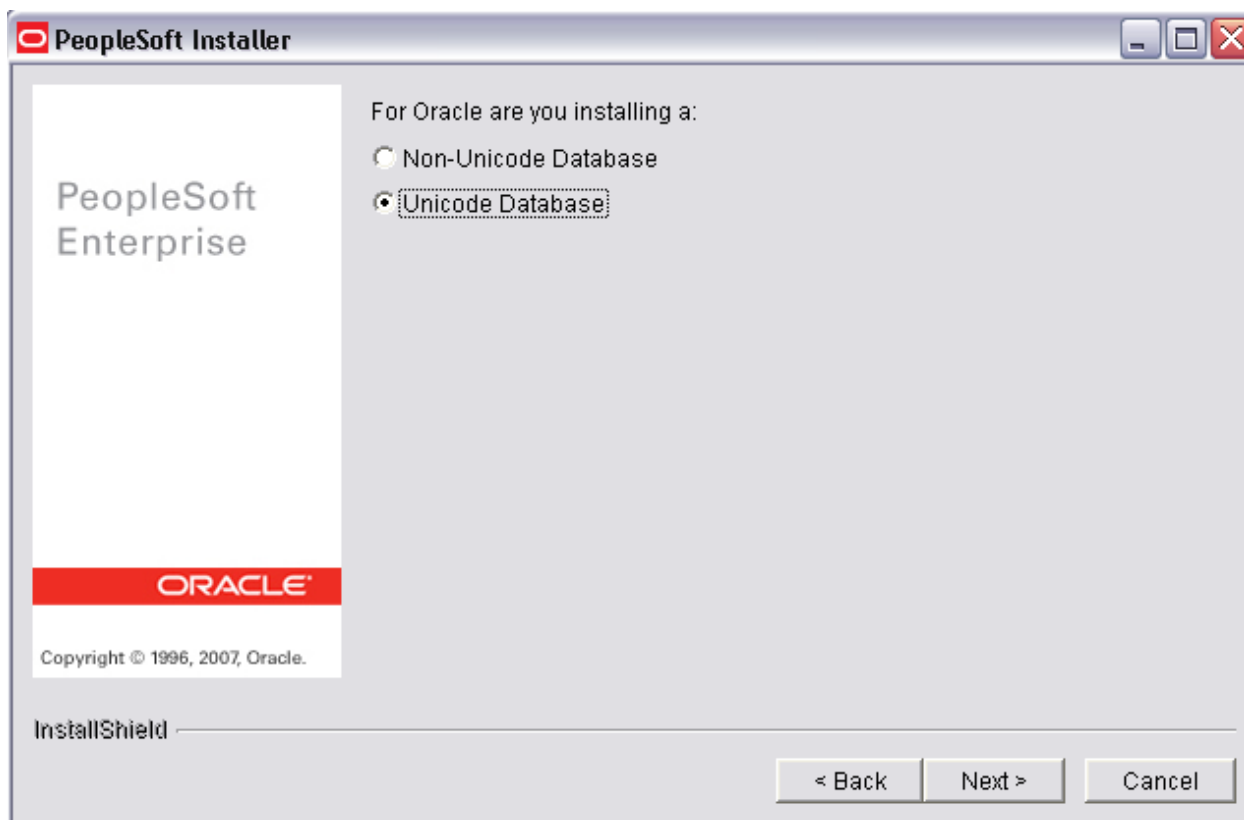
The PeopleSoft Installer database platform option page appears.



[PeopleSoft Installer – Database platform install option page](#)

5. Select the database install option that is based on your existing PeopleSoft HRMS 9.0 Multilingual Installation.
6. Click **Next**.

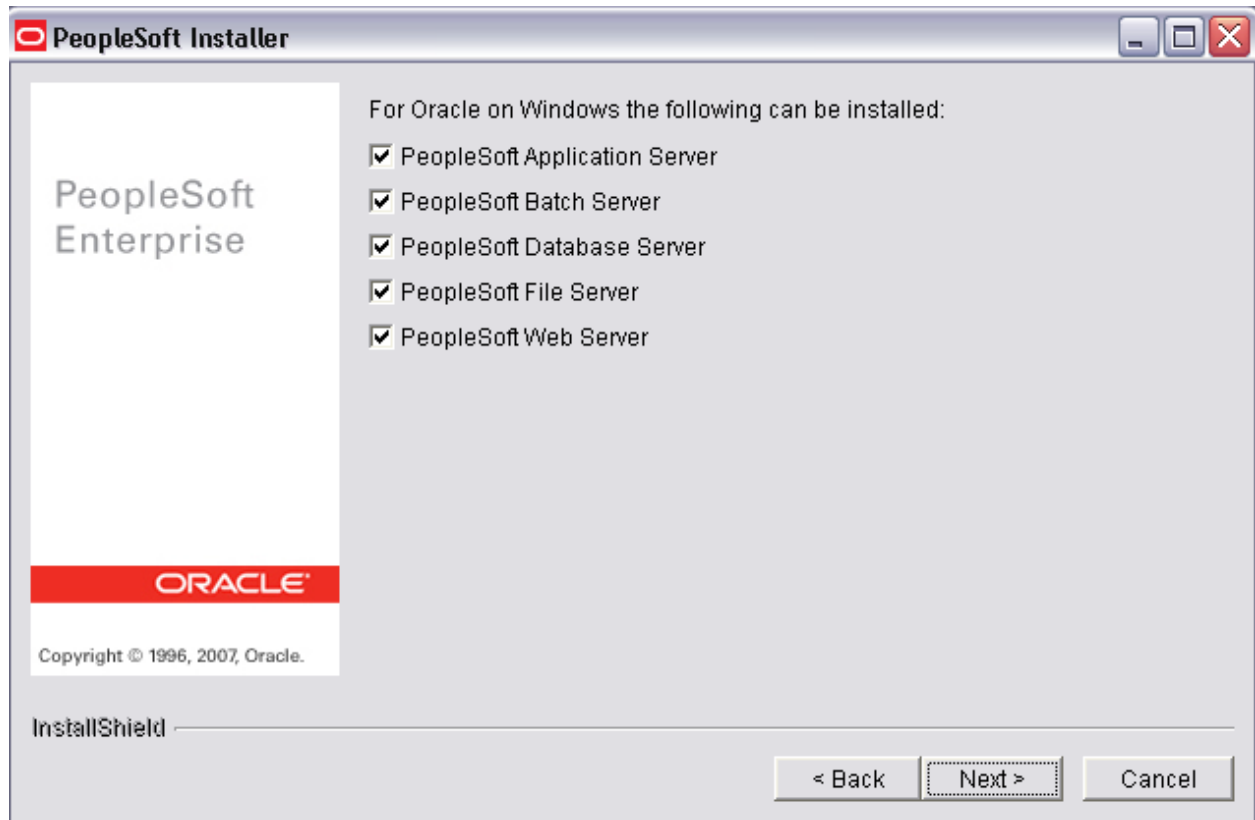
For certain database platforms, you will be prompted to specify Unicode or Non-Unicode. Select the database option that is based on your existing HRMS 9.0 Multilingual Installation.



[PeopleSoft Installer – Database platform install option page](#)

7. Click **Next**.

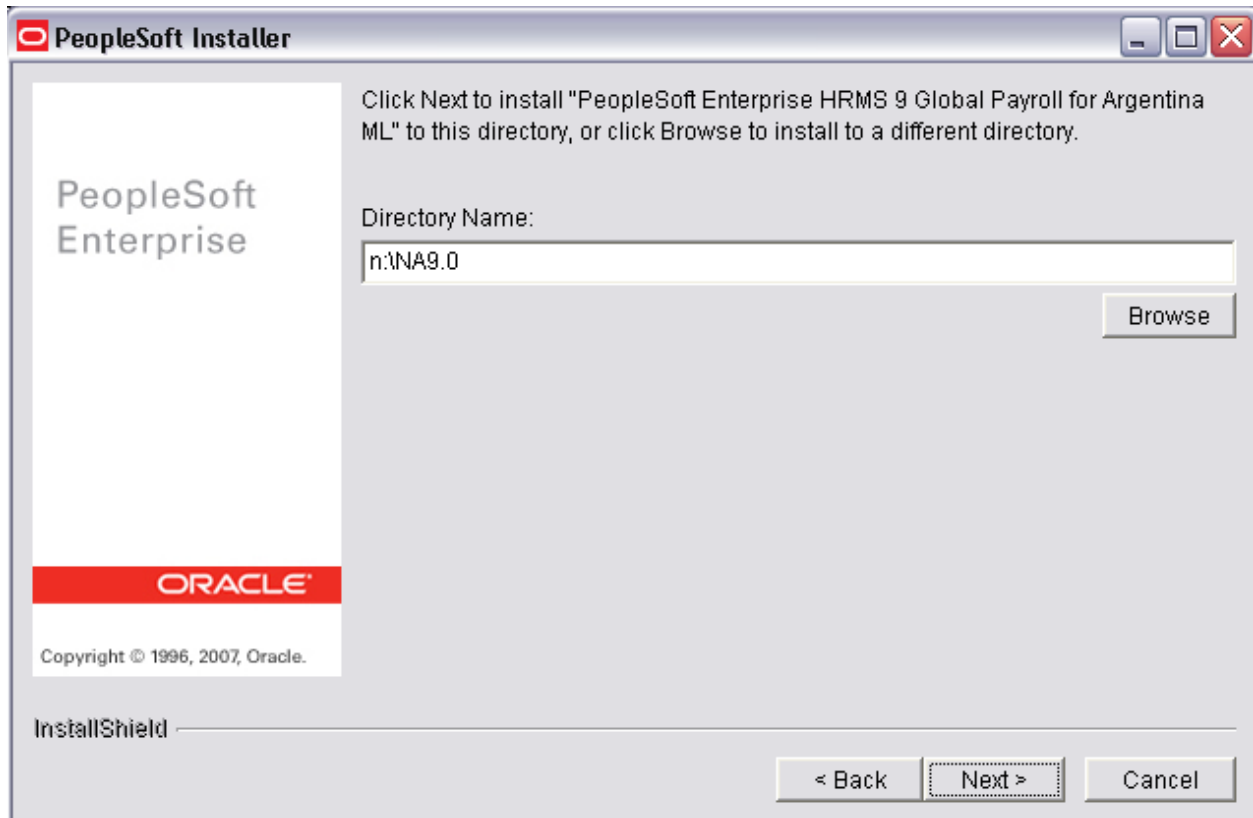
The PeopleSoft Installer Windows server option page appears.



[PeopleSoft Installer – Windows server options page](#)

8. Select the PeopleSoft component that you want to install.
9. Click **Next**.

The PeopleSoft Installer directory selection page appears.



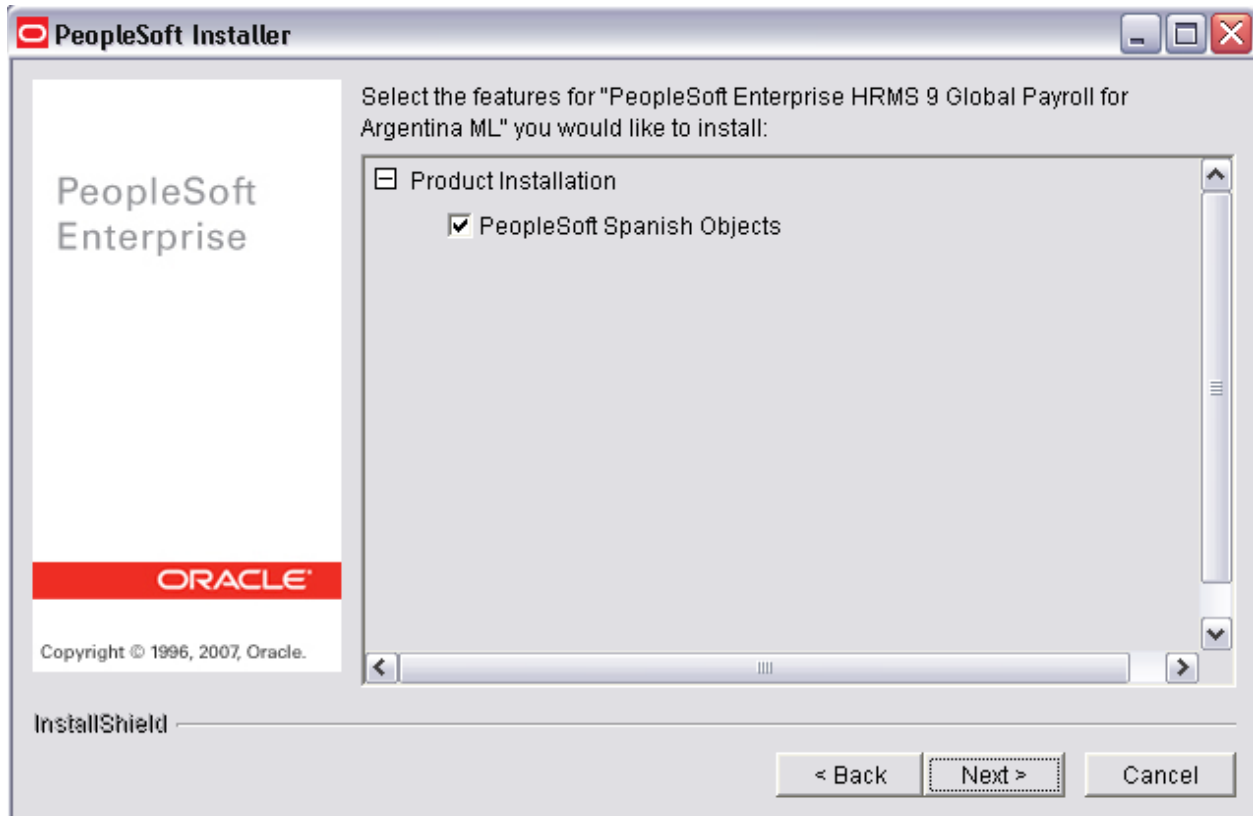
PeopleSoft Installer – Directory Name selection page

10. Specify the directory in which you want to install the application.

The directory that you select should be the one in which you installed Peoplesoft Enterprise HRMS 9.0 Multilingual. If you need to change the drive letter or directory name, click **Browse**.

11. Click **Next**.

The PeopleSoft Installer available product selection page appears.



PeopleSoft Installer – Select the features page

12. Select the language you wish to install.
13. Click **Next**.

Confirm your selection. If the incorrect directory appears, click **Back** to return to the main page where you can specify the correct installation directory.

14. Click **Next**.

The set-up program begins to install the files that are associated with the products that you selected.

15. If you need to cancel the installation process, click **Cancel** or press the **Esc** key.

Note. This documentation does not provide detailed information about the installation of application projects. For more information and details, see the PeopleSoft PeopleTools documentation.

Task 1-3 Enabling the Argentina Language Flag (Spanish)

Run the following DMS script in PeopleSoft Data Mover to enable the Argentina-language sessions:

```
Ar90_01_i . dms
```

Task 1-4 Copying the GP Argentina Project to the PeopleSoft HRMS Database

After you complete the PeopleSoft Global Payroll for Argentina 9.0 CD installation process, the AR900 project is located in the <PS_HOME>\Projects directory for PeopleSoft PeopleTools.

To copy the AR900 project into the PeopleSoft HRMS 9.0 database:

1. Sign in to the PeopleSoft HRMS 9.0 database using PeopleSoft Application Designer.
2. Select **Tools, Copy Project, and From File**.
3. For Import Directory, browse to folder <PS_HOME>\Projects.
4. Select the **AR900** project, and click **Select**.
5. Click **Options...** Ensure that *English* and *Common* are selected in the Copy options tab.
6. Click **OK**.
7. Click **Select All** to ensure that all object types are selected.
8. Click **Copy**.

Task 1-5 Building the AR900 Project

This step synchronizes the physical database structure for the tables in the AR900 project.

To Build the AR900 Project:

1. In PeopleSoft Application Designer, open the AR900 project and select **Build and Project**.

Note. DB2/OS390 installations require adjustments to these instructions: For table alters and creates, perform the build using the Build script file option. Adjust the script database information to match the environment before you execute the script. For more information about how to build the projects, refer to the PeopleSoft PeopleTools documentation for your database platform.

2. From the Build Options menu select **Create Tables** and from the Build Execute Options menu select **Execute and build script**.
3. Click **Settings** and select the following:
 - Create tab - Skip table if it already exists.
 - Logging tab - Fatal errors and warnings, Log to output window, and Log to file.
 - Scripts tab - Specify the output script file name.

4. Click **OK** to exit the Build Settings dialog.
5. Click **Build**.
You should receive no errors or warnings.
6. In PeopleSoft Application Designer, again using the AR900 project, select **Build** and **Project**.
7. From the Build Options menu select **Create Views** and from the Build Execute Options menu select **Execute and build script**.
8. Click **Settings** and select the following:
 - Create tab - Recreate View if it already exists.
 - Logging tab - Fatal errors and warnings, Log to output window, and Log to file.
 - Scripts tab - Specify the output script file name.
9. Click **OK** to exit the Build Settings dialog.
10. Click **Build**.
You should receive no errors or warnings.

Task 1-6 Installing Additional Database Changes Using PeopleSoft Data Mover

Run these scripts in PeopleSoft Data Mover to install additional database changes:

DMS Script Files: Global Payroll for Argentina 9.0		
DMS File Name	Data File	Description
AR900MSG.dms	AR900MSG.dat	Message catalog data.
AR900STR.dms	AR900STR.dat	Strings table entries.
AR900ROLE.dms	AR900ROLE.dat	Role definition.
AR900TREE.dms	AR900TREE.dat	Tree definiton

Note. If you are using Global Payroll for Argentina with the Spanish language, run the following scripts after running AR900MSG.dms, AR900STR.dms, and AR900ROLE.dms:

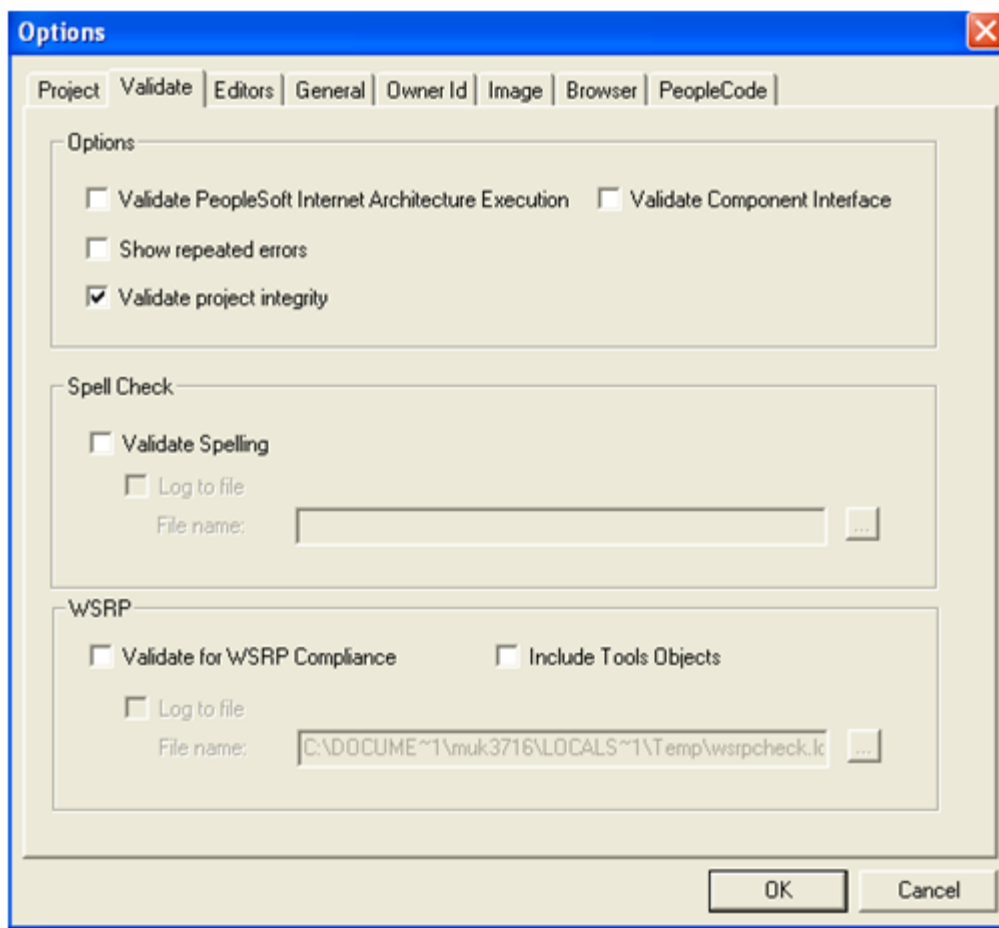
AR900MSG_ESP_i.dms – Translated Message catalog data
 AR900STR_ESP_i.dms – Translated Strings table entries
 AR900ROLE_ESP_i.dms – Translated Role definition

Task 1-7 Validating the Project Integrity

This project validates the project integrity for project AR900.

To validate the project integrity for project AR900:

1. In PeopleSoft Application Designer, open the project AR900.
2. Select **Tools, Options, Validate**.
3. Select the **Validate project integrity** check box.
4. Clear the remaining check boxes as they appear on the Options page, Validate tab and click **OK**.



Options page - Validate tab

5. Select **Tools, Validate Project**.

Note. When you validate the project, the system may prompt you to remove objects that are not valid from the project. You should select *No* to the prompt (leave invalid objects in the project).

Task 1-8 Copying the GP Argentina Multilingual Project into the HRMS 9.0 Database

After you complete the PeopleSoft Global Payroll for Argentina 9.0 Multilingual installation process, the AR900_ML project is located in the <PS_HOME>\Projects directory for PeopleSoft PeopleTools.

To copy the AR900_ML multilingual project into the HRMS 9.0 database:

Note. Perform this task only if you are using the Spanish language.

1. Sign in to the PeopleSoft HRMS 9.0 database using PeopleSoft Application Designer.
2. Select **Tools, Copy Project, and from File.**
3. For Import Directory, browse to folder <PS_HOME>\Projects.
4. Select the **AR900_ML** project, and click **Select.**
5. Click **Options...**, and ensure that *Spanish* is selected in the Copy options tab. Do not select “English” and “Common”, as you already copied these.
6. Click **OK.**
7. Click the **Select All** button to ensure that all objects are selected.
8. Click **Copy.**

The copying process continues until the entire PeopleSoft 9.0 Global Payroll Argentina Multilingual project is copied into the target HRMS 9.0 database. Once the project is copied, the project should be visible in Application Designer. You will not need to build this project.

Task 1-9 Adjusting Versions and Running Audit Reports on PeopleSoft HRMS 9 Database

Use *psae.exe*, located in directory <PS_HOME>\bin\client\winx86, to run the **VERSION Application Engine** program in the target PeopleSoft HRMS 9.0 database.

To adjust versions and run audit reports on the PeopleSoft HRMS 9 database:

1. Use the following command to execute the VERSION program:

```
psae.exe -CD <dbname> [-CS <server>] -CT <type> -CO <operid> -CP <pswd> -R <run control id> -I <process instance> -AI VERSION
```

Note. For RDBMS platform installations that require tablespaces, you must run SETSPACE.SQR to synchronize the tablespace information with the system catalog.

2. To complete the process, run the **DDDAUDIT.SQR** and **SYSAUDIT.SQR** reports to ensure that PeopleSoft Global Payroll for Argentina 9.0 did not introduce any exceptions.

Task 1-10 Granting Security to GP Argentina Objects

Use the Portal Security Sync from PeopleSoft Pure Internet Architecture to grant security to PeopleSoft Global Payroll Argentina objects.

To grant security to GP Argentina Objects:

1. Select **PeopleTools, Portal, Portal Security Sync**.
2. Select **Run Control ID as PORTAL_CSS**. If it is not already present, please add a new run control value from the **Add a new value** page.
3. Select the **Delete invalid security** check box.
4. Click **Run**.
5. Click **OK**.

Task 1-11 Setting Installation Options

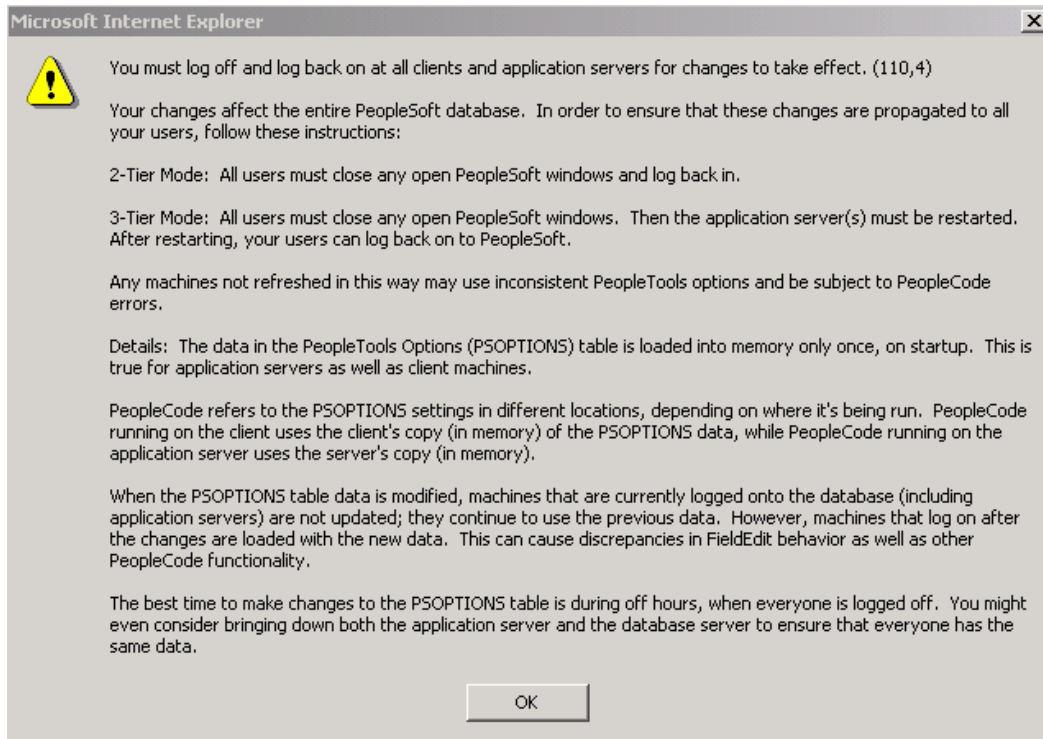
Oracle recommends that you update the PeopleSoft Global Payroll Country Extension indicators on the Installation page on both your HRSYS and HRDMO databases. This ensures that only the Country Extensions that you have licensed are turned on.

To set installation options:

1. Select **Set Up HRMS, Install, Installation Table**.
2. On the Products page, click the **Installed GP Countries** link to display a list of Countries.
3. Select the check box for Argentina that you have licensed (the only clear check boxes remaining should be for those Country Extensions that you have not licensed.)
4. Click **OK**.
5. On the Country Specific page, click the **Installed HR Countries** link to display a list of Countries.
6. Select the check box for Argentina that you have licensed.
7. Click **OK**.
8. Click **Save**.

Important! Later in this task these indicators are used to identify any additional updates that are necessary (as they are conditionally based on the Country Extensions that you have licensed). These indicators are also used in the Upgrade process, in the event that you are also upgrading to this release.

If it is necessary to make any changes to the Installation Table, the following informational message appears. You must then log off all clients, shut down and restart all application servers, and then log back on to PeopleSoft HRMS for this change to take effect.



Informational Message

Task 1-12 Installing the PeopleSoft Global Payroll for Argentina Extensions

This section describes the additional installation steps that are required to install the PeopleSoft Global Payroll for Argentina Extensions.

This section uses the following abbreviations and terms:

Abbreviation	PeopleSoft Global Payroll Terms
CE	Country Extension
GP	Global Payroll
HRDMO	HRMS DEMO database
HRSYS	HRMS SYSTEM database
ARRUL	Global Payroll Argentina Rule Data
ARSYS	Global Payroll Argentina System Data
ARDMO	Global Payroll Argentina Demo Data

The objects for the PeopleSoft Global Payroll (GP) Country Extensions (CE) are delivered as part of the HRSYS and HRDMO databases. These additional steps describe how to load the Country Extension-specific data.

Note. The CE objects already exist in your HRSYS and HRDMO databases. This installation process installs the additional data that applies to each CE and includes the CE rule definitions.

Important! Before you install any GP CE, you must complete the generic installation tasks in the PeopleSoft PeopleTools Installation Guide. In particular, you must set up the Process Scheduler before you install a GP CE.

Installing the ARRUL Rule Package

In this step, you will install the ARRUL Rule Package into an HRSYS or HRDMO database.

To install the ARRUL Rule Package into an HRSYS or HRDMO database:

1. Import Rule Package. In Data Mover, run the script arrul_imp.dms.

Note. Oracle recommends that you run Update Statistics on the GP_PKG_ELEMENTS and GP_PKG_PINMAP tables after each import of a Global Payroll Country Extension into a database. These tables increase in size substantially when you are installing Rules for a Country Extension. If you are using DB2, you can run this against tablespace GPAPP.

2. Compare Rule Package.
 - a) Select Set Up HRMS, Product Related, Global Payroll & Absence Management, Elements, Manage Global Payroll Packages, Apply Rule Package.
 - b) Select Find an Existing Value page (Search Page).
 - c) Enter ARRUL in the field Package ID and click **Search**.
 - d) Select the Package Processing page.
 - e) Select the Compare Package check box.
 - f) Click **Process**. This will launch the GP_PKG_CMP Application Engine program. You need to have the Process Scheduler running
 - g) Verify that the program completed with no errors (by reviewing the message log).
 - h) Click the **Go Back to Apply Rule Package** hyperlink
 - i) Enter ARRUL in the field Package ID and click **Search**.
 - j) Select the Package Elements page. Select the Package Upgrade tab.

- k) Make sure that the first element shows 'Success' in the Results column (as any invalid compares will sort to the top).

Note. If you do not see 'Success,' refer to the PeopleSoft Enterprise Global Payroll 9.0 PeopleBook: Using the Utilities. If you are unable to resolve the issue, contact Oracle's Global Customer Support.

3. Select the Upgrade Rule Package.
 - a) Select **Set Up HRMS, Product Related, Global Payroll & Absence Mgmt, Elements, Manage Global Payroll Packages, Apply Rule Package**.
 - b) Select Find an Existing Value page (Search Page).
 - c) Enter ARRUL in the field Package ID and click **Search**.
 - d) Select the Package Processing page.
 - e) Select the Upgrade Package check box.
 - f) Click **Process**. This will launch the GP_PKG_COPY Application Engine program. You need to have the Process Scheduler running.
 - g) Verify that the program completed with no errors (by reviewing the message log).
 - h) Click the **Go Back to Apply Rule Package** hyperlink.
 - i) Enter ARRUL in the field Package ID and click **Search**.
 - j) Select the Package Elements page. Select the Package Upgrade tab.
 - k) Make sure that the first element shows 'Success' in the Results column. Then scroll down until you are at the first element that has the Upgrade check box turned on and make sure that the Upgrade Status shows 'Done'.

Note. If you do not see 'Success', refer to the PeopleSoft Enterprise Global Payroll 9.0 PeopleBook: Using the Utilities. If you are unable to resolve the issue, contact Global Customer Support.

This completes the installation of the ARRUL Rule Package for GP Argentina.

Installing the ARSYS Non-Rule Package Elements and Records

In this step, you will install the ARSYS Non-Rule Package Elements and Records into an HRSYS or HRDMO database.

To install the ARSYS Non-Rule Package Elements and Records into an HRSYS or HRDMO database:

1. Import Non-Rule Package Elements.
 - a) In Data Mover, Run the script arsys_elements_imp.dms.

2. Compare Non-Rule Package.
 - a) Select **Set Up HRMS, Product Related, Global Payroll & Absence Mgmt, Elements, Manage Global Payroll Packages, Compare Non-Rule Package**.
 - b) Enter ARSYS in the field Package ID and click **Search**.
 - c) Select the Package Elements page.
 - d) Click **Compare**. The following message should be displayed:

Compare Process completed successfully. (17000,3013)

Import Non-Rule records can now be imported from the Source database.
 - e) Click **OK**.
3. Import Non-Rule Package Records
 - a) In Data Mover, Run the script arsys_records_imp.dms.
4. Upgrade Rule Package.
 - a) Select **Set Up HRMS, Product Related, Global Payroll & Absence Mgmt, Elements, Manage Global Payroll Packages, Upgrade Non-Rule Package**.
 - b) Enter ARSYS in the field Package ID and click **Search**.
 - c) Select the Package Records page.
 - d) Click **Upgrade**. The following message should be displayed:

Upgrade Process completed successfully (17000,3014)

Your data has been upgraded successfully.
 - e) Click **OK**.

This completes the installation of the ARSYS Non-Rule Package for GP Argentina.

Installing the ARDMO Non-Rule Package Elements and Records

In this step you will install the ARDMO Non-Rule Package elements and records into an HRDMO database only.

To install the ARDMO Non-Rule Package elements and records into an HRDMO database only:

1. Import Non-Rule Package Elements.
 - a) In Data Mover, run the script ardmo_elements_imp.dms

2. Compare Non-Rule Package Elements.
 - a) Select **Set Up HRMS, Product Related, Global Payroll & Absence Mgmt, Elements, Manage Global Payroll Packages, Compare Non-Rule Package.**
 - b) Enter ARDMO in the field Package ID and click **Search.**
 - c) Select the Package Elements page
 - d) Click **Compare.** The following message should be displayed:

Compare Process completed successfully (17000,3013)

Import Non-Rule records can now be imported from the Source database
 - e) Click **OK.**
3. Import Non-Rule Package Records
 - a) In Data Mover, run the script ardm_records_imp.dms
4. Upgrade Non-Rule Package.
 - a) Select **Set Up HRMS, Product Related, Global Payroll & Absence Mgmt, Elements, Manage Global Payroll Packages, Upgrade Non-Rule Package.**
 - b) Enter ARDMO in the field Package ID and click **Search.**
 - c) Select the Package Records page.
 - d) Click **Upgrade.** The following message should be displayed:

Upgrade Process completed successfully (17000,3014)

Your data has been upgraded successfully
5. Click **OK.**

This completes the installation of the ARDMO Non-Rule Package for GP Argentina.

Task 1-13 Installing the Global Payroll for Argentina Extensions, Multilingual Portion

This section describes the additional installation steps that are required to install the multilingual portion of the PeopleSoft Global Payroll for Argentina Extensions

Note. Perform this task only if you are using the Spanish language.

This section uses the following abbreviations and terms:

Abbreviation	PeopleSoft Global Payroll Terms
CE	Country Extension
GP	Global Payroll
HRDMO	HRMS DEMO database
HRSYS	HRMS SYSTEM database
ARRULESP	Global Payroll Argentina Translation Rule Data
ARSYSESP	Global Payroll Argentina Translation System Data

The objects for the PeopleSoft Global Payroll (GP) Country Extensions (CE) are delivered as part of the HRSYS and HRDMO databases. These additional steps describe how to load the Country Extension-specific data.

Note. The CE objects already exist in your HRSYS and HRDMO databases. This installation process installs the additional data that applies to each CE and includes the CE rule definitions.

Important! Before you install any GP CE, you must complete the generic installation tasks in the PeopleSoft PeopleTools Installation Guide. In particular, you must set up the Process Scheduler before you install a GP CE.

The installation process consists of the following steps:

1. Install Translation Rule Package (Spanish Translation) into the HRSYS or HRDMO Database.
2. Install Translation Non-Rule Package (Spanish Translation) into the HRSYS or HRDMO Database

Important! Step 2 must be run on a database that has a base language = ENG. Perform the following steps if you want to apply this to a database with a base language other than ENG:

- 1) Apply to an ENG database.
- 2) Swap the base language on this database.
- 3) Re-create the ARSYSESP Non-Rule Package.
- 4) Apply to your swapped base language database.

Installing the ARRULESP Translation Rule Package

In this step, you will install the ARRULESP Translation Rule Package into an HRSYS or HRDMO database.

To install the ARRULESP Translation Rule Package into an HRSYS or HRDMO database:

1. Import Rule Package. In Data Mover, run the script arrulesp_imp.dms.

Note. Oracle recommends that you run Update Statistics on the GP_PKG_ELEMENTS and GP_PKG_PINMAP tables after each import of a Global Payroll Country Extension into a database. These tables increase in size substantially when you are installing Rules for a Country Extension. If you are using DB2, you can run this against tablespace GPAPP.

2. Compare Rule Package.
 - a) Select **Set Up HRMS, Product Related, Global Payroll & Absence Management, Elements, Manage Global Payroll Packages, Apply Rule Package.**
 - b) Select **Find an Existing Value** page (Search Page).
 - c) Enter ARRULESP in the field Package ID and click **Search.**
 - d) Select the **Package Processing** page.
 - e) Select the **Compare Package** check box.
 - f) Click **Process.** This will launch the GP_PKG_CMP Application Engine program. You need to have the Process Scheduler running
 - g) Verify that the program completed with no errors (by reviewing the message log).
 - h) Click the **Go Back to Apply Rule Package** hyperlink
 - i) Enter ARRULESP in the field Package ID and click **Search.**
 - j) Select the **Package Elements** page. Select the Package Upgrade tab.
 - k) Make sure that the first element shows 'Success' in the Results column (as any invalid compares will sort to the top).

Note. If you do not see 'Success,' refer to the PeopleSoft Enterprise Global Payroll 9.0 PeopleBook: Using the Utilities. If you are unable to resolve the issue, contact Oracle's Global Customer Support.

3. Select the Upgrade Rule Package.
 - a) Select **Set Up HRMS, Product Related, Global Payroll & Absence Mgmt, Elements, Manage Global Payroll Packages, Apply Rule Package.**
 - b) Select **Find an Existing Value** page (Search Page).
 - c) Enter ARRULESP in the field Package ID and click **Search.**
 - d) Select the **Package Processing** page.

- e) Select the **Upgrade Package** check box.
- f) Click **Process**. This will launch the GP_PKG_COPY Application Engine program. You need to have the Process Scheduler running.
- g) Verify that the program completed with no errors (by reviewing the message log).
- h) Click the **Go Back to Apply Rule Package** hyperlink.
- i) Enter ARRULESP in the field Package ID and click **Search**.
- j) Select the **Package Elements** page. Select the **Package Upgrade** tab.
- k) Make sure that the first element shows 'Success' in the Results column. Then scroll down until you are at the first element that has the Upgrade check box turned on and make sure that the Upgrade Status shows 'Done'.

Note. If you do not see 'Success', refer to the PeopleSoft Enterprise Global Payroll 9.0 PeopleBook: Using the Utilities. If you are unable to resolve the issue, contact Global Customer Support.

This completes the installation of the ARRULESP Translation Rule Package for GP Argentina.

Installing the ARSYSESP Translation Non-Rule Package Elements and Records

In this step, you will install the ARSYSESP Translation Non-Rule Package Elements and Records into an HRSYS or HRDMO database.

To install the ARSYSESP Translation Non-Rule Package Elements and Records into an HRSYS or HRDMO database:

1. Import Non-Rule Package Elements.
 - a) In Data Mover, Run the script arsysesp_elements_imp.dms.
2. Compare Non-Rule Package.
 - a) Select **Set Up HRMS, Product Related, Global Payroll & Absence Mgmt, Elements, Manage Global Payroll Packages, Compare Non-Rule Package**.
 - b) Enter ARSYSESP in the field Package ID and click **Search**.
 - c) Select the **Package Elements** page.
 - d) Click **Compare**. The following message should be displayed:

This Package contains no Elements (17000,3015)

The records defined for this package do not contain any Payroll Elements.
 - e) Click **OK**.

- f) The following message should be displayed:

Compare Process completed successfully. (17000,3013)

Import Non-Rule records can now be imported from the Source database.
 - g) Click **OK**.
3. Import Non-Rule Package Records
- a) In Data Mover, Run the script arsysesp_records_imp.dms.
4. Upgrade Rule Package.
- a) Select **Set Up HRMS, Product Related, Global Payroll & Absence Mgmt, Elements, Manage Global Payroll Packages, Upgrade Non-Rule Package**.
 - b) Enter ARSYSESP in the field Package ID and click **Search**.
 - c) Select the **Package Records** page.
 - d) Click **Upgrade**. The following message should be displayed:

Upgrade Process completed successfully (17000,3014)

Your data has been upgraded successfully.
 - e) Click **OK**.

This completes the installation of ARSYSESP Translation Non-Rule Package for GP Argentina.