



MBE Frequency Chart

For the Multistate Bar Exam (MBE)

July 2022 Edition

DISCLAIMER

The *SmartBarPrep MBE Frequency Chart* (hereinafter “Study Guide”) is designed to assist you in studying for the Multistate Bar Exam (MBE) and the Uniform Bar Exam (UBE). It was NOT designed to be a prediction of what will be asked on the upcoming bar exam or any future examinations. Although many of the same topics, sub-topics, and rules (“topics”) have been repeated on past MBE questions, there is NO GUARANTEE that any future MBE will test the same or similar topics that have appeared on past exams. SmartBarPrep makes NO WARRANTIES or GUARANTEES as to what legal topics the National Conference of Bar Examiners and/or state bar examiners will test on the upcoming bar exam or any future examinations.

While we endeavor to provide accurate, complete, and up-to-date information in this Study Guide, the accuracy, completeness, adequacy, or currency of the content is not guaranteed. Your use of any content in this Study Guide or materials linked from our website (www.smartbarprep.com) is at your own risk.

Although SmartBarPrep does feel that using this Study Guide will help you on the MBE, WE MAKE NO GUARANTEE THAT YOU WILL PASS THE UNIFORM BAR EXAM (UBE), MULTISTATE BAR EXAM (MBE), OR ANY OTHER STATE’S BAR EXAM.

Under no circumstances shall we be liable for any losses or damages whatsoever, including direct, indirect, incidental, and consequential damages, resulting from the use of this Study Guide, whether based on contract, tort, or any other legal theory. This Study Guide and the materials contained herein are provided “as is,” and there are no representations or warranties, express or implied, with respect to the use of this Study Guide, or its contents. WE EXPRESSLY DISCLAIM ALL WARRANTIES, EXPRESS OR IMPLIED, OF ANY KIND WITH RESPECT TO ITS USE, INCLUDING BUT NOT LIMITED TO MERCHANTABILITY AND FITNESS FOR A PARTICULAR PURPOSE.

The content of this Study Guide is not intended to and does not constitute legal advice, nor is it intended to establish any attorney-client relationship.

Reading beyond this point constitutes your acceptance of the terms above.



We would love to hear from you.

**If you have any questions, comments, or suggestions
please feel free to email us at any time.**

contact@smartbarprep.com

NCBE Trademark Notice

UBE®, MBE®, MEE®, MPT®, MPRE®,
and NCBE® are trademarks of the National
Conference of Bar Examiners.

STUDY SMARTER

— OPTIMIZE YOUR BAR PREP —



Smart study tools that simplify and optimize your bar exam prep by helping you learn faster, practice more effectively, and prioritize the highly tested topics & rules.

Our Proven 3-Step Method to Study Smarter



1. Prioritize

Color-coded Priority Outlines, Attack Sheets, & Frequency Charts to streamline the mountain of information you need to know for the bar exam.

2. Optimize

Smart flashcards that use cognitive science & adaptive learning to accelerate the learning experience. Printable flashcards are also available.



3. Practice

Real questions licensed from the bar examiners along with our smart strategy to practice more effectively for the Essays, MBE, and PT's.

Table of Contents

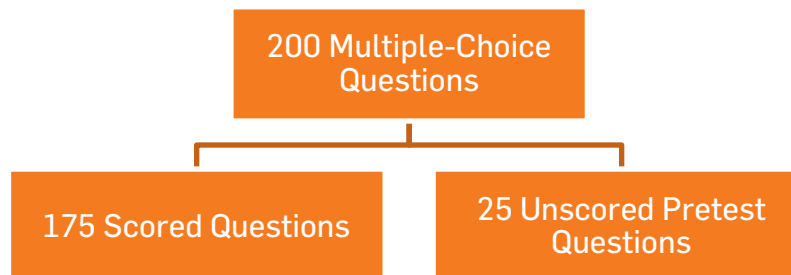
| Description | Page |
|-----------------------------|------|
| MBE Question Breakdown..... | 1 |
| MBE Frequency Chart | 3 |

MBE QUESTION BREAKDOWN

What You'll Learn

- ▶ Format & Number of MBE Questions – scored vs. unscored questions
- ▶ MBE Test Day Sessions – time and how many questions per session
- ▶ How Much Time to Spend Per MBE Question
- ▶ The 7 Subjects Tested on the MBE

Format & Number of MBE Questions



*The unscored questions are *indistinguishable and distributed evenly*, so **you must answer ALL 200 questions**.

MBE Test Day

The number MBE questions per session depends on if your jurisdiction is administering the exam remotely or in-person.

In-person bar exam jurisdictions use two 3-hour sessions with 100 MBE questions per session.

| In-Person Exam Jurisdictions | | |
|------------------------------------|---------|---------------|
| MBE Test Day – Two 3-hour Sessions | | |
| MBE Session # 1 | 3 Hours | 100 Questions |
| MBE Session # 2 | 3 Hours | 100 Questions |

Remote bar exam jurisdictions use four 90-minute sessions with 50 MBE questions per session.

| Remote Exam Jurisdictions | | |
|--|-----------|--------------|
| MBE Test Day – Four 90-minute Sessions | | |
| MBE Session # 1 | 1.5 Hours | 50 Questions |
| MBE Session # 2 | 1.5 Hours | 50 Questions |
| MBE Session # 3 | 1.5 Hours | 50 Questions |
| MBE Session # 4 | 1.5 Hours | 50 Questions |

Timing & Pace

To finish all MBE questions within each session, **you have 1.8 minutes (1 minute 48 seconds) per question.**

Subjects Tested on the MBE

Seven (7) Subjects are Tested on the MBE, *with 25 scored questions from each subject area:*

- ▶ Civil Procedure¹
- ▶ Constitutional Law
- ▶ Contracts
- ▶ Criminal Law & Procedure
- ▶ Evidence
- ▶ Real Property
- ▶ Torts

*Note, the additional 25 *unscored* pretest questions may be from any of the seven subject areas.

¹ Civil Procedure was added to the MBE in February 2015.

MBE FREQUENCY CHART

To simplify your MBE studying, below is a **frequency breakdown of each Subject and Sub-topic tested on the MBE** compiled from the most recent MBE Subject Matter Outline (the official MBE scope outline released by the NCBE). The chart also spells out how many questions will come from each Sub-topic category. Remember, the Sub-topic categories within each Subject area are NOT created equal, as some are tested in a higher percentage than others.

To optimize your MBE performance, you can use this chart to prioritize your studying by focusing on the **HIGHLY** tested MBE topics more than the lesser tested topics. Just don't ignore the lesser tested Sub-topic areas, as they will still show up on your exam.

| Subject | Sub-Topic Category | Ratio Tested | % Tested | # of Scored Questions |
|--|--|---------------------|-----------------|------------------------------|
| Civil Procedure | | | | |
| | I. Jurisdiction and Venue | 2/9 | 22.2% | 5 or 6 |
| | II. Law Applied by Federal Courts | 1/12 | 8.3% | 2 or 3 |
| | III. Pretrial Procedures | 2/9 | 22.2% | 5 or 6 |
| | IV. Jury Trials | 1/12 | 8.3% | 2 or 3 |
| | V. Motions | 2/9 | 22.2% | 5 or 6 |
| | VI. Verdicts and Judgments | 1/12 | 8.3% | 2 or 3 |
| | VII. Appealability and Review | 1/12 | 8.3% | 2 or 3 |
| <i>Total Scored Questions: Civil Procedure</i> | | | | 25 |
| Constitutional Law | | | | |
| | I. The Nature of Judicial Review | 1/6 | 16.7% | 4 or 5 |
| | II. The Separation of Powers | 1/6 | 16.7% | 4 or 5 |
| | III. The Relation of Nation and States in a Federal System | 1/6 | 16.7% | 4 or 5 |
| | IV. Individual Rights | 1/2 | 50.0% | 12 or 13 |
| <i>Total Scored Questions: Constitutional Law</i> | | | | 25 |
| Contracts | | | | |
| | I. Formation of Contracts | 1/4 | 25.0% | 6 or 7 |
| | II. Defenses to Enforceability | 1/8 | 12.5% | 3 or 4 |
| | III. Contract Content and Meaning | 1/8 | 12.5% | 3 or 4 |
| | IV. Performance, Breach, and Discharge | 1/4 | 25.0% | 6 or 7 |
| | V. Remedies | 1/8 | 12.5% | 3 or 4 |
| | VI. Third-Party Rights | 1/8 | 12.5% | 3 or 4 |
| *1/4 of all questions will be based on UCC Article 1 and 2 | | | | |
| <i>Total Scored Questions: Contracts</i> | | | | 25 |

| Subject | Sub-Topic Category | Ratio Tested | % Tested | # of Scored Questions |
|---|---|---------------------|-----------------|------------------------------|
| Criminal Law & Procedure | | | | |
| | I. Homicide | 1/8 | 12.5% | 3 or 4 |
| | II. Other Crimes | 1/8 | 12.5% | 3 or 4 |
| | III. Inchoate Crimes; Parties | 1/8 | 12.5% | 3 or 4 |
| | IV. General Principles | 1/8 | 12.5% | 3 or 4 |
| | V. Constitutional Protection of Accused Persons | 1/2 | 50.0% | 12 or 13 |
| <i>Total Scored Questions: Criminal Law & Procedure</i> | | | | 25 |
| Evidence | | | | |
| | I. Presentation of Evidence | 1/4 | 25.0% | 6 or 7 |
| | II. Relevancy and Reasons for Excluding Relevant Evidence | 1/3 | 33.3% | 8 or 9 |
| | III. Privileges and Other Policy Exclusions | 1/12 | 8.3% | 2 or 3 |
| | IV. Writings, Recordings, and Photographs | 1/12 | 8.3% | 2 or 3 |
| | V. Hearsay and Circumstances of its Admissibility | 1/4 | 25.0% | 6 or 7 |
| <i>Total Scored Questions: Evidence</i> | | | | 25 |
| Real Property | | | | |
| | I. Ownership of Real Property | 1/5 | 20.0% | 5 or 6 |
| | II. Rights in Real Property | 1/5 | 20.0% | 5 or 6 |
| | III. Real Estate Contracts | 1/5 | 20.0% | 5 or 6 |
| | IV. Mortgages/Security Devices | 1/5 | 20.0% | 5 or 6 |
| | V. Titles | 1/5 | 20.0% | 5 or 6 |
| <i>Total Scored Questions: Real Property</i> | | | | 25 |
| Torts | | | | |
| | I. Intentional Torts | 1/6 | 16.7% | 4 or 5 |
| | II. Negligence | 1/2 | 50.0% | 12 or 13 |
| | III. Strict Liability and Products Liability | 1/6 | 16.7% | 4 or 5 |
| | IV. Other Torts | 1/6 | 16.7% | 4 or 5 |
| <i>Total Scored Questions: Torts</i> | | | | 25 |
| Total Scored Questions: All 7 Subjects | | | | 175 |
| Total Unscored Questions* | | | | 25 |
| Total # of MBE Questions | | | | 200 |

*Note, the 25 unscored pretest questions may be from any of the seven subject areas.

OUR STUDY TOOLS

— OPTIMIZE YOUR BAR PREP —

Priority Outlines

Color-coded outlines to streamline the mountain of information you need to know for the bar exam. Includes priority ratings, each rule's frequency, list of exams tested, & model rule statements.



Smart Sheets

Concise breakdowns of the law tested (2-9 pages per subject) – with a color coded priority rating (high/med/low) – to focus on the highly tested MBE & Essay rules.



Smart Flashcards

Smart flashcards that use cognitive science & adaptive learning to accelerate the learning experience. Printable flashcards are also available.



Frequency Charts

Charts that show the frequency of items tested on the MBE and Essay sections – so you can see what's highly tested and prioritize your studying.



Smart Guides

Guides that simplify and explain how to prepare for the bar exam, with tips, strategies, & step-by-step approaches to maximize your score.



Real Practice Questions

Real questions licensed from the bar examiners along with our smart strategy to practice more effectively for the Essays, MBE, and PT's.

