

Mediant MSBR

Upgrading Firmware from Version 6.8
to Version 7.2

Table of Contents

1	Introduction	7
2	Hardware and Software Requirements.....	9
2.1	Hardware Requirements.....	9
2.2	Software Requirements	9
3	Upgrade Procedure	11
3.1	Single Network Mode	12
4	Data CLI Changes.....	13
4.1	DSL Operation Mode.....	13
4.2	Command Path Changes	13
5	Data CLI Changes Examples	15
5.1	Version 6.8 Configuration	15
5.2	Version 7.2.150 Configuration	21
6	CLI Voice Changes.....	31
6.1	Simple Voice Configuration Changes Example.....	31

This page is intentionally left blank.

Notice

Information contained in this document is believed to be accurate and reliable at the time of printing. However, due to ongoing product improvements and revisions, AudioCodes cannot guarantee accuracy of printed material after the Date Published nor can it accept responsibility for errors or omissions. Updates to this document and other documents as well as software files can be downloaded by registered customers at <http://www.audiocodes.com/downloads>.

This document is subject to change without notice.

Date Published: May-28-2017

WEEE EU Directive

Pursuant to the WEEE EU Directive, electronic and electrical waste must not be disposed of with unsorted waste. Please contact your local recycling authority for disposal of this product.

Customer Support

Customer technical support and services are provided by AudioCodes or by an authorized AudioCodes Service Partner. For more information on how to buy technical support for AudioCodes products and for contact information, please visit our Web site at www.audiocodes.com/support.

Abbreviations and Terminology

Each abbreviation, unless widely used, is spelled out in full when first used.

Related Documentation

Document Name
Media Gateway & SBC CLI Reference Guide Ver. 7.2
MSBR Simplifying Network CLI Configuration Note Ver. 7.2

Document Revision Record

LTRT	Description
23303	Initial document release for Version 7.2
23304	Added CLI Voice Changes section.

Documentation Feedback

AudioCodes continually strives to produce high quality documentation. If you have any comments (suggestions or errors) regarding this document, please fill out the Documentation Feedback form on our Web site at <http://www.audiocodes.com/downloads>.

1 Introduction

This document describes the following important information for MSBR users when upgrading to Version 7.2:

- **CLI Changes:** Most of the changes to the CLI affect the Voice configuration. Only a few of the CLI changes affect the Data configuration. These changes are described in this document.
- **Old CLI Script:** "show running-config" output that has been copied from Version 6.8 can be inserted into 7.2. Also commands copied from Version 6.8 will work if inserted using the full command text string. For Example: "show" will work, and "sh ..." will not work.
- **Autocomplete:** Entering CLI commands using autocomplete i.e. using the tab key, will not work for existing Version 6.8 commands whose path has been changed in Version 7.2 (as shown in Section 4.2).
- **Dual Network Mode:** When upgrade is performed from Version 6.8 to Version 7.2 and the existing Version 6.8 platform is configured to work in Dual Network mode, the Dual Network mode configuration remains. New MSBR devices with a clean installation of Version 7.2 are by default configured with a Single Network mode.

In addition to the above, this document also includes instructions on how to upgrade device firmware to Version 7.2 and also includes example configuration output for both Version 6.8 and Version 7.2.

This page is intentionally left blank.

2 Hardware and Software Requirements

This chapter describes the hardware and software requirements for running MSBR Version 7.2 firmware.

2.1 Hardware Requirements

The following hardware platforms are supported for MSBR Version 7.2:

- Mediant 500L MSBR
- Mediant 500 MSBR
- Mediant 800 MSBR

2.2 Software Requirements

- The software can be loaded to the MSBR using FTP, TFTP, HTTP or HTTPS. For best results, it is recommended to use HTTP or HTTPS servers.
- Upgrade to Version 7.2 needs to be performed from at least Version 6.80.286.002. If the MSBR version is lower than Version 6.80.286.002, the MSBR first needs to be upgraded to this version.

This page is intentionally left blank.

3 Upgrade Procedure

The upgrade can be performed using the CLI, Web GUI or by using Management Software using CWMP protocol.

➤ **To upgrade using the CLI, do one of the following:**

- Copy firmware from an HTTP server using IP:

```
copy firmware from
http://10.199.0.100/MSBR_SIP_F7.20A.140.512.cmp
```

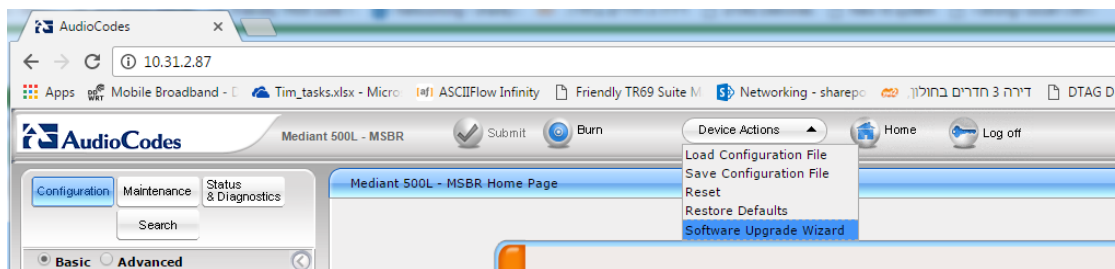
- Copy firmware using an HTTPS server using a DNS name

```
copy firmware from
https://someserver/MSBR_SIP_F7.20A.140.512.cmp
```

➤ **To upgrade using the Web:**

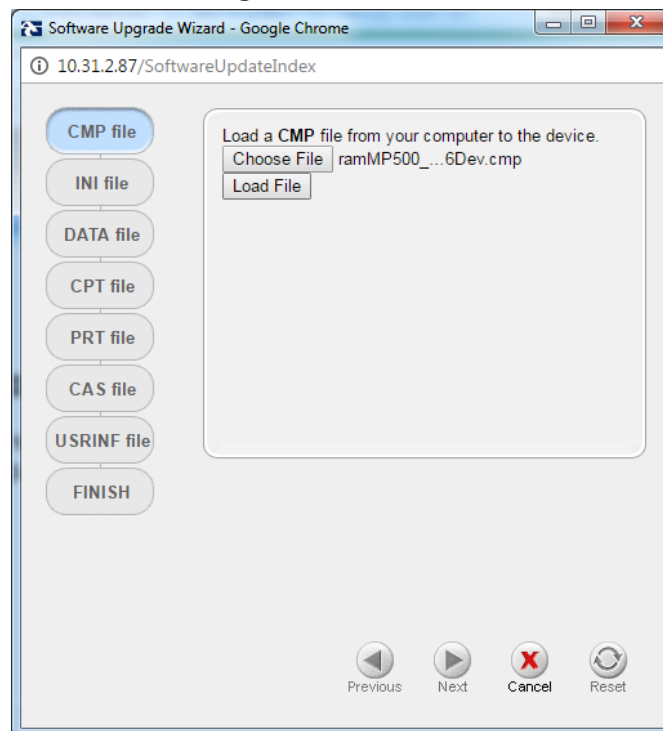
1. From the Device Actions drop-down list, select **Software Upgrade Wizard**:

Figure 3-1: Software Upgrade Wizard



2. Choose a file to load and click the **Load File** button.

Figure 3-2: Load File



3. When the file has finished loading, click the **Reset** button.

Following the upgrade, specific commands will be located in different paths. If management software is used, for example a CWMP server, make sure that you have copied a Version 7.2.150 or later configuration file to the Management server. It is recommended to download the new configuration to the Management Software after the MSBR have been upgraded.

It is possible to manually download the configuration from the device using the copy command. For example:

```
copy cli-script to tftp://10.51.13.5/config.cli
```

This command copies the configuration in the form of a CLI script (this is displayed when the Show Run command is used) to the TFTP server address e.g. 10.51.13.5 to the file config.cli. You can also use a FTP, HTTP, or HTTPS server for this command.

3.1 Single Network Mode

After you have upgraded, it is recommended to configure your device for the Single Network mode. In this mode of operation, the Voice application runs on the MSBR as a linked application, and therefore the network configuration is not required to be configured on the Voice part. For more information about switching to Single Network mode, refer to document *MSBR Simplifying Network CLI Configuration Note Ver. 7.2*.

4 Data CLI Changes

This chapter summarizes the changes to the CLI interface for Version 7.2.

4.1 DSL Operation Mode

All subcommands from the DSL interface were removed because the DSL operation mode was changed. From this version onwards, users cannot configure the specific DSL operation mode ADSL or VDSL. These operation modes will be automatically selected by the device through sensing the signals on the DSL line.

4.2 Command Path Changes

In Version 7.2, the location for specific commands has been changed in the command tree.

Example: Binding an application configuration to an interface.

- Version 6.8:

```
# configure system
(config-system)# bind interface gigabitethernet 0/0 voip
```

- Version 7.2:

```
# configure network
(config-network)# bind interface gigabitethernet 0/0 voip
```

The following table describes the changes in Configuration commands:

Table 4-1: Configuration Command Path Changes

Command	Description	Command Path	
		Version 6.8	Version 7.2
bind	Binds application to interface.	config-system	config-network
interface	Configures OSN interface.	config-system	config-network
hostname	Sets product hostname.	config-system	config-network
nqm	Configures Network Quality Monitoring.	config-system	config-network
tftp-server	Internal TFTP server	config-system	config-network
logging	Logging configuration	config-system	config-troubleshoot
access-list	Network access list.	config-voip	config-network
dhcp-server	DHCP server configuration.	config-voip (was previously dhcp)	config-network
dns	DNS configuration.	config-voip	config-network

The following table describes these changes in Show commands:

Table 4-2: Show Commands Changes

Command	Description	Version 6.8 Path	Version 7.2 Path
<code>show version</code>	Displays software version.	Show system version	Show version
<code>show system date</code> or <code>show system time</code>	Displays current system date or time.	Show system date Or Show system time	show system clock
<code>show system nqm</code>	Displays networking information of VoIP applications.	Show system nqm	Show nqm

5 Data CLI Changes Examples

This chapter shows comparison example running configurations for Version 6.8 and Version 7.2.150.

5.1 Version 6.8 Configuration

```
# Running Configuration

## VoIP Configuration

configure voip
  tls 0
    name default
    tls-version unlimited
    ciphers-server "RC4:AES128"
    ciphers-client "RC4:DEFAULT"
    oosp-server disable
    oosp-port 2560
    oosp-default-response reject
  exit
coders-and-profiles coders-group-0 0
  name "g711Alaw64k"
  p-time 20
  activate
exit
interface network-dev 0
  name "vlan 1"
  activate
exit
interface network-if 0
  ip-address 192.168.0.2
  prefix-length 24
  gateway 192.168.0.1
  name "Voice"
  primary-dns 192.168.0.1
  underlying-dev "vlan 1"
  activate
exit
voip-network realm 0
  name "MRWAN"
  ipv4if "WAN"
  port-range-start 6000
  session-leg 256
  port-range-end 8550
  is-default true
  activate
exit
voip-network srd 0
  name "SRDWAN"
  media-realm-name "MRWAN"
  activate
exit
voip-network sip-interface 0
  interface-name "SIPWAN"
  network-interface "WAN"
  activate
exit
voip-network proxy-set 0
  proxy-name ""
```

```
    activate
  exit
  gw hunt-or-trunk-group trunk-group 0
    trunk-group-id 1
    first-b-channel 1
    last-b-channel 1
    first-phone-number "1001"
    module 2
    activate
  exit
  gw routing ip2tel-routing 0
    dst-phone-prefix "*"
    trunk-group-id 1
    src-phone-prefix "*"
    activate
  exit
  gw hunt-or-trunk-group trunk-group-setting 0
    trunk-group-id 1
    channel-select-mode dst-phone-number
    activate
  exit
  gw digitalgw rp-network-domains 1
    name "dsn"
    activate
  exit
  gw digitalgw rp-network-domains 2
    name "dod"
    activate
  exit
  gw digitalgw rp-network-domains 3
    name "drsn"
    activate
  exit
  gw digitalgw rp-network-domains 5
    name "uc"
    activate
  exit
  gw digitalgw rp-network-domains 7
    name "cuc"
    activate
  exit
  gw digitalgw digital-gw-parameters
    answer-detector-cmd 10486144
    energy-detector-cmd 587202560
    activate
  exit
  gw analoggw authentication 0
    user-name "1001"
    password C35/aHw+T31zfQ== obscured
    activate
  exit
  ldap
    ldap-search-server-method sequentialy
    activate
  exit
  media udp-port-configuration
    udp-port-spacing 10
    activate
  exit
  services least-cost-routing routing-rule-groups 0
    lcr-default-cost highest-cost
    activate
```



```
exit
sip-definition proxy-and-registration
  authentication-mode per-endpoint
  enable-proxy use-proxy
  enable-registration on
  activate
exit
sip-definition advanced-settings
  set ldap-primary-key "telephoneNumber"
  activate
exit
tdm
  pcm-law-select mulaw
  activate
exit
voip-network proxy-ip 0
  proxy-address "10.4.2.102"
  activate
exit
exit

## System Configuration

configure system
  ntp
    set primary-server "0.0.0.0"
    activate
  exit
  radius
    set shared-secret "$1$woS2sLC0opqIjoKZng=="
    activate
  exit
  snmp
    no activate-keep-alive-trap
    activate
  exit
  web
    wan-http-allow on
    activate
  exit
hostname "Mediant 500L - MSBR"
configuration-version 0
exit
configure data
  radio shutdown
  interface GigabitEthernet 0/0
    ip address dhcp
    no ip dhcp-client default-route
    mtu auto
    desc "WAN Copper"
    no ipv6 enable
    speed auto
    duplex auto
    no service dhcp
    ip dns server static
  napt
  firewall enable
  no shutdown
  exit
  interface Fiber 0/1
    no ip address
    mtu auto
```

```
desc "WAN Fiber"
no ipv6 enable
no service dhcp
ip dns server static
no shutdown
exit
interface dsl 0/2
#DSL configuration is automatic
#Termination cpe
mode ADSL
auto-switch-attempts vdsl 2 vdsl-v43 0 adsl 2
no shutdown
exit
interface EFM 0/2
#This interface is DISABLED due to physical layer configuration
no ip address
mtu 1568
desc "WAN DSL"
no ipv6 enable
no service dhcp
ip dns server static
no shutdown
exit
interface FastEthernet 1/1
speed auto
duplex auto
switchport mode trunk
switchport trunk native vlan 1
no shutdown
exit
interface FastEthernet 1/2
speed auto
duplex auto
switchport mode trunk
switchport trunk native vlan 1
no shutdown
exit
interface FastEthernet 1/3
speed auto
duplex auto
switchport mode trunk
switchport trunk native vlan 1
no shutdown
exit
interface FastEthernet 1/4
speed auto
duplex auto
switchport mode trunk
switchport trunk native vlan 1
no shutdown
exit
interface ATM 0/0
encapsulation ethoa-snap
pvc 0/35
ubr
ip address auto
no ip dhcp-client default-route
no ipv6 enable
ip dns server auto
napt
firewall enable
mtu auto
```

```
exit
interface VLAN 1
  no ip address
  bridge-group 1
  mtu auto
  desc "LAN switch VLAN 1"
  no ipv6 enable
  no service dhcp
  no link-state monitor
  no shutdown
exit
interface BVI 1
  ip address 192.168.0.1 255.255.255.0
  mtu auto
  desc "LAN Bridge"
  no ipv6 enable
  ip dhcp-server network 192.168.0.3 192.168.0.8 255.255.255.0
  ip dhcp-server dns-server 0.0.0.0
  ip dhcp-server netbios-name-server 0.0.0.0
  ip dhcp-server lease 0 1 0
  ip dhcp-server provide-host-name
  ip dhcp-server ntp-server 0.0.0.0
  ip dhcp-server tftp-server 0.0.0.0
  ip dhcp-server override-router-address 0.0.0.0
  ip dhcp-server next-server 0.0.0.0
  service dhcp
  ip dns server static
  no napt
  no firewall enable
  no shutdown
exit
interface dot11radio 1
#This interface is DISABLED due to physical layer configuration
  no ip address
  bridge-group 1
  mtu auto
  desc "LAN Wireless 802.11n Access Point"
  no ipv6 enable
  no service dhcp
  ssid MSBR
  broadcast
  security mode NONE
  no security mac mode
  mode ngb
  channel width 40/20
  channel auto
  power 100
  beacon dtim-period 1
  beacon period 100
  fragment threshold 2346
  cts mode none
  cts type cts
  burst num 3
  burst time 2
  rts threshold 2346
  wmm
  shutdown
exit
interface pppoe 0
  firewall enable
  napt
  mtu auto
```

```

ppp user tim obscured-pass Vhc2aWtpb2lr
ppp authentication chap
no ppp authentication ms-chap
no ppp authentication ms-chap-v2
no ppp authentication pap
ppp lcp-echo 6 5
no ppp compression
ip address auto
no ipv6 address
ip dns server auto
underlying GigabitEthernet 0/0
network wan
no shutdown
exit
qos match-map input "test" EVI 1
  match any
  set precedence routine
exit
ip nat translation udp-timeout 120
ip nat translation tcp-timeout 3600
ip nat translation icmp-timeout 6
ip firewall allow-icmp
# Note: The following WAN ports are in use by system services,
#       conflicting rules should not be created:
#       Ports 80 - 80 --> HTTP
#       Ports 82 - 82 --> TR069
#       Ports 6000 - 8550 --> RealmPortPool::MRWAN
#       Ports 5060 - 5060 --> SIPUDP#0
#       Ports 5060 - 5060 --> SIPLISTENING#0
#       Ports 5061 - 5061 --> SIPLISTENING#0
# Note: The following NAT rules are in effect for system services,
#       conflicting rules should not be created:
#       RealmPortPool::MRWAN: LAN ports 6000-8550 to WAN IP 10.31.2.101 ports
6000-8550, interface GigabitEthernet 0/0
#       SIPUDP#0: LAN ports 5060-5060 to WAN IP 10.31.2.101 ports 5060-5060,
interface GigabitEthernet 0/0
#       SIPLISTENING#0: LAN ports 5060-5060 to WAN IP 10.31.2.101 ports 5060-
5060, interface GigabitEthernet 0/0
#       SIPLISTENING#0: LAN ports 5061-5061 to WAN IP 10.31.2.101 ports 5061-
5061, interface GigabitEthernet 0/0
ip route 0.0.0.0 0.0.0.0 PPPOE 0 1
ip route 10.4.2.102 255.255.255.255 10.31.0.1 GigabitEthernet 0/0 1
ip domain name home
ip domain localhost msbr
pm sample-interval minute 5
pm sample-interval seconds 15
exit
    
```

5.2 Version 7.2.150 Configuration

```
# Running Configuration M500L

## IP NETWORK

configure network
  tls 0
    name default
    tls-version unlimited
    ciphers-server "RC4:AES128"
    ciphers-client "RC4:DEFAULT"
    oosp-server disable
    oosp-port 2560
    dh-key-size 1024
    oosp-default-response reject
  exit
network-dev 0
  name "vlan 1"
  activate
exit
interface network-if 0
  ip-address 192.168.0.2
  prefix-length 24
  gateway 192.168.0.1
  name "Voice"
  primary-dns 192.168.0.1
  underlying-dev "vlan 1"
  activate
exit
network-settings
  single-net-mode disable
  activate
exit
# The following line is not activated
poe-table 0
  port-enable enable
  no activate
exit
# The following line is not activated
poe-table 1
  port-enable enable
  no activate
exit
# The following line is not activated
poe-table 2
  port-enable enable
  no activate
exit
# The following line is not activated
poe-table 3
  port-enable enable
  no activate
exit
# The following line is not activated
poe-table 4
  port-enable enable
  no activate
exit
# The following line is not activated
poe-table 5
```

```
port-enable enable
no activate
exit
# The following line is not activated
poe-table 6
port-enable enable
no activate
exit
# The following line is not activated
poe-table 7
port-enable enable
no activate
exit
# The following line is not activated
poe-table 8
port-enable enable
no activate
exit
# The following line is not activated
poe-table 9
port-enable enable
no activate
exit
# The following line is not activated
poe-table 10
port-enable enable
no activate
exit
# The following line is not activated
poe-table 11
port-enable enable
no activate
exit
exit

## SIGNALING & MEDIA

configure voip
coders-and-profiles audio-coders-groups 0
coders-group-name "AudioCodersGroups_0"
activate
exit
coders-and-profiles audio-coders 0/0
name g711-alaw
p-time 20
rate 64
activate
exit
gateway trunk-group 0
trunk-group-id 1
first-b-channel 1
last-b-channel 1
first-phone-number "1001"
module 2
activate
exit
realm 0
name "MRWAN"
ipv4if "WAN"
port-range-start 6000
session-leg 256
is-default enable
```

```
activate
exit
sbc routing sbc-routing-policy 0
  name "Default_SBCRoutingPolicy"
  lcr-default-cost highest-cost
activate
exit
srd 0
  name "SRDWAN"
  activate
exit
sip-interface 0
  interface-name "SIPWAN"
  network-interface "WAN"
  media-realm-name "MRWAN"
  activate
exit
proxy-set 0
  proxy-name "ProxySet_0"
  gwipv4-sip-int-name "SIPWAN"
  activate
exit
ip-group 0
  name "Default_IPG"
  proxy-set-name "ProxySet_0"
  classify-by-proxy-set disable
  activate
exit
gateway trunk-group-setting 0
  trunk-group-id 1
  channel-select-mode dst-phone-number
  activate
exit
gateway routing gw-routing-policy 0
  lcr-default-cost highest-cost
  activate
exit
gateway routing ip2tel-routing 0
  dst-phone-prefix "*"
  trunk-group-id 1
  src-phone-prefix "*"
  activate
exit
gateway digital settings
  answer-detector-cmd 10486144
  energy-detector-cmd 587202560
  activate
exit
gateway digital rp-network-domains 1
  name "dsn"
  activate
exit
gateway digital rp-network-domains 2
  name "dod"
  activate
exit
gateway digital rp-network-domains 3
  name "drsn"
  activate
exit
gateway digital rp-network-domains 5
  name "uc"
```

```
activate
exit
gateway digital rp-network-domains 7
  name "cuc"
  activate
exit
gateway analog authentication 0
  user-name "1001"
  password C35/aHw+T31zfQ== obscured
  activate
exit
gateway analog authentication 1
  user-name ""
  activate
exit
gateway analog authentication 2
  user-name ""
  activate
exit
gateway analog authentication 3
  user-name ""
  activate
exit
gateway analog authentication 4
  user-name ""
  activate
exit
gateway analog authentication 5
  user-name ""
  activate
exit
gateway analog authentication 6
  user-name ""
  activate
exit
gateway analog authentication 7
  user-name ""
  activate
exit
media tdm
  pcm-law-select mulaw
  activate
exit
media rtp-rtcp
  udp-port-spacing 10
  activate
exit
proxy-ip 0/0
  proxy-address "10.4.2.102"
  activate
exit
sip-definition settings
  ldap-primary-key "telephoneNumber"
  activate
exit
sip-definition proxy-and-registration
  authentication-mode per-endpoint
  enable-proxy use-proxy
  enable-registration on
  activate
exit
exit
```



```
## ADMINISTRATION

configure system
ntp
  primary-server "0.0.0.0"
  activate
exit
snmp settings
  no activate-keep-alive-trap
  activate
exit
web
  wan-http-allow on
  activate
exit
hostname M500L
configuration-version 0
create-users-table
user Admin
  password
29237978cb53f3b4dfabd1c2c61b454dade6682ee89fe8209935c7b640141aea8b4a3a83682cbc4ce8
2f89f6d2044ecd obscured
  public key %
  status valid
  privilege sec-admin
  password-age 0
  block-duration 60
  session-timeout 15
  session-limit 5
  cli-session-limit -1
exit
user User
  password
e1ealbdcb596c22c1c8b92aa5a114bf614fed569b5e6454857f5ad8194f36f530ed0adfd864ed68490
cc329baa1281be obscured
  public key %
  status valid
  privilege user
  password-age 0
  block-duration 60
  session-timeout 15
  session-limit 5
  cli-session-limit -1
exit
exit

## TROUBLESHOOT

configure troubleshoot
activity-log
  config-changes off
  files-loading off
  device-reset off
  flash-burning off
  software-update off
  unauthorized-access off
  sensitive-config-changes off
  login-and-logout off
  cli-commands-log off
  action-execute off
  activate
exit
```

```
activate
exit

# DATA ROUTER

configure data
radio shutdown
interface GigabitEthernet 0/0
 ip address dhcp
 no ip dhcp-client default-route
 mtu auto
 desc "WAN Copper"
 no ipv6 enable
 speed auto
 duplex auto
 no service dhcp
 ip dns server static
 napt
 firewall enable
 no shutdown
exit
interface Fiber 0/1
 no ip address
 mtu auto
 desc "WAN Fiber"
 no ipv6 enable
 no service dhcp
 ip dns server static
 no shutdown
exit
interface dsl 0/2
 #DSL configuration is automatic
 #Termination cpe
 no shutdown
exit
interface EFM 0/2
 #This interface is DISABLED due to physical layer configuration
 no ip address
 mtu auto
 desc "WAN DSL"
 no ipv6 enable
 no service dhcp
 ip dns server static
 no shutdown
exit
interface FastEthernet 1/1
 speed auto
 duplex auto
 switchport mode trunk
 switchport trunk native vlan 1
 no shutdown
exit
interface FastEthernet 1/2
 speed auto
 duplex auto
 switchport mode trunk
 switchport trunk native vlan 1
 no shutdown
exit
interface FastEthernet 1/3
 speed auto
 duplex auto
```

```
switchport mode trunk
switchport trunk native vlan 1
no shutdown
exit
interface FastEthernet 1/4
speed auto
duplex auto
switchport mode trunk
switchport trunk native vlan 1
no shutdown
exit
interface ATM 0/0
encapsulation ethoat-snap
pvc 0/35
ubr
ip address auto
no ip dhcp-client default-route
no ipv6 enable
ip dns server auto
napt
firewall enable
mtu auto
exit
interface VLAN 1
no ip address
bridge-group 1
mtu auto
desc "LAN switch VLAN 1"
no ipv6 enable
no service dhcp
no link-state monitor
no shutdown
exit
interface BVI 1
ip address 192.168.0.1 255.255.255.0
mtu auto
desc "LAN Bridge"
no ipv6 enable
ip dhcp-server network 192.168.0.3 192.168.0.8 255.255.255.0
ip dhcp-server dns-server 0.0.0.0
ip dhcp-server netbios-name-server 0.0.0.0
ip dhcp-server lease 0 1 0
ip dhcp-server provide-host-name
ip dhcp-server ntp-server 0.0.0.0
ip dhcp-server tftp-server 0.0.0.0
ip dhcp-server override-router-address 0.0.0.0
ip dhcp-server next-server 0.0.0.0
service dhcp
ip dns server static
no napt
no firewall enable
no shutdown
exit
interface dot11radio 1
#This interface is DISABLED due to physical layer configuration
no ip address
bridge-group 1
mtu auto
desc "LAN Wireless 802.11n Access Point"
no ipv6 enable
no service dhcp
ssid MSBR
```

```

broadcast
security mode NONE
no security mac mode
mode ngb
channel width 40/20
channel auto
power 100
beacon dtim-period 1
beacon period 100
fragment threshold 2346
cts mode none
cts type cts
burst num 3
burst time 2
rts threshold 2346
wmm
shutdown
exit
interface pppoe 0
    firewall enable
    napt
    mtu auto
    ppp user tim obscured-pass Vhc2aWtpb2lr
    ppp authentication chap
    no ppp authentication ms-chap
    no ppp authentication ms-chap-v2
    no ppp authentication pap
    ppp lcp-echo 6 5
    no ppp compression
    ip address auto
    no ipv6 address
    ip dns server auto
    underlying GigabitEthernet 0/0
    network wan
    no shutdown
exit
qos match-map input "test" BVI 1
    match any
    set precedence routine
exit
ip nat translation udp-timeout 120
ip nat translation tcp-timeout 3600
ip nat translation icmp-timeout 6
ip firewall allow-icmp
# Note: The following WAN ports are in use by system services,
#       conflicting rules should not be created:
#       Ports 80 - 80 --> HTTP
#       Ports 82 - 82 --> TR069
#       Ports 6000 - 8559 --> RealmPortPool::MRWAN
#       Ports 5060 - 5060 --> SIPUDP#0
#       Ports 5060 - 5060 --> SIPLISTENING#0
#       Ports 5061 - 5061 --> SIPLISTENING#0
# Note: The following NAT rules are in effect for system services,
#       conflicting rules should not be created:
#       RealmPortPool::MRWAN: LAN ports 6000-8559 to WAN IP 10.31.2.101 ports
6000-8559, interface GigabitEthernet 0/0
#       SIPUDP#0: LAN ports 5060-5060 to WAN IP 10.31.2.101 ports 5060-5060,
interface GigabitEthernet 0/0
#       SIPLISTENING#0: LAN ports 5060-5060 to WAN IP 10.31.2.101 ports 5060-
5060, interface GigabitEthernet 0/0
#       SIPLISTENING#0: LAN ports 5061-5061 to WAN IP 10.31.2.101 ports 5061-
5061, interface GigabitEthernet 0/0
ip route 0.0.0.0 0.0.0.0 PPPOE 0 1
    
```

```
ip route 10.4.2.102 255.255.255.255 10.31.0.1 GigabitEthernet 0/0 1
ip domain name home
ip domain localhost msbr
pm sample-interval minute 5
pm sample-interval seconds 15
exit
```

This page is intentionally left blank.

6 CLI Voice Changes

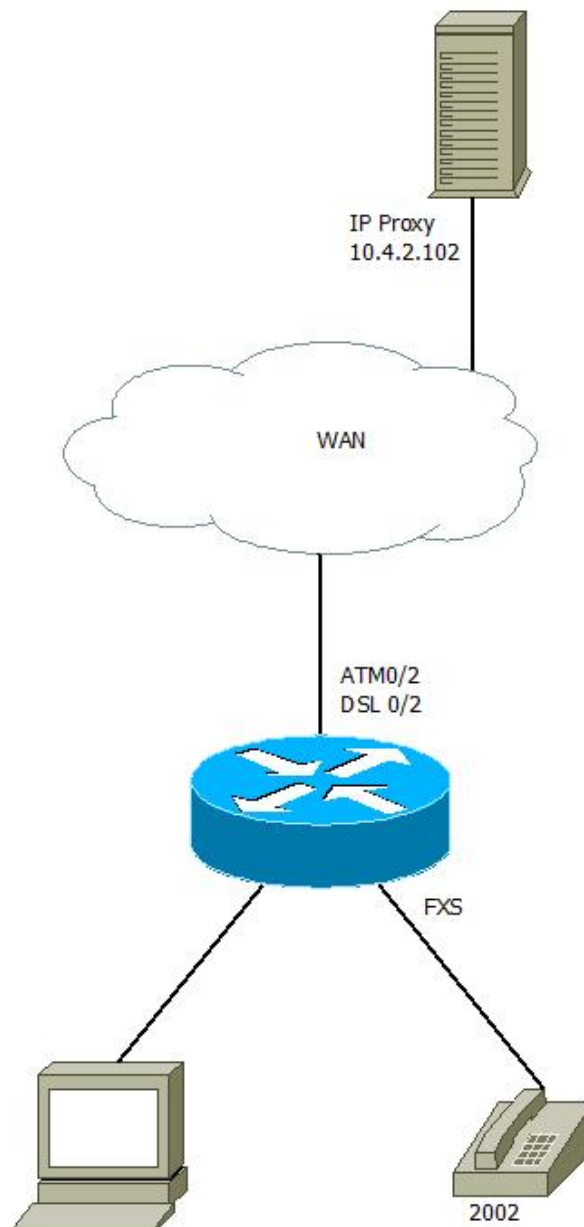
Most of CLI changes are in the Voice section. To keep the new version backward compatible, the old CLI commands can be pasted to the MSBR. However the TAB key will not complete partially written commands and the '?' won't display the old CLI commands.

The following section compares by sections, the changes in the CLI Voice commands. It is also recommended to review the *CLI Configuration Guide* to learn the new Voice commands.

6.1 Simple Voice Configuration Changes Example

In this configuration, the following topology is configured:

Figure 6-1: Configured Topology



In the following table, the left column lists Version 6.8 commands, and the right column lists the equivalent command in Version 7.2. Both configurations achieve the same goal. The table is arranged in the order of the Version 7.2 CLI script, while the Version 6.8 commands is in order as it appears in the output of the "show run" command.

Version 6.8	Version 7.2
<pre>configure voip</pre>	<pre>configure network</pre>
<pre>tls 0 name default tls-version unlimited ciphers-server "RC4:AES128" ciphers-client "RC4:DEFAULT" ocsp-server disable ocsp-port 2560 ocsp-default-response reject exit</pre>	<pre>tls 0 name default tls-version unlimited ciphers-server "RC4:AES128" ciphers-client "RC4:DEFAULT" ocsp-server disable ocsp-port 2560 dh-key-size 1024 ocsp-default-response reject exit</pre>
<pre>interface network-dev 0 name "vlan 1" activate exit</pre>	<pre>network-dev 0 name "vlan 1" activate exit</pre>
<pre>interface network-if 0 ip-address 192.168.0.2 gateway 192.168.0.1 name "Voice" primary-dns 192.168.0.1 underlying-dev "vlan 1" activate exit</pre>	<pre>interface network-if 0 ip-address 192.168.0.2 gateway 192.168.0.1 name "Voice" primary-dns 192.168.0.1 underlying-dev "vlan 1" activate exit</pre>
<pre>configure voip</pre>	<pre>configure voip</pre>
<pre>coders-and-profiles coders-group-0 0 name "g711Alaw64k" p-time 20 activate exit</pre>	<pre>coders-and-profiles audio-coders- groups 0 coders-group-name "AudioCodersGroups_0" activate exit coders-and-profiles audio-coders 0/0 name g711-alaw p-time 20 rate 64 activate exit</pre>
<pre></pre>	<pre>gateway trunk-group 0 trunk-group-id 1 first-b-channel 1 last-b-channel 1 first-phone-number "2002" module 2 activate exit</pre>

<pre>voip-network realm 0 name "MRWAN" ipv4if "WAN" port-range-start 6000 session-leg 256 port-range-end 8550 is-default true activate exit</pre>	<pre>realm 0 name "MRWAN" ipv4if "WAN" port-range-start 6000 session-leg 256 is-default enable activate exit</pre>
<pre></pre>	<pre>sbc routing sbc-routing-policy 0 name "Default_SBCRoutingPolicy" lcr-default-cost highest-cost activate exit</pre>
<pre>voip-network srd 0 name "SRDWAN" media-realm-name "MRWAN" activate exit</pre>	<pre>srd 0 name "SRDWAN" activate exit</pre>
<pre></pre>	<pre>message message-policy 0 name "Malicious Signature DB Protection" max-message-length -1 max-header-length -1 max-body-length -1 max-num-headers -1 max-num-bodies -1 send-rejection policy-drop method-list-type policy-blacklist body-list-type policy-blacklist signature-db-enable enabled activate exit</pre>
<pre>voip-network sip-interface 0 interface-name "SIPWAN" network-interface "WAN" activate exit</pre>	<pre>sip-interface 0 interface-name "SIPWAN" network-interface "WAN" media-realm-name "MRWAN" activate exit</pre>
<pre>voip-network proxy-set 0 proxy-name "" activate exit</pre>	<pre>proxy-set 0 proxy-name "ProxySet_0" gwipv4-sip-int-name "SIPWAN" activate exit</pre>
<pre>voip-network proxy-set 0 proxy-name "" activate exit</pre>	<pre>ip-group 0 name "Default_IPG" proxy-set-name "ProxySet_0" srd-name "SRDWAN" classify-by-proxy-set disable activate exit</pre>

<pre> gw hunt-or-trunk-group trunk-group 0 trunk-group-id 1 first-b-channel 1 last-b-channel 1 first-phone-number "2002" module 2 activate exit </pre>	<pre> gateway trunk-group-setting 0 trunk-group-id 1 channel-select-mode dst-phone- number activate exit </pre>
<pre> gw hunt-or-trunk-group trunk-group- setting 0 trunk-group-id 1 channel-select-mode dst-phone- number activate </pre>	<pre> gateway routing gw-routing-policy 0 lcr-default-cost highest-cost activate exit </pre>
<pre> gw routing ip2tel-routing 0 dst-phone-prefix "*" trunk-group-id 1 src-phone-prefix "*" activate exit </pre>	<pre> gateway routing ip2tel-routing 0 dst-phone-prefix "*" trunk-group-id 1 src-phone-prefix "*" activate exit </pre>
<pre> gw digitalgw rp-network-domains 1 name "dsn" activate exit gw digitalgw rp-network-domains 2 name "dod" activate exit gw digitalgw rp-network-domains 3 name "drsn" activate exit gw digitalgw rp-network-domains 5 name "uc" activate exit gw digitalgw rp-network-domains 7 name "cuc" activate exit gw digitalgw digital-gw-parameters answer-detector-cmd 10486144 energy-detector-cmd 587202560 activate exit </pre>	<pre> gateway digital settings answer-detector-cmd 10486144 energy-detector-cmd 587202560 activate exit gateway digital rp-network-domains 1 name "dsn" activate exit gateway digital rp-network-domains 2 name "dod" activate exit gateway digital rp-network-domains 3 name "drsn" activate exit gateway digital rp-network-domains 5 name "uc" activate exit gateway digital rp-network-domains 7 name "cuc" activate exit </pre>
<pre> gw analoggw authentication 0 user-name "2002" password F2JrfGgpQ2p/cQ== obscured activate exit </pre>	<pre> gateway analog authentication 0 user-name "2002" password F2JrfGgpQ2p/cQ== obscured activate exit gateway analog authentication 1 </pre>

	<pre> user-name "" activate exit gateway analog authentication 2 user-name "" activate exit gateway analog authentication 3 user-name "" activate exit gateway analog authentication 4 user-name "" activate exit gateway analog authentication 5 user-name "" activate exit gateway analog authentication 6 user-name "" activate exit gateway analog authentication 7 user-name "" activate exit </pre>
<pre> tdm pcm-law-select mulaw activate exit </pre>	<pre> media tdm pcm-law-select mulaw activate exit </pre>
<pre> media udp-port-configuration udp-port-spacing 10 activate exit </pre>	<pre> media rtp-rtcp udp-port-spacing 10 activate exit </pre>
<pre> voip-network proxy-ip 0 proxy-address "10.4.2.102" activate exit </pre>	<pre> proxy-ip 0/0 proxy-address "10.4.2.102" activate exit </pre>
	<pre> sbc malicious-signature-database 0 name "SIPVicious" pattern "Header.User-Agent.content prefix 'friendly-scanner'" activate exit sbc malicious-signature-database 1 name "SIPScan" pattern "Header.User-Agent.content prefix 'sip-scan'" activate exit sbc malicious-signature-database 2 </pre>

```

name "Smap"
pattern "Header.User-Agent.content
prefix 'smap'"
activate
exit
sbc malicious-signature-database 3
name "Sipsak"
pattern "Header.User-Agent.content
prefix 'sipsak'"
activate
exit
sbc malicious-signature-database 4
name "Sipcli"
pattern "Header.User-Agent.content
prefix 'sipcli'"
activate
exit
sbc malicious-signature-database 5
name "Sivus"
pattern "Header.User-Agent.content
prefix 'SIVuS'"
activate
exit
sbc malicious-signature-database 6
name "Gulp"
pattern "Header.User-Agent.content
prefix 'Gulp'"
activate
exit
sbc malicious-signature-database 7
name "Sipv"
pattern "Header.User-Agent.content
prefix 'sipv'"
activate
exit
sbc malicious-signature-database 8
name "Sundayddr Worm"
pattern "Header.User-Agent.content
prefix 'sundayddr'"
activate
exit
sbc malicious-signature-database 9
name "VaxIPUserAgent"
pattern "Header.User-Agent.content
prefix 'VaxIPUserAgent'"
activate
exit
sbc malicious-signature-database 10
name "VaxSIPUserAgent"
pattern "Header.User-Agent.content
prefix 'VaxSIPUserAgent'"
activate
exit
sbc malicious-signature-database 11
name "SipArmyKnife"
pattern "Header.User-Agent.content
prefix 'siparmyknife'"
activate
    
```

	<pre>exit</pre>
<pre>ldap ldap-search-server-method sequentialy activate exit</pre>	<pre>sip-definition settings ldap-primary-key "telephoneNumber" activate exit</pre>
<pre>sip-definition proxy-and- registration authentication-mode per-endpoint enable-proxy use-proxy enable-registration on activate exit</pre>	<pre>sip-definition proxy-and- registration authentication-mode per-endpoint enable-proxy use-proxy enable-registration on activate exit</pre>

International Headquarters

1 Hayarden Street,
Airport City
Lod 7019900, Israel
Tel: +972-3-976-4000
Fax: +972-3-976-4040

AudioCodes Inc.

27 World's Fair Drive,
Somerset, NJ 08873
Tel: +1-732-469-0880
Fax: +1-732-469-2298

Contact us: www.audiocodes.com/contact

Website: www.audiocodes.com

©2017 AudioCodes Ltd. All rights reserved. AudioCodes, AC, HD VoIP, HD VoIP Sounds Better, IPmedia, Mediant, MediaPack, What's Inside Matters, OSN, SmartTAP, User Management Pack, VMAS, VoIPerfect, VoIPerfectHD, Your Gateway To VoIP, 3GX, VocaNom, AudioCodes One Voice and CloudBond are trademarks or registered trademarks of AudioCodes Limited. All other products or trademarks are property of their respective owners. Product specifications are subject to change without notice.

Document #: LTRT-23304

