

# Meet the Teacher

## Year 3



# Staff Working in Year 3 and Roles

**Mrs Parry – Class teacher 3P**

**Miss Goodall – Class teacher 3G**

**Mr Whymant - Teaching Assistant 3P**

**Miss Fairhurst-Teaching Assistant 3G**

**Mr Lawson- Music**

**Mrs Crossley – PE**

**Mr Barron - Spanish**

# LONG TERM PLAN

	<b>Autumn 1</b>	<b>Autumn 2</b>	<b>Spring 1</b>	<b>Spring 2</b>	<b>Summer 1</b>	<b>Summer 2</b>
<b>English</b>	Traditional tales and fables  Persuasion	Instructions Poems with Structure - limericks	Author's style Biography	Explanation Take one poet – poetry appreciation	Adventure stories Recount	Newspaper report Poems with structure – haiku, <u>tanka</u> and kennings
<b>Numeracy</b>	Number: Place Value Addition	Number: Subtraction Multiplication and Division	Number: Multiplication and Division Measure: Money Statistics	Measurement: Length and perimeter Number : Fractions	Number: Fractions Measurement: Time Geometry: Properties of Shapes	Geometry: Properties of Shapes Measurement: Mass and Capacity
<b>Science</b>	Rocks	Light	<u>Animals including Humans</u> <ul style="list-style-type: none"> <li>• Skeleton and Movement</li> <li>• Health and Nutrition</li> </ul>		Plants	Forces and Magnets
<b>Computing</b>	Information Technology	Digital Creativity	Online Safety	Data Handling	Digital Literacy	Computer Science
<b>History</b>	Stone- Age		Ancient Egypt		Ancient Romans	
<b>Geography</b>		Mapping it Out		Travel Agents		Ground Force

# LONG TERM PLAN

<b>Art &amp; DT</b>	Art Printing – Natural Objects Francis Sam <u>Lembark</u>	DT Construction – Photograph frames	Art Drawing - Charcoal Jim Dine	DT Food - Biscuits	Art Collage - Nature Andy Goldsworthy	DT Materials – Flying Kites
<b>R.E.</b>	What do Hindus believe God is like?	Harvest	Exploring the sadness and joy of Easter	Jesus The Man Who Changed Lives	What rules should we follow?	
<b>P.E.</b>	Rugby Football	Dance	Orienteering Hockey	Gymnastics	Striking and fielding	Athletics
<b>Music</b>	Harvest	Christmas	iPad Orchestra	Easter	Ancient Romans	Ground Force
<b>PSHE</b>	Core skills	Anti-bullying	Keeping safe	Healthy lifestyles	It's Ok to tell	Economic well- being and financial capacity
<b>MFL</b>	Spanish		Spanish		Spanish	
<b>Trips &amp; Visits</b>			Bolton Museum - Egypt		Chester - Romans	

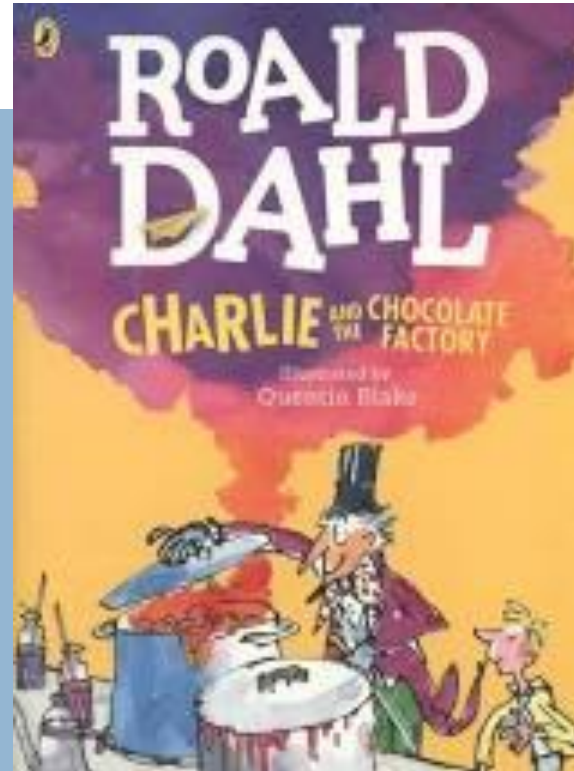
# Our Year 3 English Learning

In Year 3 we will be reading lots of amazing books like 'The Snow Queen' by Hans Christian Andersen, 'Charlie and the Chocolate Factory' by Roald Dahl and 'Escape from Pompeii' by Christina Balit.

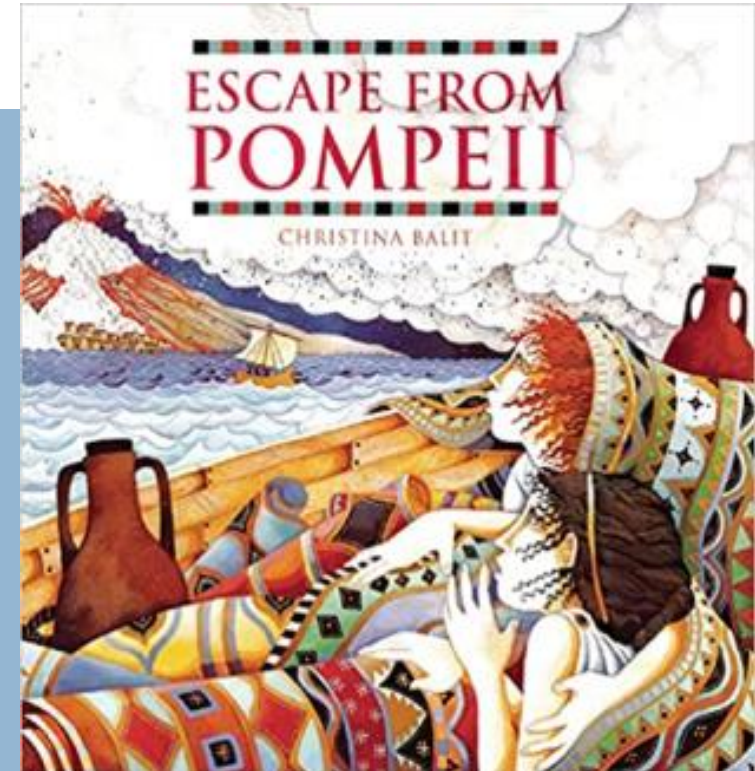
## Autumn Term



## Spring Term



## Summer Term



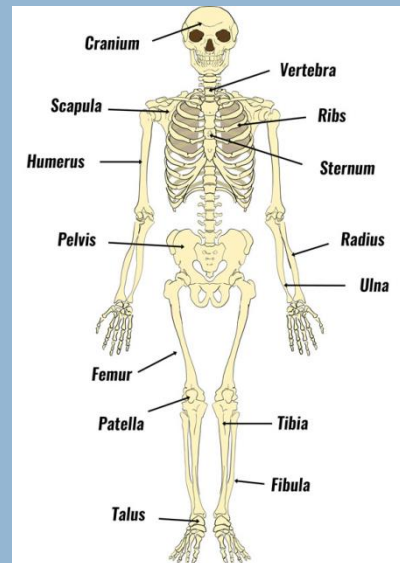
# Our Year 3 Science Learning

In Science we will be learning about rocks, light, animals including humans, plants and forces and magnets

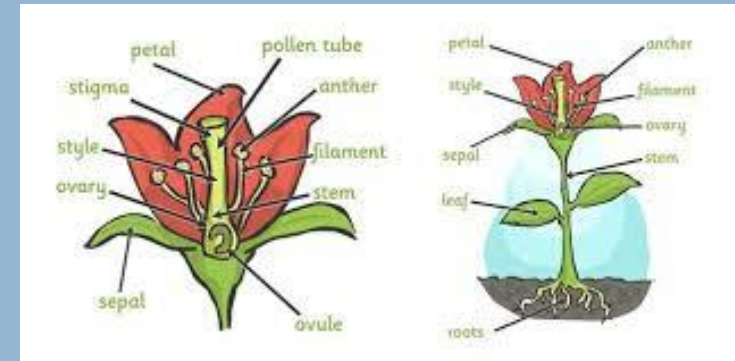
## Autumn Term



## Spring Term



## Summer Term





# Our Year 3 History Learning

**In History we will be learning about the Stone Age, The Egyptians and the Romans.**

## **Autumn Term**

**Our first History topic is The Stone Age**



## **Spring Term**

**In our second History topic, we will study The Ancient Egyptians.**



## **Summer Term**

**Finally, we will study The Romans.**



# Our Year 3 Geography Learning

**Our first Geography topic, is called 'Mapping it out'.**

**Next, we will be studying Europe in our unit called 'Travel Agents'.**

**And our final topic we will be studying a unit called 'Ground Force.'**

## **Autumn Term**



## **Spring Term**



## **Summer Term**





# Year 3 Weekly Timetable

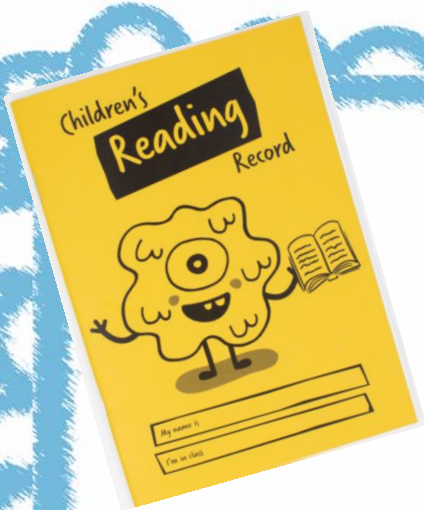
**PE –Monday mornings.** Children are to come dressed in their PE kit and will wear it the whole day.

**Spellings –** the test will take place on Wednesday, and new words will go home that day too

**Homework –** to be handed in each Wednesday, when it will then be sent back ready to complete the next challenge.

**Times Table Facts –** Practice daily in the homework book or TTrackstars or Purple Mash

**Hygiene –** the children regularly clean their equipment and learning spaces throughout the day and are reminded to use the hand sanitizer.



# Reading at Tonge Moor



## We are **Striving for Five** reads a week!

- Your child should aim to read at least **five times a week**; they have all been given a book to match their reading ability, which they take home each day;
- They should read to an adult or older sibling and have their record signed to show this has happened;
- Children bring in their reading records every day to school and place them in the white box when entering the classroom;
- A member of staff will check and sign the record;
- If a child needs to change their book, they can do so by using the home-reader library in their own class. Older children can do so by themselves;
- Reading at home helps to support the development of the reading skills being taught at school, because...

**“If you are going to get anywhere in life you have to read a lot of books”** *(Roald Dahl).*

- Reading is celebrated in our Friday assemblies by awarding certificates. If your child receives a certificate, they are invited to come to the library the following Friday, bringing an adult from home to join them.

**WE LOVE READING!**



# Homework

- **Spellings – Spellings will be sent home every Wednesday. Please practise these with your child ready to be tested the following Wednesday. A paper copy will be sent home with your child. If your child achieves full marks in their spelling test, they will be rewarded.**
- **Mathematics –Children will be given a weekly Mathematics homework. This will be given out on Wednesday. Children will be expected to complete 5 minutes of this 3 times per week.**
- **Homework Challenge – Each half term, your child will be sent home with a range of challenges from different curriculum areas to complete across the half term. We advise that you complete one challenge per week. These tasks can be completed in your child’s homework book or posted on Class Dojo.**



# School Website



← → ↻ https://tongemooracademy.org




- Home
- Covid 19
- Admissions & Virtual Tour
- Achievements
- Curriculum
- Parents
- Pupils
- School Information
- Contact



- Prospectus
- Letters Home
- Latest Newsletter
- The School Day
- Staying Safe Online
- Uniform**
- Wrap Around Care
- School Holidays 2021/22
- Class Assemblies
- SEN Info Report for Parents
- Holiday Request Form
- New Parents Meeting- Reception



# POLICIES





TONGE MOOR  
PRIMARY ACADEMY

ST BEDE COFE PRIMARY  
MULTI ACADEMY TRUST

Welcome to our school. Our school values are- Trust,

Home Covid 19 Admissions & Virtual Tour Achievements Curriculum Parents Pupils School Information Contact

Head of School's Welcome  
Governors  
St Bede CofE Primary MAT  
Meet the Team  
**Policies & Key Information**  
SEND  
Catering  
Friends of Tonge Moor  
ECO Council  
Swimming  
Seasonal Events  
Charity



<https://tongemooracademy.org/policies>



# POLICIES

The screenshot shows a web browser window with the URL <https://tongemooracademy.org/policies>. The page header features the school's name, "TONGE MOOR PRIMARY ACADEMY", and the logo for "ST BEDE C OF E PRIMARY MULTI ACADEMY TRUST". A navigation menu includes links for Home, Covid 19, Admissions & Virtual Tour, Achievements, Curriculum, Parents, Pupils, School Information, and Contact. The main content area is titled "Policies" and lists 25 individual policy documents, each with a folder icon.

## Policies

- Acceptable Use
- Accessibility
- Administration of Medicines
- Anti-Bullying
- Assessment
- Attendance
- Behaviour
- Complaints Policy
- Curriculum Policy
- Drugs
- Educational Visits
- Equal Opportunities
- First Aid
- Growth & Change
- Handwriting
- Health & Safety
- Homework
- Pest Control
- Marking
- Online Safety
- Playground
- Prevent
- PSHE
- Pupil Privacy Notice
- RE
- Reading
- Remote Learning
- Safeguarding
- SEN Policy
- Single Equalities
- Target Settings
- Teaching & Learning
- Uniform
- Whistleblowing
- Worship

# Uniform (including PE kits)

## **School Uniform:**

### **Nursery – Year 5 children:**

**Purple crew neck sweatshirt/jumper/cardigan;**

**Pale blue polo t-shirt or shirt;**

**Grey skirt/pinafore dress/grey school trousers;**

**White/grey socks or tights;**

**Flat sensible black school shoes/black trainers (plain black with no coloured logos or soles) – no boots;**

**in winter, children can keep wellington/weather proof boots, for wearing outdoors, in a bag on their peg to wear outdoors on rainy/snowy days;**

**in summer, purple gingham dress/ grey shorts – no playsuits, culottes or skorts;**

**Small, purple hair ornaments can be worn (clips, headbands);**

**School book bag.**

### **For PE (Nursery – Year 6 children):**

**Pale blue t-shirt;**

**Black PE shorts;**

**Black plimsolls;**

**Gym bag to keep these in at school;**

**School logo joggers/plain black joggers, school sweatshirt**

**Uniform items with school badge are available from: Whittaker's (School Outfitters) Deansgate, Bolton and Smart Clothing, Blackhorse St, Bolton**

**No jewellery is to be worn at all. This includes stud earrings, as many accidents and problems have arisen in the past.**

**Please note that no child of primary school age should have their hair cut in a severe fashion, or with lines/patterns, nor should they have it dyed or highlighted.**

**do not allow your child to wear nail polish. We encourage our children to enjoy their childhood, and put education before fashion.**



# Home Learning

## **Class Dojo**

- **Class Dojo will be used regularly throughout the year for updates.**
- **Class Dojo can be used for your child's home learning.**
- **Please feel free to post pictures of any exciting experience you have for us to see and share with the class.**
- **Both parent and child's login for Class Dojo will be the same as last year.**

# Behaviour - Rewards and Sanctions

## **Ready to learn**

**Children's behaviour will be monitored and rewarded using our 'Ready to Learn' system. If they demonstrate the school values at any point during the day they will move up the chart. If they consistently demonstrate outstanding behaviour during the day, they will be entered into a daily prize draw. If a child does not follow our school values or behaviour expectations, then their name moves down. In some instances, a phone call home will be made to discuss the child's behaviour.**

## **Class Dojo**

**Children will receive a dojo for demonstrating our school values.**

# Behaviour - Rewards and Sanctions

## Behaviour & Motivation Policy

### General aims

- 1. To provide a happy atmosphere**
- 2. To strengthen children's interest in learning**
- 3. To allow for personal achievement and satisfaction**
- 4. To foster a sense of pride in attending the school and in taking full advantage of the opportunities offered to learn**

**The fundamental principle that underpins our whole approach to school behaviour is that no-one has the right to prevent another child from learning or a teacher from teaching. The general standard of behaviour in school has to be the collective responsibility of the whole staff.**

**Ownership of rules is given to the children in the first week of the academic year, when the teachers and children collaboratively write the school golden rules. These golden rules are displayed throughout the school and referred to as and when appropriate.**



# Behaviour - Rewards and Sanctions

## Staff responsibilities

- **to treat all children fairly and with respect;**
- **to raise children's self-esteem and develop their full potential;**
- **to provide a challenging, interesting and relevant curriculum;**
- **to create a safe and pleasant environment, physically and emotionally;**
- **to encourage independence and self-discipline;**
- **to use rules and sanctions clearly and consistently;**
- **to act as good role models;**
- **to form positive relationships with parents and carers;**
- **to recognise that children are individuals and to be aware of their needs;**
- **to offer a framework for social education;**

# Behaviour - Rewards and Sanctions

## **Parents and carers' responsibilities (to be shared with all parents at the beginning of the academic year)**

- **set a good example to their children at all time, demonstrating how to get along with all members of the school and the wider community.**
- **treat all members of the school community with respect**
- **to make children aware of appropriate behaviour in all situations;**
- **to encourage independence and self-discipline;**
- **to make sure that their children arrive on time, in appropriate clothing for the weather, and make sure that they are collected on time;**
- **to get their children to bed and asleep at a reasonable time so that they are fresh for school the next day;**
- **to show an interest in all that their child does at school;**
- **to foster good relationships with the school;**
- **to support the school in the implementation of this policy.**

**(Please note that incidents of rudeness and/or threatening behaviour will not be tolerated and will be logged with the Department of Education)**

# Packed Lunches and Water Bottles

## Lunch Bags

**Lunch bags must be clearly labelled with the child's name and class. Packed lunches must support our healthy eating policy, which means it should support a healthy, balanced diet. Chocolate bars, sweets and fizzy drinks are not allowed.**

## Water Bottles

**Children should bring a reusable plastic bottle of water with their name clearly labelled. (Only water is allowed.) If children do not bring a bottle of water to school, they will not be able to get a drink in class time due to limiting the sharing of resources such as cups and water fountains.**





**Every child is unique and many at some time during their school career may have additional needs. Here at Tonge Moor Primary School, we have experience of supporting children with a variety of special requirements ranging from speech & language, ADHD, autism, sensory impairment, medical conditions and specific learning difficulties. Through careful planning, we ensure that all children access a high quality broad and balanced curriculum in which their social and emotional needs are also a priority.**

If you have any concerns regarding any aspect of your child's development, please speak initially to your child's class teacher. Further discussions with the SENCO, Mrs Cassandra Allen, may then be arranged, depending on the nature of the concern.

**[SENCO@TONGEMOORPRIMARYACADEMY.ORG](mailto:SENCO@TONGEMOORPRIMARYACADEMY.ORG)**

## COMMUNICATING WITH SCHOOL

- **Phone number (school office) – 01204 328994**
- **We are currently in the process of setting up a new parent app**
- **You can send a message via Class Dojo**
- **Appointments / Absences**
- **Speak to teachers**



# Questions

**Any Questions**

# Parents



**Thank you for your continuing support. We are looking forward to working with you to support your child's learning journey.**

*Thank you!*