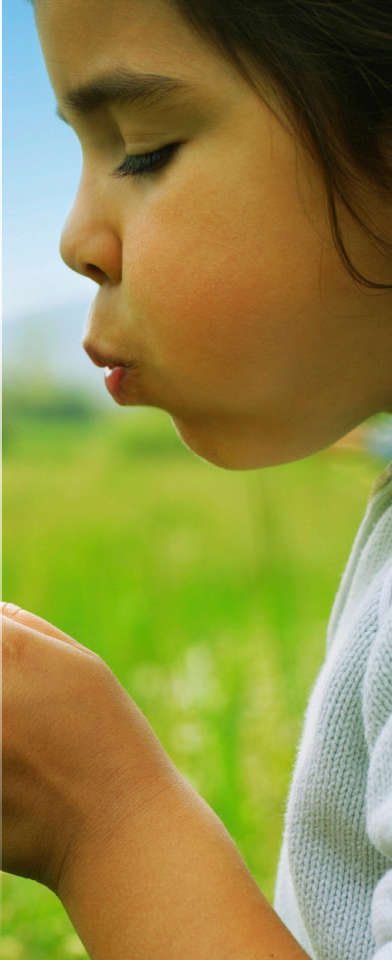


# Meeting the Needs of Our Community

Helping Critical Access  
Hospitals address ICD-10

Jvion | 2012



## *From our Clients*

*“Our facility was able to move from the ‘how to’ stage in the implementation process of ICD-10 to the hands on management process in a relatively short period of time. This change in processing and optimizing was possible because of JVION’s comprehensive ICD-10 assessment. Their involvement and ownership of the project was just what a specialty clinic needs to get the edge on a consuming process such as ICD-10. There would have been several avenues that our facility could have tried and ended up still unsure of the results and impact for our facility, JVION’s assessment gave us the tools we needed to invest in setting up our facility for success well before the ICD-10 deadline.”*

*~ John Rau, President & CEO  
Critical Access Hospital located in the Midwest*



## Table of Contents

A Mandated Challenge.....	1
Critical Care for CAHs.....	2
Critical Care ICD-10 Assessment Services.....	5
Critical Care ICD-10 Conversion Services.....	7
Critical Care ICD-10 Post-conversion Services.....	9

## *From our CEO*

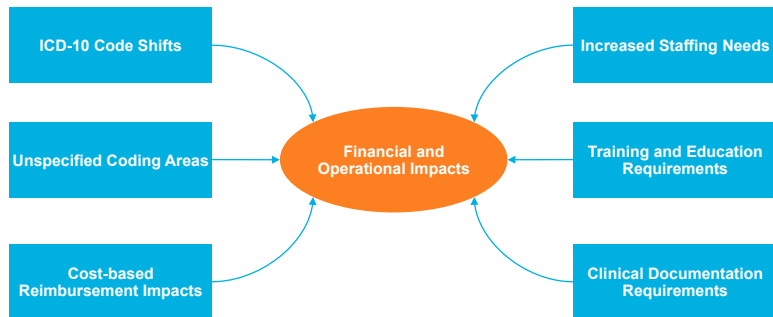
*“Critical Access Hospitals are the center of care for so many communities. Developing solutions to meet their needs and help them remain compliant with mandated change is an important part of what Jvion does. We are privileged to serve Critical Access Hospitals across the nation and continue to develop solutions for this important segment of the healthcare industry.”*

- Shantanu Nigam, CEO  
Jvion

## A Mandated Challenge

Critical Access Hospitals (CAHs) face unique challenges. They do not have disposable cash in their reserves; it is difficult to attract and retain highly qualified physicians; and regulatory requirements are pushing CAHs to spend time and money that they don't have to meet mandated compliance dates.

With the ICD-10 conversion deadline on the horizon, CAHs are looking for ways to cut conversion cost, timeline, and resource needs. While the mandated conversion has a smaller impact and poses a lower overall liability to CAH revenues, there are still potential risks that must be addressed to avoid operational and financial impacts.



To meet the ICD-10 challenge, CAHs should look to software-enabled solutions that provide the kind of automation needed to reduce constraints and mitigate the risks created by the mandate.

## Critical Care for CAHs

To support CAHs through all aspects of ICD-10, Jvion developed **Critical Care ICD-10**. This solution is focused on delivering value, reducing resource demands, and addressing ICD-10's risk at every step in the conversion process.

Supported by **icdcomplete**—the most complete end-to-end ICD-10 remediation tool on the market—**Critical Care ICD-10** is tailored to provide:

- A 2-4 week assessment that will help *prioritize efforts and reduce overall conversion cost*
- A conversion that relies on automation and mapping technology to *reduce the demands on resources and the overall timeline*
- *Affordable software services* to support post-conversion needs





### **Critical Care ICD-10 Assessment Services:**

- Drive visibility into ICD-10 revenue impacts
- Deliver a robust conversion plan
- Identify areas in ICD-9 where unspecified coding is used
- Deliver possible mappings to address unspecified codes
- Deliver a training and education plan tailored to the physicians, coders, and staff most impacted by the conversion
- Identify the areas at highest risk for productivity impacts as a result of increased effort



### **Critical Care ICD-10 Conversion Services:**

- Help reduce conversion budget and timeline by up to 50%
- Drive automation into all aspects of the conversion process
- Reduce the reliance on CAH business and IT resources
- Include an advanced, extended crosswalk builder that includes a data-mined set of mappings to go beyond the CMS General Equivalence Mappings (GEMs)
- Provide powerful and advanced rule authoring capabilities



### **Critical Care ICD-10 Post-conversion Services:**

- Provide custom crosswalks built around Jvion's GEMs+ mapping set that includes an advanced, data-mined set of mappings
- Support business decisions and rule authoring
- Deliver contingency and ongoing dual coding support





## Critical Care ICD-10 Assessment Services

Through Jvion's Critical Care ICD-10 Assessment, we leverage the experience and insight gained from serving large inpatient and outpatient organizations, and other CAHs to drive a detailed view into ICD-10 impacts.

This solution helps prioritize system and code conversion efforts thereby reducing demands on resources. It also helps better prepare overall workforce, operations, and finance teams for the upcoming conversion by targeting training and education efforts to those areas with the highest need.

### Data Gathering

Obtain 12-24 month's historical claims data including:

- Inpatient and outpatient claims data
- Coding data along with:
  - Admit diagnosis/procedure codes
  - Discharge diagnosis/procedure codes
  - Cost reports
  - Provider/doctor data
  - Service line and lines of business data

### ICD-10 Code Mapping and Translation Analysis

Run iTranslate—a code conversion and translation tool within

**icdcomplete**—to analyze:

- Current ICD-9 code usage for unspecified codes
- Mappings to ICD-10 that are unspecified
- Sample Analytics
- 1:1 and 1:many mappings from ICD-9 to 10 using the 2012 CMS GEMs Current diagnosis/procedure codes
- Relevant cost reports

### Analytics and Assessment Review

- *Unspecified Codes Findings*—a detailed analysis of unspecified codes
- *Translation Analysis*—a detailed list of the 1:1 and 1:many mappings by doctor and department
- *Physician and Coder Training Priorities*—a listing of physicians who pose the highest risk to reimbursements and a prioritized list of codes to help with training and documentation plans
- *Productivity Analysis*—a detailed analysis of resourcing needs and areas for potential operational improvements

Through our Critical Care ICD-10 Assessment, we deliver the kind of detailed insights that have only been available to large providers at a high dollar cost including:

### **Code Mapping and Translation Analysis (Inpatient and Outpatient):**

- Unspecified code analysis across service lines, doctors/coders
- Complete report of all unspecified codes that are used
- Current coding patterns where other specific coding alternatives exist
- Areas that can be targeted for clinical documentation improvement
- Translation mapping reports
- Translation analysis by service codes and doctor

- Targeted areas of improvement and ICD-10 translation addressed towards high priority service lines and doctors

### **Productivity Impact Analysis**

- Count of impacted FTEs and roles by all divisions
- Organizational resource and backfill plan

### **Physician and Coder Training and Education Analysis**

- Physician and coder training areas prioritized by doctor and service lines
- Recommended training plan by role

The image displays several overlapping spreadsheets representing ICD-10 code analysis reports. The visible reports include:

- Unspecified Codes by Doctor:** A table with columns for 'ICD-10 Code', 'Description', and 'Doctor'. It lists various unspecified codes and the doctors associated with them.
- ICD-10 Translation Analysis:** A table showing the mapping of unspecified codes to specific ICD-10 codes. It includes columns for 'Unspecified Code', 'Translated Code', and 'Description'.
- Breakdown by Doctor (Non 1:1 mapping):** A table showing the distribution of unspecified codes across different doctors, highlighting areas where a single doctor has multiple unspecified codes.

## Critical Care ICD-10 Conversion Services

**icdcomplete** offers the kind of automation CAHs need to reduce the constraints and demands that the conversion will place on resources at a price point that only a software as a service (SaaS)/cloud-based model can provide.

Leveraging the capabilities within the suite, we deliver the Critical Care ICD-10 Conversion—a powerful solution that:

- Automates testing including test case generation, claims testing, and test data generation
- Provides advanced IT capabilities including enterprise crosswalks,

automated system scans for ICD impacts, and system neutralizer

- Includes a full suite of project management tools including detailed reports and project dashboards

**icdcomplete** is the only remediation solution on the market that has helped reduce conversion length and cost by 30-50%.



The complete **icdcomplete** includes:



**iQ:** pre-build, online survey questionnaire



**Impact Assist Module:** organizational impact modeler



**iAnalyze:** automated impact analysis tool



**iConvert:** automated system conversion tool



**iDecide:** decision support tool



**iSimulate:** historical claims reimbursement simulator



**Neutralizer:** contingency and dual coding support tool



**iQA:** testing management suite



**iTranslate:** code translation tool



**iWalk:** custom crosswalk builder

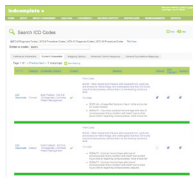
*Because **icdcomplete** is available as a service, a CAH can purchase licensing to any of its capabilities. This approach provides the flexibility and affordability that having an automated ICD-10 conversion solution on demand provides.*

## Critical Care ICD-10 Post-conversion Services

**icdcomplete** was developed to include the functionality necessary to support hospitals after the mandated conversion date including a custom crosswalk builder, decision support tool, and code neutralizer.

### Crosswalk Builder

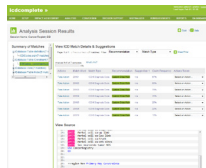
To help CAHs leverage the power of ICD-9 to ICD-10 crosswalks, we developed iWalk—an advanced and extended crosswalk builder. iWalk is built around our GEMs+ mapping set, which includes an advanced, data-mined set of mappings



designed to take advantage of the valuable information in the CMS GEMs while enriching it with clinical concepts. The result is a tool that helps providers derive a more meaningful, base-lined mapping set.

### Decision Support Support for ongoing business rule

authoring and maintenance is provided through iDecide—a powerful, dynamic rule authoring capability. iDecide allows users to choose the appropriate domain and author a rule in meaningful terms. Its rich interface then selects attributes in the domain and links them to the correct

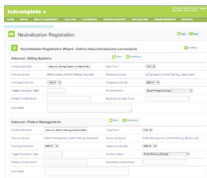



'and/or/ if/else' statements. These rules are automatically executed when the crosswalk mappings are invoked. Additionally, custom rules can be created easily to represent your medical policy attributes, clinical settings, and financial/ reimbursement settings.

### **Code Neutralizer**

We prepare CAHs for the unexpected through our risk mitigation solution that helps you plan for contingency situations.

Using our proprietary iNeutralizer technology, we will keep your business running smoothly even after the mandated conversion date.





For more information on Jvion's CAH Critical Care ICD-10 solutions or any of our ICD-10 conversion offerings, please visit our website at [www.jvion.com](http://www.jvion.com) or e-mail us at [contact@jvion.com](mailto:contact@jvion.com).

Jvion LLC | Atlanta, GA | Darien, CT | Phone: 203.202.1616  
Fax: 203.621.3365 | E-mail: [contact@jvion.com](mailto:contact@jvion.com) | Web: [www.jvion.com](http://www.jvion.com)  
© 2012 All rights reserved