

meetings & special events



overview

AMWAY GRAND PLAZA HOTEL

- *Over 47,000 square feet of function space*
- *Meeting accommodations for 12 to 1,200 guests*
- *Adjacent to DeVos Place Convention Center, which has an additional 250,000 square feet of meeting and exhibit space, as well as a 2,400-seat auditorium*

DEVOS PLACE CONVENTION CENTER

- *162,000-square-foot Class A Exhibition Hall*
- *Exhibition Hall which can accommodate 865, 10'x10' exhibit booths*
- *40,000-square-foot flexible-use ballroom*
- *35,000-square-feet of subdividable meeting space*
- *75-foot-high glass-enclosed "Grand Gallery"*
- *Skywalk linking convention guests to the Amway Grand Plaza Hotel and 12,000-seat Sports/Entertainment Arena*
- *12 enclosed loading docks*
- *700-space underground parking deck*
- *7,000 additional parking spaces within a five-minute walk*

amway grand plaza

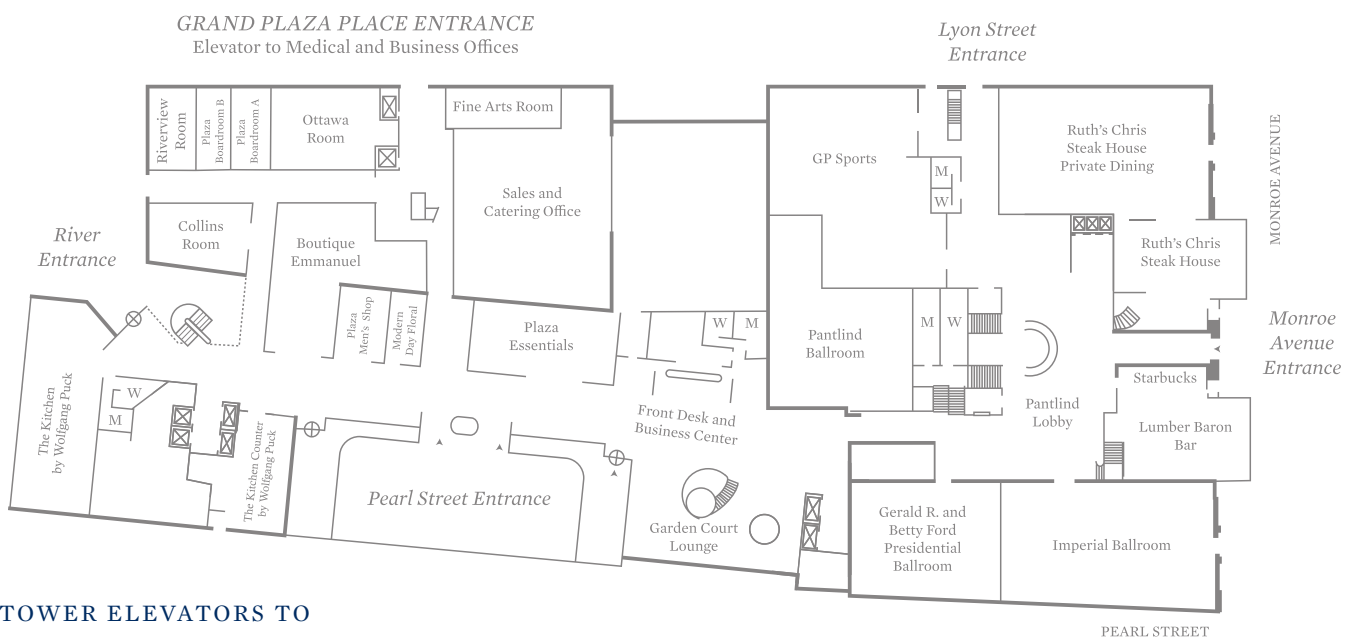
	Dimension (l' x w')	Ceiling Height	Square Footage	Theater Style	Classroom	Reception (standing)	Banquet (tables for 10)
CONCOURSE LEVEL—2ND FLOOR							
AMBASSADOR BALLROOM	125x70	16	8,750	1,100	600	1,150	720
AMBASSADOR BALLROOM WEST	62x70	16	4,375	500	260	550	350
AMBASSADOR BALLROOM EAST	62x70	16	4,375	500	260	550	350
CAMPAU ROOM	23x14	9	329	25	16	40	20
DIAMOND ROOM	19x15	10	292	NA	NA	NA	10
EMERALD ROOM	57x37	9	2,138	220	120	224	150
EMERALD ROOM A	24x37	9	900	90	48	100	70
EMERALD ROOM B	33x37	9	1,238	100	56	100	70
IMPERIAL BALLROOM (Main)	56x55	8–30	3,300	190	100	300	180
IMPERIAL BALLROOM (Mezzanine)	56x10–15	15	1,800	NA	NA	80	60
LYON ROOM	18x16	9	296	16	12	35	10
PEARL ROOM	38x29	10	1,132	110	58	110	60
GOVERNOR'S ROOM	79x37	10	2,923	270	168	325	210
ROBINSON ROOM	29x13	9	434	30	20	50	30
RUBY ROOM	32x19	10	625	40	31	50	30
SENATOR VANDENBERG ROOM	94x35	10	3,290	290	187	350	230
SENATOR VANDENBERG ROOM A	47x35	10	1,645	140	74	175	100
SENATOR VANDENBERG ROOM B	47x35	10	1,645	140	74	175	100

	Dimension (l' x w')	Ceiling Height	Square Footage	Reception Capacity
CONCOURSE/FOYER AREAS—2ND FLOOR				
CENTER CONCOURSE (Ambassador Ballroom East)	95x55	18	5,225	700
CROWN FOYER (Ambassador Ballroom)	125x27	16	3,437	500
EAST CONCOURSE (Pantlind Ballroom)	93x19	12	1,767	200
NORTH CONCOURSE (Governor's Room & Vandenberg Room)	62x21	10	1,302	100
REGISTRATION AREA (Counters, Storage, and Coat Check)		10		NA

Average dimension; non parallel walls. Reception and registration areas are adjacent to and connect with the banquet and meeting rooms in parentheses.

	Dimension (l' x w')	Ceiling Height	Square Footage	Theater Style	Classroom	Reception (standing)	Banquet (tables for 10)
CONFERENCE LEVEL—3RD FLOOR							
BERKEY ROOM	35x26	8.5	910	62	40	115	60
GRAND VIEW ROOM	78x23	8.5	1,821	165	96	225	130
GRAND VIEW ROOM A	36x26	8.5	940	80	48	115	60
GRAND VIEW ROOM B	23x22	8.5	506	45	24	60	30
GRAND VIEW ROOM C	17x22	8.5	375	30	22	45	20
HALDANE ROOM	47x25	8.5	1,175	100	54	150	80
HERITAGE HILL ROOM	40x30	8.5	1,220	65	42	125	70
KENDALL ROOM	34x30	8.5	1,165	60	40	130	70
NELSON ROOM	33x24	8.5	792	58	40	100	60
PULLMAN ROOM	22x16	8.5	385	36	21	50	30
THORNAPPLE ROOM	41x24	9	1,005	80	48	90	70
WINCHESTER ROOM	25x24	8.5	701	50	35	90	50
WEST TOWER							
29TH FLOOR PINNACLE ROOM	29x31	10	835	40	40	40	40
26TH FLOOR ROTUNDA	26x25	9	650	40	30	70	40
LOBBY LEVEL—1ST FLOOR							
GERALD R. FORD AND BETTY FORD PRESIDENTIAL BALLROOM	45x45	20	2,025	220	130	250	160
PANTLIND BALLROOM	75x46	35	3,450	400	224	500	290
PANTLIND FOYER	45x13	8	585	NA	NA	70	40
FINE ARTS ROOM	28x16	8.5	448	NA	NA	NA	NA
OTTAWA ROOM	29x38	8.5	1,100	72	36	125	70
RIVERVIEW ROOM	29x17	8.5	493	48	30	50	40
PLAZA BOARDROOM A	29x14	8.5	406	38	23	38	30
PLAZA BOARDROOM B	18x13	8.5	235	15	8	15	10
ATRIUM LEVEL—LOWER LEVEL							
ATRIUM ROOM	54x37	9	1,998	220	130	250	150

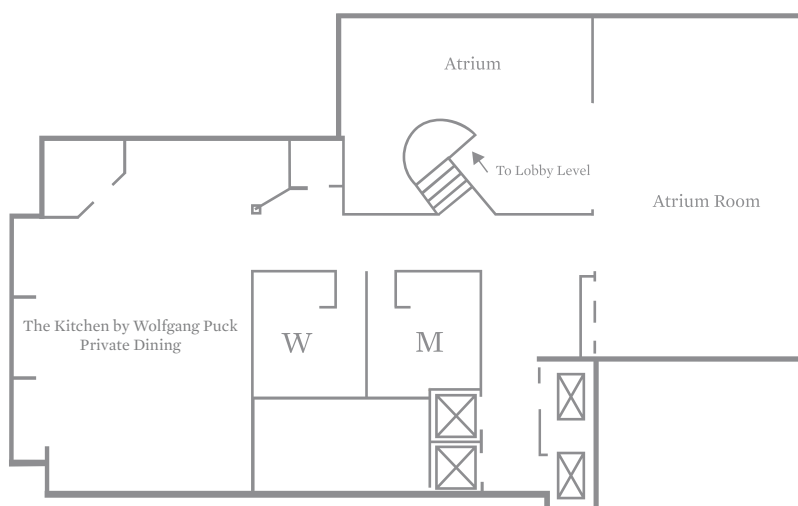
LOBBY LEVEL—1ST FLOOR



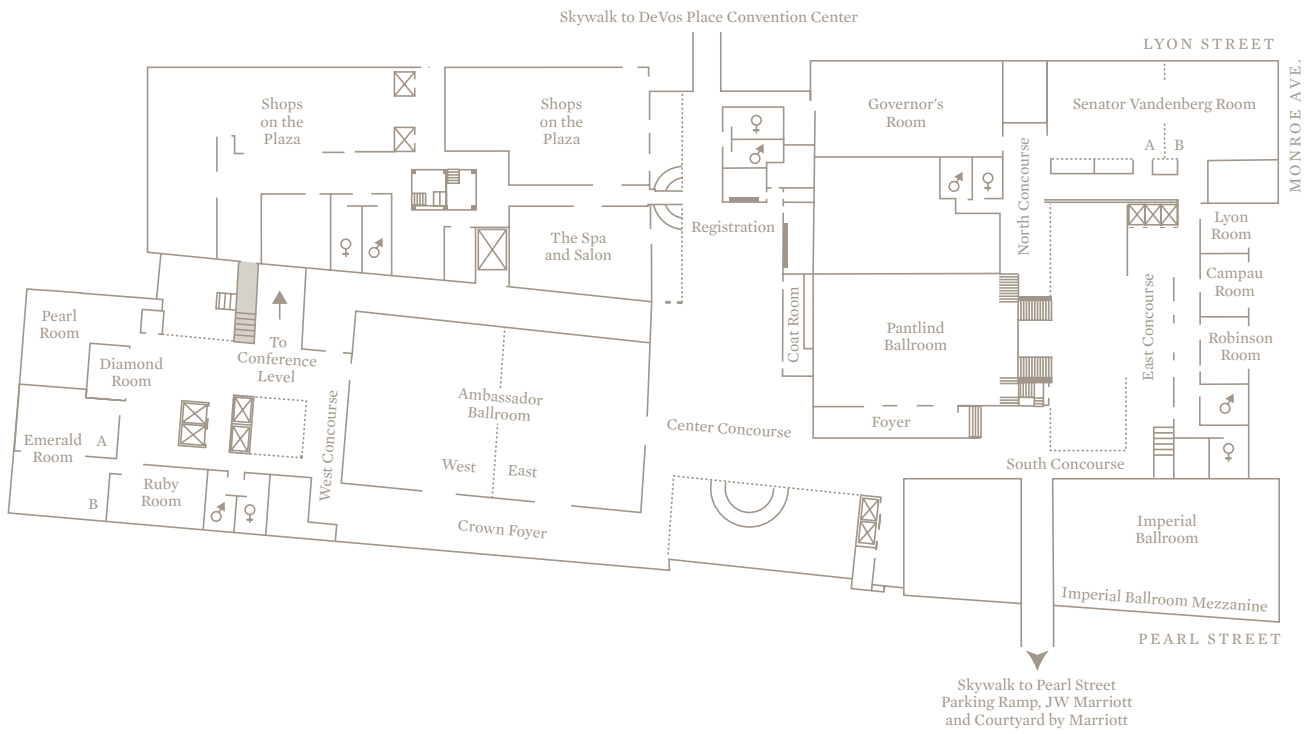
TOWER ELEVATORS TO

- Plaza Fitness Center, 4th Floor
- Tower Club, 25th Floor
- Cygnus 27, 27th Floor
- Sky I & II, Private Dining Rooms, 28th Floor
- Pinnacle Room, Take to 28th Floor

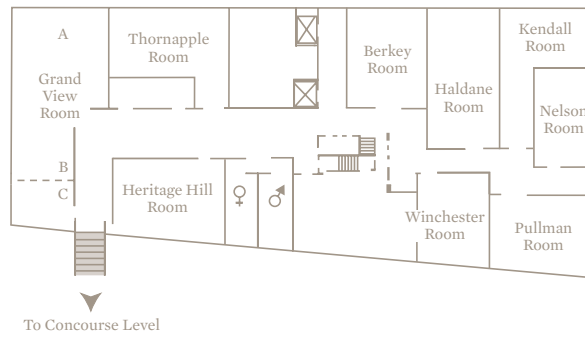
ATRIUM LEVEL—LOWER LEVEL



CONCOURSE LEVEL—2ND FLOOR



CONFERENCE LEVEL—3RD FLOOR



1,100 Rooms

1,100 ROOMS

1 Host
3 Hotels
3 Grand Suites
51 Suites
6 Spacious Ballrooms
68 Breakout Rooms
7,000 Surrounding Parking Spaces

DEVOS PLACE CONVENTION CENTER

162,000 square feet of Exhibit Space
40,000-square-foot Ballroom
21 Meeting and Breakout Rooms
2,400 Auditorium Seats

VAN ANDEL ARENA

12,000 Auditorium Seats

Amway Grand Plaza

DRIVING DIRECTIONS FROM

Detroit *I-196 W to Ottawa Exit 77 C,
Ottawa to Pearl, right on
Pearl to Hotel*

Chicago *I-196 E to Ottawa Exit 77 C,
Ottawa to Pearl, right on
Pearl to Hotel*

Kalamazoo *131 N to Pearl Exit 85 B to
Pearl, right on Pearl to Hotel*

Traverse City *131 S to Pearl Exit 85 B to
Pearl, left on Pearl to Hotel*

SELF PARKING

*Entrances located on Pearl Street
and also on Campau.
Hourly and overnight rates.*

VALET PARKING

*Entrance located on Pearl Street.
Hourly and overnight rates.*

DRIVING TIMES

Detroit *2 hours 26 minutes*

Chicago *2 hours 55 minutes*

Kalamazoo *51 minutes*

Traverse City *2 hours 13 minutes*

FLYING TIMES

Chicago *45 minutes*

Los Angeles *5 hours 22 minutes*

Miami *4 hours 25 minutes*

Minneapolis *1 hour 19 minutes*

New York *2 hours 16 minutes*

Washington, DC *1 hour 45 minutes*



OFFICE OF GRAND RAPIDS WATER DEPARTMENT

GRAND RAPIDS DEVELOPMENT CENTER

AMERICAN SEATING COMPANY

AMERICAN SEATING PARK

AMERICAN SEATING COMPANY

AMERICAN SEATING COMPANY

AMERICAN SEATING COMPANY

AMERICAN SEATING COMPANY

AMERICAN SEATING COMPANY

AMERICAN SEATING COMPANY

AMERICAN SEATING COMPANY

AMERICAN SEATING COMPANY

AMERICAN SEATING COMPANY

AMERICAN SEATING COMPANY

AMERICAN SEATING COMPANY

AMERICAN SEATING COMPANY

AMERICAN SEATING COMPANY

AMERICAN SEATING COMPANY

AMERICAN SEATING COMPANY

Post Office

DeVos Place

DeVos Performance Hall

AMWAY GRAND PLAZA

Public Museum

Public Library

Van Andel Arcia

Transit Center

GR Ballet

Federal Building

City Hall

Kent County Building

County Courthouse

Police Department

Secretary of State

WPU Graduate Center

St. Mary's Health Care

Mary Free Bed

Mary Free Bed

PSU Secchia Center

Van Andel Institute

Spectrum Health

GRCC Science Center

GRCC Student Center

GRCC Learning Resource Center

GRCC Library

GRCC Theater

GRCC Music Building

GRCC Learning Resource Center

GRCC Learning Resource Center

PSU Secchia Center

Van Andel Institute

Spectrum Health

GRCC Science Center

GRCC Student Center

GRCC Learning Resource Center

GRCC Library

GRCC Theater

GRCC Music Building

GRCC Learning Resource Center

GRCC Learning Resource Center

PSU Secchia Center

Van Andel Institute

Spectrum Health

GRCC Science Center

GRCC Student Center

GRCC Learning Resource Center

GRCC Library

GRCC Theater

GRCC Music Building

GRCC Learning Resource Center

GRCC Learning Resource Center

PSU Secchia Center

Van Andel Institute

Spectrum Health

GRCC Science Center

GRCC Student Center

GRCC Learning Resource Center

GRCC Library

GRCC Theater

GRCC Music Building

GRCC Learning Resource Center

GRCC Learning Resource Center

© 2010 Planning Department

hotel details

AMWAY GRAND PLAZA

187 Monroe NW, Grand Rapids, MI 49503

Telephone 616.774.2000

Fax 616.776.6489

Toll-Free Number 800.253.3590

Group Sales 616.776.6400

Group Sales Fax 616.776.6496

Reservation Fax 616.458.6641

Website amwaygrand.com

AAA Status *Four Diamond (Hotel)*

Four Diamond (Cygnus 27)

Affiliations 1. *Curio by Hilton®*

Hilton.com

2. *Associated Luxury Hotels*

alhi.com

3. *Krisam Group*

krisam.com

4. *Elite Meetings*

elitemeetings.com

TRAVEL INFORMATION

Airport *Gerald R. Ford International
Airport (GRR)*

Hotel GDS Code *PH*

Miles from Airport *13 Miles (18 Minutes)*

HOTEL FACILITIES

Fitness Center *Located on the fourth floor of the Glass Tower. Indoor pool, two hot tubs, cardio, weights, lighted outdoor tennis, racquetball, luxurious locker rooms, and refreshment counter.*

Plaza Gift Shop *Sundries, gifts, newspapers, and snacks.*

Plaza Men's Shop *Featuring designs by Joseph Abboud, Axis, and more.*

The Spa and Salon *Luxurious spa and salon services, as well as in-room treatments.*

Other Outlets *Women's apparel, photography studio, etc.*

*Eight Restaurants and Lounges
plus 24-hour Room Service or In-Room Dining*

GUEST ROOM INFORMATION

- 682 Guest Rooms
- 12 Junior Suites
- 18 Tower Luxury Suites
- 9 Plaza Luxury Suites
- 2 Grand Suites
- Complimentary High-speed Internet—in all Guest Rooms

MEETING AND FUNCTION SPACES

- 47,120—Total meeting room square footage
- 12,536—Total hotel concourse and foyer area square footage
- 35 breakout rooms
- 2 lockable registration counters with office and storage space
- Additional 250,000 square feet at DeVos Place Convention Center (connected to the hotel via climate-controlled skywalk)

DEVOS PLACE
CONVENTION CENTER

Designed as one of the Midwest's most advanced event venues, DeVos Place does not disappoint. Built on 13 acres of riverfront real estate in downtown Grand Rapids, at a cost of \$220 million, the convention center is the epitome of state-of-the-art elegance.

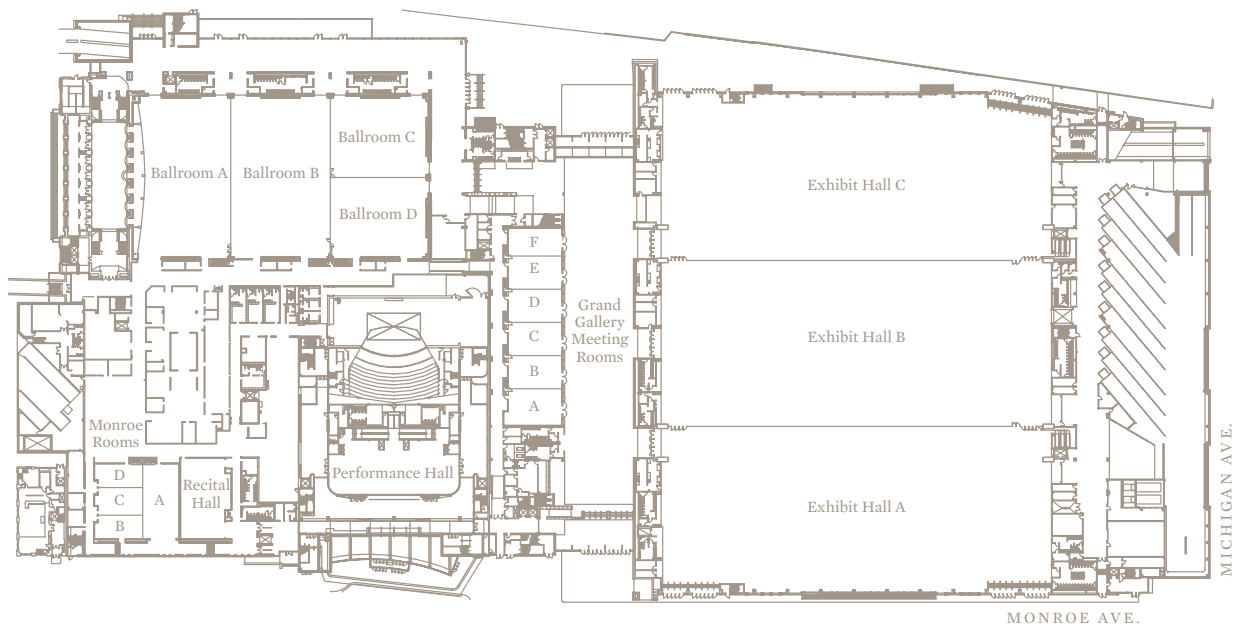
Connected via a climate-controlled skywalk from the Amway Grand Plaza, DeVos Place offers 250,000 square feet of flexible meeting and convention space. It is perfectly equipped to accommodate any size meeting, convention, and trade show, as well as performing arts and touring events. Even more so, the venue is capable of hosting a variety of events simultaneously.

DeVos Performance Hall, located inside DeVos Place, is home to the Grand Rapids Symphony and Broadway Grand Rapids.

DEVOS PLACE CONVENTION CENTER

	Dimension (l' x w')	Ceiling Height	Square Footage	Booths (10x10)	Theater Style	Classroom	Reception (standing)	Banquet (tables for 10)
EXHIBIT HALL								
HALL A	150x360	37-60	54,000	281	4,528	3,560	6,000	3,390
HALL B	150x360	56-72	54,000	294	4,644	3,680	6,000	3,460
HALL C	150x360	37-60	54,000	282	4,493	3,560	6,000	3,320
TOTAL	450x360	37-72	162,000	865	14,950	11,000	18,000	10,730
BALLROOM								
BALLROOM A	143x89	28	12,727	64	1,303	744	1,600	720
BALLROOM B	143x90	28	12,870	67	1,376	930	1,650	840
BALLROOM C & D	71x86	28	6,106	33	576	420	800	350
TOTAL	147x267	28	40,000	196	4,312	2,556	5,000	2,560
RIVER OVERLOOK MEETING ROOMS								
BOARDROOM	27x49	14	1,323	NA	140	90	142	80
A-F	28x36	14	1,008	NA	108	70	128	60
A/B, C/D, & E/F	58x36	14	2,088	NA	220	144	211	140
GRAND GALLERY MEETING ROOMS								
A	33x48	18	1,584	NA	170	108	200	120
B-E	30x48	18	1,440	NA	160	100	190	110
F	25x48	18	1,200	NA	120	82	150	90
TOTAL	48x178	18	8,544	44	930	600	1,000	700
GRAND GALLERY OVERLOOK MEETING ROOMS								
A, C, F & H	34x34	14	1,156	NA	126	72	142	90
B, D, E, & G	26x34	14	884	NA	100	60	120	70
MONROE AVENUE MEETING ROOMS & RECITAL HALL								
ROOM A	33x68	17	2,244	NA	285	180	295	100
ROOM B	43x21	17	903	NA	72	48	80	30
ROOM C	40x25	17	1,000	NA	90	60	105	60
ROOM D	43x21	17	903	NA	81	48	95	30
TOTAL	76x68	17	5,168	29	600	384	600	300
RECITAL HALL	40x73	17	2,920	NA	266	180	263	180

MAIN LEVEL



OVERLOOK MEETING ROOM

