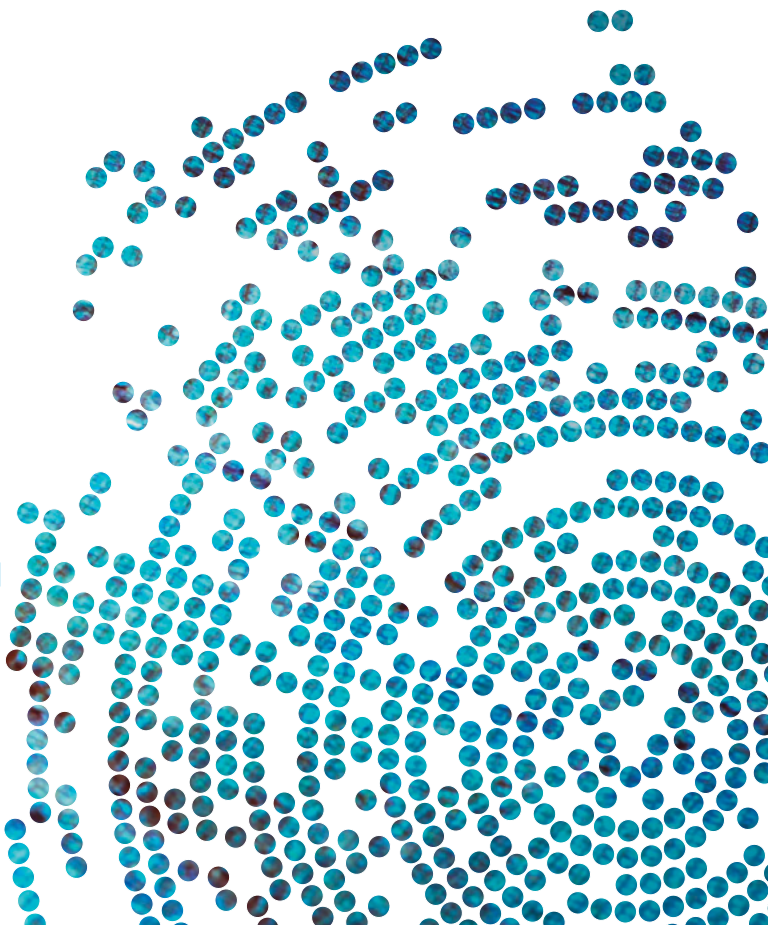




# PMC

PERSONALIZED  
MEDICINE COALITION


# Membership Brochure



# ABOUT PMC

**An educational and advocacy organization, PMC promotes personalized medicine** by addressing regulatory, reimbursement and clinical adoption issues critical to the field's advancement. Based on the diversity of its membership, PMC has become the pre-eminent source of knowledge about personalized medicine and a force for shaping policy about and increasing investment in the field.

## **The Coalition:**

- **Provides opinion leadership** on policy issues that affect personalized medicine;
  - **Helps educate policymakers** in government, industry and academia about the benefits of personalized medicine; and
  - **Serves as a forum** for identifying and informing others of policies that could advance or impede the development of personalized medicine.
- 

**The Personalized Medicine Coalition**, representing innovators, scientists, patients, providers and payers, promotes the understanding and adoption of personalized medicine concepts, services and products to benefit patients and the health system.

## BENEFITS OF MEMBERSHIP

By joining PMC, organizations gain an opportunity to shape the future of the field by:

- **Having a voice in creating a favorable policy environment** for personalized medicine;
- **Forging relationships** with other stakeholders in personalized medicine; and
- **Sharing best practices**
  - Educational resources
  - Forums for debate and consensus-driven solutions
  - Networking within and across domains

Members also learn about the latest trends and developments in science, policy and business through forums, newsletters and member-only updates.

Personalized medicine is transforming the practice of medicine, and the Personalized Medicine Coalition is playing a critical role in bringing together all of the stakeholders to help make that happen.

Raju Kucherlapati, Ph.D.  
Paul C. Cabot Professor of Genetics  
Professor of Medicine  
Harvard Medical School

## The Role of the Personalized Medicine Coalition

Paradigm shifts, especially in medicine, do not happen just because the science or new technologies suggest they should. Based on that assumption, at the end of 2004, some 20 institutions representing all sectors of the health care ecosystem launched the Personalized Medicine Coalition (PMC). These founding institutions represented the pharmaceutical, biotechnology and diagnostic industries, tool manufacturers, academic health centers, venture capitalists, insurance companies and patient advocates.

With the growth of personalized medicine over the past decade, the Coalition has expanded to include more than 250 institutions across the health care spectrum. Along with raising personalized medicine's profile, PMC advocates for changes that will increase investment in personalized medicine and facilitate its adoption so that both patients and the health system will benefit from improved clinical care and increased overall value.

### What is Personalized Medicine?

Personalized medicine is an evolving field in which physicians use diagnostic tests to determine which medical treatments will work best for each patient. By combining the data from those tests with an individual's medical history, circumstances and values, health care providers can develop targeted treatment and prevention plans.

# PMC MEMBERSHIP

A 501(c)3 organization, PMC is an independent, non-partisan educational and advocacy organization with members that are committed to science-driven, evidence-based health care.

## **CLINICAL LABORATORY TESTING SERVICES**

AlphaGenomix Laboratories  
ARIEL Precision Medicine  
Clinical Reference Laboratory, Inc.  
Empire Genomics  
Laboratory Corporation of America (LabCorp)  
Metabolon, Inc.  
Proove Biosciences  
Quest Diagnostics

## **DIAGNOSTIC COMPANIES**

Abbott  
Agendia NV  
Alacris Theranostics GmbH  
Almac Diagnostics  
AltheaDX  
Assurex Health, Inc.  
ASURAGEN, Inc.  
BD (Becton Dickinson & Company)  
Biological Dynamics, Inc.  
Caprion Proteomics  
CareDx, Inc.  
Caris Life Sciences  
Celcuity, LLC  
Counsyl  
Exosome Diagnostics  
Foundation Medicine, Inc.  
GeneCentric Diagnostics  
Genomic Health, Inc.  
Guardant Health  
Inivata  
Interleukin Genetics, Inc.  
Invivoscribe Technologies, Inc.  
Luminex Corporation  
Metamark Genetics, Inc.  
NanoString Technologies  
OmniSeq  
Personal Genome Diagnostics (PGDx)  
QIAGEN, Inc.  
RIKEN GENESIS  
Roche Diagnostics Corporation  
Siemens Healthcare Diagnostics, Inc.  
SomaLogic, Inc.

## **EMERGING BIOTECH/ PHARMACEUTICAL COMPANIES**

Altan Pharma, Ltd.  
AveXis  
Ignyta  
Syros Pharmaceuticals  
Unum Therapeutics  
Zinfandel Pharmaceuticals, Inc.

## **HEALTH INSURANCE COMPANIES**

Harvard Pilgrim Health Care

## **INDUSTRY/TRADE ASSOCIATIONS**

American Clinical Laboratory Association  
BIO (Biotechnology Innovation Organization)  
Biocom  
PhRMA

## **IT/INFORMATICS COMPANIES**

5AM Solutions, Inc.  
Change Healthcare  
Cytolon AG  
DNAexus  
Flatiron Health  
Genospace  
GNS Healthcare  
Inspire  
Intel Corporation  
M2Gen  
McKesson  
NextGxDx  
Oracle Health Sciences  
Seven Bridges  
Syapse  
UNICONnect, LC  
XIFIN, Inc.

## **LARGE BIOTECH/ PHARMACEUTICAL COMPANIES**

Amgen, Inc.  
Astellas Pharma Global Development  
AstraZeneca Pharmaceuticals  
Boehringer-Ingelheim Pharmaceuticals, Inc.  
Bristol-Myers Squibb  
Eli Lilly and Company

EMD Serono  
Endo Health Solutions  
Genentech, Inc.  
GlaxoSmithKline, PLC  
Johnson & Johnson  
Merck & Co.  
Takeda Oncology  
Teva  
Novartis  
Pfizer, Inc.

## **PATIENT ADVOCACY GROUPS**

Accelerated Cure Project for Multiple Sclerosis  
Alliance for Aging Research  
Bonnie J. Addario Lung Cancer Foundation  
Bulgarian Association for Personalized Medicine  
Friends of Cancer Research  
Global Liver Institute  
International Cancer Advocacy Network ("ICAN")  
LUNGevity Foundation  
Melanoma Research Alliance Foundation  
Multiple Myeloma Research Foundation  
National Alliance for Hispanic Health  
National Patient Advocate Foundation  
One Disease at a Time

## **PERSONALIZED MEDICINE SERVICE PROVIDERS**

23andMe  
Cure Forward  
Health Decisions  
InformedDNA  
Intervention Insights  
KEW Group  
Massive Bio  
Michael J. Bauer, M.D., & Associates, Inc.  
MolecularHealth  
NantHealth  
N-of-One, Inc.  
Perthera  
Precision for Value  
Tabula Rasa HealthCare, Inc.  
Tempus

**RESEARCH, EDUCATION  
& CLINICAL CARE  
INSTITUTIONS**

American Association for Cancer Research (AACR)  
 American Medical Association (AMA)  
 Association for Molecular Pathology (AMP)  
 Baylor Health Care System Precision Medicine Institute  
 Brigham and Women's Hospital, Genomes2People Research Program  
 Brown University  
 Cancer Treatment Centers of America  
 Catholic Health Initiatives Center for Translational Research  
 The Christ Hospital College of American Pathologists  
 Coriell Institute for Medical Research  
 CREATE Health Translational Cancer Centre, Lund University  
 Duke Center for Research on Personalized Health Care  
 Essentia Institute of Rural Health  
 Genome British Columbia  
 Genome Canada  
 Génome Québec  
 Harvard Business School  
 Helmholtz Zentrum München  
 Indiana Institute of Personalized Medicine  
 Inova Health System  
 Instituto de Salud Carlos III  
 Intermountain Healthcare  
 International Society of Personalized Medicine  
 The Jackson Laboratory  
 Knight Cancer Institute – Oregon Health & Sciences University  
 Manchester University School of Pharmacy  
 Marshfield Clinic  
 Mayo Clinic  
 MD Anderson – Institute for Personalized Cancer Therapy  
 Mission Health, Fullerton Genetics Center  
 Moffitt Cancer Center

National Foundation for Cancer Research  
 National Pharmaceutical Council  
 North Carolina Biotechnology Center  
 NorthShore University HealthSystem  
 Ontario Genomics Institute  
 Partners HealthCare Personalized Medicine  
 Poliambulatorio Euganea Medica  
 Precision Health Initiative at Cedars-Sinai  
 Qatar Biobank  
 The Quebec Network for Personalized Health Care  
 Raabe College of Pharmacy, Ohio Northern University  
 Roswell Park Cancer Institute  
 Rutgers Cancer Institute of New Jersey  
 Sanford Imagenetics, Sanford Health  
 Stanford University School of Medicine  
 Sutter Health  
 Sylvester Comprehensive Cancer Center – University of Miami  
 UC Davis Mouse Biology Program  
 University of Alabama, Birmingham  
 University of Florida  
 University of Pennsylvania Health System  
 University of Pittsburgh Medical Center (UPMC)  
 University of Rochester  
 University of South Florida Morsani College of Medicine  
 The University of Texas System  
 Vanderbilt University Medical Center  
 Virginia Commonwealth University Health System  
 Wake Forest Baptist Medical Center  
 West Cancer Center

**RESEARCH TOOL COMPANIES**

Cynvenio Biosystems, Inc.  
 DNA Genotek, Inc.  
 Genia Technologies  
 Illumina, Inc.  
 Thermo Fisher Scientific

**STRATEGIC PARTNERS**

Arnold & Porter, LLP  
 Bioscience Valuation BSV GmbH  
 Bruce Quinn Associates  
 Cambridge Healthtech Institute  
 CKSA  
 Clarity Research & Consulting  
 Co-Bio Consulting, LLC  
 ConText  
 ConvergeHEALTH by Deloitte  
 Credit Suisse  
 Defined Health  
 EdgeTech Law, LLP  
 Ernst & Young Global Life Sciences Center  
 Feinstein Kean Healthcare  
 Foley Hoag, LLP  
 Foley & Lardner, LLP  
 Genome magazine  
 GlobalData, PLC  
 Goldbug Strategies, LLC  
 HealthFutures, LLC  
 Health Advances, LLC  
 Hogan Lovells, LLP  
 Jared Schwartz, M.D., Ph.D., LLC  
*Journal of Precision Medicine*  
 Kinapse  
 L.E.K. Consulting  
 McDermott Will & Emery  
 Navigant  
 Nixon Peabody, LLP  
 Pendergast Consulting  
*Personalized Medicine in Oncology™*  
 PricewaterhouseCoopers, LLP  
 Professional Genetic Interactions  
 Quorum Consulting  
 Slone Partners  
 Spectrum  
 Teal Lion, LLC  
 Washington Media Group

**VENTURE CAPITAL**

GreyBird Ventures, LLC  
 Kleiner Perkins Caufield & Byers  
 Mohr Davidow Ventures  
 Third Rock Ventures, LLC

# MEMBERSHIP APPLICATION

---

ORGANIZATION NAME

---

ADDRESS

---

CITY

STATE

ZIP

---

COUNTRY

---

PHONE

FAX

---

PRIMARY CONTACT NAME

---

EMAIL

## MEMBER LIST CATEGORY

Please select the appropriate member list category:

- Clinical Laboratory Testing Services
- Diagnostic Companies
- Emerging Biotech/Pharmaceutical Companies
- Health Insurance Companies
- Industry and Trade Associations
- IT/Informatics Companies
- Large Biotech/Pharmaceutical Companies
- Patient Advocacy Groups
- Personalized Medicine Service Providers
- Research, Education & Clinical Care Institutions
- Research Tool Companies
- Strategic Partners
- Venture Capital Firms

## ORGANIZATION TYPE/DUES

Please select the appropriate annual dues structure:

- Large Public Corporation \$29,000
- Small Public Corporation \$14,500
- Trade Association (based on revenues)
- Private Corporation >50 FTEs \$5,775
- Professional Society \$5,775
- Private Corporation <50 FTEs \$3,500
- Strategic Partner \$2,900
- Research, Education & Clinical Care Institutions \$2,900
- Sole Proprietor \$1,150
- Patient Advocacy Group \$500

Amount \$ \_\_\_\_\_ Check # \_\_\_\_\_

**Mail completed application and payment to:**

Personalized Medicine Coalition  
1710 Rhode Island Avenue, NW, Suite 700  
Washington, DC 20036

## STAFF

**Edward Abrahams, Ph.D.**

*President*

**Daryl Pritchard, Ph.D.**

*Senior Vice President,  
Science Policy*

**Cynthia A. Bens**

*Vice President, Public Policy*

**Mary Bordoni**

*Director, Membership &  
Development*

**Faswillia Sampson**

*Director, Operations & Secretary  
to the Board*

**Christopher Wells**

*Director, Communications*

**Kayla Smith**

*Associate Director, Membership &  
Development*

**David Davenport**

*Office Administrator*

## BOARD OF DIRECTORS

**Stephen L. Eck, M.D., Ph.D.**

*Board Chair*

*Aravive Biologics*

**Jay G. Wohlgenuth, M.D.**

*Board Vice Chair*

*Quest Diagnostics*

**Peter Maag, Ph.D.**

*Board Treasurer*

*CareDx*

**Amy P. Abernethy, M.D., Ph.D.**

*Board Secretary*

*Flatiron Health, Inc.*

**Bonnie J. Addario**

*Bonnie J. Addario Lung  
Cancer Foundation*

**Steven D. Averbuch, M.D.**

*Bristol-Myers Squibb Company*

**Paul R. Billings, M.D., Ph.D.,**

**F.A.C.P., F.A.C.M.G.**

*Biological Dynamics, Inc.*

**William W. Chin, M.D.**

*PhRMA*

**Neil de Crescenzo**

*Change Healthcare*

**Donna R. Cryer, J.D.**

*Global Liver Institute*

**William S. Dalton, Ph.D., M.D.**

*M2Gen*

**Timothy J. Garnett, F.R.C.O.G.,**

**M.F.F.P., F.F.P.M.**

*Eli Lilly and Company*

**Brad Gray**

*NanoString Technologies*

**Susan McClure**

*Genome magazine*

**Howard L. McLeod, Pharm.D.**

*Moffitt Cancer Center*

**J. Brian Munroe**

*Endo Pharmaceuticals*

**Michael Pellini, M.D.**

*Foundation Medicine, Inc.*

**Kimberly J. Popovits**

*Genomic Health*

**Hakan Sakul, Ph.D.**

*Pfizer, Inc.*

**Michael Sherman, M.D.,**

**M.B.A., M.S.**

*Harvard Pilgrim Health Care*

**Michael J. Vasconcelles, M.D.**

*Unum Therapeutics*



PERSONALIZED  
MEDICINE COALITION

1710 Rhode Island Ave., NW, Suite 700  
Washington, DC 20036

P: 202.589.1770

[pmc@personalizedmedicinecoalition.org](mailto:pmc@personalizedmedicinecoalition.org)