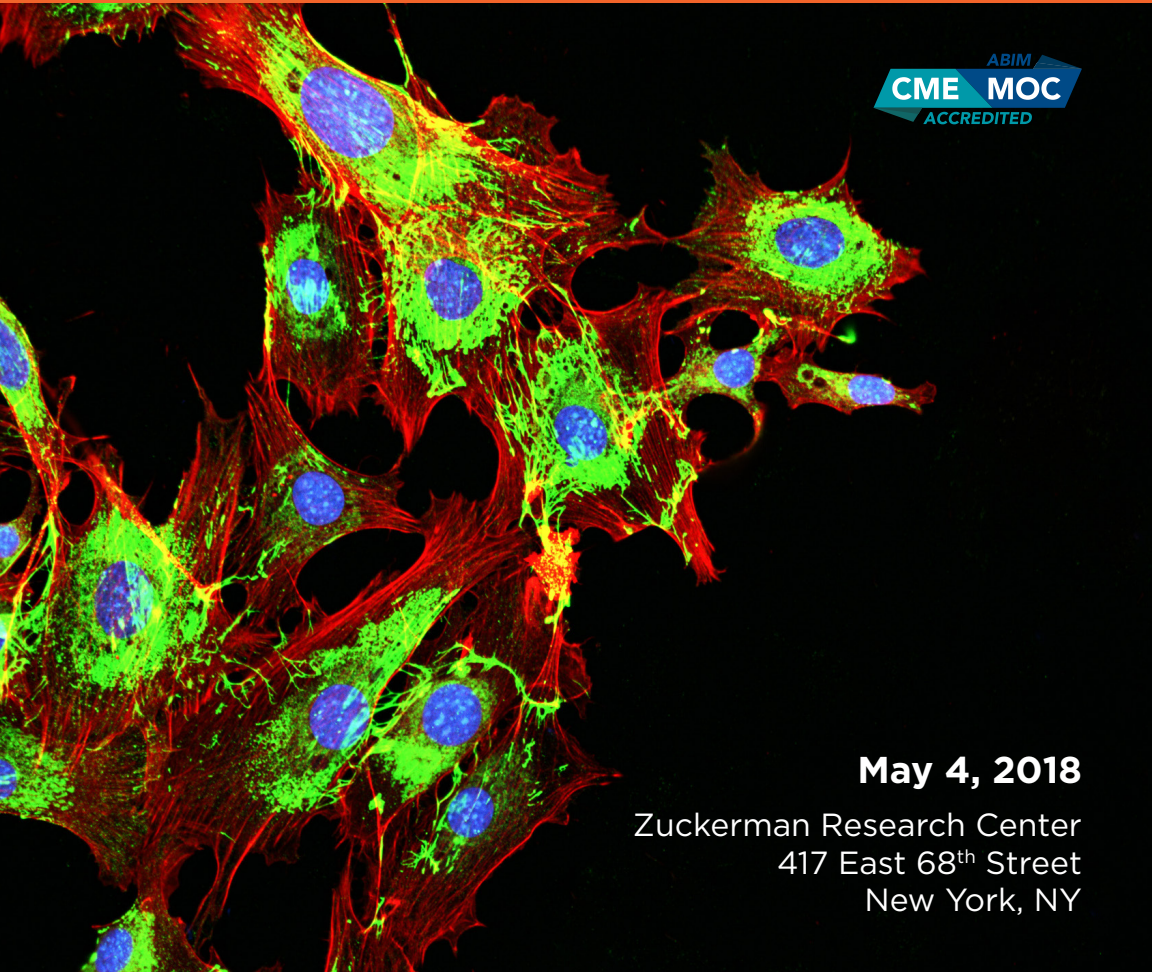


Memorial Sloan Kettering Cancer Center presents:

# Innovations in Personalized Oncology

A CASE-BASED APPROACH

ABIM  
CME MOC  
ACCREDITED



**May 4, 2018**

Zuckerman Research Center  
417 East 68<sup>th</sup> Street  
New York, NY



Memorial Sloan Kettering  
Cancer Alliance

Hartford  
HealthCare  
Connect to healthier.™

Lehigh Valley  
Health Network  
CANCER INSTITUTE

Miami Cancer Institute  
BAPTIST HEALTH SOUTH FLORIDA

3<sup>rd</sup> Annual MSK Cancer Alliance Symposium

# Innovations in Personalized Oncology

Research advances are leading at an unprecedented rate to opportunities for greater personalization of management approaches for patients with cancer and the promise of related improvements in disease-control and patient-reported outcomes. A challenge facing clinical practitioners, oncology care teams and healthcare systems is the identification and timely integration of these important innovations, often developed at specialty centers, into day-to-day clinical practice in the community setting and closer to where patients live.

A central goal of this CME course is to help busy oncologists and other oncology care team members acquire clinically-relevant, cutting-edge knowledge and translate these innovations into best practices, using lessons learned within the MSK Cancer Alliance and highlighting the personalized approach to cancer care taken by MSK and its Alliance Members.

## A CASE-BASED APPROACH

Incorporating a case-based format that utilizes real-life, clinical scenarios, the moderator of each multidisciplinary expert panel will use audience response to examine key decision points and guide targeted commentary and presentations from panel members that include oncologists and other oncology care team members.

Panels will cover eight different diseases, both rare and more common, and address a spectrum of management issues across the care continuum. Immunotherapy, from evolving predictors of response to symptom management for these new agents, will be the focus of two keynote talks.

After this course, attendees will be better able to tailor care to meet the unique needs of their patients and appreciate the role of dynamic partnerships among providers to optimally personalize and improve outcomes of cancer care.

## TARGET AUDIENCE

The target audience for this course includes physicians, advanced practice providers, nurses, allied health professionals and administrators looking for innovative, disease-specific oncology content set within multidisciplinary case discussions.



## 3<sup>RD</sup> ANNUAL MSK CANCER ALLIANCE SYMPOSIUM

The MSK Cancer Alliance is a collaborative relationship, leveraging bi-directional learning for mutual improvement. It is composed of MSK and a small number of high-quality, community healthcare systems seeking to be centers of excellence in their respective communities with a focus on clinical research and a culture of improvement. The MSK Cancer Alliance strives to bridge the knowledge gaps between an academic comprehensive cancer center such as MSK and community hospitals in order to help facilitate the delivery of high-quality cancer care at the community level, an important need since most cancer care is delivered in the community setting.

### Discounted Rate for MSK Alliance Members

MSK offers a discounted rate to all MSK Alliance members to attend a CME course. Please contact [cme@mskcc.org](mailto:cme@mskcc.org) for more information or a promotion code.



Please note: Providers outside of the MSK Cancer Alliance are encouraged to attend this symposium.

# Symposium Faculty

## COURSE DIRECTOR



### David G. Pfister, MD

Associate Deputy Physician-in-Chief, Strategic Partnerships  
Chief, Head and Neck Oncology  
Attending Physician  
Department of Medicine  
Memorial Sloan Kettering Cancer Center

## COURSE CO-DIRECTORS



### Steven Jon Shichman, MD

Physician in Chief  
Tallwood Urology and Kidney Institute  
Hartford Healthcare Cancer Institute



### Usman Shah, MD

Assistant Medical Director  
Lehigh Valley Health Network Cancer Institute



### Starr Mautner, MD

Breast Surgical Oncologist  
Miami Cancer Institute

## MSK FACULTY

### Smita Banerjee, PhD

Assistant Attending Behavioral Scientist  
Department of Psychiatry & Behavioral Services

### Connie Batlevi, MD, PhD

Assistant Attending Physician  
Lymphoma Service  
Department of Medicine

### Kevin C. De Braganca, MD

Associate Program Director  
Pediatric Neuro-Oncology Fellowship  
Assistant Attending Pediatrician  
Pediatric Neuro-Oncology Service  
Department of Pediatrics

### Timothy Chan, MD, PhD

Vice Chair, Department of Radiation Oncology  
Director, Translational Oncology Division  
Director, Immunogenomics and Precision  
Oncology Platform  
PaineWebber Chair in Cancer Genetics  
Member, Human Oncology & Pathogenesis Program  
Attending Physician  
Department of Radiation Oncology

### Jason Carter, PA-C

Physician Assistant, Clinical Research  
Department of Medicine

### Andrea Cercek, MD

Assistant Attending Physician  
Gastrointestinal Oncology Service  
Department of Medicine

### Lawrence Dauer, PhD

Clinical Physicist, Radiation Safety Manager  
Chair, Emergency Management Committee  
Radiochemistry and Imaging Sciences Service  
Department of Medical Physics  
Department of Radiology

### James Eastham, MD

Chief, Urology Service  
Peter T. Scardino Chair in Oncology  
Attending Surgeon  
Department of Surgery

### Lauren Evans, MSN, OCN, CCRP

Clinical Trials Nurse Coordinator  
Department of Nursing

### Ginger Gardner, MD

Physician Lead  
Alliance Gynecology Disease Management Team  
Associate Attending Physician  
Gynecology Service  
Department of Surgery

### Ruth-Ann Gordon, MSN, FNP-BC, OCN

Clinical Trials Nurse Coordinator  
Department of Nursing

### Alan Ho, MD

Geoffrey Beene Junior Faculty Chair  
Assistant Attending Physician  
Head and Neck Oncology Service  
Department of Medicine

### Philip Kantoff, MD

Chair, Department of Medicine  
George J. Bosl Chair  
Attending Physician  
Genitourinary Oncology Service  
Department of Medicine

### Bob Li, MD, MPH

Assistant Attending Physician  
Thoracic Oncology Service,  
Developmental Therapeutics  
Department of Medicine

### Sean McBride, MD, MPH

Assistant Attending Radiation Oncologist  
Department of Radiation Oncology

### Elizabeth Morris, MD

Chief, Breast Imaging Service  
Larry Norton Chair  
Attending Radiologist  
Department of Radiology

### Michael Morris, MD

Associate Attending Physician  
Genitourinary Oncology Service  
Department of Medicine

### Alison J. Moskowitz, MD

Assistant Attending Medical Oncologist  
Clinical Director, Lymphoma Inpatient Unit  
Department of Medicine

### Larry Norton, MD

Deputy Physician-in-Chief, Breast Cancer Programs  
Medical Director, Evelyn H. Lauder Breast Center  
Norna S. Sarofim Chair in Clinical Oncology  
Attending Physician  
Breast Medicine Service  
Department of Medicine

### Roisin E. O’Cearbhaill, MD

Assistant Attending Physician  
Gynecologic Medical Oncology Service  
Department of Medicine

### Bernard Park, MD

Deputy Chief of Clinical Affairs, Thoracic Service  
Attending Surgeon  
Surgical Director, Alliance Programs  
Department of Surgery

### Melissa Pilewskie, MD

Assistant Attending Surgeon  
Breast Service  
Department of Surgery

### Marc Rosenblum, MD

Chief, Autopsy Service  
Director, Neuropathology  
Founder’s Chair  
Attending Pathologist  
Department of Pathology

### Mikel Ross, BSN, RN, OCN, CBCN

Office Practice Nurse,  
Outpatient Breast Medicine Service  
Department of Nursing

## INVITED FACULTY

### Mario Katigbak, MD

Division Chief of Thoracic Surgery  
Hartford Healthcare

### Peter Yu, MD

Physician-in-Chief  
Hartford HealthCare Cancer Institute

### Martin Martino, MD

Medical Director  
Minimally Invasive Robotic Surgery  
Lehigh Valley Health Network

### Paul Sabbatini, MD

Deputy Physician-In-Chief, Clinical Research  
Attending Physician  
Gynecologic Medical Oncology Service  
Department of Medicine

### Mona Sabra, MD

Attending Physician  
Endocrinology Service  
Department of Medicine

### Leonard B. Saltz, MD

Executive Director, Clinical Value and Sustainability  
Attending Physician  
Gastrointestinal Oncology Service  
Department of Medicine

### Stephen Sands, PsyD

Director, Pediatric Neuropsychology  
Attending Psychologist  
Psychiatry Service  
Department of Pediatrics

### Jesse Joshua Smith, MD, PhD

Assistant Attending Surgeon  
Colorectal Service  
Department of Surgery

### William P. Tew, MD

Associate Attending Physician  
Gynecologic Medical Oncology Service  
Department of Medicine

### John Timoney, Pharm D

Assistant Director, Pharmacy  
MSKCC, Basking Ridge

### Tiffany A. Traina, MD

Associate Attending Physician  
Breast Medicine Service  
Department of Medicine

### Michael Tuttle, MD

Attending Physician  
Endocrinology Service  
Department of Medicine

### Suzanne L. Wolden, MD

Attending Radiation Oncologist  
Radiation Oncology Director, Alliance Programs  
External Beam Radiotherapy Service  
Brachytherapy Service  
Department of Radiation Oncology

### Rona D. Yaeger, MD

Assistant Attending Physician  
Gastrointestinal Oncology Service  
Department of Medicine

### Helena A. Yu, MD

Assistant Attending Physician  
Thoracic Oncology Service  
Department of Medicine

### Andrew D. Zelenetz, MD, PhD

Medical Director, Quality Informatics  
Attending Physician  
Lymphoma Service  
Division of Hematologic Oncology  
Department of Medicine

### John S. Park, MD

Associate Program Director,  
LVHN Colorectal Surgery Fellowship  
Lehigh Valley Health Network

### Marcio Fagundes, MD

Attending Radiation Oncologist  
Miami Cancer Institute

### Matthew Hall, MD

Attending Radiation Oncologist  
Miami Cancer Institute

# Scientific Agenda



7:30 AM	Breakfast & Registration	
8:00 AM	<b>Opening Remarks</b>	David G. Pfister, MD
8:10 AM	<b>Keynote Speaker</b> Evolving Predictors of Response for Immunotherapy	Timothy Chan, MD
8:35 AM	<b>Non-Hodgkin's Lymphoma</b>	
	CASE PRESENTATION: 56-year-old Female with a Biopsy-proven Composite of Dominant Follicular Lymphoma, Grade 1-2, and a Component of SLL/CLL	MODERATOR: Andrew Zelenetz, MD, PhD
	Dramatic Response to Mocetinostat in a PT with a CREBP/EP300 Mutation	Connie Batlevi, MD, PhD
	Is Observation Still an Appropriate Option for Treatment of Indolent Lymphoma?	Andrew Zelenetz, MD, PhD
	Checkpoint Inhibitors in Primary Mediastinal Large Cell Lymphoma	Alison J. Moskowitz, MD
	APP Role in the Conduct of Phase I Trial of a Novel PI3K Inhibitor	Jason Carter, PA-C
9:20 AM	<b>Prostate Cancer</b>	
	CASE PRESENTATION: 65-year-old Male with Back Pain, Elevated PSA and Extensively Positive Bone Scan	MODERATOR: Philip Kantoff, MD
	Treatment vs. Active Surveillance for Good Risk Prostate Cancer: Available Tests, their Performance	James Eastham, MD
	Approach to a Patient with High-risk Localized Prostate Cancer	Sean McBride, MD
	Approach to a Patient with Metastatic Hormone-sensitive Prostate Cancer: What Data Shows Us?	Michael Morris, MD
	How to Use Genetic Data to Generate a Rational Approach for Patients with Metastatic Castration-resistant Prostate Cancer	Philip Kantoff, MD
10:05 AM	Break	
10:30 AM	<b>Pediatric Cancers</b>	
	CASE PRESENTATION: 18-year-old Female with Desmoplastic Medulloblastoma	MODERATOR: Suzanne Wolden, MD
	Molecular Subtyping of Medulloblastoma	Marc Rosenblum, MD
	Chemotherapy Strategy; Outcomes for Adults	Kevin C. De Braganca, MD
	Role of Proton Craniospinal RT	Matthew Hall, MD
	Long-term Neuropsychiatric Outcomes in Survivors of Medulloblastoma	Stephen Sands, PsyD
11:15 AM	<b>Gynecological Cancers</b>	
	CASE PRESENTATION: 45-year-old with Stage IIIc Optimally Debulked Ovarian Cancer, Recurrent	MODERATOR: Paul Sabbatini, MD
	IP vs. IV Dose-dense vs. IV Three-Weekly Treatment	William P. Tew, MD
	Resection at Recurrence - When is it Right to Do It?	Ginger Gardner, MD
	The Role of Robotic Resection	Martin Martino, MD
	PARP Maintenance for Everyone?	Roisin E. O'Cearbhaill, MD
	Cold Cap Use to Prevent Hair Loss	Mikel Ross, RN
12:00 PM	Lunch	

1:00 PM	<b>Keynote Speaker</b> Checkpoint Inhibitors - Symptom Assessment and Management from a Nursing Perspective	Ruth-Ann Gordon, MSN, FNP-BC, OCN
1:25 PM	<b>Thyroid Cancer</b>	
	CASE PRESENTATION: 71-year-old Male with BRAF-mutated PTC with Anaplastic Transformation	MODERATOR: Michael Tuttle, MD
	Initial and Dynamic Risk Stratification: Using Tumor Volume Doubling Times and FDG PET to Predict Outcomes in the Setting of Distant Metastases	Mona Sabra, MD
	Novel Systemic Therapy Options for RAI Refractory and Anaplastic Thyroid Cancer	Alan Ho, MD
	Understanding Patient and Family Safety Issues That are Critical to Effective Implementation of an Outpatient RAI Therapy Program	Lawrence Dauer, PhD
	Utilizing Treatment Algorithms for the Management of Expected Dermatological Toxicities to Multitargeted Kinase Inhibitors	Lauren Evans, MSN, OCN, CCRP
2:10 PM	<b>Colorectal Cancer</b>	
	CASE PRESENTATION: 68-year-old Female with Metastatic Colon Cancer, Mismatch-repair Proficient, RAS Wild-type, BRAF V600E-mutated	MODERATOR: Leonard Saltz, MD
	Molecular Profiling of Colorectal Cancer: The Impact of MSK IMPACT	Rona D. Yaeger, MD
	Systemic Therapy for Local-regional Disease and Local-regional Therapy for Metastatic Disease	Andrea Cercek, MD
	Operational Aspects of Non-operative Management in Locally Advanced Rectal Cancer	J. Joshua Smith, MD, PhD
	ERAS Protocols for Colorectal Cancers	John S. Park, MD
2:55 PM	Break	
3:20 PM	<b>Lung Cancers</b>	
	CASE PRESENTATION: 56-year-old Female, Former Smoker with Stage IV Lung Cancer to Brain and Adrenal Gland	MODERATOR: Bernard Park, MD
	Treatment of Oligometastatic Non-small Cell Lung Cancer	Helena A. Yu, MD
	Lung Cancer Stigma	Smita Banerjee, PhD
	Role of Minimally Invasive Surgery in the Multimodality Treatment of Advanced Lung Cancer	Mario Katigbak, MD
	Optimizing Antiemetic Use	John Timoney, PharmD
	Emerging Role of Liquid Biopsy	Bob Li, MD, MPH
4:05 PM	<b>Breast Cancer</b>	
	CASE PRESENTATION: 49-year-old Female with Unknown Family History, History of 1.1 cm Node-negative, High-grade Triple-negative Primary Breast Cancer s/p Lumpectomy and Radiation Therapy; Now with a Contralateral Primary, Also Triple-negative, and Metastatic Disease	MODERATOR: Larry Norton, MD
	Breast Cancer Treatment and Parp Inhibitors	Tiffany A. Traina, MD
	MSK RISE Program	Melissa Pilewskie, MD
	Breast Imaging	Elizabeth Morris, MD
	Proton Therapy for Breast Cancer	Marcio Fagundes, MD
	Patient-reported Outcomes and Survival	Peter Yu, MD
4:50 PM	<b>Concluding Remarks</b>	David G. Pfister, MD
5:00 PM	<b>Networking Reception</b> Join course faculty for a networking reception in the lobby of Zuckerman Research Center immediately following the course from 5:00-6:00 pm.	

# Registration

Physicians (MDs, PhDs and DOs)	\$250
Residents, Fellows, Nurses and Other Healthcare Providers	\$150
Industry Professionals**	\$440

## Register Online: [mskcc.org/PersonalizedOncology](https://mskcc.org/PersonalizedOncology)

### Discounted Rate for MSK Alliance Members

MSK offers a discounted rate to all MSK Alliance members to attend a CME course. Please contact [cme@mskcc.org](mailto:cme@mskcc.org) for more information or a promotion code.

### REGISTRATION DETAILS

Registration includes continental breakfast, lunch, and refreshment breaks. Please contact [cme@mskcc.org](mailto:cme@mskcc.org) at least one week prior to the course if you have any special dietary needs.

- **30% Discounted Rate for MSK Alumni:** MSK offers a 30% discounted rate to all MSK Alumni and MSK Alliance members to attend a CME course. Please contact [cme@mskcc.org](mailto:cme@mskcc.org) for a promotion code or more information.
- **MSK Staff Registration:** Registration is complimentary for MSK staff. However, you must register online: [mskcc.org/PersonalizedOncology](https://mskcc.org/PersonalizedOncology)

### ACCREDITATION STATEMENT

This activity has been planned and implemented in accordance with the accreditation requirements and policies of the Accreditation Council for Continuing Medical Education (ACCME) through the joint providership of Memorial Sloan Kettering Cancer Center, Hartford Healthcare Cancer Institute, Lehigh Valley Health Network, and Miami Cancer Institute of Baptist Health South Florida. Memorial Sloan Kettering Cancer Center is accredited by the Accreditation Council for Continuing Medical Education to provide continuing medical education for physicians.

### AMA CREDIT DESIGNATION STATEMENT

MSK designates this live activity for a maximum of **7.00 AMA PRA Category 1 Credit(s)**<sup>™</sup>. Physicians should only claim credit commensurate with the extent of their participation in the activity.

### ABIM MOC STATEMENT

Successful completion of this CME activity, which includes participation in the evaluation component, enables the participant to earn up to **7.00 Medical Knowledge and Practice Assessment MOC points** in the American Board of Internal Medicine's (ABIM) Maintenance of Certification (MOC) program. Participants will earn MOC points equivalent to the amount of CME credits claimed for the activity. It is the CME activity provider's responsibility to submit participant completion information to ACCME for the purpose of granting ABIM MOC credit

### FACULTY DISCLOSURE

It is the policy of MSK to make every effort to insure balance, independence, objectivity, and scientific rigor in all continuing medical education activities which it provides as an ACCME accredited provider. In accordance with ACCME guidelines and standards, all faculty participating in an activity provided by MSK are expected to disclose any significant financial interest or other relationship with the manufacturer(s) of any commercial product(s) and/or provider(s) of commercial services which are discussed by the faculty members in an educational presentation. As required by the ACCME, when an unlabeled use of a commercial product or an investigational use not yet approved for any purpose is discussed during an educational activity, MSK requires the speaker to disclose that the product is not labeled for the use under discussion or that the product is still investigational.

\*Industry professionals may attend CME activities for their own education. Marketing, sales, and promotion of products and services is strictly prohibited at MSK CME activities.



### CONFERENCE LOCATION

Memorial Sloan Kettering Cancer Center  
Mortimer B. Zuckerman Research Center  
417 East 68th Street  
New York, NY 10065

### ACCOMMODATIONS

If you'll be traveling to MSK from out of town, we recommend that you plan your overnight stays as soon as possible. To make the planning a little easier, we've negotiated special rates and amenities for patients, families, and caregivers at select hotels in Manhattan. For information on hotels in the area of MSK with discounted rates, please visit: [mskcc.org/cme](https://mskcc.org/cme).

### CONTACT

Memorial Sloan Kettering Cancer Center  
Office of Continuing Medical Education

W: [mskcc.org/cme](https://mskcc.org/cme)

E: [cme@mskcc.org](mailto:cme@mskcc.org)

Join the conversation:

**#MSKAllianceCME**

f /MSKCME

t @MSKCME

in MSK CME LinkedIn Group