



Mercury Elite Pro mini

ASSEMBLY MANUAL & USER GUIDE



TABLE OF CONTENTS

1. INTRODUCTION	1
1.1 MINIMUM SYSTEM REQUIREMENTS	
1.1.1 Mac® Requirements	
1.1.2 PC Requirements	
1.2 PACKAGE CONTENTS	
1.3 ABOUT THIS MANUAL	
1.4 REAR VIEW	
1.4.1 Rear Features	
2. DEVICE SETUP	4
2.1 QUICK START	
2.2 ASSEMBLY	
3. SUPPORT RESOURCES	8
3.1 FORMATTING	
3.2 UNMOUNTING DRIVES	
3.3 TROUBLESHOOTING	
3.4 ABOUT DATA BACKUP	
3.5 ONLINE RESOURCES	
3.6 CONTACTING TECHNICAL SUPPORT	

INTRODUCTION

1.1 MINIMUM SYSTEM REQUIREMENTS

1.1.1 Mac® Requirements

- FireWire: OS X® 10.2 or later
- USB 3.0: OS X 10.3 or later¹
- eSATA: OS X 10.3 or later

1.1.2 PC Requirements

- FireWire: Windows® XP SP2 or later
- USB 3.0: Windows XP SP2 or later¹
- eSATA: Windows XP SP2 or later

1.2 PACKAGE CONTENTS



Mercury Elite Pro mini



USB 3.0 cable
(Standard-A to Micro-B)



FireWire 800 (1394b)
9-9 pin cable²



eSATA Cable³

1: USB 3.0 ports are backward compatible with USB 2.0 connections.

2: FireWire 800 cable included only with models that include FireWire 800 ports.

3: eSATA cable included only with models that include eSATA ports.

Not Pictured: Inside the Mercury Elite Pro mini is a bag of four Phillips screws.

1.3 ABOUT THIS MANUAL

Firmware, images, and descriptions may vary slightly between this manual and the unit shipped. Functions and features may change depending on the firmware version. Please visit the product webpage for the most recent specifications.

1.4 REAR VIEW

The Mercury Elite Pro mini comes in two port configurations:

USB 3.0 / Firewire 800



USB 3.0 / eSATA



1.4.1 Rear Features

- 1. USB 3.0 port** — Attach the included USB 3.0 (Standard-A to Micro-B) cable here.
- 2. FireWire 800 ports** — Attach the included FireWire 800 cable here. Use the other FireWire 800 port to daisy-chain other FireWire 800 devices. **NOTE:** Any device daisy-chained device must use its own power supply. The Mercury Elite Pro mini cannot bus-power other devices.
- 3. eSATA port** — Attach the included eSATA cable here. **NOTE:** The connector is keyed to use one specific orientation. If the connector does not go in smoothly, do not force it. Flip it over and re-insert it in the port.
- 4. On/off switch** — Turn on and off the Mercury Elite Pro mini here.
- 5. Power input** — Connect the optional 5V power adapter here (sold separately).

IMPORTANT:

- The Mercury Elite Pro mini is designed to receive all needed power through the USB or FireWire cable, therefore a separate power adapter is not necessary and not included. For the few situations in which external power may be necessary, an optional 5V power adapter is available at: <http://eshop.macsales.com/item/owc/motgpwr/>
- If the Mercury Elite Pro mini is daisy-chained to another FireWire device instead of being connected directly to a computer, you must use the optional 5V power adapter. Attempting to bus-power the Mercury Elite Pro mini using the FireWire port of another device could cause damage to one or both devices and should not be attempted.
- Even when the optional 5V power adapter is not connected, the on/off switch must be in the "on" position to use the Mercury Elite Pro mini.
- Only one interface (USB, FireWire, or eSATA) at a time can be used.
- For the safe removal of your drive and to assure that no data is lost, always eject or unmount the drive from your OS before disconnecting or powering off.

DEVICE SETUP

2.1 QUICK START

If you purchased the Mercury Elite Pro mini as an empty enclosure, proceed to **Section 2.2 - Assembly**. If you purchased the enclosure with a drive already installed, the OWC Drive Guide formatting utility has been installed to assist with the setup. Follow the steps below to use the OWC Drive Guide to format the drive for Mac (OS X 10.4 and later) or Windows (XP and later).

1. Connect the Mercury Elite Pro mini to your computer using the proper cable. If you prefer to use a different formatting utility, do so at this time and skip the rest of these instructions.
2. Your drive will show up as "OWC SETUP". Open your drive to view its contents.
3. Double-click the OWC Drive Guide application.
4. Follow the simple on-screen instructions to complete the formatting process.
5. Once the formatting is finished the drive is ready to use.

2.2 ASSEMBLY

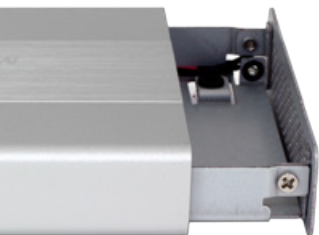
The Mercury Elite Pro mini comes in two configurations, as shown in **Section 1.4**: one model with a single USB 3.0 port and two FireWire 800 ports, and a model with one USB 3.0 port and one eSATA port. The pictures in the following assembly instructions show the latter, but the process is exactly the same for all three models.

NOTICE! If your Mercury Elite Pro mini was purchased with a drive already installed, opening the case **will void your warranty**. Once the warranty period expires, if you would like to open the case at that time, you may do so.

1. Use a Phillips screwdriver to remove the two screws at the rear of the enclosure (circled below in red).

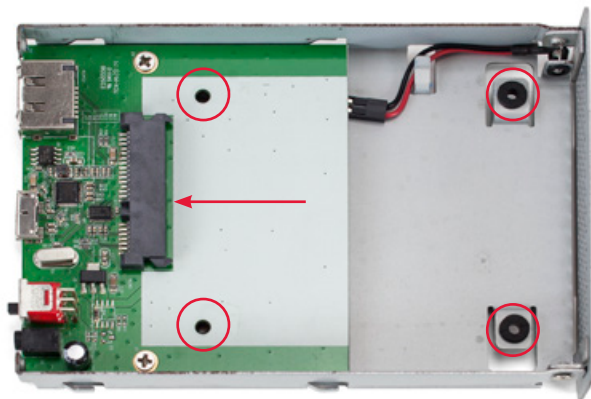


2. Tilt the Mercury Elite Pro mini up at the front to allow the back plate to fall free, as shown below. If the back plate does not immediately fall free, you can push gently on the on/off switch to disengage the ports from the back plate and allow it to come off.

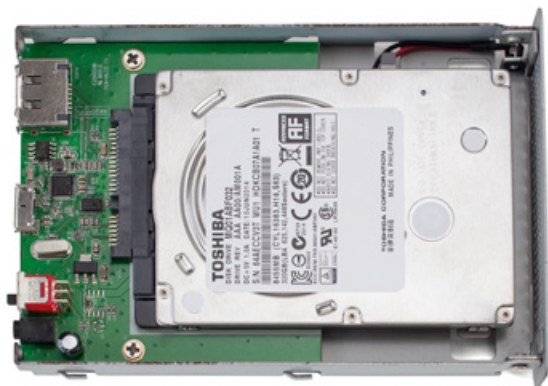


3. Gently push on the inner chassis that was exposed by removing the back plate. The inner chassis should slide out of the outer enclosure. Once there is enough room at the front, as shown to the left, you can pull on the front of the inner chassis to remove it fully.

4. Once the inner chassis has been removed from the outer enclosure (shown below), note the SATA connector (arrow). There are also four screw holes (circled in red): two through the metal on the right and two through the green circuit board on the left.



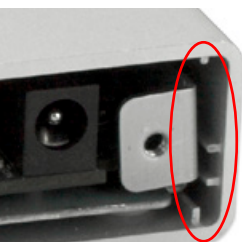
5. Place your drive in the inner chassis as shown below. Press the drive toward the rear of the inner chassis to make sure that the drive is fully seated in the SATA connector.



6. Use one hand to hold the drive down, then turn over the inner chassis. There are four screw holes on the bottom of the inner chassis (circled in red below).

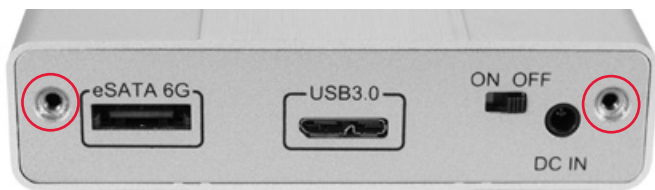


7. Using a Phillips screwdriver, insert the four included screws into the screw holes to fasten the drive to the inner chassis (shown below). When this is done, turn the inner chassis back over.



8. Slide the inner chassis back into the outer enclosure. Note that the inner chassis can slide in either end of the outer enclosure, but the rails on one end of the outer chassis are notched, as shown to the left. This allows the back plate to sit flush when attached.

9. Using a Phillips screwdriver, attach the back plate as shown to complete the assembly.



SUPPORT RESOURCES

3.1 FORMATTING

For additional formatting information, please visit:
<http://www.macsales.com/format>

3.2 UNMOUNTING DRIVES

To properly unmount any connected drives from your computer, you need to follow a few simple steps.

OS X:

There are two main methods to unmount disks with Mac OS X systems. Either drag the icon for the disk you wish to unmount to the trash can, or right-click the disk icon on the desktop, then click "Eject".

Windows:

1. Go to the System Tray (located in the lower right corner of your screen). Click on the "Eject" icon (a small green arrow over a hardware image).
2. A message will appear, detailing the devices that the "Eject" icon controls, i.e., "Safely remove..." Click on this prompt.
3. You will then see a message that says, "Safe to Remove Hardware." It is now safe to disconnect the Mercury Elite Pro mini from the computer.

3.3 TROUBLESHOOTING

Begin your troubleshooting by verifying that both ends of your cables are properly plugged into the computer and the Mercury Elite Pro mini. If the Mercury Elite Pro mini is still not working properly, try connecting to another interface such as the USB connection and see if the device works properly. You can also connect the Mercury Elite Pro mini to a different computer.

In rare instances, the power being provided through the interface cable may not be sufficient to power the Mercury Elite Pro mini, depending on the computer you are using and the hard drive or SSD inside the Mercury Elite Pro mini. An optional 5V power adapter is available at: <http://eshop.macsales.com/item/owc/motgpwr/>

If problems persist, please visit www.macsales.com/faq/ for answers to frequently asked questions, or check **Section 3.6** to contact technical support.

3.4 ABOUT DATA BACKUP

To ensure that your files are protected and to prevent data loss, we strongly suggest that you keep two copies of your data: one copy on your Mercury Elite Pro mini and a second copy on either your internal drive or another storage medium, such as an optical backup, or on another external storage unit. Any data loss or corruption while using the Mercury Elite Pro mini is the sole responsibility of the user, and under no circumstances will Other World Computing be held liable for compensation or the recovery of any lost data.

3.5 ONLINE RESOURCES

To access our online help resources, including things like FAQs, formatting tips, and a step-by-step walkthrough of our recommended method for migrating your data from an old drive to a new one, please visit: http://eshop.macsales.com/tech_center/

3.6 CONTACTING TECHNICAL SUPPORT

8AM - 8PM (CT) Monday - Friday

9AM - 4PM (CT) Saturday



By telephone: (800) 275-4576 (North America only)
International customers please call: (815) 338-8685



Live chat is available during normal business hours:
www.macsales.com/livechat



Or you can email us. Submit your email at:
www.macsales.com/ts_email

Changes:

The material in this document is for information purposes only and subject to change without notice. While reasonable efforts have been made in the preparation of this document to assure its accuracy, Other World Computing and its officers and employees assume no liability resulting from errors or omissions in this document, or from the use of the information contained herein. Other World Computing reserves the right to make changes or revisions in the product design or the product manual without reservation and without obligation to notify any person of such revisions and changes.

FCC Statement:

Warning! Modifications not authorized by the manufacturer may void the user's authority to operate this device.

NOTE: This equipment has been tested and found to comply with the limits for a Class A digital device, pursuant to Part 15 of the FCC Rules. These limits are designed to provide reasonable protection against harmful interference when the equipment is operated in a commercial environment. This equipment generates, uses, and can radiate radio frequency energy and, if not installed and used in accordance with the instruction manual, may cause harmful interference with radio communications. Operation of this equipment in a residential area is likely to cause harmful interference, in which case the user will be required to correct the interference at his own expense.

NOTE: This equipment has been tested and found to comply with the limits for a Class B digital device, pursuant to Part 15 of the FCC Rules. These limits are designed to provide reasonable protection against harmful interference in a residential installation. This equipment generates, uses and can radiate radio frequency energy and, if not installed and used in accordance with the instructions, may cause harmful interference to radio communications. However, there is no guarantee that interference will not occur in a particular installation. If this equipment does cause harmful interference with radio or television reception, which can be determined by turning the equipment off and on, the user is encouraged to try to correct the interference by one or more of the following measures:

- Reorient or relocate the receiving antenna.
- Increase the separation between the equipment and receiver.
- Connect the equipment to an outlet on a circuit different from that to which the receiver is connected.

Health And Safety Precautions:

- Use proper anti-static precautions while performing the installation of your hard drives into this drive enclosure. Failure to do so can cause damage to your drive mechanisms and/or the hard drive enclosure.
- Read this user guide carefully and follow the correct procedures when setting up the device.
- Do not attempt to disassemble or modify the device. To avoid any risk of electrical shock, fire, short-circuiting or dangerous emissions, never insert any metallic object into the device. If it appears to be malfunctioning, contact Other World Computing technical support.
- Never expose your device to rain, or use it near water or in damp or wet conditions. Never place objects containing liquids on the drive, as they may spill into its openings. Doing so increases the risk of electrical shock, short-circuiting, fire or personal injury.

General Use Precautions:

- To avoid damage, do not expose the device to temperatures outside the range of 5° C to 40° C (41° F to 104° F).
- Always unplug the device from the electrical outlet if there is a risk of lightning or if it will be unused for an extended period of time. Otherwise, there is an increased risk of electrical shock, short-circuiting or fire.
- Do not use the device near other electrical appliances such as televisions, radios or speakers. Doing so may cause interference which will adversely affect the operation of the other products.
- Do not place the device near sources of magnetic interference, such as computer displays, televisions or speakers. Magnetic interference can affect the operation and stability of hard drives.
- Do not place heavy objects on top of the device.
- Protect your device from excessive exposure to dust during use or storage. Dust can build up inside the device, increasing the risk of damage or malfunction.
- Do not block any ventilation openings on the device. These help to keep the device cool during operation. Blocking the ventilation openings may cause damage to the device and cause an increased risk of short-circuiting or fire.
- For up-to-date product and warranty information, please visit the product webpage.

Copyrights and Trademarks:

© 2015 Other World Computing, Inc. All rights reserved. No part of this publication may be reproduced, stored in a retrieval system, or transmitted in any form or by any means, electronic, mechanical, photocopying, recording or otherwise, without the prior written consent of Other World Computing, Inc. Other World Computing and OWC are trademarks of New Concepts Development Corporation, registered in the U.S. Patent and Trademark Office and/or in Canada. The OWC logo, Other World Computing logo, Mercury Elite, and OWC Drive Guide are trademarks of New Concepts Development Corporation. Apple, Firewire, Mac, and OS X are trademarks of Apple Inc., registered in the United States and/or other countries. Windows and Windows Vista are either registered trademarks or trademarks of Microsoft Corporation in the United States and/or other countries. USB is a registered trademark of USB Implementers forum, Inc. Other marks may be the trademark or registered trademark property of their owners.