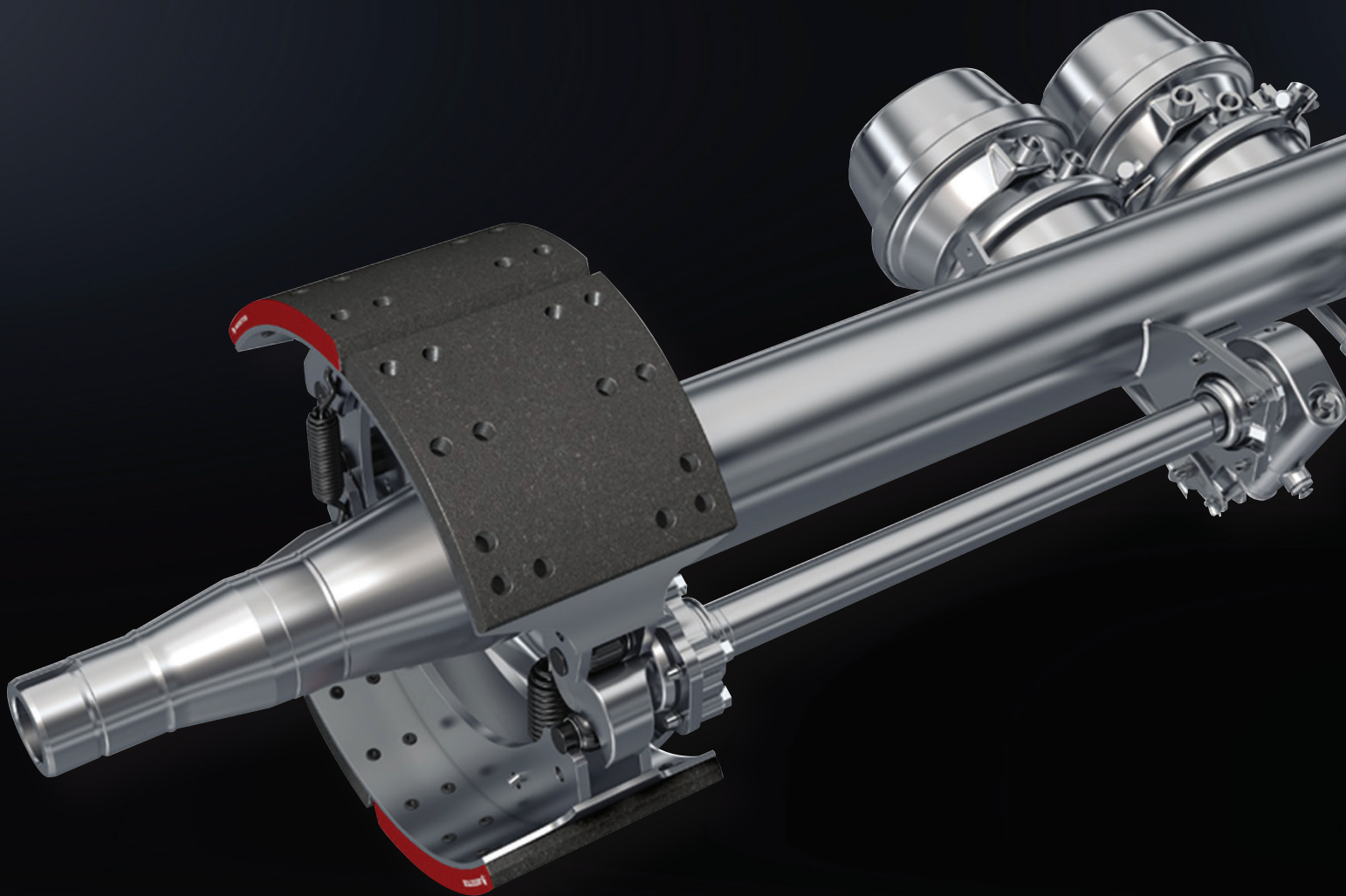


MERITOR® TRAILER AXLES AND WHEEL-END COMPONENTS



TRAILER-PERFORMANCE TECHNOLOGY BASED ON A CENTURY OF EXPERIENCE

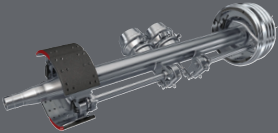
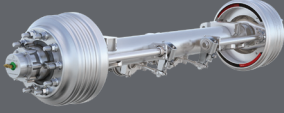
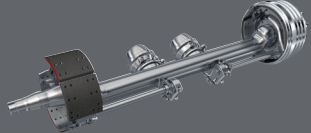
Meritor® has the vision, expertise and experience to provide you with the most advanced and reliable trailer axles at the lowest cost of ownership. Our technology leadership has been clearly demonstrated by over 100 years of manufacturing to meet the global needs of the commercial vehicle industry, with more than 10 million trailer axles manufactured.

With a broad product line that meets nearly any specification, Meritor commercial vehicle trailer axles have become the most specified in the world. Made in North America, Meritor industry-standard trailer axles can be found on applications ranging from dry and refrigerated vans to liquid tankers, dry-bulk transporters, platform trailers, auto carriers, dump chassis and specialty trailers.



STANDARD AND CUSTOM CONFIGURATIONS FOR ADDED PERFORMANCE AND DURABILITY

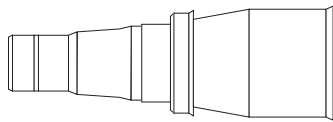
The Meritor® trailer axle line has the right products to fit your application needs. With a portfolio that can meet the requirements of heavy-duty commercial business through a complete line of standard and optional axle tracks, gross-weight ratings and spindles, Meritor has a solution for nearly every application, as well as custom axles that can be specified to meet any unique requirement.

AXLE SPECIFICATIONS			
			
	Straight-Beam Axles	MTec6 Axles	Crank Axles
Spindle types available	TN, TQ, TP, TR	TN, TP	TP, TQ, TR
Ratings	20,000-30,000 lbs.	22,500 lbs.	20,000 lbs.
Axle wall thickness	.5" / .625" / .75"	.296"	.625" / .75"
Track	30"-104"	71.5"-77.5"	71.5"-79.5"
Assembly weight	271-381 lbs.	264-270 lbs.	340-353 lbs.
Drop	NA	NA	3.375"
Brake/wheel-end options	Variety of Meritor brakes and wheel-ends	Variety of Meritor brakes and wheel-ends	Variety of Meritor brakes and wheel ends

Meritor trailer axles are offered in a variety of spindle types including global standard TN, TP, TQ or TR Series spindles.

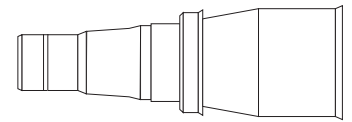
TN Series Axles

These economical, versatile axles are ideal for a wide range of applications. They feature integral spindles, induction hardening of critical areas, and integral stamped spiders to save weight, add durability and increase bottom-line performance. Rating: 22,500 lbs.



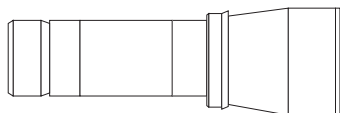
TQ Series Axles

These axles are designed and built to handle the severe torsional forces produced by air-ride suspensions and increased downward force exerted by heavier-than-normal cargos. TQ axle walls are thicker, enabling them to withstand the twisting stress caused by roll inputs from trailing-arm air-ride suspensions. Ratings: 25,000 lbs. and 30,000 lbs.



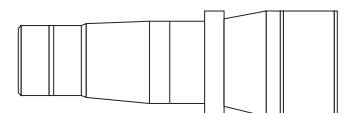
TP Series Axles

The parallel-spindle design reduces wheel-end component part inventories and meets the demands of wide-base single tires. TP inner and outer axle bearings are the same size and most brake parts are interchangeable with those featured on Meritor drive axles. Ratings: 22,500 lbs., 25,000 lbs. and 30,000 lbs.



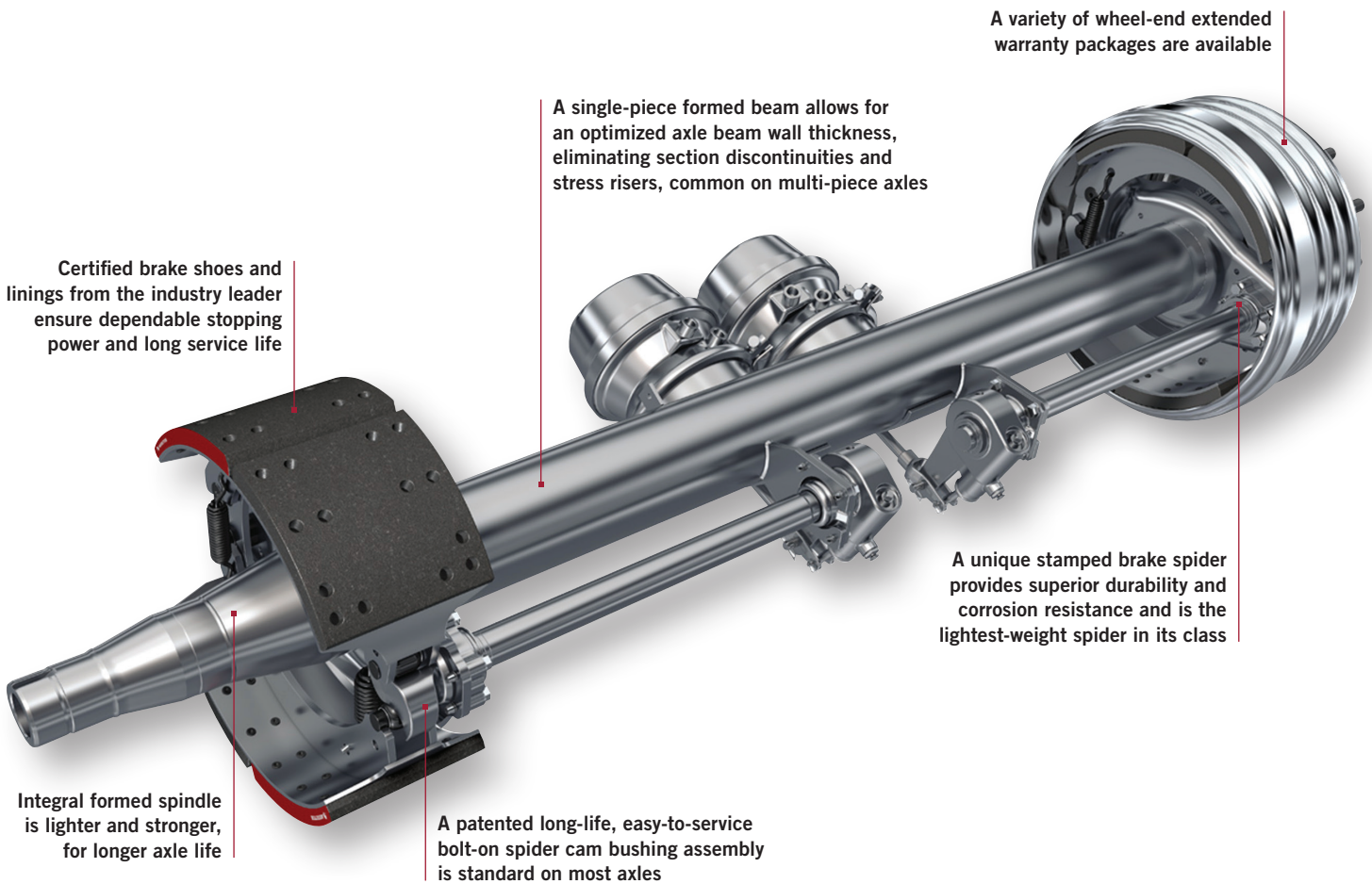
TR Series Axles

TR Series axles are designed and engineered for trailer and tag applications with spindles and brakes to match tractor drive axles. Ratings: 22,500 lbs., 25,000 lbs. and 30,000 lbs.

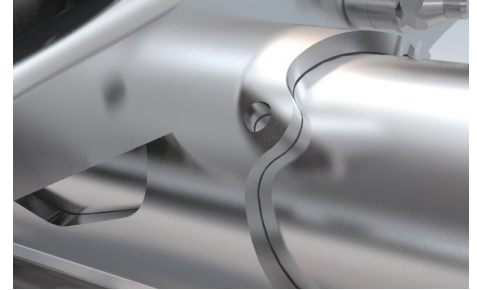
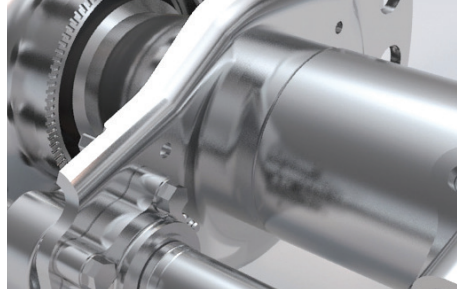


ADVANTAGE BY DESIGN

Meritor® axles continue to set the standard in the commercial heavy-duty trailer market. Every axle is designed to deliver benefits that are important to modern fleets: light weight, durability and serviceability. Based on the experience acquired by building more than 10 million axles, Meritor considers how every part of the axle affects delivery of maximum life at minimal cost of ownership.



BENEFITS OF OWNERSHIP



Lighter By Design. More Cargo-Carrying Capacity.

- A one-piece design manufactured with uniform wall thickness to reduce weight and improve payload capacity
- Brake spiders are stamped to meet precise weight and size specifications
- Automatic Slack Adjusters (ASAs) are almost a half-pound lighter than other designs, further reducing total weight

Durable Components. Long Life. Less Downtime.

- Axles are made from cast-welded steel for durability and manufactured with a uniform thickness over the entire tube
- Advanced manufacturing processes control strength and weight to within 1 percent of specs vs. other axle designs at plus or minus 10 percent
- One-piece axle has an integral spindle with five times the life in cornering and side-skid situations when compared with welded spindles
- Spindles feature rolled threads for tighter control and stronger connections during the life of the axle
- Bolt-on spider bushing retainers with self-lubricated powder metal bushings offer longer axle life than standard bushings
- Additional heat-treating on S-cam wear surfaces extends service life
- Brake-mounting hardware includes patented barrel-shaped brake rollers, offering more even wear and extended lining service life

Serviceable Design. Lower Maintenance Costs.

- Patented bolt-on spider bushing retainer allows removal and servicing of camshaft components without removal of the hub, reducing downtime and maintenance costs
- Quick-change brake shoes on Meritor® Q+™ drum brakes reduce maintenance and downtime
- ASAs keep brakes in adjustment, reducing maintenance and optimizing brake shoe life
- ASAs designed with fewer parts to increase durability and simplify maintenance

WHEEL-END OPTIONS

AxlePak™

Optional AxlePak wheel-ends and accessories are factory-assembled, dressed axle bundles offering matched components for single-source quality and convenience. Along with a choice of hubs, drums and Reduced Stopping Distance (RSD)-compliant brakes, bearings and wheel-ends, each AxlePak bundle offers a choice of industry-leading extended 5- or 7-year warranties covering parts and labor.



ChassiPak™

Designed for the intermodal industry, Meritor ChassiPak bundles our most popular trailer products into one package that meets new stringent federal regulations without sacrificing performance or efficiency.

Meritor® Hubs

Made from high-strength ductile iron for durability and lowest lifecycle cost, our hubs are designed to reduce maintenance costs and downtime. Optional PreSet® hubs offer extended durability and warranty options.



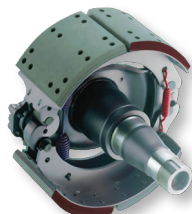
SteelLite X30™ Brake Drums



This drum has an exclusive one-piece roll-formed steel shell for superior concentricity, improved balance and reduced weight. The X30 delivers superior payload capacity and fuel economy without sacrificing strength.

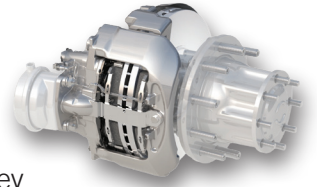
Q+™ Drum Brakes

Built for performance and dependability, our Q+ brakes feature spring-loaded seals for longer lubrication intervals and a unique S-cam profile for increased lining thickness, extended wear and improved heat dissipation. Best-in-class corrosion resistance is standard on the Q+ line. Meritor Q+ brakes meet RSD standards established by FMVSS 121.

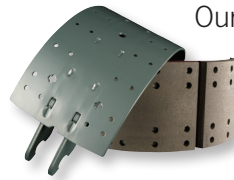


EX+™ Air Disc Brakes

Ideal for a wide range of axle ratings, RSD-compliant EX+ brakes have superior resistance to fade during frequent and prolonged use, they offer increased pad volume for longer and more consistent performance over time. Meritor's twin-piston design ensures higher clamping force, better force distribution and maximum pad life. An optional in-cab electronic warning indicator helps ensure that EX+ brakes always operate optimally.



Quality Brake Linings



Our brake linings provide superior wear performance and a stable friction platform for optimum stopping capability. Optional breakthrough PlatinumShield™ II coating conquers rust-jacking and extends shoe value by protecting the brake table from rust and destructive particulate buildup, which prevents the need for relining.

Automatic Slack Adjusters (ASAs)



With hundreds of billions of service miles, Meritor ASAs are used by top fleets to ensure that brakes are operating within optimal specifications and according to federal regulations. Designed to be lighter-weight and to require minimal maintenance, Meritor ASAs keep drum brakes in proper adjustment to maximize brake life and avoid out-of-service citations.

Meritor Tire Inflation System (MTIS™) by P.S.I.

The MTIS by P.S.I. keeps all tires properly inflated to increase tire life, improve fuel economy and reduce tire service calls – it helps fleets meet the FMCSA's CSA safety regulation.



MOVE FORWARD WE'VE GOT YOUR BACK



Meritor® trailer components provide the total performance you need to keep your business moving ahead, while Meritor backs you with unsurpassed total service and tech support. Here are just a few of the advantages:

Meritor DriveForce™

Our North American field support team handles your commercial vehicle and trailer needs with a combination of sales, service and aftermarket representatives. DriveForce members offer a total-vehicle perspective. Each has more than 27 years of industry experience, on average, and is equipped with the tools to drive customer profitability and satisfaction. For more information, visit meritor.com/driveforce.



OnTrac Customer Service Center

Meritor's OnTrac Customer Service Center is ready to assist you at **866-OnTrac1** (866-668-7221) – day and night, weekdays and weekends. Expert representatives

provide diagnostics, technical support, warranty mediation and much more.

Meritor Mobile™

This handy and comprehensive mobile app puts all of the Meritor trailer suspension and component information at your fingertips, including maintenance manuals, parts books, safety systems and technical content for repair technicians.

Meritor BullPen

The Meritor BullPen is all about training. This web page is designed to enhance the knowledge and service needs of technicians, dealer and aftermarket sales professionals, drivers and warranty administrators, and it's available to you 24/7/365 at meritorbullpen.com.

Genuine OEM-Quality Aftermarket Parts

Meritor maintains a North American network of more than 3,000 independent distributors and 2,300 original equipment (OE) dealer locations, providing genuine OE and all-makes parts to ensure that original performance standards are met. We also offer remanufactured components.

Meritor Trailer Components Warranty Coverage

All Meritor trailer suspensions and components are backed by Meritor's industry-competitive warranty and supported by our industry-leading online warranty claims system. Extended warranty packages are available. For complete details, see meritor.com.



Vehicle models, brands and names depicted herein are the property of their respective owners and are not in any way associated with Meritor, Inc. or its affiliates.



Meritor Heavy Vehicle Systems, LLC
2135 West Maple Road
Troy, Michigan 48084 USA

Call 1-866-668-7221
or visit meritor.com

©2022 Meritor, Inc.
Litho in USA, SP-1498
Revised 6/22