



Mertik Control System
Troubleshooting Guide
GAS FIRES & STOVES

This Troubleshooting guide is supplementary to, and must be used in conjunction with, the Instructions for Use, Installation & Servicing supplied with the appliance.

The booklet provides a range of solutions to some of the problems that are experienced with Gas appliances. However, as each appliance and installation is different, it is not possible to provide solutions to every problem and a suitably competent person may be required to inspect the issue in person.

If the problem persists, please contact:

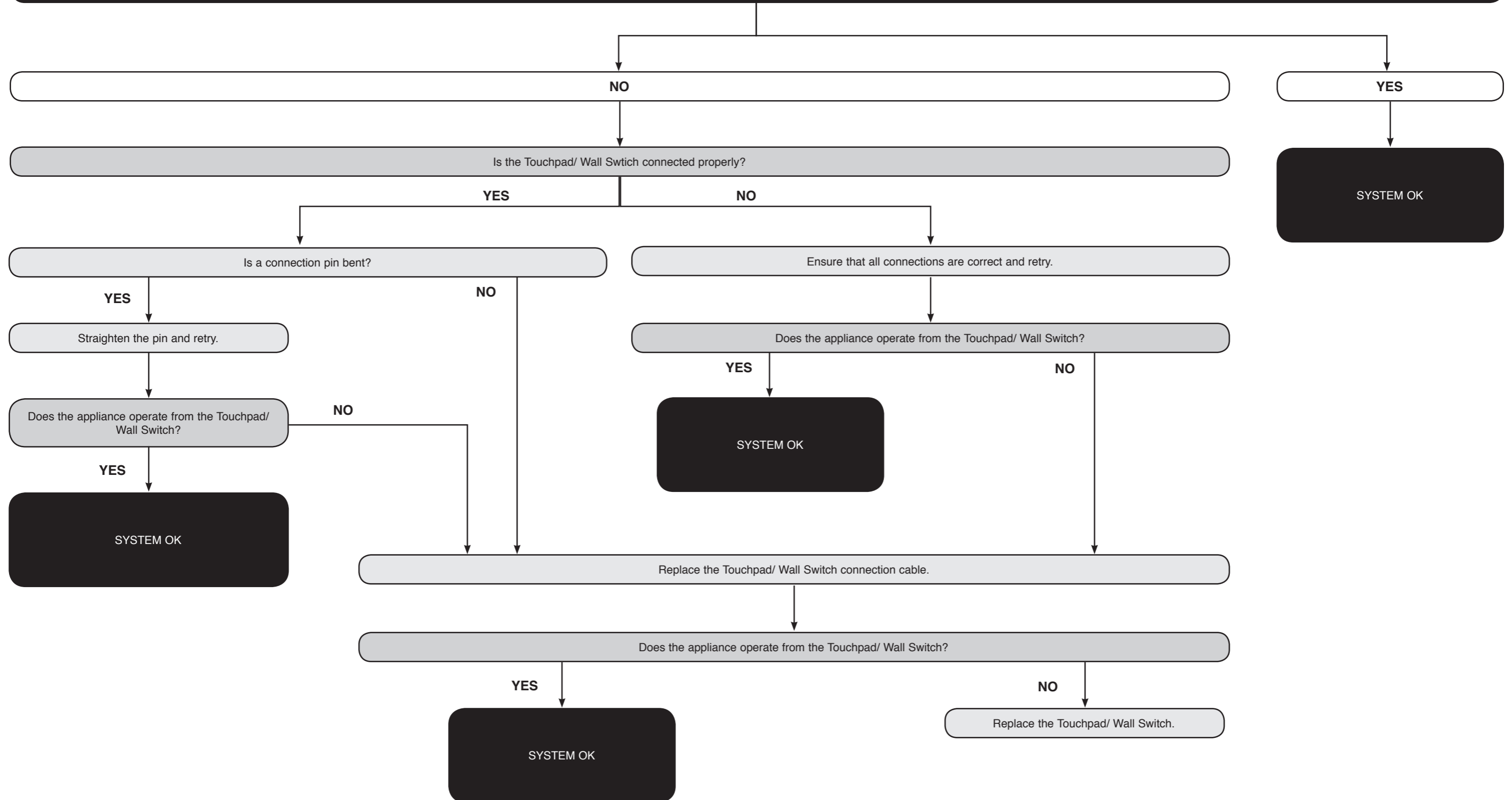
Gazco Technical Customer Services
Email: technicalservices@gazco.com

CONTENTS

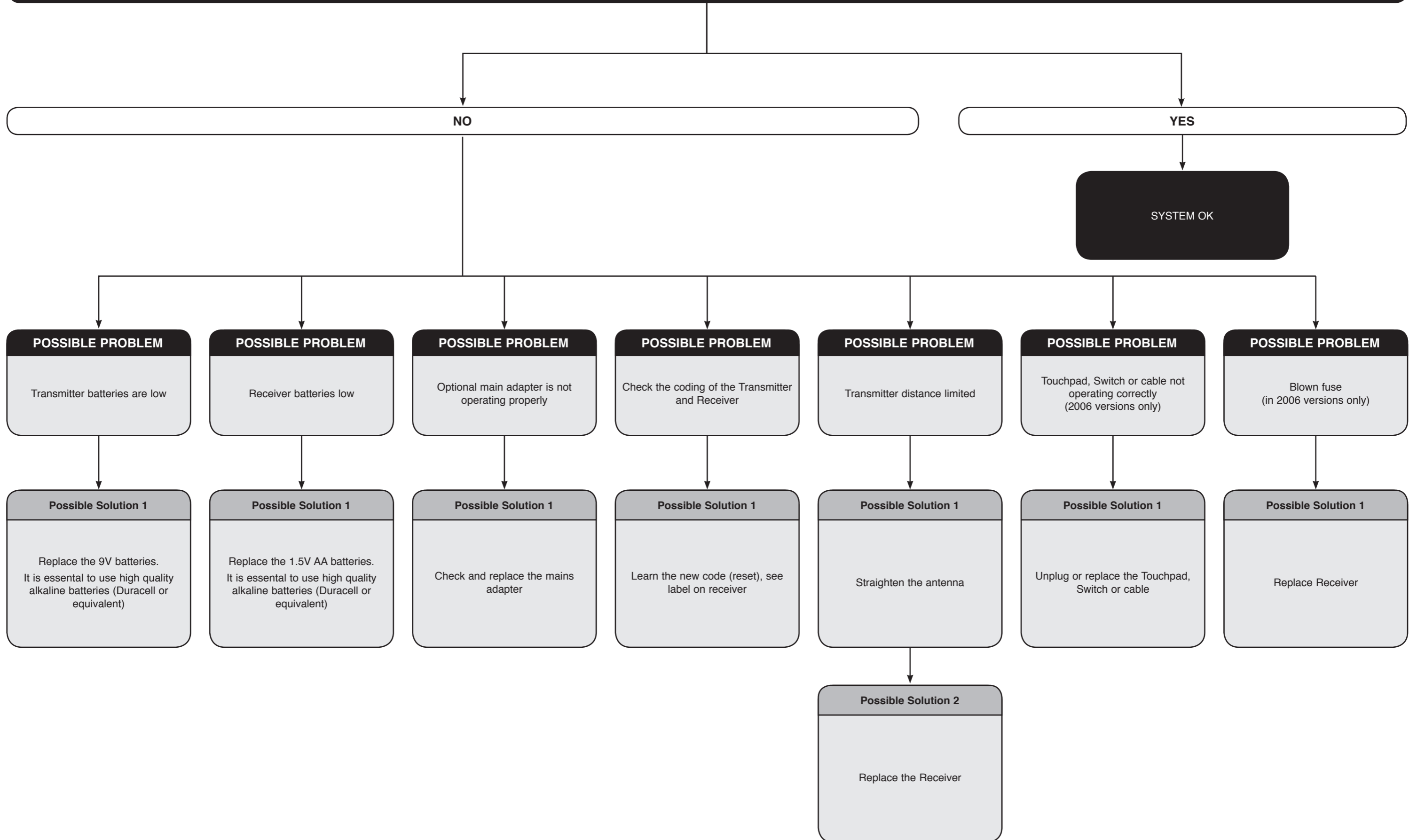
1: Touchpad/ Wall Switch - Troubleshooting 1	page 3
2: Handset - Troubleshooting 2.....	page 4
3: Troubleshooting 3.....	page 5
4: Troubleshooting 4.....	page 6
5: Troubleshooting 5.....	page 7
6: Troubleshooting 6.....	page 8
7: Troubleshooting 7.....	page 9
8: Troubleshooting 8.....	page 10
9: Troubleshooting 9.....	page 11

Troubleshooting 1: MERTIK - Touchpad/ Wall Switch

DOES THE APPLIANCE LIGHT FROM THE TOUCHPAD/ WALL SWITCH? Press ON button on Touchpad / Wall Switch

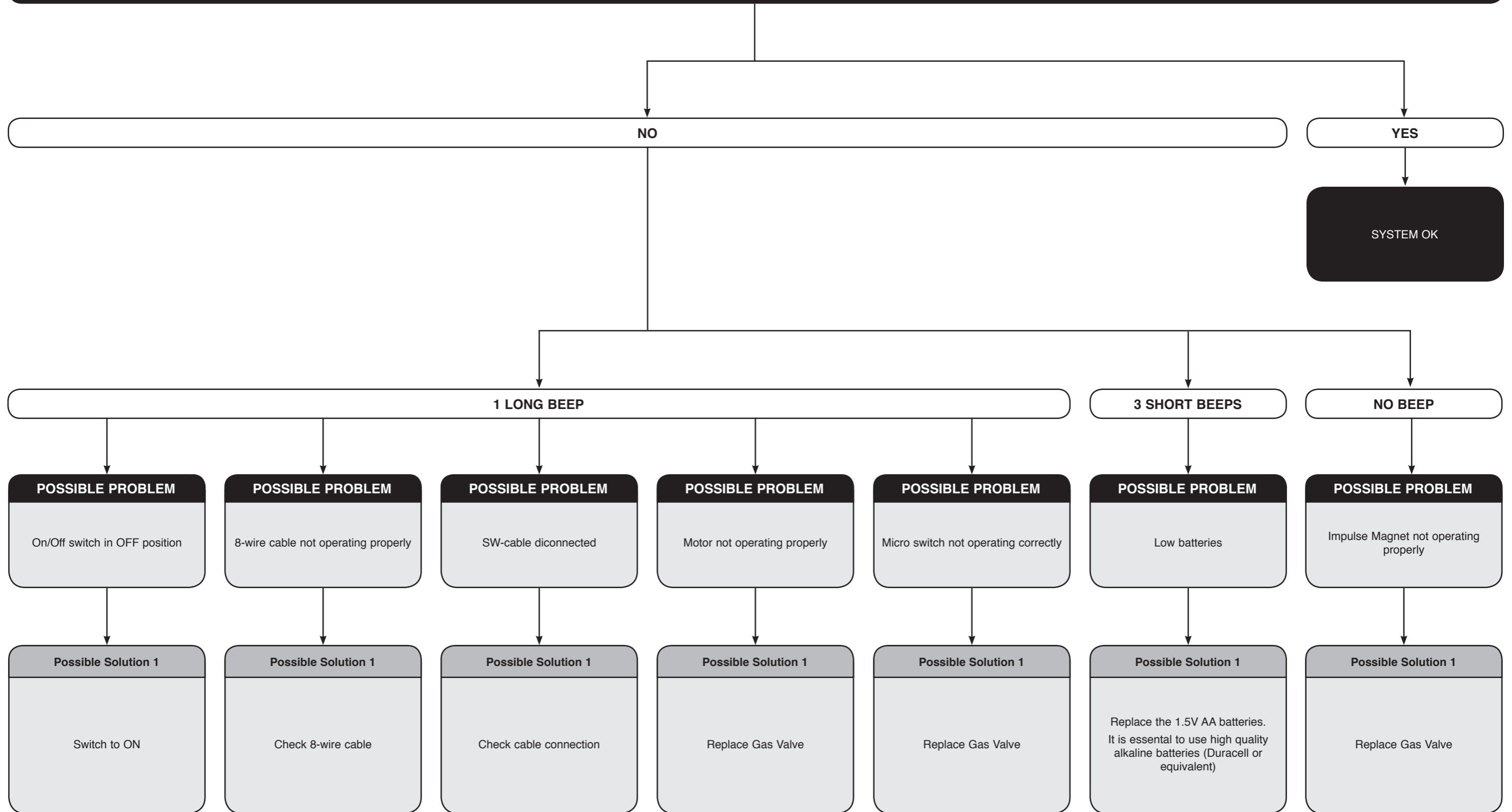


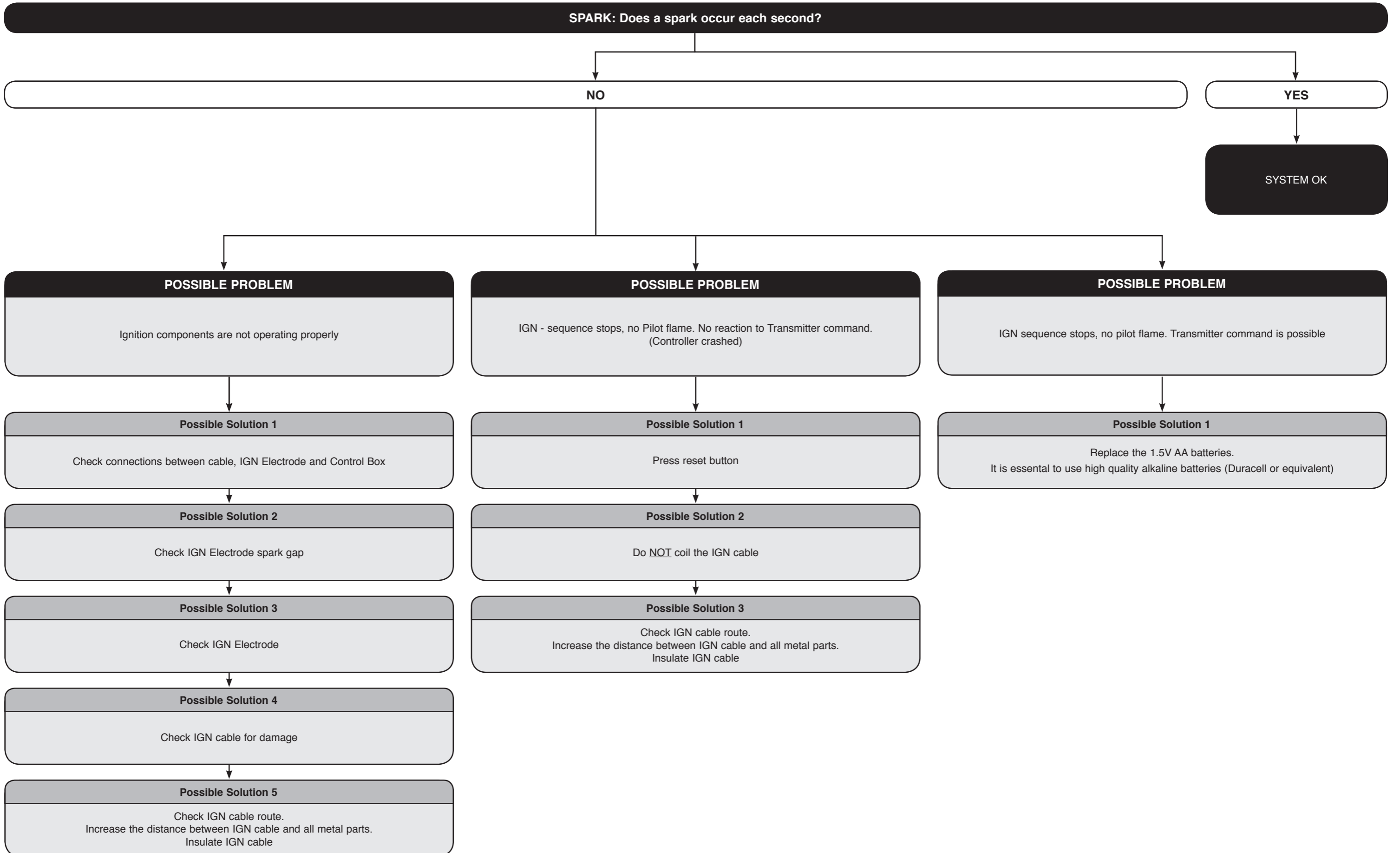
DOES THE APPLIANCE LIGHT FROM THE HANDSET? Press both buttons to start ignition (IGN) sequence. A beep will occur each second



Troubleshooting 3: MERTIK

Is the Magnet Unit energised? Is there an audible thud to detect functionality?





Troubleshooting 5: MERTIK

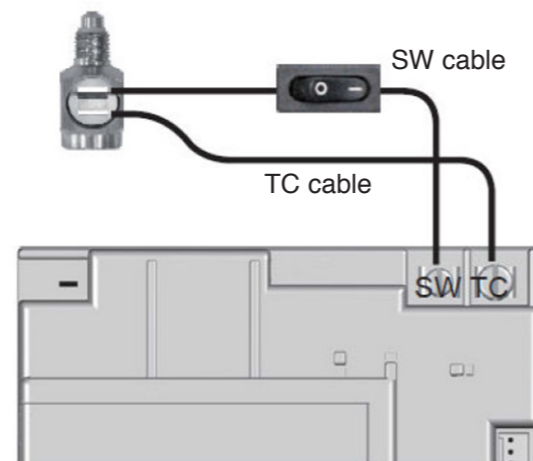
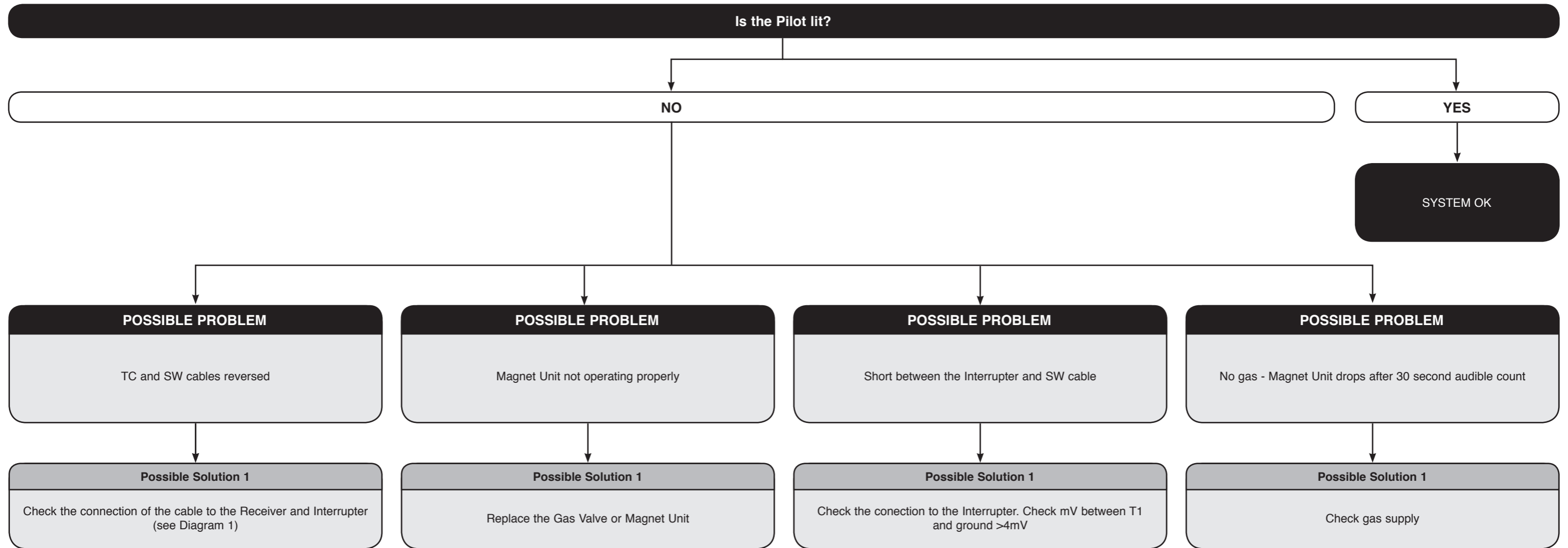
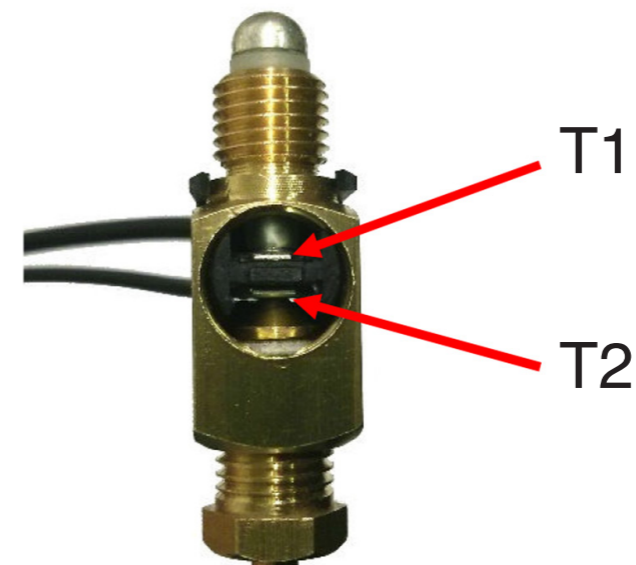
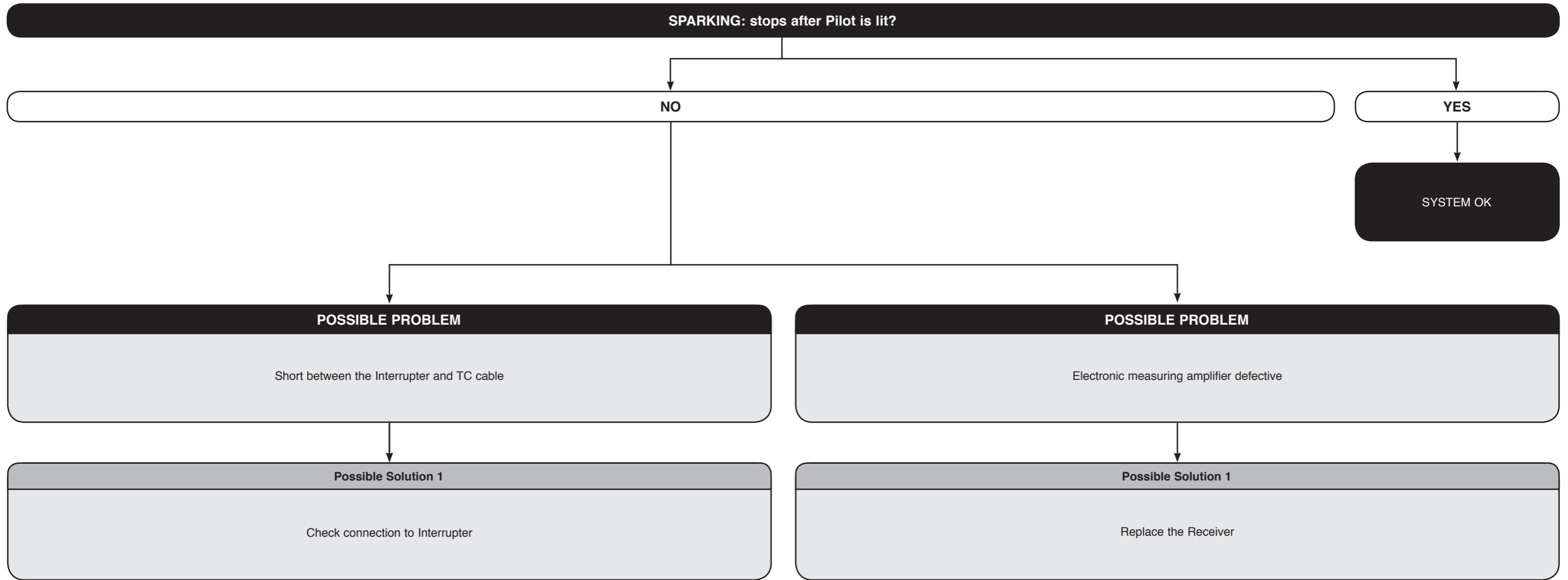


Diagram 1





MOTOR: Motor turns to main gas and Pilot stays lit?

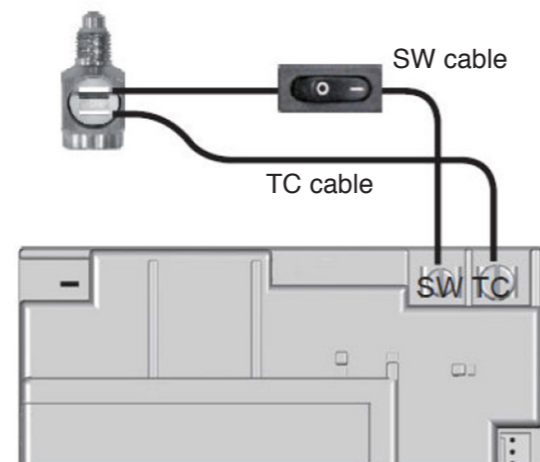
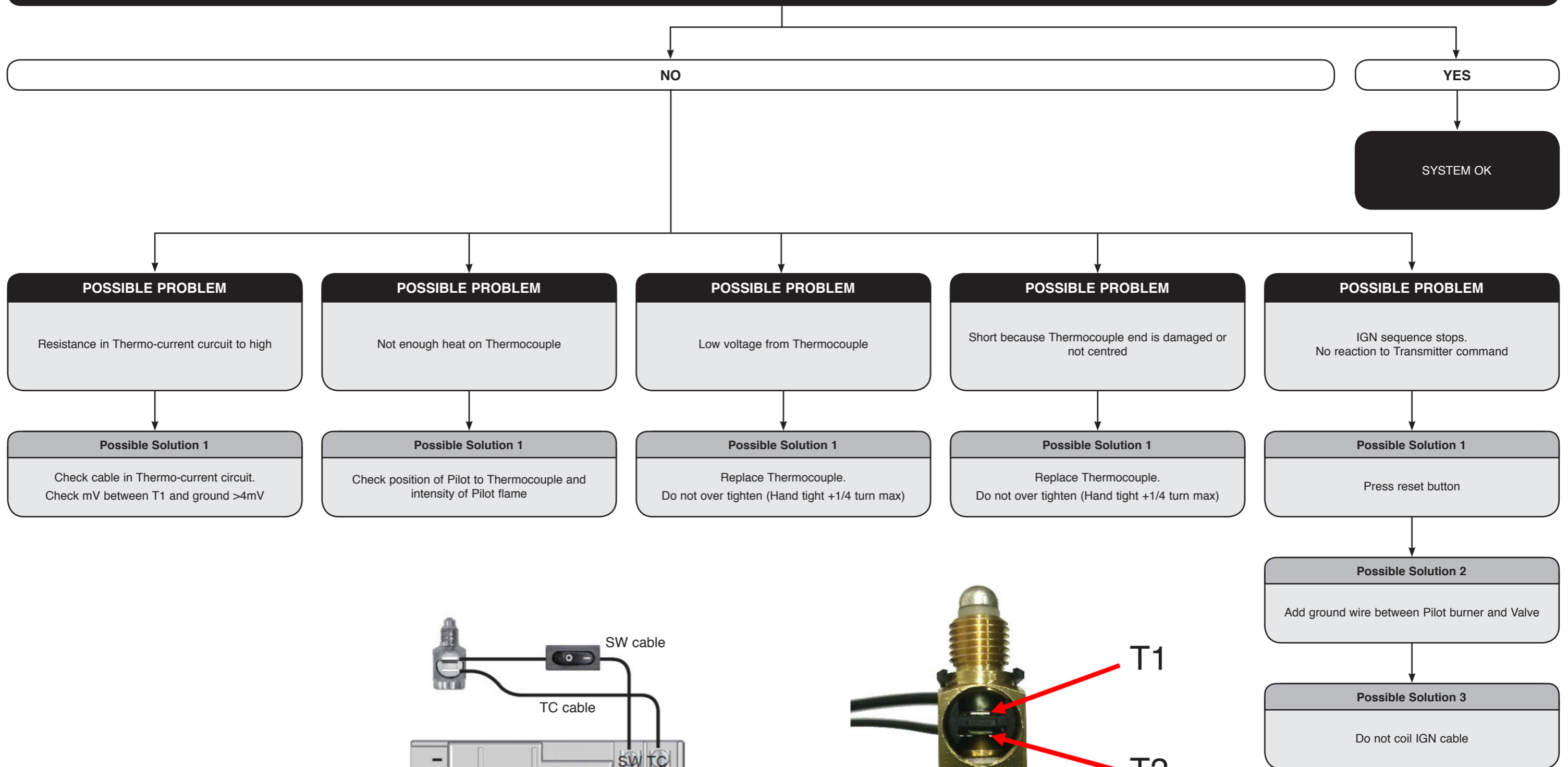
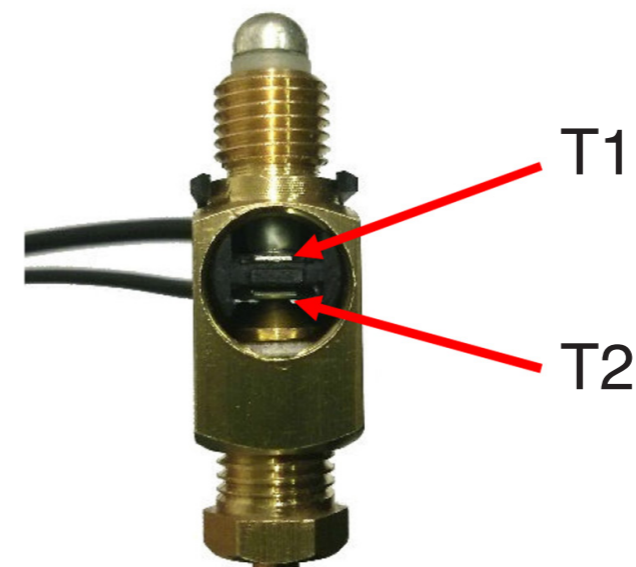
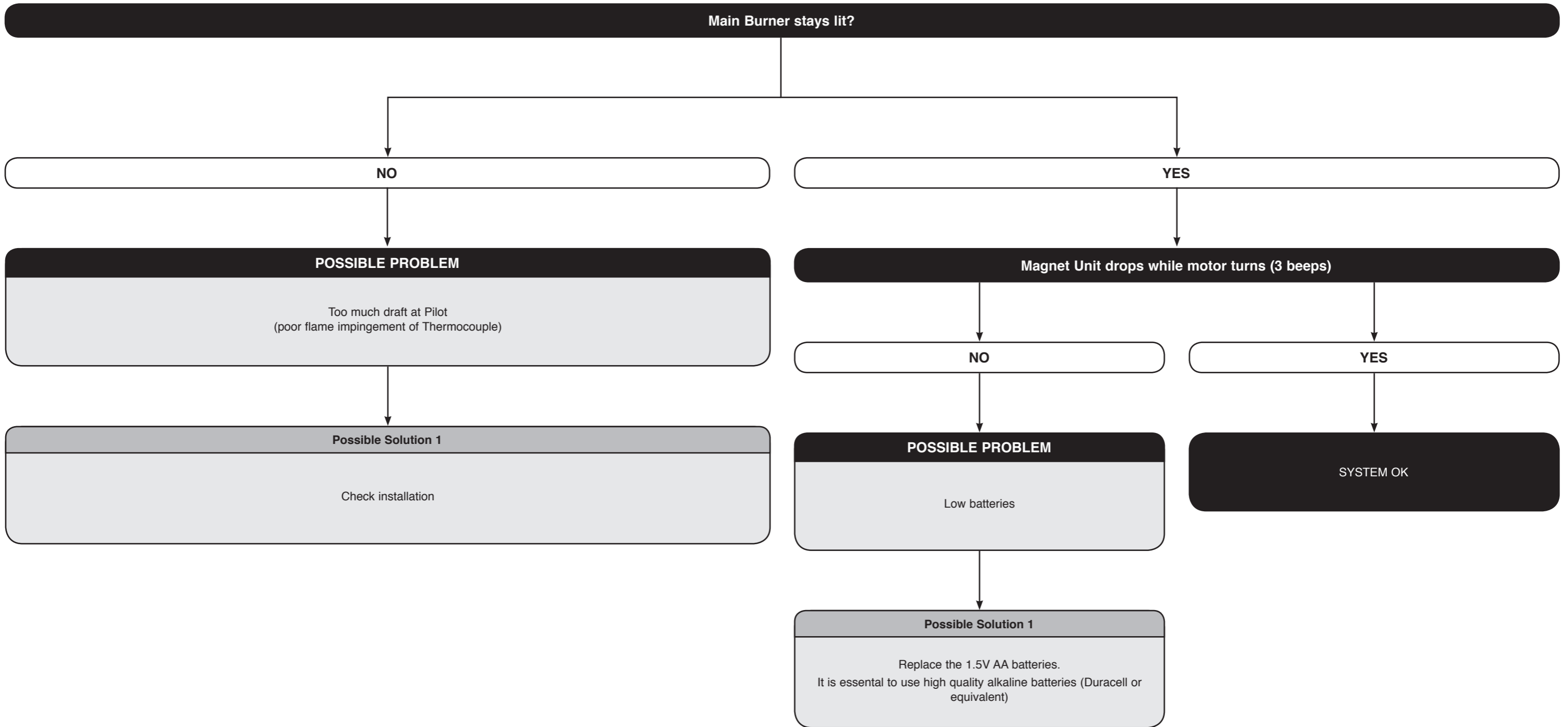
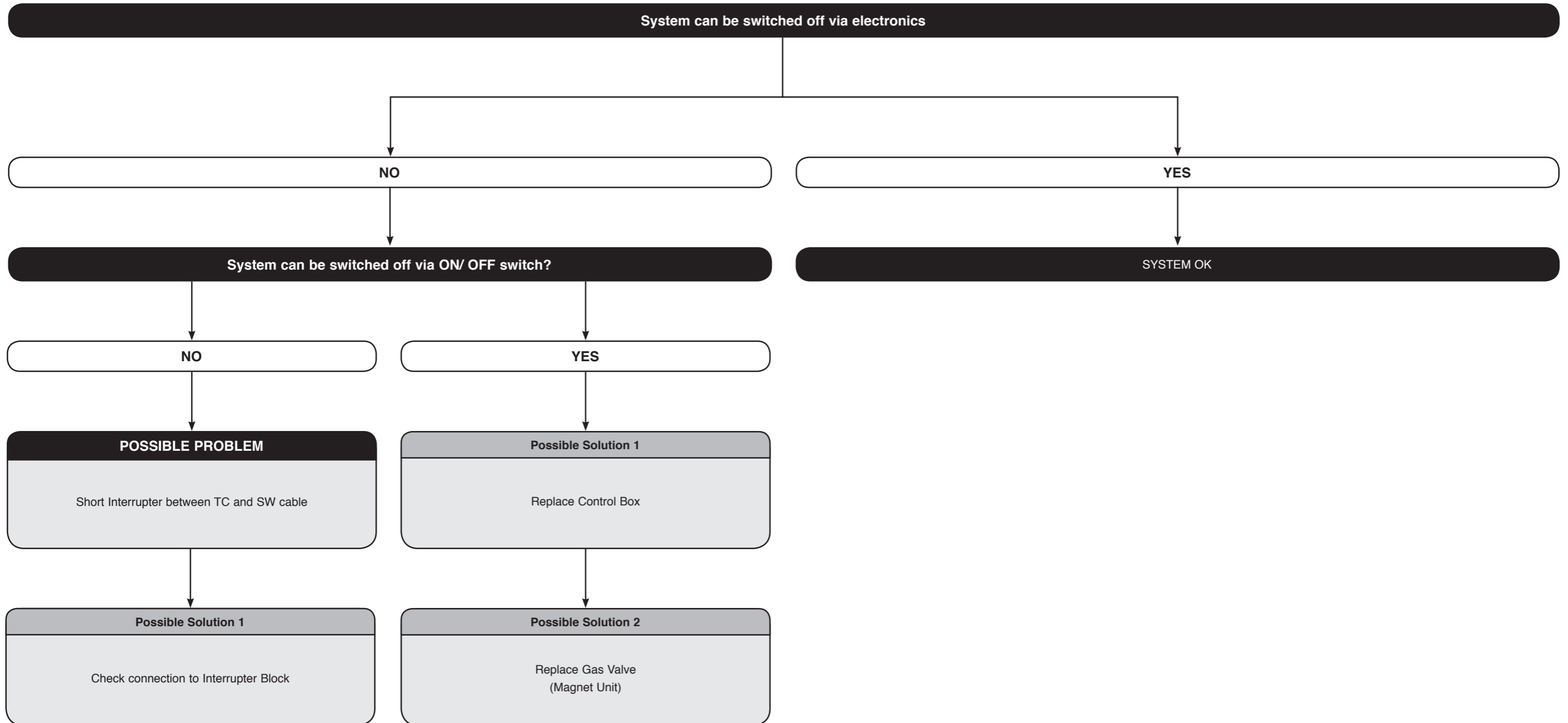


Diagram 1









Gazco Limited
Osprey Road, Sowton Industrial Estate,
Exeter, Devon, England EX2 7JG
Email: info@gazco.com

A member of the Stovax Group

www.gazco.com

© All material copyright Gazco Ltd 2014 E & O E

