

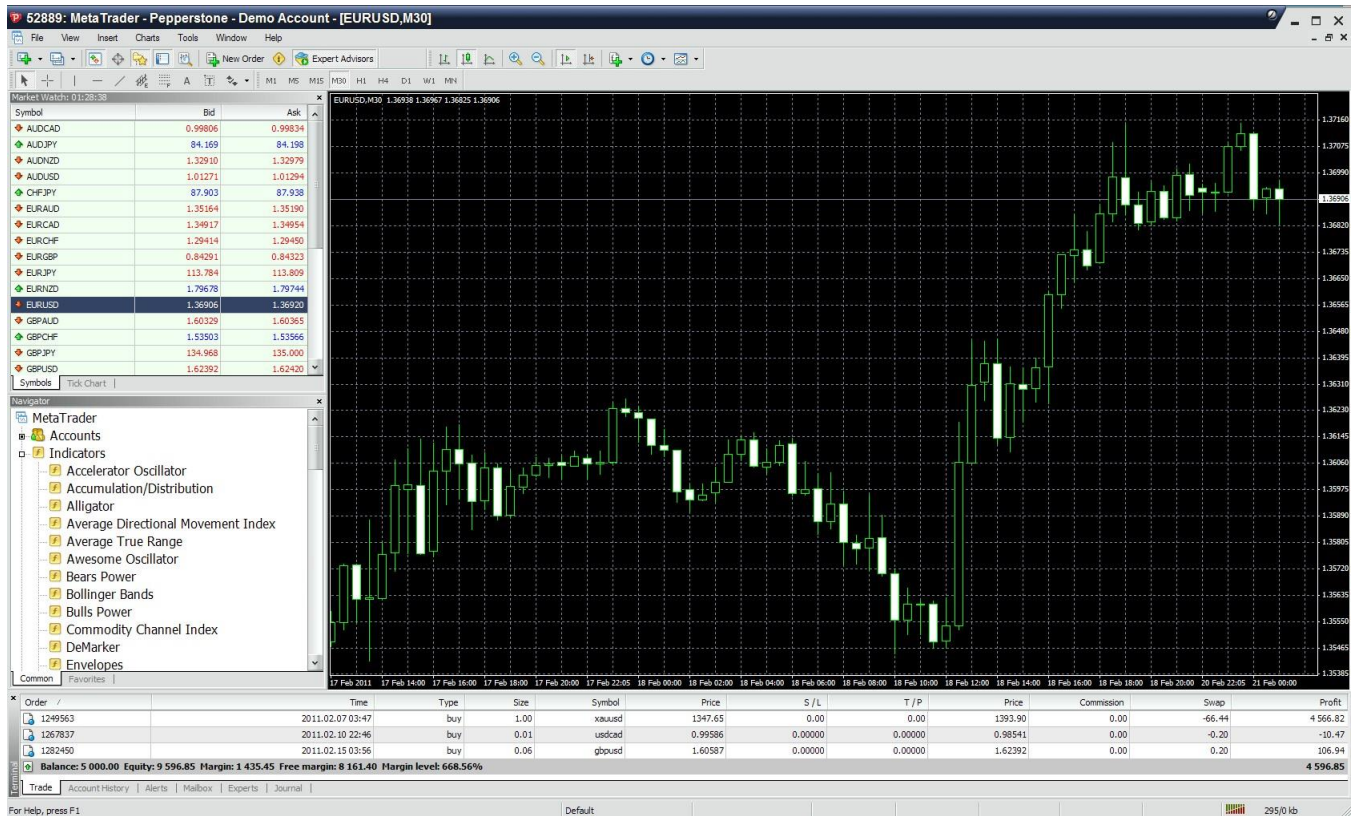
MetaTrader 4 USER GUIDE

MT4 Chart Software Manual

Table of Contents	
Introduction	1
MT4 Download link	2
Installing of MT4	3
Alice Blue Indicator	4
Alice Blue Scanner	5
Alice Blue One Click Trading	6
Alice Blue AP Tool	7
General instruction For Nest & MT4	8

1. Introduction:

Here is a picture of what the MT4 main screen looks like



Main menu (access to the program menu and settings);

Toolbars (quick access to the program features and settings);

"Market Watch" window (real-time quotes for the specified instruments);

"Navigator" window (quick access to all your accounts, indicators, expert advisors); **"Chart" window**;

"Terminal" window (quick access to the trading and account history, list of open positions and placed orders, client terminal log-file and internal mailbox).

2. MT4 DOWNLOAD LINK

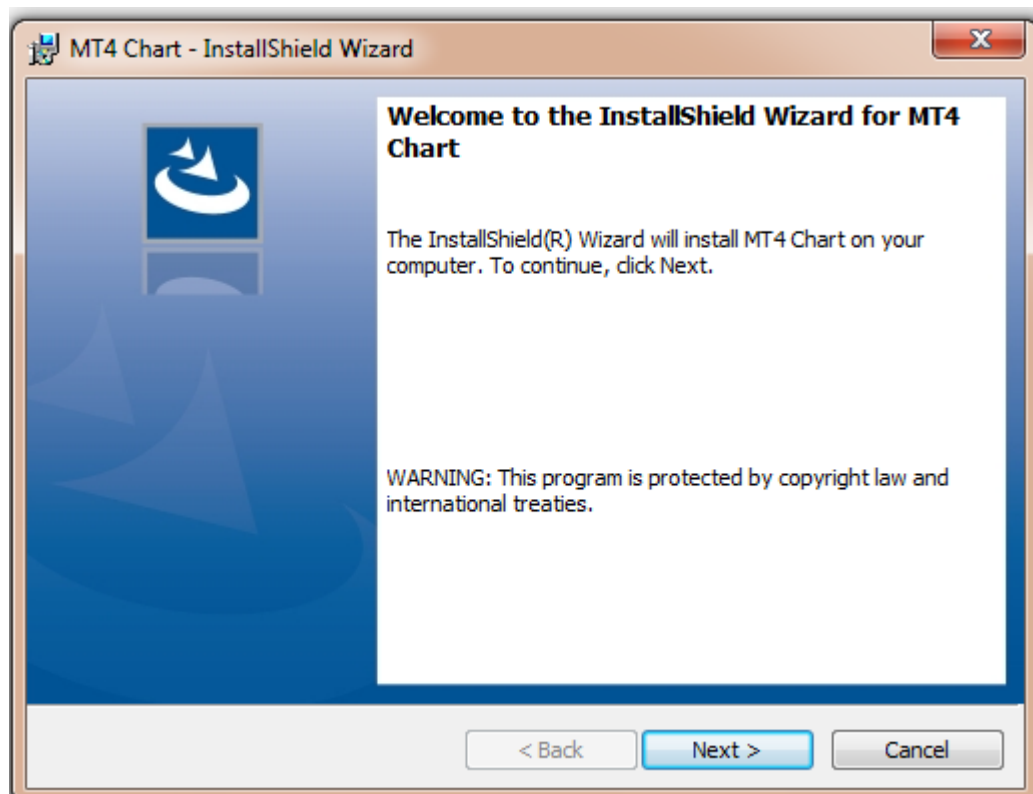
To download MetaTrader4 platform from Website

<http://www.aliceblueonline.com/assets/images/uploads/downloads/downloads/tradize4setup.exe>

3. MT4 INSTALLATION

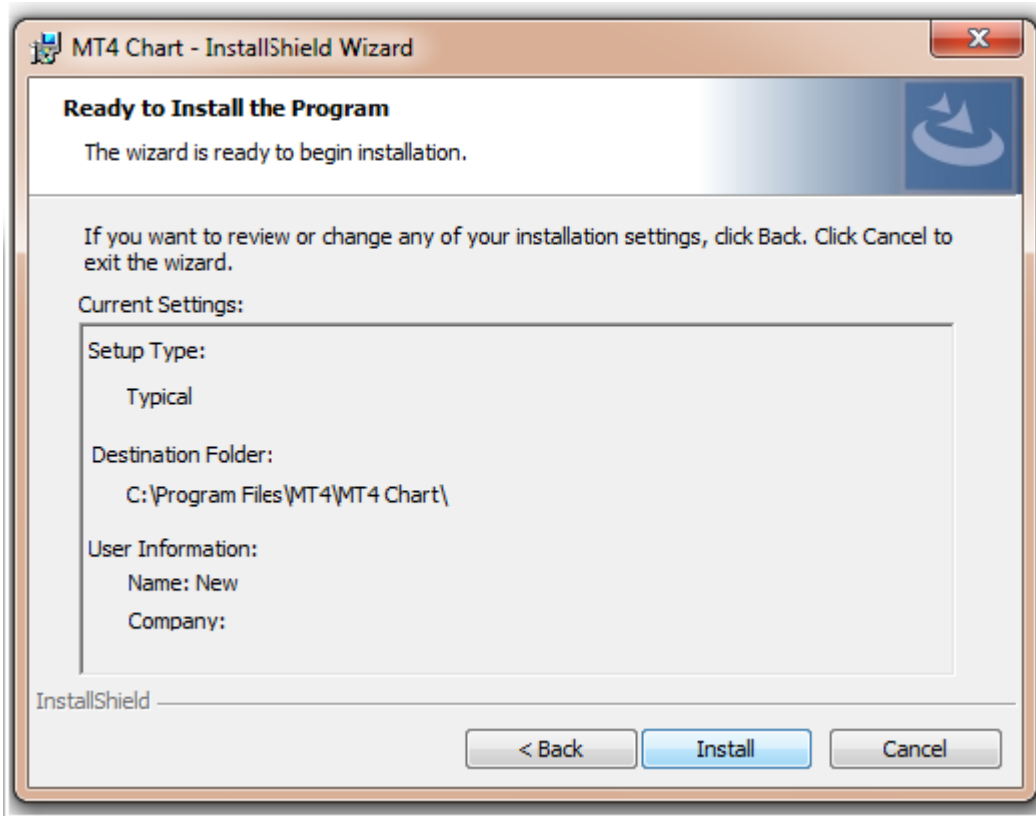
After downloading the file double click on it and Run the MT4Chart setup.

a) Launch the MT4Chart exe file the same way you will get.



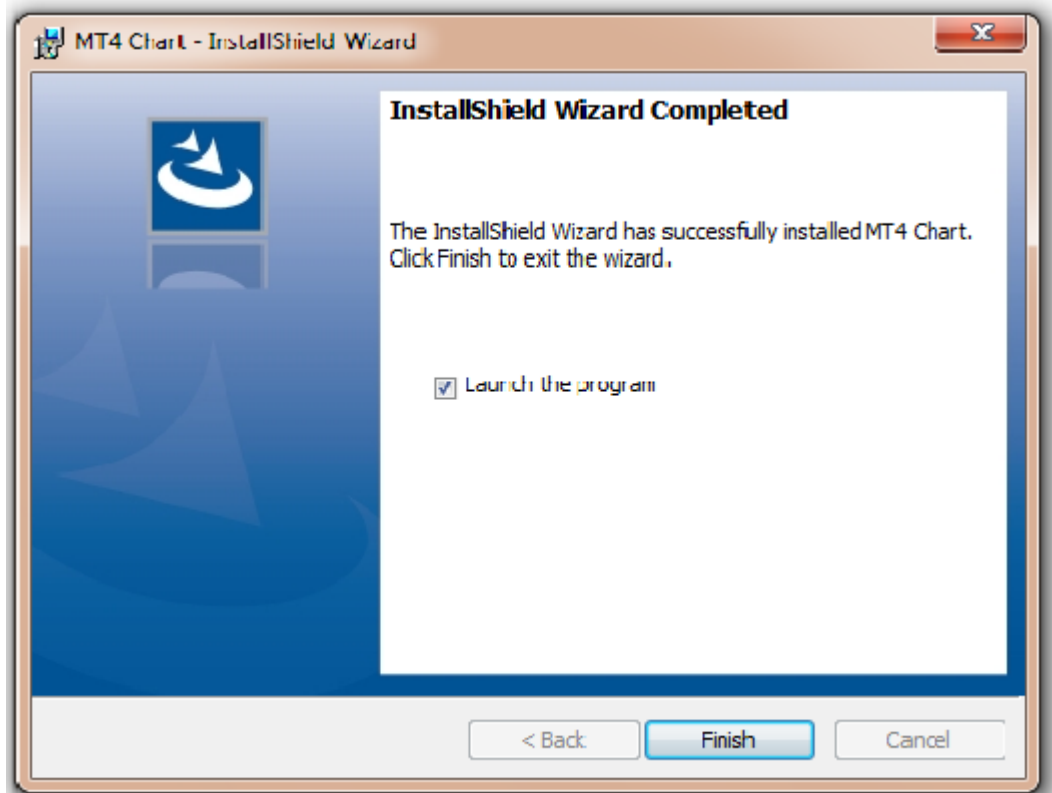
Click on the Next Button

b) After Clicking the Next Button You will get the Screen like this



Then Click on the Install Button

c) After Clicking the Install Button You will get the Screen like this



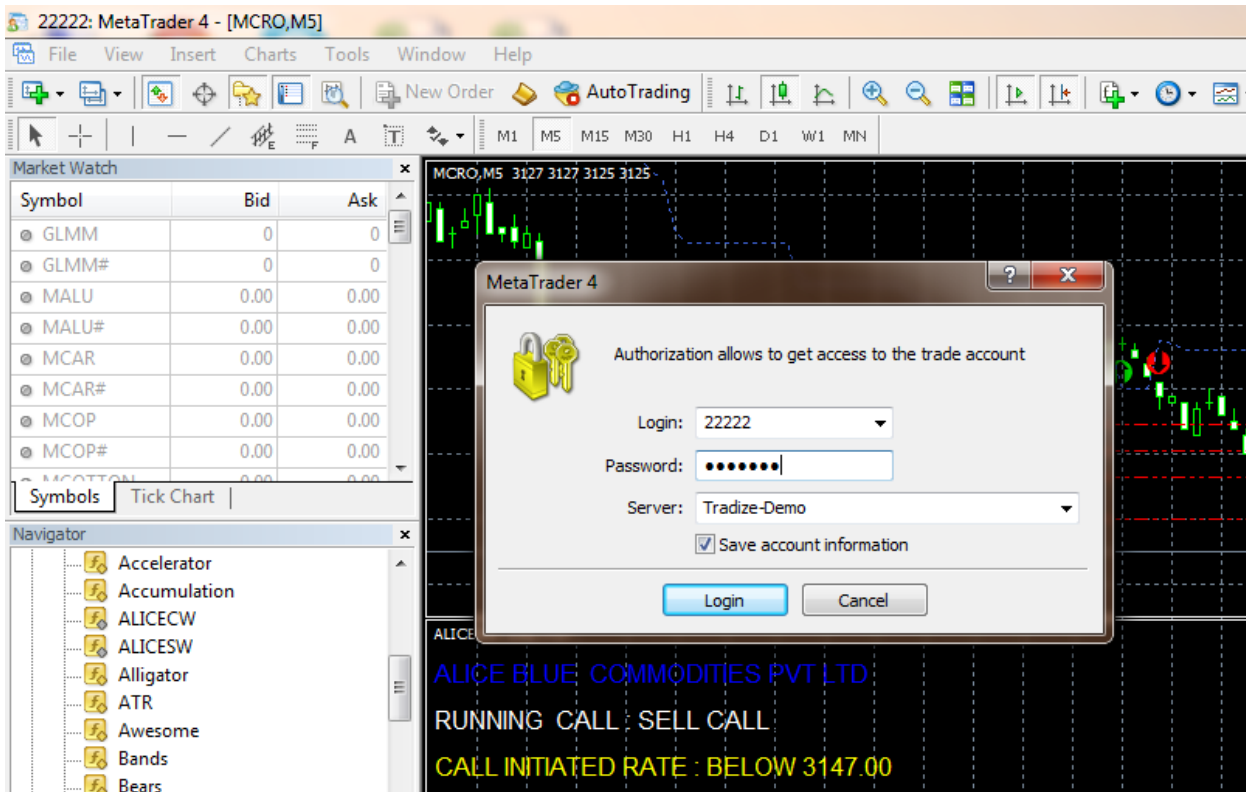
Then Click on the Finish Button

d) After Clicking the Finish Button You will get an ICON on Desktop like this



Double Click On it

e) You will get an Screen like this



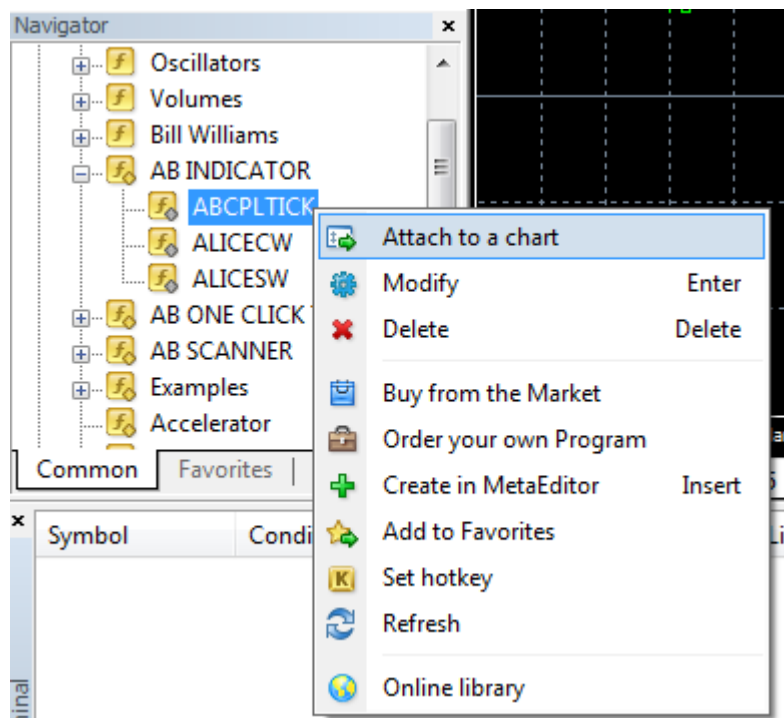
After coming this Screen Put your Login No & Password for **LOGIN** it.....

Then your MT4 terminal will get in to LOGIN...

4. ALICE BLUE INDICATOR

INSTALLTION PROCEDURE

- a) To use Alice Blue Indicator → Go to Indicators Folder → At there will be an Folder Name- **AB INDICATOR**.
- b) In that there will 3 Indicators named → **ABCPITICK / ALICECW / ALICESW**
- c) Right Click on the Indicator name and click Attach to a Chart on the 3 indicators one by one.



d) After attaching Indicator you will get an Page like this



5. ALICE BLUE SCANNER

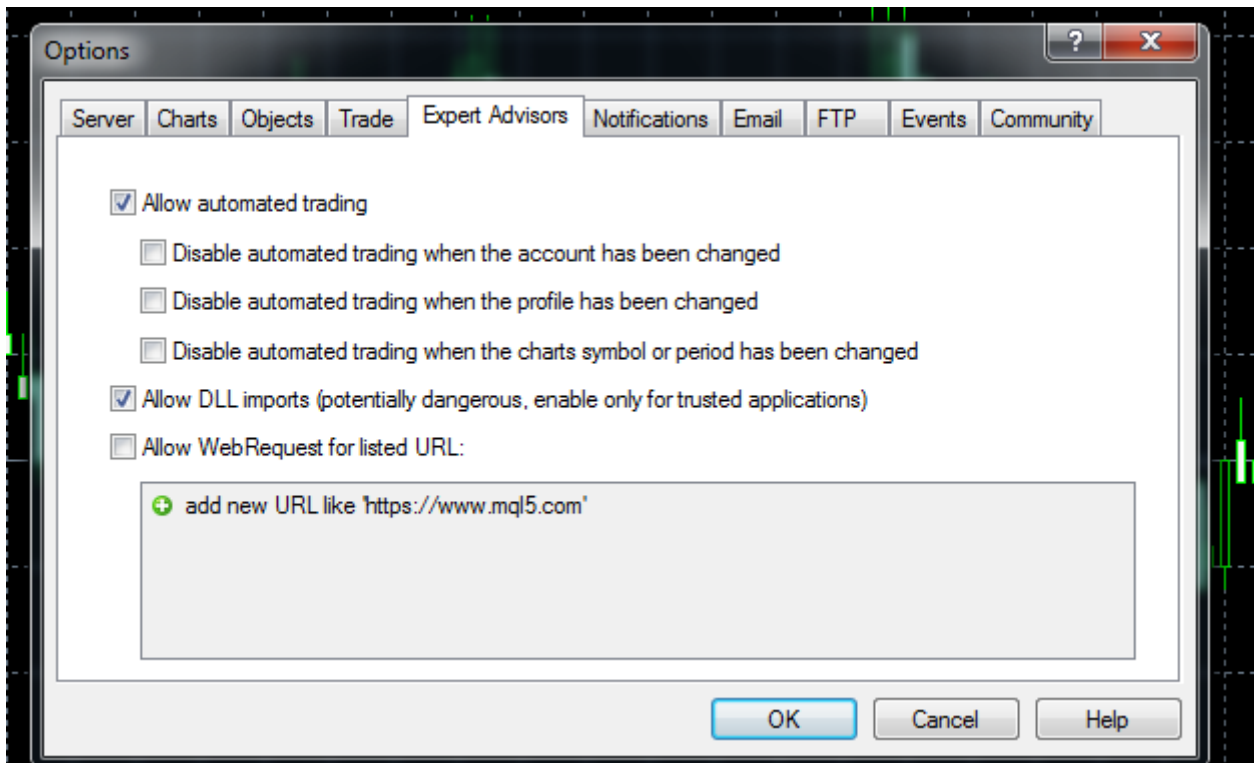
PRODUCT DESCRIPTION

This is one of the customized indicator tools for Meta Trader Charting Platform. It's showing the Super Trend Indicator trending levels with stop loss, 3 Takeprofit levels value of the available scripts in market watch window in MT4 chart. While clicking the Symbol Name Button it will open the respective script chart window with Super Trend Indicator at current Time Frame.

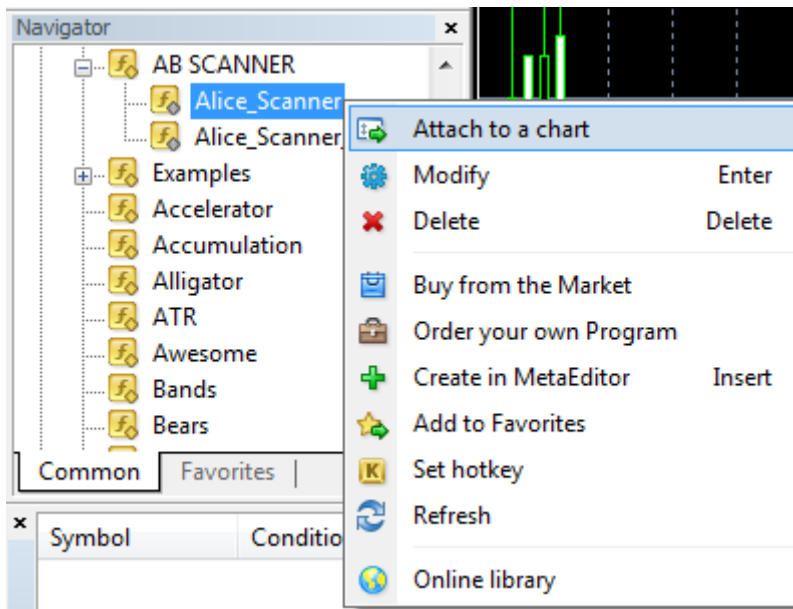
In this main screen, showing symbol name with Stop Loss value, Entry Price, Last Traded Price and 3 Level Take Profit.

INSTALLTION PROCEDURE

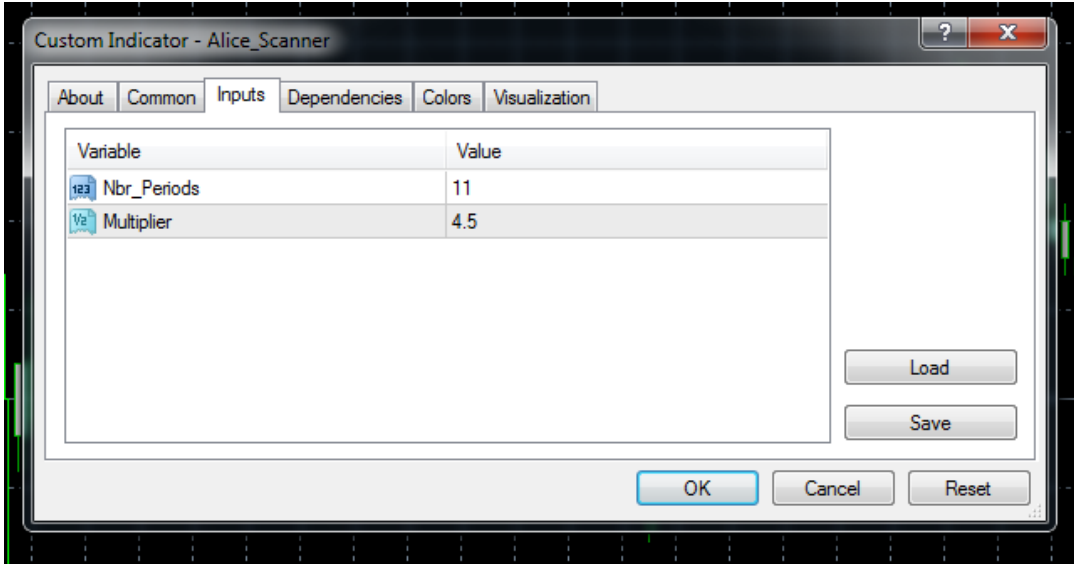
- a) To use Alice Blue Scanner → Go to Indicators Folder → At there will be an Folder Name- **AB SCANNER**.
- b) In that there will 2 Indicators named → **ALICE_SCANNER / ALICESCANNER_ST**
- c) Go to Tools menu → In that Option Click Expert Advisor and Enable Allow Automated trading & Allow DLL Imports and Click OK Button



d) In that Right Click on the Indicator name **ALICE_SCANNER** and click Attach to a Chart



e) After attaching to chart you change parameter from Input according to your strategy and then Click OK



f) After clicking Ok you will get an Screen like this



- g) While clicking the Symbol Name Button it will open the respective script chart window with Super Trend Indicator at current Time Frame.

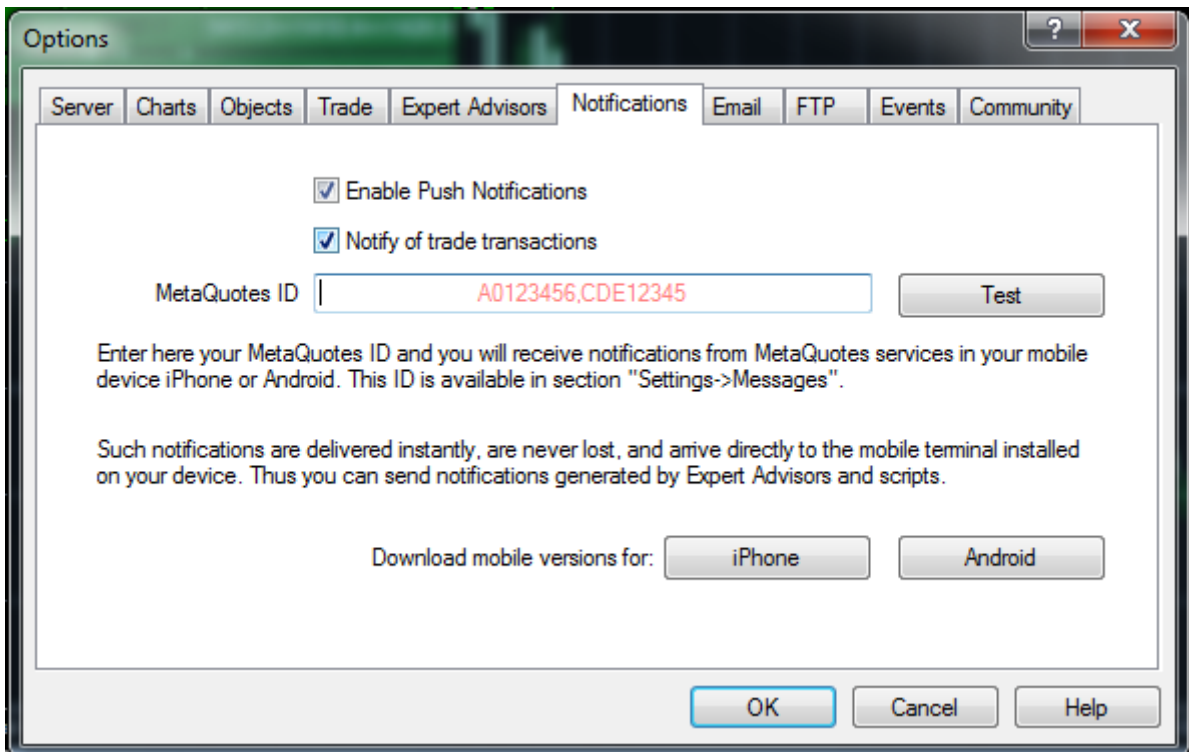


- h) You can Set Mobile Notification for each signal. Whenever the Entry comes you will get an message to your mobile. To do this Go to Options From Tools Menu

Step 1: Find your “MetaQuotes ID”

The MetaQuotes ID is a unique code assigned to your device. On your mobile device, download and open [MetaTrader 4 mobile](#). Go to the settings menu. Scroll down to the “Messages” header. You will see “MetaQuotes ID” and an 8-character code.

Step 2 : Put that “MetaQuotes ID” in BOX



Step 3: Test your connection

After you enter your MetaQuotes ID, click “Test.” This will generate a test message to your mobile device. It will prompt you to check your journal. You can look in the “Journal” tab of the terminal window to confirm the notification was sent. If set up properly, you will receive a notification in your status bar and in the “Messages” area of MT4 Mobile.

6. ALICE BLUE ONE CLICK TRADE

PRODUCT DESCRIPTION

This is one of the customized indicator tools for Meta Trader Charting Platform. Place Instant order in One click to NEST terminal.

WHY USE ONE CLICK TRADING?

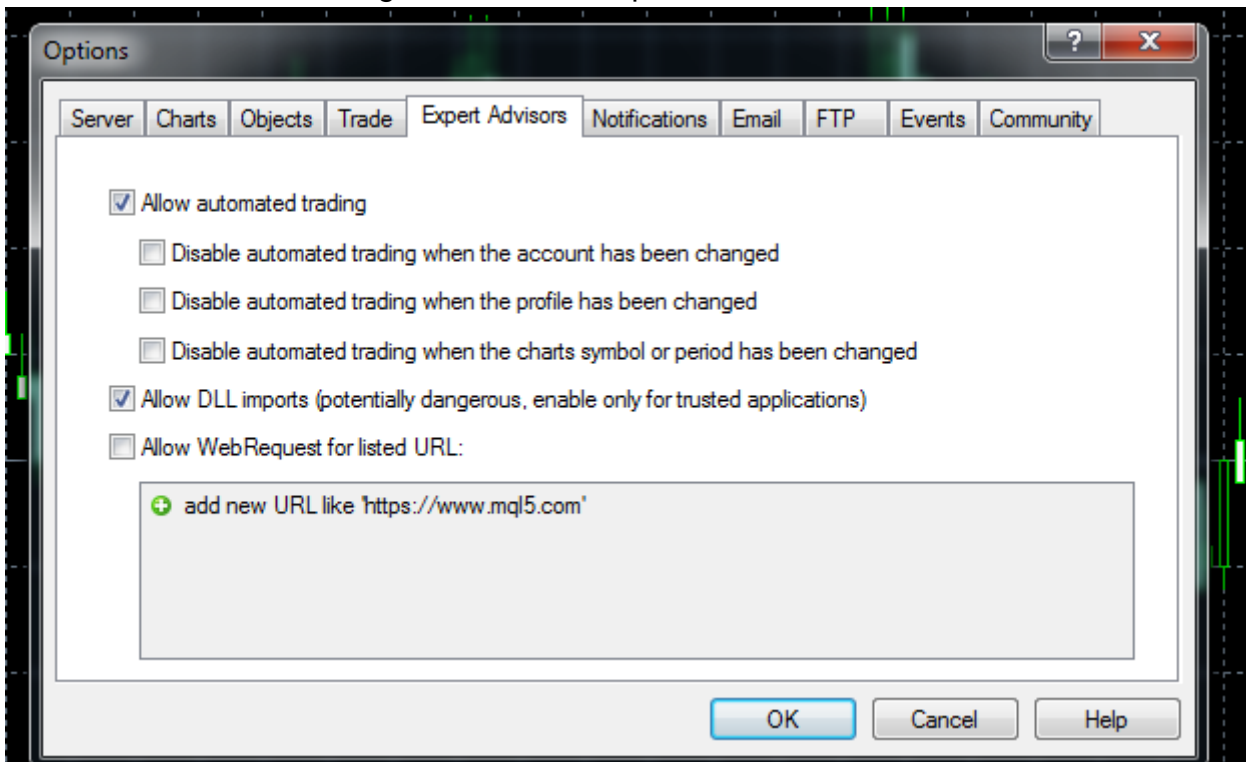
One Click trading has a lot of benefits that help you to take advantage in trading. While clicking the Buy or Sell Button it will place the order in Client Nest Terminal Instantly.

- Save Your Time
- Instant & Quick Execution
- Easy to Place order in High Volatile Market.
- Buy SL/Sell SL Order Execution with Multiple lot
- Easy to close all Trades in One click
- Easy for Newbie's Traders

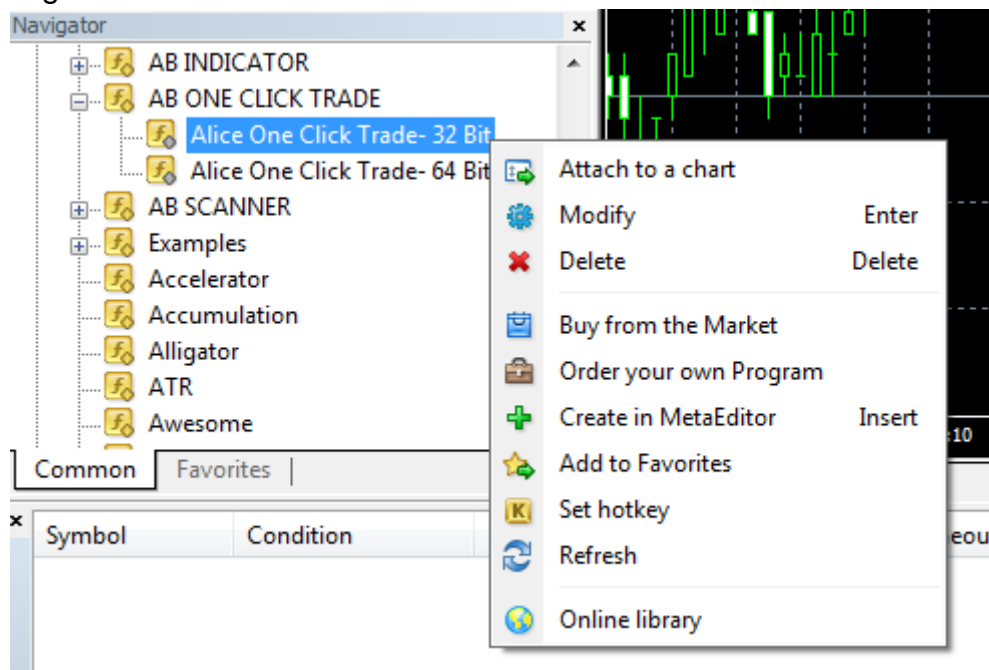
INSTALLTION PROCEDURE :

- To use Alice Blue One Click Trade → Go to Indicators Folder → There will be an Folder Name- **AB ONE CLICK TRADE**.
- In that there will 2 Indicators named → **Alice One Click Trade- 32 Bit / Alice One Click Trade- 64**

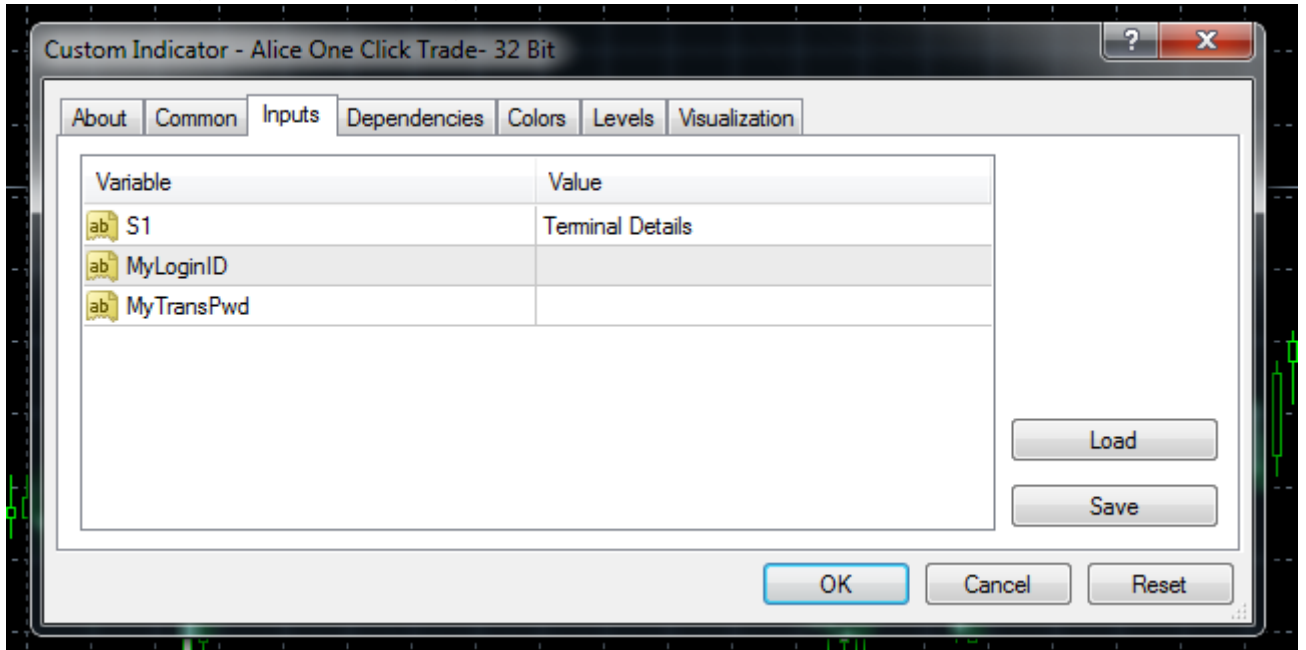
- c) Go to Tools menu → In that Option Click Expert Advisor and Enable Allow Automated trading & Allow DLL Imports and Click OK Button



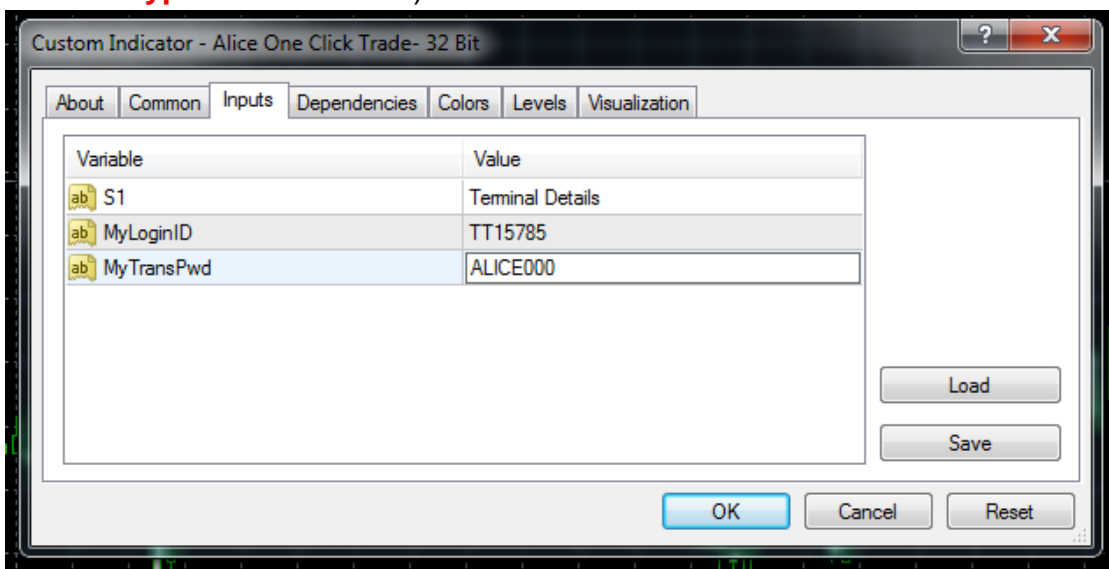
- d) Check your system is made up of 32 or 64 Bit. If your System is 32 Bit then Right Click on **Alice One Click Trade- 32 Bit** and click Attach to a Chart



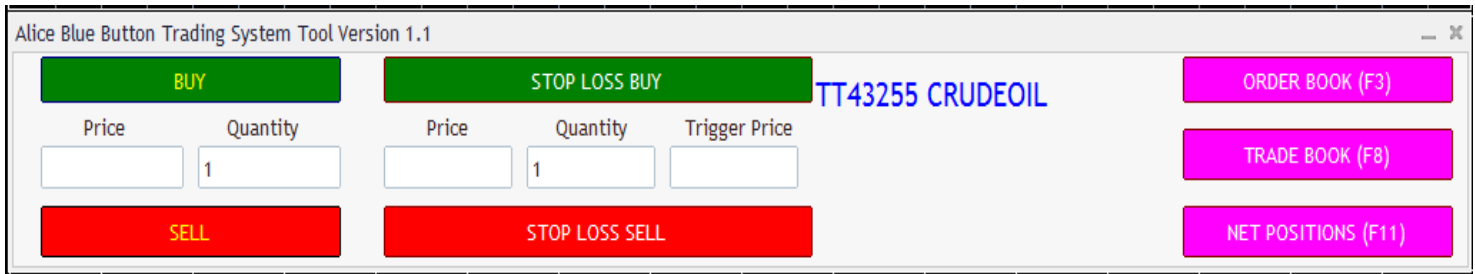
e) After attaching to chart you will get an Input window like this.



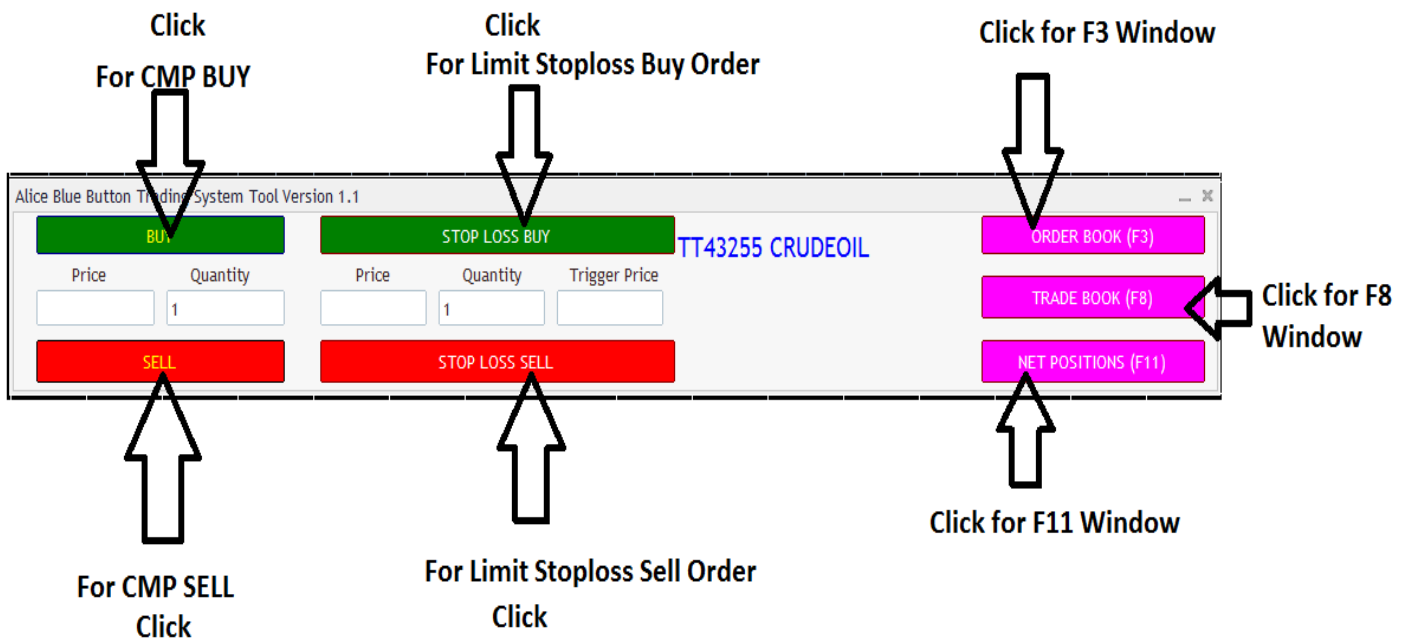
f) In MyLoginID Type your Nest ID & In MyTransPwd Type your Nest Transaction Password. (**If you Don't have Transcation Password then type as- ALICE000**)



g) After giving Input Details click OK Button. Then you will get an Window like this



g) For Instant Buy or Sell entry you can directly click the BUY or SELL button. By Clicking the Button it will place order in your NEST acc.



7. ALICE BLUE AP TOOL

PRODUCT DESCRIPTION

This is one of the customized indicator tools for Meta Trader Charting Platform. Place Instant order for Multiple Clients in One click to NEST terminal.

WHY USE AP ONE CLICK TRADING?

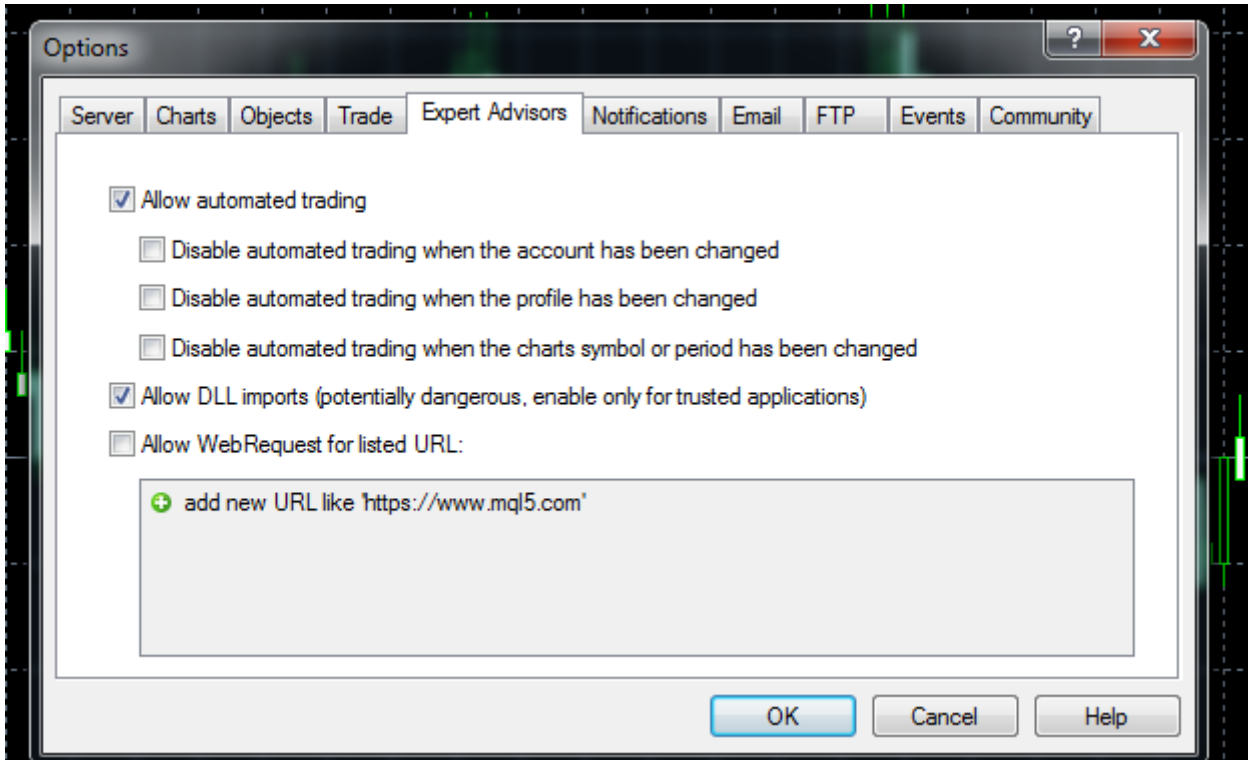
AP One Click trading has a lot of benefits that help you to take advantage in trading. While clicking the Buy or Sell Button it will place orders to MULTIPLE Clients Instantly .

- Save Your Time
- Instant & Quick Execution to all clients
- Easy to Place order in High Volatile Market.
- Buy SL/Sell SL Order Execution with Multiple lot
- Easy to close all Trades in One click
- Easy for Newbie's Traders

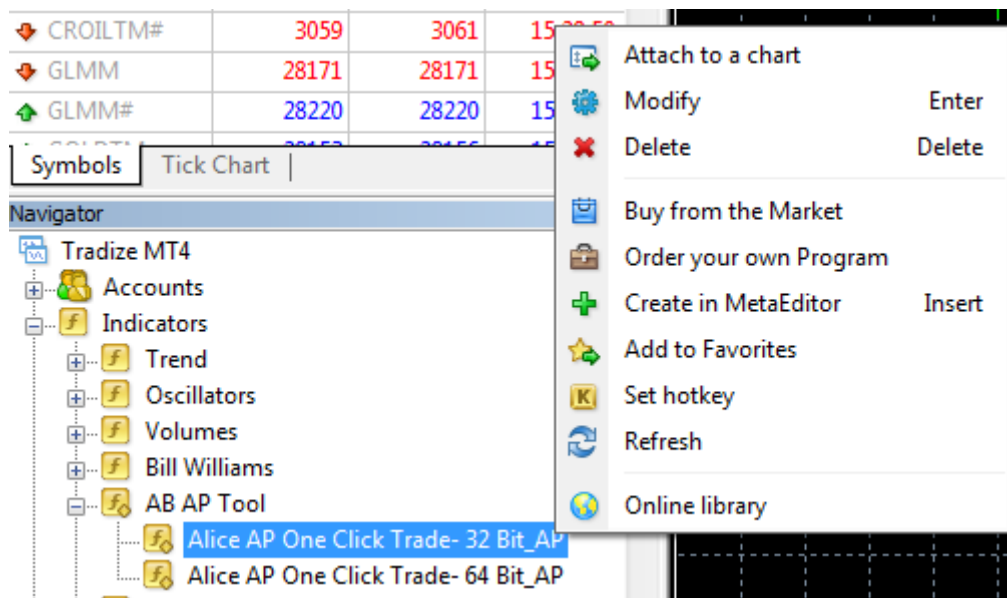
INSTALLTION PROCEDURE :

- a) To use Alice Blue One Click Trade → Go to Indicators Folder → There will be an Folder Name- **AB AP TOOL**.
- b) In that there will 2 Indicators named → **Alice AP One Click Trade- 32 Bit_AP / Alice AP One Click Trade- 64 Bit_AP**
- c) Go to Tools menu → In that Option Click Expert Advisor and Enable Allow

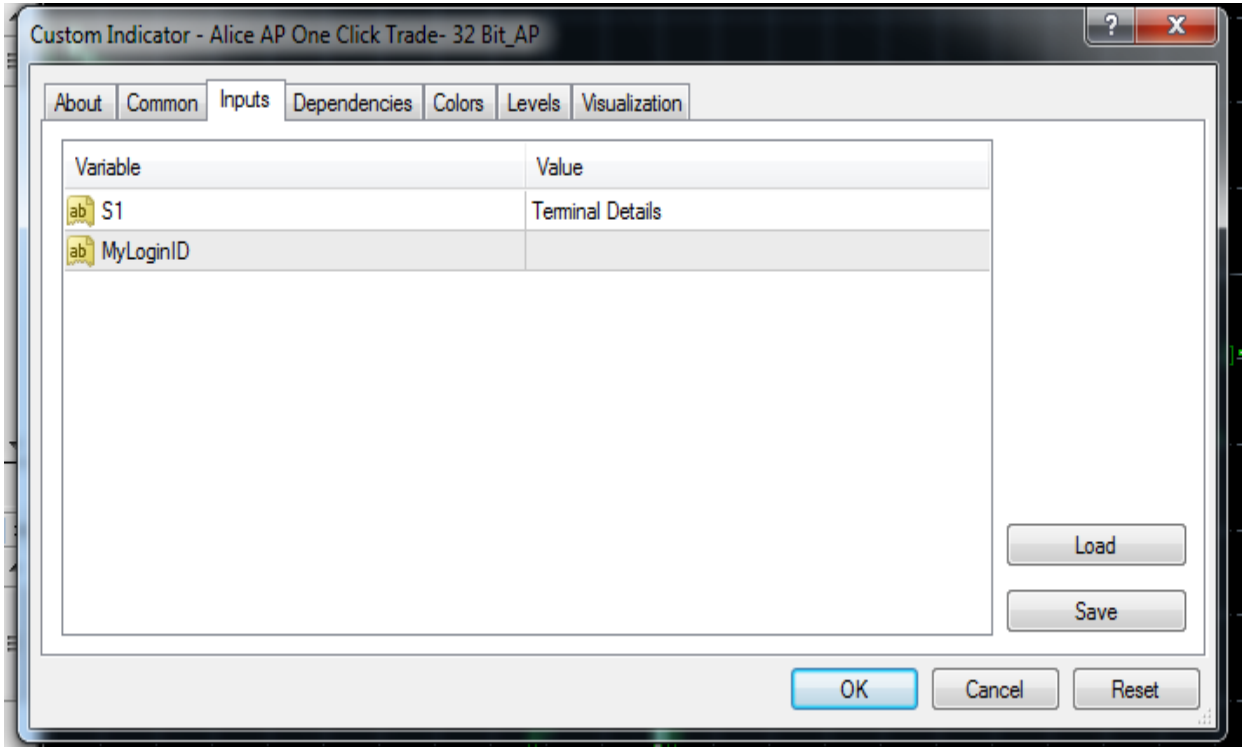
Automated trading & Allow DLL Imports and Click OK Button



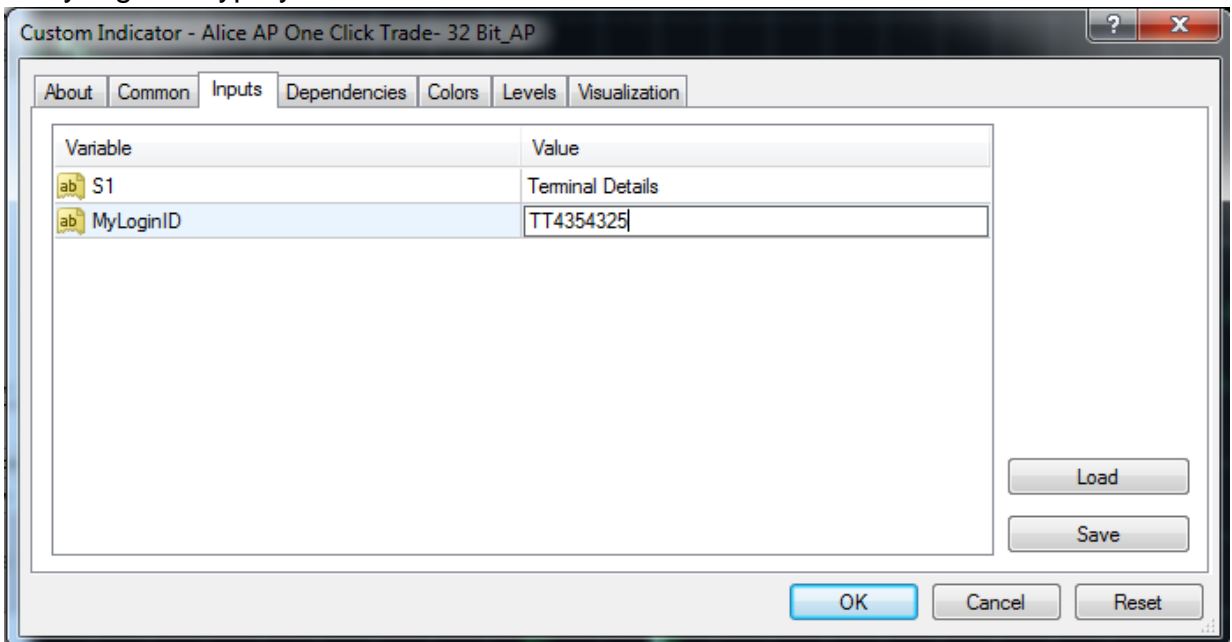
- d) Check your system is made up of 32 or 64 Bit. If your System is 32 Bit then Right Click on **Alice AP One Click Trade- 32 Bit_AP** and click Attach to a Chart



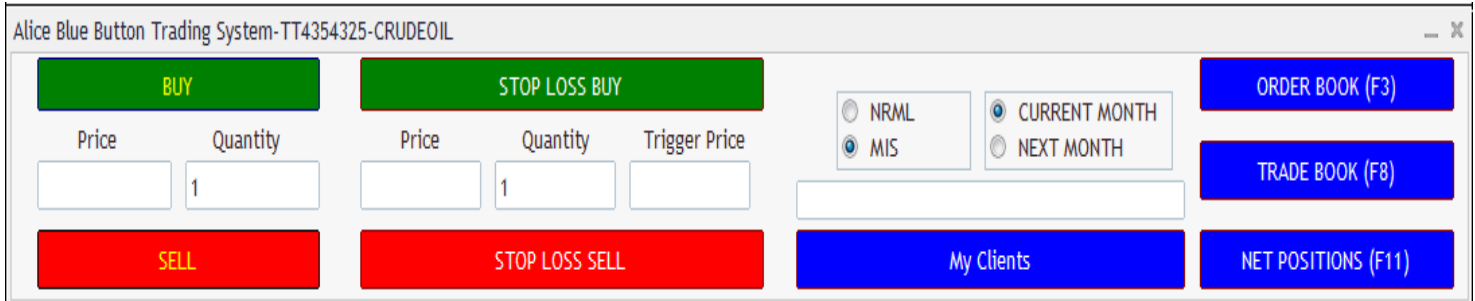
e) After attaching to chart you will get an Input window like this.



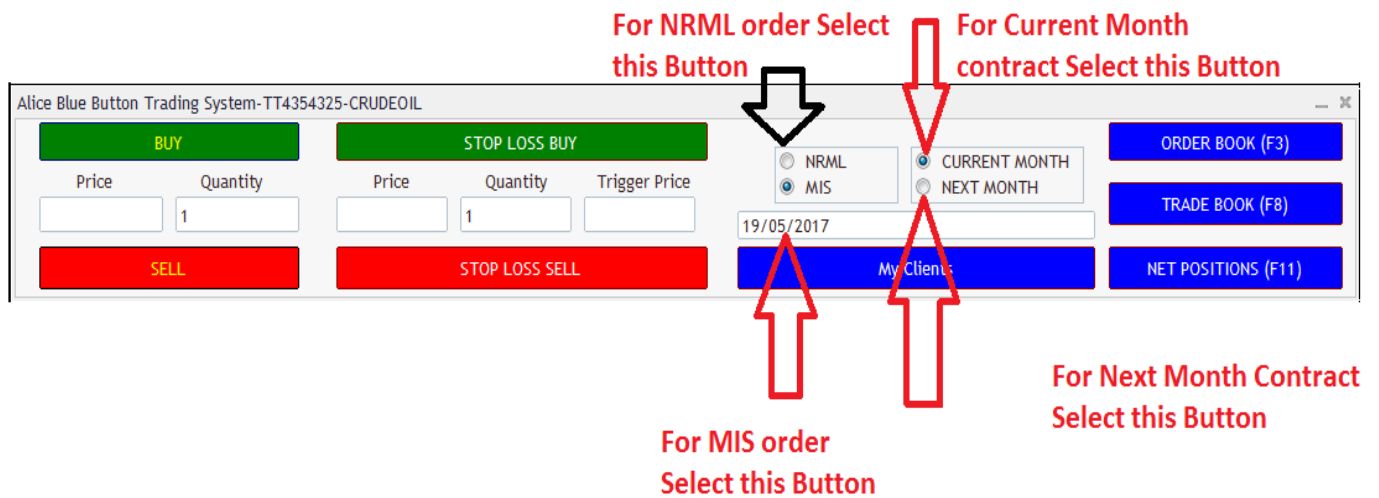
f) In MyLoginID Type your Nest ID



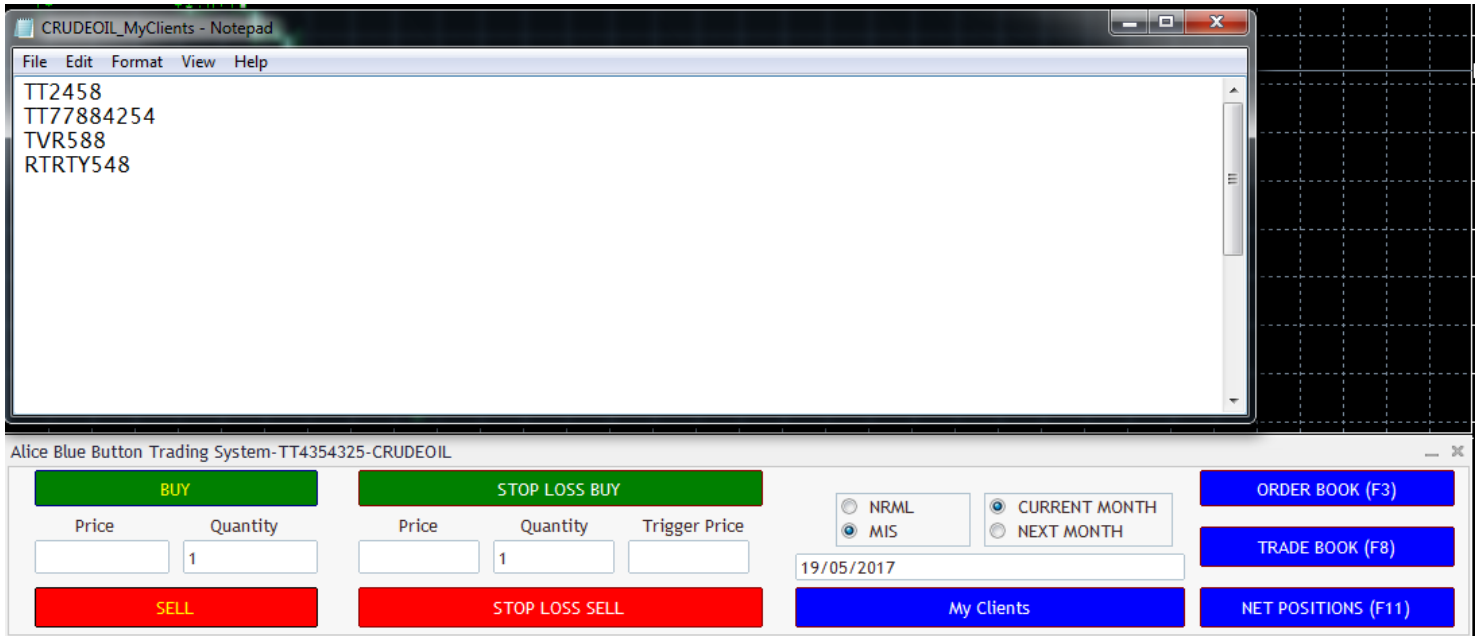
g) After giving Input Details click OK Button. Then you will get an Window like this



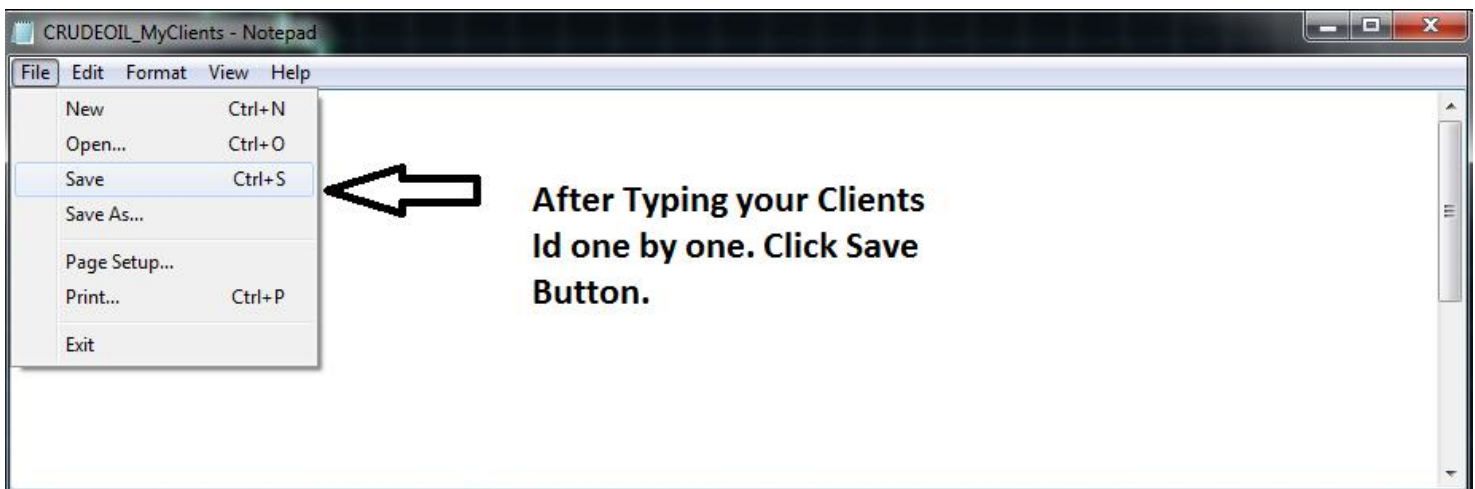
h) By this tool we can Place order for NRML & MIS mode also. And We can Place for Current & Nest Month Contract also



- i) By this tool we can Place order to Multiple Clients by Saving their Nest Login Id in MyClients Notepad.
For doing this you need to Click MyClients Button. After Clicking you will get an Notepad File. In that Add your Clients Nest Id details.



- j) After finishing it Save the file and close the notepad. By doing this you can place instant order to all clients in Same pair.
Like this you can save Multiple Pairs list for Multiple Clients.



k) For Instant Buy or Sell entry you can directly click the BUY or SELL button. By Clicking the Button it will place order in your NEST acc.

The screenshot shows the 'Alice Blue Button Trading System-TT4354325-CRUDEOIL' window. It features four main buttons: a green 'BUY' button, a green 'STOP LOSS BUY' button, a red 'SELL' button, and a red 'STOP LOSS SELL' button. Each button has a corresponding form below it with 'Price' and 'Quantity' fields. The 'BUY' and 'STOP LOSS BUY' forms have a 'Quantity' field with the value '1'. The 'STOP LOSS BUY' form also has a 'Trigger Price' field. To the right of the buttons are radio buttons for 'NRML' and 'MIS', and another set for 'CURRENT MONTH' and 'NEXT MONTH'. Below these are a date field showing '19/05/2017' and a 'My Clients' button. On the far right are three blue buttons: 'ORDER BOOK (F3)', 'TRADE BOOK (F8)', and 'NET POSITIONS (F11)'. Annotations with arrows point to each button: 'For CMP Buy' points to the BUY button, 'For StopLoss Buy' points to the STOP LOSS BUY button, 'For Pending order Place price in Box and Place it' points to the Price field of the SELL button, 'For CMP Sell' points to the SELL button, and 'For StopLoss Sell Click' points to the STOP LOSS SELL button.

For CMP Buy

For StopLoss Buy

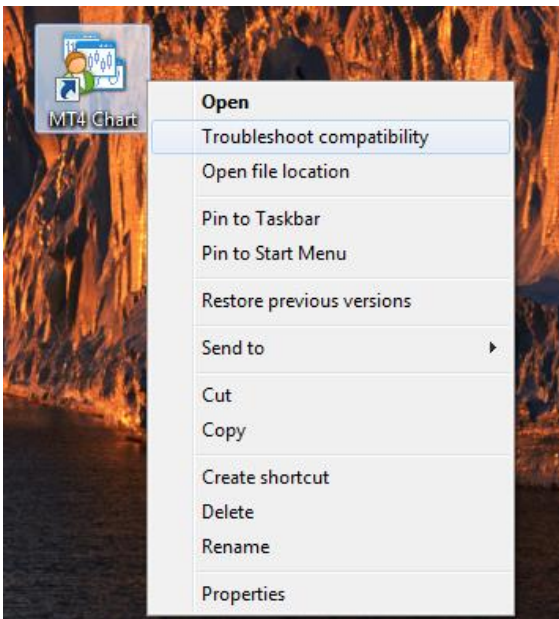
For Pending order Place price in Box and Place it

For CMP Sell

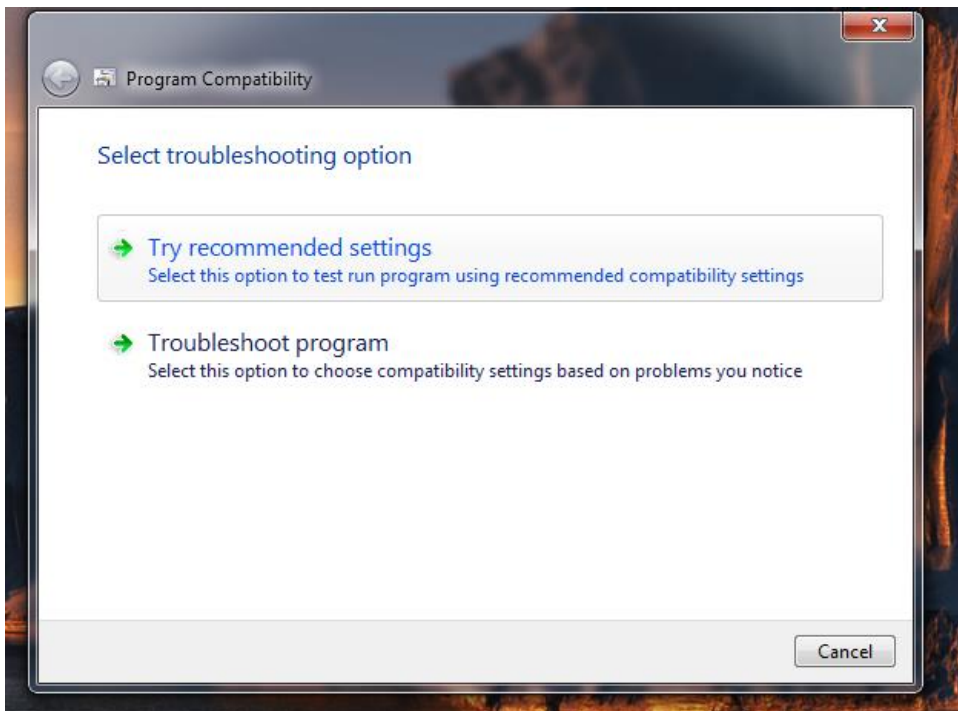
For StopLoss Sell Click

IMPORTANT IF ONE CLICK NOT WORKED:

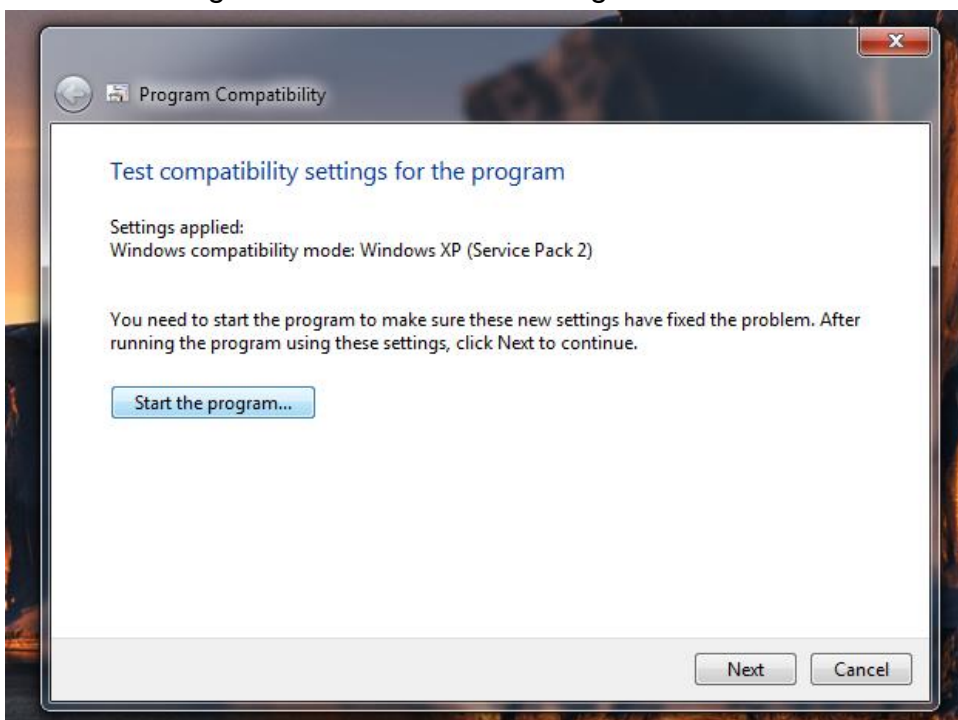
1. Right Click on the MT4Chart Icon and Click Troubleshoot Compatibility.



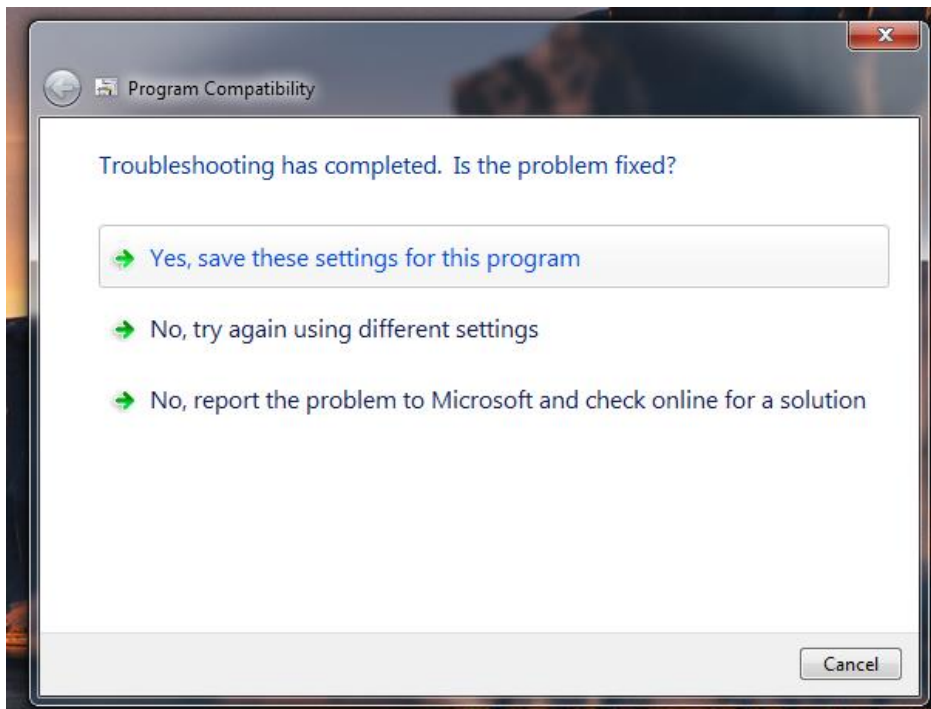
2. Click on Try Recommended Settings



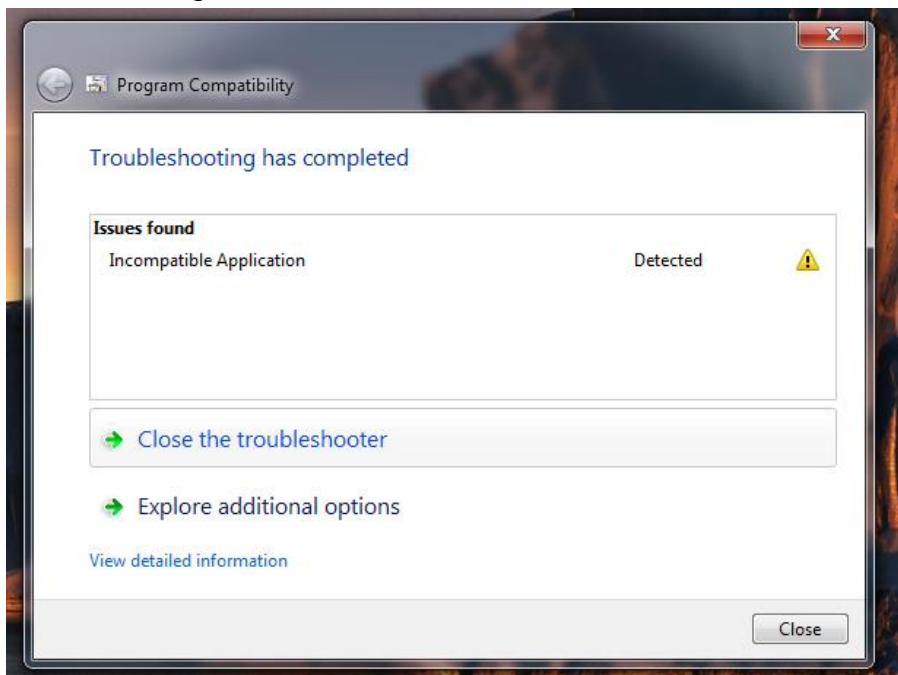
3. After Clicking it. Click the Start The Program Button And Click NEXT Button



4. After Clicking Next, Click the Yes, Save these setting for this Program.



5. After Finishing Close the Troubleshooter



6. Program Will Restart and file get open

8. GENERAL INSTRUCTIONS FOR NEST & MT4

a) Configuration of Trading Terminal NEST:

- Check Order Settings in Nest
- Select - Single Click to Execute Order in Nest order system

b) Check Order Settings in Nest:

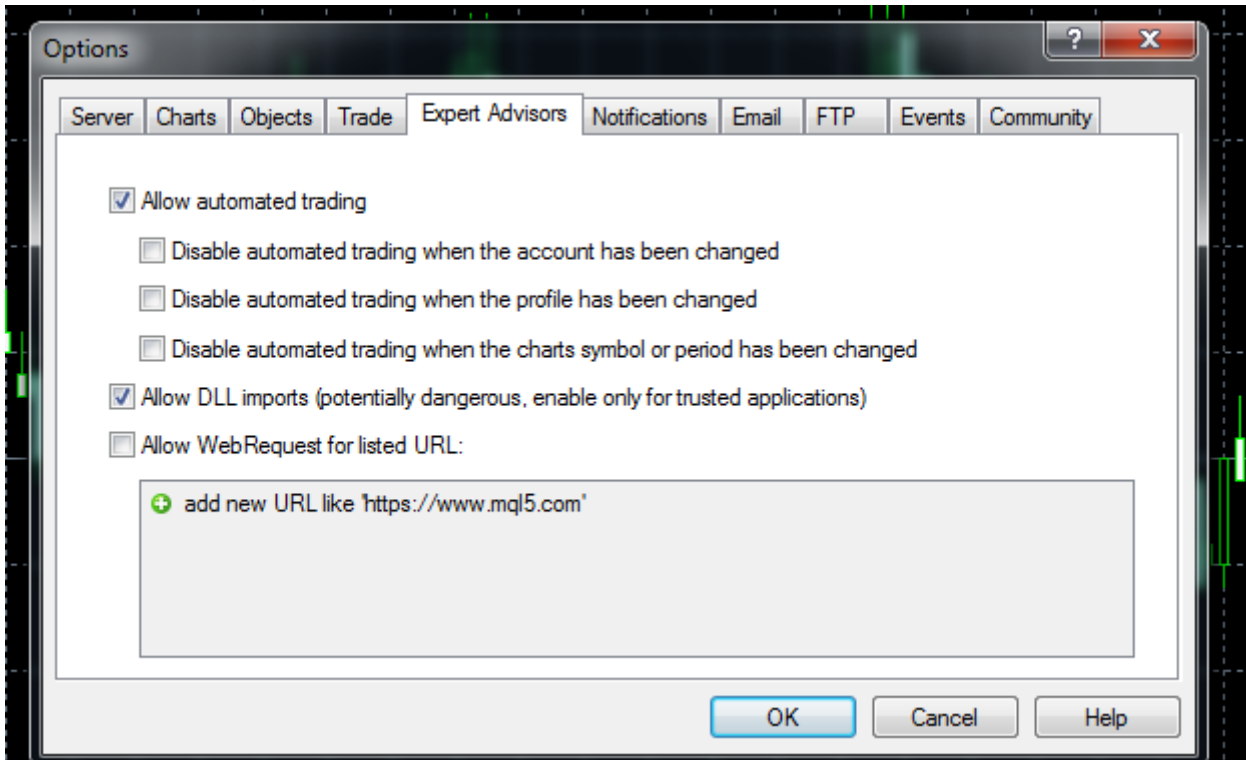
Location for NEST: Nest - Preferences- Order Settings

Keep these options - Disabled in terminal Order settings


- Fresh Order
- Order Modification
- Market Order
- Order Cancellation

c) Configuration of MT4 Trading Terminal

Go to Tools menu → In that Option Click Expert Advisor and Enable Allow Automated trading & Allow DLL Imports and Click OK Button



The Market Watch Window:

The "Market Watch" window can be activated by pressing the **Ctrl+M** key combination, or by using the **View->Market Watch** menu sequence or by clicking the  button from the "Standard" toolbar:



Right click the mouse button on the "Market Watch" window to produce the context menu:



New Order – enables the window to open/close a position or to place a new pending order;

Chart Window – enables the chart of a currency pair or CFD;

Tick Chart – shows the tick chart for the selected instrument;

robotz.in@gmail.com

Hide – deletes the specified symbol from the list in the "Market Watch" window;

Hide All – deletes all symbols from the list in the "Market Watch" window which are not used (if you have open positions or charts, its symbols will not be deleted);

Show All – displays all available symbols in the "Market Watch" window;

Symbols – enables the window where you can hide/show the selected instruments;

Sets – saves/adjusts/deletes the custom settings for the "Market Watch" window;

High/Low – shows/hides columns with the highest and lowest prices for each instrument;

Time – displays a column with the arrival time of the latest quote for each instrument;


Grid - hides/unhides gridlines in the "Market Watch" window;

Popup Prices – opens the popup window which contains real time quotes for your selected instruments.

In MetaTrader 4, you can see as many real time charts as you wish, all on one screen, for any currency pair and for any time period. The following types of charts are available in MetaTrader 4:

Line Chart. Chart x-axis is for the different time periods (minutes, hours, days, months etc.), and y-axis is for the price. The point on the chart shows the close price for the period, i.e. the bid of the last quote for this period. All the sequential points are joined by lines:

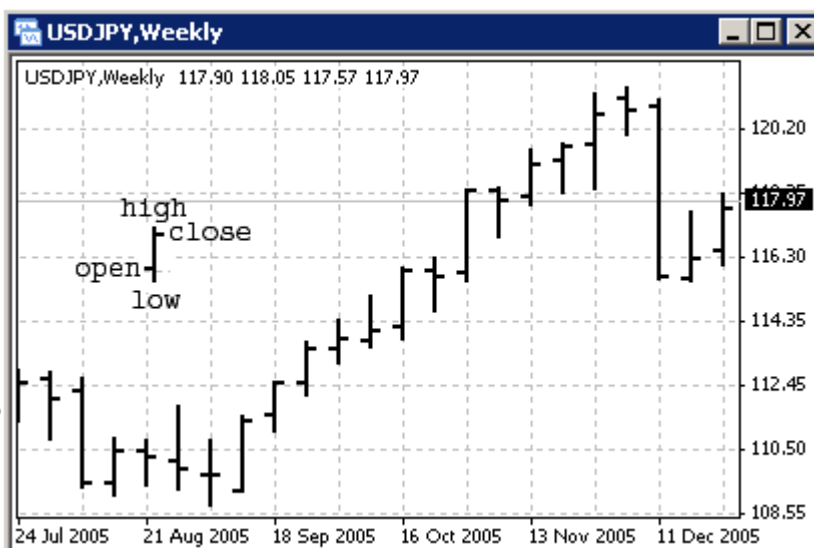



It is recommended that this chart type is used only for the short time periods (up to 5 minutes). In order to change the chart to a line chart, press the  button on the «Charts» toolbar:



or press the **Alt+3** key combination or use the **Charts -> Line Chart** menu sequence.

Bar Chart. The chart is created with the use of bars. Each bar has a high (top), a low (bottom), an opening price (left horizontal little line) and a closing price (right horizontal little line) for the specified period of time (for example, an hour):



It is recommended that you use this chart type for periods of 5 minutes or more. In order to change the chart to a bar chart press the  button on the "Charts" toolbar




or press the **Alt+1** key combination, or use the **Charts -> Bar Chart** menu sequence.

Candlesticks. These charts are created in the same way as bar charts:



Candlesticks charts were very popular in the 80-90s because of their clear graphics. This method of technical analysis is based on the correlation between both closing and opening prices within the same trading day, and the closing price of the previous session and the opening price of the next session.

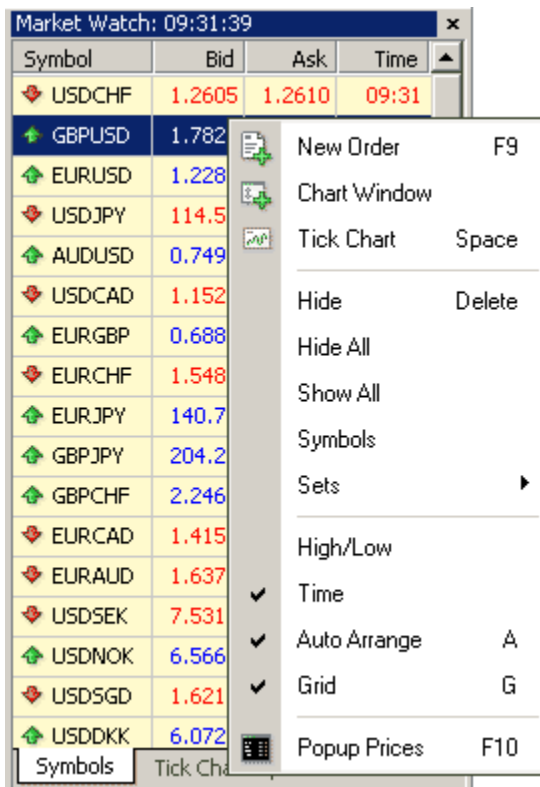
Candlesticks have different configurations compared to bar charts. The rectangular part of the candlestick line is called the **real body**. The thin vertical lines above and below the body are called **shadows**. They show lows and highs within a specified period of time. Depending on the closing and opening prices the real body can be white (empty) or black. When the body is white, the closing price is higher than the opening level. When the body is black, the closing price is lower than the opening level.

In order to create a candle chart press the  button on the "Charts" toolbar:



the **Alt+2** keys simultaneously, or use the **Charts ->** or press **Candlesticks** menu sequence

In order to create a new chart for any instrument right click on the "Market Watch" window, then select the **Chart window** item from the context menu:

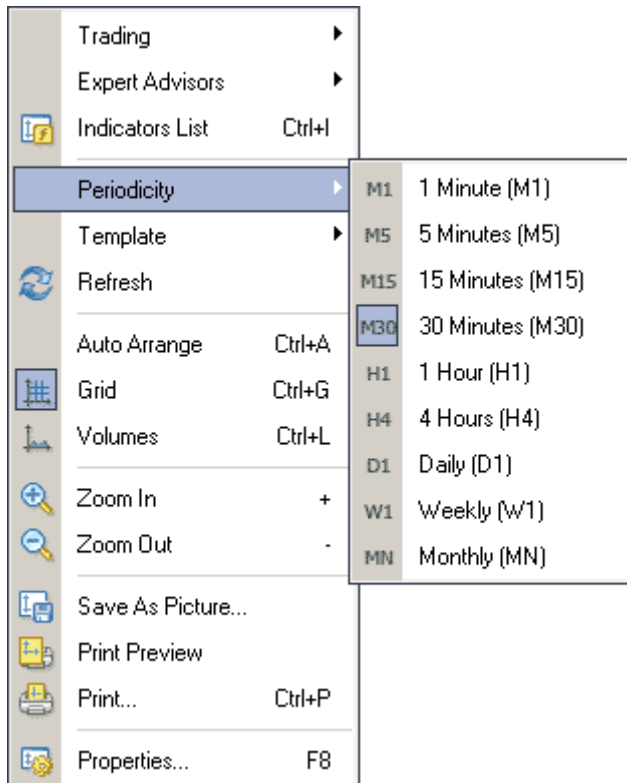



By left clicking the mouse you can drag and drop any selected currency pair into any open chart window.

Chart period – the period displayed in one bar or candle. For example, if you create a 15 minute bar chart, then each bar will have the price data for the relevant 15 minutes. In MetaTrader 4 the following time periods can be used: 1, 5, 15, 30 minutes (M1, M5, M15, M30 respectively), 1 hour (H1), 4 hours (H4), 1 day (D1), 1 week (W1) and 1 month (MN). In order to change a time period, use the "Periodicity" toolbar:



Right click anywhere on the chart to produce the context menu to get access to the chart settings:





Choose **Periodicity** and select a time period from the drop down menu or press the  button on the "Charts" toolbar;

Select **Refresh** item if an error occurs or if there are so called "gaps" on the chart. All missing data will be uploaded from the server and will appear on the chart;

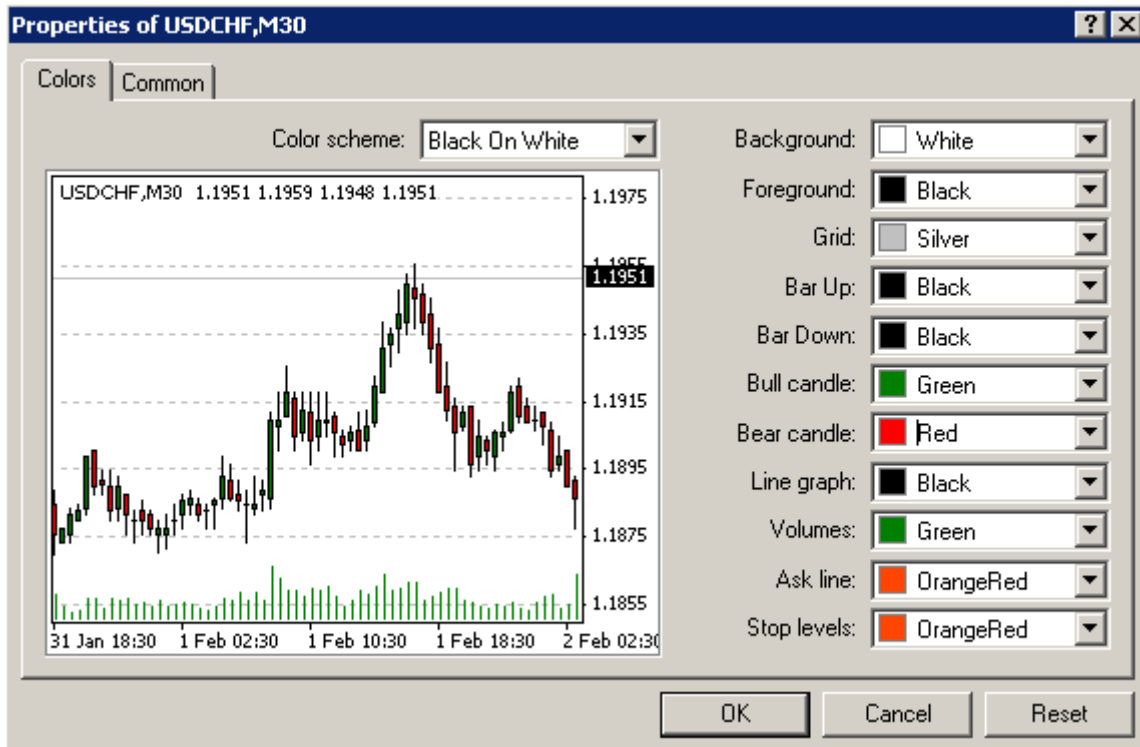
Select **Grid** if you wish to hide/unhide gridlines on the chart;

Select **Volumes** in order to show/hide tick volume (the number of quotes of any period time);

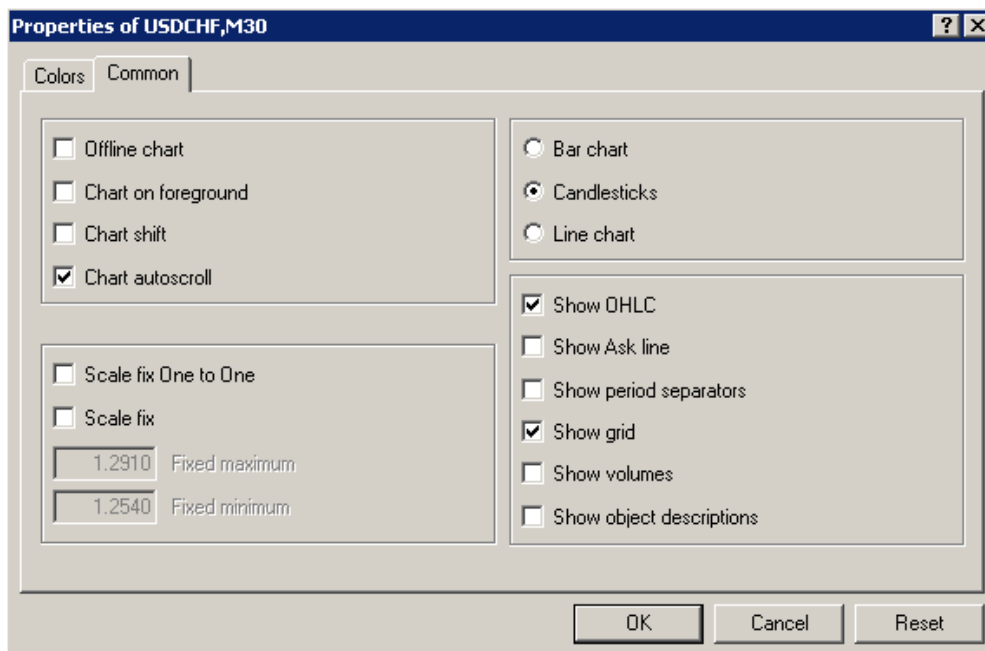
Zoom in / Zoom out will help you to modify chart measures. You can also use the  /  buttons on the "Charts" toolbar or press the "+" and "-" buttons;

Save as picture... will save the chart as the *.gif, or *.bmp. file;

Properties... (or the **F8** button) enables the window where you can change chart settings, by selecting the "Color" tab you can change the color of any element on the chart:



Other settings can be changed in the Common tab:



Please note the following options:

Offline chart - the chart is not being updated by new quotes. Once you open the chart offline (**File -> Open offline**) this option becomes automatic;



Chart shift – allows you to shift the chart from the right edge of the window, to see the most recent candle forming. You can also press the  button on the "Charts" toolbar or use the **Charts -> Chart shift** menu sequence;

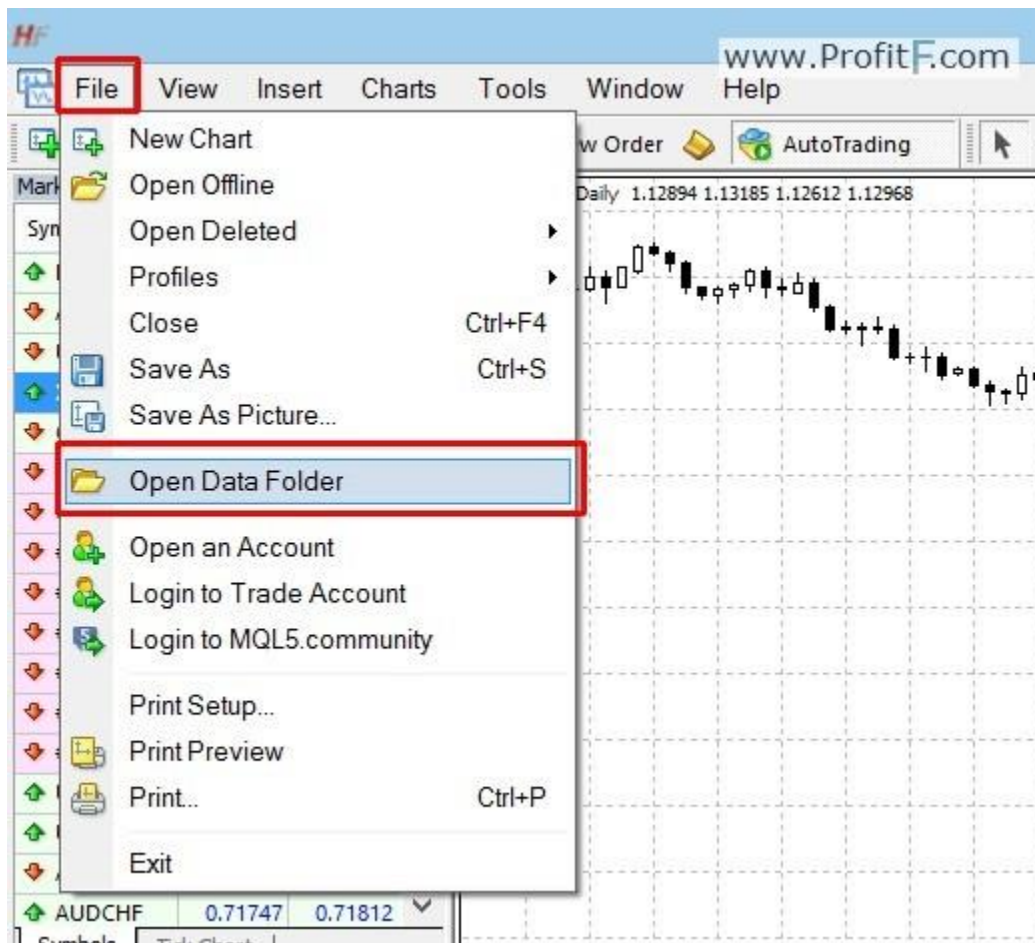
Chart autoscroll - autoscrolls to the left once a new quote is received. You can also press the  button on the "Charts" toolbar or use the **Charts -> Autoscroll** menu sequence. If you are viewing the chart back a few days, and the autoscroll button is depressed, it will automatically take you to the most recent candle forming on the next tic of the price.

[How to install Indicators,Experts,Scripts,Templates in MT4](#)

Step By Step instructions

How to install software (Indicators, Experts, Scripts, Templates) into new MT4

1. Open your MetaTrader 4
2. Click **File — Open Data Folder** (Picture #1)



Pic.1 File — Open Data Folder

Here you will find a folder called **MQL4**:



Pic.2 MQL4 Folder

3. Open **MQL4** folder. Now, you'll see these folders:



Pic.3 Folders into MQL

\Experts – Expert Advisors (trading robots),

\Indicators – custom indicators,

\Scripts – scripts (MQL4 applications for a single run on the chart),

\include – source code MQH and MQ4 files implemented into other programs,

\libraries – libraries in the form of MQ4 source codes and EX4 executable files compiled from them. They are used for the dynamic call of the functions contained there by other MQL4 programs,

\Images – image files for using in resources,

\files – special “file sandbox”. MQL4 applications are allowed to execute file operations only within this directory.

4. Insert your files :

– Insert your **EA** files (ex4 or .mq4) into **MQL4/Experts** folder.

– Insert your **Indicators** (ex4 or .mq4) files into **MQL4/Indicators** folder.

– Insert your **Scripts** files (ex4 or .mq4) into **MQL4/Scripts** folder.

www.robotz.in

robotz.in@gmail.com

- Insert **Settings** files of EA (.set) into **MQL4/Presets** folder.
- Insert your **Libraries** files (dll) files into **MQL4/Libraries** folder.
- NOTE: **Template** files must be NOT in “MQL4 folder” . Copy your .tpl files into templates folder (Picture #4). You can find **templates folder** when open your Data Folder)



Pic.4 Templates Folder

5. Restart your MetaTrader 4 after Attaching.

Thank you